



## JEWELLERY AND WATCHES

Tuesday 6th September 2016 at 12:00 noon

Catalogue J2

## JEWELLERY, WATCHES and VERTU

Frances Noble	Head of Department	020 7016 1781	frances@dnw.co.uk
Laura Smith		020 7016 1782	laura@dnw.co.uk

## COINS, BANKNOTES, TOKENS and COMMEMORATIVE MEDALS

Christopher Webb	Director	020 7016 1801	chris@dnw.co.uk
Peter Preston-Morley		020 7016 1802	ppm@dnw.co.uk
Jim Brown		020 7016 1803	jim@dnw.co.uk

### CONSULTANTS

Nigel Mills	Artefacts and Antiquities		nigelmills@dnw.co.uk
Peter Mitchell	British Hammered Coins		petermitchell@dnw.co.uk
Michael O'Grady	Paper Money		michaelogrady@dnw.co.uk
Douglas Saville	Numismatic Literature		douglassaville@dnw.co.uk

## MEDALS and MILITARIA

Nimrod Dix	Director	020 7016 1820	nimrod@dnw.co.uk
David Erskine-Hill		020 7016 1817	david@dnw.co.uk
Pierce Noonan	Director	020 7016 1818	pierce@dnw.co.uk
Oliver Pepys		020 7016 1811	oliver@dnw.co.uk

### CONSULTANTS

Dixon Pickup	Militaria		dixon@dnw.co.uk
--------------	-----------	--	-----------------

### CLIENT LIAISON

Christopher Hill		020 7016 1771	christopher@dnw.co.uk
------------------	--	---------------	-----------------------

### PUBLIC RELATIONS

Will Bennett	Consultant	07770 694254	will.bennett@dsl.pipex.com
--------------	------------	--------------	----------------------------

### UK REPRESENTATIVES

Garry Charman	West Midlands		garrycharman@dnw.co.uk
Michael Trenerry	West Country		michaeltrenerry@dnw.co.uk
Colin Fraser	Scotland		colinfraser@dnw.co.uk

### OVERSEAS REPRESENTATIVES

John Burridge MG	Australia WA	(61) 89 384 1218	john@jbma.com.au
Tanya Ursual	Canada Ontario	(1) 613 258 5999	egu@magma.ca
Eiichi Ishii	Japan Tokyo	(81) 3 5777 0351	info@coins.co.jp
Alex Kilman	Russia		akilman@dnw.co.uk
Natalie Jaffe	South Africa Cape Town	(27) 21 425 2639	nataliejaffe@citycoins.co.za
Dr Andy Singer	USA Maryland	(1) 301 805 7085	andysinger1485@verizon.net

**Accounts and Administration:** **Philippa Healy** Office Manager 020 7016 1775 philippa@dnw.co.uk

**Victoria Noonan** 020 7016 1700 victoria@dnw.co.uk

**Viewing and Subscriptions:** **Emma Oxley** 020 7016 1700 emma@dnw.co.uk

**IT and Internet Bidding:** **Robin Greville** Director 020 7016 1750 robin@dnw.co.uk

**Ian Anderson** 020 7016 1751 ian@dnw.co.uk

**Photography:** **Jan Starnes** 020 7016 1773 jan@dnw.co.uk

**Ian Kington** 020 7016 1774 iank@dnw.co.uk

**Danielle Quinn** 020 7016 1772 danielle@dnw.co.uk

**Mailroom and Logistics:** **Dave Farrell** 020 7016 1753 dave@dnw.co.uk

**Christopher Finch Hatton** 020 7016 1754 finch@dnw.co.uk

**James King** 020 7016 1833 james@dnw.co.uk



**DIX NOONAN WEBB**

16 Bolton Street

Mayfair

London W1J 8BQ

Tel: 020 7016 1700

Fax: 020 7016 1799

VAT No. GB 562 8504 32

Registered at the above address No. 2562425

Bankers: Lloyds TSB, 39 Piccadilly, London W1J 0AA. Sort Code: 30-96-64. Account No. 0622865

Swift Code: LOYDGB2L IBAN: GB70LOYD30966400622865 BIC: LOYDGB21085

**Account Enquiries:** accounts@dnw.co.uk

**General Auction Enquiries:** auctions@dnw.co.uk

**To place Commission Bids:** www.dnw.co.uk

**To book Viewing Appointments:** viewing@dnw.co.uk

**To renew Catalogue Subscriptions:** www.dnw.co.uk

AN AUCTION OF

## JEWELLERY AND WATCHES

---

VIEWING  
AUCTION

### Live Online Auction

With room bidding available at

16 Bolton Street

London

W1J 8BQ

Free live bidding:

[www.dnw.co.uk](http://www.dnw.co.uk)

Tuesday 6th September 2016

at 12:00 noon

---

VIEWING

Monday 22nd to Friday 26th August

Tuesday 30th and Wednesday 31st August

16 Bolton Street, Mayfair, London W1J 8BQ

*Strictly by appointment only*

Thursday 1st September Evening Viewing

16 Bolton Street, Mayfair, London W1J 8BQ

*Public viewing, 5 pm to 7 pm*

Friday 2nd and Monday 5th March

16 Bolton Street, Mayfair, London W1J 8BQ

*Public viewing, 10 am to 5 pm*

Tuesday 6th September

16 Bolton Street, Mayfair, London W1J 8BQ

*Public viewing, 9 am to 11 am*

---

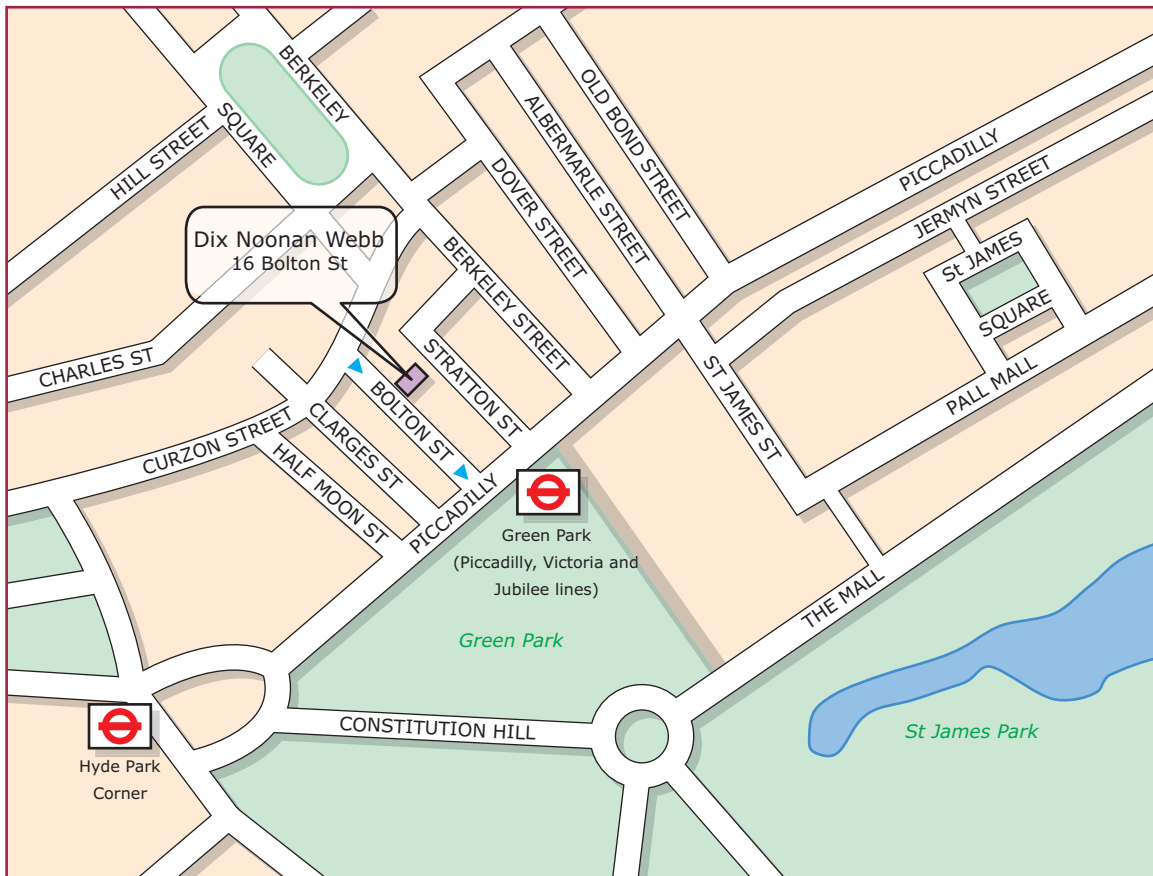
In sending commissions or making enquiries please contact:

Frances Noble or Laura Smith

## CONTENTS

*Please note: Lots will be sold at a rate of approximately 120 per hour*

Watches .....	1-37
Jewellery .....	38-293



## Advance Bidding Facility

---

*We strongly advise clients to take advantage of our easy to use advance bidding facility which provides bidders with total control over their bids right up to the point that the lot is offered for sale.*

*Bids made online cannot be seen by others and do not go live until the actual moment that the lot in question is being offered for sale. All bids can be easily altered or cancelled by the bidder prior to this point. An automated email will be sent confirming all bids and alterations.*

*Anyone with a valid email address and payment card can easily register to bid online.*

*There is no additional charge for online bidding.*

*It is recommended that all bidders execute their own bids either prior to the sale by using our online advance bidding facility or live as the auction is taking place.*

*Whilst we are still happy to execute all bids submitted in writing or by phone, fax, etc., it should be noted that all bids left with us will be entered at our offices using the same bidding facility to which all our clients have access. There is, therefore, no better way of ensuring the accuracy of your advance bids than to place them yourself online.*

---

*For any support queries please contact:*

*Ian Anderson  
ian@dnw.co.uk  
020 7016 1751*

## **IMPORTANT INFORMATION FOR BUYERS**

All lots in DNW auctions are automatically reserved at the bid step which reflects 80% of the lower estimate figure, unless otherwise instructed by the vendor.

**Lots marked ‘\*\*’ are subject to VAT at 20% unless exported outside the EU**  
**Lots marked ‘x’ are subject to importation duty of 5%**  
**on the hammer price unless re-exported outside the EU.**

### **SALEROOM NOTICES**

Should the description of a lot need to be amended after the publication of this catalogue, the amended description will appear automatically on the DNW website, [www.dnw.co.uk](http://www.dnw.co.uk). All such amendments are incorporated in the list of saleroom notices pertaining to this auction which are also posted on the DNW website. **Prospective bidders are strongly urged to consult this facility before sending bids or bidding online.**

### **TREATED GEMSTONES**

It is common practice for many gemstones to be subject to various treatments to improve their appearance. Sapphires and rubies are routinely heat treated to improve their colour and clarity, emeralds may be treated with oils or resin, other gemstones may be subject to treatments such as staining, irradiation or coating. Jade may be bleached, polymer/resin filled or dyed, or a combination of treatments used.

Bidders should be aware that, unless stated to the contrary in the catalogue description, it should be assumed that the gemstones may be treated. Where Reports are provided from Gem Laboratories, the opinions as to gradings and treatments of stones may differ slightly between laboratories and DNW cannot be held responsible for any discrepancies.

### **UNMOUNTED GEMSTONES**

Please note that VAT at 20% is chargeable on the Hammer Price of unmounted gemstones, and relevant lots are marked with an asterisk \*.

### **EXPORT OF RUBY AND JADE**

Please note that as a result of recent legislation, ruby and jadeite gemstones of Burmese (Myanmar) origin may not be imported into the USA. Rubies and jadeite of non-Burmese origin require certification before import into the USA.

### **EXPORT OF IVORY**

The US Government has banned the import of ivory into the USA.

### **EXPORT OF OTHER ORGANIC MATERIALS**

Other organic materials, such as coral and tortoiseshell may be covered by CITES legislation, and this may or may not impact export to other countries, please see [www.cites.org](http://www.cites.org) for more information.

### **EXPORT OF WATCHES**

Please note that watches by CORUM, FRANCK MULLER, PIAGET, TUDOR AND ROLEX are subject to import restrictions into the USA.

Please also note that in some circumstances we are unable to ship the watch with its strap due to certain import restrictions regarding material derived from endangered or otherwise protected species.

### **BUYERS' PREMIUM**

Please note that the buyers' premium in this sale is 20%.

### **CATALOGUE ILLUSTRATIONS AND THE INTERNET**

Prospective bidders are reminded that the DNW website features enhanced high-resolution enlarged colour illustrations of every lot in this auction.

### **PRICES REALISED**

The hammer prices of lots sold at DNW auctions are posted at [www.dnw.co.uk](http://www.dnw.co.uk) in real time and telephone enquiries are welcome from 09:00 on the day after the auction.

## INDEX of MAKERS

Abdul Caffor & Co.....	Lots 210 and 211
Anderson, David.....	Lot 159
Atlas .....	Lot 23
Blanc Pain .....	Lot 9
Bueche Girod.....	Lot 33
Breguet.....	Lot 37
Cartier.....	Lots 11 and 108
Certina .....	Lots 12, 13 and 14
Cropp & Farr .....	Lots 63, 131 and 194
Dahlquist, Ibe.....	Lot 165
Dubro.....	Lot 10
Fred.....	Lot 29
Graff.....	Lot 26
Hancocks .....	Lot 135
Hansen, Hans.....	Lot 166
Hornby, Richard .....	Lot 7
Hull, Jacob .....	Lot 158
Jensen, Georg.....	Lots 158, 159, 160, 161, 162, 163, 164, 165, 166 and 167
Kindt-Larsen, Edvard.....	Lot 167
Kutchinsky.....	Lots 65 and 288
Longines.....	Lot 32
Mapping & Webb .....	Lot 145
Mido .....	Lot 34
Mikimoto.....	Lot 50
Moussaieff .....	Lots 66 and 288
Mautner, Hans George.....	Lot 223
Omega.....	Lots 15, 16, 27, 31
Patek Philippe.....	Lot 30
Rolex.....	Lots 24 and 28
Russell, Thomas & Son.....	Lot 5
Sampson Mordan & Co .....	Lot 6
Sampson, V. ....	Lot 3
Thomas, David .....	Lot 226
Tiffany & Co .....	Lots 67 and 68
Universal .....	Lot 35
Vacheron Constantine.....	Lot 25
Waltham.....	Lot 22
Zenith.....	Lot 20



# Watches





## Watches

- 1 **A STEEL CASED GOLIATH POCKET WATCH**, the white enamel dial with thick black Roman numerals, subsidiary seconds dial and outer minute divisions, gilt spade hands, high bevelled glass, the keyless wind movement numbered 73163, in polished steel case, contained in a silver mounted easel back travelling case, hallmarked for Birmingham 1899, maker's mark 'H W Ltd', *diameter 65.5mm, travelling case 11cm high.*

£240-280



2



- A SILVER GILT CASED QUARTER REPEATING SILM POCKET WATCH**, the engine-turned gilt dial with black Roman numerals, jewelled key wound movement with cylinder escapement and two chimes, engine-turned cuvette inscribed 'Cylindre, huit rubis' and bearing French silver guarantee mark for 800 standard, Paris 1838-1962, engine-turned case with blank escutcheon, repeater operated by pushing crown, *watch diameter 50mm.*

£460-500

3

- A SILVER PAIR CASED VERGE POCKET WATCH, BY V. SAMPSON, LONDON**, the white enamel dial with black Arabic numerals, the full plate verge fusee movement with uncompensated steel balance wheel, signed and numbered '2940', silver pair cases hallmarked for London, 1820 and bearing maker's mark 'WW', *total watch diameter 56mm.* £240-280



4



**TWO WHITE METAL G.S.T.P. MILITARY ISSUE POCKET WATCHES**, the first with white dial and Arabic numerals, the hands and quarter numerals luminous, with subsidiary seconds dial, jewelled movement, case with screwdown back, bearing broad arrow, G.S.T.P and numbered 'M74028', the second of similar design, dial signed 'Leonidas' and case bearing broad arrow, G.S.T.P and numbered 'U11740'. **£150-200**

5

**A POCKET WATCH BY THOMAS RUSSELL AND SON, TOGETHER WITH A 9CT GOLD ALBERT CHAIN AND AN 18CT GOLD FOB WATCH**, the openfaced pocket watch with signed white enamel dial and subsidiary seconds dial, signed jewelled movement, the plain case hallmarked for Chester, 1912, the Albert chain of uniform curb links, to swivel terminals and central T-bar, the openfaced fob watch with gilt dial, and scroll engraved case with import marks for 18ct gold, *pocket watch diameter 5.2cm, weight 105gm, Albert chain length 43cm, weight 37gm.* **£700-900**



6



**A GOLD HALF HUNTER POCKET WATCH WITH CHAIN AND PENCIL** the white enamel dial with black Roman numerals, subsidiary seconds dial and blued steel hands, lacking glass, 3/4 plate movement, the gold cuvette and front cover bearing import marks for 12ct gold, the plain case with blue enamel chapter ring, suspended from a 9ct gold baton and belcher-link chain, to a 9ct gold pencil fob, by Sampson Mordan & Co, in a case signed 'J. W. Benson Ltd', *watch diameter 5cm, chain length 34.5cm.* **£500-700**

7

**AN 18CT GOLD OPEN FACE POCKET WATCH AND 18CT GOLD ALBERT CHAIN**, the open faced pocket watch with white enamel dial, black Roman numerals and subsidiary seconds dial, the 3/4 plate key-wound movement signed 'Rich. Hornby, 41 Pool Lane, Liverpool' and numbered '26987', the gold cuvette bearing presentation inscription, engine-turned case hallmarked for Chester, 1848, the uniform curb-link Albert chain with swivel and ring bolt clasp terminals, stamped '18', in semi fitted case signed 'Penlington & Batty, Liverpool & Manchester', *watch diameter 4.9cm, chain length 37.5cm.* **£800-1000**



8



**A DIAMOND SET COCKTAIL WATCH**, the rectangular dial with guilloché detail and black Arabic numerals, jewelled Swiss movement, case stamped 'platinum' and numbered '5125', the tonneau-shaped bezel and open-link shoulder set throughout with graduated single-cut diamonds, to a mesh-link strap, clasp stamped 'plat', *dial length 18mm, total length of watch head and shoulders 58.5mm.* £460-500

9

**A LADY'S 18CT GOLD AUTOMATIC CALENDAR WRISTWATCH**, BY **BLANC PAIN**, the signed circular white dial with applied gilt Arabic numerals, centre sweep seconds hand and date aperture at 3, automatic movement, yellow gold case signed and numbered '1769', with European convention mark, polished stepped bezel and lugs, to a black leather strap, with yellow gold buckle, stamped '750', *dial diameter 20mm.*

£600-800



10



**A LADY'S CONCEALED DRESS WATCH/BRACELET**, BY **DUBRO**, the signed silvered rectangular dial with Roman numerals and spot hour markers, jewelled movement signed 'KEWA', the watch hidden beneath hinged buckle motif within track-link bracelet, mounted in yellow precious metal, case and clasp stamped '14k', *watch/bracelet length 15.5cm.* £800-1000



**A CARTIER 18CT GOLD DIAMOND SET PANTHERE QUARTZ LADY'S WRISTWATCH**, the ivory dial with printed black Roman numerals and inner five minute track, secret signature at 10, blued steel hands, brushed and polished case with stepped diamond set bezel secured with 8 studs, the case back secured with 8 gold screws, with shouldered diamond set winding crown, jewelled Cal. 83 quartz movement, case numbered to the reverse 866911 32036, fitted 18ct gold Cartier brick-link bracelet with double folding clasp; the case, dial and movement signed, (with additional links for bracelet), *watch head 24mm.* £3500-4000



12



**A CERTINA BIO STAR ELECTRONIC STAINLESS STEEL WRISTWATCH, CIRCA 1971-4**, with ESA 9156 transistorised balance wheel movement, the signed silvered dial with applied baton numerals, featuring the biorhythm display, the three coloured dials for Intellect, Emotion and Fitness levels, with sweep seconds hand, in brushed steel case, with reference numbers 7500 1001 and 9073162 to the reverse, signed crown, and signed bracelet, with original red Certina box, *watch head diameter 44mm.* £200-300

The idea of biorhythms was introduced at the beginning of the 20th century by the Austrian psychologist Hermann Swoboda from Vienna and the German doctor Wilhelm Fliess from Berlin, claiming that everyone's life is affected by rhythmic biological cycles and these can be calculated. The three cyclic rhythms are composed of: the physical, having a duration of 23 days, the emotional (28 days) and the mental (33 days).

Biorhythms became popular in the 1970s and this watch allowed you to assess your 'good and bad days' through the three colour discs for Intellect (red disc), Emotion (blue) and Fitness levels (green) for the current day. The fourth disc gave the day of the week. To enable the wearer to do this, when purchased, the watch was set up with the purchaser's birth date.

The Bio Star watch uses the ESA 9156 transistorised balance wheel movement, and was the only watch produced to use this movement. The 9156 is essentially the same as the common 9154, but had the added complications for the biorhythms discs.

13



**A CERTINA DS-2 CERTRONIC STAINLESS STEEL DAY DATE WRISTWATCH, EARLY 1970s**, with ESA 9164 'tuning fork' movement, the signed circular blue dial with applied luminous baton numerals and hands, red sweep seconds hand, day date aperture at 3, in brushed polished stainless steel case with signed crown and turtle back, on signed bracelet, with original red Certina box, *watch head diameter 44mm.* £200-300

Certina was one of the many watch makers in the early 1970s to produce an electronic model that employed ESA's 9162 or 9164 tuning fork movements.

- 14** A CERTINA DS-3 STAINLESS STEEL QUARTZ WRISTWATCH, CIRCA 1970s, the signed silvered dial with applied baton numerals, date aperture at 3, sweep seconds hand, in polished bezel, with signed crown, turtle back, numbered '750 1400 41', on later unassociated brown strap, *diameter 39mm.* £100-120



- 15** A GENTLEMAN'S STAINLESS STEEL OMEGA SEAMASTER AUTOMATIC CALENDAR WRISTWATCH, 1970s, the signed circular dial with applied baton hour markers, date aperture at 3 and sweep seconds hand, within cushion-shaped brushed steel case with signed screw down back, to track-link bracelet strap with deployant clasp, bracelet numbered 653, *dial diameter 42mm.* £100-200



- 16** AN OMEGA SEAMASTER STAINLESS STEEL LCD/ANALOGUE 'CHRONO-QUARTZ' BRACELET WATCH, 1970s, with quartz movement calibre 1611, the rectangular black dial with two LCD digital displays on the left, and analogue display on the right, with luminous baton hour markers and date aperture at 3, the brushed stainless steel case with rounded corners, push buttons for the chronograph functions to the left, and crown with time functions on the right, the reverse with logo of Montreal Olympic games, held by four screws, with integral stainless steel bracelet with folding deployant clasp, the case, dial and movement signed, with original red Omega box, purchaser guarantee dated March 1979 and June 1979, and original Omega booklet, *watch head width 47mm.* £500-700

The Omega Chrono-quartz watch was the world's first digital/analogue chronograph. Invented by Omega SA, and launched at the 1976 Montreal Olympic Games it was Omega's flagship chronograph at that time. The watch was the first to combine analogue display for the time functions and a digital display for the chronograph function, each working independently of one another but running on the same quartz resonator (32 kHz).



17



**A LONG 9CT GOLD GUARD CHAIN**, of faceted belcher links, to a swivel clasp, chain and clasp stamped '9ct', suspending a small lady's fob watch with silvered dial and scroll engraved case, stamped '14k', *chain length 148cm, chain weight 22gm.* £220-260

18

**A LADY'S ENAMELLED FOB WATCH**, the white enamel dial with black Arabic numerals and gilt scrolled hands, the jewelled cylinder escape movement numbered '8805', the case stamped '18k' with Swiss marks and numbered '61835', the case has engraved detail and blue enamel highlights to the bezel and band, the reverse decorated with painted enamel portrait of a lady in a blue gown carrying water from a well, *watch diameter 29mm.* £250-300



19



**A SMALL LADY'S FOB WATCH**, the white enamel dial with black Arabic numerals, outer minutes scale and subsidiary seconds dial, with scrolled hands, jewelled movement, case with engraved decoration stamped '14K', *diameter 36.5mm.* £460-500

20

**A SILVER CASED POCKET WATCH, BY ZENITH**, the signed white enamel dial with black Arabic numerals and outer 13-24 scale, with gold scrolled hands and subsidiary seconds dial, signed jewelled movement numbered '3159646', the cuvette signed and bearing inscription '29.9.1948, Minne pa 30 arsdagen', engine-turned case with gilding to the edges, bearing small initials verso, case stamped '800', *watch diameter 49mm.* £180-200

The inscription is Swedish and translates as '29.9.1948 in Memory of our 30th Anniversary'.



- 21 A GUNMETAL CASED CHRONOGRAPH POCKET WATCH, the white enamel dial with black Arabic numerals and outer 0-60 chronograph scale in red, with subsidiary seconds dial at 6 o'clock and a subsidiary chronograph minute dial, running counter clockwise, at 12 o'clock, jewelled movement, in plain gunmetal case, chronograph button to the crown, watch diameter 51.5mm. £200-240



- 22 A 'COIN-SILVER' CASED POCKET WATCH, BY WALTHAM, the white enamel with signed 'AWCo, Waltham', with black Roman numerals and subsidiary seconds dial, the centre over-painted in cream with Arabic numerals 13-24 in red, high bevelled glass, the full plate movement signed 'Wm Ellery, Waltham, Mass' and numbered '2211503', the heavy case stamped 'Fahys Coin No 1', watch diameter 58mm, gross weight 171gm. £180-200

Waltham produced many 1857 model watches which were cased in coin silver (from melted coinage), which differs from sterling silver, being only 90% pure.

- 23 A SILVER CASED 'ATLAS' GOLIATH POCKET WATCH ON GOLIATH CHAIN, the white enamel dial with black Roman numerals and subsidiary seconds dial, blue steel hands, high bevelled glass, the lateral lever escape top wind movement signed 'The Atlas Watch, Manuf'd in Switzerland', the heavy plain case bearing Swiss 875/1000 purity 1893-1934 assay mark, suspended on a heavy silver fetter and belcher-link Albert chain, with swivel terminal, links hallmarked, watch diameter 69mm, length of chain 21cm, gross weight of watch and chain 318gm. £700-900





24



A 9CT GOLD LADY'S WRISTWATCH, BY ROLEX, the small signed circular dial with applied gilt Arabic numerals, signed jewelled movement, case signed, bearing import marks for 9ct gold and numbered '3584 3931' with stepped shoulders and wire lugs, to a 9ct gold fancy-link bracelet strap, dial diameter 11mm. £200-300

25

A MID-SIZED DRESS WATCH, BY VACHERON & CONSTANTIN, the signed silvered dial with alternate black Arabic numerals and spot hour markers, black hands and subsidiary seconds dial, signed 17 jewel manual wind movement, gold plated case with signed steel back and rounded tapered lugs, to black leather strap, dial diameter 27mm. £240-300



26



A LADY'S 18CT GOLD WRISTWATCH, BY GRAFF, the plain black enamel oval dial, signed in gold and with tapered gilt hands, the jewelled movement signed 'Montre Royale, a Geneve' and numbered '4431', the case with barleytwist bezel, bearing Swiss assay marks and UK import marks for 1974, numbered '60235' to the interior and '4042' to the reverse, on a black leather strap, the gold buckle of matching barleytwist form, and bearing matching marks, dial 24mm x 19mm.

£500-700

27



**AN 18CT GOLD OMEGA LADYMATIC WRISTWATCH**, the signed circular silvered dial with applied baton hour markers, date aperture at 3 and sweep seconds hand, signed 24 jewel automatic movement, the plain case signed, bearing Swiss assay marks, and numbered '597 576 7140', to an integral woven-link bracelet strap with signed clasp, stamped '750', *dial diameter 17.5mm.* **£800-900**

28

**A 9CT GOLD LADY'S WRISTWATCH, BY ROLEX**, the small circular silvered dial with black Arabic numerals, within wide polished bezel, the 15 jewelled movement signed, the case signed 'ROLEX' and stamped 'W&D' for Wilsdorf & Davis, bearing import marks for London, 1914, and numbered indistinctly, to an expanding link bracelet strap stamped '15ct', in a case signed 'George W Webb Ltd, Jewellers, 12 Smithy Row, Nottingham', *dial diameter 15mm, watch head diameter 24mm.*

**£150-200**



29



**A LADY'S CALENDAR WRISTWATCH, BY FRED**, the circular white enamel dial signed 'FRED, Paris' and 'Force 10', with ropetwist detail border, applied gilt Roman numerals, centre sweep seconds hand and date aperture at 6, quartz movement, the yellow metal case with steel cable detail to bezel and steel back, numbered 'F 10 13677' and '9562.022.40', to a red leather strap, *dial diameter 20mm.* **£100-150**

30

**AN 18CT GOLD GENTLEMAN'S OMEGA AUTOMATIC WRISTWATCH**, the signed square dial with champagne coloured dial, applied black and faceted gilt numerals, with black hands, and sweep seconds hand, within polished gilt bezel, signed 24 jewelled movement, snap on back cover, to integral tapered textured strap, clasp stamped '18k', *watch head 27mm.* £1200-1400



31



**A LADY'S STAINLESS STEEL WRISTWATCH, BY LONGINES**, the signed white circular dial with slim black roman numerals, quartz movement, sealed case signed to the reverse 'La Grande Classique de Longines' and numbered '14 209 4' and '31154303', to a stainless steel track-link bracelet strap, with signed deployant clasp, *dial diameter 21mm.* £200-300

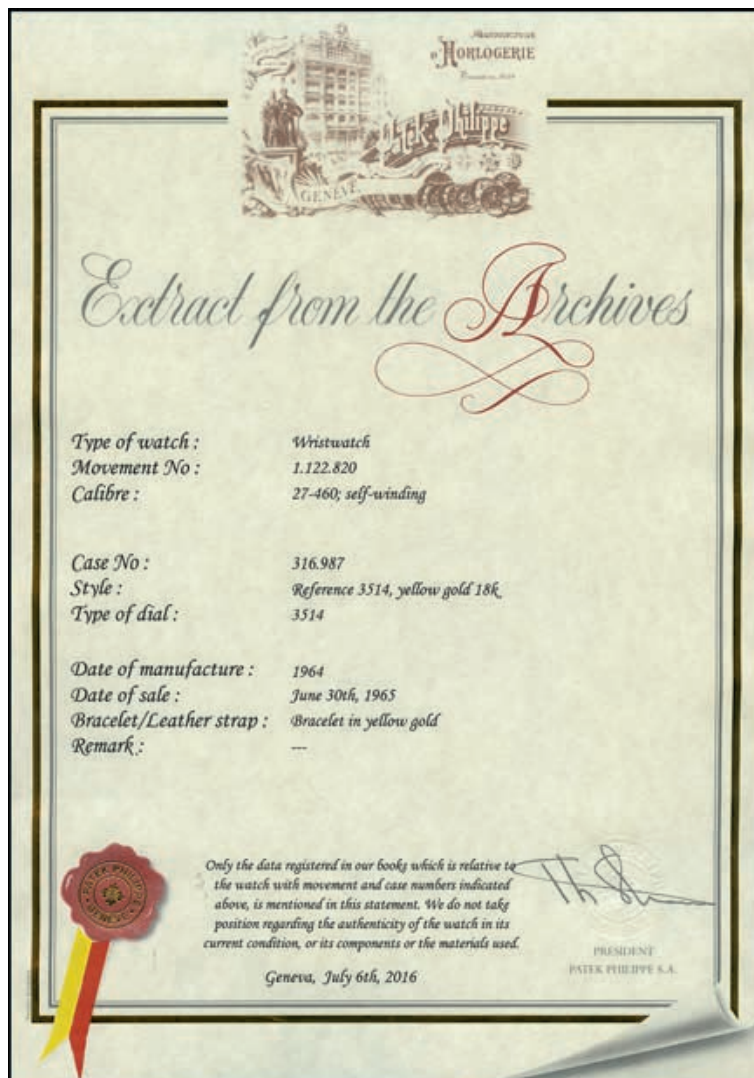
32

**A 1970s BUCHE GIROD 9CT GOLD WRISTWATCH**, the cushion-shaped plain black dial signed, with dagger hands, quartz movement, in 9ct gold round case, hallmarked, to a later black leather strap, *dial dimensions 23mm x 26mm.* £300-500





AN 18CT GOLD GENTLEMAN'S AUTOMATIC CALENDAR WRISTWATCH BY PATEK PHILIPPE, CIRCA 1965, model number 3514J, the signed champagne dial with applied gilt baton numerals, outer minute track, date aperture at numeral 3, gilt hands and seconds subsidiary, within polished bezel, reverse with screw down back cover, the damascened movement numbered 1122820, adjusted to heat, cold, isochronism and five positions, 37 jewels and 18k gold rotor, case numbered 316987, cal: 27.460M, on black leather strap with 18ct gold Patek Philippe buckle, movement, case and dial signed, watch head diameter 33mm. £2500-3500



An Extract of Archives will be available to the purchaser of this lot.



34



A LADY'S 18CT GOLD POWERWIND AUTOMATIC WRISTWATCH, BY MIDO, the signed silvered dial with applied gilt baton and X-shaped hour markers, centre sweep seconds hand, automatic movement, case with sealed screwdown back and signed crown, to a brick-link bracelet strap, clasp signed and stamped '750', dial diameter 19mm, wristwatch length 16cm. £600-800

35



A GENTLEMAN'S GOLD FILLED MANUAL WIND WRISTWATCH, BY UNIVERSAL, the signed silvered dial with fine gilt baton hour markers, signed jewelled movement, gold filled case with steel back, numbered '46803 1 1938370', on a later black leather strap with gilt buckle, dial diameter 28mm. £240-280

36



AN OMEGA CONSTELLATION CALENDAR WRISTWATCH HEAD, TOGETHER WITH A LADY'S 9CT OMEGA WRISTWATCH AND A POCKET WATCH, the wristwatch head with signed silvered dial with baton hour markers and date aperture, automatic movement, in gold plated and steel case, with an unassociated expanding mesh-link bracelet strap, in Omega case and box, with papers, the lady's Omega watch with small signed circular silvered dial with baton hour markers, manual wind movement, in 9ct gold case, signed and hallmarked, to a 9ct gold mesh-link bracelet strap, in Omega case and box, with papers, together with a 20th century chrome plated pocket watch with alarm, dial signed 'Mentor', with luminous Arabic numerals; first watch dial diameter 30mm, second watch dial diameter 12mm, third watch diameter 52mm. £200-300



**A BREGUET 18CT GOLD GENTLEMAN'S CLASSIQUE 3337 MOONPHASE AUTOMATIC CALENDAR WATCH, 1994**, the cream cross weave patterned dial with silvered polished off centre chapter ring with black Roman numerals, with day, date, moonphase and lunar calendar above, and blued steel hands, within polished bezel and coin edged band, with cabochon sapphire winder, between straight lugs, the 35 jewelled finely engraved automatic movement visible under glazed display back, signed and numbered 'BREGUET 2645E', on brown crocodile leather strap, with 18k gold Breguet clasp, the case, dial and movement signed, with guarantee booklet and original green leather case and outer cardboard box, *diameter 35.5mm (excluding winder)*. **£6000-8000**

Certificate of Origin and Guarantee confirms the Model Reference 3337/BA/11/286, Watch Number 2645, Date of Purchase 14.5.1994.

*See detail of movement on the frontispiece of this section.*





# Jewellery



# Jewellery

38



A GEM SET FRINGE NECKLACE AND BAR BROOCH, the fringe necklace composed of graduated spectacle set mixed-cut gemstones, including garnet, amethyst, citrine, sapphire, etc. to a fine fancy-link back chain, and Edwardian blue paste and seed pearl bar brooch, mount stamped '9ct', in an unassociated Asprey case, *necklace length 36cm.* £320-400

39



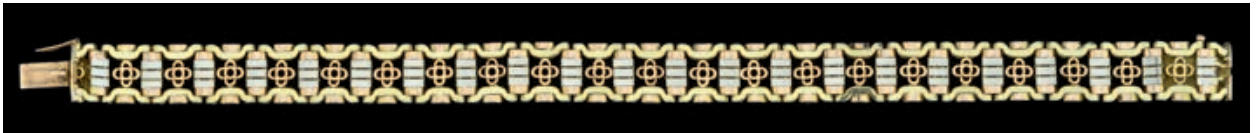
A 9CT CHARM BRACELET AND A 9CT GOLD LADY'S WRISTWATCH, the 9ct gold curb-link chain bracelet, hallmarked, suspending 13 assorted charms, the 9ct gold lady's wristwatch, by Uno, on later 9ct gold chain-link bracelet, *charm bracelet length 18.5cm, gross weight 37gm.* £350-450

40



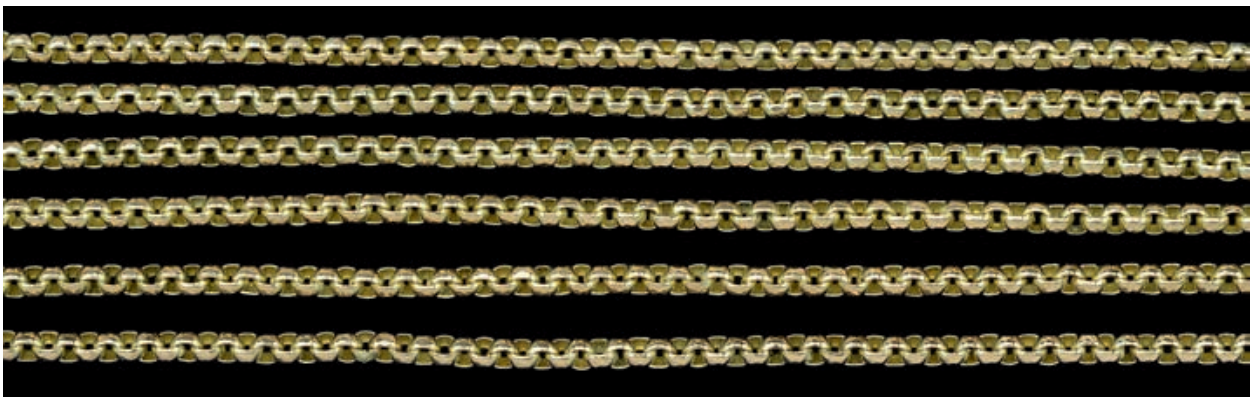
A LATE VICTORIAN FANCY-LINK LONG GUARD CHAIN, composed of figure-of-eight detailed links, stamped '9ct', with swivel fitting, *length 137cm, weight 15.4gm.* £220-260

41



A THREE COLOUR GOLD BRACELET, composed of square pierced decorated panels, each with central quatrefoil, clasp stamped '15' and 'PT' in rectangular punch, *length 170mm, width 9mm, weight 15.4gm.* £200-300

42

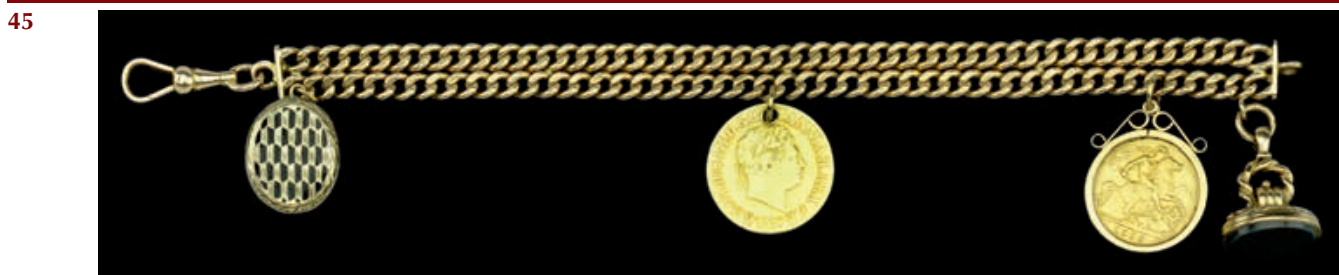


A VICTORIAN GOLD LONG GUARD CHAIN, composed of faceted belcher link, to a swivel fitting stamped '9ct', *length approximately 142cm, weight approximately 37gm.* £400-600

- 43** A CHARM BRACELET, the hollow curb-link chain to heart-shaped padlock clasp, hallmarked for 9ct gold, suspending 12 assorted charms, including a 9ct gold corgie, gross weight 38gm. £300-350



- 44** A GOLD CHARM BRACELET, the 15ct gold hollow curb-link bracelet suspending four coins, comprising two sovereigns dated 1909 and 1964, Austria: one ducat, 1915, and France: five francs, 1867, all in pendant mounts, together with assorted charms including a scarab set pendant, a cornelian inset fob seal, a bloodstone and agate double sided padlock clasp, a miniature 9ct gold penknife, and further modern charms etc, clasp stamped '15' to the tongue, length 19.5gm, gross weight 86.2gm. £800-1000



- 45** A 9CT GOLD CHAIN BRACELET WITH COIN FOBS, the two row uniform curb-link chain bracelet to swivel clasp, suspending a George III sovereign, 1820, drilled, an Edward VII half sovereign, 1905, in pendant mount, a small bloodstone inset fob seal, gold mounted, and an oval locket pendant with black enamel detail, glazed verso, bracelet length 19cm, gross weight 43gm. £800-1000

- 46** A VICTORIAN 15CT GOLD HOLLOW LINK CURB-LINK BRACELET, stamped '15ct', with padlock clasp (unmarked) and added safety chain, with case, the silk signed 'Butt Goldsmith, Chester', bracelet length 20.5gm, gross weight approximately 26gm. £540-600



47



AN EDWARDIAN SAPPHIRE AND OPAL PENDANT, the central oval cabochon opal within an open scrolled surround set with further round cabochon opals and round-cut sapphires, suspended from similarly set bale, mounted in yellow precious metal, to a later curb-link chain, *pendant length including bale 37mm.* £300-500

48

TWO PASTE SET PENDANTS, the first, early 19th century, set with yellow and white paste in closed back collet settings, on a fine fetter and belcher-link chain, the second millegrain collet set with green and white paste, *first length 60mm, second length 40mm.* £100-150



49



A FRENCH WHITE PASTE RIVIERE NECKLACE, the graduated round-cut white paste stones in open claw links, in silver gilt mount, tongue of clasp bearing French boar's head assay mark, one stone lacking, *necklace length 41cm.* £200-300

50



**A TWO ROW CULTURED PEARL NECKLACE BY MIKIMOTO**, the two row of graduated cultured pearls to a pierced yellow precious metal clasp with central cultured pearl accent, stamped '14k' and bearing Mikimoto maker's mark, *pearl diameters range from 3.5mm to 7mm, necklace length 38cm.* £200-300

51



**A VICTORIAN DIAMOND FLOWERHEAD BROOCH**, modelled as a dog rose, the five petals pave set with graduated old brilliant-cut diamonds, with diamond set sepals between, around central pinched collet set old brilliant-cut diamond, with smaller similarly set diamond stamen surround, mounted in gold and silver, *principal diamond approximately 0.75 carats, brooch diameter 33mm.* £2000-3000

52



**TWO 19TH CENTURY GEM SET BROOCHES**, the first, circa 1830s, set with an oval mixed-cut aquamarine within a cannetillework mount in yellow precious metal, the second mid 19th century, set with an oval mixed-cut amethyst within a gilt metal mount, *first brooch length 26.5mm.* £300-400

**53 A COLLECTION OF 13 LATE 19TH / EARLY 20TH CENTURY BAR BROOCHES**, of various designs, mostly gold, some gem set. £400-500

**54 A COLLECTION OF MISCELLANEOUS ITEMS**, to include an opal and diamond cluster ring, (opal cracked and one diamond lacking), a 22ct gold signet ring, a 9ct gold signet ring, two 9ct gold Liverpool CC race badges, with painted enamel Liverbird detail, a cornelian inset gilt metal fob seal, a silver sovereign case, etc. £500-700

55

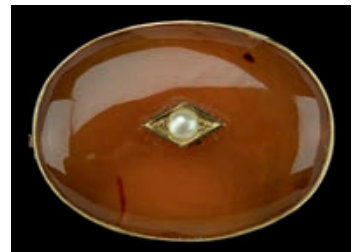


**A LONG CORAL BEAD NECKLACE**, the uniform *Corallium Rubrum* coral beads of approximately diameter 7mm, with five smaller beads to each side of the ring bolt clasp, *total length 181cm.* £300-400

Please note that coral is covered by CITES legislation and may be subject to export and other trade restrictions.

56

**A LATE VICTORIAN 15CT GOLD MOUNTED OVAL CORNELIAN BROOCH**, the polished oval panel centred with a half pearl highlight within gold lozenge setting, stamped '15ct' to the mount, with unassociated box, *length 4cm.* £100-120



57



**A CORAL BEAD NECKLACE, A CORAL SET HINGED BANGLE AND A PAIR OF CORAL EARPENDANTS**, the *Corallium rubrum* graduated bead necklace with ring and bolt clasp, the *Corallium rubrum* set hinged bangle set throughout with two rows of small beads, the upper section with central flared design incorporating an inner row of five larger coral beads, mount not hallmarked, with safety chain, and a pair of *Corallium rubrum* earpendants, each with two bead surmount and suspending an elongated drop below, on screw back fittings, stamped 9ct, *necklace length 49cm, inner diameter of bangle 5.3cm, earpendants length 4.1cm.* £300-500

Please note that coral is covered by CITES legislation and may be subject to export and other trade restrictions.

58

**A FIVE ROW FRESHWATER PEARL NECKLACE**, the five rows of baroque freshwater pearls, untested for natural vs. cultured origin, to a figure-of-eight clasp, each polished hoop with a smaller brilliant-cut diamond set hoop within, mounted in 18ct yellow gold, bearing UK import mark for 1986 and maker's mark 'NDC', *necklace length 44cm.* £500-700



59



A SINGLE STRAND SOUTH SEA PEARL NECKLACE, comprising 57 uniform cultured pearls of pale peach/pink colour, to a reeded oval clasp, stamped '925' and 'JKa', average pearl diameter 10.5mm-11mm, necklace length 66cm. £1000-1500

60

AN 18CT GOLD, DIAMOND AND CORAL CAMEO BROOCH, the *Corallium rubrum* coral cameo of a female bust, within an 18ct yellow gold oval hoop surround highlighted with foliage and flowerheads with brilliant-cut diamond centres, mount hallmarked for Sheffield, 1992, brooch length 36mm. £200-300

Please note that coral is covered by CITES legislation and may be subject to export and other trade restrictions.



61



A CORAL BEAD NECKLACE AND A CORAL SET BROOCH, the necklace composed of slightly graduated short tonneau-shaped *Corallium Rubrum* coral beads, to a plain cylindrical clasp, the brooch composed of a length of coral in a silver cap mount, necklace length 74cm, brooch length 5.2cm. £200-300

Please note that coral is covered by CITES legislation and may be subject to export and other trade restrictions.

62

A COLLECTION OF SEVEN 19TH CENTURY BROOCHES AND A PENDANT, including a star-shaped boss brooch and a circular boss brooch, both in yellow gold with glazed locket backs, another similar panel brooch inset with lapis lazuli, two memorial brooches and two further brooches and a purple paste set pendant. £400-500



63



**AN 18CT GOLD BEE BROOCH BY CROPP & FARR**, realistically modelled, the thorax set with a cluster single-cut diamonds and blue stone eyes, makers mark C & F, import mark for London 1990, *length 2.4cm, weight 7.6gm.* £200-300

64



**A 9CT GOLD AND GEM SET PANTHER BROOCH**, the panther set with sapphire 'spots', a diamond set collar and ruby eyes, hallmarked to the reverse, bearing maker's mark 'GJ', *length 3.7cm, width 3.5cm, gross weight 10.6gm.* £200-300

65



**AN 18CT GOLD BRACELET BY KUTCHINSKY**, the articulated domed design composed of overlapping textured leaves, the clasp fully signed with facsimile signature and maker's mark and hallmarked for London 1970, *length 18.5cm, width 9mm, gross weight 80.9gm.* £2000-3000





66



**AN 18CT GOLD AND DIAMOND FLOWERHEAD NECKLACE**, the six petal flowerhead centred with a brilliant-cut diamond cluster, the individually sized domed petals each pave set throughout with further brilliants, the pendant stamped to the reverse with maker's mark 'CLM' (the Moussaieff workshop mark in Geneva), and double struck with guarantee mark '750', on flattened curb-link back chain, to a lobster claw clasp, stamped '750', *pendant length 2.1cm, over all length of necklace 42cm*, retailed by Moussaieff Jewellers, with retailer's red suede pouch. **£1000-1500**

67



**A CHAIN NECKLACE AND BRACELET SUITE**, BY TIFFANY & Co, composed of oval ropetwist links, with polished X-links between, both with lobster claw clasps, stamped 'Tiffany & Co' and '14k', *necklace length 82cm, bracelet length 18.5cm, gross weight 56.5gm*. **£700-900**

68



**A DIAMOND SET BAND RING**, BY TIFFANY & Co, the yellow gold band channel set each side with square-cut diamonds, and centred with an applied X-shaped motif inset with brilliant-cut diamonds, the shank signed and stamped '750', *ring size M*. **£700-900**

69



A VICTORIAN OVAL SHELL CAMEO BROOCH, carved to depict a Bacchante, with fruiting vines in her hair, gold mounted, with ropetwist border, not hallmarked, length 3.7cm. £100-120

70



A LATE 19TH CENTURY OVAL SHELL CAMEO BROOCH, carved to depict The Descent from the Cross after Peter Paul Rubens, in collet mount heightened with ropetwist detail, the reverse with scratched signature, possibly reading 'J (or S) mouhe', the gold mount with small pendant fitting, not hallmarked, length 5.3cm. £200-300

This unusual cameo subject is taken from Rubens' masterpiece **The Descent from the Cross**, showing Christ's body being lowered from the Cross, attended by mourners St John, Mary Magdalene, the Virgin Mary, Joseph of Arimathea, Nicodemus and Salome (Mary Cleophas). It is the central panel of the triptych painted in 1612-14, commissioned on 7 September 1611 by the Confraternity of the Arquebusiers. The painting is the second of Rubens' great altarpieces for the Cathedral of Our Lady, Antwerp, Belgium, along with The Elevation of the Cross. In 1794 Napoleon removed both paintings and had them sent to the Louvre. After his defeat, they were returned to the Cathedral in 1815, where they remain today.

Copyright by kind permission of the Cathedral of Our Lady, Antwerp.



**A 19TH CENTURY CAMEO BROOCH**, the oval shell cameo carved to depict 'Phoebus and his Horses', the naked winged god, with armour, shield and torch tossed aside, reigning in three rearing horses, collet set within an openwork and ropetwist frame, *cameo measures 39 x 30mm, brooch width 46mm.* £150-200

The subject *Phoebus and his horses* is after a cameo by Tommaso Saulini, illustrated in Malcom Stuart Carr's article 'Tommaso and Luigi Saulini' in *The Connoisseur*, November 1975. The subject was also depicted in a painting by Begigne Gagnerax, in 1791, entitled *Peace Halting the Horses of Mars*. For further reading see *Nineteenth Century Cameos*, by Michelle Rowan, Antique Collectors Club, 2004.



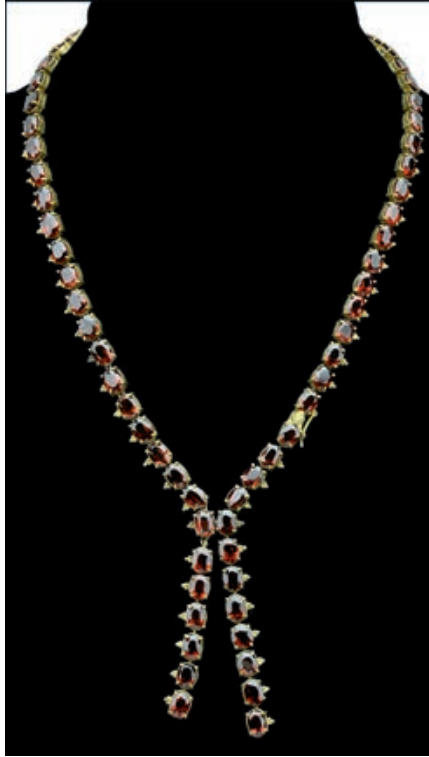
**A VICTORIAN OVAL SHELL CAMEO BROOCH**, carved to depict the classical subject *The Sacrifice of Iphigenia*, within gold scroll decorated mount, *height 5.8cm x width 6.7cm.* £300-400

The subject of the cameo depicts the classical tragedy recorded in Euripides' play *Iphigenia among the Taurians*, fourth century BC. The scene is set prior to the Trojan war. Paris, the Prince of Troy, had abducted Helen, the wife of Meneleus. Meneleus and his brother, the Mycenaean king Agamemnon, responded by gathering a fleet and an army ready to sail to Troy and wage war. But Agamemnon had offended the hunting goddess Artemis (Diana) by killing one of her sacred deer, so she stopped the winds from blowing, leaving their fleet stranded in port. In recompense, Artemis demanded the sacrifice of Agamemnon's virgin daughter Iphigenia (Iphianassa or Iphimede). The girl was brought to the port of Aulis on the pretext that she was to marry the hero Achilles (pictured right, in armour), and there was to be sacrificed. In some versions of the tale, such as Euripides' play, the goddess Artemis relents in the final seconds and spirits the girl away, leaving a deer in her place. In others, the sacrifice occurs, precipitating further tragedies.

The image is taken from an etching by the Italian Baroque artist, **Pietro Testa** (1611-1650), best known as a print maker and draftsman, born in Lucca and later active in Rome. The image depicted here is from an etching with drypoint, published by Giovanni Giacomo de Rossi (1627-1691), circa 1640-42. One example is to be found in the Metropolitan Museum, New York, another in the National Gallery of Art, Washington DC. The copper plate for the print is in the Calcografia Nazionale in Rome. A painting of the same subject by Testa (with minor differences) is in the Galleria Spada in Rome.

*Copyright by kind permission of the National Gallery of Art, Washington DC.*

73



A GARNET NECKLACE, composed of uniform oval mixed-cut garnets claw set in gilt metal link mounts, the chain joined at the front to leave two tassel drops, total necklace length including drops approximately 60cm. £300-500

74



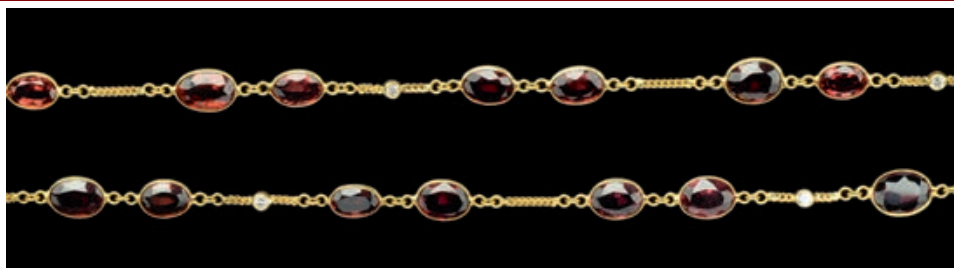
A VICTORIAN CABOCHON GARNET BROOCH, the oval cabochon garnet collet set within a ropetwist surround, mounted in yellow gold, garnet measures approximately 30.5mm x 21.5mm, brooch length 38.5mm. £300-400

75

AN EARLY VICTORIAN GARNET BROOCH/PENDANT AND A GARNET SET RING, the brooch, circa 1840s, of quatrefoil design suspending three drops below, set with oval, round and pear-shaped cabochon garnets in beaded collet settings, the ring composed of a 19th century cluster of foil backed garnets, mounted to a later gold shank, bearing indistinct hallmark, brooch/pendant length 37mm. £200-300



76



AN 18CT GOLD GARNET AND DIAMOND LONG CHAIN NECKLACE, the pairs of oval mixed-cut garnets in spectacle settings, spaced by chevron-link chain connections with brilliant-cut diamond highlights, to an S-shaped clasp, with suspended panel beside clasp stamped '18', length 66cm. £1500-1700

77



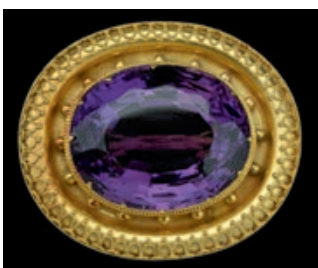
A VICTORIAN GEM SET PENDANT, modelled as a tassel, the chain-link drops with pearl terminals, to pink gem set cap, the whole suspended beneath similarly pink gem set scroll engraved closed crescent surmount, on later fine ropetwist chain, together with a Victorian oval hinged gold locket, with scroll engraved decoration, on fine ropetwist chain, *first pendant length 6cm.* £500-600

78

A PAIR OF AMETHYST EARPENDANTS, the lozenge-shaped bloomed gold drops with raised detail, each centred with a collet set oval mixed-cut amethyst, to later hook fittings, *lozenge drop length excluding fitting 21mm.* £200-300



79



A VICTORIAN GOLD AMETHYST BROOCH, the oval mixed-cut amethyst within milled collet setting, beaded detail and edged with applied ropetwist decoration, the mount with bloomed gold finish, small pendant fitting to reverse, the mount not hallmarked, *length 38mm x width 32mm.* £500-700

80



A THREE ROW CULTURED PEARL AND AMETHYST CHOKER NECKLACE, centred with an oval mixed-cut amethyst and half pearl cluster, with single cultured pearl drop below, between three rows of uniform cultured pearls, with vertical bar spacers, to a 9ct gold slide action clasp set with three further pearls, clasp stamped with maker's mark 'JKa' and '9ct', *length 39cm.* £400-600

81

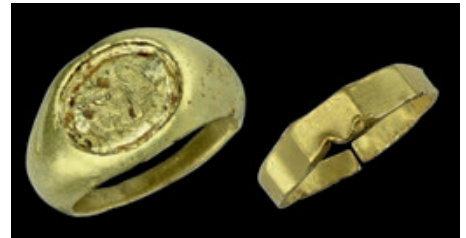


**A ROMAN 'CHILD'S' RING**, the tiny wire band centred with a closed back collet set rectangular cabochon green/blue stone, between beaded shoulders, *external diameter of ring 13mm.* £200-300

Although rings of this small size are commonly catalogued as 'child's rings', C.C. Oman, in his catalogue of rings in the Victoria and Albert Museum, notes: "Rings are now commonly worn on the bottom joint of the finger, but in the past the upper joints were also used, the top joint probably only by ladies. It will be seen, therefore, that small rings must not necessarily be considered as having been made for children, although these also shared in this prevailing form of luxury." See Oman, C.C., *Victoria and Albert Museum, Catalogue of Rings, 1930*, Anglia Publishing, 1993.

82

**A LARGE ROMAN RING MOUNT AND A ROMAN BAND RING**, the large heavy flared ring mount, with oval vacant setting, yellow precious metal, (*untested*) together with a band ring of faceted form, (*split and dented*), *first ring size U, weight 22.4gm.* £800-1200



83



**A SIGNET RING**, in yellow gold, the oval bezel bearing intaglio crest of a spotted boar's head, a sinister, issuing from a coronet displaying three strawberry leaves, together with a further band ring, *signet ring size O, weight 7gm.* £120-180

84

**A GENTLEMAN'S SIGNET RING**, the rectangular central panel bearing applied monogram, between reeded shoulders, in yellow precious metal, unmarked, interior bearing presentation inscription, *ring size Q1/2, weight 20gm.* £350-400



85



A **MINIATURE AUSTRIAN ORDER OF FRANZ JOSEPH**, decorated with red, black and white enamel detail, together with a miniature Order of Franz Joseph gilt metal mounted collar chain, composed of 13 enamel links, together with a pearl set belcher-link chain, (pearls untested for natural origin), and a baton and ball link chain, stamped 18k, *the cross length 3.1cm, with chain length 50cm, second chain length 42cm.* **£300-500**

The **Imperial Austrian Franz Joseph Order** was founded by the Emperor Franz Joseph I of Austria on 2nd December, 1849, on the first anniversary of his accession to the imperial throne. It continued until the dissolution of the Austro-Hungarian Empire in 1918 and was not re-established with the foundation of the Republic of Austria.

86



A **9CT GOLD RAF WINGS SWEETHEART BROOCH**, the letters 'RAF' on green enamel wreath, beneath crown surmount with red enamel detail, between textured wings, stamped '9ct', with case signed 'Boodle and Dunthorne', *length 5.5cm, weight 4gm.* **£100-120**

87



A **9CT GOLD NEW ZEALAND RIFLE BRIGADE BROOCH**, stamped 9ct, with case, a Northumberland Fusiliers brooch, the pin stamped '9ct', with case, a Seaforth Highlanders oval silver brooch, hallmarked for Birmingham, 1911, a 21st Empress of India Lancers silver brooch, hallmarked for Birmingham, 1899, a Gordon's Highlanders silver brooch, hallmarked for Birmingham 1902 and a Queens Own 7th Hussars silver brooch, hallmarked for Birmingham 1899, *first brooch length 5.8cm.* **£150-200**

88



**A GEORGIAN DIAMOND CLUSTER RING**, late 18th / early 19th century, the cluster of rose-cut diamonds in closed back setting with spiral reeded detail to the underside, between bifurcated shoulders with scroll and horizontal banded detail, the cluster silver mounted to a gold shank, with 19th century ring box, ring size J. £600-800

89



**AN 18TH CENTURY GOLD POSY RING**, the plain gold band inscribed to the interior 'My Love to thee Shall Constant be' in italic script with long s, with maker's mark 'JG' in black letter, probably for John Gamon, ring size R. £1000-1500



The goldsmith John Gamon registered this mark in June 1739, see Grimwade A. G., *London Goldsmiths 1697-1837*, Faber & Faber 1976, no 1348.

90



**AN 18TH CENTURY POSY RING**, the gold band with incised foliate and floral detail to the exterior and inscribed to the interior 'You never knew a ♡ more true', in Italic script, with indistinct maker's mark, ring size N. £1000-1500



The same posy, but with a slightly different spelling of 'true' is listed in *English Posies and Posy Rings*, Joan Evans, OUP, 1931, p.111.



91



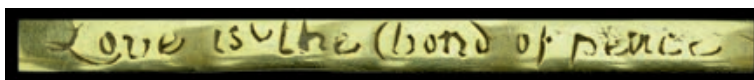
**AN 18TH CENTURY GOLD ENAMELLED POSY RING**, the exterior of the band with foliate detail highlighted in sky blue enamel (most of the enamel lacking), the interior bearing the posy 'Not the value but my love', and the maker's mark 'IC' within an oblong stamp with trefoil terminals, *ring size N, band width 3.2mm.* £1500-2000



92



**AN 18TH CENTURY GOLD POSY RING**, the plain band inscribed to the interior 'Love is(?) the bond of peace' (sic), bearing indistinct maker's mark, *ring size S.* £500-700



This motto is a popular example - it is recorded in various forms in Evans, J: *English Posies and Posy Rings*, OUP, 1931, p73-74.

93



**A LATE 16TH CENTURY GOLD POSY RING**, the broad flat band inscribed to the exterior with a cross potent and the posy 'BOVNDE \* BY \* FATHE' in serified capitals, the ND and the HE ligatured, between raised beaded borders, *ring size P.* £2000-3000

This ring was discovered in Cobb Manor in Gatenby in North Yorkshire in 2012. It has been disclaimed by the Crown under the Treasure Act of 1996, Treasure Ref: 2012-T886, PAS: NCL-5FE897. A copy of the paperwork will accompany the lot.

94



AN INDIAN FRESHWATER CULTURED PEARL AND RUBY NECKLACE, the central pendant composed of a claw set pear-cut ruby drop within a trapezoid hoop surround set with half pearls and round-cut rubies, beneath similarly set triangular surmount, mounted in yellow precious metal, to a single row uniform freshwater cultured pearl necklace, *pendant length 35mm, necklace length 49cm.* **£300-500**

95

A PAIR OF GARNET FLOWERHEAD EARRINGS, each five petal flower head centred with a brilliant-cut diamond, in gilt mounts, and suspended from diamond single stone surmounts, on post fittings, with butterfly attachments, *length 18.5mm.* **£80-100**



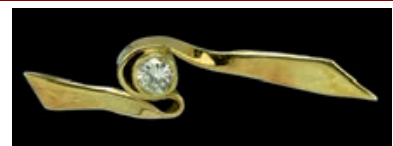
96



A DIAMOND, RUBY, RED STONE SET BOW BROOCH, comprising a tied ribbon bow set with brilliant-cut diamonds, with a further entwined ribbon loop set with round-cut rubies/red stones, to a central ruby and diamond cluster, mounted in yellow precious metal, to double pin fitting, *brooch width 51.5mm.* **£600-800**

97

A DIAMOND SET BROOCH/PENDANT, the brilliant-cut diamond collet set within a ribbon form crossover bar brooch setting, with pendant loop to the reverse, mount hallmarked for 18ct gold, London 1991, with maker's mark 'VP', *diamond approximately 0.60-0.70 carats, brooch length 47mm.* **£800-1000**



98



A CULTURED PEARL SET CHAIN NECKLACE, the yellow precious metal chain of knot links spaced with cultured pearls, chain length 102cm, average pearl diameter 6mm. £600-700

99

A SAPPHIRE AND DIAMOND CLUSTER RING, the oval mixed-cut sapphire within a surround of eight brilliant-cut diamonds, all claw set, to basket mount, shank stamped '585, total diamond weight approximately 0.24 carats, ring size K1/2. £150-200



100



A PAIR OF SAPPHIRE SET EARPENDANTS, each claw set with a cluster surmount with central sapphire within outer border of cubic zirconia, and vertical row of sapphires below, with similar cluster terminal, on post fittings, length 2.7cm. £100-150

101

A VICTORIAN DIAMOND CRESCENT BROOCH, the closed crescent set with graduated old brilliant and rose-cut diamonds, mounted in gold and silver, with detachable brooch fittings, total diamond weight approximately 2.76 carats, brooch diameter 28mm. £1000-1500



102



A LATE VICTORIAN 15CT GOLD BRACELET, composed of polished brick-links and diagonal bar decoration, clasp stamped '15ct' to the reverse, length 18cm, width 9mm, weight 20.3gm. £200-300

103



A DIAMOND SET BRACELET, the fancy chain link bracelet with polished central panel set with two lines of raised trios of brilliant-cut diamonds, mounted in yellow precious metal, clasp stamped '9ct' and '375', bracelet length 20cm, total diamond weight approximately 0.75 carats, weight 21gm. £300-400

104



AN 18CT GOLD BRACELET, composed of slightly bowed vertical matt articulated links, spaced by reeded detail, import marks for Birmingham 1989, length 18.4cm, width 12mm, weight 32.8gm. £600-800

105



A TWO COLOUR CHAIN BRACELET, of heavy faceted fetter links in alternating yellow and white precious metal, clasp stamped '750', bracelet length 22.5cm, weight 54gm. £800-1000

106



A 9CT GOLD BROAD BRACELET, composed of textured vertical articulated links, the front with engraved lozenge decoration, edged with curb-link detail, maker's mark to the clasp 'RB Ltd', and full 9ct gold hallmark, clasp stamped with numbers '3 33/72', length 18.3cm, width 3.1cm, weight 47.9gm. £360-400

107



AN 18CT GOLD DOUBLE CURB-LINK BRACELET, composed of large hollow links, partly with textured laticework finish and partly with polished finish, clasp stamped '750', length 20.5cm, weight 62.1gm. £1600-1800



**AN 18CT GOLD AND DIAMOND PENDANT NECKLACE BY CARTIER**, the pendant of open lozenge design, the outline set throughout with brilliant-cut diamonds, and inset with a similarly set trefoil foliate motif, with baguette-cut diamond detail below, the pendant sliding on a flattened curb-link chain, pendant stamped to the reverse 'Cartier Paris' and numbered 224399, the reverse of the suspensory loop stamped with lozenge maker's mark and eagle's head control mark, the chain clasp similarly stamped with maker's name, lozenge maker's mark and eagle's head mark, together with red Cartier case, *pendant length 3cm (including suspensory loop), chain length 17.2cm.* **£1500-2000**



109



A PAIR OF ART DECO STYLE ONYX, DIAMOND AND EMERALD EARPENDANTS, each set with geometric onyx links with disc shaped terminal, with emerald and diamond detail throughout, gilt mounted, on yellow precious metal post fittings and butterfly fasteners, length 5.3cm. £300-400

110



AN EDWARDIAN ROSE-CUT DIAMOND SET BROOCH, the openwork brooch of slightly curved oblong outline millegrain set with rose-cut diamonds, mounted in yellow and white precious metal, brooch length 67mm. £250-300

This lot has been kindly donated and is being sold on behalf of **Oxfam GB** (Charity No: 612172).

111



A DIAMOND TRIPLE CLUSTER BAR BROOCH, the three clusters, each centred with an old brilliant-cut diamond, within a open claw setting highlighted with four rose-cut diamonds, set within a trifurcated bar brooch, mounted in two colour precious metal, three old brilliant-cut diamonds approximately 0.14 carats each, bar brooch length 6.4cm. £300-500

112



A COLLECTION OF FIVE SOLITAIRE DIAMOND RINGS, three claw set, two illusion set, two with single-cut diamond set shoulders, mounted in yellow and white 18ct gold, the principal diamonds weigh approximately 0.4, 0.07, 0.2, 0.3 and 0.25 carats respectively. £600-800

113



**A DIAMOND AND PEARL BAR BROOCH AND AN ART DECO DIAMOND BROOCH**, the first set with a central pearl (untested for natural or cultured origin) between two collet set old brilliant-cut diamonds, to a scroll engraved bar brooch, mounted in yellow and white precious metal, the second an openwork geometric panel brooch, centred with a brilliant-cut diamond and highlighted with further rose-cut diamonds, mounted in white precious metal, *first brooch total diamond weight approximately 0.7 carats, length 42mm; second brooch length 34mm.* **£700-900**

114



**A SINGLE STONE DIAMOND RING**, the principal brilliant-cut diamond claw set between two smaller brilliant-cut diamonds, to a crossover style entwined ribbon mount highlighted with lines of single-cut diamonds, mounted in 18ct white gold, shank hallmarked and stamped 'Forever', accompanied by an IGI small diamond certificate, *principal diamond weighs 0.28 carats, ring size L.* **£300-400**

The International Gemmological Institute small certificate, number F6G78114, dated 6th May 2016, records the round modified brilliant-cut diamond as weighing 0.28 carats, with a colour grade E and a clarity grade I1.

115



**AN ART DECO SINGLE STONE DIAMOND RING**, the old brilliant-cut diamond claw set, between stepped millegrained rose-cut diamond set shoulders, mounted in white precious metal, shank stamped 'plat', *principal diamond approximately 0.85 carats, ring size K1/2.* **£500-700**

116



**AN ART DECO DIAMOND AND EMERALD BRACELET**, the broad bracelet composed of articulated sections of alternating claw set oval mixed-cut emeralds and collet set brilliant-cut diamonds, with brilliant-cut diamond set geometric links between, mounted in white precious metal, together with a pair of emerald and diamond earrings and a pendant made from gem set sections removed from the bracelet, *bracelet length 16.2cm, width 20mm.* **£2500-3000**

117



**AN AQUAMARINE PENDANT, A GOLD BROOCH AND A CHAIN**, the pendant, circa 1950, centred with a step-cut aquamarine, within a scrolled mount, beneath similarly scrolled bale, mounted in yellow precious metal, unmarked, the ribbon bow brooch suspending a ring bolt clasp, stamped '18ct' and the fine flattened curb-link chain to S-shaped clasp, stamped '22ct', pendant length, including bale, 31mm. £500-700

118

**A 1940s/50s AQUAMARINE BROOCH**, the stylized ribbon bow with fretwork detail, in polished yellow precious metal, centred with a step-cut aquamarine, and a small white stone accent in a lozenge-shaped setting, brooch length 54mm. £200-300



119



**A SMOKY QUARTZ RING AND BROOCH/PENDANT**, the ring with square step-cut smoky quartz with canted corners, claw set to scrolled gallery, mounted in yellow precious metal, the brooch/pendant set with a rectangular step-cut stone claw set within a ropetwist detailed mount, in yellow precious metal, with hinged bale, brooch length 37mm, ring size P. £150-200

120

**AN ODEONESQUE STYLE SAPPHIRE AND DIAMOND RING**, the peaked architectural design centred with a trio of brilliant-cut diamonds, within a surround of channel set calibre-cut sapphires, untested for natural or synthetic origin, mounted in white precious metal, shank stamped '14k', and a single stone diamond ring, claw set with a brilliant-cut diamond between single-cut diamond set shoulders, stamped with French marks, dog's head mark for platinum post 1912, and eagle's head guarantee mark, first ring total diamond weight approximately 0.28 carats, ring size P, second ring size I. £350-400



121

**AN ASSORTED COLLECTION OF JEWELLERY**, including a pierced Greek key band ring, stamped '750' and two plain wedding bands, a fine chain, clasp stamped '750' and two further unmarked, two 9ct gold mounted hardstone inset swivel fob seals, another small fob seal, a medallion of Kremnitz, two pendants, a freshwater pearl set ring, a pair of white paste hoop earrings and two ear studs. £400-500



- 122** A PAIR OF DIAMOND AND RED STONE EARPENDANTS, each with wirework scrolling surmount, suspending a stylised tassel drop below, with diamond set caps, and red stone highlights, on post and hinged clip fittings, stamped with Eastern marks, *length 5.2cm.* £300-500



- 123** TWO 20TH CENTURY BROOCHES, the first a stylized ribbon loop in yellow precious metal, with single-cut diamond set tie detail, stamped '750'; the second a hoop brooch set with cultured pearls, mounted in 18ct yellow gold, pin bearing UK import mark, *first brooch length 45mm, weight 9.5gm, second brooch diameter 23mm, weight 4.1gm.* £200-300

- 124** A DIAMOND AND SYNTHETIC RUBY COCKTAIL RING, CIRCA 1940s, the odeonesque ring set with baguette-cut synthetic rubies and single-cut diamonds, mounted in yellow and white precious metal, shank stamped '18k' and 'Argentina', *ring size L.* £300-500



- 125** A THREE STONE DIAMOND RING, the three old brilliant-cut diamonds rubover set within a heavy yellow precious metal band, stamped '18ct', *total diamond weight approximately 1.6 carats, ring size P.* £600-800

- 126** AN INDIAN SEED PEARL AND EMERALD NECKLACE, the ropetwist necklace of seed pearls to a cord back, suspending central stylized pendant drop, set with round-cut emeralds and half seed pearls, mounted in yellow precious metal. £150-200

127



A SIX ROW CULTURED PEARL FESTOON NECKLACE, the six graduating rows of mostly uniform cultured pearls linked by wirework spacer bars and set to a slim slide action barrel clasp, the yellow precious metal clasp unmarked. together with an additional loose similar barrel clasp for a six row necklace, *length of longest row of pearls 53.5cm.* £400-500

128

AN 18CT GOLD THREE COLOUR THREE ROW CHAIN NECKLACE, comprising three graduating rows of fancy bead link chains, to a large ring and bolt clasp, bearing maker's mark 'GA' and European convention mark for 18ct gold, *longest chain length 46cm, gross weight 25.2gm.* £400-500



129

A MIXED LOT OF JEWELLERY, including seven various pairs of earrings/earclips, four late 19th/early 20th century bar brooches, three gold and gem set rings (af) and one silver and paste set example, a Wedgwood cameo brooch, further brooches, a bracelet and a wristwatch. £300-400

130

A COLLECTION OF JEWELLERY, comprising a cultured pearl necklace, a large amethyst pendant, stamped '14k', on chain, a smoky quartz brooch, a smoky quartz dress ring, a turquoise and pearl clasp, three stone amethyst brooch, etc. £500-600

131



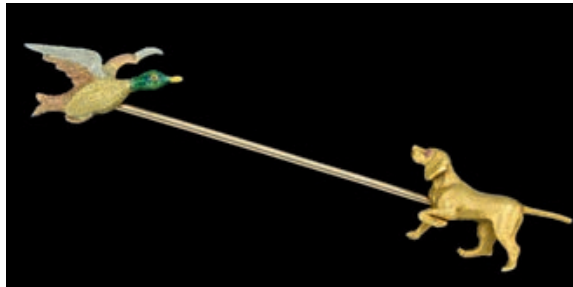
AN 18CT GOLD PHEASANT BROOCH BY CROPP & FARR AND AN 18CT GOLD AND DIAMOND SWALLOW BROOCH BY THE SAME MAKER, the pheasant with textured feathers, brilliant-cut diamond set collar and ruby eye, fully hallmarked to the reverse, with makers mark C & F, the swallow in two colour 18ct gold, with diamond detail to the body and tail, with stamped maker's mark, both brooches with import marks for London 1990, *first brooch length 5.4cm, second brooch 2.4cm.* £250-350

132



**A 9CT GOLD CHAIN NECKLACE AND A 9CT GOLD HORSE BRACELET**, the chain necklace of fancy box-links, clasp stamped '9k', with additional panel link bearing UK import marks, the bracelet composed of horse head panel links, with round-cut sapphire eyes, hallmarked and bearing maker's mark 'HG', necklace length 80cm, weight 29gm, bracelet length 20cm, weight 11gm. £300-400

133



**AN EARLY 20TH CENTURY HUNTING JABOT PIN**, one terminal with enamelled duck in flight, the second, a hunting dog giving chase, the duck with green enamelled head, and three colour precious metal textured feathers, the dog terminal modelled in yellow gold with cabochon red stone eyes, detaching from the pin and stamped to the reverse '15ct plat', length over all 7.5cm. £250-300

134



**A 9CT GOLD NOVELTY STIRRUP-LINK BRACELET AND A THREE COLOUR FRINGE NECKLACE**, the bracelet composed of links modelled as stirrups, with buckle links between, clasp hallmarked and bearing maker's mark 'HG', the three colour necklace composed of slightly graduated textured fringe links, clasp stamped '9K', bracelet length 19.5cm, necklace length 37cm. £400-460

135



**AN ENAMELLED HORSE AND JOCKEY BROOCH, BY HANCOCKS**, modelled as a jumping horse, with a jockey in seat, in enamelled plain black silk and hat and white jodhpers, in 18ct yellow gold, hallmarked for Birmingham, 1987 and bearing maker's mark 'H&Co', brooch length 36mm. £800-1200

136



**A SMALL COLLECTION OF JEWELLERY**, comprising an embossed track-link bracelet in yellow precious metal, an onyx panel fringe necklace, a pair of 9ct gold cufflinks, a pair of 9ct gold ropetwist hoop earrings and assorted other items, *bracelet length 20cm.* £300-500

137



**TWO MEMORIAL BROOCHES**, the first a late 18th/early 19th century example, of navette shape, displaying two locks of hair (one blond, one brunette) under glass, within a blue and white enamel border, the second, circa 1830s, with glazed central panel within a frame surround with engraved floral detail, both mounted in gold, *first brooch length 42.5mm, second brooch length 28mm.* £260-320

138

**A PAIR OF VICTORIAN BANDED AGATE SET EARPENDANTS AND A HARDSTONE BROOCH**, the earrings set with banded agate cabochons in rolled gold ropetwist mounts, with screw back fittings, the oblong brooch inset with hardstones in chequerboard design, mounted in silver, *earpendant length 26mm, brooch length 7.3cm.* £60-80

This lot has been kindly donated and is being sold on behalf of **Oxfam GB** (Charity No: 612172).



139



**THREE LATE 19TH CENTURY SCARAB BEETLE BROOCHES**, each set with a green beetle to the centre of a bar brooch mount, all mounted in yellow gold, two stamped '9ct', £100-120

140



**A LAPIS LAZULI AND SEED PEARL SET SILVER GILT BRACELET**, composed of graduating oval lapis lazuli cabochon panels within seed pearl and faceted black stone borders, with flowerhead highlights between, stamped Dutch marks including silver guarantee mark (single sword mark for .833 standard) to the tongue of the clasp, *length 17.5cm.* £200-300

141



**A 9CT ROSE GOLD GATE-LINK BRACELET WITH PADLOCK CLASP**, with textured and polished links in diagonal stripe design, padlock clasp stamped '9c' and 'CDB', bracelet length 19.5cm. £240-260

142



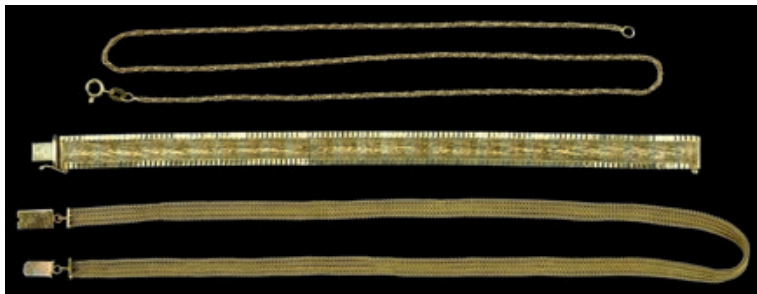
**A 9CT ALBERT CHAIN WITH SWIVEL FOB**, the graduated curb links, each stamped '9c', to a similarly marked T-bar, suspending a swivel fob seal inset with cornelian and bloodstone, mount stamped '9c', Albert chain length 43cm, gross weight of chain 48gm. £500-700

143



**A 9CT ROSE GOLD SOLID CURB-LINK CHAIN NECKLACE AND MATCHING BRACELET**, ADAPTED FROM A SINGLE ALBERT CHAIN, each link stamped with partial hallmark for 9ct, both with swivel fasteners, necklace length over all 47cm, bracelet length 22cm, gross weight 82.7gm. £600-800

144



**TWO CHAINS AND A BRACELET**, comprising a three colour textured panel-link bracelet, clasp stamped '750', a 19th century gold mesh-link ribbon chain necklace, unmarked and a fancy-link necklace, clasp stamped '750', bracelet length 19cm, ribbon chain necklace length 43cm, fancy-link chain necklace length 51cm. £500-700

145



A PAIR OF GOLD EARRINGS, BY MAPPIN AND WEBB, of stylized polished scroll design in 18ct yellow gold, stud fittings stamped '750', bearing UK import marks and signed 'MN&WB', length 35mm, weight 8.5gm.

£100-150

146

AN 18CT GOLD MOUNTED GENTLEMAN'S SINGLE STONE DIAMOND RING, the old brilliant-cut diamonds rubover set within slightly peaked yellow gold band, hallmarked for London, 1976, diamond weight approximately 0.5 carats, ring size U.

£300-400



147



AN 18CT GOLD AND DIAMOND SPRUNG SERPENT BANGLE, of coiled formation, the head inset with two brilliant-cut diamond eyes, the open mouth revealing a forked tongue, the body composed of lozenge-shaped mesh links throughout, stamped '750' to the underside of the head, total diamond weight approximately 0.30 carats, overall length approximately 53cm, gross weight 85.4gm.

£3000-3500

148



A NOVELTY LION BROOCH, the caricatured lion with textured fur, round-cut coloured stone eyes, nose and tongue, mounted in yellow precious metal, with white precious metal muzzle and whiskers, length 45mm. £500-700

149



AN EASTERN GOLD AND ENAMEL DRESS RING AND EARRINGS, comprising a marquise-shaped panel ring and a pair of earrings with tassel drops below, of filigree form with polychrome enamel highlights, including birdhead detail, ring stamped '916' and '21ct', both ring and earrings stamped 'KDM', ring panel measures 39.5mm x 16.5mm, earring length 41mm, gross weight 17gm. £300-400

150

A DIAMOND SET WINGED DRAGON BROOCH/PENDANT, the coiled mythical beast with textured fur and feather detail to back and front, one wing pave set with rose-cut diamonds, with a claw set old brilliant-cut diamond clasped in its jaws and a round-cut ruby eye, ruby untested for natural or synthetic origin, with brooch fitting verso and plain suspensory loop, in yellow precious metal, unmarked, suspended on a flattened curb-link chain, ring bolt clasp stamped '9k', principal diamond weight 0.3 carats, pendant length 33mm. £400-600



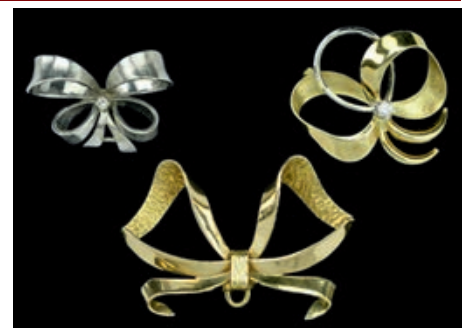
151



A NOVELTY BROOCH AND TWO PENDANTS, the first modelled as a scorpion, set with mixed-cut blue sapphires and round-cut white sapphire eyes, mounted in yellow precious metal; the second modelled as a long tailed fish, with brilliant-cut diamond set fins and calibre-cut sapphire set tail, mounted in yellow precious metal, stamped '750, 18k'; the third pendant/charm modelled as a fish, with mottled glass body and textured 9ct yellow gold head and tail, first brooch length 59mm. £400-500

152

TWO MID 20TH CENTURY BOW BROOCHES AND ANOTHER, the first of two colour precious metal, stamped '750', with central claw set brilliant-cut diamond highlight, the second in 9ct white gold, bearing import marks, with central claw set brilliant-cut diamond highlight, the third in yellow precious metal, with loop to suspend fob watch or similar below, first brooch width 26mm. £360-400



153



A SYNTHETIC ORANGE SAPPHIRE AND DIAMOND DRESS RING, the central cushion-shaped mixed-cut orange synthetic sapphire pinched collet set within a cluster surround of rose/lasque-cut diamonds, to trifurcated shoulders and foliate shank, mounted in gold and silver, unmarked, *sapphire measures 14.5mm x 12.5mm, ring size Q.* £500-700

154

AN 18CT GOLD MOUNTED CITRINE AND DIAMOND DRESS RING, the step-cut sherry coloured citrine in four claw setting, between diamond set shoulders of scrolling design, shank stamped '18ct', *ring size N.* £200-300



155



TWO GEM SET RINGS, comprising a 1960's bombe dress ring set with an oval cabochon amber, between foliate shoulders with claw set round-cut white stone highlights, yellow precious metal mount stamped '14k', (amber untested for origin, treatment or enhancement), together with an emerald and diamond ring, the three oval mixed-cut emeralds claw set with pairs of small brilliant-cut diamonds between, *first ring size L, second ring size N.* £300-400

156

A YELLOW AND WHITE DIAMOND CLUSTER RING, the central brilliant-cut brownish yellow diamond claw set within an undulating surround of smaller claw set brilliant-cut white diamonds, in wirework basket setting, mounted in white precious metal, *principal diamond untested for treatment, principal diamond weight approximately 1.05 carats, remaining total diamond weight approximately 0.8 carats, ring size J1/2.* £1800-2000





157

**A JUGENSTIL STYLE AMBER SET NECKLACE**, the pendant centred with a cabochon amber in square collet setting between triple arcs decoration to each side, and suspending two amber set pendant drops below in closed settings, (amber untested for treatments), the pendant on fancy link chain, both links to either side of the clasp with stamped marks, Polish mark for post 1963, for 800 standard silver, and two stamped marks with initials, possibly N O, the second stamp with first initial R, necklace length 61cm, pendant length 4.5cm. **£100-200**



158



**A DANISH SILVER BROOCH BY GEORG JENSEN, A DANISH SILVER COLLAR NECKLACE BY JACOB HULL AND AN ENAMELLED BRACELET**, the brooch of a kneeling deer, numbered '256', designed by Arno Malinowski, with maker's mark and hallmarked for London, 1961, together with a Danish silver rigid collar necklace by Jacob Hull, with facsimile signature and stamped 'B & D', (commissioned by Buch & Deichmann), with sprung hook clasp, and an enamelled bracelet composed of slightly concave rectangular panels, decorated in enamels, with pink roses and green foliage against a white ground, stamped '935S', brooch length 4.5cm, collar inner diameter 11.5cm, bracelet length 19cm. **£180-200**

**Arno Malinowski** (1899-1976) was a successful silver designer, sculptor, ceramist, engraver and medalist, training at the Royal Danish Academy of Fine Arts and School of Sculpture in Copenhagen from 1919-1922. He worked for Georg Jensen between 1936-1944 and again from 1949-1965, creating designs for jewellery and hollow ware. His designs often included stylised animals, the Kneeling Deer being one of his most popular which he designed in 1937.

**Jacob Hull** worked in Denmark, becoming well known in the early 1970s for his jewellery, mainly made in silver and silver-plate. He exhibited internationally and his jewellery was on sale in Illums Bolighus, the principal retail outlet for Danish design. All his items were handmade at Hull's own workshop, but to meet the demand for some of the more popular pieces produced for Buch & Deichman, he employed an assistant. He insisted that all pieces leaving his workshop were signed. He was also a skilled sculptor, and his work was accepted at the annual Charlottenburg exhibitions. He died tragically in a house fire at his home in Djursland, Jutland in 1993.

159

**A COLLECTION OF SILVER JEWELLERY**, including a silver dress ring, by Georg Jensen, signed and numbered '89', and a 20th century copy of a traditional Viking brooch, by David Andersen, together with a stylised silver bracelet, a silver wrapover band ring, a cabochon amethyst pendant and a cabochon amethyst set bar brooch, first ring size M1/2. **£300-400**

The first ring was designed for Georg Jensen by Henning Koppel (1918-1981), a highly original designer who, during the late 1940s and 1950s introduced bold abstract, sculptural forms to the Jensen repertoire.

The Viking brooch is part of the 'Saga' series produced by David Andersen in 1960s, which took its inspiration from Danish archaeological finds (300AD -1000AD) on display in the Oslo Museum.



- 160** TWO SILVER RINGS, BY GEORG JENSEN, both of stylized wavy design, both signed and stamped '925S, Denmark', one numbered 'A77 A', the other '126', both rings size L1/2. **£100-120**



**161**



A DANISH SILVER BROOCH, BY GEORG JENSEN, of polished freeform triangular design, stamped 'Denmark 925S', with post-1945 maker's mark, Denmark Assay Office mark and the International Convention Mark (Common Control Mark) for Silver (925), length 7.8cm. **£60-80**

**162**

- TWO SILVER RINGS, BY GEORG JENSEN, both of stylized wavy design, both signed and stamped '925S, Denmark', one numbered 'A77 A', the other 'A77 B', rings size K and M1/2. **£100-120**



**163**



A PAIR OF DANISH SILVER BALL EARRINGS, BY GEORG JENSEN, each comprising a spherical polished ball on arched support with screw fitting, the ball numbered '141' with post-1945 maker's mark, the fittings stamped '925S Denmark', diameter of ball 13.5mm. **£80-120**

**164**

- A DANISH SILVER BANGLE, BY GEORG JENSEN, of rigid design, incorporating a stylised twist detail, stamped '925 Denmark', with post-1945 maker's mark, Denmark Assay Office mark and the International Convention Mark (Common Control Mark) for silver (925), inner diameter 56mm. **£100-150**



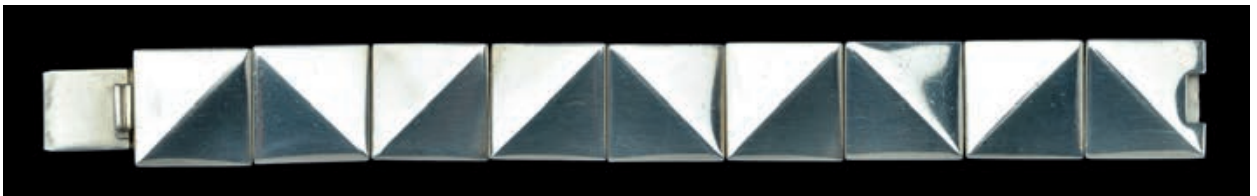
165



A DANISH SILVER CUFF BANGLE, BY GEORG JENSEN, DESIGNED BY IBE DAHLQUIST, mid 1960s, the bangle of angular folded hoop design, numbered '189', stamped '925 sterling', with maker's mark, length 7.5cm. £200-300

**Ibe Dahlquist (1924-1996)** is one of Sweden's prominent recent silversmiths. She studied at the Swedish School of Arts, Crafts and Design in Stockholm, after which, she started her own silver workshop with Olof Barve. Their breakthrough came in the mid 1950s with the exhibition 'Contemporary Jewellery' where they exhibited a series set in silver with fossils and rocks from Gotland beaches. In 1965 Ibe Dahlquist began designing modernist jewellery for Georg Jensen.

166



A DANISH SILVER BRACELET, BY GEORG JENSEN, DESIGNED BY HANS HANSEN, composed of square faceted panels with articulated links between, stamped to the reverse of the clasp with post-1945 company mark, with the designer's facsimile signature and import marks for London 1993, length 15.6cm. £200-300

**Hans Hansen (1884-1940)** opened a goldsmith shop and smithy in Kolding, Denmark about 1906. By the 1920s, Hansen was producing his own line based on his and H.F. Gross' designs. Initially the company produced flatware. Once that was successful, they started designing and making jewellery. The first pieces were designed by Hansen himself around 1931 but the production of jewellery really began in earnest in 1932 with a collection designed by Hansen's son Karl Gustav Hansen, (born 1914). After his father's death in 1940, at just 56 years of age, Karl Gustav took over the Hans Hansen silversmithy. In 1992 the firm joined with the Georg Jensen company.

167

A DANISH SILVER 'BUTTERFLY' BRACELET, BY GEORG JENSEN, DESIGNED BY EDVARD KINDT-LARSEN, composed of a line of shaped and flared baton links, to a baton and ring clasp stamped 'Sterling Denmark', with post-1945 maker's mark, numbered '104A', and with import marks, length 19cm.

£200-300

**Edvard Kindt-Larsen (1901-1982)** was a Danish architect and furniture designer, who also worked in the area of applied arts. He often worked with his wife Tove Kindt-Larsen, a fellow architect and accomplished designer. Both had studied under Kaare Klint at the Royal Danish Academy of Fine Arts in the late 1920s. From the 1930s to 1960s, the couple were amongst Denmark's most prominent designers, active in the areas of architecture, furniture, silver, textiles and jewellery.



168



AN ARTS AND CRAFTS BAROQUE PEARL NECKLACE, the long yellow gold belcher-link chain spaced with baroque pearl highlights, pearls untested for natural vs. cultured origin, necklace length 142cm. £600-800

169

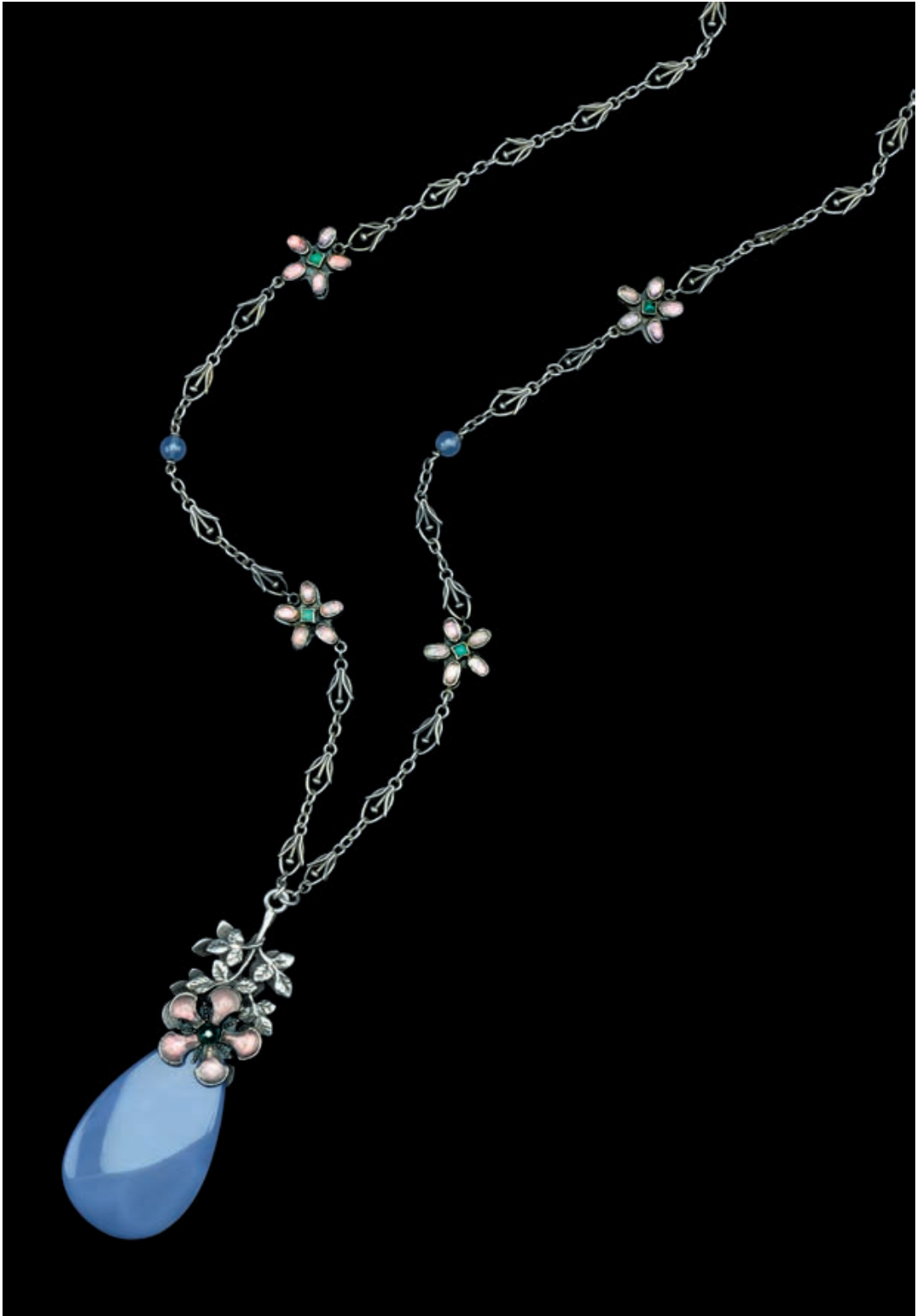
AN EARLY 20TH CENTURY TURQUOISE AND BAROQUE PEARL BAR BROOCH, the bar brooch with collet set cabochon turquoise terminals, to central baroque pearl in cage mount, suspending three similar caged drops below, two baroque pearls and one turquoise bead, with chain swags between, mounted in yellow gold, (pearls untested for saltwater vs freshwater origin), brooch length 41mm. £120-180



170



TWO ART NOUVEAU BROOCHES AND AN EDWARDIAN BROOCH, the first set with three cabochon opals, the second set with a cabochon green stone and stamped '9ct', the third a small hoop brooch highlighted with a millegrain collet set aquamarine and rose-cut diamond set foliate detail. £200-300



**AN ARTS AND CRAFTS BLUE CHALCEDONY AND GEM SET PENDANT NECKLACE**, the central pendant with large polished blue chalcedony tear-shaped drop, beneath a double-sided flower head and foliate spray surmount, the flower heads each set with six cabochon axe-head shaped petals of gem stones, in simple collet settings, beneath trefoils of leaves, suspended from a continuous fancy-link chain spaced with four smaller double sided five petal cabochon flower heads with green stone centres, and two blue chalcedony spacer beads, the pendant and chain unmarked, *pendant length 18.8cm, chain length 94cm.* £500-700

172



AN 18CT GOLD CABOCHON MULTI GEM SET NECKLACE, composed of amethyst, citrine, aquamarine, quartz and garnet, the cabochon stones in linked collet settings, with central pendant drop, to fine flattened curb-link back chain, and ring and bolt clasp, with additional ring links, with plaque besides clasp stamped with maker's mark 'JC Ld', and full 18ct gold hallmark, necklace length 38.5cm. £1500-1800

173

AN 18CT GOLD PADPARADSCHA SAPPHIRE CLUSTER BRACELET AND DRESS RING, the ring composed of flowerhead clusters of pear-cut sapphires with chain connections between, to clasp stamped '750', and a similarly set cluster ring of marquise-cut sapphires, between textured shoulders, shank bearing maker's mark 'DK' and hallmarked for Birmingham, 2006, (all stones untested for treatments), ring size N, bracelet length 20cm.



£400-600

174



A GEM SET MATCHED SUITE COMPRISING A BRACELET, DRESS RING, PENDANT AND EARSTUDS, comprising a line bracelet and single stone earstuds, set with oval mixed-cut stones claw set in yellow precious metal, stud fittings hallmarked for 9ct gold, bracelet clasp stamped '375', together with a flowerhead cluster ring of oval-cut stones claw set around central collet set diamond, mounted in 9ct gold, shank hallmarked, and flowerhead pendant of pear-cut stones around a central diamond cluster, mounted in white precious metal, stamped '375'. £300-400

175

AN OPAL RING AND MATCHING PENDANT, each claw set with an oval cabochon opal, within a polished hoop surround, mounted in yellow precious metal, together with a small pair of pear-shaped cabochon opal earstuds, ring size M, pendant length (including suspensory loop) 16.5mm £200-300



176

A PAIR OF 9CT GOLD MOUNTED HALF HOOP LAPIS LAZULI EARRINGS, with hinge and post fittings, a pair of lapis lazuli bead and cultured pearl earpendants on post fittings, a plain lapis lazuli polished bangle and a 9ct gold mounted oval onyx set brooch, first earrings length 16mm. £100-140

177



A GREEN GROSSULAR GARNET NECKLACE, composed of briolette-cut garnet beads, to a tubular-link gold back chain, clasp stamped '750', necklace length 41.5cm. £200-300

178

AN 18CT GOLD AQUAMARINE AND SAPPHIRE NECKLACE, composed of spectacle set oval and triangular cut aquamarines spaced by smaller oval sapphires, with central pendant drop, on fine belcher-link back chain, to figure-of-eight shaped clasp, and plaque stamped with maker's mark 'JC Ld' and full 18ct gold hallmark, necklace length 56.5cm. £800-1000



179



A PERIDOT CLUSTER RING AND PENDANT, the ring with oval mixed-cut peridot within a surround of small brilliant-cut diamonds, claw set to basket mount, shank hallmarked for 9ct gold, the pendant composed of a cluster of oval, round, pear and marquise-cut peridots, mounted in white precious metal, stamped '925', on a fine curb-link chain, ring size N, pendant length 17mm. £200-300

180

A MATCHED MULTI-COLOURED GEM SET SUITE, comprising a line bracelet channel set with a rainbow of square scissor-cut gemstones, mounted in 9ct white gold, hallmarked and bearing maker's mark 'DK', together with a ring and half hoop earrings set with a rainbow of round or square scissor-cut gemstones, with small diamond highlights, mounted in 9ct yellow gold, hallmarked, the coloured gemstones remain untested, bracelet length 19cm, ring size N1/2. £300-500



181

A COLLECTION OF FOUR RINGS AND A BAR BROOCH, comprising a ruby and diamond set wishbone ring, yellow precious mount stamped '14k', a sapphire and diamond cluster ring, shank stamped '18ct', a 9ct gold mounted floral dress ring, with sapphire highlights, a cabochon green stone dress ring, (stone cracked), and a rectangular scissor-cut aquamarine bar brooch, mount stamped '585'. £400-500

182



A 19TH CENTURY NOVELTY OPAL BROOCH, the oval opal and matrix panel carved as a small boat on choppy waters, a small yellow gold sailor sitting in the boat, the panel set within a yellow gold ropetwist mount, *brooch length 29mm.* £250-300

183

A LATE 19TH CENTURY TURQUOISE BROOCH, of knot design, highlighted with collet set round cabochon turquoise, with two similarly set drops terminals, in original semi fitted case, signed 'H.L.Brown, 65 Market Place, Sheffield, Jeweller by appointment to the Duke of Norfolk and the Duchess of Norfolk', *length 39mm.* £120-180



184



A VICTORIAN TURQUOISE SET BOSS BROOCH WITH FRINGE, the domed boss pave set with cabochon turquoise, to a central rose-cut diamond accent, to a round panel surround highlighted with further turquoise cabochons and applied wirework detail, within ropetwist border, glazed locket verso, suspending a graduated fringe of snake-link chain drops with tapered terminals, *brooch diameter 35mm.* £400-500

185

A MID VICTORIAN BOSS BROOCH, CIRCA 1860, the central round boss in blue enamel with half pearl, raised on scrolls to a hoop surround with applied wirework decoration, beneath a ribbon band with three lozenge-shaped enamel and half pearl motifs, the whole suspending chain swags and three spherical and tapered bead drops below, with applied wirework, *brooch length 8.7cm.* £200-300





186



A 19<sup>TH</sup> CENTURY BASKET PENDANT AND DIAMOND AND ENAMEL CLOAK PIN, the woven wirework basket pendant containing a cluster of seed pearls, the suspensory loop bearing French eagle's head assay mark, suspended from an unassociated cloak pin, comprising two matching small brooches linked by a belcher-link chain, each circular brooch decorated with blue guilloché enamel beneath a lattice of millegrain collet set rose-cut diamonds, to a rose-cut diamond set border, mounted in gold and silver, *basket pendant length 21mm, cloak pin brooch diameter 11mm.* £300-500

187

A VICTORIAN DIAMOND SET HEART-SHAPED LOCKET ON CHAIN, the locket centred with an old-cut diamond, within textured finish, opening to reveal compartment, on 15ct gold chain spaced with pearls (untested for natural origin), *locket length 22mm, chain length 41cm.* £200-300



188



A LATE 19<sup>TH</sup> / EARLY 20<sup>TH</sup> CENTURY GOLD CURB-LINK BRACELET, the links alternately collet set with cabochon turquoise and half pearls, clasp stamped '9ct', *bracelet length 18cm.* £140-160

189

A LATE VICTORIAN GOLD CORAL AND HALF PEARL HINGED BANGLE, the upper section alternately set with coral and half pearls, between beaded borders, not hallmarked, *inner diameter 5.6cm, weight 13.5gm.* £100-150

Please note that coral is subject to CITES legislation and may be subject to export and other trade restrictions.



190



**A GEM SET BANGLE AND A DIAMOND BAR BROOCH**, the trifurcated wirework hinged bangle highlighted with a sapphire (untested for synthetic vs. natural origin) and two old brilliant-cut diamonds in raised collet settings, mounted in yellow precious metal, unmarked, together with a single stone diamond bar brooch, the old brilliant-cut diamond millegrain collet set within plain bar, *bangle total diamond weight approximately 0.3 carats, brooch diamond weight approximately 0.3 carats.*

£400-600

191

**A SAPPHIRE AND DIAMOND RING**, the three graduated cushion-shaped mixed-cut sapphires with trios of old single-cut diamonds between, mounted in yellow and white precious metal, to a scrolled gallery and reeded shoulders, shank stamped '18ct', *ring size N1/2.*

£600-800



\* 192



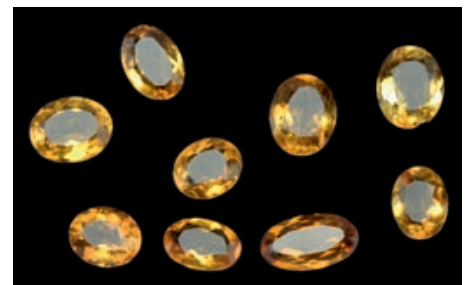
**AN UNMOUNTED DEMANTOID GARNET AND TWO FURTHER UNMOUNTED STONES**, the demantoid garnet of oval mixed cut, together with a round-cut blue topaz and a step-cut aquamarine, *all stones untested for treatment, the demantoid garnet measures 5.8mm x 5.1mm x 4.3mm, the blue topaz measures 15.8mm diameter x 8.9mm and the step-cut aquamarine measures 12mm x 9.3mm x 6.1mm.*

£600-800

\* 193

**A COLLECTION OF 9 UNMOUNTED CITRINES**, all oval mixed-cut stones, with some variation in proportion and size, *largest stone measures 13.5mm x 10.5mm, gross weight 9gm.*

£200-300



194



**TWO MID 20TH CENTURY GEM SET BROOCHES**, the first of giardinetto design, with flowerheads of cultured pearls within surrounds of claw set round-cut ruby, sapphire and emerald petals, between textured leaves, mounted in yellow precious metal, the pin stamped '750, 18'; the second brooch comprising a spray of claw set round-cut sapphires, with piercedwork ribbon bow, highlighted with single-cut diamonds, mounted in 18ct yellow and white gold, hallmarked for Birmingham, 1963, and bearing maker's mark 'C&F' for Crop and Farr, *first brooch width 47mm, weight 17gm, second brooch length 51mm, weight 12gm.* £300-400

195



**AN 18CT GOLD AND DIAMOND SET CHAIN NECKLACE**, the solid uniform curb-link chain centred with a panel of five graduating brilliant-cut diamonds, the panel stamped to the reverse with the European convention mark for 18ct gold, clasp stamped '750', *total diamond weight approximately 0.60 carats, length 44.5gm.* £800-1000

196



**A PLATINUM THREE STONE DIAMOND RING AND A PLATINUM DIAMOND HALF HOOP RING**, the first with three collet set graduated emerald-cut diamonds, mounted in platinum, shank hallmarked, the second channel set to the front with baguette-cut diamond, mounted in white precious metal, stamped 'PT 950', *first: total diamond weight approximately 0.7 carats, first ring size K, second ring size L.* £400-600

197

**A DIAMOND HALF HOOP RING**, channel set with 10 brilliant-cut diamonds, to 18ct white gold setting, shank inscribed, ring size N (leading edge). £250-300



198



A 1960s DIAMOND BROOCH/PENDANT, the abstract brooch of scrolled ribbon form highlighted with claw set brilliant-cut diamonds, mounted in white precious metal, with hinged pendant fitting, *total diamond weight approximately 0.95 carats, brooch length 32mm.* £300-400

199

A PAIR OF DIAMOND SET EARPENDANTS, each with wirework trefoil surmount and suspending a scrolling foliate drop below, set throughout with brilliant-cut diamonds, on post fittings with screw thread and butterfly backs, white precious metal mounted, unmarked, *total diamond weight approximately 1.40 carats, length 3.5cm.* £600-800



200



A COLLECTION OF AMETHYST SET JEWELLERY, comprising a line bracelet of claw set oval-cut amethysts mounted in 9ct white gold, clasp hallmarked, together with a single stone cushion-shaped fancy-cut amethyst ring, mounted in white gold with white stone highlights to the shoulders, and a pair of oval-cut amethyst drop earpendants, mounted in yellow precious metal, stamped '375', *bracelet length 19.5cm, ring size R.* £400-600

201

A CULTURED PEARL NECKLACE AND BRACELET SUITE, the necklace composed of uniform cultured pearls on knotted silk, to a clasp concealed within a cultured pearl, tongue stamped 'JKa' and '750', the bracelet of uniform cultured pearls to a polished spherical yellow gold clasp, similarly marked, *necklace length 47cm, average pearl diameter 7.2mm, bracelet length 19cm, average pearl diameter 7.3mm.* £300-400



202



A SINGLE ROW CULTURED PEARL NECKLACE, the graduated pearls to a small rectangular clasp in yellow precious metal, with scroll engraved decoration, bearing indistinct lozenge-shaped maker's mark, *the pearl diameters range from 8mm to 4.5mm, necklace length 55cm. £120-150*

203

A PAIR OF 14CT GOLD AMETHYST AND DIAMOND CLUSTER EARSTUDS, each claw set with an oval mixed-cut amethyst within a surround of brilliant-cut diamonds, to yellow 14ct gold settings, on post fittings, stamped '585' and '14k', with butterfly backs, *length 11mm. £260-300*



204



A GEM SET RING AND EARRING SUITE WITH MATCHED BRACELET, all set with pale lilac-blue gemstones (untested), the ring and earrings set with marquise-cut stones, mounted in 9ct white gold, hallmarked and bearing maker's mark 'DK', the bracelet set with round-cut stones, mounted in yellow metal, *ring size N1/2, earring length 30mm. £300-400*

205

A DIAMOND ETERNITY RING, the band set round with 21 brilliant-cut diamonds, mounted in white precious metal, *total diamond weight approximately 1.7 carats, ring size N. £300-500*



206



**A SAPPHIRE AND DIAMOND BAR BROOCH**, the tapered piercedwork brooch centred with five millegrain collet set oval mixed-cut sapphires, surrounded by single-cut diamonds, mounted in yellow and white precious metal, *brooch length 6.95cm.*

£1000-1500

207



**AN EARLY 20TH CENTURY DIAMOND AND PEARL BROOCH**, set throughout with old-cut and rose-cut diamonds, the central open cluster with small pearl highlights, between pierced decorated panels with central line of pearls (all pearls untested for natural origin), white precious metal mounted, unmarked, *length 68mm.*

£600-800

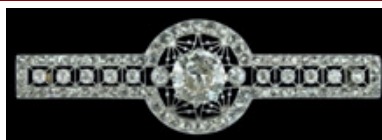
208



**A SAPPHIRE AND DIAMOND BAR BROOCH**, the rectangular bar brooch set with alternating trios of brilliant-cut diamonds and scissor-cut sapphires, to a millegrained border, mounted in white precious metal, *total diamond weight approximately 1.2 carats, brooch length 53mm.*

£600-800

209



**AN EARLY 20TH CENTURY DIAMOND SET BROOCH**, the openwork bar brooch with circular centrepiece around the principal claw set old brilliant-cut diamond, within a line of millegrain collet set brilliant-cut diamonds, to a rose-cut diamond border, mounted in white precious metal, *principal diamond approximately 1.3 carats, brooch length 49mm.*

£1500-2000

210



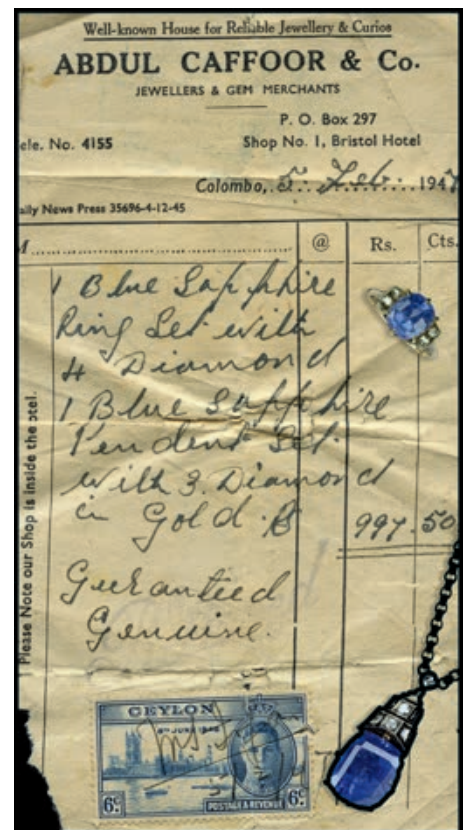
**AN ART DECO SRI LANKAN SAPPHIRE AND DIAMOND PENDANT ON CHAIN**, the cushion-cut sapphire claw set beneath an articulated diamond set pierced mount of stepped design, suspended from a single-stone diamond surmount, gold and silver mounted, on faceted belcher-link back chain, accompanied by a Report from the Gemmological Certification Services, confirming the sapphire is of Sri Lankan (Ceylon) origin, with no indications of heating, *sapphire weight approximately 14 carats, dimensions 13.7mm x 12mm x 9.4mm, length of pendant 3cm*, together with an original purchase receipt (including sapphire and diamond ring in the following lot), from **Abdul Caffoor & Co**, Bristol Hotel, Colombo, Ceylon, dated 5 February 1947. **£4000-6000**

The Report from the GCS is numbered 5776-5897, dated 21.06.2016.

Of Arab descent, the Caffoor family were traders of gemstones from the East who settled in Colombo, Ceylon, the earliest records showing their permanent residence in the city from the 1840s. Noordeen D Hajjar Abdul Caffoor was born in 1876 and so the story goes, after a chance meeting with a Muslim jeweller when aged just 14 who provided him with financial support, he started up his own gems and jewellery business. From 1894 he was trading at the Bristol Hotel building, in Colombo. Well liked and respected for his honesty and integrity in business, he quickly established a good reputation, and was granted special permission to board the ships that called at Colombo harbour enabling him to sell his gems and jewellery to the sailors and travellers disembarking from the ships. During the Royal visit of the Prince and Princess of Wales in 1901, Caffoor was given the particular privilege of exhibiting his pearls, diamonds, rubies, sapphires and art works to the royal couple at the Kandy Pavilion.

Caffoor took part in a series of world exhibitions, winning awards for his stands across the United States and Europe, and increasing his own reputation and that of his homeland. In 1903 he participated in the St Louis Exhibition in the USA, and in 1924 he exhibited at the British Empire Exhibition, held at Wembley where Her Majesty Queen Mary personally visited his pavilion and made purchases. Caffoor built up his own unique collection of precious stones and jewellery, and in 1929 he established a Gem Museum at Church Street, Fort, Colombo. Opened by Sir Herbert Stanley, the Governor of Ceylon, he paid tribute to Caffoor who had also presented a permanent exhibition of Ceylon stones to the Imperial Institute, in South Kensington, London.

Caffoor was also remembered as a great philanthropist, contributing generously to education, social causes and the Muslim religion in Ceylon. After his death in 1949, the then Prime Minister of Ceylon, S W R D Bandaranaike, paid him a glowing tribute: 'I regard him as one of the outstanding Ceylonese gentlemen of his age'.



211

**A SRI LANKAN SAPPHIRE AND DIAMOND RING**, the cushion-cut sapphire claw set between diamond shoulders, each inset with pairs of old-cut diamonds, to gold setting, (shank unmarked), accompanied by a Report from the Gemmological Certification Services confirming the sapphire is of Sri Lankan (Ceylon) origin, with no indications of heating, *sapphire weight approximately 3.2 carats, dimensions approximately 8.3mm x 7.2mm x 5.8mm, ring size H1/2*, together with a **copy** of the original purchase receipt (including the sapphire and diamond pendant in the preceding lot), from **Abdul Caffoor & Co**, Bristol Hotel, Colombo, Ceylon, dated 5 February 1947. **£800-1000**



The Report from the GCS is numbered 5776-5898 and dated 21.06.16.

The original purchase receipt, listing both the sapphire and diamond pendant (offered for sale in the preceding lot) and the sapphire and diamond ring in this lot, will be included with the sale of the pendant. A **copy** of the original receipt will be included with this lot.

212



**AN EDWARDIAN SEED PEARL SET BROOCH**, modelled as a swallow flying through a seed pearl set heart, beneath a similarly seed pearl set foliate bower, mounted in yellow gold, with applied plaque stamped '15ct', brooch length 42.5mm. **£120-180**

213

**A VICTORIAN DIAMOND CLUSTER RING**, the central old brilliant-cut diamond in raised claw setting, within a surround of further old brilliant-cut diamonds (one replaced with modern brilliant), between scrolled and tapered barleytwist shoulders, shank stamped '18ct', total diamond weight approximately 0.85 carats, ring size O. **£400-600**



214



**A ROSE-CUT DIAMOND PANEL RING**, the central line of three rose-cut diamonds vertically set, within a similarly set figure-of-eight surround, mounted in white precious metal, to a yellow precious metal scrolled shank, bearing mark '585' within leaf-shaped outline, for the Netherlands, small gold items, post 1953, ring size M. **£300-500**

215

**A VICTORIAN HALF PEARL AND DIAMOND RING**, set with three graduated half pearls and two old-cut diamonds, with pairs of rose-cut diamond points between, to scrolled gallery and shoulders, mounted in yellow gold, total weight of old-cut diamonds approximately 1 carat, ring size P. **£600-800**



216



**A DIAMOND FIVE STONE RING AND A PEARL FIVE STONE RING**, the first set with five graduated old brilliant-cut diamonds, with pairs of rose-cut diamond points between, claw set to gallery with fleur-de-lys detail and reeded shoulders, mounted in yellow gold, stamped '18' and bearing maker's mark 'D&F', the second ring claw set with five pearls, untested for natural vs. cultured origin, mounted in yellow gold, unmarked, first ring size T, total diamond weight approximately 0.7 carats, second ring size O. **£500-700**



217



A LATE 19<sup>TH</sup>/EARLY 20<sup>TH</sup> CENTURY FRENCH BROOCH WITH DRAGONFLY DETAIL, the circular openwork brooch modelled as a spray of fuchsias, in yellow gold, applied with a sliver and gold dragonfly, with round-cut ruby thorax and rose-cut diamonds set wings, the clasp bearing French eagle's head assay mark, brooch diameter 32.5mm. £400-500

218

TWO EDWARDIAN GOLD SEED PEARL PENDANTS AND A GOLD STAR BROOCH, the first of star design, centred with a round-cut pink paste stone between graduated seed pearls, yellow gold mount stamped '9ct', on later curb and twisted baton-link chain, the second of open scroll design, highlighted with pink stones and seed pearls, yellow gold mount stamped '9ct', on a fine belcher-link chain and the third a star burst brooch set with graduated half seed pearls, with detachable brooch fitting, yellow gold mount stamped '15'.



£200-300

219



A LATE VICTORIAN SEED PEARL SNOWFLAKE BROOCH/PENDANT AND A SEED PEARL BUCKLE, the first set with graduated half seed pearls to a central old brilliant-cut diamond, mounted in yellow gold, stamped '18', the second of oval form set with half seed pearls, yellow gold mount stamped 'SS,15', first brooch diameter 24mm. £200-300

220

AN EARLY 20<sup>TH</sup> CENTURY DIAMOND CLUSTER RING, the flowerhead cluster of claw/collet set old brilliant and single-cut diamonds to yellow gold shank stamped '18', total diamond weight approximately 0.5 carats, ring size Q. £100-200



221



A FIVE STONE DIAMOND RING, the five graduated old brilliant-cut diamonds claw set in yellow and white precious metal, shank stamped '18ct', total diamond weight approximately 1.35 carats, ring size R. £1000-1500

222



**A PAIR OF RUBY SET EARCLIPS, CIRCA 1960s**, of textured domed whorl design, centred with a cluster of round-cut rubies, mounted in yellow precious metal, stamped 'kt18', *clip diameter 19mm*. £400-600

223



**AN 18CT GOLD RUBY, SAPPHIRE AND DIAMOND FLOWER BROOCH**, the larger chrysanthemum set with sapphire stamen with diamond highlights, above wirework petals and with textured curling stem, the second smaller flower head with ruby and diamond stamen and ropetwist wirework petals, on polished stem, both with a diamond set collar below the polished gold bud, with maker's mark 'HGM' for Hans George Mautner, hallmarked for London 1962, *length 5.5cm*. £600-800

224



**A PAIR OF 1960s/70s RUBY AND GOLD EARCLIPS**, the half hoops of overlapping textured leaves highlighted with brilliant-cut diamonds and round-cut rubies, mounted in yellow precious metal, with clip back fittings and later added posts, *length 24mm*. £300-500

225



**A RUBY AND SAPPHIRE WIREWORK BROOCH, 1960s**, modelled as two stylized scrolls each centred with a line of claw set round-cut rubies or sapphires, mounted in yellow precious metal, *brooch length 47.5mm*. £200-300



**AN 18CT TWO COLOUR GOLD CHOKER NECKLACE, BY DAVID THOMAS, 1972**, composed of two connecting bracelets, the larger bracelet set with three oval mixed-cut amethysts and spaced by four smaller similarly cut rock crystal, each stone in upswept textured wirework setting, with hinged connections between, stamped with maker's mark 'DAT' to the clasp, the second bracelet of uniform square hinged panels, with vacant settings, hallmarked for London 1972 and with maker's mark to clasp, *first bracelet length 16.5cm, weight 91.6gm, second length 16.4cm, weight 52.3gm.* **£3000-5000**

**David Thomas** was born in Hampton Hill, Middlesex in 1938. His father was an academic but encouraged his son's ambition to be an artist and transferred David to Twickenham School of Art in 1953 when he was only 15. He made his first piece of jewellery in the same year, and later won a Royal Society of Arts bursary which enabled him to travel in Italy and France. Leaving school in 1958 at a time when there were few British workshops employing modern designers, David moved to Stockholm where he found a job with W A Bolin, the Swedish Crown jewellers and then worked as a silversmith with Sven Arne Gillgren. In 1959 he won a scholarship to the Royal College of Art, earning the title of Royal Scholar by the end of his first year. He began to move away from working in silver, by this time becoming fascinated by gold, a more precious metal which demanded a greater fineness of detail. After leaving the Royal College of Art in 1961, he set up his own studio at Hampton Hill, moving to 4c Old Church Street, Chelsea in 1965. By this time, interest in his work was becoming international, with exhibitions all over the world, including Dusseldorf, Stockholm, Zurich, Amsterdam, a one man show in Australia in 1964 and America, 1967 and exhibiting in the British Pavilion at Expo '70 Japan.

Most of David Thomas' jewellery is made on private commission, designing and creating jewels for his private clients, espousing his belief that jewellery is an 'intense personal art form'. However, in 1972 he put his experience to wider use, when he produced the Atlantis Collection, in association with Prestige Jewellery in London.

Moving in 1985 to new studios at 65, Pimlico Road, David Thomas' jewels today are to be found in the collections of the Worshipful Company of Goldsmiths and De Beers Consolidated Mines.

The choker necklace offered for sale here was a piece privately commissioned by the vendor.



227



**A SEAL SET RING, AN AMETHYST SET FOB SEAL AND A GLASS INTAGLIO FOB SEAL**, the ring inset with a cushion-shaped bloodstone panel, engraved with initials beneath crest, mounted in reeded yellow precious metal to later shank, the 19th century small amethyst fob seal with intaglio engraved crest of an owl, mounted in yellow gold, and a smoky glass seal with engraved intaglio full armorial achievement, (af). £100-200

**228 A COLLECTION OF GENTLEMAN'S DRESS ACCESSORIES**, comprising a pair of 9ct gold oval panel cufflinks with foliate engraved detail, a pair of 9ct gold engine-turned hexagonal panel cufflinks with torpedo terminals, a pair of gold half pearl set collar studs, and two cased dress sets comprising gold collar studs (both lacking cufflinks). £300-400

229



**A CASED SET OF GENTLEMAN'S DRESS BUTTONS**, the set of six circular grey mother o' pearl buttons with gold ropetwist cross thread detail, collet set in yellow gold, stamped '18', in fitted gilt tooled green leather case, interior silk signed 'The Goldsmiths and Silversmiths Company Ltd', together with a similar set of cufflinks, adapted from buttons, the white mother o' pearl in yellow precious metal mounts, later belcher-link chain connections, cased, and seven matched plain mother o' pearl collar studs, some with yellow precious metal mounts. £150-200

230



**A COLLECTION OF FIVE STICK PINS**, the principle example mounted with an oval enamelled portrait panel, circa 1880s, finely painted in the Limoges style to depict the head and shoulders of a young woman in Renaissance costume, her long auburn wavy hair surmounted by a gilt headdress with rose-cut diamond highlights, against a red guilloche enamel ground, the panel mounted to a gold pierced work setting, together with a stick pin mounted with a serpent head terminal (from a Victorian necklace), a gold beaded example, an opal set example and a cornelian coloured cabochon set example; *first: panel dimensions 16mm x 12mm.* £200-300

The first stick pin is painted in the Limoges style, an example of the detail achieved by skilled enamellers working with this technique. The Renaissance revival style became popular with some jewellers from the 1880s, with many of the woman portrayed in such portraits said to be famous actresses.

Limoges enamelling developed in 15th century France and involves using very finely sifted glazes mixed with essential oils - clove oil for the detailed areas and lavender oil for the background and larger areas, resulting in an enamel with a bolder and glossier finish than most other painted enamels. The best known Arts and Crafts designer to use Limoges enamelling to great effect, and probably responsible for encouraging others to do so also, was Charles Ashbee.

This lot has been kindly donated and is being sold on behalf of **Oxfam GB** (Charity No: 612172).

**231 A COLLECTION OF STICK PINS**, of various designs and set with assorted stones including diamonds, garnets, opal, agate, seed pearls, paste, etc. £500-700

232



**A ROYAL PRESENTATION EDWARD VII GEM SET STICK PIN**, cased, the monogram of Edward VII set with old brilliant and rose-cut diamonds, beneath a crown surmount, in a semi fitted purple velvet case, the interior silk signed 'Clark, 20 Old Bond St'. £200-300

---

**233** A LARGE QUANTITY OF DIAMOND AND GEM SET RINGS, mostly modern and mostly 9ct gold mounted, variously set with diamonds, emeralds, rubies, sapphires, amethysts, together with one 9ct gold wedding band, two 9ct gold buckle rings and an 18ct gold three stone diamond ring. (53) £800-1000

---

**234** A LARGE QUANTITY OF MODERN GEMSET DRESS RINGS, mostly 9ct gold mounted, variously set with gemstones including lapis lazuli, opal, amethyst, citrine, sapphire, ruby, pearl, etc (total of 50 rings), together with a quantity of modern jewellery boxes. £600-800

---

**235** A QUANTITY OF PENDANTS/NECKLACES, including a late Victorian 9ct gold and garnet openwork pendant on chain, two 9ct gold and diamond pendants on chains, a jade and diamond pendant on chain, a further jade pendant, (*all jade untested for treatments*), a 9ct gold circular piercedwork pendant, two cameo pendant/brooches and further assorted gem set necklaces and pendants. £400-600

---

**236** A QUANTITY OF EARRINGS AND EARSTUDS, mostly modern, including various 9ct gold hoop examples, scallop shell, leaf designs, etc., together with a pair of lapis lazuli pendant earrings, four pairs of gem set earstuds, and a 9ct gold butterfly brooch, weighable gold approximately 26gm. £250-350

---

**237** A QUANTITY OF MODERN 9CT GOLD JEWELLERY, comprising a polished and textured bead necklace, a two colour ropetwist chain necklace and matching bracelet, a ropetwist chain necklace and matching bracelet, a spiral link chain necklace, two oval lockets on chains, a curb-link chain necklace and matching bracelet, a fine curb-link chain necklace, a three colour gold gate-link bracelet, a further gate-link bracelet and a hinged bangle, *total weight approximately 64gm.* £500-600

---

**238** A LARGE QUANTITY OF ASSORTED COSTUME JEWELLERY, to include rings, brooches, pendants, necklaces, bangles, etc.

This lot is being sold on behalf of the charity **Rennie Grove Hospice Care** (Charity No 1140386). These items have been kindly donated and are being offered for sale at NO RESERVE.

---

**239** A LARGE QUANTITY OF ASSORTED COSTUME JEWELLERY, to include brooches, necklaces, rings, pendants, watches etc.

This lot is being sold on behalf of the charity **Oxfam GB** (Charity No: 612172). These items have been kindly donated and are being offered for sale at NO RESERVE.

---

**240** A LARGE QUANTITY OF ASSORTED COSTUME JEWELLERY, to include costume pieces by Ken Lane, and miscellaneous bead necklaces, pendants, brooches, rings, earrings, watches etc.

This lot is being sold on behalf of the UK charity **PACE**, an Aylesbury based charity and school providing intensive input to children with motor disorders such as Cerebral Palsy. (Charity No 1011133). These items have been kindly donated and are being offered for sale at NO RESERVE.

241



A SMALL GROUP OF JEWELLERY INCLUDING A PAIR OF PIQUEWORK TORTOISESHELL EARRINGS AND A FUMSUP GOOD LUCK CHARM, the tortoiseshell earrings with elongated drops beneath spherical surmounts, with inlaid piquework, to later hook fittings, the FUMSUP charm with wooden head and white metal body, together with a set of five mother o' pearl and gilt waistcoat buttons, a further similar button and two collar studs, and a pair of white metal filigree drop earepandants. £150-200

The FUMSUP charm was a good luck charm popular through the end of the late 19th century, reaching a peak during WWI. It is modelled as an infant with 'FUMSUP' across its torso. Its thumbs are up and its arms move to touch its wooden head - 'touching wood' - both of which are symbols of good luck. It has wings at its ankles to speed the good luck onwards.

242

A SMALL COLLECTION OF ANTIQUE FOBS AND PENDANTS, comprising a small gold mounted cornelian inset fob seal, bearing initials, a gold watch key with plumed feather decoration, a small silver gilt locket, a gilt heart-shaped pendant, a hollow spherical fob and a further small gilt metal fob seal, all suspended on foliate split ring, to a short section of hollow curb-link Albert chain, (unmarked), with swivel terminal. £300-500



243



A SMALL COLLECTION OF ASSORTED JEWELLERY, including a pair of jade pierced carved circular earclips, mounted in yellow gold, stamped '14k' and a pierced carved jade pendant depicting a bat amid foliage, (all jade untested for treatments or enhancement), together with a Scottish 'pebble' brooch, an egg-shaped powder compact pendant decorated with pink guilloche enamel, a large bloodstone agate pebble pendant, a pair of rose quartz earepandants, etc. £200-300

244

A COLLECTION OF BEAD NECKLACES, comprising a necklace of uniform spherical *Corallium Rubrum* coral beads, to a reeded spherical yellow precious metal clasp, stamped '9ct', a necklace of uniform spherical blue lace agate beads, and two aventurine quartz bead necklaces together with a section of gold curb-link chain, links hallmarked, coral bead necklace length 69cm, gold chain length 30cm. £300-400

Please note that coral is covered by CITES legislation and may be subject to export and other trade restrictions.



245



A DIAMOND LINE BRACELET, mounted in 18ct white gold, and set throughout with brilliant-cut diamonds, each in four claw setting, hallmarked to clasp, and stamped '646', total diamond weight approximately 6.50 carats, length 18.5cm.

£3500-4000

246



A GROUP OF THREE GEM SET PENDANTS, comprising a linear drop pendant set with three uniform brilliant-cut diamonds, mounted in 18ct white gold, bearing maker's mark 'DOM' and European convention marks, together with another pendant of similar design set with three round-cut emeralds and mounted in 9ct yellow gold, hallmarked and bearing maker's mark 'STJ', and another pendant set with a flowerhead cluster of brilliant-cut diamonds, mounted in 9ct white gold, bearing maker's mark 'SG' and European convention marks, first pendant has total diamond weight of approximately 0.5 carats, length 17mm.

£150-200

247



A DIAMOND SET BANGLE, the hinged knifed-edge bangle spaced to the front with seven raised claw set old brilliant-cut diamonds, mounted in yellow precious metal, total diamond weight approximately 1.90 carats, bangle internal diameter 5.5cm.

£800-1200

248

A SMALL COLLECTION OF ANTIQUE JEWELLERY, including a single stone diamond ring, the old brilliant-cut diamonds millegrain collet set, a red stone set trefoil ring, the shank stamped '9ct', an irregular coral bead necklace (broken) and an Edwardian garnet set pendant, stamped '9ct', diamond approximately 0.25 carats, ring size O.

£300-500



249



**A LATE 19TH / EARLY 20TH CENTURY EMERALD AND DIAMOND OVAL BROOCH**, the pierced decorated design centred with a step-cut emerald, within a surround of rose-cut diamonds, the brooch set throughout with further old-cut and rose-cut diamonds, within an outer border of emeralds, the setting gold and silver mounted, with brooch and pendant fittings, *length 4.8cm.* £2000-3000

250



**A DIAMOND HALF HOOP RING**, the seven uniform brilliant-cut diamonds channel set in platinum, hallmarked for London, 2005, with maker's mark 'EF' in conjoined lozenges, *total diamond weight approximately 0.84 carats, ring size N.* £500-700

251



**A THREE STONE DIAMOND RING**, the three graduated brilliant-cut diamonds claw set to plain white precious metal mount, cased, *total diamond weight approximately 2.85 carats, ring size K.* £2000-3000

252

**A COLLECTION OF SEVEN BROOCHES AND A STICKPIN**, the stickpin set with a seed pearl and a round-cut demantoid garnet, the brooches of assorted design and variously set with moonstone, peridot, seed pearls, turquoise, goldstone, purple paste and shell cameo. £300-400

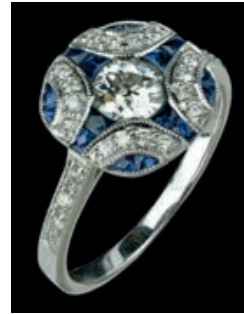
253



A SINGLE STONE DIAMOND RING, the brilliant-cut diamond claw set between tapered shoulders with foliate detail with small single-cut diamond highlights, mounted in yellow and white precious metal, shank stamped '18ct', 'platinum' and signed 'Cupid', diamond approximately 0.8 carats, ring size P1/2. £1000-1500

254

A DIAMOND AND SAPPHIRE RING, the cushion-shaped panel centred with a brilliant-cut diamond, with curved bands of small brilliant-cut diamonds to each corner, the remainder of the panel pave set with fancy-cut sapphires, between brilliant-cut diamond set shoulders, mounted in white precious metal, principal diamond approximately 0.5 carats, ring size N. £900-1000



255



AN OCTAGONAL EMERALD AND DIAMOND CLUSTER RING, the brilliant-cut diamond collet set within an octagonal surround of two rows of channel set fancy-cut emeralds, between brilliant-cut diamond set shoulders, mounted in yellow precious metal, principal diamond approximately 0.5 carats, ring size N. £900-1000

256

A DIAMOND CLUSTER RING, the central old brilliant-cut diamond claw set within a frilled surround of smaller old brilliant-cut diamonds, between tapered shoulder, white precious metal mounted, shank stamped '18ct' and 'ET', principal diamond approximately 0.8 carats, ring size N1/2. £500-700





**AN EARLY 20TH CENTURY BLACK OPAL AND DIAMOND BROOCH**, the quarter-segment-shaped flat cabochon black opal millegrain collet set within a spaced surround of individually millegain set old brilliant-cut diamonds, to an outer hoop surround of similarly set single-cut diamonds, mounted in yellow and white precious metal, *opal measures 19mm high x 22mm wide, brooch width 31.5mm.*

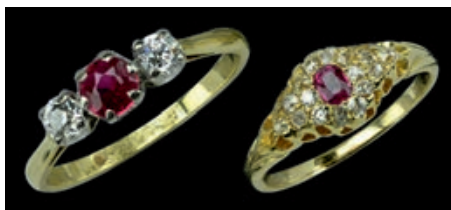
£3000-5000

258



**A LATE 19TH CENTURY ENAMEL PENDANT**, the oval painted enamel panel depicting two cherubs in coloured robes amidst clouds, one painting a canvas, within a black and white enamel garland detailed surround with rose-cut diamond and ruby accents, within an outer radiating border of graduated half seed pearls and mixed-cut rubies, with ruby set fleur-de-lys detail to the cardinal points, the whole suspended from a tied ribbon bow surmount set with alternating half seed pearls and mixed-cut rubies, on a later belcher-link chain, *total pendant length 5.3cm.* £500-700

259



**TWO RUBY SET RINGS**, the first a gold mounted ruby and diamond cluster ring, in open claw setting, centred with an oval mixed-cut ruby and bordered by old-cut, cushion-cut and brilliant-cut diamonds, shank size reduced, (ruby untested) and a three stone ruby and diamond ring, claw set, in 18ct gold setting, *ring sizes 1 1/2 and O respectively.* £300-400

260

**TWO DIAMOND RINGS**, the first claw set with three graduated brilliant-cut diamonds, yellow gold shank stamped '18ct, plat', the second claw set with five graduated brilliant-cut diamonds, to yellow gold shank stamped '18ct', *first: total diamond weight approximately 0.4 carats, second: total diamond weight approximately 0.65 carats, both rings size K.* £300-400



261



**A THREE STONE DIAMOND RING**, the three brilliant-cut diamonds in claw/split collet settings, mounted in white precious metal to an 18ct yellow gold shank, hallmarked for Birmingham, 1981, *total diamond weight approximately 0.65 carats, ring size K.* £300-400

262

A DIAMOND AND SAPPHIRE BALLERINA SET RING, the central round-cut sapphire in raised claw set within a cluster surround of brilliant-cut diamonds, to an outer crossover style undulating surround of channel set baguette-cut diamonds, mounted in yellow precious metal, shank stamped '750' and '18k', ring size N. £500-700



263



A DIAMOND SET HALF HOOP RING, the front of the ring set with a line of baguette-cut diamonds, between raised borders of claw set brilliants, to channel set baguette-cut diamond set gallery, mounted in 9ct white gold, shank bearing partial hallmark and maker's mark 'TJC', ring size L1/2. £250-300

264

A DIAMOND FLOWERHEAD CLUSTER RING, the central raised claw set brilliant-cut diamond within a flowerhead cluster surround of further brilliant-cut diamonds, mounted in white precious metal, to a yellow precious metal shank stamped '18', total diamond weight approximately 1.25 carats, ring size N. £400-600



265



A RUBY AND DIAMOND FIVE STONE RING, the graduated alternating round-cut rubies and old brilliant-cut diamonds claw set with pairs of rose-cut diamond points between, one lacking, to scrolled gallery, mounted in yellow gold, unmarked, old brilliant-cut diamonds approximately 0.4 carats in total, ring size S. £400-600

266

AN 18CT GOLD RUBY AND DIAMOND CLUSTER RING, the oval mixed-cut ruby claw set and bordered by 12 brilliant-cut diamonds, shank fully hallmarked, with Report from the Gemmological Certification Services confirming the ruby has no indications of heat treatment, ruby weight approximately 2.70 carats, total diamond weight approximately 0.96 carat, ring size O1/2. £2000-2500

The ring is accompanied by a GCS Report No. 5776 5899, dated 21.06.16, confirming natural corundum, of pink red colour, approximate weight 2.7ct, dimensions 8.3mm x 7.1mm x 4.4mm, with no indications of heating.



267

A PAIR OF SAPPHIRE, MOONSTONE AND DIAMOND PENDANT EARRINGS, the drops composed of a quatrefoil hoop of small single-cut diamonds, within a outer hoop of round-cut sapphires, with cabochon moonstone accents between, suspended from a similar smaller surmount, to stud fittings, earpendant length 7.2cm. £350-450



268



A PAIR OF AQUAMARINE AND DIAMOND EARRINGS, each centred with a step-cut rectangular aquamarine, within a border of brilliant-cut diamonds, beneath a single diamond set surmount, all collet set, white precious metal mounted, on post fittings, with circular push-stud backs stamped '750' '18k', total diamond weight approximately 1.80 carats, length 20.05cm. £1500-1700

269



A SINGLE STONE DIAMOND RING, the old brilliant-cut diamond, weighing 6.08 carats, in eight double-claw setting, mounted in white precious metal, shank stamped '18ct', ring size M. £18000-22000

270



**A KUNZITE AND DIAMOND PENDANT**, the cushion-cut pink stone in four twin-claw setting, suspended from a two row platinum surmount, set with brilliant-cut diamonds, with lasered hallmark to the mount, maker's mark PW, on fancy curb-link platinum chain, *approximate dimensions of kunzite length 23.5mm x width 21mm x depth 14mm, chain length 45cm.*

£1000-1500

271



**A SINGLE STONE DIAMOND RING**, the brilliant-cut diamond in simple eight claw setting, to plain 18ct yellow gold shank with tapered shoulders, shank hallmarked for London, 1988, *diamond weight approximately 0.5 carats, ring size L1/2.*

£300-400

272

**A SINGLE STONE DIAMOND RING**, the brilliant-cut diamond in raised crossover four claw setting between tapered shoulders, mounted in 18ct white gold, bearing European convention marks and stamped '1.50 P 13', *diamond weight approximately 1.50 carats, ring size N.* £1000-1500



273

A JADE RING AND EARRINGS, the ring composed of oval cabochon jade claw set between tapered shoulders, mounted in yellow precious metal, stamped '14k, 585', the earrings set with pear-shaped jades, in yellow precious metal mounts, with screw back fittings, stamped '18k', (all jade is untested for treatment or enhancement), ring size N. £300-400



274



A DIAMOND PANEL BROOCH, of slightly bowed form, comprising five vertical rows of old-cut diamonds within stepped design, millegrain edged, white precious metal mounted, unmarked, with later added pin fitting, possibly adapted from a ring, total diamond weight approximately 2.9 carats, length 2.2cm. £500-700

275

TWO DIAMOND SET BAR BROOCHES, the first with wavy polished bar centred with three millegrain collet set brilliant-cut diamonds, the outer two within concentric hoop surrounds, mounted in yellow gold, the reverse stamped '15ct', the later pin hallmarked for 14ct gold; the second of tapered polished form, centred with a claw set brilliant-cut diamond, mounted in two colour precious metal, unmarked, first: total diamond weight approximately 0.36 carats, length 6.3cm; second: diamond approximately 0.4 carats, length 5.25cm. £400-600



276



AN 18CT WHITE GOLD DIAMOND SPRAY BROOCH, of scrolling design with wirework detail, set throughout with brilliant-cut and single-cut diamonds, import mark for Birmingham, 1960, length 5cm. £300-400

277

A 1950s-1960s DIAMOND SET FLORAL SPRAY BROOCH, the central flowerhead composed of old brilliant-cut diamond set curling petals around central cluster of claw set old brilliants, to three stems set with graduated brilliant and baguette-cut diamonds, mounted in white precious metal with double pin clip fitting, brooch length 7cm. £2000-3000





278



**A JADE AND DIAMOND BROOCH**, the pierced carved rectangular jade panel depicting a flower amid foliage, claw set between geometric shoulders millegrain set with brilliant-cut diamonds, mounted in white precious metal, (jade untested for treatments or enhancement), *brooch length 56mm.* £500-700

279



**TWO THREE STONE DIAMOND RINGS AND A DIAMOND HALF HOOP RING**, the first claw set with three graduated brilliant-cut diamonds, shank stamped '18ct', the second similarly set to crossover mount, shank hallmarked for 18ct gold, the third set to the front with a line of nine single-cut diamonds, to scroll engraved gallery, white precious metal mount stamped '18ct&pt' and 'EVS&O', *first total diamond weight approximately 0.65 carats, ring size M1/2, second total diamond weight approximately 0.3 carats, ring size L, third ring size Q.* £400-600

280

**A PAIR OF LATE 19TH CENTURY DIAMOND AND PEARL EARPENDANTS**, gold and silver mounted and millegrain edged throughout, set with old-cut diamond surmount, and rose-cut diamonds vertically below, terminating in an hexagonal drop, outlined with further rose-cuts and centred with a pearl (untested for natural v cultured origin), with later hinge and post fittings, *length 3.5cm.* £300-500



281



**A DIAMOND SET BAR BROOCH**, the plain square section bar with claw set old brilliant-cut diamond terminals and centred with three similarly claw set graduated old brilliant-cut diamonds, mounted in white precious metal, *total diamond weight approximately 1.9 carats, bar brooch length 5.1cm.* £400-600

282



**A JADE AND DIAMOND RING**, FIRST HALF 20TH CENTURY, the oval jade cabochon claw set between bifurcated shoulder millegrain set with old single-cut diamonds, mounted in white precious metal, *jade untested for treatment or enhancement, in a gilt tooled blue leather case, signed 'Mappin and Webb Ltd', jade cabochon measures 18.5mm x 14.5mm, ring size T.* £1000-1500

283



**A PAIR OF DIAMOND EARRINGS**, the drops composed of pear-shaped clusters of small brilliant-cut diamonds, mounted in white precious metal, *length 33mm*. £300-400

284



**A SINGLE STONE DIAMOND RING AND A MATCHING PLATINUM WEDDING BAND**, the brilliant-cut diamond in simple four claw setting between tapered shoulders, mounted in platinum, shank hallmarked for Birmingham, 2008, and bearing maker's mark 'CH', together with a platinum wedding band, bearing European convention marks and maker's mark 'DOM', *diamond approximately 0.7 carats, rings size L1/2 and K1/2 respectively*. £850-1000

Accompanied by a small Diamond Consultation report, no: 2761258637, dated 15th November 2007, from the the European Gemmological Laboratory. This gives the stone weight as 0.7 carats, the clarity as VS2 and the colour as H.

285



**A THREE STONE DIAMOND RING**, the central emerald-cut stone within four claw setting, between two baguette-cut stones in channel mount, to a plain polished platinum shank, hallmarked, with maker's mark HM, *total diamond weight approximately 0.60 carats, ring size M*. £200-300

286



**A DIAMOND ETERNITY BAND**, channel set with 25 princess-cut diamonds, and one later added baguette-cut diamond, mounted in white precious metal, unmarked and untested, *total diamond weight approximately 1 carat, ring size H1/2*. £400-500

287



**A DIAMOND SET RING**, set with a line of claw set alternating singles and pairs of brilliant-cut diamonds, to a basket mount in white precious metal, shank stamped '18k' and '750' and '106', *total diamond weight approximately 1 carat, ring size N*. £200-300



**AN 18CT GOLD AND DIAMOND SUITE**, of wriggle design, the matched suite comprising a diamond line necklace by maker CLM, stamped '750' and a bracelet and pair of earpendants of confirming design, by Kutchinsky; each piece claw set throughout with brilliant-cut diamonds, the necklace and bracelet set with uniform diamonds, the earpendants of slightly graduating diamonds, with hinged clip and post fittings, the necklace stamped with maker's mark 'CLM' (the Moussaieff workshop mark in Geneva), the bracelet stamped with Kutchinsky maker's mark, and both earrings with stamped 'Kutchinsky', necklace length approximately 47cm, bracelet length approximately 21cm, earrings length approximately 8cm, with soft black leather retailers' case by Moussaieff Jewellers. £6000-8000



**289 A SMALL GROUP OF JEWELLERY**, comprising five gem set rings including two diamond set rings, a ruby and diamond ring, a Victorian garnet and half pearl ring and an 18ct gold locket seal ring, together with a curb-link chain bracelet, a belcher-link chain necklace, suspending a hinged locket pendant, a citrine set bar brooch, a small seed pearl set bar brooch and an aeroplane tiepin. £500-700

290



A CHINESE GOLD FILIGREE AND CARVED TORTOISESHELL PANEL BRACELET, IN IVORY FITTED BOX, LATE QING DYNASTY, late 19th / early 20th century, the three graduated oval deeply carved tortoiseshell panels depicting figural landscape scenes, including pagodas and trees, animals and figures eating, doing calligraphy, playing instruments and performing a dragon dance, the panels in burr detailed link mounts, with shaped filigree links between, each modelled as a phoenix, to filigree clasp, the two outer panels modelled as coiled serpents, the clasp stamped with Chinese character marks, in original fitted deep pink velvet lined ivory case with three carved cartouches to the lid depicting Chinese figural landscape scenes, bracelet length 19cm. £1500-2000

Please note that tortoiseshell is covered by CITES regulations and may be subject to export and other trade restrictions.

291



A CHINESE GOLD FILIGREE AND CARVED HORNBILL PANEL BRACELET, IN IVORY FITTED BOX, LATE QING DYNASTY, late 19th / early 20th century, the three graduated oval deeply carved pale hornbill panels depicting floral motifs, in burr detailed mounts, with shaped filigree links between, each modelled as a phoenix, to filigree clasp, the two outer panels modelled as coiled serpents, with stamped Chinese character marks to the clasp, (hornbill untested), in original fitted deep pink velvet lined ivory case with three carved cartouches to the lid depicting Chinese figural landscape scenes, bracelet length 18cm. £1500-2000

Hornbills are a family of large birds native to the Malay Peninsula, Sumatra and Borneo. Many of the hornbill species have 'casques' (decorative growths on the upper mandible of its bill). In most cases, the casque has a spongy structure, but in the **Helmeted Hornbill** (*Rhinoplax vigil*), the casque is of solid keratin. The casques of the young male birds are yellowish or golden in colour, with the exterior stained bright red by an oily secretion from the bird. The casques were used to carve belt buckles, bracelets, combs, pendants, plumes holders for hats, snuff bottles, temple vases, etc, and have been known as 'Golden jade' and 'Hornbill ivory'. After the middle of the 19th century, much of it was fashioned in Canton, chiefly for sale in the West.

Please note that hornbill is covered by CITES legislation and is subject to export and other trade restrictions.

292



A CHINESE GOLD FILIGREE PANEL BRACELET, IN IVORY FITTED BOX, LATE QING DYNASTY, late 19th / early 20th century, the five oval filigree panel links alternately modelled as a phoenix or a coiled serpent amidst foliage, with stamped Chinese character marks to the clasp, in original fitted deep pink velvet lined ivory case with three carved cartouches to the lid depicting Chinese figural landscape scenes, bracelet length 18cm. £1000-1500



# DIAMONDS

Diamonds are assessed according to the four Cs:

## Carat weight

1 carat equals 0.2 grams.

## Cut

The quality of a cut is assessed in terms of its proportions, symmetry and polish.

## Colour

Unless regarded as a 'fancy' coloured diamonds, all diamonds are graded on their lack of colour. The gradings runs as follows:

GIA	CIBJO	Traditional
D	Exceptional White + (EW+)	Finest White
E	Exceptional White (EW)	Finest White
F	Rare White + (RW+)	Fine White
G	Rare White (RW)	Fine White
H	White (W)	White
I	Slightly Tinted White (STW)	Commercial White
J	Slightly Tinted White (STW)	Top Silver Cape
K	Tinted White (TW)	Top Silver Cape
L	Tinted White (TW)	Silver Cape
M-Z	Tinted Colour (TC)	Cape
Fancy	Fancy Colour	

## Clarity

Diamonds are graded on their freedom from inclusions (within the stone) and blemishes (found on the surface of the stone). They are assessed using 10x magnification, and are graded as follows:

GIA	CIBJO	Description
Flawless (FL)	Loupe Clean (LC)	Shows no inclusions or blemishes
Internally Flawless (IF)	Loupe Clean (LC)	Shows no inclusions and only insignificant blemishes
Very Very Slightly Included (VVS1/2)	Very Very Slightly Included (VVS1-2)	Contains minute inclusions which are very difficult for an experienced grader to see with 10x magnification
Very Slightly Included (VS1-2)	Very Slightly Included (VS1-2)	Contains very small inclusions that are difficult to see with 10x magnification
Slightly Included (SI1-2)	Slightly Included (SI1-2)	Contains inclusions that are easily visible with 10x magnification
Imperfect/Included (I1-3)	Pique (P1-3)	Contains inclusions that are obvious with 10x magnification and can often be seen with the naked eye; durability may be affected

Please note the four Cs of a diamond cannot be fully assessed whilst the stone is mounted. The approximate gradings provided in the condition reports are estimations, made by the specialists whilst the stones were mounted and are for guidance only. If a stone has been unmounted and assessed in a gemmological laboratory, this will be noted in the cataloguing/condition report.



**Commission Form – Jewellery 6 September 2016**

Please bid on my behalf at the above sale for the following Lot(s) up to the price(s) mentioned below. These bids are to be executed as cheaply as is permitted by other bids or any reserve. I understand that in the case of a successful bid, a premium of 20 per cent (plus VAT if resident in, or posted to within, the European Union) will be payable by me on the hammer price of all lots.

**Please ensure your bids comply with the steps outlined below:-**

- Up to £100 by £5
- £100 to £200 by £10
- £200 to £500 by £20
- £500 to £1,000 by £50
- £1,000 to £2,000 by £100
- £2,000 to £5,000 by £200
- £5,000 to £10,000 by £500
- £10,000 to £20,000 by £1,000
- £20,000 to £50,000 by £2,000
- £50,000 to £100,000 by £5,000
- Over £100,000 by £10,000

Bids of unusual amounts **will be rounded down** to the bid step below and will **not** take precedence over a similar bid unless received first. All absentee bids will be executed in the name of ‘Wood’.

**NOTE:** All bids placed other than via our website should be received by 16:00 on the day prior to the sale. Although we will endeavour to execute any late bids, DNW cannot accept responsibility for bids received after that time. It is strongly advised that you use our online **Advance Bidding Facility**. If you have a valid email address bids may be entered, and amended or cancelled, online at [www.dnw.co.uk](http://www.dnw.co.uk) right up until a lot is offered. You will receive a confirmatory email for all bids and amendments. Bids posted or faxed to our office using this form will now be entered by our staff into the system using exactly this facility to which our clients now have access.

**There is, therefore, no better way of ensuring the accuracy of your advance bids than to place them yourself online.**

I confirm that I have read and agree to abide by the Terms and Conditions of Sale printed in the catalogue.

Signed \_\_\_\_\_

Name (Block Capitals) \_\_\_\_\_ Client Code \_\_\_\_\_

Address \_\_\_\_\_

Tel: \_\_\_\_\_ E-mail \_\_\_\_\_

If successful, I wish to pay for my purchases by (please indicate):

- Cash
- Cheque
- Credit/Debit Card (see below)
- Bank Transfer
- Other (please give details) \_\_\_\_\_

**Please note that all payments for purchases by credit card are subject to a 2 percent surcharge on the total invoice price. All payments to be made in pounds sterling.**

If successful, I wish to pay for my purchases by (please indicate):

- Master Card
- Visa
- Amex
- Debit card (no surcharge) Issue No

Name (as shown on card) \_\_\_\_\_

Card no. \_\_\_\_\_ Start Date  /  Expiry Date  /

Your bids may be place overleaf







## IMPORTANT INFORMATION FOR BUYERS

### Absentee Bids

It is recommended that absentee bids are placed using our online advance bidding facility, which is available on our website at [www.dnw.co.uk](http://www.dnw.co.uk). Bids placed in this way cannot be seen by others and do not go live until the actual moment that the lot in question is being offered for sale. All bids can be easily altered or cancelled by the bidder prior to this point. An automated confirmatory email will be sent confirming all bids and alterations

Anyone with a valid email address can easily register to bid online.

There is no additional charge for online bidding and it is not necessary to pre-register a payment card in order to do so.

Whilst we are still happy to execute all bids submitted in writing or by phone, fax, etc., it should be noted that bids left with us will be entered at our offices using the same bidding facility to which all our clients have access. There is, therefore, no better way of ensuring the accuracy of your bids than to execute them yourself online.

**Whilst online bids can be placed up until the moment a lot is offered for sale, all bids made to the office must be confirmed in writing, by fax or e-mail and should be received by 18:00 on the day before the auction. Although we will endeavour to execute late bids, Dix Noonan Webb Ltd cannot accept responsibility for any bids received on the day of the auction itself.**

### Commission Form

Further advice to bidders and purchasers may be found on the commission form included with this catalogue. Please use this form when sending bids to us by post or fax.

### Buyers' Premium

**A buyers' premium of 20% on the hammer price** (plus VAT if resident in, or lots are delivered within, the European Union) **is payable by the buyer on all lots.**

### Pre-sale Estimates

The pre-sale estimates are intended as a guide for prospective purchasers. Any bid between the listed figures would, in our opinion, offer a fair chance of success. However all lots, depending on the degree of competition, can realise prices either above or below the listed estimates.

**All lots are automatically reserved at the bid step which reflects 80% of the lower estimate, unless otherwise instructed by the buyer.**

### Methods of Payment

**All payments must be made in pounds sterling.** Payment may be made by transfer direct to Dix Noonan Webb's account at:

Lloyds TSB

Piccadilly London Branch

39 Piccadilly

London W1J 0AA

Sort Code: 30-96-64

Account No: 00622865

Swift Code: LOYDGB2L

IBAN: GB70LOYD30966400622865

BIC: LOYDGB21085

Please include your name, account number and auction date with the instructions to the bank. Alternative methods of payment which will enable immediate clearance of purchases include cash, bankers drafts, credit cards (Master Card, Visa and American Express) and debit cards. Although personal and company cheques are accepted, buyers are advised that property will not be released until such cheques have cleared.

**Please note that we will not accept cash payments in excess of £5,000 (five thousand pounds) in settlement for purchases made at any one auction.**

Purchases will be despatched as soon as possible upon receipt of your written despatch instructions and full payment in pounds sterling for the lots you have bought. Carriage will be at the buyer's expense. Estimates and advice on all methods of despatch can be provided upon request.

**All credit card payments are subject to an additional charge of 2 per cent.**

Insurance cover will be arranged unless otherwise specified and will be added to the carriage charge for non-UK deliveries.

### Clearance of Purchases

Buyers who have not established a credit arrangement with Dix Noonan Webb will be asked to pay for their purchases in pounds sterling when they wish to take possession of them. It is regretted that Dix Noonan Webb cannot take banker's references over the telephone at the time of clearance and that buyers cannot take possession of their purchases until cheques are cleared.

If buyers wish to pay for their purchases by cheque they are urged to arrange clearance of their cheques well in advance of the sale by supplying appropriate banker's references.

Lots will only be released to the purchaser, or his or her authorised representative, if full payment in pounds sterling has been received and cleared by Dix Noonan Webb, together with settlement of any charges due.

## CONDITIONS OF BUSINESS

### Conditions mainly concerning Buyers

#### 1 The buyer

The highest bidder shall be the buyer at the 'hammer price' and any dispute shall be settled at the auctioneer's absolute discretion. Every bidder shall be deemed to act as principal unless there is in force a written acknowledgement by Dix Noonan Webb that he acts as agent on behalf of a named principal.

#### 2 Minimum increment

The auctioneer shall have the right to refuse any bid which does not exceed the previous bid by at least 5 percent or by such other proportion as the auctioneer shall in his absolute discretion direct.

#### 3 The premium

The buyer shall pay to Dix Noonan Webb a premium on the 'hammer price' in accordance with the percentages set out in paragraph 4 above and agrees that Dix Noonan Webb, when acting as agent for the seller, may also receive commission from the seller in accordance with Condition 15.

#### 4 Value Added Tax (VAT)

The buyers' premium is subject to the current rate of Value Added Tax if the purchaser is resident in the European Union.

**Lots marked 'x' are subject to importation duty of 5% on the hammer price unless re-exported outside the EU.**

#### 5 Payment

Immediately a lot is sold the buyer shall:

(a) give to Dix Noonan Webb his or her name and address and, if so requested, proof of identity; and

(b) pay to Dix Noonan Webb the 'total amount due' in pounds sterling (unless credit terms have been agreed with Dix Noonan Webb before the auction). Please note that we will not accept cash payments in excess of £5,000 (five thousand pounds) in settlement for purchases made at any one auction.

6 Dix Noonan Webb may, at its absolute discretion, agree credit terms with the buyer before an auction under which the buyer will be entitled to take possession of lots purchased up to an agreed amount in value in advance of payment by a determined future date of the 'total amount due'.

7 Any payments by a buyer to Dix Noonan Webb may be applied by Dix Noonan Webb towards any sums owing from that buyer to Dix Noonan Webb on any account whatever, without regard to any directions of the buyer, his or her agent, whether expressed or implied.

#### 8 Collection of purchases

The ownership of the lot(s) purchased shall not pass to the buyer until he or she has made payment in full to Dix Noonan Webb of the 'total amount due' in pounds sterling.

9 (a) The buyer shall at his or her own expense take away the lot(s) purchased not later than 5 working days after the day of the auction but (unless credit terms have been agreed in accordance with Condition 7) not before payment to Dix Noonan Webb of the 'total amount due'.

(b) The buyer shall be responsible for any removal, storage and insurance charges on any lot not taken away within 5 working days after the day of the auction.

(c) The packing and handling of purchased lots by Dix Noonan Webb staff is undertaken solely as a courtesy to clients and, in the case of fragile articles, will be undertaken only at Dix Noonan Webb's discretion. In no event will Dix Noonan Webb be liable for damage to glass or frames, regardless of the cause.

#### 10 Buyers' responsibilities for lots purchased

The buyer will be responsible for loss or damage to lots purchased from the time of collection or the expiry of 5 working days after the day of the auction, whichever is the sooner. Neither Dix Noonan Webb nor its servants or agents shall thereafter be responsible for any loss or damage of any kind, whether caused by negligence or otherwise, while any lot is in its custody or under its control.

#### 11 Remedies for non-payment or failure to collect purchase

If any lot is not paid for in full and taken away in accordance with Conditions 6 and 10, or if there is any other breach of either of those Conditions, Dix Noonan Webb as agent of the seller shall, at its absolute discretion and without prejudice to any other rights it may have, be entitled to exercise one or more of the following rights and remedies:

(a) to proceed against the buyer for damages for breach of contract.

(b) to rescind the sale of that or any other lots sold to the defaulting buyer at the same or any other auction.

(c) to re-sell the lot or cause it to be re-sold by public auction or private sale and the defaulting buyer shall pay to Dix Noonan Webb any resulting deficiency in the 'total amount due' (after deduction of any part payment and addition of re-sale costs) and any surplus shall belong to the seller.

(d) to remove, store and insure the lot at the expense of the defaulting buyer and, in the case of storage, either at Dix Noonan Webb premises or elsewhere.

(e) to charge interest at a rate not exceeding 2 percent per month on the 'total amount due' to the extent it remains unpaid for more than 5 working days after the day of the auction.

(f) to retain that or any other lot sold to the same buyer at the sale or any other auction and release it only after payment of the 'total amount due'.

(g) to reject or ignore any bids made by or on behalf of the defaulting buyer at any future auctions or obtaining a deposit before accepting any bids in future.

(h) to apply any proceeds of sale then due or at any time thereafter becoming due to the defaulting buyer towards settlement of the 'total amount due' and to exercise a lien on any property of the defaulting buyer which is in Dix Noonan Webb's possession for any purpose.

#### 12 Liability of Dix Noonan Webb and sellers

(a) Goods auctioned are usually of some age. All goods are sold with all faults and imperfections and errors of description. Illustrations in catalogues are for identification only. Buyers should satisfy themselves prior to the sale as to the condition of each lot and should exercise and rely on their own judgement as to whether the lot accords with its description. Subject to the obligations accepted by Dix Noonan Webb under this Condition, none of the seller, Dix Noonan Webb, its servants or agents is responsible for errors of descriptions or for the genuineness or authenticity of any lot. No warranty whatever is given by Dix Noonan Webb, its servants or agents, or any seller to any buyer in respect of any lot and any express or implied conditions or warranties are hereby excluded.

(b) Any lot which proves to be a 'deliberate forgery' may be returned by the buyer to Dix Noonan Webb within 15 days of the date of the auction in the same condition in which it was at the time of the auction, accompanied by a statement of defects, the number of the lot, and the date of the auction at

which it was purchased. If Dix Noonan Webb is satisfied that the item is a 'deliberate forgery' and that the buyer has and is able to transfer a good and marketable title to the lot free from any third party claims, the sale will be set aside and any amount paid in respect of the lot will be refunded, provided that the buyer shall have no rights under this Condition if:

(i) the description in the catalogue at the date of the sale was in accordance with the then generally accepted opinion of scholars and experts or fairly indicated that there was a conflict of such opinion; or

(ii) the only method of establishing at the date of publication of the catalogue that the lot was a 'deliberate forgery' was by means of scientific processes not generally accepted for use until after publication of the catalogue or a process which was unreasonably expensive or impractical.

(c) A buyer's claim under this Condition shall be limited to any amount paid in respect of the lot and shall not extend to any loss or damage suffered or expense incurred by him or her.

(d) The benefit of the Condition shall not be assignable and shall rest solely and exclusively in the buyer who, for the purpose of this condition, shall be and only be the person to whom the original invoice is made out by Dix Noonan Webb in respect of the lot sold.

#### Conditions mainly concerning Sellers and Consignors

##### 13 Warranty of title and availability

The seller warrants to Dix Noonan Webb and to the buyer that he or she is the true owner of the property or is properly authorised to sell the property by the true owner and is able to transfer good and marketable title to the property free from any third party claims. The seller will indemnify Dix Noonan Webb, its servants and agents and the buyer against any loss or damage suffered by either in consequence or any breach on the part of the seller.

##### 14 Reserves

The seller shall be entitled to place prior to the auction a reserve on any single item lot which has a minimum value of £100, being the minimum 'hammer price' at which that lot may be treated as sold. A reserve once placed by the seller shall not be changed without the consent of Dix Noonan Webb. Dix Noonan Webb may at their option sell at a 'hammer price' below the reserve but in any such cases the sale proceeds to which the seller is entitled shall be the same as they would have been had the sale been at the reserve. Where a reserve has been placed, only the auctioneer may bid on behalf of the seller.

##### 15 Authority to deduct commission and expenses

The seller authorises Dix Noonan Webb to deduct commission at the 'stated rate' and 'expenses' from the 'hammer price' and acknowledges Dix Noonan Webb's right to retain the premium payable by the buyer.

##### 16 Rescission of sale

If before Dix Noonan Webb remit the 'sale proceeds' to the seller, the buyer makes a claim to rescind the sale that is appropriate and Dix Noonan Webb is of the opinion that the claim is justified, Dix Noonan Webb is authorised to rescind the sale and refund to the buyer any amount paid to Dix Noonan Webb in respect of the lot.

##### 17 Payment of sale proceeds

Dix Noonan Webb shall remit the 'sale proceeds' to the seller not later than 35 days after the auction, but if by that date Dix Noonan Webb has not received the 'total amount due' from the buyer then Dix Noonan Webb will remit the sale proceeds within five working days after the date on which the 'total amount due' is received from the buyer. If credit terms have been agreed between Dix Noonan Webb and the buyer, Dix Noonan Webb shall remit to the seller the sale proceeds not later than 35 days after the auction unless otherwise agreed by the seller.

18 If the buyer fails to pay to Dix Noonan Webb the 'total amount due' within 3 weeks after the auction, Dix Noonan Webb will endeavour to notify the seller and take the seller's instructions as to the appropriate course of action and, so far as in Dix Noonan Webb's opinion is practicable, will assist the seller to recover the 'total amount due' from the buyer. If circumstances

do not permit Dix Noonan Webb to take instructions from the seller, the seller authorises Dix Noonan Webb at the seller's expense to agree special terms for payment of the 'total amount due', to remove, store and insure the lot sold, to settle claims made by or against the buyer on such terms as Dix Noonan Webb shall in its absolute discretion think fit, to take such steps as are necessary to collect monies due by the buyer to the seller and if necessary to rescind the sale and refund money to the buyer.

19 If, notwithstanding that the buyer fails to pay to Dix Noonan Webb the 'total amount due' within three weeks after the auction, Dix Noonan Webb remits the 'sale proceeds' to the seller, the ownership of the lot shall pass to Dix Noonan Webb.

#### 20 Charges for withdrawn lots

Where a seller cancels instructions for sale, Dix Noonan Webb reserve the right to charge a fee of 15 per cent of Dix Noonan Webb's then latest estimate or middle estimate of the auction price of the property withdrawn, together with Value Added Tax thereon if the seller is resident in the European Union, and 'expenses' incurred in relation to the property.

#### 21 Rights to photographs and illustrations

The seller gives Dix Noonan Webb full and absolute right to photograph and illustrate any lot placed in its hands for sale and to use such photographs and illustrations and any photographs and illustrations provided by the seller at any time at its absolute discretion (whether or not in connection with the auction).

#### 22 Unsold lots

Where any lot fails to sell, Dix Noonan Webb shall notify the seller accordingly. The seller shall make arrangements either to re-offer the lot for sale or to collect the lot.

23 Dix Noonan Webb reserve the right to charge commission up to one-half of the 'stated rates' calculated on the 'bought-in price' and in addition 'expenses' in respect of any unsold lots.

#### General conditions and definitions

24 Dix Noonan Webb sells as agent for the seller (except where it is stated wholly or partly to own any lot as principal) and as such is not responsible for any default by seller or buyer.

25 Any representation or statement by Dix Noonan Webb, in any catalogue as to authorship, attribution, genuineness, origin, date, age, provenance, condition or estimated selling price is a statement of opinion only. Every person interested should exercise and rely on his or her own judgement as to such matters and neither Dix Noonan Webb nor its servants or agents are responsible for the correctness of such opinions.

26 Whilst the interests of prospective buyers are best served by attendance at the auction, Dix Noonan Webb will, if so instructed, execute bids on their behalf. Neither Dix Noonan Webb nor its servants or agents are responsible for any neglect or default in doing so or for failing to do so.

27 Dix Noonan Webb shall have the right, at its discretion, to refuse admission to its premises or attendance at its auctions by any person.

28 Dix Noonan Webb has absolute discretion without giving any reason to refuse any bid, to divide any lot, to combine any two or more lots, to withdraw any lot from the auction and in case of dispute to put up any lot for auction again.

29 (a) Any indemnity under these Conditions shall extend to all actions, proceedings costs, expenses, claims and demands whatever incurred or suffered by the person entitled to the benefit of the indemnity.

(b) Dix Noonan Webb declares itself to be a trustee for its relevant servants and agents of the benefit of every indemnity under these Conditions to the extent that such indemnity is expressed to be for the benefit of its servants and agents.

30 Any notice by Dix Noonan Webb to a seller, consignee, prospective bidder or buyer may be given by first class mail or airmail and if so given shall be deemed to have been duly received by the addressee 48 hours after posting.

31 These Conditions shall be governed by and construed in accordance with English law. All transactions to which these Conditions apply and all matters

connected therewith shall also be governed by English law. Dix Noonan Webb hereby submits to the exclusive jurisdiction of the English courts and all other parties concerned hereby submit to the non-exclusive jurisdiction of the English courts.

32 In these Conditions:

(a) 'catalogue' includes any advertisement, brochure, estimate, price list or other publication;

(b) 'hammer price' means the price at which a lot is knocked down by the auctioneer to the buyer;

(c) 'total amount due' means the 'hammer price' in respect of the lot sold together with any premium, Value Added Tax chargeable and additional charges and expenses due from a defaulting buyer in pounds sterling;

(d) 'deliberate forgery' means an imitation made with the intention of deceiving as to authorship, origin, date, age, period, culture or source which is not shown to be such in the description in the catalogue and which at the date of the sale had a value materially less than it would have had if it had been in accordance with that description;

(e) 'sale proceeds' means the net amount due to the seller being the 'hammer price' of the lot sold less commission at the 'stated rates' and 'expenses' and any other amounts due to Dix Noonan Webb by the seller in whatever capacity and howsoever arising;

(f) 'stated rate' means Dix Noonan Webb published rates of commission for the time and any Value Added Tax thereon;

(g) 'expenses' in relation to the sale of any lot means Dix Noonan Webb charges and expenses for insurance, illustrations, special advertising, packing and freight of that lot and any Value Added Tax thereon;

(h) 'bought-in price' means 5 per cent more than the highest bid received below the reserve.

#### 33 Vendors' commission of sales

A commission of 15 per cent is payable by the vendor on the hammer price on lots sold.

#### 34 VAT

Commission, illustrations, insurance and advertising are subject to VAT if the seller is resident in the European Union.

#### Bankers:

Lloyds TSB  
Piccadilly London Branch  
39 Piccadilly  
London W1J 0AA

Sort Code: 30-96-64  
Account No. 0622865  
Swift Code: LOYDGB2L  
IBAN: GB70LOYD30966400622865  
BIC: LOYDGB21085



[www.dnw.co.uk](http://www.dnw.co.uk)

We were established in 1991 and are located in a six-storey Georgian building in the heart of London's Mayfair, two minutes walk from Green Park underground station.

Our staff of experts collectively have over 300 years of unrivalled experience on all aspects of numismatics and jewellery, including coins of all types, tokens, commemorative medals, paper money, orders, decorations, war medals, militaria, numismatic books, jewellery, watches, objects of vertu, gemology and diamond grading.

We hold numerous auctions each year, the full contents of which are published on the internet around one month before the sale date, together with a unique preview facility which is available as lots are catalogued and photographed. Printed auction catalogues for auctions are mailed to subscribers approximately three weeks prior to each sale.



*Auction viewing room*



*Reception*

Our offices, open from 9am to 5:30pm, Monday to Friday, include a pre-auction viewing room, enabling us to offer this facility to clients during the three weeks prior to an auction.

Auctions are held in our building at 16 Bolton Street, Mayfair, where sales may be attended in person. Free online bidding is available using our own live bidding system or by placing commission bids, all of which and much more being available via our website at [www.dnw.co.uk](http://www.dnw.co.uk).

We look forward to welcoming clients to Bolton Street and assure you of a warm reception.

#### Location





**DIX  
NOONAN  
WEBB**

16 Bolton Street Mayfair  
London W1J 8BQ  
Telephone 020 7016 1700  
Fax 020 7016 1799  
Email [jewellery@dnw.co.uk](mailto:jewellery@dnw.co.uk)

[www.dnw.co.uk](http://www.dnw.co.uk)