

BOARD of DIRECTORS

Pierce Noonan	Managing Director and CEO	020 7016 1700	pierce@dnw.co.uk
Nimrod Dix	Executive Chairman	020 7016 1820	nimrod@dnw.co.uk
Robin Greville	Head of Systems Technology	020 7016 1750	robin@dnw.co.uk
Christopher Webb	Head of Coin Department	020 7016 1801	chris@dnw.co.uk

AUCTION SERVICES and CLIENT LIAISON

Philippa Healy	Head of Administration (Associate Director)	020 7016 1775	philippa@dnw.co.uk
Emma Oxley	Accounts and Viewing	020 7016 1701	emma@dnw.co.uk
Christopher Mellor-Hill	Head of Client Liaison (Associate Director)	020 7016 1771	christopher@dnw.co.uk
Chris Rumney	Client Liaison Europe (Numismatics)	020 7016 1771	chrisrumney@dnw.co.uk
Chris Finch Hatton	Client Liaison	020 7016 1754	finch@dnw.co.uk
David Farrell	Head of Logistics	020 7016 1753	dave@dnw.co.uk
James King	Deputy Head of Logistics	020 7016 1833	james@dnw.co.uk

JEWELLERY, WATCHES and OBJECTS of VERTU

Frances Noble	Head of Department (Associate Director)	020 7016 1781	frances@dnw.co.uk
Laura Smith	Specialist	020 7016 1782	laura@dnw.co.uk

MEDALS and MILITARIA

Nimrod Dix	Head of Department (Director)	020 7016 1820	nimrod@dnw.co.uk
Oliver Pepys	Specialist (Associate Director)	020 7016 1811	oliver@dnw.co.uk
Mark Quayle	Specialist (Associate Director)	020 7016 1810	mark@dnw.co.uk
John Hayward	Consultant	020 7016 1700	johnhayward@dnw.co.uk
Arkadi Kilman	Consultant (Russian Awards)	020 7016 1700	akilman@dnw.co.uk
Dixon Pickup	Consultant (Militaria)	020 7016 1700	dixon@dnw.co.uk

COINS, BANKNOTES, TOKENS and COMMEMORATIVE MEDALS

Christopher Webb	Head of Department (Director)	020 7016 1801	chris@dnw.co.uk
Peter Preston-Morley	Specialist (Associate Director)	020 7016 1802	ppm@dnw.co.uk
Jim Brown	Specialist	020 7016 1803	jim@dnw.co.uk
Tim Wilkes	Specialist	020 7016 1804	tim@dnw.co.uk
Nigel Mills	Consultant (Artefacts and Antiquities)	020 7016 1700	nigelmills@dnw.co.uk
Peter Mitchell	Consultant (British Hammered Coins)	020 7016 1700	petermitchell@dnw.co.uk
Micheal O'Grady	Consultant (Paper Money)	020 7016 1700	michealogrady@dnw.co.uk
Douglas Saville	Consultant (Numismatic Literature)	020 7016 1700	douglassaville@dnw.co.uk

TECHNOLOGY and MEDIA

Robin Greville	Head of Systems Technology (Director)	020 7016 1750	robin@dnw.co.uk
Ian Anderson	Head of Online Services (Associate Director)	020 7016 1751	ian@dnw.co.uk
Jan Starnes	Head of Photography (Associate Director)	020 7016 1773	jan@dnw.co.uk
Ian Kington	Photographer	020 7016 1774	iank@dnw.co.uk
Henry Browne	Photographic Consultant	020 7016 1774	henry@dnw.co.uk
Will Bennett	Senior Press Officer	07770 694254	will@dnw.co.uk
Danielle Quinn	Online Marketing	020 7016 1772	danielle@dnw.co.uk

UK REPRESENTATIVES

Richard Gladdle	Northamptonshire and the Home Counties	richardgladdle@dnw.co.uk
Garry Charman	The Midlands	garrycharman@dnw.co.uk
Micheal Trenerry	The West Country	michealtrenerry@dnw.co.uk
Jon Mann	North of England	jonmann@dnw.co.uk
Colin Fraser	Scotland	colinfraser@dnw.co.uk

OVERSEAS REPRESENTATIVES

John Burrridge MG	Australia Western Australia	johnburrridge@dnw.co.uk
Tanya Ursual	Canada Ontario	tanyaursual@dnw.co.uk
Micheal Gietzelt	Germany Berlin	michealgietzelt@dnw.co.uk
Eiichi Ishii	Japan Tokyo	eiichiishii@dnw.co.uk
Natalie Jaffe	South Africa Cape Town	nataliejaffe@dnw.co.uk
Dr Andy Singer	United States of America Maryland	andysinger@dnw.co.uk



DIX NOONAN WEBB Ltd
16 Bolton Street
Mayfair
London W1J 8BQ
Tel: 020 7016 1700
Fax: 020 7016 1799
VAT No. GB 562 8504 32
Registered at the above address 02562425

Account Enquiries: accounts@dnw.co.uk
General Auction Enquiries: auctions@dnw.co.uk
To place Commission Bids: www.dnw.co.uk
To book Viewing Appointments: viewing@dnw.co.uk
To Order a Catalogue: www.dnw.co.uk

Bankers: Lloyds, 39 Piccadilly, London W1J 0AA. Sort Code: 30-96-64. Account No. 0622865
Swift Code: LOYDGB2L IBAN: GB70LOYD30966400622865 BIC: LOYDGB21085

AN AUCTION OF

JEWELLERY, WATCHES AND OBJECTS OF VERTU

VIEWING
AUCTION

Live Online Auction

With room bidding available at

16 Bolton Street

London

W1J 8BQ

Free live bidding:

www.dnw.co.uk

Tuesday 26th June 2018

at 2pm

VIEWING

Monday 18th to Wednesday 20th June

16 Bolton Street, Mayfair, London W1J 8BQ

Strictly by appointment only

Thursday 21st June 1:00pm to 7:00pm

Friday 22nd June 10:00am to 4:30pm

Monday 25th June 10:00am to 4:30pm

The Morning of the Sale 10:00am to 1:00pm

16 Bolton Street, Mayfair, London W1J 8BQ

Public viewing

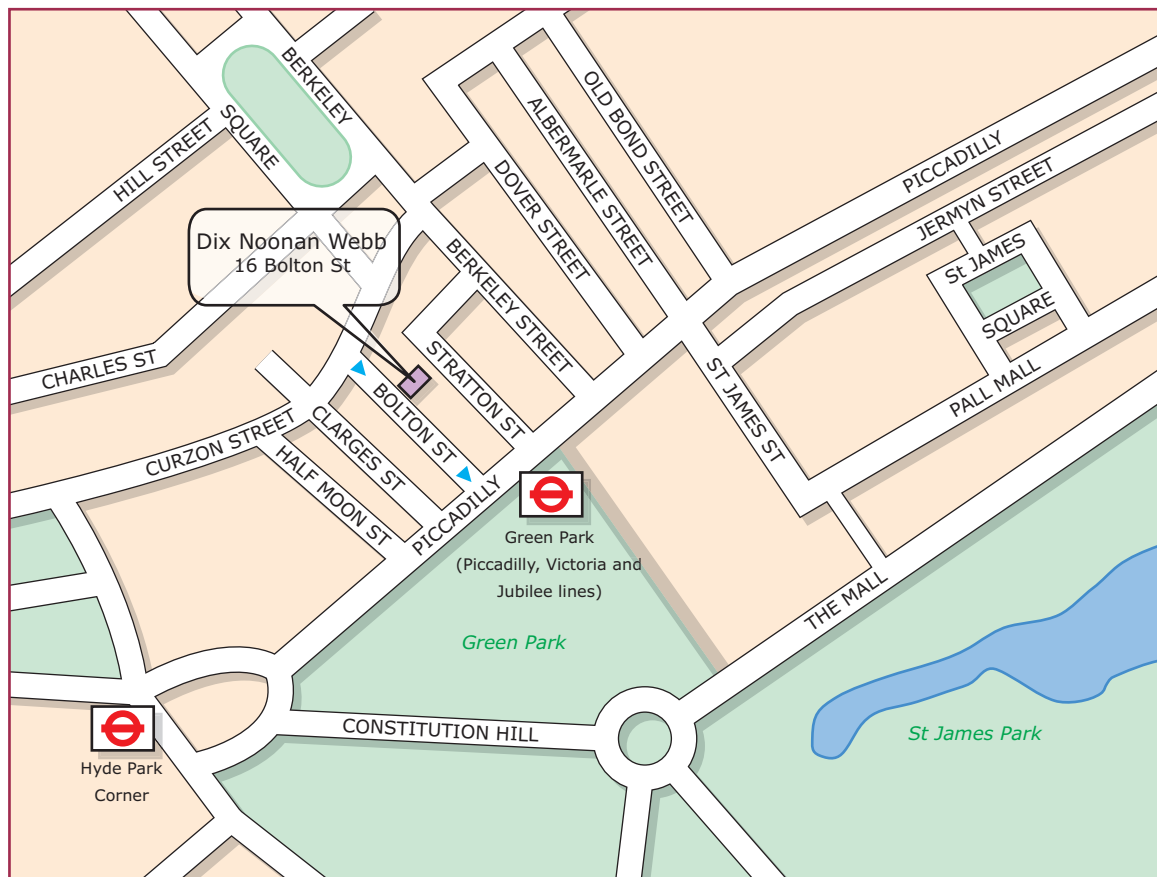
In sending commissions or making enquiries please contact:

Frances Noble or Laura Smith

CONTENTS

Please note: Lots will be sold at a rate of approximately 120 per hour

Jewellery	1-258
Objects of Vertu	259-278
Watches	279-298



Advance Bidding Facility

We strongly advise clients to take advantage of our easy to use advance bidding facility which provides bidders with total control over their bids right up to the point that the lot is offered for sale.

Bids made online cannot be seen by others and do not go live until the actual moment that the lot in question is being offered for sale. All bids can be easily altered or cancelled by the bidder prior to this point. An automated email will be sent confirming all bids and alterations.

Anyone with a valid email address can easily register to bid online.

There is no additional charge for online bidding and it is not necessary to pre-register a payment card in order to do so.

It is recommended that all bidders execute their own bids either prior to the sale by using our online advance bidding facility or live as the auction is taking place.

Whilst we are still happy to execute all bids submitted in writing or by phone, fax, etc., it should be noted that all bids left with us will be entered at our offices using the same bidding facility to which all our clients have access. There is, therefore, no better way of ensuring the accuracy of your advance bids than to place them yourself online.

Please note that advance bids are executed in the order in which they are received; therefore in the event of a tie any equal bid placed earlier will win the lot.

For any support queries please contact:

*Ian Anderson
ian@dnw.co.uk
020 7016 1751*

IMPORTANT INFORMATION FOR BUYERS

All lots in DNW auctions are automatically reserved at the bid step which reflects 80% of the lower estimate figure, unless otherwise instructed by the vendor.

Lots marked ‘*’ are subject to VAT at 20% unless exported outside the EU

**Lots marked ‘x’ are subject to importation duty of 5%
on the hammer price unless re-exported outside the EU.**

SALEROOM NOTICES

Should the description of a lot need to be amended after the publication of this catalogue, the amended description will appear automatically on the DNW website, www.dnw.co.uk. All such amendments are incorporated in the list of saleroom notices pertaining to this auction which are also posted on the DNW website. **Prospective bidders are strongly urged to consult this facility before sending bids or bidding online.**

TREATED GEMSTONES

It is common practice for many gemstones to be subject to various treatments to improve their appearance. Sapphires and rubies are routinely heat treated to improve their colour and clarity, emeralds may be treated with oils or resin, other gemstones may be subject to treatments such as staining, irradiation or coating. Jade may be bleached, polymer/resin filled or dyed, or a combination of treatments used.

Bidders should be aware that, unless stated to the contrary in the catalogue description, it should be assumed that the gemstones may be treated. Where Reports are provided from Gem Laboratories, the opinions as to gradings and treatments of stones may differ slightly between laboratories and DNW cannot be held responsible for any discrepancies.

UNMOUNTED GEMSTONES

Please note that VAT at 20% is chargeable on the Hammer Price of unmounted gemstones, excluding diamonds, rubies, sapphires and emeralds, and relevant lots are marked with an asterisk *.

EXPORT OF IVORY

The US Government has banned the import of ivory into the USA.

EXPORT OF OTHER ORGANIC MATERIALS

Other organic materials, such as coral and tortoiseshell may be covered by CITES legislation, and this may or may not impact export to other countries, please see www.cites.org for more information.

EXPORT OF WATCHES

Please note that watches by CORUM, FRANCK MULLER, PIAGET, TUDOR AND ROLEX are subject to import restrictions into the USA.

Please also note that in some circumstances we are unable to ship the watch with its strap due to certain import restrictions regarding material derived from endangered or otherwise protected species.

BUYERS' PREMIUM

Please note that the buyers' premium in this sale is 20% (plus VAT unless exported outside the EU).

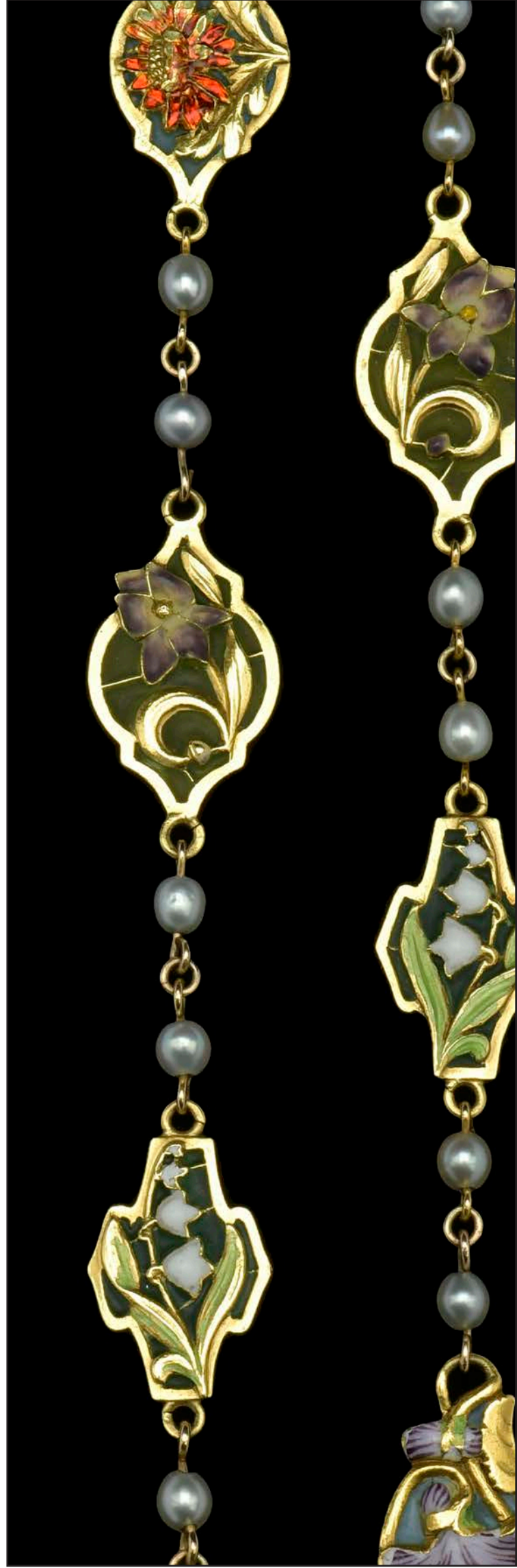
CATALOGUE ILLUSTRATIONS AND THE INTERNET

Prospective bidders are reminded that the DNW website features enhanced high-resolution enlarged colour illustrations of every lot in this auction.

PRICES REALISED

The hammer prices of lots sold at DNW auctions are posted at www.dnw.co.uk in real time and telephone enquiries are welcome from 09:00 on the day after the auction.

Jewellery



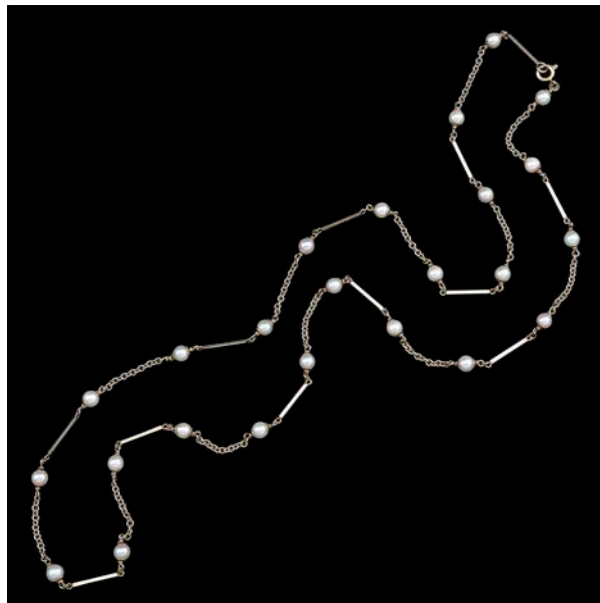
Jewellery

1



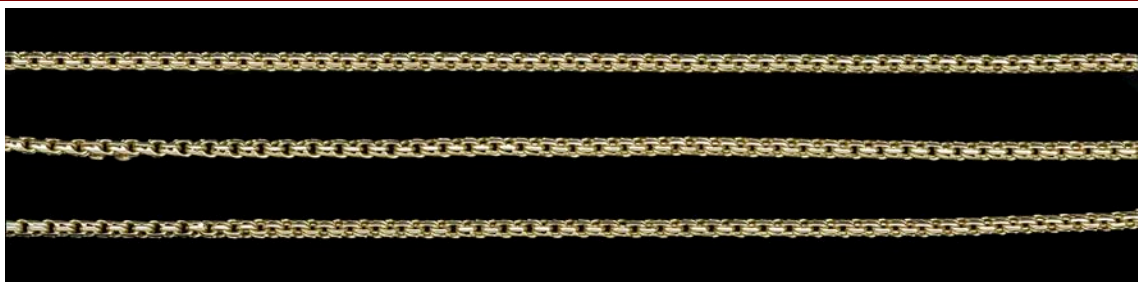
A WATER OPAL SET DROP PENDANT, the oblong cabochon water opal claw set drop on baton suspension, from similar smaller surmount, to a fine baton-link back chain with cylindrical clasp stamped '9ct', pendant length 53mm, necklace length 44cm. £300-500

2



A 9CT GOLD AND CULTURED PEARL CHAIN NECKLACE, the square section baton and belcher-link chain spaced with cultured pearls, clasp hallmarked, necklace length 82cm. £260-300

3



A FANCY KNOT-LINK CHAIN NECKLACE, with applied plaque stamped '750', to ring bolt clasp, necklace length 66cm. £400-600

4



AN EDWARDIAN OPAL AND HALF PEARL PENDANT ON AN OPAL SET CHAIN, the oval cabochon opal claw set within a half pearl surround, to a half pearl set bale, suspended from a belcher-link chain with opal bead spacers with faceted crystal girdles, cylindrical clasp stamped '15ct', *pendant length, including bale, 30mm, chain length 41cm.* £700-900

5



A PAIR OF OPAL AND DIAMOND CLUSTER EARRINGS, the oval cabochon opals within surrounds of brilliant-cut diamonds, all claw set, mounted in white precious metal, to screw back fittings, stamped '585', *cluster dimensions 16.5mm x 14.5mm.* £600-800

6

A LATE VICTORIAN/EDWARDIAN OPAL SET SERPENT STICKPIN, the oval cabochon opal collet set within a coiled serpent surround, the realistically modelled serpent with engraved snake skin detail and rose-cut diamond eyes, mounted in yellow gold, *stickpin terminal length 22mm.* £500-700



- 7 **A VICTORIAN GOLD AND BANDED AGATE HORSESHOE BROOCH/PENDANT**, the horseshoe set with slightly graduated round cabochon banded agates, unmarked, on a later fine ropetwist chain, *brooch/pendant length 20.5mm.* £400-500



- 8 **A PAIR OF ONYX DROP EARPENDANTS**, each composed of a banded agate bead drop on chain suspension from a banded agate bead surmount, to stud fittings, mounted in yellow gold, unmarked, *earpendant length 45mm.* £150-200



- 9 **A VICTORIAN GILT METAL BANDED AGATE PENDANT**, the oval cabochon banded agate collet set within a polished gilt metal surround with ropetwist detail, on tapered bale, *pendant length 55mm.* £250-300



- 10 **A VICTORIAN GOLD OVAL LOCKET WITH SERPENT SURROUND**, the hinged locket engraved with crest of triple interlocking horseshoes and letters 'de' to the front, the reverse inscribed 'Sept 19 1872', within a coiled serpent border, bearing registration mark for 27 January 1869, Class 1, parcel no 10, glazed to the interior, on tapered bale, *length 51m.* £150-200



11



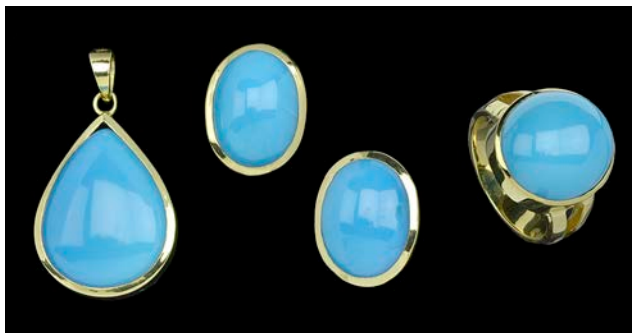
A VICTORIAN ROCK CRYSTAL, RUBY AND EMERALD SET HORSESHOE SET NECKLACE, the snake-link chain necklace spaced with three half-pearl set foliate mounts suspending graduated detachable domed cabochon rock crystal pendant drops, each applied with a mixed-cut ruby or emerald set horseshoe, mounted in yellow gold, necklace length 44cm. £800-1200

12



AN OPAL AND DIAMOND SET HINGED BANGLE, the nine graduated oval cabochon opals with pairs or trios of graduated old brilliant-cut diamonds between, claw set to a scrolled gallery, to a square section hinged bangle in yellow precious metal, later added safety chain, with case signed 'Spink & Son', internal bangle width 57mm. £2500-3000

13



A TURQUOISE COLOURED GLASS AND YELLOW PRECIOUS METAL SUITE, comprising oval cabochon earstuds, a round cabochon ring and a pear-shaped cabochon pendant, all in polished yellow precious metal mounts, stamped '750' for 18ct gold, *ring size M, pendant length, including bale, 35mm.* 400-600

14



A PAIR OF DIAMOND SET EARRINGS, the hollow half hoop design inset to the front with three brilliant-cut diamonds, to hinged post fittings, yellow precious metal mounted, *length 2cm.* £360-400

15



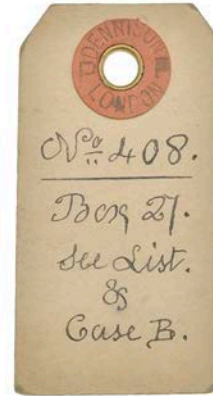
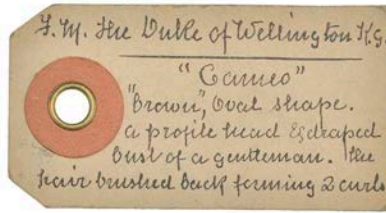
A FRENCH TURQUOISE SET BROOCH AND EARCLIP SUITE AND A CULTURED PEARL NECKLACE, the brooch and earclips of hexagonal shape and entwined ribbon form, around central domed clusters of claw set turquoise cabochons, mounted in yellow precious metal, bearing French eagle's head assay marks; the single row of slightly graduated cultured pearls to a small yellow precious metal clasp of leaf design, with cabochon turquoise accent, bearing French eagle's head assay marks, *brooch width 29.5mm, necklace length 61cm.* £800-1200

16

A TURQUOISE AND DIAMOND SET SUITE, comprising necklace, bracelet, ring and earclips, the fringe necklace composed of a series of graduated drops alternately set with slightly graduated lines of claw set single-cut diamonds or cabochon turquoise, each to an oval cabochon turquoise terminal, the drops with ropetwist borders, to a double snake-link back chain, mounted in yellow precious metal, with tapered bracelet, earclips and crossover ring all of conforming designs, *necklace length 38cm, bracelet length 17cm, ring size K.* £3000-5000



17



AN OVAL HARDSTONE COMEIO, unmounted, carved to depict the head and shoulders of a classical male in profile *a destra*, accompanied by a 19th century hand written label, *cameo length 29mm*. £400-600

The buff rectangular label is stamped 'Dennison, London' and reads to one side: 'F.(?) M., the Duke of Wellington, K. G., "Cameo", "brown", oval shape, a profile head and draped bust of a gentleman. The hair brushed back forming 2 curls' and to the reverse: 'No 408. Box 27. See List & case B.'

18

A VICTORIAN ONYX MEMORIAL PENDANT, the oval polished onyx with gold mounted to the front, later inset with a shell cameo carved to depict Zeus, to a gold and black enamel tapered bale, *pendant length, including bale, 72mm*. £200-300



19



A 19TH CENTURY GOLD MOUNTED OVAL SHELL COMEIO BROOCH, carved to depict Hebe and the eagle, within a border of engraved scrollwork and interlocking hoops, *width 5.6cm*. £400-600

Hebe, the goddess of Youth, and the personification of eternal beauty, was the daughter of Zeus and Hera, her role being cupbearer to the gods. She is depicted here serving nectar to Zeus from a bowl, with an accompanying ewer, Zeus being disguised as an eagle.

20

A SHELL COMEIO BROOCH/PENDANT, carved to depict Hermes in flight carrying the maiden Psyche in his arms, collet set in yellow precious metal mount with ropetwist detail, with hinged pendant fitting to the reverse, *width 56mm*. £60-80

The messenger god Hermes (Mercury), identified by his winged sandals and pegasus hat, is carrying the maiden Psyche to the heavens for reunion with her lover Eros (Cupid) after her many trials (from Apuleius's *Metamorphoses*).



- 21 A VICTORIAN GOLD MOUNTED SHELL CAMEO BROOCH, in fitted case, the oval shell cameo carved to depict L'Aurora, the cameo collet set within a hoop surround accented with ropetwist wirework and bead decoration, in fitted case, brooch dimensions 83mm x 67mm. £500-700



The subject of the cameo, **L'Aurora**, is after the masterpiece fresco by Guido Reni (1575-1642). The fresco was commissioned in 1614 by the Cardinal Scipione Borghese, a prominent art patron, to adorn the ceiling of his Casino, or garden house, adjacent to his Palazzo Pallavicini-Rospigliosi, in Rome. The scene depicts Helios Apollo, the god of the sun, taking to the skies in his chariot, accompanied by his companions, the hours, and preceded by Aurora, the goddess of the dawn, and the torch bearing cherub Lucifer, the genus of light.



22



A THREE COLOUR COLLAR NECKLACE, the three colour links of stylized foliate form, the clasp stamped '14k', necklace length 43cm. £600-800

23



ASSORTED CHAINS AND BRACELETS, comprising a double curb-link chain, stamped '750', a flattened curb-link chain stamped '750', a fancy-link chain, stamped '375', an Eastern bracelet incorporating 'eye' motifs, (one missing), stamped '585' and a further baton link bracelet, unmarked. £700-900

24



THREE BRACELETS, the first in two colour 18ct gold, of open snake-link form, clasp bearing partial hallmark; the second in 9ct yellow gold, of open navette-shaped links, clasp hallmarked; the third composed of two colour gold, stamped '375' (broken), with European convention marks. £300-400

25



A **FESTOON NECKLACE**, composed of coral coloured beads, the central inverted yellow precious metal spade-shaped panel with bead fringe below, between triple rows of beads, spacer bars and twin rows to each side, to polished clasp behind, stamped '750' for 18ct gold, *length 43cm.* £300-400

26

A **YELLOW PRECIOUS METAL HINGED BANGLE**, the slightly tapered, textured hinged bangle with incised foliate detail, applied bead and wirework geometric detail and ropetwist borders, *internal bangle diameter 53mm.*

£200-300



27



A **REEDED BANGLE**, the hollow hinged bangle with diagonal reeded decoration throughout, tongue of clasp stamped '14k', *internal bangle diameter 59mm.* £120-150

28



A TWO ROW CULTURED PEARL NECKLACE TO A VICTORIAN PERIDOT AND DIAMOND CLASP, the two rows of graduated cultured pearls to a hexafoil clasp, the hoop of pinched collet set old brilliant-cut diamonds around central octagonal peridot, mounted in gold and silver, necklace length 42.5cm, clasp diameter 22mm. £600-800

29



A VICTORIAN PERIDOT AND SEED PEARL RING AND A PAIR OF MATCHING EARRINGS, the octagonal step-cut citrine pinched collet set within a frilled surround of half pearls, between scrolled trifurcated shoulders, to reeded shank, mounted in yellow gold, together with a pair of later earrings, of matching design, with clip and post fittings, earring length 14mm, ring size L. £300-400

30

A DIAMOND THREE STONE RING, the three brilliant-cut diamonds claw set in white precious metal, shank stamped 'plat', diamond weights approximately 0.9, 1.05 and 0.9 carats respectively, ring size N. £3000-5000





A COMPOSITE WHITE PASTE SET NECKLACE, the riviére necklace of alternate pinched collet set single stone links and flowerhead cluster links, to a ribbon bow centrepiece, with a pavé set pear-cut pendant drop below, set throughout with white paste, mounted in foiled closed back white precious metal settings, necklace length 43cm. £300-400

32



A **SAPPHIRE AND DIAMOND PANEL RING**, the square panel set with five mixed-cut sapphires with pairs of old-cut diamonds between, to collet set single stone diamond shoulders, mounted in white precious metal, shank stamped '18ct' and 'plat', ring size O. £500-700

33

AN **ART DECO STYLE SAPPHIRE AND DIAMOND RING**, the step-cut sapphire claw set between two tapered baguette-cut diamonds, mounted in yellow and white precious metal, shank stamped 'plat, 14k', ring size J. £180-220



34



AN **EMERALD, DIAMOND AND SAPPHIRE PANEL RING**, the quatrefoil panel composed of a central rectangular step-cut emerald collet set within a rectangular surround pavé set with single-cut diamonds and with a principal old brilliant-cut diamond to each side in a partial border of shaped calibré-cut sapphires, mounted in yellow precious metal, ring size K. £400-600

35

A **SINGLE STONE EMERALD RING**, the cushion-cut emerald claw set in two colour precious metal mount, shank stamped '18ct', ring size Q. £600-800



36



AN EMERALD AND DIAMOND CLUSTER RING, the octagonal-cut emerald within a cluster surround of brilliant-cut diamonds, all claw set, between trifurcated shoulders, mounted in yellow and white precious metal, cluster diameter 18.5mm, ring size K. **£1500-2500**

37

A SAPPHIRE AND DIAMOND CLUSTER RING, the cushion-shaped mixed-cut sapphire millegrained collet set within a frilled surround of old brilliant-cut diamonds, between trifurcated shoulders, mounted in platinum, shank bearing partial hallmark, ring size T. **£2500-3000**



Harriet Glen

The following two lots are by goldsmith Harriet Glen, an award winning artist, sculptor and jeweller, now based in Dorchester, Dorset. Previously Lady Champion Jockey of New South Wales, she was brought up in Australia and studied art. Harriet's creations in jewellery and sculpture specialise in realistically modelled horses and equestrian themes, and wildlife subjects.

- 38** A 9CT GOLD HORSE PENDANT, BY HARRIET GLEN, the realistically modelled horse head with sapphire eye, within a stirrup frame, hallmarked and bearing maker's mark 'H.G', suspended on a belcher-link chain necklace, pendant length 28mm. £120-180



- 39** A 9CT GOLD BROOCH OF 'BOXING HARES', BY HARRIET GLEN, realistically modelled, the hares with sapphire eyes, on textured base, bearing maker's mark 'HG' and hallmarked for London, 1996, with maker's box, width 3.2cm. £150-200



- 40** A PAIR OF 'CINNAMON' AND WHITE DIAMOND CLUSTER EARRINGS, BY LE VIAN, the light brown brilliant-cut diamonds, claw set within square cluster surrounds of small white brilliant-cut diamonds, beneath light brown brilliant-cut diamond trio surmounts, mounted in white precious metal, mounts signed and stamped '14k', principal diamonds approximately 0.15 carats each, earstud length 9mm. £300-400



- 41** ASSORTED MIXED JEWELLERY, including Eastern white metal jewellery and belt, two hematite bead necklaces, a malachite bead necklace, and a quantity of costume jewellery, comprising bangles, earrings, necklaces, rings, watches etc.

This lot is being sold on behalf of the charity PACE, an Aylesbury based charity and school providing intensive input for children with motor disorders such as Cerebral Palsy. (Charity no. 1011133). The items have been kindly donated and are being offered for sale at No Reserve.

42



A **YELLOW PRECIOUS METAL AND BLACK CULTURED PEARL BRACELET**, the black pearls spaced by trios of polished yellow precious metal discs, all sliding mounted on a faceted belcher-link chain, clasp stamped '750' for 18ct gold, *bracelet length 19cm.*
£600-800

43



A **DIAMOND AND SAPPHIRE SET BRACELET**, the polished belcher-link chain centred with a cushion-shaped double cabochon pale blue sapphire link, spectacle set between two brilliant-cut diamonds set roundel links, the reeded spherical clasp between two matching diamond set roundels, mounted in yellow precious metal, stamped '750' for 18ct gold, in a red suede case, *bracelet length 18.5cm.*
£1000-1200

44

AN **ARTIST'S PALETTE BROOCH**, the pallet composed of polished hardstone panels, with brush detail, mounted in yellow precious metal, *length 62mm.*
£250-350



45



A COLLECTION OF ASSORTED EARRINGS, comprising 16 pairs of various designs including a pair of Edwardian aquamarine and seed pearl pendant earrings and further gem set examples. £400-600

46



A SMALL COLLECTION OF ASSORTED JEWELLERY, including a three stone diamond crossover ring, an emerald and diamond ring, a jade dress ring and a turquoise cluster dress ring, together with a rigid yellow precious metal bangle, a fawn brooch, stamped '750' and a further brooch, (jade untested for treatment or enhancements). £600-800

47



A SMALL COLLECTION OF JEWELLERY, including a single row graduated cultured pearl necklace, a heart-shaped Tiffany & Co. brooch, a spherical pendant fob watch on a long fancy baton-link chain, a yellow gold belcher-link chain, stamped '9c', two damaged belcher-link chain necklaces, stamped 'pt', and two small unmounted stones. £200-300

48



A PAIR OF 9CT GOLD MOUNTED PERIDOT EARSTUDS, the circular mixed-cut peridot in plain collet mount, on post fittings, hallmarked for London 2004, with 9ct gold butterfly fittings, together with a pair of earpendants, of flared design with pendant drop below, on post fittings (unmarked), *first pair diameter 7mm, second pair length 2.8cm.* £100-120

49

A COLLECTION OF ASSORTED JEWELLERY, comprising an early 20th century aquamarine and seed pearl pendant, two seed pearl set bar brooches, various 9ct gold charms, a sapphire and diamond five stone ring, a pair of small diamond earstuds, a silver Jubilee ingot pendant on chain, a silver gate-link bracelet and an unmounted opal triplet.

£400-500



50



A SMALL MIXED LOT, comprising an Edwardian seed pearl set openwork brooch/pendant, mount stamped '15ct', on curb-link chain, a ribbon loop brooch stamped '585', a costume jewellery pendant on chain and two rings.

£200-300

51

A COLLECTION OF MISCELLANEOUS JEWELLERY, including an Art Nouveau floral spray brooch, stamped '10k', a 9ct gold ropetwist chain necklace, a 9ct gold Victorian navette-shaped boss brooch, a silver round Victorian boss brooch, a Victorian silver mounted Scottish brooch set with malachite and further jewellery and costume jewellery contained in a gilt metal casket inset with painted ceramic panels.

£150-200



52



A **GEORGIAN GARNET SET MEMORIAL BROOCH**, the early 18th century closed back mount inscribed to the reverse 'May & Novemr 1705', with foliate engraved border, the front with a border of table-cut garnets, around a later added faceted paste over gilt wire monogram and plaited hairwork, *length 23mm*. £500-700

53



A **HAIRWORK MEMORIAL STICKPIN**, the plaited hairwork supporting gold wirework initials and scrolled border, under faceted glass, in closed back octagonal collet setting, to stickpin fitting. £150-200

54

A **PALE BLUE SAPPHIRE STICKPIN**, the cushion-shaped mixed-cut stone millegrain collet set within a scroll engraved mount, mounted in yellow precious metal, stickpin fitting stamped '585'. £200-300



- 55 AN EARLY VICTORIAN ENAMEL MOURNING BROOCH, the small oval glazed hairwork panel within an openwork wreath surround of forget-me-nots, decorated with polychrome enamel, brooch length 25.5mm. £250-300



56



AN ONYX CAMEO AND HALF PEARL CLUSTER MEMORIAL RING, the oval onyx cameo carved to depict a funerary urn, within a cluster surround of half pearls, to a band shank of square panels with black letter script reading 'In memory of' (*rubbed*), the interior inscribed 'Ob 6 May 1837, At 45, Maria Sher[?]', hallmarked for 18ct gold for London, 1836, with maker's mark 'WE', adapted, ring size K½. £150-200

- 57 AN EARLY 19TH CENTURY GOLD MEMORIAL RING, with central glazed hairwork panel within a surround of half pearls, in pinched collet closed back setting, reverse of bezel engraved 'Mary Peel ob Nov.r 5 1802 alt 19', between bifurcated scroll shoulders, inner shank strengthened, ring size L (leading edge). £300-400

Mary Peel (1783-1802) was the eldest daughter, and second of 13 children of **Lawrence Peel (1756-1827), of Ardwick**, near Manchester and his wife Alice, née Haworth. Mary was christened at St Ann's church in Manchester on 28 March 1783, but died of a 'fever' aged just 19, on 5 November 1802. She was buried at St John's church in Manchester on 9 November 1802.

Mary's father Lawrence, was the fifth son of Robert Peele (1723-95). The Peele family were originally from Oswaldtwistle, near Whalley in Lancashire, there they had been yeoman farmers, but Robert was to start a calico-printing firm in Blackburn in partnership with Messrs Jonathan Haworth and William Yates. This proved highly successful and the parsley leaf pattern they developed led to Robert being widely referred to as 'Parsley Peel' (he had chosen to drop the final 'e' from his surname). Following in his father's footsteps, Lawrence also became a successful manufacturer and merchant of textiles in Manchester. His older brother, **Robert Peel (1750-1830)** was also to expand upon the family business, owning many factories and becoming a very wealthy industrialist in his own right. He entered politics, becoming MP for Tamworth, and was later to be made Sir Robert Peel (1st Baronet). It was his son (**Mary's cousin**), the second **Sir Robert Peel (1788-1850, 2nd Baronet)**, who was to hold high political office, including that of Home secretary (twice), Chancellor of the Exchequer and **Prime Minister**, between 1834-35 and again 1841-46. He played an important role in modernising the British government's social and economic policies, including the repeal of the Corn Laws in 1846, and the creation of the modern police force, leading to a new type of officer known in tribute to him as 'bobbies' or 'peelers'.



58



A 17TH CENTURY POSY RING, the plain yellow gold band inscribed to the inside in italic script 'Time shall tell I love you well', and bearing maker's mark, ring size R. £800-1000



59



A 15TH CENTURY POSY RING, the gold band spaced with four hatched recesses with raised Gothic lettering reading 'in god is al', ring size R. £800-1200



This ring was discovered in Anstey in Leicestershire. It is recorded on the PAS database, ref: LEIC-DF38C2 and has been disclaimed as treasure (2017-T612).

A variation on this posy is recorded in Evans, J., *English Posies and Posy Rings*, Oxford University Press, 1931.

60



A 17TH CENTURY POSY RING, the plain yellow gold band inscribed to the inside 'Wee ioyne our harts in god', ring size S½. £700-900





AN 18TH CENTURY TOPAZ, RUBY AND WHITE ENAMELLED MEMORIAL RING, the central cushion-shaped golden topaz in closed back setting, between pairs of rubies, gold mounted, with trifurcated shoulders, C-scroll edged, to a white enamelled scroll panelled shank, inset with gold lettering reading 'C. PRINCE LOST IN THE VICTORY 4 OCT 1744 AE:26', ring size R.
 £1500-2000

HMS Victory, the legendary British warship that was the predecessor of Lord Nelson's **Victory**, was the flagship and pride of the Royal Navy: launched in 1737, a first rate 100-gun warship built over three elaborate decks, and being at that time the largest vessel in the world.

HMS Victory was returning to Britain on what was to be her final voyage, under the command of **Admiral Sir John Balchin**, a remarkable sailor called back from retirement into active service in June 1744 at the advanced age of 74. Admiral Balchin appears to have been blessed with an "extraordinary constitution and fortitude of mind". He had a "tenacious memory, sound judgement and the most intrepid courage; he was alarmed by no dangers, intimidated by no difficulties, he pursued his purposes with great perseverance, steadiness and resolution". (*Biographical Magazine*, 1776).

HMS Victory had been involved in a successful rescue of a convoy in the Mediterranean, and had pursued the retreating French fleet back towards Cadiz. Returning homebound, on the night of 4th October, she entered the English Channel into the eye of a vicious storm. HMS Victory sank without trace, with the loss of all hands aboard, more than 1400 sailors, marines and volunteers.

The loss of HMS Victory was a national disaster, described as "the very worst Naval catastrophe on record", (*Fraser*) and the nation became absorbed with speculation as to the cause of the tragedy, whether due to the top heavy design of the ship, possible rotting timbers, or failures by its captain to successfully navigate the storm. Blame was even levelled at the Alderney lighthouse keeper, who was subjected to a court martial, accused of failing in his duty to keep the lights on, thereby contributing to the tragedy. The association between the shipwreck and the Channel Isles continued to grow over time, with even as late as 1991, a set of stamps being printed depicting the sinking ship off Alderney, with the 18th century lighthouse helpless in the background.

For over 300 years, no one knew The Victory's final resting place, until in 2008 it was discovered by the US treasure-hunting firm Odyssey Marine Exploration. The actual site of the wreck proved to be some 60 miles from where she had been presumed to be lost, being around 70 miles from the Casquets, a group of rocky islets north west of Alderney - thus solving Britain's most compelling maritime mystery. Evidence as to her demise finally pointed to the fact that she had sunk as a direct result of the violent storm, but her design and construction being likely contributors to her final demise.

The custom of wearing jewels to commemorate the death of a loved one began hundreds of years before the Georgian era, but their popularity enjoyed a great revival in the 18th century. Rings outnumbered all other types of mourning jewels and were given by those who could afford them.

Whilst most Georgian memorial rings were decorated in black enamel, white enamel was used to signify a child, or an unmarried person, in this instance, the white enamel being for the young sailor, C Prince, aged 26. Although no records for the young mariner can be found, he is likely to have been one of a hundred young midshipmen on board, many from the noblest families in the land, and certainly this fine quality memorial ring indicates a family of wealth and status.

The image depicts the oil painting by **Peter Monamy** (1681-1749) of 'The Loss of HMS Victory 4th October 1744', held at the National Maritime Museum.

© National Maritime Museum, Greenwich, London

See: Fraser, Edward: *The Londons of the British Fleet*, John Lane, Bodley Head, 1908

I. Ballantyne & J. Eastland: *Victory, from fighting the Armada to Trafalgar and beyond*. Pub. Pen & Sword Books, 2013

Georgian Jewellery 1714-1830 by G. Redington Dawes, with Olivia Collins, published by Antiques Collectors' Club Ltd, 2007



- 62** A MEDIEVAL PEWTER LIVERY COLLAR, KNOWN AS THE HEYFORD COLLAR, LATE 15TH-EARLY 16TH CENTURY, comprising 24 S-shaped pewter studs, together with a medieval open lozenge pendant with trefoil corners, later mounted to a leather strap, *length of S-shaped studs range between 11mm-13mm, dimensions of pendant: width 42.5mm x height 35mm.* £600-1000



Dating from the 14th to 16th centuries, medieval collars of esses or livery collars are not common survivors today; however the medieval monumental effigies and brasses that fill our cathedrals display many examples. Some of these collars comprise chains of S-shaped links whilst others, such as this example, appear to be composed of studs set into a ribbon or leather collar, with a loop or pendant joining the two ends at the front. For further examples of this form see the window of St Paul's Church, London, opposite the monument of John Duke of Lancaster and also examples in the British Museum (ref: 1856,0701.2124) and the Museum of London (ref: A295).

In his research into this collar S.G. Pulley notes:

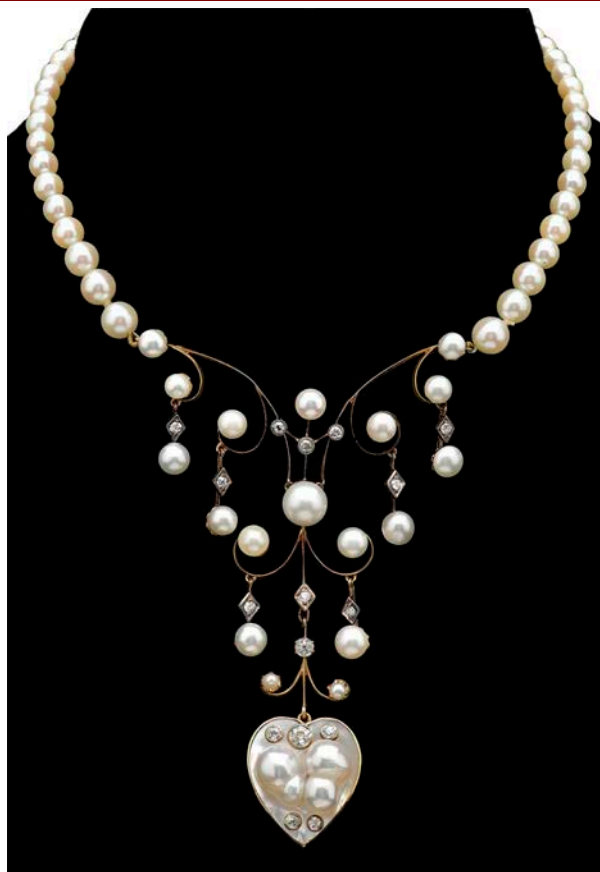
The [livery] badge was an emblematic or heraldic figure, sewn or fixed upon some prominent part of the dress of soldiers or servants to declare visibly the household or service to which they belonged. The collar however, was a distinction given to the persons of greater rank or importance, but very frequently to many who never attained the grade of knighthood, only esquire (an esquire being ranked immediately below a knight) although [] it is not unusual to find reference made of 'the order of the knights of the S'.

The Museum of London notes that '*The Lancastrian kings, Henry IV-VI, gave their chief supporters silver or gold collars made up of links in the form of the letter S. Less favoured supporters wore similarly shaped pewter badges.*'

This collar group was discovered in Nether Heyford, Northamptonshire in the early 1990s and was seen and dated by Dr John Cherry, then Deputy Keeper of Medieval and Later Antiquities at the British Museum. A copy of the letter from Dr Cherry dated 28th August 1992 is included in this lot, together with a selection of research material on livery collar necklaces.



63



A CULTURED PEARL, DIAMOND AND RUBY NECKLACE, the open articulated scrollwork centrepiece accented with cultured pearls and old brilliant-cut diamonds, suspending a fringe of similarly set drops and a central heart-shaped mother o' pearl and blister pearl pendant inset with collet set old brilliant-cut diamonds, to a graduated cultured pearl necklace with a brilliant-cut diamond and round-cut ruby set clasp, necklace length 34.5cm. £800-1000

64



A DIAMOND AND CULTURED PEARL PENDANT ON CHAIN, the cultured pearl drop in diamond set cap, suspended within a diamond set scrolled ribbon hoop surround, mounted in white precious metal, stamped '18k', to a fine curb-link chain, clasp stamped '585', pearl untested for saltwater vs. freshwater origin, pendant length 41.5mm. £400-600

65

A SINGLE ROW CULTURED PEARL NECKLACE AND A PAIR OF CULTURED PEARL EARSTUDS, the uniform pearl necklace on knotted silk, pearl diameters approximately 7mm, to a polished spherical clasp stamped '14k', together with a pair of cultured pearl earstuds, on post mounts with butterfly fittings, diameter 9mm, necklace length 45cm. £100-150



66



A LAPIS LAZULI AND CULTURED PEARL NECKLACE, composed of spherical lapis beads with cultured pearls spaced between, to a reeded spherical yellow precious metal clasp, stamped '14k, together with a pair of lapis lazuli earclips, the oval cabochons in yellow precious metal mounts, stamped '14k, with post and clip fittings, necklace length 70cm, earclip length 18mm. £250-300

67



A SAPPHIRE AND DIAMOND RING, the oval mixed-cut sapphire claw set between angular stepped shoulders set with baguette-cut diamonds, mounted in 18ct gold, bearing UK import marks, stamped '750, 18k' and '100, D072' and bearing maker's mark 'JF&S', ring size M. £200-300

68

A SAPPHIRE AND DIAMOND SET DRESS RING, the slightly domed abstract cluster of brilliant-cut diamonds and oval mixed-cut sapphires, (one replaced with blue stone), all claw set, accented with textured ribbon detail, mounted in white precious metal, shank stamped '18ct', total diamond weight approximately 1.1 carats, ring size O. £600-800



69



FOUR ASSORTED RINGS, comprising a 19th century half pearl set ring, a jasperwork inset panel ring, a 14ct gold mounted circular disc ring with central rose-cut diamond, and a pink gemstone set ring, *first ring size K, second H (leading edge)*.
£250-300

70



FOUR GEM SET RINGS, including a navette-shaped hardstone cameo ring, collet set between scrolled bifurcated shoulders, shank hallmarked for 18ct gold, together with a diamond set broad band ring of entwined knot design, a 9ct gold garnet set half hoop ring and a 9ct gold mounted sapphire and diamond cluster ring.
£300-500

71



A COLLECTION OF ASSORTED GEM SET RINGS, comprising 17 examples, including a single stone opal ring, a carved jadeite panel ring (*jade untested for treatment or enhancements*), a citrine and cultured pearl cluster ring and an amethyst and cultured pearl cluster ring, etc.
£600-800

72



FOUR VARIOUS DRESS RINGS, 1950s-1960s, including a carved red lacquer cabochon set example, a dress ring centred with a turquoise flowerhead cluster within a ribbon loop surround highlighted with claw set brilliant-cut diamonds, both mounted in yellow precious metal stamped '14k', a garnet cluster ring, mount stamped '750' and an oval mixed-cut amethyst ring in yellow precious metal wirework setting.
£300-400

73



A GROUP OF VICTORIAN JEWELLERY, including a pair of gold eardendants with applied wirework detail, a silver mounted operculum necklace, a jet necklace, a seed pearl crescent ring, a boss brooch and a collar and locket necklace.

£300-400

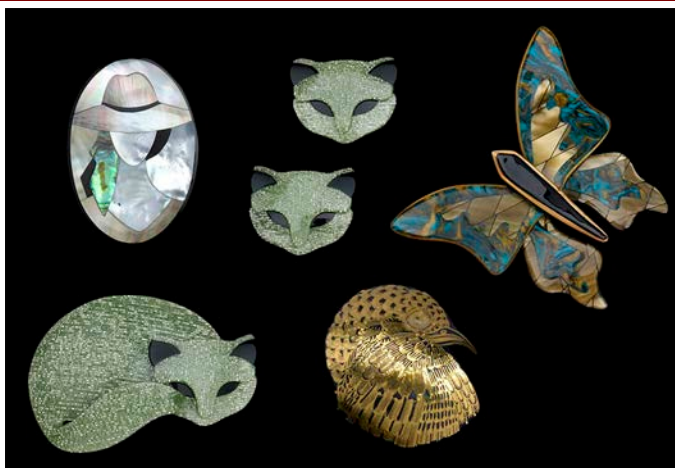
74



A COLLECTION OF JEWELLERY, comprising an Art Deco white paste bracelet, a carved ruby and emerald brooch, stamped '9ct', a purple paste brooch, a Victorian citrine scrollwork brooch, an enamel and paste set cross brooch, a silver brooch and a spider brooch.

£260-360

75



THREE BROOCHES AND A PAIR OF EARCLIPS, BY LEA STEIN, comprising a Gominia cat brooch and earclip suite in glittery pale green with black accents, a butterfly brooch and a bird head brooch, all signed, together with a further oval panel brooch, the stylise female bust composed of inlaid mother o' pearl.

£120-150

76



A VICTORIAN GOLD BRACELET WITH AN ENAMELLED PENDANT DROP, the 9ct gold curb-link bracelet of alternate polished and scroll engraved links spaced with four similarly scroll engraved heart-shaped links, suspending a 15ct gold heart-shaped pendant drop decorated with a polychrome enamel pansy with central half pearl, beneath an enamelled ribbon bow surmount, stamped '15', bracelet length 18cm, pendant length (excluding suspensory loop) 20.5mm. £800-1000

77



A LATE VICTORIAN OPENWORK DIAMOND HEART-SHAPED PENDANT, with scrolled outline around central flowerhead cluster, set throughout with rose-cut diamonds to principal old brilliant-cut diamond, mounted in white precious metal, with later hinged pendant fitting and brooch fitting, length 25.5mm. £400-600

78

A LATE VICTORIAN GOLD HEART-SHAPED PENDANT, the hollow pendant with embossed iris detail to the front, to plain suspensory loop, pendant length 28mm. £150-200





AN ART NOUVEAU ENAMELLED FLORAL PANEL NECKLACE, the variously shaped panel links centred both sides with polychrome enameled floral motifs, including lily of the valley, iris, chrysanthemum, etc, against green piqué-a-jour enamel backgrounds, mounted in yellow gold, with pairs of pearl set connecting links between, to a later ring bolt clasp, (*pearls untested and unwarranted*), necklace length 38cm. £6000-8000

80



AN 18CT WHITE GOLD 'LOVE' BANGLE, BY CARTIER, the white gold hoop bangle with screwhead details, signed and stamped '21 750' and 'HY 0432', with accompanying screwdriver, in signed fitted case and box, *internal bangle width 69mm.* £2000-2500

81

A PAIR OF THREE COLOUR 18CT GOLD 'TRINITY' HOOP EARRINGS, BY CARTIER, the three entwined hoops of yellow, rose and white gold, on hinged and post fittings, signed and stamped 'CARTIER 1997, 750' and numbered 'NT 348', with Cartier box and red suede pouch, earrings length 17mm. £800-1000



82



A 'TUBOGAS' NECKLACE, BY CARTIER, the yellow gold graduated flattened gaspipe-link collar necklace with three raised reeded motifs, signed, stamped '750' and numbered '750123', in a red Cartier pouch, necklace length 41.5cm. £3000-5000

83 ASSORTED COSTUME JEWELLERY, to include a blister pearl silver mounted pendant and earrings, stamped '925', and a quantity of necklaces, bracelets, earrings, brooches, etc. £100-150

84



A TURQUOISE COLLAR NECKLACE, the double curb-links each decorated with a collet set cabochon turquoise in ropetwist mount, between two beadwork flowerhead details, mounted in yellow precious metal, *necklace length 37cm.*

£400-600

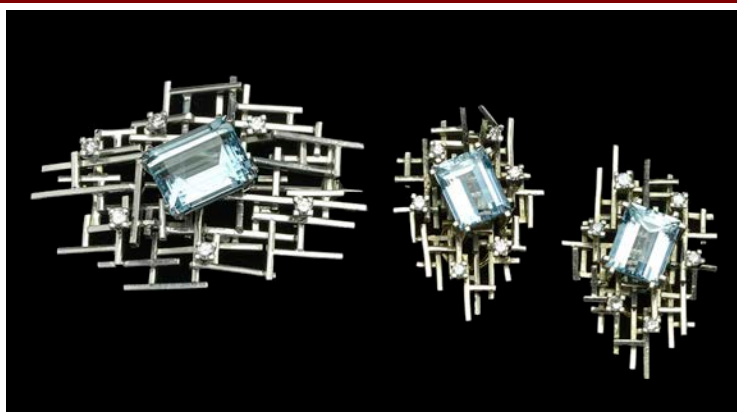
85



A SMALL GROUP OF AQUAMARINE JEWELLERY, comprising a claw set step-cut aquamarine pendant, on belcher-link chain, an oval mixed-cut aquamarine and brilliant-cut diamond three stone ring, a pendant, ring and chain hallmarked for 18ct gold, together with a pair of oval-cut aquamarine earstuds, in 9ct gold mounts and an 18ct gold wedding band, *both rings size G.*

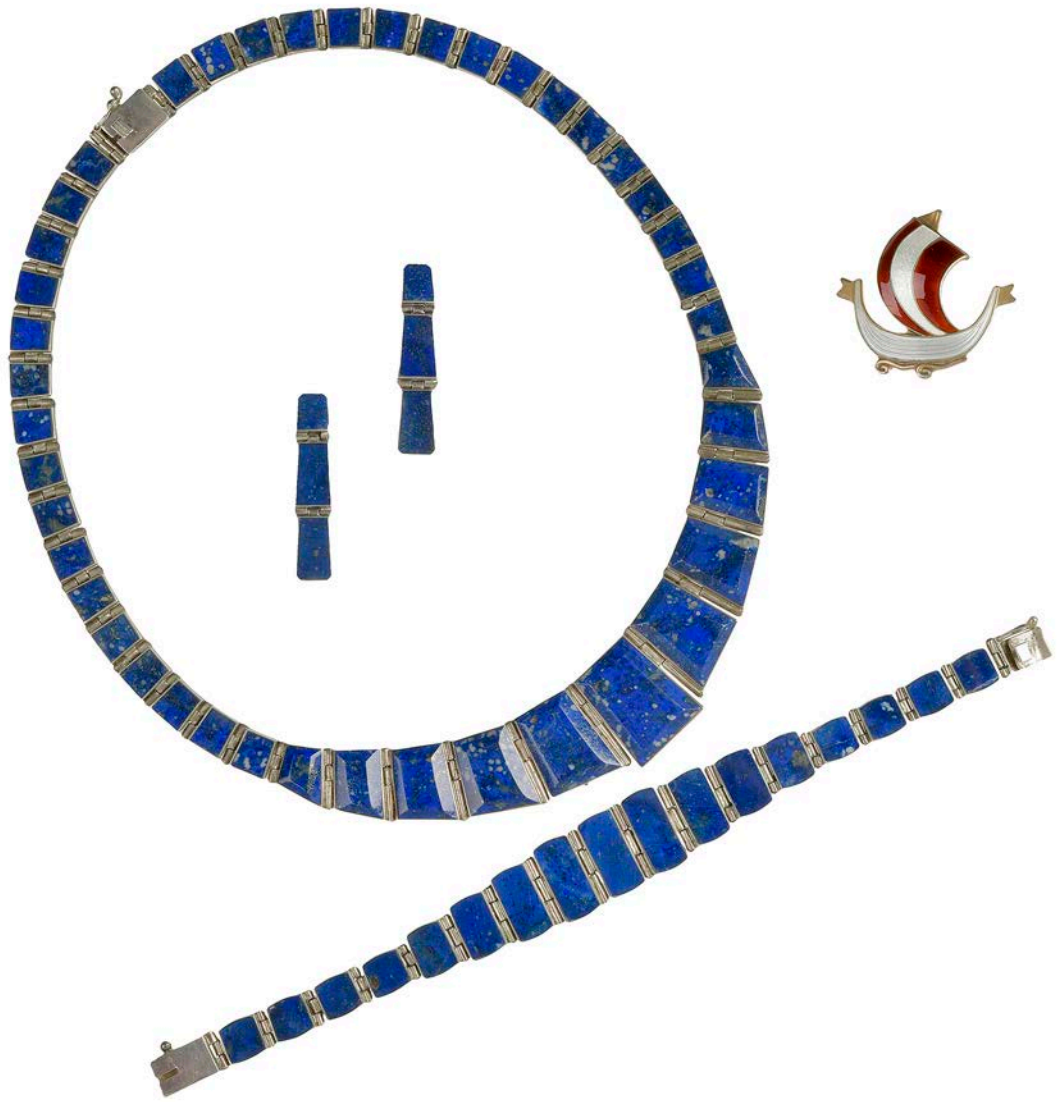
£600-800

86



AN AQUAMARINE AND DIAMOND SET BROOCH AND EARCLIP SUITE, 1970s, the brooch and earclips comprising open abstract panels of overlapping batons, accented with small brilliant and single-cut diamonds and each centred with a step-cut aquamarine, mounted in white precious metal, brooch stamped '18ct', *brooch length 45mm, earclip length 32mm.*

£800-1200



A GROUP OF ASSORTED JEWELLERY, including a lapis lazuli necklace, bracelet and earring suite, mounted in white precious metal, a Scandinavian enamelled brooch in the form of a ship and four pairs of earrings. £200-300



A VARI-GEM SET MULTI STRAND BRACELET AND RING, the five row bracelet composed of linked collet set round-cut blue, yellow and green gemstones, mounted in white precious metal, the matching ring with five articulated gem set rows to the front, both mounts stamped '750' for 18ct gold, (gemstones untested), ring size N, bracelet length 18cm. £800-1200



- 89 A TWO COLOUR GOLD AND TURQUOISE BEAD SAUTOIR AND EARPENDANTS ENSUITE, the fine mesh link sautoir of two colour gold beadwork, with flared tassel terminals, heightened with rows of turquoise tubular beads, the necklace with two small disc attachments, stamped with maker's mark KH, '750' and 'Swiss gold', together with matching tassell earpendants, on post fittings, with butterfly backs stamped '750', sautoir length 91.5gm, earpendants length 6cm. £2000-2500



90



A DIAMOND HALF ETERNITY RING, the line of princess-cut diamonds channel set between millegrained borders, mounted in polished 18ct white gold, shank hallmarked and bearing maker's mark 'MDT' and stamped '01.13', ring size M, total diamond weight 1.13 carats. £800-1000

91

A BLUE ZIRCON AND DIAMOND RING, the round-cut blue zircon claw set between single-cut diamond set shoulders, mounted in white precious metal, stamped 'plat', ring size N. £300-500



92



A DIAMOND HALF HOOP RING, channel set with seven brilliant-cut diamonds, total diamond weight approximately 1.05 carats, (shank reduced, and with bead sizes), approximate ring size J. £300-500

93

A DIAMOND CLUSTER DRESS RING, the round tiered target cluster of claw set brilliant-cut diamonds mounted in white precious metal, shank stamped '750', ring size O, total diamond weight approximately 2.25 carats. £500-700





A DIAMOND NECKLACE AND EARPENDANTS, the necklace composed throughout of graduating round brilliant and marquise-cut diamonds, each stone claw set, the front section of two row design, white precious metal clasp stamped '950, pt' together with a pair of similarly set earpendants, of cluster and quatrefoil diamond set vertical links, on hinge and post fittings, numbered '1008991', *estimated total diamond weight of necklace 20 carats, necklace length 41cm, estimated diamond weight of earpendants 2.6 carats, length 4.5cm.* **£8000-10000**

- 95 **A FIVE STONE RUBY AND DIAMOND RING**, the three mixed-cut rubies and two diamonds, all in open claw settings, mounted in yellow precious metal, shank initialled, *ring size N½*. £300-500



96



- A RUBY AND DIAMOND RING**, set with a line of calibré rubies, with bar spacers, the angular setting edged with a border of brilliants to each side, the yellow precious metal shank stamped '750', *ring size leading edge L*. £500-700

97

- A BROWN AND WHITE DIAMOND SET CROSSOVER RING**, the old brilliant-cut brown diamond claw set between two smaller white diamonds, all claw set between crossover shoulders, shank hallmarked for 18ct gold and bearing maker's mark 'JH' in shaped punch, principal diamond weight approximately 0.8 carats, *ring size S*. £600-800



98



- A RUBY AND DIAMOND SET RING**, the peaked band bezel composed of a line of small brilliant-cut diamonds between lines of round-cut rubies, in raised claw settings, mounted in yellow precious metal, shank stamped '14k, 585', *ring size Q*. £300-400



A VICTORIAN RUBY AND DIAMOND SET BROOCH, the openwork quatrefoil brooch composed of old brilliant-cut diamond set scrolls with pinched collet set mixed-cut ruby accents between, mounted in gold and silver, with detachable brooch fitting, brooch width 31mm. £1500-2000

A LATE VICTORIAN RUBY AND DIAMOND HORSESHOE BROOCH, set with a line of graduated old brilliant-cut diamonds around an inner border of mixed-cut rubies, mounted in gold and silver, length 22mm. £700-900



101



A TORQUE BANGLE, BY LALAOUNIS, the reeded sprung torque bangle with black oval panel terminals applied with gilt flying geese motifs, stamped 'A21.925, Greece' and bearing maker's mark, *internal bangle width 60mm.* £100-150

102

AN 18CT GOLD THREE COLOUR ENTWINED TRIPLE BAND RING, the three differently coloured gold with reeded texture, hallmarked for Birmingham and bearing maker's mark 'C.G.&S.', *ring size H-I.* £200-300



103



A BISHOP'S AMETHYST AND DIAMOND RING, the step-cut amethyst collet set with a cluster surround of square set brilliant-cut diamonds, to a broad shank with cross details to the shoulders, stamped '14k', *ring size Q (leading edge).* £2000-2500

104

A BANDED AGATE SIGNET RING, engraved with intaglio coat of arms, the shank engraved 'CARTIER PARIS 35601', with French eagle's head guarantee mark and a lozenge maker's mark to the outer shank, *ring size L (leading edge).* £800-1000



105



A 9CT GOLD AMETHYST AND PEARL SET PENDANT NECKLACE, the central oval mixed-cut amethyst between three half pearls, each suspending a lozenge-shaped faceted amethyst drop, the whole on double chain suspension from round-cut amethyst surmount, all stones claw set, to a belcher-link chain necklace, *pendant length 76mm*. **£500-800**

106



A PAIR OF BLACK OPAL AND DIAMOND CLUSTER EARSTUDS, the oval cabochon black opals claw set within cluster surrounds of small brilliant-cut diamonds, mounted in 18ct yellow gold, stud fittings hallmarked, (untested for treatments), *earstud length 16mm*. **£1800-2200**

107

A LILAC JADE AND DIAMOND SET RING, the oval lilac jade cabochon claw set between shoulders set with trios of marquise-cut diamonds, mounted in yellow precious metal, shank stamped '18k', (*jade untested for treatment or enhancements*), *ring size L*. **£500-700**



108



A RUBY AND DIAMOND CLUSTER RING, 1970s, the open tiered cluster of graduated brilliant and single-cut diamonds and round-cut rubies claw set in basket mount, in white precious metal, shank stamped '18ct', ring size N. £500-600

109

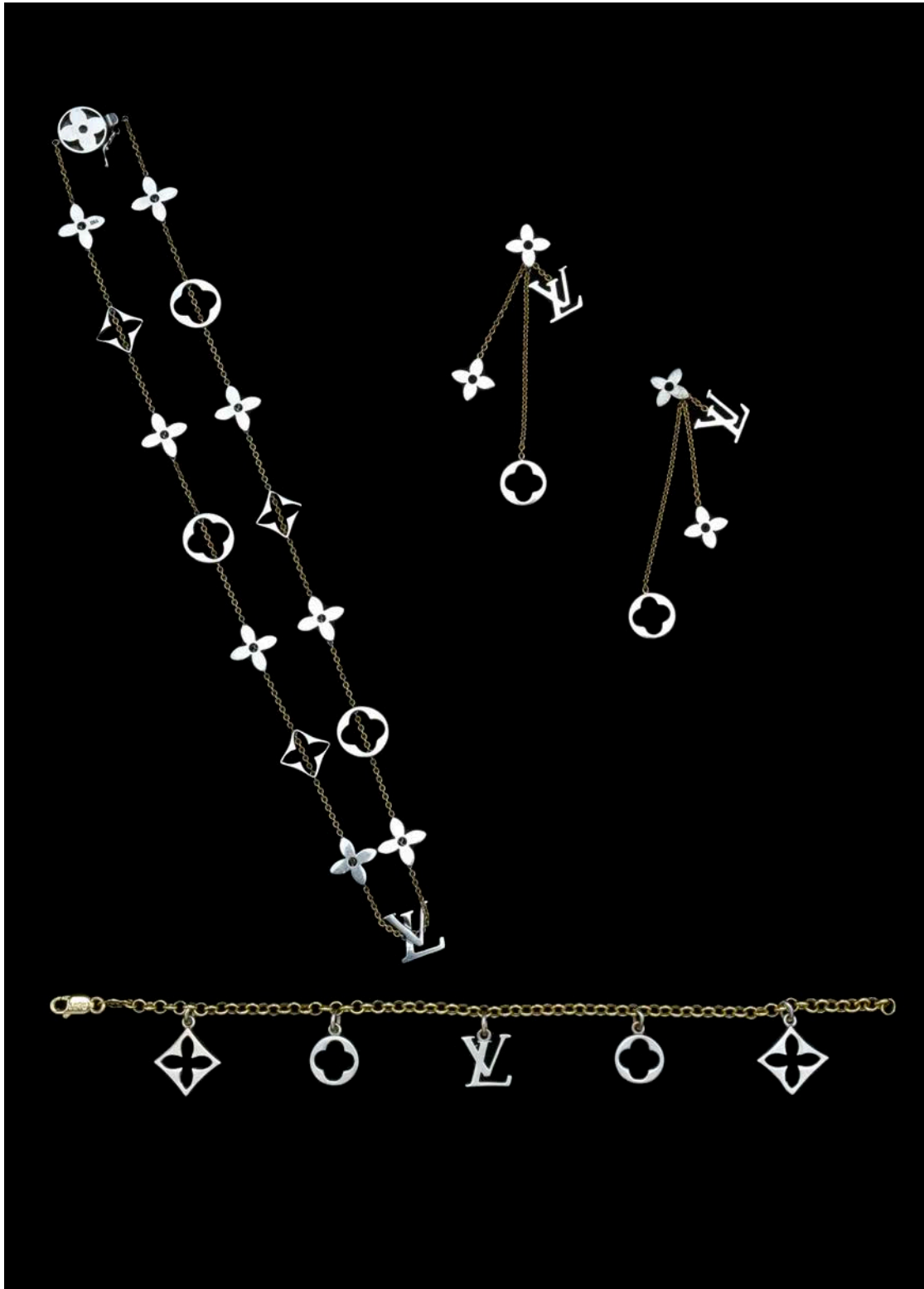
A TURQUOISE AND RUBY CLUSTER RING, CIRCA 1960s, the domed cluster dress ring set with oval cabochon turquoise, round-cut rubies and brilliant and single-cut diamonds, to a ropetwist wirework basket mount and shank, in yellow precious metal, cluster diameter 25mm, ring size L. £200-300



110



A RUBY AND DIAMOND DRESS RING, the domed openwork dress ring of whorl design, set with graduated marquise-cut diamonds and rubies, and baguette-cut diamonds, mounted in white precious metal, to a wirework shank, unmarked, ring size L½. £1000-1500



A MATCHED LOUIS VUITTON STYLE SUITE, comprising a necklace, bracelet and earpendants, in two colour precious metal, incorporating the LV monogram, quatrefoil and roundel links, the necklace signed 'LOUIS VUITTON' to the circular clasp and to the base of the monogram link, the bracelet signed also to the monogrammed link, the earpendants unsigned, all stamped '750', necklace length 41cm, bracelet length 18cm, earrings length 6.3cm. £1200-1500

112



A SPHENE AND DIAMOND DRESS RING, the geometric pierced front set with brilliant-cut diamonds and centred with an olive-green coloured oval mixed-cut sphenoid, to engraved gallery and shoulders, mounted in 14ct white gold, with European convention mark and partial UK hallmark, ring size O½. £300-400

113

A YELLOW SAPPHIRE AND DIAMOND RING, the cushion-cut yellow sapphire claw set between two brilliant-cut diamonds, with diamond set claws and entwined shoulders, mounted in 18ct white gold, shank hallmarked, ring size L, sapphire weight 4.46 carats. £1500-2000



114



A 19TH CENTURY DIAMOND SET CLUSTER RING, the flowerhead cluster of shallow rose-cut diamonds in foiled closed back settings, between similarly set single stone shoulders, with floral detail to the mount, ring size J, cluster diameter 11.5mm. £200-400

115

A 19TH CENTURY CITRINE AND DIAMOND CLUSTER RING, the cushion-shaped mixed-cut citrine within a cluster surround of rose-cut diamonds, pinched collet set in silver and gold, (adapted), ring size approximately K. £300-500





A PAIR OF GOLD EARCLIPS, BY ANDREW GRIMA AND A MATCHING BRACELET, 1960s, the earclips of abstract textured navette-shaped form, bearing maker's mark 'HJCo' and UK import marks for 1967, the matching bracelet bearing similar partial import marks, earclip length 19mm, bracelet length 19.5cm. £1200-1600

- 117** **A PADPARADSCHA PINK SAPPHIRE RING**, the oval cushion-cut sapphire within a six claw setting, to yellow precious metal mount, accompanied by a Report from GCS confirming the sapphire is of Sri Lankan (Ceylon) origin, of Padparadscha variety, with no indications of heating, sapphire approximately 5.3 carats, ring size P½. £600-800

The Report from Gemmological Certification Services is numbered 78152-70 and dated 19.04.2018.



118



FOUR PAIRS OF CUFFLINKS, comprising examples by Givenchy, Mont Blanc and Aigner, all cased.

£200-300

119



A 9CT GOLD ALBERT CHAIN WITH MEDALLION FOB, the uniform curb links individually hallmarked for 9ct gold, with T-bar and two swivel fittings, suspending a 9ct gold shield-shaped medallion surmounted by a coronet, inscribed to the reverse '8 M Cross Country Championship 1907, H Yardley', and hallmarked for Birmingham 1906, length of chain (including swivel clasps) 41.5cm.

£400-500

120



A DIAMOND AND TREATED BLUE DIAMOND LINE BRACELET, the diamonds individually claw set, white precious metal mounted, stamped '14k', length 17cm.

£800-1200

121



AN 18CT WHITE GOLD SAPPHIRE AND DIAMOND SET BRACELET BY M CHRISTOFF, composed of rectangular triangular, oval and pear-cut sapphires, each sapphire within a diamond surround and spaced by collet set trios of brilliants, all millegrain edged, the clasp stamped 18k and 'S9.09 D1.85', with report from American International Gemological Laboratories Inc, *length 17.8cm.* **£2200-2500**

The Report confirms the total sapphire weight of 9.09ct and diamond weight of 1.85 carats.

122



A TWO COLOUR 18CT GOLD AND DIAMOND LINE BRACELET BY SIMON G, set throughout with brilliant-cut diamonds in box settings, to a hoop and a hinged clip fastener, stamped 'do.97' and numbered '364049', *length 18cm.* **£1300-1500**

123



A THREE STONE SAPPHIRE AND DIAMOND BROOCH, the oval cabochon sapphire between two old brilliant-cut diamonds, all rubover set within domed mount, to an openwork bar brooch, mounted in yellow precious metal, (*brooch adapted from a ring*), *total diamond weight approximately 1 carat, bar brooch length 53.5mm.* **£1200-1500**

124



A DIAMOND SET MARQUISE PANEL RING, the central old brilliant-cut diamond in square setting, to a domed marquise-shaped bezel pavé set with smaller graduated old brilliants, mounted in white precious metal, shank stamped '14kt', ring size H, principal diamond approximately 0.45 carats. £800-1200

125

A SINGLE STONE SAPPHIRE RING, the oval mixed-cut stone claw/tension set in white precious metal, shank stamped '750', ring size K. £200-300



126

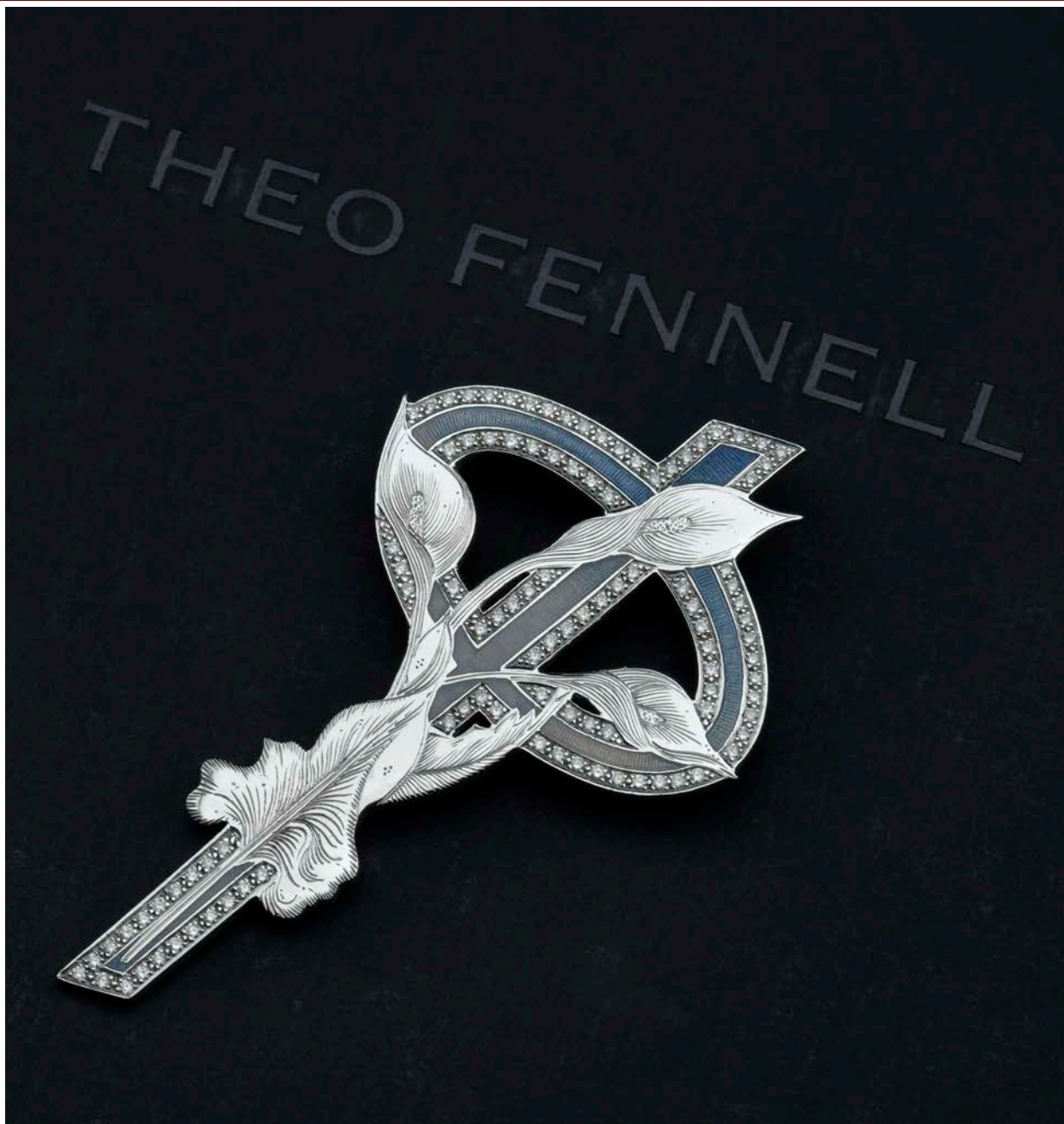


A DIAMOND SET PANEL RING, the geometric pierced bezel of oval outline composed of millegrained panels set with brilliant-cut diamonds, mounted in 18ct white gold, shank hallmarked, ring size L½. £300-500

127

A STAR SAPPHIRE AND DIAMOND CLUSTER RING, the pale grey-blue round sugar-loaf cabochon star sapphire millegrain set within a narrow cluster surround of old-cut diamonds, mounted in white precious metal, shank stamped '18ct' and 'plat', ring size N. £2000-3000





AN 18CT WHITE GOLD, ENAMEL AND DIAMOND SET LILY PHI PENDANT, BY THEO FENNELL, the Phi symbol cross decorated with graded blue guilloché enamel within brilliant-cut diamond set borders and supporting a lily spray with engraved detail, in 18ct white gold, hallmarked and bearing maker's mark and signed 'Theo Fennell, NE 4/25', on 18ct white gold square section curb-link chain, signed and hallmarked, in a signed case and box (some damage), pendant length 76mm. £2000-2500

129 A DIAMOND MARQUISE-SHAPED RING, the marquise-shaped panel pavé set with graduated old brilliant-cut diamonds to principal central stone, mounted in white precious metal, principal diamond approximately 0.5 carats, ring size L½. £600-800



130



A DOUBLE CURB-LINK BRACELET SUSPENDING A FRENCH ENAMEL CIRCULAR PENDANT, the bracelet clasp stamped '14k' and numbered '153', suspending a vari-coloured plique-à-jour enamel pendant of rose window design, mounted in yellow precious metal, with ropetwist border, lozenge mark and French guarantee mark to pendant mount, *bracelet length 18.5cm, pendant diameter 34mm.* £300-500

131

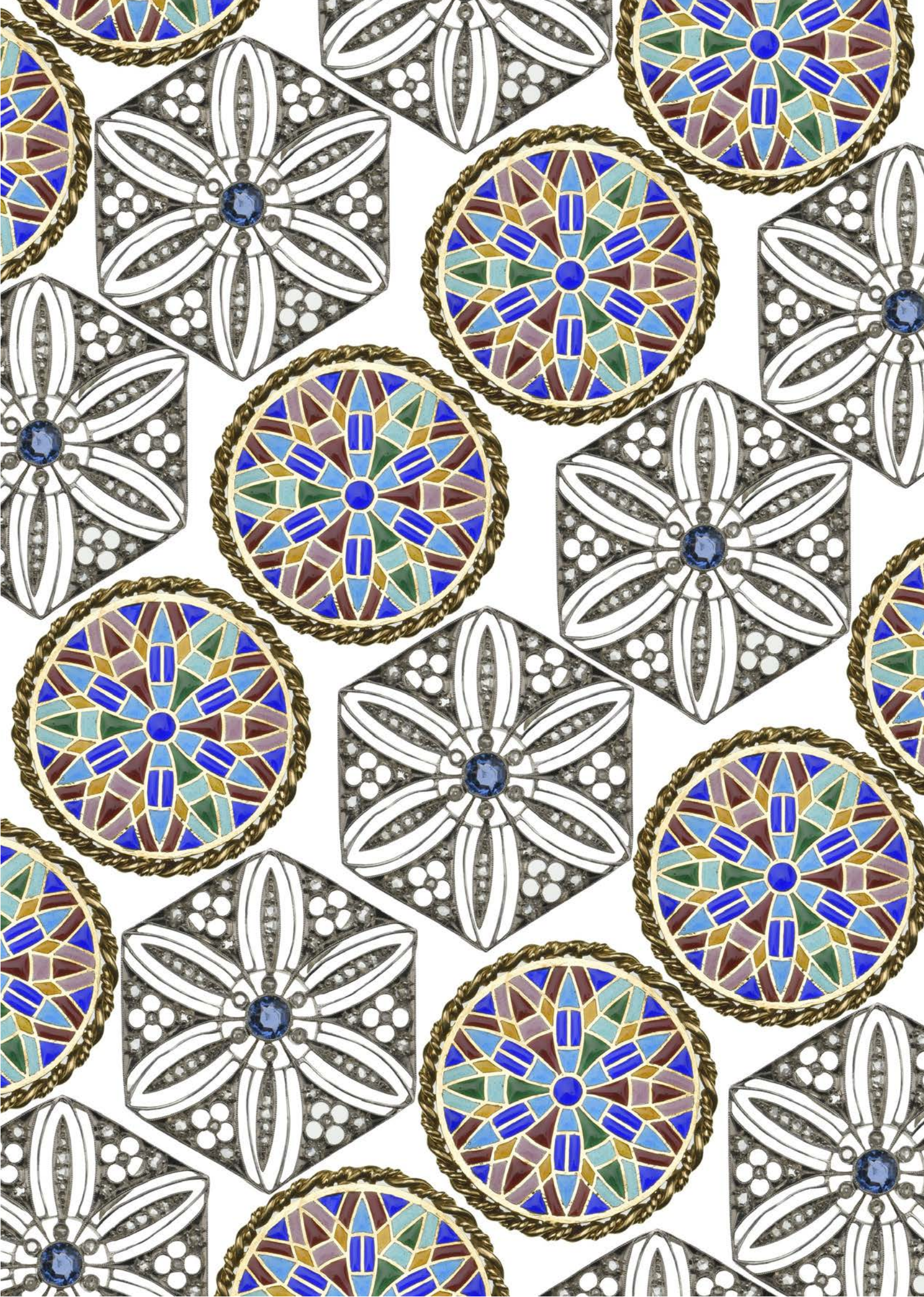
AN EDWARDIAN GEM SET HEXAGONAL PENDANT, the openwork panel pendant of floral design, millegrain set throughout with rose-cut diamonds and centred with a round-cut sapphire, (*untested for natural vs synthetic origin*), mounted in white precious metal, with fittings for a detachable back chain, together with a later 9ct white gold fine curb-link chain necklace, *pendant width 29mm.* £500-700



132



A FRENCH DIAMOND SET PENDANT, the hexagonal pendant centred with a faceted and cabochon purple glass stone with intaglio to the reverse of a naked maiden with ribbons around her waist dancing before a statue of Cupid raised on a pedestal, within a pierced work millegrained border set with rose-cut diamonds, to rose diamond set flared bale, mounted in yellow and white precious metal, bearing partial French lozenge-shaped maker's mark, *pendant length 44mm.* £400-600



- 133** A DIAMOND SET RING, the central oval-cut diamond in raised split collet setting, between shoulder channel set with calibr -cut diamonds, mounted in yellow precious metal, shank stamped '750', ring size L $\frac{1}{2}$.
£800-1200

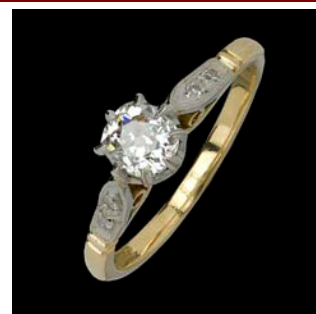


134



- A SAPPHIRE AND DIAMOND FLOWERHEAD CLUSTER RING, with central old-cut diamond within a border of sapphires, ring size L. £400-500

- 135** A SINGLE STONE DIAMOND RING, the cushion-shaped old-cut stone claw set between millegrained single-cut diamond set shoulders, mounted in yellow and white precious metal, shank stamped '18ct', principal diamond approximately 0.45 carats, ring size M $\frac{1}{2}$.
£300-500



136



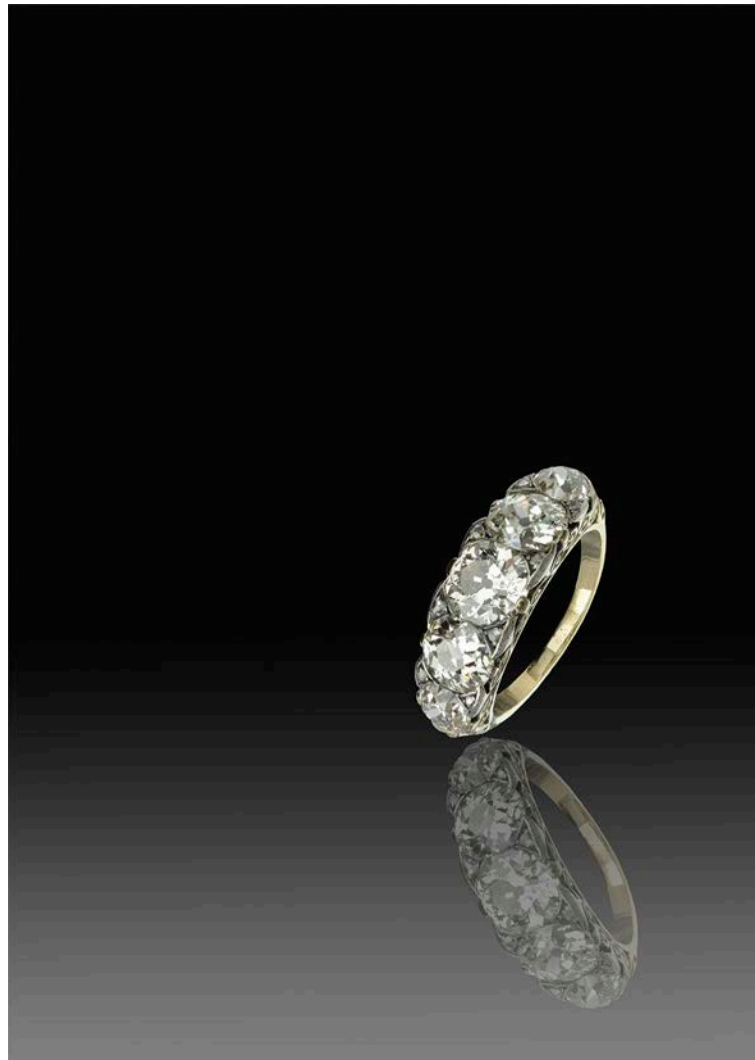
- A SAPPHIRE AND DIAMOND MARQUISE CLUSTER RING, with central mixed-cut sapphire within a surround of rose-cut diamonds to bifurcated shoulders and reeded shank, ring size L. £500-600

137



A SINGLE STONE DIAMOND RING, the brilliant-cut diamond collet set in 18ct white gold to yellow gold shank, hallmarked for London, 2000, *diamond weight approximately 0.6, ring size K.* £600-800

138



A LATE VICTORIAN FIVE STONE DIAMOND RING, the five graduated old brilliant-cut diamonds with pairs of rose-cut diamond points between, to scrolled gallery, mounted in gold and silver, *total weight of old brilliant-cut diamonds approximately 4.30-4.40 carats, ring size N½.* £5000-6000



139

A PAIR OF RUBY AND DIAMOND CLUSTER EARSTUDS, the round-cut rubies surrounded by brilliant-cut diamonds, all claw set in yellow precious metal, to stud fittings, in Asprey case, *cluster diameter 11mm.* £1400-1800

140 AN EDWARDIAN CASED SET OF SIX DIAMOND SET HAIR PINS, the double prong pins with rose-cut diamond set heads, mounted in gold and silver, in fitted red leather case, *pin length 63mm.* £400-600





141 A MOONSTONE AND SAPPHIRE BROOCH BY YARD, CIRCA 1940s/50s, together with a matching bracelet and earrings, set with cabochon moonstones and sapphire and diamond highlights, the bracelet composed of flowerhead clusters, the brooch and earrings modelled as stylised floral sprays, with screw back fittings for the earrings, all white precious metal mounted, the brooch being stamped 'YARD INC' and 'PALL' for palladian and the bracelet with ring and bolt clasp stamped '14k', the bracelet and earrings unsigned, with red leather cases for the bracelet and brooch, the silk lined 'Raymond C Yard Inc, Jewellers 607 Fifth Avenue, New York', bracelet length 19cm, brooch 4.8cm, earrings 1.7cm. £1800-2200

Raymond Yard began his career at the age of 13, in 1898, when he began working for the well-known New York jewellery firm Marcus & Co. By 1922, he had opened his own company, and for nearly 40 years ran the firm that bore his name, attracting clientele from the leading American families, such the Rockefellers, Fleischmanns and Flaglers. Yard became renowned for his detailed workmanship and use of high quality stones, being personally involved in every piece of jewellery that carried his name, which inevitably limited the number of jewels produced. Consequently pieces by YARD are rarely found on the open market. During the years of the Second World War, there was a prohibition on the use of platinum in America, (with platinum only available for use in military applications), hence Yard's occasional use of rarer metals such as Palladium, as seen in the brooch offered for sale here.



A Private Collection of Jewellery by goldsmith Mark Byles

Based in Ashford, Kent, Mark Byles is a highly talented self taught goldsmith. A potter by training, Mark has transferred his skills to the creation of jewellery, drawing inspiration from the simplicity and grandeur of ancient Greek and Roman designs, inspired as he says by 'my early visits to the British museum and the Victoria and Albert museum where I poured over the cabinets filled with ancient jewellery and artefacts'. Working from home, Mark crafts stunning jewellery in high carat gold, mostly 22 carat, enthusing over the exceptional colour and workability of the near pure molten gold during the process of casting and modelling. Mark admits most of his jewellery is made for his own pleasure, enabling him to follow his passions, rather than be dictated to by current styles or fashion.



142



A 22CT GOLD BAND RING, BY MARK BYLES, the heavy gold D-section band ring with textured finish, hallmarked for London, 2018 and bearing maker's mark, ring size R (leading edge).

£700-800

143

A 22CT GOLD SPIRAL COLLAR NECKLACE, BY MARK BYLES, of rigid continuous spiral design, with a detachable screw pin fastener, with two mini spirals of unequal length forming the clasp, bearing maker's mark 'MSB', and hallmarked for 916 with date letter for London 2017, contained in a fitted circular case of hoop design, composed of four interlocking hinged sections, diameter 17cm.

£11000-12000



- 144** A 22CT GOLD CUFF BANGLE, BY MARK BYLES, the heavy gold cuff bangle with fine textured finish, hallmarked for London, 2016 and bearing maker's mark, *internal bangle width 67mm.* £4000-4500



- 145** A 22CT GOLD CUFF BANGLE, BY MARK BYLES, the broad tapered cuff bangle with fine spot hammered finish, hallmarked for London, 2018 and bearing maker's mark, *internal bangle width 62mm.* £3000-3500



- 146** AN 18CT GOLD SERPENT RING, BY MARK BYLES, modelled as a coiled serpent with long tail, textured body and polished head, hallmarked for London, 2018 and bearing maker's mark, *ring size approximately L.* £250-300





147



A THREE ROW CULTURED PEARL NECKLACE, the three rows of uniform cultured pearls to an openwork flowerhead clasp claw set with brilliant-cut diamonds, mounted in 18ct yellow gold, bearing French eagle's head assay mark and UK import marks and maker's mark 'MC', necklace length 42cm. £600-800

148



AN EDWARDIAN DIAMOND BROOCH, centred with an old-cut diamond, within pierced wheel surround, between tapering shoulders set with single-cuts and rose-cuts, two colour precious metal mounted, principal diamond approximately 0.45 carats, length 5.7cm. £360-400

149



A 19TH CENTURY DIAMOND SET FOLIATE SPRAY BROOCH, the rose-cut diamond set scrolling leaves around central larger rose-cut diamond, all in foiled closed back settings, mounted in gold and silver, width 41.5mm. £400-600

150



A RUBY AND DIAMOND DOUBLE CLUSTER PENDANT, the two linked graduated pear-shaped clusters each centred with a ruby within a surround of brilliant-cut diamonds, mounted in white precious metal, suspended on an 18ct white gold faceted belcher-link chain, *pendant length 26mm.*

£600-800

151



A PAIR OF RUBY AND DIAMOND CLUSTER EARSTUDS, the oval mixed-cut rubies claw set within surrounds of brilliant-cut diamonds, mounted in 18ct yellow gold, stud fittings hallmarked, *cluster diameter 10mm.*

£600-800

152



A LATE 19TH CENTURY RUSSIAN DIAMOND AND RUBY DOUBLE HEART BROOCH, the two entwined hearts set with graduated old-cut diamonds and cabochon rubies, gold mounted, the pin stamped for St Petersburg, 56 zolotoniks, (Russian State marks for pre-1899), maker/work master's mark partially struck, possibly 'R(?) S' or 'K(?) S', in red leather gilt-tooled fitted case by S. J. Phillips, *brooch width 2.5cm.*

£2000-2500

153



A GEM SET FOLIATE CLIP BROOCH, MID 20TH CENTURY, the carved frosted moss agate leaf mounted in yellow precious metal, with single-cut diamond set accents, and supporting a ruby, sapphire and diamond set butterfly, to double pin fitting, length 54mm. £500-700

154

A PAIR OF LEAF EARCLIPS, the textured leaves accented with claw set round-cut rubies, to clip and post fittings, stamped 'K18', length 31mm.

£400-600



155



AN 18CT GOLD TIGER'S EYE DRESS RING, BY KUTCHINSKY, 1973, the stylised rectangular panel ring inset with two triangular tiger's eye quartz, between bark textured shoulders, mounted in yellow gold, signed and hallmarked, ring size P, bezel measures 40 x 20mm. £1500-1800

156

A DIAMOND SET FLOWERHEAD RING, the bezel modelled as a 3-dimensional bloom with textured petals, centred with a trio of claw set brilliant-cut diamonds, between geometric textured shoulders, mounted in yellow precious metal, ring size R.

£260-300



157



AN 18CT GOLD CABOCHON MOONSTONE SET BROOCH, 1970s, the cabochon moonstone of triangular shape claw set within an abstract textured radiating surround, mounted in yellow precious metal, stamped '750', length 47.5mm. £500-700

158



A GEM SET BIRD BROOCH, BY VAN CLEEF AND ARPLES, EARLY 1960s, the caricatured bird with textured feathers, cabochon turquoise body and ruby and diamond eye seated on a branch with brilliant-cut diamond set leaves and a ruby and diamond flowerhead, mounted in yellow gold, with double pin fitting, signed, stamped '750' and '63 ©', numbered '13.706' and bearing French eagle's head assay marks, length 44mm. £2800-3000

159



A PAIR OF EMERALD AND DIAMOND EARSTUDS, the oval mixed-cut emeralds claw set within surrounds of brilliant-cut diamonds, mounted in 18ct yellow gold, stud fittings hallmarked, *cluster diameter 9mm.* £600-800

160

A CHINESE JADE RING, the oval cabochon jadeite panel claw set above stylized openwork gallery and shoulders, mounted in yellow precious metal, shank bearing Chinese marks, (*jade untested for treatment or enhancements*), *ring size M.* £300-400



161



AN OPAL AND SINGLE-CUT DIAMOND DRESS RING, the oval flat cabochon opal claw set within a ribbon loop surround set with single-cut diamonds, in basket mount, to reeded two colour band shank, *ring size M½.* £500-700

162

A PAIR OF EMERALD AND SAPPHIRE SET WRAPOVER RINGS, the polished bands inset to the terminals with oval-cut sapphires or emeralds, mounted in yellow precious metal, stamped '750', *ring size O.* £800-1200



163



AN 18CT GOLD AND DIAMOND CONTEMPORARY BROOCH/PENDANT, of matt finished pierced triangular abstract form, accented with a line of graduated brilliant and single-cut diamonds, hallmarked for London, 1976 and bearing maker's mark 'JS', suspended on a curb-link chain necklace, clasp stamped '9ct', pendant length 52.5mm, chain length 28.5cm.

£400-600

164

AN 18CT GOLD AND ENAMEL 'LIBRA' RING, BY ELIZABETH GAGE, the broad tapered band ring with raised polished and ropetwist borders, the centre decorated with green guilloché enamel around a scales symbol for the Libra sign of the zodiac and other astrological symbols, the band hallmarked for London, 1993, bearing maker's mark 'EG' and stamped 'GAGE', ring size (leading edge) Q.

£600-800



165



A DIAMOND SET TORQUE RING, BY KUTCHINSKY, the polished 18ct yellow gold crossover torque ring with trios of brilliant-cut diamonds to the terminals, hallmarked and signed, ring size K, total diamond weight approximately 0.6 carats. £500-800

166

A WEDDING BAND BY GRIMA AND ANOTHER, BY CARTIER, the first of square outline, in 18ct yellow gold, signed 'Grima', stamped '750' and hallmarked for London, 1970, maker's mark indistinct; the second a narrow 18ct gold wedding band, signed 'Cartier', stamped '750', with European convention mark and numbered '61 991762', ring sizes M and T respectively. £100-150



167



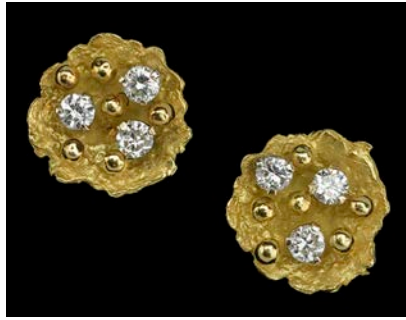
A DOG BROOCH, modelled as a Yorkshire terrier, with textured fur and diamond set collar, maker's mark 'DS&S', and stamped '750', length 3cm. £300-500

168

AN 18CT GOLD AND DIAMOND MATCHED SUITE, BY STUART WHARTON, 1970s, with brilliant-cut diamond highlights amidst applied wrigglework detail, comprising a sprung bangle with interlocking pin fastening to reverse, a circular disc pendant/brooch with hinged suspensory loop and a pair of matched circular slightly domed earstuds with post fittings, maker's mark 'JSW' to the bangle and pendant, bangle hallmarked for London, 1977, pendant for London, 1979 and earstuds unmarked, bangle inner diameter 5.2cm, pendant length (including suspensory loop) 4.2cm, excluding suspensory loop 2.4cm, earstuds diameter 11.5mm. £2000-2500



169



A PAIR OF 18CT GOLD AND DIAMOND EARSTUDS, BY STUART WHARTON, 1970s, the abstract textured panels set with an open cluster of applied beads and claw set brilliant-cut diamonds, on post fittings hallmarked and bearing maker's mark, *diameter 11.5mm.*

£300-500

170



A GEM SET BRACELET, RETAILED BY GUCCI, the two colour bracelet of 'parentesi' style links, to a single gem set link, set with cabochon synthetic sapphire and synthetic ruby, the clasp stamped '750', in a green Gucci case, *bracelet length 19.5cm.*

£600-800

171



A PAIR OF GEM SET EARCLIPS, BY KIKI McDONALD, each composed of a trio of oval mixed-cut gemstones including citrine, peridot, amethyst and aquamarine, with pairs of brilliant-cut diamonds between, around central round mixed-cut rubies, all claw set, mounted in white precious metal, stamped '750' and bearing maker's mark 'KMCD', length 19mm. £800-1000

172

A PAIR OF GEM SET EARCLIPS, BY KIKI McDONALD, each composed of an oval mixed-cut citrine claw set beneath a similar smaller peridot, with pairs of small round-cut peridots between, mounted in yellow precious metal, stamped '750' and bearing maker's mark 'KMCD', length 16.5mm. £400-600



173



A PAIR OF CITRINE AND AMETHYST EARCLIPS, the large flowerhead clusters composed of rectangular scissor-cut citrine petals around round-cut amethyst centres, with scrolling tendrils, to clip fittings, mounted in yellow precious metal, length 32mm. £400-600

174

A CITRINE AND GEM SET DRESS RING, the large dress ring set with a cushion-shaped step-cut citrine within a raised bezel, the sides rubover set with alternate cushion-cut amethysts and blue topaz, mounted in polished yellow precious metal, shank stamped '750', ring size N. £600-800





AN ITALIAN CULTURED PEARL, CITRINE, DIAMOND AND SAPPHIRE SET NECKLACE AND EARRINGS SUITE, the earrings comprising faceted heart-shaped citrine drops collet set within polished mounts, suspended beneath flared surmounts pavé set with brilliant-cut diamonds and with a central raised line of channel set calibr -cut sapphires, with clip and post fittings, the necklace with conforming centrepiece to a strand of uniform cultured pearls with gold bead spacers between with a sapphire and diamond set clasp, all mounted in yellow precious metal, stamped '750', necklace length 43cm, earring length 41mm. **£2000-2500**

- 176** AN OVAL SILVER ABSTRACT PENDANT AND MATCHING BROOCH, BY HENNING KOPPEL FOR GEORG JENSEN, of elliptical form, both numbered '390' and marked 'Georg Jensen' in oval dotted punch, stamped '925' and stamped 'GJLd' with import marks for London 1978, the pendant with unassociated chain, (pin to brooch later added) *pendant and brooch both length 4.3cm.* £80-100



- 177** A DANISH SILVER PENDANT BY GEORG JENSEN, the lozenge-shaped pendant applied with vertical band detail, incorporating the suspension loop, stamped marker's mark and '925 S', *length 23mm.* £60-80



- 178** TWO DANISH SILVER NECKLACES AND MATCHING BRACELET, composed of twisted ribbon links with hoop connections between, clasps stamped '925' and 'DENMARK', *first necklace length 64cm, second necklace, lacking clasp, length 39cm, bracelet length 18cm.* £250-300





A Cymric 9ct gold freshwater pearl and turquoise matrix necklace, circa 1900, attributed to Archibald Knox for Liberty & Co, composed of three pierced gold pendants, the central larger pendant incorporating a turquoise bead, with baroque freshwater pearl detail, with chain link connections between the two smaller pendants and spaced with further turquoise beads and pearl drops, to slim barrel clasp, the principal pendant stamped to the reverse 'CYMRIC 9ct', length 38cm. £1500-2000

Archibald Knox: (1864-1933) was born and trained in the Isle of Man, came to London in the late 1890s and was to become the principal silver and pewter designer for Liberty & Co, from 1899-1912. Steeped in the Celtic tradition of design from his Manx upbringing, he refined and purified the Celtic style to portray a personal version of Celtic ornament which was to become idiosyncratic with his style. Knox was the key designer for Liberty's 'Cymric' and 'Tudric' range, launched in 1899. The Liberty company policy enforced anonymity of its designers, hence no works were personally signed.

For a similar necklace, see page 190, *The Designs of Archibald Knox for Liberty & Co* by Adrian J Tilbrook, published by Richard Dennis 2005.

For a similar necklace, see The Fine Art Society Exhibition 9-13 November 2015, exhibit 23, showing an example set with citrines. See page 190, *The Designs of Archibald Knox for Liberty & Co* by Adrian J Tilbrook, published by Richard Dennis 2005.

Literature:

Liberty Jeweller Sketchbook p 207, (model 8008).

Stephen Martin: *Archibald Knox*, 2001; page 251, (illustrated).

180



AN AMBER BEAD NECKLACE, comprising a single continuous strand of slightly graduated irregular polished amber beads, necklace length 93cm. £100-200

181



A DANISH SILVER BROOCH BY ANTON MICHELSEN, CIRCA 1950s, DESIGNED BY GERTRUDE ENGEL, modelled as a stylised lily pad with detachable gilt flowerhead, the reverse stamped 'Sterling Denmark', with maker's mark to and facsimile signature 'Rougee', length 5.5cm. £60-80

Gertrude Engel worked for Anton Michelsen during the 1950s, signing herself 'Rougee' on her work. Her designs were based on plant forms, found along the Danish coast.

182

A SILVER 'MOONLIGHT GRAPES' BRACELET, BY GEORG JENSEN, the bracelet of stylized vine leaf links with beaded links between, to a plain circular clasp, stamped '925 S, Denmark', bearing Georg Jensen maker's marks, numbered '96' and bearing UK import marks for 1991, in signed case, length 17.5cm. £300-400

The Moonlight Grape series was a reinterpretation by Georg Jensen of their 1920s collection.



183

A COLLECTION OF SILVER MOUNTED AMBER JEWELLERY, including a large pear-shaped pendant suspended from a curved link chain necklace, box clasp stamped '925', a yellow amber set large pendant, suspended from an oval link chain necklace, stamped '925', a large trefoil shaped pendant necklace, stamped '925', a butterfly brooch, the silver mount with maker's mark 'DPA', a two colour graduated bead necklace, a dress ring, two pairs of earrings and a gilt metal compact (all amber untested for treatments), first pendant length 10.3cm, on chain length 44cm, second pendant length 7.8cm, on chain length 44.5cm. £150-200



184



A PAIR OF JADE AND DIAMOND EARSTUDS, the round jadeite cabochons collet set in yellow precious metal, within a textured white precious metal cluster surround set with brilliant-cut diamonds, to stud fittings, (*jade untested for treatment or enhancements*), earstud diameter 18mm. £500-700

185



A FRENCH OVAL JADE, YELLOW DIAMOND AND GARNET SET LOCKET, the green jade mounted with a round mixed-cut garnet, and two old-cut yellow tinted diamonds, within collet mounts, glazed verso, on suspensory loop, length 41.5mm. £500-700

186



A PAIR OF JADE EARPENDANTS AND TWO JADE SET BAR BROOCHES, the earpendants with carved shaped rectangular panels, beneath chain suspensions with bead surmounts, on screw back fittings, together with a Chinese circular disc set brooch, and a further jade bar brooch, (*all jade untested for treatment or enhancements*), earpendant length 47.5mm. £500-600

187



A BLACK OPAL DOUBLET AND DIAMOND BROOCH/PENDANT, the heart-shaped opal doublet collet set within a millegined brilliant-cut diamond set surround, beneath a similarly set scrolled surmount, in two colour precious metal mount, with brooch fitting and hinged pendant fitting, to a later fine flattened curb-link chain, stamped '925', *pendant length 32.5mm.*

£800-1000

188



A JADE BEAD NECKLACE, the single row of graduated spherical jadeite beads on knotted green cord, to a lozenge-shaped millegined single-cut diamond set clasp, stamped '18ct' and 'PT', (*jade untested for treatment or enhancements*), *necklace length 83cm.*

£500-700

189



A DIAMOND NECKLACE OF WRIGGLE DESIGN, BY MOUSSAIEFF, the diamond line necklace set with uniform brilliant-cut diamonds, mounted in yellow precious metal stamped '750' and bearing maker's mark 'CLM', for the Moussaieff workshop mark in Geneva, with soft black leather retailer's case by Moussaieff Jewellers, *necklace length approximately 47cm.*

£3000-4000

190



A DIAMOND LINE BRACELET OF WRIGGLE DESIGN, BY KUTCHINSKY, claw set throughout with brilliant-cut diamonds, mounted in yellow precious metal and bearing Kutchinsky maker's mark, *bracelet length approximately 21cm.*

£2000-3000

191



A PAIR OF DIAMOND SET LINE DROP EARRINGS, BY KUTCHINSKY, of wobble design, claw set throughout with slightly graduating brilliant-cut diamonds, with hinged clip and post fittings, mounted in yellow precious metal, stamped 'Kutchinsky', *earrings length approximately 8cm.*

£1000-1500



192



AN 18CT GOLD DIAMOND SET BUCKLE RING, the band ring with buckle detail set with two rose-cut diamonds, partial hallmark for Chester, 1880, ring size P. £250-300

193

AN EMERALD AND DIAMOND CLUSTER RING, the oval mixed-cut emerald claw set above a tiered double cluster surround of brilliant-cut diamonds, yellow and white precious metal mounted, ring size N½. £300-500



194



A TWO STONE DIAMOND RING, the two brilliant-cut diamonds claw set in crossover mount, the shoulders set with single-cut diamonds, mounted in white precious metal, total diamond weight approximately 1.55 carats, ring size L. £800-1000

195

A FIVE STONE CABOCHON EMERALD SET RING, the five slightly graduated round cabochon emeralds with raised triangular points between, each set with a single-cut diamond, above scrolled gallery, mounted in yellow precious metal, shank stamped '750', ring size K½. £600-800



196



A YELLOW SAPPHIRE AND DIAMOND CLUSTER RING, the oval mixed-cut yellow sapphire claw set within a cluster surround of claw brilliant-cut diamonds, with pear-cut diamonds to the shoulders, mounted in white precious metal, shank stamped 'IRID PLAT', ring size J. £1800-2200

197

A LARGE CABOCHON EMERALD SET DRESS RING, the cushion-shaped cabochon emerald in foiled back collet setting between two triangular-cut emeralds, to a millegrained fretwork gallery set with graduated single-cut diamonds, mounted in white precious metal, ring size I.

£1500-2000



198



A 19TH CENTURY SWISS ENAMELLED BROOCH, CIRCA 1820s/30s, the oval painted enamel panel depicting a maiden in colourful Swiss traditional dress, comprising a floral bonnet, white chemise and corseted dress, the panel collet set within a polished tubular crossover surround, cased, brooch length 73mm. £800-1000

199

A LATE 19TH CENTURY DIAMOND AND NATURAL PEARL LINE BRACELET, the articulated bracelet composed of trios of linked collet set brilliant-cut diamonds spaced by pearls, mounted in gold and silver, clasp bearing Austro Hungarian gold assay mark, bracelet length 18.5cm, total diamond weight approximately 4.3 carats. £2000-3000



200

A DIAMOND AND ENAMEL BOW BROOCH, the tied ribbon bow set with graduated old brilliant and rose-cut diamonds and decorated with red guilloché enamel, suspending two short belcher-link chain drops with pearl terminals, mounted in gold and silver, in fitted gilt tooled case, pearls untested and unwarranted, width 31mm. £900-1200



201



A CORAL FRINGE NECKLACE, set with *coralium Rubrum* coral, the necklace set to the front with graduated round and oval coral boutons, supporting three elongated coral drops below, mounted in yellow precious metal, to a belcher-link back chain spaced with spherical coral beads, necklace length 49cm. £800-1000

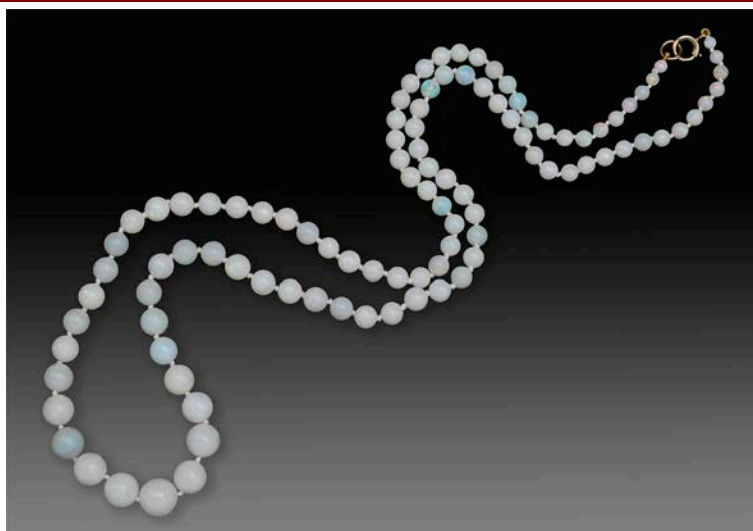
Please note coral is covered by CITES legislation and may be subject to import/export and trade restrictions.

202



A FRENCH 19TH CENTURY FLORAL ENAMELLED GOLD BROOCH, CIRCA 1830s, of shaped rectangular outline, centrally decorated with colourful enamelled flowers and foliage, within scrollwork border, pin bearing lozenge maker's mark, with unassociated gilt tooled brown leather box, brooch length 4.8cm. £400-500

203



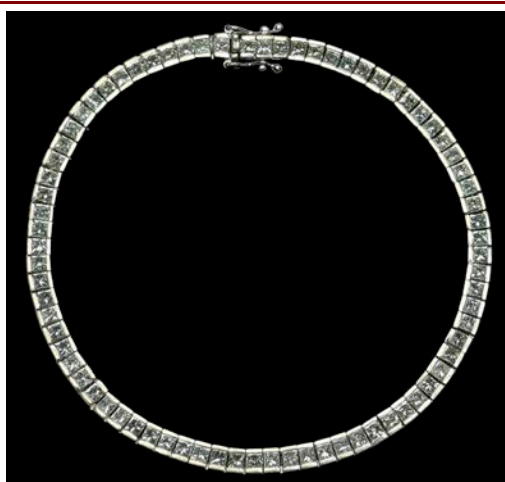
AN OPAL BEAD NECKLACE, the single row of graduated spherical opal beads on knotted silk, to a plain ring bolt clasp stamped '9ct', necklace length 73cm. £600-800

204



A SAPPHIRE AND DIAMOND PENDANT, the articulated pendant composed of two brilliant-cut diamonds and a round-cut sapphire all claw set above polished hoop mounts in white precious metal, on bifurcated bale, suspended from a silver box-link chain, *pendant length 32.5mm, total diamond weight approximately 0.4 carats.* **£300-500**

205



A PRINCESS-CUT DIAMOND TENNIS BRACELET, the articulated line bracelet composed of individually channel set princess-cut diamonds, mounted in 18ct white gold, clasp bearing partial hallmark and maker's mark 'A.T.Ld', *bracelet length 19cm, total diamond weight approximately 6-7 carats.* **£2000-3000**

206



A SAPPHIRE AND DIAMOND SET BRACELET, CIRCA 1960s/70s, the slightly tapered, bark textured brick-link strap bracelet centred with a line of raised claw set graduated alternating brilliant-cut diamonds and round-cut sapphires, clasp stamped '750' and '102' and bearing maker's mark 'HP', *bracelet length 18.5cm.* **£600-800**

207



A PAIR OF DIAMOND SET EARCLIPS, the openwork shaped clips accented with trios of claw set brilliant-cut diamonds, mounted in white precious metal, the clip fittings stamped '750' and bearing maker's mark, *earclip length 21mm, total diamond weight approximately 0.72 carats.* **£300-500**

-
- 208** A SAPPHIRE AND DIAMOND RING, the central cushion-cut sapphire collet set, within a bowed marquise-shaped surround, pavé set with old-cut diamonds, to pierced setting, yellow precious metal mounted, ring size N. £600-800



-
- 209** AN EMERALD AND DIAMOND OVAL CLUSTER RING, the oval mixed-cut emerald within a surround of brilliant-cut diamonds, all claw set to basket mount, shank hallmarked for 18ct gold, ring size N½. £2000-2200



210



AN **RAF SWEETHEARTS PANEL BRACELET**, composed of openwork rectangular links supporting RAF wings motifs, spaced by engine-turned panel links, clasp stamped 'PPLd, 9ct', bracelet length 18.5cm. £250-300

211



REGIMENTAL INTEREST: A DIAMOND AND ENAMEL BROOCH FOR THE SEAFORTH HIGHLANDERS OF CANADA, the badge with rose-cut diamond set stag head and letter 'L' and enamelled banner and crown surmount, brooch length 4cm. £300-400

The Seaforth Highlanders of Canada is a Primary Reserve infantry regiment of the Canadian Army based in Vancouver, British Columbia.

The motto '*Cuidich 'n Righ*' translates as 'Aid the King' in Scottish Gaelic.

212



AN **IMPERIAL SOCIETY OF KNIGHTS BACHELOR LADY'S BROOCH**, BY ASPREY & GARRARD, 18ct white gold mounted, the central red enamelled panel applied with diamond set coronet pierced by an enamelled sword, within diamond set radiating border, hallmarked for Birmingham, 2000, with Asprey & Garrard box, width 2.2cm. £300-500

- 213** **REGIMENTAL INTEREST:** A PAIR OF 9CT GOLD CUFFLINKS ENGRAVED WITH CREST FOR SEAFORTH HIGHLANDERS, the polished oval panel terminals with chain link connections, hallmarked and bearing maker's mark 'C&F' for Cropp & Farr, length 19mm. £100-150

The Seaforth Highlanders (Ross-shire Buffs, The Duke of Albany's) were a line regiment in the British Army from the Northern Highlands of Scotland. They existed from 1881-1861.



- 214** A PAIR OF 18CT GOLD AND CABOCHON SAPPHIRE CUFFLINKS, the fanned circular panel terminals with collet set cabochon sapphire centres, hallmarked for 18ct gold and bearing pseudo mark for Cartier, to belcher-link chain connections and plain circular panel backs, terminal diameter 16mm. £400-600



- 215** A PAIR OF GEM SET BATON CUFFLINKS, BY BOUCHERON, the swiveling square section baton terminals with geometric texturing, set to one side with step-cut sapphires and the other with step-cut citrines, to hinged geometric textured baton backs, mounted in 18ct yellow gold, signed and stamped 'BMCo', with French eagle's head assay marks and UK import marks, and inscribed 'C.B.H' and '15.6.68', baton length 19mm. £800-1000



- 216** A PAIR OF LAPIS LAZULI AND DIAMOND INSET CUFFLINKS, the graduated octagonal lapis lazuli panels with bevelled edges, each centered with a collet set single-cut diamond, collet set in silver and silver gilt mounts, with ropetwist border, to belcher-link chain connections. £200-250



217



The following two lots are from the collection of Lord Curzon, (1859-1925), Viceroy of India between 1899-1905, and thence by family descent.

A GEORGIAN GREEN/BLUE PASTE SUITE, comprising a pear-shaped single stone pendant, and a bracelet, brooch and earclips of lozenge-shaped stones accented with pairs of smaller similar stones, all mounted in foiled closed back pinched collet gilt metal settings, brooch and earclips adapted, bracelet and pendant with later fittings, *bracelet length 19.5cm.* **£1000-1500**

© Alamy





218 A SIX ROW CULTURED PEARL COLLAR NECKLACE WITH DIAMOND CLASP, the clasp set with an early 20th century diamond rectangular panel of cushion-cuts, old-cuts and rose-cut diamonds, millegrain edged, the panel applied to a later framework, claw mounted, between six slightly graduating rows of uniform cultured pearls spaced with four diamond set vertical bars, *dimensions of clasp 2.9mm x 2.6mm, length approximately 34cm.* £2500-3500



219



A THREE ROW UNIFORM CULTURED PEARL NECKLACE, the three rows of pearls to a small polished rectangular clasp in yellow precious metal, together with two loose yellow precious metal adjuster fittings, bearing Mikimoto maker's marks, average pearl diameter approximately 6mm, necklace length 38cm. £600-800

220



A PAIR OF CULTURED PEARL SET EARCLIPS, each modelled as a foliate spray of cultured pearls with textured yellow precious metal leaves, to clip fittings, stamped '14k', earclip length 25mm. £250-300

221

A PAIR OF DIAMOND AND CULTURED PEARL EARPENDANTS, each with bow surmount set with old-cut and rose-cut diamonds (some stones missing), with an articulated row of collet set rose-cut diamonds below, and cultured pearl terminals, on later post fittings, length 4cm. £400-500





AN ITALIAN TWO COLOUR 18CT GOLD CULTURED PEARL AND DIAMOND SET SUITE, comprising a necklace, ring and earrings, the collar necklace composed of overlapping graduating heart motifs of alternating white and yellow gold, the front section pavé set throughout with brilliant-cut diamonds, and spaced above by collet set brilliants, with graduating cultured pearls beneath diamond set caps, the heart-shaped links polished towards the back, and with diamond set push clasp, the matching earrings of conforming design, with hinged clip and post fittings and a crossover style dress ring, each stamped 'ITALY 18k 750' with maker's marks, necklace length approximately 38.5cm, earrings length 3.7cm, ring size N1/2.

£6000-8000

223



AN ART DECO DIAMOND AND PEARL SET BAR BROOCH AND A SET OF THREE PEARL DRESS STUDS, the narrow bar brooch set with a pearl and old brilliant and rose-cut diamonds, the studs each set with a pearl, to yellow gold screw back fittings, stamped '9ct', in gilt tooled case signed by Koch jewellers, *all pearls untested and unwarranted, bar brooch length 49mm.* £200-300

224



A PAIR OF GEM SET CUFFLINKS, the circular panel terminals with brushed finish each inset with three baguette-cut blue stones around central millegrained collet set brilliant-cut diamond, mounted in white precious metal, the four panels stamped to the reverse 'GRET'L', '7', '37' and 'VII' respectively, adapted from buttons, with later swivel clasp connections, *panel diameters 13.5mm.* £600-800

225

A PAIR OF CHALCEDONY CUFFLINKS, the square reeded domed chalcedony panels to central collet set cabochon emeralds, with belcher-link chain connections to polished chalcedony baton terminals. £100-120



226



A PAIR OF 9CT GOLD CUFFLINKS AND A GEM SET BROOCH, the cufflinks with monogrammed oval panel terminals, to chain-link connections, hallmarked and bearing maker's mark 'A&W', cased; the brooch modelled as a spray of mistletoe, set throughout with rose-cut diamonds and accented with pearls (*one pearls untested, one lacking, and one diamond lacking*), together with a further costume jewellery brooch in the form of a penguin. £100-150

227



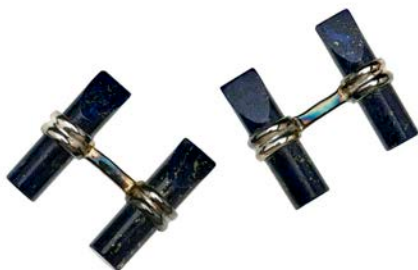
A 9CT GOLD SWIVEL STICK, engine-turned and hallmarked, together with a cased set of six grey mother o' pearl waistcoat buttons in gilt metal mounts, and a gentlemen's white mother o' pearl dress set, mounts stamped 'silver', in Moss Bros' case. £120-180

228

A PAIR OF 18CT GOLD AND PLATINUM CUFFLINKS, the tonneau-shaped panel terminals set with polished onyx within millegined rose-cut diamond set borders, to belcher-link chain connections, the mounts stamped '18ct & pt', one cufflink inscribed '1923' to the reverse of one panel and '1933' to the other, in a signed Hunt & Roskell case, *panels measure 12.5mm x 11mm.* £600-800



229



A PAIR OF LAPIS LAZULI BATON CUFFLINKS, the cylindrical lapis lazuli batons each tapered to one end, in white precious metal mounts, stamped '925'. £60-80

230

A PAIR OF ART DECO STYLE RUBY AND EMERALD SET CUFFLINKS, the terminals modelled as square hoops of channel set calibr -cut rubies or emeralds, accented with a contrasting square sugar-loaf cabochon stone, mounted in yellow gold, with belcher-link chain connections, cased signed Bulgari, *terminals measure 9.5mm x 9.5mm.* £1200-1500



231



AN EARLY 19TH CENTURY MEMORIAL LOCKET, the shaped locket centred with a circular enamel panel applied with a rose-cut diamond set forget-me-not spray, to a textured ground and black enamel border, the reverse with central glazed hairwork panel surrounded by inscription reading 'To remember dear "Uncle Conny", ob Feby 16 1831', (sic) to plain suspensory loop and suspended on a curb-link chain necklace, stamped '9ct', pendant width 23mm. **£100-150**

232

A 19TH CENTURY MEMORIAL LOCKET, the hinged locket glazed front and back, the front displaying a painted ivory panel depicting a gentleman in a blue frock coat and black top hat seated in front of a memorial inscribed 'Nelson', the panel within a reverse painted blue and gilt border, in gilt metal mount, suspended from a blue enamelled ribbon bow brooch, length of locket, including brooch fitting, 78mm. **£300-400**

Please note ivory is covered by CITES legislation and may be subject to import/export and trade restrictions.



233



TWO 19TH CENTURY BLUE ENAMEL BROOCHES, the first applied with a seed pearl and diamond flower motif, within a shaped gold border, the second similarly decorated, with a diamond set floral spray, within half pearl border. **£100-200**

234

A 19TH CENTURY GOLD MEMORIAL LOCKET, the round engine-turned hinged locket pendant with lad hairwork panel within, inscribed to the inside 'Dame Pooley Drake, Obt 12 Decr 1822, at 64', pendant diameter 22mm. **£100-150**

Dame Pooley Drake, daughter of George Onslow, M.P. for Guildford, was the second wife of **Sir Francis Samuel Drake**, 1st Baronet (1729 – 1789). An officer of the Royal Navy, Sir Francis Samuel Drake (a descendent of the Elizabethan naval hero Sir Francis Drake) served during the Seven Years' War and the American War of Independence, rising to the rank of Rear-Admiral of the Red.



235 A MEMORIAL HAIRWORK BRACELET FOR COPENHAGEN, THE CHARGER OF THE DUKE OF WELLINGTON, the plaited hair bracelet with engine-turned rectangular gold panel clasp, the reverse inscribed 'From the Mane of the Charger COPENHAGEN which carried the DUKE OF WELLINGTON 18 successive hours on the 18th June 1815', The Battle of Waterloo', length 18.5cm. £800-1200

Copenhagen (1808-1836) was the Duke of Wellington's war horse, which he famously rode at the Battle of Waterloo in 1815. Of mixed thoroughbred and Arabian parentage and a former race horse, Copenhagen was sent to Spain with Sir Charles Vane in 1813, and was then sold to the Duke of Wellington and was to become his favourite horse.

Wellington rode Copenhagen in a number of battles, most famously the Battle of Waterloo and continued to ride him in parades and ceremonial events afterwards.

The horse was retired to the Duke's estate Stratfield Saye House, and lived there for the remainder of his life, dying at the age of 28 years. On the marble headstone of Copenhagen's grave, were the words inscribed: 'God's humbler instrument though meaner clay should share the glory of that glorious day'



© Alamy



*From the Mane
of the Charger
COPENHAGEN!
which carried the
DUKE OF WELLINGTON,
18 successive Hours
on the 18. June. 1815.
The Battle of Waterloo.*

236



AN EARLY 20TH CENTURY DIAMOND AND SYNTHETIC RUBY PENDANT, the pendant modelled as a ribbon swag with bow terminals, millegrain set throughout with graduated rose-cut diamonds and accented with calibre-cut synthetic rubies, around central old brilliant-cut diamond, suspending two articulated drops below, set with rose-cut diamonds, to old brilliant-cut diamond terminals, gold and silver mounts, to a later curb-link chain, *pendant length 60mm*. **£400-600**

237

AN EDWARDIAN PEARL AND DIAMOND PENDANT AND A PAIR OF DIAMOND EARTUDS, the foliate hoop pendant with textured leaves and tiny seed pearl accents, around central claw set diamond drop, with foliate drop below with freshwater pearl terminal, mounted in yellow precious metal, suspended on a fine belcher-link chain necklace, together with a pair of earstuds, the old brilliant-cut diamonds claw set in yellow gold, to screw back stud fittings, *pendant length 41mm*, *earstuds total diamond weight approximately 0.25 carats*. **£200-300**



238



AN INDIAN GEM SET PENDANT, the round pendant set with cabochon rubies and lasqué and table-cut diamonds in foiled back settings, suspending three cultured pearl drops below, mounted in yellow precious metal, on black cord, *rubies untested*, *pendant length 31mm*. **£150-200**

239



AN EGYPTIAN YELLOW PRECIOUS METAL LONG ROPETWIST CHAIN NECKLACE, the uniform chain to box clasp with Egyptian marks, *chain length 93cm.* £3800-4400

240

A DIAMOND SINGLE STONE PENDANT, the brilliant-cut diamond in a pear-shaped polished 18ct yellow gold mount, suspended on a flattened curb-link chain, chain and pendant bearing UK import marks and European convention marks, *diamond approximately 0.3 carats, necklace length 45cm.* £150-200



241



A DIAMOND SET LARIAT NECKLACE, the fox-tail-link chain with matt finished leaf-shaped hoop and panel terminals, the panel inset with two small brilliant-cut diamonds, mounted in yellow precious metal, stamped '750', together with a single stud earring of corresponding design, *total chain length 53.5cm.* £300-400

242

A VICTORIAN GARNET SET BRACELET, the snake-link chain bracelet suspending an oval locket pendant drop set with an oval cabochon garnet, the locket with glazed panel verso and floral engraved detail, all mounted in yellow gold, *bracelet length 20.5cm.* £350-400





AN ITALIAN 19TH CENTURY CASED CORAL SUITE, CIRCA 1840s-60s, comprising a necklace, bracelet and brooch, composed of carved *coralium Rubrum* chrysanthemum flowerheads, foliage and fruit/seeds, the necklace and brooch supporting trios of drops below, the necklace centrepiece to three rows of uniform beads, the bracelet to gate-link coral bracelet, with a matching pair of earpendants, all with yellow gold mounts, in shaped fitted case, *necklace length 47cm.* £3000-5000

Please note coral is covered by CITES legislation and may be subject to import/export and trade restrictions.



244



A COLLAR NECKLACE, the matt and polished links of stylized plaited ribbon design, clasp stamped '375' for 9ct gold, necklace length 43cm. £200-300

245



A 9CT GOLD SOLID CURB-LINK BRACELET, hallmarked, to a heart-shaped padlock clasp suspending a Victoria two pound coin, on soldered pendant mount, bracelet length 18.5cm. £1000-1200

246

A VICTORIAN GOLD CURB-LINK BRACELET AND A PAIR OF AMETHYST EARRINGS, the hollow curb-link bracelet links stamped '9', to heart-shaped padlock clasp, the earrings with oval mixed-cut amethyst set drops, mounted in yellow precious metal, to stud fittings, bracelet length 18.5cm. £100-150



247



A 19TH CENTURY GOLD ARCHAEOLOGICAL REVIVAL RAM'S HEAD HINGED BANGLE, CIRCA 1860-1870s, the Etruscan styled bangle with ram's head finely modelled with curling horns and textured fleece, the bangle decorated throughout with applied granulation and ropetwist detail, incorporating scrolls and anthemion designs, unsigned, *inner diameter 5.8cm.* **£3000-4000**

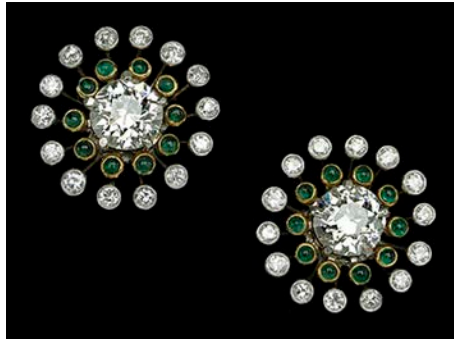
A similar bangle is in the Victoria & Albert Museum collections, Case 20; Board H; No 15, catalogued as '*Italian or English, about 1860-1870. Given by Miss H M Jenkins, a friend of the Novissimo family, who ascribed it to Pasquale Novissimo*'; ref M13-1956. And another in the British Museum collections, Gallery 47, dc: 11, ref: 1978,1002.1050.

See:

Bury, S., *Jewellery Gallery Summary Catalogue*, Victoria and Albert Museum, 1982, pp. 127 and 133.

Gere, C. et al., *The Art of the Jeweller: A Catalogue of the Hull Grundy Gift to the British Museum*, British Museum Press, 1984, Volume II: p. 243, no. 958, and Volume I: pp. 148-149.

248



A PAIR OF DIAMOND AND EMERALD EARSTUDS, the central old brilliant-cut diamonds claw set, within inner surrounds of spaced collet set cabochon emeralds and outer surrounds of similarly set brilliant-cut diamonds, mounted in yellow and white precious metal, to later stud fittings, *total weight of principal old brilliant-cut diamonds 2.05 carats, earstud diameter 16.5mm.* £2500-3000

249



A DIAMOND RECTANGULAR PANEL BROOCH, the millegrained open fretwork panel of floral and foliate design set throughout with graduated old brilliant and single-cut diamonds, mounted in white precious metal, *brooch length 47mm.* £800-1200

250



A LATE 19TH CENTURY GOLD AND SILVER MOUNTED EMERALD AND DIAMOND BROOCH, the pierced scrolling design set throughout with old-cut and single-cut diamonds with emerald highlights, *length 6cm.* £260-300

- 251** A DIAMOND AND PEARL THREE ROW CHAIN BRACELET, the three rows of elongated millegrained openwork links and highlighted with seed pearls and millegrained collet set brilliant-cut diamonds between, mounted in white precious metal, *bracelet length 16.5cm.* £600-800



252



- AN ART DECO DIAMOND AND LAPIS LAZULI SET BROOCH, the rectangular brooch with split border in domed lapis lazuli and central frosted glass panel, the openwork detail millegrain set with single-cut diamonds and with central octagonal-cut diamond, mounted in yellow precious metal, stamped '585' and bearing maker's mark 'R&F', (*lapis damaged to one corner*), length 40cm. £500-700

- 253** AN EDWARDIAN DIAMOND AND EMERALD PANEL RING, the rectangular grille panel within a millegrained single-cut diamond set border, supporting a central step-cut emerald between two old brilliant-cut diamonds, collet set, to millegrained single-cut diamond set shoulders, mounted in white precious metal, *ring size P, total weight of principal old brilliant-cut diamonds 1.2 carats.* £2000-3000





A 19TH CENTURY GOLDEN TOPAZ AND DIAMOND TIARA/NECKLACE AND BROOCHES SUITE, cased, the necklace composed of graduated oval mixed-cut topaz in foiled closed back gold pinched collet link mounts, with pinched collet set silver and gold mounted graduated quatrefoil links between, set with old brilliant and rose-cut diamonds, with a detachable pendant drop, centred with a cushion-shaped topaz within a foliate surround set with graduated old brilliant-cut diamonds, the cluster having a detachable diamond set ribbon bow pendant surmount and detachable brooch fitting, with two smaller matching clusters each with rose-cut diamond surrounds and detachable brooch fittings, all converting together into a tiara, in fitted green leather gilt tooled case, signed 'Parkes, 5 Vigo Street, Regent Street, W', necklace length 36cm, larger cluster length 26mm. £8000-10000




PARKES,
5, VIGO STREET,
REGENT STREET,
W.

255



TWO 19TH CENTURY CAMEO BROOCHES, the first of conch shell, carved to depict a bacchante in a headdress of fruiting vines, the second of lava, carved to depict Calliope, the muse of epic poetry, holding a trumpet and a tablet; both collet set in plain gold mounts, *lengths 47mm and 43mm respectively.* £200-300

256



TWO SAPPHIRE SET RINGS, the first an Edwardian ring, the central mixed-cut sapphire between trios of old brilliant-cut diamonds, to scrolled shoulders, mounted in 18ct yellow gold, shank hallmarked; the second set with a mixed-cut sapphire within a cultured pearl cluster surround, mounted in yellow precious metal, *ring sizes O and K½ respectively.* £300-400

257

AN AQUAMARINE AND DIAMOND HALF HOOP RING, the line of five rectangular step-cut aquamarines with borders of small claw set brilliant-cut diamonds around and between them, mounted in white precious metal, *stamped '750', ring size O.* £150-200



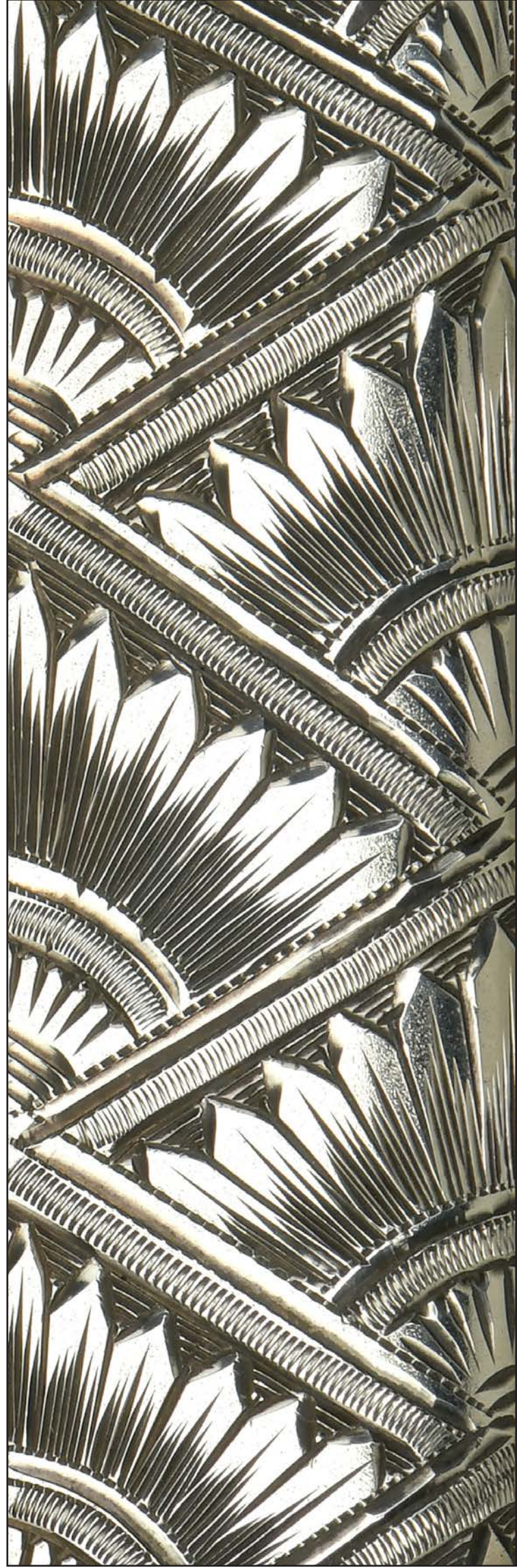
258



A LATE 19TH/EARLY 20TH CENTURY CORAL AND DIAMOND RING, the five graduated oval *corallium Rubrum* coral cabochons with pairs of collet set rose-cut diamond points between, mounted in yellow precious metal, *ring size M½.* £100-150

Please note coral is covered by CITES legislation and may be subject to import/export and trade restrictions.

Objects of Vertu



Objects of Vertu

A Private Collection of Silver Card Cases

259



A VICTORIAN SILVER CARD CASE, BY HILLIARD & THOMASON, of shaped rectangular form with hinged lid, with engraved geometric and scroll decoration throughout, hallmarked for Birmingham, 1882 and bearing maker's mark 'H&T', in gilt tooled leather case, *dimensions 9.9cm x 7.1cm.*

£250-300

260



A VICTORIAN SILVER CARD CASE, of shaped rectangular form with hinged lid, with geometric and scroll decoration throughout, hallmarked for Birmingham, 1864 and bearing maker's mark 'D&M', *dimensions 10.1cm x 7.3cm.*

£120-160

261



AN AESTHETIC MOVEMENT SILVER CARD CASE, BY BARNET HENRY JOSEPH, the rectangular case with hinged lid, the body with bloomed finish engraved with scenes of birds alighting on flowering branches, with vacant circular reserve, to stylized borders, hallmarked for Chester, 1886, and bearing maker's mark 'B.H.J.', in fitted gilt tooled leather case, *dimensions 10.1cm x 7.4cm.*

£250-300



262



AN EARLY VICTORIAN SILVER CARD CASE, BY NATHANIEL MILLS, the shaped rectangular case with hinged lid, with engine-turned decoration to scrolled borders and a central scroll bordered cartouche containing a pastoral scene with figures, hallmarked for Birmingham, 1847, and bearing maker's mark 'N.M', dimensions 10cm x 7.1cm. £250-300

263



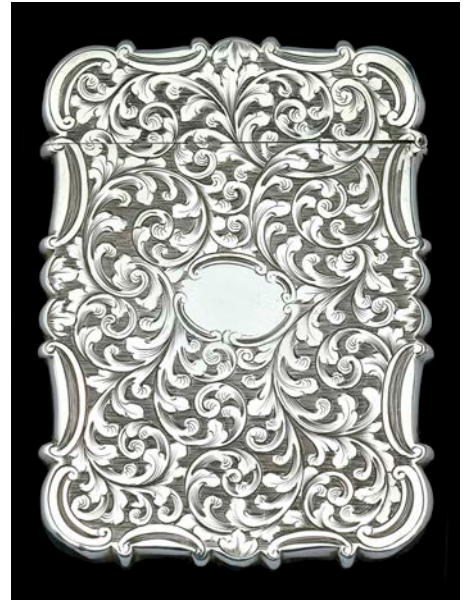
A VICTORIAN SILVER CARD CASE, BY NATHANIEL MILLS, the shaped rectangular case with hinged lid, with engine-turned decoration and scrolled borders and central vacant cartouche, hallmarked for Birmingham, 1851, and bearing maker's mark 'N.M', dimensions 10cm x 7.2cm. £250-300

264

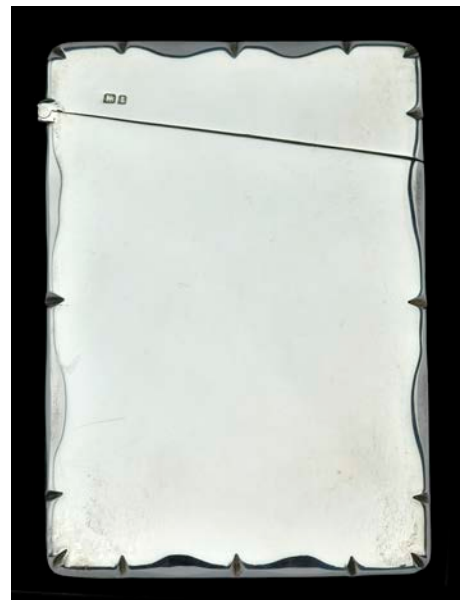


AN EDWARDIAN SILVER CARD CASE, BY WILLIAM NEALE & SONS, the shaped rectangular case with hinged lid, decorated with embossed repoussé scrolls against textured ground, to central vacant polished cartouche, hallmarked for Chester, 1903 and bearing maker's mark 'W.N', dimensions 9.9cm x 6.9cm. £120-150

- 265** AN EARLY VICTORIAN SILVER CARD CASE, BY NATHANIEL MILLS, of shaped rectangular form with hinged lid, with engraved scroll decoration throughout and with central vacant oval reserve, hallmarked for Birmingham, 1841 and bearing maker's mark 'N.M', *dimensions 10.1cm x 7.3cm.* £250-300



- 266** AN EDWARDIAN SILVER CARD CASE, of plain polished rectangular form with hinged lid and slight pie-crust detailing to edges, hallmarked for Chester, 1905, and bearing maker's mark 'S.L.Ld', *dimensions 10.3cm x 7.1cm.* £120-150



- 267** A LATE VICTORIAN SILVER CARD CASE, BY WILLIAM NEALE, the polished rectangular case with hinged lid, embossed and engraved with the head of a winged cherub amidst clouds, within an embossed scroll border and with similar scroll details to the corners, hallmarked for Chester, 1899, and bearing maker's mark 'W.N', *dimensions 10.4cm x 7.6cm.* £120-150





A SET OF FOUR VICTORIAN SILVER GILT CIRCULAR DINNER PLATES, with gadrooned rims, each engraved to the rim with the coat of arms of Thomas George Baring, Earl of Northbrook, hallmarked for London, 1872, with maker's mark for Barnard & Sons Ltd (John, Edward, Walter & John Barnard), the reverse stamped with retailer's mark 'THOMAS, NEW BOND STREET' and bearing inventory numbers 81, 117, 134 and 169, *diameter 25cm, gross weight 87oz.* **£3000-5000**

Provenance: The arms are those of BARING, as borne by the Earls of Northbrook.

Thomas George Baring, 2nd Baron Northbrook, 1st Viscount Baring of Lee and 1st Earl of Northbrook, 1826-1904, was the eldest son of Sir Francis Baring, 1st Baron Northbrook, whom he succeeded as 2nd Baron in 1866. From 1857-1866, he was an MP and served as a Lord of the Admiralty (1857-58), Under-secretary for War (1861) and for India (1861-1866) and Secretary to the Admiralty (1866). In 1868, under Gladstone as Prime Minister, he again became Under Secretary for War, until 1872, when he was appointed Governor General and Viceroy of India, Governor of the Most Exalted Order of the Star of India. He resigned in 1876 over a policy difference with the Secretary of State for India, the Duke of Argyll.

In 1876 he was made Earl of Northbrook. He was succeeded in 1904 by his son, 2nd Earl Northbrook but the title has now lapsed.

Ambassadorial and Viceregal ceremonial plate was supplied by the State, but was usually retained by the holder on retirement.

See: Lot 84, Sale 2591, 19th October 2012, Christie's New York, a set of 12 dinner plates from the same ceremonial dinner service.



Viceroy of India Thomas George Baring 2nd Baron Northbrook (centre) at Simla, 1872

© Getty Images



269



A SILVER VISITING CARD CASE AND A SILVER VESTA CASE, the first with hinged lid and scrolled foliate engraved decoration throughout, hallmarked for Chester, 1900, and bearing maker's mark 'W.A', the vesta case partially scroll engraved and initialled, hallmarked for Birmingham, 1905, suspended on a silver curb-link Albertina, *visiting card case dimensions 8.6cm x 5cm.* £100-120

270

AN EARLY 20TH CENTURY FRENCH SILVER ENGINE-TURNED SNUFF BOX, the rectangular box with hinged lid, with engine-turned decoration, bearing French lozenge maker's mark. *length 8.3cm.* £100-200



271



A POLISH SILVER TRIANGULAR COMPACT, the hinged lid applied with sun ray motif and three collet set amber cabochons, bearing post 1963 hallmark for '800' standard and a post 1963 re-marking circular punch, and stamped 'OR NO', together with a square compact, the hinged lid inset with a rectangular amber panel with canted corners, the case engine-turned throughout, stamped '835 (?) (indistinct), enclosing mirror (cracked), (amber untested), *first length 6.5cm, second 6.8cm square.* £200-250

272



A **9CT GOLD RECTANGULAR VESTA CASE**, with repeating weave design, and attached suspension loop, maker's mark 'JHW', hallmarked for Birmingham, 1926, length 4.3cm. £140-160

273



A **FRENCH GOLD CIGARETTE LIGHTER**, the osier design case with polished terminals, bearing French eagle's head assay mark and lozenge maker's mark, together with a steel cigar cutter, signed Dunhill. £300-500

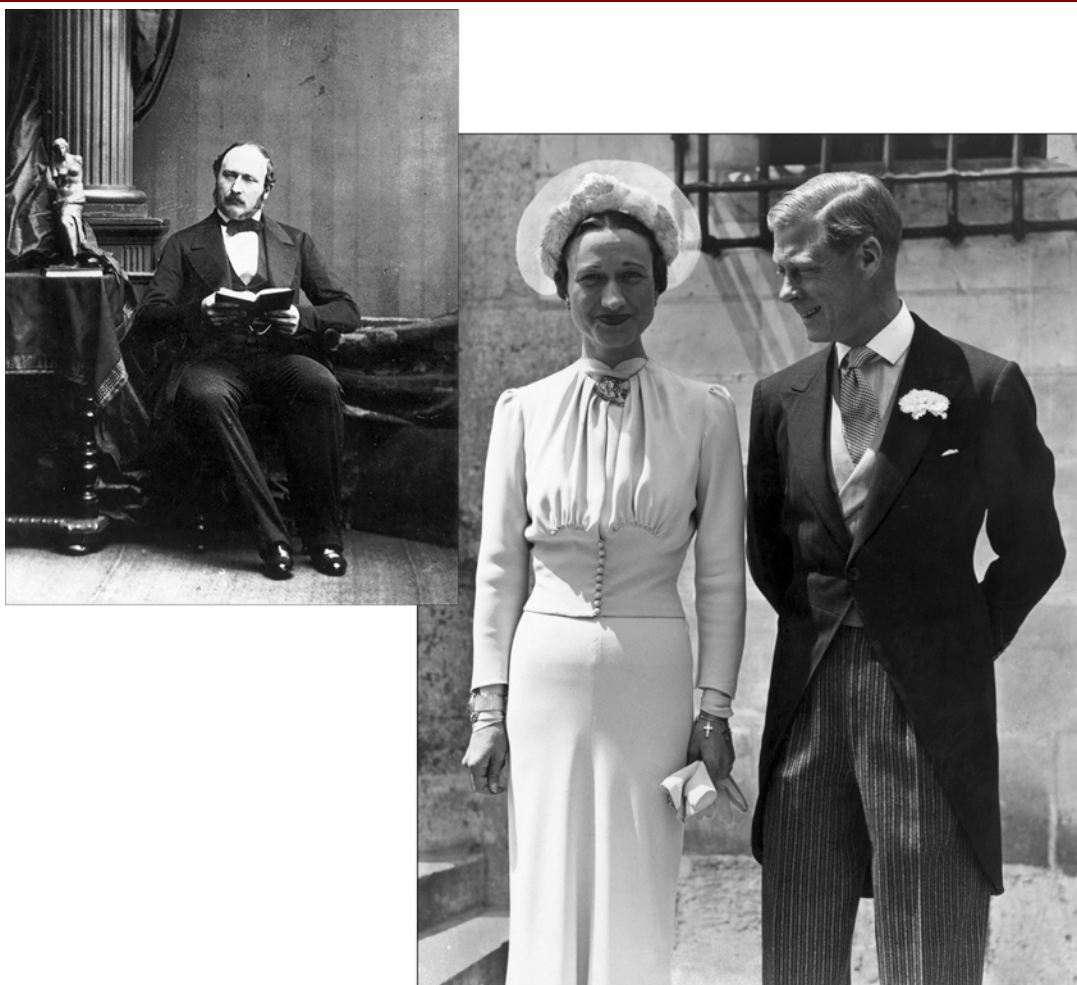
274



A **FRENCH SILVER GILT POWDER COMPACT AND LIPSTICK HOLDER SET**, the osier design hinged rectangular compact, with cabochon blue stone push button and interior mirror, both bearing French lozenge-shaped maker's marks and both in black suedette travel pouches. £100-150

From the Collection of the Duke and Duchess of Windsor

275



FROM THE PRIVATE COLLECTION OF THE DUKE AND DUCHESS OF WINDSOR: A 19TH CENTURY GOLD MOUNTED BLOODSTONE DESK SEAL, FORMERLY THE PROPERTY OF PRINCE ALBERT, the flared faceted bloodstone handle above a banded gold mount, the lobed base inset with a bloodstone matrix engraved with the arms of *Prince Albert of Saxe-Coburg and Gotha*, encircled by the garter and with coronet surmount, *length 8.9cm.* **£5000-7000**

Provenance:

From: *The Collection of the Duke and Duchess of Windsor*, sold at auction at Sotheby's New York, scheduled for 11th-19th September 1997, (auction took place in February 1998), Sale Number 7000, lot 1264, sold for \$31,000 (inclusive).

With the death of the Duke of Windsor in 1972, the Duchess remained at their Parisian home, **4 route du Champ d'Entraînement**, a Louis XVI-style villa on the fringes of the Bois de Boulogne, until her own death in 1986. The villa had been leased to the Windsors by the City of Paris in 1952 and the contents assembled by the Duke and Duchess, with the help of Stéphane Boudin of Maison Jansen, the Parisian decorators. After the Duchess' death, the villa was returned to the City of Paris, and the contents to the Pasteur Institute, the principal beneficiary of the Duchess' estate. Later that year, Mohamed al-Fayed, the Egyptian-born financier, signed a fifty year lease on the villa and purchased the contents from the Pasteur Institute.

Over the next few years, Mr Fayed extensively restored and refurbished what he called the *Villa Windsor* and had the entire contents of the house, which had been neglected during the Duchess' last years, researched and a permanent record of the collection made. In July 1997, Mr Fayed announced that an auction of the Duke and Duchess of Windsor's possessions from the villa would take place in New York later that year.

Events took a tragic turn with the deaths of Al-Fayed's son Dodi and Diana, Princess of Wales on 31st August 1997 and the Sotheby's auction - scheduled to take place in Manhattan over a series of days between 11th-19th September, was postponed as a mark of respect, eventually selling the following February, with more than 40,000 items for sale, including the 'abdication desk' at which King Edward VIII signed his abdication in 1936, before becoming the Duke of Windsor. The proceeds of the auction went to the Dodi Fayed International Charitable Foundation and causes associated with the late Princess of Wales.



276



A SET OF TRAVELLING JEWELLER'S SCALES, the brass scales and stand with 5mg -10gm weights and a pair of tweezers, all in wooden travelling case.

£30-40

277

A MECHANICAL PENCIL BY DUNHILL AND AN INK PEN BY SHEAFFER, the pencil with engine-turned body, signed and stamped 'Made in England, 9ct', the fountain pen, signed and stamped '12k GF'.

£120-160



278



A 9CT GOLD TWIN SOVEREIGN CASE, with engine turned ribbed decoration, with attached suspensory loop, maker's mark WN Ltd, hallmarked for Chester 1913, length 5.6cm (excluding suspensory loop). £350-450

Watches



Watches

- 279** A LADY'S 9CT GOLD WRISTWATCH, BY BEUCHE GIROD, the small signed cream dial with applied gilt baton hour markers, signed jewelled movement, case hallmarked, with bark textured bezel, to integral textured brick-link bracelet strap, *wristwatch length 15.5cm.* £180-220



- 280** A LADY'S 9CT GOLD WRISTWATCH, BY OMEGA, the textured square cushion-shaped gilt dial signed and with applied baton hour markers, signed jewelled movement, case signed and bearing Swiss marks, with polished bezel, to cabochon tiger's eye quartz set crown and integral tapered woven-link bracelet strap, clasp signed and stamped '375', *wristwatch length 17cm.* £200-300



- 281** A DIAMOND SET COCKTAIL WATCH, BY SAKATA, the signed circular silvered dial with applied dart hour markers, jewelled movement, case stamped '18k, 750', the bezel composed of small single-cut diamonds in raised square claw settings, with stripes of similarly set diamonds to the shoulders, to integral textured mesh-link bracelet strap, together with a 9ct gold cased lady's wristwatch by Rotary, with oval dial and open gate-link bracelet strap, case and clasp hallmarked. £400-600



282



AN 18CT GOLD LADY'S WRISTWATCH, BY HERMÈS, with signed plain black enamel dial, jewelled movement, the rectangular case with geometric engraved pattern, bearing Swiss marks and UK import marks, to a signed green leather strap with signed gilt buckle clasp, *dial length 17mm.* **£400-600**

283



A LADY'S CALENDAR SPORTS WATCH, BY BULGARI, the signed silvered dial with black baton hour markers and Arabic numerals, with date aperture at numeral 3, signed quartz movement, the brushed aluminium case with signed black bezel, the black case back signed and numbered 'AL 32TA M 75221', to a black rubber strap with articulated shoulders and signed clasp, *dial diameter 23mm.* **£300-500**

A Private Collection of Pocket Watches

Lots 284-292



284

A SILVER OPEN FACED POCKET WATCH, BY FRANCIS MOORE, DUBLIN-BELFAST, the white enamel dial signed and numbered '5685', with black Arabic numerals and subsidiary seconds dial, the freesprung $\frac{3}{4}$ plate movement similarly signed and numbered, the plain polished case hallmarked for London, 1881 and stamped GJT, together with a short curb-link silver Albertina, cased, watch diameter 51mm. £200-300

285

A SILVER CASED HALF HUNTER POCKET WATCH, BY SIR JOHN BENNETT, LONDON, the signed white enamel dial with black Roman numerals and subsidiary seconds dial, blued steel hands, the $\frac{3}{4}$ plate movement signed and numbered '13039', the plain polished case with blue enamel chapter ring and signed cuvette, hallmarked for London, 1897, watch diameter 52mm.

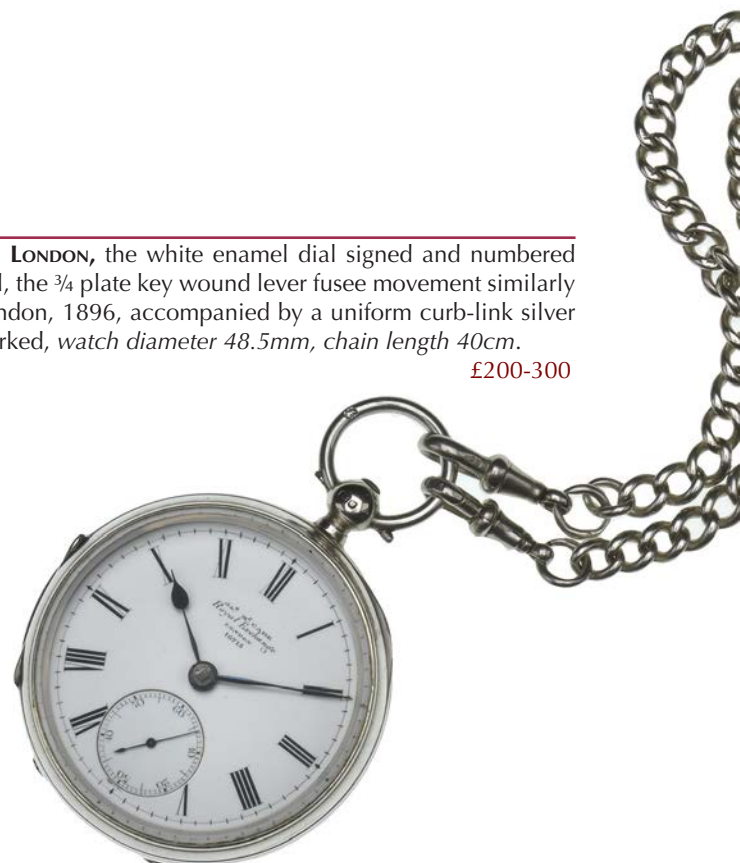
£150-200



286

A SILVER OPEN FACE POCKET WATCH, BY JAMES McCABE, ROYAL EXCHANGE, LONDON, the white enamel dial signed and numbered '16715', with black Roman numerals and a subsidiary seconds dial, the $\frac{3}{4}$ plate key wound lever fusee movement similarly signed and numbered, the polished silver case hallmarked for London, 1896, accompanied by a uniform curb-link silver Albert chain, with central T-bar and swivel clasp terminals, hallmarked, watch diameter 48.5mm, chain length 40cm.

£200-300



- 287** A SILVER OPEN FACED POCKET WATCH, BY FRANCIS MOORE, DUBLIN-BELFAST, the white enamel dial signed and numbered '5685', with black Arabic numerals and subsidiary seconds dial, the freesprung $\frac{3}{4}$ plate movement similarly signed and numbered, the plain polished case hallmarked for London, 1881 and stamped GJT, together with a short curb-link silver Albertina, cased, watch diameter 51mm. £200-300



- 288** A GOLD HUNTER CASED FIVE MINUTE REPEATING POCKET WATCH, BY JULES JURGENSEN, COPENHAGEN, the signed white enamel dial with black Roman numerals, subsidiary seconds dial and fine blued steel hands, the jewelled key wind movement, with chimes for hours and 5 minutes, signed and numbered '8341', the gold cuvette signed and numbered, the engine-turned case also signed and numbered, bearing maker's mark and stamped 'k18', with slide button to band to activate repeater, watch diameter 53mm. £1000-1200

- 289** AN 18CT GOLD HUNTER CASED CHRONOGRAPH POCKET WATCH, BY GABRIEL, LONDON, the signed white enamel dial with black Roman numerals and subsidiary seconds dial at numeral 6, outer 0-60 chronograph seconds scale and subsidiary chronograph minutes dial at numeral 12, with blued steel hands, top wind $\frac{3}{4}$ plate movement signed 'Gabriel, 61 Cornhill, London, Watch Maker to the Admiralty' and numbered '561/1000', the plain polished case with engraved 'J.B.' monogram to the front and chronograph push button to band, hallmarked for London, 1903 and bearing maker's mark 'F.T.', in fitted gilt tooled case, signed 'W. Gabriel', watch diameter 53mm. £2000-2500

Accompanied by a card for Dr Brown of Harvieston, Tring, hand annotated in ink 'Oct: 28th 1904, To (Dr Brown) from Lady Rothschild & Mr. Walter Rothschild' to the front and 'Gabriel, 561/1000' to the back in the same hand.

The Bucks Herald of 26th December 1914 records the funeral of Dr James Brown, which took place on 18th December, describing the event as a 'striking demonstration of the esteem and affection in which the deceased gentleman was held by all classes in the community'. The congregation present at the service, held at the Church of St Martha's, at which the doctor had been a regular worshipper, included the Hon Walter Rothschild.

Dr Brown's only son, Second Lieutenant Andrew Cranstoun Brown, of the South Staffordshire Regiment, was killed in action on the second day of the Battle of the Somme, on 2nd July 1916, aged just 21 years.



290



A **GEORGE III** GOLD PAIR CASED POCKET WATCH, BY **WILLIAM STORY, LONDON**, the white enamel dial with black Roman numerals and outer 0-60 seconds scale, and centre sweep seconds hand, the full plate cylinder escape fusee movement, signed and numbered '371', with pierced engraved balance cock and rose diamond endstone, signed gilt cuvette, the plain polished cases hallmarked for London, 1781, dial diameter 41.5mm.

£1500-2000

291



A GOLD CASED HUNTER **RIVERSIDE MAXIMUS** POCKET WATCH, BY **WALTHAM**, the signed white enamel dial with black Arabic numerals, outer 0-60 minute scale with red Arabic numerals, and subsidiary seconds dial at numeral 6, signed jewelled top wind lever movement numbered '12072691', the gold cuvette bearing presentation inscription, the engine-turned and scroll decorated case stamped '14k', watch diameter 51mm.

£600-800

292



A **THREE COLOUR** GOLD OPEN FACED POCKET WATCH, BY **ROBERT ROSKELL, LIVERPOOL**, the textured gold dial with raised polished Roman numerals and three colour gold scroll centre and border, the full plate lever fusee key wound movement with steel balance wheel signed and numbered '35501', the case with chased foliate band and engine-turned back hallmarked for Chester, 1823, from foliate chased suspensory loop, watch diameter 46.5mm.

£1000-1200



293



A STAINLESS STEEL OYSTER PERPETUAL DATEJUST WRISTWATCH, BY ROLEX, 1991, the signed silvered dial with applied baton hour markers, centre sweep seconds hand and date aperture at numeral 3, automatic movement, stainless steel case signed and numbered '16200' and 'X802728', to a signed stainless steel Rolex Jubilee bracelet strap, dial diameter 30mm.

£600-800

294

A STAINLESS STEEL AUTOMATIC CONSTELLATION WRISTWATCH, BY OMEGA, the signed silvered dial with baton hour markers, centre sweep seconds hand and date aperture at numeral 3, signed automatic movement, in polished stainless steel case, to polished and brushed steel bracelet strap, clasp signed, dial diameter 29.5mm.

£150-200



295



AN 18CT GOLD LADY'S WRISTWATCH, BY JAEGER-LE-COULTRE, the signed rectangular cream dial with applied baton hour markers, signed jewelled movement, the 18ct gold case with stirrup shoulders and signed crown, bearing UK import marks and numbered '1670' to the interior and 'A 1126835' to the reverse, to a signed narrow brown crocodile leather strap, dial width 16mm.

£400-600

296



A WW1 MILITARY 'TRENCH' WRISTWATCH, BY PATRIA, CIRCA 1916, the nickel case with wire lugs and with detachable shrapnel guard, the signed white enamel dial with painted luminous arabic numerals and hands, seconds subsidiary dial at numeral 6, with blued steel hand, Swiss 15 jewelled movement, on 'saddler's style' strap, diameter 33mm, including crown 41cm.

£60-80

Patria watches were produced by Omega and marketed under the name of Patria.

297



TWO 19TH CENTURY SILVER CASED POCKET WATCHES, the first a pair cased example with white enamel dial with Roman numerals and verge fusee movement with pierced engraved balance cock, plain pair cases hallmarked for London, 1832; the second with white enamel dial with black Roman numerals and subsidiary seconds dial, full plate lever fusee movement, plain case hallmarked for Birmingham, 1820, first watch diameter 57.5mm, second watch diameter 53mm.

£200-250

298



AN 18CT GOLD HUNTER POCKET WATCH, BY WALTHAM, the signed white enamel dial with black Roman numerals and subsidiary seconds dial, the jewelled movement signed 'AWWCo, Waltham, Mass, Riverside' and numbered '15133136', in plain polished case hallmarked for Birmingham, 1917, on a slightly graduated curb-link 18ct gold Albert chain with swivel clasp and later added ring bolt clasp and T-bar, watch diameter 50mm, chain length 37.5cm.

£600-800

End of Sale



London Specialist Auctioneers
Jewellery Medals Coins Banknotes

We are currently accepting entries for our

**Jewellery, Watches
and
Objects of Vertu Sale**

to be held on

Tuesday 4th September at 2pm

Closing date for entries 16th July



All enquiries please contact Frances Noble or Laura Smith
on 020 7016 1700 or email jewellery@dnw.co.uk

*Image shows a pair of Art Deco sapphire and diamond
ear pendants to be included in this sale*

DIAMONDS

Diamonds are assessed according to the four Cs:

Carat weight

1 carat equals 0.2 grams.

Cut

The quality of a cut is assessed in terms of its proportions, symmetry and polish.

Colour

Unless regarded as a 'fancy' coloured diamonds, all diamonds are graded on their lack of colour. The gradings runs as follows:

GIA	CIBJO	Traditional
D	Exceptional White + (EW+)	Finest White
E	Exceptional White (EW)	Finest White
F	Rare White + (RW+)	Fine White
G	Rare White (RW)	Fine White
H	White (W)	White
I	Slightly Tinted White (STW)	Commercial White
J	Slightly Tinted White (STW)	Top Silver Cape
K	Tinted White (TW)	Top Silver Cape
L	Tinted White (TW)	Silver Cape
M-Z	Tinted Colour (TC)	Cape
Fancy	Fancy Colour	

Clarity

Diamonds are graded on their freedom from inclusions (within the stone) and blemishes (found on the surface of the stone). They are assessed using 10x magnification, and are graded as follows:

GIA	CIBJO	Description
Flawless (FL)	Loupe Clean (LC)	Shows no inclusions or blemishes
Internally Flawless (IF)	Loupe Clean (LC)	Shows no inclusions and only insignificant blemishes
Very Very Slightly Included (VVS1/2)	Very Very Slightly Included (VVS1-2)	Contains minute inclusions which are very difficult for an experienced grader to see with 10x magnification
Very Slightly Included (VS1-2)	Very Slightly Included (VS1-2)	Contains very small inclusions that are difficult to see with 10x magnification
Slightly Included (SI1-2)	Slightly Included (SI1-2)	Contains inclusions that are easily visible with 10x magnification
Imperfect/Included (I1-3)	Pique (P1-3)	Contains inclusions that are obvious with 10x magnification and can often be seen with the naked eye; durability may be affected

Please note the four Cs of a diamond cannot be fully assessed whilst the stone is mounted. The approximate gradings provided in the condition reports are estimations, made by the specialists whilst the stones were mounted and are for guidance only. If a stone has been unmounted and assessed in a gemmological laboratory, this will be noted in the cataloguing/condition report.

INDEX of MAKERS

Asprey.....	Lots 139 and 212
Barnet Henry Joseph.....	Lot 261
Barnard & Sons Ltd.....	Lot 268
Barraud & Lunds.....	Lot 287
Bennet, Sir John.....	Lot 285
Beuche Girod.....	Lot 279
Boucheron.....	Lot 215
Bulgari.....	Lot 283
Byles, Mark.....	Lots 142, 143, 144, 145 and 146
Cartier.....	Lots 80, 81, 82, (104?) and 166
Christoff, M.....	Lot 121
Cropp and Farr.....	Lot 213
Dunhill.....	Lots 277 and 273
Engel, Gertrude.....	Lot 181
Gabriel.....	Lot 289
Gage, Elizabeth.....	Lot 164
Garrards.....	Lot 212
Glen, Harriet.....	Lot 38 and 39
Grima.....	Lots 116 and 166
Gucci.....	Lot 170
Hermes.....	Lot 282
Hilliard & Thomason.....	Lot 259
Hunt & Roskell.....	Lot 228
Jaeger le Coultre.....	Lot 295
Jensen, Georg.....	Lots 176, 177 and 182
Jurgenson, Jules.....	Lot 288
Knox, Archibald.....	Lot 179
Koppel, Henning.....	Lot 176
Kutchinsky.....	Lots 155, 165, 190 and 191
Lalaounis.....	Lot 101
Le Vian.....	Lot 40
Louis Vuitton.....	Lot 111
Liberty & Co.....	Lot 179
McCabe, James.....	Lot 286
McDonald, Kiki.....	Lots 171 and 172
Michelson, Anton.....	Lot 181
Mikimoto.....	Lot 219
Mills, Nathaniel.....	Lots 262, 263 and 265
Moore, Francis.....	Lot 284
Moussaieff.....	Lot 189
William Neale (& Sons).....	Lots 264 and 267
Omega.....	Lots 280, 294 and 296
Patria.....	Lot 296
Rolex.....	Lot 293
Roskell, Robert.....	Lot 292
Sakata.....	Lot 281
Sheaffer.....	Lot 277
Simon G.....	Lot 122
Stein, Lea.....	Lot 75
Story, William.....	Lot 290
Theo Fennell.....	Lot 128
Thomas.....	Lot 168
Van Cleef & Arples.....	Lot 158
Waltham.....	Lots 228 and 291
Wharton, Stuart.....	Lots 168 and 169
Yard, Raymond.....	Lot 141





Commission Form – Jewellery 26 June 2018

Please bid on my behalf at the above sale for the following Lot(s) up to the price(s) mentioned below. These bids are to be executed as cheaply as is permitted by other bids or any reserve. I understand that in the case of a successful bid, a premium of 20 per cent (plus VAT if resident in, or posted to within, the European Union) will be payable by me on the hammer price of all lots.

Please ensure your bids comply with the steps outlined below:-

- Up to £100 by £5
- £100 to £200 by £10
- £200 to £500 by £20
- £500 to £1,000 by £50
- £1,000 to £2,000 by £100
- £2,000 to £5,000 by £200
- £5,000 to £10,000 by £500
- £10,000 to £20,000 by £1,000
- £20,000 to £50,000 by £2,000
- £50,000 to £100,000 by £5,000
- Over £100,000 by £10,000

Bids of unusual amounts **will be rounded down** to the bid step below and will **not** take precedence over a similar bid unless received first. All absentee bids will be executed in the name of 'Wood'.

NOTE: All bids placed other than via our website should be received by 16:00 on the day prior to the sale. Although we will endeavour to execute any late bids, DNW cannot accept responsibility for bids received after that time. It is strongly advised that you use our online **Advance Bidding Facility**. If you have a valid email address bids may be entered, and amended or cancelled, online at www.dnw.co.uk right up until a lot is offered. You will receive a confirmatory email for all bids and amendments. Bids posted or faxed to our office using this form will now be entered by our staff into the system using exactly this facility to which our clients now have access. **There is, therefore, no better way of ensuring the accuracy of your advance bids than to place them yourself online.**

I confirm that I have read and agree to abide by the Terms and Conditions of Sale printed in the catalogue.

Signed _____

Name (Block Capitals) _____ Client Code _____

Address _____

Tel: _____ E-mail _____

If successful, I wish to pay for my purchases by (please indicate):

- Cash
- Cheque
- Credit/Debit Card (see below)
- Bank Transfer
- Other (please give details) _____

Please note that all payments for purchases by credit card are subject to a 2 percent surcharge on the total invoice price. All payments to be made in pounds sterling.

If successful, I wish to pay for my purchases by (please indicate):

- Master Card
- Visa
- Amex
- Debit card (no surcharge) Issue No

Name (as shown on card) _____

Card no. _____ Start Date / Expiry Date /

Your bids may be placed overleaf



www.dnw.co.uk

We were established in 1991 and are located in a six-storey Georgian building in the heart of London's Mayfair, two minutes walk from Green Park underground station.

Our staff of experts collectively have over 300 years of unrivalled experience on all aspects of numismatics, including coins of all types, tokens, commemorative medals, paper money, orders, decorations, war medals, militaria and numismatic books.

We hold numerous auctions each year, the full contents of which are published on the internet around one month before the sale date, together with a unique preview facility which is available as lots are catalogued and photographed. Printed auction catalogues for auctions are mailed to subscribers approximately three weeks prior to each sale.

In addition, we handle discreet private treaty sales of fine orders, decorations and medals.



Auction viewing room



Reception

Our offices, open from 9am to 5:30pm, Monday to Friday, include a pre-auction viewing room, enabling us to offer this facility to clients during the three weeks prior to an auction.

Auctions are held in our building at 16 Bolton Street, Mayfair, where sales may be attended in person. Free online bidding is available using our own live bidding system or by placing commission bids, all of which and much more being available via our website at www.dnw.co.uk.

We look forward to welcoming clients to Bolton Street and assure you of a warm reception.

Location

