



**Jewellery, Watches and
Objects of Vertu**

**Tuesday 26th March 2019
at 2pm**

Catalogue J11

BOARD of DIRECTORS

Pierce Noonan	Managing Director and CEO	020 7016 1700	pierce@dnw.co.uk
Nimrod Dix	Executive Chairman	020 7016 1820	nimrod@dnw.co.uk
Robin Greville	Head of Systems Technology	020 7016 1750	robin@dnw.co.uk
Christopher Webb	Head of Coin Department	020 7016 1801	chris@dnw.co.uk

AUCTION SERVICES and CLIENT LIAISON

Philippa Healy	Head of Administration (Associate Director)	020 7016 1775	philippa@dnw.co.uk
Emma Oxley	Accounts and Viewing	020 7016 1701	emma@dnw.co.uk
Christopher Mellor-Hill	Head of Client Liaison (Associate Director)	020 7016 1771	christopher@dnw.co.uk
Chris Rumney	Client Liaison Europe (Numismatics)	020 7016 1771	chrisrumney@dnw.co.uk
Chris Finch Hatton	Client Liaison	020 7016 1754	finch@dnw.co.uk
David Farrell	Head of Logistics	020 7016 1753	dave@dnw.co.uk
James King	Deputy Head of Logistics	020 7016 1833	james@dnw.co.uk

JEWELLERY, WATCHES and OBJECTS of VERTU

Frances Noble	Head of Department (Associate Director)	020 7016 1781	frances@dnw.co.uk
Laura Smith	Specialist	020 7016 1782	laura@dnw.co.uk

COINS, TOKENS and COMMEMORATIVE MEDALS

Christopher Webb	Head of Department (Director)	020 7016 1801	chris@dnw.co.uk
Peter Preston-Morley	Specialist (Associate Director)	020 7016 1802	ppm@dnw.co.uk
Jim Brown	Specialist	020 7016 1803	jim@dnw.co.uk
Tim Wilkes	Specialist	020 7016 1804	tim@dnw.co.uk
Nigel Mills	Consultant (Artefacts and Antiquities)	020 7016 1700	nigelmills@dnw.co.uk
Peter Mitchell	Consultant (British Hammered Coins)	020 7016 1700	petermitchell@dnw.co.uk
Douglas Saville	Consultant (Numismatic Literature)	020 7016 1700	dougllassaville@dnw.co.uk

BANKNOTES

Andrew Pattison	Head of Department	020 7016 1831	andrew@dnw.co.uk
Thomasina Smith	Specialist	020 7016 1832	thomasina@dnw.co.uk
Michael O'Grady	Consultant	020 7016 1700	michaelogrady@dnw.co.uk

MEDALS and MILITARIA

Nimrod Dix	Head of Department (Director)	020 7016 1820	nimrod@dnw.co.uk
Oliver Pepsys	Specialist (Associate Director)	020 7016 1811	oliver@dnw.co.uk
Mark Quayle	Specialist (Associate Director)	020 7016 1810	mark@dnw.co.uk
John Hayward	Consultant	020 7016 1700	johnhayward@dnw.co.uk
Arkadi Kilman	Consultant (Russian Awards)	020 7016 1700	akilman@dnw.co.uk
Dixon Pickup	Consultant (Militaria)	020 7016 1700	dixon@dnw.co.uk

TECHNOLOGY and MEDIA

Robin Greville	Head of Systems Technology (Director)	020 7016 1750	robin@dnw.co.uk
Ian Anderson	Head of Online Services (Associate Director)	020 7016 1751	ian@dnw.co.uk
Jan Starnes	Head of Photography (Associate Director)	020 7016 1773	jan@dnw.co.uk
Ian Kington	Photographer	020 7016 1774	iank@dnw.co.uk
Henry Browne	Photographic Consultant	020 7016 1774	henry@dnw.co.uk
Will Bennett	Senior Press Officer	07770 694254	will@dnw.co.uk
Danielle Quinn	Online Marketing	020 7016 1772	danielle@dnw.co.uk

UK REPRESENTATIVES

Richard Gladdle	Northamptonshire and the Home Counties	richardgladdle@dnw.co.uk
Garry Charman	The Midlands	garrycharman@dnw.co.uk
Michael Trenerry	The West Country	michaeltrenerry@dnw.co.uk
Colin Fraser	Scotland	colinfraser@dnw.co.uk

OVERSEAS REPRESENTATIVES

John Burridge MG	Australia Western Australia	johnburridge@dnw.co.uk
Tanya Ursual	Canada Ontario	tanyaursual@dnw.co.uk
Michael Gietzelt	Germany Berlin	michaelgietzelt@dnw.co.uk
Eiichi Ishii	Japan Tokyo	eiichiishii@dnw.co.uk
Natalie Jaffe	South Africa Cape Town	nataliejaffe@dnw.co.uk
Dr Andy Singer	United States of America Maryland	andsinger@dnw.co.uk



DIX NOONAN WEBB Ltd
16 Bolton Street
Mayfair
London W1J 8BQ
Tel: 020 7016 1700
Fax: 020 7016 1799
VAT No. GB 562 8504 32

Bankers: Lloyds, 39 Piccadilly, London W1J 0AA. Sort Code: 30-96-64. Account No. 00622865
Swift Code: LOYDGB2L IBAN: GB70LOYD30966400622865 BIC: LOYDGB21085

Account Enquiries: accounts@dnw.co.uk
General Auction Enquiries: auctions@dnw.co.uk
To place Commission Bids: www.dnw.co.uk
To book Viewing Appointments: viewing@dnw.co.uk
To Order a Catalogue: www.dnw.co.uk

AN AUCTION OF

JEWELLERY, WATCHES AND OBJECTS OF VERTU

VIEWING
AUCTION

Live Online Auction

With room bidding available at

16 Bolton Street

London

W1J 8BQ

Free live bidding:

www.dnw.co.uk

Tuesday 26th March 2019

at 2pm

VIEWING

Monday 18th March to Thursday 21st March

16 Bolton Street, Mayfair, London W1J 8BQ

Strictly by appointment only

Evening Viewing Thursday 21st March 5:00pm to 7:00pm

Friday 22nd March 10am to 4:30pm

Monday 25th March 10am to 4:30pm

The Morning of the Sale 10:00am to 1:00pm

16 Bolton Street, Mayfair, London W1J 8BQ

Public viewing

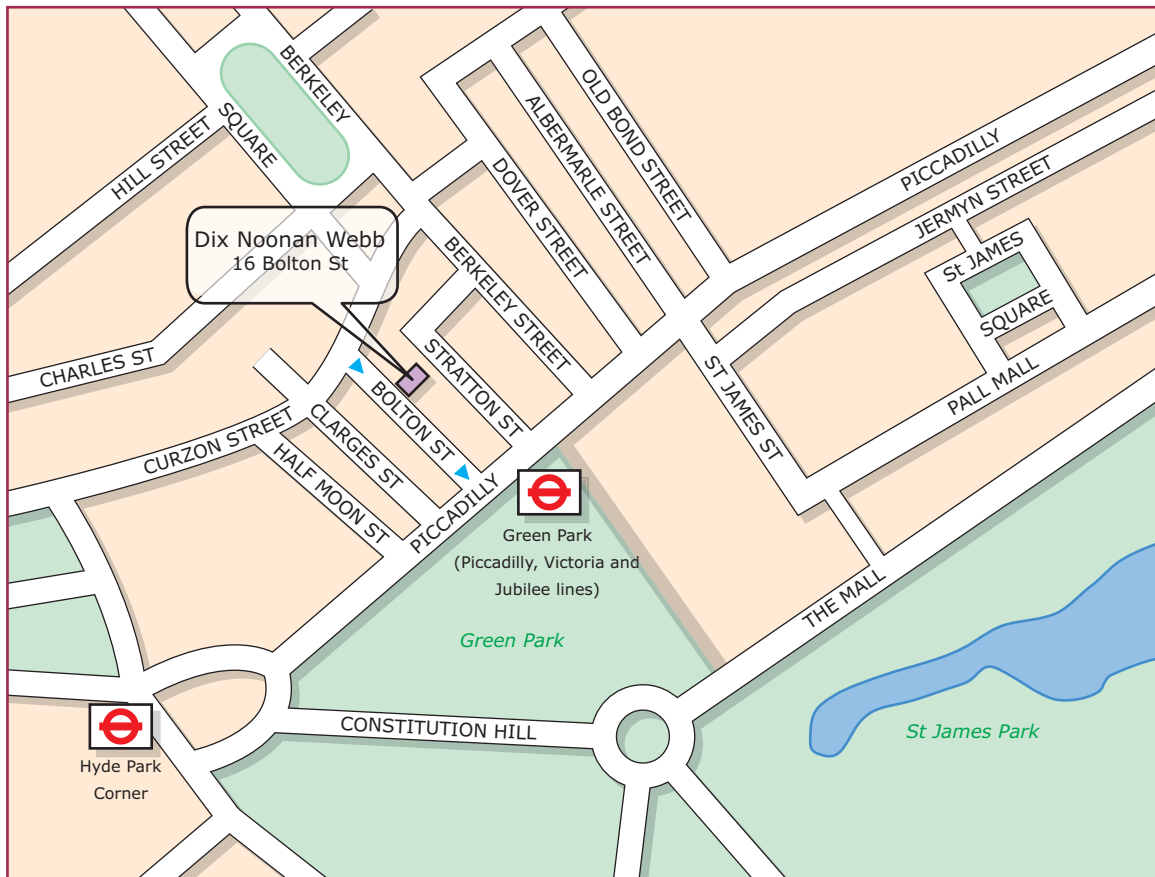
In sending commissions or making enquiries please contact:

Frances Noble or Laura Smith

Contents

Please note: Lots will be sold at a rate of approximately 120 per hour

Jewellery	1-291
Ancient Jewellery and Antiquities.....	292-304
Louis Osman Interest.....	305-313
Objects of Vertu	314-344
Watches.....	345-388



Jewellery



Jewellery

- 1 A TEXTURED CHEVRON-LINK CHAIN NECKLACE, composed of two rows to the front, to foliate shoulders and a matching back chain, in yellow precious metal, clasp stamped '750', necklace length 46.5cm. £500-£600



- 2 TWO PAIRS OF EARRINGS, the first of half hoop design suspending single-cut diamond set elephant drops below, the second of lozenge-shaped articulated brick-link form, all stamped '750', second pair length 36mm. £400-£600,



- 3 FIVE PAIRS OF EARRINGS, comprising a pair of articulated drops set with brilliant-cut diamonds, a large pair of shaped drops accented with diamonds, both stamped '750', a pair of large polished drop earpendants, bearing French marks, a smaller pair of polished drop earrings and a pair of three colour hoop earrings. £400-£600



4



A PAIR OF LEAF CLIP EARRINGS, of bold polished sculptural design, highlighted with inset brilliant-cut diamonds to the stems, with hinged clip fittings, yellow precious metal stamped '750, length 3.8cm. **£300-£500**

5

AN 18CT GOLD BROOCH, of stylized foliate design, with UK import marks for London, 1964, length 38mm. **£240-£340**



x6

A DIAMOND SINGLE STONE RING, the old brilliant-cut diamond claw set above tapered shoulders set with two rows of graduated single-cut diamonds, mounted in yellow and white precious metal, *principal diamond approximately 0.65 carats, ring size K.* £400-£600



7



A DIAMOND HALF HOOP RING, the narrow band composed of ten tension set brilliant-cut diamonds, mounted in white precious metal, shank stamped 'VANNA' and '18k', *total diamond weight approximately 0.6 carats, ring size N.* £180-£220

8

A GEORGIAN DIAMOND SET TWIN HOOP RING, the graduating cushion-cut diamonds in individual pinched collet mounts, to bifurcated shoulders, reverse of shank cut and later repaired, *ring size L.* £600-£800



9



A PINK TOURMALINE RING, the oval-cut pink tourmaline between demi-lune-cut green tourmaline and brilliant-cut diamond accents, claw set between channel set baguette-cut diamond shoulders, mounted in white precious metal, ring size P½. £1,400-£1,600

10

A LARGE PERIDOT AND TOURMALINE CLUSTER DRESS RING, the oval mixed-cut peridot claw set within a surround of round-cut pink tourmalines, mounted in yellow precious metal, ring size O, cluster dimensions 32 x 25.5mm. £600-£800



11



A VICTORIAN GOLD GOTHIC REVIVAL BROOCH, the circular panel brooch with pierced trefoil details and applied ropetwist and wirework decoration, with glazed hairwork panel verso, brooch diameter 31mm. £200-£300

12



A VICTORIAN DIAMOND SET BAR BROOCH AND A WEDDING RING, the bar brooch composed of five roundels with applied bead and wirework borders, alternately centred with claw set old brilliant-cut diamonds or round-cut citrines, mounted in yellow gold, reverse inscribed 'Anna from James, Nov 18th 1884', together with a wedding band, interior inscribed for the same couple, bar brooch length 49mm. £300-£500

13



A LATE VICTORIAN 18CT GOLD BROAD BAND RING, chased with flowers and foliage throughout, maker's mark E.V, hallmark for Chester 1895, ring size (leading edge) K $\frac{1}{2}$. £150-£200

14

A VICTORIAN 18CT GOLD BUCKLE RING, hallmarked for London, 1884, ring size Q. £100-£150



-
- 15** AN EARLY VICTORIAN GOLD AND AMETHYST DOUBLE HEART BROOCH, the carved amethyst collet set within a border of scrolling foliage against a textured ground, the reverse with glazed locket compartment, *length 3cm.*
£100-£150



-
- 16** A VICTORIAN MICRO-MOSAIC BROOCH, the oval micro-mosaic depicting a classical Temple of Vesta, in a black glass mount, collet set within a surround with applied ropetwist wirework detail, *brooch length 26mm.*
£140-£180



-
- 17** A VICTORIAN REVERSE PAINTED CRYSTAL DOG BROOCH, the round cabochon crystal reverse carved and painted to depict the head and shoulders of a pug wearing a red collar with a bell, collet set within a beaded surround, to a gold safety pin bar brooch, *brooch length 33mm.*
£140-£180



-
- 18** A VICTORIAN REVERSE PAINTED CRYSTAL SQUIRREL STICKPIN, the round cabochon crystal reverse carved and painted to depict a squirrel seated on a branch, collet set within a ropetwist surround, *stickpin head diameter 21mm.*
£200-£300



19



THREE DIAMOND SET RINGS, comprising a claw set three stone brilliant-cut diamond ring, a Victorian/Edwardian open claw set five stone diamond ring, and an illusion set two stone diamond crossover ring, together with a Victorian gold guard chain with gilt locket pendant. £400-£500

20



A GROUP OF FOUR RINGS, comprising a raised band ring set with two rows of brilliant-cut diamonds, mount stamped '750', a channel set brilliant-cut diamond half hoop ring, mount stamped '750' and signed 'Jean Pierre', a five stone sapphire ring, mount stamped '585', and a diamond single stone ring, in raised claw setting. £500-£600

21



THREE 1970s DRESS RINGS, the first of ropetwist and round-cut ruby set whorl design, mounted in yellow precious metal, stamped '750'; the second collet set with an oval mixed-cut smoky quartz, the mount with applied ropetwist detail, stamped '750'; the third of abstract textured bombé cluster design, accented with round-cut emeralds and single-cut diamonds, shank stamped '750'. £500-£700

22



A GROUP OF 1970s DRESS RINGS, comprising two cushion-shaped rectangular step-cut citrine rings, a bombé dress ring composed of an open cluster of claw set round-cut rubies and single-cut diamonds and abstract textured panels, and a cushion-shaped step-cut amethyst ring, to a later brick-link chain style shank. £400-£600



A SMALL GROUP OF 19TH CENTURY JEWELS, comprising an Austro-Hungarian citrine set earrings and brooch ensuite, a larger Austro-Hungarian garnet and enamel brooch, and a pair of Victorian cabochon garnet earrings, adapted with later fittings and cultured pearl drops, together with a pair of openwork drop earpendants, (formerly the upper section of the previous earpendants), now with cultured pearl surmounts, *Austro-Hungarian earpendants length 74mm.* £200-£300



A SMALL COLLECTION OF ASSORTED RINGS, including a set of three half hoop rings, two set with rose-cut diamonds, the other with rose-cut red stones, all in square claw settings, mounts stamped '750', a three stone sapphire ring and two cabochon blue stone rings. £300-£500

25



A DIAMOND ETERNITY RING, set all the way around with single-cut diamonds in millegrained square settings, mounted in polished white precious metal, stamped '18ct', ring size N. £300-£400

26

A DIAMOND CLUSTER RING, the flowerhead cluster composed of claw set brilliant-cut diamonds around raised central brilliant, mounted in white precious metal, total diamond weight approximately 1.15 carats, ring size N½. £300-£400



27



A TWO ROW DIAMOND HALF HOOP RING, the two rows of brilliant-cut diamonds in square claw settings, mounted in white precious metal, shank stamped '750', ring size P, total diamond weight approximately 1.9 carats. £500-£700

28

A TRIPLE CLUSTER DIAMOND RING, composed of three flowerhead clusters of claw set brilliant-cut diamonds, mounted in white precious metal, stamped '585', ring size P. £500-£700





A DIAMOND AND PLATINUM MAYMAY ROSE PENDANT NECKLACE, BY BOODLES, the pendant modelled as a stylised open rose bloom, set throughout with brilliant-cut diamonds, around larger central stone, to polished bale, on faceted belcher-link chain, signed, hallmarked and bearing maker's mark 'B&D', total diamond weight approximately 0.5 carats, pendant length 20mm. £700-£900

Boodles head designer Rebecca Hawkins launched the Maymay collection for the firm in 2013.

A LARGE DIAMOND SET ROSE BROOCH, modelled as a spray containing a rose bloom, rose hip and leaves, tied with a ribbon, millegrain set throughout with rose-cut diamonds, with principal brilliant-cut diamonds to the rose hip and centre of the bloom, mounted in yellow and white precious metal, length 9cm. £800-£1,200





OF JEWISH INTEREST: A BAR MITZVAH COIN/MEDAL PENDANT, the coin/medal commemorating 'the fulfilment of the Mitzvoth', collet set within a radiating surround, to tapered bale, *pendant diameter 47mm.* £300-£500



A SOVEREIGN SET PENDANT, the George V sovereign, 1914, collet set in pendant mount, together with a small round ingot, with image of a hindu deity to the obverse, reverse reading '10gm, 999 gold'. £360-£400



A SOVEREIGN SET PENDANT, the sovereign dated 1902, and a pendant mounted with a half sovereign, the coin dated 1914. £300-£320



A SOVEREIGN SET PENDANT, the Edward VII sovereign, 1906, collet set in a textured oval panel mount with ropetwist detail, hallmarked for 9ct gold, suspended on a 9ct gold box-link chain, *pendant length 61mm.* £240-£300



A SOVEREIGN SET PENDANT, the Victoria sovereign dated 1892, mounted within scrolling ropetwist and bead setting, on suspensory loop, stamped marks to reverse of mount indistinct, *length 4cm.* £220-£240



A VICTORIA SOVEREIGN, 1890, unmounted. £200-£240

x37

A PAIR OF WHITE ENAMEL HERALDIC CUFFLINKS, the matt piqué/marcella white enamel oval panels each applied with a knight's plumed helmet, or a crest of a demi lion rampant, mounted in yellow precious metal, to figure-of-eight connections, panels measure 19.5 x 14.5mm.

£600-£800



x38



TWO GOLD ROYAL NAVY OFFICERS' SWEETHEART BROOCHES, one stamped '18ct', for an officer in the regular Royal Navy, the other stamped '15ct', with 'RNVR' for an officer in the Royal Naval Volunteer Reserve, both accented with coloured enamel.

£100-£150

39

AN 18CT GOLD INGOT PENDANT, of rounded rectangular form, hallmarked for London, 1985 and bearing maker's mark 'S.J.R.', on plain suspensory loop, together with a further small ingot pendant.

£440-£500





A SOUTH AFRICAN GOLD PROSPECTOR'S BROOCH, LATE 19TH CENTURY, modelled as a prospector's spade, a mattock, rope and pail and a nugget, the blade of the spade stamped 'South Africa', in yellow precious metal, length 50mm. £80-£100



OF MASONIC INTEREST: A 9CT GOLD CHARM/PENDANT, of triangular form, with five swivel sections, and a second 9ct gold Masonic charm, by J W Toghill, both hallmarked for Birmingham 1919, first length including suspensory loop 26mm, second length including suspensory loop 36mm. £200-£300



A COLLECTION OF ASSORTED 19TH CENTURY FOB SEALS, comprising three larger examples, two gold, one gilt, and eight smaller examples, six gold mounted, with one modelled as a dog, later suspended on a gilt metal curb-link chain bracelet. £260-£300



- 43 A 1940s/50s YELLOW ENAMELLED AND DIAMOND SET FLORAL PRIMROSE SPRAY BROOCH, the five petal flowerheads each decorated in yellow enamel with orange highlights, and centred with a collet set diamond, set against textured pointed leaves, the wirework stems gathered together with a diamond set tie, yellow precious metal mounted, unmarked, in fitted case signed by Garrard & Co Ltd, length 5.5cm. £800-£1,200

- 44 A NOVELTY CATERPILLAR BROOCH, modelled as a baroque pearl caterpillar with round-cut ruby eye, winding itself into a white precious metal cocoon, inset with single-cut diamonds, on a yellow precious metal textured leaf accented with claw set round-cut rubies, mount stamped '14k', brooch length 82mm. £600-£800







AN EARLY 19TH CENTURY MOURNING NECKLACE AND EARRINGS SUITE, the necklace composed of clusters of round and oval rose-cut 'French jet' stones, mounted in yellow metal, to a black velvet ribbon tie back, with a pair of matching drop earpendants, to screw back clip fittings, with a semi fitted red leather period case. £300-£500

46

TWO GEORGE III MARQUISE-SHAPED MOURNING BROOCHES, both with ivory panels painted *en grisaille*, glazed and in closed back gold collet settings, the first depicting two birds carrying a knotted thread between them and bearing the motto 'The farther I fly, the faster we tie', the second depicting a seated female figure holding a plaque reading 'memento', with a sleeping dog at her feet, *first length 26.5mm.* £200-£300

Please note ivory is covered by CITES legislation and may be subject to import/export and trade restrictions.





A GEORGIAN PORTRAIT MINIATURE PENDANT/CLASP, the oval portrait miniature painted on ivory, depicting a Georgian gentleman in a powdered grey wig, wearing a white cravat and a blue coat and waistcoat, glazed, mounted in gold, adapted from a multi strand bracelet clasp, with later pendant loop, *portrait measures 43 x 32mm.* **£200-£300**

Please note ivory is covered by CITES legislation and may be subject to import/export and trade restrictions.

48

AN EARLY 18TH CENTURY MEMORIAL RING, the octagonal faceted 'crystal' bezel displaying gold thread monogram within scrolled border, in closed back collet setting, the reverse decorated with black and white enamel and inscribed 'EL, 1723', to scroll engraved shoulders and a plain band, *ring size P.* **£400-£600**

This ring once belonged to Lydia Phillips of Woodbury and passed thence by descent. Accompanying the ring is a photocopy of the diary of William Phillips, for 13th May 1855 detailing the deathbed wishes of his wife Lydia, in which she states: " *This I wish to give to my daughter Jane Mary: the silk dress her father brought me when in London to the exhibition, [...] and the gould [sic] ring marked E L Date 1723*".

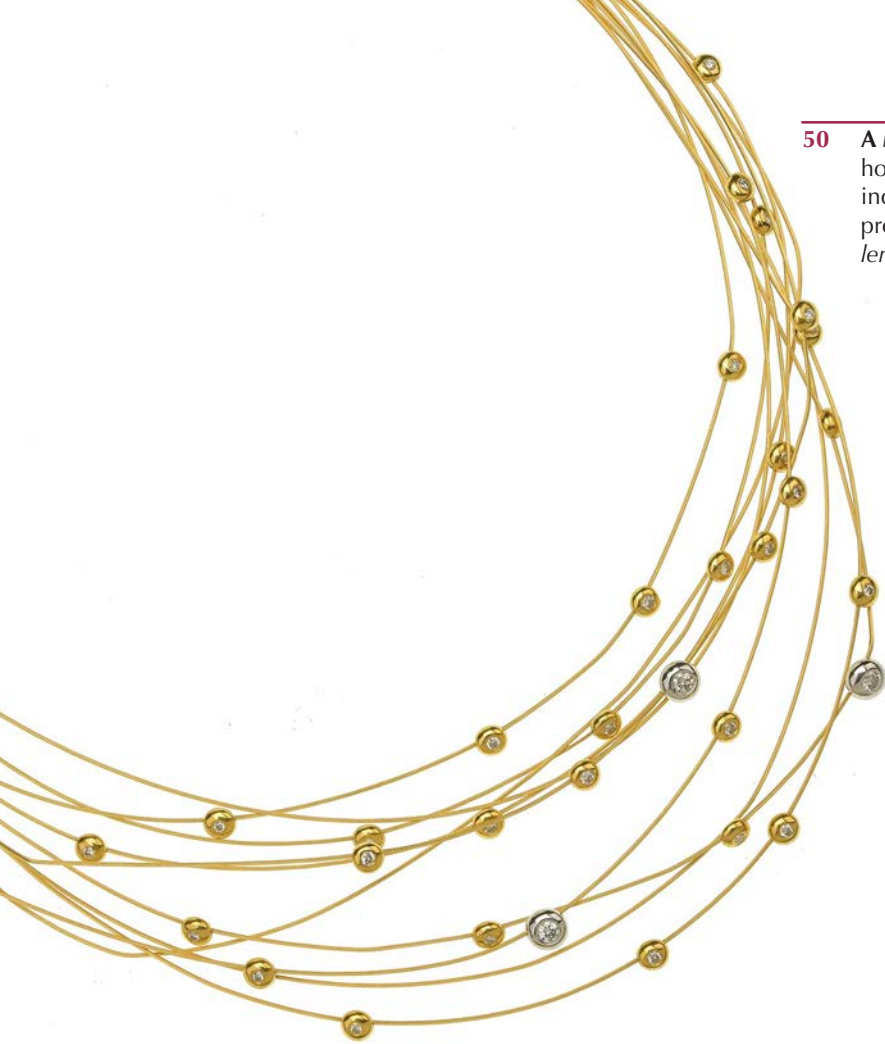


49



A GOLD MEMORIAL RING, EARLY 18TH CENTURY, the glazed painted portrait depicting a cleric, wearing surplice, white bands and black stole, with full bottomed wig, mounted within gadrooned closed back setting, to plain gold D-section shank, *ring head length 10.5mm, ring size M.* **£500-£700**

Provenance: The family of **Edward Whalley** (c1607-c1675), the fourth regicide who signed the death warrant of King Charles I, and Thomas Percy, Bishop of Dromore, Co Down, (1729-1811) and then by descent.



50 A MULTI STRAND DIAMOND NECKLACE, the fine graduating wirework hoops spaced to the front with diamonds, the brilliant-cuts individually set within rubover mounts, yellow and white precious metal mounted, the barrel clasp stamped '750', length 41.5cm. £600-£800



51 A TWO COLOUR CHAIN BRACELET, BY BVLGARI, the faceted bezel-link chain spaced with two roundels and a cylindrical link, all signed 'BVLGARI', clasp stamped '750', bracelet length 19.5cm. £300-£400



52 A DIAMOND SET SUN PENDANT NECKLACE, centred with a circle of brilliant-cut diamonds, the rays each terminating in a diamond highlight, yellow precious metal mounted, on fine trace-link chain, ring and bolt clasp stamped '750', with stamped insect mark, pendant diameter 2.6cm, overall length 41cm. £200-£300



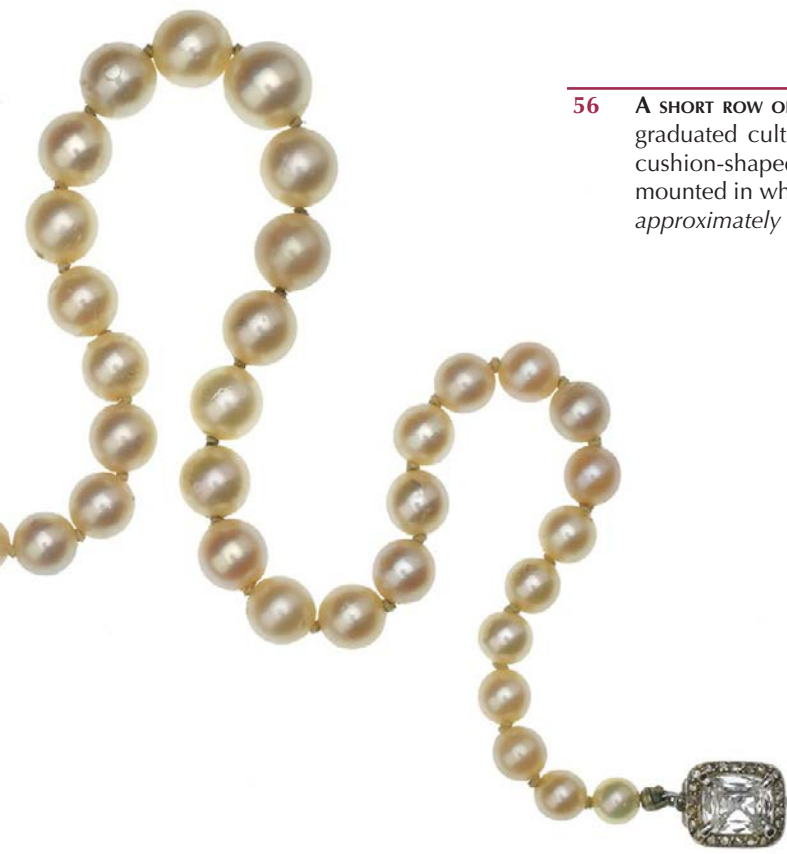
A SINGLE ROW UNIFORM CULTURED PEARL NECKLACE AND MATCHING EARSTUDS, BY MIKIMOTO, the necklace with *pearl diameters approximately 8.8mm*, to a rectangular pieced clasp, signed and stamped 'k18', the pearl earstuds on post fittings, the butterfly fittings with maker's marks and stamped 'k18', *pearl earstud diameters approximately 9.2mm*, *necklace length 43cm*, contained in a signed brown suede case. **£800-£1,000**



A MULTI ROW CULTURED PEARL BRACELET, the eleven rows of uniform cultured pearls with textured baton spacers in yellow precious metal, clasp stamped '750', *bracelet length 17.5-18.5cm*. **£300-£500**



A BLACK SOUTH SEA CULTURED PEARL NECKLACE AND EARRING SUITE, the single row of slightly graduated black cultured pearls, to a spherical brushed platinum clasp rubover set with graduated brilliant-cut diamonds, together with a matching pair of black cultured pearl earstuds, mounted in 18ct white gold, *necklace length 48cm.* **£1,500-£2,000**



56 A SHORT ROW OF GRADUATED CULTURED PEARLS TO A DIAMOND SET CLASP, the single row of graduated cultured pearls to a cluster clasp centred with a claw set rectangular cushion-shaped old-cut diamond within a surround of small rose-cut diamonds, mounted in white precious metal, necklace length 33cm, principal diamond weight approximately 0.9 carats. £1,600-£2,000



57 AN EARLY 20TH CENTURY CULTURED PEARL AND DIAMOND BRACELET, BY CARTIER, comprising four rows of graduated cultured pearls to a ribbon knot clasp set throughout with graduated rose-cut diamonds, mounted in white precious metal, the clasp signed 'MTG' and 'Cartier', and numbered '30-27433', length 17.5cm. £800-£1,000



58



A LATE VICTORIAN DIAMOND LOZENGE-SHAPED BROOCH, set throughout with old-cut and rose-cut diamonds, in pinched collet settings, silver and gold mounted, length 2.3cm. £500-£700

59

A VICTORIAN DIAMOND STAR BROOCH/PENDANT, the twelve rayed star set throughout with graduated old brilliant-cut diamonds, gold and silver mounted, with detachable brooch fitting, length 35mm. £600-£800



x60



A VICTORIAN DIAMOND STAR BAR BROOCH, the domed star motif centred with an old brilliant-cut diamond surrounded by smaller rose-cut diamonds, to a blue enamel border, later mounted on a plain bar brooch, brooch length 51mm. £300-£500

61

A VICTORIAN DIAMOND PENDANT/BROOCH, the central pear-cut diamond pinched collet set within a flowerhead surround of old brilliant and rose-cut diamonds, to a lozenge-shaped scrolled surround with anthemion corners set with old brilliant and rose-cut diamonds, mounted in white precious metal, with detachable brooch fitting, length 41mm. £1,600-£2,000





62

AN IRISH BOG OAK BROOCH AND TWO 19TH CENTURY STICKPINS, the bog oak brooch pierced carved to depict a ruins of Muckcross abbey, Killarney, County Kerry, within a shamrock border. the first stickpin terminal modelled as a rat, pavé set with cabochon turquoise; the second with an oval moss agate panel within a surround of cushion-cut garnets. **£100-£150**

Muckcross Abbey was founded in 1448 by a Franciscan friary for the Observantine Franciscans by Donal McCarthy Mor. It had a violent history and has been damaged and reconstructed many times, the friars be subjected to repeated raids. The final battle was at the hands of Cromwellian forces in 1654, persecuting the remaining friars under Lord Ludlow. The abbey was subsequently burned down and today remain as well preserved ruins.



63



TWO ENAMELLED BUCKLES, the first a Russian silver and cloisonné enamel example, with dagger locking mechanism, marked for 84 zolotniks and bearing maker's mark 'HC'; the second of open scroll and foliate design, in gilt metal with polychrome enamel, to central turtle detail. **£100-£120**

64

A PORTUGUESE DIAMOND SET PENDANT, SECOND HALF OF THE 18TH CENTURY, composed of three linked sections of scrolling floral and foliate design, each centred with a table-cut diamond in raised collet setting, with small diamond highlights throughout (some stones missing), silver and gold mounted, *length 7.8cm*, contained in original gilt tooled red leather fitted case. **£300-£400**





AN ANTIQUE AMBER BEAD NECKLACE, composed of graduated, slightly domed amber disc beads, with a small yellow precious metal beaded cluster links between, to an S-shaped clasp, necklace length 50cm. £300-£400

- 66 A VICTORIAN SCOTTISH HARDSTONE BRACELET, the six links composed of octagonal section agate batons in scroll engraved white precious metal mounts, to ring bolt clasp, length 22cm. £60-£80





ASSORTED ITEMS, comprising a Chinese amber brooch (untested), a Chinese mother o' pearl brooch, an amethyst bead necklace to a pearl and amethyst cluster clasp, two oval chalcedony brooches, a ruby set dress ring, a three row pearl and ruby bead necklace (lacking central pendant, pearls untested), two scent bottle pendants, an Indian silver medallion and a small gilt purse. £260-£360



A COLLECTION OF ASSORTED JEWELLERY, including 19th century enamelled memorial ring, two pairs of gold mounted cultured pearl dress studs, a 19th century rose-cut diamond set cluster button, a turquoise and half pearl ring, a turquoise heart pendant, etc. £160-£200



A COLLECTION OF ASSORTED JEWELLERY AND COSTUME JEWELLERY, including a large shell cameo brooch, in a 9ct gold mount, a ropetwist chain necklace with coral set pendant, the pendant stamped 14k to the reverse, a pair of hoop earrings, stamped '750', an initial 'J' pendant, stamped 9ct, a pendant in the form of a bottle stamped '750', a further gem set pendant, a Victorian silver hinged bangle, two agate bead necklaces, and an assortment of costume jewellery.

£200-£300

Please note coral is covered by CITES legislation and may be subject to import/export and trade restrictions.



A MIXED LOT OF JEWELLERY, including a small natural pearl necklace (*untested*), a diamond set cocktail watch, on later expanding bracelet strap, a Victorian shell cameo brooch depicting Hebe and the eagle, cased and further paste set items.

£200-£300



A SMALL GROUP OF ASSORTED JEWELLERY, including a tapered bar brooch set with graduated half pearls, to old brilliant-cut diamond trefoil terminals, an early 19th century glazed memorial locket, an Edwardian amethyst set brooch/pendant, a white metal locket embossed to the front with an Indian deity, etc. £200-£300



A COLLECTION OF ASSORTED ANTIQUE JEWELLERY, including a Victorian agate panel brooch, an Edwardian turquoise set spider and web pendant, a silver Aesthetic movement panel brooch, a 'Mizpah' brooch, a shell cameo of Hebe and the eagle, three Victorian/Edwardian lockets, two imitation diamond rings, two silver plated embossed buttons depicting huntsmen and hounds, a white stone set horseshoe brooch and an unmounted cabochon opal. £200-£300

73

AN 18CT WHITE GOLD, SAPPHIRE AND DIAMOND PENDANT, the baton pendant composed of a central line of scissor-cut sapphires between borders of brilliant-cut diamonds, mounted in white gold, hallmarked, suspended on a fine flattened curb-link chain necklace, clasp stamped '750', pendant length 18mm. **£300-£400**



74



AN 18CT WHITE GOLD AND DIAMOND PENDANT AND RING SUITE, the pear-shaped pendant and half hoop ring each centred with a line of slightly graduated baguette-cut diamonds within a border of slightly graduated brilliant-cut diamonds, pendant on a matching belcher-link chain, all hallmarked, pendant length 16.5mm, ring size M. **£600-£800**

75

A PAIR OF DIAMOND EARSTUDS, the brilliant-cut diamonds in open flowerhead claw settings, to screw back stud fittings, together with a further single diamond earstud, the brilliant-cut diamond in simple four claw setting, to screw back stud fitting, all mounted in white precious metal, first pair: total diamond weight approximately 0.65 carats; single earstud diamond weight approximately 0.25 carats. **£400-£600**





A SILVER-GREY BAROQUE CULTURED PEARL NECKLACE, to a multi gem set cluster clasp, mounted in white precious metal, *length 83cm.* £50-£70



AN 18CT WHITE GOLD AND DIAMOND SET THREE ROW BRACELET, composed of linked collet set diamonds in a grid design, to a vertical slide clasp stamped '750', *length 18.5cm.* £500-£600

A DIAMOND SET LINE BRACELET, BY DE BEERS, composed of narrow baton links claw set with small brilliant-cut diamonds, spaced with larger graduated claw set brilliant-cut diamonds, mounted in 18ct white gold hallmarked, signed and bearing maker's mark 'DB', *bracelet length 16.8cm.* £1,000-£1,500



A Private Collection of Jewels
by de Grisogono

- 79 A PAIR OF 18CT GOLD 'ZIGANA' EARRINGS, BY DE GRISOGONO, of polished undulating volutes in yellow gold, the earclip fittings with hinged posts, signed, numbered 'B 32515' and bearing European convention marks, length 38.5mm. £2,000-£3,000



- 80 AN 18CT ROSE GOLD AND DIAMOND SET 'ZIGANA' COCKTAIL RING, BY DE GRISOGONO, the polished swirling volutes edged with brilliant-cut diamonds, signed 'de GRISOGONO' to the inside shank, numbered 'B26553', and European convention mark for 18ct, ring size M (leading edge), in signed box. £2,000-£3,000





A Private Collection of Jewels
by de Grisogono



81 A GOLD AND DIAMOND SET 'BOULE' PENDANT ON DIAMOND SET CHAIN NECKLACE, BY DE GRISOGONO, the polished spherical pendant randomly set with graduated brilliant-cut diamonds, in individual rubover mounts, suspended from a polished crescent-shaped surmount/clasp, to a two row belcher-link chain necklace spaced with collet set brilliant-cut diamond drops, clasp signed, numbered 'B31789', and bearing European convention mark '750', in signed case and box, pendant length 42mm, necklace length 55cm.

£5,000-£7,000

82 AN 18CT GOLD AND DIAMOND SET 'ALLEGRA' RING AND EARRING SUITE, BY DE GRISOGONO, the ring composed of multiple layered bands, some polished, some set with brilliant-cut brown diamonds, mounted in yellow gold, signed, numbered 'B17638' and bearing French eagle's head assay mark, the earclips of matching half hoop design, with hinged posts, signed, numbered 'B20455' and stamped '750', the earrings cased, ring size M.

£3,000-£5,000





83 AN 18CT GOLD AND GEM SET 'CHIOCCIOLINA' PENDANT ON CHAIN, BY DE GRISOGONO, the sculptural inward spiral edged with brilliant-cut diamonds and colour graded sapphires ranging from pale to deep blue, centred with six briolette drops of sapphires and amethysts, on back chain, with signature pendant terminal, stamped 'de GRISOGONO' and with signature logo, and numbered 'B 33917', pendant length 40mm. £6,000-£8,000

84



A DIAMOND SET PENDANT NECKLACE, the scroll-shaped pendant set with graduated rose-cut diamonds, between small rose-cut diamond borders, suspended from a necklace of similarly set rose-cut diamond links, with pierced shaped links between, to belcher-link back chain, clasp stamped '333', pendant length 53mm. £300-£500

85

A PAIR OF ONYX AND DIAMOND EARPENDANTS, the polished onyx drops in diamond set caps, suspended beneath diamond set anthemion surmounts, mounted in yellow and white precious metal, to stud fittings, length 55mm. £180-200



86



A PAIR OF ONYX AND DIAMOND CUFFLINKS, the square polished onyx panels centred with millegained collet set single-cut diamonds, to polished white precious metal borders and yellow precious metal backs with chain connections, mounts stamped 'GAF' and 'plat&9ct', panels measure 10.5mm square. £200-£300



A 'PICASSO JASPER' AND SILVER COLLAR NECKLACE, the flattened rectangular beads of black-grey jasper with small matt finished silver spacers between, to matching clasp, stamped '925', length 47cm. £160-£200

'Picasso jasper' or 'Picasso stone' is a marble metamorphic limestone.

- 88** A DIAMOND AND ONYX SET PANEL RING, the lozenge-shaped bezel composed of an onyx panel supporting a central collet set old brilliant-cut diamond, to an old brilliant-cut diamond set border and diamond set shoulders, mounted in white precious metal, shank stamped '18ct' and 'plat', ring size T. £400-£600





A SMALL GROUP OF JEWELLERY, including a late Victorian half pearl and rose diamond panel bracelet, to later back chain, a late Victorian curb-link chain bracelet, accented with cabochon turquoise, a pair of *corallium Rubrum* coral drop earpendants, with screw back fittings, and two further bangles. £400-£600

Please note coral is covered by CITES legislation and may be subject to import/export and trade restrictions.



A SMALL COLLECTION OF JEWELLERY, comprising a square section hinged bangle, stamped '750', a curb-link chain bracelet, in yellow precious metal, unmarked, and a 'Virgo' pendant, the 9ct gold medal, signed 'P. Vincze', hallmarked, the mount accented with rose-cut diamonds, on a fine fancy-link chain, clasp stamped '750'. £340-£400



A COLLECTION OF ASSORTED GOLD JEWELLERY, comprising a pair of 9ct gold drop earpendants, a pair of 9ct gold hollow domed earstuds, two 9ct gold chains, a two colour 9ct gold brick link necklace, and a diamond set ring (central stone missing), first earrings length 3.8cm. £300-£400



A MATCHED SUITE OF MULTI GEM SET JEWELS, comprising a bracelet of polished tapered links each channel set with graduated round-cut emeralds rubies or sapphires, with polished rectangular links between each accented with a single brilliant-cut diamond, clasp stamped '14k, 585'; the half hoop ring of plaited design, set with brilliant-cut diamonds and calibré-cut gemstones, mount stamped '14k'; the half hoop earrings of similar plaited design set with calibré-cut gemstones and brilliant-cut diamonds, mounts stamped '750', bracelet length 18cm, ring size O. £800-£1,000



A DIAMOND SET HEART BRACELET, the bracelet composed of alternate textured and polished open heart-shaped links, the textured links each centred with a claw set brilliant-cut diamond, mounted in yellow precious metal, length 19.5cm, total diamond weight approximately 1.4 carats. £400-£600



A CHAIN BRACELET, of double curb-link form, clasp stamped '585', length 19.5cm. £200-£300



A COLLECTION OF CULTURED PEARL SET JEWELLERY, comprising a three row uniform cultured pearl bracelet, clasp stamped '585', a cultured pearl set floral spray brooch, mount stamped '14k', a cultured pearl and sapphire set pendant, mount stamped '14k', suspended on a faceted belcher-link chain, clasp stamped '18k', and a cultured pearl and diamond set stickpin. £600-£800

96

A PAIR OF PORTUGUESE DIAMOND SET FLORAL WREATH EARCLIPS, millegrain set throughout with rose-cut diamonds, mounted in gold and silver, to clip back post fittings, bearing indistinct Portuguese marks, length 21mm.

£300-£500



97



A PAIR OF DIAMOND SOLITAIRE EARSTUDS, the brilliant-cut diamonds in three claw settings, mounted in white precious metal, backs stamped '750', total diamond weight approximately 1 carat.

£1,200-£1,500

98

A SOLITAIRE DIAMOND RING, the brilliant-cut diamond, weighing 1.69 carats, in simple claw setting, between old brilliant-cut diamond set shoulders, mounted in 18ct white gold, shank hallmarked, accompanied by a BGI gem report, ring size M½.

£3,000-£5,000



99 AN EARLY 20TH CENTURY DIAMOND SET LONG LINE BROOCH, the elongated form set throughout with graduating old-cut diamonds, millegrain edged, white precious metal mounted, to gold pin fitting, *total diamond weight approximately 5.30-5.5 carats, length 14.2cm.* £2,600-£3,000



Wendy Ramshaw

Wendy Ramshaw (26 May 1939-9 December 2018), artist and designer, was born in Sunderland. In 1956-60 she trained at the College of Art and Industrial Design, Newcastle upon Tyne, studying illustration and fabric design. Whilst at Reading University for a teaching diploma in 1960 she met David Watkins, a jeweller, artist and musician, who was to be her future husband.

In the 1960s she first came to the public's attention with her brightly coloured paper jewellery, made in kit form, and sold by Mary Quant, her fame continuing to increase after the model Twiggy was photographed wearing a pair of Ramshaw earrings. Wendy is best known for her stacking jewellery, developed in the mid 1960s - sets of complementary gold rings, some with semi-precious stones, often displayed on a sculptural post - these were to become her signature pieces and won her the Design Council Award for Innovation in 1972.

Throughout her career, Wendy continued to push the boundaries in jewellery, sculpture and design, working in materials that ranged from precious stones to metals, plastics, porcelain and glass, and mounting numerous high profile exhibitions. In 2000 she was appointed a Royal Designer for Industry, and in 2003 received a CBE. Her jewellery now appears in 70 public collections worldwide, including the Goldsmiths' Company and the Victoria and Albert museum and continues to inspire countless designers in the UK and worldwide.



100 AN 18CT GOLD TRIO RING, BY WENDY RAMSHAW, WITH ACRYLIC STAND, the central broad ring applied with an oval hardstone cameo carved to depict a flower, collet set within outer beaded border and mounted on post fitting, with full hallmark for London 1976, together with two matching slim beaded band rings, both hallmarked for London 1975, all with maker's mark WR, ring sizes J, with original acrylic stand, height 6.4cm, base diameter 1.9cm. **£500-£700**

Andrew Grima



Andrew Grima (31 May 1921-26 December 2007) was born in Rome to Italian-Maltese parents. Raised in London, he studied mechanical engineering at the University of Nottingham. He joined the Royal Engineers, serving in Burma during World War II. After the war, he started working in his father-in-law's jewellery firm in London. In 1951 when his father-in-law died, Grima took over the business and sold it to a stone dealer in Knightsbridge, on condition that he stayed on as a designer.

Entirely self taught, his limitless imagination led him to create bold and striking designs - each piece being hand wrought, and typically only creating one of each design. In 1960 Grima's talent was spotted by the art director at Goldsmiths' Hall, **Graham Hughes**, who introduced his protégé to many of the rich and famous people who were to become his clients. In 1966 his success was sealed when Prince Philip chose one of his pieces, a stunning ruby brooch, as a present for the Queen, 1966 also being the year that Grima received his royal warrant. In the late 1960s he opened his exclusive gallery in Jermyn Street, Mayfair - the opening event being hosted by Lord Snowdon, then married to Princess Margaret, and his career continued to escalate, attracting a clientele of royalty and society jet-setters of the day.

Winner of numerous awards for his contribution to the jewellery industry, including the Duke of Edinburgh Prize for Elegant Design in 1966, and the De Beers Diamonds International Awards - awarded 13 times, (more than any other jeweller), today, Grima is recognised as being one of the great modernist jewellery designers of the 20th century.

- 101** A DIAMOND AND EMERALD SET DRESS RING, LATE 1960s/ EARLY 70s, ATTRIBUTED TO ANDREW GRIMA, the oval wirework bezel composed of an abstract cluster of gold beads, brilliant-cut diamonds and round-cut emeralds, to a wirework shank, mounted in yellow precious metal, unmarked, *ring size P*.

£2,000-£3,000

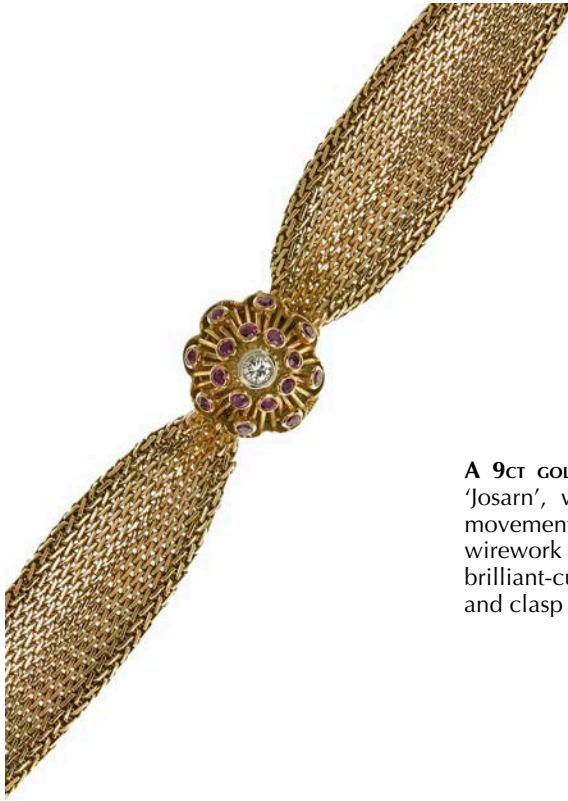
The ring was personally purchased by the vendor as a piece by Andrew Grima, and sold to the vendor by Geoffrey Turk, partner of Andrew Grima, late 1960s/1970s.



- 102** AN 18CT GOLD AND DIAMOND SET SHELL RING AND MATCHING EARCLIPS, BY ANDREW GRIMA, the ring bezel realistically modelled as a clam shell, with two claw set brilliant-cut diamond accents, to a tapered textured angular band, signed 'GRIMA' and stamped with maker's mark 'A G Ltd', hallmarked for London, 1972, the matching earclips hallmarked for London, 1973, signed 'GRIMA' and with maker's mark 'A G Ltd', with signed Grima case, *ring size M, earclip length 28mm*.

£3,000-£4,000





A 9CT GOLD BRACELET WRISTWATCH, the small circular cream dial signed 'Josarn', with applied gilt dot hour markers, jewelled manual wind movement, the case hallmarked, the dial beneath hinged domed wirework cover, decorated with collet set round-cut rubies and a central brilliant-cut diamond, to a woven-link ribbon chain bracelet strap, case and clasp hallmarked, *wristwatch length 17cm.* **£300-£500**

104 A 1940s/50s BRACELET/COCKTAIL WATCH, the mesh strap with rolled borders, decorated with overlapping scale design, centred with a hinged panel inset with two rows of emeralds and rubies and central line of brilliant-cut diamonds, opening to revealing a circular watch dial signed 'ELITAM', the dial with applied gilt Arabic and baton numerals, the case with French lozenge mark and eagle's head guarantee mark and numbered '294', yellow precious metal, *length 18cm.* **£1,200-£1,500**





A DIAMOND AND RUBY SET BROOCH AND EARCLIP SUITE, BY KUTCHINSKY, 1960s, modelled as a scrolled feather or plume, of wirework form, accented with claw brilliant-cut diamonds along the rachis with a ribbon tie detail pavé set with round-cut rubies, together with a pair of earclips ensuite, all three signed 'Kutchinsky', the earclips hallmarked for 18ct gold, London, 1963, brooch width 50mm. £2,600-£3,400

106

A DIAMOND SET BROOCH, BY KUTCHINSKY, 1960s, of stylized foliate spray form in polished 18ct yellow gold, accented with tapered panels of graduated brilliant and single-cut diamonds mounted in white gold, signed, bearing maker's mark and hallmarked for London, 1963, length 64mm. £2,000-£3,000



107

A SILVER TORQUE NECKLACE, BY GEORG JENSEN, the rigid silver torque with entwined detail, numbered 'A80', bearing Georg Jensen maker's marks and UK import marks, and stamped '925 S Denmark', in signed box, width 14cm. £260-£300



108

A PAIR OF DANISH EARPENDANTS, BY KLAUS RYGAARD OF DENMARK, of tear-drop form, the terminals with foliate pierced detail, and partial textured finish, unmarked, on unassociated post fittings, unsigned, length 3.8cm. £50-£70



109

A SILVER SPLIT COLLAR NECKLACE, BY GEORG JENSEN, DESIGNED BY VIVIAN TORUN, the jointed polished collar in two pieces, signed 'Torun' and bearing Georg Jensen maker's mark, numbered '440' and stamped 'Denmark, Sterling', in signed case, width of collar 15cm. £300-£500



110

A PAIR OF FINNISH SILVER CUFFLINKS BY BJORN WECKSTRÖM, of shaped rectangular crumpled form, with swivel fittings, stamped '925 LAPPONIA Bjorn' and with year code for 1973, a further pair of silver cufflinks stamped '925' and a Finnish Modernist 'bronze' pendant on chain designed by P Rosenberg, plastic case stamped 'Tammen Koru Ky, Suomi, Finland', first cufflinks dimensions 26 x 19mm. £120-£160



111



A DANISH SILVER AND BLACK ENAMEL BROOCH, DESIGNED BY HENNING KOPPEL FOR GEORG JENSEN, of abstract splash design accented with black enamel, reverse numbered '323' and bearing maker's marks for Jensen and Koppel, and UK import marks, brooch width 63mm. £100-£150

112

A STAINLESS STEEL WRISTWATCH, DESIGNED BY VIVIAN TORUN, FOR GEORG JENSEN, the circular mirrored dial with fine straight hands, in polished stainless steel case, to asymmetric torque bangle with flared terminal, reverse of case signed 'Georg Jensen, Denmark, Stainless steel, Water resistant, design 326, Torun' and numbered '110542', dial diameter 29mm. £260-£300



x113



AN AMETHYST AND TOURMALINE PENDANT, the pear-shaped cabochon amethyst drop claw set beneath a collet set brilliant-cut diamond and claw set square-cut green tourmaline surmount, to a belcher-link back chain with linked collet set brilliant-cut yellow and white diamond shoulders, mounted in white precious metal, clasp stamped '750', *pendant length 48mm.* £1,000-£1,200

114

AN AMETHYST SET NECKLACE AND BRACELET, the open geometric-link chains spaced with claw set oval-cut amethysts, mounted in yellow precious metal, stamped 'Sorft, 10k', *necklace length 40cm, bracelet length 19cm.* £400-£600



115



AN AMETHYST SET RING AND EARPENDANT SUITE, the earpendants with floral carved marquise-shaped cabochon amethyst drops, claw set on chain suspensions beneath similar oval surmounts, to hook fittings, the ring collet set with a matching marquise-shaped stone, all mounted in yellow precious metal, *earpendant length 58.5mm, ring size P1/2.* £300-£500

-
- 116** AN AMETHYST SET RIVIÈRE NECKLACE, the oval faceted amethysts in linked spectacle settings, suspending a matching central drop with a larger amethyst terminal, mounted in yellow precious metal, clasp stamped '750', necklace length 42.5cm. £500-£700



-
- 117** AN EDWARDIAN AMETHYST AND SEED PEARL PENDANT, the open scrolled pendant with foliate details set throughout with half seed pearls and accented with two round-cut amethysts, mounted in yellow gold, stamped '9ct', on a fine belcher and fetter-link chain, pendant length 60mm. £200-£300



118 A PAIR OF DIAMOND SOLITAIRE EARSTUDS, the brilliant-cut diamonds in single four claw yellow precious metal mounts, with screw back stud fittings, stamped '18k', total diamond weight approximately 1.7 carats.

£1,000-£1,500



119 A PAIR OF PERIDOT AND DIAMOND CLUSTER EARSTUDS, the cushion-shaped mixed-cut peridots claw set within cluster surrounds of small brilliant-cut diamonds, to stud fittings, mounted in white precious metal, stamped '14k', cluster width 8mm.

£300-£400



120 A THREE STONE DIAMOND RING AND EARSTUDS ENSUITE, the ring with a central collet set old brilliant-cut diamond between lozenge set old brilliant-cut diamond shoulders, mounted in two colour precious metal, shank stamped '750', the single stone earstuds comprising old brilliant-cut diamonds in two colour collet settings, together with a five stone ring set with cubic zirconium, ring size L, total diamond weight approximately 1.45 carats.

£600-£800

The mount of the five stone ring originally held the five old brilliant-cut diamonds which were taken out and used to create the new ring and earstud suite.



x121



AN UNMOUNTED BRILLIANT-CUT DIAMOND AND A PAIR OF GOLD COIN COLLAR STUDS, each stud comprising a Victoria half sovereign, 1897, with fitting to the obverse, stamped '18ct', diamond approximately 0.2 carats.

£240-£300



A SINGLE ROW GRADUATED NATURAL PEARL NECKLACE, on knotted silk to a small cluster clasp set with old brilliant-cut diamonds, mounted in gold and silver, accompanied by a GCS pearl report, *necklace length 42cm.* £600-£800

The Gemmological Certification Services pearl report, ref: 79198-25, dated 20.02.2019, confirms that the necklace comprises 94 natural saltwater pearls, of cream colour and very good lustre, with three cultured pearls at positions 1, 2 and 3 next to the clasp.

123 A BAGUETTE-CUT DIAMOND ETERNITY RING, the polished white precious metal band channel set throughout with baguette-cut diamonds, *ring size J.* £400-£500





A LARGE VICTORIAN MEMORIAL BROOCH, the central oval panel bearing a photograph of a bearded gentleman, the plain mount with scroll details to the cardinal points, the reverse with central glazed hairwork scene of a funerary urn beneath weeping willows, surrounded by the inscription 'To Ellen Patterson Murray, from Ebenezer Murray, her husband, in commemoration of 20th January 1847' and 'In memory of Agnes McFarlane Murray, who died 31st Decr 1855 Aged 3 years', length 69mm. £150-£200



A TURQUOISE AND CERAMIC SCARAB SET BRACELET AND CUFFLINKS, the bracelet of graduated turquoise and ceramic scarabs, with hieroglyphs to the undersides, collet set, with fancy connecting links between; the cufflinks with ceramic scarabs collet set to ropetwist borders, mounts stamped '9ct', to silver Egyptian sarcophagus baton terminals. £240-£300



A 9CT GOLD MOUNTED OVAL SHELL CAMEO BROOCH, the cameo carved to depict the goddess Psyche, wearing classical dress and headdress of butterfly wings, collet set in ropetwist mount, hallmarked, brooch length 46.5mm. £100-£120



A LARGE ANTIQUE EASTERN TURQUOISE BEAD NECKLACE, composed of large uniform spherical turquoise and matrix beads, with small white precious metal beaded cluster links between, with a smaller turquoise and matrix bead either side of the rectangular clasp, *length 47cm.* £200-£300

128

AN EARLY VICTORIAN GOLD, HALF PEARL AND TURQUOISE BLUE ENAMEL BRACELET, composed of two snake-link chains knotted at intervals, each knot centred with half pearl and blue enamel set cabochon, the bracelet suspending a matching heart-shaped locket, in turquoise enamel, with a central half pearl and diamond flowerhead cluster, glazed locket back, yellow gold mounted, *bracelet length 18cm.* £600-£800





129 AN INDIAN GEM SET AND PEARL NECKLACE, the multi strand necklace of small freshwater pearls to a stylised centrepiece set with cultured pearls, round-cut rubies and emeralds and brilliant-cut diamonds, between lasqué-cut diamonds and cabochon emerald panel shoulders, to a later 9ct gold mounted ruby and half pearl set open cluster clasp, *necklace length 39.5cm, centrepiece length 68mm.* £600-£800



130 A TEXTURED TRACK-LINK BRACELET, in yellow precious metal, stamped '14k', length 16.5cm, width 18mm.

£650-£750

131 A FRENCH GOLD BRACELET, the textured narrow track-link bracelet with raised ropetwist knot-link borders, clasp bearing French eagle's head assay marks and lozenge maker's mark, *bracelet length 18.5cm.* £400-£600



132 AN INDIAN GEM SET AND ENAMEL BRACELET, with central large flowerhead link, to a slightly graduated foliate link bracelet, set to the front with round and pear-cut rubies and lasque-cut diamonds, the back decorated with red, white, green and blue enamel, mounted in yellow precious metal, *bracelet length 17.5cm.*

£1,500-£2,000



133 A LATE 18TH-19TH CENTURY INDIAN CARVED EMERALD AND ENAMEL PENDANT, the shaped pendant set to the front with a stylised cluster of foliate carved Mughal emerald beads and lasque/table-cut diamonds, in foiled back kundan-work settings, the reverse decorated with polychrome enamels of red, green and blue birds and foliage against a white background, to a later hinged bale, *pendant length excluding bale 37mm.*

£1,400-£2,000

134



A PAIR OF PERIDOT AND DIAMOND SET EARCLIPS, of polished rectangular stepped form, each centred with a raised collet set oval-cut peridot, between two rubover set brilliant-cut diamonds, mounted in yellow precious metal, length 23mm. £300-£500

135

A PAIR OF GEM SET SCROLL EARRINGS, 1940s, the polished yellow gold and pavé set rose-cut diamond scrolls around foliate sprays of claw set cabochon synthetic rubies, with hinged back clip stud fittings, bearing Arabic marks, length 32mm. £300-£500



136



A PAIR OF 9CT GOLD AND SAPPHIRE EARCLIPS, 1940s, of stylised matt and polished ribbon bow design, accented with round-cut sapphires, bearing partial hallmarks, length 30mm. £150-£200

137

TWO LARGE DRESS RINGS, 1930s-1940s, the first of odeonesque design and accented with claw set brilliant-cut diamonds and round-cut synthetic rubies, the second of reeded bombed design with polished scrolls and a cluster of flowerheads, each centred with a claw set single-cut diamonds, both mounted in two colour precious metal, stamped '750', first ring size P½. £500-£600





AN ITALIAN BRACELET AND GEM SET PENDANT, the bracelet of textured and ropetwist links, clasp stamped '750', suspending a pendant/charm of lantern form, with applied bead and ropetwist detail and set with round cabochon gemstones, *bracelet length 19.5cm.*

£800-£1,000

139 **A 1940s/50s SPRAY BROOCH**, of stylised scroll form, with textured foliate detail and accented with small claw set single-cut diamonds, mounted in yellow precious metal, *length 73mm.*

£200-£300





A **BALTIC AMBER BEAD NECKLACE**, the continuous strand of graduated oval amber beads on knotted thread, weight 70gm, necklace length 83cm. £600-£800

This necklace has had a verbal assessment at GCS laboratories confirming that the amber is of Baltic origin, with no evidence of heat treatment.



A **PINK STONE CABOCHON BRACELET**, the round cabochon pink stones, possibly rhodochrosite, collet set with stylised polished links between, mounted in yellow precious metal, clasp stamped '585', bracelet length 18.5cm. £200-£300



AN **AMBER BEAD NECKLACE**, comprising a single continuous strand of slightly graduated irregular polished amber beads, necklace length 93cm. £60-80

The amber has been tested at the GCS Laboratory, with verbal confirmation that it is of Baltic origin and untreated.



A CORAL BEAD NECKLACE, the graduated tonneau-shaped *corallium Rubrum* coral beads to a reeded spherical yellow precious metal clasp, stamped '750', necklace length 65cm. £600-£800

Please note coral is covered by CITES legislation and may be subject to import/export and trade restrictions.

- 144 A CITRINE, EMERALD AND DIAMOND DRESS RING, the high cluster bezel centred with an oval-cut citrine claw set within a foliate and ribbon loop surround set with single-cut diamonds and round-cut emeralds, mounted in yellow gold, bearing gold 800 standard mark for Oporto, post 1938, ring size N. £300-£500





145 AN 18CT GOLD AND DIAMOND FLOWERHEAD NECKLACE AND EARPENDANTS, BY KUTCHINSKY, the necklace centred with a five petal flower head, set throughout with brilliant-cut diamonds, supporting a pendant drop below, with South Sea cultured pearl, measuring 12.5mm diameter, beneath foliate set diamond cap, the principle flower between diamond set links, on belcher-link back chain, signed 'Kutchinsky' to the reverse, the clasp stamped '750', together with a pair of drop earrings of conforming design, each with South Sea pearl drop measuring 13mm diameter, signed to the reverse, with hinge and post fittings, contained in black leather and suede pouch and case signed 'Moussaieff', necklace length 41.5cm, earpendants length 4cm. **£8,000-£10,000**





A RUBY AND SEED PEARL SET BRACELET, composed of 11 round or oval graduating mixed-cut rubies, spaced by pairs of seed pearls, claw set in articulated mounts, between later added twin chain extension sections, to a three stone ruby and seed pearl set clasp (two seed pearls missing), length 17.5cm. **£1,000-£1,200**

147



A DIAMOND ETERNITY RING, millegrain channel set all round with single-cut diamonds, mounted in white precious metal, ring size P $\frac{1}{2}$. **£260-£300**

148 **TWO GARNET SET RINGS**, the first set with an oval rose-cut stone, between scroll engraved shoulders, the second a three stone ring. **£50-£80**



149



A DIAMOND ETERNITY RING, the band set round with brilliant-cut diamonds, mounted in polished white precious metal, ring size R $\frac{1}{2}$, total diamond weight approximately 1.84 carats. **£600-£800**



A PAIR OF GEM SET EARPENDANTS, BY SHAW, the articulate drops composed of linked collet set cabochon gemstones, including pink tourmalines and half pearls, mounted in yellow precious metal to clip fittings, stamped '14k' and 'SHAW', length 56mm. £600-£800

- 151 A DIAMOND CROSSOVER DRESS RING, the central principal brilliant-cut diamond in open claw setting, between crossover shoulders composed of smaller similarly set stones, mounted in white precious metal, principal diamond approximately 1.2 carats, ring size I. £1,500-£1,800





A PINK SAPPHIRE AND DIAMOND PENDANT, the pear-cut pink sapphire drop claw set beneath similarly set pear-cut diamond surmount, mounted in 18ct white gold, hallmarked and bearing maker's mark 'EWA', suspended on a fine fancy curb-link chain, in 18ct white gold, clasp partially hallmarked, *pendant length 14mm, chain length 39cm.* **£300-£500**



A PAIR OF DIAMOND HALF HOOP EARRINGS, the rounded tapered half hoops pavé set to the front with graduated brilliant-cut diamonds and with a girdle of channel set baguette-cut diamonds, to hinged back stud fittings, mounted in white precious metal, *length 19.5mm.* **£300-£500**

A PAIR OF LOZENGE-SHAPED DIAMOND SET EARPENDANTS, the lozenge-shaped hoop drops each accented with four brilliant-cut diamonds, suspended beneath a claw set diamond surmount, to crew back stud fittings, *length 22mm.* **£300-£400**





A PINK SAPPHIRE AND DIAMOND RING, the oval mixed-cut pink sapphire between two brilliant-cut diamonds, all claw set, mounted in 18ct white gold, shank hallmarked and bearing maker's mark 'EF', ring size M½.

£300-£500

156 **A DIAMOND SINGLE STONE RING**, the brilliant-cut diamond in raised claw setting to a flat band with pavé set diamond shoulders, mounted in white precious metal, shank stamped 'MDC NYC' and '14k', accompanied by a GIA diamond grading report, ring size L.

£3,000-£5,000

The Gemmological Institute of America diamond grading short report, dated 4th August 2015, ref. 5203569336, gives the weight of the diamond as 1.28 carats, with a colour H, clarity VS2 and excellent cut.



157



A SINGLE STONE DIAMOND RING, the tinted rectangular-cut diamond claw set between peaked angular-shoulders, each set with a single brilliant-cut diamond, mounted in white precious metal, shank stamped '750', principal diamond weight approximately 0.55 carats, ring size O½.

£400-£600

158

A DIAMOND CLUSTER RING, 1960s-1970s, the central claw set brilliant-cut diamond within a tired cluster surround of claw set single-cut diamond petals, to a trifurcated wirework shank, mounted in white precious metal, shank stamped '14k', principal diamond weight approximately 0.3 carats, ring size L.

£240-£340



159



A DIAMOND HALF HOOP RING, the seven uniform brilliant-cut diamonds pinched collet set in 18ct white gold, shank hallmarked, ring size L½, total diamond weight approximately 0.7 carats.

£200-£300

160



A GARNET AND ROSE-CUT DIAMOND CLUSTER RING, the rectangular cushion-shaped cabochon garnet within a surround of pinched collet set rose-cut diamonds, between scrolled shoulders, gold and silver mounted, *ring size P*. £300-£400

161

A RUBY AND DIAMOND DRESS RING, the domed bombé dress ring composed of tapered panels of graduated single-cut diamonds, with ropewist detail between, to a central oval mixed-cut ruby (chipped) and brilliant-cut diamond cluster, mounted in yellow and white precious metal, *ring size I-J*. £800-£1,200



162



A FRENCH RUBY AND DIAMOND TRIPLE ROW RING, the broad flat band set with a row of round-cut rubies between two rows of brilliant-cut diamonds, mounted in yellow gold, with a French eagle's head assay mark and lozenge-shaped maker's mark, *ring size O*. £400-£600



163 A PAIR OF DIAMOND AND SAPPHIRE BOMBÉ EARCLIPS, 1950s-60s, the round clips in the form of multi strand ropetwist knots accented with lines of slightly graduated claw set brilliant-cut diamonds and channel set calibr -cut sapphires, mounted in yellow precious metal, in an unassociated Verdura case, earclip diameter 25mm. £1,400-£1,800



164 A PAIR OF EARSTUDS, the slightly convex discs of concentric beadwork design, in yellow precious metal, stamped '22k', diameter 20mm. £100-£120

165 A JEUX DE LIENS DIAMOND RING, BY CHAUMET, the knot motif bezel and shoulders set with small brilliant-cut diamonds, mounted in yellow precious metal, mounted signed, stamped 'Au750', numbered '1231729 49', and bearing French eagle's head assay mark and French maker's mark, ring size 1. £600-£800



166 A SILVER GILT AND GLASS CABOCHON CUFF BANGLE, BY LALIQUE, the board polished cuff spaced with three rows of collet set round cabochon golden colour glass stones, mount stamped 'Lalique' and '925', in a signed grey pouch, width 41mm.

£600-£800



167

AN EMERALD AND DIAMOND DRESS RING, CIRCA 1970s, the raised irregular cluster of claw set marquise-cut emeralds and brilliant-cut diamonds, and single-cut diamond set leaves, in wirework basket setting, mounted in white precious metal, *ring size P*. **£200-£300**



168



A DIAMOND SET ETERNITY RING, the band set round with pinched collet set brilliant-cut diamonds, mounted in white precious metal, *ring size O½*, *total diamond weight approximately 1.2 carats*. **£300-£500**

169

A DIAMOND SET DRESS RING, the navette-shaped cluster centred with a raised claw set brilliant-cut diamond, between borders of square claw set small brilliant-cut diamonds between brilliant and single-cut diamond set tapered panel shoulders, mounted in white precious metal, shank stamped '585', *principal diamond approximately 0.55 carats*, *ring size O*. **£400-£600**



170 A PAIR OF VENETIAN GEM SET EARCLIPS, BY NARDI, each with a central pear-cut emerald within a cluster surround of graduated brilliant-cut diamonds, to a border of textured flowerheads, each centred with a round-cut ruby or sapphire, within a polished border, to clip back fittings, mounted in yellow precious metal, stamped '750' and 'NARDI', length 23mm. £1,000-£1,400

The jewel house NARDI, of Venice, was founded by Giulio Nardi. Born in Florence, Giulio moved to Venice in the 1920s and opened his first jewellery shop in Piazza San Marco. Inspired by his love of the city of 'water and light', Nardi quickly gained international recognition in the post war years, attracting the attention of the 'jet-set', including Liz Taylor, Grace Kelly, Ernest Hemingway, Arthur Rubinstein etc. Patronage continued to come from the royal families of Spain and Greece, and society stars such as Marilyn Monroe and Barbara Hutton.

Today this family run business is still in the very same workshop in Piazza San Marco.



171



A DIAMOND ETERNITY RING, the band set all the way around with brilliant-cut diamonds in individual square claw settings, mounted in white precious metal, total diamond weight approximately 1 carat, ring size M $\frac{1}{2}$.

£400-£600

172

A DIAMOND PANEL RING, the rectangular ring mount with central vacant setting, baguette-cut diamond shoulders, and brilliant-cut diamond border, white precious metal mount, unmarked with unassociated loose step-cut green tourmaline, ring size O.

£200-£300



173



A DIAMOND ETERNITY RING, the band channel set with princess-cut diamonds, in plain polished 18ct white gold mount, hallmarked and bearing maker's mark 'BFD', ring size L $\frac{1}{2}$.

£260-£300

174

A DIAMOND SET DRESS RING, 1960s, of whiplash textured and polished form, accented with claw set graduated brilliant and baguette-cut diamonds, mounted in 18ct white gold, shank hallmarked, ring size Q. £400-£600



175



A PAIR OF ITALIAN 18CT WHITE GOLD EARPENDANTS, each composed of two vertically linked oval loops suspending a heart motif below, with small ruby highlight, on post fittings, stamped 'Italy', '750', length 5.2cm.

£200-£300

176

A DIAMOND CROSSOVER RING, BY BULGARI, one arm terminating in a split collet set oval-cut diamond, the other pavé set with small brilliant-cut diamonds, mounted in polished white precious metal, signed and stamped '750', oval-cut diamond weight approximately 0.5 carats, ring size M½.

£1,400-£1,800



177



TWO DIAMOND SET RINGS, the first a broad band ring, peaked to the centre and pavé set to the front with graduated brilliant-cut diamonds, in two colour mount, stamped '750'; the second a scrolled crossover ring, set with brilliant-cut diamonds, white precious metal mounted, ring sizes L½ and N. £260-£300

178

A FIVE STONE OPAL RING, the five graduated opals claw set, mounted in yellow precious metal, shank stamped '18ct', ring size M½.

£200-£300



179



TWO GEM SET RINGS, comprising an emerald and diamond set band ring, mounted in yellow precious metal, stamped '750', and an 18ct gold sapphire and diamond ring, bearing UK import marks, ring sizes L and M½. £300-£400

180

A CORAL SET RING, the oval cabochon of *corallium Rubrum* coral collet set with a band with engraved shoulders, mounted in yellow precious metal, shank stamped '916' and bearing further unidentified marks, ring size J. £100-£150

Please note coral is covered by CITES legislation and may be subject to import/export and trade restrictions.





A GROUP OF EIGHT SILVER MOUNTED 19TH CENTURY HARDSTONE FOB SEALS, each inset with a carnelian panel (five rectangular, three oval) bearing Persian inscriptions, some mounts damaged. £150-£200



A GROUP OF SEVEN 19TH CENTURY AND LATER HARDSTONE INSET INSET RINGS, each inset with a carnelian panel bearing a Persian inscription, six silver or white metal mounted, one yellow precious metal mounted, £150-£200



THREE INTAGLIO SET RINGS AND A SMALL FOB SEAL, comprising a large hardstone intaglio set ring, depicting a figure, and a smaller example depicting a deer, both mounted in white metal, a red glass intaglio of a figure in a yellow precious metal ring mount and a small bloodstone inset fob seal, the intaglio depicting a lion and a scorpion. £100-£150

-
- 184** A TWO STONE DIAMOND ANGULAR RING, the zig-zag bezel accented with two claw set brilliant-cut diamonds, to angular shoulders, mounted in white precious metal, ring size S, total diamond weight approximately 0.6 carats. £260-£360



-
- 185** A DIAMOND SET BAND RING, the polished 18ct white gold band ring spaced with rubover set brilliant-cut diamonds, bearing partial hallmark and maker's mark 'CG&S', ring size M. £300-£400



-
- 186** A SMALL DIAMOND CROSSOVER BAND RING, one arm channel set with alternate graduated baguette and brilliant-cut diamonds, the other arm with baguette-cut diamonds, mounted in white precious metal, stamped '750', ring size L. £100-£200

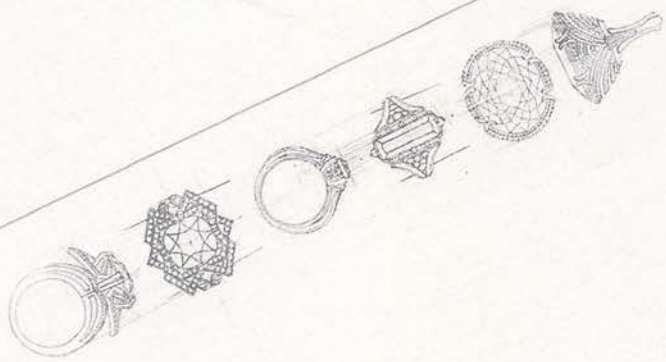


-
- 187** A CAT'S EYE TOURMALINE AND DIAMOND RING, BY KAT FLORENCE, the oval cabochon olive green cat's eye tourmaline within a stylised double surround of small brilliant-cut diamond, to similarly diamond set basket mount and tapered shoulders, each shoulder centred with a kite-shaped diamond, mounted in 18ct white gold, shank signed, hallmarked and stamped 'TM 28.97, D0.95, 18k', accompanied by a Kat Florence certificate, ring size R. £800-1200



...y...
Cat Florence™

"The jewellery we are wearing expresses
 our soul, our identity and our
 innermost desires..."



18K White Gold Ring with White Diamonds & Cats Eye Tourmaline



Item Number: 8802LR Gold Weight: 18K White Gold 7.67g Size: 40 X 24mm

GEM DETAILS

Piece(s)	Total Weight	Size
1	28.97ct	18x15mm
2	0.1ct	2.5x1.4
278	0.86ct	Mixed

Shape
 Oval
 Kite
 Round

Setting
 Prong
 Pavé
 Pa



Cats Eye Tourmaline
 White Diamonds
 White Diamonds





A PAIR OF VICTORIAN DIAMOND CLUSTER EARRINGS, the round clusters of claw set old brilliant-cut diamonds with slightly raised claw set central stones, gold mounted, to hook fittings, *cluster diameter 13mm, total diamond weight approximately 2.6 carats.*

£1,500-£2,000

189



A PAIR OF DIAMOND EARSTUDS, the brilliant-cut diamonds in simple four claw settings, mounted in white gold, stud fitting backs stamped '750', *total diamond weight approximately 0.5 carats.*

£400-£600

190

A PAIR OF DIAMOND SINGLE STONE EARSTUDS, the brilliant-cut diamonds in polished collet settings, mounted in polished white precious metal, unmarked, *total diamond weight approximately 1.65 carats.*

£1,500-£2,000





A GREEN AND WHITE PASTE RIVIÈRE CLUSTER NECKLACE, the uniform round clusters of green and white paste stones in linked white metal mounts, *length 40cm.* £140-£200

- x192 AN EDWARDIAN DIAMOND AND PEARL WREATH BROOCH, composed of trefoil clusters of claw set old brilliant-cut diamonds with pearls between, gold and silver mounted, (*pearls untested*), *diameter 27mm.* £700-£900

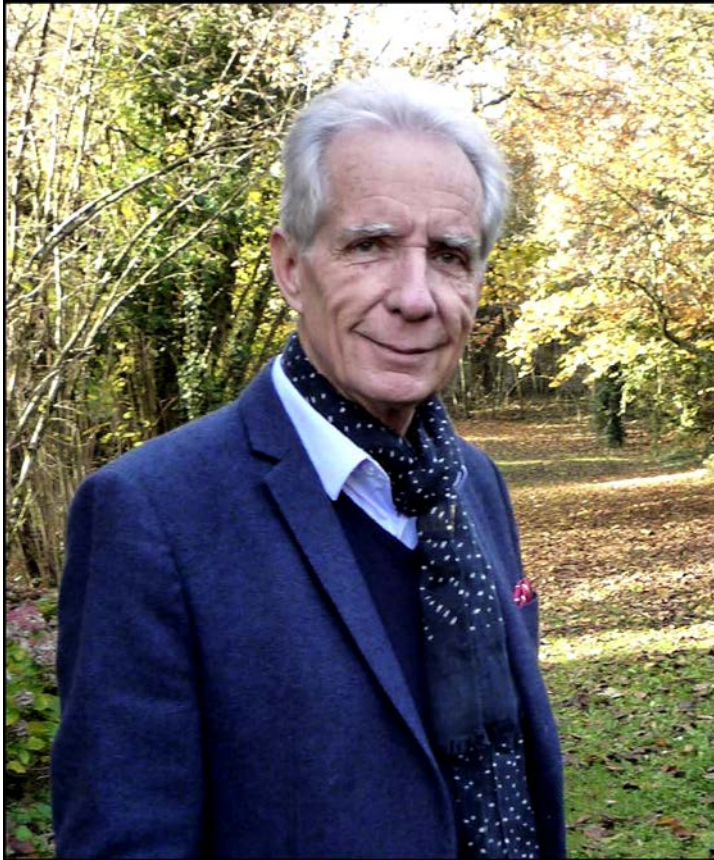


The 'Damoiselle D' Collection by Jean Muller



A Collection of Watches and Rings by the award winning French designer JEAN MULLER

Jean Muller was born in Besançon, in 1946, the 'capital' of watch design and production in France. He trained in his home town, graduating from the Fine Arts School in 1966



Jean began his career as a stylist for an international watchmaking group - he recalls his very first client in London was a certain Madame **Moussaieff**. By the 1980s, by now highly respected within the watch industry, he launched **BUGATTI's** watch brand, independently managing this project from the initial designs right through to worldwide distribution. For the past 15 years, Jean has been discreetly cooperating with many of the greatest names in Swiss watchmaking and French jewellery - including **Mauboussin, Louis Vuitton, Mont Blanc, Dior, Chopard, Girard Perregaux and Tag Heuer**, his company now working in alliance with master watchmaker Bruno Saville, their workshops located in Le Locle (Switzerland). Highly acclaimed within the watch industry, in 2000 Jean was awarded the **INPI Innovation Trophy**. In 2005 he received 3rd Prize in the **Deloitte Technology Fast 50 awards** and the following year, the **Gazelle 2005 Award** from the French Ministry of SMEs, commerce, trade and liberal professions. Now retired, Jean has passed on the management of the family firm to his son, **Benjamin Muller**, who continues to develop and expand the business as a luxury watch brand in new exciting directions, having just launched his own new 'Spyder' collection of watches. A modest and quietly spoken man, Jean confesses to being an unashamed romantic. His designs for the '**Damoiselle D' Collection** of watches and rings were inspired by his wife, and his love of flowers and nature. The Collection is unique - all the watches and rings were personally designed by Jean, and are offered for sale here in new, unused condition.



193 JEAN MULLER: A 'DAMOISELLE D' CAPUCINE RING, the 18ct white gold, sapphire and diamond flowerhead dress ring, pavé set to the centred with round mixed-cut sapphires within a rotating bezel of brilliant-cut diamond edged petals, the shank numbered '53' 'D' A15, maker's mark and French eagle's head guarantee mark, *ring size M½*.
£500-£700

194 JEAN MULLER: A 'DAMOISELLE D' CAPUCINE RING, the 18ct rose gold flowerhead with central diamond panel, pavé set, the swivelling surround composed of diamond edged petals, the shank stamped '53 D A16', *ring size M*.
£500-£700



195



JEAN MULLER: A 'DAMOISELLE D' ROSA RING, the 18ct white gold ring centred with an Akoya white cultured pearl edged by brilliant-cut diamonds within a twin row loop diamond set petal border, to tapering polished shank, the inner shank stamped '53 D A10', stamped with maker's mark and French eagle's head guarantee mark, *ring size M (leading edge)*. £500-£700

196

JEAN MULLER: A 'DAMOISELLE D' ROSA RING, the 18ct rose gold ring centred with an Akoya white pearl edged by brilliant-cut diamonds within a twin row loop petal border, to tapering polished shank, the inner shank stamped '53 D A12', with maker's mark and French eagle's head guarantee mark, *ring size M (leading edge)*. £400-£600



197



JEAN MULLER: A 'DAMOISELLE D' ROSA RING, the 18ct white gold ring centred with a Tahitian black pearl edged by brilliant-cut diamonds within a twin row loop petal border, to tapering polished shank, the inner shank stamped '53 D A11', stamped with maker's mark and French eagle's head guarantee mark, *ring size M (leading edge)*. £400-£600

198

JEAN MULLER: A 'DAMOISELLE D' ROSA RING, the 18ct yellow gold ring centred with an Akoya white pearl edged by brilliant-cut diamonds within a twin row loop petal border, to tapering polished shank, the inner shank stamped '53 D A01', with maker's mark and French eagle's head guarantee mark, *ring size M (leading edge)*. £400-£600



199



JEAN MULLER: A 'DAMOISELLE D' ROSA RING, the 18ct white gold ring centred with an Akoya white pearl edged by brilliant-cut diamonds within a twin row loop petal border, to tapering polished shank, the inner shank stamped '53 D A08', with maker's mark and French eagle's head guarantee mark, *ring size M (leading edge)*. £400-£600



200



JEAN MULLER: A 'DAMOISELLE D' ROSA WRISTWATCH, the small sized 18ct white gold watch with pavé diamond 'snow' set dial, blued steel hands, within a diamond bezel and brilliant-cut diamond edged stylised petals, reverse signed and stamped with maker's mark, with eagle's head guarantee mark, stamped '750' and 'Proto No 00/00,', with Swiss quartz movement, on black satin leather lined strap and diamond set buckle clasp, *diameter 24mm.* **£700-£900**

The 'snow' setting comprises 11 different diamond diameters, randomly placed and mounted by hand. This watch is a unique model -no other identical model was made.

201

JEAN MULLER: A 'DAMOISELLE D' ROSA RED CORAL WRISTWATCH, the 18ct rose gold watch with pavé set diamond dial, blued steel hands, with , rose-gold hands, within a brilliant-cut diamond bezel and stylised red coral inset petals, the reverse signed and stamped with maker's mark, European convention guarantee mark, stamped '750' and 'MR1R1A No 02', with four screw heads to the case, Swiss quartz movement, on leather-lined black satin strap, and diamond set buckle clasp, *diameter 28mm.* **£600-£800**



Please note coral is covered by CITES legislation and may be subject to import/export and trade restrictions.

202



JEAN MULLER: A 'DAMOISELLE D' ROSA WRISTWATCH, the 18ct rose gold watch with mother o' pearl dial, three diamond set numerals, rose gold hands, within a brilliant-cut diamond bezel and stylised petal border, the reverse signed and stamped with maker's mark, European convention guarantee mark, stamped '750' and 'MROR1N No 12', stamped '*le temps précieux*', with four screw heads to the case, Swiss quartz movement, on black satin pink leather-lined strap and diamond set buckle clasp, *diameter 28mm.* **£500-£700**

203

JEAN MULLER: A 'DAMOISELLE D' ROSA GREEN ENAMELLED WRISTWATCH, the 18ct rose gold watch with green 'grand-feu' enamel dial with sun motif engraving, rose-gold hands, within a brilliant-cut diamond bezel and stylised petal border, the reverse signed and stamped with maker's mark, European convention guarantee mark, stamped '750' and 'MROR1E No 05', with four screw heads to the case, Swiss quartz movement, on black satin pink leather-lined strap and diamond set buckle clasp, *diameter 28mm.* **£500-£700**



204



JEAN MULLER: A 'DAMOISELLE D' ROSA WRISTWATCH, the 18ct white gold watch with mother o' pearl dial, three diamond set numerals, rhodium plated hands, within a brilliant-cut diamond bezel and stylised petal border, the reverse signed and stamped with maker's mark, European convention guarantee mark, stamped '750' and 'MROG1N No 15', stamped '*le temps précieux*', with four screw heads to the case, Swiss quartz movement, on black satin pink leather-lined strap and diamond set buckle clasp, *diameter 28mm.* **£500-£700**



205



JEAN MULLER: A 'DAMOISELLE D' CAPUCINE WATCH, the 18ct rose gold and diamond watch, with circular signed mother o' pearl dial, three diamond set numerals, rose gold hands, within brilliant-cut diamond border, and outer rotating bezel of diamond edged petals, reverse stamped '*Le temps précieux*', signed with maker's mark, European convention guarantee mark, numbered 'MC0R1N No 06', with four screw heads to the case, on black satin pink leather lined strap with diamond set buckle, case diameter 35mm. £700-£900

206

JEAN MULLER: A 'DAMOISELLE D' CAPUCINE WATCH, the 18ct white gold and diamond watch, with circular diamond pavé set dial, three diamond set numerals, blue steel hands, within brilliant-cut diamond border, and outer rotating bezel of diamond pavé petals, reverse stamped '*Le temps précieux*', signed with maker's mark, European convention guarantee mark, numbered 'MCOG1A No 10', with four screw heads to the case, on black satin pink leather lined strap with diamond set buckle, case diameter 35mm. £1,000-£1,200



207



JEAN MULLER: A 'DAMOISELLE D' OVALE TURQUOISE BLUE ENAMEL WATCH, the 18ct rose gold, oval shaped watch with central round dial of turquoise blue 'grand feu' enamel dial against a radiating sun design, rose gold hands, within a brilliant-cut diamond set bezel, and outer sweep border of graduating diamonds, reverse stamped with maker's mark, European convention guarantee mark, '750', numbered 'MOOG1E No. 06', with four screw heads to the reverse of the case, on black satin lined pink leather strap with diamond set buckle, dimensions width 23 mm, height 29mm. £400-£600

208

JEAN MULLER: A 'DAMOISELLE D' OVALE BLUE ENAMEL WATCH, the 18ct white gold, oval shaped watch with the central round dial of blue 'grand feu' enamel dial, rhodium plated hands, within a diamond set bezel, and outer sweep border of graduating diamonds, reverse stamped with maker's mark, European convention guarantee mark, '750', numbered 'MOOG1E No. 03', with four screw heads to the reverse of the case, on black satin lined pink leather strap with diamond set buckle, dimensions width 23 mm, height 29mm. £400-£600

This particular example from the Damoiselle D Collection is a unique piece - no other identical model was made.






Damoiselle D
— le temps précieux —



SPORTING INTEREST: A PAIR OF 18CT GOLD AND ENAMEL JOCKEY CAP CUFFLINKS, the three-dimensional jockey cap terminals decorated in black and green enamel, to swivel back fittings, in yellow precious metal, stamped 'Gucci' and '750', *cap length 22mm.* £600-£800

These cufflinks were previously owned by Victor Morely Lawson, the owner of the 1974 winner of the Cesarewitch, Ocean King. In 1973, aged 67 Morely Lawson had ridden Ocean King himself and won the Corinthian Stakes at Warwick as an amateur jockey (his ambition for 30 years). Another of his horses, Popsis Joy, won the 1980 Cesarewitch, ridden by Lester Piggott.

210



A PAIR OF ENAMEL AND DIAMOND CUFFLINKS, the oval panels decorated with blue guilloché enamel, to a white enamel border and supporting central collet set brilliant-cut diamond, to swivel back fittings, mounted in yellow precious metal, stamped '750', *panel dimensions 18.5 x 14mm.* £600-£800

211

A PAIR OF CUFFLINKS, the round panels with brushed finish, to polished reeded swivel backs, in white precious metal, stamped '750', *disc diameter 17mm, weight 15gm.* £300-£500



212



A PAIR OF CUFFLINKS, retailed by David Morris, the polished rectangular panels with applied reeded detail, to swivel back fittings, in yellow precious metal, unmarked, *panel dimensions 15.5 x 14mm.* £400-£600

-
- 213** TWO GEM SET PENDANTS, the first a cultured pearl and diamond pendant, mounted in white precious metal, stamped '750', on chain textured baton-link chain, clasp stamped 'Au 750', together with a small cross pendant composed of claw set brilliant-cut diamonds. £300-£360



-
- 214** A DIAMOND SET DRESS RING, the central cushion-cut diamond, weighing approximately 1.6-1.7 carats, in raised claw setting, above outer square border of smaller old-cut diamonds, to wirework mount and shank in white precious metal, unmarked, ring size M (leading edge). £1,000-£1,500



215 A LONG BELCHER-LINK CHAIN NECKLACE IN WHITE PRECIOUS METAL, detaching into two shorter chains, together with a hair comb set with imitation half pearls, each stamped '925', total necklace length 114cm. £100-£200

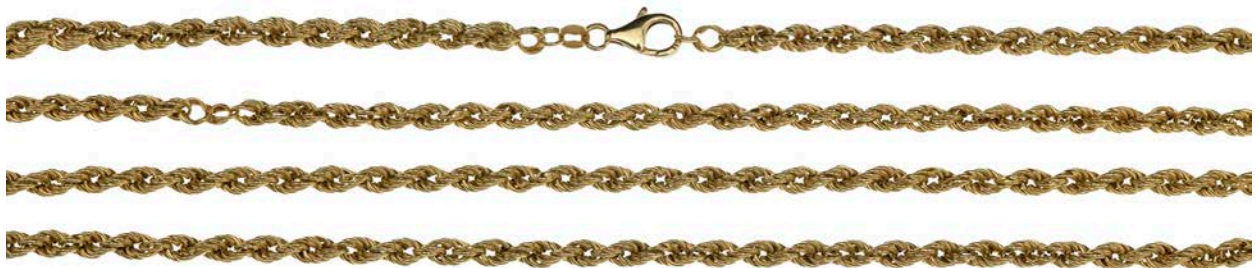


216



A 9CT GOLD LONG CHAIN NECKLACE, of flattened curb-link form, bearing UK import marks and maker's mark 'SJS', clasp damaged, length 63cm. £150-£200

217



A ROPETWIST CHAIN NECKLACE, the uniform ropetwist chain in yellow precious metal, length 88cm. £300-£320

218



A 9CT GOLD CHAIN AND A 9CT GOLD TOOTHPICK, the chain of square section baton links and ropetwist belcher links, clasp hallmarked, the engine-turned retractable tooth pick hallmarked and bearing maker's mark 'A&CoLtd', chain length 70.5cm. £200-£300



A **PORTUGUESE GOLD BRACELET**, the fancy chain link bracelet with beaded borders and applied burr detail, accented with collet set round-cut garnets, clasp bearing gold 800 standard mark for Oporto, post 1938, *bracelet length 17.5cm.*

£800-£1,200

220

A **RUBY AND DIAMOND SET BANGLE**, the round section hollow hinged bangle with central openwork detail set with round-cut rubies and brilliant-cut diamonds, mount stamped '916', *internal bangle width 54mm.*

£400-£600



221 A TWO ROW CULTURED PEARL NECKLACE WITH DIAMOND CLASP, the two rows of uniform cultured pearls to a scrolled clasp set with brilliant and baguette-cut diamonds, mounted in white precious metal, stamped '14k', average pearl diameter 9mm, necklace length 59cm. £800-£1,000



222 A TWO ROW GRADUATED CULTURED PEARL NECKLACE WITH A GEM SET CLASP, the two rows of slightly graduated cultured pearls to a round cluster clasp set with half pearls, and round mixed-cut and cabochon gemstones, including blue zircon, emerald and ruby, mounted in yellow precious metal, stamped '14k', necklace length 36cm. £300-£500

223 A FRESHWATER PEARL SET BANGLE, the openwork hinged bangle in yellow precious metal, unmarked, supporting flowerhead clusters of baroque freshwater pearls, bangle diameter 57mm. £200-£300





- 224** A SMALL CHARM BRACELET SUSPENDING A CARTIER CHARM, the textured fetter-link chain bracelet in 18ct gold, suspending five charms, including an 18ct gold ingot pendant, by Cartier, an enamelled fish charm, stamped '750' and two further charms hallmarked for 9ct gold, bracelet length 16cm. £100-£150



- 225** AN 18CT GOLD AND CULTURED PEARL BRACELET, BY CARTIER, the single row of uniform pearls to a central dolphin motif in yellow gold with emerald eyes, signed, stamped '750' and numbered '760592', to a polished pierced tonneau-shaped clasp, signed, bearing European convention marks and maker's mark 'JC', in a signed Cartier case, bracelet length 17cm. £800-£1,000



A NEPHRITE JADE PANEL BRACELET AND A SIMILARLY SET CROSS PENDANT, the bracelet of reeded nephrite jade panel links, with openwork links between in the form of Chinese characters, mounted in yellow precious metal, clasp stamped '14k'; the cross pendant similarly set and mounted in yellow precious metal, unmarked, *bracelet length 19.5cm.* £220-£260



A MATCHED SUITE OF JADE AND DIAMOND JEWELLERY, comprising a pair of drop eardrop, a cluster ring, a drop pendant necklace, on fine curb-link chain, each set with oval jade cabochons in scrolled diamond set mounts, together with a cabochon jade and diamond set foliate spray brooch, all mounted in white precious metal, the earrings, pendant and brooch all stamped 'plat' and 'S.P.H.Des', the ring indistinctly marked, chain clasp stamped '18ct', (all jade untested), *pendant length 43mm, brooch length 57mm, ring size K.* £1,500-£2,000

228

A GRADUATED JADE BEAD NECKLACE, the graduated spherical jade beads to a shaped millegrained clasp set with rose-cut diamonds and calibr -cut sapphires, mounted in white precious metal, (*jade untested and unwarranted*), necklace length 93cm. £500-£700



229



A PAIR OF EARLY 20TH CENTURY JADE DROP EARPENDANTS, the pierced carved rectangular jade drops on polished tapered baton suspensions from millegrained collet set half pearl surmounts, to hook fittings, mounts with applied plaques stamped '15', in semi fitted period case, (*jade untested and unwarranted*), length 49mm. £200-£300

230

A JAPANESE CINNABAR LACQUER PENDANT, the shaped rectangular panel carved each side to depict three children playing, against a background of trees and rocks, on a woven silk suspension accented with seed pearls and a spherical green quartz bead, lacquer panel dimensions 66 x 44mm. £100-120



- 231** A PINK SAPPHIRE RING, BY PIORAY, the spherical bezel pavé set with round-cut pink sapphires, above a polished domed band ring, mounted in yellow precious metal, stamped '750' and signed, ring size E with sizing beads. £200-£300



- 232** A 1960s SAPPHIRE SET BAND RING AND AN AMETHYST DRESS RING, the band ring of textured abstract form accented to the front with five marquise-cut sapphires, mounted in 9ct gold, hallmarked and bearing maker's mark 'CJLd', the second ring set with an oval cabochon amethyst within pierced Greek key border, mounted in yellow precious metal, stamped '18K', first ring size M. £200-£300



- 233** THREE DIAMOND AND HARDSTONE RINGS, two rings peaked to the front and centred with a band of pavé set brilliant-cut diamonds between polished hardstone shoulders - turquoise and tiger's eye quartz, mounted in yellow precious metal, stamped '585'; the third of similar design, set with onyx and mounted in white precious metal, ring sizes M, O and K respectively. £260-£300



- 234** A 9CT GOLD MOUNT CRYSTAL GEODE BROOCH, BY ALBION CROFT Co. LTD, the blue-grey and white crystal geode claw set in an abstract 9ct gold mount, hallmarked for London, 1968, and bearing maker's mark 'A C.Co', length 39mm. £300-£400



235



A CITRINE FRINGE NECKLACE, composed of graduated briolette-cut citrine beads, to a white precious metal clasp, *necklace length 48-50cm.* £200-£300

236



A MODERNIST GOLD MOUNTED RING AND BRACELET SUITE, the bracelet composed of polished disc links each centred with a triangular-cut red stone, mounted in yellow precious metal, the bombé ring of corresponding design, *bracelet length 18cm, ring size K½.* £400-£600

237



AN 18CT GOLD AND DIAMOND SPRAY BROOCH, 1950s, the stylised wirework spray accented with small brilliant-cut diamonds, mount stamped '750' and bearing maker's mark 'CLRo', *length 48mm.* £200-£300



238 TWO OPAL STICKPINS, the first claw set with an oval cabochon opal, the second millegrain collet set, both mounted in yellow precious metal, the second stamped '15ct', both cased.
£360-£460



239 A DIAMOND STICKPIN, the terminal composed of an oval-shaped rose-cut diamond in an open claw setting, mounted in yellow and white precious metal, in a case signed 'R. French, Glasgow'.
£240-£280



240 A RUBY AND DIAMOND STICKPIN/STUD, CASED, AND TWO FURTHER STICKPINS, the first centred with a half pearl in a flowerhead surround of alternate mixed-cut rubies and old brilliant-cut diamonds, with interchangeable stud and stickpin fittings, in fitted case, together with a ruby and seed pearl set stickpin, mount stamped '15ct' and a seed pearl set knot stickpin, stamped '14k'.
£200-£300



241 AN OPAL AND DIAMOND STICKPIN, cased, the tapered polished opal bead in shaped cup setting above a millegrained collet set old brilliant-cut diamond, mounted in gold and silver, case signed 'James Aitchison', stickpin terminal length 17mm.
£200-£300





AN AMETHYST RIVIÈRE NECKLACE, composed of oval mixed-cut amethysts in individual collet and claw settings, together with an additional flowerhead section, the amethysts of conforming size and similar mountings, (one stone lacking), in Mappin & Webb gilt tooled leather case, necklace length 48cm. £900-£1,200



A CULTURED PEARL AND LAPIS LAZULI LONG NECKLACE, the necklace composed of faceted lapis lazuli beads and baroque freshwater cultured pearls, spaced with spectacle set oval faceted lapis lazuli, *length 95cm*. £100-£150

244



A PAIR OF MABÉ PEARL EARCLIPS, mounted in ropetwist borders of white precious metal, with hinged clips, stamped '14k', *diameter 2.3cm*. £100-£150

245

A PAIR OF SOUTH SEA BLACK CULTURED PEARL EARSTUDS, the black cultured pearls in gadrooned white precious metal mounts, to stud fittings with screw on butterfly backs, *pearls diameter 11mm*. £100-£150



246



A CULTURED PEARL AND DIAMOND RING, CIRCA 1960s, the high dress ring centred with a dark grey cultured pearl above a flowerhead surround of graduated brilliant-cut diamond set petals, to reeded shank, mounted in white precious metal, *ring size O*. £300-£400



A TWO COLOUR CULTURED PEARL AND DIAMOND NECKLACE AND MATCHING RING, the three row belcher-link chain necklace to a small round diamond centrepiece, suspending two tassel drops each with a black or white cultured pearl terminal in a diamond set cap, together with a matching crossover ring with pavé set diamond shoulders, necklace clasp and ring shank stamped '750', necklace length 41.5cm, ring size N. £800-£1,200



A DIAMOND SET FLEXIBLE RING, of ropetwist hoop and knot-link chain form, accented with collet set brilliant-cut diamonds, total diamond weight approximately 0.8 carats, ring size O. £600-£700

249



A PAIR OF CHRYSOPRASE SET EARCLIPS, the oval cabochon chrysoprase claw set within a border of seed pearls, to a pierced bead and wirework surround, clip fittings stamped '14k', length 33mm. £150-£200

250

A PAIR OF DIAMOND SET SPHERICAL EARCLIPS, the hinged openwork earclips of woven spherical design, the front halves set with brilliant-cut diamonds, mounted in white precious metal, stamped '750', diameter 19mm. £300-£400



251 A DIAMOND RIVIÈRE NECKLACE, SIGNED **MOBOCO**, composed of 131 slightly graduated brilliant-cut diamonds in linked claw settings, to a small hinged panel clasp set with brilliant and baguette-cut diamonds, clasp stamped '10% IRID PT' for platinum and '750', signed and bearing maker's mark 'MB', in signed Moboco green leather case, total diamond weight approximately 22.4 carats, necklace length 50cm. £15,000-£20,000

MOBOCO are jewellers from Newport Beach, Florida, who specialise in fine diamond jewellery.

The necklace is accompanied by a copy of the 'Certificate of Appraisal' from Moboco, dated 8 March 1996, Report No: MB7801, estimating the gradings of the 131 diamonds as F colour and VVS1 clarity, the weights for the individual diamonds ranging from approximately 0.30 to 0.10 carats. The diamond weight of the clasp is estimated at 0.54 carats.



252 A DIAMOND ETERNITY RING, the band composed of rub over collet set uniform brilliant-cut diamonds, mounted in white precious metal, ring size P, total diamond weight approximately 3.75 carats. £1,600-£1,800



253 A DIAMOND PANEL RING, the raised oval panel pavé set with graduated brilliant-cut diamonds, to a broad textured band with raised borders, stamped '14k', ring size N (leading edge), total diamond weight approximately 1.45 carats. £500-£700



254 A DIAMOND FULL ETERNITY RING, claw set throughout with brilliant-cut diamonds, in white precious metal setting, unmarked, ring size L. £500-£700





A PAIR OF SAPPHIRE AND DIAMOND EARPENDANTS, each oval mixed-cut sapphire drop in split collet setting, on an articulated suspension of three linked collet set brilliant-cut diamonds, to stud fittings, mounted in white precious metal, stamped '750', length 21mm. £1,000-£1,200

256

A SAPPHIRE AND DIAMOND HOOP RING, the oval mixed-cut sapphire in split collet setting, to a band channel set all round with baguette-cut diamonds, mounted in white precious metal, unmarked, ring size L½. £1,000-£1,500



257

A FIVE STONE DIAMOND RING, the five graduated brilliant-cut diamonds in a Victorian style mount with scrolled gallery, mounted in 18ct yellow gold, shank hallmarked, ring size N, total diamond weight approximately 1.25 carats. £500-£700



x258



A FIVE STONE DIAMOND RING, the five graduated old-cut diamonds in open claw settings, mounted in yellow precious metal, shank stamped '18ct', ring size P, total diamond weight approximately 1.7 carats. £800-£1,200

259

A DIAMOND AND MOONSTONE FLOWERHEAD CLUSTER RING, the central cabochon moonstone collet set within a surround of old-cut and brilliant-cut diamonds, to yellow precious metal shank, ring size N½. £280-£320



260 A COLUMBIAN EMERALD AND DIAMOND SET DRESS RING, the step-cut emerald in raised four claw setting, between angled panels pavé set with brilliant-cut diamonds, in yellow precious metal setting, shank stamped '750', with report from GCS, emerald weight approximately 2.5 carats, total diamond weight approximately 2 carats, ring size J. **£4,000-£6,000**

The report from the Gemmological Certification Services, dated 19th February 2019, No: 79201-47, states that the emerald is of Columbian origin 'with indications of minor clarity enhancement'.





261 AN OPAL GRADUATED BEAD NECKLACE, the graduated spherical polished milky opal beads with faceted crystal spacers between, to plain cylindrical clasp '9ct', necklace length 43.5cm. £600-£800



262 AN EARLY 20TH CENTURY SAPPHIRE PENDANT, the central cabochon sapphire collet set within an outer circular border, suspending a knife-edge bar below, applied with a pearl highlight, and terminating in an oval cabochon sapphire set drop of conforming design, two colour precious metal mounted, unmarked, (pearl untested for origin), on fine trace-link back chain, to ring and bolt clasp, with unassociated box, pendant length 4.2cm. £260-£360

263 A SYNTHETIC SAPPHIRE DRESS RING, the oval mixed-cut stone in four claw setting, white precious metal mounted, (shank misshapen), ring size approximately M. £100-£160



264 A LATE VICTORIAN GOLD MOUNTED SAPPHIRE AND DIAMOND HINGED BANGLE, the upper section set with graduating oval mixed-cut sapphires spaced by pairs of old-cut diamonds, the mount scroll engraved, between triple knife-edge style shoulders and back section, inner diameter 5.8cm. £3,600-£4,600





A FRENCH ART DECO STYLE EMERALD, SAPPHIRE AND DIAMOND BROOCH, the shaped rectangular brooch of pierced geometric design, set with rose, single and brilliant-cut diamonds, and fancy-cut emeralds and sapphires, mounted in yellow and white precious metal, stamped '66910' and bearing indistinct French lozenge marks, length 52mm. **£800-£1,200**

266 **A SOLITAIRE DIAMOND RING**, the brilliant-cut diamond, weighing 3.09 carats, claw set within a domed tapered pierced mount millegrain set throughout with rose-cut diamonds, mounted in white precious metal, unmarked, accompanied by a BGI gem report, ring size N. **£5,000-£7,000**







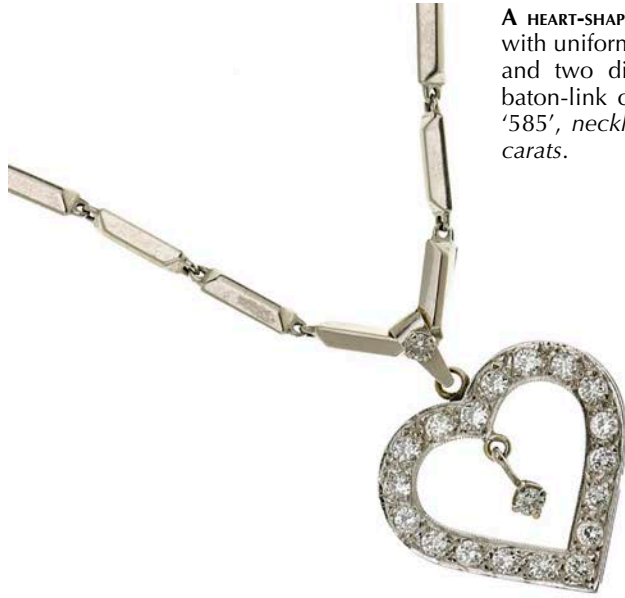
A DIAMOND SET NECKLACE AND MATCHING BRACELET, the chevron-link chain necklace with beaded borders, to a central flowerhead diamond cluster, between claw set brilliant-cut diamond shoulders, clasp stamped '18k Italy', together with matching bracelet, unmarked, necklace length 46.5cm, bracelet length 18cm. £1,500-£2,000

A DIAMOND AND CULTURED PEARL PENDANT ON CHAIN, the cultured pearl drop in diamond set cap, suspended within a diamond set scrolled ribbon hoop surround, mounted in white precious metal, stamped '18k', to a fine curb-link chain, clasp stamped '585', pearl untested for saltwater vs. freshwater origin, pendant length 41.5mm. £300-£500



A PAIR OF CULTURED PEARL AND DIAMOND SET EARPENDANTS, the articulated drops and ribbon loop surmounts set throughout with old single-cut diamonds, to cultured pearl drop terminals, in polished reeded caps, mounted in white precious metal, with hinged back stud fittings, length 46mm. £300-£400

270



A HEART-SHAPED DIAMOND SET PENDANT, the heart-shaped hoop pendant set with uniform brilliant-cut diamonds, with central claw set diamond drop and two diamond set bale, suspended on a hollow square-section baton-link chain, all mounted in white precious metal, clasp stamped '585', necklace length 58cm, total diamond weight approximately 2.4 carats. £600-£800

271

A RUBY 'BALLERINA' DRESS RING, the central claw set oval mixed-cut ruby within a double undulating surround of tapered baguette-cut rubies, with a small cluster of four small claw set brilliant-cut diamonds to each shoulder, mounted in yellow precious metal, indistinctly stamped '[7]50', ring size O. £500-£600



272



A RUBY AND DIAMOND HORSESHOE BROOCH, channel set with alternating rows of old brilliant-cut diamonds and calibr -cut rubies, mounted in yellow and white precious metal, length 36mm. £500-£700

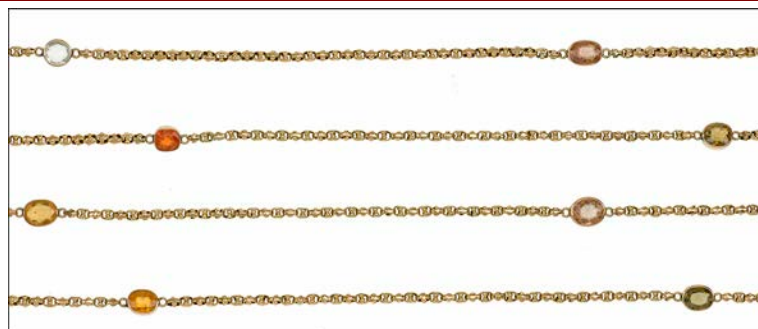


273 A CHALCEDONY AND ENAMEL 'MALTESE CROSS' PENDANT, PROBABLY RUSSIAN, the polished chalcedony arms in blue, black and white enamel decorated mounts, with open beadwork heart-shaped motifs between, to central round cabochon chalcedony, to a scrolled foliate gold mount, indistinct marks, and plain suspensory loop, *width 53mm.* £400-£600



A LARGE MULTI GEM SET CROSS PENDANT, the polished yellow precious metal Lain cross claw set with mixed-cut and cabochon gemstones, including two alexandrites, sapphires of various hues including blue and pink, moonstone, etc, *the alexandrites weigh approximately 3.5 and 2.25 carats respectively, pendant length 11.7cm.* **£1,000-£1,500**

The two alexandrites have had a verbal report from GCS laboratory confirming they are natural chrysoberyl (variety Alexandrite), with no indications of treatment.



A 9CT GOLD LONG GEM SET GUARD CHAIN, the fancy-link chain spaced with spectacle set vari coloured gemstones, to swivel clasp, stamped '9c', length 162cm. **£400-£500**

-
- 276** A PAIR OF ITALIAN 18CT YELLOW GOLD EARPENDANTS, each composed of two vertically linked oval loops suspending a heart motif below, with small ruby highlight, on post fittings, stamped 'Italy', '750', length 5.2cm.
£200-£300



-
- 277** A PAIR OF DIAMOND SET HEART HOOP EARRINGS, the oval hinged hoop earrings with central heart motif spaced with gypsy set brilliant-cut diamonds, mounted in yellow precious metal, stamped 'CB' and '750', length 38.5mm.
£200-£300



-
- 278** A DIAMOND SET HEART BRACELET, composed of two polished half bangle links with a heart-shaped link to the front spaced with small gypsy set brilliant-cut diamonds, and a hoop link to the back suspending a group of small heart, star, crescent and flowerhead-shaped charms, each centred with a small diamond, mounted in yellow precious metal, clasp stamped '750', bracelet length 17.5cm.
£500-£700





279 AN AQUAMARINE SET NECKLACE BY **PUIG DORIA**, the three row belcher-link chain necklace to central collet set heart-cut aquamarine, suspending two unequal length chain drops, each with a collet set pear-cut aquamarine terminal, mounted in yellow precious metal, signed 'Puig Doria' and stamped '750', necklace length 61.5cm. **£500-£700**

PUIG DORIA is a Spanish Jewel House, founded in 1948 by **José Maria Puig Doria** who set up his first jewellery workshop on Cale Provenza, Barcelona. By 1958,, he bought the ground floor of the premises, where he exhibited and sold his designs. By 1969, the company had expanded considerably and relocated to its current premises, Avenida Diagonal 612. In 1976, with business continuing to grow, a new store was opened in Geneva and in 1984 in Japan, with three years later, a flagship store in the very centre of Barcelona and another in Valencia.

Jose's jewellery has been characterised as combining the '*precious and the trivial, the natural and the industrial, the exquisite and the mundane*', by combining new materials, such as coconut, ebony, titanium, even egg shell, with precious metals and gemstones. He received numerous awards and accolades during his long career, the highlight being in 2002 when he was presented the *Creu de Sant Jordi Award*, one of the highest civil distinctions awarded in Catalonia. He died in 2006 and the business continues under the management of the next generation of the family, Cristina and Beth Puig Doria together with José's son, José Maria Puig Doria.



280 A DIAMOND AND SYNTHETIC SPINEL PENDANT, on seed pearl necklace, the rectangular mixed-cut blue synthetic spinel millegrain collet set on a knife-edge baton suspension accented with two similarly set brilliant-cut diamonds, on a three row seed pearl necklace, spaced with woven seed pearl beads, pendant length 42mm. **£300-£500**

281

AN AMERICAN ART DECO STYLE SAPPHIRE AND DIAMOND RING, the pierced geometric bezel centred with three brilliant-cut diamonds, with further smaller brilliant-cut diamonds and channel set calibr -cut sapphire accents, mounted in white precious metal, shank stamped 'Dreicer', '14K' and 'D12', ring size K. **£400-£600**



282

A SINGLE STONE DIAMOND RING, the brilliant-cut diamond claw set between baguette-cut diamond set shoulders, mounted in white precious metal, stamped 'plat' and numbered '2263', principal diamond approximately 7.9 carats, ring size S. **£12,000-£15,000**





283

AN EMERALD AND DIAMOND CLUSTER RING, the oval mixed-cut emerald claw set within a surround of brilliant-cut diamonds, wirework basket mount, shank stamped '750', ring size M½.

£600-£700



284



TWO DIAMOND SET RINGS, the first comprising three rows of claw set brilliant-cut diamonds, mounted in 9ct gold, shank hallmarked; the second with three graduated illusion set brilliant-cut diamonds, in two colour mount, shank stamped '18ct&pt', first ring size L.

£400-£500

285

AN EMERALD AND DIAMOND CLUSTER RING, the oval mixed-cut emerald claw set within a surround of brilliant-cut diamonds, between scrolled shoulders, mounted in 18ct yellow gold, shank hallmarked, ring size M.

£300-£400



286 AN EMERALD AND DIAMOND HEART-SHAPED PENDANT, BY KUTCHINSKY, the heart-cut emerald collet set within a triple surround of channel set graduated brilliant-cut diamonds, to an oval brilliant-cut diamond set bale, mounted in yellow gold, reverse signed, bearing maker's mark and stamped '750', pendant length 36.5mm. £5,000-£7,000





287 A LATE 19TH CENTURY SAPPHIRE AND DIAMOND PENDANT, the scrolled shaped hoop with three tapered drops below set throughout with graduated old brilliant-cut diamonds, supporting a central cabochon sapphire and diamond cluster drop, suspended from a pinched collet set old brilliant-cut diamond surmount, mounted in gold and silver, lacking bale, *pendant length 51.5mm.* £1,400-£1,600

288 A SAPPHIRE AND DIAMOND PANEL RING, the square panel set with five mixed-cut sapphires with pairs of old-cut diamonds between, to collet set single stone diamond shoulders, mounted in white precious metal, shank stamped '18ct' and 'plat', ring size O. £300-£400



289 A DIAMOND OCTAGONAL-CUT SOLITAIRE RING, the diamond in four claw setting, to millegined single-cut diamond set gallery and shoulders, mounted in white precious metal, principal diamond 1.70 carats, ring size K. £3,000-£5,000





A **SAPPHIRE AND DIAMOND BRACELET**, composed of linked collet set brilliant-cut diamonds and round-cut sapphires, mounted in yellow precious metal, clasp stamped '750', bracelet length 18.5cm. **£600-£800**

-
- 291** A **9CT GOLD ENAMELLED BIRDS' NEST NOVELTY BROOCH**, the brooch modelled as a pair of polychrome enamelled birds tending a nest containing half pearl eggs, surrounded by foliage and an enamel and garnet flowerhead, mounted in 9ct yellow gold, hallmarked, length 49mm. **£100-£150**



Ancient Jewellery and Antiquities



Ancient Jewellery and Antiquities

-
- 292** A MEDIEVAL GOLD AND GARNET SET STIRRUP RING, the yellow gold ring centred with a cabochon garnet, *ring size Q½*. £500-£700



-
- 293** A 3RD CENTURY AD ROMAN GOLD AND INTAGLIO GARNET RING, the solid tapered band inset with a cushion-shaped cabochon garnet intaglio carved with the image of a grasshopper or cricket, *ring size approximately L*. £500-£700





A 16TH CENTURY GOLD POSY RING, the exterior chased with nautilus shells and six petal flowerhead, the interior inscribed in Roman capitals 'In silenc and in hope' (sic), *ring size H*. £1,500-£2,000

This ring was discovered by the finder in October 2017. It has been disclaimed as treasure and is recorded on the Portable Antiquities Scheme database, ref: ESS-1C413B.

This unusual posy is not recorded in Joan Evan's reference work 'Posy rings'. It is possible taken from the Douay-Rheims bible, Isiah 30:15 - "For thus saith the Lord God the Holy One of Israel: If you return and be quiet, you shall be saved: in silence and in hope shall your strength be." The Douay-Rheims Bible was a English translation of the Latin Vugate for the Catholic Church. The Old Testament being published in 1610.

295 **A LATE MEDIEVAL OVAL GARNET SET GOLD RING, CIRCA 1300-1500**, the oval cabochon garnet in closed back collet setting, between tapering shoulders with applied bead and burr detail, *ring size S*. £400-£600

This ring was discovered in Stow, Lincolnshire, in August 2016. It has been disclaimed as treasure (ref: 2016-T626) and is recorded on the PAS database, ref: LANCUM-1CA6A2. The shank to the ring has been repaired since being disclaimed.



296



A POST MEDIEVAL SILVER GILT POSY RING, the silver band with geometric patterned exterior, the gilt interior inscribed 'NEVER TO CHANGE' in seriffed Roman capitals, *ring size P*.
£100-£150

297

A ROMAN GOLD CHERUB PENDANT, CIRCA 3RD CENTURY AD, the pendant, originally from an earring modelled as a winged cherub or Eros, wearing a beaded sash, with pendant loop fitting to the head, *length 21.5mm*.

£80-£100

For illustration of similar pendant drops see: Mascetti, D. and Triossi, A., *Earrings, from Antiquity to Present*, Thames and Hudson, 1990, p24-25.





A PAIR OF ANTIQUE GOLD CHERUB EARRINGS, probably Hellenistic period, the wire hoops suspending realistically modelled winged cherub drops, representing Eros the god of love, *cherub length 16mm*. £300-£500

Eros, the god of love was a popular motif for earrings throughout the Hellenistic period, from the late 4th to the late 2nd century BC, across the Hellenised world. Daniella Mascetti notes that as the the period progressed emphasis on the human figure became so pronounced that earlier designs of earrings evolved into the form of an Eros figure suspended from the earlobe by means of a hook of gold wire, which we see here.

See: Mascetti D. and Triossi, A., *Earrings, from antiquity to present*, Thames and Hudson, London, 1990.



A PRIVATE COLLECTION OF FIFTEEN ASSORTED ROMAN, BYZANTINE, MEDIEVAL AND LATER RINGS, comprising three Western European Roman key rings, 2nd-3rd century; a 17th-18th century Islamic archer's ring; a 15th-16th century letter 'I' signet ring; three further 16th-18th century rings; and seven other rings. £180-£200



A SMALL GROUP LOT OF ANTIQUITIES, comprising a 6th century girdle hanger, an annular brooch, a 7th century equal armed brooch, a Saxon cocked hat sword pommel, three 9th century bronze and niello strap ends, a 6th century nail cleaner, a 6th-7th century bronze pin with ring and dot pattern, some strap fittings and some Celtic bronze toggles. £80-£100



301 A LATE ROMAN/BYZANTINE BRONZE OIL LAMP, 4TH-6TH CENTURY A.D., with pear shaped body, a flat base and a high handle adorned with a heart shaped frame terminating at each corner in a spiral decoration, the central filling hole with hinges for a lid (now missing), projecting pointed oval nozzle, *length 13.4cm, width 5cm, height 7.5cm.* £150-£200

302 A BYZANTINE BRONZE LADLE, 5TH-7TH CENTURY A.D., intact with a circular bowl, long straight handle curved at the end with a horned antelope's head terminal, *length 28.5cm.* £200-£240





A 6TH CENTURY BRONZE CRUCIFORM BROOCH, slight damage, length as is 14cm.

£75-£85



A LATE ROMAN/BYZANTINE GROUP OF BRONZE OBJECTS, 4TH-6TH CENTURY A.D., including a bowl with suspension handle, an oil lamp (handle missing), a tripod base with claw feet and set with a central spike, a hanging bowl and a circular base. (5)

£75-£100

Objects of Vertu



Louis Osman

'He was an architect, goldsmith, draftsman, art historian and art patron. Most of all he was a creator of genius' - these are the words Graham Hughes, Art Director of the Goldsmiths' Company, used to describe Louis Osman.



Even as a youth Louis Osman (1914-1996) showed a flair for creativity, channelling his talent into his training at the Bartlett School of Architecture in the 1930s and also studying drawing at the Slade School of Art. Louis began his career as an architect in the office of Sir Albert Richardson and from the beginning was keen to question traditional methods and push design and construction to their limits. He first made his name when he rebuilt the bomb damaged Convent of the Holy Child Jesus on Cavendish Square, London, and much of his other architectural work comprised restorations or extensions to historical buildings, most notably Staunton Harold, Ranston House in Dorset and Shere Church in Surrey. Another architectural tour-de-force was the neo-renaissance plate glass palazzo Principal's Lodge he designed for Newnham College, Cambridge.

In the early 1960s *"Osman moved out of masonry and into precious metals with grace and apparent ease."* Under the direction of Graham Hughes, the Goldsmiths' Company commissioned Louis first to design a new treasury for Lincoln Cathedral, and then in 1969 to make the crown which the Company presented to the Queen for the Prince of Wales' investiture at Carnarvon Castle - *"the best known piece of new British gold of [the] century"*. As well as his silver and gold work Louis also designed and produced jewellery, mostly for commission, but sometimes for exhibition. The Goldsmiths' Company later went on to host the 'Louis Osman Gold Exhibition' at Goldsmiths' Hall, also commissioning several further important works from him, including the wonderful 'Water lily mazer bowl' centrepiece, which **Dix Noonan Webb** are delighted to offer here for sale.

Louis *"always undertook meticulous research to ensure his commissions were appropriate for the individual or institutions commissioning them, with the design drawings in pencil, ink and watercolour, often embellished with gold leaf, being works of art in their own right"*, and this is clearly demonstrated by the beautiful designs and drawings he produced, and the annotations he added to them, which comprise the second part of his personal archive offered here.

See: Moore, J., *Louis Osman (1914-1996): the life and work of an architect and goldsmith*, Halsgrove, 2006.

Objects of Vertu

LOUIS OSMAN

305



Louis Osman Archive: A selection of sketches, plans and corresponding relating to Victoria and Albert Museum lectern, the Magna Carta casket and Bury St Edmunds charger bowl. £100-£150

In 1972 the Goldsmiths' Company recommended Louis to the British Government, for the commission of a golden box/showcase to display one of the four copies of the Magna Carta, which was to be loaned by Britain to the USA, as a contribution to America's bicentennial celebrations. As usual Louis' design was meticulously researched and full of symbolism. The casket still takes pride of place within the crypt of the United States Capitol building today.

In 1975, the late alderman Robert Olle bequeathed a legacy to the civic council of St Edmundsbury for the purchase of civic gold and silverwork. The council decided to commission a charger from Louis, specifying that the piece portray "the conception of the meeting of the barons at the high altar in the present Abbey gardens to enforce the granting of the Magna Carta". The 25 inch silver charger is centred with an enamelled depiction of the coat of arms of St Edmundsbury, newly granted when the borough was formed in 1976. Surrounding this are enamelled shields of all 27 barons, who persuaded King John to sign the Magna Carta. The charger remains a centrepiece of the borough's treasury.

In 1985 Sir Roy Strong, Director of the Victoria and Albert Museum, having been impressed by Louis' work, on the Magna Carta casket, decided to commission from him a lectern for the museum. The free standing lectern is beautifully engraved with symbolic designs reflecting creation and the creative process, full of allegorical characters representing the Earth and fertility, the seasons and the battle between light and dark. At the front is suspended an enamelled pendant depicting a phoenix rising from the flames. Louis himself described this as "the largest piece of Fine Art engraving since Hogarth".

www.dnw.co.uk

All lots are illustrated on our website and are subject to buyers' premium at 20% (+VAT where applicable)

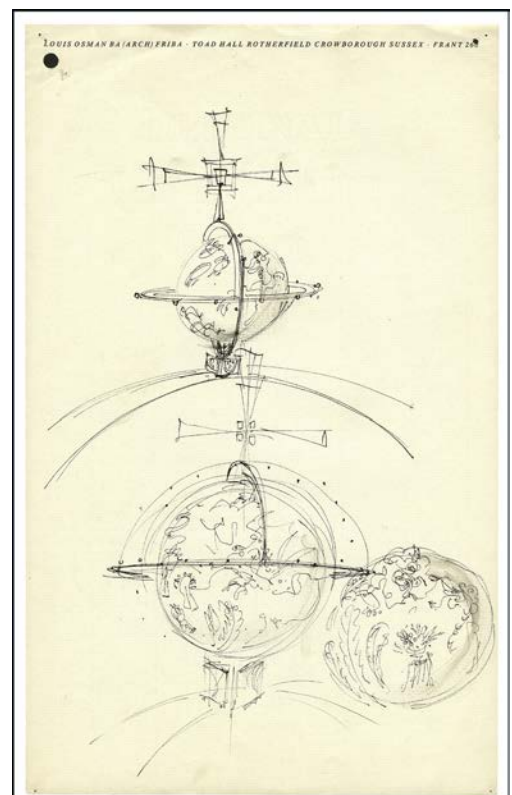


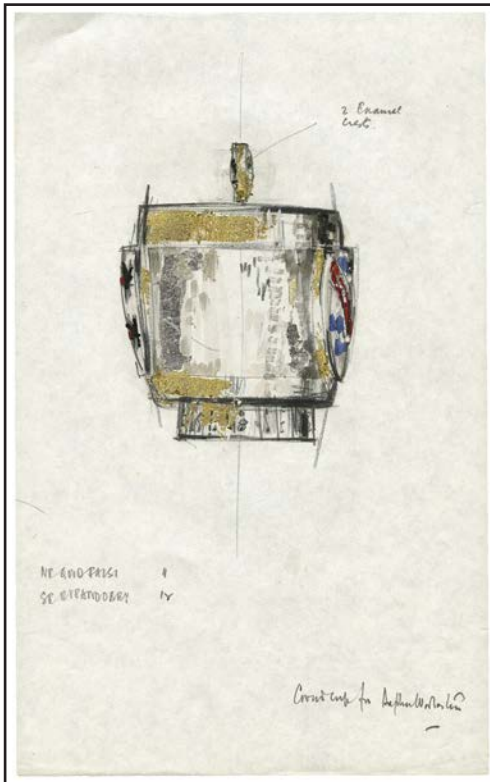
306 Louis Osman Archive: A selection of sketches and correspondence relating to medals, including the Verulanium medal, and medals of York and Lincoln Cathedral. £80-£100



307 Louis Osman Archive: A selection of sketches relating to the Prince of Wales crown, mostly in ink and watercolour on A4. £80-£100

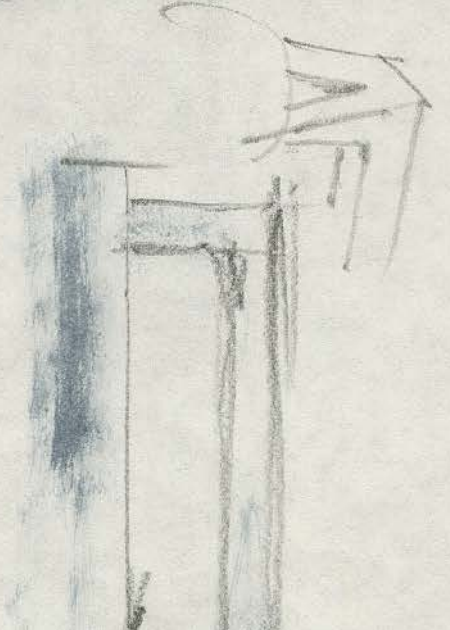
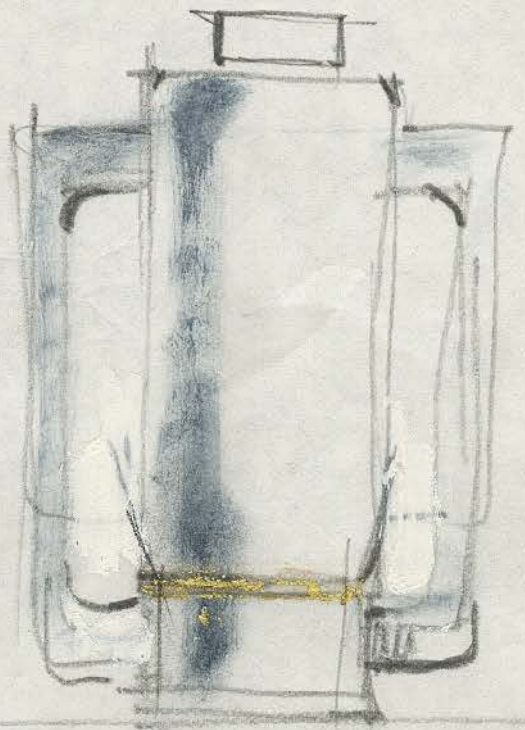
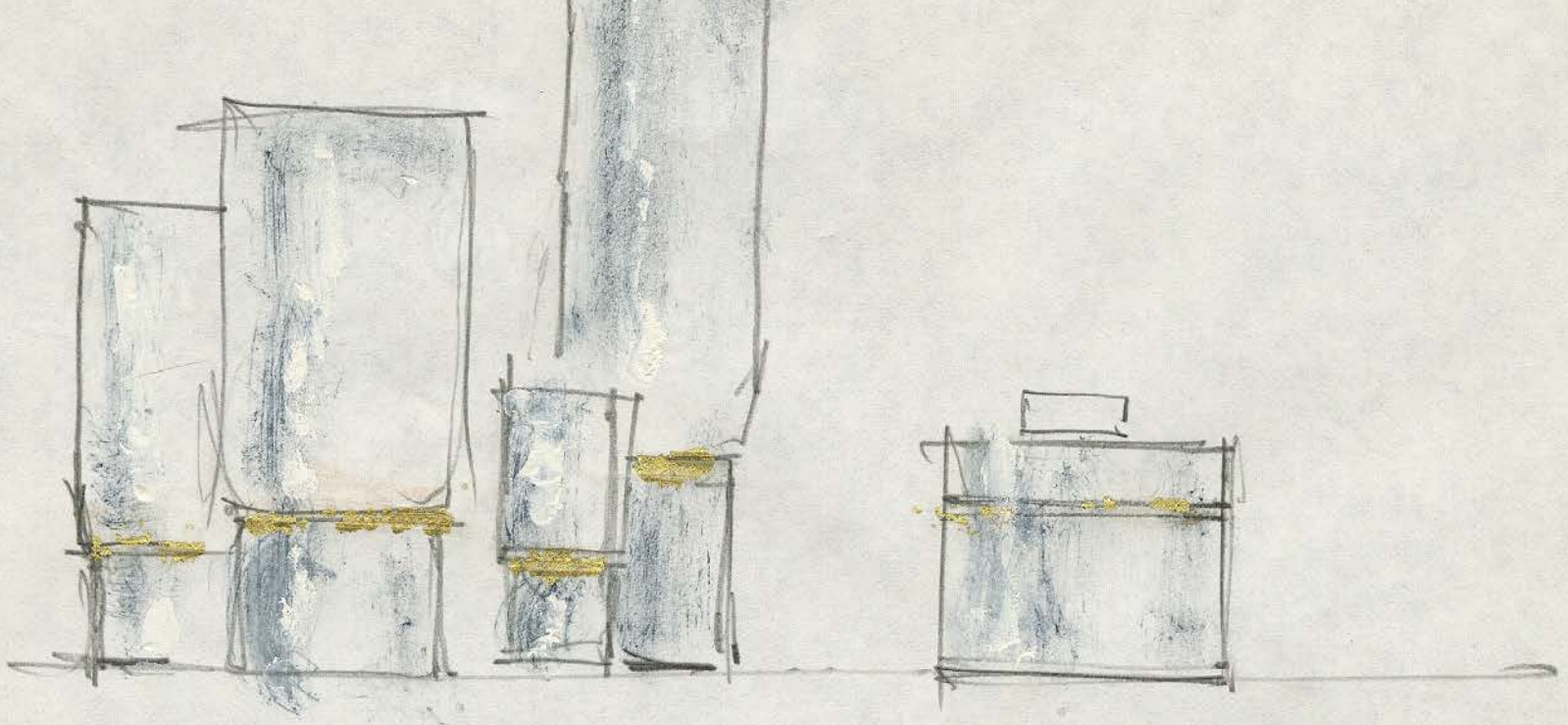
Prince Charles was invested as the Prince of Wales on 1st July 1969. When preparations for the ceremony began, the regalia was inspected and it was decided a new crown would be appropriate; the Goldsmiths' Company offered to present HM the Queen with the gift of a new crown and Louis Osman was privileged to be asked to design and make it. The result is, in the words of Graham Hughes, a past director of Goldsmiths' Company "*deservedly the best known piece of new British gold of this century*".

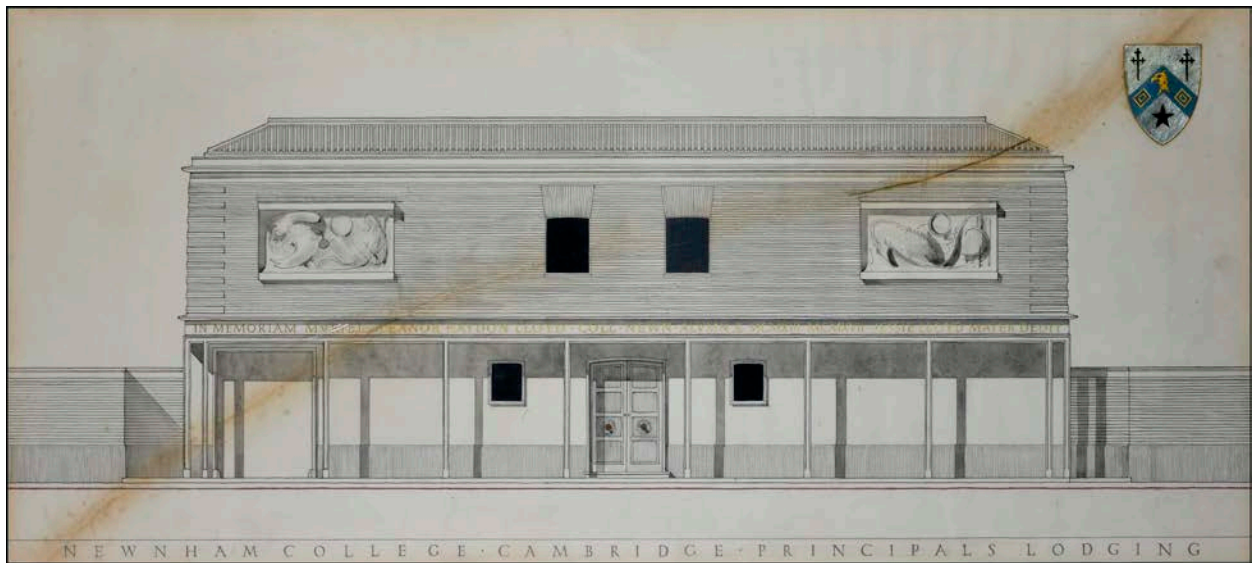




308 Louis Osman Archive: A selection of sketches, designs and correspondence relating to silver work undertaken for exhibition and commission. £100-£150



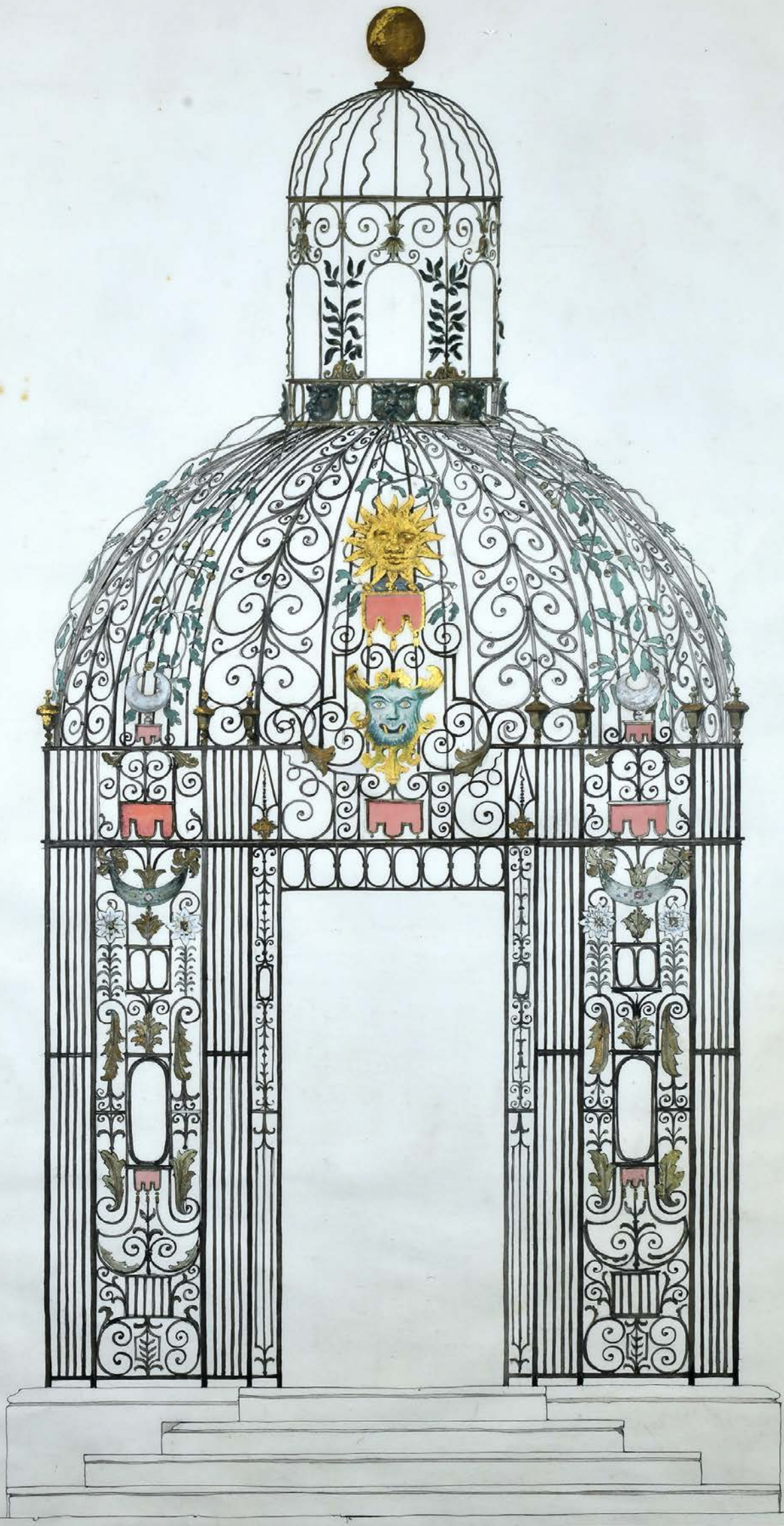




Louis Osman archive: the mounted design for the front elevation of Lloyd Lodge, the Principals Lodgings, Newnham College, Cambridge, in ink and gilt, (glass cracked), and another mounted design for the Bakewell 'Bird Cage' arbour, 1958, in ink, watercolour and gilt, *first dimensions 49 x 112.5cm, second 109 x 64cm.* £100-£150

In 1958 Newnham College, Cambridge were given a substantial bequest by Jessie Lloyd, in memory of her daughter Muriel, and decided to commission a new independent house, as lodgings for its principal, and chose Louis Osman to design it. The lodge is based on a classical design, comprising a square central courtyard walled with sheet glass. The front elevation depicted in this design faces out onto Newnham Walk, and has a pillared portico stretching the length of the house, with lettering above commemorating Muriel Lloyd.

In 1708 Robert Blackwell, a Derbyshire blacksmith, had created an elaborate 'Bird Cage' arbour in the grounds of Melbourne Hall in Derbyshire. In 1958 Louis worked with the ironwork specialists George Lister & Sons Ltd, on the restoration of this arbour. He meticulously researched Bakewell's original plans so that the ironwork could be stripped and repainted in its original striking colour scheme.



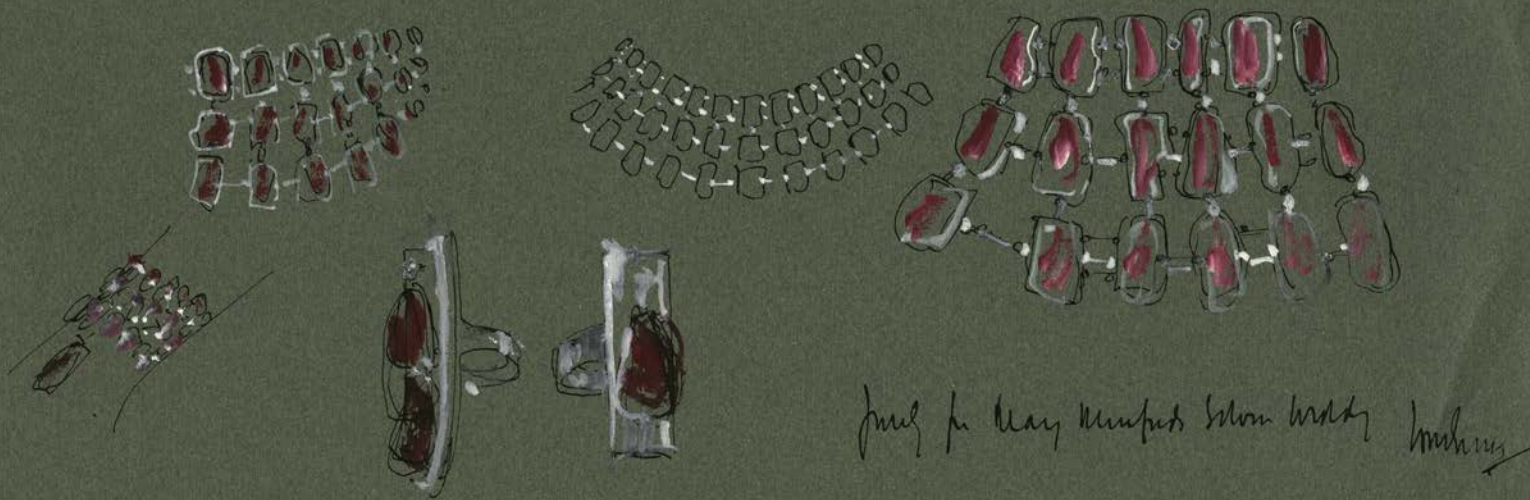


A design for the Chapel at Kings College

Louis Osman Archive: A selection of sketches, designs and correspondence relating to architectural work, including Staunton Harold, etc. £80-£100



Louis overseeing construction of the wooden spiral staircase he designed for Lady Hollenden, 2005



311 Louis Osman Archive: A selection of sketches, designs and correspondence relating to jewellery designed for exhibition and commission. £100-£150





312 AN IMPORTANT WATERLILY MAZER BOWL, IN SILVER GILT, TITANIUM, LABURNUM WOOD AND ENAMEL, BY LOUIS OSMAN, FOR PETER JENKINS, 1991, ACCOMPANIED BY THE ORIGINAL DESIGN DRAWING, the polished laburnum wood bowl with an oval titanium and silver gilt oversized rim in the form of a pool of water, the bowl containing a removable silver gilt and enamel centrepiece of flowering waterlilies, the base hallmarked and bearing maker's mark, accompanied by the original pastel, gilt and ink designs, on buff paper, framed, bowl length 25cm, design dimensions 113 x 33cm. £10,000-£15,000

In 1988 Peter Jenkins retired as clerk of the Goldsmiths' Company after 13 years. The company wished to give Peter a retirement gift, he suggested a piece by Louis Osman, who he had known many years and whose work he admired. It was decided the piece should be a mazer bowl (a medieval drinking vessel) and Louis set to work researching the history of mazer bowls and determined that the design should be "*in the medieval tradition but completely contemporary in feeling*" and based on a rare waterlily, found in the Bodnant Gardens in North Wales. The lip of the bowl is silver gilt on a titanium core, with a slight ripple effect, to suggest moving water, work which tested silversmith Peter Musgrove to his utmost. For the bowl itself Louis selected Laburnum wood, "cream[ier] in colour and a marvellous contrast with the silver gilt. In the centre of the bowl sits a realistically modelled waterlily 'cover', worked by Michael Knight and masterfully enamelled by Louis' wife Dilys. This 'cover' can be removed from the bowl and used as a free standing smaller centrepiece. The accompanying design shows that Louis had intended for the bowl to bear a presentation inscription - work that was never undertaken on the final piece.





-
- 313** A SILVER BEAKER, BY LOUIS OSMAN, the spot hammered barrel-shaped beaker with two square projecting handles, one inscribed 'GDS', the other '1968', hallmarked for London, 1970 and bearing maker's mark, height 61mm, weight 294gm/10.4oz. £1,000-£1,500

This beaker was commissioned from Louis Osman as a christening gift for the vendor.





ROYAL INTEREST: TWO SIGNED FRAMED ROYAL PHOTOGRAPHS, the first of HRH Prince Philip, the Duke of Edinburgh, signed and dated 1977, and the other of HRH Queen Elizabeth The Queen Mother, by Cecil Beaton, signed and dated 1958, both in gilt monogrammed blue leather easel back frames, *first total length 63cm, second total length 30.5cm.* £150-£300



ROYAL INTEREST: TWO SIGNED FRAMED ROYAL PHOTOGRAPHS, of HRH Queen Elizabeth II and HRH Prince Philip, the Duke of Edinburgh, both signed and dated 1954, in cream frames with scrolled corners, *lengths 30.5cm.* £150-£300



Thomas Percy (13 April 1729 – 30 September 1811), was **Bishop of Dromore, Co Down**. Born in Bridgnorth, the son of a grocer, he was awarded a Careswell exhibition to Christchurch, Oxford. In 1753 he was appointed to the vicarage of Easton Maudit, Northampton, three years later moving to Wilby. In 1769 he was appointed as Chaplain to King George III and in 1782 became Bishop of Dromore, County Down. A linguist and antiquarian, Percy's greatest contribution to literature was as author of *Reliques of Ancient English Poetry* (1765), the first of the great ballad collections. This work is considered to be responsible for the revival of the ballad tradition in English poetry that was a significant part of the Romantic movement, and set the stage not only for Robert Burns, but also for Wordsworth and for Coleridge's Lyrical Ballads.

A member of the **Literary Club**, founded in 1764 by Sir Joshua Reynolds and Samuel Johnson, Percy made the acquaintance of leading literary and political gentlemen of the day, including **Samuel Johnson, Oliver Goldsmith**, and Edmund Burke.

Edward Whalley (c. 1607 – c. 1675) was an English military leader during the English Civil War, and was one of the regicides who signed the death warrant of King Charles I of England.

He was the son of Richard Whalley High Sherriff of Nottingham and his second wife, Frances Cromwell, aunt of Oliver Cromwell.

At the outbreak of the Civil war in 1642, he took up arms for Parliament. He distinguished himself in battle, commanding one of Cromwell's two regiments of cavalry at the Battle of Naseby. When the king was seized by the army, he was entrusted to the keeping of Whalley and his regiment, at Hampton Court Palace. Whalley refused to remove Charles's chaplains, and treated his captive with courtesy, so much so that Charles later wrote him a letter of thanks. In the Second English Civil War, Whalley again distinguished himself as a soldier. He was chosen to be a Commissioner (judge) at the trial of Charles I and was the fourth to sign the king's death-warrant, immediately after Cromwell. The King was executed in London on 30 January 1649. At the Restoration, Whalley, with his son-in-law, Major-General William Goffe, escaped to North America, and landed at Boston on 27 July 1660 where they were well received. But opinion turned against them and in 1661 they fled to Connecticut, finally settling in Massachusetts. Attempts by the English government to arrest them failed, and Whalley remained there till his death around 1674/5.

316 TWO SMALL ENAMEL BOXES, both of rectangular form with hinged lids, decorated with white enamel, painted floral detail and printed and painted scenes of figures in landscapes, one box containing a small paper note reading 'This box was given to my mother when a little child, by D. Johnson, 1784, Theo Whalley', box dimensions 40 x 33 x 26mm. **£100-£150**



The other box previously contained a similar paper (now lost) noting that this was given by Oliver Goldsmith.



317 A SMALL GROUP OF THREE SMALL ENAMEL BOXES, all decorated with blue enamel with polychrome enamel hinged lids, one decorated with a scene of two doves amid flowers, another depicting a shipwrecked man within the motto 'A present from Salisbury', the third reading 'Have communion with few, be familiar with one, deal justly with all, speak evil of none', together with later porcelain example. **£100-£150**

318 A GEORGIAN SILVER VINAIGRETTE, of rectangular form with hinged lid and chased foliate and floral borders, lid inscribed 'Theodosia', hallmarked for Birmingham, 1818 and bearing maker's mark 'IT', dimensions 29 x 21 x 8.5mm. **£60-£80**

Mrs Theodosia Barbara Whalley (née Meade) was the only daughter of the Hon. and Ven. Pierce Meade, Archdeacon of Dromore and the last remaining grandchild of **Thomas Percy, Bishop of Dromore**.





A SMALL GROUP OF 18TH AND 19TH CENTURY LETTERS, INVITATIONS AND VISITING CARDS, including invitations for various balls and ‘smart parties’ addressed to Theodosia Whalley and others, in an embroidered silk wallet, together with a sheet of hand written verse by Bishop Thomas Percy, with watercolour and appliqué floral motif verso, a lock of Bishop Percy’s hair and a sheet of hieroglyph/code text, etc. £40-£60

This sheet of Thomas Percy’s verse, signed and dated 1784 reads:

*“See how fair spring resumes her gentle reign,
 Descending beautiful in a vernal shower,
 Delightful moisture fill the fertile plain
 An every branch of Nature feels her power.*

*Quick let me wander at approach of dawn,
 And hear the feather’d race their love declare,
 Or with extatick (sic) pleasure seek the lawn,
 And listen to the lark aloft in air.*

*Such scenes as these delight my youthful muse,
 Pleas’d with the voices of the tuneful throng,
 Again your unaffected worth I chuse (sic)
 To be the subject of my artless song*

*What through nor Sappho’s ease, nor Pindants fire,
 for grace my verse, or echo in my lay,
 Deign to except this effort of my lyre,
 That annual tribute which to you I pay.”*

- 320** A LATE 17TH CENTURY TORTOISESHELL TOBACCO BOX, the oval box with pricked initials 'CM' and date '1699' to the lid, with squeeze action opening, with white metal hinge to the exterior, *length 9.1cm.* £80-£120



- 321** A WHITE METAL BASKET MODELLED AS A FISHING CREEL, of wirework construction, the hinged lid with gilt decorated carrying handle, and with similarly decorated catch fastener, raised on four gilt swivel paw feet, *length 12cm x height 7cm (excluding handle).* £80-£120



- 322** A 19TH CENTURY RECTANGULAR POLISHED HORN SNUFF BOX, metal mounted, with hinged lid, the interior tortoiseshell lined, *length 9.5cm.* £40-£60





A VICTORIAN SILVER CIRCULAR SALVER BY **ROBERT HENELL**, with engraved scroll decoration, and raised scrollwork border, engraved central presentation inscription, on three pierced entwined knot feet and central, hallmarked for London, 1869, diameter 30cm. £200-£300

326

A CHINESE HEART-SHAPED BOX, probably by **Wo Shing** (of Canton & Shanghai) with pull off cover, embossed with birds and foliate, including bamboo and prunus blossoms, small monogrammed panel to the lid, Chinese marks to the base, dimensions 63 x 62mm. £60-£80



327



A CASED SILVER MOUNTED CUT-GLASS CONDIMENT SET, comprising a hinged lidded mustard, with spoon, two salts with spoons and two pepperettes, all in hob-nail cut-glass with silver mounts, hallmarked for Birmingham, 1908, and bearing maker's mark 'L&S', in a fitted case, signed 'J. Hammon'. £40-£60



A VICTORIAN AESTHETIC MOVEMENT SILVER CARD CASE/PURSE, of rectangular form, with engraved decoration including cranes, fish, owls, prunus blossoms, etc., initialled and by Sampson Mordan & Co, London 1883, together with an Aesthetic movement silver oval hinged locket pendant, card case dimensions 107 x 73mm, locket length including bale 6cm.

£150-£200



AN ANTIQUE SILVER BOX, 18TH/19TH CENTURY, probably German, the rectangular box with wavy outline, engraved with columns against a balustrade and scrolling foliage, the front centred with a bird, with silver gilt interior, bearing punched oval stamp of a rearing horse and initial H, possibly the town mark for Gmünd, dimensions length 70mm x width 50mm x depth 3mm.

£200-£300



A RUSSIAN LATE 19TH CENTURY SILVER AND NIELLO TOBACCO BOX, the hinged cover depicting a scene of the Kremlin, with Moskva River in the foreground, within a cartouche border and woven mesh style surround, with push button catch, the interior bearing marks for Ivan Saltikov, Moscow, 1890, and stamped for 84 fineness, dimensions 11.3 x 6.8cm.

£200-£300



x331



A **GEORGIAN IVORY BOX**, the small oblong box with hinged lid, the ivory with reeded decoration and inset with gold plaque and gold hinge, containing a small ivory handled toothpick, the white metal blade signed 'LUND', box length 79mm. £100-£120

Please note ivory is covered by CITES legislation and may be subject to import/export and trade restrictions.

332

A **CONTINENTAL SCENT BOTTLE**, the blue overlaid glass perfume bottle with white precious metal scroll embossed hinged lid, with glass stopper (possibly replaced), length 97mm. £50-£70



333



AN **ENAMELLED POWDER COMPACT**, the circular hinged silver compact engine-turned and enamelled to the front with an image of irises against a white guilloché ground, hallmarked for Birmingham, 1948, bearing maker's mark 'HCD', diameter 104mm. £60-£80

x334

A **LATE 18TH CENTURY BILSTON BATTERSEA ENAMEL BONBONNIÈRE BOX SHAPED AS A PEAR**, with hinged mirrored lid, the base with hunting horn maker's mark, length 5.5cm. £240-£260



x335



AN EARLY 20TH CENTURY ENAMELLED BOX, decorated throughout with colourful cloisonné enamel, the hinged lid and base decorated with a multi petalled flowerhead motif in red, blue and white enamels against a green background, between white and green enamelled borders, and repeating guilloché edging, the reverse similarly decorated, stamped marks possibly for Latvia, with circular punch of female head facing left, and stamped '875' for silver fineness, with unassociated maroon leather case, dimensions length 88mm x width 57mm x depth 9mm.

£500-£600

336

A 9CT GOLD AND SAPPHIRE BOX, BY CARTIER, 1940, the hinged lidded rectangular box with channel set calibr -cut sapphire thumbpiece, push button release, hallmarked for London, 1940, signed 'Cartier, London' and bearing maker's mark 'JC', in original fitted gilt tooled signed red leather case, dimensions 82 x 62x 17.5mm.

£2,400-£2,800





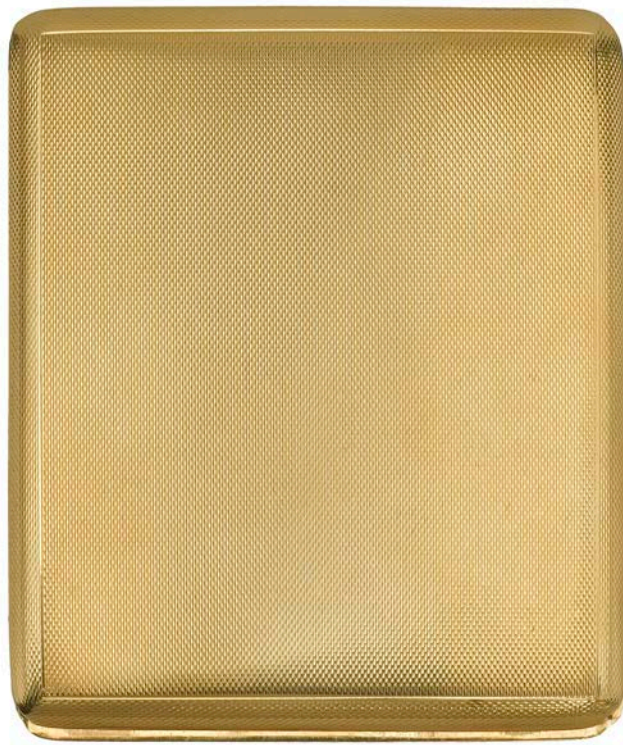
A SMALL GROUP COMPRISING TWO SILVER PURSES AND TWO SILVER POWDER COMPACTS, the first a slim narrow purse with engraved foliate decoration, and central vacant cartouche by William Hair Haseler, Birmingham 1913, the second smaller purse by F H Adams Ltd, Birmingham 1914, together with a white metal foliate engraved compact stamped 'ITALY 800' and a circular compact, *first purse length 13.4cm.*

£100-£120



A MIXED LOT OF SMALL SILVER AND WHITE METAL ITEMS, including sugar tongs, three card cases, a gold mounted amber cheroot holder in silver case, two napkin rings, two small boxes, a rattle, three thimbles, etc.

£140-£180



AN 18CT GOLD CIGARETTE CASE, the rectangular engine-turned case with slide action opening, interior inscribed, hallmarked for Birmingham, 1955, and bearing maker's mark 'B&S', *dimensions 84 x 100mm.* £4,000-£6,000

340



A 9CT GOLD SCROLL ENGRAVED VESTA CASE, with hinged lid and strike to the base, monogrammed 'MJW' to the front, to plain suspensory loop, hallmarked for Chester, 1909, and bearing maker's mark 'RC', *dimensions 45 x 47mm.* £500-£600

341

A QUEEN ANNE TORTOISESHELL AND SILVER MOUNTED TOBACCO BOX, the oval hinged lid with radiating fluted decoration, centred with a silver plaque inscribed '1705', the box with squeeze action opening, with silver scroll decorated external hinge and with further silver plaque to the base inscribed 'Weaver, Norwch' (sic), *length 9.5cm.* £200-£300





A COLLECTION OF NINE ASSORTED LATE 19TH AND EARLY 20TH CENTURY SILVER VESTA CASES, mostly rectangular in form with assorted engraved decoration, all hallmarked. £100-£160



A SMALL GROUP OF SILVER ITEMS, comprising a three section silver cigar case, hallmarked for Chester, 1897 and bearing maker's mark for 'Hilliard & Thomason,', a silver double sovereign case, by Henry Williamson Ltd, hallmarked for London, 1909, a silver twin division envelope stamp case, hallmarked, and another smaller envelope stamp case, unmarked, cigar case length 11.6cm. £120-£160



A COLLECTION OF SEVEN ASSORTED SILVER RECTANGULAR CIGARETTE CASES, early 20th century, various dates and makers. £140-£180

Watches

345



AN 18CT GOLD KEY WOUND FOB WATCH, BY DANIEL DESBOIS, the gilt dial centrally engraved with flowers and foliate, painted black Roman numerals, blued steel hands, the three-quarter plate signed 'Dan.l Desbois, No 651', the cuvette and inner rear case hallmarked for London 1860, on later 9ct gold belcher-link chain, with two gilt watch keys, *watch diameter 3.9cm, chain length 45cm.* **£600-£800**

346



AN 18CT GOLD CASED OPEN FACED FOB WATCH, BY S. SMITH & SON, LONDON, the gilt dial with black Roman numerals, full plate lever movement signed and numbered '18872', engine-turned case with scrolled borders, hallmarked for London, 1879, *diameter 40mm.* **£300-£500**

347



AN OPEN FACE FOB WATCH, the gilt dial with foliate and floral detail to the centre and black Roman numerals, the cylinder escape movement signed 'Stauffer', the engine-turned case with blue enamel garter detail and outer engraved floral wreath motif, stamped '18k', *watch diameter 38.5mm.* **£100-£120**



AN AMERICAN HUNTER CASED POCKET WATCH, the white enamel dial with black Roman and red Arabic numerals and subsidiary seconds dial, signed 'Waltham, USA.', the jewelled movement signed 'P. J. Bartlett, Waltham, Mass' and numbered '22258127', the engine-turned and scroll engraved hunter case stamped '14k', diameter 47.5mm. £300-£400



A 9CT GOLD OPEN FACED POCKET WATCH, BY **JAMES WALKER, LONDON**, the signed white enamel dial with black Roman numerals and subsidiary seconds dial (hand lacking), signed jewelled movement, plain case hallmarked for London, 1923, diameter 49.5mm. £260-£300



A FLORAL ENGRAVED HUNTER CASED POCKET WATCH, the white enamel dial with black Roman numerals and subsidiary seconds dial, unsigned movement, case with floral and scroll engraving all over, stamped 'K18', diameter 52mm. £400-£600

351



AN 18CT GOLD AND DIAMOND LADY'S WRISTWATCH BY JAEGER LECOULTRE, CIRCA 1970s, the signed gilt dial with gilt hands, between shoulders of diagonally set diamonds against a textured ground, the winder set with cabochon tiger's eye, case stamped to reverse '6179 21', movement and case signed, with European convention mark, on later unassociated Hirsch leather strap, watch head dimensions 26 x 15mm. £600-£800

352



A LADY'S 18CT GOLD WRISTWATCH, BY GIRARD PERREGAUX, EARLY 20TH CENTURY, the signed silvered rectangular dial with gilt spot hour markers, signed jewelled movement, the case signed and stamped '18k, 750' with Swiss marks, and numbered '507832', to angular polished single lugs, and later expanding link bracelet strap, stamped '9ct gold', dial measures 12.5 x 10mm. £100-£150

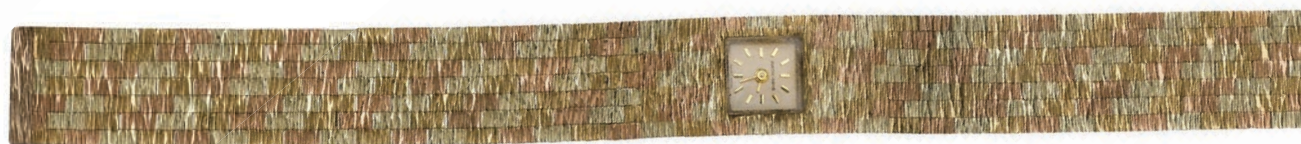
353



A LADY'S GOLD COCKTAIL WATCH, the circular silvered dial with baton hour markers signed 'Sandoz', signed jewelled movement, case stamped '18k, 750' with Swiss marks, to a later bracelet of floral and foliate embossed links, clasp bearing Chinese marks. £150-£200



- 354** A LADY'S GOLD CASED WRISTWATCH, the cushion-shaped gilt dial signed 'Longines', with applied baton hour makers, unsigned quartz movement, lacking crown, the case signed 'Longines' and stamped '750' with Swiss marks, to a fancy double ropetwist baton-link chain bracelet, clasp stamped '750', wristwatch length 19.5cm. £400-£600



- 355** A 9CT THREE COLOUR GOLD LADY'S WRISTWATCH, BY BUECHE-GIROD, CIRCA 1970s, of bark textured brick-link design, the square signed white dial, with gilt baton numerals, stamped with maker's mark 'RCK' for Roy Cecil King, with case, length 17.4cm. £300-£400



- 356** A MID SIZED 18CT GOLD DRESS WRISTWATCH, BY BUECHE GIROD, the signed square silvered dial with applied gilt baton hour markers, signed jewelled movement, case bearing Swiss marks and UK import marks and numbered 'YG 9920-1 72547', with signed crown, to integral textured fancy-link bracelet strap, clasp stamped 'BG' and bearing UK import marks, in a Bueche Girod case, dial width 18mm, wristwatch length 17.5cm. £800-£1,000

357

A LADY'S TANK DIVAN WRISTWATCH, BY CARTIER, the signed rectangular pink mother o' pearl dial with black Roman numerals and secret signature, quartz movement, the sealed stainless steel case signed and numbered '757989CE 2599, with faceted pink sapphire crown, signed pink leather strap, dial dimensions 24 x 13mm. £800-£1,000



358



A LADY'S DIAMOND SET CONSTELLATION WRISTWATCH, BY OMEGA, the signed mother o' pearl dial with applied gilt sport hour markers, signed quartz movement, the steel and gilt case with brilliant-cut diamond set bezel, signed, inscribed 'My choice' and numbered '57161886' to the reverse, to an integral track-link bracelet, dial diameter 16mm. £550-£600

x359



TWO GENTLEMAN'S WRISTWATCHES, BY LONGINES, the first with signed silvered rectangular dial with gilt Arabic numerals and subsidiary seconds dial, signed jewelled movement, signed angular case stamped '14k', to a later red 'crocodile' leather strap; the second with signed silvered textured dial, with gilt batons and Arabic numerals and subsidiary seconds dial, signed jewelled movement, signed angular gold plated case, to later brown 'crocodile' leather strap, dial lengths 21 and 23.5mm. £240-£300



A LADY'S PANTHERE VENDOME WRISTWATCH, BY CARTIER, the signed silvered dial with chapter ring of black Roman numerals with secret signature, quartz movement, the stainless steel and gold case with screwhead details to the bezel, signed and numbered '1057920, 19771', to a stainless steel and gilt brick-link bracelet strap, with signed deployant clasp, accompanied by signed suedette pouch and papers, dial diameter 17mm. £800-£1,200

361



A LADY'S STAINLESS STEEL CALENDAR WRISTWATCH, BY LONGINES, the signed white dial with applied baton hour markers and Roman numerals, with date aperture at numeral 3, centre sweep seconds hand, quartz movement, in stainless steel case, reverse signed and numbered, to a brushed and polished steel track-link bracelet strap, dial diameter 21mm. £80-£120

362

AN 18CT WHITE GOLD DRESS WRISTWATCH, BY VACHERON CONSTANTIN, the polished black rectangular dial signed and with tapered hands, signed manual wind movement numbered '1003/1', the case signed, stamped '18k' and bearing UK import marks, the bezel and integral tapered bracelet strap of textured and polished woven-link design, clasp signed, wristwatch length 18cm. £2,400-£3,000



363



A GENTLEMAN'S STAINLESS STEEL AUTOMATIC CALENDAR V-KING WRISTWATCH, BY JORG HYSEK, the signed black dial with applied luminous spot and silvered Arabic numerals, centre sweep seconds hand and date aperture at numeral 6, automatic movement, the sealed polished and brushed stainless steel case signed and numbered 'VK03-0498', to a black rubber strap with signed steel deployant clasp, dial length 30mm. £100-£150



A GENTLEMAN'S 9CT GOLD OYSTER PRECISION WRISTWATCH, BY ROLEX, the signed cream dial with applied gilt hour markers and subsidiary seconds dial, signed jewelled manual wind movement, the signed case hallmarked and numbered '897246', with presentation inscription to the reverse, to new brown 'crocodile calf' leather strap, *dial diameter 28.5mm.* £700-£800



A GENTLEMAN'S 14CT GOLD ROLEX OYSTER PERPETUAL DATE WRISTWATCH, the signed circular white with black Roman numerals, gilt baton hour markers and tritium luminous dots, gilt hour and minute hands with inlaid luminosity and plain gilt metal sweep centre seconds hand, date aperture at numeral 3, within plain polished bezel and case, and cross hatched detail between the lugs, Swiss automatic chronometer movement, with detachable mesh link bracelet strap with folding ladder clasp, model number 1500, serial number '3922537', case stamped '14k' and with Swiss control marks for 14ct gold, bracelet hallmarked for 14ct gold, London 1975, with maker's mark DS&S, *diameter 34mm, length over all 18cm, gross weight 92.60gm.* £2,800-£3,600

DS&S were makers David Shackman & Sons Ltd, who manufactured gold cases for Rolex from the 1960s. After the Birmingham based company Dennison closed its doors for the final time in 1967, Rolex purchased almost all its UK market gold cases from Shackman. There was some overlap in the dates between the two suppliers.

366

A GENTLEMAN'S OYSTERDATE STAINLESS STEEL WRISTWATCH, BY ROLEX, 1960, the signed black dial with applied baton hour markers and date aperture, signed jewelled manual wind movement, the signed stainless steel case with screw down back, to a brushed steel Oyster bracelet strap with signed deployant clasp, dial diameter 29mm. £600-£800



367

AN 18CT GOLD FLAGSHIP AUTOMATIC WATCH, BY LONGINES, the signed silvered dial with gilt baton hour markers, centre sweep seconds hand, case signed and bearing import marks, to a later 18ct gold brick-link bracelet strap, clasp hallmarked, dial diameter 30.5mm. £1,000-£1,500



368

A GENTLEMAN'S 18CT GOLD AND DIAMOND PHIDIAS AUTOMATIC WRISTWATCH, BY VACHERIN CONSTANTIN, the signed circular cross hatched white dial with gilt hands, diamond set spot numerals, date aperture at numeral 3, within a bezel of fifty six brilliant-cut diamonds, the reverse marked 'Phidias', numbered '1305' and '609458', the case back with 8 screws, to integral flexible link bracelet strap, with deployant clasp, European convention mark for 18ct gold, diameter 32mm. £3,000-£5,000





369 A CASED DESK TIMEPIECE, BY BOUCHERON, EARLY 20TH CENTURY, the central suspended pocket watch with signed silvered dial, black Arabic numerals, jewelled lever escape movement signed 'Octava, +P.33103-DRP.175275, USAP. 816321' and numbered '18073', the case with blue and white enamelled outer border and a cabochon sapphire set crown, the pocket watch suspended from a frosted glass arched mount with applied gold and silver scroll detail and blue glass cameo plaques to the surmount, in fitted shaped gilt tooled pink leather case, signed 'Boucheron', dial diameter 39mm.

£800-£1,200





TWO 9CT GOLD CASED OPEN FACED POCKET WATCHES, both with white enamel dials and plain cases, one hallmarked and with presentation inscription to the cuvette, the other bearing UK import marks, diameters 49mm and 45.5mm. £300-£500



A SMALL GROUP OF FOB WATCHES, comprising an engine-turned hunter cased fob watch, the white enamel dial with black Roman numerals and subsidiary seconds dial, cuvette signed 'Tharbi & Fils, Geneve', case stamped '56', together with two open faced gilt dial fob watches, one with cuvette signed 'George Jones & Sons, Holloway Road, London' and stamped '18k', the other stamped '14k'. £200-300



THREE OPEN FACED FOB WATCHES, the first by Shauffer, Geneve, with gilt dial, scroll engraved case unmarked; the second by Baume, Geneve, with signed gilt dial, engine-turned case stamped '18k'; the third a miniature example, with white enamel dial, textured case with enamelled foliate and swallow detail, stamped '585'. £400-£600



TWO SILVER CASED POCKET WATCHES AND TWO FOB WATCHES, comprising an open faced pocket watch, the silvered dial with gilt Roman numerals and floral detail, movement signed 'Chas Pitt, Duke St, Manchester Squ.', case hallmarked for London, 1925; a hunter cased pocket watch, by Seth Thomas, white dial and movement signed, engine-turned case stamped 'Leader, Coin'; and two scroll and foliate engraved silver cased fob watches, one hallmarked, the other stamped '800'.
£80-£100



SEVEN ASSORTED FOB WATCHES, cases variously marked for 9, 12, 14 and 18ct gold, five are lacking glass, together with an empty pocket watch case stamped '14k', and a loose movement and three loose dials. £500-£700



THREE EARLY 20TH CENTURY WRISTWATCHES, two of fob watch form with wire lugs, the first with white enamel dial and brown leather strap, case stamped '14k', the second with gilt dial, case stamped '9k'; together with another with white enamel dial, case stamped 'k9', to an expanding link bracelet strap, also stamped '9ct'. £300-£500

A LADY'S DIAMOND AND SAPPHIRE SET PENDANT FOB WATCH, the cream rectangular dial signed 'Boucheron' with black Roman numerals, jewelled movement unsigned, the case with hinged dial cover pavé set with single-cut diamonds and baguette-cut sapphires in geometric design (adapted), on an articulated suspension and bar brooch of millegrained geometric form set with single-cut diamonds, *total fob length 39mm*.

£600-£800



A PAIR OF DIAMOND EARSTUDS AND AN EARLY 20TH CENTURY DIAMOND SET COCKTAIL WATCH, the earstuds comprising brilliant-cut diamonds in simple four claw stud mounts; the cocktail watch with silvered dial with black Arabic numerals, jewelled manual wind movement, case stamped 'platinum, London made', with geometric millegrained shoulders set with single-cut diamonds, to a black cordette strap, *earstuds total diamond weight approximately 0.3 carats, watch dial dimensions 14.5 x 7.2mm*.

£200-£300



A LADY'S SMALL FOB WATCH, BY CHARLES LE ROY, PARIS, the signed white enamel dial with black Roman and Arabic numerals, the full plate movement with Dutch style balance cock signed and numbered '191', the engine-turned case with three colour foliate detail and central medallion of a mouse foraging, the bezel set round with seed pearls, *watch diameter 30mm*. £100-£200



A COLLECTION OF TEN ASSORTED FOB WATCHES, including hunter and open faced cased examples with gilt and white enamel dials, six stamped '18k', one stamped '9k', and three silver cased examples together with a silver cased half hunter pocket watch.

£1,000-£1,200



AN 18CT GOLD CASED OPEN FACED POCKET WATCH, BY THOMAS ALEY OF KNIGHTSBRIDGE, the silvered/gilded dial with floral centrepiece, applied Roman numerals and subsidiary seconds dial, signed full plate movement with diamond endstone, engine-turned case hallmarked for London, 1861, diameter 42.5mm. £400-£600



A REPEATER MOVEMENT WITH MOONPHASE DIAL, UNCASED, BY T. MARTIN & CO, LONDON, the white enamel dial with black Roman numerals and four subsidiary dials for month, date, day and seconds and moonphase, the movement with two chimes signed 'T. Martin & Co, 151 Regent Street, London, W.' and numbered '3739' (damaged), diameter 45mm. £100-£200



AN AMERICAN WHITE METAL CASED POCKET WATCH, glazed both sides, with outer chapter ring of Arabic numerals, the central cream dial with subsidiary dial 0-60, the reverse with exposed Swiss movement, together with a two colour fancy-link chain, with two swivel fasteners stamped '18ct', suspending a 9ct gold presentation medallion for Romford Town Swimming club, watch diameter 43mm. £300-£340



A 9CT GOLD OPEN FACED POCKET WATCH, BY ROLEX, the signed white enamel dial with black Roman numerals and subsidiary seconds dial, signed 15-jewel movement, plain case hallmarked for Chester, 1923, diameter 49mm. £300-£400



AN 18CT GOLD HALF HUNTER POCKET WATCH, the white enamel dial with black Roman numerals and subsidiary seconds dial, unsigned jewelled movement, plain case with blue enamel chapter ring, bearing UK import marks for 1897, diameter 49.5mm. £400-£600



A 9CT GOLD OPEN FACED POCKET WATCH, the white enamel dial with black Arabic numerals and subsidiary seconds dial, jewelled lever movement signed 'Advance', plain case hallmarked for Birmingham, 1927, diameter 48.5mm. £300-£500

386

A CERTINA DS-2 CERTRONIC STAINLESS STEEL DAY DATE WRISTWATCH, EARLY 1970s, with ESA 9164 'tuning fork' movement, the signed circular blue dial with applied luminous baton numerals and hands, red sweep seconds hand, day date aperture at 3, in brushed polished stainless steel case with signed crown and turtle back, on signed bracelet, with original red Certina box, watch head diameter 44mm. £60-£80



x387



TWO GENTLEMAN'S STAINLESS STEEL AUTOMATIC WRISTWATCHES, BY OMEGA, the first a Constellation calendar wristwatch, the signed silvered dial with gilt baton hour markers and date aperture, centre sweep seconds hand, signed jewelled automatic movement, in signed stainless steel case, to brown 'crocodile' leather strap; the second a Seamaster wristwatch, the signed gilt dial with gilt and black baton hour makers and centre sweep seconds hand, signed jewelled automatic movement, in signed stainless steel case, to brown 'crocodile' leather strap, dial diameters 31 and 29mm. £240-£300

388

A GENTLEMAN'S 18CT WHITE GOLD WRISTWATCH, BY OMEGA, the signed textured and silvered circular dial with applied baton hour makers, quartz 1365 movement, polished case with push button crown, to integral chevron mesh-link bracelet, with signed clasp, case and bracelet clasp bearing European convention marks '750', with original Omega tag, wristwatch length 19.5mm. £1,200-£1,500



DIAMONDS

Diamonds are assessed according to the four Cs:

Carat weight

1 carat equals 0.2 grams.

Cut

The quality of a cut is assessed in terms of its proportions, symmetry and polish.

Colour

Unless regarded as a 'fancy' coloured diamonds, all diamonds are graded on their lack of colour. The gradings runs as follows:

GIA	CIBJO	Traditional
D	Exceptional White + (EW+)	Finest White
E	Exceptional White (EW)	Finest White
F	Rare White + (RW+)	Fine White
G	Rare White (RW)	Fine White
H	White (W)	White
I	Slightly Tinted White (STW)	Commercial White
J	Slightly Tinted White (STW)	Top Silver Cape
K	Tinted White (TW)	Top Silver Cape
L	Tinted White (TW)	Silver Cape
M-Z	Tinted Colour (TC)	Cape
Fancy	Fancy Colour	

Clarity

Diamonds are graded on their freedom from inclusions (within the stone) and blemishes (found on the surface of the stone). They are assessed using 10x magnification, and are graded as follows:

GIA	CIBJO	Description
Flawless (FL)	Loupe Clean (LC)	Shows no inclusions or blemishes
Internally Flawless (IF)	Loupe Clean (LC)	Shows no inclusions and only insignificant blemishes
Very Very Slightly Included (VVS1/2)	Very Very Slightly Included (VVS1-2)	Contains minute inclusions which are very difficult for an experienced grader to see with 10x magnification
Very Slightly Included (VS1-2)	Very Slightly Included (VS1-2)	Contains very small inclusions that are difficult to see with 10x magnification
Slightly Included (SI1-2)	Slightly Included (SI1-2)	Contains inclusions that are easily visible with 10x magnification
Imperfect/Included (I1-3)	Pique (P1-3)	Contains inclusions that are obvious with 10x magnification and can often be seen with the naked eye; durability may be affected

Please note the four Cs of a diamond cannot be fully assessed whilst the stone is mounted. The approximate gradings provided in the condition reports are estimations, made by the specialists whilst the stones were mounted and are for guidance only. If a stone has been unmounted and assessed in a gemmological laboratory, this will be noted in the cataloguing/condition report.

INDEX of MAKERS

Albion Croft Co Ltd	Lot 234
Aley, Thomas	Lot 380
Baume	Lot 372
Beaton, Cecil	Lot 314
Beuche Girod	Lot 355 and 356
Boodles	Lot 29
Boucheron	Lot 369
Bulgari	Lot 51
Cartier	Lots 57, 224, 225, 357 and 360
Certina	Lot 386
Charles Le Roy	Lot 378
Chaumet	Lot 165
David Morris	Lot 212
De Beers	Lot 78
Debois, Daniel	Lot 345
de Grisogono	Lots 79, 80, 81, 82 and 83
Florence, Kat	Lot 187
Georg Jensen	Lots 107, 109, 111 and 112
Girard Perregaux	Lot 352
Grima, Andrew	Lots 101 and 102
Gucci	Lot 209
Hennell, Robert	Lot 325
Hilliard & Thomason	Lot 343
Jaeger LeCoultre	Lot 351
Jorg Hysek	Lot 363
Koppell, Henning	Lot 111
Kutchinsky	Lots 105, 106, 145 and 286
Lalique	Lot 166
Longines	Lots 359, 361 and 367
Mikimoto	Lot 53
Moboco	Lot 251
Muller, Jean	Lots 193 to 208
Nardi	Lot 170
Omega	Lots 358, 387 and 388
Osman, Louis	Lots 305 to 313
Pioray	Lot 231
Puig Doria	Lot 279
Ramshaw, Wendy	Lot 100
Rolex	Lots 364, 365, 366 and 383
Rygaard, Klaus	Lot 108
Shauffer	Lot 372
Shaw	Lot 150
Smith & So Ltd	Lot 346
T. Martin & Co	Lot 381
Torun, Vivian	Lots 109, 112
Vacheron Constantine	Lots 362 and 368
Walker, James	Lot 349
Weckström, Bjorn	Lot 110





The Collection of Halfcrowns formed by Brian Dawson

Thursday 21st March 2019 at 1pm



London Specialist Auctioneers

Jewellery Medals Coins Banknotes

We are currently accepting entries for our

Jewellery, Watches and Objects of Vertu Sale

to include

Antiquarian and Ancient Jewellery

to be held on

Tuesday 18th June at 2pm

Closing date for entries 3rd May



A medieval annular brooch inscribed 'AVE MARIA GRA' (sic), diameter 15mm, to be included in this sale.

Estimate £2,000-3,000

**All enquiries please contact Frances Noble or Laura Smith
on 020 7016 1700 or email jewellery@dnw.co.uk**

Dix Noonan Webb Ltd
16 Bolton Street Mayfair
London W1J 8BQ

www.dnw.co.uk



Commission Form – Jewellery 26 March 2019

Please bid on my behalf at the above sale for the following Lot(s) up to the price(s) mentioned below. These bids are to be executed as cheaply as is permitted by other bids or any reserve. I understand that in the case of a successful bid, a premium of 20 per cent (plus VAT if resident in, or posted to within, the European Union) will be payable by me on the hammer price of all lots.

Please ensure your bids comply with the steps outlined below:-

- Up to £100 by £5
- £100 to £200 by £10
- £200 to £500 by £20
- £500 to £1,000 by £50
- £1,000 to £2,000 by £100
- £2,000 to £5,000 by £200
- £5,000 to £10,000 by £500
- £10,000 to £20,000 by £1,000
- £20,000 to £50,000 by £2,000
- £50,000 to £100,000 by £5,000
- Over £100,000 by £10,000

Bids of unusual amounts **will be rounded down** to the bid step below and will **not** take precedence over a similar bid unless received first. All absentee bids will be executed in the name of 'Wood'.

NOTE: All bids placed other than via our website should be received by 16:00 on the day prior to the sale. Although we will endeavour to execute any late bids, DNW cannot accept responsibility for bids received after that time. It is strongly advised that you use our online **Advance Bidding Facility**. If you have a valid email address bids may be entered, and amended or cancelled, online at www.dnw.co.uk right up until a lot is offered. You will receive a confirmatory email for all bids and amendments. Bids posted or faxed to our office using this form will now be entered by our staff into the system using exactly this facility to which our clients now have access. **There is, therefore, no better way of ensuring the accuracy of your advance bids than to place them yourself online.**

I confirm that I have read and agree to abide by the Terms and Conditions of Sale printed in the catalogue.

Signed _____

Name (Block Capitals) _____ Client Code _____

Address _____

Tel: _____ E-mail _____

If successful, I wish to pay for my purchases by (please indicate):

- Cash Cheque Credit/Debit Card (see below) Bank Transfer
- Other (please give details) _____

Please note that all payments for purchases by credit card are subject to a 2 percent surcharge on the total invoice price. All payments to be made in pounds sterling.

If successful, I wish to pay for my purchases by (please indicate):

- Master Card Visa Amex Debit card (no surcharge) Issue No

Name (as shown on card) _____

Card no. _____ Start Date / Expiry Date /

Your bids may be placed overleaf

Important Information for Buyers

Absentee Bids

It is recommended that absentee bids are placed using our online advance bidding facility, which is available on our website at www.dnw.co.uk. Bids placed in this way cannot be seen by others and do not go live until the actual moment that the lot in question is being offered for sale. All bids can be easily altered or cancelled by the bidder prior to this point. An automated email will be sent confirming all bids and alterations.

A valid email address is required to bid online.

There is no additional charge for online bidding and it is not necessary to pre-register a payment card in order to do so.

Whilst we are still happy to execute all bids submitted in writing or by phone, fax, etc., it should be noted that bids left with us will be entered at our offices using the same bidding facility to which all our clients have access. There is, therefore, no better way of ensuring the accuracy of your bids than to execute them yourself online.

Whilst online bids can be placed up until the moment a lot is offered for sale, all other bids made to the office must be confirmed in writing, by fax or e-mail and should be received by 14:00 on the day before the auction. Although we will endeavour to execute late bids, Dix Noonan Webb Ltd cannot accept responsibility for any bids received later than this.

Commission Form

Further advice to bidders and purchasers may be found on the commission form included with this catalogue. Please use this form when sending bids to us by post or fax.

Buyers' Premium

A buyers' premium of 20% on the hammer price (plus VAT if resident in, or lots are delivered within, the European Union) **is payable by the buyer on all lots.**

Pre-sale Estimates

The pre-sale estimates are intended as a guide for prospective purchasers. Any bid between the listed figures would, in our opinion, offer a fair chance of success. However all lots, depending on the degree of competition, can realise prices either above or below the listed estimates.

New Clients

New clients must register online to bid (whether in person or in absentia) and any such registrations will only be accepted once due diligence has been completed to the satisfaction of Dix Noonan Webb.

Registration requests, together with auction house references and identification/proof of address as requested should be submitted as early as possible and certainly not later than one business day before the auction.

Whilst every endeavour is made to complete the registration process as quickly as possible, Dix Noonan Webb cannot be held responsible if it is not completed in time for a bid to be placed.

Dix Noonan Webb reserve the right to refuse any registration without explanation.

Methods of Payment

All payments must be made in pounds sterling within five days of the end of a sale unless credit terms have been made by prior arrangement.

The best way to make payment is by Visa or MasterCard credit or debit cards via our website www.dnw.co.uk. Carriage and insurance is pre-calculated for you so that you may pay immediately.

Payment may also be made by bank transfer to DNW's account at:

Lloyds

Piccadilly London Branch

39 Piccadilly

London W1J 0AA

Sort Code: 30-96-64

Account No: 00622865

Swift Code: LOYDGB2L

IBAN: GB70LOYD30966400622865

BIC: LOYDGB21085

Please include your surname, client code and auction date with the instructions to the bank. Alternative methods of payment which may enable immediate clearance of purchases include cash, recognised banker's drafts, credit cards (Master Card, Visa and Amex) and debit cards. Although personal and company cheques are accepted, buyers are advised that property will not be released until such cheques have fully cleared and cannot be subject to recall, which may take two weeks. Third party payment is not accepted except by prior arrangement. Cardholder not present transactions will only be accepted when successfully completed through our online payment platform. Clients may be required to pay by bank transfer for their first purchase or at other times at sole discretion of Dix Noonan Webb.

Please note that we will not accept cash payments in excess of £5,000 (five thousand pounds) in settlement for purchases made at any one auction.

Purchases will be despatched as soon as possible upon full payment in pounds sterling for the lots you have bought. Carriage will be at the buyer's expense. Estimates and advice on all methods of despatch can be provided upon request.

Insurance cover will be arranged unless otherwise specified and will be added to the carriage charge for non-UK deliveries.

Goods can only be shipped to the address provided to and verified by Dix Noonan Webb at the time of registration.

Change of Address

Change of address requests will be subject to the same due diligence by Dix Noonan Webb as at the time of registration.

Conditions of Business

Conditions mainly concerning Buyers

1 The buyer

The highest bidder shall be the buyer at the 'hammer price' and any dispute shall be settled at the auctioneer's absolute discretion. Every bidder shall be deemed to act as principal unless there is in force a written acknowledgement by Dix Noonan Webb Ltd ("DNW") that he acts as agent on behalf of a named principal. Bids will be executed in the order that they are received.

2 Minimum increment

The auctioneer shall have the right to refuse any bid which does not conform to Dix Noonan Webb's published bidding increments which may be found at dnw.co.uk and in the bidding form included with the auction catalogue.

3 The premium

The buyer shall pay to DNW a premium on the 'hammer price' in accordance with the percentages set out above and agrees that DNW, when acting as agent for the seller, may also receive commission from the seller in accordance with Condition 15.

4 Value Added Tax (VAT)

The buyers' premium is subject to the current rate of Value Added Tax if the lot is delivered to the purchaser within the European Union.

Lots marked 'x' are subject to importation duty of 5% on the hammer price unless re-exported outside the EU.

The provision of a VAT form C88 is subject to the discretion of DNW and will be subject to an administration fee of £50.

5 Payment

When a lot is sold the buyer shall:

(a) confirm to DNW his or her name and address and, if so requested, give proof of identity; and

(b) pay to DNW the 'total amount due' in pounds sterling within five working days of the end of the sale (unless credit terms have been agreed with Dix Noonan Webb before the auction). Please note that, as stated above, we will not accept cash payments in excess of £5,000 (five thousand pounds) in settlement for purchases made at any one auction.

6 DNW may, at its absolute discretion, agree credit terms with the buyer before an auction under which the buyer will be entitled to take possession of lots purchased up to an agreed amount in value in advance of payment by a determined future date of the 'total amount due'.

7 Any payments by a buyer to DNW may be applied by DNW towards any sums owing from that buyer to DNW on any account whatever, without regard to any directions of the buyer, his or her agent, whether expressed or implied.

8 Collection of purchases

The ownership of the lot(s) purchased shall not pass to the buyer until he or she has made payment in full to DNW of the 'total amount due' in pounds sterling.

9 (a) The buyer shall at his or her own expense take away the lot(s) purchased not later than 5 working days after the day of the auction but (unless credit terms have been agreed in accordance with Condition 7) not before payment to DNW of the 'total amount due'.

(b) The buyer shall be responsible for any removal, storage and insurance charges on any lot not taken away within 5 working days after the day of the auction.

(c) The packing and handling of purchased lots by DNW staff is undertaken solely as a courtesy to clients and, in the case of fragile articles, will be undertaken only at DNW's discretion. In no event will DNW be liable for damage to glass or frames, regardless of the cause. Bulky lots or sharp implements, etc., may not be suitable for in-house shipping.

10 Buyers' responsibilities for lots purchased

The buyer will be responsible for loss or damage to lots purchased from the time of collection or the expiry of 5 working days after the day of the auction, whichever is the sooner. Neither DNW nor its servants or agents shall thereafter be responsible for any loss or damage of any kind, whether caused by negligence or otherwise, while any lot is in its custody or under its control.

Insurance at the rate of 1.5% will be applied to any lots despatched by DNW to destinations outside the UK, unless specifically instructed otherwise by the consignee.

11 Remedies for non-payment or failure to collect purchase

If any lot is not paid for in full and taken away in accordance with Conditions 6 and 10, or if there is any other breach of either of those Conditions, DNW as agent of the seller shall, at its absolute discretion and without prejudice to any other rights it may have, be entitled to exercise one or more of the following rights and remedies:

(a) to proceed against the buyer for damages for breach of contract.

(b) to rescind the sale of that or any other lots sold to the defaulting buyer at the same or any other auction.

(c) to re-sell the lot or cause it to be re-sold by public auction or private sale and the defaulting buyer shall pay to DNW any resulting deficiency in the 'total amount due' (after deduction of any part payment and addition of re-sale costs) and any surplus shall belong to the seller.

(d) to remove, store and insure the lot at the expense of the defaulting buyer and, in the case of storage, either at DNW's premises or elsewhere.

(e) to charge interest at a rate not exceeding 2 percent per month on the 'total amount due' to the extent it remains unpaid for more than 5 working days after the day of the auction.

(f) to retain that or any other lot sold to the same buyer at the sale or any other auction and release it only after payment of the 'total amount due'.

(g) to reject or ignore any bids made by or on behalf of the defaulting buyer at any future auctions or obtaining a deposit before accepting any bids in future.

(h) to apply any proceeds of sale then due or at any time thereafter becoming due to the defaulting buyer towards settlement of the 'total amount due' and to exercise a lien on any property of the defaulting buyer which is in DNW's possession for any purpose.

12 Liability of Dix Noonan Webb and sellers

(a) Goods auctioned are usually of some age. All goods are sold with all faults and imperfections and errors of description. Illustrations in catalogues are for identification only. Buyers should satisfy themselves prior to the sale as to the condition of each lot and should exercise and rely on their own judgement as to whether the lot accords with its description. Subject to the obligations accepted by DNW under this Condition, none of the seller, DNW, its servants or agents is responsible for errors of descriptions or for the genuineness or authenticity of any lot. No warranty whatever is given by DNW, its servants or agents, or any seller to any buyer in respect of any lot and any express or implied conditions or warranties are hereby excluded.

(b) Any lot which proves to be a 'deliberate forgery' may be returned by the buyer to DNW within 15 days of the date of the auction in the same condition in which it was at the time of the auction, accompanied by a statement of defects, the number of the lot, and the date of the auction at which it was purchased. If DNW is satisfied that the item is a 'deliberate forgery' and that the buyer has and is able to transfer a good and marketable title to the lot free from any third party claims, the sale will be set aside and any amount paid in respect of the lot will be refunded, provided that the buyer shall have no rights under this Condition if:

(i) the description in the catalogue at the date of the sale was in accordance with the then generally accepted opinion of scholars and experts or fairly indicated that there was a conflict of such opinion; or

(ii) the only method of establishing at the date of publication of the catalogue that the lot was a 'deliberate forgery' was by means of scientific processes not generally accepted for use until after publication of the catalogue or a process which was unreasonably expensive or impractical.

(c) A buyer's claim under this Condition shall be limited to any amount paid in respect of the lot and shall not extend to any loss or damage suffered or expense incurred by him or her.

(d) The benefit of the Condition shall not be assignable and shall rest solely and exclusively in the buyer who, for the purpose of this condition, shall be and only be the person to whom the original invoice is made out by DNW in respect of the lot sold.

Conditions mainly concerning Sellers and Consignors

13 Warranty of title and availability

The seller warrants to DNW and to the buyer that he or she is the true owner of the property or is properly authorised to sell the property by the true owner and is able to transfer good and marketable title to the property free from any third party claims. The seller will indemnify DNW, its servants and agents and the buyer against any loss or damage suffered by either in consequence of any breach on the part of the seller.

14 Reserves

The seller shall be entitled to place, prior to the first day of the auction, a reserve at or below the low estimate on any lot provided that the low estimate is more than £100. Such reserve being the minimum 'hammer price' at which that lot may be treated as sold. A reserve once placed by the seller shall not be changed without the consent of DNW. DNW may at their option sell at a 'hammer price' below the reserve but in any such cases the sale proceeds to which the seller is entitled shall be the same as they would have been had the sale been at the reserve. Where a reserve has been placed, only the auctioneer may bid on behalf of the seller.

15 Authority to deduct commission and expenses

The seller authorises DNW to deduct commission at the 'stated rate' and 'expenses' from the 'hammer price' and acknowledges DNW's right to retain the premium payable by the buyer.

16 Rescission of sale

If before DNW remit the 'sale proceeds' to the seller, the buyer makes a claim to rescind the sale that is appropriate and DNW is of the opinion that the claim is justified, DNW is authorised to rescind the sale and refund to the buyer any amount paid to DNW in respect of the lot.

17 Payment of sale proceeds

DNW shall remit the 'sale proceeds' to the seller not later than 35 days after the auction, but if by that date DNW has not received the 'total amount due' from the buyer then DNW will remit the sale proceeds within five working days after the date on which the 'total amount due' is received from the buyer. If credit terms have been agreed between DNW and the buyer, DNW shall remit to the seller the sale proceeds not later than 35 days after the auction unless otherwise agreed by the seller.

18 If the buyer fails to pay to DNW the 'total amount due' within 3 weeks after the auction, DNW will endeavour to notify the seller and take the seller's instructions as to the appropriate course of action and, so far as in DNW's opinion is practicable, will assist the seller to recover the 'total amount due' from the buyer. If circumstances do not permit DNW to take instructions from the seller, the seller authorises DNW at the seller's expense to agree special terms for payment of the 'total amount due', to remove, store and insure the lot sold, to settle claims made by or against the buyer on such terms as DNW shall in its absolute discretion think fit, to take such steps as are necessary to collect monies due by the buyer to the seller and if necessary to rescind the sale and refund money to the buyer if appropriate.

19 If, notwithstanding that, the buyer fails to pay to DNW the 'total amount due' within three weeks after the auction and DNW remits the 'sale proceeds' to the seller, the ownership of the lot shall pass to DNW.

20 Charges for withdrawn lots

Where a seller cancels instructions for sale, DNW reserve the right to charge a fee of 15 per cent of DNW's then latest middle estimate of the auction price of the property withdrawn, together with Value Added Tax thereon if the seller is resident in the European Union, and 'expenses' incurred in relation to the property.

21 Rights to photographs and illustrations

The seller gives DNW full and absolute right to photograph and illustrate any lot placed in its hands for sale and to use such photographs and illustrations and any photographs and illustrations provided by the seller at any time at its absolute discretion (whether or not in connection with the auction).

22 Unsold lots

Where any lot fails to sell, DNW shall notify the seller accordingly. The seller shall make arrangements either to re-offer the lot for sale or to collect the lot.

23 DNW reserve the right to charge commission up to one-half of the 'stated rates' calculated on the 'bought-in price' and in addition 'expenses' in respect of any unsold lots.

General Conditions and Definitions

24 DNW sells as agent for the seller (except where it is stated wholly or partly to own any lot as principal) and as such is not responsible for any default by seller or buyer.

25 Any representation or statement by DNW, in any catalogue as to authorship, attribution, genuineness, origin, date, age, provenance, condition or estimated selling price is a statement of opinion only. Every person interested should exercise and rely on his or her own judgement as to such matters and neither DNW nor its servants or agents are responsible for the correctness of such opinions.

26 Whilst the interests of prospective buyers are best served by attendance at the auction, DNW will, if so instructed, execute bids on their behalf. Neither DNW nor its servants or agents are responsible for any neglect or default in doing so or for failing to do so.

27 DNW shall have the right, at its discretion, to refuse admission to its premises or attendance at its auctions by any person.

28 DNW has absolute discretion without giving any reason to refuse any bid, to divide any lot, to combine any two or more lots, to withdraw any lot from the auction and in case of dispute to put up any lot for auction again.

29 (a) Any indemnity under these Conditions shall extend to all actions, proceedings costs, expenses, claims and demands whatever incurred or suffered by the person entitled to the benefit of the indemnity.

(b) DNW declares itself to be a trustee for its relevant servants and agents of the benefit of every indemnity under these Conditions to the extent that such indemnity is expressed to be for the benefit of its servants and agents.

30 Any notice by DNW to a seller, consignor, prospective bidder or buyer may be given by first class mail or airmail and if so given shall be deemed to have been duly received by the addressee 48 hours after posting.

31 These Conditions shall be governed by and construed in accordance with English law. All transactions to which these Conditions apply and all matters connected therewith shall also be governed by English law. DNW hereby submits to the exclusive jurisdiction of the English courts and all other parties concerned hereby submit to the non-exclusive jurisdiction of the English courts.

32 In these Conditions:

(a) 'catalogue' includes any advertisement, brochure, estimate, price list or other publication;

(b) 'hammer price' means the price at which a lot is knocked down by the auctioneer to the buyer;

(c) 'total amount due' means the 'hammer price' in respect of the lot sold together with any premium, Value Added Tax chargeable and additional charges and expenses due from a defaulting buyer in pounds sterling;

(d) 'deliberate forgery' means an imitation made with the intention of deceiving as to authorship, origin, date, age, period, culture or source which is not shown to be such in the description in the catalogue and which at the date of the sale had a value materially less than it would have had if it had been in accordance with that description;

(e) 'sale proceeds' means the net amount due to the seller being the 'hammer price' of the lot sold less commission at the 'stated rates' and 'expenses' and any other amounts due to DNW by the seller in whatever capacity and howsoever arising;

(f) 'stated rate' means DNW's published rates of commission for the time and any Value Added Tax thereon;

(g) 'expenses' in relation to the sale of any lot means DNW charges and expenses for insurance, illustrations, special advertising, packing and freight of that lot and any Value Added Tax thereon;

(h) 'bought-in price' means 5 per cent more than the highest bid received below the reserve.

33 Vendors' commission of sales

A commission of 15 per cent is payable by the vendor on the hammer price on lots sold.

34 VAT

Commission, illustrations, insurance and advertising are subject to VAT if the seller is resident in the European Union.



www.dnw.co.uk

We were established in 1991 and are located in a six-storey Georgian building in the heart of London's Mayfair, two minutes walk from Green Park underground station.

Our staff of experts collectively have over 300 years of unrivalled experience on all aspects of numismatics and jewellery, including coins of all types, tokens, commemorative medals, paper money, orders, decorations, war medals, militaria, numismatic books, jewellery, watches, objects of vertu, gemology and diamond grading.

We hold numerous auctions each year, the full contents of which are published on the internet around one month before the sale date, together with a unique preview facility which is available as lots are catalogued and photographed. Printed auction catalogues for auctions are mailed to subscribers approximately three weeks prior to each sale.



Auction viewing room



Reception

Our offices, open from 9am to 5:30pm, Monday to Friday, include a pre-auction viewing room, enabling us to offer this facility to clients during the three weeks prior to an auction.

Auctions are held in our building at 16 Bolton Street, Mayfair, where sales may be attended in person. Free online bidding is available using our own live bidding system or by placing commission bids, all of which and much more being available via our website at www.dnw.co.uk.

We look forward to welcoming clients to Bolton Street and assure you of a warm reception.

Location

