



# Jewellery, Watches and Objects of Vertu

Tuesday 10th September 2019 at 1pm



Catalogue J13

## BOARD of DIRECTORS

Pierce Noonan	Managing Director and CEO	020 7016 1700	pierce@dnw.co.uk
Nimrod Dix	Executive Chairman	020 7016 1820	nimrod@dnw.co.uk
Robin Greville	Chief Technology Officer	020 7016 1750	robin@dnw.co.uk
Christopher Webb	Head of Coin Department	020 7016 1801	chris@dnw.co.uk

## AUCTION SERVICES and CLIENT LIAISON

Philippa Healy	Head of Administration (Associate Director)	020 7016 1775	philippa@dnw.co.uk
Emma Oxley	Accounts and Viewing	020 7016 1701	emma@dnw.co.uk
Christopher Mellor-Hill	Head of Client Liaison (Associate Director)	020 7016 1771	christopher@dnw.co.uk
Chris Finch Hatton	Client Liaison	020 7016 1754	finch@dnw.co.uk
David Farrell	Head of Logistics	020 7016 1753	dave@dnw.co.uk
James King	Deputy Head of Logistics	020 7016 1833	james@dnw.co.uk

## JEWELLERY, WATCHES and OBJECTS of VERTU

Frances Noble	Head of Department (Associate Director)	020 7016 1781	frances@dnw.co.uk
Laura Smith	Specialist	020 7016 1782	laura@dnw.co.uk
Nigel Mills	Consultant (Artefacts and Antiquities)	020 7016 1700	nigelmills@dnw.co.uk

## COINS, TOKENS and COMMEMORATIVE MEDALS

Christopher Webb	Head of Department (Director)	020 7016 1801	chris@dnw.co.uk
Peter Preston-Morley	Specialist (Associate Director)	020 7016 1802	ppm@dnw.co.uk
Jim Brown	Specialist	020 7016 1803	jim@dnw.co.uk
Tim Wilkes	Specialist	020 7016 1804	tim@dnw.co.uk
Nigel Mills	Consultant (Artefacts and Antiquities)	020 7016 1700	nigelmills@dnw.co.uk
Peter Mitchell	Consultant (British Hammered Coins)	020 7016 1700	petermitchell@dnw.co.uk
Douglas Saville	Consultant (Numismatic Literature)	020 7016 1700	dougllassaville@dnw.co.uk

## BANKNOTES

Andrew Pattison	Head of Department	020 7016 1831	andrew@dnw.co.uk
Thomasina Smith	Specialist	020 7016 1832	thomasina@dnw.co.uk
Michael O'Grady	Consultant	020 7016 1700	michaelogrady@dnw.co.uk

## MEDALS and MILITARIA

Nimrod Dix	Head of Department (Director)	020 7016 1820	nimrod@dnw.co.uk
Oliver Pepys	Specialist (Associate Director)	020 7016 1811	oliver@dnw.co.uk
Mark Quayle	Specialist (Associate Director)	020 7016 1810	mark@dnw.co.uk
Arkadi Kilman	Consultant (Russian Awards)	020 7016 1700	akilman@dnw.co.uk
Dixon Pickup	Consultant (Militaria)	020 7016 1700	dixon@dnw.co.uk

## TECHNOLOGY and MEDIA

Robin Greville	Chief Technology Officer (Director)	020 7016 1750	robin@dnw.co.uk
Ian Anderson	Head of Online Services (Associate Director)	020 7016 1751	ian@dnw.co.uk
Dan Noonan	Web Developer	020 7016 1700	dan@dnw.co.uk
Ian Kington	Head of Photography (Associate Director)	020 7016 1773	jan@dnw.co.uk
Jan Starnes	Photographic Consultant	020 7016 1774	iank@dnw.co.uk
Henry Browne	Photographic Consultant	020 7016 1774	henry@dnw.co.uk
Tim Ireland	Photographic Consultant	020 7016 1774	timireland@dnw.co.uk
Rachel Aked	Press Officer	07790 732448	rachel@dnw.co.uk
Danielle Quinn	Online Marketing	020 7016 1772	danielle@dnw.co.uk

## UK REPRESENTATIVES

Richard Gladdle	Northamptonshire and the Home Counties	richardgladdle@dnw.co.uk
Garry Charman	The Midlands	garrycharman@dnw.co.uk
Michael Trenerry	The West Country	michaeltrenerry@dnw.co.uk
Colin Fraser	Scotland	colinfraser@dnw.co.uk

## OVERSEAS REPRESENTATIVES

John Burrridge MG	Australia Western Australia	johnburrridge@dnw.co.uk
Tanya Ursual	Canada Ontario	tanyaursual@dnw.co.uk
Michael Gietzelt	Germany Berlin	michaelgietzelt@dnw.co.uk
Eiichi Ishii	Japan Tokyo	eiichiishii@dnw.co.uk
Natalie Jaffe	South Africa Cape Town	nataliejaffe@dnw.co.uk
Dr Andy Singer	United States of America Maryland	andsinger@dnw.co.uk



**DIX NOONAN WEBB Ltd**  
16 Bolton Street  
Mayfair  
London W1J 8BQ  
Tel: 020 7016 1700  
Fax: 020 7016 1799  
VAT No. GB 562 8504 32

Bankers: Lloyds, 39 Piccadilly, London W1J 0AA. Sort Code: 30-96-64. Account No. 00622865  
Swift Code: LOYDGB2L IBAN: GB70LOYD30966400622865 BIC: LOYDGB21085

**Account Enquiries:** accounts@dnw.co.uk  
**General Auction Enquiries:** auctions@dnw.co.uk  
**To place Commission Bids:** www.dnw.co.uk  
**To book Viewing Appointments:** viewing@dnw.co.uk  
**To Order a Catalogue:** www.dnw.co.uk

AN AUCTION OF

JEWELLERY, WATCHES, ANTIQUITIES  
AND OBJECTS OF VERTU

---

VIEWING  
AUCTION

## Live Online Auction

With room bidding available at

16 Bolton Street

London

W1J 8BQ

Free live bidding:

[www.dnw.co.uk](http://www.dnw.co.uk)

Tuesday 10th September 2019

at 1pm

---

VIEWING

Monday 2nd and Tuesday 3rd September

16 Bolton Street, Mayfair, London W1J 8BQ

Strictly by appointment only

Evening Viewing Thursday 5th September 5:00pm to 7:00pm

Wednesday 4th September 10am to 4:30pm

Thursday 5th September 10am to 7pm

Friday 6th September 10am to 4:30pm

Monday 9th September 10am to 4:30pm

The Morning of the Sale 10am to 12 noon

16 Bolton Street, Mayfair, London W1J 8BQ

Public viewing

---

In sending commissions or making enquiries please contact:

Frances Noble or Laura Smith

---

# Summary of Information for Buyers

---

## Registering to Bid

It is strongly recommended that you contact us as early as possible if you wish to bid in one of our auctions and have never previously registered with us. This may be done via our website ([www.dnw.co.uk](http://www.dnw.co.uk) > [Your Account](#) > [Account Authorisation](#)), by email to [auctions@dnw.co.uk](mailto:auctions@dnw.co.uk) or by telephone to 020 7016 1700. The period directly before our auctions is extremely busy and we cannot guarantee that the registration process, which may include security checks, can be carried out in time for you to bid if your request is received by us at a late stage.

## Bidding Priority

Please note that we prioritise executing commission bids as early as possible in order to secure the lot for you at the cheapest possible price. It is therefore entirely possible that a lot can sell at your top bid to another bidder. To avoid this happening we offer an optional 'Plus 1' bidding increment facility, whereby if the bidding is against you at your maximum bid the auctioneer will execute one further bid on your behalf. Please note that in the event of identical top bids priority is given to the first bid received.

## Placing Bids

### Live Bidding via [www.dnw.co.uk](http://www.dnw.co.uk)

You may bid in real time from your computer or mobile device. We provide an optional live video and audio feed of the auctioneer, allowing you to participate in much the same way as attending the auction. You may see your invoice and pay online directly after you've finished bidding. **There is no additional charge for this facility.**

### Advance Bidding via [www.dnw.co.uk](http://www.dnw.co.uk)

We strongly advise this method if you wish to leave bids in advance as it is the easiest, most accurate and flexible way to leave your bids and gives you total control over them right up to the point that the lot is offered for sale. Bids made online cannot be seen by others and only become live at the point the lot is being sold. Up until this time your bids can be easily altered or cancelled. An automated email is sent to confirm any changes made. **There is no additional charge for online bidding** and it is not necessary to pre-register a payment card in order to do so.

### Postal and Telephone Bids

Whilst we are still happy to execute all bids submitted to us using post or telephone, it should be noted that all bids left with us in these ways will be entered at our offices using exactly the same bidding facility to which all our clients have access. **There is, therefore, no better way of ensuring the accuracy of your advance bids than to place them yourself online.**

If you are registered with DNW you may bid by email to [auctions@dnw.co.uk](mailto:auctions@dnw.co.uk) or by telephone to 020 7016 1700. *All bids placed by email or telephone must be received before 16:00 on the day preceding the sale.*

A bidding form is included in the back of this catalogue. If you wish to use this please fill it in carefully, to include all relevant information. *Please ensure that you post this form so that it arrives, at the latest, the day before the sale.*

### Bidding in the Auction Room

You are very welcome to attend the auction and bid in person if you are registered with DNW. Please note that the auction room is situated on the third floor of a Georgian building which doesn't have a lift. You may pay for and clear your lots during the auction.

## **Saleroom Notices**

Should the description of a lot need to be amended after the publication of this catalogue, the amendments will appear automatically on the DNW website, [www.dnw.co.uk](http://www.dnw.co.uk). All such amendments are also incorporated in the List of Saleroom Notices pertaining to this auction which are posted separately on the website. The auctioneer will refer to any notices at the time any affected lot is offered for sale.

## **Catalogue Illustrations and the Internet**

Prospective bidders are reminded that the DNW website features high-resolution colour illustrations of every lot in this auction. There may also be additional illustrations of any lot.

## **Buyers' Premium**

The rate for this sale is **24%** of the Hammer Price (+ VAT where applicable)

## **Importation Duty**

Lots marked 'x' are subject to importation duty of **5%** on the Hammer Price unless re-exported outside the EU.

## **Treated Gemstones**

It is common practice for many gemstones to be subject to various treatments to improve their appearance. Sapphires and rubies are routinely heat treated to improve their colour and clarity, emeralds may be treated with oils or resin, other gemstones may be subject to treatments such as staining, irradiation or coating. Jade may be bleached, polymer/resin filled or dyed, or a combination of treatments used. Bidders should be aware that, unless stated to the contrary in the catalogue description, it should be assumed that the gemstones may be treated. Where reports are provided from gem laboratories, the opinions as to gradings and treatments of stones may differ slightly between laboratories and DNW cannot be held responsible for any discrepancies.

## **Unmounted Gemstones**

Please note that VAT at 20% is chargeable on the Hammer Price of unmounted gemstones, excluding diamonds, rubies, sapphires and emeralds, and relevant lots are marked with an asterisk \*.

## **Export of Ivory**

The US Government has banned the import of ivory into the USA.

## **Export of Other Organic Materials**

Other organic materials, such as coral and tortoiseshell may be covered by CITES legislation, and this may or may not impact export to other countries, please see [www.cites.org](http://www.cites.org) for more information.

## **Export of Watches**

Please note that watches by CORUM, FRANCK MULLER, PIAGET, TUDOR AND ROLEX are subject to import restrictions into the USA. Please also note that in some circumstances we are unable to ship the watch with its strap due to certain import restrictions regarding material derived from endangered or otherwise protected species.

## **Prices Realised**

The hammer prices of lots sold at DNW auctions are posted at [www.dnw.co.uk](http://www.dnw.co.uk) in real time and telephone enquiries are welcome from 09:00 on the day after the auction.

## **Payment**

You may access your invoice shortly after the hammer has fallen on your last lot. As we weigh lots at the time of cataloguing most shipping is already calculated, enabling you to settle your account, clear and receive your lots in a timely fashion. As noted above, auction attendees may pay and clear during the course of the auction as soon as they have bid on their last lot.

*Full Terms and Conditions of Business are available to read in the back of this catalogue and on our website.*

---

# Contents

---

*Please note: Lots will be sold at a rate of approximately 120 per hour*

**Tuesday 10 September 2019 at 1pm**

Jewellery .....	1-237
Ancient Jewellery and Antiquities .....	238-243
Objects of Vertu.....	244-264
Watches .....	265-282

---

## Forthcoming Auctions

---

**12 September 2019**

**British and Irish Banknotes**

**17 September 2019**

**Ancient Coins**

**Russian Coins and Historical Medals**

**18 and 19 September 2019**

**British and World Coins, Tokens and Historical Medals**

**25 and 26 September 2019**

**Orders, Medals, Decorations and Militaria**

**1 October 2019**

**World Banknotes**

**2 October 2019**

**The Collection of World Tokens formed by Bob Lyall**

**3 October 2019**

**British Tokens**

**12 and 13 November 2019**

**British and World Coins, Tokens and Historical Medals**

**26 November 2019**

**Jewellery, Antiquities, Watches and Objects of Vertu**

**4 and 5 December 2019**

**Orders, Medals, Decorations and Militaria**

All dates are provisional. Please see [www.dnw.co.uk](http://www.dnw.co.uk) for more details and the latest updates

Jewellery

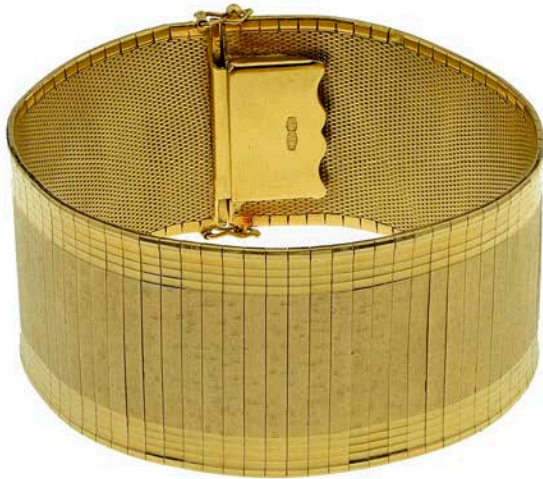


# Jewellery

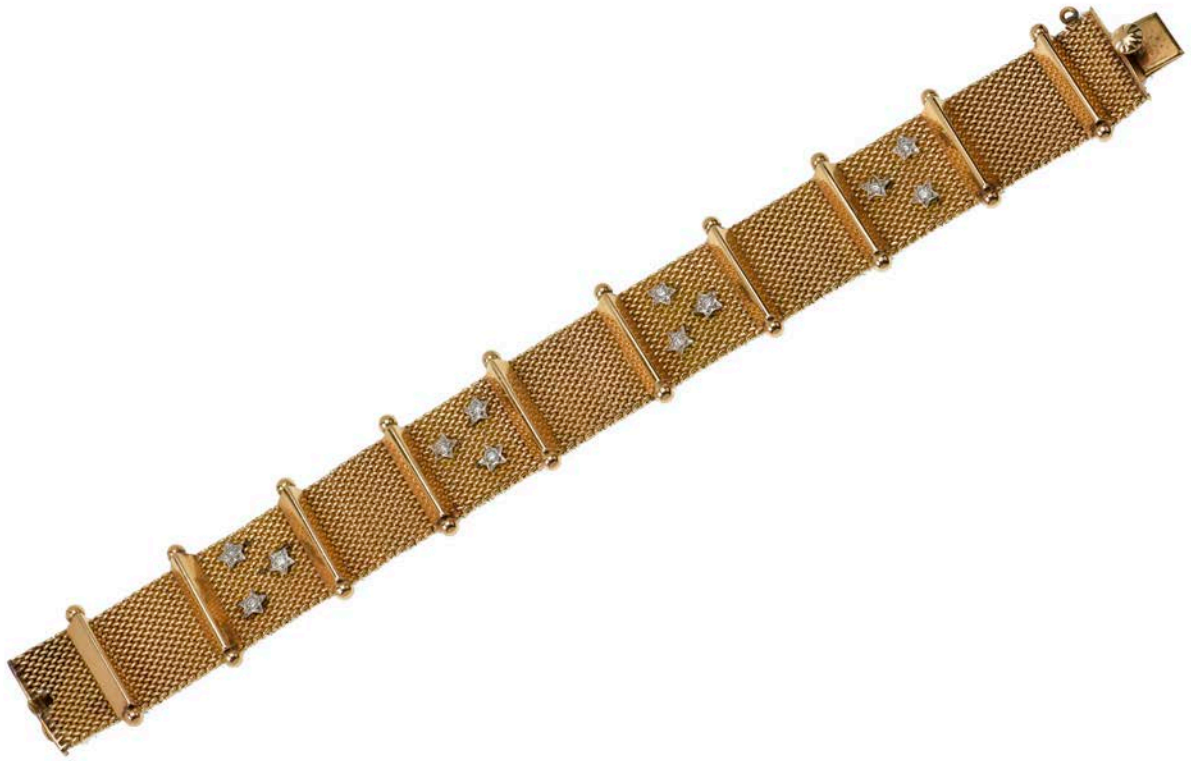
- 
- 1** A THREE COLOUR TRACK-LINK BRACELET, with textured decoration, clasp stamped '750', length 18cm. £600-£700



- 
- x2** A BROAD TRACK-LINK BRACELET, the narrow track links with textured finish and reeded polished borders, with mesh-link base underneath, clasp stamped '78VI' and '750', bracelet length 19.5cm. £1,600-£2,000







**AN 18CT GOLD AND DIAMOND MESH BRACELET**, the mesh weave decorated with brilliant-cut diamond set stars, and applied with vertical spacer bars and bead terminals, stamped '750', length 18.4gm. £1,200-£1,500



**A DOUBLE CURB-LINK BRACELET**, with polished and textured detail, stamped '750' for 18ct, length 18cm. £500-£600



- 5 A CASED PAIR OF VICTORIAN LONG DROP EARPENDANTS, the long tapered drops with textured finish, supporting applied giardinetto detail and reeded bead drop below, suspended from stylised flowerhead surmounts, to hook fittings, in semi fitted case, length 67mm. £300-£500

- 6 A PAIR OF GARNET EARPENDANTS, the pierced work surmounts each centred with an oval cabochon garnet, suspending a drop below, each with a larger cabchon garnet, the mounts decorated with C-Scrolls, on loop fittings, length 6.2cm. £200-£300J



7

A LATE VICTORIAN SAPPHIRE AND PEARL CURB-LINK BRACELET, the bracelet composed of graduated curb links, the larger links alternately set with a sapphire or half pearl, to later lobster claw clasp, and padlock clasp, *bracelet length 21cm.*

£100-£200



8

TWO VICTORIAN BANDED AGATE BROOCHES, the matching brooches each centred with rectangular banded agate within a surround of round banded agate cabochons, all collet set in yellow precious metal, with further ropetwist detail, *lengths 47 and 45mm.*

£200-£300



9

A HARDSTONE BUCKLE BROOCH, the shaped rectangular hoop of polished carnelian, with two central pear-shaped carnelian cabochons, mounted in yellow precious metal, with foliate details to either end, *length 47mm.*

£200-£300



10



**AN 18CT GOLD DIAMOND SET NECKLACE**, the fine belcher-link centred with a brilliant-cut diamond, in rubover setting, reverse stamped '0.17', clasp stamped '18k 750', chain length 36cm. £240-£340

11



**A 9CT ROSE GOLD ALBERT CHAIN**, the links stamped '375', to 9ct gold swivel attachment, suspending a short section of similar chain, with rolled gold T-bar, chain length including swivel 48cm, short section of chain 3.5cm. £300-£400

12



**TWO GOLD SOVEREIGNS AND A GOLD HALF SOVEREIGN**, comprising a Victoria sovereign, 1872; a George V sovereign, 1911; and an Edward VII half sovereign, 1907. £600-£650

13

**TWO CHAIN BRACELETS**, comprising a gate-link bracelet, with padlock clasp stamped '9ct', and a hollow curb-link bracelet, links stamped '9c', to padlock clasp, hallmarked. £300-£400





A HOOP LINK BRACELET, composed of alternate double and single hoop links, clasp stamped '750' for 18ct gold, length 21cm. £500-£600



A MULTI STRAND BRACELET, the five textured snake-link chains to clasp stamped '750', bracelet length 18cm. £600-£800



AN 18CT GOLD TRIPLE ROW BRACELET, composed of three rows of articulated textured chevrons, clasp stamped '750 18k', length 18.5cm. £800-£1,000



A LARGE QUANTITY OF GEM SET AND COSTUME RINGS, mostly modern, including opal, sapphire, diamond, turquoise, seed pearl, and agate set examples, as well as paste and synthetic stone set examples. £200-£400



A COLLECTION OF ASSORTED SEALS, including a bloodstone inset fob seal in scrolled gold mount, two further fob seals, a seal ring, a selection of hardstone panels, mounted and unmounted, some carved, a selection of mother o' pearl counters and a pair of gold mounted pince-nez. £100-£150

19



SIX 19TH CENTURY AND LATER BROOCHES, comprising a turquoise and half pearl cluster bar brooch, a riding crop and fox mask bar brooch with rose-cut diamond set eyes, and handle, a citrine and seed pearl set target brooch, two seed pearl set initial brooches and a seed pearl glazed brooch. £150-£200

20



A SMALL COLLECTION OF JEWELLERY, comprising a long 9ct gold guard chain, two Victorian gold bar brooches, a further tied ribbon bow brooch and a gold plated quizzing glass, guard chain length 136cm. £140-£180

21



A COLLECTION OF GENTLEMAN'S DRESS ACCESSORIES, including a gentleman's cased dress set, comprising a pair of cufflinks and three collar studs, each with octagonal mother o' pearl panel with a central cabochon sapphire, mounts stamped 'gold & plat', in gilt tooled leather case, a cheroot holder, stamped '14k', in Dunhill box, a traditional ski pole tie clip, a horse's bit brooch, a llama bar brooch, a silver Viking ship brooch, a stickpin (damaged) and a 'rolled gold' retractable pencil. £100-£200



A SILVER MULTI-ROW CHAIN NECKLACE, BY TIFFANY & Co., centred with a heart motif, the fine mesh chains to a ring and baton clasp, stamped 'TIFFANY & CO', with full hallmark for London, 2003, length 40cm. £200-£300



A DIAMOND, EMERALD AND CULTURED PEARL SET PENDANT, the large cultured pearl within a spaced surround of alternate claw set brilliant-cut diamonds and round-cut emeralds, mounted in yellow precious metal, to polished tapered bale, length, including bale, 30mm. £300-£400

A PAIR OF SOUTH SEA CULTURED PEARL AND WHITE STONE EARCLIPS, the large creamy white cultured pearls beneath claw set triangular-cut white stone surmounts, mounted in yellow precious metal, to clip and post fittings, stamped '14k', earclip length 20mm. £100-£140







A SINGLE ROW PINK FRESHWATER CULTURED PEARL NECKLACE, the continuous strand of slightly graduated pearls of pink tint, *necklace length 80cm.*

£500-£600

---

26

**A THREE STONE DIAMOND RING**, the three uniform brilliant-cut diamonds claw set, mounted in white and yellow precious metal, stamped '18ct', total diamond weight approximately 0.35 carats, ring size L½. £60-£80



---

27



**TWO VICTORIAN/EDWARDIAN RINGS**, the first a five stone sapphire and diamond set tapered band ring with scrolled shoulders, by Deakin & Francis, hallmarked for Birmingham, 1904; the second a five stone diamond ring, with scrolled shoulders, hallmarked for Birmingham, 1909, and bearing maker's mark 'WG&S', ring sizes K and O respectively. £240-£300

---

28

**TWO VICTORIAN RINGS**, the first a five stone band ring set with alternate mixed-cut rubies and rose-cut diamonds, to scrolled shoulders, shank hallmarked and inscribed 'HP to Eamm, 2.7.78'; the second centred with a quatrefoil flowerhead of half pearls, with small round-cut sapphires between, to foliate shoulders and reeded shank, hallmarked, ring size N and O respectively. £300-£400



---

29

A DIAMOND TWO ROW RING, claw set with old-cut and single-cut diamonds, between scroll shoulders, gold mounted, and a and a single-stone diamond ring, claw set with a brilliant-cut diamond, shank stamped 'plat 18ct' ring sizes P and N respectively. £300-£400



---

30



THREE VICTORIAN HALF PEARL SET RINGS, the first with slightly tapered band set with five graduated half pearls, hallmarked for 15ct gold, maker's mark 'WGSG', the second with black enamel setting, the third with applied rectangular panel and scrolled border centred with a half pearl, ring sizes all M, (leading edge). £200-£300

---

31



AN EARLY 20TH CENTURY EMERALD AND DIAMOND CLUSTER RING, shank stamped '18ct plat', a four stone (of five) diamond ring, claw set and a 9ct gold wedding band, first ring size M. £140-£160



A COLLECTION OF ANTIQUE BROOCHES, including two hardstone inset Scottish brooches, a dog bar brooch, stamped '15c', a garnet and rose-cut diamond set fly bar brooch, an Edwardian sapphire set bar brooch, a Royal Artillery 9ct gold flaming grenade brooch and five further brooches. £260-£360



A COLLECTION OF ASSORTED JEWELLERY AND WATCHES, comprising ruby and diamond cluster ring, shank stamped '585', a lady's dress wristwatch, by Bucherer, clasp stamped '750', another by Hamilton, stamped '14k', a peridot cluster pendant and matching single stone earstuds, a lozenge-cut amethyst dress ring, an amethyst pendant, a purple stone set necklace and bracelet, and further items including a large collection of gentleman's dress accessories. £500-£700



A GROUP LOT OF ASSORTED VICTORIAN JEWELS, including an amethyst set hinged bangle bangle, a seed pearl set hinged bangle, an emerald and diamond crescent brooch, a golden topaz and seed pearl cluster brooch, a pietra dura double panel brooch, a bar brooch suspending five monogrammed disc drops, a pair of white metal lorgnettes, and four further brooches. £500-£700



ASSORTED JEWELLERY, comprising an 18ct white gold, diamond,???? assorted gem set line bracelets, an Indian panel ring, a rose quartz carved pendant, a silver bracelet by LEHRER, bracelets by Thomas Sabo, costume jewellery, etc £200-£400



**36** A GEM SET NOVELTY DUCK BROOCH, BY CARTIER, the animated duck in polished yellow gold, with pavé set diamond detail to the wings and tail, lozenge-shaped cabochon emerald accent, emerald eyes and a *corallium Rubrum* coral set beak, the reverse signed 'Cartier', stamped '750', numbered '655363' and with French eagle's head assay mark and lozenge-shaped maker's mark, in Cartier suede pouch, brooch length 32mm.

£800-£1,200

Please note coral is covered by CITES legislation and may be subject to import/export and trade restrictions.



37

**AN 18CT GOLD AND DIAMOND BRACELET**, composed of matt textured weave and crossover design to the centre, incorporating an undulating row of graduating claw set brilliant-cut diamonds, clasp stamped '750', length 18.3gm. £1,400-£1,800



38

**AN 18CT GOLD JARRETIÈRE BRACELET**, the polished brick-link design with chevron terminal, and matt fold-over clasp fitting, bearing maker's mark 'E.T.' and stamped '18ct', length 20.4cm. £900-£1,200





A MATCHED TURQUOISE SUITE OF JEWELLERY, MID 20<sup>TH</sup> CENTURY, comprising a foliate-link bracelet, a stylised foliate brooch and a pair of screw back cluster earrings, all set with round cabochon turquoise, all mounted in yellow precious metal and stamped 'MEK, 18K', bracelet length 16.5cm. £500-£600  
Accompanied by a handwritten receipt from Mékong Bijouterie in Phnompenm, dated '2-2-67'.



TWO 18K DIAMOND BROOCHES, the first modelled as a foliate spray with central diamond highlight, stamped 'ITALY 18k', the second as an entwined knot, with diamond detail, stamped '18c', lengths both 64mm. £500-£700



A 9CT GOLD PANEL BRACELET, with lozenge detail, and an oval locket, stamped 14k, bracelet length 17cm, locket 4.3cm. £240-£260





**A DIAMOND SET DISC PENDANT ON CHAIN**, the concave disc with textured finish, set with four brilliant-cut diamonds, on hinged suspensory loop, suspended from an 18ct gold ropetwist chain, disc with scratched numerals 1.62 to the reverse for the diamond weight, and stamped '750', the chain stamped '750' with maker's mark three pointed crown, *disc diameter 3cm, chain length 66cm.*

£900-£1,200



**AN ITALIAN 18K GOLD AND DIAMOND BIRD BROOCH, CIRCA 1950s**, the head and neck feathers set with single-cut diamonds, with textured spreading wings and tail plumage, reverse stamped 'ITALY 18K', with unassociated Kutchinsky box, *length 77mm.*

£300-£500



**44** A DIAMOND AND CULTURED GULF PEARL SET NECKLACE, the large cultured pearls between diamond set shaped caps, with pierced work pear-shaped bead links between pavé set with single-cut diamonds, to a belcher-link back chain, clasp stamped '925', necklace length 39.5-46.5cm. £1,200-£1,500

**45** A VICTORIAN DIAMOND SET FOLIATE BROOCH, set throughout with old brilliant-cut diamonds, mounted in gold and silver, total diamond weight approximately 2.2 carats, length 38mm.

£500-£700



**46** A SAPPHIRE AND DIAMOND SET FLORAL SPRAY BROOCH, the tied floral spray set throughout with old-cut and rose-cut diamonds, each flowerhead centred with a collet set mixed-cut sapphire, mounted in yellow and white precious metal, length 68mm. £300-£500

47 A PAIR OF DIAMOND SET FLOWERHEAD EARCLIPS, the pansy style flowerheads each with five petals pavé set with graduated old brilliant-cut diamonds, around a cluster of stamen and a central pinched collet set old brilliant, mounted in white precious metal, to clip fittings, *length 28mm.*

£1,000-£1,500





**A LONG MULTI GEM SET AND DIAMOND CHAIN**, the long chain composed of spectacle set round double rose-cut ruby and pale green sapphire or chrysoberyl links, all accented with trios of small brilliant-cut diamonds, with belcher-link sections between, mounted in yellow precious metal, *length 103cm.*

**£2,000-£2,400**

A PAIR OF CITRINE PENDANT EARCLIPS, the large pear-cut citrine drops collet set beneath claw set round-cut citrine surmounts, mounted in yellow precious metal, stamped '18ct', to clip fittings, length 61mm.

£600-£800



A LARGE GEM SET AND DIAMOND DRESS RING, set the large slightly domed bezel pavé set with irregular-shaped faceted citrine, amethyst and aquamarine, within a brilliant-cut diamond set border, mounted in yellow precious metal, shank stamped '18k', ring size P.

£1,500-£2,000





AN AMETHYST NECKLACE, the fringe of graduated claw set oval mixed-cut amethysts to a belcher-link back chain, mounted in yellow precious metal, necklace length 39.5cm. £600-£800



AN AMETHYST CHAIN NECKLACE, the belcher-link chain spaced with spectacle set pear-cut amethyst links and textured cube bead links, mounted in silver gilt, stamped '925', length 128cm. £80-£100



**FOUR BEAD NECKLACES**, comprising a citrine and freshwater cultured pearl necklace, a two row amethyst and freshwater cultured pearl necklace, an agate, freshwater pearl and ruby bead necklace, a kyanite flat bead necklace, with rose quartz set centrepiece, together with a further chain necklace. (5) £200-£300



A SMALL COLLECTION OF ASSORTED JEWELLERY, including a *corallium Rubrum* coral bead necklace, an amethyst and diamond bar brooch, an emerald and seed pearl bar brooch, a turquoise and diamond three stone ring, a diamond two stone crossover ring, a large pair of turquoise set earpendants, a three row chain bracelet spaced with seed pearls and further assorted items. £300-£500

Please note coral is covered by CITES legislation and may be subject to import/export and trade restrictions.



A COLLECTION OF ASSORTED JEWELLERY, including a two row *corallium Rubrum* coral bead necklace, another of branching coral beads, and a similarly set brooch, assorted gold rings, a lady's wristwatch, by Tudor, a Victorian silver buckle bangle, a Victorian gold hinged bangle with applied bead and wire decoration (hinge damaged) and two yellow precious metal mounted turquoise bead bracelets. £600-£800

Please note coral is covered by CITES legislation and may be subject to import/export and trade restrictions.





ASSORTED JEWELLERY, comprising globe pendant, stamped '750' to the suspensory loop, a 9ct gold gate-link bracelet, a 14ct gold lady's wristwatch by Onsa, a smoky quartz pendant, an amethyst brooch, six assorted rings, and a boulder opal pendant on chain, globe pendant length 4cm. £600-£800



AN EASTERN CORAL FRINGE BRACELET, the ropetwist chain supporting collet set *corallium Rubrum* drops below, yellow precious metal mounted, a 9ct gold hollow curb-link bracelet, a pair of jade set cufflinks, an 18ct gold three stone garnet ring, a Victorian gold stickpin, (jade untested), bracelet length 19cm. £400-£600

Please note coral is covered by CITES legislation and may be subject to import/export and trade restrictions.



**A VICTORIAN GOLD MOUNTED BANDED AGATE BROOCH**, the central cabochon stone within a border of black and white enamel, with beaded detail, with glazed compartment verso (pin replaced), a 15ct gold mounted hardstone cameo brooch, carved to depict a classical bearded male profile, within C-scroll mount, and a 9ct gold mounted shell cameo inset navette-shaped ring, *first brooch diameter 26mm, second length 26mm, ring size N.* £400-£500

59



**A SHELL CAMEO BROOCH**, the oval shell cameo carved to depict a bacchante, wearing a lion pelt on her shoulder and a head-dress of fruiting vines, collet set in yellow gold, *length 49.5mm.* £100-£150

The bacchantes were the female followers of the cult of Bacchus, the Ancient Greek god of wine, fertility and religious ecstasy.

60

**A SHELL CAMEO BROOCH**, the oval shell cameo carved to depict a bacchante, wearing a headdress and necklace of fruiting vines, collet set within a ropetwist mount, mounted in yellow gold, *brooch length 44mm.*

£100-£150





**AN EARLY 19TH CENTURY 'BERLIN' IRONWORK NECKLACE**, the composed of graduated polished steel and ironwork 'cameos' of classical profiles (one loose), within cast ironwork floral surrounds, with scrolled and foliate links between, to a Bacchus-mask ironwork clasp, *length 49cm*. £200-£400

The central three cameos depict famous classical ideals of male beauty (l-r):

1. Apollo, the handsome young god of light and the arts, after the famous Classical statue, the Apollo Belvedere, now on display in the Museo Pio-Clementino, in the Vatican City.
2. Antinous, a favourite of the emperor Hadrian, considered a perfect male beauty. This depiction, with fruiting vines in his flowing hair, is after a Classical bust of Antinous as Dionysus/Bacchus, now in the Palazzo Aldobrandini in Rome.
3. Eros, the god of love, after the Classical sculpture the Eros of Centrocelle, now on display in the Museo Pio-Clementino in the Vatican City.

The remaining smaller cameos depict profiles of male and female classical youths.

The first factory producing ironwork jewellery opened in Berlin in 1804, although in 1806, when Napoleon captured the city, it is recorded that the casts were removed to France, where manufacture continued. After 1815, and the return of the Bourbons to the French throne, this heroic classical subject matter, associated with the French Empire, quickly went out of fashion.



A LARGE AMETHYST BEAD NECKLACE, of graduated faceted beads, to a ring bolt clasp, stamped '925', necklace length 56cm.

£200-£300



**AN AMETHYST AND DIAMOND OVAL CLUSTER RING**, the oval mixed-cut amethyst millegrain set within a surround of single-cut diamonds, two colour precious metal mounted, shank stamped indistinctly, *ring size J ½*

**£600-£800**

**AN AMETHYST AND DIAMOND DRESS RING**, the large cushion-shaped mixed-cut amethyst above a frilled surround of single-cut diamonds, with two lines of millegrain set scissor-cut ruby accents to each corner, between single-cut diamond set shoulders, mounted in white precious metal, *shank stamped 'GB&A' and '18k', ring size T.*

**£1,600-£2,000**





**AN IRANIAN NEPHRITE BEAD NECKLACE**, the polished nephrite beads spaced by yellow precious metal beads with applied bead and wirework detail, to a fancy-link back chain, clasp stamped '750', necklace length 41.5cm. £200-£300

**AN ENAMEL, DIAMOND AND CONCH PEARL BROOCH**, designed as a foliate spray with two old-cut diamond set leaves, green enamel foliage and rose bud detail, the foliage enclosing a conch pearl, pin later added, length (excluding pin) 3.2cm. £700-£900



**A CABOCHON EMERALD LINE BRACELET**, the round cabochon stones in split collet link settings, with small baton-links between, mounted in yellow precious metal, clasp stamped '18k', length 17.5cm. £200-£300



**68** AN OPAL GRADUATED BEAD NECKLACE, the graduated spherical polished milky opal beads with faceted crystal spacers between, to plain cylindrical clasp '9ct', necklace length 43.5cm. £500-£600



**69** A PEARL, RUBY AND EMERALD BEAD LONG CHAIN NECKLACE, the belcher-link chain spaced with ruby beads, emerald beads, and pearls (*untested for origin*), to a swivel fastener, stamped eagle's head guarantee marks to the ring hoops to each side of the swivel fastener, length 170cm. £2,000-£2,400



**AN INDIAN ENAMEL AND GEM SET PENDANT**, the round pendant decorated front and back with red, white, green and blue foliate enamel, with a central lasqué-cut diamond set flowerhead motif to the front and a border of foliate carved alternate ruby and emerald beads, *diameter 36m*. £500-£700



**TWO INDIAN 14CT GOLD BANGLES**, the first with pierced decorated with foliate detail, the second with chevron and beaded detail, both with pairs of opposing makhara heads, import marks for 14ct gold, and maker's marks GU Ltd, *inner diameter 5.4mm and 5.6mm respectively*. £600-£800





72 AN INDIAN DIAMOND NECKLACE AND EARPENDANTS SUITE, the necklace of festoon design, set throughout with brilliant-cut diamonds, the central section suspending small diamond set fringe drops, with corresponding details to the sides, on beaded panel back chain, with hook fastener, the earpendants of conforming design, on post fittings, yellow precious mounted, necklace length 39cm, earpendants 5.8cm. £3,000-5,000



**A FRINGE NECKLACE, 1970s**, composed of a graduating baton fringe, with textured finish, beneath undulating linear decoration, clasp stamped '750' for 18ct white gold, *length 43.5cm.* **£700-£800**



**AN EARLY 20TH CENTURY NAVETTE-SHAPED DIAMOND SET BROOCH**, centred with a line of graduated brilliant-cut diamonds, within an openwork millegrained mount with frilled border, set throughout with rose-cut diamonds, mounted in yellow and white precious metal, *length 47mm.* **£200-£300**



**AN EDWARDIAN DIAMOND BROOCH**, centred with an old-cut diamond, within pierced wheel surround, between tapering shoulders set with single-cuts and rose-cuts, two colour precious metal mounted, *principal diamond approximately 0.45 carats, length 5.7cm.* **£200-£300**

76

**AN INDIAN ENAMEL NECKLACE**, decorated with red and green enamel oval highlights, centred with an arc suspending three graduating fringe drops below, with bead terminals, to hook clasp fastener, yellow precious metal, unmarked, *length 50.5cm.* £700-£800



77

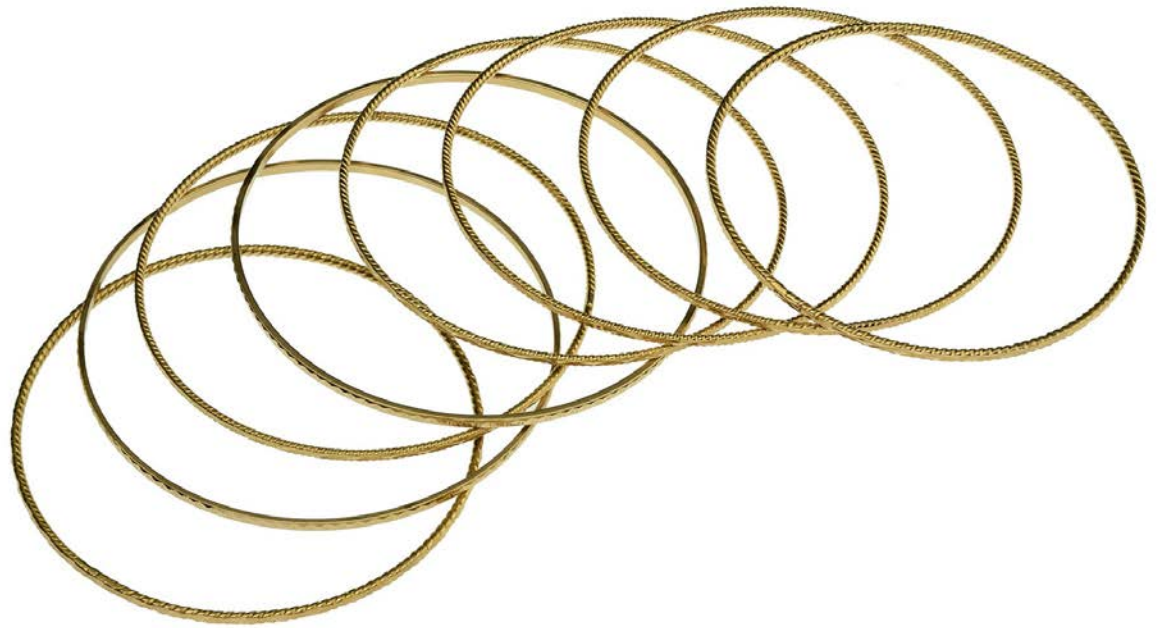


**A GREEN ENAMELLED SUITE**, comprising a pendant/brooch, a ring and a pair of earclips, each decorated with green enamel and coloured floral detail, the domed earclips with fringe detail below, the ring with wavy outline, each piece stamped '14k', *pendant length (including hinged suspensory loop) 5.5cm, ring size N.* £260-£360

78



**AN OPENWORK EMERALD SET BRACELET**, the two colour precious metal pierced work panel links each centred with a step-cut emerald, *length 17.5cm.* £600-£700



79 A COLLECTION OF IRANIAN BANGLES, in yellow precious metal, comprising a set of six narrow bangles, a further pair of narrow bangles and a pair of broader bangles, all with incised decoration, bangle diameters 60-64mm. £1,000-£1,200



80 AN INDIAN GEM SET HINGED BANGLE AND SIMILAR CLUSTER RING, the openwork hinged bangle of floral design, set with round-cut and cabochon rubies, sapphires, garnets, turquoise, half pearls, emeralds, etc., mounted in yellow precious metal, and a similarly set stylised bombé dress ring, to a wirework shank, bangle internal diameter 55mm. £800-£1,200





**81** TWO PAIRS OF INDIAN EARRINGS, the first with openwork shaped panel drops, with a fringe below, to foliate surmounts, set throughout with round-cut rubies, emeralds and sapphires, to screw back clip fittings; the second with hemi-spherical drops inset with glass stones, supporting a fringe of seed pearl drops, *first earrings length 71mm.* £200-£300

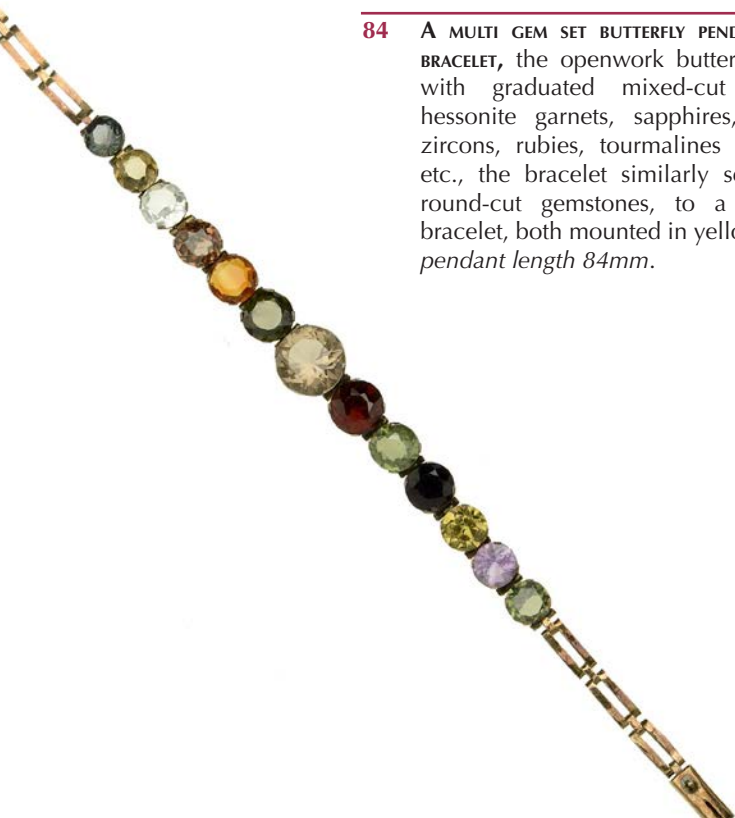
**82** AN INDIAN RUBY AND DIAMOND SET PENDANT, of shaped lozenge outline, pieced decorated detail throughout and centred with a cabochon ruby within a lasque-cut diamond surround, the pendant mounted with further cabochon rubies, with similarly set pendant drops below, on rigid suspensory loop, the reverse with engraved decoration, unmarked, *length 5.8cm.* £300-£400





**83** A CORAL NECKLACE, the necklace composed of oval *corallium Rubrum* cabochon links collet set in yellow precious metal, clasp stamped '750', necklace length 41cm. £300-£500

Please note coral is covered by CITES legislation and may be subject to import/export and trade restrictions.



**84** A MULTI GEM SET BUTTERFLY PENDANT AND MATCHING BRACELET, the openwork butterfly set throughout with graduated mixed-cut almandine and hessonite garnets, sapphires, amethysts, blue zircons, rubies, tourmalines and paste stones, etc., the bracelet similarly set with graduated round-cut gemstones, to a narrow gate-link bracelet, both mounted in yellow precious metal, pendant length 84mm. £400-£600





**85** TWO MULTI GEM SET NECKLACES, variously set with mixed-cut and cabochon gemstones including amethyst, almandine, pyrope and hessonite garnets, moonstone, blue zircon, sapphire, peridot, etc., the first of swag fringe design, mounted in yellow precious metal, the second of narrow rivière design, mounted in gilt metal, *first length 39cm.* £300-£400



**86** A SYNTHETIC RUBY AND GEM SET BROAD HINGED BANGLE AND MATCHING EARPENDANTS, the broad textured hinged bangle with raised polished detail, set with cabochon turquoise, and cabochon and mixed-cut synthetic ruby and green stone accents, the matching triangular drop earpendants, with a fringe of disc-shaped drops below, similarly set with turquoise, synthetic rubies and blue stones, mounted in yellow precious metal, unmarked and untested, *earpendant length 73mm.* £1,200-£1,800



**A LONG DIAMOND AND GULF PEARL NECKLACE**, the baroque cultured pearls spaced at intervals with diamond set roundel beads, each set with lasque diamonds, to an S scroll clasp, *length 120cm.*

**£2,400-£3,000**





- 88** A VICTORIAN PERIDOT, PEARL AND DIAMOND BROOCH/PENDANT, the oval mixed-cut peridot collet set within a wreath surround millegrain set with old and rose-cut diamonds, with bouton pearls to the cardinal points, mounted in gold and silver, (pearls untested for origin), width 29.5mm. £340-£400

- 89** A TWIN PEARL AND DIAMOND BANGLE, centred with two pearls (untested for origin), between tapered lines of old brilliant and rose-cut diamonds, mounted in yellow precious metal, internal bangle width 55mm. £400-£600



## Niels Erick From

**Niels Erick From (1908-1986)** was born in Denmark and trained as a silversmith, opening a shop in 1931 from which he sold some of his jewellery designs. In 1944 the N E From smithy is first registered in Nakskov. There are two distinctive periods of design within From's production. In the 1940s we see floral pieces with sinewy foliage details, and this style characterised his early years of production. By the 1960s, we see the introduction of bolder modernist designs, the necklace being offered for sale here being a typical example of this second period. The designs are similar to many Georg Jensen pieces of this period. In 1960, From's son-in-law, Hilmer Jensen, had joined the management team and after Niels Erick's death in 1986, Jensen took over the running of the firm. The company was wound up a few years later.

---

90



**TWO DANISH SILVER BROOCHES, BY N E FROM**, the first centred with a cabochon amber within a border of flower heads and foliage, the second a trio of stylised leaves, both signed to the reverse, and a Swedish silver and rose quartz brooch, bearing maker's mark 'K & L', possibly for Kordes & Lichtenfels, *first brooch 41mm, second 41.5cm, third 52mm.*

£80-£100

---

91

**A DANISH SILVER AND RHODOCHROSITE RING, BY N E FROM**, the cabochon stone in collet setting and plain polished mount, to broad shank, stamped to underside 'STERLING DENMARK N E FROM 925S', *ring size I (leading edge).*

£50-£70



---

92

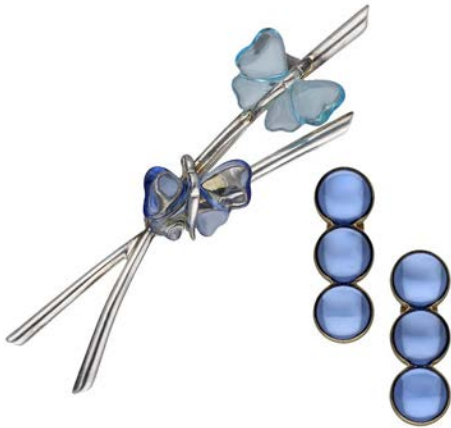


**A DANISH SILVER AND ROSE-QUARTZ RING, BY N E FROM**, the central cabochon rose-quartz within a surround of flowerheads and leaves, to a broad tapering shank, stamped 'STERLING DENMARK N E FROM 925S', *diameter of ring head 25mm, ring size (leading edge) M.*

£90-£120



THREE GLASS PENDANT NECKLACES, BY LALIQUE, the first of smoky brown colour and whorl design, the second of grey hue and stylised foliate form, the third a blue textured heart, each scratch signed 'Lalique, France' to the reverse, suspended on cord or ribbon, together with another similar green glass heart pendant signed 'Baccarat', first length 5.5cm, second 5.4cm, third 4.2cm, fourth 4cm. £160-£200



A PAIR OF GLASS CABOCHON SET EARCLIPS AND A GLASS BUTTERFLY BROOCH, BOTH BY LALIQUE, the earrings composed of trios of cabochon blue glass stones, the brooch composed of two crossed polished batons supporting two moulded blue glass butterflies, earclips and brooch stamped 'LALIQUE' to the reverse, earclip length 30.5cm, brooch length 85mm. £100-£140

A GEM SET FLOWER BROOCH, modelled as a tied floral spray, the three flowerheads set with round-cut blue topaz, garnets and peridots, accented with diamonds, mounted in yellow precious metal, stamped '14k', length 52.5mm. £100-£150



96



A RUBY AND DIAMOND RING, the asymmetrical foliate motif set throughout with rose-cut diamonds and accented with a round-cut ruby, a modern brilliant and an old brilliant-cut diamond, mounted in gold and silver, principal diamonds weight approximately 0.45 and 0.55 carats respectively, ring size L. £500-£700

97

A DOUBLE PEARL AND DIAMOND RING, the pearls each set between two old cushion-shaped diamonds, with old brilliant and rose-cut diamonds set flared detail between, to bifurcated shoulders, mounted in gold and silver (pearls untested for origin), ring size F-G. £500-£600



x 98



A THREE STONE DIAMOND RING, the tapered band ring gypsy set with three graduated old brilliant-cut diamonds, mounted in rose gold, bearing a Russian left facing kokoshnik mark for 56 zolotniks, St Petersburg, 1899-1908, ring size Q, principal diamond weight approximately 0.6 carats. £1,000-£1,200

99

A DIAMOND AND SYNTHETIC CABOCHON RUBY RING, the oval synthetic ruby collet set between two trefoils of old and rose-cut diamonds, between bifurcated foliate shoulders, accented with small single-cut diamonds and sapphires, ring size K½. £200-£300





**A SINGLE STONE DIAMOND RING**, the cushion-shaped old-cut stone in open claw setting to reeded shoulders, mounted in 18ct gold, shank hallmarked, *diamond approximately 0.85 carats, ring size S. £500-£700*

**A SINGLE STONE RUBY RING**, the oval mixed-cut ruby in rubover setting within a tapered polished yellow precious metal mount, stamped '750', *ruby weight approximately 1.37 carats, ring size M. £5,000-£7,000*

*The ruby has been verbally assessment at GCS laboratory (Gemmological Certification Services) confirming Burmese origin.*



102



AN AQUAMARINE SET PENDANT, the oval mixed-cut aquamarine collet set within a embossed scrolled surround, to later suspensory loop and flattened snake-link chain necklace, pendant length 54mm, aquamarine weight approximately 32 carats. £600-£800

103

A HEART-SHAPED CITRINE AND SEED PEARL PENDANT, the heart-shaped double cabochon citrine beneath a seed pearl set crown surmount, mounted in yellow precious metal, to plain suspensory loop, length 49mm.

£150-£200



104



AN EARLY 20TH CENTURY SEED PEARL AND AQUAMARINE BROOCH/PENDANT, of open kite-shaped whiplash design, accented with seed pearls, around a central pear-shaped briolette-cut aquamarine, with hinged pendant fitting verso and brooch fitting, stamped '14k', width 26.5mm.

£100-£150

105

A MOONSTONE HEART AND ARROW RING, the claw set heart-shaped cabochon moonstone bezel pierced by a rose-cut diamond and ruby set arrow, mounted in yellow precious metal, stamped '18ct', ring size N.

£200-£300



106

A 19TH CENTURY FRENCH LOCKET ON A CHAIN, the oval hinged locket accented with garnets and seed pearls, bearing French eagle's head assay mark, on fancy snake-link chain, and another larger Victorian oval hinged locket, with engraved decoration all over, *first locket length 22mm.*

£200-£300



107



A PAIR OF VICTORIAN EARPENDANTS, the pear-shaped bead drops beneath shaped surmounts, with applied bead and ropetwist detail, together with a further pair of carved *corallium Rubrum* coral drops, lacking fittings and a pair of garnet set drop earpendants, *first earpendants length 45mm.*

£240-£300

Please note coral is covered by CITES legislation and may be subject to import/export and trade restrictions.

108



TWO VICTORIAN BROOCHES, the first a Victorian memorial brooch, the central oval cabochon banded agate supporting a seed pearl set cross motif, to a piercedwork surround, glazed locket verso, cased; the second a Victorian tassel brooch, of scrolled lozenge-shaped boss form, with seed pearl and aquamarine accents and tassel drop below, *first brooch length 42.5mm, second brooch width 50mm.*

£400-£600

- 
- 109** A SOLITAIRE DIAMOND RING, the brilliant-cut diamond in raised six claw setting, white precious metal mounted, shank with maker's mark and stamped '18ct', and '1.27' for diamond weight, *ring size M*.  
£1,800-£2,000



- 
- 110** A PAVÉ SET DIAMOND ETERNITY BAND, the narrow round band pavé set throughout with small single-cut diamonds, in blackened precious metal mount, *ring size L*.  
£160-£200



- 
- 111** A GEM SET SWIVEL ETERNITY BAND, the central band channel set with calibré-cut rubies to one side and sapphires to the other, with two graduated single-cut diamond set swivel bands, mounted in white precious metal, *ring size M*.  
£400-£600



- 
- 112** A DIAMOND ETERNITY RING, set throughout with brilliant-cut diamonds, white precious metal mounted, *ring size O*.  
£100-£150





113



A PAIR OF SAPPHIRE AND DIAMOND EARSTUDS, the rectangular cut sapphires bordered by small brilliant-cut diamonds, in wirework mounts, white precious metal mounted, *length 9.5mm.*

£200-£300

114

A SAPPHIRE AND DIAMOND THREE STONE RING, the central rectangular step-cut sapphire claw set between two brilliant-cut diamonds, white precious metal mounted, unmarked, *ring size M.*

£1,200-£1,600



115



A TWO COLOUR SPRUNG BANGLE, of 'parentesi' design, unmarked, *internal bangle width 61mm.*

£200-£300

116



A DIAMOND SET BRACELET, the fancy double curb-link chain bracelet with textured finish and accented with claw set brilliant-cut diamonds, clasp stamped '750', *bracelet length 18.2cm, total diamond weight approximately 1.75 carats.*

£1,000-£1,500

117



A RUBY SET TWO COLOUR SPRUNG BANGLE, of 'parentesi' design in two colour precious metal, the white links to the front each pavé set with brilliant-cut diamonds and centred with an oval cabochon ruby, mount stamped '750' and '18k', *internal bangle width 56mm.*

£600-£800

- 
- 118** A PAIR OF TURQUOISE AND DIAMOND INSET BROOCHES, each with cabochon turquoise thorax and abdomen, and textured wings and head inset with graduated old brilliant-cut diamonds, mounted in yellow precious metal, stamped 'Italy', lengths 32.5 and 34.5mm respectively.

£600-£800



- 
- 119** A DIAMOND SET FLOWERHEAD BROOCH, the five textured petals, around a central old-cut diamond within a cluster surround of stamen, the replaced brooch fitting bearing French eagle's head assay marks, (with traces of clear enamel/varnish to the petals, back and front), width 27mm.

£200-£300



- 
- 120** A DIAMOND SET FOLIATE BROOCH, 1950s-1960s, modelled as a spray of hazel nuts and leaves, the nuts pavé set with single-cut diamonds, mounted in yellow and white precious metal, reverse stamped 'Italy K18', in an unassociated brown suede case, signed 'Van Cleef & Arpels', length 49mm.



121



AN 18CT GOLD RUBY AND DIAMOND PENDANT, claw set with a brilliant-cut diamond, with oval mixed-cut ruby below, on bifurcated suspensory loop, hallmarked to reverse, maker's mark 'DJT', length 21mm.

£260-£360

122



A PINK SAPPHIRE AND DIAMOND BRACELET, the oval mixed-cut pink sapphire claw set between navette-shaped single-cut diamond set links, mounted in white precious metal, clasp stamped '750', length 17.5cm.

£1,500-£2,000



**A PAIR OF RUBY AND DIAMOND EARCLIPS**, the scrolled earclips pavé and claw set throughout with small brilliant-cut diamonds, suspending detachable briolette-cut ruby drops below, mounted in white precious metal, stamped '18k', to clip and post fittings, *total length 46.5mm*.

£600-£800

**A PAIR OF MULTI GEM SET FLORAL EARCLIPS**, composed of clusters of gem set flowerheads, each with claw set round-cut rubies, emeralds or sapphires around central brilliant-cut diamonds, around a central flowerhead of brilliant-cut diamonds around an emerald, mounted in yellow precious metal, *length 24mm*

£1,600-£2000





FIGHTING OVER FISH

## A Private Collection of Jewellery by Paul Preston

Born in Leeds, from 1958 Paul Preston originally practised architecture, a career he pursued for just two years before retiring to Lands End, to becoming a self-taught jeweller. Supporting himself by diving for crawfish and later recovering non-ferrous metals from wrecks, Paul realised he could 'live off the sea', and there was no pressure to make 'commercial' work. Initially inspired by the work of artists such as Breon O'Casey, Preston's jewellery shows a combination of fine workmanship and imaginative ideas, often incorporating themes of nature, especially birds and fish, making him one of the most distinctive contemporary British jewellers today.

Paul now works from his studio in West Wales. He has works in many public and private collections, including the Victoria & Albert Museum, London.



- 125** A GOLD BAND RING, BY PAUL PRESTON, with spot detail in vari-coloured precious metals, engraved to the shank 'July 2003', with maker's mark 'PP', and signature spaceship motif, band width 5.5mm, ring size K, (leading edge). £300-£400



- 126** TWO SILVER PLAQUES AND A SMALL OVAL SILVER PLAQUE, BY PAUL PRESTON, the first a rectangular panel, entitled below 'Gannets Fighting Over Fish', dated to the top corners 'May 2003', maker's mark 'PP' to bottom left corner, and signature spaceship motif to bottom right; the second a rectangular panel entitled 'Ex Dragon Head, January 2003', bearing maker's mark 'PP' and signature spaceship; and a small oval disc, decorated with a dragon, the reverse with maker's mark and titled 'Dragon', first length 88mm, second 58mm, third 21mm.

£100-£200



**127** A PHOENIX GOLD PANEL BROOCH, BY PAUL PRESTON, the shaped rectangular panel depicting a phoenix rising from flames below, decorated in vari coloured precious metals, the detail applied and layered, above a chequered ground, the panel within a raised border with ruby highlight to the top, and pendant hoop to the base, the reverse engraved with an image of a phoenix, and inscribed below: '22 March 1975' and '22 March 2005, Suzie, All my love David', stamped with maker's mark 'PP', and with the maker's signature spaceship motif, *dimensions 40mm x 33mm.*  
£800-£1,000

**128** AN 18CT GOLD HEAVY CHAIN NECKLACE, BY PAUL PRESTON, the solid circular belcher-links variously hand engraved with ribbed, spot, chevron or cross detail, the link beside the clasp engraved with the date 'FEB 2003', with maker's mark 'PP', the slim hook fastener with full London hallmark for 2002, *length 58cm.*  
£2,600-£3,000







129



A PAIR OF SAPPHIRE AND LAPIS LAZULI SET BATON CUFFLINKS, the hexagonal section lapis lazuli batons, with collet set cabochon sapphire terminals, in rigid silver gilt mounted channel set with calibr -cut sapphires, stamped '925'.  
£150-£200

130

A PAIR OF RUBY SET BATON CUFFLINKS, with reeded cylindrical batons, the central mount accented with channel set calibr -cut rubies, mounted in silver gilt, stamped '925'.  
£150-£200



131

A PAIR OF SAILING BOAT CUFFLINKS, each with a dingy in full sail, the sails set with brilliant-cut diamonds, with ruby burgee above, and calibr  sapphire set hull below, on chain suspensions, to a diamond and sapphire set ship's wheel, white precious metal mounted, stamped '750', length of boat 16mm.  
£1,600-£1,800



**132** A PAIR OF CORAL SKULL CUFFLINKS, the large and small carved *corallium Rubrum* coral terminals modelled as human skulls, with yellow precious metal belcher-link chain connections. £320-£360

Please note coral is covered by CITES legislation and may be subject to import/export and trade restrictions.



**133** A PAIR OF DIAMOND PANEL CUFFLINKS, the chequered rectangular panels edged to two sides with single-cut diamonds, stamped '18k 750', on swivel back fittings, length 18mm. £400-£500



AN AMERICAN MOTHER O' PEARL GENTLEMAN'S DRESS SET, comprising a pair of cufflinks, four buttons and three collar studs, each with octagonal terminal centred with a round mother o' pearl panel, within engraved detail surround, mounted in yellow and white precious metal, mounts stamped 'W-14k gold', in a red velveteen case signed 'Henry Silberfeld, Diamonds, 1395 Broadway, New York'. £100-£150

135



A DIAMOND SET NECKLACE AND MATCHING BRACELET, the chevron-link chain necklace with beaded borders, to a central flowerhead diamond cluster, between claw set brilliant-cut diamond shoulders, clasp stamped '18k Italy', together with matching bracelet, unmarked, *necklace length 46.5cm, bracelet length 18cm.* £800-£1,200



136

A DIAMOND LINE BRACELET, the narrow articulated bracelet composed of claw set brilliant-cut diamonds, mounted in 9ct white gold, clasp hallmarked and bearing maker's mark 'AFJ', *bracelet length 18cm.* £600-£800





A MOONSTONE RIVIÈRE NECKLACE, composed of slightly graduated oval cabochon moonstones in linked collet settings, mounted in white precious metal, necklace length 44cm. £120-£150

138 A 19TH CENTURY WHITE PASTE SET BRACELET, the round-cut white paste links in closed back pinched collet settings, mounted in gold and silver, length 17.5cm. £100-£150



139 A SAPPHIRE AND DIAMOND BRACELET, composed of linked collet set brilliant-cut diamonds and round-cut sapphires, mounted in yellow precious metal, clasp stamped '750', bracelet length 18.5cm. £400-£500



140



A PAIR OF 'TRINITY' THREE COLOUR HOOP EARRINGS, BY CARTIER, the three entwined hoops of yellow, rose and white gold, on hinged and post fittings, signed and stamped 'CARTIER 1997, 750' and numbered 'NT 348', with Cartier box and red suede pouch, earrings length 17mm. £600-£800

141

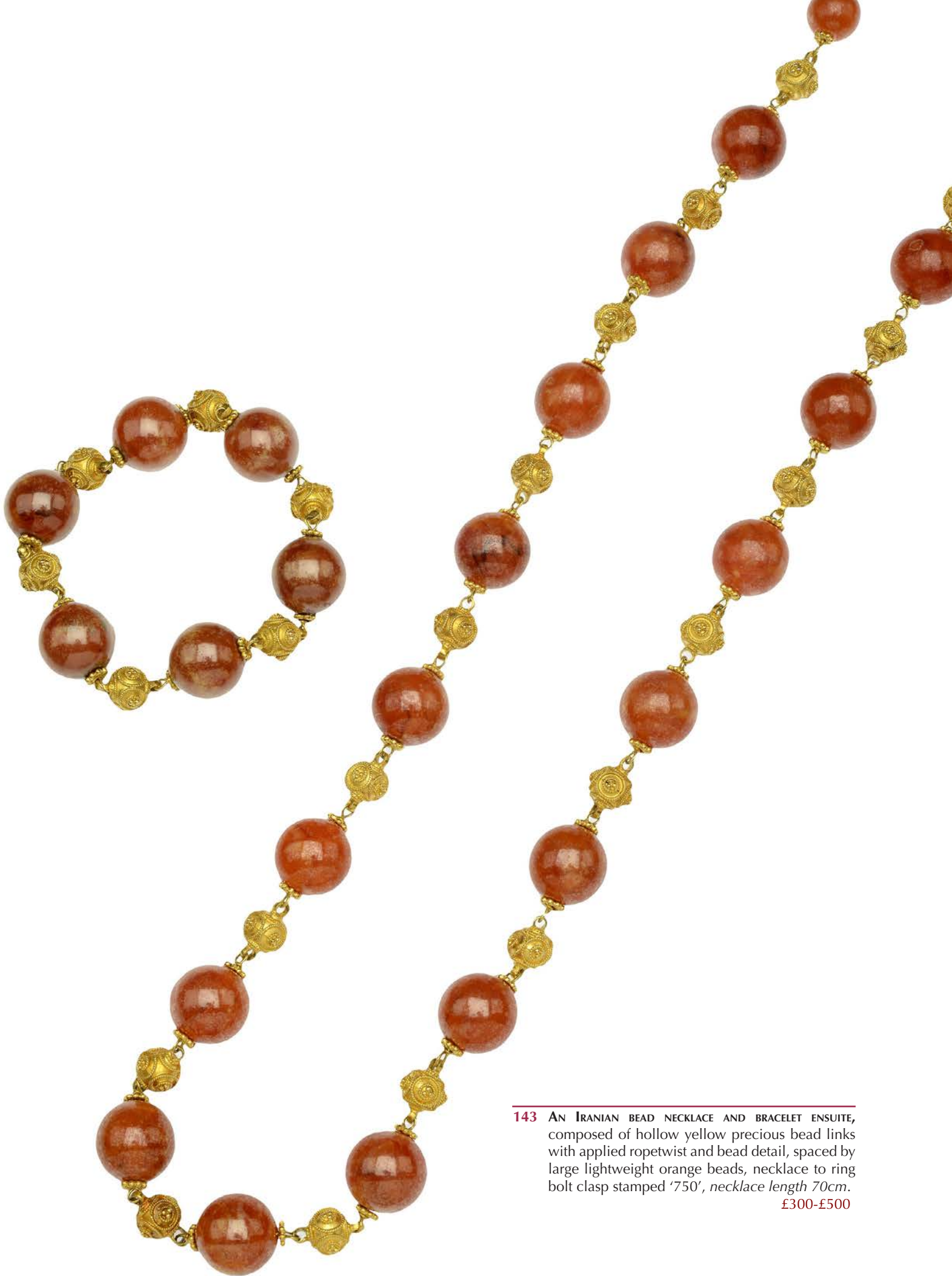
AN 18CT GOLD 'DOUBLE COEURS' FLEXIBLE RING, BY CARTIER, designed as a twin row of polished heart motifs, signed 'Cartier' in script, and 'CARTIER 1994', numbered 'D8473' and stamped '750', ring size N (leading edge). £600-£800



142



AN 18CT WHITE GOLD 'TANK FRANÇAISE' BAND RING, BY CARTIER, the flat band with track-link style detail, signed and stamped '750', and numbered 'GO2292', ring size M. £400-£500



**143** AN IRANIAN BEAD NECKLACE AND BRACELET ENSEMBLE, composed of hollow yellow precious bead links with applied ropetwist and bead detail, spaced by large lightweight orange beads, necklace to ring bolt clasp stamped '750', necklace length 70cm.  
£300-£500

144



A RUBY AND DIAMOND SET BUCKLE RING, the broad band ring with buckle detail set with calibr -cut rubies and graduated single-cut diamonds, interior stamped '18ct&plat', ring size, leading edge, G-H. £300-£500

145

AN 18CT GOLD OPAL AND DIAMOND RING, the oval opal claw set within a surround of single-cut diamonds, between trifurcated scroll shoulders, hallmarked for London, 1976, ring size P. £260-£300



146



A DIAMOND SET STAR CLUSTER RING, the round bezel with a raised star motif, set throughout with rose-cut diamonds, to central single-cut diamond, yellow and white precious metal mounted, ring size M. £100-£200

147

A THREE ROW DIAMOND BAND RING, the broad polished band ring channel set to the front with three rows of baguette-cut diamonds, mounted in yellow precious metal, stamped '18k' and '750', ring size N½. £300-£500







A PAIR OF 1960s RUBY AND DIAMOND EARCLIPS, the bombé half hoops of openwork ropetwist lattice form, with collet set calibré-cut ruby and diamond accents, mounted in yellow precious metal, with indistinct French eagle's head assay marks, to clip back and post fittings, *length 24mm.* £400-£500

A TREATED BLUE DIAMOND AND GEM SET RING, the brilliant-cut treated blue diamond collet set above a bombé mount pavé set with small brilliant-cut white diamonds, between channel set calibré ruby shoulders, mounted in yellow and white precious metal, stamped '18ct', *principal blue diamond approximately 1.5 carats, ring size N.* £600-£800





**150** A TWO ROW GRADUATED CULTURED PEARL NECKLACE WITH A GEM SET CLASP, the two rows of slightly graduated cultured pearls to a round cluster clasp set with half pearls, and round mixed-cut and cabochon gemstones, including blue zircon, emerald and ruby, mounted in yellow precious metal, stamped '14k', necklace length 36cm. £200-£300



**151** A CULTURED PEARL AND DIAMOND BRACELET, the three rows of slightly graduated cultured pearls to a double flowerhead cluster clasp set with single and brilliant-cut diamonds, white precious metal mounted, bracelet length 18.5cm. £150-£200



**152** AN 18CT GOLD RUBY SET HOOP BROOCH, BY CARTIER, the comprising a cirlet of textured and pierced concave roundels, each centred with a ruby highlight, the reverse signed 'Cartier' and numbered '20431', later pin fitting, with Cartier box, diameter 32mm. £700-£900

**153** A THREE ROW GRADUATED CULTURED PEARL NECKLACE, the three strands of graduated cultured pearls to a single and brilliant-cut diamond set geometric panel clasp, stamped 'GARRARD', necklace length 39cm. £300-£500



**154** A CHINESE BROOCH, modelled as *Shou Lao*, the Chinese God of longevity, riding a deer, and carrying a *ruyi* sceptre, the reverse with vertically applied brooch fitting, length 4.8cm. £600-£800



**155** A SINGLE ROW CULTURED PEARL BRACELET, to a reeded spherical 14ct gold clasp, bearing UK import marks, bracelet length 19cm. £100-£140



## John Donald

**John Donald** (born 1928) studied metalwork at the Royal College of Art in London, where he became firm friends with fellow students Robert Welch and Gerald Benney. He set up as a jeweller and became part of that select group of British designers and jewellers based in London, who revolutionised the field in the swinging 1960s and 1970s. He went on to establish a highly successful business in London and Geneva as well as gaining an international reputation, his patrons including HRH the late Princess Margaret. His work is on display in the Victoria and Albert Museum, The Worshipful Company of Goldsmiths and the Schmuckmuseum in Pforzheim.

Donald's work is characterised by unusual textures and forms, often incorporating geometric patterns and displaying crystals and other less common gemstones.

- 
- 156** AN 18CT GOLD BRACELET, BY JOHN DONALD, 1965, the articulated bracelet composed of broad panels of striated and polished cubes, with maker's mark 'JAD' and hallmarked for London, 1965, with box, the silk signed 'JOHN DONALD Goldsmith & Silversmith 28 Queens Mews W.2', length 16.4cm. £2,600-£3,000

For a description of the technique used in the above bracelet, see Donald's autobiography **Precious Statements: John Donald designer Jeweller**, by John Donald & Russell Cassleton Elliott; published McNidder & Grace, 2015, page 58: "I textured the gold work by imitating the striations in the crystal (pyrite) and all these cubes were cut from square wire and individually soldered together".

For an example of a wristwatch incorporating an identical bracelet strap see the illustration on page 56.



**157** AN 18CT GOLD, DIAMOND AND LAPIS LAZULI PENDANT, BY JOHN DONALD, 1975, the five petal open flowerhead of textured outline, one petal inset with a panel of lapis lazuli, with central brilliant-cut diamond and and diamond set stamen, maker's mark 'JAD' and hallmarked for London, 1975, on unassociated 18ct gold chain, *pendant length 4cm, chain length 66cm.* £1,800-£2,400





**AN 18CT GOLD DIAMOND SET RING, BY JOHN DONALD**, centred with an oval olive green glass stone in four claw setting, the bifurcated shoulders each inset with an old-cut diamond, (one diamond larger), the shank of pierced open work 'nugget flake' design, hallmarked for London, 2002, with signed John Donald green box, *ring size O*. **£800-£1,000**

John Donald designed the ring using gemstones provided by the vendor. A copy of a letter from John Donald's workshops in Cheapside accompanies this lot.

For a description of the technique used in the above ring, see Donald's autobiography **Precious Statements: John Donald designer Jeweller**, by John Donald & Russell Cassleton Elliott; published McNidder & Grace, 2015, page 60; "Another experiment of mine was dropping molten gold into a bucket of water. Sometimes this created 'cornflakes' which became my 'nugget flake'..." "when the flakes were removed from the water, they were flattened and soldered together in a panel..."



**AN AMERICAN GOLD ABSTRACT RING, BY ED WIENER, 1960s-70s**, of molten abstract design, maker's mark EW, stamped both '18k' and '14k', together with a small duck brooch, with mother o' pearl body and ruby eye, stamped '14k' and two tropical fruit charms - a pineapple and a bunch of bananas, *ring size Q (leading edge)*. **£400-£600**

**Ed Wiener (1918-1991)** was a New York modernist jewellery designer, who started his career in Provincetown and Greenwich Village in the 1940s, working mainly in silver. By the 1950s he began experimenting with the use of gold and precious jewels. His studios were at 53rd Street, and on Fifth Avenue, where he continued to work until his death.

## Gerda Flöckinger

Born in Innsbruck, Austria in 1927, **Gerda Flöckinger** came to England in 1938, and studied at St Martin's School of Art and the Central. In her early work she experimented with enamels and rough gems. From the early 1960s, she came to rely more on the flame and on fusion techniques, arriving at an intensely original and personal style. incorporating texture and fluidity. Movement is very evident in her work, supplied by using fine rods of half melted spiral threads, as seen in this particular example.

She was the first living female designer to have an exhibition at the Victoria and Albert Museum in 1971, and again in 1986. In 1991 she was recognised by Queen Elizabeth for her contribution to the arts and awarded a CBE.

See: Hinks, P., *Twentieth Century British Jewellery 1900-1980*, Faber and Faber, pages 125-127.

---

**160** A GOLD AND DIAMOND BAND RING, BY GERDA FLÖCKINGER, the textured finish with applied sweeping linear detail, with gold beaded highlights and collet set to one side with two brown brilliant-cut diamonds, stamped maker's mark 'G.F' on circular plaque to inner shank, *ring size M*. £900-£1,200



161



A DIAMOND SET FLOWER NECKLACE, ON CHAIN, 1960s/1970s, the four open petals of textured finish, centred with a domed cluster of single-cut diamonds, and further diamonds to the stem, unmarked, on fine box-link chain, clasp stamped '750' for 18ct gold, length 2.8cm. £240-£300

162

A PAIR OF EMERALD AND DIAMOND EARRINGS, the slightly tapered rectangular panel drops each centred with six calibr -cut emeralds, within a frilled border of slightly graduated brilliant-cut diamonds, suspended from a brilliant-cut diamond surmount, to stud fittings, length 22mm.

£300-£400



163



A PAIR OF PAV  SET EMERALD HOOP EARRINGS, the large hinged hoop earrings pav  set to the front and inside back with small round-cut emeralds, mounted in yellow and blackened white precious metal, stamped '750', diameter 43mm. £1,400-£1,800





**A THREE STONE DIAMOND RING**, the central brilliant in raised wirework six claw mount, between two smaller brilliants, in four claw setting, above bifurcated shoulders, white precious metal mounted, shank not hallmarked, *central diamond weight approximately 1.3 carats, two smaller diamonds 0.25 carats each, total diamond weight approximately 1.8 carats, ring size M.*

**£1,600-£2,000**

**AN EMERALD AND DIAMOND RING**, the cushion-cut emerald claw set between marquise and brilliant-cut diamond shoulders, mounted in yellow precious metal, shank stamped '14k, 585', *ring size M½.*

**£2,600-£3,000**



166



A RUBY SET HORSESHOE BROOCH, claw set throughout with mixed-cut rubies, (pin later added), length 25mm.

£500-£700

167



A RUBY AND SEED PEARL SET BRACELET, composed of 11 round or oval graduating mixed-cut rubies, spaced by pairs of seed pearls, claw set in articulated mounts, between later added twin chain extension sections, to a three stone ruby and seed pearl set clasp (two seed pearls missing), length 17.5cm.

£800-£1,000



**A PAIR OF 19TH CENTURY GEM SET PENDANT EARRINGS**, the drops modelled as hands clasping ribbon bows, set throughout with rose-cut diamonds, suspending a fringe of claw set round-cut sapphire and ruby drops below, to a rose-cut diamonds and sapphire set floral surmount, mounted in yellow precious metal, *length 56mm.* **£900-£1,200**

**A PAIR OF ROSE-CUT DIAMOND SET FLORAL DROP EARPENDANTS**, the flowerhead drops and foliate surmounts set throughout with rose/lasqué-cut diamonds, in pinched settings, mounted in yellow precious metal, to post fittings, *length 26mm.* **£200-£300**



## Andrew Grima

**Andrew Grima** (31 May 1921-26 December 2007) was born in Rome to Italian-Maltese parents. Raised in London, he studied mechanical engineering at the University of Nottingham. He joined the Royal Engineers, serving in Burma during World War II. After the war, he started working in his father-in-law's jewellery firm in London. In 1951t when his father-in-law died, Grima took over the business and sold it to a stone dealer in Knightsbridge, on condition that he stayed on as a designer.

Entirely self taught, his limitless imagination led him to create bold and striking designs - each piece being hand wrought, and typically only creating one of each design. In 1960 Grima's talent was spotted by the art director at Goldsmiths' Hall, **Graham Hughes**, who introduced his protégé to many of the rich and famous people who were to become his clients. In 1966 his success was sealed when Prince Philip chose one of his pieces, a stunning ruby brooch, as a present for the Queen, 1966 also being the year that Grima received his royal warrant. In the late 1960s he opened his exclusive gallery in Jermyn Street, Mayfair - the opening event being hosted by Lord Snowdon, then married to Princess Margaret, and his career continued to escalate, attracting a clientele of royalty and society jet-setters of the day.

Winner of numerous awards for his contribution to the jewellery industry, including the Duke of Edinburgh Prize for Elegant Design in 1966, and the De Beers Diamonds International Awards - awarded 13 times, (more than any other jeweller), today, Grima is recognised as being one of the great modernist jewellery designers of the 20th century.



**170** A GOLD AND DIAMOND SET LEAF BROOCH, BY ANDREW GRIMA, the realistically modelled lime leaf applied with a brilliant-cut diamond highlight, in four claw setting, stamped to the reverse 'GRIMA' on plaque, and '750' to the stem, length 5.5cm.  
£2,600-£3,600

- 171** A GREEN BERYL 'GIFT' PENDANT, BY ANDREW GRIMA, the square domed cabochon wrapped in a crossover tie, with diamond highlights to the centre, beneath an angular bow surmount inset with a line of brilliants, reverse stamped 'GRIMA', and '750', dimensions of beryl 82 x 28 x 15mm, length 5.4cm. £3,000-£4,000





**AN 18CT GOLD BRACELET, BY ANDREW GRIMA**, composed of tapered links. alternately with textured detail, the lobster clasp stamped 'GRIMA', with import marks for London, 1984, and sponsor's mark 'BAO' for Birmingham Assay Office, *length 18.5 cm.* **£360-£460**



**AN ONYX BEAD AND CULTURED AND MABÉ PEARL NECKLACE, 1980s**, the 18ct gold irregular polished pendant centred with a mabé pearl, hallmarked for London, 1986 and bearing maker's mark 'SLW', suspended on a single row onyx bead necklace, with cultured pearls and irregular gold spacer beads to the front, to reeded cylindrical clasp, *necklace length 40cm.* **£400-£600**



**A DIAMOND AND SAPPHIRE SET BRACELET, CIRCA 1960s/70s**, composed of overlapping textured articulated links, with sapphire and old-cut diamond highlights, yellow precious metal, with safety chain, *length 18cm.* **£700-£900**



**THREE 1970s DRESS RINGS**, the first an oval bombé dress ring, composed of finely worked foliate detail, to a reeded shank with entwined ribbon detail, in yellow precious metal, bearing maker's mark 'G' in lozenge-shaped punch; the second centred with two cabochon turquoise, within an irregular tiered surround of small textured discs with raised polished borders, and accented with claw set single-cut diamonds, to wirework shank, stamped '14k, 585'; the third of flower head design, accented with round-cut rubies and sapphires and a brilliant-cut diamond, stamped 'Italy, 18k', ring sizes O, M and H (with sizing beads) respectively. **£500-£600**



**A GROUP OF FOUR DRESS RINGS, CIRCA 1960s-70s**, the first of textured wrapover design, stamped 'Denmark, 585', the second, a foliate bombé ring accented with single and brilliant-cut diamonds, stamped '750', the third a ram's head dress ring together with a 9ct gold abstract dress ring, with single-cut diamond and round-cut citrine accents. **£800-£1,000**

---

177

A FIVE STONE DIAMOND BAND RING, the slightly tapered polished 18ct gold ring inset with five graduated old brilliant-cut diamonds within navette-shaped setting, mount hallmarked for Birmingham, 1890 and bearing maker's mark 'S D & S Ld', total diamond weight approximately 0.55 carats, ring size M. £300-£500



---

178



A DIAMOND FULL ETERNITY RING, set throughout with brilliant-cut diamonds, mount engraved with repeating decoration, and engraved with names IVOR and ROSALIND to one side, and dates to the other, white precious metal mounted, ring size M. £300-£400

---

179

A SINGLE STONE DIAMOND BAND RING, the polished tapered band centred with a collet set brilliant-cut diamond, mount stamped '18ct', diamond approximately 0.25 carats, ring size N. £200-£300



---

180



A DIAMOND CROSSOVER RING, each terminal set with a cluster of old-cut diamonds, (shank resized), ring size U. £200-£260



181

A DIAMOND CLUSTER RING, the irregular tiered cluster of claw set graduated brilliant-cut diamonds, to polished yellow precious metal crossover mount, ring size O, total diamond weight approximately 2.2 carats.

£300-£500



182

A DIAMOND SET BROAD BAND RING, the large rounded white precious metal band rubover set with brown and white graduated brilliant-cut diamonds randomly set, the ring shank incorporating a concave detail to the design, mount stamped '18k', with maker's mark, ring size approximately M.

£300-£400



## Louis Osman

**Louis Osman** (1914-1996) was *"an architect, goldsmith, draftsman, art historian and art patron; most of all he was a creator of genius"* - Graham Hughes, Art Director of the Goldsmiths' Company.

Osman began his career as a boundary-pushing architect making his name when he rebuilt the bomb damaged Convent of the Holy Child Jesus on Cavendish Square in London, and with his 'architectural tour-de-force' neo-renaissance plate glass palazzo Principal's Lodgings for Newnham College, Cambridge.

In the early 1960s, however, *"Osman moved out of masonry and into precious metal with grace and apparent ease"*. Graham Hughes was, from the first, a champion of Osman, and it was under his direction that the Goldsmiths' Company commissioned Louis first, to design a new treasury for Lincoln Cathedral, and then, in 1969, to make the crown that the Company presented to the Prince of Wales for his investiture at Caernavon Castle - *"the best-known piece of new British gold of [the] century"*. In 1971, the Goldsmiths' Company held the 'Louis Osman Gold Exhibition' at Goldsmiths' Hall, comprising 105 pieces, mostly new and modelled in gold. Besides the pieces produced for exhibitions, much of Osman's work was undertaken on private commissions.

Whether designing a building or a bracelet or a bowl, Osman loved to test techniques and methods to their limits and revelled in the distinctive properties of precious metals, only choosing to work with them in their purest forms.



**183** A TRACK-LINK BRACELET, BY LOUIS OSMAN, 1977, the openwork bracelet of rectangular silver and gold links, with swivel locking clasp, the bracelet unmarked, accompanied by an original receipt dated 20/1/1977 for "Designing and making a bracelet in Britannia Silver and 22 carat gold (Electum)", on Canons Ashby headed paper, bracelet length 18.5cm. £3,000-£5,000

This bracelet was a private commission made by Louis Osman for the vendor of the lot.

ARR will apply to this lot.



184



A DIAMOND, PEARL AND AQUAMARINE NECKLACE, the circular panel set throughout with brilliant-cut diamonds, the panel designed with five-petal flower head motifs, within a diamond border, beneath conforming flower head surmount, and suspending briolette aquamarine drops below, the reverse stamped '750' for 18ct white gold, suspended on three row freshwater pearl necklace to magnetic clasp, together with a pair of aquamarine earrings, *necklace length 40cm.* £100-£200

185

A DIAMOND HEART-SHAPED PENDANT, the heart with central diamond drop, the claw set throughout with brilliant-cut diamonds, white precious metal mounted, (unmarked), on 9ct white gold chain, *pendant length 21mm.* £240-£300



186



A DIAMOND SET PENDANT, of pear-shaped outline and wirework construction, set with old-cut and single-cut diamonds, white precious metal mounted, on 18ct white gold fine chain, *pendant length 36mm.* £500-£700

187



**A PAIR OF SAPPHIRE AND DIAMOND EARRINGS**, the articulated drops composed of collet set brilliant-cut diamonds, with collet set sapphire drops and surmounts, mounted in white precious metal, stud fittings indistinctly hallmarked, *length 15mm*. **£300-£500**

188



**A DIAMOND LINE BRACELET**, composed of articulated cluster links, each centred with a brilliant-cut diamond, within a surround of smaller brilliants, millegrain edged, signed 'Diafini', white precious metal mounted, stamped '750', *length 18cm*. **£2,600-£3,000**



**A DIAMOND DRESS RING WITH MATCHING EARRINGS**, the slightly irregular cluster dress ring composed of claw set marquise-cut diamonds, to bifurcated polished shoulders, mounted in white precious metal, the earrings composed of irregular clusters of marquise, pear and brilliant-cut diamonds, mounted in white precious metal, to screw back stud fittings, *total diamond weight approximately 4.95 carats, ring size N.* £2,000-£3,000

190

**A LARGE EMERALD AND DIAMOND CLUSTER RING**, the cushion-shaped mixed-cut emerald claw set within a cluster surround of marquise-cut diamonds, mounted in yellow precious metal, the gallery and shoulders set with small brilliant-cut diamonds, *emerald weight approximately 20 carats, ring size O.* £4,000-£6,000



191



A PAIR OF EMERALD AND DIAMOND CLUSTER EARCLIPS, the rectangular step-cut emeralds collet set within cluster surround of claw set brilliant-cut diamonds, mounted in yellow precious metal, to clip and post fittings, stamped '18k', length 12.5mm. £600-£800

192

AN EMERALD AND DIAMOND CLUSTER RING, the pear-cut emerald collet set within a cluster surround of claw set brilliant-cut diamonds, between channel set brilliant-cut diamond shoulders, mounted in yellow and white precious metal, shank stamped '18k', ring size S. £1,000-£1,500





**193** A PAIR OF DIAMOND PENDANT EARPENDANTS, each of articulated form, designed with a bow surmount, suspending a vase of flowers, set throughout with brilliant, single and rose-cut diamonds, millegrain edged, with hinged fittings, two colour precious metal mounted, length 5.7cm. £1,500-£1,800







AN AMETHYST AND DIAMOND HINGED BANGLE, the upper section set with graduating round mixed-cut amethysts, with diamond points between, within pierced scrolling mount, the back section probably later replaced, *inner length 5.5cm.* £1,400-£1,600

A VICTORIAN GOLD AMETHYST SET TORQUE BANGLE, the terminals set with hexagonal cut amethysts, in deep collet settings, to hollow bangle, applied with beaded and ropetwist decoration, unmarked, *inner diameter 5.8cm.* £500-£700



196

A DIAMOND FLOWERHEAD CLUSTER RING, composed of claw set brilliant-cut diamonds, mounted in 18ct yellow and white gold, shank hallmarked and bearing makers mark 'EF', total diamond weight approximately 3.2 carats, ring size J½. £1,200-£1,800



197



A FOUR LEAF CLOVER GEM SET BROOCH/PENDANT, claw set with pear-cut emerald, citrine, amethyst, etc., mount stamped '18k', to plain suspensory loop, length 21mm. £200-£300

198

AN AMETHYST AND NEPHRITE FLORAL SPRAY BROOCH, the three carved amethyst flowerheads each centred with a brilliant-cut diamond, with two carved nephrite leaves below, on textured stems, stamped '585' to reverse, on pin mounting, length 6.8cm. £500-£700





**A DIAMOND, ONYX AND MARIALITE BROOCH**, designed with a central onyx set hoop between sinuous old-cut diamond set wings and geometric detail, millegrain edged, and suspending below a fancy-cut oval marialite drop, in claw setting, white precious metal mounted, the frame bearing two stamped marks of male heads, full face, being French import marks, post 1927, for imported platinum items, *width 6.8cm, length 4.2cm.* **£1,600-£2,000**

*Marialite* is also known as purple *scapolite*.

For import marks see: *Guide to Gold Marks of the World*, by Jan Divis: page 103, no 569.



**A PLATINUM SINGLE STONE DIAMOND RING**, the brilliant-cut diamond in four claw setting, the mount decorated both sides with diamond set detail, to a polished shank, stamped '950' for platinum, *principal diamond weight approximately 0.75 carats, ring size K.* **£1,000-£1,200**





A PAIR OF SOLITAIRE DIAMOND EARSTUDS, the two brilliant-cut diamonds in six claw settings, on post fittings, white precious metal mounted, *diamond weights each approximately 1.50 carats.* £4,000-£6,000

202 AN ART DECO STAR SAPPHIRE AND DIAMOND RING, the pale blue sugar loaf cabochon star sapphire in four claw mount, bordered by diamonds, between baguette-cut shoulders and single-cut diamond detail below, within pierced mount, shank stamped 'plat', *ring size N½*.  
£1,500-£2,000





**AN EMERALD, AQUAMARINE AND PEARL PENDANT**, the ovoid cultured pearl drop in brilliant-cut diamond set cap, suspended from a rectangular step-cut emerald and square step-cut aquamarine surmount, to polished tapered bale, on a fine woven-link chain, pendant bale and chain clasp stamped '585', pendant length 43mm. **£600-£800**



**AN EMERALD AND DIAMOND BRACELET**, the step-cut emerald claw set within an open hoop surround set with small brilliant-cut diamonds, between similarly set graduated link shoulders centred with triangular and baguette-cut diamonds, to a fancy ropetwist chain bracelet with sliding adjustable bead clasp, emerald weighs approximately 3.6 carats. **£2,000-£3,000**

205



AN ART DECO SOLITAIRE DIAMOND RING, the brilliant-cut diamond claw set within pierced mount, between geometric diamond set shoulders, shank stamped 'plat' (shank replaced), *principal diamond approximately 1.80 carats, ring size O.*

£2,000-£3,000

206

AN EARLY 20TH CENTURY DIAMOND PANEL RING, the pierced navette-shaped panel millegrain set throughout with single-cut diamonds, with a raised collet set brilliant-cut diamond to either end and central principal brilliant-cut diamond, mounted in yellow and white precious metal, *principal diamond approximately 0.75-0.80 carats, ring size J.*

£900-£1,200



207



**TWO DIAMOND RINGS, 1970s**, the first a solitaire ring, the brilliant-cut diamond in raised six claw setting, in angled mount and textured shoulders, shank with three pointed crown maker's mark, stamped '18k', and '.90' for the diamond carat weight; the second ring claw set with a row of four brilliants, each in four claw mount, to flat textured ring head design, and similarly decorated shoulders, same maker's mark, stamped '18k' and '1.02' for total diamond weight, *ring sizes K and M (leading edge)*.  
£1,000-£1,200

208

**A FIVE STONE DIAMOND RING AND A THREE STONE DIAMOND AND SAPPHIRE RING, 1970s**, the first claw set with five brilliant-cut diamonds, the raised setting between textured shoulders, on broad shank, stamped 18k, with three pointed star maker's mark, the second vertically set with two sapphires and a brilliant-cut diamond, between reeded tapered shoulders, shank stamped '18ct', and 'ZEETA'.  
£400-£600



209



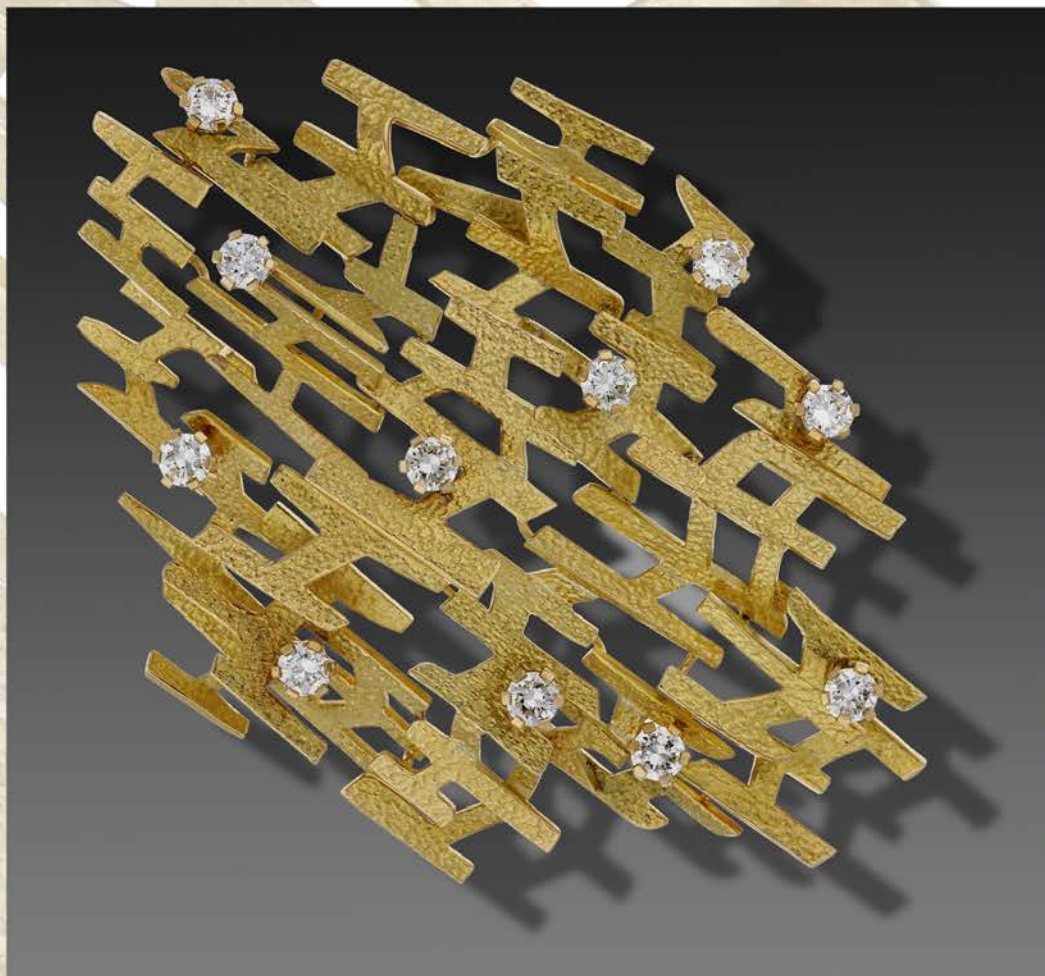
**A THREE STONE DIAMOND RING**, the central brilliant-cut diamond in bold four claw setting, between two marquise-cut diamonds, white precious metal claws, to a yellow precious metal band shank of slightly concave form, *principal diamond approximately 1 carat, shank stamped '18ct', ring size K (leading edge)*.  
£800-£1,200

210

**A SIX STONE DIAMOND RING, 1970s**, the panel of brilliant-cut diamonds each in bold four claw settings, between broad tapering textured shoulders, shank stamped '18ct' with three pointed star maker's mark, *total diamond weight approximately 2.4 carats, ring size M (leading edge)*.  
£800-£1,000







**211** A 1960s/1970s LARGE DIAMOND SET BROOCH, composed of textured angular sections, to three dimensional composition, claw set with brilliant-cut diamond highlights, the reverse with maker's mark in the form of a three pointed crown, stamped '18k' and '2.73' for the total diamond weight, length 8cm. £1,200-£1,400

212



A DIAMOND HALF HOOP RING, set to the front with eight uniform brilliant-cut diamonds, mounted in 18ct yellow gold, shank hallmarked and bearing maker's mark 'E.O', total diamond weight approximately 1.04 carats, ring size N. £300-£400

213

A RUBY AND DIAMOND CLUSTER RING, the pear-shaped cluster centred with a mixed-cut ruby within a brilliant-cut diamond border, the cluster obliquely set, between bifurcated shoulders, two colour precious metal mounted, with Garrards box, ring size O. £200-£300



214



A DIAMOND SET ETERNITY BAND, the narrow band set round with single-cut diamonds, in white precious metal, with engraved detail to the galleries, stamped 'plat' and 'V9357', ring size N. £200-£300

215

A FRENCH RUBY AND DIAMOND TRIPLE ROW RING, the broad flat band set with a row of round-cut rubies between two rows of brilliant-cut diamonds, mounted in yellow gold, with a French eagle's head assay mark and lozenge-shaped maker's mark, ring size O. £240-£300



216

**AN 18CT GOLD BRACELET**, composed of double row of hoop links bordered by matt brick links, the bracelet slightly angled to the centre, clasp stamped '750 18k', length 18.7cm. £800-£1,000



217 **AN 18CT GOLD GEM SET MULTI-ROW BRACELET**, composed of textured articulated row, to a clasp centred with a ruby bordered cluster in outer row of sapphire set flowerheads, clasp stamped '750', length 19cm. £1,000-£1,400



218

A CABOCHON EMERALD AND DIAMOND RING, the rectangular cabochon emerald between trios of single and brilliant-cut diamonds, all millegrained collet set, mounted in white precious metal, *ring size M. £800-£1,000*

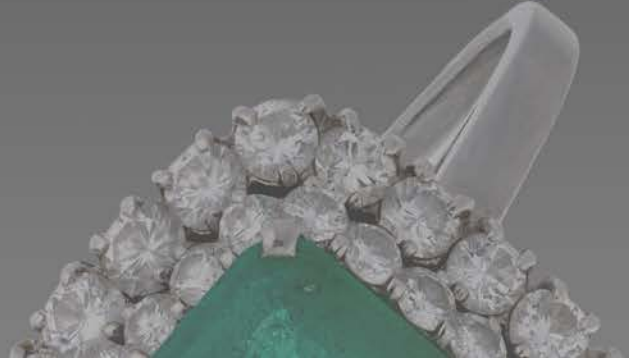


219

A COLOMBIAN EMERALD AND DIAMOND CLUSTER RING, BY **BVLGARI**, centred with a step-cut emerald in four claw mount, bordered by a double row of brilliant-cut diamonds, to a wirework setting, white precious metal mounted, the shank stamped 'BVLGARI', *the emerald weight approximately 2.1 carats, total diamond weight approximately 1.05 carats, ring size Q. £3,000-£4,000*



The ring is accompanied by a Report from GCS confirming the emerald is of Colombian origin with minor clarity enhancement, Report No 79227-98, dated 6.8.2019.



---

**220** A **SAPPHIRE AND DIAMOND RING**, the oval mixed-cut sapphire claw set between trios of small brilliant-cut diamonds, mounted in two colour 18ct gold, shank hallmarked, *ring size L*. £150-£200



---

**221** AN **18CT WHITE GOLD SAPPHIRE AND DIAMOND CLUSTER RING**, the flower head cluster centred with a round sapphire and bordered by brilliant-cut diamonds, to raised setting, fully hallmarked, *ring size M*. £300-£400



---

**222** A **SOLITAIRE STONE DIAMOND RING**, the old-cut brilliant in eight claw setting, to yellow precious metal shank, *diamond weight approximately 0.7 carats, ring size M*. £600-£800



---

**223** AN **18CT YELLOW GOLD SAPPHIRE AND DIAMOND CLUSTER RING**, the rectangular step-cut sapphire with canted corners collet set within a frilled surround of brilliant-cut diamonds, between scrolled trifurcated shoulders accented with further diamond accents, shank hallmarked, *ring size J½*. £300-£400





**A PAIR OF SAPPHIRE AND DIAMOND CLUSTER EARSTUDS**, each centred with an old-cut diamond, within a calibr  sapphire surround and old-cut diamond set border, on post fittings, signed 'Diafini', white precious metal mounted, stamped 750', diameter 15mm. £2,600-£3,000

**225** **A LATE VICTORIAN FIVE STONE DIAMOND RING**, gold and silver mounted, the five graduated old brilliant-cut diamonds with pairs of rose-cut diamond points between, to scrolled gallery, total diamond weight approximately 4.40 carats, ring size N½. £3,000-£4,000





**226** A PAIR OF ART DECO SAPPHIRE AND DIAMOND EARRINGS, the elongated pierced work lozenge drops set with graduated brilliant and rose-cut diamonds in floral designs, to baguette-cut sapphire borders, mounted in yellow and white precious metal, to hook fittings, *sapphires untested for origin*, length 61mm. **£1,500-£2,000**



**227** A PAIR OF ART DECO STYLE RUBY AND DIAMOND PENDANT EARRINGS, each with flared surmounts, and vertical row of brilliants below, suspending a diamond and calibre ruby set tear-shaped drop, with central brilliant-cut diamond, the settings millegrain edged, white precious metal mounted, on post fittings stamped 'Diafini', 750', length 4.6cm.  
£2,000-£2,600





**228** A MULTI GEM SET AND FRESHWATER CULTURED PEARL LONG NECKLACE AND EARRING SUITE, the long chain necklace of collet set round faceted ruby and pale green sapphire or chrysoberyl links, with large freshwater cultured pearls between, to central diamond set hoop and baton motif with further matching chain drop below, together with a pair of matching earring pendants, mounts stamped '18k', necklace length 73cm. **£1,500-£2,000**

---

**229** A SOLITAIRE DIAMOND RING, the brilliant-cut diamond in raised six claw setting, between slightly reeded shoulders, to 18ct white gold mount, the shank stamped '18ct' and '1.77' for the diamond carat weight, ring size O. £3,000-£5,000



---

**230** A THREE STONE DIAMOND RING, claw set with three brilliant-cut diamonds, two colour precious metal mounted, the shank stamped '18ct plat', total diamond weight approximately 1.80 carats, ring size O. £1,500-£2,000



231



A SOLITAIRE DIAMOND RING, the brilliant-cut diamond in raised six claw setting, white precious metal mounted, shank with maker's mark and stamped '18ct', and '1.55' for diamond weight, *ring size M*.

£2,000-£2,400

232

A BLUE ZIRCON AND DIAMOND RING, the round-cut blue zircon claw set between single-cut diamond set shoulders, mounted in white precious metal, stamped 'plat', *ring size N*.

£160-£200



233



A TRIPLE CLUSTER DIAMOND RING, composed of three flowerhead clusters of claw set brilliant-cut diamonds, mounted in white precious metal, stamped '585', *ring size P*.

£300-£400

**234** A DIAMOND SET LINE BRACELET, the articulated bracelet composed of claw set brilliant-cut diamond set links, mounted in white precious metal, hidden clasp stamped '14k', bracelet length 17.5cm, total diamond weight approximately 11.5-12 carats.  
£6,000-£8,000



- 
- 235** A SERPENT RING, formed as a spiral with textured finish, the head inset with emerald eyes, yellow precious metal unmarked, ring size H (leading edge). £100-£150



- 
- 236** A LION MASK RING, the bezel formed as a lion mask, the shank terminating in the tail, yellow precious metal, stamped '750' for 18ct, ring size L. £240-£340



- 
- 237** A ROARING DIAMOND SET LION MASK PENDANT, the lion head beneath a coronet, set with brilliant-cut diamonds, and ruby, emerald and sapphire highlight, its main with further diamond detail, and ruby set eye, the reverse with loop pendant fitting, the mounts still intact each side for a brooch fitting, (pin now removed) and with a later added hinged fitting (for a two row necklace), stamped 14k, length 3.5cm. £300-£400



# Ancient Jewellery and Antiquities





**238** A HELLENISTIC PERIOD SINGLE GOLD EARRING, CIRCA 3RD CENTURY BC, the hook earring with a classical female mask wearing a foliate head-dress to the front, the hoop supporting three beads, including amazonite and garnet, and further gold wirework detail, *length 30mm.* £400-£600





The following two lots are from a private collection of 16th - 18th century rings and other jewels, discovered in the dried-up riverbeds around Old Spanish Town in Jamaica by a relative of the vendor, who was a keen detectorist in the mid 20th century.

239



**A 16TH CENTURY EMERALD SINGLE STONE RING**, the square step-cut emerald and raised closed back collet setting, to triangular section shank, mounted in yellow gold, *ring size I*.  
£1,500-£2,000

240



**A 17TH-18TH CENTURY SINGLE EMERALD SET EARRING AND TWO ANTIQUE EMERALD SET JEWELS**, the first comprising scrolled open panel with crown surmount, displaying traces of white enamel, centred with a step-cut emerald and suspending one of two pear-shaped cabochon emerald drops below (one lacking), mounted in yellow gold, together an 18th century earring, the lozenge-shaped panel with engraved detail centred with a raised collet set square step-cut emerald, to broken hook fitting; and a 19th century pendant, set with a round cabochon emerald within textured surround, suspending a bell-shaped drop below, *first earring length 26mm*.  
£300-£400

**241** A 17TH CENTURY GOLD ARMORIAL SEAL RING, RELATING TO THE COL(E)MAN FAMILY, CIRCA 1640-80, the oval bezel bearing full armorial achievement of the family of **Colman/Coleman of Brent Eleigh**, Suffolk; the bezel with a uniform punched border, inscribed with the letter 'I' to the underside of the bezel, ring size Q½. £8,000-£12,000

This ring was found by a metal detector at Ducks Bay on the shores of Loch Lomond in Scotland and has been disclaimed under Scottish Treasure Trove.

The arms of the Colman family may be blazoned as follows:

**Arms:** *Azure upon a pale rayonny or a lion rampant gules*

**Crest:** *A caltrap or between two wings, argent*

This crest can be seen prominently displayed on the ledger slab of the tomb of Samuel Colman (1569-1653) in the parish church of St Mary, Brent Eleigh, Co. Suffolk and atop the Brent Eleigh village sign post.

The Colman family made their fortune in the mid 16th century from the cloth trade, in the Suffolk town of Lavenham. The family invested their wealth into land, and in 1607 Samuel Colman purchased the manors of Brent Eleigh and Fennhall, and the family rose to rank amongst the Suffolk gentry. Samuel's second son Thomas was a devout clergyman in the protestant faith in the village of Brent Eleigh; however Thomas's only son Edward became a convert to Catholicism and had a reputation as an effective proselytiser of his new faith, gaining a number of converts.

Edward also had high political ambitions for himself, which began in 1661 when he established himself at court, being sworn in as a 'Gentleman Pensioner', acting as a bodyguard to the King. By 1673 Edward had been appointed Secretary to fellow Catholic, Mary of Modena, wife of James, Duke of York, the younger brother and heir presumptive to the Protestant King Charles II. During the end of the 1670s James and Mary had been living in Edinburgh and in 1680 the King made James Commissioner for Scotland.

The 17th century remained a period of high tension between Protestants and Catholics, and Edward undertook approaches on behalf of the Duke of York (whether authorised or not) to both the Papacy and the Catholic French court, trying to gain support and funds to reduce James's reliance on the anti-Catholic parliament.

In September 1678, Titus Oates made fanciful claims of a 'Popish Plot', accusing nearly 500 Jesuits of involvement in plots to assassinate the King; one of those accused being Edward Colman. As the claims were fabricated, no direct evidence of plans for regicide could be found, however searches of Edward Colman's correspondence with the French Jesuit, Fr. Ferrier, confessor to Louis XIV, detailed fanciful schemes of obtaining the dissolution of the current Parliament, in the hope of replacing it with a new pro-French (and therefore pro-Catholic) one. In the wake of these revelations Edward was found guilty of treason and in November 1678 was hung, drawn and quartered. Now considered to be a Catholic martyr, Edward Colman was beatified by Pope Pius XI in 1929.



242



A 17TH CENTURY MEMORIAL RING, the band ring with a memento mori skull motif engraved to the front, the interior of the band inscribed 'I.B. Obit 21 March 1663', and bearing maker's mark of two capital Rs conjoined back to back and upside down in rectangular punch, *ring size L*.

£300-£400

For a posy ring with similar maker's mark see the Portable Antiquities Scheme, ref: DOR-A3C17D.

243

AN ANTIQUE EMERALD SET CHILD SIZE ETERNITY BAND, 17TH-18TH CENTURY, the small band composed of cabochon emeralds in closed back collet settings, mounted in yellow gold, *ring size D*.

£200-£300



# Objects of Vertu



## Objects of Vertu

244



A VICTORIAN DAGUERRETYPE, BY KILBURN OF REGENT STREET, CIRCA 1860s, of a elegant lady of the period, contained in folding Moroccan leather case, the cover with gilt blind stamp, and another ambrotype of a young girl, circa 1870s, in travelling case with clasp, first length 7cm, second 7.3cm. £80-£100

245



A 19TH CENTURY PAPAL RING, ITALIAN, CIRCA 1830, the large ring with square bezel mounted with a hinged iron panel revealing a velvet lined compartment, the panel engraved with the arms of *Alessandro Farnese, Pope Paul III* (papal reign 1534-1549), the broad tapering shoulders and sides decorated with oval 'cameos' of saints, with a lion to either side, together with a gilt metal oval glazed reliquary theca of *St John the Baptist*, enclosing paper cedula, the original red wax seal attached, ring height 53mm, reliquary theca dimensions 33 x 26.5mm. £100-200



**THREE UNMOUNTED GLASS CAMEO SULPHIDES**, of classical scenes, an unmounted oval 'Tassie' of a classical athlete, a mounted oval glass cameo of a classical muse; a mounted oval purple glass cameo of the head of Laocoön (after the antique); a 19th century glass and white metal mounted fouled anchor brooch (lacking pin), *sulphides lengths 20.5mm, 22mm, 18mm, 'Tassie' length 30mm, glass cameo 34mm, purple cameo 35mm.* **£100-200**

See: Paul Jokelson: Sulphides; The Art of Cameo Incrustation, New York 1968

The statue of Laocoön and His Sons, the Laocoön Group, was excavated in Rome in 1506, and is on display in the Vatican Museum.



**A COLLECTION OF UNMOUNTED SEALS**, comprising two intaglio cypher seals, of cornelian and bloodstone, each with monogram and crests; an oval glass intaglio of an Emperor in profile; an oval blue hardstone intaglio of a goddess, (possibly Aphrodite) with Cupid in attendance; an oval black basalt intaglio depicting an Empress in profile; a carved coral cameo depicting Mars, two further small cameos and a green glass oval panel, with drill holes to each side, *first length 20mm.* (9) **£100-200**

Please note coral is covered by CITES legislation and may be subject to import/export and trade restrictions.



**THREE CHINESE SILVER CARD CASES**, the first of rectangular form with pull off cover, embossed to the front and back with a writhing dragon, makers mark probably for **Kwan Hing** (of Canton & Hong Kong circa 1880-1920); the second a card case with slanted hinged lid, makers mark possibly WN, decorated to the front with a dragon and a third, with embossed cartouche to the front depicting a pair of dragons chasing the flaming pearl, case unmarked, *first dimensions 8.4 x 4.6mm, second 4.8 x 8.8mm, and third 9.4 x 6.2mm.* £200-£300



**A LATE 19TH CENTURY SILVER HEART-SHAPED PERFUME BOTTLE HOLDER**, the hinged cased opening to the side, and embossed each side with ribbon bow and scrolling foliage around a central vacant cartouche, with hinged domed lid, by Henry Matthews, Birmingham, 1898, enclosing a green glass scent bottle and stopper, *case length 8.3cm, glass bottle including stopper 7.3cm.* £140-£200



**TWO SILVER MUSTARDS**, of cylindrical form, the first with domed cover, reeded thumbpiece, beaded borders and later embossed floral and foliate decoration, by maker Crispin Fuller, London 1793; the second with gadrooned rims and reeded thumbpiece, by William Hutton & Sons, London 1893, both with blue glass liners, plus a Dutch silver mustard spoon, *first height 9.7cm, second 6.5cm.* £80-£100



- 251** A SILVER PURSE, of shaped hinged form with engraved floral decoration, maker's mark for Henry Clifford Davis, hallmarked for Birmingham 1915, with chain carrying handle, in fitted case, purse width 12.5cm.  
£80-£100



- 252** A CONTINENTAL COMPACT/LIPSTICK HOLDER, IN THE FORM OF A HAND MIRROR, the front inset with a mirror, hinged to the top and opening to reveal a powder compartment, the reverse with engraved scrolling flowers and foliage, to similarly engraved handle, inset with pull-out lipstick holder, with *corallium Rubrum* coral thumbpiece, stamped '800' to the inside rim of compact, length 14.8cm.  
£100-£200



Please note coral is covered by CITES legislation and may be subject to import/export and trade restrictions.

- 253** AN EARLY 20TH CENTURY OVAL SILVER JEWELLERY BOX, the hinged lid engraved with ribband bows, festoons and baskets of flowers, with pink silk lining, raised on cabriole legs, hallmarked for Birmingham, 1915, and bearing indistinct maker's mark, length 14.5cm.  
£60-£80



**254** A LARGE PIECE OF AMBER, the irregular amber bead suspended by a leather cord, amber untested for treatments and origin, measures approximately 90 x 68 x 42mm. £100-£200



**255**



**OF SPORTING INTEREST: A 19TH CENTURY FOB SEAL**, the carnelian seal bearing intaglio initials in gothic script, the gold mount chased with detail of a hound chasing two pheasants through foliage, the surmount modelled as a seated spaniel, to scroll engraved borders and suspensory loop, length including suspensory loop 32mm. £150-£200

**256**



**A 9CT GOLD COIN PURSE**, the mesh-link purse with four bead drops below, the snap clasp bearing UK import marks for 9ct gold and marker's mark 'PE', length 7.5gm. £200-£300

- 
- 257** A 19<sup>TH</sup> CENTURY THIMBLE, in two colour gold, unmarked and untested, with applied black eschutcheon detail, in a Victorian Mauchline clan McLean tartan-ware egg-shaped wooden case, stamped 'McLean', thimble height 26mm. £150-£200



- 
- 258** A SILVER GILT EGG, BY STUART DEVLIN, the two section egg with textured finish and polished girdle, bearing maker's mark and London hallmarks for 1971, height 7.2cm. £100-£200



259



**A 19TH CENTURY SILVER AND AGATE SNUFF BOX**, the oblong box with rounded sides, the top with hinged cover, engraved with C-scrolls and foliate and centred with an oval agate panel, the sides similarly inset with two further agate panels, and with later decorated swags of flowering foliage, the base engraved with crest, and motto "*Fortis in arduis*", unmarked, length 5.5cm. **£80-£100**

*"Fortis in arduis"* translates from the Latin as "*Strength in difficulties*".

260

**A VICTORIAN SILVER HUNTING HORN VINAIGRETTE/PERFUME FLASK**, by **SAMPSON MORDAN & Co**, the horn with hinged cover engraved with a Baron's coronet, above the name 'MINNIE', opening to reveal a pierced silver gilt grill, the opposing end with twist off cap, the inside cover engraved with a lozenge Registry mark, stamped maker's mark, and signed 'S Mordan & Co London', hallmarked for London, 1871, with chain attachment, length 11cm. **£140-£180**

The lozenge Registry mark gives the date of registration as 21st June 1870.



261



**A VICTORIAN SILVER TABLE VESTA CASE**, of engine turned finish, the hinged lid with central crest in circular reserve, the compartmented interior incorporating a candle, on hinged platform, with strike, and enclosing original vestas, hallmarked for 'J.I', London 1851, in original fitted case, the silk signed 'P & F Scheffer, 27 Piccadilly London', the case cover engraved with presentation initials, length 7cm, height 2.2cm. **£600-£800**



**AN ART DECO ONYX, JADE AND DIAMOND ROUGE POT, BY BOUCHERON**, of polished rounded octagonal onyx form, the hidden circular lid centred with a carved jade flowerhead, within a millegained rose-cut diamond set surround, the lid released by a button to the underside, the inner gold rim signed 'Boucheron - Paris' and bearing French eagle's head assay mark, with mirror to inside of lid, *width 48mm*. £500-£700



**AN EDWARDIAN SILVER BOUDOIR RING BOX IN THE SHAPE OF A COAL SCUTTLE**, with carrying handle, the hinged lid incorporating a circular timepiece, the white enamel dial with Roman numerals and blued steel hands, by Douglas Clock Company, Birmingham, 1901, *height 7cm*. £260-£300



**A COMMEMORATIVE SILVER VESTA CASE OF JOSEPH CHAMBERLAIN**, modelled as the head of the statesman, his hair swept back and wearing a monocle, the strike hinged to the base, and stamped to the underside: 'IMSA CONVENTION LONDON 2000', hallmarked for Jenkins William Evans, Birmingham, with the millennium hallmark for 2000, *height 4.8cm.*

**£500-£700**

The commemorative match safe (or vesta) was especially made for the International Match Safe Association by J. W. Evans & Sons Ltd, from their original dies, to commemorate the 3rd Annual Convention held in London in September 2000.

A total of two 18ct gold and 34 sterling silver vestas were manufactured. Jenkins William Evans was a die-sinker who established his business in 1880 at 54 Albion Street, Birmingham.

The company is still in existence and remains family owned. It retains the original dies for around thirty pocket match holders. Jenkins William Evans registered the design which included the head of the Hon. Joseph Chamberlain, as No. 96937 on 28th March 1888.

**Joseph Chamberlain** (1836-1914), was the son of a shoe manufacturer in London, and entered the family business at the age of 16. Two years later he moved to Birmingham to join his cousin's screw-making business, where his energy and organisational skills eclipsed that of his competitors and by the age of 38 he was able to retire with a substantial fortune.

In 1873 he was elected Mayor of Birmingham, and in 1876 elected as the Liberal member of parliament for Birmingham. In 1882, he was appointed as President of the Board of Trade in Gladstone's Liberal government. He moved his political allegiance to the Conservatives, becoming Secretary of State for the Colonies in Lord Salisbury's government. After his death, his two sons followed him into politics, with his youngest Neville becoming Prime Minister in May 1937.

# Watches



# Watches

265



**A LADY'S TANK DIVAN WRISTWATCH, BY CARTIER,** the signed cream rectangular dial with black Roman numerals, with secret signature in numeral 10, quartz movement, in signed stainless steel case, numbered '195441CE 2599', to a replaced black leather strap, with signed Cartier buckle, accompanied by Cartier case, certificate and papers, dial measures 24 x 13mm. £600-£800

The certificate confirms the watch was purchased from a Cartier retailer on 08.06.2004.

266

**A LADY'S BRUSHED STAINLESS STEEL QUARTZ SANTOS WRISTWATCH, BY CARTIER,** the signed white dial with black Roman numerals, blued steel hands, and secret signature to numeral VII, the bezel with eight screw head detail, reverse numbered '8192408867' to deployant clasp, with Certificate confirming watch was purchased from Cartier, 175-176 New Bond Street, London on 16 March 1987. £200-£300





---

**267** A LADY'S 9CT GOLD WRISTWATCH, the octagonal silvered dial with radiating guilloché decoration, black Arabic numerals, blued steel hands on expanding bracelet strap, hallmarks for London, 1921, case numbered '97864', diameter 26mm. £80-£100



---

**268** A LADY'S 18CT GOLD WRISTWATCH, BY PIAGET, the signed circular white enamel dial with black Roman numerals, the case signed and with European convention mark, quartz movement, on black leather strap, buckle signed, stamped '750', dial 22mm. £400-£600



---

**269** A GENTLEMAN'S STEEL AND GILT DE VILLE WRISTWATCH, BY OMEGA, the signed white enamel dial with black Roman numerals, signed quartz movement, case steel case signed, with gilt bezel, to a stainless steel and gilt brick-link bracelet strap, with signed clasp, dial diameter 28mm. £150-£200





**270** A LADY'S DIAMOND SET COCKTAIL WATCH, BY HAMILTON, the signed white circular dial with spot hour markers and Arabic numerals, signed jewelled movement, the case stamped '14k gold' and numbered 'SD22890', the bezel set with single-cut diamonds, to graduated brilliant-cut diamond cluster shoulders, the later bracelet strap composed of box-links each set with a single-cut diamond, *wristwatch length 17cm.* £300-£500



**271** AN ART DECO DIAMOND SET COCKTAIL WATCH, the circular silvered dial with black Arabic numerals, jewelled movement, the case stamped 'all plat', 'J573 G6734' and 'H Ltd', the bezel and circular hoop shoulders set throughout with single-cut diamonds and accented with baguette-cut diamonds, to a later mesh-link bracelet strap, *wristwatch length 17cm.* £400-£600

**272** AN ONYX AND DIAMOND SET COCKTAIL WATCH, 1920s, the small silvered tonneau-shaped dial with black Arabic numerals, unsigned jewelled movement, case stamped platinum, with a oval bezel and hinged shaped panel shoulders, millegrain set throughout with single-cut diamond and accented with cabochon triangular and rectangular-shaped onyx, to a later narrow black leatherette strap, *wristwatch head length, including shoulders, 42mm.* £300-£500



- 
- 273** A DIAMOND COCKTAIL WATCH, BY LONGINES, the signed oval white dial with baton and Arabic numerals, with textured bezel and diamond set foliate shoulders, to a diamond set brick-link bracelet strap, white precious metal stamped 14k, length 16cm. £100-£150



- 
- 274** A 1970s WRISTWATCH/BRACELET, BY OMEGA, the concealed signed round dial with baton numerals, beneath a hinged cover of angular textured linear design, with highlights of rows of diamonds, the integral slightly tapered bracelet strap of textured brick links, clasp stamped '18ct', with safety chain, bracelet length 17.5cm. £1,200-£1,500





**TWO 19TH CENTURY SILVER CASED VERGE POCKET WATCHES**, the first pair-cased, with white enamel dial with black Roman numerals, and gilt poker hands, the movement signed for Richard Cole, Ipswich, numbered 627(?) (last number indistinct), inner and outer cases both hallmarked for London, 1812, with steel Albert chain, T-bar and metal mounted fob seal; the second (lacking outer case). the white enamel dial with black Arabic numerals, gilt hands, the movement signed 'B. Rowe London' and numbered '10734', case hallmarked for London, 1821, *first diameter 53mm, second 46mm.*

£100-£150



**FOUR SILVER CASED POCKET WATCHES**, the first a hunter pocket watch by G F Hurst, Commercial Road, London, No 6465, hallmarked for London 1863; the second, a hunter with silver dial, and gilt Roman numerals, unsigned, No 2607, case hallmarked for London 1861, with steel Albert chain, steel fob and key; the third, an open face example, the white enamel dial signed 'John Bennett, London', movement signed, No 58584, the case hallmarked for London 1874 and the fourth, a Swiss open face example signed 'E Girardon, Geneve', *dimensions 48mm, second 45mm, third 48mm, fourth 45mm.*

£100-£150



**AN 18TH CENTURY SILVER AND TORTOISESHELL CASED POCKET WATCH, BY PETER WISE, LONDON**, the dial with black Roman numerals, to black outer minute divisions in outer Arabic numerals 1-60, with steel beetle and poker hands, the verge movement signed 'Peter Wise, London', and numbered '450', with pierced and engraved balance cock, the fusee verge movement with flared pillars, the outer case of tortoiseshell with pique stud detail, the reverse with swivel cover to the winding hole (some damage to the tortoiseshell), diameter 55mm. £200-£300

Please note tortoiseshell is covered by CITES legislation and may be subject to import/export and trade restrictions.

278

**A SILVER OPEN FACE KEYLESS WIND LEVER POCKET WATCH, BY J W BENSON**, the signed white enamel dial with black Roman numerals, seconds subsidiary dial at numeral 6, gilt hands, the three-quarter plate signed by the maker and engraved 'The Bank Watch Best London Make No 11190', case hallmarked for London, 1904, cuvette inscribed 'G.D. Morgan 1904', diameter 48mm. £60-£80



279



**A GEORGE III GOLD CASED VERGE HUNTER POCKET WATCH, BY G M FIELD, LONDON**, the white enamel dial with black Roman numerals and gilt hands, the fusee movement signed 'G M Field London' and numbered '7736', with pierced engraved balance cock and plain cylindrical columns, the case hallmarked for London, 1796, with maker's mark possibly 'LM', (first letter indistinct), the front cover engraved with crest of rampant lion beneath motto 'PROMPTUS' and monogram below, (pin of internal hinge missing), diameter of watch case 54mm. £260-£360



**A HUNTER POCKET WATCH, BY LONGINES**, the signed white enamel dial with black Arabic numerals and subsidiary seconds dial, the jewelled movement signed and numbered '1924353', the plain case with faceted style band, similarly numbered, signed and stamped '585', with signed cuvette, *diameter 52.5mm*. £500-£600



**AN OPEN FACED POCKET WATCH**, the golden-silvered dial with black Arabic numerals and subsidiary seconds dial, the jewelled movement signed 'Eterna' and numbered '2968992', the case with foliate wreath borders, stamped '14k', (crown loose), *diameter 45mm*. £500-£700



**A 9CT GOLD POCKET WATCH, BY PIAGET**, the signed gilt dial with blued steel hands, without outer glazed border with gilt Arabic numerals, the reverse with glazed skeleton back, on with short chain section, stamped '9ct', suspending a 9ct gold engine-turned cigar piercer, *watch diameter 40mm*. £300-£500

End of Sale

## INDEX of MAKERS

John <b>Bennett</b> .....	Lot 276
J W <b>Benson</b> .....	Lot 278
<b>Boucheron</b> .....	Lot 262
<b>Bucherer</b> .....	Lot 33
<b>Bulgari</b> .....	Lot 219
<b>Cartier</b> .....	Lots 36, 140, 141, 142, 152, 265, and 266
Richard <b>Cole</b> .....	Lot 275
<b>Deakin &amp; Francis</b> .....	Lot 27
Stuart <b>Devlin</b> .....	Lot 258
<b>Diafini</b> .....	Lot 188, 224, and 227
John <b>Donald</b> .....	Lot 156, 157 and 158
<b>Douglas Clock Company</b> .....	Lot 263
<b>Eterna</b> .....	Lot 281
G M <b>Field</b> .....	Lot 279
Gerda <b>Flöckinger</b> .....	Lot 160
N E <b>From</b> .....	Lots 90, 91, and 92
Crispin <b>Fuller</b> .....	Lot 250
E <b>Girardon</b> .....	Lot 276
Andrew <b>Grima</b> .....	Lots 170, 171, and 172
<b>Hamilton</b> .....	Lot 270
Kwan <b>Hing</b> .....	Lot 248
G F <b>Hurst</b> .....	Lot 276
William <b>Hutton</b> & Sons .....	Lot 250
William Evan <b>Jenkins</b> .....	Lot 264
<b>Kordes &amp; Litchtenfels</b> .....	Lot 90
<b>Lalique</b> .....	Lots 93, 94
<b>Longines</b> .....	Lots 273 and 280
<b>Omega</b> .....	Lots 269 and 274
Louis <b>Osman</b> .....	Lot 183
<b>Piaget</b> .....	Lot 268 and 282
Paul <b>Preston</b> .....	Lots 125, 126, 127, and 128
B <b>Rowe</b> .....	Lot 275
<b>Sampson Mordan &amp; Co</b> .....	Lot 260
Henry <b>Silberfeld</b> .....	Lot 134
<b>Tiffany &amp; Co</b> .....	Lot 22
Ed <b>Wiener</b> .....	Lot 159
Peter <b>Wise</b> .....	Lot 277



# DIAMONDS

Diamonds are assessed according to the four Cs:

## Carat weight

1 carat equals 0.2 grams.

## Cut

The quality of a cut is assessed in terms of its proportions, symmetry and polish.

## Colour

Unless regarded as a 'fancy' coloured diamonds, all diamonds are graded on their lack of colour. The gradings runs as follows:

GIA	CIBJO	Traditional
D	Exceptional White + (EW+)	Finest White
E	Exceptional White (EW)	Finest White
F	Rare White + (RW+)	Fine White
G	Rare White (RW)	Fine White
H	White (W)	White
I	Slightly Tinted White (STW)	Commercial White
J	Slightly Tinted White (STW)	Top Silver Cape
K	Tinted White (TW)	Top Silver Cape
L	Tinted White (TW)	Silver Cape
M-Z	Tinted Colour (TC)	Cape
Fancy	Fancy Colour	

## Clarity

Diamonds are graded on their freedom from inclusions (within the stone) and blemishes (found on the surface of the stone). They are assessed using 10x magnification, and are graded as follows:

GIA	CIBJO	Description
Flawless (FL)	Loupe Clean (LC)	Shows no inclusions or blemishes
Internally Flawless (IF)	Loupe Clean (LC)	Shows no inclusions and only insignificant blemishes
Very Very Slightly Included (VVS1/2)	Very Very Slightly Included (VVS1-2)	Contains minute inclusions which are very difficult for an experienced grader to see with 10x magnification
Very Slightly Included (VS1-2)	Very Slightly Included (VS1-2)	Contains very small inclusions that are difficult to see with 10x magnification
Slightly Included (SI1-2)	Slightly Included (SI1-2)	Contains inclusions that are easily visible with 10x magnification
Imperfect/Included (I1-3)	Pique (P1-3)	Contains inclusions that are obvious with 10x magnification and can often be seen with the naked eye; durability may be affected

Please note the four Cs of a diamond cannot be fully assessed whilst the stone is mounted. The approximate gradings provided in the condition reports are estimations, made by the specialists whilst the stones were mounted and are for guidance only. If a stone has been unmounted and assessed in a gemmological laboratory, this will be noted in the cataloguing/condition report.





*We are currently accepting entries for our forthcoming*

## **Jewellery, Watches, Antiquities and Objects of Vertu Sale**

*to be held on*

**Tuesday 26th November at 1pm**

Closing date for entries 11th October

All enquiries please contact  
Frances Noble or Laura Smith  
on 020 7016 1700 or email  
[jewellery@dnw.co.uk](mailto:jewellery@dnw.co.uk)

*A hardstone cameo pendant  
depicting an African warrior,  
sold at DNW for £9,600 in June 2019.*



**London Specialist Auctioneers**  
Jewellery Medals Coins Banknotes





### Commission Form – Jewellery 10 September 2019

Please bid on my behalf at the above sale for the following Lot(s) up to the price(s) mentioned below. These bids are to be executed as cheaply as is permitted by other bids or any reserve. I understand that in the case of a successful bid, a premium of 24 per cent (plus VAT if resident in, or posted to within, the European Union) will be payable by me on the hammer price of all lots.

**Please ensure your bids comply with the steps outlined below:-**

- Up to £100 by £5
- £100 to £200 by £10
- £200 to £500 by £20
- £500 to £1,000 by £50
- £1,000 to £2,000 by £100
- £2,000 to £5,000 by £200
- £5,000 to £10,000 by £500
- £10,000 to £20,000 by £1,000
- £20,000 to £50,000 by £2,000
- £50,000 to £100,000 by £5,000
- Over £100,000 by £10,000

Bids of unusual amounts **will be rounded down** to the bid step below and will **not** take precedence over a similar bid unless received first. All absentee bids will be executed in the name of 'Wood'.

**NOTE:** All bids placed other than via our website should be received by 16:00 on the day prior to the sale. Although we will endeavour to execute any late bids, DNW cannot accept responsibility for bids received after that time. It is strongly advised that you use our online **Advance Bidding Facility**. If you have a valid email address bids may be entered, and amended or cancelled, online at [www.dnw.co.uk](http://www.dnw.co.uk) right up until a lot is offered. You will receive a confirmatory email for all bids and amendments. Bids posted or faxed to our office using this form will now be entered by our staff into the system using exactly this facility to which our clients now have access. **There is, therefore, no better way of ensuring the accuracy of your advance bids than to place them yourself online.**

I confirm that I have read and agree to abide by the Terms and Conditions of Sale printed in the catalogue.

Signed \_\_\_\_\_

Name (Block Capitals) \_\_\_\_\_ Client Code \_\_\_\_\_

Address \_\_\_\_\_

Tel: \_\_\_\_\_ E-mail \_\_\_\_\_

If successful, I wish to pay for my purchases by (please indicate):

- Cash     
  Cheque     
  Credit/Debit Card (see below)     
  Bank Transfer  
 Other (please give details) \_\_\_\_\_

#### All payments to be made in pounds sterling.

If successful, I wish to pay for my purchases by (please indicate):

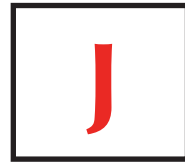
- Master Card   
  Visa   
  Amex   
  Debit card   
 Issue No

Name (as shown on card) \_\_\_\_\_

Card no. \_\_\_\_\_ Start Date  /  Expiry Date  /

Your bids may be placed overleaf

## Commission Form – Jewellery 10 September 2019



You may specify a “plus one” bid if you wish, so that in the event that the bidding is against you when your maximum bid is reached this will increase your bid to the next increment. Write “+1” next to your bid.

Lot No	£ Bid	Lot No	£ Bid	Lot No	£ Bid

**Saleroom Notices**  
 Any Saleroom Notices relevant to this auction are automatically posted on the Lot Description pages on the our website. Prospective buyers are strongly advised to consult the site for updates.

**Successful Bids**

Should you be a successful bidder you will receive an invoice detailing your purchases. All purchases are sent by registered post unless otherwise instructed, for which a minimum charge of £12.00 (plus VAT if resident in the European Union) will be added to your invoice.

**All payments for purchases must be made in pounds sterling. Please check your bids carefully and complete the payment instructions overleaf.**

**Prices Realised**

The hammer prices bid at the auction are posted on the Internet at [www.dnw.co.uk](http://www.dnw.co.uk) in real time. A full list of prices realised appear on our website as the auction progresses. Telephone enquiries are welcome from 09:00 the following day.

# Important Information for Buyers

## Absentee Bids

It is recommended that absentee bids are placed using our online advance bidding facility, which is available on our website at [www.dnw.co.uk](http://www.dnw.co.uk). Bids placed in this way cannot be seen by others and do not go live until the actual moment that the lot in question is being offered for sale. All bids can be easily altered or cancelled by the bidder prior to this point. An automated email will be sent confirming all bids and alterations.

A valid email address is required to bid online.

There is no additional charge for online bidding and it is not necessary to pre-register a payment card in order to do so.

Whilst we are still happy to execute all bids submitted in writing or by phone, fax, etc., it should be noted that bids left with us will be entered at our offices using the same bidding facility to which all our clients have access. There is, therefore, no better way of ensuring the accuracy of your bids than to execute them yourself online.

**Whilst online bids can be placed up until the moment a lot is offered for sale, all other bids made to the office must be confirmed in writing, by fax or e-mail and should be received by 16:00 on the day prior to the sale. Although we will endeavour to execute late bids, Dix Noonan Webb Ltd cannot accept responsibility for any bids received later than this.**

If a bidder is unable to attend an auction or to bid live on the internet and wishes to book a **telephone bid** with DNW, **they must contact DNW by 16:00 on the day prior to the sale** to make arrangements to bid thus. **DNW cannot be held responsible in the event of connectivity issues, resulting in failure for the buyer to be able to bid.**

## Commission Form

Further advice to bidders and purchasers may be found on the commission form included with this catalogue. Please use this form when sending bids to us by post or fax.

## Buyers' Premium

**A buyers' premium of 24% on the hammer price** (plus VAT if resident in, or lots are delivered within, the European Union) **is payable by the buyer on all lots.**

## Pre-sale Estimates

The pre-sale estimates are intended as a guide for prospective purchasers. Any bid between the listed figures would, in our opinion, offer a fair chance of success. However all lots, depending on the degree of competition, can realise prices either above or below the listed estimates.

## New Clients

New clients must register online to bid (whether in person or in absentia) and any such registrations will only be accepted once due diligence has been completed to the satisfaction of Dix Noonan Webb.

Registration requests, together with auction house references and identification/proof of address as requested should be submitted as early as possible and certainly not later than one business day before the auction.

Whilst every endeavour is made to complete the registration process as quickly as possible, Dix Noonan Webb cannot be held responsible if it is not completed in time for a bid to be placed.

Dix Noonan Webb reserve the right to refuse any registration without explanation.

## Methods of Payment

**All payments must be made in pounds sterling within five days of the end of a sale unless credit terms have been made by prior arrangement.**

The best way to make payment is by Visa or MasterCard credit or debit cards via our website [www.dnw.co.uk](http://www.dnw.co.uk). Carriage and insurance is pre-calculated for you so that you may pay immediately.

Payment may also be made by bank transfer to DNW's account at:

Lloyds

Piccadilly London Branch

39 Piccadilly

London W1J 0AA

Sort Code: 30-96-64

Account No: 00622865

Swift Code: LOYDGB2L

IBAN: GB70LOYD30966400622865

BIC: LOYDGB21085

Please include your surname, client code and auction date with the instructions to the bank. Alternative methods of payment which may enable immediate clearance of purchases include cash, recognised banker's drafts, credit cards (Master Card, Visa and Amex) and debit cards. Although personal and company cheques are accepted, buyers are advised that property will not be released until such cheques have fully cleared and cannot be subject to recall, which may take two weeks. Third party payment is not accepted except by prior arrangement. Cardholder not present transactions will only be accepted when successfully completed through our online payment platform. Clients may be required to pay by bank transfer for their first purchase or at other times at sole discretion of Dix Noonan Webb.

**Please note that we will not accept cash payments in excess of £5,000 (five thousand pounds) in settlement for purchases made at any one auction.**

Purchases will be despatched as soon as possible upon full payment in pounds sterling for the lots you have bought. Carriage will be at the buyer's expense. Estimates and advice on all methods of despatch can be provided upon request.

Loss and damage warranty cover at the rate of 1.5% will be arranged unless otherwise specified and will be added to the carriage charge for non-UK deliveries.

Goods can only be shipped to the address provided to and verified by Dix Noonan Webb at the time of registration.

## Change of Address

Change of address requests will be subject to the same due diligence by Dix Noonan Webb as at the time of registration.

## Artists' Resale Rights (Droit de Suite)

Droit de Suite is a royalty payable to a qualifying artist or their estate every time the artist's work is sold at auction or by an art market professional during the artist's lifetime and for a period of up to 70 years following the artist's death.

Royalties are calculated on a sliding percentage scale based on the hammer price.

Lots subject to this royalty payment are marked with **ARR** in the catalogue.

# Conditions of Business

## Conditions mainly concerning Buyers

### 1 The buyer

The highest bidder shall be the buyer at the 'hammer price' and any dispute shall be settled at the auctioneer's absolute discretion. Every bidder shall be deemed to act as principal unless there is in force a written acknowledgement by Dix Noonan Webb Ltd ("DNW") that he acts as agent on behalf of a named principal. Bids will be executed in the order that they are received.

### 2 Minimum increment

The auctioneer shall have the right to refuse any bid which does not conform to Dix Noonan Webb's published bidding increments which may be found at [dnw.co.uk](http://dnw.co.uk) and in the bidding form included with the auction catalogue.

### 3 The premium

The buyer shall pay to DNW a premium on the 'hammer price' in accordance with the percentages set out above and agrees that DNW, when acting as agent for the seller, may also receive commission from the seller in accordance with Condition 15.

### 4 Value Added Tax (VAT)

The buyers' premium is subject to the current rate of Value Added Tax if the lot is delivered to the purchaser within the European Union.

**Lots marked 'x' are subject to importation duty of 5% on the hammer price unless re-exported outside the EU.**

The provision of a VAT form C88 is subject to the discretion of DNW and will be subject to an administration fee of £50.

### 5 Payment

When a lot is sold the buyer shall:

(a) confirm to DNW his or her name and address and, if so requested, give proof of identity; and

(b) pay to DNW the 'total amount due' in pounds sterling within five working days of the end of the sale (unless credit terms have been agreed with Dix Noonan Webb before the auction). Please note that, as stated above, we will not accept cash payments in excess of £5,000 (five thousand pounds) in settlement for purchases made at any one auction.

6 DNW may, at its absolute discretion, agree credit terms with the buyer before an auction under which the buyer will be entitled to take possession of lots purchased up to an agreed amount in value in advance of payment by a determined future date of the 'total amount due'.

7 Any payments by a buyer to DNW may be applied by DNW towards any sums owing from that buyer to DNW on any account whatever, without regard to any directions of the buyer, his or her agent, whether expressed or implied.

### 8 Collection of purchases

The ownership of the lot(s) purchased shall not pass to the buyer until he or she has made payment in full to DNW of the 'total amount due' in pounds sterling.

9 (a) The buyer shall at his or her own expense take away the lot(s) purchased not later than 5 working days after the day of the auction but (unless credit terms have been agreed in accordance with Condition 7) not before payment to DNW of the 'total amount due'.

(b) The buyer shall be responsible for any removal, storage and insurance charges on any lot not taken away within 5 working days after the day of the auction.

(c) The packing and handling of purchased lots by DNW staff is undertaken solely as a courtesy to clients and, in the case of fragile articles, will be undertaken only at DNW's discretion. In no event will DNW be liable for damage to glass or frames, regardless of the cause. Bulky lots or sharp implements, etc., may not be suitable for in-house shipping.

### 10 Buyers' responsibilities for lots purchased

The buyer will be responsible for loss or damage to lots purchased from the time of collection or the expiry of 5 working days after the day of the auction, whichever is the sooner. Neither DNW nor its servants or agents shall thereafter be responsible for any loss or damage of any kind, whether caused by negligence or otherwise, while any lot is in its custody or under its control.

Loss and damage warranty cover at the rate of 1.5% will be applied to any lots despatched by DNW to destinations outside the UK, unless specifically instructed otherwise by the consignee.

### 11 Remedies for non-payment or failure to collect purchase

If any lot is not paid for in full and taken away in accordance with Conditions 6 and 10, or if there is any other breach of either of those Conditions, DNW as agent of the seller shall, at its absolute discretion and without prejudice to any other rights it may have, be entitled to exercise one or more of the following rights and remedies:

(a) to proceed against the buyer for damages for breach of contract.

(b) to rescind the sale of that or any other lots sold to the defaulting buyer at the same or any other auction.

(c) to re-sell the lot or cause it to be re-sold by public auction or private sale and the defaulting buyer shall pay to DNW any resulting deficiency in the 'total amount due' (after deduction of any part payment and addition of re-sale costs) and any surplus shall belong to the seller.

(d) to remove, store and insure the lot at the expense of the defaulting buyer and, in the case of storage, either at DNW's premises or elsewhere.

(e) to charge interest at a rate not exceeding 2 percent per month on the 'total amount due' to the extent it remains unpaid for more than 5 working days after the day of the auction.

(f) to retain that or any other lot sold to the same buyer at the sale or any other auction and release it only after payment of the 'total amount due'.

(g) to reject or ignore any bids made by or on behalf of the defaulting buyer at any future auctions or obtaining a deposit before accepting any bids in future.

(h) to apply any proceeds of sale then due or at any time thereafter becoming due to the defaulting buyer towards settlement of the 'total amount due' and to exercise a lien on any property of the defaulting buyer which is in DNW's possession for any purpose.

### 12 Liability of Dix Noonan Webb and sellers

(a) Goods auctioned are usually of some age. All goods are sold with all faults and imperfections and errors of description. Illustrations in catalogues are for identification only. Buyers should satisfy themselves prior to the sale as to the condition of each lot and should exercise and rely on their own judgement as to whether the lot accords with its description. Subject to the obligations accepted by DNW under this Condition, none of the seller, DNW, its servants or agents is responsible for errors of descriptions or for the genuineness or authenticity of any lot. No warranty whatever is given by DNW, its servants or agents, or any seller to any buyer in respect of any lot and any express or implied conditions or warranties are hereby excluded.

(b) Any lot which proves to be a 'deliberate forgery' may be returned by the buyer to DNW within 15 days of the date of the auction in the same condition in which it was at the time of the auction, accompanied by a statement of defects, the number of the lot, and the date of the auction at which it was purchased. If DNW is satisfied that the item is a 'deliberate forgery' and that the buyer has and is able to transfer a good and marketable title to the lot free from any third party claims, the sale will be set aside and any amount paid in respect of the lot will be refunded, provided that the buyer shall have no rights under this Condition if:

(i) the description in the catalogue at the date of the sale was in accordance with the then generally accepted opinion of scholars and experts or fairly indicated that there was a conflict of such opinion; or

(ii) the only method of establishing at the date of publication of the catalogue that the lot was a 'deliberate forgery' was by means of scientific processes not generally accepted for use until after publication of the catalogue or a process which was unreasonably expensive or impractical.

(c) A buyer's claim under this Condition shall be limited to any amount paid in respect of the lot and shall not extend to any loss or damage suffered or expense incurred by him or her.

(d) The benefit of the Condition shall not be assignable and shall rest solely and exclusively in the buyer who, for the purpose of this condition, shall be and only be the person to whom the original invoice is made out by DNW in respect of the lot sold.

## Conditions mainly concerning Sellers and Consignors

### 13 Warranty of title and availability

The seller warrants to DNW and to the buyer that he or she is the true owner of the property or is properly authorised to sell the property by the true owner and is able to transfer good and marketable title to the property free from any third party claims. The seller will indemnify DNW, its servants and agents and the buyer against any loss or damage suffered by either in consequence of any breach on the part of the seller.

### 14 Reserves

The seller shall be entitled to place, prior to the first day of the auction, a reserve at or below the low estimate on any lot provided that the low estimate is more than £100. Such reserve being the minimum 'hammer price' at which that lot may be treated as sold. A reserve once placed by the seller shall not be changed without the consent of DNW. DNW may at their option sell at a 'hammer price' below the reserve but in any such cases the sale proceeds to which the seller is entitled shall be the same as they would have been had the sale been at the reserve. Where a reserve has been placed, only the auctioneer may bid on behalf of the seller.

### 15 Authority to deduct commission and expenses

The seller authorises DNW to deduct commission at the 'stated rate' and 'expenses' from the 'hammer price' and acknowledges DNW's right to retain the premium payable by the buyer.

### 16 Rescission of sale

If before DNW remit the 'sale proceeds' to the seller, the buyer makes a claim to rescind the sale that is appropriate and DNW is of the opinion that the claim is justified, DNW is authorised to rescind the sale and refund to the buyer any amount paid to DNW in respect of the lot.

### 17 Payment of sale proceeds

DNW shall remit the 'sale proceeds' to the seller not later than 35 days after the auction, but if by that date DNW has not received the 'total amount due' from the buyer then DNW will remit the sale proceeds within five working days after the date on which the 'total amount due' is received from the buyer. If credit terms have been agreed between DNW and the buyer, DNW shall remit to the seller the sale proceeds not later than 35 days after the auction unless otherwise agreed by the seller.

18 If the buyer fails to pay to DNW the 'total amount due' within 3 weeks after the auction, DNW will endeavour to notify the seller and take the seller's instructions as to the appropriate course of action and, so far as in DNW's opinion is practicable, will assist the seller to recover the 'total amount due' from the buyer. If circumstances do not permit DNW to take instructions from the seller, the seller authorises DNW at the seller's expense to agree special terms for payment of the 'total amount due', to remove, store and insure the lot sold, to settle claims made by or against the buyer on such terms as DNW shall in its absolute discretion think fit, to take such steps as are necessary to collect monies due by the buyer to the seller and if necessary to rescind the sale and refund money to the buyer if appropriate

19 If, notwithstanding that, the buyer fails to pay to DNW the 'total amount due' within three weeks after the auction and DNW remits the 'sale proceeds' to the seller, the ownership of the lot shall pass to DNW.

### 20 Charges for withdrawn lots

Where a seller cancels instructions for sale, DNW reserve the right to charge a fee of 15 per cent of DNW's then latest middle estimate of the auction price of the property withdrawn, together with Value Added Tax thereon if the seller is resident in the European Union, and 'expenses' incurred in relation to the property.

### 21 Rights to photographs and illustrations

The seller gives DNW full and absolute right to photograph and illustrate any lot placed in its hands for sale and to use such photographs and illustrations and any photographs and illustrations provided by the seller at any time at its absolute discretion (whether or not in connection with the auction).

### 22 Unsold lots

Where any lot fails to sell, DNW shall notify the seller accordingly. The seller shall make arrangements either to re-offer the lot for sale or to collect the lot.

23 DNW reserve the right to charge commission up to one-half of the 'stated rates' calculated on the 'bought-in price' and in addition 'expenses' in respect of any unsold lots.

## General Conditions and Definitions

24 DNW sells as agent for the seller (except where it is stated wholly or partly to own any lot as principal) and as such is not responsible for any default by seller or buyer.

25 Any representation or statement by DNW, in any catalogue as to authorship, attribution, genuineness, origin, date, age, provenance, condition or estimated selling price is a statement of opinion only. Every person interested should exercise and rely on his or her own judgement as to such matters and neither DNW nor its servants or agents are responsible for the correctness of such opinions.

26 Whilst the interests of prospective buyers are best served by attendance at the auction, DNW will, if so instructed, execute bids on their behalf. Neither DNW nor its servants or agents are responsible for any neglect or default in doing so or for failing to do so.

27 DNW shall have the right, at its discretion, to refuse admission to its premises or attendance at its auctions by any person.

28 DNW has absolute discretion without giving any reason to refuse any bid, to divide any lot, to combine any two or more lots, to withdraw any lot from the auction and in case of dispute to put up any lot for auction again.

29 (a) Any indemnity under these Conditions shall extend to all actions, proceedings costs, expenses, claims and demands whatever incurred or suffered by the person entitled to the benefit of the indemnity.

(b) DNW declares itself to be a trustee for its relevant servants and agents of the benefit of every indemnity under these Conditions to the extent that such indemnity is expressed to be for the benefit of its servants and agents.

30 Any notice by DNW to a seller, consignor, prospective bidder or buyer may be given by first class mail or airmail and if so given shall be deemed to have been duly received by the addressee 48 hours after posting.

31 These Conditions shall be governed by and construed in accordance with English law. All transactions to which these Conditions apply and all matters connected therewith shall also be governed by English law. DNW hereby submits to the exclusive jurisdiction of the English courts and all other parties concerned hereby submit to the non-exclusive jurisdiction of the English courts.

### 32 In these Conditions:

(a) 'catalogue' includes any advertisement, brochure, estimate, price list or other publication;

(b) 'hammer price' means the price at which a lot is knocked down by the auctioneer to the buyer;

(c) 'total amount due' means the 'hammer price' in respect of the lot sold together with any premium, Value Added Tax chargeable and additional charges and expenses due from a defaulting buyer in pounds sterling;

(d) 'deliberate forgery' means an imitation made with the intention of deceiving as to authorship, origin, date, age, period, culture or source which is not shown to be such in the description in the catalogue and which at the date of the sale had a value materially less than it would have had if it had been in accordance with that description;

(e) 'sale proceeds' means the net amount due to the seller being the 'hammer price' of the lot sold less commission at the 'stated rates' and 'expenses' and any other amounts due to DNW by the seller in whatever capacity and howsoever arising;

(f) 'stated rate' means DNW's published rates of commission for the time and any Value Added Tax thereon;

(g) 'expenses' in relation to the sale of any lot means DNW charges and expenses for insurance, illustrations, special advertising, packing and freight of that lot and any Value Added Tax thereon;

(h) 'bought-in price' means 5 per cent more than the highest bid received below the reserve.

### 33 Vendors' commission of sales

A commission of 15 per cent is payable by the vendor on the hammer price on lots sold.

### 34 VAT

Commission, illustrations, insurance and advertising are subject to VAT if the seller is resident in the European Union.







[www.dnw.co.uk](http://www.dnw.co.uk)

We were established in 1991 and are located in a six-storey Georgian building in the heart of London's Mayfair, two minutes walk from Green Park underground station.

Our staff of experts collectively have over 300 years of unrivalled experience on all aspects of numismatics, including coins of all types, tokens, commemorative medals, paper money, orders, decorations, war medals, militaria and numismatic books.

We hold numerous auctions each year, the full contents of which are published on the internet around one month before the sale date, together with a unique preview facility which is available as lots are catalogued and photographed. Printed auction catalogues for auctions are mailed to subscribers approximately three weeks prior to each sale.

In addition, we handle discreet private treaty sales of fine orders, decorations and medals.



*Auction viewing room*



*Reception*

Our offices, open from 9am to 5:30pm, Monday to Friday, include a pre-auction viewing room, enabling us to offer this facility to clients during the three weeks prior to an auction.

Auctions are held in our building at 16 Bolton Street, Mayfair, where sales may be attended in person. Free online bidding is available using our own live bidding system or by placing commission bids, all of which and much more being available via our website at [www.dnw.co.uk](http://www.dnw.co.uk).

We look forward to welcoming clients to Bolton Street and assure you of a warm reception.

#### Location

