



Jewellery, Watches and Objects of Vertu

Tuesday 15 March 2022 at 12 noon

BOARD OF DIRECTORS

Pierce Noonan Nimrod Dix	Chairman and CEO Deputy Chairman	Robin Greville Christopher Webb	Chief Technology Officer Director (Numismatics)
---	-------------------------------------	--	--

AUCTION AND CLIENT SERVICES

Philippa Healy	Head of Administration (Associate Director)	020 7016 1775	philippa@dnw.co.uk
Emma Oxley	Accounts and Viewing	020 7016 1701	emma@dnw.co.uk
Anna Gumola	Accounts and Viewing	020 7016 1701	anna@dnw.co.uk
Jackie Clark	Administrative Assistant	020 7016 1700	jackie@dnw.co.uk
Christopher Mellor-Hill	Head of Client Liaison (Associate Director)	020 7016 1771	christopher@dnw.co.uk
Chris Finch Hatton	Client Liaison	020 7016 1754	finch@dnw.co.uk
James King	Saleroom and Facilities Manager	020 7016 1755	james@dnw.co.uk
Lee King	Logistics and Shipping Manager	020 7016 1756	lee@dnw.co.uk

JEWELLERY, WATCHES AND OBJECTS OF VERTU

Frances Noble	Head of Department (Associate Director)	020 7016 1781	frances@dnw.co.uk
Laura Smith	Specialist	020 7016 1782	laura@dnw.co.uk
Rachel Bailey	Specialist	020 7016 1784	rachelbailey@dnw.co.uk
Joanne Lewis	Watch Specialist	020 7016 1785	joanne@dnw.co.uk
Jessica Edmonds	Junior Specialist and Auction Clerk	020 7016 1782	jessie@dnw.co.uk

MEDALS AND MILITARIA

Nimrod Dix	Head of Department (Director)	020 7016 1820	nimrod@dnw.co.uk
Oliver Pepys	Specialist (Associate Director)	020 7016 1811	oliver@dnw.co.uk
Mark Quayle	Specialist (Associate Director)	020 7016 1810	mark@dnw.co.uk
Michael Jackson	Consultant (Militaria)	020 7016 1700	michaeljackson@dnw.co.uk
Dixon Pickup	Consultant (Militaria)	020 7016 1700	dixon@dnw.co.uk
Thomasina Smith	Head of Numismatics (Associate Director)	020 7016 1832	thomasina@dnw.co.uk

BANKNOTES

Andrew Pattison	Head of Department (Associate Director)	020 7016 1831	andrew@dnw.co.uk
Michael O'Grady	Consultant	020 7016 1700	michaelogrady@dnw.co.uk

COINS, TOKENS AND COMMEMORATIVE MEDALS

Peter Preston-Morley	Head of Department (Associate Director)	020 7016 1802	ppm@dnw.co.uk
Jim Brown	Specialist	020 7016 1803	jim@dnw.co.uk
Tim Wilkes	Specialist	020 7016 1804	tim@dnw.co.uk
Bradley Hopper	Specialist	020 7016 1805	bradley@dnw.co.uk
Peter Mitchell	Consultant (British Hammered Coins)	020 7016 1700	petermitchell@dnw.co.uk
Douglas Saville	Consultant (Numismatic Literature)	020 7016 1700	douglassaville@dnw.co.uk
Richard Gladdle	Consultant (Historical Medals and Tokens)	020 7016 1700	richardgladdle@dnw.co.uk
Garry Charman	Consultant (British & World Coins and Tokens)	020 7016 1700	garrycharman@dnw.co.uk
Michael Trenerry	Consultant (Ancient and Medieval Coins)	020 7016 1700	michaeltrenerry@dnw.co.uk
Colin Fraser	Consultant (English and Scottish Coins)	020 7016 1700	colinfraser@dnw.co.uk

ARTEFACTS AND ANTIQUITIES

Nigel Mills	Specialist	020 7016 1700	nigelmills@dnw.co.uk
--------------------	------------	---------------	----------------------

TECHNOLOGY AND MEDIA

Robin Greville	Head of Systems Technology (Director)	020 7016 1750	robin@dnw.co.uk
Ian Anderson	Head of Online Services (Associate Director)	020 7016 1751	ian@dnw.co.uk
Dan Noonan	Web Developer	020 7016 1700	dan@dnw.co.uk
Ian Kington	Head of Photography (Associate Director)	020 7016 1774	iank@dnw.co.uk
Henry Browne	Deputy Head of Photography	020 7016 1773	henry@dnw.co.uk
Jordan King	Photographic Assistant and Auction Clerk	020 7016 1772	jordan@dnw.co.uk
Jan Starnes	Photographic Consultant	020 7016 1700	jan@dnw.co.uk
Clair Perera	Head of Graphic Design and Marketing	020 7016 1752	clair@dnw.co.uk
Rachel Aked	Press Officer	07790 732448	rachel@rachelaked.co.uk
Danielle Quinn	Online Marketing and Auction Clerk	020 7016 1700	danielle@dnw.co.uk

OVERSEAS REPRESENTATIVES

AUSTRALIA Western Australia

John BurrIDGE MG
johnburrIDGE@dnw.co.uk

CANADA Ontario

Tanya Ursual
tanyaursual@dnw.co.uk

GERMANY Berlin

Michael Gietzelt
michaelgietzelt@dnw.co.uk

JAPAN Tokyo

Eiichi Ishii
eiichiishii@dnw.co.uk

SOUTH AFRICA Cape Town

Natalie Jaffe
nataliejaffe@dnw.co.uk

USA Maryland

Dr Andy Singer
andysinger@dnw.co.uk

AN AUCTION OF

Jewellery, Watches and Objects of Vertu

Tuesday 15 March 2022
at 12 noon

Live Online Auction

Free live bidding:
www.dnw.co.uk

VIEWING

Wednesday 9 March 10am - 4.30pm

Thursday 10 March 10am - 7pm

Friday 11 March 10am - 4.30pm

Sunday 13 March 12 noon - 4pm

Monday 14 March 10am - 4.30pm

Morning of Sale 9.30am - 11am

All lots are available to view online with full illustrations and
condition reports at www.dnw.co.uk

Jewellery:

Frances Noble FGA DGA

Laura Smith FGA DGA

Rachel Bailey FGA DGA

Jessica Edmonds Cert GA

Watches:

Joanne Lewis

Enquiries: Tel 020 7016 1781 or email jewellery@dnw.co.uk

Front cover: Lot 295 Back cover: Lot 344



DIX NOONAN WEBB Ltd | 16 Bolton Street, Mayfair, London W1J 8BQ | 020 7016 1700

Account enquiries: accounts@dnw.co.uk

To place a commission bid or order a catalogue go to www.dnw.co.uk

Bankers:

Lloyds, 39 Piccadilly, London W1J 0AA

Sort code: 30-96-64

Account No. 00622865

Swift Code: LOYDGB2L

IBAN: GB70LOYD30966400622865

BIC: LOYDGB21085

Summary of Information for Buyers

Registering to Bid

It is strongly recommended that you contact us as early as possible if you wish to bid in one of our auctions and have never previously registered with us. This may be done via our website (www.dnw.co.uk > **Your Account > Account Authorisation**), by email to auctions@dnw.co.uk or by telephone to 020 7016 1700. The period directly before our auctions is extremely busy and we cannot guarantee that the registration process, which may include security checks, can be carried out in time for you to bid if your request is received by us at a late stage.

Bidding Priority

Please note that we prioritise executing commission bids as early as possible in order to secure the lot for you at the cheapest possible price. It is therefore entirely possible that a lot can sell at your top bid to another bidder. To avoid this happening we offer an optional 'Plus 1' bidding increment facility, whereby if the bidding is against you at your maximum bid the auctioneer will execute one further bid on your behalf. Please note that in the event of identical top bids priority is given to the first bid received.

Placing Bids

Live Bidding via www.dnw.co.uk

You may bid in real time from your computer or mobile device. We provide an optional live video and audio feed of the auctioneer, allowing you to participate in much the same way as attending the auction. You may see your invoice and pay online directly after you've finished bidding. **There is no additional charge for this.**

Advance Bidding via www.dnw.co.uk

We strongly advise this method if you wish to leave bids in advance as it is the easiest, most accurate and flexible way to leave your bids and gives you total control over them right up to the point that the lot is offered for sale. Bids made online cannot be seen by others and only become live at the point the lot is being sold. Up until this time your bids can be easily altered or cancelled. An automated email is sent to confirm any changes made. **There is no additional charge for online bidding** and it is not necessary to pre-register a payment card in order to do so.

Postal and Telephone Bids

Whilst we are still happy to execute all bids submitted to us using post or telephone, it should be noted that all bids left with us in these ways will be entered at our offices using exactly the same bidding facility to which all our clients have access. **There is, therefore, no better way of ensuring the accuracy of your advance bids than to place them yourself online.**

If you are registered with DNW you may bid by email to auctions@dnw.co.uk or by telephone to 020 7016 1700. *All bids placed by email or telephone must be received before 16:00 on the day preceding the sale.*

A bidding form is included in the back of this catalogue. If you wish to use this please fill it in carefully, to include all relevant information. *Please ensure that you post this form so that it arrives, at the latest, the day before the sale.*

Bidding in the Auction Room

You are very welcome to attend the auction and bid in person if you are registered with DNW. Please note that the auction room is situated on the third floor of a Georgian building which doesn't have a lift. You may pay for and clear your lots during the auction.

Saleroom Notices

Should the description of a lot need to be amended after the publication of this catalogue, the amendments will appear automatically on the DNW website, www.dnw.co.uk. All such amendments are also incorporated in the List of Saleroom Notices pertaining to this auction which are posted separately on the website. The auctioneer will refer to any notices at the time any affected lot is offered for sale.

Catalogue Illustrations and the Internet

Prospective bidders are reminded that the DNW website features high-resolution colour illustrations of **every** lot in this auction. There may also be additional illustrations of any lot.

Buyers' Premium

The rate for this sale is **24%** of the Hammer Price + VAT when collected or delivered within the UK.

Importation Duty

Lots marked 'x' are subject to importation VAT of **5%** on the Hammer Price unless re-exported outside the UK.

Treated Gemstones

It is common practice for many gemstones to be subject to various treatments to improve their appearance. Sapphires and rubies are routinely heat treated to improve their colour and clarity, emeralds may be treated with oils or resin, other gemstones may be subject to treatments such as staining, irradiation or coating. Jade may be bleached, polymer/resin filled or dyed, or a combination of treatments used. Bidders should be aware that, unless stated to the contrary in the catalogue description, it should be assumed that the gemstones may be treated. Where reports are provided from gem laboratories, the opinions as to gradings and treatments of stones may differ slightly between laboratories and DNW cannot be held responsible for any discrepancies.

Unmounted Gemstones

Please note that VAT at 20% is payable on the Hammer price for unmounted diamonds, rubies, sapphires and emeralds. Relevant lots are marked with an asterisk*.

See www.gov.uk/guidance/the-margin-and-global-accounting-scheme-vat-notice

Export of Ivory

The US Government has banned the import of ivory into the USA.

Export of Other Organic Materials

Other organic materials, such as coral and tortoiseshell may be covered by CITES legislation and this may or may not impact export to other countries. Please be aware that it is the buyer's responsibility to arrange for any CITES export licences for their purchases. Please see www.cites.org. In addition to CITES, mother-of-pearl, coral, and tortoiseshell, if imported into the USA, will be subject to USA Fish and Wildlife regulations.

Export of Watches

Please note that watches by CORUM, FRANCK MULLER, PIAGET, TUDOR AND ROLEX are subject to import restrictions into the USA. Please also note that in some circumstances we are unable to ship the watch with its strap due to certain import restrictions regarding material derived from endangered or protected species.

Prices Realised

The hammer prices of lots sold at DNW auctions are posted at www.dnw.co.uk in real time and telephone enquiries are welcome from 09:00 on the day after the auction.

Payment

You may access your invoice shortly after the hammer has fallen on your last lot. As we weigh lots at the time of cataloguing most shipping is already calculated, enabling you to settle your account, clear and receive your lots in a timely fashion.

*Full Terms and Conditions of Business are available to read
in the back of this catalogue and on our website.*

CONTENTS

Please note: Lots will be sold at a rate of approximately 120 per hour

Tuesday 15 March at 12 noon

Jewellery.....	1-300
Watches.....	301-373
Objects of Vertu	374-422

FORTHCOMING EVENTS

AUCTIONS

JEWELLERY, WATCHES AND OBJECTS OF VERTU

14 June

Closing date for entries **3 May**

13 September

Closing date for entries **4 August**

29 November

Closing date for entries **10 October**

VALUATION DAYS

RICHMOND

Richmond Hill Hotel

3 March

KINGSBRIDGE

Harbour House

9 March

SHAFTESBURY

Shaftesbury Arts Centre

10 March, 7 April

WELLS

Wells Town Hall

11 March

BERKHAMSTED

Berkhamsted Town Hall

17 March

HENLEY-ON-THAMES

Hotel du Vin

22 March

HAMPSTEAD

Burgh House & Hampstead Museum

23 March

BLACKHEATH

Clarendon Hotel

24 March

NORWICH

Maids Head Hotel

28 March

LANGPORT

Great Bow Wharf Gallery

1 April

LUDLOW

The Feathers Hotel

11 April

Please see www.dnw.co.uk for full venue details and latest updates

All dates are provisional and do not constitute a full listing for the date span shown.

Jewellery





- 1 An early 20th century French gold and enamel pendant**, the double-sided circular pendant designed as two peacocks, displaying their plumage, decorated in polychrome plique à jour enamel, French assay mark, diameter 26mm. £400-£600



- 2 A diamond eternity ring by Wempe**, channel set with a continuous row of brilliant-cut diamonds, stamped '750', signed 'WEMPE', ring size M. £480-£550



- 3 A diamond ring**, set with a princess-cut diamond in a raised claw setting, between shoulders tension-set with baguette-cut diamonds, principal diamond approximately 0.30 carat, ring size O½. £240-£300



- 4 A diamond half hoop eternity ring**, channel set with a row of brilliant-cut diamonds, stamped 'PLAT', ring size M. £200-£300

- 5 A tourmaline and diamond line bracelet**, set with a continuous row of square-cut pink and green tourmalines between a border of brilliant-cut diamonds, stamped '750', length 18.5cm. £1,800-£2,200





6 A diamond rivière necklace, set with a graduated row of collet set brilliant-cut diamonds, stamped '750', total diamond weight approximately 5.10 carats, length 42cm.
£2,000-£3,000



- 7 Of Royal interest: An enamel and diamond Royal presentation brooch, circa 1910-1915**, Royal Household, the blue and white enamel Garter with diamond buckle and terminal, the cypher for King George V set throughout with vari-cut diamonds and surmounted by a crown with red enamel cap, diamond frame, white enamel ermine and ruby, emerald and diamond set band, mounted in platinum and gold, *length 45mm.* £1,000-£1,500

Provenance: Lot 132, Morton & Eden, The George A. von Peterffy Collection of Jewelled Military Badges, 27 November 2013.



- 8 Of Regimental interest: A Royal Artillery gold diamond and enamel set sweetheart brooch**, set with rose-cut diamonds, *length 34.5mm.* £200-£260

- 9 Of Regimental interest: A Scots Guard diamond sweetheart brooch**, set throughout with rose-cut diamonds, the green enamel plaque centred with a Scottish thistle motif encircled within the Latin motto of the Royal Stuart dynasty: 'NEMO ME IMPUNE LACESSIT' ('No one provokes me with impunity'), silver mounted, *diameter 25mm.* £100-£200



- 10 An early 20th century diamond naval crown bar brooch**, the crown set with single and rose-cut diamonds, to a knife-edge bar, mounted in platinum and gold, stamped '18CT PLAT', *length 45mm.* £100-£120



- 11 Of Regimental interest: Four silver Regimental brooches**, two for the Royal Engineers, silver on tortoiseshell ground, the third a silver Royal Artillery horseshoe brooch, the fourth, a silver brooch for the Rifle Brigade (Prince Consort's Own), together with an enamel naval brooch, hallmarks for Birmingham 1914, Chester 1915, Birmingham 1916 and London 1917 respectively, *various lengths.* £60-£80



12 A collection of antique seals and watch key fobs, comprising seven gold mounted hardstone inset fob seals, to include a tricolour gold example, circa 1830, together with eight watch key fobs, one modelled as a horse's hoof inset with a bloodstone seal, a George V half sovereign, 1912, and an enamelled fob in the form of the insignia of the Knights Templar, etc., various lengths. (18) £800-£1,000



- 13 Two 19th century shell cameo brooches**, the first oval cameo carved to depict the *Venus Anadyomene* or The Birth of Venus, Venus depicted arising from the sea on a scallop shell accompanied by a cherub riding a pair of dolphins, with Helios Apollo riding his horsedrawn chariot across the skies with cherubs and muses, collet set within a plain gold frame with scroll engraved ribbon details to the cardinal points, the second carved to depict a figure carrying a lyre on his back accompanied by a child, collet set in scroll engraved mount, first brooch length 71mm, second 52.5mm. £200-£300

The birth of Venus or Venus Anadyomene (Venus arises from the sea), was a popular subject in Classical and Neo-classical art. According to Roman myth, Venus, the goddess of love and fertility, was conceived when her father, the titan Caelus-Uranus, was castrated and his genitals thrown into the sea; she was 'born' as a fully formed woman (the ideal of womanhood) arising out of the sea foam. Helios Apollo was the classical Sun god, riding across the sky each day in his chariot.

This depiction appears to be loosely based on *The Birth of Venus* or *Le Triomphe de Neptune*, by Nicolas Poussin (1594–1665), currently housed in the Philadelphia Museum of Art.



- 14 A shell cameo brooch**, carved to depict Athena (Minerva), Goddess of War, in profile, her helmet depicting the she-wolf suckling the infants Romulus and Remus, gilt metal mounted, length 6.3cm. £100-£150

After a cameo by *Tommaso Saulini*, exhibited at the International Exhibition in London, 1862.

Literature:

Rowan, Michelle, *Nineteenth Century Cameos*, (pub. Antique Collectors Club, 2004), page 88.

- 15 A mid 19th century shell cameo brooch**, the oval shell carved to depict Phoebus and his Horses, in a scrolling gold surround, diameter 6cm. £80-£100

The image is after a cameo by *Tommaso Saulini* (1793-1864), illustrated in Malcolm Stuart Carr's article 'Tommaso and Luigi Saulini' in *The Connoisseur*, November 1975.





- 16** A gold mounted oval shell cameo brooch, second half 19th century, carved to depict Aurora (Dawn) in billowing dress, carrying garlands of flowers and leading Apollo, God of the Sun, in his golden chariot drawn by four horses, with winged putto, Twilight, above, bearing a flaming torch, and surrounded by a dancing maidens (the Hours), all bearing to earth the light of the New Day; the cameo mounted within a scrollwork border with closed back setting, dimensions 8.3 x 6.5cm. £700-£1,000

The image is after Guido Reni, **L'Aurora**, 1613-14, the ceiling fresco painted for the Casino dell'Aurora adjacent to the Palazzo Pallavicini-Rospigliosi, Rome, and commissioned by Cardinal Scipione Borghese.





Partially illustrated

- 17** A pair of Danish silver ear clips by Georg Jensen, circa 1978, of knot design, maker's mark, London import mark, together with a small collection of jewellery, comprising three pairs of ear studs and a late 19th century turquoise and diamond heart-shaped pendant, diamonds deficient, ear clip length 28mm, remaining jewellery various lengths. (5) £140-£160

- 18** An Arts & Crafts stained green and blue chalcedony pendant, attributed to Sybil Dunlop, the square pendant set with oval and pear-cut cabochons with central sugarloaf, in collet settings with beaded detail between, suspended from twin ropetwist baton links below a pair of blue cabochons, to similar baton links above and belcher-link back chain with green chalcedony spacer beads, pendant length 35mm, necklace length 39.5cm. £300-£500

- 20** A silver and amethyst bracelet, in the style of Antonio Belgiorno, the articulated bracelet formed of overlapping fan-shaped links with scalloped detailing, centred with an applied cushion-shaped amethyst cabochon in a ropetwist collet setting, stamped 'MEXICO SILVER', length 20cm. £150-£200

- 19** A silver and agate necklace, comprised of alternating agate and silver baton shaped links, the clasp stamped 'TAXCO MEXICO', with indistinct maker's marks, length 82.2cm. £100-£150



Yen Duong

Yen Duong is a modern designer of Vietnamese heritage, her early years being spent in Wales. She studied at the Sir John Cass School of Art in London, graduating in 1995. She established YEN Jewellery the following year, her designs showing her fascination with the structural elements of jewellery, and incorporating movement and fluidity, with a highly tactile quality. Previous exhibitions of her work include those held at The Goldsmiths' Company and the Crafts Council, and she has worked with Liberty of London, Selfridges and Harvey Nichols.



- 21** A silver and blue stone 'molecule' ring and earrings suite by YEN, the ring set with a faceted blue stone within silver 'molecule' setting, to a multi-wired silver band, the earrings to post fittings, with maker's mark 'YD' and London hallmarks for 2016, earrings approximately 15mm diameter, ring size U½. **£100-£200**

- 22** A silver 'molecule' bracelet by YEN, composed of multiple 'molecule' links, with maker's mark 'YD' and London hallmark for 2014, length 18.2cm. **£100-£200**



Palle Bisgaard

The self taught Danish modernist silversmith **Palle Bisgaard** opened his workshop in Kirke Hyllinge, near Roskilde, in 1954, the same year as fellow silversmith Arne Johansen. Examples of Bisgaard's work have been exhibited at the Danish Silver Museum at Koldinghus, the Danish Society of Arts and Crafts and Industrial Design, and included in the Metropolitan Museum of Art's touring exhibition of 'The Arts of Denmark: Viking to Modern'.

- 23** A mid 20th century Danish modernist silver bracelet by Palle Bisgaard, composed of cushion-shaped abalone shell panels, signed 'P.Bis, Sterling, Hand-made, Denmark, 2', cased, length 18.5cm. **£100-£150**

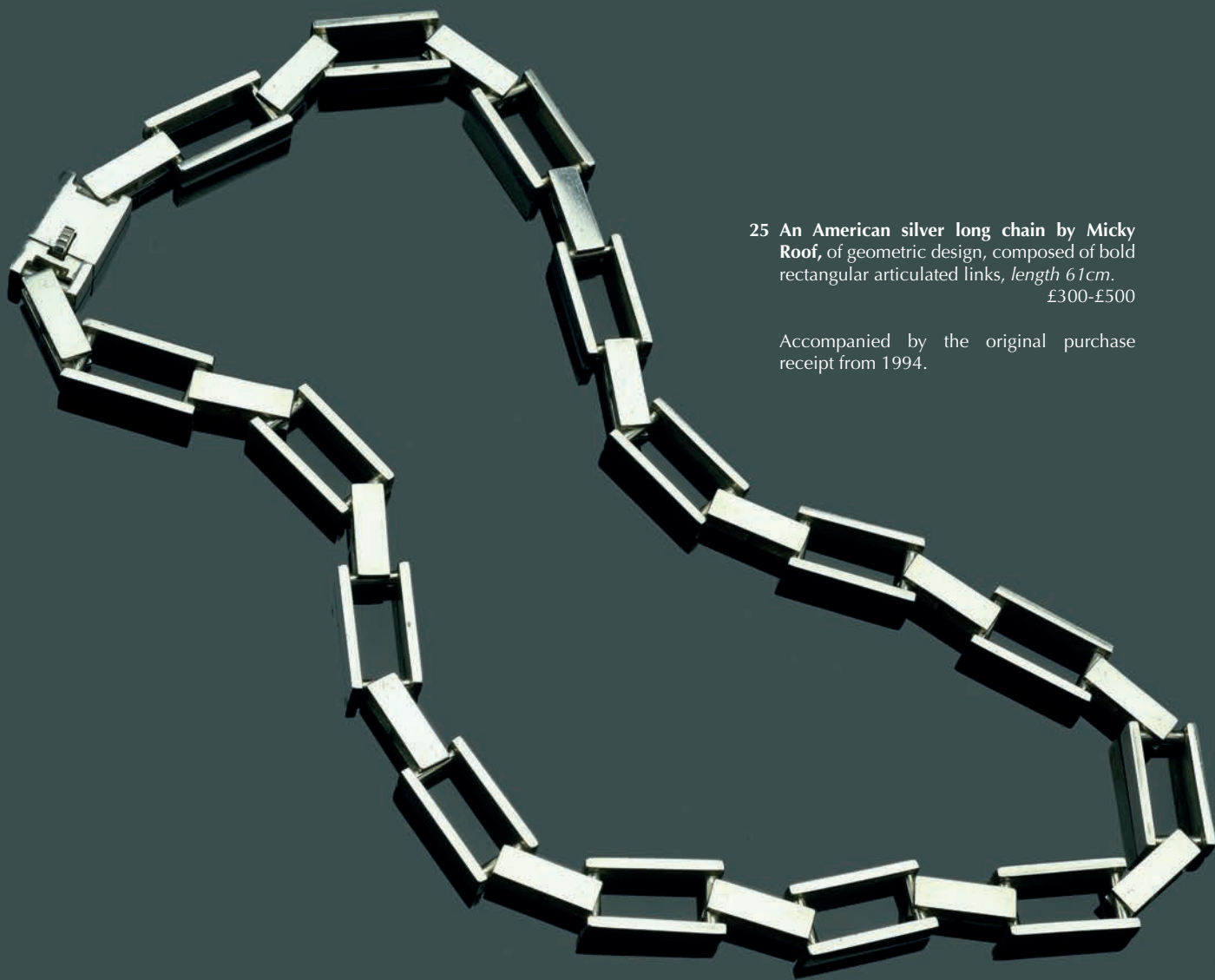


24 A silver and enamel pendant by Jane McAdam, 1984, and a silver stylised feather pin brooch, the two-way pendant, reminiscent of a Pierrot's hat, suspended from a fine silver chain, accompanied by a letter and drawing by the maker, London hallmark, together with a silver stylised feather pin brooch, retailed by The Oxford Gallery (1968-2001), brooch length 10cm.
£80-£100



25 An American silver long chain by Micky Roof, of geometric design, composed of bold rectangular articulated links, length 61cm.
£300-£500

Accompanied by the original purchase receipt from 1994.



- 26 A hematite and diamond pendant**, the circular hematite cabochon with engraved decoration, the surround and bale set with brilliant-cut diamonds, on a fancy-link chain, clasp stamped '750', Italian assay mark, *total diamond weight approximately 0.45 carat, pendant length 41mm, chain length 40cm.* £400-£600



- 27 A silver skull pendant, 1986**, realistically modelled, with hinged jaw and scroll engraved detail to the crown, Birmingham hallmark, indistinct maker's mark, *length 31.5mm.* £100-£200



- 28 A diamond and sapphire bar brooch**, centred with an oval-cut sapphire collet set within an open lozenge, between pierced decorated rose-cut diamond set shoulders, white precious metal mounted, *length 6.5cm.* £200-£300

- 29 A Sri Lankan star sapphire ring**, the star sapphire cabochon, weighing 12.01 carats, in a rubover setting and tapering mount, personal inscription to inner shank 'T.H.B. 8-5-86', *ring size S.* £1,500-£2,500

A verbal report from GCS stated that the star sapphire is of Sri Lankan origin, with no indications of heating. Verbal report number 5782-513.





30 An Art Deco emerald and diamond bow brooch, circa 1930, pavé set with old single-cut diamonds, with calibré and circular-cut emerald highlights, mounted in platinum, replacement brooch fitting, length 40mm. £300-£400

31 A pair of diamond cluster ear studs, set throughout with old round brilliant-cut diamonds, total diamond weight approximately 2.00 carats, length 12.5mm. £600-£800



32 An emerald and diamond dress ring, the marquise-cut emerald with a pear-cut diamond to either side, stamped '750', lozenge maker's mark to shank, emerald weight approximately 5.50 carats, total diamond weight approximately 2.10 carats, ring size N½. £3,000-£4,000





33 A cultured pearl, emerald and diamond necklace and earring suite, circa 1985, the cultured pearl necklace leading to a frontispiece formed of three flowerheads set with circular-cut emeralds and brilliant-cut diamonds, the earrings en suite, clasp with London hallmark for 18ct gold, earrings stamped '18K', necklace length 43cm, earring length 25mm. (2) £700-£1,000

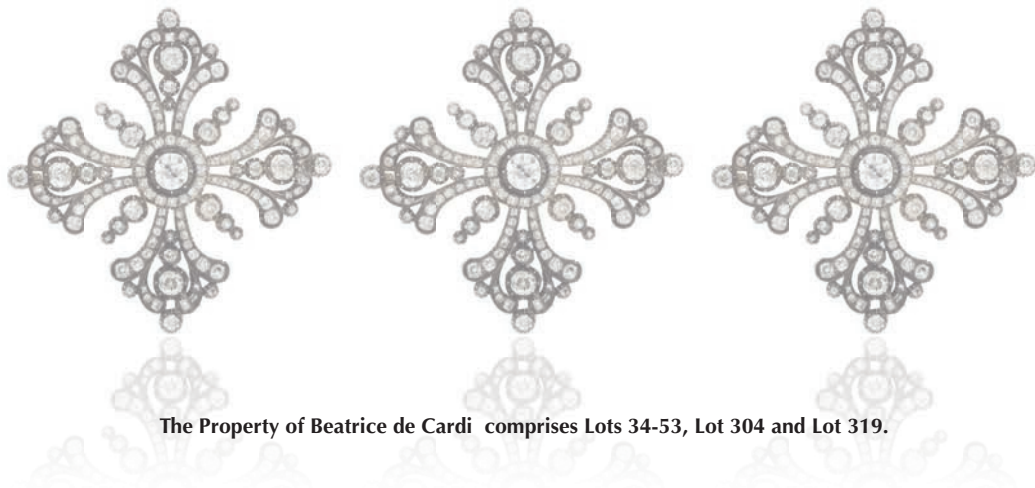
The Property of Beatrice de Cardi



Beatrice de Cardi (1914-2016)

Beatrice de Cardi undertook pioneering fieldwork and research in the Arabian Gulf and Pakistan. Over the course of a long and distinguished career she was President of the British Foundation for the Study of Arabia, the first Secretary of the Council for British Archaeology, and a recipient of the Gold Medal of the Society of Antiquaries of London. The awards named after her are for the furtherance of archaeological research by field survey, excavation and the publication of the fieldwork in the United Arab Emirates, the Sultanate of Oman, Saudi Arabia, and the Pakistan province of Balochistan.

Beatrice de Cardi left her estate to the Society of Antiquaries of London and, in accordance with her wishes, the proceeds of this sale will go towards the de Cardi awards fund and perpetuate her legacy.



The Property of Beatrice de Cardi comprises Lots 34-53, Lot 304 and Lot 319.

For full illustrations of mixed lots,
see web images at www.dnw.co.uk

34 An early 19th century diamond brooch/pendant, the Maltese cross set throughout with old brilliant and cushion-cut diamonds, mounted in silver and gold, bale deficient, total diamond weight approximately 5.00 carats, length 5cm. £2,000-£3,000





- 35 A diamond single stone ring**, set with a cushion-cut diamond on a tapered gold band, *diamond weight approximately 1.95 carats, ring size O.* £1,500-£2,000



- 36 A sapphire and diamond ring**, set with a cushion-shaped sapphire with pairs of old brilliant-cut diamonds to either side, to a tapered gold band, London hallmark (rubbed), possibly 1933, *total diamond weight approximately 2.00 carats, ring size L.* £1,200-£1,500



- 37 A diamond single stone ring**, the old brilliant-cut diamond on a plain polished gold band, *diamond weight approximately 1.00 carat, ring size N.* £1,000-£1,500



- 38 A ruby and diamond ring**, alternately set with graduated rubies and old brilliant-cut diamonds, to a scrollwork gold mount, stamped '18CT', *total weight approximately 0.40 carat, ring size M.* £1,000-£1,500

- 39 A small collection of jewellery**, comprising a Victorian gold cross pendant on a fine ropetwist chain, a Victorian snake-link chain necklace, a gilt ropetwist chain, a larger ropetwist chain and a long silver belcher-link chain, *various lengths.* (15) £500-£700

- 40 Two pairs of enamel and diamond earrings**, converted from 19th century jewels, each of bombé design with blue enamel star decoration and set with old brilliant-cut diamonds, mounted in gold, *diameters 8.3 - 16.2mm.* £1,000-£1,200

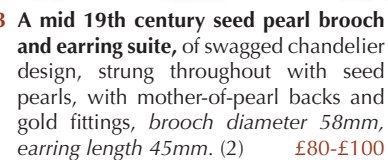




41 A Victorian gold fancy-link long chain, of entwined knot design, stamped '9C', length 146cm. £400-£600



42 A gilt filigree brooch and ear pendants, the brooch modelled as a jardinière, the ear pendants of cascade design, brooch length 39mm, earrings 40mm. £60-£80



43 A mid 19th century seed pearl brooch and earring suite, of swagged chandelier design, strung throughout with seed pearls, with mother-of-pearl backs and gold fittings, brooch diameter 58mm, earring length 45mm. (2) £80-£100



44 An antique charm bracelet and locket, the curb-link gold bracelet suspending a coin fob and a gem-set barrel-shaped charm converted from a clasp, together with a 15ct gold heart-shaped locket set with an old brilliant-cut diamond, bracelet stamped '9C', locket with Birmingham hallmark for 1905, various lengths. (3) £500-£700

45 A small collection of antique jewellery, to include a 15ct gold seed pearl and diamond memorial ring, a diamond single stone ring with pierced shoulders, a cannetille work ring, a gold mounted turquoise and seed pearl bangle, together with a pair of matching rings, and further items, the bangle and one ring with French assay mark, ring sizes K - T, bangle inner diameter 5.6cm. (8) £500-£700

46 Two 19th century shell cameo brooches and a shell cameo pendant, the first depicting Hebe and the Eagle, in base metal mount, the second of Hermes, Messenger of the Gods, the third with the head of the Gorgon, Medusa, mounted in gold, French assay mark, first length 5cm. (3) £260-£300





47 A 19th century amethyst brooch, the oval- shaped amethyst in a pinched collet setting with a bicoloured gold surround with foliate decoration and textured finish, *length 34mm.* £200-£300



48 Two antique diamond rings, the first claw set with a graduated row of old brilliant-cut diamonds, the second set with an old brilliant-cut diamond in a raised claw setting, both mounted in gold, first with partial hallmark for 18ct, *total diamond weight approximately 0.80 carat, ring sizes L and N respectively.* £700-£1,000

Please note coral is covered by CITES legislation and may be subject to import/export and trade restrictions and USA Fish and Wildlife regulations. Please be aware that it is the buyer's responsibility to arrange any CITES export license for their purchases. More information can be found at www.cites.org

49 A late 19th century pearl ring and a coral ring, 1870, the first set with a row of graduated half pearls in shared claw settings, mounted in 15ct gold, the second bezel set with a series of graduated corallium Rubrum cabochons, mounted in 18ct gold, London hallmark, *ring sizes R and S respectively.* £360-£460



50 A collection of assorted coin brooches, to include a Hyderabad rupee coin mounted brooch, a Maundy money brooch, a French franc/centimes brooch, an 1815 Waterloo bar brooch and an 1870 Austro-Hungarian coin, *various lengths.* (qty) £80-£100

51 A small collection of antique jewellery, comprising an interlocking ruby and diamond horseshoe brooch, four late 19th / early 20th century bar brooches, four further brooches, a pair of garnet domed earrings, two further pairs of domed earrings and a gilt spherical fob on chain, *various lengths.* (qty) £100-£150



52 A collection of 19th century jewellery, to include a pair of paste earrings, mounted in gold, French assay marks, a cased set of three gold studs, a coral and enamel stickpin, a coral and seed pearl brooch and earring suite, a garnet bracelet, etc., *various sizes and lengths.* (qty) £200-£400

Partially illustrated

53 A mid 19th century pink topaz bracelet, the repoussé gold bracelet of foliate design, set with a graduated row of three oval-shaped pink topaz, length 18.5cm. £600-£800





54 An opal and seed pearl brooch/pendant, circa 1900, of whiplash scroll design set throughout with half seed pearls, centred with an opal and seed pearl quatrefoil and suspending a single claw-set opal drop, mounted in gold, on an unassociated ropetwist chain, pendant length 5cm. £100-£150



55 An amethyst necklace, circa 1900, the openwork pendant of scroll and foliate design, set with an oval-cut amethyst to the centre and similarly-cut amethyst drop below, on a trace-link chain, mounted in gold, stamped '9ct', together with a white metal bar brooch suspending three cow bells, pendant length 45mm. £100-£150

Partially illustrated



56 Two early 20th century gem-set pendants, each of open scrollwork design, the first set with a circular-cut amethyst and seed pearls, to a later gold chain, the second set with two similarly-cut garnets and seed pearls, both stamped '9CT', lengths 38mm and 50mm respectively. £240-£300



57 Three early 20th century jewels, the pendant of elongated trefoil design set with two blue pastes and seed pearl highlights, with foliate decoration, together with a diamond and half-pearl bar brooch and a plain polish bar brooch, all mounted in gold, pendant length 48mm. £120-£150

58 An Art Deco pearl necklace with sapphire and diamond clasp, the graduated pearls and seed pearls to a clasp set with a square-cut sapphire and two brilliant-cut diamonds, (pearls untested), length 51cm. £100-£200





59 An amethyst, seed pearl and enamel fringe necklace, circa 1900, the belcher-link chain suspending a fringe of foliate drops set with circular amethyst cabochons, green enamel leaves and seed pearl highlights, the front with a detachable drop en suite, mounted in gold, composite, length 40cm.
£800-£1,200

60 An early 20th century opal, seed pearl and diamond pendant, the bow surmount set with rose-cut diamonds and a seed pearl above a similarly-set knifewire frame of garland design suspending a pear-shaped opal cabochon drop within, mounted in gold, length 36mm.
£1,500-£2,000



61 A 9ct gold necklace, of ropetwist design, together with a short section of 18ct gold curb-link chain, necklace with import mark, chain with partial hallmarks, necklace length 47cm.
£200-£300



Please note coral is covered by CITES legislation and may be subject to import/export and trade restrictions and USA Fish and Wildlife regulations. Please be aware that it is the buyer's responsibility to arrange any CITES export license for their purchases. More information can be found at www.cites.org



- 62 A coral dress ring**, the oval *Corallium Rubrum* cabochon in a rubover setting, the openwork gallery with undulating ropetwist detailing, stamped 'K14', ring size M. £150-£200

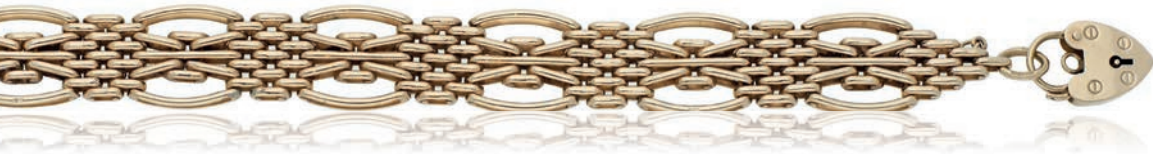
- 63 A diamond bar brooch, circa 1910**, the knife-edge bar set with three old brilliant-cut diamonds, mounted in platinum and gold, total diamond weight approximately 1.00 carat, length 6cm. £300-£500



- 64 A diamond cluster ring**, the brilliant-cut diamond cluster between similarly-cut diamond shoulders, mounted in 9ct gold, London hallmark, total diamond weight approximately 0.50 carat, ring size O. £200-£300



- 65 A 9ct gold bracelet**, the fancy gate-link bracelet with a heart-shaped padlock clasp, Birmingham hallmark for 1992, length 19.5cm. £400-£600



- 66 A 9ct gold bracelet**, the tricolour bracelet formed of textured brick-links within a polished herringbone border, London import mark for 1979, length 21cm. £360-£400

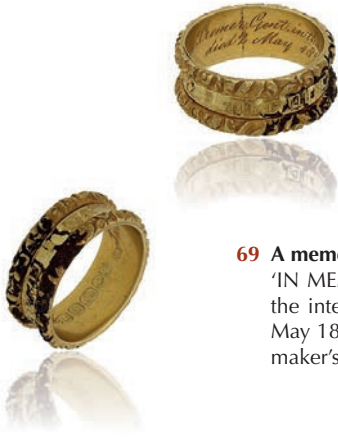


- 67 A coral rope necklace**, the barrel-shaped *Corallium Rubrum* beads strung as a single row necklace, length 242cm. £150-£200





68 A coral, seed pearl and diamond suite, circa 1977, comprising necklace, bracelet and ear pendants, the *Corallium Rubrum* beads interspersed by 18ct gold plaques set with coral cabochons and brilliant-cut diamonds, the necklace suspending a seed pearl tassel, the ear clips with detachable coral bead tassels, the bracelet en suite, London import marks, sponsor's mark 'RDP', earrings stamped '18K', 'ITALY', total diamond weight approximately 5.25 carats, necklace length 40cm, bracelet length 19cm, earring length 7cm. £1,200-£1,500



69 A memorial ring, 1820, the broad band engraved in Gothic script 'IN MEMORY OF', between chased foliate borders, engraved to the interior 'In Cromer, Gent. in the County of Norfolk died 2 May 1820 aged 66', 18ct gold mounted, hallmarked for London, maker's mark 'JG', ring size N (leading edge). **£200-£300**

70 A late 18th century mourning ring and a mid 19th century mourning ring, the first depicting a grieving woman beside a tomb, mounted in gold, closed-back navette-shaped setting, the second with black enamel and a seed pearl forget-me-not, mounted in gold, (both damaged), ring sizes Q and L. **£100-£200**



71 A gold and black enamel swivel memorial brooch, the tonneau-shaped brooch enamelled to the front, the glazed reverse composed of four compartments containing plaited hairwork, the inside case opening to reveal engraved initials 'E.M.', 'O.M.', 'M.M.' and 'E.A.M.', dimensions 39 x 19mm. **£300-£400**



72 A small collection of antique mourning jewellery, comprising a Georgian memorial ring, set with seed pearls, mounted in gold, (lacking hairwork and glass), and three early 19th century gold and hairwork memorial brooches, with foliate decoration, various lengths. (4) **£200-£300**



73 Of Duke of Wellington interest: An oval sulphide glazed cameo brooch, depicting Arthur Wellesley, 1st Duke of Wellington in profile, a dexter, within scroll and pierced work decorated gilt metal mount, length 56mm. £100-£150



74 A mid 19th century enamel and diamond clip, the hinged and sprung clip of buckle design, set with a row of old cushion-cut diamonds, with chased foliate engraving and blue enamel decoration, mounted in gold, length 27mm. £400-£600

75 A sapphire and diamond five stone ring, 1921, set with a graduated row of alternating circular-cut sapphires and old brilliant-cut diamonds, within a navette-shaped mount, to scrolled shoulders, mounted in 18ct gold, Chester hallmark, ring size K-L. £100-£150



76 A plain polished bangle, D-shape profile, stamped '750', inner diameter 6cm. £200-£300



77 A gold and seed pearl bangle, 1894, the hollow 9ct gold bangle centred with a graduated row of seed pearls and circular-cut blue gemstones, with ropetwist decoration, Birmingham hallmark, inner diameter 5.4cm. £150-£200



- 78 A diamond dress ring**, set with a brilliant-cut diamond within a swirl cluster surround set with baguette and marquise-cut diamonds, stamped '18CT', principal diamond approximately 0.80 carat, remaining total diamond weight approximately 3.00 carats, ring size J. £800-£1,000

- 79 A triple cluster diamond ring**, with central raised cluster, claw set throughout with brilliant-cut diamonds, hallmarked for 14ct gold, ring size O. £300-£400



- 80 A sapphire and diamond three stone ring**, the circular-cut sapphire between brilliant-cut diamonds, stamped 'PLAT', total diamond weight approximately 0.65 carat, ring size K (sizing beads). £300-£400

- 81 A diamond half hoop ring**, claw-set with a row of brilliant-cut diamonds, mounted in 18ct white gold, UK hallmark, ring size P. £200-£300



- 82 A sapphire and diamond dress ring, circa 1960**, of swirl design, centred with a line of round-cut sapphires, and bordered each side by diamond highlights, in raised wirework claw setting, white precious metal mounted, stamped '750', Italian assay mark, ring size J. £600-£800

83 A ruby and diamond bracelet, circa 1974, the tapered strap of stylised foliate design, set throughout with scrolls and clusters of circular and marquise-cut rubies and brilliant-cut diamonds, mounted in 18ct white gold, London import mark, sponsor's mark 'RDP', total diamond weight approximately 8.50 carats, length 19cm. **£2,000-£3,000**





84 A diamond pendant necklace, of wishbone design, set with calibr  and brilliant-cut diamonds and suspending a brilliant-cut diamond cluster drop below, to a trace-link chain, stamped '14k', pendant length 40mm, necklace length 45cm. £200-£300

85 A diamond set bar brooch, the knife-edge bar claw set with three old-cut diamonds, white precious metal mounted, total diamond weight approximately 0.50 carat, length 5.1cm. £200-£300



86 A pair of aquamarine and diamond cluster ear studs, the pear-shaped aquamarines within a surround of brilliant-cut diamonds, length 13mm. £460-£500

87 A pair of diamond ear studs and a diamond ring, the 18ct gold ear studs set with brilliant-cut diamonds in rubover settings, the 18ct white gold band inlaid to the front with three similarly-cut diamonds, UK hallmarks, total diamond weight approximately 0.30 carat, ring size L. (2) £300-£500



88 A diamond line bracelet, collet-set throughout with brilliant-cut diamonds, stamped 'K18', total diamond weight approximately 1.00 carat, length 18.5cm. £400-£600



89 A French cultured pearl necklace, the graduated cultured pearls to a silver clasp set with circular-cut pastes, French assay mark, maker's mark, length 52cm. £80-£120



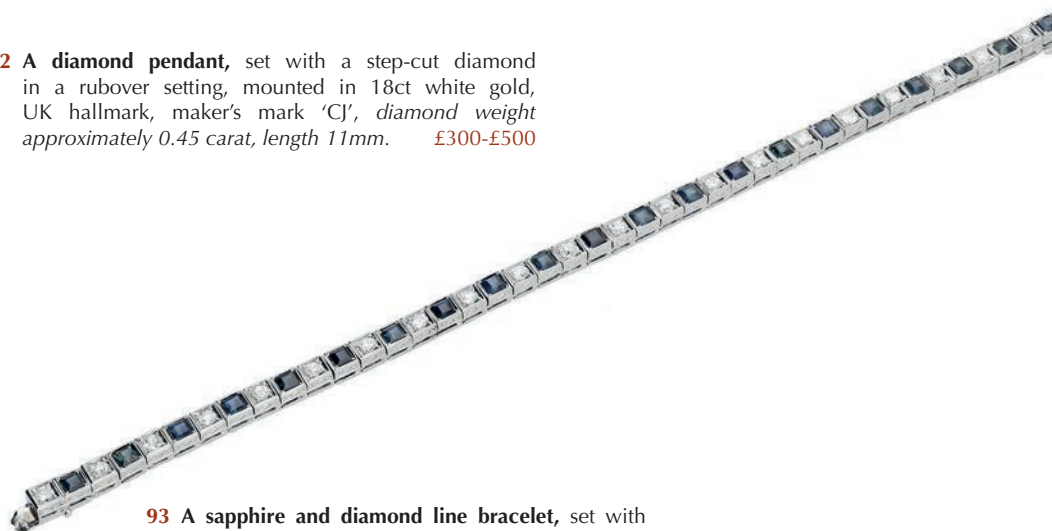


90 A morganite and diamond cluster pendant on chain, the rectangular mixed-cut morganite claw set within a surround of brilliant-cut diamonds, suspended from a trace-link chain, pendant length 15.2mm. £200-£250

91 A pair of morganite and diamond earrings, the brilliant-cut diamond stud surmount suspending a pear-shaped morganite and diamond cluster drop, stamped '14k', length 18.1mm. £200-£300



92 A diamond pendant, set with a step-cut diamond in a rubover setting, mounted in 18ct white gold, UK hallmark, maker's mark 'CJ', diamond weight approximately 0.45 carat, length 11mm. £300-£500



93 A sapphire and diamond line bracelet, set with an alternating series of square-cut sapphires and old brilliant-cut diamonds, indistinct assay mark, total diamond weight approximately 1.10 carats, length 18.5cm. £1,800-£2,000

94 A diamond eternity ring by Tiffany & Co., set throughout with brilliant-cut diamonds, mounted in platinum with millegrain detailing, signed, London hallmark for 2009, cased, ring size I. £800-£1,200





95 A tiger's-eye anchor-link bracelet, the oval tiger's-eye pierced panels with textured abstract connections, to a foliate engraved clasp, *length 18cm.*
£200-£300



96 A gold fancy-link bracelet and two jadeite jewels, the bracelet formed as a series of rectangular links, alternately decorated with an engraved sunburst and an openwork beaded design, together with a jadeite cabochon ring and a shield-shaped jadeite pendant, bracelet stamped 'K18', ring and pendant stamped '14', jadeite untested, *bracelet length 17.2cm.* (3) £400-£600

A surface analysis test at GCS confirmed the metal tested as 17 - 18 carat gold. Verbal report number 5782-315.



97 A malachite and diamond dress ring retailed by **David Morris**, circa 1972, of crossover design, each side set with a heart-shaped malachite plaque and a brilliant-cut diamond, with textured borders and satin finished shoulders, French assay mark, partial maker's mark, London import mark, sponsor's mark 'DM', *ring size N.* £300-£500



98 A tiger's eye bracelet, pendant and dress ring, the bracelet composed of five tiger's eye cushion-shaped panels, three decorated with pierced work African animals and figures, the reverse stamped with unidentified maker's mark, '375' HAND MADE SOUTH AFRICA', clasp stamped '9ct', with a bowed rectangular pendant en suite, applied with a cabochon tiger's eye, on suspensory loop, by the same maker, similarly stamped, together with a tiger's eye dress ring, of cubic reeded design, *bracelet length 18.8cm, pendant length (including suspensory loop) 5cm, ring size J (leading edge).* £500-£700





- 99** A lapis lazuli and gold bead necklace, the polished lapis lazuli beads spaced by hollow bloomed gold beads with ropetwist decoration, one extra loose bead included, length approximately 47cm. £700-£900

According to a surface analysis test at GCS, the metal tested as 18 carat gold. Verbal report number 5782-791.



Partially illustrated

- 100** Three gem-set rings, comprising a citrine single stone ring, a late 19th century lapis lazuli cabochon and seed pearl ring, mounted in gold, and a garnet cluster ring, ring sizes K-P. (3) £240-£300

- 101** A lapis lazuli panel ring, circa 1970, the overlapping lapis lazuli panels in textured collet settings, between similarly decorated bifurcated shoulders, stamped '18KT' and 'SWISS', maker's mark, ring size O½. £500-£700



- 102** A diamond ring by Kutchinsky, 1972, and a dress ring, circa 1970, the first designed as a bicoloured 18ct gold column, set with three brilliant-cut diamonds to one side, the second set with a rectangular lapis lazuli panel within an abstract quatrefoil surround set with two brilliant-cut diamond highlights, first signed 'Kutchinsky', London hallmark, maker's mark, second stamped '14Kt', total diamond weight approximately 0.50 carat, ring sizes G and K. £400-£600

EARLY JEWELLERY

THE THROCKENHOLT CROSS



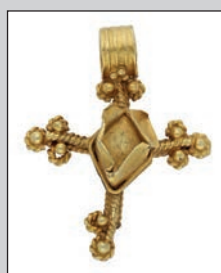
- 103 The Throckenholt Cross** - An early Medieval gold cross pendant, 11th-12th century, the Latin cross composed of arms of triple tiered ropetwist wires with trefoil terminals and beaded detail, with four further bead highlights at the point of intersection, to a broad reeded suspensory loop; applied to the centre is a slightly later Medieval (13th century) vacant lozenge-shaped setting, pendant length 31mm. £6,000-£8,000

This cross was found by a detectorist in Sutton St. Edmund, Lincolnshire in 2019.

The parish of Sutton St. Edmund includes the hamlet of Throckenholt, where a hermitage and chapel were granted to Thorney Abbey, by Nigel, Bishop of Ely (1133-69). It is probable that there had been a hermitage here for some time, as the Red Book of Thorney states that Throckenholt had been used as a hermitage since 1107. The hermitage is mentioned again in 1189-97 and 1348. In 1293-1305, Abbot Odo of Thorney ordered that two or three monks should reside there as had previously been the case. The chapel stood where Throckenholt farmhouse now stands, fragments of stone, bones and other relics having been found on the site at various times. It survived until at least 1540 when it is shown on a map of Wisbech Hundred (the original is in Wisbech Museum).

This cross is of a form associated with Medieval Greek Othodoxy in the Eastern Baltic region. A very similar pendant is illustrated in Austin and Alcocks (ed.), *From the Baltic to the Black Sea: Studies in Medieval Archaeology*, p 175, figure 10.6, row 5, no. 1. In the accompanying text on Medieval Britain it notes: "Accompanying the spread of Christianity, the archaeological material reveals small Orthodox (11th-14th centuries) and Catholic (12th-14th centuries) crosses, which were at first introduced from abroad." The illustrated example was discovered in Denmark. In the medieval period Denmark formed part of the Hanseatic League, a commercial and defensive confederation of merchant guilds and market towns in central and northern Europe, growing from a few north German towns in the late 12th century, to encompass nearly 200 settlements across seven modern-day countries at its height between the 13th and 15th centuries. Originally a loose association of traders and towns advancing their mutual commercial interests, these arrangements gradually coalesced into the Hanseatic League, a cohesive political organization by the end of the 13th century, whose traders enjoyed duty-free treatment, protection, and diplomatic privileges in affiliated communities and their trade routes. During the peak of its power, the Hanseatic League had a virtual monopoly over maritime trade in the North and Baltic Seas. King's Lynn, on the North sea coast, just 20 miles from Sutton St. Edmund, provided a significant enclave and trading partner for the Hanseatic League, housing a representative merchant and a League warehouse, and this may provide a possible explanation for the link between these two very similar crosses.

This cross is recorded on the Portable Antiquities Scheme database, Ref: **NMS-06E591**, and has subsequently been disclaimed as Treasure (2019-T379).



Actual size





- 104 An early Medieval gold and emerald stirrup-shaped ring, circa 12th century**, the hoop of D-shaped cross section, the small oval cabochon emerald within pear-shaped collet setting in raised tapering mount, within an octagonal-shaped bezel, the shoulders of reeded channelled design, *ring size M½*.
£2,000-£3,000

This ring was found by a detectorist in East Hampshire.

The ring is recorded on the Portable Antiquities Scheme database, Ref: **HAMP-268707**, and has subsequently been disclaimed as Treasure.

Although referred to as 'stirrup rings', a name given in the 19th century comparing their shape to a horse's stirrup, this form of Medieval ring actually reflects the pointed arch used in the monumental architecture of the Medieval Gothic period. The simple examples reflect the ogive arches utilised in Gothic cathedrals, exemplified by the chevet of St. Denis, evolving into more complex designs, such as this, with polygonal sections.

Literature:

Hindman, S. et al., *Towards an Art History of Medieval Rings: A Private Collection*, (Paul Holberton, London, 2014).



- 105 A 14th century brass stirrup ring**, with a blue glass cabochon imitating sapphire, *ring size P½*.
£100-£120

Found at Riddlesworth, Norfolk, near the Norfolk / Suffolk border, in 2021.



- 106 A Medieval gold ring with vacant setting, 13th-14th century**, the lozenge-shaped bezel with a vacant lozenge/teardrop-shaped stone setting, between stepped shoulders, to a wire shank, in yellow gold, *ring size K*. £1,000-£1,500

This ring was discovered by a detectorist in Hanby, Lincolnshire.

The ring is recorded on the Portable Antiquities Scheme database, Ref: **LIN-1B904C**, and has subsequently been disclaimed as Treasure (ref: 2020-T280).



- 107 A Medieval silver gilt garnet set ring, 14th century and a Medieval buckle**, the ring with rectangular pie-dish bezel, set with a rectangular cabochon garnet, between stepped shoulders, to plain round-section shank; the small buckle of flat circular ring form, the tapered pin with collar, *ring size Q-R, buckle diameter 7mm*. (2) £400-£600



- 108** A late 12th/early 13th century gold ring, the D-shaped hoop with decorated shoulders stamped with repeating lozenge-shaped designs, the rectangular flat bezel finely decorated with a cross pattee clechy (pointed), ring diameter 20.65mm. £4,600-£5,000

This ring has been recorded on the Portable Antiquities Scheme database Ref: **SF-4128F1** and has subsequently been disclaimed as Treasure.

The ring was found on 28th July 2018 near Saxmundham, Suffolk. Since this find, a number of Norman and later silver pennies have been located in the vicinity.

The find spot is close to an Abbey dating from 1182, founded by Ranulf de Glanville, Chief Justician to Henry II, and the nearby church of St Mary's is recorded in the Domesday book. The Abbey was a religious house of White Canons dedicated to St Mary.

Two similar rings in silver have been recorded but none in gold.





109 A Medieval seal intaglio within silver bezel, 12th-13th century, the oval green jasper intaglio carved with a griffin (winged lion) passant, collet set within a surround bearing the inscription '+FRANGE LEGE TEGE' - 'break, read, conceal', in Lombardic capitals, the reverse with chamfered edge and the remains of two shoulders, ring shank now lacking, *dimensions 22 x 21mm*.
£2,000-£2,400

This seal ring was found by a detectorist in Horsham St. Faith, Norfolk.

St Faith is the site of a medieval priory, founded around 1105 in Horsford, but moved to Horsham soon after. Its buildings included a church, a refectory and cloisters. It was dissolved in 1536 and all buildings except the refectory were demolished. The refectory was converted into a house which survives and contains nationally important medieval wall paintings.

The ring is recorded on the Portable Antiquities Scheme database, Ref: **NMS-C7921B**, and has subsequently been disclaimed as Treasure.

Steve Ashley notes on the PAS report: "The stone is cut in imitation of an ancient intaglio, in green jasper which was especially favoured in the Middle Ages".

Martin Henig notes: "*In the High Middle Ages, between the 12th and 14th centuries, ancient gems were frequently re-set for use in personal seal-matrices (secretaria) in order to serve as signets. The fashion, for [...] ancient gems, was continuous throughout the Middle Ages, but gem-seal usage reached its height of popularity during the second half of the 12th century. Consequently, it may be seen as one small aspect of what it is still convenient to call the '12th-century Renaissance', with its intellectual ferment and enhanced interest in the literature and art of Rome and the Classical world.*"

Literature:

Adams, N., et al., *Good Impressions: Image and Authority in Medieval Seals*, (pub. British Museum Press, 2008) - Chapter: *In The Re-use and Copying of Ancient Intaglios set in Medieval Personal Seals, mainly found in England*, by Martin Henig.



Actual size



110 A Medieval gold ring set with a possible toadstone, 14th-16th century, the circular bezel set with a round stone with white cabochon centre within a grey border, the stone collet set, the underside of the bezel with incised flowerhead detail, between trifurcating scrolled shoulders, ring size K. £1,500-£2,000

This ring was discovered in Stinsford in West Dorset.

The ring is recorded on the Portable Antiquities Scheme database, Ref: **SOM-D01838**, and has subsequently been disclaimed as Treasure.

Lapidaries (i.e. texts that describes the physical properties and virtues of precious and semi-precious stones) were very popular in the Middle Ages when belief that gems held various powers was widely held. Included within these lapidaries, were a few non-mineral items and these included crampodine, or 'toadstone'. The '**toadstone**' is round and brownish, and is in fact the palate tooth of a fossilised shark known as *Lepidotus*.

Literary references to toadstones appear from the 12th century, when it was believed that the toad, whose breath was venomous, had within its head a stone which was an antidote to poison. The story relates that the toad should be placed on a red cloth and this would cause him to belch forth the stone from its head - the stone should be quickly whipped away before the toad could attempt to reclaim it.

Charles Oman of the British Museum, referring to toadstones mounted in rings explained: "Extant examples do not date before the middle of the fourteenth century, but belief in their efficacy survived well into the seventeenth century, though descriptions of techniques for testing doubtful specimens suggest the gradual growth of scepticism.

The toadstone was the best known of the substances which were credited with curative or protective powers. It is frequently difficult to identify both the material or the supposed efficacy of some rings which are obviously magical."

Literature:

Oman, C., *British Rings 800-1914*, (B.T. Batsford Ltd, London, 1974)



The harvesting of a toadstone, as illustrated in *The Hortus Sanitatis* (The Garden of Health), a Latin natural history encyclopaedia, published by Jacob Meydenbach in Mainz, Germany in 1491.



- 111 An Elizabethan cardinal's seal ring, 16th-17th century**, the large gilt metal ring with an oval bezel bearing intaglio detail of a male profile, probably a pope wearing the camauro, within a beaded border, the bezel between caryatid shoulders, *ring size approximately U.* £1,000-£1,200

This ring was found at Deerhurst, on the outskirts of Tewkesbury.

St Mary's Priory church, Deerhurst, was built in the 8th century, when Deerhurst was part of the Anglo-Saxon kingdom of Mercia. The church was restored and altered in the 10th century after the Viking invasion of England, and enlarged early in the 13th century and altered again in the 14th and 15th centuries. The church has been described as "an Anglo-Saxon monument of the first order". From the Anglo-Saxon era until 1540, St Mary's was the church of a Benedictine priory. After dissolving the priory the Crown leased it's manor to a George Throckmorton and it remained with his heirs until 1604, when it was sold to Thomas Cassey of Wightfield Manor near Apperley. Deerhurst also contains the 11th-century Odda's Chapel, about 200 yards southwest of the St Mary's, which remained in use until the 16th century.



Actual size



- 112 A Tudor dress hook, 16th century**, of rectangular form, with a spaced bead border, central filigree decoration and flared collar, to hook fitting, *length 23mm.* £60-£80

POSY RINGS

"The posies in your rings, which are always next to the finger, not to be seen of him that holdeth you by the hands, and yet known to you that wear them on your hands" - John Lyly, *Euphues*, 1580.

The name 'posy ring' is derived from the 'posy' or motto usually engraved around the hoop of a gold band ring, and they were produced from the 14th to the 18th centuries, reaching the peak of their popularity in the 17th century when they mostly took the form of a D-section rounded band, plain to the exterior, with the posy inscribed to the inner surface in italic, cursive script.

Posy rings were sometimes given as gifts to friends to mark significant occasions, but their most common use was as gifts of love and betrothal/marriage, with the posy - often a rhyming couplet - having a romantic theme. The repetition of particularly posies indicates that goldsmiths and their customers made use of published compendiums or commonplace books such as the 1658 *'The mysteries of Love or the Art of Wooing'*, or the 1674 *'Love's Garland or posies for rings, handkerchiefs and such pretty tokens as lover's send their loves'*. The more unusual inscriptions perhaps indicating the ability to choose or write a posy would be a demonstration of the literary flair of an educated person. The placing of the posy to the interior of the band makes the posy (and its sentiment) a secret shared only between giver and receiver.



- 113 An 18th century decorated small posy ring**, the gold band decorated to the exterior with a heart clasped between two elaborately cuffed hands to one side, and a heart between two doves to the other, the trefoil leaf foliate detail between, traces of polychrome enamel remaining; the interior inscribed *'I am but a token'* in italic script, with indistinct maker's mark, ring size D. £2,400-£3,000

This ring was discovered by a metal detectorist in Langton Matravers, in Purbeck, Dorset. The ring is recorded on the Portable Antiquities Scheme database, Ref: **DOR-F16002**, and has subsequently been disclaimed as Treasure.



- 114 An 18th century gold posy ring**, the plain gold D-section band inscribed to the interior *'Vertue gaineth glory'*, in italic script, maker's mark 'WC', ring size L. £1,000-£1,200



115 A post-medieval gold posy ring, circa 1650-1730, of heavy gauge, the hoop of D-shaped cross section, engraved to the flat interior with two line inscription in italic script reading '**The eye doth finde the hart doth chuse / Faith doth binde and death doth loose**', maker's mark probably 'DA' within shield-shaped punch, ring size R-S. £2,000-£3,000

The ring is recorded on the Portable Antiquities Scheme database, Ref: **DOR-364BBF**, and has subsequently been disclaimed as Treasure.

Ciorstaidh Hayward Trevarthen notes in the PAS Report:

"This is a somewhat unusual example of a posy ring in having a two-line inscription rather than the more commonly seen single line. For other examples of such double-line inscriptions see BM 1961,1202.93 (Salisbury, circa 1595-1633) and BM 1961,1202.28 (16th or 17th century). In its heaviness, BM 1961,1202.93 resembles 2020 T718. The inscription is not found on any parallels in the British Museum.

A variant of this inscription [The eye doth find, the heart doth choose, and love doth bind till death doth loose] was engraved in a ring made for Thomas Whythorn, court musician in 1569 (David Cressy: *Birth, Marriage, and Death: Ritual, Religion and the Life-Cycle in Tudor and Stuart England*, 1997, 343) demonstrating that long inscriptions do not tie rings to later periods".

Joan Evans (1931, 35) records another variant [Eye doth find, heart doth chose, Faith doth bind, death doth lose] in Edward Brooke's commonplace book of 1605.

"The maker's mark appears to be the initials DA in a shield. There are several London makers with these initials recorded in Jackson (1905) starting in 1689-90 (*ibid* p. 141) through to 1724-25 (*ibid* p. 168), but the later examples are more elaborate than this one. The closest in terms of the shape of the shield and minimal other ornament is that of Josiah Daniel recorded for 1714 – 15 (*ibid* p.159), but other possibilities are Isaac Dalton in 1711-12 (*ibid* p.157) Andrew Dalton in 1709 – 10 (*ibid* p.155) and an unnamed maker in 1689-90 (*ibid* p.141)".

Literature:

Cressy, David, *Birth, Marriage, and Death: Ritual, Religion and the Life-Cycle in Tudor and Stuart England*, (1997)

Evans, J[ohn], *Posy Rings: a Friday evening discourse at the Royal Institution* (March 25 1892)

Evans, J[Joan], *English Posies and Posy Rings* (London 1931)

Jackson, C.J., *English Goldsmiths and Their Marks* (London 1905)

Oman, C., *British Rings 800-1914* (London 1974)



- 116** A 17th century silver gilt posy ring, the plain D-section band inscribed to the interior '**Feare god and love mee**', in italic script, bearing maker's mark 'CW' in rectangular punch, ring size P. £400-£600

This ring was discovered by a metal detectorist in Slimbridge, near Stroud in Gloucestershire.

The ring has been recorded on the Portable Antiquities Scheme database, Ref: **PAS-10F734**, and has subsequently been disclaimed as Treasure. Please note the PAS report records this ring as gold, but it is silver gilt not gold.

Tony Dove notes on the PAS report: "The maker's mark is very similar to one on a ring in the collection of the British Museum (reference 1961,1202.403) which was attributed to one of either 'Charles Walrond, London jeweller, Free. of the London Goldsmiths' Company in 1670 (no further dates known and death unrecorded); or Charles Wise, London jeweller, Free. of the London Goldsmiths' Company in 1682, (no further dates known and death unrecorded)."



- 117** A late 17th century hollow cast gold posy ring, of D-shaped cross section, the ring inscribed to the interior in italic script: '**I fancy none but thee alone**', maker's mark indistinct, ring size J. £600-£800

In early Medieval times, it was common to find hollow cast gold jewellery, made using the lost wax process. This posy ring uses a similar technique, and is unusual to also include an inscription.



- 118** A gold posy ring, circa 1730, of D-shaped cross section, with plain exterior, the interior engraved with the posy '**My love is true to none but you**', with initials 'RW' and maker's mark 'JC', ring size N. £1,600-£2,000

This ring was discovered by a metal detectorist in the village of Priston, near Bath.

The ring is recorded on the Portable Antiquities Scheme database, Ref: **GLO-9E2E1B**, and has subsequently been disclaimed as Treasure.

Judy Rudoe (British Museum) commented for the PAS report, 2021: "The initials 'RW' may be those of the giver of the ring".

Rachel King (British Museum) commented for the PAS report, 2021: "Examples of 'J' in this form are attested for two small workers registered at Goldsmiths' Hall in 1736 and 1769 respectively".

119 A late 19th century gold signet ring, engraved with crest and motto, stamped '18CT', ring size M-N. £600-£800



The crest is from the **von Dadelszen** family with motto 'Per Ardua Surgam', translating as 'Through trials I shall rise'.

This crest, now used by the New Zealand branch of the family, may well have been derived from the German family Stoppel, originating in the early 17th century, and consisting of three golden ears of corn standing upright on a stubble field. In medieval times 'stoppeln' was a common word for raking or collecting field crops. (Stoppel translates as 'stubble' in German). The Stoppels were Lutheran protestants so the three ears could be the symbol of the Lutheran motto "loyal - firm - true".

The first appearance of the Stoppel surname in the Von Dadelszen family appeared with the marriage of Michael David von Dadelszen (1760-1831) to Christina Dorothea Stoppel. Numerous other members of the Stoppel family married into the Von Dadelszen family.

The Von Dadelszen name was first recorded circa 1520 in Stade, a small town 50 miles from Hamburg. Changes occurred to the spelling over the centuries - between 1655-1688 changing from van Dalen to von Dahlern; around 1688, from von Dahlern to von Dadelsen, and in the second half of 18th century, one part of the family changed the name to von Dadelszen.

On 27 January 1860, Edward von Dadelszen is recorded as sailing from Liverpool, bound for Auckland, New Zealand, with his two surviving sons and five daughters, two years after the death of his wife, Mary Jane Evans. The descendants of the New Zealand branch of the family have comprehensively researched the family history from 1520 to the present day (15 generations).

See website: www.knowledgebank.org.nz



120 Of Halley's Comet interest: A 19th century amethyst intaglio ring, the eschutcheon-shaped amethyst carved to depict the profile of a gentleman, possibly Edmond Halley, in a high collar, with a comet passing behind, the gold mount with engraved scroll detailing, bezel dimensions 14 x 11.5mm, ring size N. £300-£500

Halley's Comet, officially designated 1P/Halley, is a short-period comet visible from Earth every 75–76 years and is the only known short-period comet that is regularly visible to the naked eye from Earth. **Edmond Halley** (8th November 1656 - 25th January 1742) was an English astronomer, geophysicist, mathematician, meteorologist, and physicist, and was the second Astronomer Royal. Halley constructed an observatory on Saint Helena and from there he catalogued the southern celestial hemisphere and recorded a transit of Mercury across the sun. Upon his return to England he was made a member of the Royal Society and was granted a degree from the University of Oxford.



This comet's periodic returns to our inner solar system have been observed and recorded by astronomers around the world since at least 240 BC, but it was not until 1705 that Edmond Halley understood that these appearances were reappearances of the same comet, and as a result of this discovery, the comet is now named after Halley.

In August 1835 Halley's comet passed by the earth and observations were made by astronomers across the world made observations, including Struve at Dorpat observatory, and Sir John Herschel, from the Cape of Good Hope. Following the appearance of the comet in 1759 and 1853 the event was commemorated by jewellers.

121 A gold and gem-set fancy-link necklace, the pear-shaped gold beads with spherical spacers to either side, and belcher-link chain connectors, the front suspending a tassel beneath a red-paste and turquoise cluster, indistinct assay marks, length 45cm. £800-£1,200

According to a surface analysis test at GCS, the metal tested as 19 carat gold. Verbal report number 5782-349.



122 A bombé dress ring, set with an oval-cut glass-filled ruby within a surround of brilliant-cut diamonds, the ropetwist mount with broad tapering shoulders inserted with graduated rows of single and brilliant-cut diamonds, total diamond weight approximately 1.35 carats, ring size J. £400-£600

123 A diamond ring, the front set with two rows of alternating brilliant and baguette-cut diamonds, stamped '14k', total diamond weight approximately 1.40 carats, ring size M½. £500-£600



124 A gold bead bracelet, the polished spherical beads to a lozenge-shaped clasp collet-set with turquoise cabochons and red paste highlights, length 23.5cm. £1,000-£1,500


According to a surface analysis test at GCS, the metal tested as 22 carat gold. Verbal report number 5782-348.





125 A gold and enamel bead necklace, the polished spherical beads, measuring approximately 16mm, alternating with similarly-sized beads with ropetwist detailing and polychrome enamel spot decoration, indistinct assay mark, *length 53cm.*
£4,000-£6,000

According to a surface analysis test at GCS, the metal tested as 21 to 22 carat gold. Verbal report number 5782-347.




126 A gold pendant by Kurt Weiss, the circular pendant with textured bark effect, suspended from an associated cable-link chain, pendant with UK hallmark, maker's mark, chain stamped '9K', pendant length 31mm. £500-£600

127 A gem set dress ring by Margaret Barnaby, circa 1970, of abstract naturalistic design, set with a circular-cut chrysoberyl to the centre and a polished ruby cabochon to the side, with chased and repoussé detailing throughout, signed 'BARNABY', numbered '93122', stamped '18K', ring size M. £400-£500



Margaret Barnaby is an American jeweller and artist. Her work is inspired by the natural world and her jewellery designs tend to be highly sculptural and abstract. Barnaby is particularly well known for her chasing and repoussé techniques.



128 A hardstone pendant, circa 1970, the polished hardstone enclosed within a cage of textured tendrils, suspended from a spiga-link chain, pendant length 46mm, chain length 49.5cm. £200-£300



129 An agate brooch by Deakin & Francis, 1970, the agate geode within an undulating 9ct gold surround of textured design, maker's mark, Birmingham hallmark, length 50mm. £300-£500



130 A 9ct gold crystal brooch, 1968, the central oblong mineral specimen, possibly a micocrystalline Franckeite mass, interspersed with transparent quartz crystals, set within an abstract surround of radiating textured hoop petals, London hallmark, indistinct maker's mark, possibly 'JG', length 53mm. £300-£500

- 131 An 18ct gold sapphire and diamond pendant/brooch on detachable chain,** the pendant of textured tiered design, claw set with round-cut sapphires and brilliant-cut diamonds, the reverse with twin prong hinged fastener and pendant loop, together with a chain en suite, of textured figure-of-eight links, to reeded barrel clasp, and with suspensory loop attachment, both stamped with maker's mark 'CJ', the pendant hallmarked for London 1976, the chain London 1977, total diamond weight approximately 0.35 carat, pendant length 48mm, chain length 54cm. £1,000-£1,500



- 132 An 18ct gold brooch by Harris & Maisey, 1967,** of abstract textured form, maker's mark 'H&M' in double lozenge, London hallmark, length 58mm. £500-£600



- 133 An 18ct gold ruby and diamond brooch, 1966,** the bicolour brooch of textured organic design, accented with three flowerheads set with marquise-cut rubies and brilliant-cut diamonds, the surround similarly set, London hallmark, maker's mark 'JHL', length 70mm. £300-£500

- 134 A sapphire and diamond brooch, circa 1970,** of whorl design, composed of a two row crescent of graduated circular-cut sapphires, the inner scroll set with graduated diamonds, with textured front detailing, mounted in 14ct gold, UK import mark for 1970, maker's mark 'LJI', length 36mm. £300-£500





136 An opal and diamond cluster pendant, the oval opal cabochon within a starburst surround set with brilliant-cut diamonds, suspended from a faceted cable-link chain, total diamond weight approximately 2.10 carats, pendant length 7.2cm, chain length 40cm. £400-£600



135 A diamond starburst pendant, set throughout with brilliant-cut diamonds, suspended from a faceted cable-link chain, total diamond weight approximately 2.75 carats, chain length 47cm, pendant length 37mm. £2,000-£3,000



137 A diamond dress ring, the articulated band claw-set throughout with graduated brilliant-cut diamonds, stamped 750, total diamond weight approximately 4.70 carats, ring size K. £1,500-£2,000



138 An opal and diamond cluster ring, 1977, the oval opal cabochon within a surround of brilliant-cut diamonds, London hallmark, maker's mark 'RDP', total diamond weight approximately 1.45 carats, ring size M. £600-£800

139 A pair of opal and diamond earrings, circa 1982, each set with an oval opal cabochon within a surround of brilliant-cut diamonds, mounted in 18ct gold, London import mark, sponsor's mark 'HOE' for House of Euroved London, total diamond weight approximately 2.60 carats, length 28mm. £600-£800

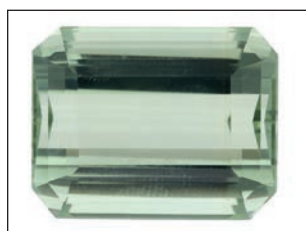


140 An opal and diamond bangle, the hinged brick-link pattern bangle set with an oval opal cabochon and brilliant-cut diamond cluster, stamped '750', total diamond weight approximately 1.25 carats, inner diameter 5.7cm. £400-£600



141 An emerald and sapphire suite, 1989, comprising earrings, ring and pendant, each of cluster design, set with a step or pear-cut emerald within a surround of circular-cut sapphires, the earrings with detachable drops, mounted in 18ct gold, London hallmarks, maker's mark 'CoLJ', pendant length 30mm, earring length 6.5cm, ring size M. (3) £2,000-£3,000

142 An unmounted green beryl, octagonal step-cut, dimensions 30 x 25 x 15mm, weighing 77.04 carats, cased by Meng, Rio. £1,000-£2,000



Actual size



De Vroomen

Born in Holland during the Second World War, Leo de Vroomen was the youngest of eight siblings. His family were tulip farmers but from an early age Leo dreamed of a different life. Following his apprenticeship in The Hague and qualifying as a Master Goldsmith in Switzerland, he came to London in 1965. It was whilst lecturing at the Central School of Art and Design that he met his future wife - the artist and designer Ginnie. They married and in 1976 together founded De Vroomen Design Ltd. The company rapidly expanded and the distinctive De Vroomen style gained international reputation. During these years, Ginnie's painting became increasingly important and in 1997, she had her first solo show in Chelsea. De Vroomen went on to be the winners of the coveted De Beers Diamonds International Award in 1974, winning a second award in 1986.

In 1991, the Goldsmiths' Hall held a retrospective exhibition of their work, marking 20 years of the partnership between Leo and Ginnie. A second exhibition at Goldsmiths' Hall took place in the summer of 2017, to celebrate 50 years of De Vroomen jewellery, the jewellery exhibited to the backdrop of Ginnie's exquisite paintings. Over the years, De Vroomen have evolved their distinctive style, using strong sculptural forms modelled in gold and set with gemstones, enamel and pearls, their minimal use of diamonds showcasing the bold coloured stones, cloisonné and champlévé enamels.

143 A pair of 18ct gold and tanzanite ear clips by Leo de Vroomen, 2008, the domed tanzanite cabochons in two-tiered gold collet settings, post and clip fittings, with maker's mark 'L.D.V', London hallmark, length 26mm, depth approximately 10mm. £1,000-£1,500



144 An 18ct gold and tanzanite ring by Leo De Vroomen, 2014, the heavy gold ring mount collet set with a sugarloaf cabochon-cut tanzanite, to a slightly tapered band, signed 'de Vroomen' and with maker's mark 'L.D.V', London hallmark, ring size N (sizing beads). £1,000-£1,500

145 A pair of cultured mabé pearl ear clips by Leo de Vroomen, 1983, of cushion-shaped outline, the cultured pearls collet set within a blue enamel border, on hinged clip fittings, maker's marks 'L.D.V', mounted in 18ct gold, London hallmark, length 25mm. £400-£500



146 A pair of enamel and gem-set cufflinks by De Vroomen, 1996, each barrel-shaped plaque set with an oval-cut sapphire within an orange-coloured surround of starburst design, the borders set with a graduated row of brilliant-cut diamonds, to T-bar terminals, mounted in 18ct gold, signed 'de Vroomen', maker's mark, London hallmark, plaque length 20mm. £1,500-£2,000

147 A bicolour fancy-link bracelet, comprised of bold yellow and rose gold links, stamped '750', with Italian assay mark, length 20.5cm. £3,000-£4,000



148 A pair of sapphire and diamond earrings, the oval-cut sapphires collet set within a stirrup surround of brilliant-cut diamonds, mounted in 9ct yellow gold, UK hallmark, length 11mm. £200-£300



149 A pair of 18ct gold ear clips, retailed by Annabel Jones, the bi-coloured cuffs with reeded detailing, retailer's mark, London import mark for 1981, length 20mm. £300-£500



150 A pair of diamond 'Amare' cufflinks by Boodles, each set with a brilliant-cut diamond in a rubover setting, within a slightly raised surround with a satin finish and polished highlights to the corners, to T-bar terminals, mounted in 18ct gold, signed 'Boodles' and 'Amare', London hallmark for 1998, total diamond weight approximately 0.90 carat, plaque diameter 17mm. £1,200-£1,500



151 A pair of gem-set cufflinks by Asprey, each stylised knot set with a princess-cut diamond within a square wraparound surround set with calibré-cut sapphires and emeralds, to baton terminals with sapphire cabochons to either end, with cable-link chain connectors, mounted in 18ct gold, London hallmark for 1996, maker's mark 'APLC', cased, total diamond weight approximately 0.50 carat, plaque diameter 12mm. £800-£1,200



152 A tricolour sapphire collar necklace, comprising three oval mixed-cut yellow, blue, and pink sapphires, collet set to an articulated plain polished collar, stamped '750', length approximately 34.4cm. £3,000-£3,500



- 153 A synthetic sapphire and diamond cluster ring**, the circular-cut synthetic sapphire within a surround of old brilliant and single-cut diamonds, stamped '18CT', *total diamond weight approximately 0.25 carat, ring size M.* £200-£300



- 154 A sapphire and diamond three stone ring**, set with a circular-cut sapphire with a brilliant-cut diamond to either side, stamped '18CT', *total diamond weight approximately 0.30 carat, ring size approximately Q.* £400-£600



- 155 A three stone diamond ring**, claw set with three brilliant-cut diamonds in raised crossover claw setting, 9ct gold mounted, *total diamond weight approximately 1 carat, ring size Q.* £300-£500



- 156 A sapphire and diamond ring retailed by Annabel Jones**, the undulating front set with circular-cut sapphires and brilliant-cut diamonds, mounted in 18ct gold, retailer's mark, London import mark for 1979, *total diamond weight approximately 0.40 carat, ring size M.* £400-£600



- 157 A sapphire and diamond ring**, the step-cut sapphire bezel set between two princess-cut diamonds, stamped '750', inner band engraved '15.2.80 Franz', *ring size N.* £300-£400



- 158** A pair of sapphire and diamond cluster ear studs, the oval-cut sapphires in raised claw settings, within a surround of brilliant-cut diamonds, white and yellow precious metal mounted, *total diamond weight approximately 0.72 carat, length 13mm.* £400-£600



- 159** A pair of heart-shaped diamond ear studs, pavé set with brilliant-cut diamonds, *length 9.7mm.* £200-£300



- 160** A pair of sapphire and diamond cluster ear studs, each heart set with a trellis of brilliant-cut diamonds within a surround of channel-set sapphires, stamped '750', with post and hinged clip fittings, *length 12.5mm.* £300-£400



- 161** A sapphire and diamond cluster bar brooch, the flared bar centred with an oval mixed-cut sapphire within a surround of old-cut diamonds, *total diamond weight approximately 0.48 carat, length 5.6cm.* £400-£600

- 162** A sapphire and diamond cluster ring, the oval-cut sapphire within a rectangular surround of brilliant-cut diamonds, *total diamond weight approximately 1.00 carat, ring size M.* £2,000-£3,000



163 A pair of ear clips by Hermès, of wrythen hoop design, with hinged clip fittings, scratched numerals '49.573', French assay marks, signed 'HERMÈS' 'PARIS', with lozenge sponsor's mark, length 25mm. £400-£500



164 A pair of diamond ear clips by Ben Rosenfeld, circa 1970, each textured bombé hoop set with a row of single-cut diamonds, mounted in 18ct gold, partial UK hallmark, maker's mark 'BRL', total diamond weight approximately 0.25 carat, length 22mm. £500-£600

165 A pair of ear clips, each designed as a bicoloured scroll, stamped '750', Italian assay mark, length 25mm. £300-£500



166 A fancy-link cuff, the sprung bracelet of woven design with circular-cut white paste highlights, stamped '750', Italian assay marks, inner diameter 6cm. £1,000-£1,500



167 A **fringe necklace**, of continuous graduating entwined trefoil design, with ropetwist finish throughout, clasp stamped '750', length 42.5cm. £2,400-£3,000

According to a surface analysis test at GCS, the metal tested as 18ct - 19ct gold. Verbal report number 5782-676.

168 A novelty brooch, realistically modelled as a bicoloured horse's head, with a circular-cut gem-set eye, stamped '585' and 'ITALY', length 33mm. £200-£300



169 A pair of Indian gold and enamel earrings, each openwork earring of fringed chandelier design, with red and green enamel detailing, stamped '22CT', 'KDM', numbered '64', length 5.7cm. £800-£1,200

According to a surface analysis test at GCS, the metal tested as 22 carat gold. Verbal report number 5782-342.

170 Four gold and enamel bangles, each decorated with varicoloured enamel flowerheads, inner diameter 7.3cm. (4) £5,000-£7,000

According to a surface analysis test of one bangle at GCS, the metal tested as 22 carat gold. Verbal report number 5782-346.



- 171** A gold and green hardstone necklace, formed as a series of alternating openwork filigrée boules and polished aventurine quartz beads, with fancy-link chain connectors between, the front terminating in a drop, length 90cm. £700-£900

According to a surface analysis test at GCS, the metal tested as 18 to 19 carat gold. Verbal report number 5782-344.



- 172** Three gem-set bangles, each formed as a continuous series of vari-coloured oval-cut synthetic gemstones and pastes, in rubover settings, stamped '750', inner diameter 6.6cm. (3)

£4,000-£6,000





173 An amethyst and diamond cluster ring, the oval-cut amethyst claw set within a surround of brilliant-cut diamonds, amethyst measurements 25.5 x 19.5 x 3.2mm, total diamond weight approximately 0.75 carat, ring size J-K. **£1,000-£1,500**



174 An amethyst dress ring, claw-set with an octagonal step-cut amethyst to a scroll work mount with fanned shoulders, to a trifurcated band, ring size K. **£400-£600**



175 An amethyst and diamond dress ring, circa 1970, the bicoloured ring set with a square mixed-cut amethyst in a wirework basket, to a wraparound and crossover shank set with brilliant-cut diamonds, total diamond weight approximately 1.85 carats, ring size L (sizing beads). **£1,000-£1,500**



176 A tanzanite and diamond bombé dress ring, the pierced mount inlaid with pear-cut tanzanites with brilliant-cut diamond highlights, ring size P. **£300-£400**

- 177** A smoky quartz ring, the large step-cut smoky quartz with ropetwist detailing and flowerhead decoration to the mount, between trifurcated shoulders, quartz measurements 28 x 20 x 13.5mm, ring size L. £600-£800



- 178** A citrine dress ring, the step-cut citrine claw set between shoulders with foliate decoration, stamped '9CT', ring size O. £120-£150



- 180** A moss agate ring by David Scott Walker, 1999, the polished oval agate plaque in a rubover setting between broad tapering shoulders, mounted in 9ct gold, maker's mark, Sheffield hallmark, ring size O. £200-£300



- 179** A 9ct white gold hinged bangle, of flattened twin row wavy design, European Convention marks, with safety clips to both sides of clasp, inner width 5.9cm. £160-£200

- 181** A Danish silver and aventurine quartz bracelet designed by Karl Gustav Hansen for Hans Hansen, circa 1970, the polished quartz domes set within broad cylindrical collars with circular link connectors between, signed 'Hans Hansen', 'Denmark', '925S', London import mark for 1970, sponsor's mark for Danish Silver Designs Ltd., length 19cm. £400-£600

Hans Hansen (1884-1940) opened a goldsmith shop and smithy in Kolding, Denmark about 1906. By the 1920s, Hansen was producing his own line based on his and **H.F. Gross'** designs. Initially the company produced flatware. Once that was successful, they started designing and making jewellery. The first pieces were designed by Hansen himself around 1931 but the production of jewellery really began in earnest in 1932 with a collection designed by Hansen's son **Karl Gustav Hansen**, (born 1914). After his father's death in 1940, at just 56 years of age, Karl Gustav took over the Hans Hansen silversmithy. In 1992 the firm joined with the **Georg Jensen** company.





182 A blue topaz and diamond suite by Erté, comprising a ring, pendant and ear pendants, each with an oval mixed-cut blue topaz collet set to a reeded fan shaped surmount, set with a series of brilliant-cut diamonds, the pendant and ear pendants with polished tassel decoration, each signed, numbered and stamped '14K', the pendant suspended from an associated curb-link chain, stamped '9ct', ring size J. £1,000-£1,500

183 A turquoise tortoise brooch, the shell mounted with turquoise cabochons of various sizes, with textured finish to the body, the head set with a single ruby eye, to a double pin brooch fitting, stamped '750' with Italian assay marks, length 35mm, height approximately 20mm. £400-£500



184 A turquoise pendant necklace, the irregularly-shaped turquoise matrix pendant claw set within a foxtail collet, suspended from a matching chain, stamped '750' with Italian assay marks, chain length 75cm, pendant length 45mm. £800-£1,000



185 An opal and diamond bangle and ring suite, the hinged bangle inlaid with graduated opal panels with a row of tension-set brilliant-cut diamonds to the centre, the ring en suite, ring stamped '14k', ring size Q, bangle inner diameter 5.8cm. £1,200-£1,800



186 A turquoise necklace, 1988, the belcher-link 9ct gold chain spectacle-set throughout with turquoise cabochons, London hallmark, length 46.4cm. £300-£500





187 A French gem-set combination necklace, circa 1970, the triple strand of polished ruby beads and cultured pearls leading to a detachable frontispiece, set with a pear-shaped turquoise cabochon within a tiered wraparound surround set with brilliant-cut diamonds, the clasp further set with a turquoise bead, French assay marks, maker's mark 'Sté E', total diamond weight approximately 3.25 carats, length 45cm, frontispiece length 32mm. **£3,000-£5,000**

The lozenge shaped maker's mark, 'Sté E' featuring a snowflake between, is seen on jewellery retailed by both Van Cleef & Arpels and Mauboussin amongst others.



189 A late Victorian gold garnet, pearl and gem set fringe necklace, composed of a graduating fringe of scrollwork drops, alternately set with heart-shaped almandine garnets between oval mixed-cut aquamarines, all collet mounted, beneath pearl and pink stone highlights, to a belcher-link back chain and slim barrel clasp, the tongue stamped '15ct', length 40.8cm. £1,600-£2,000



188 A late 19th century locket and a rosette necklace, the silver oval-shaped locket applied to both sides with gold cagework depicting a scrolling jardinière, all within a chased foliate border, opening to reveal a glazed compartment, the cover finely engraved with scrolling foliage and inscribed 'CON ME / SEMPRE', ('With Me Always'), suspended from a later unassociated rosette chain, chain stamped '750' and with Italian assay mark, pendant length 6cm, chain length 68cm. £800-£1,200



190 A late 19th century amethyst and pearl brooch, the lozenge-shaped brooch centred with a square-cut amethyst, with bouton-shaped half-pearls to the cardinal points, between foliate borders with rose-cut diamond highlights, mounted in silver and gold, width 32mm. £200-£300



191 A late 19th century Russian enamel egg pendant, the silver egg decorated with polychrome cloisonné enamel, Russian assay mark, 84 standard, length 14mm. £100-£150



192 A 19th century diamond stickpin, modelled as a gloved hand pavé set with rose-cut diamonds and holding a similarly-set bombé teardrop, the base inset with a single principal brilliant-cut diamond, mounted in silver and gold, cased, length 6.5cm. £500-£700



193 A late 19th century Renaissance Revival enamel and gem-set pendant by Carlo Giuliano, the circular pendant of openwork design, set with a reddish-brown zircon, centred within a cluster of circular-cut chrysoberyls of golden tint, black and white enamel decoration throughout and seed pearl highlights to the outer border, mounted in gold, maker's mark 'CG', length 40mm. £600-£800

194 A 19th century gold mounted micro-mosaic pendant, of circular form centred with a micro-mosaic panel depicting a swan swimming amidst reeds, the gold collet mount applied with borders of ropetwist and repeating guilloche detail, the reverse with indistinct stamped mark to the centre, on later applied pendant mount stamped '9ct', diameter 27mm. £300-£400



195 An Etruscan style brooch, the annular brooch terminating to either side in a ram's head mask, with bead and ropetwist detailing throughout, stamped '18K', diameter 31mm. £400-£500



196 A late 19th century diamond and agate bar brooch, with engraved geometric decoration and set with two rectangular-cut agates, with rose-cut diamond panels to either end, mounted in gold, length 5.3cm. £100-£120



197 A diamond 'TOD' cross pendant on chain by Theo Fennell, 1999, the 18ct gold cross set with a brilliant-cut diamond, suspended from a fine fox-link chain, pendant and chain with UK hallmark, maker's mark, *pendant length 29mm, chain length 45cm.* £500-£600

198 A ruby and diamond crossover ring by Mozafarian, the bicoloured ring of crossover design, set with a circular-cut ruby and brilliant-cut diamond, signed 'MOZAFARIAN', stamped '585', import mark for London 1980, *ring size L½.* £400-£600



199 A ruby and diamond ring by Mozafarian, the bicoloured ring with a bombé centre and filed decoration, inlaid with a brilliant-cut diamond between tapered shoulders each inlaid with a pear-cut ruby, signed 'MOZAFARIAN', stamped '750' and '950', Italian assay mark, import mark for London 1988, *ring size P.* £300-£500

200 An Indian ruby collar necklace, comprised of crescent-shaped links within a wire frame, each link set with three graduated calibré-cut rubies, *length approximately 30cm.* £500-£700





201 A choker necklace, by LORIS, the graduated flattened curb-link chain signed 'Loris', stamped '750', with Italian assay mark, length 40.5cm. £1,400-£1,800

202 A multi-strand bracelet, composed of eleven flat ropetwist chains with textured finish, to a domed clasp of overlaid foliate decoration above a blue enamel ground, with single-cut diamond highlights, stamped '750' with Italian assay mark, length 19.4cm. £2,600-£3,000





203 A pair of garnet ear pendants and a garnet brooch, converted from late 18th / early 19th century jewels, the earrings of chandelier design and set with vari-shaped garnets in closed-back settings, the brooch similarly-set, one garnet deficient, earring length 45mm, brooch diameter 50mm. (2)

£300-£500

204 Three pairs of garnet earrings, converted from 19th century jewels, each of cluster design, closed-back settings throughout, one garnet deficient, one paste replacement, largest diameter 25mm. £200-£300



205 A garnet hinged bangle, set with vari-cut stones comprising foil-backed table-cut garnets in closed-back settings, and further round-cut and rose-cut stones, in pieced scrollwork setting, the hinge to the reverse, two colour precious metal mounted, inner width 53mm. £300-£400

206 A mid 19th century garnet and seed pearl bracelet, set with a circular garnet cabochon within a surround set with half-pearls and applied ropetwist decoration, with glazed locket compartment verso, to a mesh-link bracelet, mounted in gold, length 17.3cm.

£600-£800





207 A 19th century garnet rivière necklace and brooch/pendant, set throughout with oval-cut garnets, the openwork brooch/pendant set with circular and pear-cut garnets, in pinched collet closed-back settings, mounted in gold, together with five similarly-set 19th century jewels to include a brooch, composite, later brooch fitting, necklace length 41cm, brooch/pendant length 50mm. (5) £1,000-£1,500

Partially illustrated



208 A synthetic ruby and diamond pendant, the pear-cut synthetic ruby within a figure-of-eight pendant mount with a brilliant-cut diamond highlight, suspended from a belcher-link chain, stamped '750', pendant length 27mm. £300-£400

209 A diamond ring, the broad tapered band with an applied heart pavé set with brilliant-cut diamonds, stamped '585', ring size M½. £200-£300



210 A fire opal and diamond ring, the oval fire opal cabochon claw set between trios of brilliant-cut diamonds, stamped 'pt 900', ring size I½. £400-£600

211 A diamond band ring, the broad polished band inlaid to the front with brilliant-cut diamonds, stamped '750', ring size L. £500-£600



212 A ruby and diamond bracelet, the articulated bracelet composed of domed panels set with a row of brilliant-cut diamonds between radiant-cut ruby borders, each link with an oval ruby cabochon to either side, length 17cm.

£2,000-£3,000



www.dnw.co.uk

All lots are illustrated on our website and are subject to buyers' premium at 24% (+VAT where applicable)



213 A flowerhead brooch, circa 1950, the bloomed flower head centred with four calibr -cut sapphires, the reverse stamped '750', with Italian assay mark, length approximately 50mm.
£300-£400



214 A bee brooch, realistically modelled, with textured finish, the underside of one wing stamped 'DANFRERE 14K COPYRIGHT', length 21mm.
£120-£150

215 An opal spider bar brooch, circa 1900, the thorax and abdomen collet set with opal cabochons, red gem-set eyes, mounted in gold, replacement pin, length 5.5cm.
£80-£120



216 A ruby set flower brooch, the highly polished brooch with moveable petals enclosing ruby mounted stamens, the stem with realistically modelled leaves, yellow precious metal, one leaf bearing maker's mark 'C' in shield-shaped punch, length 6.3cm.
£500-£600





217 A pair of diamond ear pendants, the articulated drops of pierced and flared design, set throughout with brilliant and baguette-cut diamonds, stamped '750', total diamond weight 2.69 carats, length 5.5cm. **£1,800-£2,200**



218 A diamond crescent brooch, the full crescent with scalloped outline and claw set with slightly graduated brilliant-cut diamonds, mounted in 18ct white gold, Sheffield hallmark for 1977, total diamond weight approximately 3.25 carats, diameter 32mm. **£2,000-£2,400**



219 A diamond ring, of crossover design, the foliate sprays grain set throughout with trios of brilliant-cut diamonds, white precious metal mounted, total diamond weight approximately 0.27 carat, ring size P. **£300-£400**



220 An early 20th century diamond brooch, the knife-edge hoop claw-set with old brilliant-cut diamonds, mounted in platinum and gold, total diamond weight approximately 1.50 carats, diameter 27mm. **£600-£800**

221 A diamond hinged bangle, the bombé frontispiece pavé set with brilliant-cut diamonds, stamped '750', total diamond weight approximately 4.70 carats, inner diameter 52.5mm. **£2,000-£3,000**



222 A mid 20th century gem-set brooch and ear clip suite by **Vourakis**, of bicolour snowflake design, set throughout with circular-cut sapphires and brilliant-cut diamonds, the ear clips en suite, signed 'Vourakis', stamped 'K18', total diamond weight approximately 2.60 carats, brooch length 42mm, ear clip length 26mm. £3,000-£4,000

The Greek jewellers Vourakis are a third generation family business, based in Athens, and founded in 1926.





223 A 'Moon and Star' diamond dress ring by Adler, 2000, composed of five tapered bands, joined to the reverse, the front set throughout with brilliant-cut diamonds in a variety of heart, star, crescent moon, and round collets, signed 'adler', 18ct white gold, London hallmark, ring size P. **£1,000-£1,500**

Adler are a fifth generation family jewellers. In 1886, Swiss-born Jacques Adler, after training as a jeweller in Vienna, opened a workshop in Istanbul, bringing together Eastern and European influences. The company continued as a family business over the decades. In 1970, the founder's grandsons Franklin and Carlo Adler returned to their family's historical roots, opening a boutique in Geneva.

224 An 18ct gold chalcedony and diamond ring by Dior, the anchor-link band centred with a blue chalcedony cabochon, flanked either side by two brilliant-cut diamonds, signed 'Dior' with serial number 'E1058', the reverse stamped with French assay and maker's mark, band depth 16mm, ring size P. **£800-£1,200**



225 An aquamarine ring by H. Stern, set with an oval-cut aquamarine, stamped '750', maker's mark, ring size M **£700-£900**

H. Stern was founded in Brazil in 1945 by Hans Stern. Initially dealing in precious stones they later moved to design jewellery. The firm is still family owned and stores located in Latin America, United States, Europe & Asia, although the headquarters and centre of manufacture is in Rio de Janeiro, Brazil. In 1949 H. Stern opened a store on the Rio de Janeiro docks, the point of arrival for international passengers on cruise ships.

The company is focused on creating and promoting an international interest in the finest semi-precious coloured stones, such as aquamarine, tourmaline, etc., many of which are sourced 'locally', in Brazil.



226 A mid 20th century aquamarine and diamond brooch, the rectangular step-cut aquamarine claw set between ribbon bow shoulders composed of brilliant, marquise and baguette-cut diamonds, length 6.1cm. £1,600-£2,000



227 A diamond single stone ring, the brilliant-cut diamond, weighing 1.02 carats, in claw setting between tapered shoulders, mounted in platinum, Birmingham hallmark for 2003, ring size N. £1,500-£2,000

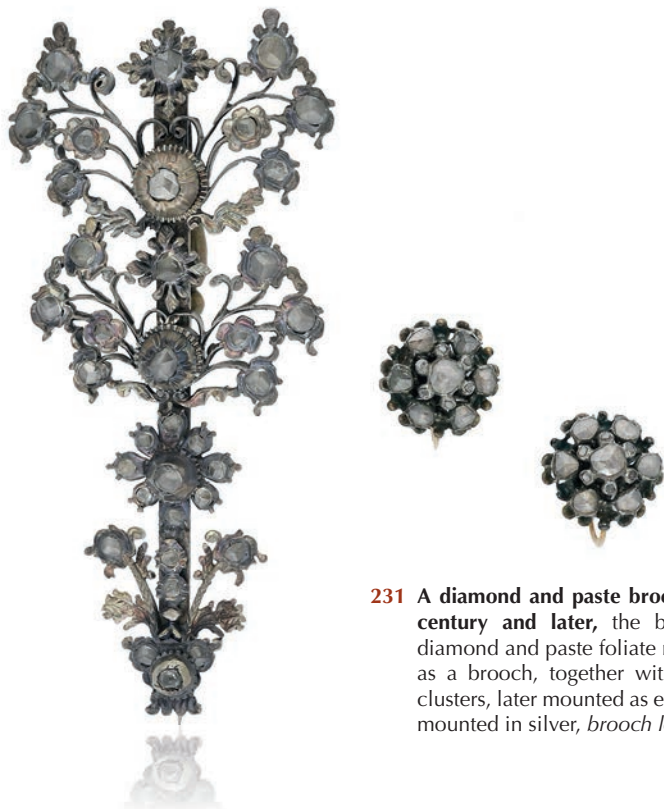


228 A diamond ring, the slightly tapered band tension-set with five principal brilliant-cut diamonds, with four pairs of smaller similarly-cut diamonds behind, London hallmark for 2006, total principal diamond weight approximately 1.25 carats, ring size W. £1,200-£1,500

229 A tanzanite and diamond dress ring, 2007, the pear-shaped tanzanite, weighing 13.91 carats, mounted in a four-claw setting, each claw inlaid with a brilliant-cut diamond, between similarly-set diamond shoulders, mounted in 18ct white gold, London hallmark, maker's mark 'N.C.K' for Nick Kellett, total diamond weight 0.29 carat, ring size L. £1,600-£2,000



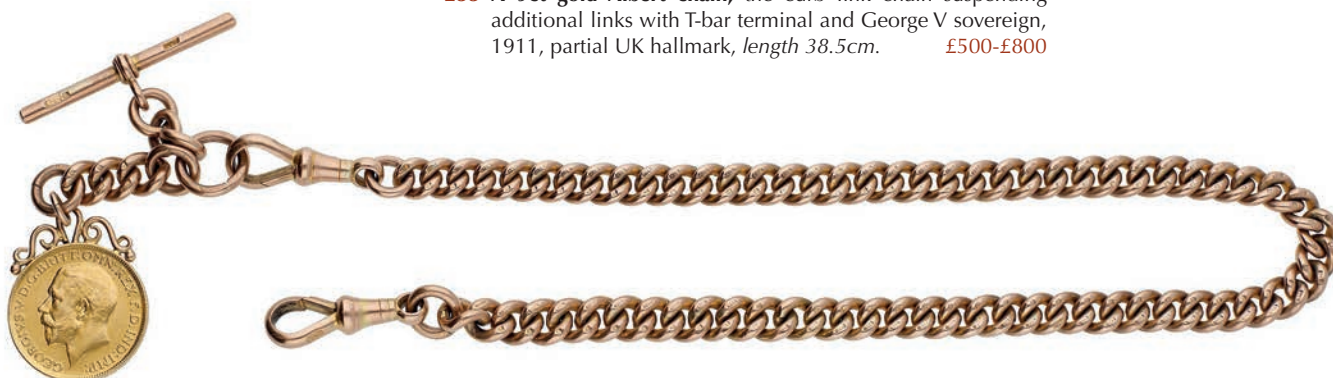
230 A pair of 19th century paste ear pendants, formed as an articulated row of cushion and circular-cut pastes terminating in a pear-shaped drop, mounted in silver and gold, foiled and closed-back settings, (composite and later later hook fittings), length 5cm. £300-£400



231 A diamond and paste brooch and cluster earrings, 18th century and later, the brooch composed of rose-cut diamond and paste foliate motifs, later vertically mounted as a brooch, together with a pair of rose-cut diamond clusters, later mounted as earrings with screw fittings, both mounted in silver, brooch length 9.2cm, earrings 16mm. £500-£600



232 An Art Nouveau enamel and sapphire brooch, circa 1900, designed as three foliate motifs with pale green enamel leaves and sapphire cabochon buds, mounted in gold, length 46mm. £100-£150



233 A 9ct gold Albert chain, the curb link chain suspending additional links with T-bar terminal and George V sovereign, 1911, partial UK hallmark, length 38.5cm. £500-£800



- 234** A Victorian gold enamel and pearl serpent necklace, circa 1860, the graduated snake-link chain terminating in a serpent head clasp, decorated in turquoise coloured enamel, and inset with a row of graduating pearls and with cabochon garnet set eyes, suspending a heart-shaped locket pendant of conforming design, glazed locket verso, together with a hand painted presentation note, reading 'To / Susannah / from / her / Godmother / 1937', later fitted case, length 37cm. £1,500-£2,000



- 235** A 19th century Austrian gem-set pendant, the yellow-green agate carved to depict a lion mask, with rose-cut diamond eyes and a collet-set pink gemstone stud between its teeth, the gold mount formed as a coiled serpent with garnet eyes, closed-back setting, Austrian assay marks, maker's mark 'H.I.' possibly for Heinrich Infeld, pendant length including bale 30mm. £200-£300

- 236** A late 19th century Art Nouveau diamond ring, set with an old brilliant-cut diamond encircled by a serpent extending to form the figural gold mount designed as two female nudes, diamond weight approximately 0.25 carat, ring size Q. £400-£600

For similar rings by Maison Vever, entitled 'Chased gold rings for Gentlemen', see:

Vever, Henri (trans. Purcell, Katherine), *French Jewelry of the Nineteenth Century*, (Thames & Hudson, London, 2001), p. 1047.



- 237** A Victorian gold serpent bangle, the double hinged bangle modelled as a coiled serpent with blue enamelled head and cabochon garnet eyes, mounted with a graduated line of old-cut diamonds in silver collets, inner dimensions 5.3 x 4.6mm. £600-£800



Calderoni's was established in 1840 in Milan's Via della Lupa, and in 1870 opened in Piazza Duoma, and became the official supplier to the House of Savoy, their customers including nobility and the royal houses of Europe. In 1942, Calderoni moved to Via Montenapoleone, symbol and centre of Italian luxury in the European capital of fashion, design and jewellery, winning the prestigious Diamonds International Awards four times. It remains Calderoni's flagship store in Italy to this day and from 2006 formed part of the Damiani group.



238 A pair of Italian diamond earrings, the Art Deco style drops of geometric design, set throughout with old brilliant and rose-cut diamonds, cased by Calderoni, total diamond weight approximately 0.70 carat, length 38mm. £1,000-£1,200



239 An Italian diamond pendant, the Art Deco style drop of openwork geometric design set throughout with old brilliant and single-cut diamonds, suspended from an 18ct white gold fancy-link chain, Italian assay mark, UK import mark for 1968, cased by Calderoni, total diamond weight approximately 1.00 carat, chain length 42cm. £600-£800



240 A diamond single stone ring, the old brilliant-cut diamond claw set between single-cut diamond shoulders, stamped 'PLAT', principal diamond approximately 0.70 carat, ring size N. £400-£600

241 An early 20th century diamond and ruby ring, set with three old brilliant-cut diamonds with calibré-cut ruby highlights between, mounted in platinum, ring size L½. £500-£700



242 A diamond single stone ring, the transitional-cut diamond claw set between single-cut diamond shoulders, stamped '18CT WG PT', diamond approximately 0.55 carat, ring size R. £300-£500

243 An Art Deco sapphire and diamond ring, circa 1920, set with an oval-cut sapphire within a surround of rose-cut diamonds, between similarly-set tiered and tapering shoulders, mounted in platinum, sapphire weight approximately 2.00 carats, ring size L. £2,400-£3,000

Accompanied by a report from GCS stating that the sapphire is of Sri Lankan origin with no indications of heating. Report number 5782-353, dated 26 January 2022.





244 A diamond target brooch/pendant, circa 1890, the tiered cluster set throughout with old brilliant-cut diamonds, mounted in silver and gold, suspended from an unassociated box-link chain, bale and brooch fitting detachable, total diamond weight approximately 6.25 carats, diameter 25mm. £2,400-£3,000

245 A French Art Deco diamond and synthetic sapphire ring, circa 1940, the shaped ring inlaid with an old brilliant-cut diamond with a triangular-cut synthetic sapphire to either side, with scrollwork detailing to the gallery and shoulders, mounted in gold, French assay mark, total diamond weight approximately 0.25 carat, ring size N½. £500-£700



246 A diamond three stone ring, the three old brilliant-cut diamonds claw set between crossover shoulders, stamped '18CT', total diamond weight approximately 1.05 carats, ring size S. £400-£600

247 A diamond five stone ring, claw set with a graduated row of old brilliant-cut diamonds, stamped 'PLATINUM', total diamond weight approximately 1.15 carats, ring size U. £600-£800



248 An Art Deco sapphire and diamond bracelet, circa 1930, the pierced frontispiece millegrain set with old brilliant-cut diamonds and calibré-cut sapphire highlights, to a later expandable bracelet, mounted in platinum, length 17cm. £1,500-£2,000



249 A diamond necklace, the articulated collar set throughout with chevrons of brilliant-cut diamonds, stamped 'pt950', total diamond weight approximately 15.00 carats, length 41cm. £4,000-£6,000



250 A diamond single stone ring, the brilliant-cut diamond in a raised claw setting between bifurcated crossover shoulders, stamped '18CT', diamond weight approximately 1.00 carat, ring size K-L. £1,500-£2,000

251 A diamond dress ring, the rectangular plaque set with four rows of brilliant-cut diamonds, between pierced tapering shoulders, total diamond weight approximately 1.30 carats, ring size M. £800-£1,000



252 An early 20th century opal and diamond ring, the oval opal cabochon within a surround of brilliant-cut diamonds, mounted in platinum and gold, stamped 'PLAT' and '18CT', total diamond weight approximately 1.00 carat, ring size N. £600-£800

253 A diamond ring, set with two rows of brilliant-cut diamonds, ring size R. £100-£150



254 An opal triplet dress ring, the oval composite stone in twinned claw mount, between trifurcated shoulders, ring size P. £300-£400

255 An Arts & Crafts star sapphire and pearl pendant, circa 1900, the oval sapphire cabochon weighing 63.29 carats set within a gold mount with trefoil shaped claws and with a ropetwist border, suspending a fringe of three baroque-shaped pearl drops each within a wirework cage setting, the pendant suspended from twin belcher-link chains, with blister pearl connector, to a long back chain, clasp stamped '9C', partial hallmark, fitted case signed 'G. Parkin 27, Sandhill, Newcastle-on-Tyne', *pendant length (from connector pearl) 68mm.* £6,000-£8,000

Accompanied by a Report from The Gem & Pearl Laboratory, No. 20789, dated 19 November 2021 confirming the natural star sapphire is of Sri Lankan origin with no evidence of heat treatment.





256 A late 19th century ruby and diamond ring, the three rectangular-cut rubies spaced by six rose-cut diamonds, to a scrollwork gallery setting, mounted in gold, hallmarks rubbed, ring size O. £400-£600

257 Two diamond rings, the first claw set with a brilliant-cut diamond, to a slightly tapered band, the second channel set with a row of brilliant-cut diamonds, both stamped '14K', single stone diamond weight approximately 0.50 carat, ring sizes L and K½ respectively. (2) £300-£400



258 Two ruby eternity rings, both channel set with square and rectangular-cut rubies, one ruby deficient, ring sizes M and N respectively. £300-£500

259 A diamond pendant, formed as the Arabic symbol for God, stamped '18C', total diamond weight approximately 0.30 carat, length 17mm. £300-£500



260 A cultured pearl and diamond necklace, the graduated strand of cultured pearls to an Art Deco clasp, circa 1930, set with old brilliant-cut diamonds, mounted in platinum, length 58.9cm. £400-£600





- 261 A ruby and diamond necklace, 1979**, set with an alternating series of pear-cut rubies and brilliant-cut diamonds, leading to a similarly-set cluster drop of chandelier design, suspended from a cable-link chain, mounted in 18ct gold, London hallmark, maker's mark 'HOE' for House of Euroved London, total diamond weight approximately 4.70 carats, length 37.5cm. **£1,500-£2,000**

According to a verbal report from GCS, the pear-cut rubies are of Thai origin, with no indications of heating. Verbal report number 5782-790.

- 262 A ruby and diamond double target ring**, the two old-cut diamonds bordered by calibr -rubies, mounted in plain deep collet mounts, within a crossover setting, diamond weights approximately 2.20 and 1.60 carats, ring size H. **£5,000-£6,000**





263 A diamond Trinity ring by Cartier, composed of three interlocking bands each set throughout with brilliant-cut diamonds, mounted in 18ct gold, signed 'Cartier', numbered C69919, total diamond weight approximately 2.70 carats, ring size L½. £2,400-£3,000

264 A pair of gem-set ear clips by Cartier, circa 1960, the textured gold sprays set with circular-cut emeralds, sapphires, rubies and brilliant-cut diamond highlights, signed 'Cartier Paris', French assay marks, numbered '03155', cased, length 22mm. £3,000-£5,000



265 A mid 20th century ruby, emerald and diamond ring by Cartier, composed of three bombé hoops pavé-set with brilliant-cut diamonds, each highlighted with a circular-cut ruby or emerald, to a reeded hoop, mounted in platinum, signed 'Cartier Paris', French assay marks, maker's mark 'SCA', numbered 012794, cased, total diamond weight approximately 5.00 carats, ring size L.
£5,000-£7,000

The jeweller and designer Jeanne Toussaint was appointed Director of Fine Jewellery at Cartier in 1933. Under her direction designs became more three-dimensional and sculptural; often oversized and colourful, the jewels brought a playfulness not seen in the structural and geometric designs of the Art Deco. In particular, it was her exploration of unusual cocktail rings that was celebrated globally in luxury fashion magazines of the time. In 1947 the cover of Harper's Bazaar featured four bombé Cartier rings and heralded this 'new altitudinous dimension for a ring and the hand that wears it'. These bold cocktail rings became iconic of the era and continue to feature in Cartier collections today.





266 A jade brooch, the pierced panel carved to depict a bird amidst foliage, closed-back setting, (jade untested), length 33mm. £300-£400

267 An emerald and diamond dress ring and earrings, horizontally set with three rows of marquise-cut emeralds with brilliant-cut diamond highlights, the earrings of stylised spray design, similarly set with marquise-cut emeralds and faceted white stones, stamped '585', earring length 19mm, ring size P. (2) £300-£400



268 A jade ring, the oval cabochon in a rubover setting between broad tapering shoulders bright-cut engraved with a phoenix and Chinese dragon, indistinct stamp, (jade untested), ring size S. £300-£400

269 A water opal pendant, the irregularly shaped polished water opal in a three-claw setting, pendant length 39mm. £300-£500

Acquired by the vendor in Mexico.



270 An opal bracelet, the frontspiece alternately set with three graduated oval opal cabochons and four circular-cut white gemstones, to a plain track-link bracelet, frontspiece length 65mm £100-£150



271 A diamond single stone ring, the brilliant-cut diamond, weighing 2.61 carats, in a six-claw setting, to tapered knife-edge shoulders, *ring size N.* £6,000-£8,000

272 A Colombian emerald ring, the oval emerald cabochon in a satin finished tapered mount, stamped '750', *emerald measurements 13.5 x 10.6 x 7.2mm, ring size K.* £1,800-£2,200

According to a verbal report from GCS, the emerald is of Colombian origin. Verbal report number 5782-354.





273 A diamond collar necklace, the front composed of uniform diamond clusters, the back section of continuous open diamond hoops, set throughout with brilliant-cut diamonds, millegrain edged, stamped '750', total diamond weight approximately 6.20 carats, length 42.5cm. £2,800-£3,200





274 A diamond dress ring, the brilliant-cut diamond within a hexagonal surround, the bombé mount formed as panels of similarly-cut diamonds, stamped '18K', *principal diamond weight approximately 0.75 carat, remaining total diamond weight approximately 1.60 carats, ring size M.*

£1,600-£2,000



275 A pair of ruby and diamond cluster ear studs, the pierced clusters millegrain set with brilliant-cut diamonds and circular-cut rubies, stamped '750', *total diamond weight approximately 0.80 carat, diameter 13mm.* £800-£1,000



276 A pair of diamond set star-shaped ear studs, each set throughout with brilliant-cut diamonds, yellow precious metal mounted, on post fittings, *diameter 9mm.* £220-£300

277 A diamond bangle, the broad cuff of pierced foliate design, set throughout with brilliant-cut diamonds, *inner diameter 53mm.* £2,000-£3,000





278 A ruby and diamond necklace and bracelet suite, 1981, the necklace set throughout with ruby cabochons and spaced by geometric-shaped links set with clusters of ruby cabochons and brilliant-cut diamonds, the front suspending a similarly-set cascade drop, mounted in 18ct gold, the bracelet en suite, maker's mark 'HOE' for House of Euroved London, London hallmarks, necklace length 43.5cm, bracelet length 18cm. (2)
£2,600-£3,000

279 A ruby and diamond cuff, 1980, the articulated strap formed of lozenge-shaped links set with ruby cabochons, alternating with links set with clusters of similarly-cut rubies and brilliant-cut diamonds, mounted in 18ct gold, maker's mark 'HOE' for House of Euroved London, London hallmark, *total diamond weight approximately 15.00 carats, length 20cm, width 3.6cm.* £4,000-£6,000





280 A mother-of-pearl flowerhead pendant, the carved mother-of-pearl petals centred with an oval-cut yellow gemstone, stamped '750', length 46mm.
£200-£300



281 A pair of natural pearl and diamond cluster ear studs, the pearls of approximately 8.4mm diameter, each bordered by claw set old-mine cut diamonds, mounted on post screw thread fittings, total diamond weight approximately 1.30 carats, diameter 13mm.
£3,000-£4,000

Accompanied by a Report from GCS confirming the pearls are of natural saltwater origin with no indications of treatment. Report number 5782-355, dated 26 January 2022.

282 A cultured pearl necklace with diamond clasp, the double strand of cultured pearls (broken) to a diamond cluster clasp, the pearl diameters measuring approximately 8mm, the principle brilliant-cut diamond weighing 1.49 carats.
£2,000-£3,000



283 An early 20th century gold and diamond set buckle by Cartier, circa 1902, the bowed oval frame with inner twin C-scrolls set with rose-cut diamonds, the chape signed 'Cartier Paris', stamped '622', with French eagle's head assay mark and lozenge maker's mark, the chape engraved to the reverse with the number '279' in italics, contained in fitted gilt tooled leatherette case, the cover stamped 'M de L.C.', the interior cream silk signed 'CARTIER PARIS 13 RUE DE LA PAIX / LONDON 4 NEW BURLINGTON STREET', dimensions 72.5 x 51mm. £2,000-£3,000

Pierre Cartier (1878-1964) opened the first Cartier boutique in London at 4, New Burlington Street, in 1902, to coincide with the coronation of King Edward VII. In 1909, under the direction of 25-year-old **Jacques**, (1884-1941), the youngest of the three Cartier brothers, it was decided to relocate the London business around the corner to its present location at 175-176 New Bond Street.



Kat Florence

Kat Florence was brought up in Canada, the wild landscapes and oceans of her childhood becoming Kat's inspiration in her jewellery designs. She studied biology, and gained a Masters in Education, travelling to Bangkok to teach in a school using the innovative Reggio Emilia method of education - which blended science and art to help pupils better understand their environment. In Bangkok she learned her craft from diamond setters, gold carvers and designers, combining tradition and leading-edge techniques in her work, leading to her developing her own signature brand, individually sourcing the finest diamonds and gemstones for her creations.

284 An 18ct gold diamond half hoop ring by Kat Florence, the D-shaped hoop pavé-set with brilliant-cut diamonds, the shank slightly pointed to the reverse, lasered signature, D0.87 18K', Birmingham hallmark, cased, *total diamond weight 0.87 carat, ring size M-N (sizing spring)*. **£1,200-£1,500**

Accompanied by a report card from Kat Florence stating that the diamonds are D colour, Flawless clarity. Report number 3870QF.



Kat Florence™

"The jewellery we are wearing expresses
our soul, our identity and our
innermost desires..."

18K White Gold Ring with White Diamonds and Broadflash Lightning Ridge Black Opal



285 A black opal and diamond cluster ring by Kat Florence, the pear-shaped opal cabochon within a tiered surround of brilliant-cut diamonds, the shoulders decorated with arched panels of similarly-cut diamonds, lasered facsimile signature, 'OP4.13 D1.48 18K', opal measures approximately 13.4 x 9.9 x 5.4mm, ring size M-0 (sizing spring). £5,000-£7,000

Accompanied by a report from The Gemological Testing Laboratory at The Gem and Jewelry Institute of Thailand stating that the opal is natural, with no indications of artificial colour modification. Report number 1510150010004, dated 27 October 2015.

Accompanied by original printed design sheet by Kat Florence. Reference number 3012SZ.



286 An Art Deco diamond double-clip brooch, circa 1930, set throughout with single, brilliant and old brilliant-cut diamonds, the design incorporating volutes and scrolls, with original detachable framework, *total diamond weight approximately 6.50 carats, length 7cm.* £2,600-£3,600



287 An Art Deco diamond bracelet, circa 1930, the openwork links of geometric design with pierced palmette decoration, set throughout with old brilliant and rose-cut diamonds, mounted in platinum and white gold, composite, *three principal diamond weights approximately 1.05, 1.30 and 1.10 carats, remaining total diamond weight approximately 6.25 carats, length 21cm.* £8,000-£10,000



288 A ruby and diamond pendant on chain, the oval cluster pendant of scalloped outline, set with cabochon rubies within borders of brilliant-cut diamonds, beneath diamond lozenge-shaped surmount and circular ruby and diamond cluster above, white precious metal mounted, on bale, with later 18ct white gold box-link chain, *pendant length 5.8cm* (including bale). **£800-£1,000**

289 A diamond dress ring, the multi-row tapered band set with brilliant-cut diamonds in claw and raised collet settings, *ring size M*. **£500-£600**



290 A rubellite and diamond dress ring by Mary Carmen, the oval mixed-cut rubellite in twin claw settings, between diamond set shoulders, each collet set with a trio of brilliant-cut diamonds, *total diamond weight approximately 0.25 carat, ring size R*. **£800-£1,000**

Accompanied by a report card from Mary Carmen stating that the rubellite weighs approximately 10 carats. Report number SB-209, dated 7 December 2000.



291 A pair of diamond and ruby ear pendants, the surmounts set with a ruby cabochon and single-cut diamond cluster suspending detachable drops of foliate design, each formed as an articulated series of ruby cabochons and single and brilliant-cut diamonds, *total diamond weight approximately 2.20 carats, length 5.8cm*. **£800-£1,000**





292 A ruby and diamond necklace retailed by Carrington & Co., circa 1963, the articulated necklace set throughout with a continuous row of circular-cut rubies with brilliant-cut diamonds to either side, the front leading to a looped drop, mounted in 18ct white gold, London import mark, sponsor's mark 'RDP', cased by Carrington & Co. Ltd., total diamond weight approximately 2.30 carats, length 40cm.

£3,000-£4,000

Sidersky & Son

Sidersky & Son were the oldest family-run jewellery manufacturing company in South Africa, with more than 100 years of continuous trading, from 1902-2006. Adolph Sidersky, the founder, was educated and trained in Leipzig, Germany, as an engraver, setter and jeweller. He emigrated to South Africa in the late 1800s, participating in the Boer War on the side of the Boers. After the war in 1902, he opened his own manufacturing jewellery studio in Surrey House, Rissik Street, Johannesburg. In 1928, his son Max joined the business, taking over the company when his father died in 1959. The studio specialised in the mounting and setting of gemstones in platinum or gold, gaining a reputation for excellence in their craftsmanship - indeed commissions in the early 1950s included those from a South Rhodesian firm for jewellery that was presented to the young Princess Elizabeth, and later to the Queen Mother and Princess Margaret. In 1973 Sidersky's opened a retail shop in Sandtown City. In the late 1950s, Max Sidersky was active as the chairman of the South African Manufacturing Jewellers Association, with a progressive attitude to the development of jewellery manufacturing, in 1958 arguing the case for introducing a standardised jewellery hallmarking system - which was to take another 55 years before legislation established a South African hallmarking system in 2013.

The company was sold in 2006.

293 A diamond dress ring by Sidersky, circa 1950, set with three brilliant-cut diamonds, within a pear-shaped surround of baguette and brilliant-cut diamonds, to a reeded wirework gallery and hoop, cased by Sidersky, Johannesburg. *three principal diamond weights (unmounted) 1.25, 1.20 and 1.20 carats, ring size S.* £6,000-£8,000

The vendor commissioned the ring from Sidersky's, providing the three principal diamonds.



294 A diamond dress ring by Sidersky, circa 1960, the bombé ring formed as a series of scattered batons, interspersed with old brilliant and brilliant-cut diamonds with calibré-cut diamond shards, to a reeded hoop, cased by 'Sidersky, Johannesburg', *two principal diamonds approximately 1.00 and 1.05 carats, remaining total diamond weight approximately 2.40 carats, ring size U.* £4,000-£6,000

The vendor commissioned the ring from Sidersky's.



295 A Colombian emerald and diamond necklace, the octagonal-cut emerald, weighing approximately 15 carats, in a four claw setting within a cluster surround of marquise-cut diamonds, the detachable pendant suspended from a diamond collar necklace set with two rows of brilliant-cut diamonds, to a back chain of round polished links, stamped '750' and '18k', maker's mark, *total diamond weight approximately 12.00 carats, pendant length 35mm, necklace length 43cm.* **£12,000-£15,000**

Accompanied by a report from GCS stating that the emerald is of Colombian origin with indications of moderate to significant amount of oil in fissures. Report number 5782-318, dated 18 January 2022.



296 Three assorted brooches, the first of open hoop design, inset with trillion and marquise-cut garnets, yellow precious metal, reverse stamped '585', an opal set scrollwork brooch, yellow precious metal, and a 19th century gilt metal agate set brooch, *first brooch diameter 41.5mm.* £400-£500

Partially illustrated



297 A small collection of jewellery, to include a pair of single stone diamond ear studs, a double row cultured pearl bracelet with a ruby and diamond clasp, a diamond and cultured pearl bar brooch, stamped '750', and a pair of 9ct gold cufflinks with engine-turned decoration, *bracelet length 19cm.* (4) £600-£800

298 A collection of antique jewellery, to include a seed pearl crescent brooch, circa 1900, a late 19th century garnet and diamond brooch, a lady's gold and enamel fob watch, a late 19th century shell cameo brooch, etc., *various sizes and lengths (qty).* £400-£600

299 A small collection of antique jewellery, comprising gold and gem-set stick pins and bar brooches, a pair of 9ct gold cufflinks and a pair of silver cufflinks, *various lengths (qty).* £150-£200

300 A small collection of jewellery, to include a malachite elephant with single-cut diamond eyes, a gold knot brooch, circa 1900, set with seed pearls, a pair of cufflinks, etc., *various lengths (qty).* £150-£200



For full illustrations of mixed lots,
see web images at www.dnw.co.uk

Watches



301 Richard Dickenson. A silver pair cased verge watch, No. 173, circa 1705.

Movement: gilded full plate, verge escapement, decoratively pierced and engraved balance cock, fusee and chain, Egyptian pillars.

Dial: silver champlévé dial, Roman numerals, outer Arabic minutes, beetle and poker hands.

Case: silver inner and outer, both with maker's mark WL surmounted by a crown.

Signed: movement signed Richard Dickenson, dial signed Dickenso, Leverpool (sic).

Dimensions: diameter 57mm. £1,200-£1,800



302 Benjamin Taylor. A gilt metal verge watch, No. 1728, circa 1780.

Movement: gilded full plate, verge escapement, pierced and engraved balance cock, fusee and chain.

Dial: white enamel, Roman numerals.

Case: gilt metal, maker's mark WW.

Signed: Benjn Taylor. London, No. 1728.

Dimensions: diameter 45mm. £80-£100

303 Trenton Record Dreadnought Watch Factories. A gold open-faced keyless watch, circa 1926.

Movement: lever escapement, 7 jewels.

Dial: white enamel, Roman numerals, subsidiary seconds.

Case: 9ct gold, gold cuvette, lacking glass, London hallmark for 1926, maker's mark L.A, no. 334744.

Signed: movement.

Dimensions: diameter 49mm.

Accessories: 9ct gold chain. £440-£600



304 Henry W. Harrison. A gold open-faced watch together with a gold plated watch, 1870.

Movement: three quarter plate, lever escapement.

Dial: gilt, engraved floral design to the centre, Roman numerals, engine-turned chapter ring.

Case: 18ct gold, gold cuvette, back finely engraved with cartouche to the centre, Chester hallmark for 1870, maker's mark RO.

Signed: Henry W. Harrison, Liverpool. No. 21372.

Dimensions: diameter 40mm.

Together with a small gold plated keyless watch signed New England, U.S.A £500-£600



Provenance: From the property of Beatrice de Cardi, to be sold on behalf of the Society of Antiquaries.

305 J. W. Benson. A gold half-hunting cased keyless watch, circa 1929.
Movement: gilded, lever escapement, 17 jewels.
Dial: white enamel, Roman numerals, subsidiary seconds.
Case: 9ct gold, gold cuvette with inscription, aperture to the cover with blue enamel Roman numerals, Birmingham hallmark for 1929, no. 458472.
Signed: dial and movement, case stamped A.L.D.
Dimensions: diameter 49mm.
Accessories: J. W. Benson Ltd. presentation case. £300-£400



306 Audemars & Cie. A gold open-faced keyless watch, circa 1925.
Movement: lever escapement.
Dial: silvered, linear design to centre, Arabic numerals, subsidiary seconds.
Case: 18ct gold, hinged back, London import mark for 1925.
Signed: movement.
Dimensions: diameter 46mm. £300-£500

307 Swiss. A lady's gold wristwatch, circa 1926.
Movement: manual winding, cylinder escapement, 8 jewels.
Dial: gilt, engine-turned, Arabic numerals within silvered discs.
Case: 9ct gold, Birmingham hallmark for 1926, stamped A.L.D. Cachecase PAT. 269722, gold plated bracelet.
Signed: unsigned.
Dimensions: diameter 24.5mm, bracelet circumference approximately 170mm. £80-£120



308 William Comyns & Sons. A silver and tortoiseshell mounted boudoir timepiece, 1914.
Movement: manual winding, lever escapement.
Dial: white enamel, Roman numerals.
Case: silver mounted with tortoiseshell panels and floral inlay and initial to the top, London hallmark for 1914.
Signed: movement stamped 'MADE IN FRANCE.'
Dimensions: height 7cm. £200-£300

Please note tortoiseshell (hawksbill turtle) is covered by CITES legislation and may be subject to import/export and trade restrictions and USA Fish and Wildlife regulations. Please be aware that it is the buyer's responsibility to arrange any CITES export license for their purchases. More information can be found at www.cites.org.

309 Thomas Russell & Son. A gold cushion-form wristwatch, circa 1926.

Movement: manual winding, 17 jewels.

Dial: white enamel, Arabic numerals, subsidiary seconds.

Case: 9ct gold, snap-on back, Birmingham hallmark for 1926, no. 359506.

Signed: dial and movement, Dennison case.

Dimensions: length 30.5mm, width 30.5mm.

£180-£250



310 Swiss. An early lady's gold wristwatch with sprung bracelet, circa 1912.

Movement: manual winding.

Dial: gilt, engine-turned, Arabic numerals within silvered discs.

Case: 9ct, hinged back, London import mark for 1912, maker's mark G.S., 9ct gold sprung bracelet.

Signed: unsigned.

Dimensions: diameter 27mm, bracelet circumference approximately 180mm.

£120-£180

311 Swiss. A lady's gold wristwatch, circa 1930.

Movement: manual winding, 15 jewels.

Dial: silvered, engine-turned.

Case: 9ct gold, hinged back, wire lugs, no. 3669, British Made, maker's mark A. S.

Signed: unsigned.

Dimensions: diameter 21mm. £70-£100



312 Le Roy & Fils. A lady's gold and diamond-set wristwatch, circa 1910 and later.

Movement: later, manual winding, 21 jewels.

Dial: translucent red enamel over engine-turned ground, Roman numerals.

Case: gold, bezel set with old brilliant-cut diamonds.

Signed: cuvette signed Le Roy & Fils, movement signed Accurist.

Dimensions: diameter 23mm.

£700-£900

313 Omega. A gold wristwatch, circa 1965.

Movement: cal. 269, manual winding, 17 jewels, no. 21595427.

Dial: silvered, applied baton indexes, subsidiary seconds.

Case: 9ct gold, snap-on back, Birmingham hallmark for 1965.

Signed: case, dial and movement.

Dimensions: diameter 34mm.

£200-£300



314 Zetol. A gold plated wristwatch, circa 1940.

Movement: manual winding.

Dial: silvered, applied Arabic and dagger indexes, luminescent hands, subsidiary seconds

Case: gold plated, snap-on back.

Signed: dial.

Dimensions: diameter 30mm.

£40-£60

315 Longines. A gold automatic tonneau wristwatch with date, Admiral, circa 1970.

Movement: automatic.

Dial: silvered, applied baton indexes, date aperture, centre seconds.

Case: 9ct gold, monobloc one piece case.

Signed: case, dial and movement.

Dimensions: length including lugs 34mm, width 33.5mm.

£200-£300



316 Omega. A gold cushion-form wristwatch, circa 1974.

Movement: cal. 625, manual winding, 17 jewels, no. 38457165.

Dial: gilt, applied baton indexes.

Case: 9ct gold, snap-on back, London import mark for 1975, gold plated buckle.

Signed: case, dial, movement and buckle.

Dimensions: length including lugs 34.5mm, width 32.5mm.

£150-£200

317 Swiss. A lady's white gold and diamond-set cocktail watch, circa 1930.

Movement: manual winding.

Dial: silvered, Arabic numerals.

Case: white gold, intricate pierced design set with diamonds, hinged lugs, snap-on back, sapphire cabochon-set winding crown.

Signed: unsigned.

Dimensions: length 46.5mm, width 13.5mm.

£300-£400



318 Jaeger LeCoultre: A lady's white gold and diamond-set bracelet watch, circa 1950.

Movement: manual winding.

Dial: silvered, applied dagger and dot indexes.

Case: 18ct white gold, diamond-set bezel, back secured by two screws, back wound, no. 874416 A, integrated articulated bracelet highlighted with diamonds.

Signed: case, dial and movement.

Dimensions: diameter 13.5mm, bracelet circumference approximately 165mm.

£1,500-£2,000

319 Herodia. A lady's gold wristwatch with bracelet, circa 1950.

Movement: manual winding.

Dial: silvered, applied baton indexes, subsidiary seconds.

Case: 18ct gold, snap-on back, fancy moulded lugs, no. 2203 3, hollow link gold bracelet.

Signed: dial and movement.

Dimensions: diameter 22mm, bracelet circumference approximately 170mm.

£300-£400

Provenance: From the property of Beatrice de Cardi, to be sold on behalf of the Society of Antiquaries.



320 Renown. A gold, diamond and synthetic ruby cocktail watch, circa 1955.

Movement: manual winding, 15 jewels.

Dial: Arabic numerals.

Case: 9ct gold, stepped stylised design highlighted with single-cut diamond and synthetic rubies, snap-on back, London import mark for 1955.

Signed: dial.

Dimensions: length including lugs 56mm, width 14mm, bracelet circumference approximately 145mm.

£600-£800

321 Cartier. An Art Deco style octagonal gilt brass, jasper and mother-of-pearl desk timepiece, circa 1970.

Movement: quartz.

Dial: radiating panels of mother-of-pearl.

Case: gilt brass, jasper bezel and plinth, Oriental-inspired design to the base, no. 200583.

Signed: dial and case.

Dimensions: height 23cm, width 14.4cm.

Accessories: fitted presentation case. £2,400-£3,000



Cartier is a name that evokes splendour and luxury. Throughout Cartier's history, its designers have created precious works of art for their wealthy and elite clients around the world.

In the 70's and 80's, Cartier looked to its immense archive to reinvent its great past through pieces that bought back to life the spirit of the Art Deco period. The Cartier workshops produced one-of-a-kind pendules and pendulettes during this period using traditional materials such as rock crystal, mother-of-pearl, jasper and onyx. For those who could afford them, they were symbols of wealth, elegance and success.

For a similar example of the present lot see: J. Barracca, G. Negretti, F. Nencini, *Le Temps de Cartier*, 1989, p.308.

322 Omega. A stainless steel wristwatch with two-tone dial, Ref. 2903-61, Genève, circa 1961.

Movement: cal. 268, manual winding, 17 jewels.

Dial: silvered two-tone, applied Arabic and dagger indexes, subsidiary seconds.

Case: stainless steel, snap-on back.

Signed: case, dial and movement.

Dimensions: diameter 34mm.

£400-£500



323 Jaeger-LeCoultre. A stainless steel wristwatch, Ref. 2285, circa 1960.

Movement: cal. K800/C, manual winding, no. 1572277.

Dial: silvered, applied baton indexes, centre seconds.

Case: stainless steel, snap-on back, no. 894625.

Signed: case, dial and movement.

Dimensions: diameter 33.5mm.

£100-£150

324 Longines. A gold plated wristwatch, circa 1955.

Movement: cal. 12.68Z, manual winding, 17 jewels, no. 9604694.

Dial: silvered, applied Arabic and dagger indexes, subsidiary seconds.

Case: gold plated, snap-on back.

Signed: dial and movement.

Dimensions: diameter 34.5mm.

£100-£200



325 Cyma. A gold square wristwatch, Ref. 7249, Cymaflex, circa 1950.

Movement: cal. R.404KQ, manual winding, 17 jewels, no. 116252.

Dial: silvered, applied Arabic and stylised baton indexes, subsidiary seconds.

Case: 18ct gold, snap-on back.

Signed: case, dial and movement.

Dimensions: length including lugs 36.5mm, width 29mm.

Accessories: Cyma presentation case . £150-£200

326 Jules Jürgensen. A white gold rectangular wristwatch, circa 1930.

Movement: manual winding, 17 jewels, no. 217411.

Dial: silvered, applied Arabic Breguet numerals.

Case: 18ct white gold, hinged curved back, no. 217411.

Signed: case, dial and movement.

Dimensions: length including lugs 38mm, width 22.5mm.

£800-£1,000.

Jules Jürgensen was founded in Denmark in 1740 by Jürgen Jürgensen. His son Urban took over the company in 1811 after his father's death. The Jürgensen name is synonymous with high quality precision watchmaking to this day.



Actual size



327 Geneva Sport Watch Co., A stainless steel wristwatch, circa 1950.

Movement: manual winding, 17 jewels.

Dial: silvered, two-tone, textured centre, milled chapter ring, Arabic and triangular indexes, centre seconds.

Case: stainless steel, screw-down back.

Signed: dial and movement.

Dimensions: diameter 32mm.

£40-£60



328 Roamer. A lady's stainless steel wristwatch, Ref. 2100.002

5100, Super Sport, circa 1950.

Movement: manual winding, 17 jewels.

Dial: silvered, applied Arabic numerals, centre seconds.

Case: stainless steel, screw-down back, no. 55002.

Signed: dial.

Dimensions: diameter 24mm.

£40-£60

329 Girard Perregaux. A lady's stainless steel automatic wristwatch, Gyromatic, circa 1960.

Movement: automatic, 25 jewels, no. 9409454.

Dial: silvered, applied baton indexes, centre seconds.

Case: stainless steel, screw-down back, no. 74800907.

Signed: case, dial and movement.

Dimensions: diameter 19.5mm.

£40-£60



330 Zenith. A gold rectangular wristwatch with date, circa 1990.

Movement: cal. 11.6, quartz, 7 jewels.

Dial: two-tone gilt, aperture for date.

Case: 18ct gold, snap-on back.

Signed: case, dial, movement signed Zenith/Movado.

Dimensions: length including lugs 37mm, width 27.5mm.

£200-£300

- 331 Jaeger-le-Coultre. A gold wristwatch, circa 1961.**
Movement: cal. K478/c, manual winding, no. 1443517.
Dial: gilt, applied Arabic and dagger indexes, centre seconds.
Case: 9ct gold, snap-on back, flared lugs, London hallmark for 1961, no. 11535.
Signed: dial and movement, case stamped DTE.
Dimensions: diameter 35mm. £300-£400



- 332 Jaeger-LeCoultre. A gold wristwatch, circa 1968.**
Movement: cal. K818/10, manual winding, no. 805873
Dial: silvered, baton indexes.
Case: 9ct gold, snap-on back, Edinburgh hallmark for 1968, stamped BWC, London Made, no. 35622.
Signed: dial and movement.
Dimensions: diameter 33mm. £150-£200

- 333 Rotary. A gold rectangular wristwatch, circa 1960.**
Movement: cal. 435, manual winding, 17 jewels.
Dial: silvered, baton indexes, subsidiary seconds.
Case: 9ct gold, snap-on back, Glasgow import mark for 1960.
Signed: dial.
Dimensions: length including lugs 37mm, width 25mm. £60-£80



- 334 Omega. A stainless steel automatic wristwatch with date, Ref. 168.004, Constellation, circa 1962.**
Movement: cal. 561, automatic, 24 jewels, no. 19419856.
Dial: silvered, applied baton indexes, aperture for date, centre seconds.
Case: stainless steel, screw-down back, associated stainless steel bracelet.
Signed: case, dial and movement.
Dimensions: diameter 35.5mm. £100-£200

335 Rolex. A stainless steel automatic wristwatch, Ref. 5500, Air-King, Super-Precision, circa 1961.
Movement: cal. 1560, automatic, 26 jewels.
Dial: silvered, baton indexes.
Case: stainless steel Oyster case, screw-down back and crown.
Signed: case, dial and movement.
Dimensions: diameter 34mm. £700-£900



336 Tudor. A gold wristwatch, Royal, circa 1956.
Movement: manual winding, 17 jewels.
Dial: silvered, two-tone, wave design to chapter ring, applied Arabic and dagger indexes, centre seconds.
Case: 9ct gold, snap-on back, faceted lugs, Edinburgh hallmark for 1956, no. 1332.
Signed: case, dial and movement.
Dimensions: diameter 32mm. £400-£500

337 Tudor. A gold wristwatch, circa 1957.
Movement: manual winding, 15 jewels.
Dial: silvered, chevron pattern, applied Arabic and baton indexes, centre seconds.
Case: 9ct gold, snap-on back, Birmingham hallmark for 1957, no. 12856 832844.
Signed: dial and movement, Dennison case.
Dimensions: diameter 30.5mm. £100-£200



338 Rolex. A stainless steel wristwatch with date and bracelet, Ref. 6694, Oyster-Date Precision, circa 1976.
Movement: cal. 1225, manual winding, 17 jewels.
Dial: black, applied baton indexes, magnified date aperture, centre seconds.
Case: stainless steel Oyster case, screw-down crown and back, no. 4240343, stainless steel Oyster bracelet.
Signed: case, dial, movement and bracelet.
Dimensions: diameter 36mm, bracelet circumference approximately 175mm. £1,000-£1,500

339 Rolex. A stainless steel automatic wristwatch with bracelet, Ref. 1016, Explorer, circa 1969.

Movement: cal. 1570, automatic, 26 jewels.

Dial: black, triangle, baton and Arabic numerals, centre seconds.

Case: stainless steel Oyster case, screw-down crown and back, no. 2168723, stainless steel Oyster bracelet.

Signed: case, dial, movement and bracelet.

Dimensions: diameter 36mm, bracelet circumference approximately 195mm.
£4,000-£6,000



340 Longines. A gold automatic wristwatch, Ref. 6120, circa 1945.

Movement: automatic, no. 7881701.

Dial: silvered, applied Arabic numerals, engine-turned subsidiary seconds.

Case: 18ct gold, snap-on back.

Signed: case, dial and movement.

Dimensions: diameter 35mm.

£400-£600



341 Jaeger-LeCoultre. A gold wristwatch, circa 1955.

Movement: cal. P469/1C, manual winding.

Dial: silvered, applied dagger and triangular indexes, engine-turned subsidiary seconds.

Case: 18ct gold, snap-on back with engraved inscription.

Signed: dial and movement.

Dimensions: diameter 33mm.

£300-£500

342 Omega. A gold automatic wristwatch, Seamaster, circa 1956 .

Movement: cal. 501, automatic, 19 jewels, no. 15034999.

Dial: silvered, two tone, applied Arabic and dagger indexes, centre seconds.

Case: 18ct gold, snap-on back, Birmingham hallmark for 1956, no. 780466, 18ct gold associated bracelet.

Signed: case, dial and movement, case also stamped Dennison.

Dimensions: diameter 34mm.

£2,000-£3,000



343 Jaeger-LeCoultre. A gold wristwatch, circa 1957.

Movement: cal. P478/C, manual winding, no. 1267903.

Dial: silvered, applied Arabic and dagger indexes, centre seconds.

Case: 14ct gold, snap-on back, no. 734925.

Signed: case, dial and movement.

Dimensions: diameter 35mm.

£200-£300

344 Patek Philippe & Co. Retailed by Cucco. A gold rectangular wristwatch, circa 1940.

Movement: manual winding, no. 833257.

Dial: black, applied faceted baton indexes, subsidiary seconds.

Case: 18ct gold, snap-on back, no. 619946, 18ct gold buckle.

Signed: case, dial, movement and buckle.

Dimensions: length including lugs 42.5mm, width 20mm.

£6,000-£8,000

Ottavio Cucco opened his first jewellery store in 1886 in Biella, Italy. It soon became the city's leading jeweller and an official retailer for Patek Philippe. The business continued to thrive in the hands of his son, Leonzio, who passed it on to the Albonico family in 1945, having no children of his own. In 1978, also childless, the Albonico family chose Roberto Boglietti to take over the running of the world famous atelier. Roberto Boglietti had trained in his family's workshop, watching his father and uncle at work creating objects of boundless beauty. Boglietti's stylish designs are now known for their skilled mastery around the world. It was Roberto Boglietti who Patek Philippe asked to design the famous Twenty-4 lady's wristwatch in 1997.



Actual size



- 345 Omega. A stainless steel tonneau-form wristwatch, De Ville, circa 1969.**
Movement: cal. 620, manual winding, 17 jewels, no. 28509461.
Dial: silvered, applied baton indexes.
Case: stainless steel, snap-on back, no. 111098, associated expandable bracelet.
Signed: case, dial and movement.
Dimensions: length including lugs 35mm, width 31.5mm. £200-£300



- 346 Omega. A gold plated tonneau-form automatic wristwatch with day and date, Seamaster, circa 1972.**
Movement: cal. 1022, automatic.
Dial: gilt, applied baton indexes, apertures for day and date.
Case: gold plated, screw-down back.
Signed: case, dial and movement.
Dimensions: diameter 35mm. £500-£700

- 347 Omega. A gold plated automatic wristwatch with date and bracelet, Seamaster, circa 1969.**
Movement: cal. 562/1, automatic, 24 jewels.
Dial: silvered, applied baton indexes.
Case: gold plated, screw-down back, gold plated bracelet.
Signed: case, dial, movement and bracelet.
Dimensions: diameter 36mm, bracelet circumference approximately 200mm. £200-£300



- 348 Omega. A gold automatic tonneau wristwatch with day and date, Constellation, circa 1969.**
Movement: cal. 751, automatic, 24 jewels, no. 27646362.
Dial: silvered, textured finish, applied baton indexes, aperture for day and date, centre seconds.
Case: 18ct gold, screw-down back, no. 1685455/6, London hallmark for 1969, associated 9ct gold bracelet.
Signed: case, dial and movement.
Dimensions: length including lugs 39mm, width 34mm. £1,500-£2,000

349 Omega. A stainless steel chronograph wristwatch, Ref. 145.022-69 S.T, Speedmaster, circa 1969.

Movement: cal. 861, manual winding, 17 jewels, no. 30586200, dust cap.

Dial: black, baton indexes, engine-turned subsidiary dials for constant seconds, 30-minute and 12-hour registers.

Case: stainless steel, screw-down back, calibrated bezel, associated stainless steel bracelet.

Signed: case, dial and movement.

Dimensions: diameter 43mm.

£2,600-£3,600

The Speedmaster reference 145.022-69 was produced between 1969 and 1971. It marked a major turning point in the history of the Speedmaster as it was now powered by the new calibre 861 movement with a cam-switch chronograph.



350 Tissot. A lady's gold square wristwatch, Ref. 19005-42, circa 1960.

Movement: cal. 709-2, manual winding, 17 jewels.

Dial: gilt, applied baton indexes.

Case: 18ct gold, snap-on back.

Signed: case, dial and movement.

Dimensions: length including lugs 24mm, width 16.5mm.

£120-£160



351 Bulova. A square stainless steel automatic wristwatch with date, Ref. 733, circa 1960.

Movement: automatic, 17 jewels.

Dial: silvered, baton indexes, aperture for date.

Case: stainless steel, screw-down back, no. 2-435019.

Signed: case, dial and movement.

Dimensions: length including lugs 28mm, width 21mm.

£40-£60

352 Movado. A lady's gold rectangular wristwatch with bracelet, circa 1950.

Movement: manual winding, 15 jewels.

Dial: silvered, applied baton and square indexes.

Case: 18ct gold, snap-on back, stepped flared lugs, no. A66993 R4280 associated 18ct gold bracelet.

Signed: case, dial and movement.

Dimensions: length including lugs 25mm, width 15mm, bracelet circumference approximately 155mm.

£500-£600



353 Swiss. A lady's gold and diamond-set bracelet watch, circa 1920.

Movement: manual winding, 15 jewels.

Dial: silvered, Arabic numerals.

Case: gold, diamond-set bezel, snap-on back, stamped LN C&Cld, later integral gold bracelet.

Signed: unsigned.

Dimensions: length 20mm, width 20mm, bracelet circumference approximately 165mm.

£300-£400

354 Rolex. A lady's white gold and diamond-set bracelet watch, Ref. 228, Precision, circa 1960.

Movement: cal. 1400, manual winding, 18 jewels.

Dial: textured silvered, applied baton indexes.

Case: 18ct white gold, bezel and bracelet set with baguette and brilliant-cut diamonds, snap-on back.

Signed: case, dial and movement.

Dimensions: length including diamond-set lugs 37.5mm, width 16mm, bracelet circumference approximately 150mm.

£800-£1,000



355 Ancora. A white gold sapphire and diamond-set cocktail watch with concealed dial, circa 1930.

Movement: manual winding, 17 jewels.

Dial: silvered, Arabic numerals.

Case: 18ct white gold, sapphire and diamond-set hinged cover, integral bracelet of loop design set with baguette and single-cut diamond.

Signed: dial.

Dimensions: diameter 16mm, bracelet circumference approximately 140mm.

£600-£800

356 Mathey-Tissot. A lady's gold, ruby and diamond-set bracelet watch, circa 1960.

Movement: manual winding.

Dial: silvered, applied dot and dagger indexes.

Case: 18ct gold, snap-on back, ruby and diamond-set bezel, integral mesh bracelet, London hallmark for 1960.

Signed: dial.

Dimensions: diameter 18.5mm, bracelet circumference approximately 175mm.

£500-£700



357 Cartier. A stainless steel and gold wristwatch with bracelet, Santos Ronde, circa 1990.

Movement: quartz.

Dial: white, Roman numerals, secret signature at VII.

Case: stainless steel and gold, bezel and back secured with eight screws, stainless steel bracelet with gold screws.

Signed: case, dial, movement and bracelet.

Dimensions: diameter 32mm, bracelet circumference approximately 175mm. £600-£800



358 Cartier. A stainless steel wristwatch with bracelet, Must de Cartier, circa 1980.

Movement: quartz.

Dial: silvered.

Case: stainless steel, gilt Rolex numerals to the bezel, back secured by six screws, sapphire cabochon-set winding crown, stainless steel bar link bracelet with double deployant clasp.

Signed: case, dial, movement and bracelet.

Dimensions: diameter 31mm, bracelet circumference approximately 175mm. £200-£300

359 Ebel. A lady's stainless steel and gold bracelet watch, Ref. 181908, Wave, circa, 1990 .

Movement: quartz.

Dial: cream, applied Roman numerals.

Case: stainless steel, gold bezel with gold screws, back secured with four screws, integrated satin-finished stainless steel wave bracelet.

Signed: case, dial, movement and bracelet.

Dimensions: diameter 26mm, bracelet circumference approximately 165mm. £200-£300





360 Rolex. A lady's stainless steel and gold automatic wristwatch with bracelet, Ref. 67193, Oyster Perpetual, circa 1984.

Movement: cal. 2130, automatic, 29 jewels.

Dial: white, Roman numerals, centre seconds.

Case: stainless steel Oyster case, screw-down crown and back, back with inscription, gold bezel, no. 8615818, stainless steel and gold Jubilee bracelet.

Signed: case, dial, movement and bracelet.

Dimensions: diameter 25mm, bracelet circumference approximately 170mm.

Accessories: blank guarantee, Datejust booklet, plastic wallet, spare link, presentation case. £800-£1,000.



361 Jaeger-LeCoultre. A lady's white gold and diamond-set oval wristwatch, circa 1980.

Movement: cal. P838, manual winding, no. 1758373.

Dial: silvered, baton indexes.

Case: 18ct white gold, diamond-set bezel, snap-on back, no. 1048566 A.

Signed: dial and movement.

Dimensions: length 23mm, width 28mm. £400-£600

362 Corum. A stainless steel and diamond wristwatch, Ref. 39.151.47, Bubble, circa 2005.

Movement: quartz.

Dial: dark blue, luminous dot indexes and Arabic numerals, luminous hands, aperture for date, centre seconds.

Case: stainless steel, diamond-set bezel, snap-on back, domed crystal, stainless steel double folding clasp.

Signed: case, dial, movement and buckle.

Dimensions: diameter 35mm.

£300-£500



363 Omega. A stainless steel automatic chronograph wristwatch with date and bracelet, Ref. 5313.30.00, Speedmaster, circa 2005.

Movement: cal. 1152, automatic.

Dial: silvered, two-tone, applied baton indexes, subsidiary dials for constant seconds, 30-minute and 12-hour register, aperture for date.

Case: stainless steel, snap-on back, stainless steel bracelet.

Signed: case, dial, movement and bracelet.

Dimensions: diameter 39mm, bracelet circumference approximately 205mm..

Accessories: international warranty, service card, instructions, booklet, spare link and presentation case. £700-£900

364 Rolex. A stainless steel and gold wristwatch with date and bracelet, Ref. 17013, Oysterquartz, circa 1981.

Movement: cal. 5035, quartz, 11 jewels.

Dial: champagne, applied baton indexes.

Case: stainless steel and gold Oyster case, screw-down back and crown, no. 6401177, stainless steel and gold bracelet.

Signed: case, dial, movement and bracelet.

Dimensions: diameter 36mm, bracelet circumference approximately 195mm. **£2,000-£3,000**



365 Rolex. A stainless steel wristwatch with black honeycomb dial, Ref. 6480, Oyster, circa 1957.

Movement: cal. 1210, manual winding, 17 jewels.

Dial: black honeycomb, applied Arabic and dagger indexes, centre seconds.

Case: stainless steel Oyster case, screw-down crown and back, no. 301498, stainless steel Oyster bracelet.

Signed: case, dial, movement and bracelet.

Dimensions: diameter 35mm, bracelet circumference approximately 180mm. £1,000-£1,500



366 Rolex. A stainless steel automatic wristwatch, Ref. 5500, Explorer, circa 1968.

Movement: cal. 1520, automatic, 26 jewels.

Dial: black, triangular, baton and Arabic indexes, centre seconds.

Case: stainless steel Oyster case, screw-down crown and back, no. 1817172.

Signed: case, dial and movement.

Dimensions: diameter 34mm. £3,000-£5,000

367 Rolex. A stainless steel automatic wristwatch with bracelet, Ref. 1016, Explorer, circa 1972.

Movement: cal. 1570, automatic, 26 jewels.

Dial: black, triangular, baton and Arabic numerals, centre seconds.

Case: stainless steel Oyster case, screw-down crown and back, no. 2986237, stainless steel Oyster bracelet.

Signed: case, dial, movement and bracelet.

Dimensions: diameter 36mm, bracelet circumference approximately 200mm. £4,000-£6,000





368 Rolex. A stainless steel automatic wristwatch with bracelet, Ref. 5508, Submariner, 'James Bond', circa 1960.

Movement: cal. 1530, automatic, 26 jewels, no. 83730.

Dial: black service dial, triangular, baton and dot indexes, centre seconds.

Case: stainless steel Oyster case, screw-down crown and back, calibrated bezel, inside case back stamped 5508 11.62, stainless steel Oyster bracelet.

Signed: case, dial, movement and bracelet.

Dimensions: diameter 38mm.

£6,000-£8,000

The Submariner reference 5508 was first released in 1958, replacing the 6536 and featured the new calibre 1530 movement. All these early Submariner models without crown guards are known to collectors as the James Bond models. This is because this was the watch of choice for the famous British secret service agent in the early films featuring Sean Connery in the 1960s.

369 Rolex. A lady's stainless steel, gold and diamond-set automatic wristwatch with date, bracelet and later diamond-set bezel, Ref. 69173, Datejust, circa 1998.

Movement: cal. 2135, automatic, 29 jewels.

Dial: black, diamond-set indexes, magnified date aperture.

Case: stainless steel Oyster case, screw-down crown and back, later diamond-set bezel, stainless steel and gold Jubilee bracelet.

Signed: case, dial, movement and bezel.

Dimensions: diameter 26mm, bracelet circumference approximately 150mm.

Accessories: gold Rolex bezel.

£1,500-£2,000



370 Rolex. A mid-size stainless steel and gold automatic wristwatch with bracelet, Ref. 6548, Oyster Perpetual, circa 1958.

Movement: cal. 1130, automatic, 26 jewels.

Dial: champagne, applied baton indexes, centre seconds.

Case: stainless steel and gold Oyster case, screw-down crown and back, no. 422516, stainless steel and gold Oyster bracelet.

Signed: case, dial, movement and bracelet.

Dimensions: diameter 30.5mm, bracelet circumference approximately 175mm.

£700-£900

371 Rolex. A stainless steel and gold automatic wristwatch with bracelet, Ref. 1003, Oyster Perpetual, circa 1979.

Movement: cal. 1570, automatic, 26 jewels.

Dial: gilt, applied baton indexes.

Case: stainless steel and gold Oyster case, screw-down crown and back, no. 5900617, stainless steel and gold Oyster bracelet.

Signed: case, dial, movement and bracelet.

Dimensions: diameter 34mm, bracelet circumference approximately 195mm.

£1,800-£2,500



372 Rolex. A stainless steel and gold wristwatch with date and bracelet, Ref. 17013, Oysterquartz, circa 1988.

Movement: cal. 5035, quartz, 11 jewels.

Dial: champagne, applied baton index, magnified date aperture.

Case: stainless steel and gold Oyster case, screw-down crown and back, no. R682160, stainless steel and gold bracelet.

Signed: case, dial, movement and bracelet.

Dimensions: diameter 36mm, bracelet circumference approximately 185mm.

Accessories: guarantee, Oysterquartz booklet, leather wallet. £2,000-£3,000



373 Rolex. A gold automatic wristwatch with day, date and bracelet, Ref. 1803, Day-Date, circa 1972.

Movement: cal. 1556, automatic, 24 jewels.

Dial: gilt, applied baton indexes, aperture for day, magnified date.

Case: 18ct gold, Oyster case with screw-down crown and back, no. 3126729, 18ct gold President bracelet.

Signed: case, dial, movement and bracelet.

Dimensions: diameter 37mm, bracelet circumference approximately 190mm.
£5,000-£7,000

Originally launched in 1956, the Rolex Day-Date is a symbol of success and accomplishment. Known as 'The President's Watch', this iconic model has graced the wrists of important world leaders and celebrities such as U.S. President Lyndon B. Johnson, The Dalai Lama, Michael Jordan and Jack Nicklaus.



Objects of Vertu





374 A gold plated 'Must de Cartier' pen by Cartier, with engine turned decoration and trinity band to the cap, signed 'Cartier Paris', 'Plaque Or', numbered '071526', case, box and papers, length 14.5cm. £100-£120

375 An 18ct gold propelling pencil, by Parker, with engine-turned decoration, signed and hallmarked for London 1968, length 12.8cm. £200-£300



376 A 9ct gold retractable pencil fob, of plain polished form, hallmarked for Birmingham, 1911, and bearing maker's mark 'A.D', length (retracted) 63.5mm. £200-£300



377 A red lacquer lighter by Dunhill, of rectangular form, signed 'Dunhill', numbered '24163', case, pouch and papers, length 6.2cm. £80-£100



378 An Edwardian 9ct gold vesta case, of rectangular form with hinged lid, the front inscribed '143,2 A.V.H 1910', with suspensory loop, by William Neal, hallmarked for Chester, 1909, length 50mm. £400-£500

379 Of Regimental interest: A pair of silver menu holders, by Frederick James Ross & Sons, realistically modelled as 19th century riflemen, hallmarked for London, 1908, cased, height 43mm. £100-£200

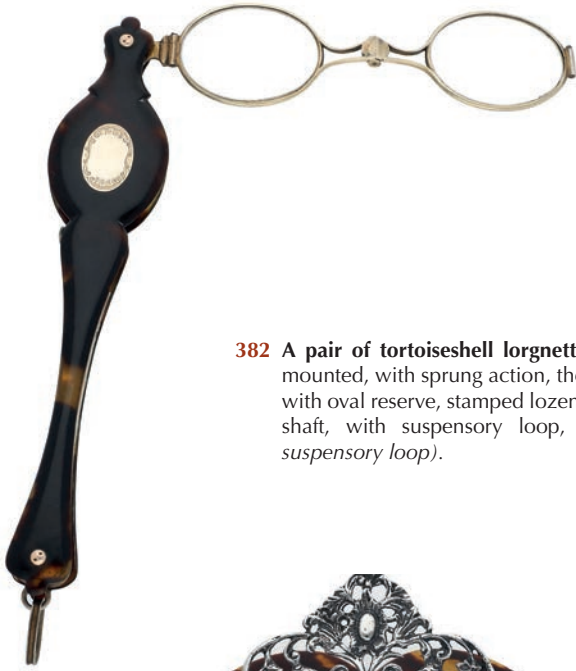


380 Of Regimental interest: A Victorian Grenadier Guards silver menu holder by Sampson Mordan, modelled as a cluster of four flaming grenades, the flames gilded, hallmarked for London 1890, engraved by retailer 'Jones - Paris & London', length 51mm. £100-£150

381 Of Regimental interest: A set of six silver Household Cavalry menu holders, each realistically modelled as a British cavalry soldier in full ceremonial dress, raised on socles, with maker's mark 'E&J', stamped '925' and hallmarked for London, 2017, height 10cm. £340-£400



Please note tortoiseshell (hawksbill turtle) is covered by CITES legislation and may be subject to import/export and trade restrictions and USA Fish and Wildlife regulations. Please be aware that it is the buyer's responsibility to arrange any CITES export license for their purchases. More information can be found at www.cites.org.



382 A pair of tortoiseshell lorgnettes, circa 1900, gilt metal mounted, with sprung action, the tortoiseshell handle inset with oval reserve, stamped lozenge maker's mark to reeded shaft, with suspensory loop, length 15cm (excluding suspensory loop). £50-£60



383 A late Victorian tortoiseshell and silver clip by Grey & Co., the heart-shaped tortoiseshell panel applied with a pierced decorated clip, with two mythical figures in profile, with maker's mark, hallmarked for Birmingham 1897, length approximately 12cm. £100-£150



384 A 19th century leather and gilt brass mounted perfume casket, the hinged lid opening to reveal a cream interior with fitted compartments containing two cut-glass perfume bottles, with gilt screw cap lids, the leather casket with applied gilt brass decoration, the lid mounted with a circular Wedgwood cameo plaque, with key, dimensions approximately 13 x 12 x 8cm. £100-£150



385 A set of six Victorian silver gilt and enamel teaspoons, the finials modelled with Eastern deities, with twist stems above winged shoulders, the bowls decorated in polychrome cloisonné enamel, maker's marks indistinct, Birmingham 1890, length 10.2cm. £150-£200

386 Two travelling miniature scent bottles, the torpedo-shaped scent bottles with cranberry and blue glass bodies respectively, with screw off foliate engraved white metal covers, lengths 45mm. £120-£150



387 An Art Deco silver mounted cut-glass perfume bottle, the globular-shaped body with silver collar and hinged lid decorated with blue guilloché enamel, with frosted glass stopper, by Adie Bros Ltd, hallmarked for Birmingham, 1924, height approximately 13.2cm. £150-£180

388 A pair of silver mounted glass perfume bottles, 1918, of slender ovoid form, etched with meandering roses, raised on circular foot, the silver dished collars with beaded edge and teardrop-shaped glass stoppers, London hallmark, by Robert Pringle & Sons, height 17cm. £60-£80





389 An Edwardian silver lion pin cushion, the lion realistically modelled in standing pose, with full mane, by Adie & Lovekin Ltd, Birmingham 1907, height 53mm. £600-£800



390 An Edwardian silver duck pin cushion, realistically modelled, with red stone cabochon eyes by Adie & Lovekin Ltd, Birmingham 1908, height 34mm. £100-£150



391 An Edwardian silver suffragette pepperette, by Saunders & Shepherd, with pull off cover, modelled as a suffragette in a peek bonnet, tied with a bow beneath her chin, carrying two ivory placards, the red lettering reading 'VOTES FOR WOMEN' to the front and 'WE CAN MAKE THINGS HOT FOR YOU' to the reverse, with stamped Registration No. 522383, hallmarked for Chester 1908, height 8.3cm. £600-£800

An almost identical example was sold through these rooms on 18 June 2019, Lot 287.





A calotype of the Newhaven Fishwives by Hill and Adamson, 1843-1847



392 A Scottish silver cast pepper modelled as a Newhaven fishwife in traditional striped working dress and cap, her arms folded, the figure raised on screw off circular base, by William Hamilton & Son, Edinburgh 1926, height 8.8cm. £300-£400

393 A Scottish silver table bell, modelled as an elderly Victorian lady, wearing a crinoline dress, shawl and bonnet, and carrying a Pekinese dog and walking stick, by Hamilton & Inches, hallmarked for Edinburgh, 1931, height 9.5cm. £200-£300



The Newhaven Fishwives were photographed by David Octavius Hill and Robert Adamson between 1843-47, as part of a series of photographs documenting the life and work of the fishermen and women of Newhaven, an independent fishing village to the north of Edinburgh. Because their early paper-negative process (calotype) could not record the fishermen at sea, Hill and Adamson focused instead on Newhaven's fishwives. Whilst the men went out to sea, the women did most of the land work, such as gutting and preparing the fish and they would walk the hilly two miles from Newhaven to the centre of Edinburgh carrying willow baskets filled with freshly caught fish. They were known for their distinctive traditional costumes of brightly coloured striped working dresses, woollen aprons and white caps and their robust natural beauty. They were admired for their strong and heroic character and were renowned for their sharp tongues which gave rise to the Scott's expression "a tongue like a fishwife".



- 394** A 19th century Russian silver and niello snuff box, of rectangular form, the hinged cover depicting the Bolshoi Theatre in Moscow, the image within cartouche outline and bordered by geometric decoration, with push button fastener, hallmarked for Moscow 1873, assay master's mark for Viktor Vasilyevich Savinsky or Veniamin Vasilyevich Savinsky, maker's mark indistinct, 84 zolotnik standard purity mark, *dimensions 10.5 x 5.9cm.* £200-£300



- 395** Two 20th century enamelled boxes, the first hinged box of rectangular form and decorated throughout with floral motifs of pink, blue, green, and black champlevé enamel, the second oval box with engine-turned cover and pink enamel background, centred with a black camel with green and blue saddle, the rim decorated with black floral motifs, both stamped '925', *first box length 7.7cm.* £90-£120

- 396** A George IV silver rectangular snuff box, with scroll and foliate chased borders, and engine-turned base, the hinged lid crested and initialled, by Thomas Shaw, Birmingham 1825, *dimensions 73.5 x 44mm.* £100-£120





- 397** A silver presentation miniature oar, HMS Hood, the blade inscribed 'W.O.s GIGS "HOOD", 1935', the blade engraved with the names 'BENNETT, BUCKNALL, BROOKER, TOMES, MARTIN, DRISCOLL, FIELDING', with maker's mark "NA&AFI" for NAVY, ARMY & AIR FORCE INSTITUTE, hallmarked for Birmingham 1934, length 20.5cm. £80-£120

HMS Hood was a modified Royal Sovereign-class pre-dreadnought battleship built for the Royal Navy, early 1890s, the pride of the British Navy and revered as the world's most powerful warship for more than 20 years.

In 1935, HMS Hood was in Home waters and in the Mediterranean on various exercises visiting Gibraltar, Portsmouth, Port and Scapa Flow. In July she was part of the Silver Jubilee Fleet Review and later in August took part in Navy Week at Portsmouth. Competitions between Navy ships was a frequent occurrence when vessels gathered in port.

On 24 May 1941, in the Battle of the Denmark Strait, HMS Hood was struck by German shells from the Bismarck, Germany's largest battleship. HMS Hood exploded and sank within three minutes, with the loss of all but three of her crew of 1418 men. These deaths constituted the Royal Navy's greatest single ship loss of the Second World War.



- 398** An Edwardian silver padlock-shaped hinged pocket watch stand, by Grey & Co., raised on pad feet, Registration No. 416422, enclosing unassociated nickel cased open face keyless wind pocket watch, with maker's mark, London hallmark for 1901, height 11cm. £120-£150

- 399** A late Victorian silver miniature ship's 'Port Lantern' table spirit lighter, of tri-form design, with hinged carrying handle and inset with domed cranberry glass 'light', the detachable cover enclosing wick, by Lawrence Emanuel, hallmarked for Birmingham 1896, the base engraved by retailer, 'Weir Silversmith Glasgow', monogrammed, dimensions 8.5 x 4.5 x 5.8cm. £400-£600



- 400** An Edwardian silver mounted easel back photograph frame, of shaped rectangular form, the silver border applied to a green velvet mount, embossed with C-scrolls and flowering foliage, with central vacant cartouche surmount, by Henry Matthews, Birmingham 1901, *dimensions 32 x 22.8cm.*
£140-£180



- 401** A late Victorian tortoiseshell and silver mounted easel back photograph frame, the shaped rectangular tortoiseshell mount applied with embossed silver border of flowers and scrolling foliage, with central vacant cartouche surmount, by Henry Matthews, Birmingham 1896, *dimensions 20.5 x 15.3cm.*
£300-£400

- 402** A photograph frame, of plain polished rectangular form, stamped 'STERLING / 8S', *length 25.5cm.*
£60-£80



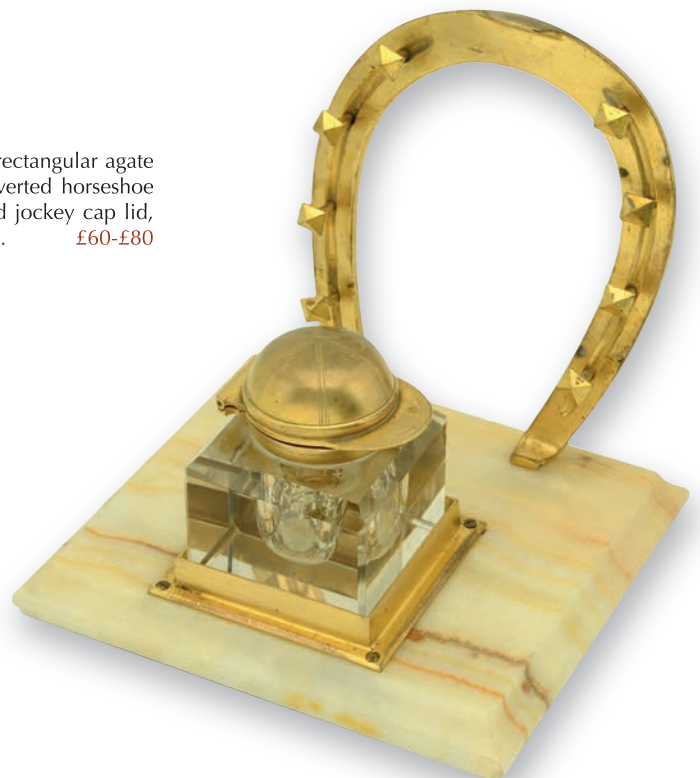


403 An Art Deco chalcidony cigarette box, the rectangular box with chamfered corners, the lid edged with a fine malachite inset border and with malachite thumbpiece, the silver hinge hallmarked for Henry Griffiths & Sons, London 1937, dimensions 11.8 x 9.8 x 3.9cm. £400-£600



404 A set of three hunting themed silver plated stirrup cups, retailed by Mappin & Webb, in the form of a stag, a fox and a hare, the hare example signed 'Mappin & Webb, London', height 12.5cm. £100-£150

405 A gilt mounted ink stand, composed of a rectangular agate panel base, mounted with a gilt metal inverted horseshoe and a square cut-glass inkwell with hinged jockey cap lid, height 14cm, base dimensions 15 x 13.8cm. £60-£80



Please note tortoiseshell (hawksbill turtle) is covered by CITES legislation and may be subject to import/export and trade restrictions and USA Fish and Wildlife regulations. Please be aware that it is the buyer's responsibility to arrange any CITES export license for their purchases. More information can be found at www.cites.org.



406 An Austrian silver and enamel cigarette case, circa 1900, of rectangular form, enamelled with a young lady dressed in a plumed hat, and in her undergarments, wearing long black gloves and black stockings and revealing her petticoats, with maker's mark G.A.S. for Georg Adam Scheid, Vienna, stamped hexagonal Diana head hallmark (in use between 1867-1922) and town code A for Vienna, 900/1000 standard, *dimensions 87 x 60.5mm. £500-£700*

Georg Adam Scheid (1838-1921) was born in Schönau Baden, Germany. At the age of sixteen, he began an apprenticeship, working in both Pforzheim and Stuttgart. In 1858 he travelled to Vienna to work for the goldsmith Michael Markowitsch. Scheid became a partner in the firm in 1862 and the company was renamed Marakowitsch & Scheid. The business premises were located at 8 Sandwirtgasse, later moving to 83 Gumpendorfer Straße. Michael's son Adolf joined the business, later taking on the management of the firm until the company ceased trading in 1898.

On leaving the partnership, Scheid moved next door to 85 Gumpendorfer Straße. The business proved to be extremely successful, excelling in silver and enamel work, and employing up to three hundred workers at their manufacturing premises.

As well as a talented silversmith and artist, Scheid was also an astute businessman. In 1888 he open his own refinery where precious metal wastes could be rendered for re-use. The plant was so productive that they exported refined precious metals worldwide. In 1894 Scheid was joined in partnership by his nephew and two sons, Arthur and Robert. The business had already participated in the Jubilee exhibition of 1889, and exhibited at the Paris 1900 Exposition Universelle. In 1911, at the age of 74, Scheid retired, his sons taking over the management of the company.

World War I had a devastating effect on the business, with a total collapse in overseas trade and the dire economic situation in Austria and Germany leading to the liquidation of the part of the business involved in decorative silver and gold accessories, although the refinery continued to trade.

Scheid died in 1921, and was buried in the family tomb at the Evangelischer Friedhof Simmering, Vienna. In 1962 the refinery Scheid had founded was merged with the Ludwig Roessler GmbH, leading to the founding of Ögussa GmbH. Ögussa is still located at 85 Gumpendorfer Straße.

407 A Victorian silver vesta case, of rectangular form, with hinged snap cover, the front with glazed panel enclosing a red half-crown Prince of Wales's Hospital Fund charity stamp for 2/6, with suspensory loop, by Deakin & Francis, Birmingham 1897, together with two loose similar charity stamps, *dimensions 47 x 43 x 12mm. £400-£600*



408 A French gold and enamel vesta case, circa 1900, of rectangular form with sloping sprung hinged lid, enamelled throughout, the front and reverse depicting images of Fanny LeGrand, in two different black gowns, front panel with artist's monogram, dimensions 50 x 36 x 10mm. £500-£600



Reverse



The image to the reverse of the vesta case is after the oil painting by Italian artist **Ignace Spiridon**, painted in 1894, depicting Fanny LeGrand, the main character from the French author **Alfonse Duadet's** novel 'Sappho', published in 1884. The story was a thinly disguised autobiographical account of Daudet's love affair with the notorious Parisian model-cum-courtesan, Marie Rieu, the story perhaps written as moral tale intended for his two sons to read when of age.

In 1900, an American play of the same name, 'Sapho' (sic) was produced by Clyde Fitch, and based on the 1884 French novel. The play caused a sensation in New York City leading to an indecency trial involving the play's star and producer/director, **Olga Nethersole**. The court case was ultimately considered to be a landmark case in the transformation of American society away from the Victorian morals of the past.

Spiridon's painting was used as the basis for the theatre posters advertising Olga Nethersole's role in the play. The Broadway poster shows a more modest version of the dress length than seen in the original painting.



409 A rare Victorian silver castle top card case by Nathaniel Mills, of rectangular form, chased and embossed with floral and foliate decoration, the front with a raised depiction of Buckingham Palace in 1847, showing the Marble Arch to the forecourt, as it appeared before Edward Blore's alterations completed in 1850, when the courtyard of the Palace was enclosed and the Marble Arch was moved to its present location, the reverse centred with a cartouche engraved 'A.S.Green', maker's mark, hallmarked for Birmingham 1847, *dimensions 87 x 60 x 12mm.*

£800-£1,200

410 A Victorian silver book vesta case by George Unite, the front engraved with an eight point star, the reverse with a cross, both within repeating guilloche borders, the strike vertically mounted, Birmingham 1878, *dimensions 45 x 10mm.*



411 Three silver vesta cases, the first of rounded oblong form, engraved throughout with ivy leaf decoration, initialled to reverse, with suspensory loop, by Colen Hewer Cheshire, Birmingham 1896, the second modelled as four cigars, foliate engraved, by Turner Brothers, Birmingham 1895, the third formed as an entwined serpent, stamped '925', *lengths 49mm (excluding suspensory loop), 50mm, 43mm respectively.*

£100-£150



412 An Edwardian circular silver vesta case, the front die struck with golfing scene, the principal golfer in full swing, with hinged flip lid, attached suspension loop, by S Bros, Birmingham 1906, dimensions 47mm x 9mm. £300-£400

413 An Edwardian novelty silver Association Football vesta case, shaped in the form of a leather football, the front with engraved lace and panel detail, stamped Registration No. 467827 to the reverse, with suspensory loop, by Henry Williamson Ltd, Birmingham 1906, dimensions 52 x 54mm.

£300-£400

This is one of the larger models of these Association Football vesta cases. Other examples in this series by H. Williamson Ltd of 81, Farringdon Road, London E.C. included ruby, cricket and golf vesta cases, and were made in silver, 9ct gold, 15ct gold and gun metal.



414 A Victorian silver combination vesta and sovereign case, of rectangular form with rounded corners, engraved with scrolling foliate decoration throughout, incorporating a hinged cover to the front opening to reveal a sprung sovereign holder, the case enclosing a toothpick, (lacking accompanying pencil), engraved with Patent No. 4709, maker's mark possibly 'W.T' for William Twigg, Birmingham 1891, monogrammed, with suspensory loop, length 64mm.

£70-£100

415 A Victorian silver vesta case by Sampson Mordan, engraved with pairs of finches amidst flowering blossom, the reverse incorporating a vacant rectangular reserve, on ring suspension loop, London 1883, length (including suspension loop), 59mm.

£70-£100





416 A Victorian silver and enamelled vesta case by **Sampson Mordan**, the front enamelled with a Grenadier guardsman, wearing the Egypt and Sudan medal 1882-89 and the Khedive's Star, the reverse engraved with presentation inscription 'Paddy from Cosmo', London 1889, *dimensions* 58 x 32 x 10mm. **£600-£800**

417 A Victorian silver and enamel vesta case by **Sampson Mordan & Co.**, the front enamelled with a golfer in plus fours and flat cap, with a cottage to the background, numbered '7', London 1891, *dimensions* 58 x 31 x 9.5mm. **£600-£800**



418 An Edwardian silver and enamel vesta case by **Sampson Mordan & Co.**, depicting a shooting party, in wooded landscape with stream, possibly depicting King Edward VII with two attendants and four dogs, numbered '11', Chester 1909, *dimensions* 58 x 31 x 10mm. **£600-£800**



419 A set of four Edwardian silver and enamel menu holders, by **Sampson Mordan & Co. Ltd.**, the circular enameled scenes depicting game birds in flight - red grouse, drake mallard, cock pheasant and English partridge, all stamped with Registration No. 402227, hallmarked for Chester 1907, (the partridge, hallmarked for Chester 1908, with enamel damage), cased, *dimensions* 30 x 40mm. **£600-£800**



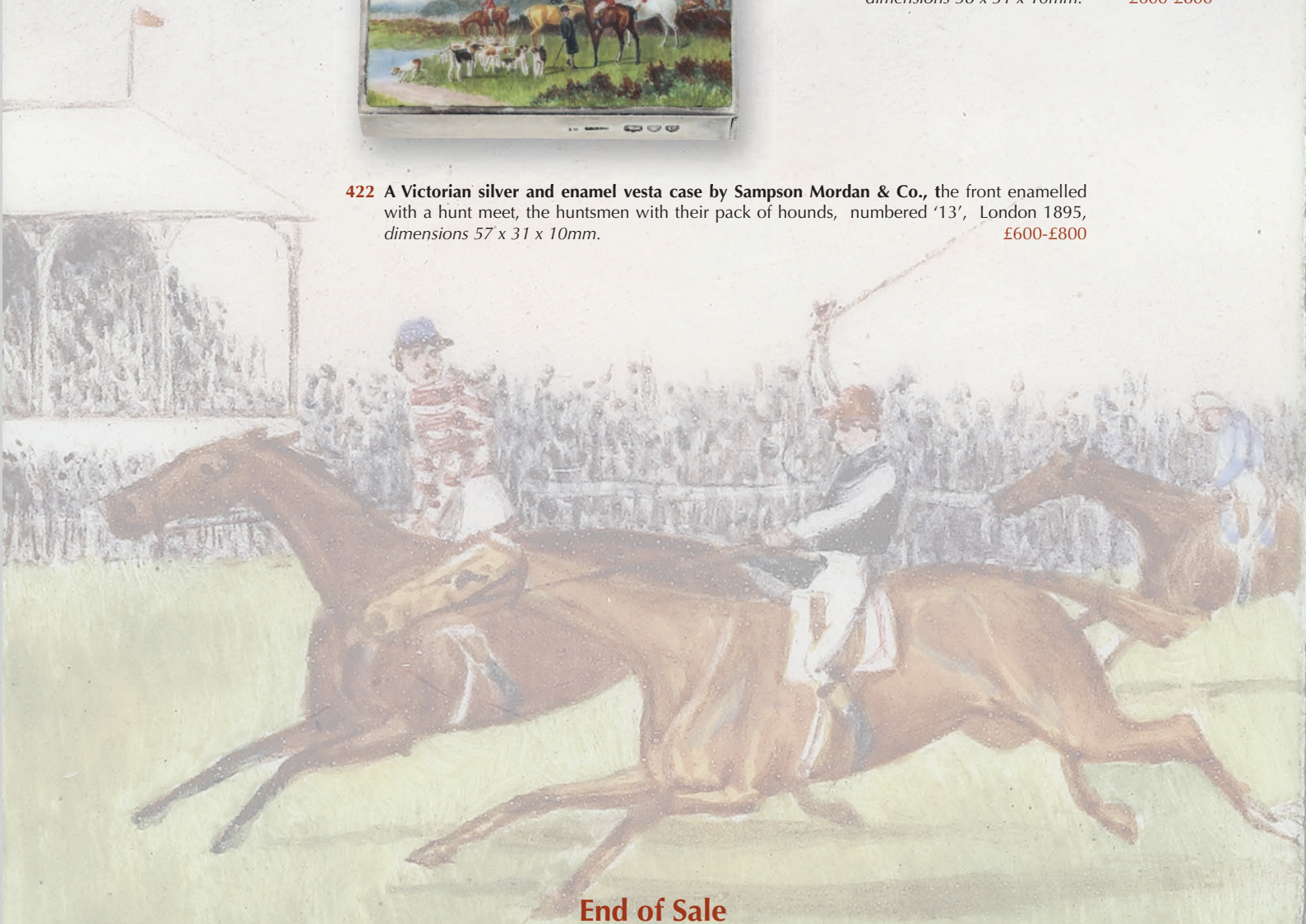
420 A Victorian silver and enamel combination vesta case, of slim narrow form, incorporating a penknife, propelling pencil and button hook, the lid enamelled with a horse racing scene at full gallop, silver gilt interior engraved by retailer 'H. LEWIS, 72 NEW BOND ST. W.' with suspensory loop, by Alfred Fuller, London 1887, dimensions 75 x 19mm. £600-£800



421 A Victorian silver and enamel vesta case by Sampson Mordan & Co., the front enamelled with a horse racing scene, the horses at full gallop before a grandstand and cheering crowd, the reverse monogrammed and engraved 'August 29th 1891', London 1890, dimensions 58 x 31 x 10mm. £600-£800



422 A Victorian silver and enamel vesta case by Sampson Mordan & Co., the front enamelled with a hunt meet, the huntsmen with their pack of hounds, numbered '13', London 1895, dimensions 57 x 31 x 10mm. £600-£800



End of Sale

DIAMONDS

Diamonds are assessed according to the four Cs:

Carat weight

1 carat equals 0.2 grams.

Cut

The quality of a cut is assessed in terms of its proportions, symmetry and polish.

Colour

Unless regarded as a 'fancy' coloured diamonds, all diamonds are graded on their lack of colour. The gradings runs as follows:

GIA	CIBJO	Traditional
D	Exceptional White + (EW+)	Finest White
E	Exceptional White (EW)	Finest White
F	Rare White + (RW+)	Fine White
G	Rare White (RW)	Fine White
H	White (W)	White
I	Slightly Tinted White (STW)	Commercial White
J	Slightly Tinted White (STW)	Top Silver Cape
K	Tinted White (TW)	Top Silver Cape
L	Tinted White (TW)	Silver Cape
M-Z	Tinted Colour (TC)	Cape
Fancy	Fancy Colour	

Clarity

Diamonds are graded on their freedom from inclusions (within the stone) and blemishes (found on the surface of the stone). They are assessed using 10x magnification, and are graded as follows:

GIA	CIBJO	Description
Flawless (FL)	Loupe Clean (LC)	Shows no inclusions or blemishes
Internally Flawless (IF)	Loupe Clean (LC)	Shows no inclusions and only insignificant blemishes
Very Very Slightly Included (VVS1/2)	Very Very Slightly Included (VVS1-2)	Contains minute inclusions which are very difficult for an experienced grader to see with 10x magnification
Very Slightly Included (VS1-2)	Very Slightly Included (VS1-2)	Contains very small inclusions that are difficult to see with 10x magnification
Slightly Included (SI1-2)	Slightly Included (SI1-2)	Contains inclusions that are easily visible with 10x magnification
Imperfect/Included (I1-3)	Pique (P1-3)	Contains inclusions that are obvious with 10x magnification and can often be seen with the naked eye; durability may be affected

Please note the four Cs of a diamond cannot be fully assessed whilst the stone is mounted. The approximate gradings provided in the condition reports are estimations, made by the specialists whilst the stones were mounted and are for guidance only. If a stone has been unmounted and assessed in a gemmological laboratory, this will be noted in the cataloguing/condition report.

INDEX OF MAKERS

Adler	Lot 223
Ancora	Lot 355
Asprey	Lot 151
J. W. Benson	Lot 305
Palle Bisgaard	Lot 23
Boodles	Lot 150
Audemars & Cie.	Lot 306
Cartier	Lots 263-265, 283, 321, 357-358 and 374
William Comyns & Sons	Lot 308
Corum	Lot 362
Cyma	Lot 325
Deakin & Francis	Lots 129 and 407
De Vroomen	Lot 146
Leo De Vroomen	Lots 143-145
Richard Dickenson	Lot 301
Dior	Lot 224
Sybil Dunlop	Lot 18
Ebel	Lot 359
Erté	Lot 182
Kat Florence	Lots 284-285
Geneva Sport Watch Co.	Lot 327
Georg Jensen	Lot 17
Girard Perregaux	Lot 329
Carlo Giuliano	Lot 193
Hamilton & Inches	Lot 393
Hans Hansen	Lot 181
Karl Gustav Hansen	Lot 181
Henry W. Harrison	Lot 304
Hermès	Lot 163
Jaeger le Coultre	Lots 318, 323, 331-332, 341, 343 and 361
Annabel Jones	Lots 149 and 156
Jules Jürgensen	Lot 326
Kutchinsky	Lot 102
Le Roy et Fils	Lot 312
Longines	Lots 315, 324 and 340
Nathaniel Mills	Lot 409
Mozafarian	Lots 198-199
Omega	Lots 313, 316, 322, 334, 342, 345-349 and 363
Patek Philippe & Co.	Lot 344
Rolex	Lots 335, 338-339, 354, 360, 364-373
Ben Rosenfeld	Lot 164
Frederick James Ross & Son	Lot 339
Thomas Russell & Son	Lot 309
Sampson Mordan & Co.	Lots 380, 415-419, 421-422
Saunders & Shepherd	Lot 391
Sidersky	Lots 293-294
H. Stern	Lot 225
Benjamin Taylor	Lot 302
Theo Fennell	Lot 196
Tiffany & Co.	Lot 94
Trenton Record Dreadnaught Watch Factories	Lot 303
Tudor	Lot 336-337
George Unite	Lot 410
Vourakis	Lot 222
Wempe	Lot 2
Zenith	Lot 330
Zetol	Lot 314



DIX NOONAN WEBB

ENTRIES INVITED

JEWELLERY, WATCHES & OBJECTS OF VERTU

Tuesday 14 June 2022

Consignment deadline 3 May



Cartier coloured diamond and onyx lovebirds brooch, circa 1960
Sold November 2021 for £21,000

www.dnw.co.uk

T: 020 7016 1700 | E: jewellery@dnw.co.uk



**Commission Form – Jewellery, Watches and Objects of Vertu
15 March 2022**

Please bid on my behalf at the above sale for the following Lot(s) up to the price(s) mentioned below.

These bids are to be executed as cheaply as is permitted by other bids or any reserve.

I understand that in the case of a successful bid, a premium of 24 per cent (plus VAT if resident in, or posted to within, the UK) will be payable by me on the hammer price of all lots.

Please ensure your bids comply with the steps outlined below:

Up to £100 by £5

£100 to £200 by £10

£200 to £500 by £20

£500 to £1,000 by £50

£1,000 to £2,000 by £100

£2,000 to £5,000 by £200

£5,000 to £10,000 by £500

£10,000 to £20,000 by £1,000

£20,000 to £50,000 by £2,000

£50,000 to £100,000 by £5,000

Over £100,000 by £10,000

Bids of unusual amounts **will be rounded down** to the bid step below and will **not** take precedence over a similar bid unless received first. All absentee bids will be executed in the name of 'Wood'.

NOTE: All bids placed other than via our website should be received by 15:00 on the day prior to the sale. Although we will endeavour to execute any late bids, DNW cannot accept responsibility for bids received after that time. It is strongly advised that you use our online **Advance Bidding Facility. If you have a valid email address bids may be entered, and amended or cancelled, online at www.dnw.co.uk right up until a lot is offered. You will receive a confirmatory email for all bids and amendments. Bids posted or faxed to our office using this form will now be entered by our staff into the system using exactly this facility to which our clients now have access.**

There is, therefore, no better way of ensuring the accuracy of your advance bids than to place them yourself online.

I confirm that I have read and agree to abide by the Terms and Conditions of Sale printed in the catalogue.

Signed _____

Name (Block Capitals) _____ Client Code _____

Address _____

Tel: _____ Email _____

If successful, I wish to pay for my purchases by (please indicate):

Cash Cheque Credit/Debit Card (see below) Bank Transfer

Other (please give details) _____

All payments to be made in pounds sterling.

If successful, I wish to pay for my purchases by (please indicate):

Mastercard Visa Amex Debit Card Issue No. (if applicable)

Name (as shown on the card) _____ Start Date / Expiry Date /

Your bids may be placed overleaf

Conditions of Business

Conditions mainly concerning Buyers

1 The buyer

The highest bidder shall be the buyer at the 'hammer price' and any dispute shall be settled at the auctioneer's absolute discretion. Every bidder shall be deemed to act as principal unless there is in force a written acknowledgement by Dix Noonan Webb Ltd ("DNW") that he acts as agent on behalf of a named principal. Bids will be executed in the order that they are received.

2 Minimum increment

The auctioneer shall have the right to refuse any bid which does not conform to Dix Noonan Webb's published bidding increments which may be found at dnw.co.uk and in the bidding form included with the auction catalogue.

3 The premium

The buyer shall pay to DNW a premium on the 'hammer price' in accordance with the percentages set out above and agrees that DNW, when acting as agent for the seller, may also receive commission from the seller in accordance with Condition 15.

4 Value Added Tax (VAT)

The buyers' premium is subject to the current rate of Value Added Tax if the lot is delivered to the purchaser within the UK.

Lots marked 'x' are subject to importation duty of 5% on the hammer price unless re-exported outside the UK.

5 Payment

When a lot is sold the buyer shall:

(a) confirm to DNW his or her name and address and, if so requested, give proof of identity; and

(b) pay to DNW the 'total amount due' in pounds sterling within five working days of the end of the sale (unless credit terms have been agreed with Dix Noonan Webb before the auction). Please note that, as stated above, we will not accept cash payments in excess of £5,000 (five thousand pounds) in settlement for purchases made at any one auction.

6 DNW may, at its absolute discretion, agree credit terms with the buyer before an auction under which the buyer will be entitled to take possession of lots purchased up to an agreed amount in value in advance of payment by a determined future date of the 'total amount due'.

7 Any payments by a buyer to DNW may be applied by DNW towards any sums owing from that buyer to DNW on any account whatever, without regard to any directions of the buyer, his or her agent, whether expressed or implied.

8 Collection of purchases

The ownership of the lot(s) purchased shall not pass to the buyer until he or she has made payment in full to DNW of the 'total amount due' in pounds sterling.

9 (a) The buyer shall at his or her own expense take away the lot(s) purchased not later than 5 working days after the day of the auction but (unless credit terms have been agreed in accordance with Condition 7) not before payment to DNW of the 'total amount due'.

(b) The buyer shall be responsible for any removal, storage and insurance charges on any lot not taken away within 5 working days after the day of the auction.

(c) The packing and handling of purchased lots by DNW staff is undertaken solely as a courtesy to clients and, in the case of fragile articles, will be undertaken only at DNW's discretion. In no event will DNW be liable for damage to glass or frames, regardless of the cause. Bulky lots or sharp implements, etc., may not be suitable for in-house shipping.

10 Buyers' responsibilities for lots purchased

The buyer will be responsible for loss or damage to lots purchased from the time of collection or the expiry of 5 working days after the day of the auction, whichever is the sooner. Neither DNW nor its servants or agents shall thereafter be responsible for any loss or damage of any kind, whether caused by negligence or otherwise, while any lot is in its custody or under its control.

Loss and damage warranty cover at the rate of 1.5% will be applied to any lots despatched by DNW to destinations outside the UK, unless specifically instructed otherwise by the consignee.

11 Remedies for non-payment or failure to collect purchase

If any lot is not paid for in full and taken away in accordance with Conditions 6 and 10, or if there is any other breach of either of those Conditions, DNW as agent of the seller shall, at its absolute discretion and without prejudice to any other rights it may have, be entitled to exercise one or more of the following rights and remedies:

(a) to proceed against the buyer for damages for breach of contract.

(b) to rescind the sale of that or any other lots sold to the defaulting buyer at the same or any other auction.

(c) to re-sell the lot or cause it to be re-sold by public auction or private sale and the defaulting buyer shall pay to DNW any resulting deficiency in the 'total amount due' (after deduction of any part payment and addition of re-sale costs) and any surplus shall belong to the seller.

(d) to remove, store and insure the lot at the expense of the defaulting buyer and, in the case of storage, either at DNW's premises or elsewhere.

(e) to charge interest at a rate not exceeding 2 percent per month on the 'total amount due' to the extent it remains unpaid for more than 5 working days after the day of the auction.

(f) to retain that or any other lot sold to the same buyer at the sale or any other auction and release it only after payment of the 'total amount due'.

(g) to reject or ignore any bids made by or on behalf of the defaulting buyer at any future auctions or obtaining a deposit before accepting any bids in future.

(h) to apply any proceeds of sale then due or at any time thereafter becoming due to the defaulting buyer towards settlement of the 'total amount due' and to exercise a lien on any property of the defaulting buyer which is in DNW's possession for any purpose.

12 Liability of Dix Noonan Webb and sellers

(a) Goods auctioned are usually of some age. All goods are sold with all faults and imperfections and errors of description. Illustrations in catalogues are for identification only. Buyers should satisfy themselves prior to the sale as to the condition of each lot and should exercise and rely on their own judgement as to whether the lot accords with its description. Subject to the obligations accepted by DNW under this Condition, none of the seller, DNW, its servants or agents is responsible for errors of descriptions or for the genuineness or authenticity of any lot. No warranty whatever is given by DNW, its servants or agents, or any seller to any buyer in respect of any lot and any express or implied conditions or warranties are hereby excluded.

(b) Any lot which proves to be a 'deliberate forgery' may be returned by the buyer to DNW within 15 days of the date of the auction in the same condition in which it was at the time of the auction, accompanied by a statement of defects, the number of the lot, and the date of the auction at which it was purchased. If DNW is satisfied that the item is a 'deliberate forgery' and that the buyer has and is able to transfer a good and marketable title to the lot free from any third party claims, the sale will be set aside and any amount paid in respect of the lot will be refunded, provided that the buyer shall have no rights under this Condition if:

(i) the description in the catalogue at the date of the sale was in accordance with the then generally accepted opinion of scholars and experts or fairly indicated that there was a conflict of such opinion; or

(ii) the only method of establishing at the date of publication of the catalogue that the lot was a 'deliberate forgery' was by means of scientific processes not generally accepted for use until after publication of the catalogue or a process which was unreasonably expensive or impractical.

(c) A buyer's claim under this Condition shall be limited to any amount paid in respect of the lot and shall not extend to any loss or damage suffered or expense incurred by him or her.

(d) The benefit of the Condition shall not be assignable and shall rest solely and exclusively in the buyer who, for the purpose of this condition, shall be and only be the person to whom the original invoice is made out by DNW in respect of the lot sold.

Conditions mainly concerning Sellers and Consignors

13 Warranty of title and availability

The seller warrants to DNW and to the buyer that he or she is the true owner of the property or is properly authorised to sell the property by the true owner and is able to transfer good and marketable title to the property free from any third party claims. The seller will indemnify DNW, its servants and agents and the buyer against any loss or damage suffered by either in consequence of any breach on the part of the seller.

14 Reserves

The seller shall be entitled to place, prior to the first day of the auction, a reserve at or below the low estimate on any lot provided that the low estimate is more than £100. Such reserve being the minimum 'hammer price' at which that lot may be treated as sold. A reserve once placed by the seller shall not be changed without the consent of DNW. DNW may at their option sell at a 'hammer price' below the reserve but in any such cases the sale proceeds to which the seller is entitled shall be the same as they would have been had the sale been at the reserve. Where a reserve has been placed, only the auctioneer may bid on behalf of the seller.

15 Authority to deduct commission and expenses

The seller authorises DNW to deduct commission at the 'stated rate' and 'expenses' from the 'hammer price' and acknowledges DNW's right to retain the premium payable by the buyer.

16 Rescission of sale

If before DNW remit the 'sale proceeds' to the seller, the buyer makes a claim to rescind the sale that is appropriate and DNW is of the opinion that the claim is justified, DNW is authorised to rescind the sale and refund to the buyer any amount paid to DNW in respect of the lot.

17 Payment of sale proceeds

DNW shall remit the 'sale proceeds' to the seller not later than 35 days after the auction, but if by that date DNW has not received the 'total amount due' from the buyer then DNW will remit the sale proceeds within five working days after the date on which the 'total amount due' is received from the buyer. If credit terms have been agreed between DNW and the buyer, DNW shall remit to the seller the sale proceeds not later than 35 days after the auction unless otherwise agreed by the seller.

18 If the buyer fails to pay to DNW the 'total amount due' within 3 weeks after the auction, DNW will endeavour to notify the seller and take the seller's instructions as to the appropriate course of action and, so far as in DNW's opinion is practicable, will assist the seller to recover the 'total amount due' from the buyer. If circumstances do not permit DNW to take instructions from the seller, the seller authorises DNW at the seller's expense to agree special terms for payment of the 'total amount due', to remove, store and insure the lot sold, to settle claims made by or against the buyer on such terms as DNW shall in its absolute discretion think fit, to take such steps as are necessary to collect monies due by the buyer to the seller and if necessary to rescind the sale and refund money to the buyer if appropriate.

19 If, notwithstanding that, the buyer fails to pay to DNW the 'total amount due' within three weeks after the auction and DNW remits the 'sale proceeds' to the seller, the ownership of the lot shall pass to DNW.

20 Charges for withdrawn lots

Where a seller cancels instructions for sale, DNW reserve the right to charge a fee of 15 per cent of DNW's then latest middle estimate of the auction price of the property withdrawn, together with Value Added Tax thereon if the seller is resident in the UK, and 'expenses' incurred in relation to the property.

21 Rights to photographs and illustrations

The seller gives DNW full and absolute right to photograph and illustrate any lot placed in its hands for sale and to use such photographs and illustrations and any photographs and illustrations provided by the seller at any time at its absolute discretion (whether or not in connection with the auction).

22 Unsold lots

Where any lot fails to sell, DNW shall notify the seller accordingly. The seller shall make arrangements either to re-offer the lot for sale or to collect the lot.

23 DNW reserve the right to charge commission up to one-half of the 'stated rates' calculated on the 'bought-in price' and in addition 'expenses' in respect of any unsold lots.

General Conditions and Definitions

24 DNW sells as agent for the seller (except where it is stated wholly or partly to own any lot as principal) and as such is not responsible for any default by seller or buyer.

25 Any representation or statement by DNW, in any catalogue as to authorship, attribution, genuineness, origin, date, age, provenance, condition or estimated selling price is a statement of opinion only. Every person interested should exercise and rely on his or her own judgement as to such matters and neither DNW nor its servants or agents are responsible for the correctness of such opinions.

26 Whilst the interests of prospective buyers are best served by attendance at the auction, DNW will, if so instructed, execute bids on their behalf. Neither DNW nor its servants or agents are responsible for any neglect or default in doing so or for failing to do so.

27 DNW shall have the right, at its discretion, to refuse admission to its premises or attendance at its auctions by any person.

28 DNW has absolute discretion without giving any reason to refuse any bid, to divide any lot, to combine any two or more lots, to withdraw any lot from the auction and in case of dispute to put up any lot for auction again.

29 (a) Any indemnity under these Conditions shall extend to all actions, proceedings costs, expenses, claims and demands whatever incurred or suffered by the person entitled to the benefit of the indemnity.

(b) DNW declares itself to be a trustee for its relevant servants and agents of the benefit of every indemnity under these Conditions to the extent that such indemnity is expressed to be for the benefit of its servants and agents.

30 Any notice by DNW to a seller, consignor, prospective bidder or buyer may be given by first class mail or airmail and if so given shall be deemed to have been duly received by the addressee 48 hours after posting.

31 These Conditions shall be governed by and construed in accordance with English law. All transactions to which these Conditions apply and all matters connected therewith shall also be governed by English law. DNW hereby submits to the exclusive jurisdiction of the English courts and all other parties concerned hereby submit to the non-exclusive jurisdiction of the English courts.

32 In these Conditions:

(a) 'catalogue' includes any advertisement, brochure, estimate, price list or other publication;

(b) 'hammer price' means the price at which a lot is knocked down by the auctioneer to the buyer;

(c) 'total amount due' means the 'hammer price' in respect of the lot sold together with any premium, Value Added Tax chargeable and additional charges and expenses due from a defaulting buyer in pounds sterling;

(d) 'deliberate forgery' means an imitation made with the intention of deceiving as to authorship, origin, date, age, period, culture or source which is not shown to be such in the description in the catalogue and which at the date of the sale had a value materially less than it would have had if it had been in accordance with that description;

(e) 'sale proceeds' means the net amount due to the seller being the 'hammer price' of the lot sold less commission at the 'stated rates' and 'expenses' and any other amounts due to DNW by the seller in whatever capacity and howsoever arising;

(f) 'stated rate' means DNW's published rates of commission for the time and any Value Added Tax thereon;

(g) 'expenses' in relation to the sale of any lot means DNW charges and expenses for insurance, illustrations, special advertising, packing and freight of that lot and any Value Added Tax thereon;

(h) 'bought-in price' means 5 per cent more than the highest bid received below the reserve.

33 Vendors' commission of sales

A commission of 15 per cent is payable by the vendor on the hammer price on lots sold.

34 VAT

Commission, illustrations, insurance and advertising are subject to VAT if the seller is resident in the UK.



www.dnw.co.uk

We were established in 1991 and are located in a six-storey Georgian building in the heart of London's Mayfair, just two minutes walk from Green Park underground station.

Our staff of specialists collectively have over 300 years of unrivalled experience on all aspects of numismatics, medals, banknotes and jewellery, including coins of all types, tokens, commemorative medals, paper money, orders, decorations, war medals, militaria, ancient, antique and modern jewellery, wristwatches and pocket watches, objects of vertu and antiquities.

We hold over 20 auctions each year, the full contents of which are published on the internet around one month before the sale date, together with a unique preview facility which is available as lots are catalogued and photographed. Printed auction catalogues are published three weeks prior to each sale.



Jewellery viewing room

Our offices, open from 9.30am-5pm, Monday to Friday, include viewing rooms, normally enabling us to offer viewing prior to each auction.

Auctions are held in our premises at 16 Bolton Street, Mayfair, where sales may be attended in person. Free online bidding is available using our own live bidding system or by placing commission bids, all of which is available via our website at www.dnw.co.uk

We look forward to welcoming clients to Bolton Street and assure you of a warm reception.



Dix Noonan Webb
London Specialist Auctioneers

16 Bolton Street, Mayfair,
London W1J 8BQ

www.dnw.co.uk

