

NOONANS
MAYFAIRS

JEWELLERY, WATCHES,
SILVER & OBJECTS OF VERTU

11 JUNE 2024 AT 12 NOON



FEATURED ABOVE
LOT 346
A SAPPHIRE AND
DIAMOND 'DOPPIO
CUORE' NECKLACE,
RING AND EAR CLIPS
BY BULGARI

BACK COVER
LOT 440
ROLEX. A STAINLESS
STEEL AUTOMATIC
CHRONOGRAPH
WRISTWATCH WITH
BRACELET, DAYTONA,
CIRCA 2009

AUCTION

AN AUCTION OF:
JEWELLERY, WATCHES, SILVER & OBJECTS OF VERTU

DATE:
11 JUNE 2024 AT 12 NOON

CONTACTS

GENERAL AUCTION ENQUIRIES
AUCTIONS@NOONANS.CO.UK

JEWELLERY & WATCH ENQUIRIES
JEWELLERY@NOONANS.CO.UK

ACCOUNT ENQUIRIES
ACCOUNTS@NOONANS.CO.UK

BANK DETAILS

BANKERS: LLOYDS
ADDRESS: PICCADILLY, LONDON
SORT CODE: 30-96-64
ACCOUNT NO.: 00622865
SWIFT CODE: LOYDGB2L
IBAN: GB70LOYD30966400622865
BIC: LOYDGB21085

BOARD OF DIRECTORS

PIERCE NOONAN
CHAIRMAN AND CEO

NIMROD DIX
DEPUTY CHAIRMAN

ROBIN GREVILLE
CHIEF OPERATING OFFICER

CHRISTOPHER WEBB
CLIENT LIAISON DIRECTOR (NUMISMATICS)

AUCTION AND CLIENT SERVICES

PHILIPPA HEALY
HEAD OF ADMINISTRATION (ASSOCIATE DIRECTOR)
PHILIPPA@NOONANS.CO.UK
T. 020 7016 1775

ANNA HOPPER
ACCOUNTS AND ADMINISTRATION
ANNA@NOONANS.CO.UK
T. 020 7016 1700

SASHA CHOWN
ADMINISTRATOR
SASHA@NOONANS.CO.UK
T. 020 7016 1700

CHRISTOPHER MELLOR-HILL
HEAD OF CLIENT LIAISON (ASSOCIATE DIRECTOR)
CHRISTOPHER@NOONANS.CO.UK
T. 020 7016 1771

JAMES CARVER
CLIENT LIAISON
JBC@NOONANS.CO.UK
T. 020 7016 1770

CHRIS FINCH HATTON
CLIENT LIAISON
FINCH@NOONANS.CO.UK
T. 020 7016 1754

JAMES KING
SALEROOM AND FACILITIES MANAGER
JAMES@NOONANS.CO.UK
T. 020 7016 1755

IAN ANDERSON
CHIEF TECHNOLOGY OFFICER
(ASSOCIATE DIRECTOR)
IAN@NOONANS.CO.UK
T. 020 7016 1751

JEWELLERY SPECIALISTS

FRANCES NOBLE FGA DGA
HEAD OF JEWELLERY DEPARTMENT
(ASSOCIATE DIRECTOR)
FRANCES@NOONANS.CO.UK
T. 020 7016 1781

RACHEL BAILEY FGA DGA
JEWELLERY SPECIALIST
RACHEL@NOONANS.CO.UK
T. 020 7016 1784

LAURA SMITH FGA DGA
JEWELLERY SPECIALIST
LAURA@NOONANS.CO.UK
T. 020 7016 1782

JESSICA EDMONDS FGA DGA
JEWELLERY SPECIALIST
JESSICA@NOONANS.CO.UK
T. 020 7016 1783

WATCH SPECIALIST

JOANNE LEWIS
WATCH SPECIALIST
JOANNE@NOONANS.CO.UK
T. 020 7016 1785

OBJECTS OF VERTU SPECIALIST

MICHAEL WELCH
SPECIALIST
MICHAEL@NOONANS.CO.UK
T. 020 7016 1700



ORDER OF SALE

JEWELLERY, WATCHES SILVER & OBJECTS OF VERTU

TUESDAY 11 JUNE AT 12 NOON

JEWELLERY	1-386
WATCHES	387-468
SILVER & OBJECTS OF VERTU	469-526

VIEWING

MONDAY 3 JUNE **TRADE VIEWING BY APPOINTMENT ONLY** 10 AM-4.30 PM
THURSDAY 6 JUNE 10 AM-4.30 PM
FRIDAY 7 JUNE 10 AM-4.30 PM
SUNDAY 9 JUNE 12 NOON-4 PM
MONDAY 10 JUNE 10 AM-4.30 PM
NO VIEWING ON SALE DAY

ALL LOTS ARE AVAILABLE TO VIEW ONLINE WITH FULL ILLUSTRATIONS
AND CONDITION REPORTS AT WWW.NOONANS.CO.UK

FREE VALUATION DAYS

PLEASE CALL 020 7016 1700 OR EMAIL JEWELLERY@NOONANS.CO.UK FOR AN APPOINTMENT

BERKHAMSTED

13 JUNE 10 AM-1.30 PM
TOWN HALL
196 HIGH STREET
HERTFORDSHIRE HP4 3AP

BLACKHEATH

30 MAY & 11 JULY 10 AM-2 PM
CLARENDON HOTEL
MONTPELIER ROW,
BLACKHEATH VILLAGE, SE3 0RW

BRIDPORT

5 JULY 10 AM-2 PM
THE BULL HOTEL
34 EAST STREET, DORSET DT6 3LF

BURY ST EDMUNDS

17 JUNE 11 AM-4 PM
THE ANGEL HOTEL
3 ANGEL HILL, SUFFOLK IP33 1LT

HAMPSTEAD

26 JUNE 11 AM-4 PM
BURGH HOUSE
NEW END SQUARE
LONDON NW3 1LT

KINGSBRIDGE

21 JUNE 10 AM-2 PM
HARBOUR HOUSE
THE PROMENADE, DEVON TQ7 1JD

LUDLOW

22 JULY 10 AM-3 PM
THE FEATHERS HOTEL
SHROPSHIRE SY8 1AA

MARLOW

25 JUNE 10 AM-3 PM
DANESFIELD HOUSE HOTEL
HENLEY ROAD, MEDMENHAM
BUCKINGHAMSHIRE SL7 2EY

PETERSFIELD

4 JULY 10 AM-2 PM
SKY PARK FARM
HAMPSHIRE GU31 5PT

RICHMOND-ON-THAMES

27 JUNE 10 AM-3 PM
RICHMOND HILL HOTEL
144-150 RICHMOND HILL
SURREY TW10 6RW

SHAFTESBURY

20 JUNE 10 AM-2 PM
GROSVENOR ARMS HOTEL
HIGH STREET, DORSET SP7 8JA

WELLS

19 JUNE 10 AM-2 PM
THE SWAN HOTEL
SADLER STREET
SOMERSET, BA5 2RB

SUMMARY OF INFORMATION FOR BUYERS

REGISTERING TO BID

New clients must register online to bid (whether in person or in absentia). This can be done via our website www.noonans.co.uk

Registrations will be subject to due diligence and Noonans reserves the right to cancel registrations.

Once registered, any client bidding for the first time online will need to enter their card details so that a security check can be performed to authorise you to bid (www.noonans.co.uk >Your Account > Account Authorisation). This check is secure, your card details are not seen by us and no funds will be deducted.

BIDDING PRIORITY

Please note that we prioritise executing commission bids as early as possible in order to secure the lot for you at the cheapest possible price. It is therefore entirely possible that a lot can sell at your top bid to another bidder. To avoid this happening we offer an optional 'Plus 1' bidding increment facility, whereby if the bidding is against you at your maximum bid the auctioneer will execute one further bid on your behalf. Please note that in the event of identical top bids priority is given to the first bid received.

PLACING BIDS

LIVE BIDDING VIA WWW.NOONANS.CO.UK

You may bid in real time from your computer or mobile device. We provide an optional live video and audio feed of the auctioneer, allowing you to participate in much the same way as attending the auction. You may see your invoice and pay online directly after you've finished bidding. **There is no additional charge for this facility.**

ADVANCE BIDDING VIA WWW.NOONANS.CO.UK

We strongly advise this method if you wish to leave bids in advance as it is the easiest, most accurate and flexible way to leave your bids and gives you total control over them right up to the point that the lot is offered for sale. Bids made online cannot be seen by others and only become live at the point the lot is being sold. Up until this time your bids can be easily altered or cancelled. An automated email is sent to confirm any changes made. **There is no additional charge for online bidding.**

ADVANCE BIDDING VIA POST, EMAIL OR TELEPHONE

Whilst we are still happy to execute all bids submitted to us using post, email or telephone, it should be noted that all bids left with us in these ways will be entered at our offices using exactly the same bidding facility to which all our clients have access. **There is, therefore, no better way of ensuring the accuracy of your advance bids than to place them yourself online.**

If you are registered with Noonans you may bid by email to bids@noonans.co.uk or by telephone to 020 7016 1700.

All bids placed by email or telephone must be received before 4 PM on the day preceding the sale.

A bidding form is included in the back of this catalogue. If you wish to use this please fill it in carefully, to include all relevant information. Please ensure that you post this form so that it arrives, at the latest, the day before the sale.

BIDDING IN THE AUCTION ROOM

You are very welcome to attend the auction and bid in person if you are registered with Noonans. Please note that the auction room is situated on the third floor of a Georgian building which doesn't have a lift. You may pay for and collect your lots during the auction.

SALEROOM NOTICES

Should the description of a lot need to be amended after the publication of this catalogue, the amendments will appear automatically on the Noonans website, www.noonans.co.uk. All such amendments are also incorporated in the List of Saleroom Notices pertaining to this auction which are posted separately on the website. The auctioneer will refer to any notices at the time any affected lot is offered for sale.

CATALOGUE ILLUSTRATIONS & THE INTERNET

Prospective bidders are reminded that the Noonans website features high-resolution colour illustrations of every lot in this auction. There may also be additional illustrations of any lot.

BUYERS' PREMIUM

The rate for this sale is 24% of the Hammer Price (+ VAT where applicable).

IMPORTATION VAT

Lots marked 'X' are subject to importation VAT of 5% on the Hammer Price unless re-exported outside the UK, as per Noonans Terms & Conditions of Business.

From 1 January 2021 importation VAT may be levied by EU countries on lots sold by Noonans and subsequently imported into those countries. Although Noonans is unable to advise buyers on customs regulations in their country of domicile, there is further information regarding EU importation VAT rates for collectable items in the Terms and Conditions published on the Noonans website.

ARTISTS RESALE RIGHTS (DROIT DE SUITE)

Droit de Suite is a royalty payable to a qualifying artist or their estate every time the artist's work is sold at auction or by an art market professional during the artist's lifetime and for a period of up to 70 years following the artist's death. Royalties are calculated on a sliding percentage scale based on the hammer price. Lots subject to this royalty payment are marked with ARR in the catalogue.

TREATED GEMSTONES

It is common practice for many gemstones to be subject to various treatments to improve their appearance. Sapphires and rubies are routinely heat treated to improve their colour and clarity, emeralds may be treated with oils or resin, other gemstones may be subject to treatments such as staining, irradiation or coating. Jade may be bleached, polymer/resin filled or dyed, or a combination of treatments used. Bidders should be aware that, unless stated to the contrary in the catalogue description, it should be assumed that the gemstones may be treated. Where reports are provided from gem laboratories, the opinions as to gradings and treatments of stones may differ slightly between laboratories and Noonans cannot be held responsible for any discrepancies.

UNMOUNTED GEMSTONES

Please note that VAT at 20% is payable on the Hammer price for unmounted diamonds, rubies, sapphires and emeralds. Relevant lots are marked with an asterisk *. See www.gov.uk/guidance/the-margin-and-global-accounting-scheme-vat-notice

EXPORT OF ORGANIC MATERIALS

Lots marked 'Y' are subject to CITES legislation. Organic materials, such as coral and tortoiseshell may be covered by CITES legislation and this may or may not impact export to other countries. Please be aware that it is the buyer's responsibility to arrange for any CITES export licences for their purchases. Please see www.cites.org. In addition to CITES, mother-of-pearl, coral, and tortoiseshell, if imported into the USA, will be subject to USA Fish and Wildlife regulations.

WATCHES

All watches are sold as viewed.

Please note that watches with water-resistant cases have been opened to identify the movement and so will no longer be water-resistant unless a service to reseal the watch is undertaken at the buyer's expense.

Watches may have been repaired during the course of their lifetime and Noonans do not guarantee the authenticity of any individual component parts.

In some circumstances we are unable to ship the watch with its strap due to certain import restrictions regarding material derived from endangered or protected species.

PRICES REALISED

The hammer prices of lots sold at Noonans auctions are posted at www.noonans.co.uk in real time and telephone enquiries are welcome from 9 AM on the day after the auction.

PAYMENT

You may access your invoice shortly after the hammer has fallen on your last lot. As we weigh lots at the time of cataloguing most shipping is already calculated, enabling you to settle your account and receive your lots in a timely fashion. Auction attendees may pay and collect during the course of the auction as soon as they have bid on their last lot.

[Full Terms and Conditions of Business](#) are available to read in the back of this catalogue and on our website.

CONTACTS

GENERAL SUPPORT

auctions@noonans.co.uk
020 7016 1700 or from overseas
(+44) 20 7016 1700

WEBSITE AND LIVE BIDDING SUPPORT

[Ian Anderson](mailto:ian@noonans.co.uk)
ian@noonans.co.uk
020 7016 1700 or from overseas
(+44) 20 7016 1700

NOONANS
MAYFAIR

CONSIGNING NOW

JEWELLERY, WATCHES, SILVER & OBJECTS OF VERTU

10 SEPTEMBER 2024

CLOSING FOR ENTRIES 1 AUGUST

ALL ENQUIRIES: PLEASE CALL 020 7016 1700 OR EMAIL [JEWELLERY@NOONANS.CO.UK](mailto:jewellery@noonans.co.uk)



AN ART DECO AQUAMARINE AND DIAMOND DOUBLE CLIP BROOCH, CIRCA 1935
SOLD ON 12 MARCH 2023 HAMMER PRICE: £15,000

JEWELLERY

LOT
No 17





1 AN EARLY 20TH CENTURY ART NOUVEAU GEM-SET PENDANT, the bloomed gold pendant of whiplash scroll design, centred with an oval mixed-cut sapphire and with pearl and old single-cut diamond detail, the whole suspended by a ropetwist chain, mounted in gold, (pearls untested), pendant length 45mm. £600–£800



2 AN EARLY 20TH CENTURY AMETHYST AND SEED PEARL PENDANT ON CHAIN, the circular-cut amethyst within a surround of textured flowerheads with seed pearl highlights, terminating in a pear-shaped amethyst drop, mounted in gold, the whole suspended from a belcher-link chain stamped '9CT', length 47.5cm. £260–£300



3 A SMALL COLLECTION OF ANTIQUE SEED PEARL AND TURQUOISE JEWELLERY, comprising a bracelet, two brooches and a locket, all mounted in gold, bracelet and bar brooch stamped '15CT', bracelet length 18.5cm. (4). £500–£700

4 A GEM-SET NECKLACE, the cable-link chain spectacle-set with circular-cut rubies, sapphires and peridots, length 48cm. £400–£600

According to a PMI test on an XRF Analyzer, the chain is testing as 18ct gold.



5

AN ART NOUVEAU PENDANT ON CHAIN, FRENCH, CIRCA 1900, the heart-shaped pendant depicting a female profile with gem-set flowerhead decoration, on a blue and green plique-à-jour enamel ground, with rose-cut diamond border and similarly-set bale, suspended from a fancy-link chain, mounted in gold, French assay marks, pendant with maker's mark possibly for Gaston Laffitte, *pendant length 30mm.* £1,200–£1,500

Gaston Lafitte was an important French Art Nouveau jeweller recognised for his strong motifs and winged female figures, as well as his excellent use of plique-à-jour enamels. Whilst little is known of Lafitte, he exhibited regularly at the annual Paris Salons, and was still producing works into 1904.

Literature:

Vivienne Becker: *Art Nouveau Jewellery*, pub Thames & Hudson, London 1985, page 222, plates 22, 124.



6

A CITRINE FIVE STONE RING, the graduated row of mixed-cut citrines with diamond highlights between, to a scrollwork mount, stamped '18CT', *ring size P½.* £400–£600



7

AN ART NOUVEAU GOLD AND HORN HAIR PIN, FRENCH, the pierced gold mount of scrolled foliate design, with bloomed finish and to a double prong horn pin, French assay mark, partial maker's mark, *length 7cm.* £600–£800

8

A CHALCEDONY AND ENAMEL RING, converted from a mid 19th century clasp, set with a cushion-shaped green chalcedony within a bead and wirework surround with red and white enamel flowerheads, to a reeded hoop, hoop with French import marks, *ring size M–N.* £500–£700

According to a PMI test on an XRF Analyzer, the ring is testing as 18ct gold.



9

A SEED PEARL NECKLACE, the fancy-link chain suspending a fringe of seed pearl cluster drops, *length 48.5cm.* £400–£600

According to a PMI test on an XRF Analyzer, the chain is testing as 20ct gold.





10

A GOLD COIN BROOCH, the George III guinea, 1776, mounted as a brooch with trefoil bead detail to the cardinal points, obverse bearing presentation inscription, width 36.5mm. £400-£600

11

A LONG GUARD CHAIN WITH A SOVEREIGN PENDANT, the belcher-link chain suspending a George III gold sovereign, 1817, chain length 163cm. £500-£700



12

A PAIR OF HALF SOVEREIGN CUFFLINKS, the George V half sovereigns, 1911, collet-set in 9ct gold mounts with swivel back fittings, UK hallmarks, plaque diameter 21mm. £300-£500

13

A PAIR OF ANTIQUE MOUNTAINEER'S PICKAXE BROOCHES, realistically modelled with rope detailing, length 45mm. £100-£150



14

TWO CHAIN BRACELETS, of belcher and curb-link design, both stamped '750' and with Italian assay marks, lengths 21cm. £800-£1,200





15

THREE OWL BROOCHES, the first, modelled as an owl within a circlet of oak leaves, the second, a pair of owls seated on a branch, both brooches of bicolour textured design, and a further single owl bar brooch, all with cabochon garnet eyes, all stamped '9ct', first width 29mm. £800–£1,000

16

A REGIMENTAL SWEETHEART BROOCH FOR THE 16TH (BEDFORDSHIRE) REGIMENT OF FOOT, set with rose-cut diamonds and polychrome enamel detailing, length 30mm. £200–£300

The Regiment was renamed on 1 July 1881 as The Bedfordshire and Herefordshire Regiment.



17

A LATE 19TH CENTURY BROOCH/PENDANT, the gold Tudor Rose with bloomed finish, unmarked, diameter 34mm. £1,000–£1,500

18

AN ANTIQUE LION MASK STICK PIN, the repoussé disc embossed with a lion mask, the border with Greek inscription, later mounted to a 19th century pin, disc diameter 21mm. £360–£400

According to a PMI test on an XRF Analyzer, the circular disc is testing as 23.76% gold purity, the pin testing as 20.85% purity.



19

AN ENAMEL FLORAL STICK PIN, CIRCA 1900, modelled as two flowers, one pink and one cream, each centred with a rose-cut diamond, encircled by a pink enamelled ribbon reading 'Reminder', mounted in gold, length of terminal 15mm. £80–£100



20

AN ANTIQUE DIAMOND DOG BROOCH, realistically modelled as a running hound, set throughout with rose-cut diamonds and with gem-set cabochon eye, mounted in silver and gold, (later adapted to a stick pin), length 40mm. £150–£200





21

A MID 19TH CENTURY SEED PEARL NECKLACE, the collar interspersed with flowerhead clusters leading to a three-row festoon, set throughout with seed pearls, mounted in gold, fitted case signed Harvey & Gore, length 37.5cm.

£800–£1,000

22

AN EARLY 19TH CENTURY PEARL AND DIAMOND CROSS ON CHAIN, set throughout with half-pearls and with an old brilliant-cut diamond to the centre, suspended by a later unassociated cable-link chain, closed-back settings throughout, mounted in gold, (pearls untested), pendant length 35mm. £400-£600



23

A PAIR OF CULTURED PEARL AND DIAMOND EAR STUDS, each cluster set with a half cultured pearl within a surround of brilliant-cut diamonds, total diamond weight approximately 1.20 carats, length 12mm. £500-£700



24

AN 18CT GOLD SAPPHIRE AND DIAMOND CLUSTER RING, the oval mixed-cut sapphire claw-set within a surround of brilliant-cut diamonds, European convention mark, London assay mark, total diamond weight approximately 1.10 carats, ring size L. £600-£800

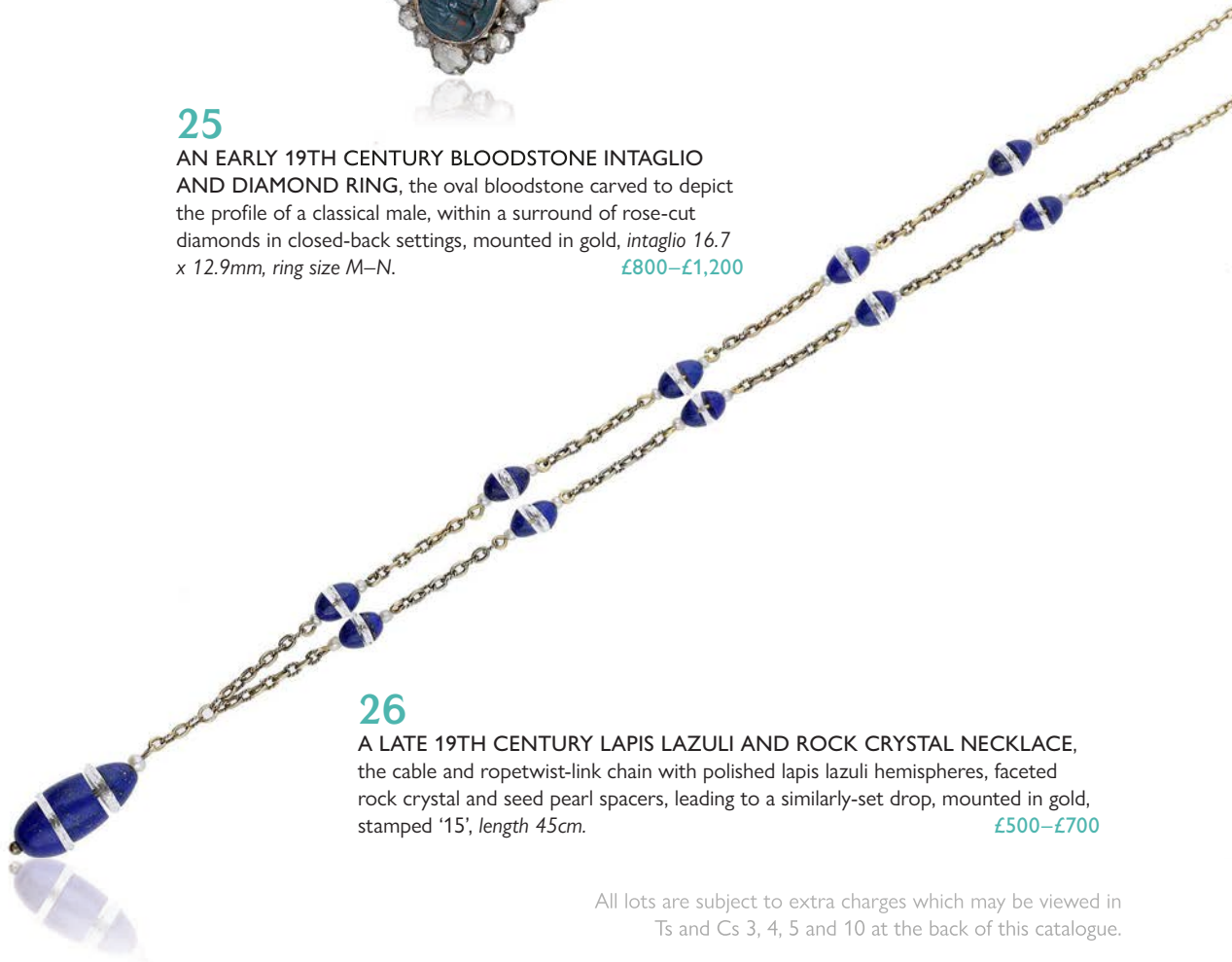


25

AN EARLY 19TH CENTURY BLOODSTONE INTAGLIO AND DIAMOND RING, the oval bloodstone carved to depict the profile of a classical male, within a surround of rose-cut diamonds in closed-back settings, mounted in gold, intaglio 16.7 x 12.9mm, ring size M-N. £800-£1,200

26

A LATE 19TH CENTURY LAPIS LAZULI AND ROCK CRYSTAL NECKLACE, the cable and ropetwist-link chain with polished lapis lazuli hemispheres, faceted rock crystal and seed pearl spacers, leading to a similarly-set drop, mounted in gold, stamped '15', length 45cm. £500-£700





27

A MID 20TH CENTURY FRINGE NECKLACE,
designed as a series of graduated textured links,
stamped '585', length 40cm. £240–£300

28

A FANCY-LINK BRACELET, the woven strap with applied collars
each with bead, ropetwist and wirework decoration, stamped '800',
Portuguese assay mark, length 20cm. £1,200–£1,500



29

A CHAIN NECKLACE, of anchor-link design, stamped '750', Italian assay mark
for Gori & Zucchi (UNOAERRE), length 45.5cm. £400–£600





30

A PAIR OF EARLY 20TH CENTURY SAPPHIRE AND DIAMOND CUFFLINKS, each oval panel set with an old brilliant-cut diamond within a surround of vari-cut sapphires and diamonds, mounted in platinum and gold, stamped '18ct', indistinct maker's mark, total diamond weight approximately 1.40 carats, panel length 17mm. .

£1,000–£1,500

31

A PAIR OF SAPPHIRE CUFFLINKS, the rectangular panels set throughout with circular-cut sapphires within polished borders, T-bar terminals, stamped '18K', panel length 17mm. £500–£700



32

A PAIR OF LAPIS LAZULI CUFFLINKS, the rectangular-shaped lapis lazuli plaques set within pierced polished borders, stamped '585 14K', panel length 17mm.

£300–£500

33

A PAIR OF SYNTHETIC SAPPHIRE CUFFLINKS BY VOURAKIS, double-sided, each of the square-shaped panels channel-set with calibr -cut synthetic sapphires, signed 'VOURAKIS', panel length 14mm.

£400–£600



34 Y

A PAIR OF CULTURED PEARL CUFFLINKS, the cut-cornered panels centred with a cultured pearl on a lozenge-shaped mother-of-pearl ground, with reeded decoration, T-bar terminals, stamped 'K14', panel width 13mm.

£150–£200



35

A **DIAMOND HEART PENDANT**, the openwork heart pavé-set throughout with single-cut diamonds and suspending a central pear-shaped diamond within, suspended from a cable-link chain, *total diamond weight approximately 1.70 carats, length 37cm. £1,000–£1,500*



36

A **SAPPHIRE AND DIAMOND PENDANT**, the openwork heart set with calibr -cut sapphires and graduated brilliant-cut diamonds, the whole suspended by a cable-link chain, mounted in 18ct gold, London hallmark, *pendant length 30mm. £400–£500*



37

A **DIAMOND FIVE STONE RING**, set with a row of baguette-cut diamonds to a plain polished band, mounted in 14ct gold, import mark for London 1984, *total diamond weight approximately 1.25 carats, ring size N. £600–£800*



38

A **DIAMOND DRESS RING, CIRCA 1970**, the openwork cluster set with brilliant and baguette-cut diamonds, to a reeded hoop, *total diamond weight approximately 1.10 carats, ring size I-J. £600–£800*



39

A **SAPPHIRE AND DIAMOND RING, FRENCH**, the bicoloured band of tapered design, set to the front with an oval-cut sapphire and brilliant-cut diamonds to either side, French assay mark, maker's mark, *total diamond weight approximately 0.60 carat, ring size approximately L. £400–£600*



40

A **DIAMOND FLOWERHEAD CLUSTER RING, FRENCH**, set with old brilliant and brilliant-cut diamonds, between trifurcated shoulders, French assay marks, maker's mark, *principal diamond approximately 0.70 carat, total diamond weight approximately 0.95 carat, ring size M. £600–£800*



41

AN AQUAMARINE AND DIAMOND NECKLACE, the curb-link chain leading to a brilliant-cut diamond-set frontispiece, interspersed with similarly-set foliate motifs and suspending a detachable step-cut aquamarine drop, mounted in 18ct gold, rubbed hallmark, *total diamond weight approximately 5.20 carats, length 43.5cm.* £3,400–£4,000

42

A PAIR OF AQUAMARINE AND DIAMOND EARRINGS, the brilliant-cut diamond trefoil surmounts suspending a pear-shaped aquamarine drop, *length 18mm.* £200–£300



43

A PAIR OF VARI-COLOUR SAPPHIRE EAR PENDANTS, set with oval-cut sapphires of pink, purple and blue hues, terminating in a similarly-cut sapphire and diamond cluster drop, stamped 'Au 750', *length 22mm.* £600–£800

44

A PAIR OF AQUAMARINE AND DIAMOND CLUSTER EAR STUDS, the circular-cut aquamarines claw-set within a surround of brilliant-cut diamonds, stamped '18K', *total diamond weight approximately 0.45 carat, diameter 15mm.* £300–£400



45

AN EARLY 20TH CENTURY AQUAMARINE AND DIAMOND BAR BROOCH, the three vari-cut aquamarines spaced by old brilliant and rose-cut diamonds, mounted in platinum, *length 7.5cm.* £1,200–£1,500

EARLY JEWELS

STIRRUP RINGS



46

A MEDIEVAL LATE 13TH CENTURY GOLD AND SAPPHIRE STIRRUP RING, the hoop of D-shaped cross section, the raised triangular-shaped bezel between angled shoulders, inset with the original heart-shaped cabochon sapphire at the apex, *diameter 32mm.* **£2,000–£3,000**

Provenance: This ring was found by a metal detectorist at Woodham Walter, Essex in 2019. It has been recorded on the Portable Antiquities Scheme database Ref: ESS-B604F3 and disclaimed as Treasure.

The village of Woodham Walter is close to All Saints church, Ulting which dates from circa 1150. In 1299 Robert Fitzwalter, Lord of the Manor of Ulting, gave the church to the Abbey at Beeleigh. Robert was knighted in 1274 and was summoned to military service in Scotland and Gascony in France.

Although referred to as 'stirrup rings', a name given in the 19th century comparing their shape to a horse's stirrup, this form of medieval ring actually reflects the pointed arch used in the monumental architecture of the Medieval Gothic period. The simple examples imitate the ogee arches utilised in the Gothic cathedrals, exemplified by the cheviot of St. Denis, evolving into more complex designs as time went on.



47

A MEDIEVAL GOLD SAPPHIRE STIRRUP RING, LATE 13TH/EARLY 14TH CENTURY, the hoop of D-shaped cross-section, with raised triangular-shaped bezel inset at the apex with the original heart-shaped cabochon sapphire, the bezel with angled shoulders and flattened on the opposing sides, tapering towards the base, *diameter 20mm, width 3mm.* **£1,200–£1,400**

Provenance: Ex UK collection, found in Essex prior to 1997.



48

A SILVER GILT PILGRIM BADGE, CIRCA 1500, the openwork cast design of St George on horseback spearing a dragon, the figure of Princess Una standing to the right, the reverse with loop attachment, *diameter 23mm.* £100–£200

Provenance: Ex UK collection, originally found in Kent before 1997. The cult of St George led to George becoming the patron saint of England in the late medieval period. His heart was kept at Windsor and became a popular pilgrimage venue. Most representations are made from pewter, with silver being significantly rarer.



49

A LATE 16TH CENTURY SILVER GILT BADGE, the openwork cast design of St George in armour, standing upon a dragon and holding a curved sword or scimitar in his right arm, a shield in his left, the dragon's head upturned, biting the shield, the reverse with loop attachment, *dimensions 30 x 20mm.* £150–£200

Provenance: Found in Northampton before 1997.



50

A 15TH CENTURY SILVER-GILT FEDE FINGER RING, the bezel comprising a rectangular-shaped panel of two clasped hands, the centrally ridged hoop dividing Lombardic inscription reading 'IHC+NAZAR ENVS REX I', *diameter 23mm, width 10mm.* £200–£300

Provenance: Ex UK collection, found in Essex before 1997.

51

A RARE 16TH CENTURY SILVER VERVEL OR HAWKING RING, the shield-shaped bezel finely engraved with the Royal coat of arms of England and France, quartered, comprising (clockwise) the lions of England and three fleur-de-lis of France, the hoop engraved to the exterior in capitals 'I.BRI', *diameter 8mm, shield 9mm.* £1,000–£1,500

Provenance: This vervel was found in 1993 in Essex.

The Royal arms are those of Queen Elizabeth I, but the inscription appears to relate to King James of Britain.



Actual size

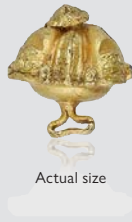


52

AN EARLY 17TH CENTURY SILVER VERVEL OR HAWKING RING, the annular ring inscribed in capitals, +AMBROS* +PVDSE.*. *diameter 14mm, width 3mm, depth 1mm.* £600–£800

Provenance: The vervel was found on 4 December 2022 at Hambleton, North Yorkshire and recorded as Treasure case number 2023T303.

Ambrose Pudsey was christened on 2 October 1595 in Bolton Castle, Yorkshire. His father was William Pudsey, his mother Elizabeth Roxby. He married in 1615 and had a son and two daughters. He died in 1629. The family were known to be Catholic recusants and Royalists and were stripped of their landholdings after the English Civil War.



Actual size

53

A 16TH CENTURY ELIZABETHAN GOLD BUTTON, of hollow cast domed form, the front richly ornamented and segmented, a rosette to the pinnacle, with six small blue enamelled pomegranates around the base, (with enamel loss), the reverse with loop attachment, diameter 13mm. **£100–£200**

Provenance: From a UK collection, originally found in Essex before 1997.



Actual size

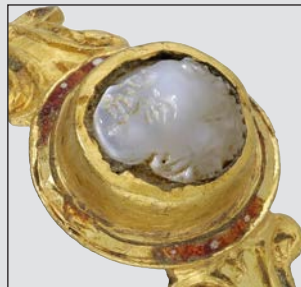
54

A 16TH CENTURY ELIZABETHAN GOLD RING SET, the circular bezel set with a high relief white chalcedony cameo carved to depict the head of Cupid, between trifurcating scrolled shoulders, traces of red enamel interspersed with white dots surrounding the bezel, ring size H. **£800–£1,000**

Provenance: From a UK collection, originally found by a metal detector in Essex before 1997.

Cameos of Cupid or Eros were a popular feature in jewellery during the Renaissance era.

According to a PMI test on the XRF Analyzer, the gold is testing as 90.74% purity.





Actual size

55

AN EARLY 17TH CENTURY GOLD, ENAMEL AND ROCK CRYSTAL RING, the central table-cut rock crystal set within a rectangular box bezel, the sides decorated with rounded indents of pale blue enamel, four to the outer sides, three to the inner sides, the underbezel similarly enamelled, the arched D-shaped hoop with high central ridge inset with conforming pale blue enamel to each side, the lower section of the hoop plain and slightly tapering, *diameter 19mm, ring size K.* **£1,200–£1,500**

Provenance: This ring was found by a detectorist at Harlaxton in Lincolnshire in 2021. It has been recorded on the Portable Antiquities Scheme database Ref: LIN-CCA6D4 and disclaimed as Treasure.

The original manor house at Harlaxton dated from the 14th century and was acquired by Daniel de Ligne in 1619, a Protestant from Flanders, an affluent cloth merchant who was knighted by James I in 1620. He married Elizabeth de la Fountayne, and the De Ligne family remained here until 1738.



THE PROPERTY OF A LADY

A PERSONAL COLLECTION OF POSY RINGS

"The posies in your rings, which are always next to the finger, not to be seen of him that holdeth you by the hands, and yet known to you that wear them on your hands" - John Lyly, Euphues, 1580.

The name 'posy ring' is derived from the 'posy' or motto usually engraved around the hoop of a gold band ring, and they were produced from the 14th to the 18th centuries, reaching the peak of their popularity in the 17th century when they mostly took the form of a D-section rounded band, plain to the exterior, with the posy inscribed to the inner surface in italic, cursive script.

Posy rings were sometimes given as gifts to friends to mark significant occasions, but their most common use was as gifts of love and betrothal/marriage, with the posy - often a rhyming couplet - having a romantic theme. The repetition of particularly posies indicates that goldsmiths and their customers made use of published compendiums or commonplace books such as the 1658 '*The mysteries of Love or the Art of Wooing*', or the 1674 '*Love's Garland or posies for rings, handkerchiefs and such pretty tokens as lover's send their loves*'. The more unusual inscriptions perhaps indicating the ability to choose or write a posy would be a demonstration of the literary flair of an educated person. The placing of the posy to the interior of the band makes the posy (and its sentiment) a secret shared only between giver and receiver.



56

A GOLD POSY RING, EARLY 17TH CENTURY, the D-shaped hoop decorated to the exterior with horizontal grooves, inscribed to the interior in capitals '+REMEMBER THE GIVER'; diameter 20mm, band width 5mm, ring size M½. £600-£800

Provenance: Ex UK collection.

According to a PMI test on the XRF analyzer the gold is testing as purity 79.81%.

For other examples of rings bearing this posy see the British Museum (ref: AF.1369), the Museum of London (ref. ref: 62.4/176), the Griffin Collection (Inv. no. 01894), and the Portable Antiquities Scheme (ref. IOW-FA3E30).



57

A GOLD POSY RING, CIRCA 1600-1640, the broad band decorated to the exterior with diagonal bands with ribbed beading between, the interior inscribed in capitals 'I LIKE MY CHOIES'; diameter 22mm, width 6mm, ring size R. £1,000-£1,400

Provenance: Ex UK collection.

According to a PMI test on the XRF analyzer, the gold is testing as purity 86.52%.

This was a popular posy - it can be seen on various other posy rings including examples in the British Museum (ref. 1961,1202.29, 1961.1202.32, and 1961,1202.37), the Griffin Collection (Inv. nos. 01893 and 03034) and the Portable Antiquities Scheme.



58

A GOLD POSY RING, CIRCA 1660-1680, the hoop of D-shaped cross section, inscribed to the interior in italics 'As god decreed so we agreed', diameter 23mm, band width 6mm, ring size S. £800-£1,000

Provenance: Ex UK collection.

According to a PMI test on the XRF analyzer, the gold is testing as purity 87.98%

This was a popular posy and can be seen on other rings including examples in the British Museum (ref. 1961,1202,115, AF.1199 and AF.1203), the Ashmolean Museum, Oxford (ref. Cf. No 781 and AN1933.1576), the Museum of London (ref. 62.4/24), the Victoria and Albert Museum (ref. 377-1864 and 383-1864) and the Portable Antiquities Scheme.



59

A GOLD POSY RING, CIRCA 1660–1680, the D-shaped band inscribed to the interior in italics 'in thee my choice I do rejoice', maker's mark 'TS', diameter 21mm, band width 4mm, ring size Q½.

£600–£800

Provenance: Ex UK collection.

According to a PMI test on the XRF analyzer, the gold is testing as purity 91.46%.

This was a popular posy - it can be seen on various other posy rings including examples in the British Museum (ref. 1961,1202.40, 1961,1202.42, AF.1298, AF.1299), the Griffin Collection (Inv. no. 05079), the Ashmolean Museum, Oxford (ref. AN1933.1593) and on the Portable Antiquities Scheme.



60

A GOLD POSY RING, CIRCA 1660–1680, the wide rectangular-shaped hoop inscribed to the interior in italics 'Godlye .love .will .not .remove', maker's mark 'R' in an oval cartouche, diameter 21mm, width 5mm, ring size R.

£600–£800

Provenance: Ex UK collection.

According to a PMI test on the XRF analyzer the gold is testing as purity 91.02%.

For other examples of rings bearing the same posy see the Ashmolean Museum, Oxford, Evans Collection (ref. AN1933.1586), the British Museum (ref. AF.1252, and AF.1253), the Griffin Collection (Inv. nos. 03486 and 03019), with a further close variation in the British Museum (ref. 1961,1202.178).



61

A GOLD POSY RING, CIRCA 1660, the hoop of rectangular cross section, inscribed to the interior 'A vertuous wife preserveth life', diameter 20mm, band width 5mm, ring size N½.

£800–£1,000

Provenance: Ex UK collection.

According to a PMI test on the XRF analyzer, the gold is testing as purity 80.64%.

For other recorded of rings bearing this posy see the British Museum (ref.1961,1202,340) and the Portable Antiquities Scheme (ref. SWYOR-D36764).



62

A GOLD POSY RING, CIRCA 1680–1700, the D-shaped hoop inscribed to the interior in italics '*When love doth remayne - Parting is vayne', diameter 22mm, band width 5mm, ring size S.

£800–£1,000

Provenance: Ex UK collection.

According to a PMI test on the XRF analyzer the gold is testing as purity 92.56%.

An unusual posy, with no other recorded example found.



63

A GOLD POSY RING, CIRCA 1700-1720, the D-shaped band inscribed to the interior in italics 'Remember me, as I do thee', maker's mark probably 'm', diameter 21mm, band width 5mm, ring size M. £800-£1,000

Provenance: Ex UK collection.

According to a PMI test on the XRF analyzer the gold tested as purity 77.43%.

This is an unusual posy with no identical recorded example found.



64

A GOLD POSY RING, EARLY 18TH CENTURY, the D-shaped hoop of hollow construction, inscribed to the interior in script 'In god and thee rest my felicity' followed by maker's mark 'PR' in a cartouche, diameter 9.5mm, band width 4mm, ring size T. £500-£700

Provenance: Ex UK collection.

According to a PMI test on the XRF analyzer, the gold tested as purity 85.65%.

This is an unusual posy.

65

A GOLD POSY RING, 18TH CENTURY, the plain hoop of rectangular cross section, inscribed to the interior in large script 'All that I desier of thee is to feare god and love' followed by maker's mark 'IA' in a cartouche, diameter 21mm, band width 5mm, ring size O. £600-£800

Provenance: Ex UK collection.

According to a PMI test on the XRF analyzer the gold is testing as purity 85.14%.

For another recorded example of a ring bearing the same posy see the British Museum (ref.1961,1202,283), late 17th century in date.



66

A GOLD POSY RING, 18TH CENTURY, the D-shaped hoop inscribed to the interior in italics 'Forget not he who loveth thee', diameter 23mm, band width 4mm, ring size U½. £600-£800

Provenance: Ex UK collection.

According to a PMI test on the XRF analyzer the gold is testing as purity 76.39%.

For another example of a ring bearing the same posy see the British Museum (ref. AF.1232).

OTHER PROPERTIES



67

A GOLD POSY RING, LATE 16TH/EARLY 17TH CENTURY, inscribed to the inside in capitals '+VIVE VT VIVAS', (live that you may live), decorated to the exterior with angled grooves, ring size J. £600–£800

Provenance: Ex UK collection, found in Essex before 1997.

For further examples of rings bearing the same inscription see Timeline Auctions, (February 2022, lot 445 and May 2023, lot 412) and the Portable Antiquities Scheme (ref. DUR-23C436).



68

A GOLD POSY RING, 17TH CENTURY, the D-shaped band with seriffed Roman capitals inscription to the interior '+AS.I.CRAVE. SO.LET.ME.HAVE.', ring size P. £600–£800

Provenance: Ex UK collection, found by a detectorist in Essex pre-1997.

This posy ring bears an interesting and unusual inscription: only one other posy uses the verb 'crave', see British Museum (ref. 1961,1020.236).



69

A LATE 17TH CENTURY GOLD POSY RING, the D-shaped hoop inscribed to the interior in italics 'A mind content cannot repent', diameter 19.5mm. £600–£800



Provenance: This ring was discovered by a metal detectorist in Lincolnshire in 2018. It has been recorded on the Portable Antiquities Scheme database, ref: LANCUM-E16C56, and disclaimed as Treasure.

70

A GOLD POSY RING, EARLY 19TH CENTURY, the band of D-shaped cross-section, the interior inscribed 'Hearts united live contented' in italic cursive script, maker's mark a rampant lion followed by 'wih', ring size U. £200–£300

Provenance: This ring was found in East Anglia.



This was a popular posy - it can be seen on various other posy rings including examples in the British Museum (ref. AF.1268, AF.1269, AF.1270 and AF.1271), the Griffin Collection (Inv. no. 05088), and Museum of London (ref. 62.4/4 and 62.4/95) and the Portable Antiquities Scheme.



71

A LATE 19TH CENTURY ONYX AND PEARL MOURNING BROOCH, the onyx cabochon with applied star motif, the central half-pearl within a surround of rose-cut diamonds, mounted in gold, (pearl untested), diameter 20mm.

£300–£400



72

AN EARLY 19TH CENTURY MEMORIAL RING, the glazed hairwork panel within a surround of seed pearls and black enamel border, to bifurcated shoulders and with chased foliate decoration throughout, the under-bezel inscribed 'John Lewin Sheppard Ob. 10. aug 1821. at. 27'; mounted in gold, ring size N.

£150–£200



73

A 19TH CENTURY GOLD COILED SERPENT MEMORIAL RING, decorated to the exterior with scaled body inlaid with black enamelling, the eyes inset with faceted diamonds, the interior inscribed in English round hand 'Judith (g)ender? 24th March 1838 ae 58'; diameter 20mm, ring size 0½.

£300–£500

Provenance: Ex UK collection.

According to a PMI test on the XRF analyzer the gold is testing as purity 76.12%.



74

A LATE 18TH CENTURY MEMORIAL RING, the oval glazed panel revealing a hairwork panel with applied initials 'AH', with blue and white enamel border inset with lettering 'OB 24 SEP 1789 AE 92', between scroll engraved shoulders, mounted in gold, ring size P.

£600–£800



75

THREE 19TH CENTURY SEAL FOBS, comprising a silver seal engraved with a wheat sheaf within ornate openwork mount, another silver example with coat of arms of three boar heads in an oval cartouche with scrolled surround and pair of wings above, and a brass-mounted glass seal with a standing figure of Hope holding an anchor, various lengths.

£200–£300

Provenance: All from a UK collection.

76

AN 18TH CENTURY GOLD SEAL RING, the circular bezel engraved with the arms of the family of GRENVILLE, a shield with green quarter panels and a central cross of silver bearing five red roundels (vert on a cross argent, five torteaux). a helmet placed above the shield with a sheaf of corn as the crest, an inscription around reads 'Sigillum georg de grenvil', diameter 23mm, ring size approximately T. £6,000–£8,000

Provenance: This ring was found in May 2023 near Aylesbury, Buckinghamshire by metal detectorist Tom Clark. The ring was not deemed to be treasure as it is less than 300 years old. The close proximity of the find spot to the residence of George Grenville's eldest son suggests that he may have lost the ring, rather than his father. The ring has been resized with a larger band, with evidence of re-engraving to some details in the family arms. Using a PMI test on the XRF analysis, the seal is testing as gold purity of 88.52% whilst the band is testing as gold purity of 97.07%. The ring was clearly an important family heirloom passing from father to son.

The Right Honourable George Grenville was born 14 October 1712 and died 13 November 1770. George was the member of Parliament for Buckingham from 1741–70 and was Prime Minister between 16 April 1763–10 July 1765. He tried to reduce Britain's growing debt by raising revenue in the American colonies. This was to help towards the cost of the previous Seven Year War between France and Britain by introducing the Sugar Act, the Currency Act and the Stamp Act. These new laws were strongly objected to by the colonists and stirred up protest in America, causing Grenville to be dismissed by George III. The Stamp Act was repealed in 1766, but concerns over taxation ultimately led to the American Revolutionary war of 1775–1783. George Grenville's eldest son, also called George, was born in 1753 and followed in his father's footsteps by becoming a member of Parliament for Buckingham. He served as Lord Lieutenant of Ireland and was given the title of Marquess of Buckingham. He died in 1813.





77

A MID 19TH CENTURY GOLD AND DIAMOND LOCKET, the oval bloomed gold locket with raised central panel set with an old cushion-shaped diamond, *diamond weight approximately 0.80 carat, length 5.5cm.* £1,500–£2,000



78

A MID TO LATE 19TH CENTURY NOVELTY BROOCH, the circular brooch with bloomed finish and applied decoration realistically modelled as a bird and nest, with three seed pearl 'eggs', mounted in gold, glazed compartment verso, *diameter 35mm.* £300–£400



79

A MID TO LATE 19TH CENTURY LOCKET, the central panel with engraved foliate decoration and opening to reveal a glazed compartment, to a stylised laurel wreath surround and graduated beadwork border, glazed verso and with inscription, semi-bloomed finish, mounted in gold, *length 45mm.* £300–£400



80

AN EARLY 20TH CENTURY DIAMOND BRACELET, the openwork flowerhead centrepiece set with old brilliant-cut diamonds, to an expandable fancy-link scroll bracelet, adapted, stamped '585', possible import mark for 1933 former Yugoslavia, *minimum diameter approximately 5cm.* £500–£700



81

A 19TH CENTURY DIAMOND SPRAY BROOCH, PROBABLY AMERICAN, realistically modelled and with a butterfly to the stem, set with old brilliant and rose-cut diamonds, the butterfly with red cabochon eye, mounted in gold, stamped '18', principal diamond weight approximately 0.85 carat, length 7cm. **£1,800–£2,200**



82

TWO ANTIQUE GOLD BROOCHES, each 15ct gold panel with bead, wire and ropetwist decoration throughout, one with glazed compartment and personal inscription to the reverse, both with Birmingham hallmarks for 1895 and 1904 respectively, maker's marks, lengths 45mm. **£200–£300**

83

A GOLD BANGLE, CIRCA 1870, the front with applied ivy leaf and flowerhead decoration, the border with bead and ropetwist detailing, bloomed finish throughout, Registry mark for 1869, inner dimensions 6 x 5cm. **£1,200–£1,500**



84

A CHAIN NECKLACE, of woven fancy-link design, stamped '375', length 76cm. **£1,000–£1,200**





85

A MID 19TH CENTURY CAMEO AND PEARL BROOCH, the hardstone cameo carved in high relief to depict a classical female profile, the pierced surround with pearl highlights and granulation decoration, glazed compartment verso, mounted in gold, (pearls untested), length 5.5cm. £400-£600



86

A HARDSTONE CAMEO AND DIAMOND RING AND EARRINGS, each within rose-cut diamond borders, earrings with later screw fittings, (one diamond deficient), stamped '9ct', ring size L½. £400-£600



87

A LATE 19TH CENTURY AGATE MOURNING BROOCH, the oval banded agate cabochon in a gold surround with black enamel decoration, bead and ropetwist detailing, glazed compartment to the reverse, length 5.5cm. £200-£300



88

AN EARLY 20TH CENTURY GOLD GATE-LINK BRACELET, with openwork spiral detailing, stamped '15', length 18.5cm. £500-£700



89

AN AGATE BRACELET, 19th century composite, the gilt metal frontispiece of openwork cartouche design, set with polished agate cabochons and with bead and boule detailing, to a six-row agate bead bracelet, length 19.5cm. £200-£300

90

A DIAMOND NECKLACE AND EAR STUD SUITE, the frontispiece set with brilliant-cut diamonds, with central flowerhead drop design, to a woven back chain, the ear studs en suite, *total diamond weight approximately 3.20 carats, necklace length 40cm, ear stud length 15mm.* £2,000–£2,600

According to a PMI test on an XRF analyzer the necklace is testing as 20 carat gold.



91

A DIAMOND RING, the principal brilliant-cut diamond, weighing 1.09 carats, between similarly-set diamond shoulders, mounted in 18ct gold, London hallmark, *total diamond weight approximately 1.25 carats, ring size L–M.* £900–£1,200

92

A DIAMOND DRESS RING, the graduated row of baguette-cut diamonds within a lozenge-shaped surround of brilliant-cut diamonds, mounted in 18ct gold, London import mark, *total diamond weight approximately 1.25 carats, ring size M.* £400–£600



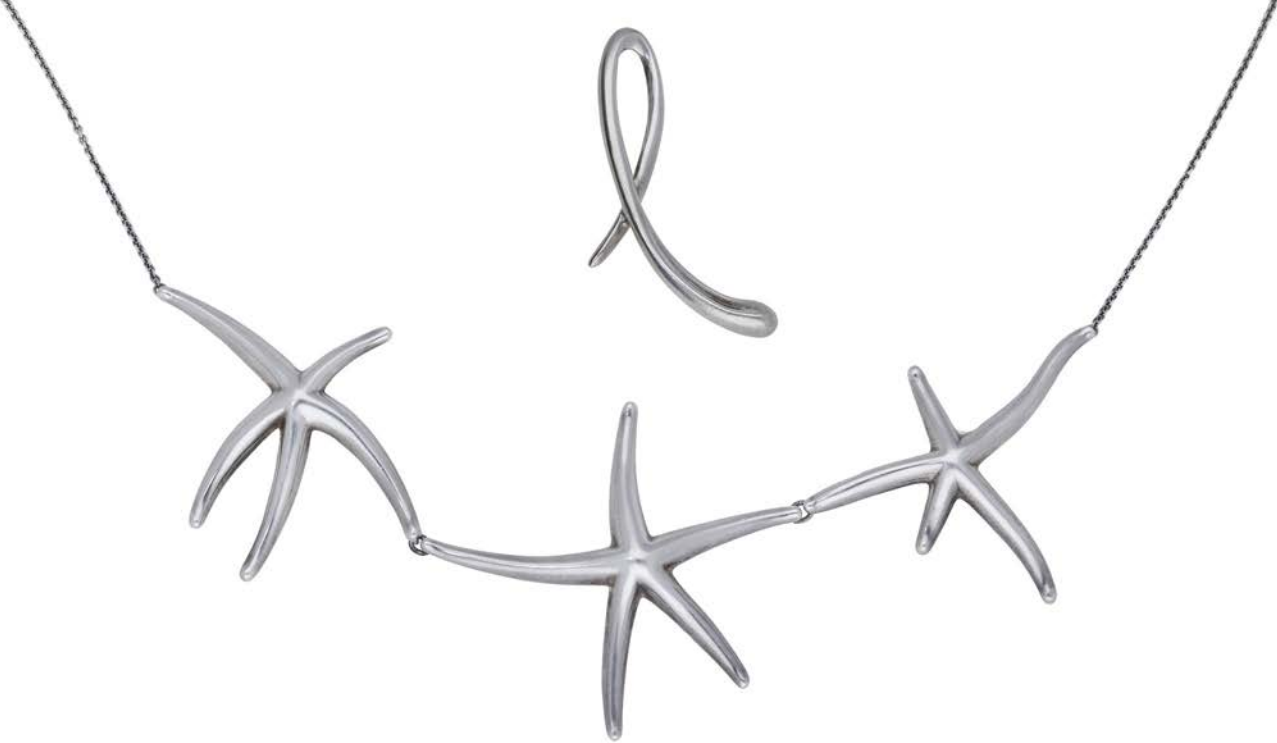
93

A SAPPHIRE AND DIAMOND CLUSTER RING AND A DIAMOND RING, the circular-cut sapphire claw-set within a surround of brilliant-cut diamonds, the five stone ring set with a graduated row of brilliant-cut diamonds, (damaged and with one diamond deficient), stamped '18CT & PLAT' and '18CT' respectively, *total diamond weight approximately 0.95 carat, ring sizes J½.* £200–£300



94

A SAPPHIRE AND DIAMOND BAR BROOCH, CIRCA 1900, the cushion-shaped mixed-cut sapphire between two old brilliant-cut diamonds, to a polished and tapered bar brooch, mounted in gold, *length 7cm.* £300–£400



95

A STARFISH NECKLACE AND ALPHABET LETTER 'L' PENDANT BY ELSA PERETTI FOR TIFFANY & CO., the three polished starfish links suspended by a cable-link chain, together with a silver 'L' initial pendant, both signed 'PERETTI' and 'TIFFANY&CO', stamped '925' and with London import marks for 1987 respectively, necklace length 49cm. £100-£150



96

AN 18CT WHITE GOLD AND DIAMOND RING, set throughout with brilliant-cut diamonds, Birmingham hallmark for 2011, ring size Q. £200-£260



97

A DIAMOND SINGLE STONE RING, of spiral design and set with a brilliant-cut diamond, diamond weight approximately 0.40 carat, stamped '750', ring size L. £400-£600



98

A SAPPHIRE AND DIAMOND RING, of crossover design, set with circular-cut rubies and brilliant-cut diamonds, with reeded detailing to the front, stamped '585', maker's mark 'ESS', total diamond weight approximately 0.40 carat, ring size Q. £500-£700

99

A GEM-SET LONG CHAIN, the curb-link chain spaced by an octagonal mixed-cut citrine, length approximately 83.5cm. £600-£800

According to a PMI test on an XRF Analyzer, the chain is testing as 21ct gold.





100

A SILVER 'BOOMERANG' NECKLACE BY NANNA DITZEL FOR GEORG JENSEN, the polished links terminating in a toggle clasp, signed 'Georg Jensen', London import mark for 1970, stamped '925 S DENMARK', numbered '276', length 46.5cm.

£200-£300

101

TWO DRESS RINGS BY NAOHIKO NOGUCHI AND SOLANGE AZAGURY-PARTRIDGE, the first modelled as the word 'loving' and set with a diamond highlight, signed 'noguchi, 05', the second modelled as the word 'love', UK hallmark for 18ct gold, maker's mark 'SA-P', ring sizes K and N.

£500-£700



102

A DIAMOND RING, the tapered band channel-set to the front with brilliant-cut diamonds, Portuguese assay mark, total diamond weight approximately 0.75 carat, ring size Q.

£300-£500





103

AN 18CT GOLD AND GEM-SET NOVELTY DOG BROOCH, CIRCA 1960, with wirework coat, sapphire cabochon nose, ruby cabochon eyes and single-cut diamond eyebrows, the box-link safety chain with diamond terminal, stamped 750, Italian assay marks, length 35mm. **£500-£700**



104

AN 18CT GOLD AND GEM-SET NOVELTY BROOCH, CIRCA 1960, designed as a winking cat, with a turquoise cabochon body with similarly-cut sapphire eye, ruby nose and single-cut diamond detailing, stamped '750', Italian assay marks, length 5cm. **£600-£800**



105

A SAPPHIRE AND DIAMOND BROOCH, CIRCA 1970, designed as a spiral of textured batons, set with pear-shaped sapphires and old brilliant-cut diamonds, unsigned, total diamond weight approximately 0.50 carat, length 5cm. **£1,200-£1,500**

According to a PMI test on an XRF Analyzer, the brooch is testing as 18ct gold.

106

A CHAIN NECKLACE, of woven fancy-link design, stamped '14Kt', length 46cm.

£800-£1,000



ALAN MARTIN GARD is a London-based jeweller who formed part of the renaissance of Modern British Jewellery Design that occurred in the second half of the 20th century. After long apprenticeships at both Combies of Bond Street, and under Andrew Grima, Gard set out on his own in 1966. He has exhibited at both Goldsmiths' Hall and the London Design Centre and has won various prizes including the De Beers Engagement ring design contest. He is still based at St Cross Street in Hatton Garden.

Literature:

Wingfield, Mary Ann, *Modern British Jewellery Designers 1960–1980:*

A Collector's Guide, pub. ACC Art Books, 2021.



107

AN 18CT GOLD BRACELET WRISTWATCH AND CUFFLINK SUITE BY ALAN MARTIN GARD, 1973, the watch with central square dial, baton hour markers and hands, dial and 21 jewel movement signed 'Rotary', to a bracelet strap of foliate rectangular panels, the cufflinks of en suite, with swivel T-bar fittings, both with London hallmark and maker's marks 'AMG, bracelet length 16cm, cufflink panels 26 x 21mm.

£2,600–£3,000





108

A 'NAVARATNA' GEM-SET PENDANT BY PIPPA SMALL, the rectangular panel inset with three rows of rough-cut diamonds and a single ruby, suspended from a cable-link chain with flowerhead drop, stamped '750', pendant length 26mm, chain length 65cm. £600–£800

'Navaratna', meaning Nine Gems, is an ancient amulet found throughout Asia. It is believed that the nine auspicious gems have a special connection to each of the nine planets.

109

A PAIR OF DIAMOND EARRINGS, the bombé basket weave hoops set with two rows of brilliant-cut diamonds, spuriously signed 'T&Co', stamped '750', total diamond weight approximately 0.50 carat, length 24mm £800–£1,200



110

A BLUE ZIRCON DRESS RING, CIRCA 1970, the rectangular concave panel set with circular-cut blue zircons, stamped '750', Italian assay mark for Balestra Giovanni & Figli, ring size L–M. £500–£700



111

A SAPPHIRE AND DIAMOND RING, the oval mixed-cut sapphire claw-set between brilliant-cut diamond trios and similarly-set crossover shoulders, Portuguese assay marks, total diamond weight approximately 0.60 carat, ring size P. £400–£600



112

A DIAMOND DRESS RING, the bombé ring of bicolour basket weave design, with a pavé-set diamond scroll to the centre, indistinct assay marks, stamped '18K', total diamond weight approximately 0.40 carat, ring size approximately K (with sizing clip). £300–£400

113

A FANCY-LINK BRACELET, the two polished anchor-links with reeded and variously woven links between, stamped '800', Portuguese assay mark, length 21.5cm. £1,200–£1,500





114

TWO COLLAR NECKLACES, the first by Rancangelo, of reversible bicolour design, the second of plain polished design, first signed, stamped '14Kt', second stamped '585' and with Dutch assay mark, *first length 45cm.* (2).
£1,000–£1,200

115

A DIAMOND DRESS RING, of domed and textured basket weave design, with single-cut diamond highlights, shank stamped '750', ring size O.
£200–£300



116

A DIAMOND BANGLE, of crossover design, each side terminating in a pear-shaped drop pavé-set with brilliant-cut diamonds, indistinct signature, Italian assay mark, stamped '750', *total diamond weight approximately 0.60 carat, inner diameter 6.5cm.*
£600–£800





117

A RUBY AND DIAMOND PENDANT AND A PAIR OF GEM-SET EARRINGS, the pierced cartouche pendant set with an oval mixed-cut ruby within a surround of brilliant-cut diamonds, the whole suspending a ruby bead and diamond drop, stamped '14K', the earrings each set with brilliant-cut diamonds and calibré-cut orange gemstones, *total diamond weight approximately 1.75 carats, pendant length 45mm.* £600–£800



118

TWO GEM-SET RINGS, comprising an 18ct gold dress ring set with an oval-cut amethyst within a brilliant-cut diamond surround with step-cut peridot shoulders, and a brilliant-cut diamond band ring, mounted in 9ct gold, *total diamond weight approximately 0.30 carat, first ring size L.* £400–£500



119

A LAPIS LAZULI NECKLACE AND A PAIR OF EARRINGS, the uniform row of lapis lazuli beads spaced by polished roundels, to a bolt-ring clasp, the earrings set with a lapis lazuli bead suspended by a stylised hoop designed as two fish, necklace stamped '750', Italian assay mark, earrings stamped '14', *necklace length 56.5cm.* £200–£300

120

A GEM-SET BRACELET, the polished links spaced by a combination of step-cut citrine, green tourmaline, aquamarine and amethyst, *length 18.5cm.* £500–£700



121

A VARI GEM-SET BRACELET, the articulated bracelet channel-set with combination of calibré-cut sapphires, rubies and emeralds spaced by brilliant-cut diamond collets, stamped '750', *total diamond weight approximately 0.20 carat, length 19cm.* £300–£500





122

AN AMETHYST AND DIAMOND NECKLACE, the 9ct gold brick-link chain leading to a graduated row of oval-cut amethysts, with single-cut diamond highlights, UK hallmark, length 41.5cm.

£600–£800



123

A CHRYSOPRASE AND DIAMOND BROOCH/PENDANT BY VOURAKIS, the lozenge-shaped drop set throughout with stained green chrysoprase beads, with brilliant-cut diamonds to the centre and a beadwork lattice between, signed, stamped '18K', length including bale 6.2cm.

£700–£1,000

124

A GEM-SET RING, 1987, of tapered bombé style, set to the front with a sapphire, ruby and emerald cabochon, mounted in 18ct gold, London hallmark, maker's mark 'BPR', ring size M.

£300–£500





125

A TANZANITE PENDANT, the cushion-shaped tanzanite in a double four claw setting, tanzanite dimensions 21 x 18 x 10mm.

£2,000–£3,000



126

A ROSE-QUARTZ PENDANT BY H. STERN, the cushion-shaped rose-quartz claw-set beneath a trio of brilliant-cut diamonds, stamped '750', maker's mark, French assay mark, total diamond weight approximately 0.10 carat, length 35mm.

£200–£300



127

A STAR SAPPHIRE AND DIAMOND CLUSTER RING, the sugarloaf star sapphire set within a surround of single-cut diamonds, mounted in 18ct gold, later London hallmarks, total diamond weight approximately 0.50 carat, ring size K½.

£800–£1,000



128

A PINK TOURMALINE DRESS RING BY VERDURA, the oval-cut pink tourmaline to a tapered woven wirework mount, signed 'VERDURA' and stamped 'PLAT', ring size L.

£800–£1,200



129

A TANZANITE AND DIAMOND DRESS RING, the cushion-shaped tanzanite between graduated baguette-cut diamond shoulders, stamped '18K', total diamond weight approximately 1.60 carats, ring size N–N½.

£3,000–£4,000

130

AN AQUAMARINE, SAPPHIRE AND DIAMOND PENDANT BY FEI LIU, the step-cut aquamarine within a border of brilliant-cut diamonds, with trefoils of circular-cut sapphires to the cardinal points, aquamarine weight 28.27 carats, pendant length 35mm. £1,800–£2,200



131

AN AQUAMARINE AND DIAMOND DRESS RING, the oval-cut aquamarine set between bifurcated diamond-set shoulders, mounted in 9ct gold, UK hallmark, ring size N. £200–£300



132

AN AQUAMARINE AND DIAMOND RING, the step-cut aquamarine claw-set between brilliant-cut diamond trefoil shoulders, ring size M. £300–£500



133

AN AQUAMARINE AND DIAMOND CLUSTER RING, 1978, the circular-cut aquamarine claw-set within a surround of brilliant-cut diamonds, mounted in 18ct gold, London hallmark, total diamond weight approximately 0.50 carat, ring size N. £300–£500



134

A CULTURED PEARL NECKLACE WITH DIAMOND CLASP, 1982, the graduated row of cultured pearls to an 18ct gold spherical clasp, set throughout with brilliant-cut diamonds and with beaded gold detailing, London hallmark, total diamond weight approximately 0.75 carat, length 92.5cm. £300–£400





135

A CITRINE AND DIAMOND SET HEART PENDANT, the heart-shaped citrine below a brilliant-cut diamond surmount and similarly-set detachable bale, mounted in 18ct white gold, stamped '750' and with Italian assay marks, the whole suspended on an unassociated brick-link chain stamped '14K', chain length approximately 45cm, pendant length 5.5cm (including bale).

£600–£800



136

AN AQUAMARINE BROOCH, of tapered, undulating form and centred with a fancy-cut aquamarine in a raised claw setting with satin finish, length 6cm.

£300–£500

According to a PMI test on an XRF Analyzer, the brooch is testing as 17ct gold.



137

AN AMETHYST DRESS RING, the rectangular step-cut amethyst claw-set between tapering stylised foliate shoulders, ring size K.

£400–£600



138

A QUARTZ AND ENAMEL DRESS RING BY ALBERTO FELICIO, the step-cut green quartz between brilliant-cut diamond shoulders, to a tapered band with green enamel decoration, stamped '750M11', ring size O–Q.

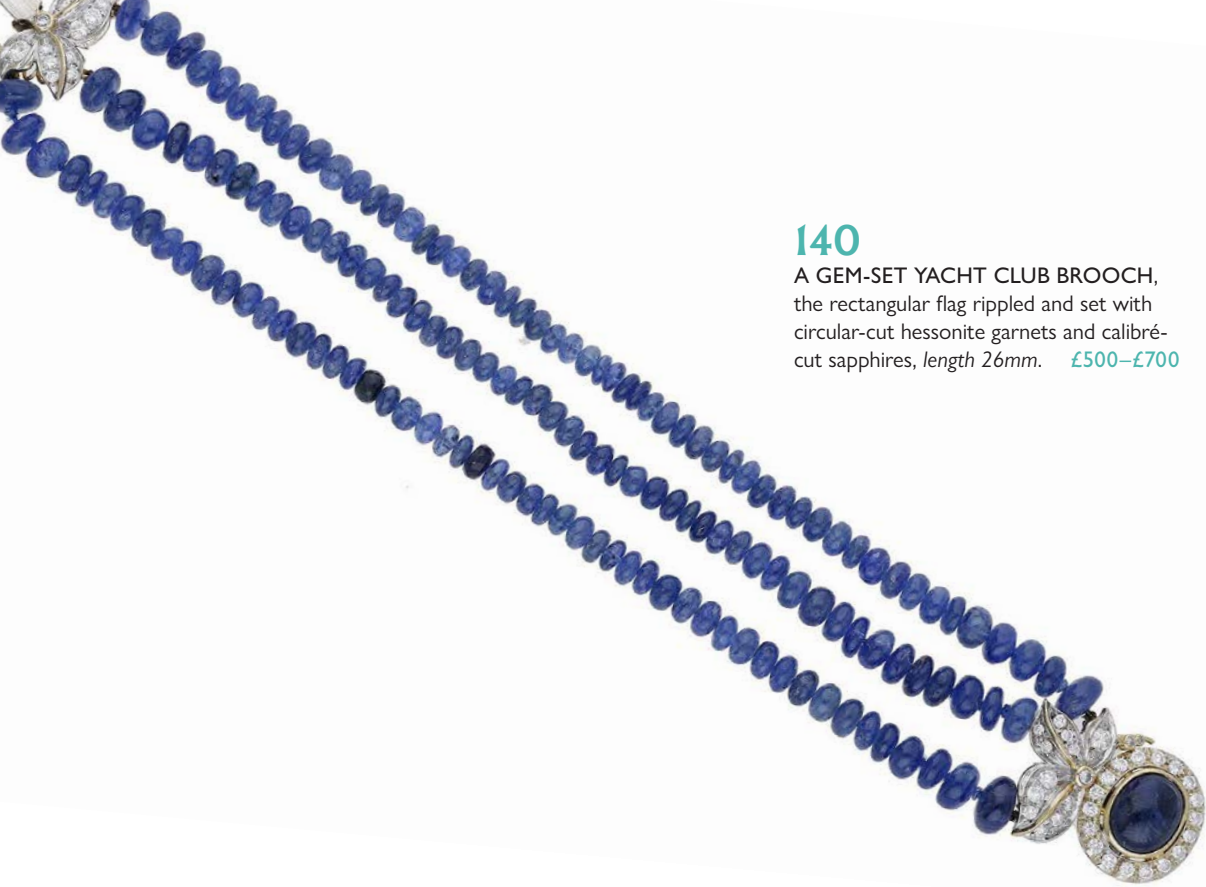
£600–£800



139

AN EMERALD DRESS RING, of textured bombé form, collet-set throughout with step-cut emeralds, stamped '18K', ring size N.

£300–£400



140

A GEM-SET YACHT CLUB BROOCH, the rectangular flag rippled and set with circular-cut hessonite garnets and calibr -cut sapphires, length 26mm. **£500–£700**



141

A SAPPHIRE AND DIAMOND BRACELET, the three rows of polished sapphire beads leading to a cluster clasp with foliate detailing and set with brilliant-cut diamonds and sapphire cabochon, stamped '750', Italian assay marks, indistinct signature, total diamond weight approximately 1.80 carats, length 20cm. **£1,000–£1,500**

142

A DIAMOND RING BY LE CHIC, set with a brilliant-cut diamond between baguette-cut diamond shoulders, signed, stamped '585', Dutch assay mark, total diamond weight approximately 0.40 carat, ring size N. **£500–£600**



143

A DIAMOND FIVE STONE RING, set with a graduated row of transitional-cut diamonds, stamped '18CT PLAT', ring size Q. **£100–£150**



144

AN 18CT GOLD SAPPHIRE AND DIAMOND CLUSTER RING, the large oval mixed-cut sapphire claw-set within a surround of brilliant-cut diamonds, Birmingham hallmark, total diamond weight approximately 0.60 carat, ring size K½ **£300–£500**

145

AN EMERALD AND DIAMOND DRESS RING, the stylised cluster set with brilliant and marquise-cut diamonds and marquise-cut emeralds, mounted in 18ct gold, UK import mark (misstruck), total diamond weight approximately 1.20 carats, ring size J. **£600–£800**





146

A MID 19TH CENTURY GOLD ENAMEL AND GEM-SET NECKLACE, the fancy-link chain leading to a bow frontispiece centred with a cushion-cut ruby within a seed pearl surround, with white and turquoise enamel decoration and suspending three similarly-decorated drops below, mounted in gold, fitted case, length 41cm.

£600-£800

147

A MID 19TH CENTURY GOLD AND TURQUOISE SET BRACELET, the bracelet composed of continuous concave links within a ropetwist border; the turquoise cabochon cluster centred with an old brilliant-cut diamond highlight, glazed panel verso, mounted in gold, length approximately 18cm.

£1,200-£1,500





149

A MID 19TH CENTURY GOLD BROOCH, the stylised knot suspending an elongated drop, with chain swags and foliate engraving throughout, length 7.5cm. £300–£500



148

A MID 19TH CENTURY GARNET BROOCH, the openwork quatrefoil set with oval-cut garnets and scrolling leaf tendrils, with engraved foliate decoration throughout, suspending a detachable drop en suite, mounted in gold, length 8.5cm. £300–£400

150

A MID 19TH CENTURY DIAMOND BUCKLE BROOCH, set with old brilliant-cut diamonds and blue enamel highlights, with engraved foliate decoration and ropetwist border, glazed compartment verso, mounted in gold, total diamond weight approximately 0.50 carat, diameter 40mm. £800–£1,000



151

AN EARLY 20TH CENTURY BLACK VELVET AND DIAMOND BRACELET, the plain black velvet supporting a central buckle set with old brilliant and single-cut diamonds, with similarly-cut diamond highlights to either side, to a plain polished clasp, the safety chain with spectacle-set diamond accents, mounted in platinum and gold, length 14cm. £400–£500



152 Y

A PAIR OF CORAL AND DIAMOND EAR CLIPS, each cabochon above a brilliant-cut diamond set bow, with textured finish, stamped '14k 585', length 20mm.

£200-£300



153 Y

A MID 20TH CENTURY CARVED CORAL ROSE BROOCH, the *Corallium Rubrum* bloom above diamond sepals and a long stem supporting polished leaves, a diamond-set rose bud and diamond thorns, stamped 'Sikan, Roma, 750', length 13.7cm.

£400-£600

154

A DIAMOND FLOWER BROOCH, FRENCH, CIRCA 1970, with textured petals and leaf, the stamen set with brilliant-cut diamonds, French assay mark, maker's mark possibly 'JAL', length 6cm.

£400-£600



155

A BIRD AND LEAF BROOCH, CIRCA 1850, modelled as a bird perched upon three leaves, with textured detail throughout, mounted in gold, length 40mm.

£280-£320



156

A RUBY AND DIAMOND HUMMINGBIRD BROOCH, set throughout with brilliant-cut diamonds, with a calibr -cut ruby chest, ruby cabochon eye and sapphire cabochon beak, total diamond weight approximately 0.75 carat, length 25mm.

£1,500–£2,000



157

A GEM-SET EAGLE BROOCH, realistically modelled with textured feathers, with graduated single-cut diamond accents to collar and wing and a ruby cabochon eye, length 35mm.

£300–£500



158

A MID 20TH CENTURY GEM-SET BIRD BROOCH, realistically modelled as a bird perched on a branch, the back pav -set with circular-cut citrines and with a similarly-cut emerald eye, length 40mm.

£440–£500

According to a PMI test on an XRF Analyzer, the brooch is testing as 18ct gold.

159

A NOVELTY BIRD BROOCH, designed as a bird-of-paradise in flight, with textured finish and single-cut diamond eye, stamped '18ct', length 9cm.

£300–£400





160

A BLUE TOPAZ AND DIAMOND 'CIELO' PENDANT BY PASQUALE BRUNI, the oval fancy-cut blue topaz to a stylised mount with brilliant-cut diamond set celestial decoration, suspended by a three-row cable-link chain terminating in polished moon and star motifs and with gem-set clasp, signed, Italian assay mark, stamped '750', pendant length 4cm, ring size M.

£800–£1,200



161

AN AQUAMARINE AND DIAMOND RING, the cut-cornered aquamarine in a rubover setting within a surround of brilliant-cut diamonds, to a broad band, maker's mark for Olga, stamped '18ct', maker's pouch, ring size M–N.

£2,000–£3,000



162

AN AQUAMARINE DRESS RING, the step-cut aquamarine bezel-set to a tapered 18ct gold band, London hallmark, ring size I–J. .

£600–£800



163

A BLUE TOPAZ AND DIAMOND 'AMORE' DRESS RING BY PASQUALE BRUNI, the oval fancy-cut blue topaz in an openwork mount reading 'Amore' and set throughout with brilliant-cut diamonds, signed, Italian assay mark, stamped '750', ring size M.

£600–£800

164

A CITRINE PENDANT, the cushion-shaped fancy-cut citrine with foliate motifs and ropetwist decoration, length excluding bale 35mm. **£50-£80**



165

A GEM-SET DRESS RING, the step-cut citrine within a surround of circular-cut sapphires and brilliant-cut diamonds, between similarly-set diamond shoulders, mounted in 18ct gold, signed, UK hallmark, ring size M-N. **£800-£1,000**

166

A DIAMOND CLUSTER RING, set throughout with brilliant-cut diamonds, stamped '18CT', total diamond weight approximately 4.50 carats, ring size M-N. **£1,200-£1,500**



167

TWO MID 20TH CENTURY GEM-SET DRESS RINGS, the first set with a step-cut aquamarine between triangular-cut diamond shoulders, the openwork ropetwist mount with circular-cut ruby highlights, the second set with a circular-cut citrine within a stylised woven surround of brilliant-cut diamonds, ring sizes I-J. **£500-£700**



168

A ROCK CRYSTAL NECKLACE BY LALAOUNIS, the textured fancy-shaped links leading to a pendant of radiating design, formed of polished beads, globules and spokes and set to the centre with an oval fancy-cut rock crystal, signed 'Lalaounis', maker's mark, French import mark, stamped '750', pendant length 9cm. £5,000–£7,000



169

A PAIR OF EARRINGS BY LALAOUNIS, the flowerhead surmounts with bead and wirework detailing, each suspending an acorn drop, maker's mark, numbered, stamped 'GREECE' and '750', length 30mm. £300–£500

170

A ROCK CRYSTAL AND GOLD ARCHER'S RING BY LALAOUNIS, the polished rock crystal overlaid with an 18ct gold wirework lattice, with bead and flowerhead detailing, maker's mark, numbered, import mark for London 1990, ring size approximately N. £600–£800



171

A PAIR OF DIAMOND EAR CLIPS BY VOURAKIS, of stylised trefoil design, with textured finish and set with brilliant-cut diamonds, signed 'VOURAKIS', numbered, stamped '750', total diamond weight approximately 1.65 carats, length 27mm. £1,000–£1,500



172

A PAIR OF EARRINGS, the central flowerhead motifs within an openwork bead and wirework surround, diameter 25mm. £400–£600

According to a PMI test on an XRF Analyzer, the earrings are testing as 21ct gold.



173

AN INDIAN WHITE STONE AND ENAMEL PENDANT NECKLACE, designed as a crescent around a flowerhead, suspending a fringe of pear-shaped drops, with a central fish-shaped motif, set throughout with vari-cut white gemstones and decorated with polychrome enamel, each drop further suspending a tassel of seed pearls and green beads, suspended from a fox-tail link chain, *pendant width 5cm.* £400–£500

According to a PMI test on an XRF analyzer the chain is testing as 22ct gold and the pendant is 9ct gold.



174

AN INDIAN GEM-SET AND CULTURED FRESHWATER PEARL NECKLACE, the cultured freshwater pearls leading to a scalloped roundel set to the front with vari-cut rubies, diamonds and a central emerald cabochon, with polychrome enamel decoration to the reverse, *length 43cm.* £800–£1,000



175

A PAIR OF INDIAN DIAMOND CLUSTER EAR STUDS, the stepped flowerheads set with lasque-cut diamonds, with polychrome enamel decoration to the reverse, *diameter 24mm.* £600–£800



176

A CULTURED PEARL AND DIAMOND RING AND EARRING SUITE, the cultured pearl cluster with a scroll of brilliant-cut diamonds to either side, the earrings en suite, ring stamped '18K', *ring size J, earring length 18mm.* £500–£800



177

A 19TH CENTURY INDIAN GEM-SET FESTOON NECKLACE, the three row chain set with emerald and ruby beads and pearls, leading to a stylised floral drop set with foil-backed faceted white gemstones and ruby and turquoise cabochons, (pearls untested), length 55cm.

£600-£800

Provenance: Retailled by Simon Ray, St James's, London.

178

A FRESHWATER CULTURED PEARL AND DIAMOND BRACELET, the multi-strand torsade terminating in a pieced brilliant-cut diamond set clasp, total diamond weight approximately 2.50 carats, length approximately 17.5cm.

£800-£1,000





179

A 19TH CENTURY SAPPHIRE AND DIAMOND BROOCH, the trefoil sprig set with an oval mixed-cut sapphire and rose-cut diamonds, mounted in gold, length 45mm. £600–£800



180

AN EARLY 19TH CENTURY DIAMOND RING, the tapered band set to the front with two rows of old brilliant-cut diamonds, to similarly-set shoulders with engraved scrollwork decoration, mounted in silver and gold, total diamond weight approximately 2.00 carats, ring size M. £1,000–£1,500



181

A DIAMOND SINGLE STONE RING, the brilliant-cut diamond mounted in platinum, London hallmark, diamond weight approximately 1.00 carat, ring size O. £1,200–£1,500



182

A DIAMOND THREE STONE RING, set with a row of brilliant-cut diamonds, between tapered shoulders, indistinct stamp, total diamond weight approximately 2.40 carats, ring size P. £3,000–£3600



183

AN AQUAMARINE AND DIAMOND CLUSTER RING, the oval-cut aquamarine set within a surround of old brilliant-cut diamonds, total diamond weight approximately 1.60 carats, ring size N–O. £800–£1,200

184

A DIAMOND PENDANT, the whiplash scroll surround set with brilliant-cut diamonds and suspending a cushion-shaped diamond drop, weighing 2.02 carats, the whole leading to a trio of brilliant-cut diamonds above a cultured pearl drop, to a flattened curb-link chain, pendant length 44mm. £4,000–£6,000



185

A LATE 19TH CENTURY BUTTERFLY BROOCH, the pierced wings set with rose-cut diamonds, the thorax and abdomen with half-pearls and the eyes with red gemstone cabochons, mounted in silver and gold, (pearls untested), diameter 40mm. £500–£700



186

A PAIR OF AQUAMARINE AND SEED PEARL EAR PENDANTS, of crescent design with aquamarine pendant drop below, on post fittings, length 30mm. £200–£300



187

A DIAMOND CRESCENT BROOCH, set throughout with brilliant-cut diamonds, mounted in 18ct gold, London hallmark for 1975, total diamond weight approximately 0.75 carat, width 26.5mm. £300–£500

188

A LATE 19TH CENTURY GEM-SET BROOCH, set with two rows of vari-cut diamonds, a sapphire, ruby, emerald and pink sapphire, and various pearls, mounted in gold, (pearls untested), total diamond weight approximately 1.20 carats, length 5.5cm. £400–£600





189

AN 18CT WHITE GOLD AND DIAMOND PENDANT, the tapered pendant of bombé form and set to the front with brilliant-cut diamonds, suspended by a fancy-link chain, the pendant stamped '750', with Italian assay marks (rubbed), the chain stamped '750', total diamond weight approximately 0.40 carat, pendant length approximately 15mm.

£500–£700



190

A PAIR OF DIAMOND EAR CLIPS, the whiplash sprays set throughout with brilliant and baguette-cut diamonds, stamped 'PT', total diamond weight approximately 0.60 carat, length 23mm.

£240–£300



191

A PAIR OF CULTURED PEARL AND DIAMOND EAR PENDANTS BY FEI LIU, the cultured pearl drops each suspended within a surround of brilliant-cut diamonds and beneath a similarly-set fleur-de-lys surmount, stamped 'Pt950', total diamond weight 0.61 carat, length 28.5mm.

£800–£1,000



192

A PAIR OF CULTURED PEARL AND DIAMOND EAR CLIPS, the cultured pearls, measuring approximately 13.5mm, set within an asymmetric surround of brilliant-cut diamonds, total diamond weight approximately 1.50 carats, length 22mm.

£800–£1,200



193

A CULTURED PEARL AND DIAMOND RING BY MIKIMOTO, the cultured pearl, measuring approximately 10mm, to a pierced stylised mount millegrain-set with single-cut diamonds, maker's mark, stamped 'Pt', ring size N½.

£500–£700



194

A GOLDEN TOPAZ AND DIAMOND CLUSTER RING, converted from a 19th century jewel, the mixed-cut topaz claw set within a surround of old brilliant-cut diamonds, stamped '18ct', topaz weight approximately 4.50 carats, total diamond weight approximately 1.80 carats, ring size P. **£1,800–£2,400**



195

A DIAMOND SINGLE STONE RING, the cushion-cut diamond, weighing 1.65 carats, in an eight claw setting, stamped '18ct', ring size H. **£1,800–£2,400**



196

A SRI LANKAN YELLOW SAPPHIRE AND DIAMOND RING, the cushion-shaped sapphire claw-set between transitional-cut diamond trefoils in millegrain collet settings, total diamond weight approximately 0.75 carat, sapphire dimensions 13.6 x 10.7 x 5.5mm, ring size M–N. **£4,000–£5,000**

Accompanied by a report from The Gem & Pearl Laboratory stating the sapphire is of Sri Lankan origin, a natural yellow colour and with no evidence of heat treatment. Report number 23648, dated 25 August 2023.



197

A PAIR OF CULTURED PEARL AND DIAMOND EARRINGS, the hoops pavé-set with brilliant-cut diamonds and leading to a similarly-set diamond cap above a cultured pearl drop, mounted in 18ct gold, UK hallmark, total diamond weight approximately 2.00 carats, length 33mm. **£1,800–£2,200**



198

A DIAMOND RING, the bombé ring designed as an openwork twist and scattered with brilliant-cut diamonds, stamped '18K', total diamond weight approximately 2.60 carats, ring size L. **£1,000–£1,500**



199

A DIAMOND CLUSTER RING, the tiered lozenge-shaped cluster set with brilliant-cut diamonds, mounted in 18ct gold, UK hallmark, total diamond weight approximately 1.00 carat, ring size M–N. **£300–£500**



200

A MID 20TH CENTURY DIAMOND DRESS RING, the lozenge-shaped brilliant-cut diamond cluster to a bombé tapered band with reeded finish, stamped '14KP', total diamond weight approximately 0.80 carat, ring size O. **£300–£500**



201

AN 18CT GOLD EMERALD AND DIAMOND CLUSTER RING, the octagonal mixed-cut emerald claw-set within a surround of brilliant-cut diamonds, London hallmark for 1984, total diamond weight approximately 0.50 carat, ring size N½. **£400–£600**



202

A CULTURED PEARL AND DIAMOND RING AND EAR CLIP SUITE, each set with a cultured pearl within a surround of brilliant and baguette-cut diamonds, stamped '585', maker's mark 'S', total diamond weight approximately 3.00 carats, ring size N, ear clip length 18mm. **£1,200–£1,800**



203

A PAIR OF CULTURED PEARL AND DIAMOND EAR CLIPS, the black and white cultured pearls spaced by stylised ribbon motifs with single-cut diamond highlights, stamped '585 14K', length 30mm. **£200–£300**

204

A GEM-SET AND FRESHWATER CULTURED PEARL NECKLACE AND EARRING SUITE, collet-set with vari-coloured gemstones and freshwater cultured pearls, with a diamond-set hoop and baton motif to the front and similarly-set chain drop below, earrings en suite, stamped '18k', necklace length 73cm. **£800–£1,000**



205

AN 18CT WHITE GOLD EMERALD AND DIAMOND CLUSTER RING, the step-cut emerald claw-set within a surround of brilliant-cut diamonds, Sheffield hallmark, total diamond weight approximately 0.50 carat, ring size J½. **£300–£500**





206

AN EMERALD AND DIAMOND THREE STONE RING, the step-cut emerald between two old brilliant-cut diamonds, stamped '18', total diamond weight approximately 1.60 carats, ring size Q. **£1,500–£2,000**

According to a verbal report from GCS the emerald is of Colombian origin with indications of moderate clarity enhancement. Verbal report number 5784-2450.



207

A RUBY AND DIAMOND RING, the oval mixed-cut ruby set between stepped shoulders of baguette-cut diamonds, stamped '750', ring size P. **£600–£800**



208

AN EMERALD AND DIAMOND RING, the tapered band channel-set with a series of brilliant-cut diamonds and centred with an emerald cabochon, stamped '750', total diamond weight approximately 0.65 carat, ring size Q½. **£600–£800**



209

A RUBY AND DIAMOND RING, the oval ruby cabochon set between stepped brilliant-cut diamond shoulders, stamped '18K', ring size K. **£300–£500**



210

AN EMERALD AND DIAMOND RING, the step-cut emerald in a surround of brilliant-cut diamonds, between bifurcated shoulders set with similarly-cut diamonds, total diamond weight approximately 0.45 carat, ring size N. **£300–£500**



211

A PAIR OF RUBY SWIRL EAR PENDANTS BY ZOUGHAI B, the openwork swirl surmounts suspending a chain set with a briolette-cut ruby bead spacer and terminating in a further swirl drop, signed, maker's case, length 6.2cm. £500–£600

212

A PAIR OF GEM-SET CLUSTER EARRINGS, the oval emerald cabochons within a surround of cultured pearls and brilliant-cut diamonds, total diamond weight approximately 0.45 carat, length 20mm. £500–£700



213

A PAIR OF RUBY AND DIAMOND EAR STUDS, the oval ruby cabochons within a surround of brilliant-cut diamonds, total diamond weight approximately 0.30 carat, length 12mm. £500–£700



214

A MID 20TH CENTURY GEM-SET BRACELET, the articulated strap formed as a series of overlapping and pierced panels set with circular-cut rubies and emeralds, stamped '18C', length 19cm. £3,000–£4,000



215

A MID 20TH CENTURY GEM-SET GIARDINETTO BROOCH, the openwork basket set with old brilliant and single-cut diamonds, issuing a bouquet set with various gemstone buds, to include garnets, demantoid garnets, sapphires and diamonds, *total diamond weight approximately 1.00 carat, diameter 31mm.* £400–£600



216

A COLOURED DIAMOND AND DIAMOND RING, of crossover design, each side terminating in a brilliant-cut diamond of yellow or brown tint, between shoulders pavé-set with brilliant-cut diamonds, Portuguese assay marks, *total diamond weight approximately 4.30 carats, ring size M½.* £3,000–£5,000

According to a verbal report from GCS the two principal diamonds are natural Fancy Light Yellow colour, SI1 clarity, and natural Fancy Yellowish Brown colour, VS1-VS2 clarity. Verbal report number 5784-2296.



217

A DIAMOND DRESS RING, set with a graduated row of brilliant-cut diamonds, the openwork mount of scroll design and with ropetwist detailing, *total diamond weight approximately 0.60 carat, ring size L.* £300–£400

218

AN EMERALD AND DIAMOND RING, of foliate design, set with circular-cut emeralds and brilliant-cut diamonds, Portuguese assay mark, *ring size O½.* £200–£300



219

A DIAMOND SET BRACELET, the articulated links channel-set with brilliant-cut diamonds, stamped '14K', *total diamond weight approximately 3.6 carats, length 19cm.* £600–£800



220

A DIAMOND HEART PENDANT / CHARM BY CARTIER, the bombé heart pavé-set with brilliant-cut diamonds, mounted in 18ct gold, to an unassociated faceted cable-link chain, pendant signed 'Cartier', numbered 'OQ6874', French assay mark, maker's mark, European convention mark, chain with Portuguese assay mark, total diamond weight approximately 1.00 carat, pendant length 25mm, chain length 42cm. £1,500–£2,000



221

TWO PAIRS OF EARRINGS, the first pair designed as articulated drops channel-set with brilliant-cut diamonds, mounted in 18ct gold, the second pair set with an oval-cut tanzanite, mounted in 9ct gold, UK hallmarks, first length 23mm. (2) £100–£150



222

A DIAMOND THREE STONE RING, set with three graduated old brilliant-cut diamonds, total diamond weight approximately 0.85 carat, ring size I–J. £300–£500



223

A DIAMOND DRESS RING, of bombé design, set with a graduated row of brilliant-cut diamonds, the latticework mount set with similarly-cut diamonds and with ropetwist detailing, total diamond weight approximately 1.30 carats, ring size M. £600–£800



224

A DIAMOND BANGLE, channel-set to the front with brilliant and baguette-cut diamonds, total diamond weight approximately 2.00 carats, inner dimensions 5.5 x 5cm. £600–£800



225

AN EARLY 20TH CENTURY GEM-SET LAPEL WATCH, FRENCH, of pear-shaped form, the dial with Arabic numerals, the front applied with onyx panel and decorated with old brilliant and single-cut diamonds and calibr -cut emeralds, beneath a series of diamond-set suspensory hoops, the whole suspended from a diamond mounted ribbon fob, inner case stamped '18k', maker's mark 'JF' possibly for Jules Fournier, French assay mark, length 8.8cm. £2,000–£2,400



226

A PAIR OF SAPPHIRE AND DIAMOND EARRINGS, the pear-shaped drops with pierced detailing and set throughout with brilliant-cut diamonds, the border channel-set with French-cut sapphires, total diamond weight approximately 0.60 carat, length 31mm. £900–£1,000



227

AN ART DECO DIAMOND BRACELET, set with a marquise-shaped diamond with graduated baguette-cut diamonds to either side, with calibr -cut emerald highlights, the surround set throughout with old brilliant and brilliant-cut diamonds extending to a similarly-set articulated strap with open hoop motifs, mounted in platinum, total diamond weight approximately 6.00 carats, length 16.5cm. £4,000–£6,000

228

A DIAMOND RING, the step-cut diamond claw-set between graduated single-cut diamond shoulders, stamped 'PLAT', *principal diamond weight approximately 2.25 carats, ring size K½.* **£6,000—£8,000**

Accompanied by a report from the Independent Diamond Report Centre stating the emerald-cut diamond is K colour, VS2 clarity, dated 22 January 2020.





229

A DIAMOND NECKLACE, designed as two bar-shaped drops set with brilliant-cut diamonds and suspended from a 9ct gold chain, UK hallmark, total diamond weight approximately 0.50 carat, chain length 46cm.

£150-£200



230

A DIAMOND NECKLACE AND BANGLE, the 9ct gold fancy-link chain suspending an openwork drop set with a brilliant-cut diamond, the bangle with coiled front and set with single-cut diamonds, chain with UK hallmark, bangle stamped '9KA', chain length 50cm, bangle inner diameter 6.3cm. (2)

£200-£300



231

A DIAMOND RING, set to the front with a graduated row of brilliant-cut diamonds mounted in 18ct gold, Birmingham hallmark, total diamond weight approximately 0.75 carat, ring size K½.

£400-£600



232

A 14CT GOLD AND RUBY FIVE STONE RING, the graduated circular-cut rubies spaced by diamond points, to a scrollwork mount, London hallmark, ring size L.

£340-£400



233

A DIAMOND ETERNITY RING, set throughout with old brilliant-cut diamonds, engraved decoration to the band, total diamond weight approximately 1.20 carats, ring size M-N.

£400-£600

234

A PAIR OF DIAMOND ETERNITY RINGS BY PAUL SIMONS, each angled to create illusion of a single ring, set throughout with brilliant-cut diamonds, both signed, total diamond weight approximately 0.50 carat, ring size N.

£200-£300



235

AN AQUAMARINE AND DIAMOND BRACELET, the graduated row of step-cut aquamarines with brilliant-cut diamond-set spacers between, stamped 'PT950', length 18cm.

£2,000-£2,400





236

A TOURMALINE AND DIAMOND DRESS RING, the cushion-shaped pink tourmaline set beneath a foliate motif with brilliant-cut diamond highlights, the gallery and band similarly-set, indistinct maker's mark, stamped '900PT', ring size M. £400–£600

Provenance: Retailled at Barney's, Los Angeles.



237

A PINK SAPPHIRE AND DIAMOND DRESS RING, of flowerhead design, set with brilliant-cut diamonds and calibré-cut pink sapphires, mounted in 18ct gold, Birmingham hallmark, total diamond weight approximately 0.45 carat, ring size N. £200–£300



238

A ZIRCON AND DIAMOND CLUSTER RING, the circular-cut blue zircon within a surround of single-cut diamonds, ring size J. £300–£400



239

A SAPPHIRE AND DIAMOND RING, the pierced cartouche set with a quatrefoil of brilliant-cut diamonds within a surround of calibré-cut sapphires, total diamond weight approximately 0.40 carat, ring size Q. £500–£700

240

A RUBY AND DIAMOND BRACELET, set with circular-cut rubies in alternating cluster and trefoil surrounds set with brilliant-cut diamonds, with similarly-set spokes to either side, stamped 'PT950', total diamond weight approximately 1.30 carats, length 18cm. £2,000–£2,400





241

AN INDIAN GEM-SET AND CULTURED PEARL NECKLACE, the six strand cultured pearl necklace leading to a centrepiece designed as a flowerhead cluster between stylised bird motifs, set with mirror-cut diamonds and cabochon gemstones, with a fringe of seed pearls, green beads and diamond-set pear-shaped drops, the reverse decorated with polychrome enamel, *centrepiece length 7.3cm.* £1,200–£1,500



242

A TURQUOISE THREE STONE RING, the tapered band set with three turquoise cabochons, stamped '18K', ring size L–M. £200–£300

243

A CULTURED PEARL BRACELET, the rotating cultured pearls within interlocking wirework links, stamped '14K', length 18cm. £100–£200



244

TWO DRESS RINGS, the first set with a cultured freshwater pearl (drilled) between marquise-cut diamond shoulders, the second with a cultured freshwater pearl to a plain band, second stamped '18K', ring sizes J–L. £300–£400

245

A CULTURED PEARL NECKLACE, comprising three rows of graduated cultured pearls, (clasp deficient), length 39cm. £500–£700





246

A TURQUOISE AND DIAMOND BROOCH BY VOURAKIS, CIRCA 1960, the stylised flowerhead set throughout with turquoise cabochons, with brilliant and single-cut diamonds to the petals, with ropetwist detailing, signed, stamped 'K18', numbered, total diamond weight approximately 1.10 carats, length 45mm. £700-£900

247

A TURQUOISE AND DIAMOND RING AND EARRING SUITE, the ring set with a turquoise cabochon within whorl surround of single-cut diamonds, to a basket mount with brush finished band, the earrings en suite, (turquoise untested), stamped '585', total diamond weight approximately 0.70 carat, ring size N-O. £500-£700



248

A TURQUOISE TORC BANGLE, of ropetwist form, the terminals inset with oval turquoise cabochons, inner diameter 6.5cm. £500-£700

According to a PMI test on an XRF Analyzer, the bangle is testing as 17ct gold.

249

A TURQUOISE AND DIAMOND BANGLE, the hinged bangle set to the front with a series of turquoise cabochon and brilliant-cut diamond clusters, stamped '18K 750', total diamond weight approximately 2.70 carats, inner diameter 6cm. £2,000-£3,000





250

A MID 20TH CENTURY AMETHYST AND DIAMOND BROOCH, of Art Deco style, the pierced volutes set throughout with baguette and single-cut diamonds, with a step-cut amethyst to the centre, stamped '18K', associated case by Pearce, Nottingham, total diamond weight approximately 1.00 carat, length 45mm. **£500–£700**



251

A DIAMOND DOUBLE-CLIP BROOCH, CIRCA 1930, the stylised bow set throughout with brilliant, single and calibré-cut diamonds, total diamond weight very approximately 5.50 carats, length 5cm. **£1,200–£1,500**



252

A PAIR OF DIAMOND EAR CLIPS BY ADLER, the knifewire fans with a brilliant-cut diamond cluster to the centre and with a similarly-set border, stamped '750', signed 'adler', total diamond weight approximately 3.60 carats, length 40mm. **£2,800–£3,400**



253

AN ART DECO DIAMOND DOUBLE-CLIP BROOCH, CIRCA 1930, of pierced ribbon design, set throughout with baguette, brilliant and single-cut diamonds, mounted in platinum, total diamond weight approximately 8.00 carats, length 6.5cm. **£2,000–£3,000**



254

A DIAMOND NECKLACE, the tapering knifewire collar of openwork lattice design, set throughout with brilliant-cut diamonds, French import mark, stamped '750', cased, total diamond weight approximately 19.00 carats, length 38cm.

£7,000–£9,000



255

A PAIR OF OPAL TRIPLET AND DIAMOND SET EARRINGS, each comprising an opal triplet cabochon with vari-cut diamond highlights, to post fittings, *total diamond weight approximately 0.35 carat, length approximately 17mm.* £400–£600



256

A DIAMOND ETERNITY RING, set throughout with single-cut diamonds, *total diamond weight approximately 0.70 carat, ring size M.* £200–£300



257

A BLACK OPAL AND DIAMOND CLUSTER RING, the opal cabochon claw-set within a surround of brilliant-cut diamonds, the shank stamped '18ct', *total diamond weight approximately 1.15 carats, ring size M½.* £1,000–£1,500



258

A DIAMOND RING, the central brilliant-cut diamond set between staggered baguette-cut diamonds, *principal diamond approximately 0.60 carat, ring size I–J.* £400–£600



259

A LATE 19TH CENTURY SAPPHIRE AND DIAMOND BANGLE, set to the front with a sapphire and old brilliant-cut diamond cluster between a series of graduated rose-cut diamonds in foliate surrounds, mounted in gold, maker's mark 'FK', Austro-Hungarian assay mark, *total old brilliant-cut diamond weight approximately 0.60 carat, inner dimensions 6 x 5cm.* £1,000–£1,500

260

A PAIR OF EMERALD AND DIAMOND CLUSTER EAR CLIPS, channel-set with brilliant-cut diamonds and calibr -cut emeralds, beneath an oval mixed-cut emerald and diamond cluster surmount, stamped '14KT', total diamond weight approximately 0.70 carat, length 17mm. **£500-£700**



261

A PAIR OF EMERALD AND DIAMOND EAR STUDS, each set with an emerald cabochon in a surround of brilliant-cut diamonds, stamped '750', total diamond weight approximately 0.95 carat, length 10mm. **£200-£300**



262

A LATE 19TH CENTURY OPAL AND DIAMOND RING, the graduated opal cabochons each within a surround of rose-cut diamonds, between carved scroll shoulders to a reeded hoop, mounted in gold, ring size L. **£750-£800**



263

AN EMERALD AND DIAMOND CLUSTER RING, the step-cut emerald claw-set within a surround of brilliant-cut diamonds, to similarly-set bifurcated shoulders, total diamond weight approximately 1.45 carats, ring size H. **£2,000-£3,000**



264

AN OPAL AND DIAMOND BANGLE, set to the front with oval and heart-shaped opal cabochons, within an openwork surround of brilliant and single-cut diamonds, to a knifewire hoop, stamped '14K', total diamond weight approximately 3.10 carats, inner diameter 6cm. **£3,000-£4,000**





265

A LATE 19TH CENTURY DIAMOND BAR BROOCH, the crescent and heart set throughout with old brilliant-cut diamonds, mounted in silver and gold, *total diamond weight approximately 1.30 carats, length 7cm.* £300–£500



266

A LATE 19TH CENTURY GEM-SET DOUBLE HEART BROOCH, the twinned heart motif set with a circular-cut sapphire and ruby respectively, to a surround of rose-cut diamonds and similarly-set bow surmount, the bar with pearl terminals, mounted in silver and gold, (pearls untested), *length 5cm.* £800–£1,200



267

A 19TH CENTURY GEM-SET JARDINIÈRE BROOCH/PENDANT, the baluster vase supporting flowers and foliage, set throughout with old brilliant and rose-cut diamonds, rubies and emeralds, with a seed pearl highlight, mounted in silver and gold, (later pendant fitting), *cased, length 30.5mm.* £800–£1,000



268

A LATE 19TH CENTURY GEM-SET BROOCH, designed as a three leaf clover and set throughout with circular-cut rubies, emeralds and old-brilliant cut diamonds, mounted in silver and gold, (later brooch and pendant fittings), *total diamond weight approximately 0.65 carat, length 30mm.* £500–£700



269

TWO EARLY 20TH CENTURY ENAMEL FLOWER BROOCHES, the first modelled as a purple enamel pansy with an old brilliant-cut diamond to the centre, the second designed as a seed pearl foliate bar brooch, with central enamel flowerhead, *first brooch length 44.5cm.* £240–£300



270

A LATE 19TH CENTURY AUSTRO-HUNGARIAN FRINGE NECKLACE, the quatrefoil links set with garnets, pearls and green gemstones, suspending similarly-set drops and leading to a chandelier frontispiece, with blue and white spotted enamel decoration throughout, mounted in silver, (some stones deficient, pearls untested), length 33.5cm with additional 9cm chain extension.

£600–£800



271

AN ART DECO RUBY AND DIAMOND TARGET RING, the transitional-cut diamond set within a surround of calibré-cut rubies, to diamond-set shoulders, mounted in platinum, *total diamond weight approximately 1.35 carats, ring size approximately J–K.*

£1,500–£2,000



272

A DIAMOND SINGLE STONE RING, the brilliant-cut diamond, *weighing 2.19 carats*, within a textured flowerhead surround, stamped '18ct plat', *ring size O.*

£4,000–£6,000

273

A FANCY YELLOW DIAMOND RING, the cut-cornered Fancy Yellow diamond, weighing 4.13 carats, between shoulders set with brilliant-cut diamonds, mounted in 18ct gold, UK hallmark, ring size K. £8,000–£10,000

Accompanied by a report from GIA stating that the diamond is natural Fancy Yellow colour, SI2 clarity. Report number 15123042, dated 21 April 2006.





274

AN 18CT GOLD FANCY-LINK NECKLACE BY DAVID MORRIS, 1972, the textured bicolour links of open helix design, with polished spoke detailing, signed 'David Morris', London hallmark, numbered '62', length 56cm. £1,800–£2,200



275

A DIAMOND RING, of crossover design, the principal brilliant-cut diamond between similarly-set diamond shoulders, mounted in 18ct gold, London hallmark for 2022, total diamond weight approximately 0.55 carat, size J. £400–£600

Accompanied by a GIA Dossier report card stating that the principal diamond weighing 0.40 carat is G colour, VVS2 clarity. Report number 7428655455, dated 16 March 2022.

276

A CHAIN NECKLACE, of anchor-link design, stamped '375', signed 'Balestra', length 55cm. £200–£300





277

A PAIR OF FISH CUFFLINKS BY TIFFANY & CO., CIRCA 1970, each plain polished panel with applied textured fish, with a circular-cut ruby eye, to hinged T-bar terminals, signed, stamped '14K', panel length 32mm.

£1,000–£1,500



278

A DIAMOND PENDANT, the heart-shaped pendant set with a heart-shaped diamond, suspended from an 18ct gold woven chain, chain with UK import mark, pendant length 18mm, chain length 40.5cm.

£300–£500

279

AN 18CT GOLD 'ZODIAC' PENDANT BY ASPREY, 1981, the oval panel depicting a ram for Aries, within a raised polished border, signed 'Asprey / London', London hallmark, maker's mark, maker's case, length 37mm.

£300–£500



280

A GEM-SET LEAF BROOCH, CIRCA 1960, the leaves with reeded detailing and set with circular-cut sapphires and brilliant-cut diamonds, total diamond weight approximately 0.70 carat, length 7cm.

£700–£900



281

A LEAF BROOCH, CIRCA 1950, FRENCH, of stylised foliate design with diamond-set tie, partial maker's mark, French assay marks, numbered '694', length 8.6cm.

£550–£600

According to a PMI test on an XRF Analyzer, the brooch is testing as 18ct gold.



282

A NECKLACE AND BRACELET SUITE, of woven fancy-link design, the terminals decorated with bead and wirework detailing and set with ruby, emerald and sapphire cabochons, the clasps each with wraparound ropetwist effect, (one emerald deficient), stamped '14Kt Italy', necklace length 44cm bracelet length 20cm. £2,600-£3,000



283

A RUBY, EMERALD AND DIAMOND BRACELET BY BOUCHERON, designed as three rows of curved fancy-shaped links set with brilliant-cut diamonds and spaced by collets of square-cut rubies or emeralds, signed 'Boucheron', numbered '4735', French assay marks, maker's mark, *total diamond weight approximately 5.60 carats, length 17.8cm.*

£10,000–£15,000





284

A DIAMOND NECKLACE, later adapted from a bracelet, composed of polished lozenge-shaped links spaced by brilliant-cut diamonds, the whole suspended by a fancy-link chain, total diamond weight approximately 1.35 carats, length 39cm. £700–£900



285

A GARNET BRACELET BY BOUCHERON, the hoop-shaped links with textured finish, two set to the centre with circular fancy-cut garnets, signed 'Boucheron', numbered, stamped 'OR 750', length 18cm. £800–£1,000

286 Y

A CORAL AND DIAMOND RING AND EAR CLIP SUITE, the circular *Corallium Rubrum* beads each in a bicolour surround set with single-cut diamonds, together with a coral and diamond dress ring, and three coral-coloured bead necklaces and a pair of ear clips, first ring size O, second ring size N½. £1,200–£1,500





287 Y

A MID 20TH CENTURY CORAL, ONYX AND DIAMOND BROOCH/PENDANT, the lozenge-shaped brooch inset with polished onyx, a square-shaped *Corallium Rubrum* panel and with brilliant-cut diamond detailing, total diamond weight approximately 0.60 carat, length 6cm. £400–£600

288 Y

A PAIR OF CORAL AND DIAMOND EAR CLIPS, each curved *Corallium Rubrum* panel diagonally inset with a series of single-cut diamonds, stamped '14k 585', length 20mm. £300–£400



289 Y

A CORAL AND GEM-SET RING AND EAR CLIP SUITE, the ring set with a *Corallium Rubrum* cabochon claw-set within a whorl surround of calibre-cut onyx spaced by brilliant-cut diamonds, the ear clips en suite, total diamond weight approximately 2.00 carats, ring size H½.

£1,200–£1,500



290

AN AMBER BEAD NECKLACE, comprising 31 graduated beads, measuring approximately 15.5 - 22mm, necklace length 72cm. £300–£500

According to a verbal test from GCS the beads are confirmed as natural amber, with no indications of treatment. Verbal report number 5784-2294.





291

A DIAMOND BROOCH / PENDANT, CIRCA 1890, of openwork flowerhead design, set throughout with cushion, old brilliant and rose-cut diamonds, mounted in silver and gold, total diamond weight approximately 3.25 carats, length including bale 44mm. £2,000–£3,000



292

A PEARL AND DIAMOND THREE STONE RING, the bouton-shaped pearl between two old brilliant-cut diamonds, stamped '18ct', (pearl untested), total diamond weight approximately 0.40 carat, ring size P½. £300–£500



293

A LATE 19TH CENTURY EMERALD AND DIAMOND THREE STONE RING, the step-cut emerald claw set between two old brilliant-cut diamonds, mounted in gold, total diamond weight approximately 1.70 carats, ring size Q. £1,500–£2,000

294

A DIAMOND CLUSTER RING, the three principal old brilliant-cut diamonds collet-set within a scalloped surround of similarly-cut diamonds, total diamond weight approximately 1.25 carats, ring size M½. £600–£800



A two-row pearl necklace is displayed against a dark, reflective background. The necklace consists of two rows of pearls. The top row features larger, graduated pearls, while the bottom row consists of smaller pearls interspersed with tiny seed pearl spacers. The necklace is fastened with a clasp that features a central pearl surrounded by a cluster of diamonds.

295

A NATURAL PEARL NECKLACE, the two rows of graduated pearls, measuring approximately 4.5–7.2mm, with seed pearl spacers between, to a 19th century pearl and diamond cluster clasp, mounted in gold, length of shortest row 38cm. **£8,000–£10,000**

Provenance: According to a report from GCS the pearls are testing as natural saltwater origin. Report number 5784-1949, dated 9 April 2024.



296

A CULTURED PEARL AND DIAMOND PENDANT, the brilliant and baguette-cut diamond surmount above a baroque-shaped cultured pearl drop, the whole suspended from a fancy-link chain, *pendant length 30mm.* £300–£500



297

A PAIR OF 19TH CENTURY PEARL AND DIAMOND EARRINGS, each set with an old cushion-shaped diamond suspending a baroque-shaped pearl drop, mounted in silver and gold, (pearls untested), *total diamond weight approximately 1.05 carats, length 41mm.* £1,500–£2,000



298

A MID 20TH CENTURY CULTURED PEARL AND DIAMOND RING, the baroque-shaped cultured pearl to a single-cut diamond-set foliate mount and wirework band, *ring size K–L.* £200–£300



299

A CULTURED PEARL AND JADE DRESS RING, of crossover design, set with two baroque-shaped cultured pearls between pear-shaped jade cabochon shoulders (jade untested), stamped 'K14WG', *ring size M.* £300–£500



300

AN 18CT GOLD SAPPHIRE AND DIAMOND CLUSTER RING, the oval mixed-cut sapphire claw-set within a surround of brilliant-cut diamonds, London hallmark, *total diamond weight approximately 1.25 carats, ring size M½.* £1,000–£1,500



301

A PAIR OF NATURAL PEARL AND DIAMOND EARRINGS, each pearl, measuring approximately 12.0 x 12.2 x 9.8mm and 11.1 x 12.3 x 8.3mm, beneath brilliant-cut diamond-set surmounts, length 20mm. £2,000–£3,000

According to a verbal report from GCS, the pearls are of natural saltwater origin. Verbal report number 5784-2181.



302

AN EARLY 20TH CENTURY NATURAL PEARL AND DIAMOND PENDANT, the baroque-shaped pearl of grey tint, measuring approximately 13.5 x 12mm, beneath a rose-cut diamond cap and articulated old brilliant-cut diamond surmount, suspended from an unassociated cable-link chain, pendant length 27mm. £800–£1,200

According to a report from GCS the pearl is natural saltwater. Verbal report number 5784-2376.



303

A PAIR OF MID 20TH CENTURY CULTURED PEARL AND DIAMOND EAR CLIPS, of whorl design, set throughout with graduated brilliant-cut diamonds, with cultured pearls to the centre, stamped '750', length 26mm. £800–£1,200

304

AN EARLY 20TH CENTURY PEARL AND DIAMOND MISTLETOE RING, the crossover ring designed as diamond-set mistletoe sprigs with pearl berries, to a reeded shank, (pearls untested), ring size L. £1,000–£1,500





305

A DIAMOND AND HARDSTONE NECKLACE, set with a rose-cut diamond within an openwork whorl surround, set throughout with brilliant-cut diamonds and containing a simulated turquoise bead, the whole suspended from a cable-link chain, *pendant length 24mm, chain length 53.5cm.* **£600–£800**

Provenance: Retailled by Barney's, Los Angeles.

According to a PMI test on an XRF Analyzer, the necklace is testing as platinum.



306

A DIAMOND 'SHAKE' PENDANT ON CHAIN BY RENEE LEWIS, the circular glazed pendant encasing multiple brilliant and single-cut diamonds of blue tint, the mount signed 'Renee Lewis', suspended from a fine beaded chain, clasp stamped '750', (diamonds untested), *pendant diameter 22mm, chain length 43cm.* **£1,000–£1,500**

New York designer Renee Lewis first created her iconic handmade 'Shake' designs in the 1980s.



307

A RUBY AND DIAMOND CLUSTER RING, the pear-shaped ruby set within a brilliant-cut diamond surround between vari-cut diamond shoulders, mounted in 18ct gold, London hallmark and European convention mark, *total diamond weight approximately 1.30 carats, ring size N.* **£2,000–£3,000**



308

A SAPPHIRE AND DIAMOND RING, of crossover design, each side terminating in a flowerhead set with circular-cut sapphires and brilliant-cut diamonds, between shoulders set with calibr e-cut sapphires and diamonds, stamped 'IRID.PLAT', numbered '60624', *total diamond weight approximately 0.75 carat, ring size L.* **£1,000–£1,200**



309

AN 18CT WHITE GOLD RUBY AND DIAMOND CLUSTER RING, 1977, the oval mixed-cut ruby claw-set within a surround of brilliant-cut diamonds, London hallmark, *total diamond weight approximately 1.15 carats, ring size N.* **£600–£800**



310

A SAPPHIRE AND DIAMOND CROSS PENDANT AND CHAIN BY THEO FENNEL, the cross pavé-set with circular-cut sapphires and with brilliant-cut diamond detailing, suspended from a fancy-link chain, mounted in 18ct gold, pendant signed, chain with maker's monogram, both with UK hallmarks and maker's marks, maker's case, pendant length 47mm, chain length 45cm. £2,400–£3,000



311

A PAIR OF DIAMOND KNOT EAR STUDS BY THEO FENNEL, set throughout with brilliant-cut diamonds, mounted in 18ct gold, signed, UK hallmark, maker's case, total diamond weight approximately 0.65 carat, length 12mm. £1,200–£1,500

312

AN AMETHYST AND DIAMOND DRESS RING BY CARTIER, the cushion-shaped fancy-cut amethyst with brilliant-cut diamond-set claws, between similarly-cut diamond shoulders, mounted in 18ct gold, maker's mark, signed 'Cartier', numbered, French assay mark, European convention mark, ring size J. £1,000–£1,500



313

AN AQUAMARINE AND DIAMOND RING, the step-cut aquamarine between brilliant-cut diamond shoulders, stamped '750', ring size P. £600–£800



314

AN 18CT GOLD NECKLACE BY THEO FENNEL, 1980, the interlocking chain with maker's mark 'TF' and Birmingham assay marks, length 45cm. £200–£300





315

AN ART DECO RUBY AND DIAMOND BROOCH, CIRCA 1930, the open circlet set throughout with transitional-cut diamonds and with step-cut ruby highlights, mounted in platinum, (later brooch fitting), *total diamond weight approximately 2.20 carats, diameter 23mm.* **£800–£1,200**



316

A MID 20TH CENTURY DIAMOND COMBINATION JEWEL, the flowerhead ear clips set throughout with graduated brilliant-cut diamonds, with original frame to enable brooch conversion, *total diamond weight approximately 4.00 carats, length 5cm.* **£1,500–£2,000**



317

AN ART DECO DIAMOND BROOCH, CIRCA 1930, the openwork panel set with a central old brilliant-cut diamond, *weighing 1.96 carats*, within a similarly-set surround, mounted in platinum and gold, *remaining total diamond weight approximately 3.70 carats, length 48mm.* **£2,600–£3,000**

318

A DIAMOND 'C DE CARTIER' NECKLACE BY CARTIER, the brilliant-cut diamond suspended from a cable-link chain, signed 'Cartier', stamped '750', numbered '93894A', *diamond weight approximately 1.60 carats, chain length 40.5cm.* £8,000–£10,000

Accompanied by a report from GCS stating that the diamond weighing approximately 1.60 carats is F / G colour and VVS1 / VVS2 clarity. Report number 5784-2295, dated 14 May 2024.



319

A DIAMOND THREE STONE RING, set with three graduated old brilliant-cut diamonds, indistinctly stamped '18ct', *total diamond weight approximately 1.60 carats, ring size Q½.* £1,700–£2,000

320

A SAPPHIRE AND DIAMOND PLAQUE RING, the cushion-shaped sapphire in a stepped two-row surround of old brilliant-cut diamonds, between reeded shoulders, *total diamond weight approximately 1.15 carats, ring size P.* £1,200–£1,500





321

A DIAMOND RIVIÈRE NECKLACE, collet-set with a graduated row of brilliant-cut diamonds, stamped '750', total diamond weight approximately 7.75 carats, length 40.5cm. **£3,000–£5,000**



322

AN AMETHYST AND DIAMOND DRESS RING, the cushion-cut amethyst within an openwork basket setting of scroll design set with rose-cut diamonds, between trifurcated shoulders set with single-cut diamonds, to a reeded hoop, ring size L½.

£600–££800



323

A PAIR OF DIAMOND EAR PENDANTS, the bombé surmounts and pear-shaped drops reverse-set with brilliant-cut diamonds of brown tint, spaced by a row of brilliant-cut diamonds in claw settings, (diamonds untested for natural colour), stamped '18K 750', total diamond weight very approximately 15.00 carats, length 6.5cm. **£3,000–£4,000**

324

A COLOURED DIAMOND AND DIAMOND RING, set with a cushion-cut diamond of yellow tint, weighing 1.61 carats, between two pear-shaped diamonds, partial French maker's mark, total colourless diamond weight approximately 0.50 carat, ring size J. **£2,400–£3,000**

According to a verbal report from GCS, the cushion-cut diamond is natural Fancy Deep Brownish Orangey Yellow colour, I1 clarity. Verbal report number 5784-1948.



325

A DIAMOND RING, the pear-cut diamond of pink tint, weighing 0.70 carat, claw-set between two tapered baguette-cut diamonds, to a plain polished band, stamped '750', Birmingham assay mark, pink diamond weight 0.70 carat, ring size L½. **£2,000–£3,000**

Accompanied by a GIA coloured diamond report stating the diamond is a natural Fancy Purplish Pink colour. Report number 5172673398, dated 20 June 2016.





326

A DIAMOND NOVELTY NECKLACE, the pendant designed as a stylised openwork giraffe head, with brilliant-cut diamond detailing, suspended from an integral cable-link chain leading to a finer cable-link neckchain, mounted in 18ct gold, UK hallmark, sponsor's mark 'Ca', numbered, chain length adjustable, giraffe head 45mm. £700–£900



327

A 9CT GOLD SERPENT RING, modelled as a coiled serpent, with synthetic ruby eyes and textured finish, Birmingham hallmark for 1994, maker's mark 'SH', ring size R. £200–£300



328

A DIAMOND RING, the bicoloured band with a cartouche motif to the front, pavé-set with brilliant-cut diamonds, stamped '750', ring size O. £200–£300



329

A COLOURED DIAMOND ETERNITY RING BY GRAFF, set with a continuous row of princess-cut diamonds of yellow tint, (diamonds untested for natural colour), signed 'Graff', total diamond weight approximately 3.00 carats, ring size L. £3,000–£5,000

330

A NOVELTY PENDANT, the bicolour pendant designed as a stylised elephant with articulated tail and feet and with brilliant-cut diamond highlights, suspended from a ropetwist chain, Portuguese assay marks, chain length 46cm, pendant length 35mm. £400–£600



331

A GEM-SET ELEPHANT PENDANT, the polished elephant with circular-cut ruby, emerald and sapphire highlights and brilliant-cut diamond detailing, stamped '750', length 35mm. £1,500–£2,000

332

A LATE 19TH CENTURY GEM-SET BROOCH, designed as a beetle, the body set with a garnet cabochon, the legs and head set with rose-cut diamonds, with red gem-set eyes, mounted in silver and gold, length 34mm. £800–£1,200



333

A FRENCH GEM-SET LEOPARD BROOCH, the 18ct gold leopard realistically modelled with black enamel spots, brilliant-cut diamond collar and emerald eye, sitting atop a polished tortoiseshell branch, French assay mark, maker's mark for José Garcia Vasquez, London import mark for 1989, length 6.5cm. £1,000–£1,500



334

A HARDSTONE CAMEO SUITE, CIRCA 1860, FRENCH, comprising a pendant, pair of ear pendants, and two studs, each centred with a circular hardstone cameo depicting the Goddess Diana/Artemis in profile, gold mounted, within a pearl surround and edged with a ropewist border, the ear pendants and studs of conforming design, French eagle's head guarantee marks, lozenge maker's marks, in fitted case, pendant length 5.8cm.

£2,600–£3,000





335

A 19TH CENTURY JET AND SHELL CAMEO NECKLACE, the oval shell cameo carved to depict the gorgon Medusa in profile, with wings in her hair and serpents encircling her neck, with carved jet pendant mount of ropetwist form, suspended from a carved jet chain necklace, length 49cm. £400-£600

336

A LATE 19TH CENTURY HARDSTONE CAMEO PENDANT, the oval hardstone carved to depict the profile of a lady in Elizabethan dress, within a foliate surround set with rose-cut diamonds and seed pearls and suspending a pearl drop below, mounted in silver and gold, (pearls untested), length including bale 6.3cm. £1,000-£1,500



337

A MID 19TH CENTURY HARDSTONE CAMEO BROOCH, carved to depict a Bacchante and set within a surround of seed pearls, mounted in gold, (brooch fitting broken), length 45mm. £400-£600



338

AN EMERALD AND DIAMOND NECKLACE, RING AND EARRING SUITE BY PETER KIRKEBÆK FOR HALBERSTADT, the necklace set with a step-cut emerald within a surround of calibr  and princess-cut diamonds, between similarly-set fan-shaped panels leading to a brick-link collar; the ring and earrings en suite, necklace and ring signed 'Kirkeb k for Halberstadt, the necklace set with a step-cut emerald within a ', necklace and earrings stamped 'AH' for A. Halberstadt, all stamped '750', retailer's fitted case, *total emerald weight approximately 16.00 carats, total diamond weight approximately 32.80 carats, necklace length 42cm, earring length 18mm, ring size M–N.* **£18,000–£24,000**

Accompanied by a report from GCS stating that the emerald in the necklace is Colombian origin with indications of moderate clarity enhancement with resin. Report number 5784-2447, dated 9 May 2024.

Accompanied by a report from GCS stating that the emerald in the ring is Colombian origin with indications of moderate clarity enhancement with resin. Report number 5784-2448, dated 9 May 2024.

Accompanied by a report from GCS stating that the emeralds in the earrings are Colombian origin with indications of minor to moderate clarity enhancement with resin. Report number 5784-2449, dated 9 May 2024. Accompanied by a copy of the original designs with detailed gemstone measurements for the suite, each page with stamped address signature for Peter Kirkeb k.

With additional copy of a single page of the original invoice from Halberstadt.



339

A SAPPHIRE AND DIAMOND CLIP, CIRCA 1940, the odeonesque scroll of bicolour design, set with brilliant-cut diamonds and calibr -cut sapphires, mounted in platinum and gold, total diamond weight approximately 1.35 carats, length 30mm.
£700-£900



340

A PAIR OF RUBY AND DIAMOND EARRINGS, the ribbon scrolls set with calibr -cut rubies and diamonds and with brilliant-cut diamond highlights, stamped '750', total diamond weight approximately 3.00 carats, length 36mm.
£1,200-£1,500

341

A GEM-SET NECKLACE, the curb-link longchain interspersed with clusters each set with a ruby, emerald or sapphire cabochon within a surround of brilliant-cut diamonds, stamped '750' and '18K', total diamond weight approximately 4.50 carats, length 75cm.
£5,500-£6,000



342

A DIAMOND RING BY CARTIER, the principal brilliant-cut diamond, *weighing 1.54 carats*, between similarly-cut diamond-set shoulders, mounted in 18ct gold, signed 'Cartier', numbered, London hallmark, *total diamond weight approximately 2.15 carats*, ring size M-M½. £6,000–£8,000

Accompanied by a report from GCS stating the brilliant-cut diamond weighing 1.54 carats is F colour, VS2 clarity. Report number 5784-2297, dated 14 May 2024





343

A GEM-SET RING BY MARINA B, set with an oval blue topaz cabochon with green gemstone cabochons to either side, with polished onyx detailing and brilliant-cut diamond highlights to the gallery, signed, maker's mark, numbered, stamped '750', ring size L.

£800–£1,200



344

A DIAMOND WHORL RING, the central brilliant-cut diamond, weighing 2.35 carats, claw set within a three row scroll surround of similarly-cut diamonds, in a raised wirework setting, stamped '18k', remaining total diamond weight approximately 1.50 carats, ring size K.

£4,000–£6,000

According to a verbal report from GCS, the diamond weighing 2.35 carats is colour L and clarity SI1. Verbal report number 5784-2176.

345

A FANCY-LINK BRACELET BY BUCCELLATI, the tricolour bracelet formed of interlocking domed links each with a Florentine finish, signed 'Buccellati', maker's mark for 'Mabuti S.r.l.', Italian assay mark, stamped '750', length 20cm.

£1,600–£2,000



346

A SAPPHIRE AND DIAMOND 'DOPPIO CUORE' NECKLACE, RING AND EAR CLIPS BY BULGARI, the necklace designed as a series of interlocking links, pavé-set with chevrons of brilliant-cut diamonds and leading to a frontispiece set with five sapphire cabochons, the dress ring similarly-set and with reeded detailing to the shoulders, the ear clips additionally set with an emerald cabochon, mounted in 18ct gold, signed 'BVLGARI', Italian assay marks, necklace with London import marks for 1992, earrings and ring with London import marks for 1988, maker's pouch, *total diamond weight approximately 6.40 carats, necklace length 42.5cm, ring size M, ear clip length 21mm.* (3). **£20,000–£30,000**

The necklace accompanied by a report from GCS stating that the five sapphires, *total weight approximately 28.88 carats*, are of Sri Lankan origin, with no indications of heating. Report number 5784-2178, dated 8 May 2024.

According to a verbal report from GCS, the sapphires in the ring are of Sri Lankan origin, with no indications of heating. Verbal report number 5784-2179.

According to a verbal report from GCS, the sapphires ear clips are of Sri Lankan origin, with no indications of heating. Verbal report number 5784-2180.





347

A LATE 19TH CENTURY DIAMOND PEDANT, the fleur-de-lys surmount suspending a pear-shaped drop, set throughout with vari-cut diamonds, mounted in silver and gold, suspended from an unassociated cable-link chain, total diamond weight approximately 1.10 carats, pendant length 45mm. £600–£800



348

AN EARLY 20TH CENTURY DIAMOND PENDANT/BROOCH, the openwork cartouche set throughout with old brilliant-cut diamonds and with a pearl highlight to the centre, suspending three pear-shaped diamond drops, mounted in platinum and gold, on later platinum chain, (pearl untested), fitted case by Tessier, total diamond weight approximately 2.10 carats, pendant length 5.2cm. £4,000–£4,400



349

A LATE 19TH CENTURY SAPPHIRE AND DIAMOND FIVE STONE RING, alternately set with circular-set sapphires and old brilliant-cut diamonds, the gallery with scroll decoration, mounted in gold, total diamond weight approximately 0.65 carat, ring size S. £1,000–£1,500



350

AN ANTIQUE DIAMOND FIVE STONE RING, set with a graduated row of old brilliant-cut diamonds, mounted in gold, with bloomed finish, stamped '18CT', maker's mark 'G.F.F', ring size K½. £300–£400



351

A LATE 19TH CENTURY GEM-SET ROCK CRYSTAL PENDANT, the circular polished rock crystal pendant applied with a star-shaped cluster of old brilliant and rose-cut diamonds, with cushion-shaped sapphires and rubies to the cardinal points, mounted in gold, original fitted case, pendant diameter 23mm. £500–£700



352

AN ANTIQUE SAPPHIRE AND GEM SET JEWEL, the central cushion-shaped sapphire within a rose-cut diamond and sapphire cluster surround spaced by pearl highlights, beneath a vari-cut ruby and emerald coronet surmount, to a pierced scrollwork mount set throughout with rose-cut diamonds and suspending three pearl drops, mounted in silver and gold, with pendant and brooch fittings, (pearls untested), length approximately 6.5cm. **£2,400–£3,000**

According to a verbal report from GCS the sapphire is of Sri Lankan origin, with no indications of heating. Verbal report number 5784-1641.

353

A PAIR OF LATE 19TH CENTURY DIAMOND EAR PENDANTS, each set with an old brilliant-cut diamond within a pierced star surround set with vari-cut diamonds and suspending an old pear-shaped diamond drop, mounted in silver and gold, (later hook fittings), cased, total weight of four principal diamonds approximately 1.70 carats, length 45mm. **£2,800–£3,400**



354

AN ANTIQUE GEM-SET PORTRAIT MINIATURE, the glazed miniature depicting a bust length portrait of a lady in late 18th century dress, mounted in gold and centred within a vari gem-set surround, closed back settings, later adapted with brooch fitting, length 30mm. **£150–£200**

Provenance: Please refer to Department for Ivory Submission Reference number.

According to a PMI test on an XRF Analyzer, the mount is testing as 18ct gold and the later brooch fitting is testing as 13ct gold.



355

AN EARLY 20TH CENTURY DIAMOND NAVAL CROWN BROOCH, set throughout with single-cut diamonds, cased by The Goldsmiths & Silversmiths Company Ltd., length 6cm. **£200–£300**





356

A DIAMOND DRESS RING, of crossover design, set with brilliant, single and calibré-cut diamonds, Portuguese assay mark, total diamond weight approximately 0.60 carat, ring size Q. £300–£500



357

A YELLOW SAPPHIRE AND DIAMOND RING, the step-cut sapphire between brilliant-cut diamond shoulders, stamped '750', ring size Q. £600–£800



358

A TRINITY RING, of tricolour design, stamped '750', ring size approximately I. £220–£260



359

A DIAMOND SET 'LOVE' RING BY CARTIER, the screwhead motifs spaced by three brilliant-cut diamonds, signed 'Cartier', numbered, stamped '750', ring size Z+2.5. £1,500–£2,000



360

A 'LES CHAINES' NECKLACE BY CHOPARD, designed as a continuous series of interlocking hoops, with heart-shaped signature drop to the back, signed, stamped '750', length 44cm.
£4,000–£5,000



361

A DIAMOND DRESS RING, set with a princess-cut diamond with similarly-cut diamonds to either side, between graduated brilliant-cut diamond borders, French assay mark, principal diamond approximately 1.00 carat, total diamond weight approximately 3.50 carats, ring size T.
£2,000–£3,000

362

A PAIR OF DIAMOND EAR STUDS BY GRAFF, the brilliant-cut diamonds, weighing 1.63 carats and 1.70 carats, in four claw settings, mounted in platinum, signed 'Graff', numbered '13285', maker's case. £15,000–£20,000

Provenance: Purchased from Graff by the vendor in 2011.

Accompanied by a copy of a report from GIA stating that the diamond weighing 1.63 carats is F colour, IF clarity. Report number 5113426932, dated 31 August 2010.

Accompanied by a copy of a report from GIA stating that the diamond weighing 1.70 carats is F colour, IF clarity. Report number 2117433983, dated 2 September 2010.



363

A PINK SAPPHIRE AND DIAMOND RING, converted from an antique pendant, the oval-cut pink sapphire, *weighing 3.21 carats*, in a cluster surround set with old brilliant-cut diamonds with a further similarly-cut diamond to the cardinal points, *total diamond weight approximately 1.00 carat*, ring size K.

£4,600–£5,000

Accompanied by a copy of a report from GCS stating that the pink sapphire is Sri Lankan origin with no indications of heating. Report number 5776-5613, dated 12 May 2016.





364

A JADE PANEL RING, the pierced jade panel with carved foliate decoration, set to a plain polish band, (jade untested), stamped '750', ring size N. £200–£300



365

A JADE BANGLE, the polished bangle suffused with mottled lilac and green, (jade untested), inner diameter 6cm. £100–£200



366

TWO JEWELLERY DESIGNS, CIRCA 1940, the illustrations in pencil and gouache on paper, depicting proposed designs for a peridot clip, numbered '1' and '3' respectively, paper lengths 11.5cm. £80–£100

367

A COLLECTION OF JEWELLERY, comprising a diamond half-eternity ring, an emerald and diamond pendant on chain, an amethyst pendant on chain, another pendant, and a cameo brooch, various hallmarks and stamps, *various lengths*. (5). **£300–£400**

368

THREE GEM-SET RINGS, comprising a cultured pearl and diamond triple stack ring, a 9ct gold and lapis lazuli dress ring, together with a late 19th century turquoise and diamond ring, mounted in gold, *ring sizes I, N, and J½*. **£400–£500**

369

A COLLECTION JEWELLERY, to include a carved pink bead and cultured pearl necklace, a knot dress ring and earring, a 19th century long gilt chain, assorted costume jewellery, etc., *various lengths*. (Quantity). **£500–£700**

370

FOUR DIAMOND RINGS, set with vari-cut diamonds, one additionally set with a square-cut emerald, *total diamond weight approximately 1.00 carat, ring sizes J–K*. **£500–£700**

According to a PMI test on an XRF analyzer, the first three rings are testing as 16 carat and 17 carat, the emerald set ring testing as palladium.

371

A COLLECTION OF JEWELLERY, comprising an early 19th century pink topaz brooch, in foiled and closed-back gold settings, two gold brooches, circa 1900, an antique diamond single stone ring, a cultured pearl circlet brooch, and a 9ct gold dress ring, London hallmark for 1969, *various lengths and sizes*. (6) **£500–£600**

372

A SMALL COLLECTION OF JEWELLERY, comprising two shell cameos, a diamond bar brooch, two diamond stickpins, and a cased set of six enamel and mother-of-pearl dress buttons, *first cameo length 5cm. (6)* **£200–£300**

373

A 19TH CENTURY EMERALD AND ENAMEL NECKLACE, the engraved links leading to a central scroll frontispiece with scallop and fan detail, with similarly designed clasp and panel motifs to either side, highlighted throughout with blue and white enamel and set with step-cut emeralds, *length 46cm.* **£200–£300**

According to a PMI test on the XRF analyzer, the necklace is testing as gold plated.

374

A COLLECTION OF SIX GEM-SET RINGS, comprising a wirework crossover ring with dragon head motif terminals, an Indian diamond cluster ring with polychrome enamel decoration, a diamond eternity ring, a vari-cut ruby and emerald set band ring, a malachite dress ring and a ruby set panel ring with pierced foliate decoration, *ring sizes approximately I–K.* **£600–£1,000**

375

FOUR DIAMOND RINGS, three of lozenge-shaped cluster design and one of crossover design, all set throughout with vari-cut diamonds and mounted in 9ct gold, UK hallmarks, *ring sizes K–P. (4)* **£600–£600**

376

A COLLECTION OF ANTIQUE JEWELLERY, to include an enamel, pearl and hairwork memorial ring by Sorley of Glasgow, a turquoise and seed pearl bracelet, various hardstone fobs, three 18ct gold rings, etc., *various lengths. (Quantity).* **£500–£700**

377

FIVE PAIRS OF EAR STUDS, to include a pair of 18ct gold textured square studs, a pair of blue zircon studs, a cultured pearl set pair, etc., *various lengths*. (5) **£400–£600**

378

THREE GEM-SET BAND RINGS, two of foliate design and the third of three-row design, each set throughout with a combination of emerald, rubies or diamonds, *total diamond weight approximately 0.75 carat, ring sizes J–K*. **£800–£1,000**

According to a PMI test on an XRF analyzer, the three row emerald and diamond band ring is testing as 13 carat gold, and the two foliate design rings as 9 carat and 16 carat respectively.

379 Y

FOUR LATE 19TH/EARLY 20TH CENTURY BROOCHES, comprising an amethyst-set thistle brooch, a turquoise bar brooch, an amethyst knot brooch, and a Corallium Rubrum and seed pearl brooch, all mounted in gold, *various lengths*. (4) **£120–£150**

380

A GEM-SET PENDANT AND TWO PAIRS OF EARRINGS, comprising a heart-shaped citrine and brilliant-cut diamond pendant, together with a pair of emerald and diamond flowerhead cluster ear studs and a pair of ruby and cultured pearl earrings, the cultured pearl beneath a heart-shaped ruby surmount, *total diamond weight approximately 0.65 carat, pendant length 20mm*. **£300–£500**

381

A SMALL COLLECTION OF JEWELLERY, comprising a citrine dress ring, brooch and pair of ear pendants, together with an aquamarine ring and jade brooch, the carved figure mounted to a stylised bamboo spray, (jade untested), various marks, *ring sizes N–P, pendant length 5cm*. (5) **£400–£500**

382

A SMALL COLLECTION OF JEWELLERY, comprising a ropetwist necklace, stamped '750', a double curb-link chain necklace, stamped '375', a fancy fetter-link bracelet, stamped '9ct', two fine belcher-link chain necklaces and a signet ring, *various lengths*. (Quantity) **£500–£700**

383

A CULTURED FRESHWATER PEARL AND DIAMOND BRACELET, the cultured freshwater pearls terminating in a pierced foliate clasp set throughout with single-cut diamonds, *length approximately 19.5cm*. **£100–£150**

384

FOUR CULTURED PEARL RINGS, the cultured pearls of various tints, two within diamond-set mounts, *total diamond weight approximately 0.60 carat, ring sizes J–K*. **£300–£400**

385

A COLLECTION OF JEWELLERY, comprising a diamond heart pendant, two carnelian and gem-set bead necklaces, a woven silver necklace (broken), a freshwater cultured pearl necklace and matching ear pendants, a gilt metal locket, a pair of amethyst earrings, and a single gem-set ear stud, modelled as a snowman, *total diamond weight approximately 0.55 carat, various lengths*. (Quantity) **£100–£200**

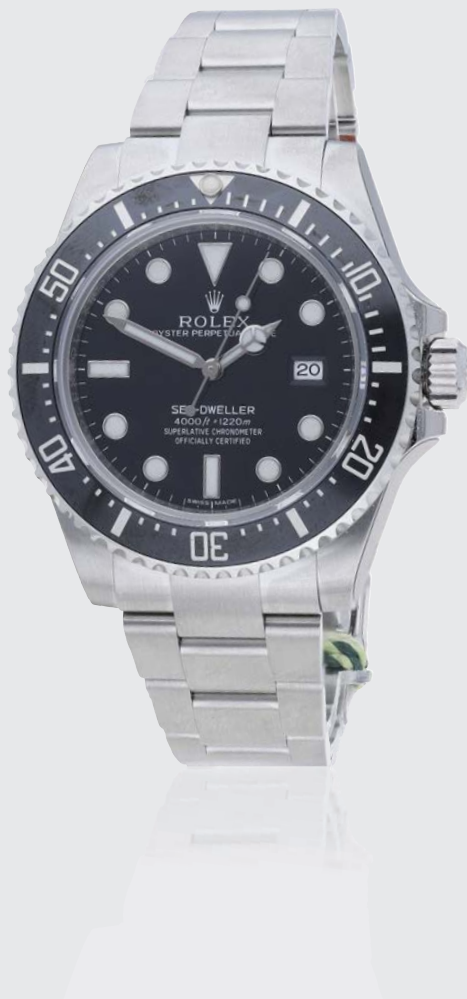
386

A COLLECTION OF JEWELLERY, comprising a gate-link bracelet, a turquoise and seed pearl pendant on chain, a pair of gold knot earrings, a cultured pearl necklace and pair of cultured pearl earrings, *various lengths*. (Quantity). **£400–£500**

WATCHES

LOT

No 436



387

WILLIAM SNASHALL, MARDEN. A SILVER PAIR CASED VERGE WATCH, 1853.

Movement: gilt full plate, verge escapement, pierced and engraved balance cock, no. 81097.

Dial: white enamel, Roman numerals.

Case: silver, inner case with engraved inscription, plain outer case, marker's mark HWG, London hallmark for 1853.

Signed: movement.

Dimensions: diameter 58mm.

Together with a silver Albert chain with T-bar.

£80-£100



388

FRODSHAM & BAKER, LONDON. A SILVER OPEN-FACED CONSULAR CASED WATCH, NO. 7646, 1856.

Movement: gilded full plate, lever escapement, diamond endstone, gilt cap.

Dial: white enamel, Roman numerals, subsidiary seconds.

Case: silver, milled band, engine-turned back with cartouche, London hallmark for 1856.

Signed: dial and movement signed Frodsham & Baker, Gracechurch st, London, no. 7646.

Dimensions: diameter 50mm.

£100-£150

389

DAW, CHEAPSIDE, LONDON. A GOLD HUNTING CASED VERGE WATCH, NO. 13903, 1801.

Movement: gilded full plate, verge escapement, finely pierced and engraved balance cock, no. 13903.

Dial: white enamel, Arabic numerals.

Case: 18ct gold, hinged covers.

Signed: movement.

Dimensions: diameter 52mm.

£700-£900



390

JOSH PENLINGTON, LIVERPOOL. A GOLD HALF-HUNTING CASED KEYLESS WATCH, 1883.

Movement: gilded three quarter plate, lever escapement, no. 15710.

Dial: white enamel, Roman numerals.

Case: 18ct gold, gold cuvette, blue enamel Roman numerals to glazed aperture, engraved monogram to the rear cover, marker's mark HW, London hallmark for 1883.

Signed: dial and movement.

Dimensions: diameter 41mm.

£800-£1,200

391

D. HUMBERT DROZ. A GOLD, ENAMEL AND PEARL-SET WATCH, CIRCA 1790.

Movement: gilded full plate, verge escapement, pierced and engraved balance bridge.

Dial: white enamel, Arabic numerals.

Case: gold, polychrome enamel scene depicting a girl with a dog and puppy, cartouche highlighted by graduated pearls.

Signed: dial and movement.

Dimensions: diameter 38mm.

Together with a later gold and pearl-set bow brooch.

£600–£800



392

SWISS. A GOLD OPEN-FACED KEYLESS WATCH, 1924.

Movement: jewelled lever escapement, no. 252243.

Dial: white enamel, Roman numerals, subsidiary seconds.

Case: 9ct gold, hinged back, gold cuvette with engraved inscription, marker's mark R&S, Birmingham hallmark for 1924.

Signed: unsigned.

Dimensions: diameter 47mm.

£300–£500

393

RACINE. A GOLD HALF-HUNTING CASED QUARTER REPEATING KEYLESS WATCH, CIRCA 1900.

Movement: lever escapement, repeating on coiled gongs.

Dial: white enamel, Roman numerals, subsidiary seconds.

Case: 18ct gold, gold cuvette, black enamel Roman numerals to the glazed aperture.

Signed: dial and movement.

Dimensions: diameter 48.5mm.

£1,000–£1,500



394

UNSIGNED. A GOLD OPEN-FACED KEYLESS WATCH, 1920.

Movement: gilded three quarter plate, lever escapement, no. 341483.

Dial: white enamel, Roman numerals, subsidiary seconds.

Case: 18ct gold, hinged back, gold cuvette, maker's mark R&S, London hallmark for 1920.

Signed: unsigned.

Dimensions: diameter 40.5mm.

£400–£600

395

THOMAS RUSSELL & SON, LIVERPOOL. A GOLD OPEN-FACED WATCH WITH STOP/START SLIDE, 1905.

Movement: gilded three quarter plate, lever escapement, no. 108106.

Dial: white enamel, Roman numerals, outer minute track, centre seconds.

Case: 18ct gold, hinged back, gold cuvette, engraved floral decoration to the band, maker's mark TR, Chester hallmark for 1905.

Signed: dial and movement signed Thos Russell & Son, 12 Church St, Liverpool.

Dimensions: diameter 54mm.

£1,500–£2,000



396

WALTHAM. A GOLD OPEN-FACED KEYLESS WATCH, 1920.

Movement: lever escapement, 17 jewels, no. 22069473.

Dial: white enamel dial, Roman numerals, subsidiary seconds.

Case: 9ct gold, hinged back, gold cuvette, no. 201247, maker's mark A.L.D., Birmingham hallmark for 1920.

Signed: dial and movement.

Dimensions: diameter 49mm.

£300–£500

397

WALTHAM. A GOLD HUNTING CASED KEYLESS WATCH, 1918.

Movement: lever escapement, 23 jewels, no. 16194067.

Dial: white enamel, Roman numerals, subsidiary seconds.

Case: 18ct gold, gold cuvette, no. 147844, maker's mark A.L.D., Birmingham hallmark for 1918

Signed: dial and movement.

Dimensions: diameter 50mm.

£600–£800



398

JAEGER-LECOULTRE. A STAINLESS STEEL AND CHROME PLATED MILITARY ISSUE RAF PILOT'S WATCH, CIRCA 1942.

Movement: cal. 470, manual winding, no. 250148.

Dial: silvered, Arabic numerals, centre seconds.

Case: stainless steel, snap-on back, fixed lugs, no. B 161614, engraved with the Broad Arrow, 6B/159 A23362.

Signed: dial and movement.

Dimensions: diameter 32mm.

£600-£800

Provenance: From the late Bob Culling collection

During the Second World War the RAF navigators and pilots were issued with watches made by brands such as Omega, Longines and Jaeger-LeCoultre.

They are identifiable by the MoD's specifications such as black Arabic numerals, centre seconds, fixed lugs and blued steel non-luminous hands. The cases are marked by the RAF stores reference number 6B/159 which refers to aircraft navigation equipment.



399

INTERNATIONAL WATCH CO. A STAINLESS STEEL WRISTWATCH, CIRCA 1945.

Movement: cal. 83, manual winding, no. 1072555.

Dial: black, Arabic and dot indexes, engine-turned subsidiary seconds.

Case: stainless steel, snap-on back, no. 1100047.

Signed: case, dial and movement.

Dimensions: diameter 34mm.

£200-£300



400

BULOVA. FOUR GOLD PLATED WRISTWATCHES, CIRCA 1940 AND LATER.

Movements: manual winding.

Dials: silvered.

Cases: gold plated.

Signed: cases, dials and movements.

Dimensions: lengths 1st: 32mm; 2nd: 29mm; 3rd: 27.5mm; 4th: 31mm. (4) £150-£200

401

INTERNATIONAL WATCH CO. A GOLD WRISTWATCH, CIRCA 1965.

Movement: Cal. C.88, manual winding.

Dial: silvered, applied Arabic numerals, engine-turned subsidiary seconds.

Case: 9ct gold, snap-on back, no.18928, London hallmark for 1965, back with engraved inscription.

Signed: dial and movement, case with maker's mark DS&S.

Dimensions: diameter 34mm.

£300-£400



402

UNIVERSAL, RETAILED BY FRECCERO. A GOLD WRISTWATCH, CIRCA 1960.

Movement: cal. 262, manual winding.

Dial: silvered, applied Arabic and dagger indexes.

Case: 18ct gold, snap-on back, no. 1513321 112153.

Signed: case, dial and movement.

Dimensions: diameter 34mm.

£200-£300



403

GIRARD-PERREGAUX. THREE STAINLESS STEEL AND CHROME PLATED WRISTWATCHES, CIRCA 1940.

Movements: 1st: manual; 2nd: automatic; 3rd: manual.

Dials: silvered.

Cases: stainless steel.

Signed: cases, dials and movements

Dimensions: 1st: 30mm; 2nd: 35.5mm; 3rd: 35mm. (3)

£150-£200

404

TUDOR. A STAINLESS STEEL WRISTWATCH, REF. 1737, ROYAL, CIRCA 1960.

Movement: manual winding, 17 jewels.

Dial: silvered, applied Arabic numerals, centre seconds.

Case: stainless steel, snap-on, back, no. 508420.

Signed: case, dial and movement.

Dimensions: diameter 34mm.

Together with a later unsigned stainless steel bracelet. £100–£150



405

TUDOR. A STAINLESS STEEL WRISTWATCH, REF. 709, CIRCA 1960.

Movement: manual winding, 17 jewels.

Dial: silvered, Arabic numerals, engine-turned subsidiary seconds.

Case: stainless steel, snap-on back, no. 647715.

Signed: case, dial and movement.

Dimensions: diameter 33mm.

£100–£150

406

TUDOR. A GOLD WRISTWATCH, CIRCA 1953.

Movement: cal. 1187/94, manual winding, 15 jewels.

Dial: silvered, honeycomb pattern, applied Arabic and baton indexes, centre seconds.

Case: 9ct gold, snap-on back, no. 12856, 561161, Birmingham hallmark for 1953.

Signed: dial and movement, case signed Dennison for Rolex.

Dimensions: diameter 30.5mm.

£200–£300



407

OMEGA. AN OVERSIZED CHROME PLATED WRISTWATCH, CIRCA 1940.

Movement: manual winding pocket watch movement.

Dial: silvered, black chapter ring, Arabic numerals, subsidiary seconds.

Case: chrome plated, snap-on back.

Signed: dial and movement.

Dimensions: diameter 43mm.

£200–£300

408

BREMONT. A LIMITED EDITION STAINLESS STEEL AUTOMATIC PILOTS WATCH MADE FOR MEMBERS OF THE ROYAL NAVY FLEET AIR ARM, REF. U-2/RN FAA, CIRCA 2019.

Movement: cal. BE-36AE, automatic, 25 jewels, no. 23265.

Dial: blue, FAA zig zag design, Arabic and baton indexes, apertures for day and date, FAA wings insignia, centre seconds, bi-directional calibrated inner bezel.

Case: stainless steel, DLC treated case barrel, sapphire crystal display back secured by six screws.

Signed: case, dial, movement and buckle.

Dimensions: *diameter 43mm.*

Accessories: certificate, ISO 3159 test certificate, spare Nato style strap, strap tool, leather presentation pouch.

£1,500–£2,000

The Fleet Air Arm was founded in 1914 and is the aviation component of the Royal Navy. Today the largest section of the FAA is the rotary wing section flying four types of helicopters; the Commando Merlin, Commando Wildcat AH1, Wild cat HMA2 and Merlin HM2.

Bremont has a close working relationship with the military and produce timepieces that have been tested beyond any normal call of duty. The U-2/RN FAA watch was produced as a limited edition only available to current and former Naval Air Squadron members.



409

BREMONT. A RARE LIMITED EDITION STAINLESS STEEL DIVER'S WRISTWATCH MADE FOR THE MEMBERS OF THE ROYAL HOUSEHOLD FOR HER MAJESTY THE QUEEN'S PLATINUM JUBILEE, REF. S300/301, SUPERMARINE, CIRCA 2022.

Movement: cal. BE-92AE, automatic, 21 jewels.

Dial: black, Arabic and baton indexes, aperture for date, Royal Coat of Arms at 6 o'clock.

Case: stainless steel, DLC treated case barrel, screw-down back with the Royal Cypher of Queen Elizabeth II, rotating calibrated ceramic bezel, rubber strap, double folding stainless steel buckle.

Signed: case, dial, movement and buckle.

Dimensions: diameter 40mm.

Accessories: warranty card, ISO 3159 certificate, instruction booklet, strap tool, leather case.

£3,000–£5,000

This Bremont Supermarine S300 watch was part of a special commission made by The Royal Mews, a division of the Royal Household, to mark the occasion of Her Majesty The Queen's Platinum Jubilee. The limited production run of 50 pieces were only available to those working for The Royal Household. The dial displays the Royal Coat of Arms and the case back depicts the Royal Cypher of Queen Elizabeth II.

Bremont is an award-winning luxury watch brand based in Henley-on-Thames, England. Founded by brothers Nick and Giles English in 2002, they produce watches inspired by their love of flying and based on the ideals of British watchmaking. All their watches are either COSC or ISO chronometer rated and hand built in the UK.



410

OMEGA. A SQUARE STAINLESS STEEL WRISTWATCH WITH HOODED LUGS, CIRCA 1935.

Movement: manual winding, 15 jewels, no. 8677797.

Dial: silvered two-tone, inner minute track, centre seconds.

Case: stainless steel, snap-on back, hooded lugs, no. 9376533, stainless steel buckle.

Signed: case, dial, movement and buckle.

Dimensions: length including lugs 36mm, width 26mm. £300–£500



411

LECOULTRE. A GOLD PLATED WRISTWATCH WITH ALARM, MEMOVOX, CIRCA 1949.

Movement: cal. 489, manual winding, 17 jewels, no. 693440.

Dial: two-toned, silvered, Arabic and applied baton indexes, centre seconds.

Case: gold plated, snap-on back, stylised lugs, no. T980855.

Signed: dial and movement, case signed LeCoultre & Wadsworth.

Dimensions: diameter 32mm.

£400–£600



412

CHRONOGRAPH SUISSE. A GOLD CHRONOGRAPH WRISTWATCH, ANTIMAGNETIC, CIRCA 1950.

Movement: manual winding, 17 jewels.

Dial: silvered, gilt Arabic and dot indexes, subsidiary dials for constant seconds and 30-minute register.

Case: 18ct gold, metal cuvette, snap-on back, no. 842503 23.

Signed: dial.

Dimensions: diameter 36.5mm.

£340–£400



413

LEONIDAS. A STAINLESS STEEL TRIPLE CALENDAR WRISTWATCH WITH MOON-PHASES, CIRCA 1950.

Movement: cal. 1100, 17 jewels.

Dial: silvered, two-toned, Arabic numerals, apertures for day, month and moon-phases, outer track with date indication.

Case: stainless steel, snap-on back, no. 0151 644415.

Signed: dial and movement.

Dimensions: diameter 35mm.

£200–£300



414

ORIS. A STAINLESS STEEL WRISTWATCH WITH DATE, ANTIMAGNETIC, CIRCA 1950.

Movement: cal. 453, manual winding, 7 jewels.

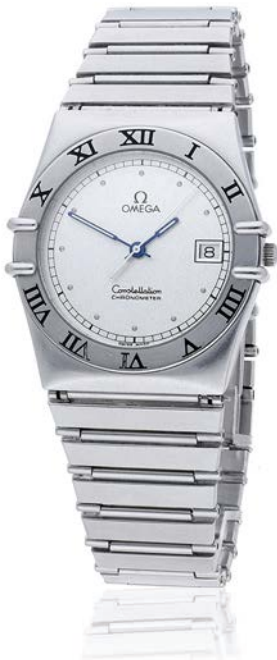
Dial: cream, Arabic numerals, subsidiary seconds, outer track with date indication.

Case: stainless steel, screw-down back.

Signed: case, dial and movement.

Dimensions: diameter 31mm.

£100–£150



415

OMEGA. A STAINLESS STEEL WRISTWATCH WITH DATE, CONSTELLATION, CIRCA 1990.

Movement: quartz.

Dial: silvered, applied dot indexes, aperture for date, centre seconds.

Case: stainless steel, snap-on back, black Roman numerals to the bezel, integrated stainless steel bracelet (no. 1448/431).

Signed: case, dial, movement and bracelet.

Dimensions: diameter 32.5mm, bracelet circumference approximately 195mm.

£200–£300

416

JAEGER-LECOULTRE. A STAINLESS STEEL AUTOMATIC WRISTWATCH WITH DAY AND DATE, CLUB, CIRCA 1970.

Movement: cal. 1906, automatic, 17 jewels.

Dial: silvered, applied baton indexes, apertures for day and date, centre seconds.

Case: stainless steel, screw-down back, no. 1172135, E300105.

Signed: case, dial and movement.

Dimensions: diameter 36mm.

£100–£200



417

OMEGA. A STAINLESS STEEL AUTOMATIC TONNEAU-FORM WRISTWATCH WITH DAY, DATE AND BRACELET, REF. 1660216.3, SEAMASTER, CIRCA 1982.

Movement: cal. 1020, automatic, 17 jewels, no. 45425241.

Dial: silvered, applied baton indexes, apertures for day and date, centre seconds.

Case: stainless steel, snap-on back, no. 3660948.3, stainless steel bracelet.

Signed: case, dial, movement and bracelet.

Dimensions: length 40mm, width 35mm, bracelet circumference approximately 195mm.

£200–£300

418

BUECHE-GIROD. A GOLD RECTANGULAR WRISTWATCH, REF. 7725, CIRCA 1960.

Movement: cal. 67, manual winding, 17 jewels.

Dial: silvered, Roman numerals.

Case: 18ct gold, snap-on back, sapphire cabochon-set winding crown, no. 82941.

Signed: dial and movement.

Dimensions: length including lugs 34.5mm, width 21mm.

£150-£200



419

OMEGA. A GOLD PLATED AUTOMATIC WRISTWATCH WITH DATE AND BRACELET, REF. 1660173, GENÈVE, CIRCA 1974.

Movement: cal. 1012, automatic, 23 jewels, no. 38884136.

Dial: silvered, applied baton indexes, aperture for date, centre seconds.

Case: gold plated, screw-down back, no. 3660832, gold plated bracelet.

Signed: case, dial, movement and bracelet.

Dimensions: diameter 36mm, bracelet circumference approximately 210mm.

£240-£340

420

BAUME & MERCIER. A GOLD PLATED WRISTWATCH, REF. 2533, CIRCA 1960.

Movement: manual winding, 15 jewels.

Dial: black centre, silvered chapter ring, applied baton indexes, centre seconds.

Case: gold plated, snap-on back, no. 534340.

Signed: case, dial and movement.

Dimensions: diameter 33.5mm.

£100-£150



421

OMEGA. TWO GOLD PLATED WRISTWATCHES, REF. 111.077 & REF. 111.07, DE VILLE, CIRCA 1969.

Movements: manual winding.

Dials: 1st: gilt; 2nd: silvered.

Cases: gold plated.

Signed: cases, dials, and movements.

Dimensions: 1st: 32mm; 2nd: 26mm. (2)

£150-£200

422

INTERNATIONAL WATCH CO. A LADY'S STAINLESS STEEL AUTOMATIC WRISTWATCH, CIRCA 1960.

Movement: cal. 44, automatic.

Dial: silvered, applied baton indexes.

Case: stainless steel, snap-on back, no. 1708265.

Signed: case, dial and movement.

Dimensions: diameter 23.5mm.

£50-£70



423

SWISS, A GOLD RECTANGULAR WRISTWATCH, 1933.

Movement: manual winding, 15 jewels.

Dial: silvered, applied Arabic numerals, subsidiary seconds.

Case: 9ct gold, hinged back, engraved initials to the back, no. 1464592, Glasgow import mark for 1933.

Signed: unsigned.

Dimensions: length including lugs 36.5mm, width 21mm.

£80-£100

424

MUST DE CARTIER. A LADY'S GOLD PLATED RECTANGULAR WRISTWATCH, TANK, CIRCA 1980.

Movement: cal. 78-1, manual winding, 17 jewels.

Dial: blue, gilt specks.

Case: gold plated, back secured by four screws, sapphire cabochon-set winding crown, no. 60025 6 081955, gold plated buckle.

Signed: case, dial, movement and buckle.

Dimensions: length 30mm, width 23mm.

£300-£400



425

OMEGA. A STAINLESS STEEL RECTANGULAR WRISTWATCH, CIRCA 1935.

Movement: manual winding, 15 jewels, no. 9146589.

Dial: silvered two-tone, Arabic numerals, subsidiary seconds.

Case: stainless steel, movement cap, snap-on back, no. 8331711.

Signed: case, dial and movement.

Dimensions: length 38mm, width 24mm.

£200-£300

426

OMEGA. A GOLD PLATED RECTANGULAR WRISTWATCH WITH SYNTHETIC TIGER'S EYE DIAL, GENÈVE, CIRCA 1973.

Movement: manual winding, no. 37114182.

Dial: synthetic tiger's eye, Arabic numerals.

Case: gold plated, snap-on back, no. 1110116.

Signed: case, dial and movement.

Dimensions: length 41.5mm, width 29.5mm.

£100-£150



427

GIRARD-PERREGAUX. THREE WRISTWATCHES, CIRCA 1970.

Movements: 1st: automatic; 2nd: quartz; 3rd: automatic.

Dials: 1st: gilt; 2nd: gilt; 3rd: black

Cases: 1st: stainless steel; 2nd: gold plated; 3rd: stainless steel.

Signed: cases, dials and movements.

Dimensions: 1st 35mm; 2nd: length 38mm; 3rd, 33mm.

Together with an unsigned stainless steel bracelet. (3)

£150-£200

428

ZENITH. THREE WRISTWATCHES WITH DATE, CIRCA 1990.

Movements: quartz.

Dials: 1st black; 2nd: silvered; 3rd: silvered.

Cases: stainless steel and gold plated.

Signed: cases, dials and movements.

Dimensions: 1st: 33mm; 2nd: 34mm;

3rd: 31.5mm. (3)

£100-£150



429

OMEGA. A GOLD PLATED AUTOMATIC WRISTWATCH, REF. 2481-1, CIRCA 1950.

Movement: cal. 351, automatic, 17 jewels, no. 12473378.

Dial: silvered, Arabic numerals, applied dagger indexes, centre seconds.

Case: gold plated, snap-on back, stylised lugs.

Signed: case, dial and movement.

Dimensions: diameter 37mm.

£200-£300



430

GRUEN. A GOLD PLATED WRISTWATCH WITH DATE, REF. 1703, PRECISION, CIRCA 1960.

Movement: cal. 1702/03, manual winding, 17 jewels.

Dial: silvered, applied Arabic and dagger indexes, aperture for date, centre seconds.

Case: gold plated, screw-down back.

Signed: case, dial and movement.

Dimensions: diameter 33mm.

£100-£150

431

ZENITH. A GOLD PLATED AUTOMATIC WRISTWATCH WITH DATE, CIRCA 1965.

Movement: cal. 2542PC, automatic, 25 jewels, no. 6880581.

Dial: silvered, applied baton indexes, aperture for date, centre seconds.

Case: gold plated, screw-down back, no. 166D765, gold plated buckle.

Signed: case, dial movement and buckle.

Dimensions: diameter 35.5mm.

£100-£150



432

OMEGA. A GOLD PLATED WRISTWATCH, SEAMASTER DE VILLE, CIRCA 1960.

Movement: manual winding.

Dial: black, applied baton indexes, centre seconds.

Case: gold plated, snap-on back.

Signed: case, dial and movement.

Dimensions: diameter 34mm.

£100-£150

433

OMEGA. A STAINLESS STEEL TONNEAU-FORM AUTOMATIC CHRONOGRAPH WRISTWATCH WITH DAY, DATE, 24-HOUR INDICATION AND BRACELET, REF. ST176.0012, SPEEDMASTER MARK IV, CIRCA 1978.

Movement: cal. 1045, automatic, 17 jewels, no. 41920408.

Dial: black, baton indexes, subsidiary dials for constant seconds, 12-hour register, 24-hour indication, apertures for day and date.

Case: stainless steel, screw-down back, stainless steel bracelet.

Signed: case, dial, movement and bracelet.

Dimensions: length 45mm, width 41.5mm.

Accessories: three spare links.

£1,200–£1,800



434

ROLEX. A STAINLESS STEEL AUTOMATIC DUAL TIME ZONE WRISTWATCH WITH DATE AND BRACELET, REF. 16710, GMT-MASTER II, 'COKE', CIRCA 1994.

Movement: cal. 3185, automatic, 31 jewels.

Dial: black, applied triangular, dot and baton indexes, magnified date aperture, red and white dual time zone hand.

Case: stainless steel Oyster, screw-down back and crown, 24-hour calibrated bezel, no. S355242, stainless steel Oyster bracelet.

Signed: case, dial, movement and bracelet.

Dimensions: diameter 40mm, bracelet circumference approximately 180mm.

Accessories: guarantee, wallet, booklets, tags and presentation case. £7,000–£9,000

Production of the reference 16710 ceased in 2007.



435

TAG HEUER. THREE WRISTWATCHES WITH DATE, PROFESSIONAL, FORMULA 1, CIRCA 1990.

Movements: quartz.

Dials: 1st: luminous; 2nd: blue; 3rd: black.

Cases: stainless steel and rubber.

Signed: cases, dials and movements.

Dimensions: diameters 35mm. (3)

£150–£200

436

ROLEX. A STAINLESS STEEL AUTOMATIC WRISTWATCH WITH DATE AND BRACELET, REF. 116600, SEA-DWELLER, CIRCA 2015.

Movement: cal. 3135, automatic, 31 jewels.

Dial: black, applied dot, baton and triangular indexes, date aperture, centre seconds.

Case: stainless steel Oyster case, screw-down back and crown, unidirectional calibrated ceramic bezel, helium escape valve, stainless steel Oyster fliplock bracelet

Signed: case, dial, movement and bracelet.

Dimensions: *diameter 40mm, bracelet circumference approximately 210mm.*

Accessories: guarantee, leather wallet, booklet, tags, protective bezel cover, presentation case.

£7,000–£10,000

The Rolex Sea-Dweller was developed in the 1960's to meet the needs of professional divers working at greater depths. Helium particles that accumulate within a watch case of a diving watch would brutally expel the glass as the helium gas forced its way out during decompression. So Rolex invented the helium escape valve on the side of the case, this would allow the helium particles to escape through a controlled mechanism

Rolex introduced the reference 116600 in 2014, produced for only three years this model is very desirable within the collectors market.

This ref. 116600 was sold in 2015 and is in perfect unused condition, still retaining the original protective stickers to the case and bracelet.



437

TUDOR. A LADY'S STAINLESS STEEL AND GOLD PLATED AUTOMATIC WRISTWATCH WITH DATE AND BRACELET, PRINCESS OYSTERDATE LADY-SUB, REF. 96093, CIRCA 2000.

Movement: cal. 2671, automatic, 25 jewels.

Dial: white, applied triangular and dot indexes, aperture for date, centre seconds.

Case: stainless steel Oyster case, screw-down back and crown, gold plated bezel, no. B471261, stainless steel and gold plated Jubilee bracelet.

Signed: case, dial, movement and bracelet.

Dimensions: diameter 27mm, bracelet circumference approximately 165mm.

Accessories: guarantee, wallet, booklet, spare links, anchor and presentation case.

£300–£500



438

ROLEX. A STAINLESS STEEL WRISTWATCH WITH BRACELET, REF. 6618, OYSTER PERPETUAL, CIRCA 1969.

Movement: cal. 1161, automatic, 26 jewels.

Dial: silvered, applied baton indexes.

Case: stainless steel Oyster case, screw-down back and crown, no. 2181298, stainless steel Oyster bracelet.

Signed: case, dial, movement and bracelet.

Dimensions: diameter 25mm, bracelet circumference approximately 170mm.

£400–£600

439

ROLEX. A LADY'S STAINLESS STEEL AUTOMATIC WRISTWATCH WITH DATE AND BRACELET, REF. 178240, DATEJUST, CIRCA 2008.

Movement: cal. 2235, automatic, 31 jewels.

Dial: rosé, applied Roman numerals, magnified date aperture.

Case: stainless steel Oyster case, screw-down back and crown, no. M066289, stainless steel Oyster bracelet.

Signed: case, dial, movement and bracelet.

Dimensions: diameter 31mm, bracelet circumference approximately 165mm.

Accessories: guarantee, wallet, tag and presentation case.

£3,000–£5,000



440

ROLEX. A STAINLESS STEEL AUTOMATIC CHRONOGRAPH WRISTWATCH WITH BRACELET, REF. 116520, DAYTONA, CIRCA 2009.

Movement: cal. 4130, automatic, 44 jewels.

Dial: white, applied baton indexes, subsidiary dials for constant seconds, 30-minute and 12-hour registers.

Case: stainless steel Oyster case, screw-down back, crown and chronograph pushers, no. M961485, stainless steel Oyster bracelet.

Signed: case, dial, movement and bracelet.

Dimensions: diameter 40mm, bracelet circumference approximately 180mm

Accessories: guarantee, leather wallet, booklet, service guarantee, two spare links, tags, protective bezel cover, presentation case £12,000–£18,000

The Rolex Daytona is certainly the most famous chronograph watch on the market. Having a long history of producing sports chronograph models in 1963 Rolex launched the Cosmograph Daytona, named after the 24-hours Daytona auto race in Florida which Rolex sponsored at the time

In 2000 Rolex released the reference 116520 Daytona, this marked the introduction of Rolex's first in-house calibre 4130 chronograph movement. Its predecessor, the reference 16520 was powered by the calibre 4035 which was produced by Zenith.

Production of the ref. 116520 ceased in 2016 when Rolex launched the ref. 116500LN with ceramic bezel.

This ref. 116520 was sold in 2009 and is in immaculate condition and comes with all its accessories.



441

GEORG JENSEN. A STAINLESS STEEL BANGLE WATCH, REF. NO. 337, VIVIANNA TORUN, CIRCA 2010.

Movement: quartz.

Dial: mirrored.

Case: stainless steel, back secured by four screws, hinged bangle (XS).

Signed: case.

Dimensions: diameter 26.5mm.

£100-£150



442

HERMÈS. A STAINLESS STEEL AND GOLD WRISTWATCH WITH DATE, CIRCA 1995.

Movement: quartz.

Dial: white, applied stylised Roman numerals, aperture for date, centre seconds.

Case: stainless steel, back secured by six screws, gold bezel.

Signed: dial and case.

Dimensions: diameter 34mm.

Accessories: guarantee card, pouch and box.

£200-£300

443

OMEGA. A STAINLESS STEEL AND GOLD AUTOMATIC WRISTWATCH WITH DAY AND DATE, REF. 168.0054, CONSTELLATION CHRONOMETER, CIRCA 1972.

Movement: cal. 1021, automatic, 23 jewels, no. 35524393.

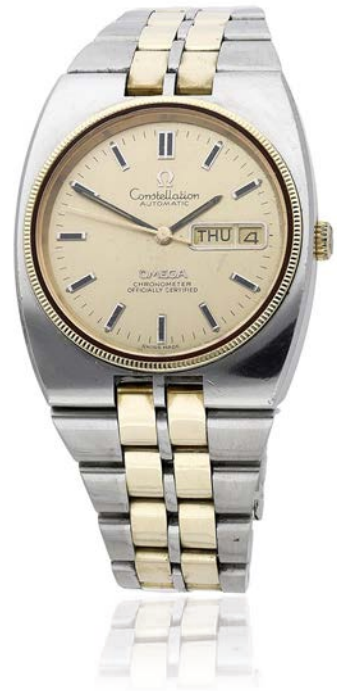
Dial: gilt, applied baton indexes, apertures for day and date, centre seconds.

Case: stainless steel, gold bezel, screw-down back, stainless steel and gold bracelet.

Signed: case, dial, movement and bracelet.

Dimensions: length 40.5mm, width 35.5mm, bracelet circumference approximately 190mm.

£200-£300



444

TISSOT. THREE STAINLESS STEEL WRISTWATCHES, VISODATE & SEASTAR, CIRCA 1950 AND LATER.

Movements: 1st: automatic; 2nd: manual; 3rd: automatic.

Dials: 1st gilt; 2nd: silvered, striped design; 3rd: silvered.

Cases: stainless steel.

Signed: cases, dials and movements.

Dimensions: 1st: 34.5mm; 2nd: 33mm;

3rd: 34mm. (3)

£100-£200

445

OMEGA. A STAINLESS STEEL WRISTWATCH, REF. ST 135.0033, DYNAMIC, CIRCA 1968.

Movement: cal. 601, manual winding.

Dial: two-tone satiné silvered and blue, baton indexes, centre seconds.

Case: stainless steel, satin-finish, screw-down back, Tool-107, stainless steel tapering bracelet (no. 1153/138).

Signed: case, dial, movement and bracelet.

Dimensions: length 36.5mm, width 41.5mm, bracelet circumference approximately 185mm.

£260–£360



446

ULYSSE NARDIN. A STAINLESS STEEL AUTOMATIC TONNEAU-FORM WRISTWATCH WITH DAY AND DATE, CIRCA 1960.

Movement: cal. 2638, automatic.

Dial: silvered, two-tone star-burst pattern, applied baton indexes, apertures for day (in Italian) and date, centre seconds.

Case: stainless steel, screw-down back.

Signed: case, dial and movement.

Dimensions: length including lugs 39mm, width 34mm.

£100–£150

447

OMEGA. A STAINLESS STEEL AUTOMATIC CUSHION-FORM WRISTWATCH WITH BRACELET, REF. 165022, SEAMASTER, COSMIC, CIRCA 1970.

Movement: cal. 552, automatic, 24 jewels.

Dial: blue, applied baton indexes, centre seconds.

Case: stainless steel, angled lugs, Tool-105, stainless steel bracelet.

Signed: case, dial, movement and bracelet.

Dimensions: length including lugs 35.5mm, width 33mm, bracelet circumference approximately 195mm.

£150–£200



448

GIRARD-PERREGAUX. THREE STAINLESS STEEL WRISTWATCHES, CIRCA 1970/80.

Movements: 1st: automatic; 2nd: manual; 3rd: manual.

Dials: 1st: silvered, apertures for day and date; 2nd: gilt; 3rd: silvered.

Cases: stainless steel.

Signed: cases, dials and movements.

Dimensions: 1st: 32.5mm; 2nd: 35mm; 3rd: 32.5mm.

Together with three unsigned stainless steel bracelets. (3)

£150–£200

449

CARTIER. A STAINLESS STEEL AUTOMATIC WRISTWATCH WITH DATE AND BRACELET, SANTOS, CIRCA 1980.

Movement: jewelled automatic.

Dial: white, Roman numerals, aperture for date, secret signature at VII, centre seconds.

Case: stainless steel, back secured by eight screws, screwed octagonal bezel, sapphire-set winding crown, no. 296501990, stainless steel bracelet with screwed links.

Signed: case, dial, movement and bracelet.

Dimensions: diameter 30mm, bracelet circumference approximately 175mm.

£600–£800



450

IWC. A STAINLESS STEEL AUTOMATIC SPLIT CHRONOGRAPH PILOT'S WATCH WITH DAY AND DATE, REF. 3713, DER DOPPELCHRONOGRAPH, CIRCA 1996.

Movement: cal. 79230, automatic, 29 jewels.

Dial: black, Arabic numerals, subsidiary dials for constant seconds, 30-minute and 12-hour registers, apertures for day and date.

Case: stainless steel, screw-down back, no. 2656407, stainless steel buckle.

Signed: case, dial, movement and buckle.

Dimensions: diameter 42mm.

£2,800–£3,800



The Doppelchronograph reference 3713 pilot's watch was produced between 1996 and 2005. It differs from its predecessor the reference 3711 in that it has a flat crystal instead of a domed one and SuperLuminova to the dial. However as you can see this example has still the tritium dial and is in fact one of the early transitional models.

451

CARTIER. A PINK GOLD CUSHION-FORM EXTRA-FLAT WRISTWATCH, REF. 3967, DRIVE DE CARTIER, CIRCA 2020.

Movement: cal.430 MC, manual winding.

Dial: silvered, Roman numerals, secret signature at 7 o'clock.

Case: 18ct pink gold, back secured by eight screws, sapphire-set winding crown, no. 22125YX, 18ct pink gold buckle.

Signed: case, dial, movement and buckle.

Dimensions: length 37.5mm, width 39mm.

Accessories: warranty card, instructions, presentation case and cleaning kit.

£4,000–£6,000



452

AUDEMARS PIGUET. A RARE STAINLESS STEEL AUTOMATIC WRISTWATCH WITH DATE AND MILITARY DIAL, REF. 14790ST, ROYAL OAK, NO. 597, CIRCA 1994.

Movement: cal. 2225, automatic, 36 jewels.

Dial: black, Arabic numerals, aperture for date, centre seconds.

Case: stainless steel, back and bezel secured by eight screws, no. D30341, stainless steel folding clasp.

Signed: case, dial, movement and clasp.

Dimensions: diameter 36mm.

£8,000–£12,000

Audemars Piguet launched their legendary Royal Oak model in 1972. They enlisted the help of the Swiss industrial designer Gerald Genta to create their first luxury steel sports watch. Its tonneau-shaped case with octagonal bezel, reminiscent of a ship's porthole was completely different from the traditional round timepieces of the time.

The reference 14790 was launched in 1992. Most Royal Oak models are fitted with the distinctive 'petite tapisserie' dial but a limited few came with the so-called military dial. With its black background, large luminous Arabic numerals and large arrow-tipped centre seconds hand this model is reminiscent of the military watches used by the armed forces. As the desire for military watches has grown ever more popular this Royal Oak with rare dial configuration has become highly sought after by collectors.



453

SWISS. A LADY'S GOLD AND DIAMOND-SET COCKTAIL WATCH, CIRCA 1919.

Movement: manual winding, 15 jewels.

Dial: silvered, Arabic numerals.

Case: 18ct gold, hinged back, diamond-set bezel, maker's mark W&T, London hallmark for 1919, later added 15ct expanding bracelet.

Signed: unsigned.

Dimensions: diameter 21mm.

£400-£600



454

TAVANNES. A LADY'S PLATINUM AND DIAMOND-SET COCKTAIL WATCH, CIRCA 1930.

Movement: cal. 354, manual winding, 15 jewels.

Dial: silvered, Arabic numerals.

Case: platinum, hinged back, diamond-set bezel and lugs, sapphire cabochon-set winding crown, later 14ct gold bracelet.

Signed: dial and movement.

Dimensions: length including lugs 54.5mm, width 11.5mm. £300-£500

455

TUDOR. A LADY'S GOLD BRACELET WATCH, CIRCA 1956.

Movement: cal. 2325, manual winding, 15 jewels.

Dial: silvered, applied baton indexes, subsidiary seconds.

Case: 9ct gold, snap-on back, fancy link bracelet, no. 306549.

Signed: dial and movement, case stamped B&S made for Rolex.

Dimensions: diameter 21.5mm, bracelet circumference approximately 165mm.

£150-£200



456

ROLEX. A LADY'S GOLD BRACELET WATCH, CIRCA 1960.

Movement: cal. 130, manual winding, 17 jewels.

Dial: silvered, applied Arabic and dagger indexes.

Case: 9ct gold, snap-on back, integral textured link bracelet, no. 12639, London hallmark for 1960.

Signed: dial, movement and bracelet, case and bracelet stamped D.S.& S.

Dimensions: diameter 20mm, bracelet circumference approximately 170mm.

Accessories: presentation case. £300-£500

457

UNIVERSAL / VAN CLEEF & ARPELS. A LADY'S RECTANGULAR WRISTWATCH, CIRCA 1960.

Movement: manual winding, 17 jewels.

Dial: black, Roman numerals.

Case: 18ct gold, snap-on back, T-bar lugs, no. 104668 04 230, 18ct gold buckle.

Signed: case and movement signed Universal, case and buckle stamped VCA for Van Cleef & Arpels.

Dimensions: length 21.5mm, width 17.5mm.

£300–£500



458

LE COULTRE. A LADY'S GOLD RECTANGULAR WRISTWATCH, CIRCA 1950.

Movement: cal. 490/BV, manual winding, 17 jewels, no. 909573.

Dial: silvered, applied faceted indexes.

Case: 14ct gold, snap-on back, no. 248, rectangular gold links, later gold plated clasp.

Signed: case, dial and movement.

Dimensions: length 18mm, width 14mm.

£200–£300

459

OMEGA. A LADY'S GOLD BRACELET WATCH, CIRCA 1966.

Movement: cal. 484, manual winding, 17 jewels, no. 23587729.

Dial: silvered, applied baton indexes.

Case: 9ct gold, snap-on back, integral textured bracelet, no. 7115658, London hallmark for 1966.

Signed: case, dial, movement and bracelet.

Dimensions: diameter 16.5mm, bracelet circumference approximately 160mm.

£200–£300



460

VACHERON CONSTANTIN. A SLIM GOLD BRACELET WATCH, REF. 6452, CIRCA 1960.

Movement: cal. 1003, manual winding, 17 jewels.

Dial: gilt, applied baton indexes.

Case: 18ct gold, snap-on back, milled bezel, no. 402611, integral bracelet, lasp stamped GF for Gay Frères.

Signed: case, dial, movement and bracelet.

Dimensions: diameter 32mm, bracelet circumference approximately 195mm.

£2,000–£3,000

461

MUST DE CARTIER. A GOLD PLATED RECTANGULAR WRISTWATCH, TANK, CIRCA 1980.

Movement: cal. 2512-1, manual winding, 17 jewels.

Dial: cream, Roman numerals, secret signature at VII.

Case: gold plated, back secured by four screws, sapphire cabochon-set winding crown, no. 6 143855, gold plated buckle.

Signed: case, dial and movement.

Dimensions: length 30mm, width 23mm.

£300-£400



462

JAEGER-LECOULTRE. A LADY'S WHITE GOLD AND DIAMOND-SET BRACELET WATCH LAPIS LAZULI DIAL, CIRCA 1970.

Movement: manual winding, 17 jewels.

Dial: lapis lazuli.

Case: 18ct white gold, snap-on back, diamond-set bezel, sapphire cabochon-set winding crown, no. 16314 22 1555028, integral textured bracelet.

Signed: case, dial, movement and bracelet.

Dimensions: length 20mm, width 17mm, bracelet circumference approximately 145mm.

£800-£1,200

463

CHOPARD. A LADY'S GOLD AND DIAMOND-SET RECTANGULAR BRACELET WATCH, REF. 5131, CIRCA 1980.

Movement: cal. 846, manual winding, 17 jewels.

Dial: gilt.

Case: 18ct gold, snap-on back, diamond-set bezel, no. 168345, integral rope twist bracelet.

Signed: case, dial, movement and bracelet.

Dimensions: length 24.5mm, width 18.5mm, bracelet circumference approximately 170mm.

£2,400-£3,000



464

GIRARD-PERREGAUX. A LADY'S GOLD RECTANGULAR BRACELET WATCH, CIRCA 1974.

Movement: cal. 633-357, manual winding, 17 jewels.

Dial: gilt, applied baton indexes.

Case: 18ct gold, snap-on back, integral textured link bracelet.

Signed: case, dial, movement and bracelet.

Dimensions: length 17.5mm, width 13.5mm, bracelet circumference approximately 160mm.

Accessories: certificate and presentation case.

£400-£600

465

CARTIER. A LADY'S GOLD AND DIAMOND-SET BRACELET WATCH, REF. 1710, TANK AMERICAINÉ, CIRCA 2000.

Movement: cal. 157, quartz, 4 jewels.

Dial: silvered, guilloché, Roman numerals, secret signature at X.

Case: 18ct gold, diamond-set bezel, back secured by four jewels, diamond-set winding crown, no. 336736 MG, 18ct gold bracelet with double deployant clasp.

Signed: case, dial, movement and bracelet.

Dimensions: length including lugs 34mm, width 19mm, bracelet circumference approximately 170mm.

£4,000–£6,000





466

GÉRALD GENTA / GRAFF. A LADY'S GOLD AND DIAMOND-SET OCTAGONAL WRISTWATCH, REF. 1907 7, CIRCA 1990.

Movement: cal. 21, manual winding, 17 jewels, no. 2699.

Dial: gilt, Roman numerals, pavé diamond-set centre.

Case: 18ct gold, snap-on back, diamond-set bezel, diamond-set winding crown, no. 16219, 18ct gold and diamond-set buckle.

Signed: dial signed Graff, case and movement signed Gérald Genta.

Dimensions: diameter 26mm.

£600–£800

467

PIAGET. A LADY'S GOLD AND DIAMOND-SET BRACELET WATCH, REF. 16033, TANAGRA, CIRCA 1999.

Movement: quartz.

Dial: mother-of-pearl, diamond-set indexes.

Case: 18ct gold, back secured four screws, diamond-set bezel, no. 615334, integral bracelet

Signed: case, dial, movement and bracelet.

Dimensions: diameter 25mm, bracelet circumference approximately 160mm.

Accessories: guarantee, wallet, instructions and presentation case. £3,000–£5,000



468

CHOPARD, RETAILED BY KUTCHINSKY. A LADY'S GOLD AND DIAMOND-SET OVAL BRACELET WATCH, REF. 5113, CIRCA 1980.

Movement: cal. 839, manual winding, 18 jewels.

Dial: gilt.

Case: 18ct gold, back secured by four screws, integral satin-finished bracelet.

Signed: case, dial, movement and bracelet.

Dimensions: length 26mm, width 23mm, bracelet circumference approximately 170mm.

£1,000–£1,500

SILVER & OBJECTS OF VERTU

LOT
No 479





469

A 9CT GOLD FOUNTAIN PEN BY PARKER, engine turned and with hooded knib, 'continuous feed' model, initialled 'V A R' and dated '25. 12. 80', London 1974, cased, with original instruction leaflet, length 13cm. £400-£600



470

A 9CT GOLD PROPELLING PENCIL BY PARKER, engine-turned decoration, initialled 'G P R' and dated '3 6 81', Sheffield 1979, cased, length 13cm. £100-£200



471

A 9CT GOLD FOUNTAIN PEN, BY PARKER, engine-turned and with hooded knib, cartridge reservoir, engraved with initials 'G P R' and dated '3. 6. 79', London 1975, cased, length 13.5cm. £400-£600



472

A GOLD PROPELLING PENCIL BY SAMPSON MORDAN & CO., with engine-turned decoration, signed to the shaft 'S. Mordan & Co', length extended 11.5cm. £100–£150

According to a PMI test on the XRF Analyzer, the pencil is testing as 9ct gold.



473

A VICTORIAN SILVER POSTAL SCALE, the weighted cylindrical base supporting a square section column calibrated with pence per ounce for foreign letters, having an adjustable collar and a tweezer action letter holder suspended from a loop by HENRY WILLIAMS DEE, London 1868, the base engraved with the retailer Rodrigues, 42 Piccadilly, cased, height (excluding tweezers) 11.5cm. £180–£220

474

A NOVELTY PROPELLING PENCIL FOB BY SAMPSON MORDAN & CO., the retractable pencil realistically modelled as an owl, with textured feathers and glass eyes, signed 'S. Mordan & Co.', length of owl 32.5mm. £80–£100



475

A VICTORIAN SILVER HUNTING HORN VINAIGRETTE/PERFUME FLASK, BY SAMPSON MORDAN & CO., the horn with hinged cover opening to reveal a pierced silver gilt grille, the inside bearing lozenge Registry mark (Registered Class 1, 21 December 1870, parcel no. 10), maker's mark, signed 'S Mordan & Co London', the opposing end with twist off cap and chain, hallmarked for London, 1873, on chain suspension with ring bolt clasp, length 7.7cm. £200–£300



476

A 9CT GOLD PILL BOX BY CARTIER, 1945, of circular form, the vertically reeded base with pull off cover and D-shaped hinged handle, maker's mark 'JC', London hallmark, *diameter 31mm.* £800–£1,000



477

A MID 20TH CENTURY COMPACT, of rectangular form with rounded corners and of bicolour basket weave design, with a calibré-cut ruby thumbpiece, opening to reveal a white metal lined powder compartment and mirror, stamped '750, with leather pouch, *dimensions 7.5 x 6.1cm.* £4,000–£5,000



478

A NEPHRITE JADE AND GOLD MOUNTED CIGARETTE CASE AND MATCHING VESTA CASE, both of rectangular form with rounded corners, edged with tricolour gold flower and foliate borders, against a pink enamel ground, each with blue cabochon thumbpiece, unmarked, *lengths 8.4 and 5.5cm.* £2,000–£3,000



479

A PAIR OF SWISS GOLD AND ENAMEL BOXES, POSSIBLY GENEVA, CIRCA 1800, of squat cylindrical form, decorated in translucent blue enamels against an engine-turned ground, the hinged lids similarly enamelled, with white enamel stringing edged within a half pearl border, unmarked, contained in fitted grained red leather case, the cover with presentation inscription 'Golden Wedding A.F. = E.L. 1868 June 25th 1918', dimensions: height 22.5 x diameter 25mm. £1,800–£2,200

480

AN ITALIAN GOLD SNUFF BOX, of oval form, the hinged lid inset with a glazed painted scene of Cupid and Venus, the goddess of Love, edged with rose-cut diamonds, within an engraved flowerhead and foliate surround, the sides with repeating husk and foliate borders, signed to the interior 'CONFALONIERI', length 6.3cm £1,500–£1,800

According to a PMI test on the XRF analyzer the box is testing as 17 carat



481

A RUSSIAN GOLD CIGARETTE CASE, rectangular with rounded corners, with flared and diagonal ribbed decoration throughout, ruby cabochon thumbpiece, marked inside to the cover and base with 'AH' possibly for Fabergé workmaster August Holmström, St Petersburg, 1891, 56 standard, dimensions 88 x 57mm. £3,000–£4,000



482

A SET OF EIGHT SILVER BUTTONS BY THOMAS WHITE, 1901, of pierced foliate design, maker's mark, London hallmark, diameter 30mm. £100–£200



483

AN 18CT GOLD FOB BY KURT WEISS FOR CARTIER, the tricolour panel on ring suspension with chain and T-bar, hallmarked for London 1976, signed 'Cartier', numbered '0156', and a 'C de Cartier' stainless steel and gold plated money clip, numbered '32703', signed 'Must de Cartier', lengths 12cm and 3.5cm. £700–£900



484

A VICTORIA SILVER CYLINDRICAL BOX AND COVER, repoussé decorated throughout with arabesque scrolls and foliage, parcel gilt interior, initialled, maker's mark partially rubbed, probably H. Matthews, Birmingham 1897, height 8.5cm. £70–£90





485

AN AMETHYST CRYSTAL SET SILVER CYLINDRICAL BOX, 1983, the pull off cover mounted with amethyst crystals, with engraved cascading decoration below, by Alison Jean Muirhead Clark, London hallmark, the box lined to the interior, height 8.2cm. £100–£200



486

A BICOLOURED LIGHTER, with weave textured surface, stamped '750', height 5.9cm. £200–£300



487

A DIAMOND-SET LIGHTER BY CARTIER, with ribbed oval ends and horizontally ruled sides inset alternately with pairs of brilliant-cut diamonds, stamped '750', signed 'Cartier Paris', 'Made in Italy', numbered '22124', height 7cm. £1,500–£2,000



488

A FRENCH RENAISSANCE REVIVAL SILVER AND GEM SET BOX, LATE 19TH CENTURY, of kidney shape, the hinged lid chased with masks, the sides with scrolling foliage, against a matt ground, set with cabochon emeralds and opals, lozenge maker's mark possibly 'E L', and French assay marks, length 63mm. £400-£600



489

AN ARTS AND CRAFTS SILVER BOX, BY GEORGE LAURENCE CONNELL, of shaped trapezoid form, the hinged lid embossed with four flowerheads, and the words:

'GATHER YE ROSES WHILE YE MAY
OLD TIME IS STILL A-FLYING'

the lid with laurel border, the front with engraved inscription 'C. E. 10th July 1909', the base engraved 'Connell. 83 Cheapside, London', maker's mark for George Laurence Connell, hallmarked for Birmingham 1908, length 12.2cm. £150-£200

The wording quoted on the box is taken from the first two lines of a poem by the 17th century English poet Robert Herrick: 'To the Virgins, to Make Much of Time', written in 1648.



490

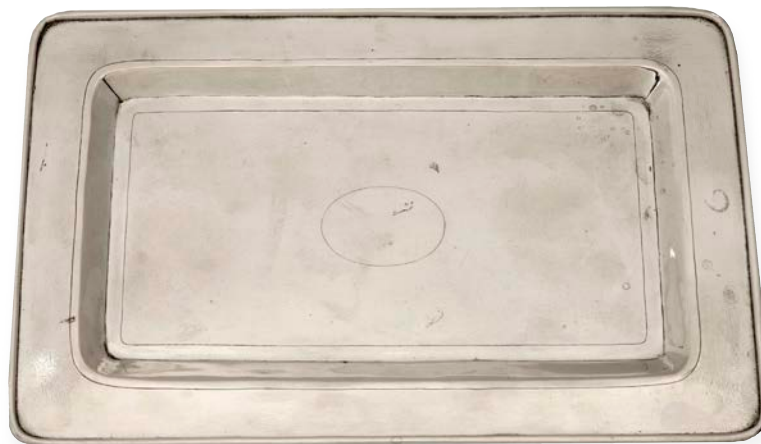
A MEXICAN SILVER BOX, with detachable cover and textured bark finish, stamped 'sterling', import marks for 1965, dimensions 7 x 10cm. £70-£90



491

A LATE 19TH CENTURY CHINESE EXPORT SILVER BOX, the hinged lid relief decorated with a dignitary seated in a garden pavilion, fanned by servants and with attendant court figures, the sides with dragons and bamboo, the upper border of the lid with presentation inscription, retailed by Wang Hing, both lid and base with import marks for George Edward & Son, Glasgow 1896, dimensions 10 x 20 x 7.5cm.

£300–£500



492

A CHINESE EXPORT SILVER TRAY, CIRCA 1910, of rectangular panelled form, stipple decorated, on flattened bun feet, stamped marks for Tuck Chang of Shanghai, dimensions 24.9 x 16cm.

£200–£300

Tuck Chang & Co. Ltd of Shanghai were active between 1890–1915.



493

A CHINESE EXPORT SILVER THREE PIECE TEA SERVICE BY KWAN WO, comprising tea pot, cream jug and twin-handled sugar basin and cover, the tapered cylindrical bodies decorated with embossed hexagonal panels of figural scenes, spaced by panels of bamboo, prunus blossom and peonies, against a textured ground, each with vacant shield-shaped reserve, with bamboo-style scroll handles and finials, maker's mark 'KW', with workshop/artisan mark, tea pot height 14cm.

£600–£800

Kwan Wo of Canton and Hong Kong was active circa 1875–1940.

All lots are subject to extra charges which may be viewed in Ts and Cs 3, 4, 5 and 10 at the back of this catalogue.



494

A 19TH CENTURY PRESSED HORN SNUFF BOX, of rectangular form, the lid titled 'Palais de la reine dans le parc St James', length 9.6cm. £50-£70

Buckingham House, St James Park, London, was built for John Sheffield, 1st Duke of Buckingham and Normandy, in 1703. It was acquired by King George III in 1762 as a private residence for his wife Queen Charlotte, thereafter known as The Queen's House. Alterations and additions to the house were carried out by Sir William Chambers between 1762 and 1774. It was further enlarged after 1819 by John Nash and Edward Blore. Buckingham Palace finally became the official royal residence of the British Monarch on the accession of Queen Victoria in 1837.



495

A NEW ZEALAND GREENSTONE HAND CLUB/PATU (MERE POUNAMU), of flat teardrop-shape, with drilled suspension hole, length 10.4cm. £100-£200

The patu, a teardrop-shaped hand club was used by the Maori warriors for close combat fighting. When not in use, the patu were often worn suspended from the wrist or thrust into a belt. The most prized examples called 'mere pounamu' were made from greenstone (pounamu), a type of jade. Pounamu is regarded as a stone sacred to the gods by the Maori of New Zealand.

For a similar example at The Met, New York, see Accession number: 1979.206.1459.



496

A LAPIS LAZULI SNUFF BOTTLE, carved in high relief with a prancing horse, with a replacement malachite stopper, height 5cm. £150-£200



497

A GEORGE III GRANT OF ARMS, WITH A CONTEMPORARY CARNELIAN FOB SEAL BEARING SIMILAR ARMS, granting George Potter of Pole, Cheshire, the right to bear the arms and name of Eaton, on vellum, signed by Isaac Heard, Garter Principal King of Arms and by George Harrison, Norroy King of Arms, 1789, with two seals appended, each in japanned skippet, in red leather covered fitted box stamped with repeating crowned royal cyphers, the gilt metal mounted fob seal with accompanying boxed wax impression. (3) £300-£400





498

A VICTORIA SILVER LARGE GOBLET, the body engraved with laurel swags beneath a border of lunettes, on knopped stem, the foot also engraved with a band of lunettes, by Messrs. Henry and John Lias, London 1874, height 24cm. £200–£300



499

A GEORGE V SILVER SUGAR BASKET with bead-edge wavy rim, vertical piercing and loop handle, by George Nathan & Nathan & Hayes, Chester 1912, with blue glass liner, (repair to foot), height 12cm. £80–£100

500

TWO SILVER SUGAR BASINS, the first, Edward VII, of circular design, with pierce-decorated flange rim, on tall, braced legs and pointed pad feet, Sheffield 1907, the second, Victoria, circular, on pedestal foot, repoussé decorated with C-scrolls, fan-shaped lobing and scallop motifs, by William Hutton & Sons, London 1898, first height 10.5cm, diameter 14cm, second: diameter 16cm. £120–£150



501

A VICTORIA SILVER CAKE BASKET, repoussé decorated with alternating flowerheads, fruit and conforming C-scrolls, with swing handles, on scroll feet, by Robert Harper, London 1859, diameter 27cm. £360–£400,

£360–£400,



502

A GEORGE III SILVER MUFFINEER, of inverted pear-shape by Jabez Daniell & James Mince, London 1770, and another similar by Peter & Ann Bateman, London 1798, with associated top, both height 14.5cm. (2) £150-£200



503

A GEORGE III SILVER WAITER, with reeded rim, on ribbed feet, centred with an engraved coat of arms, by Peter & Ann Bateman, London 1791, diameter 18cm. £100-150



504

A MATCHED PAIR OF EDWARD VII SILVER MOUNTED CUT-GLASS CLARET JUGS, the spouts and lids of plain design, with angular handles, by John Grinsell & Sons, London 1906 and Goldsmiths & Silversmiths Co. Ltd, 1908, height 20cm. £200-£300



505

A SILVER BACHELOR'S TEA SET, BY MAPPIN & WEBB, comprising small teapot, sugar bowl and milk jug, of globular design, the tea pot with turned wood handle and finial, hallmarked for London 1926, all signed 'MAPPIN & WEBB LONDON', and initialled 'N', together with a silver oil table lamp by Adie Bros Ltd, engraved with date, Birmingham 1923, tea pot height 13cm.

£120-£150



506

A GEORGE III SILVER CREAM JUG, with a band of bright-cut stylised leaf and flowerhead decoration, crested within a laurel wreath, London 1806, height 10cm.

£80-£120



507

AN EDWARD VII SILVER TRAY, rectangular with shaped twin handles, with pierced scrollwork gallery, raised on foliate scroll feet, maker's mark indistinct, Birmingham 1902, length 44cm.

£500-£600

508

AN EDWARD VII SILVER LIGHTHOUSE CASTER, the body pierced decorated with interlaced roundels, maker's marks rubbed, London 1903, with blue glass liner, height 23cm.

£150-£200



509

A VICTORIA SILVER CREAM JUG, repoussé decorated in high relief with trailing flowers, with S-scroll handle, on voluted feet, crested, maker's mark 'R H' (probably for Robert Hennell), London 1855, height 15.5cm.

£80-£120



510

A MATCHED IRISH THREE PIECE TEA SERVICE IN MID 18TH CENTURY STYLE, ornately repoussé; decorated with flowerheads and foliage, the handles cast as terminal figures, the teapot lid with flower finial, each piece with two reserves (one crested), on claw and ball feet, the cream jug with maker's marks for both Edward Twycross & Edward Power, Dublin 1826, the teapot and sugar basin by West & Son, Dublin 1897, teapot height 16cm.

£600-£800

511

A PAIR OF DEER HOOF CANDLESTICKS, truncated at the hock, the electro-plated mounts with double scroll supports and shaped oval bases with moulded edges, height 32cm. £300-£500



512

A PAIR OF SILVER TABLE ORNAMENTS OF A COCK AND HEN PHEASANT, realistically modelled, by C J Vander & Sons, Sheffield 1994, both lengths 28cm.

£1,600-£2,000

513

A SILVER MODEL OF AN OTTER, realistically modelled, by William Comyns Ltd, London 1967, and a silver plated model of a retriever, first length 13cm, second length 7cm. (2) £200–£300



514

A LATE 19TH/EARLY 20TH CENTURY SILVER GROUSE DECANTER/ TABLE ORNAMENT, realistically modelled with chased feathers, with detachable head and hinged wings, import marks for BERTHOLD MULLER, London 1902, height 17.5cm. £600–£800

Berthold Muller & Son was an import firm, listed in 1894 as a manufacturers' agent operating from 165 Wardour Street, Soho, London. They subsequently moved to 187 Wardour Street in 1895. It appears that there were three generations of the family involved in the firm from the late nineteenth century into the early twentieth century. In 1915 Muller anglicised his name to Miller, and became B. Miller & Son, carrying on business as a wholesale silversmiths and jewellers, antique reproduction in silver, ivories, miniatures and enamels.

Literature:

John Culme: *The Directory of Gold and Silversmiths, Jewellers and Allied Traders 1838-1914*, Vol 1, page 335.



515

A MATCHED PAIR OF SILVER ORNAMENTS, A COCK AND HEN PHEASANTS, realistically modelled, the cock bird by Edward Barnard & Sons Ltd, London 1967, the hen with London import mark 'I F & Son Ltd', London 1964, first length 24cm, second 22cm. £800–£1,000



516

A SILVER FLATWARE SERVICE OF ELIZABETHAN PATTERN BY GARRARD & CO. LTD.,

comprising:

12 table forks, 11 table spoons, 24 dessert forks, 12 dessert spoons,
12 table knives, 24 dessert knives, 12 fruit forks, 12 fruit knives, 12 teaspoons,
two-piece carving set x 2, a pair of fish servers, two sauce ladles, one basting spoon, one butter knife

Hallmarked for London 1911, contained in baize-lined four drawer fitted oak cabinet. £4,000-£6,000







517

SCOTTISH PROVINCIAL SILVER: A PAIR OF EARLY 19TH CENTURY FIDDLE PATTERN SAUCE LADLES BY ROBERT KEAY I, PERTH, both engraved with initials 'P Mc L', length approximately 16.5cm. £100–£150

The silversmith Robert Keay I was active in Perth between 1791-1825. His son Robert Keay II, also a silversmith, was active between 1839-1856, both flatware and spoon makers.



518

A PAIR OF SCOTTISH WILLIAM IV SILVER FIDDLE PATTERN SAUCE LADLES, by maker 'J. G & Co' (probably John Graham & Co), Edinburgh 1837, maker's marks overstruck, crested, lengths approximately 15cm. £60–£80



519

A CHARLES II SILVER MOUNTED WOODEN HANDLED TOASTING FORK, the spherical terminal with suspension ring, with long wooden shaft, maker's mark 'DL', a trefoil above and a mullet below, struck twice, once on each mount, with triform tines, London circa 1670, length 94cm. £800–£1,200

Jackson's Revised Edition lists a 'long toasting fork' for this maker dated 1672, see page 131.



520

A MID 18TH CENTURY SILVER MOTE SPOON, of typical form, the base of the bowl scratch-initialled 'M', no date letter, maker's mark indistinct, length 14cm.

£80-£100



521

A PAIR OF VICTORIA SILVER FISH SERVERS, with pierced scrolling foliate decorated blade, by maker 'J.G', probably John Gilbert, Birmingham 1850, crested, knife length 33.5cm.

£80-£100



522

A SET OF SIX RUSSIAN (SOVIET ERA) SILVER GILT TEASPOONS, POST 1958, each handle applied with wirework and enamel flowering tendrils, '875' standard, length 14cm.

£60-£80





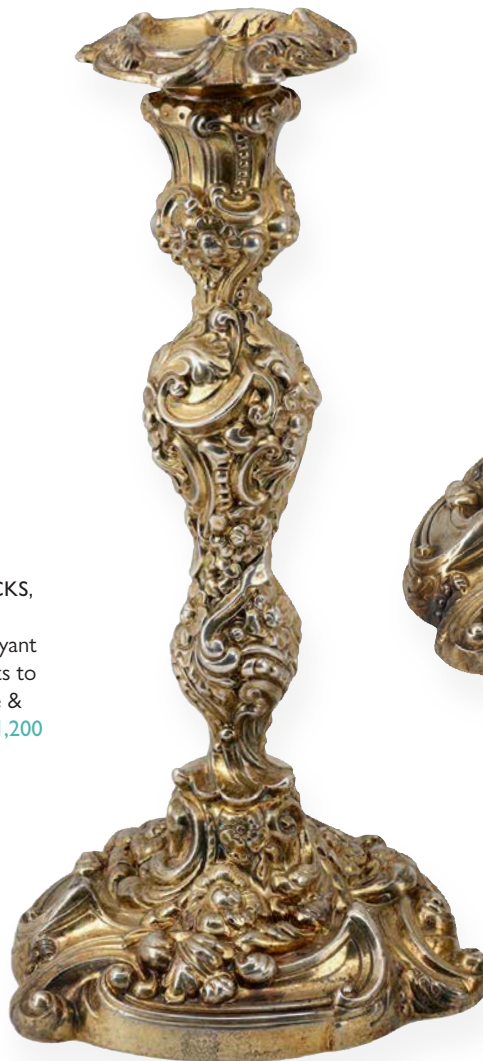
523

A PAIR OF GEORGE III SILVER CANDLESTICKS, with plain stems and with vertical bands of ribbing to the circular bases, crested, by John Green & Co., Sheffield 1800, filled, height 17cm. £800–£1,000



524

A PAIR OF WILLIAM IV SILVER GILT CANDLESTICKS, of ornate design, with knopped stems leading to spreading bases, embossed throughout with flamboyant swirling scrolls, flowers and foliage, lion's mask crests to the foot and drip pans, by James Kirby, Waterhouse & Co, Sheffield 1833, height 28cm. £800–£1,200



525

A SET OF 12 SILVER SPORTING BEAKERS, the tapered stacking beakers each engraved with a game bird or animal, individually numbered 1 to 12 to the inside base, maker's mark 'M H', Sheffield 1988, contained in cylindrical black leather travelling case initialled 'CMW', beaker height 8cm. £1,200–£1,500



526

A GEORGE III SILVER PINT MUG, INSET WITH COINS FROM THE JACOBEAN SILVER HOARD FOUND IN DEIGHTON IN 1847, the mug decorated with two bands of reeding, the sides inset with three shillings and three sixpences of Elizabeth and James I, inscribed to the rim and base:

'COINS FOUND ON THE FARM OCCUPIED BY MR. JOHN RICHARDSON AT DEIGHTON,/ AND PRESENTED TO HIM BY HIS LANDLORD LORD WENLOCK. AUGUST 1847',

maker's mark IW, London circa 1820, together with a VICTORIA SILVER WAITER, centred with engraved initials 'IEH' enclosed within a circular foliate engraved and beaded border and mounted with sixteen Elizabeth and James I shillings, inscribed to the underside:

'THIS WAITER WEIGHING 17OZ 14DWTS WAS MADE TO RECEIVE 16 OLD COINS OF UNKNOWN ASSAY',

the waiter raised on three claw feet, by Samuel Roberts & Charles Beck, Sheffield 1869, mug height 10.1cm, waiter diameter 25cm, both contained in later fitted presentation case.

£1,200–£1,400



Provenance: The original hoard was found by workmen digging a new foundation at Deighton, four miles from York, and comprised 348 coins as follows: 42 Mary groats; 18 Philip and Mary groats; Elizabeth I, shillings 55; sixpences 134; groats 24; James I shillings 49; sixpences 26. The latest coin dated to 1613. The Yorkshire Museum received 57 coins, with the rest of the hoard being melted down.

Ex Sworders, 20 May 2014, lot 158.

The silver mug has inset James I shillings: obverse 4th bust mm Rose; reverse mm lis. Sixpences: reverse 1604 mm Lis; reverse 1603, mm Rose;

Elizabeth I shilling: obverse mm Bell; sixpence 1567 mm Coronet.

The silver waiter is mounted with James I shillings: obverse 3rd bust mm Rose (3); 4th bust mm Rose; 5th bust mm Key (2);

Elizabeth I shillings: obverse mm Woolpack (2) mm Tun (2); mm Key; mm Scallop; mm Martlet; mm 2; mm not visible (2).

End of Sale

INDEX OF MAKERS

ADLER	252	LE CHIC	142
ASPREY	279	LEONIDAS	413
AUDEMARS PIQUET	452	RENEE LEWIS	306
SOLANGE AZAGURY-PARTIDGE	101	FEI LIU	130, 191
PETER & ANN BATEMAN	503	MARINA B	342
BAUME & MERCIER	420	SAMPSON MORDAN & CO.	472, 474–475
BUECHE-GIROD	418	MIKIMOTO	193
BOUCHERON	283, 285	NAOHIKO NOGUCHI	101
BREMONT	408–409	OMEGA	407, 410, 415, 417, 419, 421, 425–426, 429, 432, 433, 443, 445, 447, 459
PASQUALE BRUNI	160, 163	PARKER	469–471
BUCCELLATI	344	PIAGET	467
BULGARI	345	JOSH PENLINGTON	390
BULOVA	400	RACINE	393
CARTIER	220, 311, 317, 341, 358, 424, 449, 451, 461, 465, 476, 483, 487	ROLEX	434, 436, 438–440, 456,
CHOPARD	359, 463, 468	THOMAS RUSSELL & SON	395
DAW	389	PIPPA SMALL	108
HENRY WILLIAMS DEE	473	H. STERN	126
D. HUMBERT DROZ	391	TAG HEUER	435
ALBERTO FELICIO	138	THEO FENNELL	309–310, 313
FRODSHAM & BAKER	388	TIFFANY & CO.	95, 277
ALAN MARTIN GARD	107	TUDOR	404–406, 437, 455,
GARRARD & CO. LTD	516	ULYSSE NARDIN	446
GIRARD-PERREGAUX	403, 427, 448, 464	UNIVERSAL/VAN CLEEF & ARPELS	457
JOHN GREEN & CO.	523	VACHERON CONSTANTIN	460
GRAFF	328, 361, 466	VERDURA	128
GRUEN	430	VOURAKIS	33, 123, 171, 246
HALBERSTADT	337	WALTHAM	396–397
INTERNATIONAL WATCH CO.	399, 401, 422, 450	ZENITH	428, 431
JAEGER-LECOULTRE	398, 411, 416, 458, 462	ZOUGHAIB	211
GEORG JENSEN	100, 441		
ROBERT KEAY I,	517		
KIRBY, WATERHOUSE CO.	524		
KWAN WO	493		
LALAOUNIS	168–170		

DIAMONDS

DIAMONDS ARE ASSESSED ACCORDING TO THE FOUR C'S

1. CARAT WEIGHT

1 Carat equals 0.2 Grams.

2. CUT

The quality of a cut is assessed in terms of its proportions, symmetry & polish.

3. COLOUR

Unless regarded as a 'fancy' coloured diamond, all diamonds are graded on their lack of colour.

4. CLARITY

Diamonds are graded on their freedom from inclusions (within the stone) & blemishes (found on the surface of the stone). They are assessed using 10x magnification.

Please note the four cs of a diamond cannot be fully assessed whilst the stone is mounted. The approximate gradings provided in the condition reports are estimations, made by the specialists whilst the stones were mounted & are for guidance only. If a stone has been unmounted & assessed in a gemmological laboratory, this will be noted in the cataloguing/condition report.

COLOUR GRADES

GIA	CIBJO	TRADITIONAL
D	Exceptional White + (EW+)	Finest White
E	Exceptional White (EW)	Finest White
F	Rare White + (RW+)	Fine White
G	Rare White (RW)	Fine White
H	White (W)	White
I	Slightly Tinted White (STW)	Commercial White
J	Slightly Tinted White (STW)	Top Silver Cape
K	Tinted White (TW)	Top Silver Cape
L	Tinted White (TW)	Silver Cape
M-Z	Tinted Colour (TC)	Cape
Fancy	Fancy Colour	

CLARITY GRADES

GIA	CIBJO	DESCRIPTION
Flawless (FL)	Loupe Clean (LC)	Shows no inclusions or blemishes
Internally Flawless (IF)	Loupe Clean (LC)	Shows no inclusions & only insignificant blemishes
Very Very Slightly Included (VVS1/2)	Very Very Slightly Included (VVS1-2)	Contains minute inclusions which are very difficult for an experienced grader to see with 10x magnification
Very Slightly Included (VS1-2)	Very Slightly Included (VS1-2)	Contains very small inclusions that are difficult to see with 10x magnification
Slightly Included (SI1-2)	Slightly Included (SI1-2)	Contains inclusions that are easily visible with 10x magnification
Imperfect/Included (I1-3)	Pique (P1-3)	Contains inclusions that are obvious with 10x magnification & can often be seen with the naked eye; durability may be affected



COMMISSION FORM

JEWELLERY, WATCHES, SILVER & OBJECTS OF VERTU
11 JUNE 2024

Please bid on my behalf at the above sale for the following Lot(s) up to the price(s) mentioned overleaf. These bids are to be executed as cheaply as is permitted by other bids or any reserve.

I understand that in the case of a successful bid, a premium of 24 per cent (plus VAT if delivered or collected within the UK) will be payable by me on the hammer price of all lots.

Please see the Terms and Conditions of Business for any other charges which may be applicable.

Please ensure your bids comply with the steps outlined below:

- Up to £100 by £5
- £100 to £200 by £10
- £200 to £500 by £20
- £500 to £1,000 by £50
- £1,000 to £2,000 by £100
- £2,000 to £5,000 by £200
- £5,000 to £10,000 by £500
- £10,000 to £20,000 by £1,000
- £20,000 to £50,000 by £2,000

Bids of unusual amounts will be rounded down to the bid step below and will not take precedence over a similar bid unless received first.

NOTE:

All bids placed other than via our website should be received by 4 PM on the day prior to the sale. Although we will endeavour to execute any late bids, Noonans cannot accept responsibility for bids received after that time. It is strongly advised that you use our online Advance Bidding Facility. If you have a valid email address bids may be entered, and amended or cancelled, online at www.noonans.co.uk right up until a lot is offered. You will receive a confirmatory email for all bids and amendments, Bids posted to our office using this form will be entered by our staff using the same Advance Bidding Facility. **There is, therefore, no better way of ensuring the accuracy of your advance bids than to place them yourself online.**

I confirm that I have read and agree to abide by the Terms and Conditions of Business in the catalogue.

SIGNED

NAME (block capitals)

CLIENT CODE

ADDRESS

TELEPHONE

EMAIL

If successful, payment can be made in the following ways:

Credit/Debit card online via www.noonans.co.uk

Bank Transfer

Bankers: Lloyds; Piccadilly, London; Sort code: 30-96-64; Account No.: 00622865;
Swift Code: LOYDGB2L; IBAN: GB70LOYD30966400622865; BIC: LOYDGB21085

Cheque payable to Noonans

Cash up to a maximum of £5,000

All payments to be made in pounds sterling.

Please note payment is due within five working days of the end of the auction.

YOUR BIDS MAY BE PLACED OVERLEAF

CONDITIONS MAINLY CONCERNING BUYERS

1 The buyer

The highest bidder shall be the buyer at the 'hammer price' and any dispute shall be settled at the auctioneer's absolute discretion. Every bidder shall be deemed to act as principal unless there is in force a written acknowledgement by Noonans Mayfair Ltd. ("Noonans") that he acts as agent on behalf of a named principal. Bids will be executed in the order that they are received.

2 Minimum increment

The auctioneer shall have the right to refuse any bid which does not conform to Noonans' published bidding increments which may be found at noonans.co.uk and in the bidding form included with the auction catalogue.

3 The premium

The buyer shall pay to Noonans a premium of 24% on the 'hammer price' and agrees that Noonans, when acting as agent for the seller, may also receive commission from the seller in accordance with Condition 16.

4 Value Added Tax (VAT)

The buyers' premium is subject to the current rate of Value Added Tax if the lot is delivered to or collected by the purchaser within the UK.

Lots marked 'X' are subject to importation VAT of 5% on the hammer price unless re-exported outside the UK, as per the conditions below.

Buyers who wish to hand carry their lots to export them from the UK will be charged VAT at the prevailing rate and importation VAT (where applicable) and will not be able to claim a VAT refund.

Buyers will only be able to secure a VAT free invoice and/or VAT refund if the goods are exported by Noonans or a pre-approved commercial shipper. Where the buyer instructs a pre-approved commercial shipper, proof of correct export out of the UK must be provided to Noonans by the buyer within 30 days of export and no later than 90 days from the date of the sale. Refunds are subject to a £50 administrative fee.

Lots marked '††' are subject to the Standard Rate of VAT, currently 20%, on both the hammer price and buyers' premium.

VAT can only be removed from the hammer price, if goods are exported by Noonans or a pre-approved commercial shipper as per above.

All lots will be subject to VAT on the buyers' premium regardless of whether the lot is exported.

5. Artist's Resale Rights (Droit de Suite)

Lots marked ARR in the catalogue indicate lots that may be subject to this royalty payment.

The royalty will be charged to the buyer on the 'hammer price' and is in addition to the buyers' premium. Royalties are charged on a sliding percentage scale as shown below but do not apply to lots where the hammer price is less than 1000 pounds sterling. All royalty charges are paid in full to The Design and Artists Copyright Society (DACS).

Portion of the hammer price	Royalties
From 0 to £50,000	4%
From £50,000.01 to £200,000	3%
From £200,000.01 to £350,000	1%
From £350,000.01 to £500,000	0.5%
Exceeding £500,000	0.25%

VAT does not apply to the Artist's Resale Rights.

6 Payment

When a lot is sold the buyer shall:

- (a) confirm to Noonans his or her name and address and, if so requested, give proof of identity; and
- (b) pay to Noonans the 'total amount due' in pounds sterling within five working days of the end of the sale (unless credit terms have been agreed with Noonans before the auction). Please note that we will not accept cash payments in excess of £5,000 (five thousand pounds) in settlement for purchases made at any one auction.

7 Noonans may, at its absolute discretion, agree credit terms with the buyer before an auction under which the buyer will be entitled to take possession of lots purchased up to an agreed amount in value in advance of payment by a determined future date of the 'total amount due'.

8 Any payments by a buyer to Noonans may be applied by Noonans towards any sums owing from that buyer to Noonans on any account whatever, without regard to any directions of the buyer, his or her agent, whether expressed or implied.

9 Collection of purchases

The ownership of the lot(s) purchased shall not pass to the buyer until he or she has made payment in full to Noonans of the 'total amount due' in pounds sterling.

10 (a) The buyer shall at his or her own expense take away the lot(s) purchased not later than 5 working days after the day of the auction but (unless credit terms have been agreed in accordance with Condition 7) not before payment to Noonans of the 'total amount due'.

(b) The buyer shall be responsible for any removal, storage and insurance charges on any lot not taken away within 5 working days after the day of the auction.

(c) The packing and handling of purchased lots by Noonans staff is undertaken solely as a courtesy to clients and, in the case of fragile articles, will be undertaken only at Noonans' discretion. In no event will Noonans be liable for damage to glass or frames, regardless of the cause. Bulky lots or sharp implements, etc., may not be suitable for in-house shipping.

11 Buyers' responsibilities for lots purchased

The buyer will be responsible for loss or damage to lots purchased from the time of collection or the expiry of 5 working days after the day of the auction, whichever is the sooner. Neither Noonans nor its servants or agents shall thereafter be responsible for any loss or damage of any kind, whether caused by negligence or otherwise, while any lot is in its custody or under its control.

Loss and damage warranty cover at the rate of 1.5% will be applied to any lots despatched by Noonans to destinations outside the UK, unless specifically instructed otherwise by the consignee.

12 Remedies for non-payment or failure to collect purchase

If any lot is not paid for in full and taken away in accordance with Conditions 6 and 10, or if there is any other breach of either of those Conditions, Noonans as agent of the seller shall, at its absolute discretion and without prejudice to any other rights it may have, be entitled to exercise one or

more of the following rights and remedies:

- (a) to proceed against the buyer for damages for breach of contract.
- (b) to rescind the sale of that or any other lots sold to the defaulting buyer at the same or any other auction.
- (c) to re-sell the lot or cause it to be re-sold by public auction or private sale and the defaulting buyer shall pay to Noonans any resulting deficiency in the 'total amount due' (after deduction of any part payment and addition of re-sale costs) and any surplus shall belong to the seller.
- (d) to remove, store and insure the lot at the expense of the defaulting buyer and, in the case of storage, either at Noonans' premises or elsewhere.
- (e) to charge interest at a rate not exceeding 2 percent per month on the 'total amount due' to the extent it remains unpaid for more than 5 working days after the day of the auction.
- (f) to retain that or any other lot sold to the same buyer at the sale or any other auction and release it only after payment of the 'total amount due'.
- (g) to reject or ignore any bids made by or on behalf of the defaulting buyer at any future auctions or obtaining a deposit before accepting any bids in future.
- (h) to apply any proceeds of sale then due or at any time thereafter becoming due to the defaulting buyer towards settlement of the 'total amount due' and to exercise a lien on any property of the defaulting buyer which is in Noonans' possession for any purpose.

13 Liability of Noonans and sellers

(a) Goods auctioned are usually of some age. All goods are sold with all faults and imperfections and errors of description. Illustrations in catalogues are for identification only. Buyers should satisfy themselves prior to the sale as to the condition of each lot and should exercise and rely on their own judgement as to whether the lot accords with its description. Subject to the obligations accepted by Noonans under this Condition, none of the seller, Noonans, its servants or agents is responsible for errors of descriptions or for the genuineness or authenticity of any lot. No warranty whatever is given by Noonans, its servants or agents, or any seller to any buyer in respect of any lot and any express or implied conditions or warranties are hereby excluded.

(b) Any lot which proves to be a 'deliberate forgery' may be returned by the buyer to Noonans within 15 days of the date of the auction in the same condition in which it was at the time of the auction, accompanied by a statement of defects, the number of the lot, and the date of the auction at which it was purchased. If Noonans is satisfied that the item is a 'deliberate forgery' and that the buyer has and is able to transfer a good and marketable title to the lot free from any third party claims, the sale will be set aside and any amount paid in respect of the lot will be refunded, provided that the buyer shall have no rights under this Condition if:

- (i) the description in the catalogue at the date of the sale was in accordance with the then generally accepted opinion of scholars and experts or fairly indicated that there was a conflict of such opinion; or
- (ii) the only method of establishing at the date of publication of the catalogue that the lot was a

'deliberate forgery' was by means of scientific processes not generally accepted for use until after publication of the catalogue or a process which was unreasonably expensive or impractical.

(c) A buyer's claim under this Condition shall be limited to any amount paid in respect of the lot and shall not extend to any loss or damage suffered or expense incurred by him or her.

(d) The benefit of the Condition shall not be assignable and shall rest solely and exclusively in the buyer who, for the purpose of this condition, shall be and only be the person to whom the original invoice is made out by Noonans in respect of the lot sold.

CONDITIONS MAINLY CONCERNING SELLERS AND CONSIGNORS

14 Warranty of title and availability

The seller warrants to Noonans and to the buyer that he or she is the true owner of the property or is properly authorised to sell the property by the true owner and is able to transfer good and marketable title to the property free from any third party claims. The seller will indemnify Noonans, its servants and agents and the buyer against any loss or damage suffered by either in consequence of any breach on the part of the seller.

15 Reserves

The seller shall be entitled to place, prior to the first day of the auction, a reserve at or below the low estimate on any lot provided that the low estimate is more than £100. Such reserve being the minimum 'hammer price' at which that lot may be treated as sold. A reserve once placed by the seller shall not be changed without the consent of Noonans. Noonans may at their option sell at a 'hammer price' below the reserve but in any such cases the sale proceeds to which the seller is entitled shall be the same as they would have been had the sale been at the reserve. Where a reserve has been placed, only the auctioneer may bid on behalf of the seller.

16 Authority to deduct commission and expenses

The seller authorises Noonans to deduct commission at the 'stated rate' and 'expenses' from the 'hammer price' and acknowledges Noonans' right to retain the premium payable by the buyer.

17 Rescission of sale

If before Noonans remit the 'sale proceeds' to the seller, the buyer makes a claim to rescind the sale that is appropriate and Noonans is of the opinion that the claim is justified, Noonans is authorised to rescind the sale and refund to the buyer any amount paid to Noonans in respect of the lot.

18 Payment of sale proceeds

Noonans shall remit the 'sale proceeds' to the seller 35 days after the auction, but if by that date Noonans has not received the 'total amount due' from the buyer then Noonans will remit the sale proceeds within five working days after the date on which the 'total amount due' is received from the buyer. If credit terms have been agreed between Noonans and the buyer, Noonans shall remit to the seller the sale proceeds 35 days after the auction unless otherwise agreed by the seller.

19 If the buyer fails to pay to Noonans the 'total amount due' within 35 days after the auction, Noonans will endeavour to notify the seller and take the seller's instructions as to the appropriate course of action and, so far as in Noonans' opinion is practicable, will assist the seller to recover the

'total amount due' from the buyer. If circumstances do not permit Noonans to take instructions from the seller, the seller authorises Noonans at the seller's expense to agree special terms for payment of the 'total amount due', to remove, store and insure the lot sold, to settle claims made by or against the buyer on such terms as Noonans shall in its absolute discretion think fit, to take such steps as are necessary to collect monies due by the buyer to the seller and if necessary to rescind the sale and refund money to the buyer if appropriate.

20 If, notwithstanding that, the buyer fails to pay to Noonans the 'total amount due' within 35 days after the auction and Noonans remits the 'sale proceeds' to the seller, the ownership of the lot shall pass to Noonans.

21 Charges for withdrawn lots

Where a seller cancels instructions for sale, Noonans reserve the right to charge a fee of 15% of Noonans' then latest middle estimate of the auction price of the property withdrawn, together with Value Added Tax thereon if the seller is resident in the UK, and 'expenses' incurred in relation to the property.

22 Rights to photographs and illustrations

The seller gives Noonans full and absolute right to photograph and illustrate any lot placed in its hands for sale and to use such photographs and illustrations and any photographs and illustrations provided by the seller at any time at its absolute discretion (whether or not in connection with the auction).

23 Unsold lots

Where any lot fails to sell, Noonans shall notify the seller accordingly. The seller shall make arrangements either to re-offer the lot for sale or to collect the lot.

24 Noonans reserve the right to charge commission up to one-half of the 'stated rates' calculated on the 'bought-in price' and in addition 'expenses' in respect of any unsold lots.

GENERAL CONDITIONS AND DEFINITIONS

25 Noonans sells as agent for the seller (except where it is stated wholly or partly to own any lot as principal) and as such is not responsible for any default by seller or buyer.

26 Any representation or statement by Noonans, in any catalogue as to authorship, attribution, genuineness, origin, date, age, provenance, condition or estimated selling price is a statement of opinion only. Every person interested should exercise and rely on his or her own judgement as to such matters and neither Noonans nor its servants or agents are responsible for the correctness of such opinions.

27 Whilst the interests of prospective buyers are best served by attendance at the auction, Noonans will, if so instructed, execute bids on their behalf. Neither Noonans nor its servants or agents are responsible for any neglect or default in doing so or for failing to do so.

28 Noonans shall have the right, at its discretion, to refuse admission to its premises or attendance at its auctions by any person.

29 Noonans has absolute discretion without giving any reason to refuse any bid, to divide any lot, to combine any two or more lots, to withdraw any lot from the auction and in case of dispute to put

up any lot for auction again.

30 (a) Any indemnity under these Conditions shall extend to all actions, proceedings costs, expenses, claims and demands whatever incurred or suffered by the person entitled to the benefit of the indemnity.

(b) Noonans declares itself to be a trustee for its relevant servants and agents of the benefit of every indemnity under these Conditions to the extent that such indemnity is expressed to be for the benefit of its servants and agents.

31 Any notice by Noonans to a seller, consignor, prospective bidder or buyer may be given by first class mail, airmail or email and if so given shall be deemed to have been duly received by the addressee within 48 hours.

32 These Conditions shall be governed by and construed in accordance with English law. All transactions to which these Conditions apply and all matters connected therewith shall also be governed by English law. Noonans hereby submits to the exclusive jurisdiction of the English courts and all other parties concerned hereby submit to the non-exclusive jurisdiction of the English courts.

33 In these Conditions:

(a) 'catalogue' includes any advertisement, brochure, estimate, price list or other publication;

(b) 'hammer price' means the price at which a lot is knocked down by the auctioneer to the buyer;

(c) 'total amount due' means the 'hammer price' in respect of the lot sold together with any premium, Value Added Tax chargeable and additional charges and expenses due from a defaulting buyer in pounds sterling;

(d) 'deliberate forgery' means an imitation made with the intention of deceiving as to authorship, origin, date, age, period, culture or source which is not shown to be such in the description in the catalogue and which at the date of the sale had a value materially less than it would have had if it had been in accordance with that description;

(e) 'sale proceeds' means the net amount due to the seller being the 'hammer price' of the lot sold less commission at the 'stated rates' and 'expenses' and any other amounts due to Noonans by the seller in whatever capacity and howsoever arising;

(f) 'stated rate' means Noonans' published rates of commission for the time and any Value Added Tax thereon;

(g) 'expenses' in relation to the sale of any lot means Noonans charges and expenses for insurance, illustrations, special advertising, certification, remedials, packing and freight of that lot and any Value Added Tax thereon;

(h) 'bought-in price' means 5 per cent more than the highest bid received below the reserve.

34 Vendors' commission of sales

A commission of 15% is payable by the vendor on the hammer price on lots sold.

Insurance is charged at 1.5% of the hammer price.

35 VAT

Commission, illustrations, insurance and expenses are subject to VAT if the seller is resident in the UK.

NOONANS
MAYFAIR

CONSIGNING NOW

JEWELLERY, WATCHES, SILVER & OBJECTS OF VERTU

10 SEPTEMBER 2024

CLOSING FOR ENTRIES 1 AUGUST

ALL ENQUIRIES: PLEASE CALL 020 7016 1700 OR EMAIL [JEWELLERY@NOONANS.CO.UK](mailto:jewellery@noonans.co.uk)



A PINK GOLD DUAL TIME RECTANGULAR WRISTWATCH BY JAEGER-LECOULTRE,
REVERSO, NIGHT & DAY, CIRCA 2000

SOLD ON 12 MARCH 2023 HAMMER PRICE: £5,500

AT NOONANS OUR EXPERTISE EXTENDS BEYOND THE KNOWLEDGE WITHIN OUR SPECIALIST DEPARTMENTS TO INCLUDE ALL ASPECTS OF OUR AUCTION HOUSE, FROM OUR PHOTOGRAPHY STUDIO TO OUR ADVANCED PROPRIETARY ONLINE BIDDING SYSTEM.

We're a close-knit team of experts with deep knowledge across our specialist subjects: banknotes, coins, detectorist finds, historical & art medals, jewellery, medals & militaria, objects of vertu, silver, tokens and watches. Focusing on these fascinating items, we share this expertise with an international community of sellers and buyers.

Each sale item that passes through our Mayfair auction house is appraised by an expert recognised as a leading authority in a particular field of interest, ranging from ancient coins and military medals to jewellery and vintage watches. This depth of knowledge across all departments sets us apart from other generalist auctioneers.

SELL WITH US

Respected worldwide for the breadth and depth of our specialist expertise, we can connect you to a broad, deep pool of potential buyers. Over the years, we've brought together an international community of people who share our particular passion. As recognised experts, with a vast store of freely available in-house knowledge and experience, we've earned the trust of buyers across the globe.

Our fees are transparent. Unlike many other auction houses, we don't charge for collecting your lots, photography or marketing and there's no minimum lot charge.

Not surprisingly, our position as a trusted authority, with deep global reach, often leads to the achievement of higher than expected prices at auction.

Free valuation

If you're interested in selling your items and you'd like a free auction valuation, without obligation, our specialists will be happy to help. You can submit online or bring your sale item to a valuation day at our Mayfair auction house or at a regional venue. Alternatively, request a home visit.

BUY WITH US

We're here for you, whether you're an experienced collector with a depth of knowledge or an occasional buyer attracted to a particular piece of jewellery or vintage watch.

Be assured that the item in question has been accurately described and photographed, detailing all available information, from its provenance to its current condition. Be certain that our price estimate is fair and sensible.

Delve deep into our website and you'll discover a vast store of helpful background data, including prices achieved for similar items at previous auctions. Informed and empowered, study our detailed online catalogue, then place your bid in complete confidence.

NOONANS
MAYFAIR



WWW.NOONANS.CO.UK