

NOON
MAY FAIRS

JEWELLERY, WATCHES, SILVER & OBJECTS OF VERTU

17 JUNE 2025 AT 12 NOON



FEATURED ABOVE

LOT 232

THE WARNER 'GRESHAM
GRASSHOPPER' SEAL RING
AN IMPORTANT 16TH
CENTURY GOLD SIGNET
RING, CIRCA 1560-1575

BACK COVER

LOT 413

A STAINLESS STEEL
AUTOMATIC SPLIT
CHRONOGRAPH
WRISTWATCH
BY IWC, CIRCA 2007

AUCTION

AN AUCTION OF:
JEWELLERY, WATCHES, SILVER & OBJECTS OF VERTU

DATE:
17 JUNE 2025 AT 12 NOON

CONTACTS

GENERAL AUCTION ENQUIRIES
AUCTIONS@NOONANS.CO.UK

JEWELLERY & WATCH ENQUIRIES
JEWELLERY@NOONANS.CO.UK

ACCOUNT ENQUIRIES
ACCOUNTS@NOONANS.CO.UK

BANK DETAILS

BANKERS: LLOYDS
ADDRESS: PICCADILLY, LONDON
SORT CODE: 30-96-64
ACCOUNT NO.: 00622865
SWIFT CODE: LOYDGB2L
IBAN: GB70LOYD30966400622865
BIC: LOYDGB21085

BOARD OF DIRECTORS

PIERCE NOONAN
CHAIRMAN AND CEO

NIMROD DIX
DEPUTY CHAIRMAN

ROBIN GREVILLE
CHIEF OPERATING OFFICER

CHRISTOPHER WEBB
CLIENT LIAISON DIRECTOR (NUMISMATICS)

AUCTION AND CLIENT SERVICES

PHILIPPA HEALY
ADMINISTRATION DIRECTOR
(ASSOCIATE DIRECTOR)
PHILIPPA@NOONANS.CO.UK
T. 020 7016 1775

ANNA HOPPER
SENIOR ADMINISTRATOR
ANNA@NOONANS.CO.UK
T. 020 7016 1700

SOFIA BUSACCA
ADMINISTRATOR
SOFIA@NOONANS.CO.UK
T. 020 7016 1700

LOUIS OCONNOR
ADMINISTRATOR
LOUIS@NOONANS.CO.UK
T. 020 7016 1700

CHRISTOPHER MELLOR-HILL
HEAD OF CLIENT LIAISON (ASSOCIATE DIRECTOR)
CHRISTOPHER@NOONANS.CO.UK
T. 020 7016 1771

JAMES CARVER
CLIENT LIAISON
JBC@NOONANS.CO.UK
T. 020 7016 1770

CHRIS FINCH HATTON
CLIENT LIAISON
FINCH@NOONANS.CO.UK
T. 020 7016 1754

JAMES KING
SALEROOM AND FACILITIES MANAGER
JAMES@NOONANS.CO.UK
T. 020 7016 1755

IAN ANDERSON
CHIEF TECHNOLOGY OFFICER
(ASSOCIATE DIRECTOR)
IAN@NOONANS.CO.UK
T. 020 7016 1751

JEWELLERY SPECIALISTS

FRANCES NOBLE FGA DGA
HEAD OF JEWELLERY DEPARTMENT
(ASSOCIATE DIRECTOR)
FRANCES@NOONANS.CO.UK
T. 020 7016 1781

RACHEL BAILEY FGA DGA
JEWELLERY SPECIALIST
RACHEL@NOONANS.CO.UK
T. 020 7016 1784

LAURA SMITH FGA DGA
JEWELLERY SPECIALIST
LAURA@NOONANS.CO.UK
T. 020 7016 1782

JESSICA EDMONDS FGA DGA
JEWELLERY SPECIALIST
JESSICA@NOONANS.CO.UK
T. 020 7016 1783

WATCH SPECIALIST

JOANNE LEWIS
WATCH SPECIALIST
JOANNE@NOONANS.CO.UK
T. 020 7016 1785

OBJECTS OF VERTU SPECIALIST

MICHAEL WELCH
SPECIALIST
MICHAEL@NOONANS.CO.UK
T. 020 7016 1700



ORDER OF SALE

JEWELLERY, WATCHES, SILVER & OBJECTS OF VERTU

TUESDAY 17 JUNE AT 12 NOON

JEWELLERY	1–353
WATCHES	354–424
SILVER & OBJECTS OF VERTU	425–501

VIEWING

MONDAY 9 JUNE **TRADE VIEWING BY APPOINTMENT ONLY** 10 AM–4.30 PM

THURSDAY 12 JUNE 10 AM–4.30 PM

FRIDAY 13 JUNE 10 AM–4.30 PM

SUNDAY 15 JUNE 12 NOON–4 PM

MONDAY 16 JUNE 10 AM–4.30 PM

NO VIEWING ON SALE DAY

ALL LOTS ARE AVAILABLE TO VIEW ONLINE WITH FULL ILLUSTRATIONS
AND CONDITION REPORTS AT WWW.NOONANS.CO.UK

JUNE TO JULY VALUATION DAYS

PLEASE CALL 020 7016 1700 OR EMAIL JEWELLERY@NOONANS.CO.UK FOR AN APPOINTMENT

BATH

12 JUNE 11 AM–3 PM
LANSDOWN GROVE HOTEL
LANSDOWN ROAD,
SOMERSET BA1 5EL

BERKHAMSTED

17 JULY 10 AM–2 PM
TOWN HALL, 196 HIGH STREET
HERTFORDSHIRE HP4 3AP

BLACKHEATH

25 JUNE & 16 JULY 10 AM–2 PM
THE CONSERVATOIRE
19-21 LEE ROAD
BLACKHEATH VILLAGE, SE3 9RQ

BURY-ST-EDMUNDS

7 JULY 11 AM–4 PM
THE ANGEL HOTEL
3 ANGEL HILL, SUFFOLK IP33 1LT

HAMPSTEAD

9 JULY 11 AM–4 PM
BURGH HOUSE
NEW END SQUARE, LONDON NW3 1LT

CANTERBURY

29 JULY 11 AM–4 PM
ABODE HOTEL
30-33 HIGH STREET
KENT CT1 2RX

MARLOW

24 JUNE & 15 JULY
10 AM–3 PM
DANESFIELD HOUSE HOTEL
HENLEY ROAD, MEDMENHAM
BUCKINGHAMSHIRE SL7 2EY

PETERSFIELD

19 JUNE 10 AM–3 PM
SKY PARK FARM
HAMPSHIRE GU31 5PT

RICHMOND-ON-THAMES

10 JULY 10 AM–3 PM
RICHMOND HILL HOTEL
144–150 RICHMOND HILL
SURREY TW10 6RW

SHAFTESBURY

13 JUNE 10 AM–2 PM
GROSVENOR ARMS HOTEL
HIGH STREET, DORSET SP7 8JA

WAREHAM

11 JUNE 11 AM–3 PM
THE PRIORY HOTEL
CHURCH GREEN, DORSET BH20 4ND

SUMMARY OF INFORMATION FOR BUYERS

REGISTERING TO BID

New clients must register online to bid (whether in person or in absentia). This can be done via our website www.noonans.co.uk

Registrations will be subject to due diligence and Noonans reserves the right to cancel registrations.

Once registered, any client bidding for the first time online will need to enter their card details so that a security check can be performed to authorise you to bid (www.noonans.co.uk >Your Account > Account Authorisation). This check is secure, your card details are not seen by us and no funds will be deducted.

BIDDING PRIORITY

Please note that we prioritise executing commission bids as early as possible in order to secure the lot for you at the cheapest possible price. It is therefore entirely possible that a lot can sell at your top bid to another bidder. To avoid this happening we offer an optional 'Plus 1' bidding increment facility, whereby if the bidding is against you at your maximum bid the auctioneer will execute one further bid on your behalf. Please note that in the event of identical top bids priority is given to the first bid received.

PLACING BIDS

LIVE BIDDING VIA WWW.NOONANS.CO.UK

You may bid in real time from your computer or mobile device. We provide an optional live video and audio feed of the auctioneer, allowing you to participate in much the same way as attending the auction. You may see your invoice and pay online directly after you've finished bidding. **There is no additional charge for this facility.**

ADVANCE BIDDING VIA WWW.NOONANS.CO.UK

We strongly advise this method if you wish to leave bids in advance as it is the easiest, most accurate and flexible way to leave your bids and gives you total control over them right up to the point that the lot is offered for sale. Bids made online cannot be seen by others and only become live at the point the lot is being sold. Up until this time your bids can be easily altered or cancelled. An automated email is sent to confirm any changes made. **There is no additional charge for online bidding.**

ADVANCE BIDDING VIA POST, EMAIL OR TELEPHONE

Whilst we are still happy to execute all bids submitted to us using post, email or telephone, it should be noted that all bids left with us in these ways will be entered at our offices using exactly the same bidding facility to which all our clients have access. **There is, therefore, no better way of ensuring the accuracy of your advance bids than to place them yourself online.**

If you are registered with Noonans you may bid by email to bids@noonans.co.uk or by telephone to 020 7016 1700.

All bids placed by email or telephone must be received before 4 PM on the day preceding the sale.

A bidding form is included in the back of this catalogue. If you wish to use this please fill it in carefully, to include all relevant information. Please ensure that you post this form so that it arrives, at the latest, the day before the sale.

BIDDING IN THE AUCTION ROOM

You are very welcome to attend the auction and bid in person if you are registered with Noonans. Please note that the auction room is situated on the third floor of a Georgian building which doesn't have a lift. You may pay for and collect your lots during the auction.

SALEROOM NOTICES

Should the description of a lot need to be amended after the publication of this catalogue, the amendments will appear automatically on the Noonans website, www.noonans.co.uk. All such amendments are also incorporated in the List of Saleroom Notices pertaining to this auction which are posted separately on the website. The auctioneer will refer to any notices at the time any affected lot is offered for sale.

CATALOGUE ILLUSTRATIONS & THE INTERNET

Prospective bidders are reminded that the Noonans website features high-resolution colour illustrations of every lot in this auction. There may also be additional illustrations of any lot.

BUYERS' PREMIUM

The rate for this sale is 24% of the Hammer Price (+ VAT where applicable).

IMPORTATION VAT

Lots marked 'X' are subject to importation VAT of 5% on the Hammer Price unless re-exported outside the UK, as per Noonans Terms & Conditions of Business.

From 1 January 2021 importation VAT may be levied by EU countries on lots sold by Noonans and subsequently imported into those countries. Although Noonans is unable to advise buyers on customs regulations in their country of domicile, there is further information regarding EU importation VAT rates for collectable items in the Terms and Conditions published on the Noonans website.

ARTISTS RESALE RIGHTS (DROIT DE SUITE)

Droit de Suite is a royalty payable to a qualifying artist or their estate every time the artist's work is sold at auction or by an art market professional during the artist's lifetime and for a period of up to 70 years following the artist's death. Royalties are calculated on a sliding percentage scale based on the hammer price. Lots subject to this royalty payment are marked with ARR in the catalogue.

TREATED GEMSTONES

It is common practice for many gemstones to be subject to various treatments to improve their appearance. Sapphires and rubies are routinely heat treated to improve their colour and clarity, emeralds may be treated with oils or resin, other gemstones may be subject to treatments such as staining, irradiation or coating. Jade may be bleached, polymer/resin filled or dyed, or a combination of treatments used. Bidders should be aware that, unless stated to the contrary in the catalogue description, it should be assumed that the gemstones may be treated. Where reports are provided from gem laboratories, the opinions as to gradings and treatments of stones may differ slightly between laboratories and Noonans cannot be held responsible for any discrepancies.

UNMOUNTED GEMSTONES

Please note that VAT at 20% is payable on the Hammer price for unmounted diamonds, rubies, sapphires and emeralds. Relevant lots are marked with an asterisk *. See www.gov.uk/guidance/the-margin-and-global-accounting-scheme-vat-notice

EXPORT OF ORGANIC MATERIALS

Lots marked 'Y' are subject to CITES legislation. Organic materials, such as coral and tortoiseshell may be covered by CITES legislation and this may or may not impact export to other countries. Please be aware that it is the buyer's responsibility to arrange for any CITES export licences for their purchases. Please see www.cites.org. In addition to CITES, mother-of-pearl, coral, and tortoiseshell, if imported into the USA, will be subject to USA Fish and Wildlife regulations.

WATCHES

All watches are sold as viewed.

Please note that watches with water-resistant cases have been opened to identify the movement and so will no longer be water-resistant unless a service to reseal the watch is undertaken at the buyer's expense.

Watches may have been repaired during the course of their lifetime and Noonans do not guarantee the authenticity of any individual component parts.

In some circumstances we are unable to ship the watch with its strap due to certain import restrictions regarding material derived from endangered or protected species.

PRICES REALISED

The hammer prices of lots sold at Noonans auctions are posted at www.noonans.co.uk in real time and telephone enquiries are welcome from 9 AM on the day after the auction.

PAYMENT

You may access your invoice shortly after the hammer has fallen on your last lot. As we weigh lots at the time of cataloguing most shipping is already calculated, enabling you to settle your account and receive your lots in a timely fashion. Auction attendees may pay and collect during the course of the auction as soon as they have bid on their last lot.

[Full Terms and Conditions of Business](#) are available to read in the back of this catalogue and on our website.

CONTACTS

GENERAL SUPPORT

auctions@noonans.co.uk
020 7016 1700 or from overseas
(+44) 20 7016 1700

WEBSITE AND LIVE BIDDING SUPPORT

[Ian Anderson](mailto:ian@noonans.co.uk)
ian@noonans.co.uk
020 7016 1700 or from overseas
(+44) 20 7016 1700

NOONANS
MAYFAIRS

CONSIGNING NOW

WATCHES

17 SEPTEMBER

CLOSING FOR ENTRIES 1 AUGUST

ALL ENQUIRIES: PLEASE CALL 020 7016 1700 OR EMAIL [JEWELLERY@NOONANS.CO.UK](mailto:jewellery@noonans.co.uk)



A LADY'S GOLD AND DIAMOND-SET AUTOMATIC WRISTWATCH WITH MOTHER-OF-PEARL DIAL, DATE AND BRACELET, PEARLMASTER BY ROLEX, CIRCA 2007
SOLD ON 26 MARCH HAMMER PRICE: £26,000



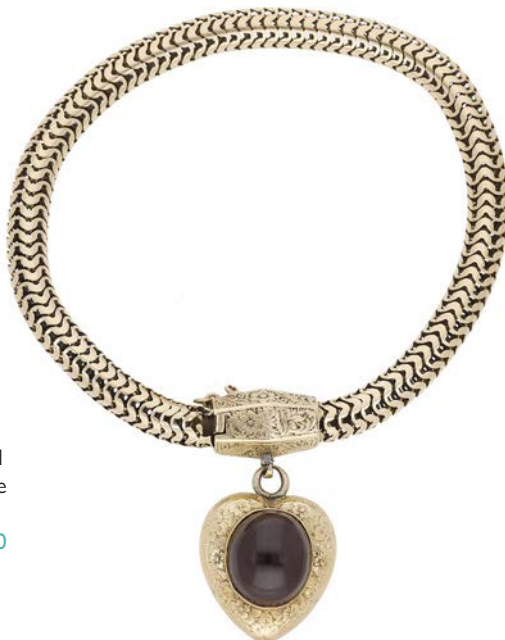
JEWELLERY

LOT

No 311

1
A MID 19TH CENTURY GARNET BRACELET, the serpent-link chain with a foliate engraved barrel-shaped clasp, suspending a similarly engraved heart-shaped drop set with a garnet cabochon, the reverse with glazed compartment, length 19.5cm.

£400–£600



2
AN 18CT GOLD RING, 1894, the diagonal rounded bands alternately plain and foliate engraved, London hallmark, maker's mark 'BDCo', ring size K.

£240–£300

A similar ring is illustrated in *Rings 1800–1910, a study of English and related designs*, by Verlaine Davies, fig 287 page 109.



3
AN EARLY 19TH CENTURY ACROSTIC 'REGARD' RING, the graduated vari-cut rubies, emerald, garnet, amethyst and diamond spelling 'REGARD', to a scrolled mount with pierced shoulders and engraved band, mounted in gold, ring size N.

£150–£200



4
AN 18CT GOLD AND DIAMOND SINGLE STONE RING, 1899, the tapered band bezel-set with an old-brilliant-cut diamond in a star setting, Chester hallmark, diamond weight approximately 0.63 carat, ring size L½.

£400–£600

5
A MID 19TH CENTURY BLOOMED GOLD LOCKET BANGLE, the circular compartment decorated with ropetwist wire detail and anthemion motifs, centred with a ruby and half pearl quatrefoil, glazed within, associated case by Hamilton & Co., inner diameter 57mm.

£1,200–£1,500



6

A MID 19TH CENTURY AQUAMARINE BROOCH, the openwork knot with wraparound tendrils and leaves, suspending an oval-cut aquamarine drop, mounted in gold, fitted case, length 7cm. £800–£1,200

To be sold on behalf of the International Liberty Association, Charity number 1160607.



7

A MID 19TH CENTURY BANGLE, EAR PENDANT AND BROOCH SUITE, the tapered bangle with applied lozenge set with pearl and diamond highlights with blue enamel detailing, the ear pendants and brooch en suite, bloomed finish, mounted in gold, (pearls untested), brooch length 5cm.

£1,500–£2,000



8

A MID 19TH CENTURY GOLD BANGLE, the two demi-lune motifs engraved with foliate decoration, spaced by a series of mixed-cut rubies and half pearls, with applied fleur-de-lys motifs to either side, (pearls untested), inner diameter 5.4cm. £1,200–£1,500





9

AN 18CT GOLD SWALLOW BROOCH, 1984, realistically modelled and textured, with brilliant-cut diamond eyes, London hallmark, maker's mark 'CC', length 32mm. £200-£300



10

TWO PAIRS OF CUFFLINKS, the first of trapezium outline and inset with an Iranian 1/4 Pahlavi, Iranian assay marks, together with a lozenge-shaped pair with monogram engraving, Florentine finish and pierced surround, stamped '14K', first length 30mm. £800-£1,200



11

A PAIR OF NOVELTY EAR STUDS, realistically modelled as a pair of angelfish, stamped '14K', length 20mm. £150-£200



12

A 9CT GOLD NOVELTY CHARM, the realistically modelled goose laying an egg, with sliding bale mechanism, London hallmark, length 28mm. £120-£150

13

A CONVERTIBLE CULTURED PEARL NECKLACE, fashioned as either a single strand or two separate rows of cultured pearls, with fluted boule clasps, stamped '14K', individual lengths 64 and 77cm. £300-£500





14

A MULTI-STRAND GARNET NECKLACE WITH ANTIQUE GOLD CLASP, CIRCA 1830, the 10 rows of garnet beads with vertical spacer bars leading to a curved oval vari-coloured gold clasp set with foiled back table-cut garnets, with cannetille decoration throughout, length 37cm. **£500–£700**

15

A 'PEARLS BEFORE SWINE' BROOCH BY SARAH JONES, 1994, the arc-shaped brooch modelled as three pigs seated before a spray of vari-sized cultured pearls, mounted in 18ct gold, London hallmark, maker's mark 'SJ', maker's case, length 5cm. **£600–£800**

The phrase 'Pearls before swine' is taken from The Sermon on the Mount, Matthew Ch.7 v.6.



16

A PAIR OF 18CT GOLD AND DIAMOND 'KISSING COUPLE' EAR STUDS BY SARAH JONES, 1995, each modelled as two heads, their arms entwined and set with a pair of brilliant-cut diamond highlights, maker's mark 'SJ', London hallmark, maker's case, diameter 12mm. **£400–£600**



17

A DIAMOND FLOWERHEAD CLUSTER RING, set throughout with brilliant-cut diamonds, between trifurcated shoulders, stamped '18ct plat', ring size K $\frac{1}{2}$. **£200–£260**



18

AN OPAL AND DIAMOND CLUSTER RING, the opal cabochon within a surround of old brilliant-cut diamonds, between bifurcated shoulders, numbered, ring size M. **£500–£600**

19

A DIAMOND BANGLE, the hinged bangle collet-set throughout with vari-coloured brilliant-cut diamonds, stamped '750 18K', (diamonds untested for natural colour), total diamond weight approximately 1.80 carats, inner dimensions 6 x 5cm. **£1,000–£1,500**





20

A **TURQUOISE PENDANT**, the turquoise cabochon within a textured radiating surround, suspended from a fancy-link chain, (turquoise untested), pendant stamped '21', chain stamped 'K18', pendant length 45mm, chain length 44cm. £500-£700



21

TWO **18CT GOLD BROOCHES BY CROPP & FARR**, the first with flowering thistles set with circular-cut sapphires, the second with diamond-set flowerheads, first with London import for 1966, both with maker's marks, lengths 50mm and 45mm. £400-£600

According to a PMI test on the XRF analyzer, the triple flowerhead brooch is testing as 18ct gold.



22

A **PAIR OF ENAMEL AND DIAMOND CUFFLINKS**, of single-sided target design, set with brilliant-cut diamonds and turquoise enamel, with chain connectors and bar terminals, plaque diameter 15mm. £200-£300



23

A **GEM-SET BROOCH, CIRCA 1964**, the cluster of turquoise cabochons within a surround of scrolling textured fronds, each terminating in a cultured pearl, mounted in 18ct gold, London import mark, length 5.5cm. £600-£800

24

AN **18CT GOLD FLORAL BROOCH**, the textured flowerhead set with turquoise cabochons to the centre, maker's mark 'RHB', Birmingham import mark for 1993, length 47mm. £300-£400



25 Y

AN EARLY 20TH CENTURY CORAL AND TURQUOISE NECKLACE, the belcher-link chain spaced with turquoise and *Corallium Rubrum* beads, suspending a similarly-set detachable brooch/pendant, the wirework mount incorporating the initials 'J, M, H, C', with a pear-shaped turquoise drop below, stamped '9c', length 42cm. £300–£500



26

A LATE 19TH CENTURY DIAMOND RING, set with a graduated row of old brilliant-cut diamonds, mounted in gold, stamped '18', total diamond weight approximately 0.25 carat, ring size O. £200–£300



27

A TURQUOISE AND DIAMOND SERPENT RING, 1872, modelled as two coiled serpents, each with a cabochon turquoise head and rose-cut diamond / gemstone eyes, mounted in 18ct gold, Birmingham hallmark, maker's mark 'A', ring size P. £300–£500

A similar ring is illustrated in *Rings 1800–1910, a study of English and related designs*, by Verlaine Davies, fig 116, page 49.



28

A DIAMOND TWO STONE RING, the brilliant-cut diamonds between crossover shoulders, mounted in 18ct gold, UK hallmark, total diamond weight approximately 0.30 carat, ring size N. £200–£300



29

A DIAMOND CLUSTER RING, CIRCA 1890, set with old brilliant-cut diamonds, mounted in silver and gold, stamped '18CT', total diamond weight approximately 0.65 carat, ring size O. £300–£500



30 Y

A 19TH CENTURY CORAL STICKPIN, modelled as an eagle's claw grasping a *Corallium Rubrum* bead, mounted in gold, cased, terminal diameter 8.5mm. £150–£200





31

TWO COIN JEWELS, the George V half sovereign and Edward VII sovereign collet-set to a 9ct pendant and bar brooch respectively, brooch length 5.5cm. £600-£800



32

A 9CT GOLD BRACELET, the curb-link chain with a heart-shaped padlock clasp, UK hallmark for 1970, length 19cm. £500-£700

33

A GOLD NECKLACE, the 9ct gold fancy-link chain suspending an 18ct gold medallion, with achievement of arms and personal inscription, UK hallmarks, chain length 158cm. £1,500-£2,000



34

A SOVEREIGN PENDANT ON CHAIN, the Victoria sovereign, 1885, set within a ropetwist and zig-zag surround, further enclosed by a 9ct gold mount with faceted decoration, the whole suspended by a belcher-link chain, pendant diameter 40mm. £600-£800



35

A GOLD COIN PENDANT, set with a Victoria two pound gold coin, 1893, in a 9ct gold mount with UK hallmark, length including bale 40mm. £1,000-£1,200

36

A GOLD COIN BROOCH, the Victoria gold half sovereign, 1887, in a detachable brooch frame, stamped '9ct', together with a loose half sovereign, 1958. (2) £500-£700



37

A 9CT GOLD ALBERT CHAIN, 1929, the trombone-link chain with T-bar fitting and swivel clasp terminals, Birmingham hallmark, length 42cm. £400-£600



38

A ROPETWIST NECKLACE, of bicolour design, stamped '18Kt', Italian assay mark, length 80cm. £1,500-£2,000





39

A LATE 19TH CENTURY REVERSE PAINTED ROCK CRYSTAL PENDANT, the heart-shaped crystal reverse carved and painted to depict a spray of lily of the valley, within a half-pearl surround, closed-back setting, mounted in gold, suspended from an unassociated curb-link chain, pendant stamped '18ct', chain stamped '9ct', (pearls untested), *pendant length including bale 23mm.* £400–£500

In the 19th century flowers were used as a secret language. The Lily of the Valley was said to represent a 'Return to happiness' (also used in mourning) or 'You are beloved'.



40

AN EARLY 20TH CENTURY GEM-SET PENDANT, BY MURRELL BENNETT & CO., the oval mottled black, white and green polycrystalline cabochon set within a whiplash surround, suspending three freshwater pearl drops below, from a belcher-link chain, stamped 'MBCo' and '15ct', (pearls untested), *pendant length 36mm.* £300–£400



41

AN 18CT GOLD SAPPHIRE AND DIAMOND BAND RING, 1902, the cushion-shaped sapphire with an old brilliant-cut diamond to either side, with star and scroll engraved detailing, London hallmark, partial maker's mark, numbered, *ring size O.* £200–£300



42

A GEM-SET RING, the antique cluster set throughout with vari-cut diamonds and circular-cut red gemstones, (later converted), *ring size J–K.* £800–£1,200



43

A SEED PEARL AND DIAMOND RING, 1889, set to the front with an alternating row of half seed pearls and old brilliant-cut diamonds, engraved initials 'W.M.' and 'M.P.', mounted in 18ct gold, Chester hallmark, *ring size L.* £150–£200

44

A LATE 19TH CENTURY GEM-SET LOCKET ON CHAIN, the oval locket centred with an applied ruby and diamond-set monogram, mounted in gold, the whole suspended by a later double-row ropetwist chain, *locket length 45mm.* £1,400–£1,600





45

A RUBY AND SEED PEARL BROOCH, CIRCA 1890, of scroll design, topped with a spray of three circular-cut rubies, set throughout with seed pearls and suspending a pearl drop below, mounted in gold, (pearls untested), fitted case by Rood & Co. Ltd., diameter 38mm. £400–£600

S. J. Rood jewellers were established in London's Burlington Arcade in 1873 by the Allen family. In 1900 the company was awarded the Royal Warrant by Queen Mary, who proved to be a regular customer of the firm. The company was purchased by Hancocks & Co. in 1998.

46

A PEARL AND DIAMOND BROOCH, of openwork whiplash design, set with a pearl between two old brilliant-cut diamonds and suspending a pearl drop below, (pearls untested), stamped '75*' (rubbed), total diamond weight approximately 0.20 carat, length 38mm.

£200–£300



47

AN ART NOUVEAU FLORAL JEWEL, the realistically modelled spray of baroque-shaped pearls and scrolling tendrils with red and green enamel decoration and seed pearl highlights, mounted in gold, (pearls untested), length 35mm.

£500–£700



48

A LATE 19TH CENTURY ENAMEL FLOWER BROOCH, the petals decorated with polychrome painted enamel and rose-cut diamonds, with central old brilliant-cut diamond and rose-cut diamond stem, mounted in silver and gold, Austro-Hungarian import mark, principal diamond approximately 0.25 carat, length 36mm.

£240–£300

49

A LATE 19TH CENTURY DIAMOND STICKPIN, designed as a woodcock set throughout with rose-cut diamonds, with pink cabochon eye and engraved feather detailing to the reverse, mounted in silver and gold, terminal dimensions 11.1 x 16.2mm.

£150–£200





50

A CULTURED PEARL AND GEM-SET NECKLACE, the cultured pearls, *measuring approximately 9.5mm*, interspersed with sapphire-set roundels and with a boule-shaped clasp pavé-set with emeralds, sapphires, rubies and diamonds, accompanied by three loose cultured pearls and a sapphire-set roundel, stamped '585', *length 41cm*. £600-£800



51

A CULTURED PEARL NECKLACE, the graduated row of white, yellow and grey tints, *measuring approximately 9.7-11.3mm*, with interchangeable clasps, one of bicoloured boule design and the other a cultured pearl, accompanied by four loose cultured pearls, bicoloured clasp stamped 'Pt950', *length 42cm*. £600-£800



52

AN INTERCHANGEABLE CULTURED PEARL NECKLACE, the single row of cultured pearls, *measuring approximately 14.7 x 12.5mm*, to a detachable boule-shaped clasp set with brilliant-cut diamonds, together with an alternate row of cultured pearls of grey tint, *measuring approximately 13.5mm*, accompanied by eight loose cultured pearls, *necklace length including clasp 42cm*. £1,500-£2,000



53

A PAIR OF MATCHING CULTURED PEARL NECKLACES, the multi-row wirework bibs interspersed with graduated cultured pearls of white, light pink and black tint, stamped '750', length approximately 42.5cm. £1,000–£1,500



54

A DIAMOND HEART PENDANT BY TIFFANY & CO., the open heart set throughout with brilliant-cut diamonds, suspended by a trace-link chain, maker's mark '©T&Co.', stamped 'PT950', maker's case, pendant length 14mm, chain length 41cm. £600-£800



55

A 'TEARDROP' PENDANT ON CHAIN BY ELSA PERETTI FOR TIFFANY & CO., the polished pendant suspended by a cable-link chain, signed, stamped 'Sterling', maker's pouch, pendant length 25mm, chain length 62cm. £150-£200



56

A DIAMOND 'ETOILE' RING BY TIFFANY & CO., set with brilliant-cut diamonds, signed, stamped 'PT950', maker's case, ring size U. £400-£600



57

A DIAMOND 'ETOILE' RING BY TIFFANY & CO., set with brilliant-cut diamonds, maker's mark, stamped '750 PT50', total diamond weight approximately 0.40 carat, ring size R½. £400-£600



58

A PLATINUM WEDDING BAND BY TIFFANY & CO., the plain polished band of court-shaped profile, London hallmark, signed, ring size T½. £400-£600

59

A 'DIAMONDS BY THE YARD' BRACELET AND A 'COLOR BY THE YARD' BRACELET BY ELSA PERETTI FOR TIFFANY & CO., the first set with brilliant-cut diamonds, mounted in 18ct gold, the second set with circular-cut aquamarines, first signed 'T&Co.', UK hallmark, second signed 'TIFFANY & CO.', stamped '925', both signed 'PERETTI', total diamond weight approximately 0.50 carat, lengths 16.5cm and 20cm. £300-£500





60

A FRINGE NECKLACE, composed of continuous triangular concave links, maker's mark 'M', stamped '750', length 42cm. **£1,600–£2,000**



61

AN ORANGE SAPPHIRE AND DIAMOND THREE STONE RING, the cut-cornered sapphire collet-set between step-cut diamond shoulders, stamped '750', ring size P. **£800–£1,200**

62

A DIAMOND RING, the shaped band terminating to either side with a triangular-cut diamond, mounted in 18ct gold, UK hallmark,, ring size O. **£300–£500**





Partially illustrated

63 Y

THREE 19TH CENTURY TORTOISESHELL JEWELS, the hinged bangle, brooch and star-shaped jewel with gold and silver piquéwork decoration throughout, together with a faux tortoiseshell purse with similar inlaid design and monogrammed cartouche, various dimensions. (4)

£100–£120



64

A DIAMOND SINGLE STONE RING, the brilliant-cut diamond illusion-set to a pierced gallery and tapered band, (misshapen), diamond weight approximately 0.80 carat.

£400–£600

According to a PMI test on an XRF Analyzer the ring is testing as 17ct gold.



65

A DIAMOND SINGLE STONE RING, the brilliant-cut diamond collet-set between tapered shoulders, mounted in 18ct gold, London hallmark, diamond weight approximately 0.30 carat, ring size J–K.

£200–£300

66

A COLLECTION OF ANTIQUE STICKPINS, including enamelled and gem-set examples, depicting dogs, hunting themes, etc. various lengths. (10)

£300–£360





67

AN ISLAMIC INTAGLIO PENDANT, the rectangular plaque with carved and painted Islamic religious script and flowerheads, to a plain mount, *plaque dimensions 33 x 42mm.*

£100–£150

68

A PAIR OF ART NOUVEAU CUFFLINKS, with chased scroll and foliate motif decoration; centred with a later added diamond cluster, to chain connections and lozenge-shaped terminals with chevron pattern, (composite), *panel lengths 20mm.*

£200–£300



69

AN EARLY 20TH CENTURY OPAL AND DIAMOND BAR BROOCH, the knife-edge bar set with opal cabochons and old brilliant-cut diamonds, mounted in gold, engraved '122' and '15CT', *length 38mm.*

£100–£150



70

A PAIR OF COSTUME EAR CLIPS BY CHRISTIAN DIOR AND A PAIR OF 19TH CENTURY TORTOISESHELL EARRINGS, the square-shaped clips of stepped design and with reeded decoration, signed, together with a pair of tortoiseshell ear pendants inlaid with gold and silver piquéwork decoration, *first length 35mm.*

£100–£150

71

A 9CT GOLD NECKLACE AND A BRACELET, the necklace of curb-link design, the bracelet of gate-link, necklace with UK hallmark, bracelet stamped '9C', *lengths 46cm and 19cm.*

£800–£1,200



72

A LATE 19TH CENTURY AMETHYST AND PEARL CLUSTER BROOCH, the oval mixed-cut amethyst set within a surround of half pearls, mounted in gold, (pearls untested), length 30mm.
£400–£600



73

AN 18CT GOLD 'MIZPAH' RING, 1890, the letters spaced against a bloomed ground, centred with an old brilliant-cut diamond, between beaded borders, maker's mark 'JT'; London hallmark, ring size R.
£300–£400

The term 'Mizpah' is from the Hebrew word meaning 'watchtower' and is taken from the Old Testament story, Genesis 31:49. Jacob and Laban made a pact of loyalty to one another and built a 'watchtower' (or Mizpah) of stones, with God as their witness. The word represents the sentiment 'The Lord Watch between me and thee, when we are absent one from another' and has come to symbolise a bond of love or friendship between two people whilst apart.

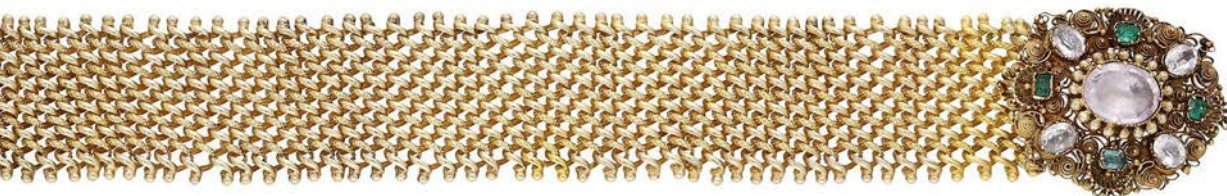
74

A GOLD PROSPECTOR'S BROOCH, fashioned as a miner's shovel, stamped 'SOUTH AFRICA', crossed with a pick axe, bucket, chain and nugget, signed 'S Bros', stamped '9ct', length 5.2cm.
£160–£200



75

A SMALL COLLECTION OF ANTIQUE JEWELLERY, comprising an early 19th century mesh-link choker with gem-set cannetille clasp, an amethyst and diamond set 'AMITIE' bracelet and late 18th century marquise-shaped panel ring with later enamelled plaque, first length approximately 32cm, ring size P.
£500–£700





76

A BLUE ZIRCON LOCKET, heart-shaped and with embossed floral decoration, the central flowerhead set with a circular-cut blue zircon, glazed within, stamped 'P.S.Co' for Plainville Stock Company of Massachusetts and '10k', length 25mm. £100–£150



77

A MID 19TH CENTURY GOLD BANGLE, the domed blue enamel boss within an entwined knot surround and with seed pearl highlight, inner dimensions approximately 5 x 5.5cm. £800–£1,000



78

OF SUFFRAGETTE INTEREST: A GOLD AND GEM-SET BANGLE, CIRCA 1905, set to the front with circular-cut amethysts and peridots spaced by diamond highlights, with graduated boule decoration, stamped '9.375', inner dimensions 6 x 5cm. £300–£500



79

AN AQUAMARINE PENDANT, CIRCA 1915, the three cushion-shaped aquamarines with foliate detailing between set with rose-cut diamonds, mounted in platinum and gold, fitted case by Mappin & Webb Ltd., chain length 41cm. £400–£600



80

A DIAMOND ETERNITY RING, set throughout with old brilliant and cushion-shaped diamonds, total diamond weight approximately 1.60 carats, ring size L. £400–£600



81

A SYNTHETIC RUBY AND DIAMOND RING, the square-cut synthetic ruby between single-cut diamond shoulders, stamped '18' and 'plat', ring size N. £120–£180



82

A DIAMOND SINGLE STONE RING, the brilliant-cut diamond between crossover shoulders, mounted in 18ct gold, UK hallmark, diamond weight approximately 0.25 carat, ring size N. £150–£200

83

AN 18CT GOLD BRACELET, 1982, of stylised mariner-link design, London import mark, sponsor's mark for Sannit & Stein, length 20cm. £300–£500



84

A CULTURED PEARL AND DIAMOND NECKLACE, the trace-link chain spaced by polished batons and graduated cultured pearls, leading to a pierced diamond-set trefoil surmount with seed pearl accent, above a similarly styled drop with detachable diamond cluster, (composite), total diamond weight approximately 0.45 carat, length 46.5cm. £600-£800



85

A LONG DIAMOND LINE NECKLACE, set throughout with brilliant-cut diamonds, Italian assay mark, stamped '750', total diamond weight approximately 12.5 carats, length 90cm. £3,000-£5,000



86

A DIAMOND LINE BRACELET, set with a continuous row of brilliant-cut diamonds, stamped 'au750', total diamond weight approximately 5.40 carats, length 17cm. £2,000-£3,000



87

AN ANTIQUE GOLD GUARD CHAIN, of fancy belcher-link design with swivel hook clasp, stamped '9.C.', length 85cm. £500-£700





88

A 9CT GOLD AND CITRINE FRINGE NECKLACE, 1965, the oval-cut citrines suspended by a fine curb-link chain, maker's mark for Thomas Kerr Ebbutt, Edinburgh hallmark, length 41cm. **£300–£500**



89

A DIAMOND RING, the brilliant-cut diamond in a raised six-claw setting, within crossover mount, mounted in 18ct gold, import mark for London 1989, diamond weight approximately 1.05 carats, ring size L. **£900–£1,200**



90

A DIAMOND RING, set with graduated old brilliant-cut diamonds, total diamond weight approximately 1.40 carats, ring size N½–O. **£1,200–£1,500**



91

AN EARLY 20TH CENTURY DIAMOND RING, set with three old brilliant-cut diamonds between crossover shoulders, mounted in platinum and gold, stamped '18CT' and 'PLAT', total diamond weight approximately 0.35 carat, ring size O–P. **£200–£300**

92

A LONG CHAIN NECKLACE, of pierced fancy-link design, length 146cm. **£500–£800**

According to a PMI test on an XRF Analyzer the chain is testing as 7ct gold.





93

AN EARLY 19TH CENTURY AGATE SUITE, the rivièrè necklace set with a graduated row of cushion-shaped agate panels in pinched collet settings, the bracelet and later adapted cross-shaped brooch en suite, mounted in gold, necklace length 42cm, bracelet 17.5cm. (3)

£1,500–£2,000

94

A FANCY-LINK CHAIN, stamped '585', indistinct maker's mark, length 41cm.

£300–£500





95

A ROYAL MEMORABILIA BROOCH BY MAPPIN & WEBB, 2022, the openwork crown with surmount formed as the number '70', set with circular-cut amethysts and a brilliant-cut diamond, mounted in platinum, platinum jubilee hallmark, maker's case and guarantee, *width 21mm*. £200–£300

These limited edition brooches were produced by Mappin & Webb Ltd. in celebration of the Platinum Jubilee of Queen Elizabeth II in 2022. The guarantee accompanying this lot states that this brooch is number four of seven.



96

A PAIR OF ENAMEL CUFFLINKS, FRENCH, the oval panels decorated with a geometric pattern in red and black enamel, French maker's marks (rubbed), *plaque length 16.5cm*. £200–£300



97

H.R.H. THE DUKE OF WINDSOR (FORMERLY KING EDWARD VIII): A PAIR OF ROYAL PRESENTATION CUFFLINKS BY CARTIER, CIRCA 1940, double-sided, one oval panel engraved with conjoined initials 'WE' for Wallis and Edward beneath a coronet, the other engraved with crowned 'E' cypher within Garter, with chain connectors, accompanied by a photograph of The Duke of Windsor and Wallis, Duchess of Windsor, signed in ink 'Wallis Windsor', 'Nassau 1941' and 'Edward', framed, cufflinks signed 'CARTIER', stamped '14K', cased by Collingwood, photograph with embossed stamp for 'Turgeon, Paramount Building, Palm Beach, Florida', mount signed in pencil 'Frank Turgeon', cufflink panel length 18.1mm, frame dimensions 51 x 38cm.

£2,000–£3,000

Provenance: Formerly the property of Mr Robert Walter Taylor CMG CBE. Thence by family descent.

Robert Walter Taylor was born in 1883 and worked for the Treasury in various overseas territories for the majority of his career. In 1919, whilst working as Treasurer in Somaliland, he received an OBE (promoted 1928) for 'services as Chief Cable Censor and in connection with recruiting.' The following year he became Treasurer in Tanganyika and remained in this position until 1933, having married his wife, Irene, in 1930. In 1933 he was appointed to the Order of St Michael and St George, recognising 'prominent and highly distinguished contributions overseas and in international affairs.' Between 1936 and 1942 he was Receiver General and Treasurer to the Bahamas and it was during this period that he became acquainted with the Duke and Duchess of Windsor.

In August 1940 the Duke and Duchess of Windsor arrived in Nassau, the capital of the Bahamas, following the Duke's appointment to Governor of the Bahamas. Winston Churchill, with agreement from the royal family, had installed the couple there amidst growing concerns for their possible Nazi sympathies. Some initial resistance to the appointment related somewhat to the Duke's inexperience and was a problem compounded by the fact that the majority of his most senior officials were also new to the colony. Robert Taylor, however, known to be a 'jolly, experienced man', played a reassuring role in the continuity of administration during this transition. Having been appointed four years earlier during the reign of Edward VIII, he was able to enlighten the Duke as to what lay in store for him. The two worked closely together until 1942 when Taylor was appointed Financial Secretary of Jamaica. The signed photograph and cufflinks included in this lot were gifts from the Duke and Duchess of Windsor to Robert Taylor during this time.

The Duke and Duchess remained in the Bahamas for the duration of the war. Robert Taylor returned to the islands as Controller of Exchange from 1947 until his retirement in 1956. He died in 1972.





98

A PEARL AND DIAMOND CRESCENT BROOCH, CIRCA 1890, the graduated row of half pearls with rose-cut diamond highlights, mounted in gold, (pearls untested), length 5.2cm. £150–£200



99

AN EMERALD AND DIAMOND CLUSTER RING, the mixed-cut emerald collet-set within a surround of old brilliant-cut diamonds, millegrain detailing throughout, total diamond weight approximately 0.55 carat, ring size N. £300–£500



100

A DIAMOND CLUSTER RING, 1891, the old brilliant-cut diamond cluster between pierced shoulders, Chester hallmark, total diamond weight approximately 1.00 carat, ring size R. £500–£700



101

A GEM-SET BANGLE, CIRCA 1900, the oval-cut green paste to an openwork knifewire bangle with black enamel detailing and rose-cut diamond accents, mounted in gold, inner diameter 53mm. £240–£300



102

A LATE 19TH CENTURY GEM-SET BANGLE, set to the front with cushion-shaped green doublets and old brilliant-cut diamonds, to an openwork knifewire hoop, mounted in gold, total diamond weight approximately 1.00 carat, inner dimensions 4.6 x 5.6cm. £600–£800



103

AN EARLY 20TH CENTURY SEED PEARL NECKLACE, the ropetwist chain leading to a seed pearl frontispiece of foliate design, with detachable drop en suite, mounted in gold, length 39.5cm.

£500–£700

104

TWO EARLY 20TH CENTURY FIVE STONE RINGS, comprising an 18ct gold ruby and diamond ring, Chester hallmark, together with an early 20th century diamond five stone ring, mounted in gold and platinum, total diamond weight approximately 0.40 carat, ring sizes L½ and K½ respectively.

£200–£300



105

TWO DIAMOND SINGLE STONE RINGS, each set with an old oval or brilliant-cut diamond, the first mounted in 18ct gold, Birmingham hallmark for 1868, the second stamped '18CT', total diamond weight approximately 0.80 carat, ring sizes M–P½.

£400–£600



106

THREE STICKPINS, comprising an antique ruby, emerald and diamond stick pin, mounted in silver and gold, with Austro-Hungarian assay mark, together with a stylised diamond-set shell and anchor example, first length 6.5cm.

£200–£300



107

A 9CT GOLD BP SHELL SERVICE PIN, with shell logo, Birmingham hallmark for 1991, length 36mm.

£100–£150





108

A PAIR OF EMERALD AND DIAMOND CLUSTER EAR STUDS, each oval mixed-cut emerald set within a surround of brilliant-cut diamonds, *total diamond weight approximately 0.40 carat, length 8.7mm.* £200–£300



109

A DIAMOND FIVE STONE RING, set with a graduated row of old brilliant-cut diamonds, stamped '18CT', *total diamond weight approximately 1.60 carats, ring size N.* £600–£800



110

A DIAMOND RING, set with three graduated old brilliant-cut diamonds, *total diamond weight approximately 0.90 carat, ring size L.* £200–£300



111

A DIAMOND RING, 1995, set with a brilliant-cut diamond between trios of similarly-cut diamonds, mounted in 18ct gold, London hallmark, *total diamond weight approximately 2.00 carats, ring size Q.* £800–£1,200



112

AN ANTIQUE FROG BROOCH, set throughout with circular-cut white pastes and with purple paste eyes, mounted in silver, French assay marks, *length 38mm.* £80–£120

113

AN EMERALD BEAD BRACELET, the four rows of graduated emerald beads leading to a pierced vari gem-set clasp, *length 19cm.* £400–£600





114 Y

A HARDSTONE BROOCH, realistically modelled as a holly sprig composed of *Corallium rubrum* drupes and nephrite leaves, stamped '585', length 7cm. £400–£600



115 Y

A PAIR OF HARDSTONE EAR CLIPS, realistically modelled as wild strawberries set with carved *Corallium rubrum* fruit and green hardstone leaf, stamped '14K', length 40mm. £400–£600



116

AN EMERALD AND DIAMOND CLUSTER RING, the step-cut emerald within a surround of brilliant and princess-cut diamonds, mounted in 18ct gold, maker's mark 'G.BROS', UK hallmark, total diamond weight approximately 1.50 carats, ring size L. £2,000–£3,000

To be sold on behalf of the International Liberty Association, Charity number 1160607.

117

A RUBY AND DIAMOND BRACELET, the bicoloured links channel-set with brilliant-cut diamonds between reeded terminals, with ruby cabochons between, stamped '14k', length 17.5cm. £1,200–£1,500





118

A MALACHITE BEAD NECKLACE, the uniform row of malachite beads, measuring approximately 15.3mm, to a bolt clasp, stamped '750', length 46cm. £400–£600



119

A DIAMOND DRESS RING, the crossover panels pavé-set with brilliant-cut diamonds and similarly-cut treatment black diamonds, total diamond weight very approximately 2.20 carats, ring size O. £1,000–£1,200



120

AN EMERALD AND DIAMOND RING, the tapered band set with three step-cut emeralds, within a surround pavé-set with brilliant-cut diamonds and similarly-cut diamonds of brown tint, (diamonds untested for natural colour), total diamond weight approximately 0.80 carat, ring size Q. £1,000–£1,500



121

A DIAMOND DRESS RING, the principal brilliant-cut diamond in a raised four-claw setting within a whorl of channel-set diamonds, stamped '585 14K', total diamond weight approximately 1.00 carat, ring size M½. £400–£600

122

A CULTURED PEARL NECKLACE, the graduated row of cultured pearls, measuring approximately 3.50–7.40mm, to a 9ct gold clasp with pierced star design set with rose-cut diamonds, UK hallmark (rubbed), length 52cm. £100–£150



123

A GREEN HARDSTONE BEAD NECKLACE, the polished beads suspending a disc-shaped pendant with carved Chinese character decoration, length 83.5cm, pendant diameter 5.7cm. £80-£100



124

TWO HARDSTONE PENDANTS, the first comprising a tiger's eye ground with applied profile of a lady wearing a diamond-set floral headdress, the whole within a beaded scalloped surround, mounted in 9ct gold, together with a nephrite zodiac pendant with applied Taurus bull motif, first with UK hallmark, second stamped '18ct', first length 6.5cm. £400-£600

125

THREE JADE DRESS RINGS, comprising a cluster ring set with vari-colour pear-shaped cabochons, a cabochon ring with stylised diamond set surmount, each stamped '585 14K', together with a jadeite and diamond cluster ring, spuriously stamped '18CT', (jadeite untested), ring sizes L. £200-£300



126

TWO JADE RINGS, each set with a jadeite cabochon, (jadeite untested), the mounts stamped '18K' and '14K' respectively, ring sizes O-P. £200-£300



127

AN ANTIQUE TURQUOISE AND DIAMOND CLUSTER RING, the oval turquoise cabochon within a surround of further turquoise cabochons and rose-cut diamonds, between shoulders set with a trio of rose-cut diamonds, to an openwork scroll hoop, mounted in silver and gold, indistinct assay marks, ring size Q. £600-£800



128

A 9CT GOLD RING, 1972, the broad band with applied textured cubes, London hallmark, indistinct maker's mark possibly 'LW', ring size P. £200–£260



129

A BLACK OPAL AND DIAMOND SET DRESS RING, the opal collet-set within a surround of brilliant-cut diamonds and applied bead and wirework decoration, total diamond weight approximately 0.55 carat, ring size S.

£1,000–£1,500

According to a PMI test on an XRF Analyzer the ring is testing as 17ct gold.



130

A DIAMOND BROOCH BY ANDREW GRIMA FOR HOOPER BOLTON, 1963, of abstract zig-zag form, with textured bead decoration throughout and a brilliant-cut diamond highlight, sponsor's mark 'H.B Ltd', London hallmark, length 45mm.

£1,000–£1,500

Provenance: Presented to the fashion model Marlene Honor by Andrew Grima in 1964 at the book launch of Graham Hughes' publication 'Modern Jewellery'.

Thence by descent.



Andrew Grima, Marlene Honor and Graham Hughes at the launch of Hughes' book "Modern Jewelry" in 1963.
© Grima Jewellery Limited



131

AN OPAL PENDANT BY JOHN NADAS, CIRCA 1970, the oval black opal cabochon, measuring 29 x 25mm, in an undulating textured mount, suspended from a similarly textured bar, signed 'NADAS', stamped '18CT', length 8.3cm. £2,600–£3,000

John Nadas was an Australian jewellery designer famed for his modernist creations. His shop was at 12 Rowe Street, Sydney.



132

A BOULDER OPAL PENDANT, CIRCA 1970, set with a D-shaped boulder opal, double-sided, in a textured surround and suspended from a ropetwist chain, clasp stamped '750', pendant unsigned, pendant length 35mm, chain length 59cm. £1,500–£2,000



133

A BOULDER OPAL BUTTERFLY PENDANT, CIRCA 1970, of stylised design with textured abdomen and thorax, the wings each set with a boulder opal slice, unsigned, length 5cm. £2,000–£3,000



134

AN 18CT GOLD DIAMOND BROOCH / PENDANT, 1973, the bicoloured brooch formed of wirework spokes each terminating in a flowerhead set with a single or brilliant-cut diamond, with similarly-set leaves to the centre, maker's mark 'CF', UK hallmark, *total diamond weight approximately 0.90 carat, length 5.5cm.*

£600–£800



135

A SYNTHETIC EMERALD DRESS RING, 1966, the synthetic emerald rough crystal within a tapered mount formed of polished 18ct gold rods, with brilliant-cut diamond highlights, London hallmark, maker's mark 'CMD', ring size O–P.

£600–£800

136

AN EMERALD AND DIAMOND BRACELET BY TABBAH, CIRCA 1970, the bicoloured strap formed of staggered and textured bars, set at intervals throughout with circular-cut emeralds and single-cut diamonds, signed, stamped '750', length 18cm.

£3,400–£4,000



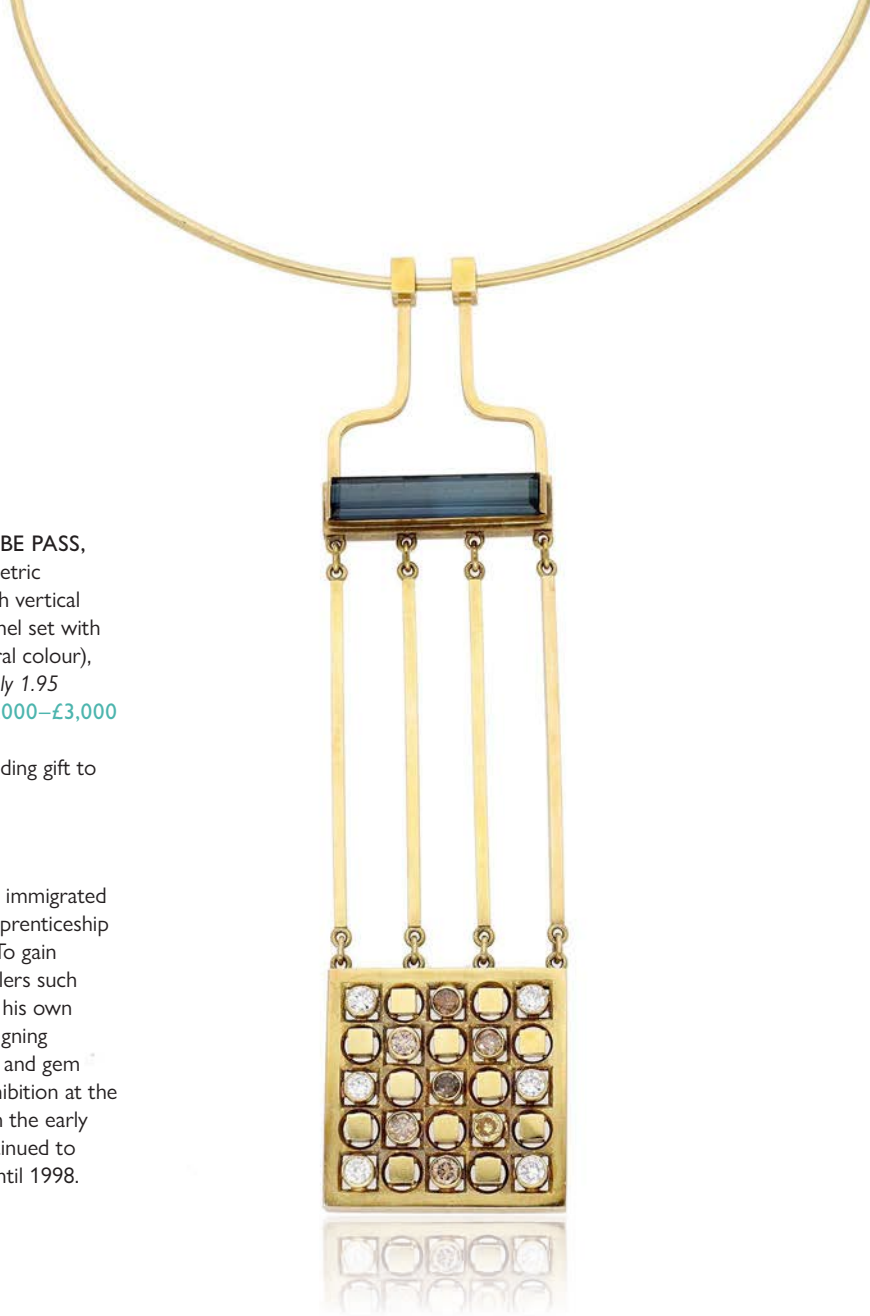
137

A SOUTH AFRICAN DIAMOND PENDANT BY ABE PASS, CIRCA 1967, the wirework collar suspending a geometric pendant incorporating a step-cut blue tourmaline, with vertical bars below, terminating in a pierced chequerboard panel set with vari-coloured diamonds, (diamonds untested for natural colour), stamped '18ct PASS', total diamond weight approximately 1.95 carats, length 24cm. £2,000–£3,000

Provenance: This necklace was commissioned as a wedding gift to the vendor in 1967.

Abe Pass

Abe Pass was born in Lithuania in 1926, and as a child immigrated with his parents to South Africa. He completed his apprenticeship as a goldsmith with Cooper's in Cape Town in 1945. To gain further experience, he worked with other artist jewellers such as Doug Saunders and Levitt's. In 1963 he established his own studio in the Groote Kerk building in Cape Town, designing individual jewellery commissions with precious metals and gem stones. In 1967 he contributed to a South African exhibition at the International Arts and Crafts Exhibition in Florence. In the early 1970s he lectured at Stellenbosch University and continued to exhibit his work in Cape Town and in Johannesburg until 1998.



138

AN 18CT GOLD FANCY-LINK BRACELET BY UNOERRE, CIRCA 1963, the double-row of textured links with polished connections and beaded accents, signed 'UNO-AR', Italian assay marks, Birmingham import marks, sponsor's mark, length 21.5cm. £800–£1,000





139

TWO ANTIQUE AQUAMARINE AND DIAMOND JEWELS, the gold stickpin terminating in a heart-shaped aquamarine and diamond cluster, together with a vari-cut aquamarine pendant necklace with diamond accents, *pin length 7cm.*

£300–£400



140

A COLLECTION OF FIVE UNMOUNTED DIAMONDS, *total diamond weight 1.69 carats. (5)*

£100–£150

Please note VAT at 20% is payable on the hammer price of this lot.



141

THREE GEM-SET RINGS AND A BROOCH, comprising a trinity ring with diamond highlights, stamped '750', an antique blue enamel and old cushion-cut diamond eternity ring, mounted in gold, an emerald eternity ring, and a silver basket brooch pavé-set with brilliant-cut diamonds, London hallmark, *total diamond weight approximately 1.90 carats, brooch length 40cm.*

£400–£600

142

TWO CULTURED PEARL NECKLACES, one graduated row, *measuring approximately 5.5–8.7mm*, with a sapphire cabochon and diamond clasp, together with a single uniform row, *measuring approximately 8.3mm*, first clasp stamped '750', *lengths 49cm and 54cm.*

£500–£700





143

A DIAMOND CROSS PENDANT, set throughout with princess-cut diamonds, suspended from a box-link chain, pendant and chain stamped '750', clasp stamped '925', total diamond weight approximately 1.30 carats, pendant length 28mm, chain length 45.5cm. £700-£900



144

AN EARLY 20TH CENTURY AQUAMARINE AND PEARL PENDANT NECKLACE, centred with a circular-cut aquamarine within a two row roundel setting, suspended from pearl and aquamarine-set links, to a fine trace-link back chain, mounted in platinum and gold, (pearls untested), length 47cm. £300-£400

145

AN 18CT GOLD SAPPHIRE AND DIAMOND CLUSTER RING, the oval mixed-cut sapphire claw-set within a surround of brilliant-cut diamonds, London hallmark, total diamond weight approximately 1.00 carat, ring size N. £300-£500



146

TWO DIAMOND RINGS, the first set with three brilliant-cut diamonds in platinum, the second set with a single brilliant-cut diamond, first with London hallmark for 2002, total diamond weight approximately 1.20 carats, ring sizes O and L½. £500-£700



147

A COLLECTION OF ANTIQUE STICKPINS, including various diamond and gem-set examples, depicting wishbones, horseshoes, flowerheads, etc. various lengths. (14) £300-£360





148

AN ART DECO DIAMOND PLAQUE BROOCH, of openwork design, set throughout with old brilliant-cut diamonds, mounted in platinum, *total diamond weight approximately 8.20 carats, length 6cm.* £1,500–£2,000



149

AN ART DECO DIAMOND BROOCH, the openwork plaque set with old brilliant-cut diamonds, mounted in platinum, *total diamond weight approximately 1.90 carats, length 35mm.* £400–£600



150

AN AQUAMARINE AND DIAMOND BROOCH, the cut cornered step-cut aquamarine within a surround of brilliant-cut diamonds, *length 25mm.* £1,200–£1,500



151

AN ART DECO DIAMOND BRACELET, the openwork panels set throughout with single-cut diamonds, mounted in platinum, French assay marks, *total diamond weight approximately 2.20 carats, length 17.5cm.* £1,500–£2,000



152

AN ART DECO AQUAMARINE AND DIAMOND BROOCH, CIRCA 1935, set with a pear-shaped aquamarine within an openwork plaque surround set with old brilliant and rose-cut diamonds, mounted in platinum, *total diamond weight approximately 3.40 carats, length 44mm.*

£2,600–£3,000



153

AN ART DECO DIAMOND DOUBLE CLIP BROOCH, of interlocking scroll design, set throughout with brilliant, single and step-cut diamonds, mounted in platinum, *total diamond weight approximately 2.90 carats, length 46mm.*

£1,500–£2,000



154

A DIAMOND DOUBLE CLIP BROOCH, CIRCA 1950, the interlocking scrolls set throughout with old brilliant, single and step-cut diamonds, *total diamond weight approximately 7.60 carats, length 6cm.*

£1,500–£2,000



155

A PAIR OF DIAMOND EARRINGS, the bicoloured bombé hearts set with a row of brilliant-cut diamonds to one side, stamped '750', Italian assay marks, length 16mm. £500–£700

156

A PAIR OF EARRINGS, the tricolour scrolls with reeded detailing, stamped '750', Italian assay mark, length 23mm. £240–£300



157

AN 18CT GOLD DIAMOND RING, collet-set to the front with a staggered row of marquise-cut diamonds, stamped '750', total diamond weight approximately 0.90 carat, ring size L½–M. £300–£500



158

A DIAMOND RING, set to the front with a staggered row of brilliant-cut diamonds, total diamond weight approximately 0.50 carat, ring size Q. £200–£300



159

A HORSE BRACELET, FRENCH, CIRCA 1970, the polished wood cuff with realistically modelled horse head terminal with cabochon hardstone eyes and hoop to the mouth, mounted in 18ct gold, French assay marks, partial UK import mark, sponsor's mark for Sannit & Stein, inner diameter 6cm. £1,000–£1,500

160

A PAIR OF PLATINUM EARRINGS BY CATHERINE MARTIN, 1999, the meshwork leaves of bicolour design and with scrolling tendril surmounts, maker's mark, UK hallmark, length 37mm. £400-£600

A designer goldsmith and professional musician and singer, Catherine Martin was the first westerner to graduate in **Kumihimo**, the traditional Japanese art of braiding. She incorporates this ancient Asian art into her jewellery designs, her work incorporating the painstaking weaving of fine gold wire by hand, producing jewels of great intricacy and fluidity.

Catherine is London based, and has pieces in the V & A Collections, Royal Museum of Scotland, Birmingham Museum, Museum of Art and Design in New York, and Boston and other private and public collections.



161

A DIAMOND FIVE STONE RING, the bicoloured mount with brushed finish and set with a graduated row of old cushion-cut diamonds, total diamond weight approximately 0.60 carat, ring size M. £300-£500

According to a PMI test on an XRF Analyzer the ring is testing as 18ct gold.



162

A TIGER'S EYE AND DIAMOND DRESS RING, the arched bezel set with two shaped tiger's eye cabochons spaced by brilliant-cut diamond highlights, stamped '585 14K', ring size L½. £100-£120



163

A ZIRCON AND DIAMOND DRESS RING, the oval mixed-cut greenish-brown zircon claw-set between pairs of brilliant-cut diamonds, stamped '585', ring size K½. £150-£200



164

A SILVER 'CHAINE D'ANCRE' BRACELET BY HERMÈS, 2007, with T-bar terminal, signed, maker's mark 'HGB', UK hallmark, French import mark, length 22cm. £600-£800





165

A CULTURED PEARL AND DIAMOND PENDANT, the cultured pearl drop beneath a brilliant-cut diamond cluster surmount, the whole suspended by an unassociated curb-link chain, *total diamond weight approximately 1.15 carats, length 35mm.* £500–£700



166

A 9CT GOLD AND ZIRCON BROOCH, 1961, the stylised bicolour spray set with circular-cut blue zircons, Birmingham hallmark, *length 6cm.* £300–£500

This lot is being sold on behalf of the West Sussex charity Friends of Acquired Brain Injury Survivors (FABIS). The charity provides free or subsidised holidays and social events for acquired brain injury survivors. For more information see www.fabischarity.com. Charity number: 1198982.



167

A BLUE TOPAZ AND DIAMOND RING, the sugarloaf blue topaz to a shaped hoop with brilliant-cut diamond highlights to either side, stamped '18K', *ring size N.* £600–£800



168

A DIAMOND DRESS RING, of wraparound design, set with a cushion-shaped rose-cut black diamond, between shoulders pavé-set with diamonds of various yellow tints, (diamonds untested for natural colours), stamped '750', *principal diamond measuring approximately 13.6 x 11.2 x 5.3mm, remaining total diamond weight very approximately 1.30 carats, ring size L–M.* £1,200–£1,500

169

TWO PASTE BRACELETS, the first of flowerhead design, the second formed of pierced rectangular plaques, both set throughout with circular-cut pastes, second stamped '935' for Argentium silver, *lengths 18cm.* £100–£150





170

A LAPIS LAZULI BEAD NECKLACE, the single row of lapis lazuli beads, measuring approximately 10.2mm, to a reeded magnetic clasp, accompanied by 12 loose beads, clasp stamped '750', Italian assay mark, length 44cm. **£200-£300**

171

A SAPPHIRE AND DIAMOND DRESS RING, the openwork ring composed of lozenge-shaped diamond set panels and centred with an oval-cut sapphire, stamped 14K, ring size O. **£300-£400**



172

A LAPIS LAZULI AND DIAMOND RING, the angular shaped ring with satin finish and inset with a heart-shaped lapis lazuli plaque and single-cut diamond highlights, stamped '585 14K', ring size M. **£200-£300**



173

A LAPIS LAZULI AND DIAMOND DRESS RING, the polished lapis lazuli hoop with applied reeded accents and single-cut diamond highlights, stamped '14k 585', ring size L. **£200-£300**





174

A DIAMOND PENDANT, CIRCA 1900, the heart-shaped pendant of whiplash scroll design and set throughout with old brilliant-cut diamonds, mounted in silver and gold, possibly Swedish assay mark, total diamond weight approximately 2.00 carats, length 5cm. £600–£800



175

AN EARLY 20TH CENTURY DIAMOND CLUSTER RING, the hexagonal plaque set throughout with old brilliant-cut diamonds, mounted in platinum and gold, stamped (rubbed), numbered, total diamond weight approximately 0.55 carat, ring size M–N. £200–£300



176

AN EARLY 19TH CENTURY PEARL RING, set with a graduated row of half-pearls, between bifurcated scroll and shell shoulders, closed-back settings, mounted in gold, (pearls untested), ring size P. £150–£200



177

A LATE 19TH CENTURY DIAMOND RING, diagonally-set with three old brilliant-cut diamonds, between similarly-set undulating shoulders, mounted in gold, stamped '18'; total diamond weight approximately 1.30 carats, ring size M. £1,000–£1,500



178

A DIAMOND FIVE STONE RING, set with a graduated row of old brilliant-cut diamonds, with rose-cut diamond highlights between, to a carved scroll gallery, stamped '18C', total diamond weight approximately 1.30 carats, ring size H. £600–£800



179

A DIAMOND STAR JEWEL, CIRCA 1890, set throughout with old brilliant-cut diamonds, mounted in silver and gold, total diamond weight approximately 2.05 carats, length 30mm. £500–£700



180

A THREE ROW CULTURED PEARL CHOKER NECKLACE, the cultured pearls measuring approximately 6.5mm, to a late 19th century diamond cluster clasp, centred with a later cultured pearl, gold and silver mounted, *total diamond weight approximately 1.60 carats, length 38.5cm.* £1,000–£1,200

The necklace has recently been restrung.

181

A LATE 19TH CENTURY ARROW AND QUIVER BROOCH, the crossed arrow and quiver with swirling ribbon detail, set throughout with old brilliant and rose-cut diamonds, silver and gold mounted, *length 47mm.* £300–£400



182

A LATE 19TH CENTURY DIAMOND AND PEARL BROOCH, the knifewire arrow centred with a heart beneath a coronet, set throughout with old brilliant-cut diamonds, with pearl highlights, silver and gold mounted, (pearls untested), *total diamond weight approximately 0.70 carat, length 5.4cm.* £600–£800

183

A BELLE ÉPOQUE DIAMOND CHOKER, FRENCH, CIRCA 1910, the three openwork sliders each depicting an ear of wheat with knifewire awns, set throughout with rose-cut diamonds, to a velvet band with old brilliant-cut diamond-set clasp, mounted in platinum and gold, numbered '1073', French assay marks, partial maker's mark possibly 'W&F' or 'W&E', *choker length 31cm.* £500–£700

In the ancient world wheat symbolised prosperity and abundance and was associated with Demeter, goddess of agriculture and fertility. In the early 1800s, inspired by earlier Greek and Etruscan jewels, the motif reappeared in the Napoleonic court. Chaumet created the wheat sheaf tiara for Empress Marie-Louise, Napoleon's second wife, in 1811 and continued to use the motif thereafter. Later in the century ears of wheat also appeared in the revival designs of jewellers such as Castellani and Fontenay. In 1901 Cartier first created a wheat-ear aigrette before designing a series of wheat-ear tiaras and jewels.

Literature:

Nadelhoffer, H., 'Cartier', Thames and Hudson, 1984.





184

AN 18CT GOLD AND DIAMOND DRESS RING, the tapered band set to the front with a triple row of graduated brilliant and baguette-cut diamonds, Sheffield hallmark, *total diamond weight approximately 3.30 carats, ring size N-N½.*

£1,500–£2,000



185

A RUBY AND DIAMOND DRESS RING, the bombé cluster set with an oval-cut ruby within a surround of brilliant and baguette-cut diamonds, stamped '18K' and '750', *total diamond weight approximately 1.40 carats, ring size L.*

£1,500–£2,000



186

A GEM-SET DRESS RING, set with a brilliant-cut treated black diamond, with calibré-cut emeralds, rubies and diamonds to one side and with a demi-lune of brilliant-cut diamonds to the other, stamped '750', *principal black diamond weight approximately 1.50 carats, ring size approximately T.*

£1,000–£1,500



187

A DIAMOND RING, the front set with a square of brilliant-cut diamonds, between reeded shoulders, stamped '750', *total diamond weight approximately 1.50 carats, ring size U.*

£700–£900



188

A GEM-SET DRESS RING, set with an oval-cut green tourmaline within a surround of brilliant-cut diamonds, the gallery and shoulders set with circular-cut rubies and brilliant-cut diamonds of brown tint, mounted in 18ct gold, (diamonds untested for natural colour), UK hallmark, *total diamond weight approximately 2.20 carats, ring size O.*

£1,200–£1,500

189

A BLACK OPAL AND GEM-SET PENDANT, the pear-shaped black opal cabochon to a fanned surround set throughout with vari-cut diamonds, calibre-cut citrines and onyx highlights, the whole suspended by a cable-link chain, pendant length 35mm. £2,000–£3,000



190

A MID 20TH CENTURY FLOWER BROOCH, with reeded petals and central cluster set with circular-cut sapphires, length 48mm. £500–£700



According to a PMI test on an XRF Analyzer the brooch is testing as 18ct gold.

191

A MID 20TH CENTURY SAPPHIRE FLOWER CLIP, the polished petals centred with a cluster of circular and cushion-cut sapphires, maker's mark 'PD', stamped '750', length approximately 35mm. £500–£600



192

A GINKGO LEAF BROOCH, realistically modelled and textured, stamped '750', maker's mark 'WL', length 6.3cm. £400–£600





193

A **SAPPHIRE AND DIAMOND PENDANT**, the pear-sapphire within a surround of brilliant-cut diamonds, suspended from a woven chain, chain stamped '585', total diamond weight approximately 1.00 carat, pendant length including bale 25mm, chain length 43cm. **£700–£900**



194

A **PAIR OF ROCK CRYSTAL AND GEM-SET EAR PENDANTS**, the frosted rock crystal panels with gadrooned finish and centred with a spinel and diamond cluster between similarly-set marquise-shaped connections, stamped 'PT950', total diamond weight approximately 0.38 carat, length 35mm. **£800–£1,000**



195

A **COLOURED DIAMOND RING**, 2007, the brilliant-cut diamond of pink tint, weighing 0.24 carat, in tension setting, mounted in platinum, London hallmark, sponsor's mark 'PRS' for Paul Spurgeon, ring size 1½. **£1,500–£2,000**

Accompanied by a report from GIA stating that the diamond is a natural Fancy Intense Purplish Pink colour. Report number 14313206, dated 5 May 2005.



196

A **SAPPHIRE AND DIAMOND RING**, the oval-cut sapphire within a cluster surround of brilliant and baguette-cut diamonds, mounted in 18ct gold, total diamond weight approximately 0.50 carat, ring size N. **£200–£300**



197

A **DIAMOND ETERNITY RING**, set throughout with old brilliant-cut diamonds, total diamond weight approximately 0.75 carat, ring size L–M. **£300–£400**

198

A **ROCK CRYSTAL AND GEM-SET BRACELET**, the frosted rock crystal panels with gadrooned finish and centred with a sapphire and diamond cluster, with similarly-set marquise-shaped connections throughout, stamped 'PT950', total diamond weight approximately 1.11 carats, length 18.5cm. **£1,500–£2,000**



199

A **SAPPHIRE AND DIAMOND PENDANT ON CHAIN**, the central cabochon sapphire within an openwork diamond set petal design, set with brilliant-cut diamonds, and circular-cut sapphires, stamped 'd0.41ct 2.08ct' indicating diamond and sapphire weights, chain stamped '585', *pendant length 31mm.* £800–£1,000



200

A **PAIR OF SAPPHIRE AND DIAMOND EAR PENDANTS**, of triple cluster design, stamped '1.35ct d0.347' indicating sapphire and diamond weights for each pendant, *length 26mm.* £600–£800



201

AN **AQUAMARINE AND DIAMOND PENDANT**, the pear-shaped aquamarine claw-set beneath an old brilliant-cut diamond surmount, *length 25mm.* £150–£200



202

A **SAPPHIRE AND DIAMOND BRACELET**, the herringbone bracelet chain spaced by a combination of oval mixed-cut sapphires and brilliant-cut diamonds, stamped '750', *total diamond weight approximately 1.45 carats, length 18cm.* £1,000–£1,500



203

A **CULTURED PEARL NECKLACE**, the single row of cultured pearls to a polished boule clasp, stamped '18K750', *length 46cm.* £100–£150





204

AN INDIAN GEM-SET FRINGE NECKLACE, the articulated collar composed of pierced foliate panels and set throughout with vari-cut rubies, emeralds and white gemstones, with cultured pearl highlights and similarly-set back chain, (composite), length 33cm.

£1,000–£2,000



205

A SMALL GROUP OF INDIAN JEWELS, comprising enamel, pearl, ruby and diamond-set panel ring, a cultured pearl and ruby bombé pendant/brooch and ring, a red garnet-topped doublet and rose-cut diamond cluster brooch/pendant and two gem-set bird brooches, (pearls untested), various sizes. (6)

£500–£700

206

FIVE 19TH CENTURY INDIAN 'PERTABGARB' OVAL PANELS, CIRCA 1865, of typical design, the pierced goldwork depicting mounted huntsmen amidst animals and birds, overlaid to a green glass ground, mounted to cream card, largest width 31mm, smallest 7mm.

£120–£150



207

A 19TH CENTURY INDIAN GEM-SET AND ENAMEL PENDANT, the double-sided crescent and foliate panel, one side set with lasqué-cut diamonds and calibré-cut red stones in closed foil-back settings, with polychrome enamel decoration verso, the whole suspending a fringe of emerald bead drops, (two stones deficient), numbered '18306224', length 6.6cm. £800–£1,200



208

A PAIR OF INDIAN GEM-SET AND ENAMEL EAR PENDANTS, the double-sided ear pendants set to the front with a rose-cut diamonds and calibré-cut rubies, the reverse decorated with polychrome enamel, length 35mm. £400–£600



209

TWO PAIRS OF INDIAN GEM-SET EARRINGS, the first of hemi-spherical pendant form, pavé-set with graduated ruby cabochons, with seed pearl tassels below and enamelled mounts; the second of smaller pierced hemi-spherical form, set with half-pearls, rubies and emeralds, with a cultured pearl drop fringe and cultured pearl surmount, (pearls untested), first diameter 30.5mm. £600–£800



210

A GEM-SET DRESS RING, the tapered band set with an oval-cut emerald with a pear-shaped pink sapphire to either side, the surround set with brilliant-cut treated black diamonds, stamped '750', ring size N. £600–£800

211

AN INDIAN GOLD AND GEM-SET BANGLE, set with vari-cut emeralds, rubies and diamonds in closed back settings, inner dimensions 5.5 x 6cm. £600–£800

According to a PMI test on an XRF Analyzer the bangle is testing as 21ct gold.





212

A GARNET TORSADE, the triple row of garnet beads spaced by polished roundels and leading to a boule-shaped clasp, stamped '585', length 44cm. £150-£200



213

THREE ANTIQUE GARNET JEWELS, comprising a pair of Georgian garnet and seed pearl clusters converted to earrings, a garnet and pearl brooch with applied diamond stars, and a ring of similar design, all mounted in gold, (pearls untested), earring length 27mm, brooch length 6.2cm, ring size L-M.

£400-£600

214

A GARNET AND SEED PEARL STICKPIN AND EAR CLIPS, set with an oval mixed-cut garnet within a cultured pearl surround, the ear clips en suite, (stick pin converted), clips stamped '585', stickpin length 6.8cm.

£200-£300



215

THREE ANTIQUE STICKPINS, comprising a hawk's eye and rose-cut diamond cluster, a rose-cut diamond and pearl cluster and a further pearl example, all mounted in gold, (pearls untested), various lengths. (3)

£300-£400





216

A THREE ROW CULTURED PEARL NECKLACE, the three uniform strands of cultured pearls to an early 19th century garnet flowerhead clasp, mounted in gold, necklace length 41cm. £200–£300

Provenance: Formerly the Property of Field Marshal Birdwood, thence by family descent.



217

FOUR PAIRS OF EAR STUDS, comprising a pair of 9ct gold seed pearl and red stone floral studs, together with two more gem-set examples and a pair of plain polished knots, first length 20mm.

£200–£300

218

A CULTURED PEARL BRACELET, the articulated strap composed of pierced panels with faceted finish and cultured pearl highlights, length 21cm.

£600–£800

According to a PMI test on an XRF Analyzer the pendant is testing as 17ct gold.





219

A CHARM BRACELET, suspending various charms, to include a Maltese cross, stamped 'C18', a ski and pole, stamped '750', an 18ct gold throne, a 14ct gold seahorse, etc., clasp stamped '9ct', length 21cm. £700-£800



220

A CHARM BRACELET, suspending various charms including a 9ct gold lucky horseshoe, carriage, dachshund, painter's palette by Cropp & Farr and various other charms, bracelet stamped '9CT', length 18.5cm. £700-£800

221

A 9CT GOLD CHARM BRACELET, the curb-link bracelet with heart-shaped padlock clasp and suspending charms including a George V sovereign and half sovereign, a St. Christopher pendant, a champagne bucket, a gypsy wagon and a bird cage, UK hallmarks, length 17cm. £2,000-£2,600



222

THREE 9CT GOLD CHARMS, comprising a bicycle with moving pedals, handlebars and wheels; a dog kennel opening to reveal a Scottish terrier with bowl and bone; and an articulated fish charm; all hallmarked, various lengths. £340-£400

223

A LONG CHAIN NECKLACE, of box-link design, clasp stamped '9CT', length 154cm. £1,200-£1,500

According to a PMI test on an XRF Analyzer the chain is testing as 9ct gold.



224

A GOLD BRACELET, the vari-shaped panels with textured ground and polished Chinese character decoration, length 20.5cm. £300–£400

According to a PMI test on an XRF Analyzer the bracelet is testing as 18ct gold.



225

AN EARLY 20TH CENTURY PEARL AND DIAMOND BRACELET, the gold curb-links alternately set with old brilliant-cut diamonds and pearls, (pearls untested), total diamond weight approximately 0.80 carat, length 18.5cm. £600–£800

226

A LATE 19TH CENTURY CURB-LINK BRACELET, the hollow curb-link chain with heart-shaped padlock clasp and engraved decoration, stamped '9C' throughout, maker's mark 'CDB', probably for Charles Daniel Broughton, length 19cm. £260–£300



227

A 19TH CENTURY GARNET BRACELET, FRENCH, the silver gilt strap of brick-link design, each link with triangular profile and set throughout with garnet cabochons, the reverse with engraved foliate design, French assay marks, rubbed maker's mark, length 19cm. £200–£300



EARLY RINGS



228

A ROMAN GOLD RING, 3RD CENTURY AD, the flat hoop expanding at the shoulders to a rectangular flat bezel, engraved with the letters 'VFT' (*Utere Felix*), translating from Latin as 'Good luck to the user', weight 3.8gm, ring size approximately F. £200–£300

From excavated examples discovered in a military context, it has been suggested that these rings were to give good fortune in the afterlife.

According to a PMI text on the XRF Analyzer, the ring testing as 22.24ct gold.



229

A MEDIEVAL GOLD POSY RING, CIRCA 1350-1450, the flat gold band engraved to the exterior 'EN BON AN' in black letter script, the words interspersed with floral sprays, traces of white enamel remain to the lettering, weight 1.74gm, ring size L. £2,000–£3,000

Provenance: This ring was discovered by a metal detectorist in March 2024. It is recorded on the Portable Antiquities Scheme database ref: DUR-13DFA3 and disclaimed as Treasure, ref: 2024-T450.



230

A MEDIEVAL ICONOGRAPHIC RING DEPICTING ST. CATHERINE, CIRCA 1400-1500, the oblong bezel with iconographic depiction of St. Catherine in draped robes, accompanied by her wheel, the shoulders and band of diagonally twisted decoration with beaded detail, the shoulders with details of five petalled flowers, weight 2.7gm, ring size M. £2,000–£3,000

St Catherine of Alexandria was a popular saint in England, particularly as the patroness of girls and of learning. By tradition, she was a Christian saint and virgin, martyred in the early 4th century at the hands of the Emperor Maxentius. According to her hagiography, she was both a princess and a noted scholar. At the age of around 14 she became a Christian, converting hundreds of people to Christianity, and was martyred at aged 18.

Maxentius had tried to win Catherine over by proposing marriage, which Catherine refused, declaring her spouse to be Jesus Christ, to whom she had consecrated her virginity. The furious emperor condemned Catherine to death on a spiked breaking wheel, but at her touch it shattered - the wheel became her identifying symbol. The emperor then ordered her to be beheaded.

During the Middle Ages, the virgin martyrs, particularly St Catherine, were the focus of devotion for women and regarded as models of feminine Christian behaviour.

231

A UNICORN GOLD SEAL RING, 15TH–16TH CENTURY, the heavy ring with round bezel intaglio carved with a unicorn rampant within a corded border, the interior of the band inscribed in Medieval French gothic script 'Le voyr', weight 15.3gm, ring size Q. £8,000–£10,000

Provenance: From a private family collection, circa 1970, and thence by family descent.

The Medieval French inscription 'le voyr' or 'le voir' translates as 'see it/him', probably alluding to the unicorn.

Whilst a titled gentleman's signet ring bore his family crest or coat of arms, by the late Medieval and post Medieval periods, signet rings were in wider use often engraved with para-heraldic devices.

"The image graven on the bezel needed only to be a visual representation or device of an individual; something that was enough to create a distinctive, identifiable sign... Many rings with non heraldic devices attempt in part to make reference to true heraldry... This could in turn elevate a man's status socially and this was one means of defining his masculinity". (Awais-Dean, N.)

Of all the mythical beasts, the unicorn is one of the most elusive and secretive: its essential characteristics being the single horn, the magical quality of repelling poison, its fierceness and fleetness of foot and its ability to elude capture. They are said to represent purity, innocence and truth. In the Middle Ages the unicorn was sometimes used to symbolise the death and sacrifice of Christ, whilst in the 13th century a more romantic imagery was popular: Richard de Furnival, in *Bestoire d'Amour*, referred to the unicorn as "symbolising the lover, beguiled by the virgin who represents his beloved".

In his work on *Mythical Beasts*, John Cherry notes that where the unicorn is depicted in Medieval art "one cannot be sure whether it is the triumph of religious or secular love that is being celebrated. It is this ambiguity that makes the unicorn one of the most fascinating mythical beasts."

Literature:

Awais-Dean, N., *Bejewelled: Men and Jewellery in Tudor and Jacobean England*, British Museum Press, pub. 2017.

Cherry, J., *Mythical Beasts*, British Museum Press, pub. 1995.



THE WARNER 'GRESHAM GRASSHOPPER' SEAL RING



232

AN IMPORTANT 16TH CENTURY GOLD SIGNET RING, CIRCA 1560–1575

the oval crystal bezel intaglio carved with the coat of arms of **Warner**, with tinted foil behind to colour: Or a chevron between three boars' heads couped sable, in a closed gold mount with tapered shoulders, the underside of the bezel engraved with a grasshopper in green enamel, weight 14.8gm, ring size Q. £10,000-£15,000

Provenance: This, until now unrecorded ring, is one of a series of 'Gresham Grasshopper' seal rings, gifted by the great Tudor financier Sir Thomas Gresham between the years 1560-1575. This ring was inherited through a private family from the 19th century, thence by descent, until circa 2010.

Sir Thomas Gresham (1519–1579)

The Gresham family were an old Norfolk family, merchants and financiers by trade. Sir John Gresham (1495-1556) worked for Henry VIII, Cardinal Wolsey and Thomas Cromwell.

The young Thomas Gresham, following in his family's footsteps, served his apprenticeship as a merchant under his uncle Sir John Gresham, dealing principally in woollen cloth and other luxury textiles such as silks and velvets. However his true talents lay elsewhere, like his father Sir Richard Gresham, in making deals in foreign exchange and arranging finance. His father "*taught him some of the secrets of exchange dealing in Lombard Street and Antwerp*" (Guy, J., p.13). By the 1530s Thomas began working and training within the family business, by this time the Gresham family firm were the largest shippers trading out of London. In 1543, at the age of just 24, Thomas was, again following family tradition, admitted as a liveryman of the Mercers' Company, leaving England later that year to pursue business in the Low Countries. Quickly earning respect for his adept and skilful play of the financial markets, his trade took him regularly to Antwerp, the principal trading port for cloth in the European markets, and by the 15th century the "*commercial capital of Northern Europe*" (Guy, J., p.19). Here he began

to undertake financial arrangements on behalf of Henry VIII, including smuggling over £30,000 of gold and silver coins into Bologne to pay the king's mercenaries based in Antwerp.



Thomas Gresham by Anthonis Mor, circa 1560–1565, oil on canvas (Rijksmuseum, Amsterdam)

A shrewd and astute businessman, Thomas Gresham skilfully kept out of the religious fever sweeping back and forth across 16th century Europe and this determined neutrality allowed him to maintain his role as financial agent to the Crown, not only to Henry VIII, but Edward IV, Mary and finally Elizabeth I, negotiating foreign and domestic loans, advising on financial matters, and manipulating the exchange rates to allow him to restructure and reduce the crown debt. Under Elizabeth he was also appointed as ambassador to the Court of Margaret of Parma, Governor of Netherlands.

In 1565 Thomas Gresham agreed to finance and oversee the construction of the Royal Exchange, largely modelled on the Antwerp Bourse, on a site between Lombard Street and Cornhill, a grand and appropriate venue for him and his fellow merchants to conduct their business. After his death in 1579, in his will Thomas Gresham left the Royal Exchange in trust, to be split between the Corporation of London and the Mercers' Company but both parties being thereafter required to fund Gresham College, the first institution of higher education in London.



Mark Warner (d.1583/1584)

This ring bears the arms of the family of Warner. A potential candidate for these arms was Sir Edward Warner (1511–1565) of Polstead Hall and Little Plumstead in the County of Norfolk, but as Sir Edward bore for his arms: 'Per bend indented sable and argent', this cannot be the case. It is therefore believed that this ring belonged to Mark Warner, of All Hallows, Lombard Street. (Ref: Beacon Genealogical and Heraldic Research).

Mark Warner is recorded as a cloth merchant and a member of the parish of All Hallows, Lombard Street, in the City of London. He was twice married at the church, first to Elizabeth Farthing in 1554 and then Judith Grymson in 1579, and was buried there in January 1583/4. His will (National Archives ref: PROB 11/66/333) lists two daughters, Cicelye and Elizabeth, and a son, John.

The Warner family owned property at Stroud Green in Middlesex but had long been associated with Lombard Street. Mark's grandfather John and his father Richard both contributed to the building of All Hallows church.

Mark Warner was a member of the Worshipful Company of Drapers, being apprenticed in 1543 and called to the livery in 1552. By 1554 he had become a freeman, in this year he took his first apprentice, William Bocher, followed by a second apprentice James Cranfyld, prior to 1558.

Like Gresham, Warner was not just involved in the cloth trade but also in finance. His name is included in a list of known insurers in London, in business between 1559–1573. (National Archives ref: HCA 24/39).

At this time, high risks were associated with the safe passage of goods by sea. Marine insurance was provided by 'Lombard Street' custom (although not yet legislated for). Collectively groups of merchants based around Lombard Street would each loan against part of the cargo of a ship, the loan being dismissed if the vessel floundered, thus insuring the vessel and spreading the risk of overseas trade amongst the merchant community. When, in 1575, the Chamber of Assurances was set up to register insurance contacts, it was Gresham's long time agent Richard Chandler who was given the position and an office inside the Royal Exchange. The quantity and value of overseas deals negotiated by Gresham must surely have necessitated elaborate insurance deals.

Both being cloth merchants, involved in finance and insurance, and both residing and working in Lombard Street, Warner and Gresham's paths would undoubtedly have crossed.



The Grasshopper Rings

This form of signet ring, with an intaglio carved rock crystal bezel, foiled behind to tint the colours of the coat of arms (allowing impressions to be taken without exposing the colours to hot wax), first appeared in Germany in the early 16th century (Princely Magnificence, cat no. 4 and 7). By the second half of the 16th century this style of ring had made its way to England where it became "the status symbol *'par excellence'*". (D. Scarisbrick, 1993, p.48).

Through the third quarter of the 16th century Thomas Gresham gifted a series of these rings to acquaintances/business associates, each with a foiled crystal bezel displaying their coat of arms, with an enamelled grasshopper to the underside of the bezel.

The grasshopper was the family crest of the Gresham family, probably derived from their Norman ancestry, being descended from the De Gresses. After becoming citizens of England, the French prefix 'DE;' was dropped, and to distinguish them as landowners, the word 'HAM' may have been added, and under this modified name, the family coat of arms granted prior to 1460. The Gresham family coat of arms are: 'Argent a chevron ermine between three mullets pierced sable', with a crest: 'On a mound a grasshopper vert'. These arms are recorded in the Heralds Visitations for the County of Norfolk, 1563 and for the City of London, 1568; these pedigrees indicate the arms were granted to John Gresham (died 1460), the 2x great grandfather of Thomas.

Nine such 'Gresham grasshopper' rings are recorded. The Warner ring, until now undiscovered, brings this total to ten.



The recorded examples are:

The Sir William Fleetwood ring, in the British Museum (ref: AF.636).

Sir William Fleetwood (c.1525–1594) was recorder of London from 1571–1591.

The Sir Richard Lee ring, in the Victoria and Albert Museum (ref: M249-1928).

Sir Richard Lee (c.1501–1575) was a prominent military engineer and architect.

The Gabriel Goodman ring, in the St. Fagans National Museum of History, Cardiff.

The Very Reverend Gabriel Goodman (1528–1601) was Dean of Westminster from 1561.

The Edmund Tremayne ring, in the collections of the former Martins Bank (now Barclay's Bank) which had its principal London office at 68 Lombard Street, a building known as 'The Grasshopper' after its previous owner, Thomas Gresham.

Edmund Tremayne (c.1525–1582) was the clerk of the privy council under Elizabeth I.

The Jacques Wingfield ring, sold at Christie's, 19 December 1977.

Jacques Wingfield (prior to 1469–1525) was constable of Dublin Castle and Master of Ordnance in Ireland, and under the protection of William Cecil.

The Sir Robert Taylor ring, sold at Christie's, 9 May 1978, exh. Princely Magnificence, V&A, 1980-81, cat. no. 30.

Sir Robert Taylor (died 1596) worked as a teller at the exchequer.

The Woodhouse ring

This ring was discovered on the Gresham estate in Budsale, Suffolk and was presented to the Society of Antiquaries on 23 September 1742.

The Charles Herbert ring

A handwritten note references an enquiry from a woman in Australia who had a "grasshopper ring bearing the arms of Herbert, said to have been given to Charles Herbert Esq. father of Sir Edw. Herbert, Attorney General to Charles I", written on a copy of J. W. Hemp's article, in the records of the British Museum.

The William Naylor ring, in a private collection.

Published in 2002: *Postscript to: Bejewelled: Men and Jewellery in Tudor and Jacobean England*, by Natasha Awais-Dean: referenced William Naylor (d. 1571) as one of the six clerks to the Chancery and was granted arms in 1564.

The slight variation in the design of the rings, particularly the form and orientation of the grasshopper, indicates that they were probably made by several different goldsmiths over a period of years. Two of the rings are dated to the bezel alongside the coat of arms (ie. the Woodhouse ring, dated 1557 and the Taylor ring, 1575).

There do not appear to be any contemporary written accounts relating to the gifting of the rings. No particular event, common interest or business venture can be established to link the various recipients of the rings. Theories for the gifted rings have been put forward by noted historians but none with conclusive or universally accepted views.

Awais-Dean suggests that the rings may have acted as a kind of surety from Gresham that the owners of the rings were trusted by him and thereby would be considered trustworthy to other associates. She references Thomas Heywood's early 17th century play 'If You Know Me Not, You Know Nobody', where Timothy willingly hands over to John the sum of one hundred pounds, despite having never met him before, to pay off a debt to Thomas Gresham - what prompts him to do so is the production of Gresham's signet ring: "I would not have trusted you, John, without so sufficient a discharge".

John Guy's biography of Gresham includes the interesting comment "Gresham...tended only to befriend those who could profit him sooner or later", (Guy, J., p.164) and also referencing "He (Thomas) cultivated what would later become a formidable talent for calculating just how valuable or inexpensive a gift needed to be to assure the precise level of service or favour he expected in return." (Guy, J., 2019, p.41).

One could assume that rather than gifts offered by Gresham in thanks for past services or kindnesses, it would appear more likely that those chosen to receive such expensive rings were individuals whose future potential could be of benefit to him. The hidden grasshopper crest to the interior of each ring would serve as a pertinent reminder as to exactly where the recipient's future loyalties should lie.

With grateful thanks to John Guy, Penelope Fussell (archivist at the Drapers Company) and John Tunesi of Liongam, Beacon Genealogical and Heraldic Research, for their kind assistance with research.

Literature:

Awais-Dean, N., *The Coat of Arms, the journal of the Heraldry Society*, 3rd Series, Vol .VIII, Part 1, pub. 2012

Awais-Dean, N., *Bejewelled: Men and Jewellery in Tudor and Jacobean England*, Research Publication 209, pub. British Museum Press, 2017

Guy, J., *Gresham's Law, the life and world of Queen Elizabeth I's banker*, pub. Profile Books, pub. 2019

Hemp, W. J., *The Goodman and other grasshopper rings*, *The Antiquaries Journal*, vol. 5, 26 February 1925

Rider, C. M., *Our City and Chamber of London: The relationship between the City of London and the Crown in the reigns of Edward VI and Mary, 1547–1558*, PhD thesis, pub. University of Bangor, 1992

Scarlsbrick, D., *Rings: Symbols of Wealth, Power and Affection*, pub. Thames & Hudson, pub. 1993

V & A, *Princely Magnificence, Court Jewels of the Renaissance, 1500–1630*, pub. 1980





233

A 17TH CENTURY SILVER SWIVEL SEAL MATRIX, the oval double sided swivel bezel bearing to one side the intaglio crest of a demi-eagle with wings expanded, to the reverse a coat of arms - *argent on a chevron or between three boars heads*; the swivel mount with C-scroll details, and circular hoop surmount, *length 16.5mm, weight 9.1gm.* £200–£300



234

A 17TH CENTURY GOLD POSY RING, the plain gold band inscribed to the interior in italic script 'I SWARE TO THEE, STILL TRUE TO BEE', indistinct maker's mark, *ring size N.* £500–£700

Provenance: From a private collection.



235

A POST MEDIEVAL GOLD FEDE POSY RING, CIRCA 1600-1750, the gold band cast with a bezel of clasped hands between triple banded cuffs, the interior inscribed in italic script 'A FRENDR AT NEED DOTR GOOLD EXCED' [sic], and bearing maker's mark 'DA' in a square punch, *ring size O.* £500–£700

Provenance: This ring was found by a metal detectorist in Appledore, near Ashford, Kent in 2023. It is recorded on the Portable Antiquities Scheme database, ref: KENT-EC39E2, and has been disclaimed as Treasure.



236

A 17TH CENTURY GARNET AND ENAMEL 'LOVE' RING, the narrow band of scrolled panels in white enamel with gold lettering reading 'SAGE ET DISCRET', centred with heart-shaped garnet in closed-back pinched-collet setting, mounted in gold, ring size K. £1,000–£1,500

The French proverb '*Jamais homme sage et discret ne révèle à femme son secret*' translates as: 'A wise and discreet man never reveals his secret to a woman'.

237

AN EARLY 19TH CENTURY ENAMELLED MOURNING RING, the broad flat band with milled and plain black enamel borders, the central white enamel displaying gold lettering: 'Eliz : Jane . Latham . Ob : 31 . Oct . 1802 : Ae 24', London hallmark for 1802, maker's mark 'WH', ring size O. £500–£700



238

A LATE 19TH CENTURY MEMORIAL BAND RING, the narrow band with rounded interior and milled borders, the central white enamel displaying gold lettering: 'The . Rev'd Geo : Fowler . Ob : 20 . July . 1775 . Ae 28', indistinct maker's mark, ring size K–L. £200–£400

Provenance: George Fowler was born in 1747 in South Kyme, Lincolnshire, was admitted to Christ's College, Cambridge in 1772 and lived in Cambridge until his death. He was buried and is commemorated at the Church of St. Andrew the Great, Cambridge.

239

AN EARLY 19TH CENTURY GOTHIC REVIVAL MEMORIAL RING, the quatrefoil bezel supporting a small hardstone cameo of a forget-me-not, between shoulders modelled as a pair of hands, the interior of the band inscribed 'John Morley, Ob. 12 Aug. 1830, At 2Ys 3Mos', mounted in gold, size J. £200–£300



240

AN ANTIQUE GOLD RING, CIRCA 1835, the central trefoil flowerhead with a glazed hairwork panel to the centre and a similar larger panel verso, between cast foliate shoulders, ring size J. £100–£150



241

A MID 19TH CENTURY HAIRWORK, ENAMEL AND HALF-PEARL MEMORIAL RING, the band of plaited hairwork between raised borders, the front bearing black enamel Greek key decoration, with a half-pearl set scroll, the interior inscribed 'A. M. from her father, 1st Jan 1867', (pearls untested), ring size N. £150–£200



242

A 19TH CENTURY MEMORIAL RING, the faceted and engraved band with a swivel panel revealing plaited hairwork, stamped '14p', ring size L–M. £150–£200



243

TWO ANTIQUE MOURNING RINGS, each with black enamel, seed pearl and foliate motif decoration, central and reverse glazed compartments respectively, mounted in gold, (two seed pearls deficient), ring size P and O. £200–£260



244

AN ENAMEL AND DIAMOND MEMORIAL RING, CIRCA 1870, the domed tapered band with diagonal stripes of black enamel and trios of old-cut diamonds, inscribed 'Maria Elizabeth Pippet, Obt 4th May 1874', mounted in gold, indistinct hallmark, maker's mark 'T.E.', ring size Q. £300–£400

Literature:

Davies, Verlaine: *Rings 1800–1910*, a study of English and related designs, see an illustration of this ring in fig 105, page 47.



245

TWO EARLY 19TH CENTURY MEMORIAL RINGS, the first with glazed hairwork panel within a cluster surround and shoulders of pinched collet set round-cut black glass stones, interior inscribed 'John Haslehurst, Obt 12 April 1821, Aet 26', the second a swivel ring, the rectangular orange agate and glazed hairwork swivel panel between openwork shoulders, ring sizes V and U respectively. £200–£300

246

A 9CT GOLD NECKLACE AND THREE ROW BRACELET CHAIN, the byzantine-link chains with London import marks, lengths 79.5 and 19.5cm. £2,400–£2,600





Partially illustrated

247

A LATE 19TH CENTURY BROOCH AND EARRING SUITE, the gold suite of tiered target design, together with two small early 19th century brooches, including a lozenge-shaped topaz brooch and memorial brooch, *cased brooch diameter 30mm*. (3) £150–£200



248

AN ANTIQUE ROCK CRYSTAL BROOCH / PENDANT, of girandole design, the pierced pendant set throughout with vari-cut rock crystals in closed foil-backed settings, mounted in gold, (later converted), *length 5cm*. £200–£300

249

OF NELSON INTEREST: AN EARLY 19TH CENTURY HARDSTONE CAMEO BROOCH, the oval agate cameo depicting the profile of Admiral Lord Nelson, within a gold filigree surround, *length 33mm*. £200–£300



250

AN EGYPTIAN REVIVAL ENAMELLED RING, CIRCA 1870, the central cartouche bearing the hieroglyphs of owl, lion and viper, between lotus flower shoulders, decorated in polychrome enamel, mounted in gold, *ring size N*. £600–£800

Provenance: In Egyptian hieroglyphs, an oval cartouche with a line at one end tangent to it indicates the text enclosed a royal name; the oval itself was believed to be a symbol of protection, and the line below further reinforced the royal significance: it is an adaptation of a Shen ring. The hieroglyphs of the owl, lion and viper represent the initials M, L and F.

Literature:

Davies, Verlaine: *Rings 1800–1910*, a study of English and related designs, see illustration of this ring in fig 99. page 46



251

A PEARL STICKPIN AND A BOW BROOCH, the stick pin with square-shaped terminal and centred with a half pearl, the brooch with textured finish and black enamel decoration throughout, (pearl untested), *first length 5.4cm*. £200–£300

According to a PMI test on an XRF Analyzer the stick pin is testing as 16ct gold and the brooch is testing as 18ct gold.



252

A **DIAMOND CLUSTER JEWEL**, the old brilliant-cut diamond, weighing *2.75 carats*, within a surround of similarly-cut diamonds, diameter *13mm*. **£4,000–£6,000**



253

A **CULTURED PEARL AND DIAMOND CLUSTER RING**, the cultured pearl, measuring *approximately 11.3mm*, within a lozenge-shaped surround of brilliant-cut diamonds, illegibly stamped, partially numbered '1442**', total diamond weight *approximately 2.55 carats*, ring size *S*. **£800–£1,200**



254

A **CULTURED PEARL AND DIAMOND RING**, the cultured pearl, measuring *approximately 11.6mm*, within a wraparound surround of marquise and tapered baguette-cut diamonds, total diamond weight *approximately 1.50 carats*, ring size *M*. **£1,000–£1,500**



255

A CULTURED PEARL NECKLACE, the uniform cultured pearls, measuring approximately 12.5–13mm, to a spherical pavé-set brilliant-cut diamond clasp, stamped '750', length 84cm.

£3,000–£5,000



256

AN 18CT GOLD 'TOUCH WOOD' PENDANT BY CARTIER, CIRCA 1980, designed as a lucky charm pendant, the wooden baton with bicolour gold cap of trinity design, signed, stamped '750', numbered '121655', French assay marks, length 6cm. £300-£500

From the 'Toucher du Bois' Collection.



257

A PAIR OF MID 20TH CENTURY HEMATITE CUFFLINKS BY CARTIER, the oval hematite cabochons collet-set to closed back gold mounts, signed 'Cartier London', numbered '11.9328', panel length 16mm. £200-£300

According to a PMI test on an XRF Analyzer the cufflinks are testing as 9ct gold.



258

A PAIR OF 'SANTOS DE CARTIER' CUFFLINKS BY CARTIER, the rectangular bicolour panels with screwhead detail and boule terminals, signed 'Cartier', numbered 'D29830', panel length 19mm.

£300-£500



259

A PAIR OF MID 20TH CENTURY CUFFLINKS, FRENCH, of angular stirrup design, the polished columns with hexagonal cross section and push button release, French assay marks, stamped 'DEPOSE OVB', terminal length 20mm. £500-£700



260

A PAIR OF 18CT GOLD 'TRINITY' EARRINGS BY CARTIER, the concentric triple hoops with crossover details, with loop fittings above, signed, numbered 'F08925', with maker's case, length 6.3cm. £2,000–£3,000

261

A CITRINE RING BY BOUCHERON, the reeded citrine cabochon in a tapering bombé mount of similar design, signed, French assay mark, maker's mark, stamped '750', numbered 'B0095714', ring size O. £1,000–£1,500



262

A DIAMOND RING BY CARTIER, set with a brilliant-cut diamond, mounted in 18ct gold, signed, numbered 'RO8574', London hallmark for 1996, maker's case, diamond weight approximately 0.60 carat, ring size L. £800–£1,200



263 Y

AN 18CT GOLD HEMATITE AND CORAL RING BY CHAUMET, of crossover design, each terminal set with a reeded coral or hematite bead, with diamond-set collars below, on twist shank, signed 'CHAUMET PARIS', maker's mark 'JC', French assay mark, stamped 'OR750', ring size M. £900–£1,200



264

A PAIR OF GEM-SET EAR CLIPS BY RODNEY RAYNER, of circular domed form, set with amethyst cabochons, brilliant-cut diamonds and circular-cut pink gemstones, mounted in 18ct gold, signed, London hallmark, maker's mark, length 21mm.

£1,200–£1,500



265

A GEM-SET DRESS RING BY JAHHEL, set with an amethyst cabochon with an oval-cut pink tourmaline to either side, each within a surround of brilliant-cut diamonds, to a hinged hoop, signed, stamped '750', ring size M.

£1,200–£1,500



266

AN AMETHYST RING, 1985, the circular-cut amethyst in an openwork basket setting, mounted in 18ct gold, London hallmark, ring size L.

£400–£600



267

TWO GEM-SET RINGS, comprising an opal triplet and diamond ring and a synthetic pink gemstone ring, stamped '14KT' and '9C', ring sizes O and M.

£120–£150



268

AN AMETHYST DRESS RING, set with an oval-cut amethyst, ring size P½.

£160–£200



269

A 19TH CENTURY AMETHYST NECKLACE AND WITH THREE AMETHYST JEWELS, the 19th century rivière set with oval-cut amethysts in gold, together an amethyst and seed pearl pendant, a pair of triple heart and cultured pearl earrings, and a cluster ring, ring size R. (4) £1,000–£1,500



270

A GEM-SET BROOCH, the stylised bouquet set throughout with vari-cut emeralds, sapphires, pink sapphires, yellow sapphires, pearls, etc., (pearls untested), length 5cm. £600–£800



271

A 19TH CENTURY AMETHYST BROOCH AND BRACELET, the brooch comprising an oval mixed-cut amethyst collet-set within a beaded, cannetille surround with red and green enamel highlights, together with a bracelet set throughout with similarly-cut amethysts, mounted in gold, bracelet length 18.5cm. £600–£800





272

A PAIR OF DIAMOND EAR STUDS, each brilliant-cut diamond in a bicoloured square-shaped mount with brushed satin finish, total *diamond weight* approximately 2.30 carats, length 11.2mm. £3,000–£5,000



273

A DIAMOND SINGLE STONE RING, the bicoloured ring set with a brilliant-cut diamond within a cushion-shaped mount, to a platinum band, brushed satin finish throughout, Sheffield hallmarks, *diamond weight* approximately 1.25 carats, ring size R½. £2,400–£3,000



274

AN 18CT GOLD AND DIAMOND SUITE BY MAPPIN AND WEBB, the necklace designed as a double row of mesh-link chains with diamond-set cross motifs at intervals, the bracelet and earrings en suite, maker's mark, London hallmark, maker's cases, (one diamond deficient) *total diamond weight approximately 1.65 carats, necklace length 42cm.*

£3,000—£5,000



275

A PAIR OF GEM-SET CUFFLINKS, each of the ropetwist mounts collet-set with a circular-cut synthetic colour change corundum, terminal diameter 19mm. £500–£700

According to a PMI test on an XRF Analyzer the cufflinks are testing as 17ct gold.



276

A DIAMOND SINGLE STONE RING, the brilliant-cut diamond between crossover shoulders, mounted in 18ct gold, UK hallmark, diamond weight approximately 2.05 carats, ring size M. £3,000–£5,000



277

A DIAMOND SINGLE STONE RING, set with a brilliant-cut diamond in a rubover setting to a tapered hoop, mounted in 18ct gold, London hallmark for 1986, diamond weight approximately 1.20 carats, ring size P. £2,000–£3,000



278

A DIAMOND THREE STONE RING, the central brilliant-cut diamond, weighing 2.17 carats, between two similarly-cut diamonds, to a raised sculptural mount, stamped '18ct', remaining total diamond weight approximately 0.50 carat, ring size R. £2,600–£3,000



279

A DIAMOND BANGLE, of flattened rectangular form, inlaid to the front with a graduated row of old cushion-shaped diamonds, total diamond weight approximately 1.20 carats, inner diameter 6.3cm. £1,000–£1,500

According to a PMI test on an XRF Analyzer the bangle is testing as 9ct gold.



280

AN 18CT GOLD COMBINATION NECKLACE AND BRACELET SUITE, designed as a continuous series of cylindrical and spherical links, European convention mark, indistinct maker's mark, lengths 42.5cm and 20cm. £3,000–£4,000

281

A FANCY-LINK BRACELET, CIRCA 1970, formed of interlocking textured links, stamped '750'; Italian assay mark, maker's mark for Bottazzo Gino di Massimiliano, length 20cm. £2,400–£3,000





282

A LATE 19TH CENTURY SAPPHIRE AND DIAMOND RING, the graduated circular-cut sapphires spaced by pairs of old brilliant-cut diamonds, to a pierced scrollwork gallery, stamped 18CT, ring size M½. £300–£500

This lot is being sold on behalf of the West Sussex charity Friends of Acquired Brain Injury Survivors (FABIS). The charity provides free or subsidised holidays and social events for acquired brain injury survivors. For more information see www.fabischarity.com. Charity number: 1198982.



283

A LATE 19TH CENTURY SAPPHIRE RING, set with circular and cushion-shaped sapphires above a carved scroll gallery, mounted in gold, stamped '*8CT' (rubbed), ring size approximately S. £800–£1,200

According to a verbal report from GCS the sapphires are of Basaltic origin with no indications of heating. Verbal report number 5785-2208.



284

A SAPPHIRE AND DIAMOND FIVE STONE RING, 1895, the two circular-cut sapphires spaced by three old brilliant-cut diamonds, mounted in 18ct gold, maker's mark 'WGM', Birmingham hallmark, numbered, total diamond weight approximately 1.30 carats, ring size P½. £2,000–£3,000



285

A LATE 19TH CENTURY SAPPHIRE AND DIAMOND BANGLE, set to the front with oval mixed-cut sapphires and old brilliant-cut diamonds, to an openwork knifewire hoop, mounted in gold, total diamond weight approximately 1.50 carats, inner dimensions 4.6 x 5.5cm. £2,000–£3,000



286

A SAPPHIRE AND DIAMOND BROOCH, CIRCA 1960, designed as a flower, set with brilliant-cut diamonds to the centre and circular-cut sapphires to the petals, the stems set with step-cut diamonds, fitted case by Garrard & Co., total diamond weight approximately 2.55 carats, length 45mm.

£2,000–£3,000

287

A DIAMOND DRESS RING, FRENCH, RETAILED BY MOUSSAIEFF, of bombé crossover design, each side set with an oval-cut diamond, within a surround of brilliant-cut diamonds, to a reeded hoop, French assay mark, indistinct maker's mark, retailer's stamp 'CLM', stamped '750', total principal diamond weight approximately 2.70 carats, remaining total diamond weight approximately 5.40 carats, ring size L. £5,000–£7,000





288

A CULTURED PEARL AND DIAMOND NECKLACE, the two uniform rows of cultured pearls leading to a flowerhead clasp pavé-set with brilliant-cut diamonds, total diamond weight approximately 2.30 carats, length 41cm.

£500-£700



289

A DIAMOND RING AND EARRING SUITE, of flowerhead design, set throughout with brilliant-cut diamonds, stamped '750', total diamond weight approximately 0.90 carat, earring length 18mm, ring size M-N.

£700-£900

290

A DIAMOND LINE BRACELET, set with a continuous row of brilliant-cut diamonds, mounted in 18ct gold, partial UK hallmark, total diamond weight approximately 5.00 carats, length 19.5cm.

£2,000-£3,000



291

A PAIR OF CULTURED PEARL AND DIAMOND EAR PENDANTS, the cluster surmounts set with pear, marquise and baguette-cut diamonds, suspending an articulated row of baguette and brilliant-cut diamonds, each terminating in a cultured pearl drop, total diamond weight approximately 3.00 carats, length 45mm. £1,500–£2,000



292

A MID 20TH CENTURY DIAMOND DRESS RING, set with a brilliant-cut diamond within a radiating surround of baguette-cut diamonds, between scrolled shoulders set with further brilliant-cut diamonds, to a reeded shank, principal diamond approximately 1.30 carats, ring size P. £1,200–£1,500

293

A CITRINE AND DIAMOND DRESS RING, the oval mixed-cut citrine claw-set to a pierced bombé mount of whorl design set throughout with brilliant-cut diamonds, (one diamond deficient), total diamond weight approximately 2.65 carats, ring size J–K. £800–£1,000



294

A DIAMOND BRACELET / WATCH, CIRCA 1950, the centre set with cluster of brilliant and marquise-cut diamonds, opening to reveal a circular watch dial, between step-cut diamond lugs and to a tapered strap set with further brilliant and step-cut diamonds, movement signed 'ELOGA', case stamped '100 IRIDIUM / 900 PLATINUM', total diamond weight approximately 7.30 carats, length 17.5cm. £2,000–£3,000

295

A DIAMOND KNOT BROOCH, the entwined ribbon set with graduated brilliant-cut and single-cut diamonds, with vari-cut diamond accents, total diamond weight approximately 2.60 carats, length 50mm. £600–£800





296

AN EARLY 20TH CENTURY PEARL AND DIAMOND BAR BROOCH, the circllet of old brilliant-cut diamonds with a pearl to either side, mounted in platinum and gold, stamped '18CT&PT', (pearls untested), *total diamond weight approximately 2.90 carats, length 6.7cm.* **£1,200–£1,500**



297

AN EARLY 20TH CENTURY DIAMOND BAR BROOCH, set with a graduated row old brilliant and single-cut diamonds within a millegrain border, mounted platinum and gold, *total diamond weight approximately 1.40 carats, length 5.5cm.* **£400–£600**

298

A DIAMOND JEWEL BY CARTIER, CIRCA 1950, the pierced dome with central cluster of brilliant-cut diamonds, with similarly-set arches below and outer trilliant-cut diamonds, mounted in platinum, later mounted as a ring, partial signature for 'Cartier London' (interrupted), maker's case, *total diamond weight approximately 4.50 carats, ring size N½.* **£3,000–£4,000**





299

A PAIR OF DIAMOND EARRINGS, each claw set with two cushion-cut diamonds, *the first weighing 1.92 carats and 1.01 carats below, the second weighing 2.18 carats and 1.08 carats below, length 18mm.* **£6,000–£8,000**

According to a verbal report from GCS the two principal diamonds grade as:
2.18 carats, K colour, SI2 clarity. Verbal report number 5785-2209.
1.92 carats, J colour, SI2 clarity. Verbal report number 5785-2210.



300

A DIAMOND RING, set with seven oval-cut diamonds, mounted in platinum, UK hallmark, maker's mark for Pragnell, *total diamond weight approximately 2.35 carats, ring size Q-R.* £1,500–£2,000



301

A GEM-SET DAY AND NIGHT RING, channel-set with square-cut rubies and sapphires, the swivel half-hoops set with single-cut diamonds, *total diamond weight approximately 0.30 carat, ring size K.* £400–£600



302

A DIAMOND DRESS RING, CIRCA 1940, of odeonesque design, set to the front with old brilliant-cut diamonds between borders of square-cut rubies, stamped '18CT&PLAT', *total diamond weight approximately 1.25 carats, ring size R-S.* £500–£700



303

A DIAMOND DRESS RING, CIRCA 1970, the abstract cluster set with four brilliant-cut diamonds within a surround of baguette-cut diamonds, to a textured band, stamped '18CT', *total diamond weight approximately 1.60 carats, ring size P.* £500–£700



304

A DIAMOND SPRAY BROOCH, CIRCA 1950, set with old brilliant and rose-cut diamonds, with polished wire and ropetwist detailing, *total diamond weight approximately 0.50 carat, length 28mm.* £100–£200

According to a PMI test on an XRF Analyzer the brooch is testing as 14ct gold.



305

A PAIR OF DIAMOND EAR PENDANTS, each tassel formed of three articulated rows of brilliant-cut diamonds, signed 'by Ronco', Italian assay mark, stamped '750', total diamond weight approximately 6.20 carats, length 45mm. £1,200–£1,500

306

A MID 20TH CENTURY EMERALD AND DIAMOND BROOCH, set with a step-cut emerald with an old brilliant-cut diamond to either side, between scrolls of similarly-cut diamonds, total diamond weight approximately 2.40 carats, length 45mm. £700–£900



307

AN ALEXANDRITE RING, the cushion-shaped alexandrite to a bicoloured and bifurcated mount, stamped '750', ring size P–Q. £3,000–£5,000

Accompanied by a report from GCS stating that the alexandrite is of Indian origin with no indications of heating. Report number 5758-2044.



308

A PEARL AND DIAMOND CONVERTIBLE JEWEL, CIRCA 1890, the flowerhead cluster set throughout with old brilliant, cushion and rose-cut diamonds, with a bouton-shaped pearl to the centre, mounted in silver and gold, accompanied by a diamond-set bale, brooch and clasp fittings, (pearl untested), *total diamond weight approximately 4.05 carats, length including bale 43mm.*

£1,500–£2,000



309

A DIAMOND SPRAY BROOCH, converted from a late 19th century jewel, set throughout with old brilliant and rose-cut diamonds, *total diamond weight approximately 3.20 carats, length 7.5cm.*

£1,200–£1,500



310

A DIAMOND THREE STONE RING, set with an old brilliant-cut diamond, *weighing 2.23 carats*, with a similarly-cut diamond to either side, *weighing 1.00 and 1.03 carats*, with single-cut diamond highlights between and above a scrollwork gallery, mounted in 18ct gold, London hallmark, *ring size I–J.*

£6,000–£7,000



311

A CULTURED PEARL NECKLACE WITH A LATE 19TH CENTURY DIAMOND CLASP, the three rows of cultured pearls to a detachable cluster clasp, set with an old brilliant cut diamond, weighing 2.93 carats, within a target surround set with similarly-cut diamonds, mounted in silver and gold, remaining total diamond weight approximately 6.00 carats, length 49cm. £7,000-£10,000

According to a verbal report from GCS, the principal diamond is J colour, SI1 clarity. Verbal report number 5785-1552.



312

A DIAMOND RING, the old brilliant-cut diamond between fan-shaped shoulders set with tapered baguette and square-shaped diamonds, stamped 'PT', principal diamond weight approximately 1.70 carats, ring size P-Q.

£1,500-£2,000



313

A DIAMOND CRUCIFORM RING, CIRCA 1930, set with old brilliant-cut diamonds, stamped '18CT' and 'PLAT', numbered '1134', principal diamond approximately 1.00 carat, remaining total diamond weight approximately 1.75 carats, ring size N-O.

£1,000-£1,500



314

A LATE 19TH CENTURY SAPPHIRE AND DIAMOND RING, the marquise-shaped panel set throughout with circular-cut sapphires and old brilliant-cut diamonds, between fluted shoulders, mounted in gold, total diamond weight approximately 1.20 carats, ring size N-O.

£900-£1,200

315

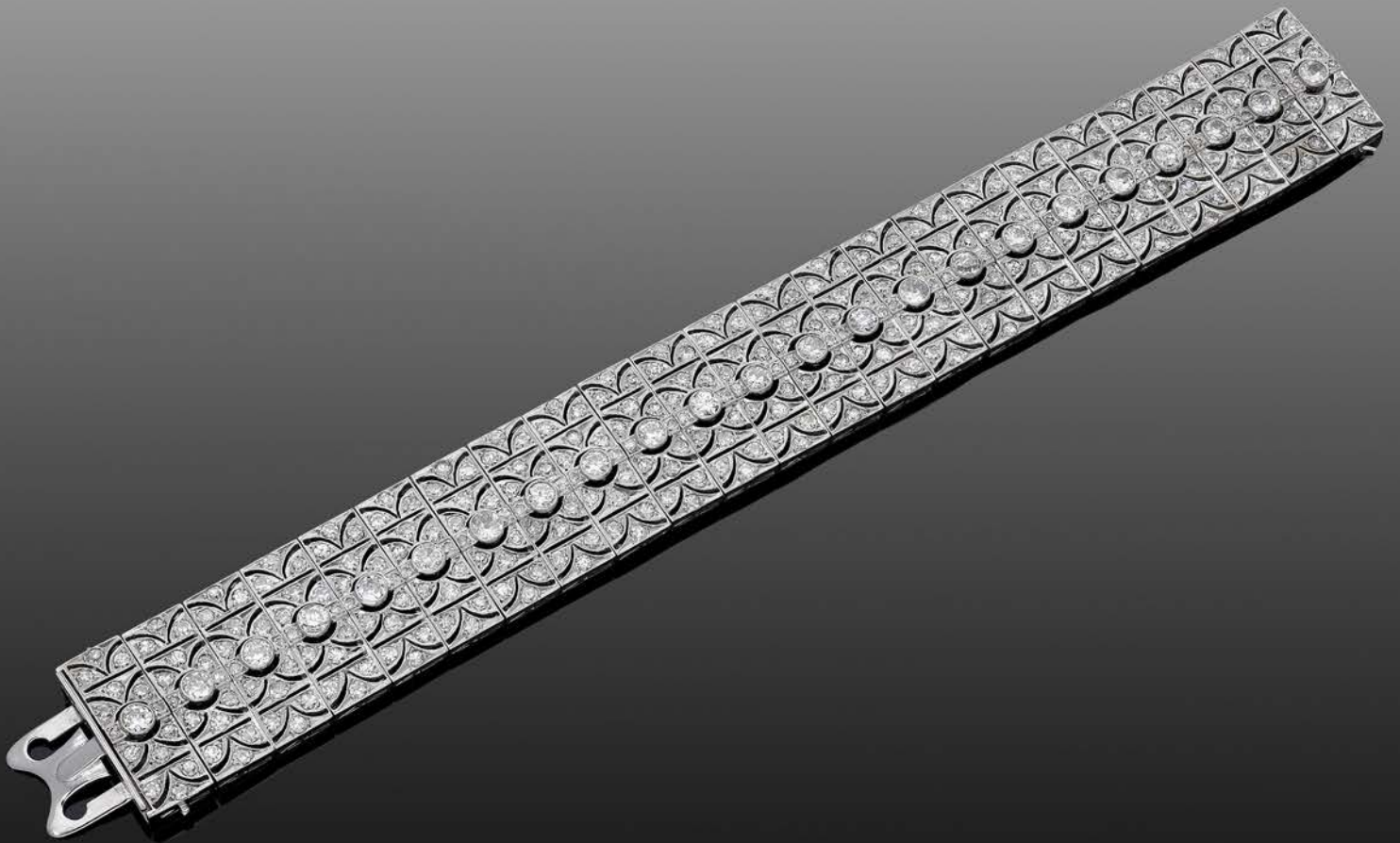
A PAIR OF DIAMOND EARRINGS, each old-cut diamond, weighing 1.96 and 2.02 carats, claw-cut and suspended from a wire hook, length 20mm. £4,000–£6,000

According to a verbal report from GCS the diamond weighing 1.96 carats is I colour, VS2 clarity and the diamond weighing 2.02 carats is J colour, SI1 clarity. Verbal report numbers 5785-2042 and 5785-2043



316

A LATE 19TH CENTURY DIAMOND BANGLE, set to the front with a graduated row of old brilliant-cut diamonds, to a carved scroll gallery, mounted in silver and gold, total diamond weight approximately 6.70 carats, inner diameter 5.7cm. £3,000–£4,000



317

AN ART DECO DIAMOND BRACELET, the articulated strap with pierced scallop decoration and set throughout with old brilliant and single-cut diamonds, mounted in platinum, *total diamond weight approximately 11.50 carats, length 17.6cm.*

£5,000–£7,000



318

A DIAMOND SINGLE STONE RING, the cushion-shaped diamond, weighing 2.98 carats, between tapered shoulders set with single-cut diamonds, stamped 'PLATINUM', ring size I. **£8,000–£12,000**

Accompanied by a report from GCS stating that the diamond is F colour and VS2 clarity. Report number 5785-1895, dated 9 April 2025.



319

A RUBY AND DIAMOND SPRAY BROOCH, CIRCA 1950, the baguette-cut diamond stem issuing a bouquet of pear-shaped rubies with brilliant-cut diamond highlights, one leaf set with further brilliant-cut diamonds, the other of openwork design and set with graduated baguette-cut diamonds, unsigned, fitted case by Garrard & Co. Ltd., total diamond weight very approximately 4.50 carats, length 6.3cm. £3,000–£5,000

According to a verbal report from GCS, a selection of the rubies were tested and found to be of Burma (Mogok) origin with no indications of heating. Verbal report number 5785-1417.



320

A DIAMOND SINGLE STONE RING, the transitional-cut diamond, weighing 4.70 carats, between shoulders set with princess-cut diamonds, mounted in platinum, UK hallmark, retailer's signature 'Pragnell', ring size R. **£15,000–£20,000**

Accompanied by a report from GCS stating that the diamond is K colour and VS2 clarity. Report number 5785-1551.



321

AN ART DECO ONYX AND DIAMOND BROOCH, of scalloped outline, the central onyx plaque with starburst carving and inset with a trio of transitional-cut diamonds, the whole within a similarly-set diamond and onyx surround with millegrain detail throughout, mounted in platinum, case by Carrington & Co., total diamond weight approximately 1.00 carat, length 43mm. **£600–£800**

322

A PAIR OF GOLD AND ENAMEL EAR CLIPS, converted from a 19th century jewel, the pierced quatrefoil clips with monochrome enamel and bead decoration, together with a pair of antique tapered drops of similar design, mounted in gold, (one drop damaged), possibly Swiss, ear clip diameter 18mm. (2) **£400–£600**



Partially illustrated



323

A DIAMOND THREE STONE RING, set with old brilliant and cushion-shaped diamonds, stamped '18CT', total diamond weight approximately 1.25 carats, ring size M. **£300–£500**



324

A HESSONITE GARNET AND DIAMOND RING, the two garnets spaced by pairs of old brilliant-cut diamonds, stamped '18ct', total diamond weight approximately 0.20 carat, ring size M. **£500–£600**

325

A MID 19TH CENTURY GOLD AND ENAMEL BRACELET, the articulated strap composed of overlapping curved panels with scrolled blue and white polychrome enamel decoration throughout, indistinct assay marks, stamped '56', length 17.5cm. **£1,200–£1,500**



326

A COLLECTION OF JEWELLERY, to include a 9ct gold ring engraved 'BB', a diamond three stone ring, mounted in 18ct gold, a diamond crossover ring, stamped '9CT', etc., *various sizes*. (7)
£1,000–£1,200

327

A COLLECTION OF JEWELLERY, to include four necklace chains, a 9ct gold gem-set ring etc., *various stamps and dimensions*. (7)
£1,200–£1,500

328

FOUR GEM-SET RINGS, comprising a mid 20th century sapphire and diamond cluster ring, an 18ct gold and diamond five stone ring, a gold mounted antique pearl and hardstone memorial ring, (one pearl deficient), and a diamond single stone ring, stamped '18CT PLAT', (pearl untested), *total diamond weight approximately 1.75 carats, various sizes*.
£500–£700

329

A SMALL COLLECTION OF GOLD JEWELLERY, to include three bangles, two bracelets and a trace-link chain, bangles with UK hallmarks for 9ct gold, two bracelets stamped '9CT' and '9K', *various dimensions*.
£1,500–£2,000

According to a PMI test on an XRF Analyzer the trace-link chain is testing as 9ct gold.

330

THREE 19TH CENTURY JEWELS, comprising a garnet and seed pearl ring, mounted in 18ct gold, Chester hallmark, a gold memorial brooch with glazed compartment within pearl surround, and an amethyst and seed pearl brooch, mounted in gold closed-back settings, (clasp deficient), *various lengths*.
£300–£500

331

A SMALL COLLECTION OF JEWELLERY, comprising a two-row baton bracelet, a cultured pearl bracelet, a 9ct gold horseshoe bracelet and a 9ct gold cross pendant suspended from a curb-link chain, first stamped '375', *various lengths*.
£700–£800

332

FOUR ANTIQUE GOLD AND GEM-SET RINGS, comprising a seven stone sapphire and diamond ring, a five stone emerald and diamond ring, a chrysoberyl and ruby ring (one ruby deficient), and a five stone diamond ring, Birmingham hallmarks, *total diamond weight approximately 0.40 carat, ring sizes L–P½*.
£500–£600

333

A COLLECTION OF JEWELLERY, to include a cultured pearl necklace, stamped '585', a diamond brooch, stamped '585', a sapphire and diamond crossover ring, a sapphire and diamond cluster pendant, a faceted onyx bead necklace, clasp stamped '18K', signed 'BECKMANN', etc., *various lengths*. (Quantity) **£200–£300**

334

A COLLECTION OF ANTIQUE BROOCHES, to include a gold octagonal brooch with star and scroll decoration and set with seed pearls, circa 1900, French, together with a mid 19th century garnet brooch with glazed compartment verso, a scarf clip, etc., the French brooch with assay mark and maker's mark for Charles Bourdin, *various lengths*. (6) **£300–£500**

335

A COLLECTION OF JEWELLERY, comprising two pairs of silver and cultured pearl cufflinks, two cultured pearl studs, a cultured pearl flowerhead brooch, all by Mikimoto, a 19th century gold and citrine pendant, a pair of seed pearl hoop ear pendants, an amethyst slider clip, a beetle stickpin and a blue stone bar brooch, *various dimensions*. (Quantity) **£500–£700**

336

FOUR EARLY 20TH CENTURY DIAMOND RINGS, of mostly crossover design, each ring set with either old brilliant or single-cut diamonds, mounted in gold and platinum, *total diamond weight approximately 0.85 carat, various ring sizes*. **£500–£700**

337

A SMALL COLLECTION OF JEWELLERY, comprising a 9ct gold rose pin, a gem-set pendant and bar brooch, circa 1900, and a circular painted Madonna and Child within an openwork bicoloured surround set with circular-cut rubies, stamped '18K', maker's mark 'W', *various lengths*. **£240–£340**

338

A GOLD AND SEED PEARL BROOCH, CIRCA 1900, of openwork flowerhead design and with additional pendant fitting, together with an Art Deco style brooch set throughout with vari-cut pastes, *first length 30mm*. (2) **£100–£150**

339

FOUR NECKLACES, including a ropetwist chain suspending a pear-shaped boule set throughout with turquoise cabochons, two box-link chains, and a curb-link chain with shell cameo pendant, *various stamps and lengths*. **£700–£900**

340

A SMALL COLLECTION OF JEWELLERY, comprising a late 19th century agate brooch, mounted in gold, a cameo pendant with enamel surround, and a graduated cultured pearl necklace with marcasite set clasp, *necklace length approximately 43cm.* (3) **£400–£600**

341

FIVE GEM-SET RINGS, to include an illusion-set diamond single stone ring, a rectangular-cut sapphire and diamond ring, a bouton pearl ring, a white stone half eternity ring, and a white stone and sapphire wishbone ring, two with UK hallmarks for 9ct gold, (pearl untested), *total diamond weight approximately 0.55 carat, various sizes.* **£200–£260**

342

A 9CT GOLD CURB-LINK BRACELET AND ASSORTED CHARMS, the curb-link bracelet with heart-shaped padlock clasp, London hallmark, together with a selection of ten loose charms including a gold Maltese cross, crown and boot; a carved aventurine figure and jadeite Pekingese dog charm (jadeite untested), *bracelet length 19cm.* (Quantity) **£1,000–£1,500**

343

A SMALL COLLECTION OF JEWELLERY, comprising three carved jadeite pendants, a pair of nephrite ear pendants and a fancy-link chain, (jadeite untested), *chain length 45cm.* **£800–£1,000**

344

A SMALL COLLECTION OF CULTURED PEARL AND DIAMOND JEWELLERY, comprising two cultured pearl necklaces, two pairs of cultured freshwater pearl and diamond ear pendants, three cultured pearl pendants, including one of black tint with spiral diamond surmount, and a pair of diamond ear studs, *various marks and dimensions.* (6) **£200–£300**

345

THREE GEM-SET RINGS, comprising an 18ct gold marquise-shaped diamond panel ring, a garnet and diamond cluster ring and a 9ct gold and opal single-stone ring, UK hallmarks, *ring sizes O½.* **£400–£600**

346

A SMALL COLLECTION OF JEWELLERY, comprising five assorted rings, some gem-set, a fancy-link chain and single ear clip, *various stamps and dimensions.* **£1,200–£1,500**

347 Y

A SMALL COLLECTION OF ANTIQUE JEWELLERY, to include an early 20th century aquamarine and gem-set pendant, Russian, mounted in silver, cased by A. Denissoff Dural'sky & Co., St. Petersburg, a coral and seed pearl brooch, circa 1900, mounted in gold, cased by The Goldsmiths & Silversmiths Company Ltd., a pair of turquoise earrings, mounted in gold, etc., *various lengths*. (5) **£200–£300**

348

AN INTERCHANGEABLE HARDSTONE NECKLACE, the polished agate beads, *measuring approximately 14.2mm*, with hammered boule-shaped clasp, together with three rows of interchangeable hardstone beads, accompanied by five loose beads, *first length including clasp 45cm*. **£100–£150**

349

THREE 9CT GOLD CHARMS, including a tankard, a hinged boot and a Moses basket, UK hallmarks, *first length 24mm*. **£170–£190**

350

A SMALL COLLECTION OF ANTIQUE GOLD AND GEM-SET JEWELLERY, including a heart-shaped seed pearl pendant, a bloomed gold circular brooch with half-pearl highlights and glazed verso, three gem-set bar brooches, a blue paste set pendant, and an acrostic musical bar brooch, the notes denoting the word 'DEAR', (pearls untested), *various dimensions*. (7) **£700–£900**

351

AN EARLY 20TH CENTURY RUSSIAN BUCKLE AND TWO GEM SET RINGS, the silver buckle with blue, white and red cloisonné enamel decoration, 84 zolotnik, assay master stamp possibly for Anatoly Apollonovich, together with a 14ct gold vari gem-set five hoop ring and a ruby and sapphire domed dress ring (one ruby deficient), *ring sizes M and P*. **£150–£200**

352 Y

A MIXED GROUP, comprising a 9ct gold wristwatch, a jadeite brooch, a fox mask bar brooch, a pearl bar brooch, a pair of earrings, a carved coral pendant/brooch depicting the Holy Family, beneath bow surmount, a 22ct gold wedding band, a Frey Wille silver enamelled ring and an 18ct gold oval pendant, (jadeite and pearls untested), *various sizes*. (9) **£500–£700**

353

TWO GOLD BRACELETS, comprising a 9ct gold gate-link bracelet and an 18ct gold bracelet with textured finish, London assay and import marks for 1982 and 1978 respectively, *first length 18cm*. **£500–£600**



WATCHES

LOT

No 392

354

ENGLISH. A GOLD CONSULAR CASED WATCH, 1824.

Movement: gilded full plate, verge escapement, fusee and chain.
Dial: gilt engine-turned pattern, applied Roman numerals within cartouches.

Case: 18ct gold, engine-turned back, engraved foliate design to the bezel and bow.

Signed: unsigned.

Dimensions: diameter 45mm.

£1,000–£1,500



355

SWISS. A GOLD OPEN-FACED WATCH, CIRCA 1860.

Movement: cylinder.

Dial: gilt, Roman numerals within engine-turned cartouches, floral motif to the centre.

Case: 18ct gold, engraved scroll and floral decoration, gilt cuvette.

Signed: unsigned.

Dimensions: diameter 36mm.

£400–£600

356

SWISS. A GOLD OPEN-FACED WATCH WITH ENGRAVED SCENE, CIRCA 1850.

Movement: cylinder escapement.

Dial: white enamel, Roman numerals.

Case: 18ct gold, hinged back, gilt metal cuvette, engraved scene depicting a lady's playing a drum, no. 16267 7737.

Signed: unsigned.

Dimensions: diameter 37mm.

£300–£500



357

SWISS. A GOLD OPEN-FACED WATCH, CIRCA 1860.

Movement: cylinder escapement.

Dial: white enamel, Roman numerals, floral motif to the centre.

Case: 18ct gold, engine-turned back with floral details and blank cartouche.

Signed: unsigned.

Dimensions: diameter 39mm.

£500–£700

358

J. HARGREAVES & CO. LIVERPOOL. A GOLD OPEN-FACED KEYLESS WATCH WITH STOP/START CENTRE SECONDS, 1892.

Movement: gilded three-quarter plate, lever escapement, no. 53044.

Dial: white enamel, Roman numerals, Arabic outer seconds track.

Case: 18ct gold, hinged back with engraved monogram, gold cuvette, stop/start slide to the band, Chester hallmark for 1892, maker's mark J.H&Co.

Signed: J. Hargreaves & Co. no. 53044, Makers to the Queen & H.R.H The Prince of Wales.

Dimensions: diameter 52mm.

Together with a 9ct gold strapwork fob suspending a Masonic pendant and two carnelian seals



359

SWISS, RETAILED BY STREET & CO. NEWCASTLE UPON TYNE. A GOLD OPEN-FACED KEYLESS WATCH, 1915.

Movement: lever escapement, 17 jewels.

Dial: white enamel, Arabic numerals, subsidiary seconds.

Case: 9ct gold, hinged back with engraved monogram, gold cuvette with inscription, Birmingham hallmark for 1915, case maker's mark A.L.D.

Signed: unsigned movement.

Dimensions: diameter 52mm.

Accessories: presentation case.

£600–£800

360

WALTHAM. A GOLD HUNTING CASED KEYLESS WATCH, CIRCA 1939.

Movement: lever escapement, 9 jewels, no. 29614747.

Dial: white enamel, Roman numerals.

Case: 9ct gold, hinged back, gold cuvette, no. 671348, maker's mark A.L.D., Birmingham hallmark for 1939.

Signed: dial and movement.

Dimensions: diameter 49mm.

£500–£700



361

W. G. BEVAN, LIVERPOOL, A GOLD OPEN-FACED KEYLESS WATCH TOGETHER WITH A GOLD ALBERT CHAIN, 1899.

Movement: gilded three-quarter plate, lever escapement, no. 145088.

Dial: white enamel, Roman numerals, subsidiary seconds.

Case: 18ct gold, hinged back, gold cuvette, Birmingham hallmark for 1899, maker's mark JR.

Signed: movement signed W. G. Bevan, 15 Castle Street, Liverpool.

Dimensions: diameter 50mm.

Together with an 18ct gold Albert chain.

£2,000–£3,000



362

GARRARD & CO. A GOLD RING WATCH, CIRCA 1954.

Movement: manual winding, 17 jewels.

Dial: silvered, applied Arabic and baton indexes.

Case: 18ct, snap-on back, hinged cover, no. 130926, Glasgow import mark for 1954.

Signed: movement signed Swiss made, dial signed Garrard & Co.

Dimensions: length 17mm, width 14mm, oval band ring size approximately J-L

£600-£800

363

ROLEX. A LADY'S GOLD SQUARE BRACELET WATCH, PRECISION, CIRCA 1953.

Movement: cal. 180, manual winding, 17 jewels.

Dial: silvered, applied dagger and dot indexes (lacking minute hand).

Case: 9ct gold, snap-on back, no. 178773, engraved monogram, Chester hallmark for 1953, 9ct gold, faceted square link bracelet, Birmingham hallmark for 1954.

Signed: case, dial, movement and bracelet.

Dimensions: length 23mm, width 16mm, bracelet circumference approximately 165mm.

Accessories: presentation case.

£400-£600



364

ENGLISH. A GOLD HALF HUNTING CASED KEYLESS WATCH, 1908.

Movement: gilded three-quarter plate, lever escapement, 7 jewels, no. 100866.

Dial: white enamel, Roman numerals, subsidiary seconds.

Case: 18ct gold, glazed aperture with black enamel Roman numerals, hinged back with engraved monogram, gilt metal cuvette with engraved inscription, Chester hallmark for 1908, maker's mark JE.

Signed: unsigned.

Dimensions: diameter 50mm.

£1,200-£1,800

365

INTERNATIONAL WATCH CO. A GOLD HUNTING CASED KEYLESS WATCH, CIRCA 1920.

Movement: lever escapement, no. 711631.

Dial: gilt, applied Arabic numerals, subsidiary seconds.

Case: 14ct gold, engine-turned covers, gold cuvette, no. 957392.

Signed: case, dial and movement.

Dimensions: diameter 51.5mm

£1,000-£1,500



366

CARTIER. A GOLD RECTANGULAR PURSE / TRAVEL TIMEPIECE, REF. 5463, CIRCA 1955.

Movement: manual winding, 18 jewels, no. 375461, lacking winding crown.

Dial: cream, Roman numerals.

Case: 18ct gold, ribbed design, hinged panel released by the sapphire cabochon pushers to reveal the dial, no. 8167, London hallmark for 1955, maker's mark JC.

Signed: dial, movement signed European Watch and Clock Co Inc.

Dimensions: length 44mm, width 31.5mm.

Accessories: presentation case.

£4,000–£6,000

For examples of similar purse / travel watches see Barracca, Negretti, Nencini, *Le Temps De Cartier*, p. 147-149.



367

PH. BEGUIN. A LADY'S GOLD BRACELET WATCH, CIRCA 1960.

Movement: manual winding, 17 jewels.

Dial: silvered, applied baton indexes.

Case: 18ct gold, snap-on back, integral polished woven bracelet, no. 396931.

Signed: dial.

Dimensions: diameter 16.5mm, bracelet circumference approximately 165mm. **£600–£800**



368

SWISS. A LADY'S PLATINUM AND DIAMOND-SET ART DECO COCKTAIL WATCH, CIRCA 1930.

Movement: manual winding.

Dial: silvered, Arabic numerals.

Case: platinum, snap-on back, diamond-set bezel and hinged lugs.

Signed: unsigned.

Dimensions: diameter 16mm, length including hinged lugs 46mm. **£200–£300**

369

EFICO. A LADY'S PLATINUM AND DIAMOND-SET TONNEAU-FORM COCKTAIL WATCH, CIRCA 1930.

Movement: manual winding.

Dial: silvered, Arabic numerals.

Case: platinum, hinged back, diamond-set bezel and lugs.

Signed: dial and movement

Dimensions: length including lugs 35mm, width 16mm.

Accessories: fitted presentation case. **£150–£200**



370

SWISS. A LADY'S PLATINUM AND DIAMOND-SET ART DECO COCKTAIL WATCH, CIRCA 1930.

Movement: manual winding, 17 jewels.

Dial: silvered, Arabic numerals.

Case: platinum, hinged back, diamond-set bezel and hinged lugs, later 9ct gold bracelet.

Signed: unsigned.

Dimensions: length including lugs 58mm, width 10mm. **£300–£400**

371

MOVADO. A LADY'S GOLD, AQUAMARINE AND DIAMOND-SET COCKTAIL WATCH, CIRCA 1950.

Movement: manual winding, 17 jewels.

Dial: silvered, applied Arabic and dagger indexes.

Case: 14ct gold, snap-on back, diamond and heart-shaped aquamarine-set lugs, aquamarine-set bracelet.

Signed: dial and movement.

Dimensions: diameter 15mm, bracelet circumference approximately 140mm.
£500-£600



372

TUDOR. A LADY'S WHITE GOLD AND DIAMOND-SET BRACELET WATCH, ROYAL, CIRCA 1962.

Movement: manual winding, 17 jewels.

Dial: silvered, applied baton indexes.

Case: 9ct gold, snap-on back, diamond-set lugs, integral 9ct gold bracelet, no. 372029.

Signed: case, dial, movement and bracelet.

Dimensions: diameter 17mm, bracelet circumference approximately 170mm.
£200-£300



373

CYMA. A LADY'S PLATINUM AND DIAMOND-SET ART DECO COCKTAIL WATCH, CIRCA 1930.

Movement: manual winding, 15 jewels.

Dial: silvered, Arabic numerals.

Case: platinum, hinged back, diamond-set bezel and hinged lugs, later 9ct bracelet.

Signed: movement.

Dimensions: length including lugs 53mm, width 11mm. £300-£400



374

LUXOR. A LADY'S WHITE GOLD AND DIAMOND-SET BRACELET WATCH, CIRCA 1960.

Movement: manual winding.

Dial: silvered, applied baton indexes.

Case: 18ct white gold, snap-on back, diamond-set bezel, integral textured bracelet

Signed: dial.

Dimensions: diameter 15mm, bracelet circumference approximately 160mm.
£600-£800

375

OMEGA. A GOLD RECTANGULAR WRISTWATCH, DE VILLE, CIRCA 1967.

Movement: cal. 620, manual winding, 17 jewels, no. 25979147.

Dial: gilt hobnail pattern, applied baton indexes.

Case: 18ct gold, snap-on back, hobnail bezel, no. 111081, gold plated buckle.

Signed: case, dial, movement and buckle.

Dimensions: length 30mm, width 23.5mm.

Accessories: presentation case.

£800–£1,200



376

ERNEST BOREL. A GOLD SQUARE WRISTWATCH, CIRCA 1950.

Movement: cal. 1525/1526, manual winding, 17 jewels.

Dial: silvered, baton indexes.

Case: 18ct gold, snap-on back, stepped bezel with textured finish, no. 762697.

Signed: case, dial and movement.

Dimensions: length 30mm, width 30mm.

£600–£800

377

PATEK PHILIPPE. A GOLD WRISTWATCH, CIRCA 1960.

Movement: manual winding, no. 965387.

Dial: silvered, applied baton indexes, subsidiary seconds.

Case: 18ct gold, snap-on back.

Signed: dial and movement, case unsigned.

Dimensions: diameter 34.5mm.

£2,400–£3,000



378

H. R. EKEGREN, GENEVA, MADE FOR J. E. CALDWELL & CO. PHILADELPHIA. A GOLD OPEN-FACED KEYLESS WATCH WITH CHAIN, CIRCA 1900.

Movement: lever escapement, no. 70844.

Dial: gilt, Arabic numerals, engine-turned centre.

Case: 18ct gold, hinged back with engraved monogram, inscription to the interior, signed gold cuvette.

Signed: dial, movement and cuvette, case signed J. E. Caldwell & Co.

Dimensions: diameter 43.5mm.

Accessories: presentation case and 18ct gold chain.

£1,200–1,800



379 v

PATEK PHILIPPE. A PINK GOLD WRISTWATCH, REF. 1513, CIRCA 1945.

Movement: cal. 12-120, manual winding, 18 jewels, no. 927240.

Dial: silvered, baton and applied Arabic numerals, subsidiary seconds.

Case: 18ct gold, snap-on back, no. 638712.

Signed: case, dial and movement.

Dimensions: *diameter 35mm.*

£4,000–£6,000

The reference 1513 was produced from 1941 to 1951. This elegant Calatrava model boasts a 35mm diameter case with attractive detail to then band and thin curved lugs.

The two-piece case was made by Wenger (master key 1), one of Patek Philippe's most prestigious case makers. Wenger produced the cases for some of the Patek's most important models including the exceptional ref. 2499 perpetual calendar chronograph.



380 Y

MUST DE CARTIER. A LADY'S GOLD PLATED RECTANGULAR WRISTWATCH, REF. 6 81006, TANK, CIRCA 1990.

Movement: quartz.

Dial: cream, Roman numerals, secret signature at VII.

Case: gold plated, back secured by four screws, cabochon sapphire-set crown, no. 77649.

Signed: case, dial and movement.

Dimensions: length including lugs 30.5mm, width 23mm.

Accessories: pouch.

£200–£300



381

OMEGA. A STAINLESS STEEL WRISTWATCH WITH DATE, REF. 132.019, CIRCA 1966.

Movement: cal. 611, manual winding. 17 jewels, no. 24063604.

Dial: silvered, applied baton indexes, date aperture.

Case: stainless steel, snap-on back, stainless steel buckle.

Signed: case, dial, movement and buckle.

Dimensions: diameter 34mm.

£150–£200

382 Y

MUST DE CARTIER. A LADY'S GOLD PLATED RECTANGULAR WRISTWATCH, TANK, CIRCA 1980.

Movement: manual winding, 17 jewels.

Dial: cream, Roman numerals, secret signature at VII.

Case: gold plated back secured by four screws, no. 6 22 3181.

Signed: case, dial and movement.

Dimensions: length including lugs 30.5mm, width 23mm.

Accessories: presentation case.

£300–£500



383

OMEGA. A STAINLESS STEEL OVAL WRISTWATCH WITH BRACELET, REF. ST.195.0013, DE VILLE, CIRCA 1982.

Movement: cal. 1336, quartz, 13 jewels, no. 45502542.

Dial: silvered honeycomb design, applied baton indexes, centre seconds.

Case: stainless steel, snap-on back, no. 3950810, stainless steel bracelet.

Signed: case, dial, movement and bracelet.

Dimensions: length 33.5mm, width 31.5mm, bracelet circumference approximately 180mm.

£80–£100

Please note this lot is subject to 20% on the hammer price.

384

LONGINES. A GOLD AUTOMATIC WRISTWATCH WITH DATE, REF. 7775-1, CIRCA 1966.

Movement: cal. 291, automatic, 24 jewels, no. 13496525.

Dial: silvered, applied baton indexes, centre seconds, date aperture.

Case: 18ct gold, snap-on back, no. 105.

Signed: case, dial and movement.

Dimensions: diameter 34.5mm.

£300–£500



385

OMEGA. A GOLD PLATED TONNEAU-FORM AUTOMATIC WRISTWATCH WITH DATE, CONSTELLATION, REF. 168.017, CIRCA 1966.

Movement: cal. 564, automatic, 24 jewels, no. 24271644.

Dial: silvered, applied baton indexes, date aperture, centre seconds.

Case: gold plated, screw-down back.

Signed: case, dial and movement.

Dimensions: length including lugs 40mm, width 34mm.

£300–£400

Please note this lot is subject to 20% on the hammer price.

386

OMEGA. A GOLD PLATED AUTOMATIC WRISTWATCH, REF. 167.021, CONSTELLATION, CIRCA 1966.

Movement: cal. 712, automatic, 24 jewels, no. 23658117.

Dial: silvered, applied baton indexes, centre seconds.

Case: gold plated, screw-down back.

Signed: case, dial and movement.

Dimensions: diameter 33mm.

£300–£400

Please note this lot is subject to 20% on the hammer price.



387 Y

EBEL. A GOLD WRISTWATCH WITH DATE, REF. 75102522, 1911, CIRCA 2001.

Movement: quartz.

Dial: cream, applied Roman numerals, date aperture, centre seconds.

Case: 18ct gold, back secured by eight screws, no. 8187916, 18ct gold folding buckle.

Signed: case, dial, movement and buckle.

Dimensions: diameter 36.5mm.

Accessories: warranty card, instructions, tags, presentation case.

£1,500–£2,000

All lots are subject to extra charges which may be viewed in Ts and Cs 3, 4, 5 and 10 at the back of this catalogue.

388

LONGINES. A STAINLESS STEEL WRISTWATCH, REF. 2401, CIRCA 1959.

Movement: cal. 30L, manual winding, 17 jewels, no. 11651325.

Dial: silvered, baton indexes, subsidiary seconds.

Case: stainless steel, snap-on back, no. 8888 1.

Signed: case, dial and movement.

Dimensions: diameter 35mm.

£100-£150



389

MINERVA. A CHROME PLATED AND STEEL WRISTWATCH, CIRCA 1940.

Movement: manual winding.

Dial: black, Arabic numerals, engine-turned subsidiary seconds.

Case: steel, screw-down back, no. D648146.

Signed: case, dial and movement.

Dimensions: diameter 34mm.

£200-£300

Please note this lot is subject to 20% on the hammer price.

390

LONGINES. A NICKEL PLATED BRITISH MILITARY WRISTWATCH, C.O.S.D., 'TUNA CAN', CIRCA 1945.

Movement: manual winding (back sealed due to corrosion - movement unseen).

Dial: silvered, Arabic numerals, inner red 24-hour markers, Board Arrow, centre seconds.

Case: nickel plated, screw-down back (sealed), fixed lugs, back with Broad Arrow C.O.S.D. no. 2110 2340.

Signed: dial.

Dimensions: diameter 35mm.

£1,000-£1,500

The C.O.S.D. - Combined Operations Stores Depot was established by Winston Churchill in 1940. These watches are believed to have been used by either paratroopers or specialist underwater demolition teams during the Second World War.



391

OMEGA. A STAINLESS STEEL AUTOMATIC WRISTWATCH WITH DATE AND BRACELET, REF. 368.1062, SEAMASTER, CIRCA 1986.

Movement: cal. 1109, automatic, 21 jewels, no. 49727334.

Dial: black, dot and baton indexes, date aperture, centre seconds.

Case: stainless steel, screw-down back, unidirectional rotating calibrated bezel, stainless steel bracelet.

Signed: case, dial, movement and bracelet.

Dimensions: diameter 38mm, bracelet circumference approximately 180mm.

£500-£700

Please note this lot is subject to 20% on the hammer price.

392

OMEGA. A RARE STAINLESS STEEL AUTOMATIC DIVER'S WRISTWATCH WITH DATE AND BRACELET, REF. 166.077, SEAMASTER 600, PLOPROF, CIRCA 1979.

Movement: cal. 1002, automatic, 20 jewels.

Dial: dark blue, baton indexes, date aperture, centre seconds.

Case: stainless steel, monobloc case, calibrated bezel, screw-down and locking crown, large red button for releasing the bezel, stainless steel bracelet.

Signed: case, dial, movement and bracelet.

Dimensions: length 44.5mm, width 54mm, bracelet circumference approximately 200mm.

Accessories: guarantee booklet, additional bracelet, later presentation case.

£4,000–£6,000

Introduced by Omega in 1970, the Ploprof name was derived from the French words Plongeur Professionnel, which means Professional Diver. The case which is made from a single block of steel allows for superior structural integrity making it waterproof to 2,000 feet. The bezel-locking system gives the watch its unusual shape, it ensures the bezel does not turn unintentionally, a crucially important element when accurate timing is essential when diving at extreme depths.

Omega sent prototypes of the Proplof to Ocean Systems Inc. in Tarrytown, NY for testing and the diving research company reported back stating that the watch was more watertight than a submarine.

Please note this lot is subject to 20% on the hammer price.



393

MUST DE CARTIER. A LADY'S GOLD PLATED RECTANGULAR WRISTWATCH, TANK, CIRCA 1980.

Movement: cal. 78-1, manual winding, 17 jewels.

Dial: cream, Roman numerals, secret signature at VII.

Case: gold plated, back secured by four screws, cabochon sapphire-set crown, no. 6 076726.

Signed: case, dial and movement.

Dimensions: length 30.5mm, width 23mm.

£300–£500

Please note this lot is subject to 20% on the hammer price.



394 Y

OMEGA. A GOLD SQUARE WRISTWATCH, DE VILLE, CIRCA 1974.

Movement: cal. 625, manual winding, no. 35170802.

Dial: gilt, applied baton indexes.

Case: 9ct gold, snap-on back, no. 1115071, London hallmark for 1974, maker's mark OWC, gilt metal buckle.

Signed: case, dial, movement and buckle.

Dimensions: length 26mm, width 26mm.

Accessories: guarantee booklet and original receipt.

£200–£300

395 Y

BAUME & MERCIER. A GOLD AND DIAMOND-SET RECTANGULAR WRISTWATCH, REF. 37205, CIRCA 1980.

Movement: cal. BN777, manual winding, 17 jewels.

Dial: black.

Case: 18ct gold, snap-on back, diamond-set bezel, cabochon sapphire-set crown, no. 804165.

Signed: case, dial and movement.

Dimensions: length including lugs 32.5mm, width 25mm. £800–£1,200



396 Y

MUST DE CARTIER. A LADY'S GOLD PLATED RECTANGULAR WRISTWATCH, REF. 1613, TANK, CIRCA 1998.

Movement: cal. 057, quartz, 4 jewels.

Dial: cream, Roman numerals, secret signature at X.

Case: gold plated, back secured by four screws, cabochon sapphire-set crown, no. CC287069, gold plated deployant buckle.

Signed: case, dial, movement and buckle.

Dimensions: length including lugs 27.5mm, width 20.5mm.

Accessories: certificate, service papers, folder and presentation case. £400–£600

397

CARTER. A LADY'S STAINLESS STEEL AND GOLD BRACELET WATCH, REF. 1120, SANTOS, CIRCA 1995.

Movement: cal. 157, quartz.

Dial: silvered, Roman numerals, secret signature at X.

Case: stainless steel, back secured by eight screws, gold bezel, cabochon sapphire-set crown, no. 016807, stainless steel and gold brick link bracelet.

Signed: case, dial, movement and bracelet.

Dimensions: length including lugs 29mm, width 21mm.

£600–£800



398

ROLEX. A LADY'S GOLD BRACELET WATCH, CIRCA 1966.

Movement: cal. 1300, manual winding, 17 jewels.

Dial: silvered, applied dagger and Arabic numerals.

Case: 9ct gold, snap-on back, Edinburgh hallmark for 1966, integral textured woven bracelet.

Signed: case, dial, movement and bracelet.

Dimensions: diameter 19.5mm, bracelet circumference approximately 170mm.

£500–£700

399

CHOPARD / KUTCHINSKY. A LADY'S GOLD AND DIAMOND-SET BRACELET WATCH WITH LAPIS LAZULI DIAL, REF. 66934, CIRCA 1967.

Movement: manual winding, 17 jewels.

Dial: lapis lazuli, baton indexes.

Case: 18ct gold, snap-on back, diamond-set bezel, integral textured link bracelet, case back with engraved initials, London import mark for 1967.

Signed: case, dial, movement and bracelet.

Dimensions: diameter 24mm, bracelet circumference approximately 155mm.

£1,000–£1,500



400

ROLEX. A LADY'S GOLD AUTOMATIC WRISTWATCH WITH DATE AND BRACELET (LATER SET DIAMONDS), REF. 68278, OYSTER PERPETUAL DATEJUST, CIRCA 1989.

Movement: cal. 2135, automatic, 29 jewels.

Dial: gilt, diamond-set indexes, magnified date aperture, centre seconds.

Case: 18ct gold Oyster case, screw-down back and crown, no. L633982, 18ct gold President bracelet, later set diamonds.

Signed: case, dial, movement and bracelet.

Dimensions: diameter 30mm, bracelet circumference approximately 180mm.

£4,000–£6,000

401

FREDERIQUE CONSTANT. A LADY'S STAINLESS STEEL OVAL BRACELET WATCH, REF. FC-200, ART DECO, CIRCA 2024.

Movement: quartz.

Dial: mother-of-pearl, Roman numerals, engine-turned centre.

Case: stainless steel, back secured by four screw, sapphire-set crown, no. 4066230, T-bar lugs, stainless steel brick link bracelet.

Signed: case, dial, movement and bracelet.

Dimensions: length 30mm, width 25mm, bracelet circumference approximately 170mm.

Accessories: spare links, tag, presentation case.

£150–£200



402

BAUME & MERCIER. A STAINLESS STEEL BRACELET WATCH WITH DATE, REF. 5131.2, CIRCA 1990.

Movement: quartz.

Dial: white, Roman numerals, date aperture, centre seconds.

Case: stainless steel, screw-down back, dodecagon bezel, stainless steel bracelet.

Signed: case, dial, movement and bracelet

Dimensions: diameter 34mm.

Accessories: presentation case.

£150–£200

To be sold on behalf of the International Liberty Association, Charity number 1160607.

403

CHOPARD. A LADY'S STAINLESS STEEL, GOLD AND DIAMOND-SET BRACELET WATCH WITH DATE, REF. 6118, ST. MORITZ, CIRCA 1990.

Movement: quartz.

Dial: silvered, diamond-set indexes, aperture for date.

Case: stainless steel, snap-on back, gold bezel secured by eight screws, no. 8024, stainless steel and gold bracelet.

Signed: case, dial, movement and bracelet.

Dimensions: diameter 24mm, bracelet circumference approximately 150mm.

Accessories: booklet, two spare links, presentation case. £500–£700



404

TAG HEUER. A LADY'S STAINLESS STEEL, GOLD AND DIAMOND-SET WRISTWATCH WITH DATE, MOTHER-OF-PEARL DIAL AND BRACELET, REF. WAF1350, AQUARACER, CIRCA 2010.

Movement: quartz.

Dial: mother-of-pearl, Arabic and diamond-set indexes, date aperture, centre seconds.

Case: stainless steel, screw-down back and crown, gold and diamond-set rotating bezel, stainless steel and gold bracelet.

Signed: case, dial, movement and bracelet.

Dimensions: diameter 32.5mm, bracelet circumference approximately 175mm.

£700–£900

Please note this lot is subject to 20% on the hammer price.

405 γ

OMEGA. A LADY'S PINK GOLD AND DIAMOND-SET AUTOMATIC WRISTWATCH, REF. 220.58.34.20.99.006, CO-AXIAL SEAMASTER AQUA TERRA, CIRCA 2010.

Movement: cal. 8807, automatic, no. 89684414.

Dial: pink gold, diamond-set wave design, marquise-cut diamond indexes, centre seconds.

Case: 18ct pink gold, diamond-set bezel, sapphire crystal screw-down back, no. 89684414, 18ct gold buckle.

Signed: case, dial, movement and buckle.

Dimensions: diameter 34mm.

£4,000–£6,000

Omega introduced the Aqua Terra to the Seamaster line in 2002. They are designed as the perfect balance between a sophisticated dress watch and a practical water resistant sports watch. This beautifully crafted robust watch is further heightened by its radiant dial featuring a wave design made from 138 diamonds.



406

CHANEL. A BLACK CERAMIC AND DIAMOND-SET AUTOMATIC WRISTWATCH WITH DATE AND BRACELET, J12, CIRCA 2000.

Movement: automatic.

Dial: black, diamond-set indexes, date aperture, centre seconds.

Case: black ceramic, stainless steel back secured by eight screws, diamond-set rotating bezel, no. J. H. 90708, black ceramic bracelet, double folding clasp.

Signed: case, dial, movement and bracelet.

Dimensions: diameter 38mm, bracelet circumference approximately 165mm.

Accessories: spare links and presentation case. £1,500–£2,000



407 Y

TISSOT. A GOLD AUTOMATIC WRISTWATCH WITH DATE, REF. 43500, VISODATE, MILITAR, CIRCA 1960.

Movement: cal. 784, automatic, 21 jewels, no. 5295921.

Dial: gilt, two-tone, engine-turned centre, applied indexes, aperture for date, centre seconds.

Case: 18ct gold, screw-down back, no. R 43500/44500-10.

Signed: case, dial and movement.

Dimensions: diameter 33.5mm. £300–£500

408 Y

ROLEX. A GOLD WRISTWATCH, REF. 5115, CELLINI, CIRCA 2012.

Movement: cal. 1602, manual winding, 20 jewels.

Dial: gilt, applied Roman numerals.

Case: 18ct gold, snap-on back, no. 1509Y7C6, 18ct gold buckle.

Signed: case, dial, movement and buckle.

Dimensions: diameter 32mm.

Accessories: guarantee card, card holder, instructions and presentation case. £1,800–£2,600



409

BELL & ROSS. A LIMITED EDITION BRONZE AND STAINLESS STEEL SQUARE DIVER'S WATCH WITH DATE, REF. BR03-92 DIVER, NO. 475/999, CIRCA 2018.

Movement: cal. BR 302, automatic, 25 jewels.

Dial: black, applied baton and dot indexes, date aperture, centre seconds.

Case: bronze, stainless back secured by four screws, calibrated rotating bezel, screw-down, bronze buckle.

Signed: case, dial, movement and buckle.

Dimensions: length 42mm, width 42mm.

Accessories: warranty card, instruction booklet, watch tools, spare straps, diver bronze badge, presentation case.

£1,500–£2,000



410

OMEGA. A STAINLESS STEEL OVAL AUTOMATIC WRISTWATCH WITH DAY/DATE AND BRACELET, REF. 166.079, DYNAMIC, CIRCA 1970.

Movement: cal. 752, automatic.

Dial: two-tone satiné silvered and blue, baton indexes, centre seconds, apertures for day and date.

Case: stainless steel, satin-finish, screw-down back, Tool-107, stainless steel tapering bracelet no. 1317/378.

Signed: case, dial, movement and bracelet.

Dimensions: length 36.5mm width 41mm, bracelet circumference approximately 210mm.

Accessories: two additional leather straps and later Omega pouch. £400–£600



Please note this lot is subject to 20% on the hammer price.



411

ROLEX. A STAINLESS STEEL WRISTWATCH WITH BRACELET, REF. 6426, PRECISION, CIRCA 1972.

Movement: cal. 1225, manual winding, 17 jewels.

Dial: silvered, applied baton indexes, centre seconds.

Case: stainless steel Oyster case, screw-down back and crown, stainless steel Oyster bracelet.

Signed: case, dial, movement and bracelet.

Dimensions: diameter 34mm, bracelet circumference approximately 190mm.

Accessories: service papers, service pouch, presentation case, tag. £1,600–£2,600

412

TUDOR. A STAINLESS STEEL AND GOLD AUTOMATIC WRISTWATCH WITH DATE AND BRACELET, REF. 57003, GLAMOUR, CIRCA 2014.

Movement: cal. 2892, automatic.

Dial: silvered, applied baton and diamond-set indexes, engine-turned chapter ring, double date aperture, engine-turned subsidiary seconds with Tudor Rose design.

Case: stainless steel, gold bezel, screw-down back and crown, no. J509771, stainless steel and gold bracelet.

Signed: case, dial, movement and bracelet.

Dimensions: diameter 42mm.

Accessories: guarantee card, instruction booklet, spare links, presentation case.

£1,000–£1,500



Please note this lot is subject to 20% on the hammer price.



413

IWC. A STAINLESS STEEL AUTOMATIC SPLIT CHRONOGRAPH WRISTWATCH WITH DAY AND DATE, REF. 3713, SPITFIRE DOPPELCHRONOGRAPH, CIRCA 2005.

Movement: cal. 79230, automatic, 29 jewels.

Dial: silvered, applied Arabic numerals, engine-turned chapter ring, engine-turned subsidiary dials for constant seconds, 30-minute and 12-hour registers, aperture for day and date.

Case: stainless steel, screw-down back and crown, no. 2951253, stainless steel buckle.

Signed: case, dial, movement and buckle.

Dimensions: diameter 41.5mm.

Accessories: blank guarantee card, instruction booklet, presentation case. £2,400–£3,400

414

ROLEX. A STAINLESS STEEL AUTOMATIC WRISTWATCH WITH BRACELET, REF. 124060, SUBMARINER, CIRCA 2021.

Movement: cal. 3230, automatic, 31 jewels.

Dial: black, applied triangular, baton and dot indexes, centre seconds.

Case: stainless steel Oyster case, screw-down back and crown, no. 341W39V3, stainless steel Oyster bracelet.

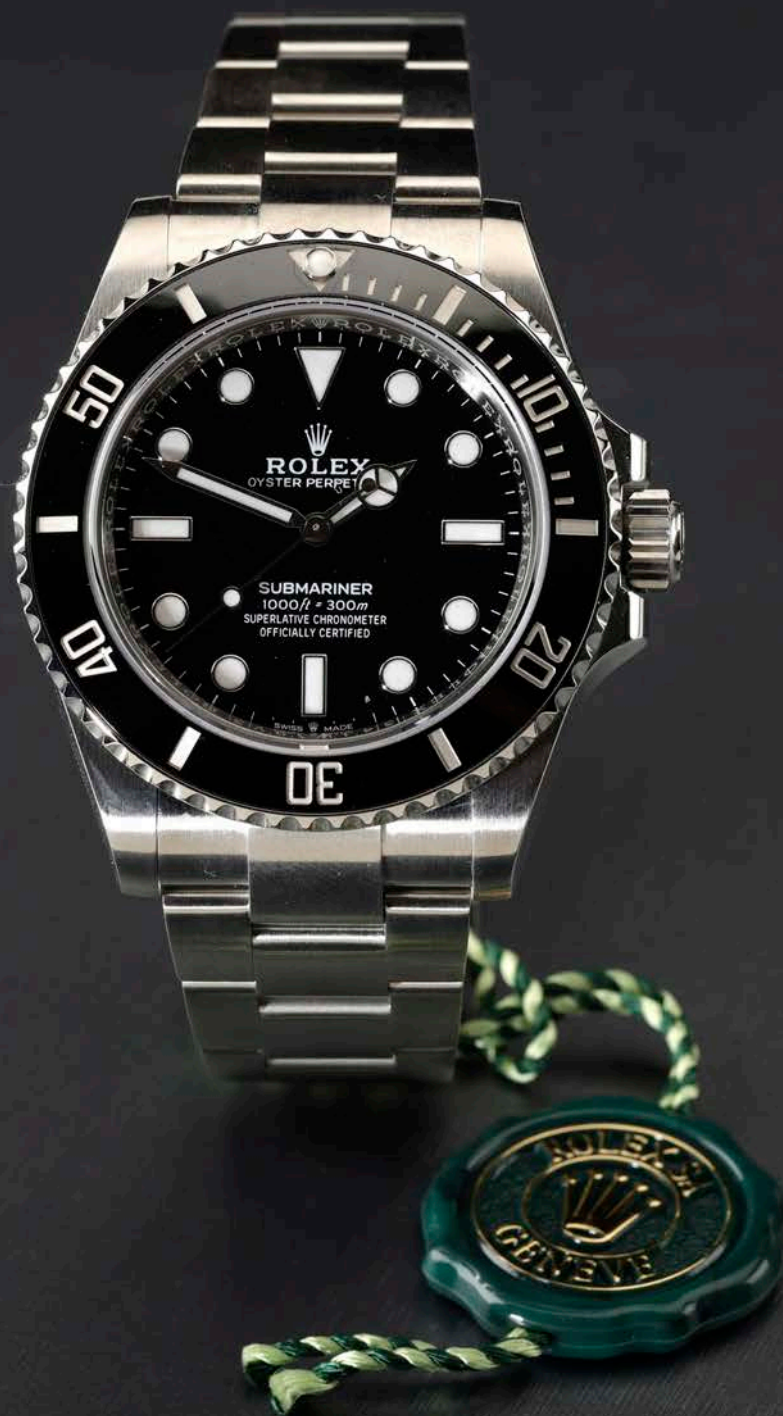
Signed: case, dial, movement and bracelet.

Dimensions: diameter 40mm, bracelet circumference approximately 205mm.

Accessories: guarantee card, tags and presentation case.

£6,500–£8,500

The Submariner was first released by Rolex in 1953. The quintessential tool watch designed to be used by the military and commercial divers exploring the depths of the oceans. Over the decades it has achieved iconic status by being worn by the likes of James Bond and such Hollywood stars as Steve McQueen and Robert Redford. Today the Submariner represents enduring style and horological engineering crafted out of a need for adventure.



415

CHANEL. A LADY'S CERAMIC BRACELET WATCH, REF. H0682, J12, CIRCA 2011.

Movement: quartz.

Dial: black, Arabic numerals, date aperture, centre seconds.

Case: black ceramic, stainless steel back secured by eight screws, calibrated rotating bezel, no. O.G84534, black ceramic bracelet.

Signed: case, dial, movement and bracelet.

Dimensions: diameter 34mm, bracelet circumference approximately 155mm.

Accessories: certificate, booklet, two spare links and presentation case.

£400–£600



416

OMEGA. A STAINLESS STEEL WRISTWATCH WITH DATE, SEAMASTER, PLANET OCEAN, CO-AXIAL, REF. 168.1650, CIRCA 2007.

Movement: cal. 2500, automatic, 27 jewels, no. 81842691.

Dial: black, applied baton indexes and Arabic numerals, date aperture, centre seconds.

Case: stainless steel, screw-down back, unidirectional calibrated bezel, stainless steel buckle.

Signed: case, dial, movement and buckle.

Dimensions: diameter 45mm.

Accessories: Omega winding case.

£1,500–£2,000

417 Y

OMEGA. AN OVERSIZED STAINLESS STEEL WRISTWATCH, REF. 2806.52.37, RAILMASTER, SEAMASTER AQUA TERRA, CIRCA 2006.

Movement: cal. 2201, manual winding, 17 jewel, no. 80931888.

Dial: black, Arabic and dagger indexes, subsidiary seconds.

Case: stainless steel, screw-down sapphire crystal display back, stainless steel folding buckle.

Signed: case, dial, movement and buckle.

Dimensions: diameter 49.5mm.

Accessories: Omega service case.

£1,200–£1,800



418 γ

IWC. A LARGE STAINLESS STEEL AUTOMATIC WRISTWATCH WITH DATE AND 7 DAY POWER RESERVE, REF. 5004, BIG PILOT, CIRCA 2010.

Movement: cal. 51111, automatic, 42 jewels.

Dial: black, Arabic and baton indexes, date aperture, 7-day power reserve indication, centre seconds.

Case: stainless steel, screw-down back and crown, no. 3276386, stainless steel folding clasp.

Signed: case, dial, movement and clasp.

Dimensions: diameter 46mm.

Accessories: blank guarantee card, instructions booklet, presentation case.

£3,000–£5,000

In 1940 IWC was commissioned to produce pilot's watches for the German Air Force (Luftwaffe), with its large 55mm case and oversized crown it was intended to be worn over the sleeve of a flight jacket.

In 2002 IWC reintroduced this iconic model with a automatic movement. Called the "Grosse Fliegeruhr" or "Big Pilot's" watch the design rekindled the classic style of the original aviator's watch with a modern contemporary look.



419

A GROUP OF THREE WATCHES TOGETHER WITH A POCKET BAROMETER..

The group comprising: a silver pair cased repousse verge watch signed Thos Gould, London; a gilt metal pair cased verge watch signed Frans Putley, London; an 18ct gold open-faced cylinder watch; a pocket barometer signed M. Pillischer; a 9ct gold locket.

Dimensions: *diameters: 50mm; 49.5mm; 41mm; 49.5mm; 16.5mm.* £200–£300

420

SWISS. THREE ART DECO COCKTAIL WATCHES, CIRCA 1930.

Movements: manual winding.

Dials: silvered, Arabic numerals.

Cases: 1st: chrome and diamond-set; 2nd & 3rd: platinum and diamond-set.

Signed: unsigned.

Dimensions: *lengths 26.5mm, 31.5mm, 30.5mm.* £300–£500

421

A GROUP OF SEVEN WRISTWATCHES INCLUDING THREE ALARM WATCHES.

The group comprising: a manual Gigandet watch with day & date; a manual Memostar watch with alarm & date; a manual Original watch with date; a automatic Suntrek watch with day & date; a manual Poljot watch with alarm; a manual Titus watch; a manual Trafalgar watch with alarm.

£60–£80

422

MAPPIN & WEBB. A GROUP OF FIVE WRISTWATCHES.

The group comprising: a steel quartz watch with date; a steel quartz watch with date and bracelet; a gold plated automatic watch with date; a steel automatic watch with day, date and bracelet; a gold plated quartz watch.

£40–£60

423

WITTAUER. A GROUP OF FOUR WRISTWATCHES.

Movements: 1st & 2nd: manual; 3rd: quartz; 4th: manual.

Dials: 1st: silvered; 2nd: black; 3rd & 4th: gilt.

Cases: gold plated and stainless steel.

Signed: cases, dials and movements.

Dimensions: *1st: length 37mm; 2nd: 32mm; 3rd: length 28.5mm; 4th: width 29.5mm.*

£40–£60

424

BULOVA. THREE GOLD PLATED WRISTWATCHES, CIRCA 1960.

Movements: 1st & 2nd: automatic; 3rd: manual winding.

Dials: silvered.

Cases: gold plated.

Signed: case, dial and movements.

Dimensions: *1st & 2nd: 32.5mm; 3rd: 32mm.*

£100–£150



OBJECTS OF VERTU

LOT

No 443



425

A 9CT GOLD MESH-LINK EVENING BAG, CIRCA 1919, with blue gem-set catch and chain handle, sponsor's mark 'GD', London import mark for 1919, total length 26.5cm.

£3,000–£4,000

426

TWO 9CT GOLD VESTA CASES, both engine-turned decorated, the first with circular vacant reserve, by Henry Matthews, Birmingham 1914, the second by Edwards & Son, Birmingham 1919, both with ring suspensory loops, lengths 46 and 48mm.

£600–£800



427

OF CRIMEAN WAR INTEREST: A RARE SILVER CARD CASE, of shaped rectangular form, the front engraved with a central oval reserve depicting a British and French soldier uniting as allies,, by Yapp & Woodward, Birmingham 1854, length 10cm.

£400–£600

The engraved scene is after Punch's cartoon of 1854, 'The United Service'.

Crimean War (1854–56): In 1854 Britain and France allied with Turkey and Sardinia in hostilities against Russia. The alliance of France and Britain formally began on 28 March 1854. This Punch cartoon 'The United Service' illustrates the alliance of these two countries, the British and French soldiers before their standards and cannon, to the foreground, the cast iron canon balls.



428

A SILVER AND ENAMEL VESTA CASE BY SAMPSON MORDAN & CO, depicting a scene of a coach and four, with coachman, a lady and three top hatted gentleman on the box, numbered 22, London 1892, reverse initialed, length 5.6cm. £500-£600

429

AN 18CT GOLD VESTA CASE, enamelled with depictions of the Four Vices - drinking, horse racing, gambling and women, to the lower right four screws, meaning 'Vis' or Vice, hence a pictogram of 'MY FOUR VICES', import marks for Murrle Bennet & Co, London 1904, two owl import marks, with suspensory loop, width (excluding suspensory loop) 44mm. £1,200-£1,600



430

A VICTORIAN SILVER VISITING CARD CASE, of rectangular form, the front centred with a spray of roses in oval reserve, the reverse similarly decorated around a vacant oval reserve, engine-turned decoration throughout, the case opening to reveal silk-lined compartmented interior, by William Sumner I, London 1873, length 10cm. £200-£260





431

TWO AMERICAN SILVER VESTA CASES, of shaped rectangular form, the first engraved to the front with a floral wreath applied with bicoloured gold flowerheads, centred with engraved monogram, the second with spray of enamelled forget-me-nots, initialled to the reverse, both stamped 'STERLING', lengths 6.3 and 6.8cm. £200-£260



432

A SILVER AESTHETIC MOVEMENT VESTA CASE BY SAMPSON MORDAN, engraved with scenes of a crane, bird and fish, with vacant circular cartouche, London 1884. with ring suspension loop, length 48mm. £400-£500



433

OF KATE GREENAWAY INTEREST: A SILVER VESTA CASE BY SAMPSON MORDAN, engraved to the front and reverse with typical scenes of children playing, initialled 'AA', London 1886, length 40mm. £100-£150



434

A VICTORIAN SILVER VESTA CASE, of rectangular form, with double sided sprung lids, engine-turned throughout, the cover with central circular monogrammed reserve, retailed by 'A. THOMAS 39B OLD BOND STRT ' (sic), by Henry William Dee, 1873, length 5cm. £100-£150



435

A SILVER VESTA CASE, depicting galloping horses to both sides, stamped 'STERLING 925', with suspensory loop, and a square silver foliate engraved sovereign case by William Hair Haseler, Birmingham 1909, lengths 48 and 44mm. (2) £100-£120

436

A SILVER TABLE VESTA, of rectangular form, engine-turned with cast foliate borders, opening to reveal a hinged strike, inside lid engraved in script 'Bunsky', by Frederick Thomas Buckthorpe, London 1917, retailed by Asprey, length 5.8cm. £300-£400





437

A SILVER VESTA CASE, with enameled portrait of Baden Powell, by Cornelius Desormeaux Saunders & James Francis Hollings (Frank) Shepherd, Birmingham 1900, with suspensory loop, length (excluding suspensory loop) 48mm. £300–£360



438

A RARE SILVER VESTA CASE, depicting an enameled portrait of General French by Patterson & Sons Ltd, Birmingham 1914, with suspensory loop, length 48mm. £300–£360



439

OF BOER WAR INTEREST: A SILVER VESTA CASE TITLED 'A GENTLEMAN IN KHARKI', depicting a wounded soldier carrying his gun, by Cornelius Sanders & Shepherd, Birmingham 1899, with suspensory loop, length (excluding suspensory loop) 48mm. £300–£400

'A Gentleman in Kharki' is a line from the Rudyard Kipling poem, 'The Absent Minded Beggar' of 1899, set to music by Sir Arthur Sullivan, and often accompanied by an illustration of a wounded but defiant British soldier 'A Gentleman in Kharki' by Richard Caton Woodville. The song was written as part of an appeal by the *Daily Mail* to raise money for soldiers fighting in the Boer War and their families. The Absent-Minded Beggar Fund was hugely successful, raising a total of more than £250,000.

440

A SILVER CIGARETTE CASE, plain, of rectangular bowed form, with drop front panel revealing circular glazed locket compartment enclosing portrait of a young lady, by maker Deakin & Francis, number '15', Birmingham 1909, length 8.2cm. £200-£260



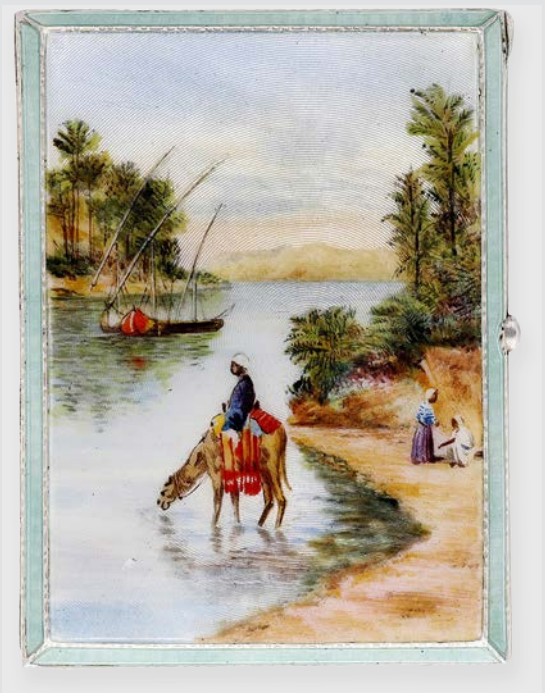
441

OF BOER WAR INTEREST: A SILVER VESTA CASE, the front enameled with the Queen's South Africa medal ribbon by Arthur & John Zimmerman, Birmingham 1902, with suspensory loop, length 48mm. £200-£300

The Queen's South Africa Medal (QSA) was awarded to military personnel who served in the Boer War in South Africa between 11 October 1899 and 31 May 1902.

442

A SILVER AND ENAMEL CIGARETTE CASE, of rectangular form, the cover depicting a scene of the Nile, with camel and figures, within turquoise enamelled engine-turned border, by Henry Clifford Davis, Birmingham 1930, length 8.5cm. £160-£200



443

A SILVER CIGARETTE CASE, of bowed rectangular form, the enamel scene depicting a young naked woman at the water's edge wearing a pink mob cap, monogrammed to the reverse, maker's mark probably T A & Co, for Thomas Acott & Co, Birmingham 1894, length 8.8cm. £600-£800



444

A GERMAN SILVER CIGARETTE CASE, CIRCA 1910, of bowed rectangular form with rounded corners, the front with enamelled scene of a naked young woman, her arms raised above her head, wading in a stream, the enamelled scene by Fritz Bemberg, with maker's mark, stamped '935', crown and crescent mark, length 9cm. £600-£800

Fritz Bemberg from Pforzheim, Germany, was from a small family business, specialising in enamel artistry, he was active circa 1900-1940.



445

A SILVER CIGARETTE CASE, of rectangular form with rounded corners, the front enamelled with a naked woman with long flowing hair before a dark rocky background, stamped '900', maker's mark within a heart, (indistinct), length 9cm. £600-£800





446

A SILVER CIGARETTE CASE, ENCLOSED CONCEALED EROTIC SCENE, the plain cover opening to reveal an interior scene with a naked woman warming herself before a fire stamped 'STERLING 935', length 8.5cm.

£800–£1,000



447

A SILVER CIGARETTE CASE WITH CONCEALED EROTIC SCENE, the plain exterior opening to reveal inner panel depicting enamelled boudoir scene with a nude woman with cat, import mark for Birmingham 1911, sponsor's mark probably S & Co, front initialled 'SM', length 8.9cm.

£800–£1,000

448

A GERMAN SILVER CIGARETTE CASE WITH CONCEALED EROTIC SCENE, the plain exterior enclosing an enamelled panel depicting a recumbent nude woman, wearing headdress, within an Oriental interior, stamped '935 STERLING', with crown and crescent mark, length 8.5cm.

£800–£1,000





449

A LARGE SILVER CIGARETTE CASE, of plain rectangular bowed form, gilt interior,
by Colen Hewer Cheshire, Chester 1899, length 12cm. £100–£150



450

A SILVER VESTA CASE, inset with gold
monogrammed roundel and thumbpiece,
by Horton & Allday, Birmingham 1894, length
(excluding suspensory loop) 46mm. £100–£150



451

A SILVER VESTA CASE, of plain rectangular form with rounded corners,
incorporating a cigar cutter below, by HJilliard & Thomason, Birmingham 1897,
with ring suspension loop, length 48mm. £80–£100



452 Y

A COLLECTION OF MOTHER-OF-PEARL GAMING COUNTERS, comprising various shapes and designs to include fish, flowers, birds, etc., various lengths. (Quantity) £80-£120



All lots are subject to extra charges which may be viewed in Ts and Cs 3, 4, 5 and 10 at the back of this catalogue.



453

A 'MUST II' BALL POINT PEN BY CARTIER, in red lacquer, signed 'Must de Cartier', numbered '603730', maker's case and guarantee, length 13cm. £60-£80

Please note this lot is subject to 20% on the hammer price.



454

A 'MEISTERSTÜCK' FOUNTAIN PEN BY MONT BLANC, in black lacquer, knib stamped '14k 4810', maker's case, length 13cm. £100-£150

Please note this lot is subject to 20% on the hammer price.



455

AN EARLY VICTORIAN GOLD COMBINED VINAIGRETTE AND LOCKET, A SILVER MOTE SPOON, A SOVEREIGN CASE AND A VESTA CASE, the vinaigrette engine-turned, circular and with suspension loop, unmarked, the sovereign case engine-turned, Birmingham 1910, the vesta case with cursive initials 'W M', by George Unite, Chester 1900. (4) £400-£500

456

A PAIR OF LATE 19TH CENTURY SILVER MOUNTED FOLDING OPERA GLASSES, with two pairs of circular lenses, connected by a sliding bar and hinged mother-of-pearl carrying handle, London import mark for 1895, by R. & J. Beck. Ltd, with stamped lozenge mark 'JLBM' with star, with accompanying case, width 10.2cm, length extended 9cm. £300-£400

R & J Beck Limited were camera lens manufacturers and optical instrument makers between 1867-1968. The company was first established in 1843 by Richard Beck, Joseph Beck and James Smith, trading as 'Smith Beck and Beck'. After Smith's retirement in 1865, the company's name changed to Beck & Beck. Circa 1867-1894 the name was again updated to R & J Beck, now trading at 31 Cornhill, London and also in Philadelphia, USA. From circa 1894, the company was incorporated as a limited company, R & J Beck Ltd.



457

TWO RETRACTABLE TOOTHPICKS, one plain with hardstone seal terminal, signed 'Sampson Mordan & Co, 15ct', the other foliate engraved and hallmarked for 9ct gold, together with two retractable pencils, unmarked. (4)

£300-£400



458

A GOLD PROPELLING PENCIL BY GOWLAND BROTHERS, CIRCA 1887, celebrating the Golden Jubilee, with applied crown and Agnus Dei, engraved inscription, signed 'Gowland Bros', length including suspension loop 7.5cm. £150-£200

459

A GEORGE II GOLD RATTLE BY SANDILANDS DRINKWATER, CIRCA 1745, incorporating whistle and formerly with coral teething bar, with four bells suspended from the chamfered rectangular knop, having a fixed loop for hanging, the body repoussé decorated with C scrolls and flowerheads, initialed to mouthpiece, maker's mark only, length 10cm. £2,000-£3,000





460

A 9CT GOLD NECESSAIRE BY DUNHILL, 1936, of rectangular form, with ribbed decoration throughout, comprising a hidden lighter, watch, pencil and writing slide, the hinged lid opening to reveal compartmented interior with bevelled mirror, powder compact and lipstick holder, the front engraved with armorial, maker's mark for Alfred Dunhill, London hallmark, *dimensions* 8.2 x 5.3 x 4.1cm. £2,600–£3,000

Provenance: The arms are those of Berry.

Formerly the property of The Honourable Mary Pamela Berry (1918–998), the only daughter of James Gomer Berry, the 1st Viscount Kemsley and his first wife, Mary Lilian Holmes.

Pamela married Douglas Charles Lindsey Gordon, the 12th Marquess of Huntly (1908–1987), the eldest son of Lieutenant Colonel Granville Cecil Douglas Gordon and his wife, Violet Ida Streatfeild.

Thence through direct family descent.



461

AN AUSTRIAN SLIM GOLD SNUFF BOX, LATE 19TH / EARLY 20TH CENTURY, of rectangular form, engine-turned decorated, the cover edged by engraved stylised foliage, the sides with borders of meandering flowers, assay marks for 14k gold, (marks in use between 1872–1922), maker's mark, city mark for Vienna, *length* 8.7cm. £5,000–£5,500



462

A GOLD AND SAPPHIRE VANITY CASE BY CARTIER, CIRCA 1920, of rectangular form, set to the front and base with repeating sapphire cabochons, each within a flowerhead motif, with similarly-set thumbpiece, opening to reveal mirror; powder compartment with cover and lipstick holder, signed 'Cartier Paris', maker's marks (misstruck), French assay marks, numbered '02324', dimensions 8.4 x 7.4 x 1.3cm. £6,000–£8,000

Following the end of World War II, women had achieved a new level of emancipation and confidence: it was now considered acceptable to smoke in public, (previously the preserve of men), and to wear cosmetics, even to be seen in public applying makeup. After the years of deprivation, this post-war era excited a new taste for the glamorous lifestyle. To match these lifestyle changes, the 1920s and 30s saw the finest jewellery houses such as Cartier, Boucheron, Laclouche Frères and Van Cleef & Arpels producing exquisite luxury miniature vanity cases and nécessaires of the highest craftsmanship.



463

A COLLECTION OF FOBS, to include an early 19th century example set with a foil-backed cushion-shaped citrine, in a gold foliate mount with a monkey to one side and dog to the other, together with various 9ct gold examples, two gold mounted compasses, etc., some with UK hallmarks, *various lengths*. (8)

£300–£400



464

A LATE 17TH CENTURY SILVER CANNON-HANDLED KNIFE, the silver handle with engraved decoration, with marks to the steel blade, probably for Ephraim How, and dagger mark of the London Cutlers Company, unmarked, *length 11.5cm*.

£100–£150

Ephraim How (1652–1720) and his son John ran a successful and productive cutlery factory. They standardised their designs, employed a large workforce and harnessed local water power. They sold from their shop on Saffron Hill near Clerkenwell in London. Ephraim How became Master of the Worshipful Company of Cutlers in 1706, his mark being a crown above a heart.

See: Victoria & Albert Museum, refs: M.976&A-1926 and M.132&A-1978.



465

A LATE 19TH - EARLY 20TH CENTURY SILVER GILT FIGURE, possibly Odysseus and his dog Argo, *height 35mm*.

£100–£150

466

AN AGATE SWIVEL FOB, 1924, set with oval-shaped bloodstone and chalcedony panels, mounted in 9ct gold, Birmingham hallmark, maker's mark for Manton & Mole, length including bale 42mm. £200-£300



467

AN EARLY 19TH CENTURY GOLD AND HARDSTONE SEAL, the cushion-shaped chalcedony intaglio carved with the crest of the Craig clan of Scotland - a knight/chevalier on horseback in full armour, grasping a broken lance, below a banner bearing the motto 'VIVE DEO UT VIVAS', in a foliate and scroll gold mount, height 34mm. £240-£300

The motto of the Craig clan, 'Vive deo ut vivas' translates as 'Live for God that you may live'.

See: Fairbairn's Crests, page 128 and plate 43, crest 2.



468

A CARVED AMETHYST SEAL, of mushroom form, the base intaglio carved with a rose spray above the black letter initials 'OS', dimensions 28 x 21 x 23mm. £100-£150

469

AN EARLY 19TH CENTURY AGATE AND GOLD DESK SEAL, the flared faceted chalcedony handle above a border of small cabochon turquoise, to a scroll and acanthus leaf mount, the octagonal base inset with an amethyst intaglio carved with a wreath encircling the motto 'remember', length 63mm. £300-£500





470

MASONIC INTEREST: ROYAL MASONIC BENEVOLENT INSTITUTE FOR GIRLS: festival stewards' enamelled jewels, 1904, 1924, 1936 (in silver), various dates 1952 - 1983 (gilt metal, some duplicates). (25)

£300-£340



471

MASONIC INTEREST: ROYAL MASONIC BENEVOLENT INSTITUTION FOR BOYS: festival stewards' enameled jewels, 1908 and 1937 (both in silver), various dates 1946 - 1982 (gilt metal), together with five provincial examples: Northants and Hunts, Essex, Leics, Rutland and Northumberland. (22) £200-£300



472

MASONIC INTEREST: ROYAL MASONIC BENEVOLENT INSTITUTION: festival stewards' enamelled jewels, 1910, 1911, 1920, 1926 (2), 1929, 1937 (all silver), various dates including 1952, 1983 (gilt metal, some duplicates), one provincial example Middlesex 2000 and a patron's jewel, also for Middlesex. (21)

£260–£300



473

MASONIC INTEREST: Great War peace jewel, 1919, Peace Memorial Festival jewel, Olympia, 1925, Royal Masonic hospital jewel, 1930 (base metal); two Mark Degree benevolent fund jewels, one with presentation inscription dated 1884, Portal (No. 3237) chapter jewel, and others. (18)

£200–£240



474

MASONIC INTEREST: A COLLECTION OF JEWELS PRESENTED TO JAMES DIXON MOUNSEY, silver gilt and enamel, to include Royal Masonic Benevolent Institution, Royal Masonic Institute for Boys, also that for Girls, Guildhall two-part 1937 coronation medal, etc. (10) £240–£300

James Edward Mounsey (1871–1941): draper, received into freemasonry (Temple lodge) in 1908, liveryman of the Feltmakers Company, made free of the City of London, 1913.



475

SOMERSET: THREE SILVER MASONIC JEWELS, two for Senior Warden and one for Master of Ceremonies, all of oval locket form, one bearing the name on a red enameled garter, the others in applied lettering on a textured ground, two centred with a pendulum mounted over blue enamel, the third with crossed batons over blue enamel, two by George Kenning & Son, the first hallmarked London 1929, in fitted case, the second, hallmarked for London 1922, the third stamped 'Spencer, London' and hallmarked for Birmingham 1899, all with suspensory loops, *various dimensions*. (3)

£80–£100



476

TWO 9CT GOLD MASONIC FOBS, the first with engraved hardstone seal in a gold mount formed of masonic motifs including square, compass, keystone, etc., together with a gold square and compass fob, first with Birmingham hallmark for 1909, second for 1989, *lengths including bales 33mm and 28mm*. £200–£300

477

A GEORGE I SILVER TEA CADDY, with chamfered angles, later repoussé decorated with C scrolls, flowerheads and foliage, by Gundry Roode, London 1715, height 12cm. £150-£180



478

THREE MATCHING RUSSIAN SILVER AND NIELLO BEAKERS, reserving oval panels of a hunting scene, a statue of Peter the Great and shipping, on a matted ground decorated with scrolling foliage, maker A K, Moscow 1841 and 1842, height 6.5-8cm. £500-£700



479

A RUSSIAN LATE 19TH CENTURY SILVER AND NIELLO CIGAR CASE, reserving a panel of the Kremlin and bridge over the Moskva river, on a ground of formal scrolling leaves and flowerheads, Moscow, length 14.5cm. £300-£400



480

A SILVER MOUNTED MANICURE SET, comprising nine pieces, to include a pair of cosmetic pots and covers and a nail buffer, Birmingham 1938 and 1939, cased. £100–£150

481

A SILVER BUCKLE AND BUTTONS SET, comprising a belt buckle of pierced scrolling design, and set of six buttons of conforming design, by A. Willis & Co, Sheffield 1900, cased, buckle width 10.1cm. £200–£300



482

A SILVER 'JERSEY CAN', with raffia-insulated handle and lid with loop handle, the girdled, globular body engraved with crest and motto, Birmingham 1967, stamped 'K T K', height 18cm. £260–£300

The crest is that of Baron.



483

A GEORGE VI SILVER CREAM JUG, the baluster body with scroll handle, maker's mark 'G H', Sheffield 1945, height 11cm. £150-£200



484

AN INDIAN SILVER FOOTED BOWL, repoussé decorated with a band of scenes of husbandry and with crimped rim, unmarked, height 10cm. £100-£120



485

A CHINESE EXPORT SILVER MOUNTED HAND MIRROR, pierce-cast with conforming dragons, the handle in imitation of bamboo, .90 standard, retailed by Wang Hing, circa 1900, length 27.5cm. £300-£400



486

AN UNUSUAL TRIO OF VICTORIAN ELECTRO-PLATE SERVING SPOONS AND SIFTER SPOON, the spoon bowl relief decorated with billing exotic birds within borders of flowerheads and reeds, registration marks for May 1880, cased, spoon length 23cm. £100-£150



487

A PAIR OF VICTORIA SILVER GRAVY SPOONS, bead-edged old English pattern, crested, by Francis Higgins, London 1887, length 31cm. £220-£240



488

A SET OF FOUR VICTORIA SILVER GILT SWEETMEAT DISHES, navette shape, with pierce-decorated sides, by James Willis Dixon, London 1896, length 14cm. £200-£300



489

A VICTORIA SILVER GILT AESTHETIC MOVEMENT DESSERT SUITE BY FREDERICK ELKINGTON, comprising a set of four serving spoons and matching sugar sifter spoon, decorated in the Japanese taste, maker's mark 'FE', Birmingham 1879, with maker's case. £400-£600



490

A SET OF SIX GEORGE V SILVER-GILT COFFEE SPOONS, with wavy engine-turned decoration to the handles and backs of the bowls, by Adie Bros, Birmingham 1927, cased, retailed by Mappin & Webb, Queen Victoria Street, London E C., lengths 9cm. £100-£120



491

A GEORGE VI SILVER SPARROW BEAK CREAM
JUG, with scroll handle, Chester 1940, height 4.5cm
£80–£120

492

A PAIR OF SILVER PEPPER MILLS,
of baluster form, by J. A. Campbell,
London 1991, height 11cm.
£200–£240



493

A SILVER TUMBLER CUP BY GERRY SUMMERS, of shaped
circular form, with slightly textured finish, the rim of foldover
form, maker's mark GGS, Millenium hallmark for London 2000,
'999' standard, diameter 8cm.
£150–£200

Gerry Summers was born near Aberdeenshire in 1955. He studied at the Central School of Art and Design in London. Registering his mark with the London assay office in 1983, he is based in Barnes, London.



494

GEORG JENSEN: A DANISH SILVER SUGAR VASE AND CREAM JUG, each of small capacity, with ballflower decorated handles the body of each supported by plant forms and on circular foot, each stamped 'Sterling' and numbered '235A', each height 9.5cm. £200-£300



495

GEORG JENSEN: A DANISH SILVER DISH, polished and with border of repoussé fruiting vine, import marks for London 1999, numbered '394' and 'Z10', diameter 14cm.

£100-£150



496

GEORG JENSEN: A DANISH SILVER CENTREPIECE OF CANDLESTICK FORM, with bunches of grapes suspended from the drip pan and with wrythen, polished column, on broad base, import marks for London 1992, stamped 'Sterling', numbered 263A, height 16cm. £600-£800



497

A VICTORIA SILVER BREAD BASKET, the basket weave body relief-decorated with ears of corn, within a moulded border cast at intervals with bunches of grapes, the centre with engraved cursive monogram, having a swing handle, by Henry Wilkinson, London 1862, width 33cm.

£750-£900



498

A THREE PIECE SILVER TEA AND COFFEE SERVICE, comprising tea pot, coffee pot and hot water jug, with bell-shaped lids, scroll thumbpieces and cut card decoration surrounding each spout and handle, by A. Haviland-Nye, London 1971, maximum height 24cm.

£1,000-£1,500



499

A SET OF FOUR VICTORIA SILVER SALTS, circular, repoussé decorated with flower heads and foliage and with 'C' scrolls around a vacant cartouche, each on lion mask and paw feet by John Keith, London 1856, diameter 8cm. £360-£460



500

A SET OF FOUR VICTORIA SILVER BRITANNIA STANDARD TRENCHER SALTS, in early Georgian style, of chamfered rectangular form, by Thomas Bradbury, one pair London 1898, the other pair 1903, width 8cm. £400-£500



501

A PAIR OF GEORGE V SILVER ENTRÉE DISHES AND COVERS, chamfered rectangular and with gadrooned borders and detachable handles, by J. Parkes & Co., London 1936, length 28cm. £2,000-£2,400

End of Sale

All lots are subject to extra charges which may be viewed in Ts and Cs 3, 4, 5 and 10 at the back of this catalogue.

INDEX OF MAKERS

BAUME & MERCIER	395, 402	MOUSSAIEFF	287
ERNEST BOREL	376	MOVADO	371
BOUCHERON	261	MURRLE BENNETT & CO	40, 429
BULOVA	424	JOHN NADAS	131
CARTIER	97, 256–258, 260, 262, 298, 366, 380, 382, 393, 396, 453, 462	OMEGA	375, 381, 383, 385–386, 391, 392, 394, 405, 410, 416–417
CHANEL	406, 415	ABE PASS	137
CHAUMET	263	PATEK PHILIPPE	377, 379
CHOPARD	399, 403	RODNEY RAYNER	264
CROPP & FARR	21	ROLEX	363, 398, 400, 408, 411, 414
DUNHILL	460	SAMPSON MORDAN & CO.	428, 432–433, 457
EBEL	387	TABBAH	136
GARRARD	362	TAG HEUER	404
ANDREW GRIMA	130	TIFFANY & CO.	54–59
HERMÈS	164	TISSOT	407
INTERNATIONAL WATCH CO.	365, 413, 418	TUDOR	372, 412
GEORG JENSEN	494–496	WALTHAM	360
SARAH JONES	15–16		
LONGINES	384, 388, 390		
MAPPIN & WEBB	95, 274, 422		
CATHERINE MARTIN	160		
MINERVA	389		

DIAMONDS

DIAMONDS ARE ASSESSED ACCORDING TO THE FOUR C'S

1. CARAT WEIGHT

1 Carat equals 0.2 Grams.

2. CUT

The quality of a cut is assessed in terms of its proportions, symmetry & polish.

3. COLOUR

Unless regarded as a 'fancy' coloured diamond, all diamonds are graded on their lack of colour.

4. CLARITY

Diamonds are graded on their freedom from inclusions (within the stone) & blemishes (found on the surface of the stone). They are assessed using 10x magnification.

Please note the four cs of a diamond cannot be fully assessed whilst the stone is mounted. The approximate gradings provided in the condition reports are estimations, made by the specialists whilst the stones were mounted & are for guidance only. If a stone has been unmounted & assessed in a gemmological laboratory, this will be noted in the cataloguing/condition report.

COLOUR GRADES

GIA	CIBJO	TRADITIONAL
D	Exceptional White + (EW+)	Finest White
E	Exceptional White (EW)	Finest White
F	Rare White + (RW+)	Fine White
G	Rare White (RW)	Fine White
H	White (W)	White
I	Slightly Tinted White (STW)	Commercial White
J	Slightly Tinted White (STW)	Top Silver Cape
K	Tinted White (TW)	Top Silver Cape
L	Tinted White (TW)	Silver Cape
M-Z	Tinted Colour (TC)	Cape
Fancy	Fancy Colour	

CLARITY GRADES

GIA	CIBJO	DESCRIPTION
Flawless (FL)	Loupe Clean (LC)	Shows no inclusions or blemishes
Internally Flawless (IF)	Loupe Clean (LC)	Shows no inclusions & only insignificant blemishes
Very Very Slightly Included (VVS1/2)	Very Very Slightly Included (VVS1-2)	Contains minute inclusions which are very difficult for an experienced grader to see with 10x magnification
Very Slightly Included (VS1-2)	Very Slightly Included (VS1-2)	Contains very small inclusions that are difficult to see with 10x magnification
Slightly Included (SI1-2)	Slightly Included (SI1-2)	Contains inclusions that are easily visible with 10x magnification
Imperfect/Included (I1-3)	Pique (P1-3)	Contains inclusions that are obvious with 10x magnification & can often be seen with the naked eye; durability may be affected

NOONANS
MAYFAIR

CONSIGNING NOW

JEWELLERY, SILVER & OBJECTS OF VERTU

16 SEPTEMBER

CLOSING FOR ENTRIES 1 AUGUST

ALL ENQUIRIES: PLEASE CALL 020 7016 1700 OR EMAIL [JEWELLERY@NOONANS.CO.UK](mailto:jewellery@noonans.co.uk)



A SRI LANKAN COLOUR-CHANGE SAPPHIRE AND DIAMOND RING
SOLD ON 26 MARCH HAMMER PRICE: £28,000



COMMISSION FORM

JEWELLERY, WATCHES, SILVER & OBJECTS OF VERTU
17 JUNE 2025

Please bid on my behalf at the above sale for the following Lot(s) up to the price(s) mentioned overleaf. These bids are to be executed as cheaply as is permitted by other bids or any reserve.

I understand that in the case of a successful bid, a premium of 24 per cent (plus VAT if delivered or collected within the UK) will be payable by me on the hammer price of all lots.

Please see the Terms and Conditions of Business for any other charges which may be applicable.

Please ensure your bids comply with the steps outlined below:

Up to £100 by £5
£100 to £200 by £10
£200 to £500 by £20
£500 to £1,000 by £50
£1,000 to £2,000 by £100
£2,000 to £5,000 by £200
£5,000 to £10,000 by £500
£10,000 to £20,000 by £1,000
£20,000 to £50,000 by £2,000

Bids of unusual amounts **will be rounded down** to the bid step below and will **not** take precedence over a similar bid unless received first.

NOTE:

All bids placed other than via our website should be received by 4 PM on the day prior to the sale. Although we will endeavour to execute any late bids, Noonans cannot accept responsibility for bids received after that time. It is strongly advised that you use our online Advance Bidding Facility. If you have a valid email address bids may be entered, and amended or cancelled, online at www.noonans.co.uk right up until a lot is offered. You will receive a confirmatory email for all bids and amendments, Bids posted to our office using this form will be entered by our staff using the same Advance Bidding Facility. **There is, therefore, no better way of ensuring the accuracy of your advance bids than to place them yourself online.**

I confirm that I have read and agree to abide by the Terms and Conditions of Business in the catalogue.

SIGNED

NAME (block capitals)

CLIENT CODE

ADDRESS

TELEPHONE

EMAIL

If successful, payment can be made in the following ways:

Credit/Debit card online via www.noonans.co.uk

Bank Transfer

Bankers: Lloyds; Piccadilly, London; Sort code: 30-96-64; Account No.: 00622865;
Swift Code: LOYDGB2L; IBAN: GB70LOYD30966400622865; BIC: LOYDGB21085

Cheque payable to Noonans

Cash up to a maximum of £5,000

All payments to be made in pounds sterling.

Please note payment is due within five working days of the end of the auction.

YOUR BIDS MAY BE PLACED OVERLEAF



COMMISSION FORM

JEWELLERY, WATCHES, SILVER & OBJECTS OF VERTU
17 JUNE 2025

If you wish to place a 'plus one' bid, please write '+1' next to the relevant bid

Table with 6 columns: LOT NO., £ BID, LOT NO., £ BID, LOT NO., £ BID. Multiple rows for bid entry.

SALEROOM NOTICES:

Any Saleroom Notices relevant to this auction are automatically posted on the Lot Description pages on our website. Prospective buyers are strongly advised to consult the site for updates.

SUCCESSFUL BIDS

Should you be a successful bidder you will receive an invoice detailing your purchases. All purchases are sent by registered post unless otherwise instructed, for which a minimum charge of £12.00 (plus VAT if resident in the UK) will be added to your invoice. All payments for purchases must be made in pounds sterling. Please check your bids carefully.

PRICES REALISED

The hammer prices bid at the auction are posted on the Internet at www.noonans.co.uk in real time. A full list of prices realised appear on our website as the auction progresses. Telephone enquiries are welcome from 9 AM the following day.

NOONANS
MAYFAIR

FORTHCOMING AUCTION

THE IBRAHIM SALEM COLLECTION OF SYRIA & LEBANON

WEDNESDAY 1 OCTOBER 2025

ALL ENQUIRIES PLEASE CONTACT ANDREW PATTISON OR THOMASINA SMITH
ON 020 7016 1700 OR EMAIL BANKNOTES@NOONANS.CO.UK



THE OBERSE AND REVERSE DESIGNS FOR A 500 PIASTRE WHICH ARE THE ONLY RECORD
OF A GORGEOUS FRENCH BANKNOTE THAT WAS NEVER PUT INTO PRODUCTION

CONDITIONS MAINLY CONCERNING BUYERS

1 The buyer

The highest bidder shall be the buyer at the 'hammer price' and any dispute shall be settled at the auctioneer's absolute discretion. Every bidder shall be deemed to act as principal unless there is in force a written acknowledgement by Noonans Mayfair Ltd. ("Noonans") that he acts as agent on behalf of a named principal. Bids will be executed in the order that they are received.

2 Minimum increment

The auctioneer shall have the right to refuse any bid which does not conform to Noonans' published bidding increments which may be found at noonans.co.uk and in the bidding form included with the auction catalogue.

3 The premium

The buyer shall pay to Noonans a premium of 24% on the 'hammer price' and agrees that Noonans, when acting as agent for the seller, may also receive commission from the seller in accordance with Condition 16.

4 Value Added Tax (VAT)

The buyers' premium is subject to the current rate of Value Added Tax if the lot is delivered to or collected by the purchaser within the UK.

Lots marked 'X' are subject to importation VAT of 5% on the hammer price unless re-exported outside the UK, as per the conditions below.

Buyers who wish to hand carry their lots to export them from the UK will be charged VAT at the prevailing rate and importation VAT (where applicable) and will not be able to claim a VAT refund.

Buyers will only be able to secure a VAT free invoice and/or VAT refund if the goods are exported by Noonans or a pre-approved commercial shipper. Where the buyer instructs a pre-approved commercial shipper, proof of correct export out of the UK must be provided to Noonans by the buyer within 30 days of export and no later than 90 days from the date of the sale. Refunds are subject to a £50 administrative fee.

Lots marked '††' are subject to the Standard Rate of VAT, currently 20%, on both the hammer price and buyers' premium.

VAT can only be removed from the hammer price, if goods are exported by Noonans or a pre-approved commercial shipper as per above.

All lots will be subject to VAT on the buyers' premium regardless of whether the lot is exported.

5. Artist's Resale Rights (Droit de Suite)

Lots marked ARR in the catalogue indicate lots that may be subject to this royalty payment.

The royalty will be charged to the buyer on the 'hammer price' and is in addition to the buyers' premium. Royalties are charged on a sliding percentage scale as shown below but do not apply to lots where the hammer price is less than 1000 pounds sterling. All royalty charges are paid in full to The Design and Artists Copyright Society (DACS).

Portion of the hammer price	Royalties
From 0 to £50,000	4%
From £50,000.01 to £200,000	3%
From £200,000.01 to £350,000	1%
From £350,000.01 to £500,000	0.5%
Exceeding £500,000	0.25%

VAT does not apply to the Artist's Resale Rights.

6 Payment

When a lot is sold the buyer shall:

- (a) confirm to Noonans his or her name and address and, if so requested, give proof of identity; and
- (b) pay to Noonans the 'total amount due' in pounds sterling within five working days of the end of the sale (unless credit terms have been agreed with Noonans before the auction). Please note that we will not accept cash payments in excess of £5,000 (five thousand pounds) in settlement for purchases made at any one auction.

7 Noonans may, at its absolute discretion, agree credit terms with the buyer before an auction under which the buyer will be entitled to take possession of lots purchased up to an agreed amount in value in advance of payment by a determined future date of the 'total amount due'.

8 Any payments by a buyer to Noonans may be applied by Noonans towards any sums owing from that buyer to Noonans on any account whatever, without regard to any directions of the buyer, his or her agent, whether expressed or implied.

9 Collection of purchases

The ownership of the lot(s) purchased shall not pass to the buyer until he or she has made payment in full to Noonans of the 'total amount due' in pounds sterling.

10 (a) The buyer shall at his or her own expense take away the lot(s) purchased not later than 5 working days after the day of the auction but (unless credit terms have been agreed in accordance with Condition 7) not before payment to Noonans of the 'total amount due'.

(b) The buyer shall be responsible for any removal, storage and insurance charges on any lot not taken away within 5 working days after the day of the auction.

(c) The packing and handling of purchased lots by Noonans staff is undertaken solely as a courtesy to clients and, in the case of fragile articles, will be undertaken only at Noonans' discretion. In no event will Noonans be liable for damage to glass or frames, regardless of the cause. Bulky lots or sharp implements, etc., may not be suitable for in-house shipping.

11 Buyers' responsibilities for lots purchased

The buyer will be responsible for loss or damage to lots purchased from the time of collection or the expiry of 5 working days after the day of the auction, whichever is the sooner. Neither Noonans nor its servants or agents shall thereafter be responsible for any loss or damage of any kind, whether caused by negligence or otherwise, while any lot is in its custody or under its control.

Loss and damage warranty cover at the rate of 1.5% will be applied to any lots despatched by Noonans to destinations outside the UK, unless specifically instructed otherwise by the consignee.

12 Remedies for non-payment or failure to collect purchase

If any lot is not paid for in full and taken away in accordance with Conditions 6 and 10, or if there is any other breach of either of those Conditions, Noonans as agent of the seller shall, at its absolute discretion and without prejudice to any other rights it may have, be entitled to exercise one or

more of the following rights and remedies:

- (a) to proceed against the buyer for damages for breach of contract.
- (b) to rescind the sale of that or any other lots sold to the defaulting buyer at the same or any other auction.
- (c) to re-sell the lot or cause it to be re-sold by public auction or private sale and the defaulting buyer shall pay to Noonans any resulting deficiency in the 'total amount due' (after deduction of any part payment and addition of re-sale costs) and any surplus shall belong to the seller.
- (d) to remove, store and insure the lot at the expense of the defaulting buyer and, in the case of storage, either at Noonans' premises or elsewhere.
- (e) to charge interest at a rate not exceeding 2 percent per month on the 'total amount due' to the extent it remains unpaid for more than 5 working days after the day of the auction.
- (f) to retain that or any other lot sold to the same buyer at the sale or any other auction and release it only after payment of the 'total amount due'.
- (g) to reject or ignore any bids made by or on behalf of the defaulting buyer at any future auctions or obtaining a deposit before accepting any bids in future.
- (h) to apply any proceeds of sale then due or at any time thereafter becoming due to the defaulting buyer towards settlement of the 'total amount due' and to exercise a lien on any property of the defaulting buyer which is in Noonans' possession for any purpose.

13 Liability of Noonans and sellers

(a) Goods auctioned are usually of some age. All goods are sold with all faults and imperfections and errors of description. Illustrations in catalogues are for identification only. Buyers should satisfy themselves prior to the sale as to the condition of each lot and should exercise and rely on their own judgement as to whether the lot accords with its description. Subject to the obligations accepted by Noonans under this Condition, none of the seller, Noonans, its servants or agents is responsible for errors of descriptions or for the genuineness or authenticity of any lot. No warranty whatever is given by Noonans, its servants or agents, or any seller to any buyer in respect of any lot and any express or implied conditions or warranties are hereby excluded.

(b) Any lot which proves to be a 'deliberate forgery' may be returned by the buyer to Noonans within 15 days of the date of the auction in the same condition in which it was at the time of the auction, accompanied by a statement of defects, the number of the lot, and the date of the auction at which it was purchased. If Noonans is satisfied that the item is a 'deliberate forgery' and that the buyer has and is able to transfer a good and marketable title to the lot free from any third party claims, the sale will be set aside and any amount paid in respect of the lot will be refunded, provided that the buyer shall have no rights under this Condition if:

- (i) the description in the catalogue at the date of the sale was in accordance with the then generally accepted opinion of scholars and experts or fairly indicated that there was a conflict of such opinion; or
- (ii) the only method of establishing at the date of publication of the catalogue that the lot was a

'deliberate forgery' was by means of scientific processes not generally accepted for use until after publication of the catalogue or a process which was unreasonably expensive or impractical.

(c) A buyer's claim under this Condition shall be limited to any amount paid in respect of the lot and shall not extend to any loss or damage suffered or expense incurred by him or her.

(d) The benefit of the Condition shall not be assignable and shall rest solely and exclusively in the buyer who, for the purpose of this condition, shall be and only be the person to whom the original invoice is made out by Noonans in respect of the lot sold.

CONDITIONS MAINLY CONCERNING SELLERS AND CONSIGNORS

14 Warranty of title and availability

The seller warrants to Noonans and to the buyer that he or she is the true owner of the property or is properly authorised to sell the property by the true owner and is able to transfer good and marketable title to the property free from any third party claims. The seller will indemnify Noonans, its servants and agents and the buyer against any loss or damage suffered by either in consequence of any breach on the part of the seller.

15 Reserves

The seller shall be entitled to place, prior to the first day of the auction, a reserve at or below the low estimate on any lot provided that the low estimate is more than £100. Such reserve being the minimum 'hammer price' at which that lot may be treated as sold. A reserve once placed by the seller shall not be changed without the consent of Noonans. Noonans may at their option sell at a 'hammer price' below the reserve but in any such cases the sale proceeds to which the seller is entitled shall be the same as they would have been had the sale been at the reserve. Where a reserve has been placed, only the auctioneer may bid on behalf of the seller.

16 Authority to deduct commission and expenses

The seller authorises Noonans to deduct commission at the 'stated rate' and 'expenses' from the 'hammer price' and acknowledges Noonans' right to retain the premium payable by the buyer.

17 Rescission of sale

If before Noonans remit the 'sale proceeds' to the seller, the buyer makes a claim to rescind the sale that is appropriate and Noonans is of the opinion that the claim is justified, Noonans is authorised to rescind the sale and refund to the buyer any amount paid to Noonans in respect of the lot.

18 Payment of sale proceeds

Noonans shall remit the 'sale proceeds' to the seller 35 days after the auction, but if by that date Noonans has not received the 'total amount due' from the buyer then Noonans will remit the sale proceeds within five working days after the date on which the 'total amount due' is received from the buyer. If credit terms have been agreed between Noonans and the buyer, Noonans shall remit to the seller the sale proceeds 35 days after the auction unless otherwise agreed by the seller.

19 If the buyer fails to pay to Noonans the 'total amount due' within 35 days after the auction, Noonans will endeavour to notify the seller and take the seller's instructions as to the appropriate course of action and, so far as in Noonans' opinion is practicable, will assist the seller to recover the

'total amount due' from the buyer. If circumstances do not permit Noonans to take instructions from the seller, the seller authorises Noonans at the seller's expense to agree special terms for payment of the 'total amount due', to remove, store and insure the lot sold, to settle claims made by or against the buyer on such terms as Noonans shall in its absolute discretion think fit, to take such steps as are necessary to collect monies due by the buyer to the seller and if necessary to rescind the sale and refund money to the buyer if appropriate.

20 If, notwithstanding that, the buyer fails to pay to Noonans the 'total amount due' within 35 days after the auction and Noonans remits the 'sale proceeds' to the seller, the ownership of the lot shall pass to Noonans.

21 Charges for withdrawn lots

Where a seller cancels instructions for sale, Noonans reserve the right to charge a fee of 15% of Noonans' then latest middle estimate of the auction price of the property withdrawn, together with Value Added Tax thereon if the seller is resident in the UK, and 'expenses' incurred in relation to the property.

22 Rights to photographs and illustrations

The seller gives Noonans full and absolute right to photograph and illustrate any lot placed in its hands for sale and to use such photographs and illustrations and any photographs and illustrations provided by the seller at any time at its absolute discretion (whether or not in connection with the auction).

23 Unsold lots

Where any lot fails to sell, Noonans shall notify the seller accordingly. The seller shall make arrangements either to re-offer the lot for sale or to collect the lot.

24 Noonans reserve the right to charge commission up to one-half of the 'stated rates' calculated on the 'bought-in price' and in addition 'expenses' in respect of any unsold lots.

GENERAL CONDITIONS AND DEFINITIONS

25 Noonans sells as agent for the seller (except where it is stated wholly or partly to own any lot as principal) and as such is not responsible for any default by seller or buyer.

26 Any representation or statement by Noonans, in any catalogue as to authorship, attribution, genuineness, origin, date, age, provenance, condition or estimated selling price is a statement of opinion only. Every person interested should exercise and rely on his or her own judgement as to such matters and neither Noonans nor its servants or agents are responsible for the correctness of such opinions.

27 Whilst the interests of prospective buyers are best served by attendance at the auction, Noonans will, if so instructed, execute bids on their behalf. Neither Noonans nor its servants or agents are responsible for any neglect or default in doing so or for failing to do so.

28 Noonans shall have the right, at its discretion, to refuse admission to its premises or attendance at its auctions by any person.

29 Noonans has absolute discretion without giving any reason to refuse any bid, to divide any lot, to combine any two or more lots, to withdraw any lot from the auction and in case of dispute to put

up any lot for auction again.

30 (a) Any indemnity under these Conditions shall extend to all actions, proceedings costs, expenses, claims and demands whatever incurred or suffered by the person entitled to the benefit of the indemnity.

(b) Noonans declares itself to be a trustee for its relevant servants and agents of the benefit of every indemnity under these Conditions to the extent that such indemnity is expressed to be for the benefit of its servants and agents.

31 Any notice by Noonans to a seller, consignor, prospective bidder or buyer may be given by first class mail, airmail or email and if so given shall be deemed to have been duly received by the addressee within 48 hours.

32 These Conditions shall be governed by and construed in accordance with English law. All transactions to which these Conditions apply and all matters connected therewith shall also be governed by English law. Noonans hereby submits to the exclusive jurisdiction of the English courts and all other parties concerned hereby submit to the non-exclusive jurisdiction of the English courts.

33 In these Conditions:

(a) 'catalogue' includes any advertisement, brochure, estimate, price list or other publication;

(b) 'hammer price' means the price at which a lot is knocked down by the auctioneer to the buyer;

(c) 'total amount due' means the 'hammer price' in respect of the lot sold together with any premium, Value Added Tax chargeable and additional charges and expenses due from a defaulting buyer in pounds sterling;

(d) 'deliberate forgery' means an imitation made with the intention of deceiving as to authorship, origin, date, age, period, culture or source which is not shown to be such in the description in the catalogue and which at the date of the sale had a value materially less than it would have had if it had been in accordance with that description;

(e) 'sale proceeds' means the net amount due to the seller being the 'hammer price' of the lot sold less commission at the 'stated rates' and 'expenses' and any other amounts due to Noonans by the seller in whatever capacity and howsoever arising;

(f) 'stated rate' means Noonans' published rates of commission for the time and any Value Added Tax thereon;

(g) 'expenses' in relation to the sale of any lot means Noonans charges and expenses for insurance, illustrations, special advertising, certification, remedials, packing and freight of that lot and any Value Added Tax thereon;

(h) 'bought-in price' means 5 per cent more than the highest bid received below the reserve.

34 Vendors' commission of sales

A commission of 15% is payable by the vendor on the hammer price on lots sold.

Insurance is charged at 1.5% of the hammer price.

35 VAT

Commission, illustrations, insurance and expenses are subject to VAT if the seller is resident in the UK.

NOONANS
MAYFAIR

REGIONAL VALUATION DAYS
COINS, MEDALS, BANKNOTES, JEWELLERY,
OBJECTS OF VERTU, SILVER, WATCHES

OUR SPECIALISTS WILL BE AVAILABLE TO OFFER **FREE** AUCTION VALUATIONS
WITH THE OPPORTUNITY TO CONSIGN TO OUR MAYFAIR AUCTIONS
FOR AN APPOINTMENT PLEASE CALL 020 7016 1700 OR EMAIL JEWELLERY@NOONANS.CO.UK



VIEW OUR CALENDAR OF FORTHCOMING VALUATION DAYS AT
WWW.NOONANS.CO.UK

NOONANS MAYFAIR 16 BOLTON STREET MAYFAIR LONDON W1J 8BQ T. 020 7016 1700

AT NOONANS OUR EXPERTISE EXTENDS BEYOND THE KNOWLEDGE WITHIN OUR SPECIALIST DEPARTMENTS TO INCLUDE ALL ASPECTS OF OUR AUCTION HOUSE, FROM OUR PHOTOGRAPHY STUDIO TO OUR ADVANCED PROPRIETARY ONLINE BIDDING SYSTEM.

We're a close-knit team of experts with deep knowledge across our specialist subjects: banknotes, coins, detectorist finds, historical & art medals, jewellery, medals & militaria, objects of vertu, silver, tokens and watches. Focusing on these fascinating items, we share this expertise with an international community of sellers and buyers.

Each sale item that passes through our Mayfair auction house is appraised by an expert recognised as a leading authority in a particular field of interest, ranging from ancient coins and military medals to jewellery and vintage watches. This depth of knowledge across all departments sets us apart from other generalist auctioneers.

SELL WITH US

Respected worldwide for the breadth and depth of our specialist expertise, we can connect you to a broad, deep pool of potential buyers. Over the years, we've brought together an international community of people who share our particular passion. As recognised experts, with a vast store of freely available in-house knowledge and experience, we've earned the trust of buyers across the globe.

Our fees are transparent. Unlike many other auction houses, we don't charge for collecting your lots, photography or marketing and there's no minimum lot charge.

Not surprisingly, our position as a trusted authority, with deep global reach, often leads to the achievement of higher than expected prices at auction.

Free valuation

If you're interested in selling your items and you'd like a free auction valuation, without obligation, our specialists will be happy to help. You can submit online or bring your sale item to a valuation day at our Mayfair auction house or at a regional venue. Alternatively, request a home visit.

BUY WITH US

We're here for you, whether you're an experienced collector with a depth of knowledge or an occasional buyer attracted to a particular piece of jewellery or vintage watch.

Be assured that the item in question has been accurately described and photographed, detailing all available information, from its provenance to its current condition. Be certain that our price estimate is fair and sensible.

Delve deep into our website and you'll discover a vast store of helpful background data, including prices achieved for similar items at previous auctions. Informed and empowered, study our detailed online catalogue, then place your bid in complete confidence.

NOONANS
MAYFAIR



WWW.NOONANS.CO.UK