

NOONANS
MAYFAIR

JEWELLERY, WATCHES, SILVER & OBJECTS OF VERTU

16 SEPTEMBER 2025 AT 12 NOON



FEATURED ABOVE
LOT 308
A 19TH CENTURY
COLOMBIAN EMERALD
AND DIAMOND PENDANT

BACK COVER
LOT 352
A GOLD DOUBLE DIALLED
QUARTER REPEATING À
TOC CALENDAR WATCH
BY D. ARNAUD À MORGES
CIRCA 1780

AUCTION

AN AUCTION OF:
JEWELLERY, WATCHES, SILVER & OBJECTS OF VERTU

DATE:
16 SEPTEMBER 2025 AT 12 NOON

CONTACTS

GENERAL AUCTION ENQUIRIES
AUCTIONS@NOONANS.CO.UK

JEWELLERY & WATCH ENQUIRIES
JEWELLERY@NOONANS.CO.UK

ACCOUNT ENQUIRIES
ACCOUNTS@NOONANS.CO.UK

SHIPPING ENQUIRIES
SHIPPING@NOONANS.CO.UK

BANK DETAILS

BANKERS: LLOYDS
ADDRESS: PICCADILLY, LONDON
SORT CODE: 30-96-64
ACCOUNT NO.: 00622865
SWIFT CODE: LOYDGB2L
IBAN: GB70LOYD30966400622865
BIC: LOYDGB21085

BOARD OF DIRECTORS

PIERCE NOONAN
CHAIRMAN AND CEO

NIMROD DIX
DEPUTY CHAIRMAN

ROBIN GREVILLE
CHIEF OPERATING OFFICER

CHRISTOPHER WEBB
CLIENT LIAISON DIRECTOR (NUMISMATICS)

AUCTION AND CLIENT SERVICES

PHILIPPA HEALY
ADMINISTRATION DIRECTOR
(ASSOCIATE DIRECTOR)
PHILIPPA@NOONANS.CO.UK
T. 020 7016 1775

ANNA HOPPER
SENIOR ADMINISTRATOR
ANNA@NOONANS.CO.UK
T. 020 7016 1700

SOFIA BUSACCA
ADMINISTRATOR
SOFIA@NOONANS.CO.UK
T. 020 7016 1700

LOUIS OCONNOR
ADMINISTRATOR
LOUIS@NOONANS.CO.UK
T. 020 7016 1700

CHRISTOPHER MELLOR-HILL
HEAD OF CLIENT LIAISON (ASSOCIATE DIRECTOR)
CHRISTOPHER@NOONANS.CO.UK
T. 020 7016 1771

JAMES CARVER
CLIENT LIAISON
JBC@NOONANS.CO.UK
T. 020 7016 1770

CHRIS FINCH HATTON
CLIENT LIAISON
FINCH@NOONANS.CO.UK
T. 020 7016 1754

JAMES KING
SALEROOM AND FACILITIES MANAGER
JAMES@NOONANS.CO.UK
T. 020 7016 1755

IAN ANDERSON
CHIEF TECHNOLOGY OFFICER
(ASSOCIATE DIRECTOR)
IAN@NOONANS.CO.UK
T. 020 7016 1751

JEWELLERY SPECIALISTS

FRANCES NOBLE FGA DGA
HEAD OF JEWELLERY DEPARTMENT
(ASSOCIATE DIRECTOR)
FRANCES@NOONANS.CO.UK
T. 020 7016 1781

RACHEL BAILEY FGA DGA
JEWELLERY SPECIALIST
RACHEL@NOONANS.CO.UK
T. 020 7016 1784

LAURA SMITH FGA DGA
JEWELLERY SPECIALIST
LAURA@NOONANS.CO.UK
T. 020 7016 1782

JESSICA EDMONDS FGA DGA
JEWELLERY SPECIALIST
JESSICA@NOONANS.CO.UK
T. 020 7016 1783

WATCH SPECIALIST

JOANNE LEWIS
WATCH SPECIALIST
JOANNE@NOONANS.CO.UK
T. 020 7016 1785

OBJECTS OF VERTU SPECIALIST

MICHAEL WELCH
SPECIALIST
MICHAEL@NOONANS.CO.UK
T. 020 7016 1700



ORDER OF SALE

JEWELLERY, WATCHES, SILVER & OBJECTS OF VERTU

TUESDAY 16 SEPTEMBER AT 12 NOON

JEWELLERY	1-340
WATCHES	341-420
SILVER & OBJECTS OF VERTU	421-456

VIEWING

MONDAY 8 SEPTEMBER **TRADE VIEWING BY APPOINTMENT ONLY** 10 AM-4.30 PM

THURSDAY 11 SEPTEMBER 10 AM-4.30 PM

FRIDAY 12 SEPTEMBER 10 AM-4.30 PM

SUNDAY 14 SEPTEMBER 12 NOON-4 PM

MONDAY 15 SEPTEMBER 10 AM-4.30 PM

NO VIEWING ON SALE DAY

ALL LOTS ARE AVAILABLE TO VIEW ONLINE WITH FULL ILLUSTRATIONS
AND CONDITION REPORTS AT WWW.NOONANS.CO.UK

SEPTEMBER TO OCTOBER VALUATION DAYS

PLEASE CALL 020 7016 1700 OR EMAIL JEWELLERY@NOONANS.CO.UK FOR AN APPOINTMENT

BATH

11 SEPTEMBER 10 AM-3 PM

LANSDOWN GROVE HOTEL

LANSDOWN ROAD, SOMERSET, BA1 5EL

BERKHAMSTED

4 SEPTEMBER & 2 OCTOBER

10 AM-2 PM

TOWN HALL, 196 HIGH STREET,

BERKHAMSTED, HP4 3AP

BLACKHEATH

24 SEPTEMBER 10 AM-2 PM

THE CONSERVATOIRE

19-21 LEE ROAD, LONDON, SE3 9RQ

BURY-ST-EDMUNDS

20 OCTOBER 11 AM-4 PM

THE ANGEL HOTEL

3 ANGEL HILL, SUFFOLK, IP33 1LT

HAMPSTEAD

3 SEPTEMBER & 1 OCTOBER

11 AM-4 PM

BURGH HOUSE

NEW END SQUARE, LONDON, NW3 1LT

MARLOW

2 SEPTEMBER & 7 OCTOBER

10 AM-3 PM

DANESFIELD HOUSE HOTEL

HENLEY ROAD, MEDMENHAM
BUCKINGHAMSHIRE, SL7 2EY

NORWICH

29 SEPTEMBER 11 AM-4 PM

MAIDS HEAD HOTEL

20 TOMBLAND, NORFOLK, NR3 1LB

PETERSFIELD

18 SEPTEMBER & 16 OCTOBER

10 AM-3 PM

SKY PARK FARM, HAMPSHIRE, GU31 5PT

RICHMOND-ON-THAMES

4 SEPTEMBER 10 AM-3 PM

RICHMOND HILL HOTEL, 144-150

RICHMOND HILL, SURREY TW10 6RW

SHAFTESBURY

12 SEPTEMBER & 17 OCTOBER

10 AM-3 PM

GROSVENOR ARMS HOTEL

HIGH STREET, DORSET, SP7 8JA

WAREHAM

10 SEPTEMBER & 16 OCTOBER

10 AM-2 PM

THE PRIORY HOTEL

CHURCH GREEN, DORSET, BH20 4ND

SUMMARY OF INFORMATION FOR BUYERS

REGISTERING TO BID

New clients must register online to bid (whether in person or in absentia). This can be done via our website www.noonans.co.uk

Registrations will be subject to due diligence and Noonans reserves the right to cancel registrations.

Once registered, any client bidding for the first time online will need to enter their card details so that a security check can be performed to authorise you to bid (www.noonans.co.uk >Your Account > Account Authorisation). This check is secure, your card details are not seen by us and no funds will be deducted.

BIDDING PRIORITY

Please note that we prioritise executing commission bids as early as possible in order to secure the lot for you at the cheapest possible price. It is therefore entirely possible that a lot can sell at your top bid to another bidder. To avoid this happening we offer an optional 'Plus 1' bidding increment facility, whereby if the bidding is against you at your maximum bid the auctioneer will execute one further bid on your behalf. Please note that in the event of identical top bids priority is given to the first bid received.

PLACING BIDS

LIVE BIDDING VIA WWW.NOONANS.CO.UK

You may bid in real time from your computer or mobile device. We provide an optional live video and audio feed of the auctioneer, allowing you to participate in much the same way as attending the auction. You may see your invoice and pay online directly after you've finished bidding. **There is no additional charge for this facility.**

ADVANCE BIDDING VIA WWW.NOONANS.CO.UK

We strongly advise this method if you wish to leave bids in advance as it is the easiest, most accurate and flexible way to leave your bids and gives you total control over them right up to the point that the lot is offered for sale. Bids made online cannot be seen by others and only become live at the point the lot is being sold. Up until this time your bids can be easily altered or cancelled. An automated email is sent to confirm any changes made. **There is no additional charge for online bidding.**

ADVANCE BIDDING VIA POST, EMAIL OR TELEPHONE

Whilst we are still happy to execute all bids submitted to us using post, email or telephone, it should be noted that all bids left with us in these ways will be entered at our offices using exactly the same bidding facility to which all our clients have access. **There is, therefore, no better way of ensuring the accuracy of your advance bids than to place them yourself online.**

If you are registered with Noonans you may bid by email to bids@noonans.co.uk or by telephone to 020 7016 1700.

All bids placed by email or telephone must be received before 4 PM on the day preceding the sale.

A bidding form is included in the back of this catalogue. If you wish to use this please fill it in carefully, to include all relevant information. Please ensure that you post this form so that it arrives, at the latest, the day before the sale.

BIDDING IN THE AUCTION ROOM

You are very welcome to attend the auction and bid in person if you are registered with Noonans. Please note that the auction room is situated on the third floor of a Georgian building which doesn't have a lift. You may pay for and collect your lots during the auction.

SALEROOM NOTICES

Should the description of a lot need to be amended after the publication of this catalogue, the amendments will appear automatically on the Noonans website, www.noonans.co.uk. All such amendments are also incorporated in the List of Saleroom Notices pertaining to this auction which are posted separately on the website. The auctioneer will refer to any notices at the time any affected lot is offered for sale.

CATALOGUE ILLUSTRATIONS & THE INTERNET

Prospective bidders are reminded that the Noonans website features high-resolution colour illustrations of every lot in this auction. There may also be additional illustrations of any lot.

BUYERS' PREMIUM

The rate for this sale is 24% of the Hammer Price (+ VAT where applicable).

IMPORTATION VAT

Lots marked 'X' are subject to importation VAT of 5% on the Hammer Price unless re-exported outside the UK, as per Noonans Terms & Conditions of Business.

From 1 January 2021 importation VAT may be levied by EU countries on lots sold by Noonans and subsequently imported into those countries. Although Noonans is unable to advise buyers on customs regulations in their country of domicile, there is further information regarding EU importation VAT rates for collectable items in the Terms and Conditions published on the Noonans website.

ARTISTS RESALE RIGHTS (DROIT DE SUITE)

Droit de Suite is a royalty payable to a qualifying artist or their estate every time the artist's work is sold at auction or by an art market professional during the artist's lifetime and for a period of up to 70 years following the artist's death. Royalties are calculated on a sliding percentage scale based on the hammer price. Lots subject to this royalty payment are marked with ARR in the catalogue.

TREATED GEMSTONES

It is common practice for many gemstones to be subject to various treatments to improve their appearance. Sapphires and rubies are routinely heat treated to improve their colour and clarity, emeralds may be treated with oils or resin, other gemstones may be subject to treatments such as staining, irradiation or coating. Jade may be bleached, polymer/resin filled or dyed, or a combination of treatments used. Bidders should be aware that, unless stated to the contrary in the catalogue description, it should be assumed that the gemstones may be treated. Where reports are provided from gem laboratories, the opinions as to gradings and treatments of stones may differ slightly between laboratories and Noonans cannot be held responsible for any discrepancies.

UNMOUNTED GEMSTONES

Please note that VAT at 20% is payable on the Hammer price for unmounted diamonds, rubies, sapphires and emeralds. Relevant lots are marked with an asterisk *. See www.gov.uk/guidance/the-margin-and-global-accounting-scheme-vat-notice

EXPORT OF ORGANIC MATERIALS

Lots marked 'Y' are subject to CITES legislation. Organic materials, such as coral and tortoiseshell may be covered by CITES legislation and this may or may not impact export to other countries. Please be aware that it is the buyer's responsibility to arrange for any CITES export licences for their purchases. Please see www.cites.org. In addition to CITES, mother-of-pearl, coral, and tortoiseshell, if imported into the USA, will be subject to USA Fish and Wildlife regulations.

WATCHES

All watches are sold as viewed.

Please note that watches with water-resistant cases have been opened to identify the movement and so will no longer be water-resistant unless a service to reseal the watch is undertaken at the buyer's expense.

Watches may have been repaired during the course of their lifetime and Noonans do not guarantee the authenticity of any individual component parts.

In some circumstances we are unable to ship the watch with its strap due to certain import restrictions regarding material derived from endangered or protected species.

PRICES REALISED

The hammer prices of lots sold at Noonans auctions are posted at www.noonans.co.uk in real time and telephone enquiries are welcome from 9 AM on the day after the auction.

PAYMENT

You may access your invoice shortly after the hammer has fallen on your last lot. As we weigh lots at the time of cataloguing most shipping is already calculated, enabling you to settle your account and receive your lots in a timely fashion. Auction attendees may pay and collect during the course of the auction as soon as they have bid on their last lot.

[Full Terms and Conditions of Business](#) are available to read in the back of this catalogue and on our website.

CONTACTS

GENERAL SUPPORT

auctions@noonans.co.uk
020 7016 1700 or from overseas
(+44) 20 7016 1700

WEBSITE AND LIVE BIDDING SUPPORT

[Ian Anderson](mailto:ian@noonans.co.uk)
ian@noonans.co.uk
020 7016 1700 or from overseas
(+44) 20 7016 1700

NOONANS
MAYFAIR

CONSIGNING NOW

WATCHES

25 NOVEMBER 2025

CLOSING FOR ENTRIES 17 OCTOBER

ALL ENQUIRIES:

020 7016 1700

JEWELLERY@NOONANS.CO.UK



A GOLD RECTANGULAR PURSE/TRAVEL TIMEPIECE BY CARTIER, REF. 5463, CIRCA 1955
SOLD ON 17 JUNE 2025 HAMMER PRICE: £5,500



JEWELLERY

LOT
214



1 AN EARLY 20TH CENTURY AQUAMARINE AND SEED PEARL PENDANT, the pierced quatrefoil with swag decoration and set throughout with circular-cut aquamarines and seed pearls, to a similarly-set knifewire drop terminating in a pear-shaped aquamarine, the whole suspended by a curb-link chain, mounted in gold, *pendant length 8cm.* £200–£300



2 AN EARLY 20TH CENTURY PENDANT, the principal circular-cut yellow sapphire within a seed pearl target surround, below pierced marquise-shaped links spaced by two similarly-cut yellow sapphires, suspended by a trace-link chain, mounted platinum and gold, stamped '15CT', *length 42cm.* £300–£500



3 A LATE 19TH CENTURY ENAMEL AND DIAMOND HEART BROOCH, the red and white enamel heart with dot decoration and a central old brilliant-cut diamond, with a bow surmount and foliate detailing to either side set with rose-cut diamonds, mounted in silver and gold, *length 37mm.* £200–£300



4 AN EARLY 20TH CENTURY SAPPHIRE AND DIAMOND BAR BROOCH, of tapering form and set with step and trapezoid-cut sapphires and single-cut diamonds, mounted in platinum and gold, *length 6.3cm.* £300–£500

5 A GEM-SET SUITE, CIRCA 1900, the lozenge-shaped brooch set with a circular-cut almandine garnet with similarly-cut peridots to the cardinal points, with seed pearl-set foliate detailing between, the earrings en suite, mounted in gold, fitted case, *brooch length 40mm, earring length 19mm.* £300–£500

6

A CULTURED PEARL AND DIAMOND PENDANT, of garland design, set throughout with rose-cut diamonds and seed pearl highlights, suspending a central cultured pearl drop within and with further cultured pearl drop below, to a similarly-set diamond bale, mounted in silver and gold, later adapted, length 6cm. £200–£300



7

A PAIR OF EARLY 20TH CENTURY DIAMOND EAR PENDANTS, of double hoop design, set throughout with single-cut diamonds, mounted in platinum, (later fittings), length 40mm. £600–£800

8

AN EARLY 20TH CENTURY JABOT PIN, designed as an arrow, set with rose-cut diamonds and calibre-cut sapphires, with a briolette-cut rock crystal terminal, mounted in silver and gold, length 7.4cm. £80–£120



9

AN ANTIQUE NATURAL PEARL STICK PIN, with rose-cut diamond highlights, mounted in silver and gold, pearl measuring approximately 6.8 x 6.4mm. £400–£500

According to a verbal report from GCS, the pearl is of natural saltwater origin. Verbal report number 5785-3129.



10

A **HEART PENDANT**, the bicoloured heart set with a circular-cut white gemstone, suspended from an 18ct gold serpent-link chain, pendant stamped '750', clasp with UK hallmark, *pendant length 14mm, chain length 41.5cm.* **£200–£300**



11

A **DIAMOND HALF ETERNITY RING**, channel-set to the front with a row of baguette-cut diamonds, mounted in 18ct gold, UK hallmark, *total diamond weight approximately 1.00 carat, ring size M.* **£300–£500**



12

A **DIAMOND ETERNITY RING**, set throughout with brilliant-cut diamonds, *ring size I–J.* **£150–£200**



13

AN **AQUAMARINE AND DIAMOND RING**, of crossover design, set with a circular-cut aquamarine with brilliant-cut diamonds to either side, mounted in 9ct gold, UK hallmark, *ring size L.* **£120–£150**

14

AN **ANTIQUE SEED PEARL NECKLACE**, of multi-row torsade design, gold clasp, *length 37cm.* **£400–£600**



15

A 9CT GOLD TORQUE, 1976, of ropetwist design, partial maker's mark probably for Tiffany & Co., UK hallmark, *inner diameter 12cm.* £120–£150



16

AN EARLY 20TH CENTURY PEARL AND DIAMOND BAR BROOCH, FRENCH, the knifewire set with pearls and old brilliant-cut diamonds, mounted in gold, (pearls untested), French assay mark, engraved 'Lacloche Frères', *length 53mm.* £200–£300

17

AN EARLY 20TH CENTURY GOLD AND ENAMEL CHAIN, the baton-shaped links with pale blue guilloché enamel, with fine belcher-link chain between and a similarly enamelled fleur-de-lys clasp, together with a small gilt metal locket, *chain length 54cm.*

£300–£500





18

OF NAVAL INTEREST: A ROYAL NORTHERN YACHT CLUB ENSIGN BROOCH, the blue enamel flag applied with diamond-set fouled anchor and crown, mounted in 9ct gold, rubbed hallmark, maker's mark 'DJG', length 30mm. £300-£500

Founded as the Northern Yacht Club in 1824, it received its Royal Charter in 1830 and became the Royal Northern Yacht Club. In 1978, Royal Northern Yacht Club (RNYC) and Royal Clyde Yacht Club (RCYC) merged to become the Royal Northern & Clyde Yacht Club.

19

TWO REGIMENTAL BROOCHES, the first a Durham Light Infantry green and red enamelled brooch, the second a Royal Corps of Signals bar brooch, stamped 9ct, first length 27mm. £150-£200



20

A 9CT GOLD AND DIAMOND RAF WINGS BROOCH, with crown surmount and enamel decoration, maker's mark 'J.V.B', Birmingham hallmark, length 5.2cm. £180-£220



21

A 19TH CENTURY SCOTTISH KILT PIN, in the form of a dirk, the shaped agate panels with briolette-cut amethyst and smoky quartz highlights, below a similarly-cut citrine finial, mounted in gold and with engraved detailing throughout, length 10.5cm. £400-£600

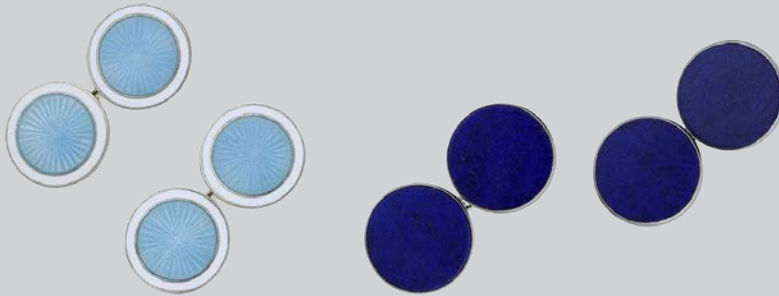
22

A COLLECTION OF ANTIQUE STICK PINS, including enamelled and gem-set examples, depicting dogs, hunting themes, etc., various lengths. (10) £240-£300



23

A PAIR OF BLACK HARDSTONE CUFFLINKS RETAILED BY DAVID MORRIS, CIRCA 1990, the cylindrical batons with ropetwist connectors, mounted in 18ct gold, sponsor's mark 'DM', Birmingham import mark, with maker's case, baton length 20mm. £200-£400

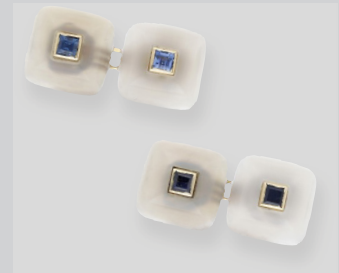


24

TWO PAIRS OF CUFFLINKS, the first with blue and white enamel decoration, the second set inlaid with circular-shaped lapis lazuli panels, both to chain connectors, first with assay mark and stamped '925', panel diameters 14mm. £150-£200

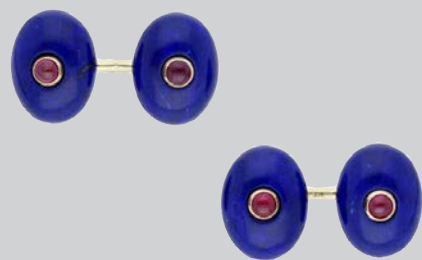
25

A PAIR OF FRENCH CHALCEDONY AND SAPPHIRE CUFFLINKS, the square domed chalcedony terminals each centred with a calibre-cut sapphire, with chain connectors, French assay marks, terminal width 11mm. £500-£600



26

A PAIR OF LAPIS LAZULI AND RUBY CUFFLINKS, the oval lapis lazuli cabochons each centred with a ruby cabochon, with chain connectors, stamped '750', terminal dimensions 14.5 x 11mm. £300-£500



27

A GENTLEMAN'S DRESS SET, comprising a pair of cufflinks and pair of studs, the circular panels centred with single and rose-cut diamond and calibre onyx detail, within crosshatched white hardstone surrounds, in bicolour mounts, stamped '585', cased, cufflink diameters 14.5mm. £600-£800



28

A GEM-SET BROOCH/PENDANT, POSSIBLY GERMAN, the textured rectangular panel with raised polished border, supporting a central applied foliate motif set with graduated diamonds, a cultured pearl and a green tourmaline, stamped '585', panel measures 35 x 23mm. **£200–£300**



29

A GEM-SET RING, POSSIBLY GERMAN, the oval openwork panel of foliate design and set with a step-cut green tourmaline, an oval-cut pink tourmaline and a circular-cut citrine, between similar foliate shoulders, ring size M.

£150–£200



30

AN 18CT GOLD RING BY EDWARD VAUGHTON, 1901, of buckle design, maker's mark, Chester hallmark, ring size M.

£200–£300



31

A DIAMOND CLUSTER RING, designed as three flowerhead clusters set throughout with brilliant-cut diamonds of brown tint, (diamonds untested for natural colour), total diamond weight approximately 1.00 carat, ring size N.

£200–£300



32

A GEM-SET CORONET BROOCH, the textured coronet gem-set and with pearl highlights, (pearls untested), length 40mm. **£400–£500**

According to a PMI test on the XRF analyzer the brooch is testing as 18ct gold.



33

AN ANTIQUE DIAMOND OWL BROOCH, the gold bar applied with two owls, set throughout with rose-cut diamonds and with garnet cabochon eyes, mounted in silver and gold, length 45mm.

£300–£500

34

A PAIR OF 9CT GOLD NOVELTY CUFFLINKS, designed as carp, to hinged T-bar terminals, UK hallmark, carp length 30mm.

£200–£300



35

A PHEASANT STICK PIN, realistically modelled as a pheasant in flight, set throughout with rose-cut diamonds and with enamel decoration, mounted in silver and gold, cased, length 7.5cm.

£200–£260

36

A GOLD STICK PIN, modelled in the round as an eagle grappling a coiled serpent, with textured detail throughout, length of terminal 20mm.

£360–£400

According to a PMI test on the XRF Analyzer, the terminal is testing as 18ct gold.

37

AN EARLY 20TH CENTURY PHEASANT BAR BROOCH, realistically modelled as a pheasant in flight, with enamel decoration and blister pearl body, (pearl untested), stamped '15CT', length 5cm.

£150–£200





38

A GOLD COIN BRACELET, set throughout with 19 Ottoman Empire 50 Kuruş gold coins, length 16cm.

£4,000–£5,000



39

A HARDSTONE CAMEO RING, the curved tiger's-eye cameo carved to depict a classical female profile, ring size P.

£80–£120

According to a PMI test on the XRF analyzer, the ring is testing as 9ct gold.



40

A BLOODSTONE INTAGLIO SIGNET RING, carved to depict the crest for Carew, a heraldic antelope trippant, mounted in 9ct gold, Birmingham hallmark, ring size M.

£120–£150

41

A COLLECTION OF ANTIQUE STICK PINS, including various diamond and gem-set examples, depicting wishbones, horseshoes, flowerheads, etc., various lengths. (14)

£240–£300





42

A COIN PENDANT AND RING, the George V half sovereign, 1911, within pendant mount, suspended from a gilt chain, and a United States of America 1 dollar coin, 1853, within ring mount, ring stamped '585', ring size L.
£400–£600



43

TWO ENAMEL PENDANTS, the first inset with red enamel within a cabochon ruby surround, to a pear-shaped cabochon ruby set bale, the second inset with blue enamel with ropetwist decoration and cabochon sapphire set bale, with gilt back plate, bale stamped 22k, first pendant length 44.5mm.
£400–£600

44

A PROOF HALF SOVEREIGN, 1980, in original fitted case. £150–£200





45

A GEM-SET SPRAY BROOCH, CIRCA 1950, the single-cut diamond stems issuing a floral bouquet of assorted vari-cut gemstones, including rubies, sapphires, emeralds and diamonds, including two diamonds of yellow tint, the whole tied by a graduated ribbon of old brilliant-cut diamonds entwined around a textured scroll motif, (one ruby synthetic, diamonds untested for natural colour), total diamond weight approximately 3.60 carats, length 6cm. £2,000–£3,000



46

A PAIR OF GEM-SET EARRINGS, the half hoops each channel-set with two rows of calibré-cut vari-coloured gemstones, stamped '585, 14k', length 21mm. £400–£600



47

A GEM-SET GIARDINETTO BROOCH, the ropetwist basket issuing a textured foliate bouquet with flowerheads set with vari-cut gemstones, to include opal, sapphire, ruby, etc., (some gemstones deficient), stamped '14K', length 48mm. £500–£600

48

A CULTURED PEARL AND ENAMEL GOLD NECKLACE, the reeded oval beads spaced by vari-coloured enamel boules with applied dot decoration, between foliate capped cultured pearls, retailer's pouch by A. E. Betteridge, length 82cm. £4,000–£5,000

Provenance: The necklace was purchased from A E Betteridge of New York.

According to a PMI test on the XRF Analyzier, the necklace is testing as 18ct gold.





49

AN AMETHYST NECKLACE, the fancy curb-link chain spectacle-set to the front with a fringe of circular-cut amethysts, mounted in 18ct gold, UK import mark, Italian assay mark, length 41cm. £180-£220



50

TWO GEM-SET RINGS, comprising a marquise-shaped synthetic corundum ring with ropetwist detailing and cushion-shaped amethyst ring, the second stamped '18CT', ring size O and M. £200-£300

51

AN AMETHYST BRACELET, of curb-link design, set with oval mixed-cut amethysts, stamped '375', maker's mark 'A*D', length 20cm. £150-£200



52

A CULTURED PEARL NECKLACE, the graduated strand of cultured pearls to a pierced barrel-shaped clasp, stamped '18Kt', length 44.5cm. £200-£300

53

AN AMETHYST AND DIAMOND PENDANT, the cable-link chain leading to two circular-cut amethysts with a marquise-cut diamond between, suspending baguette-cut diamonds above a similarly-cut amethyst drop, total diamond weight approximately 0.90 carat, length 45cm. **£400-£600**



54

A DIAMOND SINGLE STONE RING, the brilliant-cut diamond, weighing 0.23 carat, mounted in platinum, UK hallmark, ring size K-L. **£200-£300**

55

A DIAMOND CLUSTER RING, CIRCA 1890, set with old brilliant-cut diamonds, mounted in silver and gold, stamped '18CT', total diamond weight approximately 0.65 carat, ring size O. **£200-£300**



56

AN AMETHYST FRINGE NECKLACE, the cable-link chain leading to a series of alternating oval-cut amethysts and seed pearls, suspending similarly-set drops, mounted in 9ct gold, UK hallmark, length 42cm. **£200-£300**





57

A DIAMOND HEART NECKLACE, the foxtail-link chain leading to a heart pavé-set with brilliant-cut diamonds, stamped '14K', total diamond weight approximately 1.30 carats, length 40cm. £400-£600



58

A PAIR OF DIAMOND HEART EARRINGS BY BUCHERER, the bicoloured hearts set throughout with brilliant-cut diamonds, maker's mark 'CB', stamped '750', maker's case, total diamond weight approximately 0.70 carat, length 13mm.

£400-£600



59

A DIAMOND RING AND EARRING SUITE, of stylised heart design, pavé-set with brilliant-cut diamonds within a surround of calibré-cut sapphires, stamped 'K18', total diamond weight approximately 6.00 carats, ring size M-N, earring length 21mm.

£2,000-£3,000

60

A DIAMOND LINE BRACELET, claw-set throughout with brilliant-cut diamonds, stamped 'K18', total diamond weight approximately 6.30 carats, length 19cm.

£2,000-£3,000



61

A 'HAPPY DIAMOND' PENDANT BY CHOPARD, the glazed heart revealing a 'floating' brilliant-cut diamond, suspended from an 18ct gold cable-link chain, signed, numbered, European convention mark, *pendant length 16mm, chain length 42.5cm.*

£800-£1,200



62

A LAPIS LAZULI HEART PENDANT, the carved lapis lazuli heart within a polished surround and brilliant-cut diamonds to the surmount, stamped '14K 585', *length 39mm.*

£200-£300



63 Y

AN 18CT GOLD 'HAPPY HEARTS' BANGLE BY CHOPARD, the principal mother-of-pearl heart terminal bordered by brilliant-cut diamonds, the smaller terminal enclosing a 'floating' diamond, signed, numbered, stamped 'AU750', European convention mark, *inner diameter 6cm.*

£700-£900



64

A DIAMOND BANGLE, the tapered 9ct gold cuff inlaid to each terminal with a brilliant-cut diamond, UK hallmark, *inner diameter 6.3cm.*

£300-£500





65

A PAIR OF CULTURED PEARL AND DIAMOND DROPS, each set with a row of baguette-cut diamonds suspending a baroque-shaped cultured pearl drop below, total diamond weight approximately 1.00 carat, length 48mm. **£300–£500**



66

A DIAMOND FIVE STONE RING, set with a graduated row of old brilliant-cut diamonds, mounted in 18ct gold, UK hallmark, total diamond weight approximately 1.25 carats, ring size O. **£500–£700**



67

AN EMERALD AND DIAMOND RING, set with alternating step-cut emeralds and old brilliant-cut diamonds, stamped '18CT' and 'PLATINUM', total diamond weight approximately 0.60 carat, ring size N. **£1,000–£1,500**



68

A DIAMOND RING, the tapered band concave to the centre and pavé-set with a cluster of brilliant-cut diamonds, mounted in 9ct gold, UK hallmark, total diamond weight approximately 0.40 carat, ring size S. **£300–£500**

69

A CULTURED PEARL BRACELET AND NECKLACE, the three rows of cultured pearls to a clasp set with circular-cut sapphires and single-cut diamonds, together with a single-row necklace, (one strand to bracelet broken), stamped '375' and '9K' respectively, lengths 17.5cm and 40cm. **£100–£150**





70

A THREE ROW CULTURED PEARL CHOKER NECKLACE, the cultured pearls, measuring approximately 6.5mm, to a late 19th century diamond cluster clasp, centred with a later cultured pearl, mounted in silver and gold, total diamond weight approximately 1.60 carats, length 38.5cm. £800–£1,000

71

A CULTURED PEARL AND DIAMOND DRESS RING, of openwork design, set with two cultured pearls with undulating rows of graduated brilliant-cut diamonds between, stamped '750', numbered '8096' and with maker's mark 'P*G', ring size L–M. £100–£150



72

A DIAMOND STAR BROOCH, CIRCA 1890, set throughout with old brilliant and rose-cut diamonds, mounted in silver and gold, total diamond weight approximately 2.20 carats, length 36mm. £1,200–£1,500

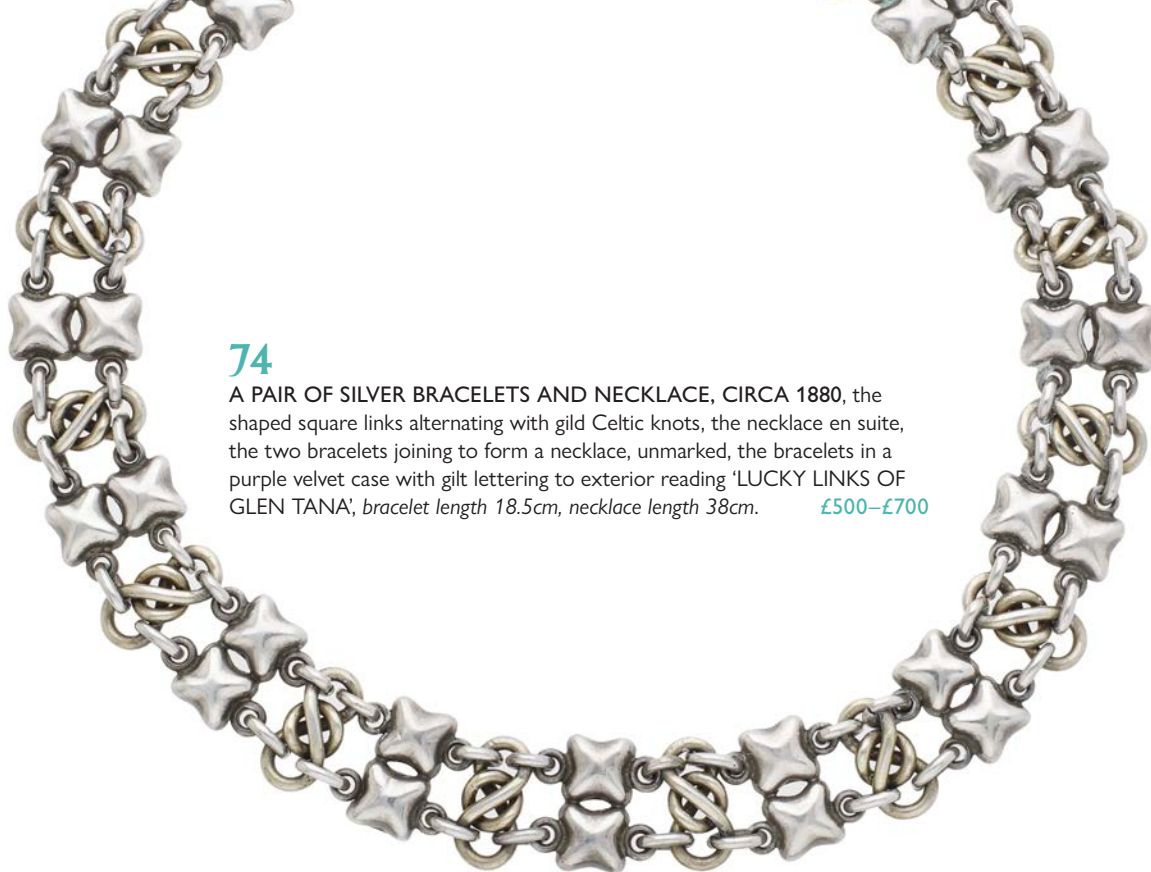


73

A SILVER FIGURAL RING BY MOSHEH OVED, CIRCA 1940, the angular design modelled as a lamb, with smooth coat, its head downcast, with gold bead eyes, unmarked, ring size M½. £800–£1,200

The Polish-Jewish immigrant, Mosheh Oved (1885–1958), also known by his anglicised name Edward Good, was a charismatic and talented jeweller, sculptor, poet and writer. He came to London around 1902 and trained as a watch maker. Initially based in Fetter Lane, Holborn, he later moved to 1, New Oxford Street. In 1938 he became the owner of a celebrated Bloomsbury antique shop called Cameo Corner, in Museum Street, near the British Museum. By now, a world expert on cameos and a highly original jeweller, Oved was an eccentric character, often seen dressed in long flowing purple velvet robes, entertaining his customers (which included Queen Mary) with stories and anecdotes.

According to one story, whilst sheltering in the basement of Cameo Corner during the Blitz, Oved first began modelling his animal rings to steady his trembling hands. His first ring was a lamb, perhaps a symbol of the ultimate sacrificial lamb, made from the silver of Oved's own cufflinks, after he learnt that a client's son had been killed in action. Oved went on to make numerous anthropomorphic rings, mostly in silver, but some in gold, modelled as charming animals and birds and often displaying human characteristics.



74

A PAIR OF SILVER BRACELETS AND NECKLACE, CIRCA 1880, the shaped square links alternating with gilt Celtic knots, the necklace en suite, the two bracelets joining to form a necklace, unmarked, the bracelets in a purple velvet case with gilt lettering to exterior reading 'LUCKY LINKS OF GLEN TANAR', bracelet length 18.5cm, necklace length 38cm. £500-£700

Provenance: Sir William Cunliffe Brooks.

Thence by family descent.

'The Lucky Links of Glen Tana' refers to a knot pattern that was seen in a hoard recovered from an ancient cairn on the Glen Tanar estate in 1843. Owned by the Marquess of Huntly, Glen Tanar was first leased to Sir William Cunliffe Brooks, a wealthy Manchester barrister, banker and politician, in the 1860s. His daughter, Amy Brooks, married Charles Gordon, Marquess of Huntly, in 1869. By then Sir William, still a tenant, had fallen in love with the estate and employed over 250 masons to build a large house, cottages for workers, a school, stables, roads and bridges. He purchased Glen Tanar, or Glen Tana as he preferred to call it, from his son-in-law some years later. The Aberdeen Journal on Wednesday 29 March 1843, recorded 'some woodcutters in pursuit of rabbits on the hill of Knockie in Glentanner [sic] accidentally discovered under a cairn an ancient burial place, covered by a large flat stone. On removing this, they found articles including two bronze vessels, capable of holding about two-thirds of a pint, of neat workmanship, cast in rather an elegant shape, with a handle on one side; seventeen spear- or axe-heads of bronze, known among antiquaries by the name of celts; from thirty to forty bronze bracelets; six bronze rings of good workmanship, of different sizes'. An Ordnance Survey Name Book entry relating to the hoard was made in 1865, when Sir William was at Glen Tanar, and it is more than likely that this is when he first came across the hoard and Celtic 'lucky link' emblem.

Sir William commissioned jewellers, to include Phillips Brothers, to create silver bracelets and necklaces using this 'lucky link' knot and gifted them, often as wedding presents, throughout the 1880s and 1890s. Contemporary newspapers record these wedding gifts and often list them as made in silver and gold. In 1894 it is also recorded that Sir William presented the Lady Mayoress of Manchester with an official collar and badge based on the Lucky Links of Glen Tana and made by Phillips Brothers.



All lots are subject to extra charges which may be viewed in Ts and Cs 3, 4, 5 and 10 at the back of this catalogue.



75

A SILVER AND ONYX 'SPHERE' SAUTOIR AND PENDANT, DESIGNED BY REGITZE OVERGAARD FOR GEORG JENSEN, the double-row cable-link long chain spaced by vari-sized polished onyx boules, together with a similarly styled pendant with matching drop, both signed, the sautoir with London hallmark, the pendant stamped '925', maker's case, *first length 100cm.* (2)

£200-£300



76

A SILVER 'SPHERE' SAUTOIR DESIGNED BY REGITZE OVERGAARD FOR GEORG JENSEN, the cable-link long chain spaced by vari-sized polished boules, signed, London hallmark, maker's case, *length 103cm.*

£120-£150

77

A SILVER AND SMOKY QUARTZ 'SPIRIT' PENDANT DESIGNED BY REGITZE OVERGAARD AND A SILVER AND ONYX 'MOONLIGHT GRAPES' RING DEIGNED BY HAROLD NIELSEN FOR GEORG JENSEN, the quartz boule in plain silver girdle mount, on black cord necklace, signed and numbered '475B', the ring set with onyx and silver boules, asymmetrically mounted, signed and numbered '53'; pendant length 30mm, ring size I-J. £160-£200



78

AN 18CT GOLD 'FUSION' RING BY GEORG JENSEN, modelled as three interlocking bands of bicolour design, signed, Danish assay and European convention marks, ring size O. £1,000-£1,200

79

A SILVER 'MÖBIUS' BANGLE BY VIVIANNA TORUN BÜLOW-HÜBE FOR GEORG JENSEN, of tapered twist design, signed 'GEORG JENSEN' and 'TORUN', stamped '925S DENMARK', numbered '206', inner dimensions 7 x 6cm. £150-£200



80

A SILVER BANGLE BY REGITZE OVERGAARD FOR GEORG JENSEN, of tapered oval form, maker's mark, numbered '500', stamped '925', London hallmark, maker's case, inner dimensions 7 x 5.5cm. £160-£200





81 Y

A PAIR OF CULTURED MABÉ PEARL EAR PENDANTS, of pear-shaped drop design, stamped '750', length 35mm. £150–£200



82

A GEM-SET DRESS RING, set with an oval-cut green tourmaline within a surround of brilliant-cut diamonds, the gallery and shoulders set with circular-cut rubies and brilliant-cut diamonds of brown tint, mounted in 18ct gold, (diamonds untested for natural colour), UK hallmark, total diamond weight approximately 2.20 carats, ring size O. £700–£1,000



83

A GEM-SET DRESS RING BY JAHEL, set with an amethyst cabochon with an oval-cut pink tourmaline to either side, each within a surround of brilliant-cut diamonds, to a hinged hoop, signed, stamped '750', ring size M. £800–£1,200



84

AN AQUAMARINE DRESS RING, the cushion-shaped aquamarine in a mount of clustered flowerheads, to a broad textured hoop, stamped '18K', ring size K–L. £500–£700

85

A CULTURED PEARL NECKLACE, the uniform row of cultured pearls, measuring approximately 9.3mm, to a boule-shaped clasp pavé-set with single-cut diamonds, maker's mark 'JKa' for J. Köhle, stamped '750', length 43cm. £100–£150





86

AN AMETHYST AND DIAMOND CLUSTER BROOCH, the oval-cut amethyst claw-set within a brilliant-cut diamond surround, *total diamond weight approximately 2.40 carats, length 35mm.* £600–£800

87

TWO CULTURED PEARL AND GEM-SET NECKLACES, the uniform cultured pearls spaced by six vari-cut amethysts in spectacle settings, together with a similar necklace set with blue topaz, *lengths 94 and 97cm.* £150–£200





88

A LATE 19TH CENTURY AQUAMARINE AND DIAMOND PENDANT, the pear-shaped aquamarine set within a graduated surround of old brilliant-cut diamonds, with foliate surmount and diamond drop below, mounted in silver and gold, suspended by an unassociated cable-link chain, (later adapted), *total diamond weight approximately 1.15 carats, pendant length 3.5cm.*

£1,500–£1,800



89

AN AQUAMARINE PENDANT, the oval-cut aquamarine in a textured collet setting, suspended from an 18ct gold curb-link chain, clasp with UK hallmark, *chain length 46.5cm.*

£200–£300



90

A PAIR OF BLUE ZIRCON AND DIAMOND EARRINGS, each set with an articulated row of brilliant-cut diamonds terminating in a cluster drop set with a circular-cut blue zircon within a surround of brilliant, old brilliant and single-cut diamonds, *total diamond weight approximately 3.70 carats, length 31mm.*

£600–£800

91

A DIAMOND BRACELET, the oval-shaped links alternately set with brilliant-cut diamonds, *total diamond weight approximately 3.00 carats, length 18cm.*

£1,500–£2,000





92

AN AQUAMARINE LARIAT NECKLACE, designed as six rows of faceted aquamarine beads with three highlight strands of woven fancy-link chain, *length* approximately 150cm.

£1,200–£1,500

According to a PMI test on an XRF Analyzer the chains are testing as 18ct gold.



93

A PAIR OF HOOP EARRINGS BY ELSA PERETTI FOR TIFFANY & CO., of tapered design, signed, stamped '750', hoop length 35mm. £600–£800



94

A BAND RING BY TIFFANY & CO., the plain polished band of court-shaped profile, signed, stamped 'PT950', ring size Q. £300–£400



95

A DIAMOND ETERNITY RING, the bicoloured band inlaid with brilliant-cut diamonds, mounted in 18ct gold, partial UK hallmark for 1998, total diamond weight approximately 0.50 carat, ring size W–X. £800–£1,200



96

A BAND RING BY TIFFANY & CO., the plain polished band of court-shaped profile, signed, stamped 'PT950', ring size J½–K. £200–£300

97

AN 'INFINITY' NECKLACE BY TIFFANY & CO., the cable-link chain interspersed with infinity motifs, signed, stamped 'AU750', maker's box, length 47.5cm. £600–£800





98

AN INDIAN MANGALASUTRA NECKLACE, the double-row bead necklace leading to a trefoil-shaped frontispiece with faceted decoration and enamel highlights, stamped '22CT', length 53.5cm. £500–£700

A Mangalsutra is a necklace worn by married Hindu women; initially placed around the bride's neck by the groom during a Hindu wedding ceremony.

99

AN EMERALD AND DIAMOND RING, the tapered band set with three step-cut emeralds, within a surround pavé-set with brilliant-cut diamonds and similarly-cut diamonds of brown tint, (diamonds untested for natural colour), total diamond weight approximately 0.80 carat, ring size Q. £800–£1,000



100

A GEM-SET DRESS RING, the tapered band set with an oval-cut emerald with a pear-shaped pink sapphire to either side, the surround set with brilliant-cut treated black diamonds, stamped '750', ring size N. £400–£600



101

AN ENAMEL AND GEM-SET BROOCH, the central enamel plaque depicting a floral scene and bordered by circular-cut sapphires, the whole within a textured leaf surround, diameter 40mm. £400–£600

According to a PMI test on the XRF analyzer, the brooch is testing as 13.7ct gold.





102

A DIAMOND PENDANT, the 9ct gold heart set with three brilliant-cut diamonds, to a faceted cable-link chain, UK hallmark, length 46.5cm. £120–£150

103

A PAIR OF RUBY SWIRL EAR PENDANTS BY ZOUGHAIB, the openwork swirl surmounts suspending a chain set with a briolette-cut ruby bead spacer and terminating in a further swirl drop, signed, maker's case, length 6.2cm. £260–£360



104

A PAIR OF AMETHYST EARRINGS, 1996, the circular amethyst cabochons each suspending an openwork drop set with an oval amethyst cabochon, mounted in 9ct gold, maker's mark 'HAJ' probably for Henley Associated Jewellers, Birmingham hallmark, length 23mm. £120–£150



105

A GREEN ENAMEL RING, of continual twist design, Italian assay mark, stamped '750', ring size O. £200–£300



106

A FANCY-LINK GOLD CHAIN, CIRCA 1904, with closed swivel hook and money clip terminals, London import marks, length 48.5cm. £1,800–£2,600

According to a PMI test on an XRF Analyzer the chain and money clip are testing as 20ct.



107

AN 18CT GOLD AND DIAMOND NECKLACE, the graduated *rivière* collet-set throughout with brilliant-cut diamonds, European convention and Sheffield assay marks, total *diamond weight* approximately 4.00 carats, length 45.5cm.

£3,600–£4,000

108

A GEM-SET 'DAY AND NIGHT' RING, centred with a continuous row of *calibré*-cut sapphires and rubies, between swivel hoops of channel set brilliant-cut diamonds, stamped '18k', ring size L.

£300–£500



109

A DIAMOND BRACELET, the openwork hoops with rectangular-shaped links between alternately-set with brilliant-cut diamonds, mounted in 9ct gold, length 21cm.

£1,000–£1,500



EARLY JEWELS



110

A PAIR OF ROMAN GARNET EARRINGS, 1ST–3RD CENTURY AD., each wirework hoop with beaded cluster to the bottom and a cabochon garnet to the front in a beaded collet setting, together with a small garnet ring, earring length 15mm. £150–£200



111

A HARDSTONE INTAGLIO, POSSIBLY ANCIENT ROMAN, the oval carnelian panel carved with two standing figures and capricorn (sea goat) to the foreground, set within a 19th century gold ring mount with pierced reeded shoulders, ring size N–O. £300–£500



112

A COPPER ALLOY ROMAN CHAMPLEVÉ ENAMELLED COCKEREL BROOCH, of Mackreth type 4.b.1, formed in three dimensions with the bird rendered in a brooding position with a raised head and tapering backward looping tail, the wings formed by champlevé cells containing traces of polychrome enamel, including dark blue, with hinged pin and catchplate below, length 42.7mm, weight 10.4gm. £280–£320



113

A MEDIEVAL SAPPHIRE RING, 14TH CENTURY, the trapezoid bezel inset with a similarly shaped cabochon sapphire, to stepped shoulders and narrow band with stamped pellet decoration in lozenge pattern, ring size approximately O, weight 1.5gm. £2,600–£3,000

Provenance: This ring was a detectorist find, discovered near King's Lynn in 2024. It is recorded on the Portable Antiquities Scheme database ref NMS-2084FD, and disclaimed as Treasure, ref: 2024T825.



114

A MEDIEVAL GOLD RING, CIRCA 14TH CENTURY, WITH VACANT SETTING, the vacant oval bezel between small stepped shoulders, to round section band, distorted, weight 3.2gm. £500–£700

Provenance: This ring is a detectorist find, discovered near King's Lynn, Norfolk. It is recorded on the Portable Antiquities Scheme database ref: NMS-B99E01, and has been disclaimed as Treasure, ref: 2024T812.



115

A 15TH CENTURY BRONZE SEAL RING, the octagonal-shaped bezel intaglio carved with a letter P beneath a coronet, to plain angled shoulders and D-section hoop, ring size S. £40–£60



THE BOZON SEAL RING



116

AN EARLY 17TH CENTURY GOLD SEAL RING

bearing arms of Bozon (Bozoun or Bosum) family, the oval bezel bearing a shield-shaped coat of arms blazoned as 'Three birdbolts erect points in base (2,1) with annulet in chief', ring size M–N. £3,000–£4,000

Provenance: This ring was discovered in Thornham, Norfolk, in October 2022. The ring is recorded on the Portable Antiquities Scheme database, ref: NMS-B9CD58, and has been disclaimed as Treasure, ref: 2022 T1061.

A birdbolt was a specific type of arrow with a blunt or broadened head designed for hunting birds without causing excessive damage or piercing to the bird.

These are the arms of the **Bozon** (Bozoun or Bosum) family. The arms may be a pun on the family name - boujons (or besons and bosons) were 'great arrows', meaning arrows with a great or broad head. The arms are recorded in the Parliamentary Roll, circa 1312 and the Surrey Roll of Arms, circa 1395.

There are several branches of the family, but one branch were prominent residents of Whissonsett, Norfolk, about 20 miles from the find site, from the early 14th century. These estates were sold in 1658 and the family then moved to North and South Creake, 10 miles from the find spot.

The annulet on the arms is most probably a cadency mark for a fifth son. According to a pedigree of the family produced by G.A. Carthew (1877), the Whissonsett Bozon's in the 17th century comprised Robert Bozonne and his first wife Elizabeth Kevill, who had four sons; records do not show details of their son's offspring. However Robert also had a second wife, Winefred Knightly, and this union produced another son, John Bozoun, of Horningtoft, Norfolk, and he would have been the fifth son of Robert. Horningtoft lies approximately 4 miles from Whissonsett.

Literature:

Carthew, G.A. *The Hundred of Launditch and Deanery of Brisley: in the County of Norfolk, 1877*, Vol 1. pages 252, 254 and 277.

With thanks to Beacon Genealogical and Heraldic Research for their kind assistance.





ROYALIST JEWELS

After the execution of Charles I, Royalist mourning jewels were produced for his supporters in the form of lockets, rings and pendants, enclosing painted portraits, locks of hair and Royalist symbols, produced in base metals, silver and gold, and worn as a quiet yet powerful sign of allegiance to the cause and resistance to the Commonwealth.

The Civil War was however a dangerous time for Royalist sympathisers, and many of these keepsakes were hidden or worn discretely. After the restoration of the monarchy with the accession of Charles II in 1660, Royalist jewels could be worn publicly as symbols of loyalty to the restored Stuart monarchy.

Whilst history documents Charles I's execution on the day of 30 January 1649, the date 1648 on many pieces, as seen on these two lockets offered here for sale, are based on the Julian calendar, which was used in England until the 18th century. Using the Julian calendar, the year did not commence until March, so many contemporary mourning pieces record the execution as having taken place in 1648.



Actual size

117

A 17TH CENTURY CHARLES I ROYALIST PORTRAIT MINIATURE PENDANT, the painted head and shoulders portrait of Charles I under faceted rock crystal, in gold pie-crust mount, the reverse engraved 'Jan 30th 1648 C R' (the date of King Charles' execution and initials) and centred with a skull, on suspensory loop, and later silver link, total length 22mm. **£3,000–£4,000**





118

A 17TH CENTURY CHARLES I SILVER ROYALIST LOCKET, heart-shaped, the front engraved with a heart pierced by two arrows with a single drop of blood below and the words 'I live and dy in loyaltye', the reverse engraved with the Latin words 'Quis temperit A lacrymis', translating as 'Who can refrain from tears' with the date 'January 30th 1648' below, the day of Charles I's execution, and beneath a crying eye, with three teardrops below, the locket opening to reveal an applied pressed portrait of King Charles, after the medallist Thomas Rawlings, the other side engraved 'Prepared be to follow me C R', the whole with suspensory loop and further silver link, total length 36mm. **£1,500–£1,800**

A similar example is held at the V & A, bearing the same wording to the front and interior. Accession number M.811-1926.

A further comparable example was included in a loan exhibition held at Wartski at their Grafton Street Gallery between 11-21 May 2010: *The King's Blood: Relics of King Charles I*, curated by Sophia Tobin.



Actual size



119

A 17TH CENTURY GOLD POSY RING, engraved to the interior in italic script 'My hart is youers while life endures', with traces of black enamel, and bearing a bird mark, ring size P½, weight 7gm. **£2,000-£3,000**

Provenance: From a private collection.

This posy is not recorded in 'English Posies and Posy Rings', by Joan Evans, 1931 and there are no other examples of this particular posy recorded in any major UK museum collection.



120

A 17TH-18TH CENTURY SILVER GILT POSY RING, the plain band inscribed to the interior 'Ash true to thee as death to me' [sic], with a scrolled H mark following, ring size R. **£100-£150**

This posy is recorded in: 'English Posies and Posy Rings, pub.



121

AN 18TH CENTURY GOLD POSY RING, inscribed in a scrolling cursive script 'Love is the bond of peace', ring size M, weight 5.2gm. £500–£700

This posy is recorded in 'Loves Garland, or Posies for Rings, Hand-Kerchers, and Gloves; and such pretty Tokens that Lovers send their Loves' by N.O. for John Spencer, pub. 1624.

See Evans, J., *English Posies and Posy Rings*, pub. OUP, 1931.



122

A LATE 17TH-EARLY 18TH CENTURY GOLD MOURNING RING, the band decorated with black enamel foliate detail, to a bezel composed of a hexagonal faceted foiled-back rock crystal in a pinched collet setting, bearing maker's mark 'CD', ring size S, weight 5.22gm. £1,000–£1,500

Provenance: This ring was found by a metal detectorist in the early 1990s, in the Cherwell district of Oxfordshire. It has been recorded on the Portable Antiquities Scheme database, ref: BERK-B28F95 and has been disclaimed as Treasure, ref: 2011-T413.



123

A GEORGE III WEDDING BAND, 1796, the slim band of 22ct gold, maker's mark 'I.P.', London hallmark, ring size K. £200–£300



124

A 19TH CENTURY 'JEWEL BEETLE' BROOCH, the iridescent beetle shell to a realistically modelled gold mount, with circular-cut ruby accents, stamped '9C', later adapted, length 5cm. £600–£800

The species of 'Sternocera aequisignata' beetles were a species of jewel beetles belonging to the subfamily 'Julodinae'. Their bright metallic green elytra made them popular for use in jewellery, particularly fashionable in the late 19th century which saw the Victorian trend for insect jewellery, including the use of hummingbird heads, butterfly wings, beetle carapaces, etc.



125

THREE ANTIQUE JEWELS, comprising an early 19th century topaz and seed pearl brooch, an enamel and diamond memorial jewel and an enamel and gem-set pendant, of foliate design, all mounted in gold, various sizes. £150–£200



126

A SMALL COLLECTION OF JEWELLERY, including an opal ring, a marquise-shaped opal cluster pendant, a diamond set initial 'K' pin badge, and an early 20th century peridot and seed pearl pendant, various stamps and dimensions. (4) £300–£400



127

AN AQUAMARINE BROOCH, CIRCA 1820, the cushion-shaped aquamarine set within a chased foliate surround, mounted in gold, later adapted, length 30mm. £400–£600

128

A PAIR OF EARLY 19TH CENTURY GOLD BRACELETS, the woven mesh-link straps leading to barrel-shaped cannetille clasps set with circular turquoise cabochons, lengths approximately 17cm. £1,500–£2,000



129

A MID 19TH CENTURY GEM-SET PENDANT, the pierced lozenge-shaped surmount set with garnet cabochons and vari-cut emeralds in closed back settings, suspending conforming drop below, engraved foliate and filigree decoration throughout, mounted in gold, cased, length 11cm. £1,200–£1,500

According to a PMI test on the XRF analyzer, the brooch is testing between 19ct and 21ct gold.



130

AN EARLY 20TH CENTURY DIAMOND CLUSTER RING, of openwork target design, set with old brilliant-cut diamonds, mounted in platinum and gold, stamped '18CT' and 'FINE PLAT', numbered, total diamond weight approximately 0.60 carat, ring size M. £200–£300

131

A SAPPHIRE AND DIAMOND CLUSTER RING, the cushion-shaped sapphire within an old-cut diamond surround, stamped '18CT', total diamond weight approximately 0.90 carat, ring size Q–R. £600–£800



132

AN ANTIQUE DIAMOND RING, set with a series of graduated rose-cut diamonds in closed back settings, mounted in silver and gold, ring size O. £200–£300



133

AN ANTIQUE HARDSTONE CAMEO, relief carved with a classical mask, possibly Medusa the Gorgon, in oval reeded setting, later mounted as a stick pin, width 16.5mm. £100–£200



134

A CULTURED PEARL AND GEM-SET NECKLACE AND EARRING SUITE, 1984, the uniform row of cultured pearls suspending a fringe of vari-colour gemstones including rhodolite garnet, pink tourmaline and amethyst, together with a pair of ear pendants en suite, mounted in 18ct gold, London hallmark, necklace length 40cm. £300–£500

135 ††

AN UNMOUNTED FANCY GREENISH YELLOW DIAMOND, brilliant-cut, weighing 0.21 carat. £100–£150

Accompanied by a report from IGI stating that the diamond is natural Fancy Greenish Yellow colour, VS1 clarity. Report number F4H88562, dated 28 November 2007.



136

AN EMERALD RING AND PAIR OF EARRINGS, set with an oval-cut and circular-cut emeralds respectively, stamped '14K' and '585', ring size O. £200–£300

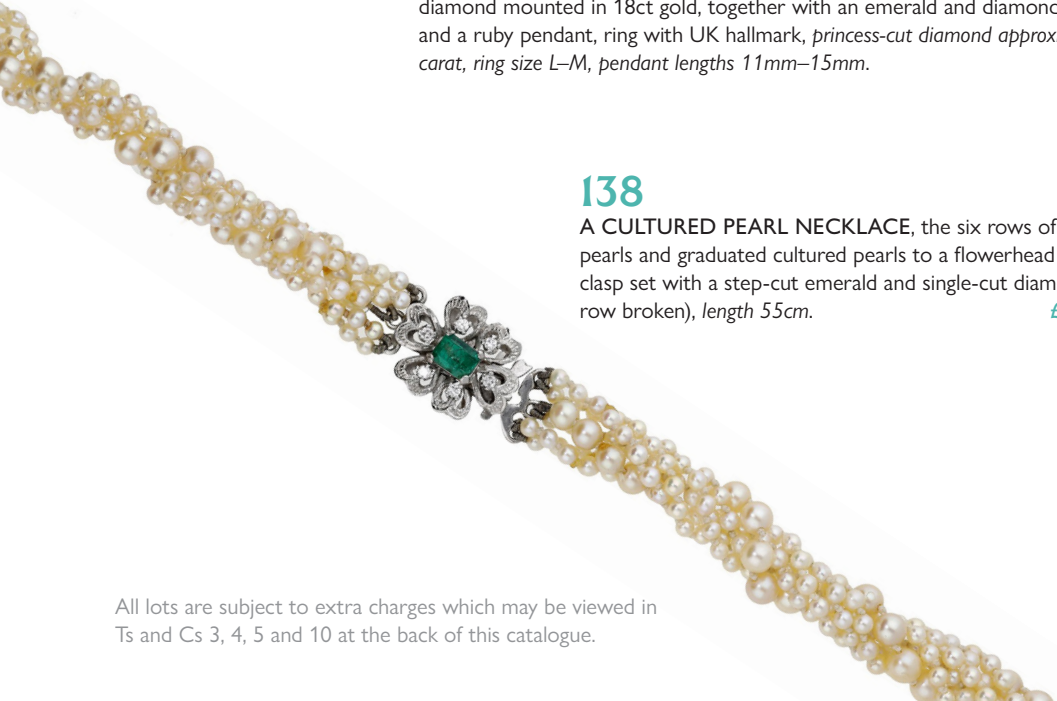


137

A DIAMOND RING AND TWO PENDANTS, the ring set with a princess-cut diamond mounted in 18ct gold, together with an emerald and diamond pendant and a ruby pendant, ring with UK hallmark, princess-cut diamond approximately 0.30 carat, ring size L–M, pendant lengths 11mm–15mm. £200–£300

138

A CULTURED PEARL NECKLACE, the six rows of seed pearls and graduated cultured pearls to a flowerhead cluster clasp set with a step-cut emerald and single-cut diamonds, (one row broken), length 55cm. £150–£200



139

AN OPAL AND DIAMOND PENDANT NECKLACE, the opal cabochon below a tapered diamond surmount with millegrain detailing, the whole suspended by a trace-link chain, length 41cm. £200–£300



140

AN EMERALD AND DIAMOND RING, the step-cut emerald between brilliant-cut diamond shoulders, stamped '750' and '18K', total diamond weight approximately 0.30 carat, ring size N½–O. £200–£300

141

A DIAMOND ETERNITY RING, the bicoloured band set throughout with single-cut diamonds, total diamond weight approximately 0.40 carat, ring size J–K. £200–£300



142

AN EMERALD BEAD BRACELET, the four rows of graduated emerald beads leading to a pierced vari gem-set clasp, length 19cm. £200–£300





143

A 9CT GOLD, CITRINE AND HEMATITE NECKLACE BY DEAKIN & FRANCIS, 1985, centred with an oval hematite cabochon between circular-cut citrines and alternating polished hematite, faceted citrine beads and gilt roundels, maker's mark, Birmingham hallmark, *length 43cm.*

£300–£500



144

AN OPAL AND DIAMOND CLUSTER RING, the opal cabochon set within a single-cut diamond surround, mounted in 18ct gold, London hallmark, *total diamond weight approximately 0.45 carat, ring size P½.*

£300–£500



145

A GARNET AND DIAMOND CLUSTER RING, the oval-cut garnet set within a single-cut diamond surround, stamped '18CT', *ring size M½.*

£150–£200



146

A DIAMOND SINGLE STONE RING, claw-set with a brilliant-cut diamond, stamped '18CT', *diamond weight approximately 1.35 carats, ring size O.*

£1,600–£2,000

147

A CARNELIAN NECKLACE, the tumble polished beads to a gilt metal clasp, *length 45cm.*

£100–£200





148

A SILVER GILT 'BOHEMIAN GARNET' NECKLACE AND BRACELET SUITE, of cluster design, with flowerhead or heart-shaped motifs throughout, the bracelet stamped '800', length 44.5cm. £150-£200



149

A RUBY AND DIAMOND BAR BROOCH, the graduated row of circular-cut rubies spaced by pairs of single cut-diamonds, total diamond weight approximately 0.30 carat, length 48mm. £600-£800



150

AN ANTIQUE RUBY AND DIAMOND BROOCH, composed of three knife-edge bars spaced with graduated mixed-cut rubies and old single-cut diamonds, with unassociated early 20th century Cartier brooch case, length 8.8cm. £700-£900



151

A DIAMOND BRACELET, of bicolour design, the tapered links channel-set with brilliant-cut diamonds, with X-shaped links between, mounted in 9ct gold, total diamond weight approximately 0.70 carat, length 18cm. £300-£500





152

A DIAMOND NECKLACE BY BOODLES, the pendant of stylised foliate design, set with pear, marquise and brilliant-cut diamonds, suspended from an integral cable-link chain spectacle-set with brilliant-cut diamonds, mounted in platinum, signed 'BOODLES', UK hallmark, numbered, *principal diamond approximately 1.10 carats*, pendant length 35mm, chain length 40cm. **£1,200–£1,500**



153

AN 18CT WHITE GOLD AND GEM-SET 'COMÈTE' PENDANT BY CHANEL, CIRCA 1998, the polished star bezel-set with vari-cut sapphires and brilliant-cut diamonds, suspended by an 18ct white gold belcher-link chain, signed 'CHANEL', numbered '7F616', London import marks, *pendant length 20mm*. **£1,000–£1,500**



154

TWO DIAMOND RINGS, comprising a diamond cluster ring, the central brilliant-cut diamond within a single-cut surround and between similarly-set shoulders, together with a brilliant-cut diamond half eternity ring, stamped '18ct' and '750', *total diamond weight approximately 0.90 carat*, ring sizes N½–N. **£1,000–£1,200**



155

A SINGLE STONE DIAMOND RING, the brilliant-cut diamond in four claw setting, the shank stamped 'JR1317', together with a platinum wedding band, partial hallmark, *diamond weight approximately 0.5 carat*, rings size M and L respectively. **£200–£300**



156

A DIAMOND RING, the three principal brilliant-cut diamonds between similarly-set crossover shoulders, stamped '585', *total diamond weight approximately 1.00 carat*, ring size R1/2. **£300–£500**



157

A DIAMOND NECKLACE, the stylised zig-zag set with two brilliant-cut diamonds, suspended from an 18ct gold curb-link chain, pendant stamped '750', clasp with UK hallmark, pendant length 29mm, chain length 40.5cm.

£150-£200



158

AN 18CT GOLD DIAMOND PENDANT ON CHAIN, of bicolour design, the entwined marquise-shaped pendant with brilliant-cut diamond highlights and suspended by an 18ct gold fancy-link chain, UK hallmarks, total diamond weight approximately 0.90 carat, pendant length 40mm.

£700-£900



159

A BLUE TOPAZ AND DIAMOND RING, the sugarloaf blue topaz to a shaped hoop with brilliant-cut diamond highlights to either side, stamped '18K', ring size N.

£400-£600

160

AN 18CT GOLD BRACELET BY UNOAERRE, the two rows of circular-shaped links with three square plaques to the front set with brilliant-cut diamonds, signed, Italian assay mark, UK import mark, length 20cm.

£300-£500



VARIOUS PROPERTIES LOTS 161–181

ANDREW GRIMA

Born in Rome of Italian-Maltese parents, **Andrew Grima** was raised in London, and served in Burma with the Royal Engineers during World War II. After the war he worked in his father-in-law's London jewellery firm. In 1951 following his father-in-law's death, Grima took over the business.

In 1960 his talent was spotted by Graham Hughes, Art Director at Goldsmiths' Hall, who introduced his protégé to many of the rich and famous of society who were to become his clients. In 1966 his success was sealed when Prince Philip chose one of his pieces, a stunning ruby brooch, as a present for the Queen, 1966 also being the year Grima received his royal warrant. In the late 1960s he opened his gallery in Jermyn Street, Mayfair and his reputation continued to grow, attracting a clientele of royalty and jet-setters of the day.

The winner of numerous awards for his contribution to the jewellery industry, today Grima is recognised as one of the great modernist designers of the 20th century.



161

A PAIR OF AMETHYST AND DIAMOND EARRINGS BY ANDREW GRIMA, the lozenge-shaped plaques formed of staggered and textured rods, with a pear-shaped amethyst to the centre and single-cut diamond highlights, signed 'GRIMA', maker's black leather pouch, length 32mm. **£1,500–£2,000**

162

AN 18CT GOLD WATERMELON TOURMALINE AND DIAMOND RING BY ANDREW GRIMA, 1979, the step-cut tourmaline collet-set between asymmetric baguette-cut diamond shoulders, to angular shank, signed 'GRIMA', maker's mark 'AGLtd', London hallmark, ring size J. £3,000–£4,000



163

AN 18CT WHITE GOLD LODOLITE QUARTZ RING BY ANDREW GRIMA, 1973, the large pear-shaped cabochon collet set to tapered band, signed 'GRIMA', London hallmark, ring size O–P. £2,000–£2,400

Also referred to as 'Garden quartz', lodolite contains numerous mineral inclusions giving the appearance of a garden, or landscape within the stone.

164

A LEATHER CASE AND JEWELLERY POUCH BY ANDREW GRIMA, the case with light blue insert and silk lining, the leather pouch with signed silver gilt tag, London hallmark for 1967, maker's mark 'HJCo', case length 10.5cm. (2) £50–£70

MICHAEL GOSSCHALK

After originally trading as a stone merchant, **Michael Gosschalk** opened his first retail premises in 1957 at 20 Motcomb Street in Belgravia, London. Between 1957 and 1965 he was a hugely influential figure in the London jewellery world, his bold designs bringing fun and glamour back into London life, the city still suffering from post-war austerity.

As well as Gosschalk's own impressive list of private clientele, Andrew Grima sold his jewels exclusively through Gosschalk's retail outlet before opening his own shop in 1962. After an armed robbery in 1965, Michael Gosschalk closed his London store and relocated to Monaco.

165

AN 18CT GOLD AND DIAMOND BROOCH RETAILED BY MICHAEL GOSSCHALK, CIRCA 1957, of stylised knot design, the ribbons with reeded texture and accented with brilliant-cut diamonds, French export mark, UK import mark, sponsor's mark 'MG', brooch length 54mm. £600–£800

Provenance: Exhibited at Noonans Mayfair: A Loan Exhibition of an Important Private Collection of British Designer Jewellery, 7–12 October 2024.



166

A PAIR OF 18CT GOLD EAR CLIPS RETAILED BY MICHAEL GOSSCHALK, CIRCA 1960, of wirework knot design, indistinct assay mark, UK import mark, indistinct date letter, sponsor's mark 'MG', length 26mm. £800–£1,200

Provenance: Exhibited at Noonans Mayfair: A Loan Exhibition of an Important Private Collection of British Designer Jewellery, 7–12 October 2024.



JOHN DONALD

John Donald studied metalwork at the Royal College of Art in London, where he became firm friends with fellow students Robert Welch and Gerald Benney. He set up as a jeweller, becoming part of a select group of British London-based designers and jewellers who revolutionised jewellery in the swinging 1960s and 70s. He went on to establish a highly successful business in London and Geneva, gaining an international reputation, his patrons including H.R.H. Princess Margaret.

Donald's 'crown' rings from the 1970s were the results of his experimentation with molten gold in water, which imitated the striations formed in natural minerals. He then mounted precious stones or crystals on wires at different levels within the crown.



167

AN 18CT GOLD AND GEM-SET 'CROWN' RING BY JOHN DONALD, 1974, of textured abstract design, the pierced mount with open circular bezel issuing triangular-cut citrines and diamonds, maker's mark 'JAD', London hallmark, *ring size 1½*. £3,000–£4,000

BEN ROSENFELD

Ben Rosenfeld was a jewellery designer, based in Hatton Garden, and active between 1950–1977. In the immediate years after the Second World War, with precious stones being scarce and therefore prohibitively expensive, gold became highly fashionable, often with the use of just small gemstones as highlights. Rosenfeld was unusual for his liberal use of precious stones in his jewellery.

168

AN 18CT GOLD RUBY AND DIAMOND BRACELET BY BEN ROSENFELD, 1963, formed of overlapping textured leaves, highlighted by circular-cut rubies and brilliant-cut diamonds, maker's mark, London hallmark, *total diamond weight approximately 1.35 carats*, length 19cm. £4,000–£6,000





169

AN 18CT GOLD RUBY AND DIAMOND BRACELET BY BEN ROSENFELD, 1962, formed of textured chevron-shaped leaves, with circular-cut ruby and brilliant-cut diamond highlights, maker's mark 'BRLd', London hallmark, length 22cm. £6,000–£8,000

GILIAN PACKARD

Gilian Packard studied at the Kingston School of Art, the Central School and the Royal College of Art. After her third year at the RCA, her Diploma exhibition coincided with the public opening of their new building in June 1962. With prize money from the exhibition, Gilian went on to hire a workshop in Soho and set to work. From these gentle beginnings work began to snowball.

Most of her commissions were for private customers. Further examples went to retail outlets such as Richard Ogden in Burlington Arcade or Cameo Corner. Progressive provincial jewellers including Michael Jones in Northampton also retailed selected pieces. Gilian won many important jewellery awards, and became the first female Freeman of the Goldsmiths' Company.

Through teaching, she promoted modern jewellery design, becoming Professor of Jewellery and Silversmithing at Glasgow School of Art and at the Sir John Cass Department of Silversmithing, Jewellery and Allied Arts at London's Guildhall University.



170

A PAIR OF INTERLOCKING 18CT GOLD RINGS BY GILIAN PACKARD, 1971, each band of whiplash design, one set with a brilliant-cut diamond highlight, maker's mark 'GEP', London hallmark, *ring size L*.

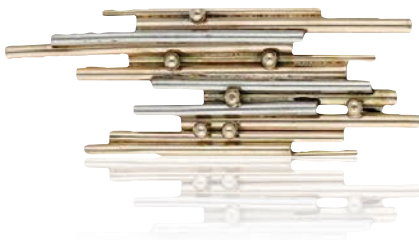
£1,200–£1,500



171

AN 18CT GOLD CITRINE RING BY GILIAN PACKARD, 1967, the lozenge-shaped fancy-cut citrine in raised claw setting above angular shank, maker's mark 'GEP', London hallmark, *ring size approximately J–K*.

£1,200–£1,500



172

A 9CT GOLD BROOCH BY GILIAN PACKARD, 1961, of bicolour design, the staggered tubular rods with beaded highlights, maker's mark 'GEP', London hallmark, *length 5cm*. £300–£400



173

An 18ct gold and diamond brooch by Gilian Packard, 1972, formed of overlapping polished and textured squares of vari-coloured gold, with a square-shaped diamond highlight, maker's mark 'GEP', London hallmark, width 37mm.

£800–£1,200

Provenance: Exhibited at Noonans Mayfair: A Loan Exhibition of an Important Private Collection of British Designer Jewellery, 7 - 12 October 2024.



ALAN MARTIN GARD

Alan Martin Gard was a London-based jeweller who formed part of the renaissance of modern British jewellery design in the second half of the 20th century.

After long apprenticeships at both Combies of Bond Street, and under Andrew Grima, Gard set out on his own in 1966. He exhibited both at Goldsmiths' Hall and the London Design Centre and won numerous prizes including the De Beers engagement ring design contest.

174

A 9CT GOLD AGATE PENDANT NECKLACE BY ALAN MARTIN GARD, 1972, the chain of twisted wirework batons spaced by agate beads, suspending a large disc-shaped agate pendant within conforming wirework mount, maker's mark 'AMG', UK hallmark, *pendant diameter 51.5mm, chain length 80cm.*

£1,200–£1,500

175

AN 18CT GOLD NECKLACE BY ALAN MARTIN GARD, 1969, the rectangular-shaped links with textured bark finish throughout, maker's mark 'AMG', London hallmark, length 77cm.

£8,000–£12,000





DAVID THOMAS

David Thomas attended Twickenham School of Art in 1953 and made his first piece of jewellery in the same year at the age of 15, later winning a Royal Society of Arts bursary which enabled him to travel in Italy and France. David moved to Stockholm and worked with W. A. Bolin, the Swedish Crown jewellers.

Thomas began to move away from working in silver, by this time becoming fascinated by gold. Interest in his work was becoming international, with exhibitions worldwide. Most of his jewellery is made on private commission although in 1972 he produced the Atlantis Collection, in association with Prestige Jewellery in London.

He continues to work in his Pimlico studios alongside his daughter Jessie.

176

A DIAMOND NECKLACE BY DAVID THOMAS, 1979, the rectangular baton-shaped links leading to a looped front set with brilliant-cut diamonds, mounted in 18ct gold, maker's mark 'DAT', UK hallmark, *length 39cm*.

£600–£800

HANS GEORG MAUTNER

Born in Weigelsdorf, Austria, **Hans Georg Mautner** undertook his apprenticeship in Prague. He then worked for the wholesale jeweller Bethhold Muller in Hanau. In 1925 he established his own workshop and retail premises in Vienna, exhibiting regularly at the Künstlerhaus.

Mautner moved to London in 1938, and set up a workshop in Hatton Garden. During the 1950s and 1960s he produced jewellery for S. J. Rood of Burlington Arcade, Boucheron of Old Bond Street and Garrard & Co. Ltd. of Regent Street.



177

AN 18CT GOLD FLOWER BROOCH BY H. G. MAUTNER, 1967, the polished and textured bloom accented with three circular ruby cabochons, maker's mark 'HGM', London hallmark, *length 47mm*.

£600–£800



STUART DEVLIN

Stuart Devlin was an Australian-born artist and metalworker. In 1958 he was awarded a scholarship to study gold and silversmithing at the Royal College of Art in London. Here he received the prestigious two-year Harkness Fellowship from the Commonwealth Fund and spent his fellowship studying at Columbia University in New York. After briefly returning home to Australia to teach, Devlin continued his career in London. His work was widely acclaimed, and he was given the Royal Warrant of Appointment as Goldsmith and Jeweller to Her Majesty the Queen in 1982.

178

AN 18CT GOLD FLORAL BROOCH BY STUART DEVLIN, 1979, the openwork circlet formed of textured flowerheads, maker's mark 'SD', London hallmark, diameter 42mm.

£1,200–£1,500

Provenance: Exhibited at Noonans Mayfair: A Loan Exhibition of an Important Private Collection of British Designer Jewellery, 7–12 October 2024.

BECK AND BLYTH

Beck and Blyth was a small workshop in Shepherds Market, formed by Frances Beck and Ernest Blyth in 1966. The pair met whilst both working in the studio of Andrew Grima. Their bold work favours the use of interesting textures and large semi-precious stones, accented with small diamonds. They won the De Beers Diamond International Award in 1968, 1973 and 1967.



179

AN 18CT GOLD AND AMETHYST PENDANT BY BECK & BLYTH, 1971, the elongated trapezoid of textured abstract design and centred with a rough amethyst crystal, maker's mark 'B&B', London hallmark, length 5cm.

£1,000–£1,500

Provenance: Exhibited at Noonans Mayfair: A Loan Exhibition of an Important Private Collection of British Designer Jewellery, 7–12 October 2024.

LEO DE VROOMEN

Born in Holland during the Second World War, **Leo de Vroomen** was the youngest of eight siblings. His family were tulip farmers but from an early age Leo dreamed of a different life. Following his apprenticeship in The Hague and qualifying as a Master Goldsmith in Switzerland, he came to London in 1965. It was whilst lecturing at the Central School of Art and Design that he met his future wife, the artist and designer Ginnie. Together they founded De Vroomen Design Ltd. De Vroomen went on to win the coveted De Beers Diamonds International Award in 1974, winning again in 1986.



180

A PAIR OF DIAMOND EAR STUDS BY DE VROOMEN, 1978, the textured roundels with polished borders and a brilliant-cut diamond to the centre, mounted in 18ct gold, maker's mark, UK hallmark, length 11mm. £200–£300

DAVID MORRIS

David Morris began his career at the age of 15, starting as an apprentice in the 1950s to a leading Hatton Garden jeweller. By 1962 David opened his first Hatton Garden shop, quickly gaining a global reputation for extraordinary stones and innovative design. By 1969, Morris moved to his first Mayfair location on Conduit Street, and in 1996, the business relocated to its current headquarters to Bond Street, being one of the last remaining jewellers to still have their workshops in Bond Street, above the boutique below. It remains a family-run business, with Jeremy Morris taking over the helm from his father in 2003.



181

A SAPPHIRE AND DIAMOND BROOCH RETAILED BY DAVID MORRIS, the stylised floral bouquet accented with graduated circular-cut sapphires and brilliant-cut diamonds, sponsor's mark 'DM', London import mark for 1989, length 65mm. £2,000–£3,000

182

A TOURMALINE AND DIAMOND DRESS RING, CIRCA 1970, the step-cut tourmaline to an abstract mount with brilliant-cut diamond highlights and reeded band, ring size N-O. £500-£600



According to a PMI test on the XRF analyzer the ring is testing as 18ct gold.



183

AN 18CT GOLD BROOCH, 1970, of spiral form, the gold ribbon with Florentine finish and applied springbok detail, maker's mark 'E&W', numbered '2667', Birmingham hallmark, length 6cm. £500-£700

184

AN EMERALD AND DIAMOND BRACELET BY TABBAH, CIRCA 1970, the bicoloured strap formed of staggered and textured bars, set at intervals throughout with circular-cut emeralds and single-cut diamonds, signed, stamped '750', length 18cm. £3,000-£3,600





185

A FANCY-LINK NECKLACE BY OMEGA, CIRCA 1970, the tapered collar formed of open hoops of irregular outline, each with a textured finish, maker's mark, stamped '750', numbered 'G.706', retailer's case for W. Muntwyler, St. Moritz, length 39cm. £2,000–£3,000

186

AN 18CT GOLD DIAMOND POODLE BANGLE BY GARRARD & CO., 1964, the tapered bangle with engraved textured fur curls and terminating in a realistically modelled poodle's head, with bared teeth, enamel tongue and onyx eyes, with pavé-set brilliant-cut diamond ears and similarly-set collar, maker's mark, London hallmark, *total diamond weight approximately 2.30 carats, inner dimensions 5.5 x 4.7cm.* £4,000–£6,000





187

AN AMETHYST RING AND PENDANT BY ALBION CRAFT COMPANY, 1970 AND 1971, the amethyst rough crystal in an openwork mount formed of textured tendrils, the pear-shaped pendant of similar design, maker's marks 'ACCo', UK hallmarks, *ring size L, pendant length 5.5cm.*

£1,000–£1,500

188

A MULTI-ROW GEM-SET BRACELET, with turquoise cabochons at intervals and polished spacers, *length 18.5cm.*

£300–£500

According to a PMI test on the XRF analyzer, the bracelet chain is testing as 17ct gold.





189

A 9CT GOLD RUBY NECKLACE, 1966, the reeded brick-link chain leading to a crossover front with applied rose, the petals and leaves with textured detailing, the centre and stem set with circular-cut rubies, maker's mark 'EJLd', UK hallmark, length 43.5cm. £1,500–£2,000

190

A DIAMOND THREE STONE RING, the old brilliant and brilliant-cut diamonds in raised claw settings between textured panel shoulders, stamped '18CT', total diamond weight approximately 0.60 carat, ring size N. £400–£600



191

TWO RINGS, the first set to the front with two rows of brilliant-cut diamonds, stamped '18ct', the second, a 9ct gold five stone ruby and diamond ring, total diamond weight approximately 0.50 carat, ring sizes R–R½ and O respectively. (2) £500–£600



192

A SHAPED DIAMOND RING, the broad twin section band of undulating reeded design, the front inset with brilliant-cut diamonds, stamped '750', maker's mark, total diamond weight approximately 0.30 carat, ring size J. £400–£600





193

A SAPPHIRE AND DIAMOND PENDANT, CIRCA 1890, the openwork cartouche of scroll design and set with vari-cut sapphires and old brilliant and rose-cut diamonds, mounted in silver and gold, *total diamond weight approximately 0.35 carat, length 5.3cm.* £300–£500



194

A GEM CLUSTER RING, the circular-cut blue doublet within an old brilliant-cut diamond surround between similarly-set shoulders, *total diamond weight approximately 1.20 carats, ring size P.* £600–£800



195

A SAPPHIRE AND DIAMOND DOUBLE CLUSTER RING, comprising two old brilliant-cut diamond clusters, one centred with a circular-cut sapphire, to rose-cut diamond crossover shoulders, *total diamond weight approximately 0.90 carat, ring size Q½–R.* £300–£500



196

A SAPPHIRE AND DIAMOND CLUSTER RING, the cushion-shaped sapphire set within a brilliant-cut diamond surround, millegrain edged, stamped 'PLAT', *total diamond weight approximately 0.60 carat, ring size N.* £400–£600



197

TWO GEM-SET BAR BROOCHES, the first designed as a circular-cut sapphire within an openwork surround, set throughout with single-cut diamonds, together with an early 20th century rose-cut diamond, onyx and cultured pearl bar brooch, of propeller design, mounted in gold, *first length 5.2cm.* £200–£300



198

AN ENAMEL AND GEM-SET FRINGE NECKLACE BY UNOAERRE, the textured marquise-shaped links with blue guilloché enamel decoration, scroll detailing and circular-cut ruby accents, to a polished baton-link chain, signed, Italian assay mark, length 43cm. £600–£700



199

A PAIR OF SAPPHIRE AND DIAMOND CLUSTER EAR STUDS, the cushion-shaped sapphires within single-cut diamond surrounds, total diamond weight approximately 0.35 carat, length 8.5mm. £800–£1,200

200

A SAPPHIRE AND DIAMOND BRACELET, CIRCA 1960, set throughout with circular-cut sapphires and brilliant-cut diamonds, each in a ropetwist surround with polished X-shaped links between, stamped '14K', total diamond weight approximately 0.75 carat, length 18cm. £1,800–£2,200





201

A DIAMOND SINGLE-STONE PENDANT, the brilliant-cut diamond suspended from an 18ct gold curb-link chain, pendant and chain with UK hallmark, *diamond weight approximately 0.40 carat, pendant length 12mm, chain length 41cm.* £200–£300



202

A DIAMOND CLUSTER RING, set throughout with old brilliant-cut diamonds, stamped '18CT & PT', *total diamond weight approximately 1.00 carat, ring size K.* £300–£500



203

A TANZANITE AND DIAMOND RING, the cushion-shaped tanzanite with a fancy-cut diamond to either side, signed 'Dyach', stamped '18K', *ring size N.* £600–£800



204

A SAPPHIRE AND DIAMOND HALF ETERNITY RING, channel-set to the front with circular-cut sapphires and brilliant-cut diamonds, *total diamond weight approximately 0.25 carat, ring size J.* £200–£300

205

A CULTURED PEARL AND GEM-SET NECKLACE, the double row of cultured pearls leading to a sapphire and diamond-set clasp with pierced decoration, mounted in 18ct gold, London import mark, *total diamond weight approximately 0.40 carat, length 45.5cm.* £400–£600





206

A PAIR OF CULTURED PEARL AND DIAMOND EAR PENDANTS, the cluster surmounts set with pear, marquise and baguette-cut diamonds, suspending an articulated row of baguette and brilliant-cut diamonds, each terminating in a cultured pearl drop, *total diamond weight approximately 3.00 carats, length 45mm.* **£800–£1,000**

207

A LATE 19TH CENTURY SAPPHIRE RING, set with circular and cushion-shaped sapphires above a carved scroll gallery, mounted in gold, stamped '*8CT' (rubbed), ring size approximately S. **£500–£700**

According to a verbal report from GCS the sapphires are of Basaltic origin with no indications of heating. Verbal report number 5785-2208.



208

A STAR SAPPHIRE RING, claw-set with a star sapphire cabochon, ring size G. **£200–£300**



209

A DIAMOND LINE BRACELET, channel-set throughout with princess-cut diamonds, signed 'Damas', stamped '750', *total diamond weight approximately 4.50 carats, length 17.5cm.* **£2,000–£3,000**





210

A PAIR OF CULTURED PEARL EARRINGS, each circular plaque with a cultured pearl to the centre and fleur-de-lys motifs to the cardinal points, on a textured ground, mounted in 9ct gold, maker's mark 'CPJ', UK hallmark, length 19mm. **£200–£300**



211

A CULTURED PEARL AND DIAMOND RING BY WEMPE, of crossover design, the cultured pearl, measuring approximately 11.5mm, between shoulders pavé-set with brilliant-cut diamonds, to a flared polished shank, signed, numbered '1358', stamped '750', ring size P. **£1,200–£1,500**

212

A FANCY-LINK NECKLACE BY NICOLIS COLA, of woven design, signed, Italian assay mark, stamped '750', length 45cm. **£3,000–£5,000**





213

A PAIR OF CULTURED PEARL AND LAPIS LAZULI NECKLACES BY BUCHERER, the cultured pearls and lapis lazuli beads, *measuring approximately 7.2mm*, alternating with openwork spacers formed of beaded clusters, the two joining to form a single necklace, maker's mark 'CB', stamped '750', retailer's pouch, *total length 86cm.*

£5,000–£7,000



214 Y

A NOVELTY CHARM BRACELET, the fetter-link chain suspending 10 enamelled and gem-set charms modelled as assorted shoes, one modelled as a handbag, stamped '750', length 20.5cm. £3,400–£4,000



215

A GEM-SET HEART PENDANT, the heart-shaped amethyst in a reeded surround with old brilliant-cut diamond surmount and similarly-cut diamond and cultured pearl drop below, total diamond weight approximately 0.65 carat, length 5cm. £500–£700

According to a PMI test on an XRF Analyzer the pendant is testing as 18ct gold.



216

AN AMETHYST AND DIAMOND PENDANT, the cushion-shaped amethyst to a pierced mount with baguette-cut diamond highlights, stamped '18K', total diamond weight approximately 0.40 carat, length 30mm. £300–£500



217

A DIAMOND AND GEM-SET RING, comprising a palmette motif surmount set with old-cut and transitional-cut diamonds above a pear-shaped aquamarine drop, the band stamped '585', total diamond weight approximately 0.70 carat, ring size S½–T. £200–£300

218

A RUBY AND DIAMOND HEART PENDANT BY WEMPE, the heart pavé-set with circular-cut rubies, the bale with brilliant-cut diamonds, suspended from a five-row cable-link chain, signed, numbered, stamped '750', total diamond weight approximately 0.70 carat, pendant length 37mm, chain length 40cm. **£1,200–£1,500**



219

A RUBY AND DIAMOND PENDANT, set with a cluster of brilliant-cut diamonds suspending an articulated row of similarly-cut diamonds and a further cluster, terminating in three heart-shaped rubies each within a surround of brilliant-cut diamonds, total diamond weight approximately 3.90 carats, length 6cm. **£1,500–£2,000**

220

A PAIR OF GEM-SET EAR CLIPS BY RODNEY RAYNER, of circular domed form, set with amethyst cabochons, brilliant-cut diamonds and circular-cut pink gemstones, mounted in 18ct gold, signed, London hallmark, maker's mark, length 21mm. **£800–£1,200**



221

AN AMETHYST LINE BRACELET, set throughout with oval-cut amethysts, stamped '14K' and '585', length 18cm. **£150–£200**





222

A 9CT GOLD NECKLACE, the textured curb-link chain leading to a frontispiece of graduated boules, with brilliant-cut diamond highlights, UK import mark, *total diamond weight approximately 0.45 carat, length 45.5cm.* **£800–£1,200**



223

A DIAMOND SEVEN STONE RING, claw-set to the front with brilliant-cut diamonds, mounted in 18ct gold, London hallmark, *total diamond weight approximately 0.90 carat, ring size R.* **£300–£500**



224

A DIAMOND DRESS RING, of crossover design, the principal brilliant-cut diamond enclosed within a partial surround of similarly-cut diamonds, stamped '14KP', *total diamond weight approximately 0.90 carat, ring size N½.* **£400–£500**

225

A CURB-LINK BRACELET BY BUCHERER, of textured bicolour design, maker's mark 'CB', stamped '750', maker's pouch, *length 18.5cm.* **£2,000–£3,000**





226

A PAIR OF DIAMOND EAR CLIPS, the stylised ribbons pavé-set with brilliant-cut diamonds and with reeded ties, total diamond weight approximately 1.40 carats, length 3cm.
£800–£1,200

According to a PMI test on the XRF Analyzer, the earrings are testing between 17ct and 18ct gold.

227

A DIAMOND 'CATENE' RING BY POMELLATO, the tapered and articulated curb-link chain set to the front with brilliant-cut diamonds, signed, Italian assay mark, stamped '750', total diamond weight approximately 2.20 carats, ring size L.
£1,500–£2,000



228

A DIAMOND BANGLE, of bicoloured twist design, set to the front with brilliant-cut diamond highlights, inner diameter 6cm.
£1,500–£2,000

According to a PMI test on an XRF Analyzer the bangle is testing as 18ct gold.





229

A SEED PEARL COLLAR NECKLACE, the multi-row torsade to a barrel-shaped clasp with circular-cut sapphire highlights, stamped '375', length 39cm.
£150-£200



230

A SHELL CAMEO BROOCH, carved to depict a classical female profile within a volute and beaded surround, mounted in gold, length 6cm.
£180-£220



231

A **SAPPHIRE AND DIAMOND PENDANT ON CHAIN**, the cushion-shaped sapphire within a pieced surround of brilliant-cut diamonds, with ruby highlight and festoon drops below, the whole suspended by a fancy-link chain, pendant stamped 'Au750', *total diamond weight approximately 0.30 carat, pendant length 32mm.* **£800–£1,000**

232

A **DIAMOND SINGLE STONE RING**, set with a transitional-cut diamond, *diamond weight approximately 0.45 carat, ring size M–N.* **£300–£400**



233

A **DIAMOND RING**, the princess-cut diamond between two similarly-cut diamonds to a reeded hoop, mounted in platinum, UK hallmark, *total diamond weight approximately 0.75 carat, ring size J–K.* **£400–£600**



234

AN **EARLY 20TH CENTURY DIAMOND BRACELET**, the articulated row of transitional and single-cut diamonds to a later expandable bracelet, *total diamond weight approximately 0.90 carat, length 17.5cm.* **£800–£1,200**



235

A **DIAMOND BRACELET**, the tapered links channel-set with brilliant-cut diamonds, with collet-set similarly-cut diamonds between, mounted in 9ct gold, UK hallmark, *total diamond weight approximately 2.00 carats, length 18cm.* **£600–£800**





236

AN 18CT GOLD 'LOVE' BANGLE BY CARTIER, the polished bangle with screwhead motifs, signed 'Cartier', serial number 'DRB951', size 18, Swiss assay mark, European convention marks, original case with screwdriver, *inner dimensions 5 x 6cm.* £2,000–£3,000

Provenance: Purchased 22 April 2017 from Cartier at Selfridges, London. Accompanied by certificate of authenticity.

237

A DIAMOND CURB-LINK BRACELET, of bicoloured design, partially-set with brilliant-cut diamonds, stamped '750', *total diamond weight approximately 0.75 carat, length 18cm.* £800–£1,200





238

AN 18CT GOLD AND DIAMOND 'ICON' RING BY GUCCI, set with brilliant-cut diamonds alternating with the Gucci GG motif, signed, Italian assay mark, European convention mark, *total diamond weight approximately 0.25 carat, ring size I-J.* **£300-£500**

239

A DIAMOND 'NOUVELLE VAGUE' RING BY CARTIER, of crossover band design, one set with brilliant-cut diamonds to the front, mounted in 18ct gold, signed, serial number 'L33976', European convention mark, *total diamond weight approximately 1.10 carats, ring size J½.* **£1,000-£1,200**

Provenance: Purchased from Cartier at Selfridges, London in 2005. Accompanied by certificate of authentication, numbered '277440'.





240

A LATE 19TH CENTURY SAPPHIRE AND DIAMOND RING, the marquise-shaped panel set throughout with circular-cut sapphires and old brilliant-cut diamonds, between fluted shoulders, mounted in gold, *total diamond weight approximately 1.20 carats, ring size N–O.* £700–£900



241

A LATE 19TH CENTURY DIAMOND FIVE STONE RING, the graduated row of old brilliant-cut diamonds to a pierced scrollwork gallery, mounted in gold, *total diamond weight approximately 1.20 carats, ring size N–O.* £700–£900



242

A SAPPHIRE AND DIAMOND CLUSTER RING, of flowerhead design, set with cushion and oval-shaped sapphires and old brilliant-cut diamonds, *total diamond weight approximately 0.60 carat, ring size L.* £700–£900



243

A LATE 19TH CENTURY SAPPHIRE AND DIAMOND BANGLE, set to the front with oval mixed-cut sapphires and old brilliant-cut diamonds, to an openwork knifewire hoop, mounted in gold, *total diamond weight approximately 1.50 carats, inner dimensions 4.6 x 5.5cm.* £1,500–£2,000



244

A MID 19TH CENTURY ENAMEL SERPENT BRACELET, the graduating and articulated body decorated with blue enamel, the head applied with an opal and rose-cut diamond cluster and with ruby cabochon eyes, mounted in gold, fitted case, the underside bearing a handwritten label reading: *'Belonged to Grandmama Aberdare, given her by Sir Charles Napier, (Norah Creine Napier) given me at my wedding by Aunt Alice Bruce. To go back to England'*, length 21cm. **£3,000–£5,000**

Provenance: According to the note of provenance attached to the case, Sir Charles Napier (1782–1853) had given the bracelet to 'Grandmama Aberdare'. It had then passed down through the family to Alice Bruce, an aunt of the ultimate recipient, who had written the history on this note, as a wedding gift.

'Grandmama Aberdare' was Lady Nora Creina Blanche Bruce (1827–97), second wife of the 1st Baron Aberdare (1815–95), who became Lord President of the Council and Home Secretary under Gladstone, and the daughter of Sir William Napier (1785–1860), the younger brother of Sir Charles. Both brothers fought in the Peninsular War, and both later rose to the rank of General.

While William wrote a definitive history of the Peninsular War, Charles pursued a military career: in 1839 he was given command in Northern England to control the Chartist agitation, and is remembered for his sensitive handling of the unrest due to the hardships experienced by the labouring classes in the aftermath of the Napoleonic Wars, thereby averting conflict. He spent time in India (1841–44) involved in the controversial annexation of the native states of Sind into the British Empire for which he received a Knighthood.

Alice Bruce (1867–1951) was the youngest daughter of the Lord and Lady Aberdare, and granddaughter of Sir William Napier. A celebrated educationalist and administrator, she served as President of Aberdare Hall in Cardiff.

Then by direct family descent to the vendor.



245

AN OPAL AND DIAMOND PENDANT, the opal cabochon beneath a knife-edge surmount collet-set with brilliant-cut diamonds, the whole suspended by a curb-link chain, *total diamond weight approximately 0.40 carat, pendant length 5.5cm.*
£800–£1,200



246

AN UNMOUNTED BLACK OPAL, weighing 6.26 carats. £500–£700



247

AN EARLY 20TH CENTURY DIAMOND BAR BROOCH, centred with a graduated row of old brilliant-cut diamonds, mounted in platinum and gold, *total diamond weight approximately 1.35 carats, length 6.5cm.*
£400–£600

248

A PINK SAPPHIRE AND DIAMOND LINE BRACELET, the articulated bracelet of brilliant-cut diamonds leading to a pink sapphire-set hoop and clasp, mounted in 18ct gold, Birmingham hallmark, *total diamond weight 0.80 carat, length 18cm.*
£800–£1,200



249

AN AMETHYST NECKLACE, spectacle-set throughout with oval-cut amethysts, stamped '750', length 46cm. £300–£500



250

A PINK SAPPHIRE AND DIAMOND PENDANT, the cushion-shaped pink sapphire within a pierced surround of brilliant, single, and step-cut diamonds, with further brilliant-cut diamond drop below, the whole suspended by a brick-link chain, *total diamond weight approximately 2.00 carats, length 38cm.* £800–£1,000



251

A PAIR OF DIAMOND AND NATURAL PEARL EARRINGS, of spray design, set with old brilliant-cut diamonds and natural pearls of various tints, *total diamond weight approximately 1.45 carats, length 20mm.* £1,000–£1,500

According to a verbal test from GCS three pearls are testing as being of natural saltwater origin, and one is testing as natural freshwater. Verbal report number 5785-3126.



252

AN EARLY 20TH CENTURY BAR DIAMOND BROOCH, the gold knife-edge bar claw-set with an old oval-cut diamond, *diamond weight approximately 1.10 carats, length 6.5cm.* £800–£1,200

253

A CONVERTIBLE CULTURED PEARL NECKLACE, fashioned as either a single strand or two separate rows of cultured pearls, with fluted boule clasps, stamped '14K', *individual lengths 64 and 77cm.* £150–£200





254

A PAIR OF CULTURED PEARL AND DIAMOND EARRINGS BY WEMPE, the flame-shaped surmounts pavé-set throughout with brilliant-cut diamonds, suspending a cultured pearl drop below, *measuring approximately 11mm*, mounted in 18ct gold, signed, numbered '1463', UK hallmark, *length 33mm*. **£1,200–£1,500**

255

A CULTURED PEARL AND DIAMOND NECKLACE, the graduated strand of cultured pearls, *measuring approximately 10.3–13.3mm*, to boule clasp pavé-set with brilliant-cut diamonds, stamped '750', *total diamond weight approximately 1.00 carat*, *necklace length 47cm*. **£800–£1,200**





256

A CULTURED PEARL NECKLACE, the uniform cultured pearls, *measuring approximately 12.5–13.0mm*, to a spherical pavé-set brilliant-cut diamond clasp, stamped '750', *length 84cm*.

£1,800–£2,600



257

AN 18CT GOLD POODLE BROOCH, CIRCA 1959, the realistically modelled poodle with textured fur and circular-cut ruby eyes, London import marks, length 36mm.

£500–£700



258

A RUBY AND DIAMOND RING, set to the front with three square-shaped scissor-cut rubies, with baguette-cut diamonds between, mounted in 18ct gold, UK hallmark, total diamond weight approximately 0.60 carat, ring size L–M.

£500–£700



259

A DIAMOND RING, set to the front with three baguette-cut diamonds, mounted in 18ct gold, UK hallmark, total diamond weight approximately 0.45 carat, ring size N.

£300–£500



260

A RUBY AND DIAMOND RING, the front of scroll design and set with a circular-cut ruby between two brilliant-cut diamonds, mounted in 9ct gold, UK hallmark, ring size P–Q.

£200–£300



261

A DIAMOND NECKLACE, the stylised bow set throughout with single-cut diamonds and suspended by a 9ct white gold box-link chain, London import marks, total diamond weight approximately 0.70 carat, length 43.5cm.

£200–£300

262

A DIAMOND POODLE BROOCH, the stylised poodle pavé-set with single-cut diamonds, stamped 'K18', total diamond weight very approximately 2.00 carats, length 35mm.

£600–£800



263

A RUBY AND DIAMOND GREYHOUND BROOCH BY ALABASTER AND WILSON, realistically modelled as a running greyhound with 'Trap 1' racing colours, pavé-set with a combination of single-cut diamonds and circular-cut rubies, with onyx eye, maker's mark, total diamond weight approximately 0.50 carat, length 45mm.

£500–£700

According to a PMI test on the XRF analyser the brooch is testing as 17ct gold.

E.S. CAMPBELL LTD
130, SLOANE STREET,
LONDON, S.W.1.



264

A DIAMOND BRACELET, the articulated panels set with single-cuts diamonds and spaced by similarly-set connectors, with millegrain detailing throughout, cased, total diamond weight approximately 3.50 carats, length 17cm. £1,400–£1,800



265

A PAIR OF MID 20TH CENTURY DIAMOND EAR CLIPS, the scroll surmounts set with brilliant and calibré-cut diamonds, suspending detachable tassel drops set with baguette, brilliant and trilliant-cut diamonds, total diamond weight approximately 5.00 carats, length 5.5cm. £1,800–£2,200

266

A CULTURED PEARL NECKLACE AND EAR STUDS, the uniform strand to a reeded barrel-shaped clasp, the ear studs with ropetwist borders, necklace with French assay mark, indistinct maker's mark, ear studs with maker's mark 'CPJ', UK hallmark, case by Boucheron, necklace length 48cm, ear stud length 11mm. £300–£500





267

A 19TH CENTURY AMETHYST RIVIÈRE NECKLACE, the graduated oval-cut amethysts in pinched collet settings, mounted in gold, (replacement clasp), length 39cm. **£300–£500**

268

A DIAMOND SINGLE STONE RING, the step-cut diamond, weighing 0.50 carat, mounted in platinum, UK hallmark, ring size K. **£500–£700**

Accompanied by a copy of a certificate from the European Gemological Laboratory stating that the diamond is D colour, IF clarity. Report number AU1200311, dated 3 December 2003.



269

A DIAMOND SINGLE STONE RING BY BOODLES, 2008, the brilliant-cut diamond, weighing 1.25 carats, in a four claw setting, mounted in platinum, signed 'BOODLES', maker's mark, London hallmark, numbered '0101K0292L', ring size O. **£2,200–£2,800**

According to GIA Report Checker, the diamond with laser inscription 1116747760, is confirmed as G colour and VS1 clarity. Report dated 5 March 2010.





270

A PAIR OF 18CT GOLD EAR CLIPS RETAILED BY DAVID MORRIS, the stylised brick links of polished bombé form, Italian assay and UK import marks, sponsor's mark 'DM', maker's case, length 40mm.

£600–£800



271

A MID 20TH CENTURY GOLD TANK BRACELET, CIRCA 1940, the articulated bracelet composed of polished triangular links, length 19.5cm.

£2,000–£2,400

According to a PMI test on the XRF analyzer bracelet is testing as 19ct gold.



272

A DIAMOND BROOCH, CIRCA 1950, composed of three pierced work ribbon scrolls, supporting a series of flowerheads each centred with a single-cut diamond, with a further radiating spray of brilliant-cut diamonds, total diamond weight approximately 1 carat, length 6cm.

£400–£600

273

A SAPPHIRE AND DIAMOND PENDANT ON CHAIN, the pear-cut sapphire within a brilliant-cut diamond surround, with similarly-cut diamonds above and below, suspended from a flattened curb-link chain, stamped '14k', total diamond weight approximately 1.04 carats, pendant length 25mm, chain length 37cm. **£900–£1,200**

According to a verbal report from GCS, the sapphire is testing as Madagascar origin, with no indications of heating. Verbal report number 5785-3257.



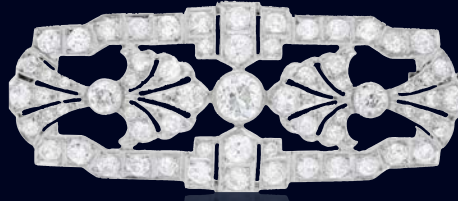
274

A PAIR OF SAPPHIRE AND DIAMOND CUFFLINKS, geometrically set with a series of calibre-cut sapphires within a single-cut diamond border, to T-bar terminals, gem-set panels length 17mm. **£200–£300**

275

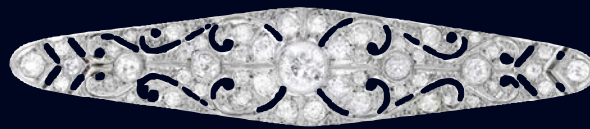
A SAPPHIRE AND DIAMOND FLOWER BROOCH, the flowerhead centred with a sapphire and diamond cluster within wirework furled petals with diamond highlights, the stem channel-set with calibr -cut sapphires and tied with a diamond-set bow, (one sapphire deficient), total diamond weight approximately 1.00 carat, length 5.3cm. **£400–£600**





276

AN ART DECO DIAMOND BROOCH, the openwork plaque with palmette detailing, set throughout with old brilliant and single-cut diamonds, mounted in platinum, Austrian assay marks, stamped '950', total diamond weight approximately 6.35 carats, length 5.6cm. £2,000–£3,000



277

AN ART DECO DIAMOND BROOCH, the lozenge shaped plaque with pierced scrollwork detailing, set throughout with old brilliant-cut diamonds, mounted in platinum, total diamond weight approximately 3.60 carats, length 7.8cm. £1,200–£1,500



278

AN ART DECO DIAMOND BROOCH, the openwork plaque with entwined scroll and pierced zig-zag detailing, set throughout with old brilliant and single-cut diamonds, mounted in platinum, principal diamond weight approximately 2.10 carats, remaining total diamond weight approximately 9.00 carats, length 7.5cm. £5,000–£7,000



279

A DIAMOND RING, set with a heart-shaped diamond, weighing 3.01 carats, the gallery and shoulders set with brilliant-cut diamonds, stamped 'pt950', and 'GIA D SI1 301' indicating GIA grades and weight, remaining total diamond weight approximately 1.20 carats, ring size P. £14,000–£16,000

Accompanied by a GIA report stating the heart brilliant weighs 3.01 carats, D colour, SI1 clarity. Report number 17459934, dated 4 August 2008.



280

A DIAMOND FLOWER PENDANT, the flowerhead petals set with rose-cut diamonds and a central mixed-cut diamond, to a cable-link back chain, clasp stamped 'platinum', flowerhead diameter 20mm. £500–£600



281

A GEM-SET BUTTERFLY BROOCH, set with fancy-cut blue and pink tourmalines and with brilliant-cut diamond highlights throughout, Italian assay marks, stamped '750', total diamond weight approximately 0.60 carat, length 35mm. £600–£800



282

A GEM-SET BROOCH, the stylised bouquet set throughout with vari-cut emeralds, sapphires, pink sapphires, yellow sapphires, pearls, etc., (pearls untested), length 5cm. £400–£600

283

A BEE NECKLACE, the hematite and ruby beads spaced by polished roundels and leading to an 18ct gold bee, maker's mark 'PD', Edinburgh hallmark for 1989, length 41cm. £400–£600



284

A BEE PENDANT, realistically modelled with pierced wings, cultured pearl abdomen and sapphire eyes, on a fine trace-link chain, stamped '750', pendant length 24mm, chain length 35cm. £400-£600



285

THREE GOLD INSECT BROOCHES, comprising a 9ct gold bee with bead and ropetwist detailing, a smaller 18ct gold bee, and a 9ct gold dragonfly, UK hallmarks, lengths 18-30mm. £400-£600

286

A GEM-SET BUTTERFLY BANGLE, set with a combination of vari-cut rubies, emeralds and diamonds, inner dimensions 5.2 x 5.8cm. £400-£600

According to a PMI test on the XRF analyzer the bangle is testing as 18ct gold.





287

AN 18CT YELLOW GOLD 'LOVE' BANGLE BY CARTIER, the polished bangle with screwhead motif throughout, signed 'Cartier', serial number 'AH1808', size 17, stamped '750', Italian assay mark, original case with screwdriver, *inner dimensions 5.5 x 4.9cm.* **£3000–£4,000**

Provenance: Purchased from Cartier Rome on 7 June 2002. Accompanied by certificate of authentication numbered '1916713'.

288

AN 18CT WHITE GOLD AND DIAMOND 'JUSTE UN CLOU' RING BY CARTIER, designed as a wraparound nail and set to the front with brilliant-cut diamonds, signed 'Cartier', serial number 'JJF866', European convention mark, *total diamond weight approximately 0.40 carat, ring size M½.* **£1,500–£2,000**



289

A 'TRINITY' NECKLACE BY CARTIER, the tricoloured hoops suspended from a black cord, signed, serial number 'IY9478', stamped '750', diameter 22mm. £1,200–£1,500



290

AN 18CT WHITE GOLD AND DIAMOND 'LOVE' BANGLE BY CARTIER, with screwhead motifs, set with four brilliant-cut diamonds, signed 'Cartier', serial number 'CZC439', size 16, Swiss assay mark, European Convention marks, original case with screwdriver and outer box, total diamond weight approximately 0.35 carat, inner diameter 4.7mm. £5,000–£6,000

Provenance: Purchased from Cartier at Harrods in 2017.





291

AN EMERALD AND DIAMOND PENDANT, the cushion-shaped emerald set within a marquise-shaped surround of old brilliant-cut diamonds, to a similarly-set tapered bale and with further old brilliant-cut diamond drop below, suspended by a curb-link chain, (later adapted), *total diamond weight approximately 1.15 carats, pendant length 45mm. £600–£800*



292

A LATE 19TH CENTURY RUBY FIVE STONE RING, the graduated row of mixed-cut rubies to a pierced scrollwork mount with diamond point highlights, mounted in gold, *ring size U–V.*

£800–£1,200

According to a report from GCS, the rubies are testing as Burma / Mogok origin, with no indications of heating. Report number 5785-3127.



293

A GEM-SET RING, the antique cluster set throughout with vari-cut diamonds and circular-cut red gemstones, (later converted), *ring size J–K.*

£600–£800



294

A LATE 19TH CENTURY EMERALD AND DIAMOND FIVE STONE RING, the graduated row of step-cut emeralds and old brilliant-cut diamonds to a pierced scrollwork gallery, mounted in gold, *total diamond weight 0.60 carat, ring size K½–L.*

£600–£800



295

A GEM-SET BANGLE, CIRCA 1890, of openwork knifewire design, the front set with a cushion-shaped ruby with a step-cut emerald to either side, with foliate details between set with rose-cut diamonds, mounted in silver and gold, *inner diameter 5.6cm.*

£800–£1,000

296

A GARNET AND SEED PEARL PENDANT, 19TH CENTURY AND LATER, the pear-shaped drop set with circular-shaped garnets with a pear-shaped garnet to the centre in a seed pearl surround, to a later cable-link chain, mounted in gold, closed-back settings, (composite), pendant length 45mm, chain length 38.5cm.

£150-£200



297

A RUBY AND DIAMOND LINE BRACELET, collet-set throughout with vari-cut rubies and old brilliant-cut diamonds, total diamond weight approximately 1.65 carats, length 18cm. £2,000-£3,000

298

A SEED PEARL AND DIAMOND BANGLE, CIRCA 1900, the tapered frontispiece of openwork foliate design, set with seed pearls and an old brilliant-cut diamond, to a knifewire hoop, mounted in gold, cased, inner diameter 5.7cm. £600-£800





299

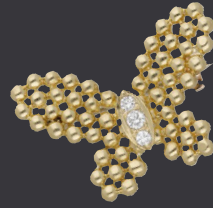
A DIAMOND SINGLE STONE RING, set with a brilliant-cut diamond, stamped '18CT', diamond weight approximately 1.60 carats, size R. £2,000–£3,000



300

A DIAMOND SINGLE STONE PENDANT, the brilliant-cut diamond, weighing 1.04 carats, in a four-claw 18ct white gold setting, UK hallmark, length 15mm. £2,000–£3,000

Accompanied by a report from GIA stating that the diamond is D colour, VS2 clarity. Report number 16188726, dated 27 June 2007.



301

A DIAMOND BUTTERFLY BROOCH BY VAN CLEEF & ARPELS, of beaded design, the thorax set with graduated brilliant-cut diamonds, signed 'VCA', maker's mark, numbered 'B1181A9', stamped '750', length 30mm. £1,500–£2,000

302 Y

A PAIR OF MOTHER-OF-PEARL 'ROSE DE NOËL' EARRINGS BY VAN CLEEF & ARPELS, the shaped mother-of-pearl petals with a cluster of brilliant-cut diamonds to the centre, signed, French assay mark, maker's mark, numbered 'BL155485', total diamond weight approximately 1.20 carats, length 32mm. £4,000–£6,000





303

A 19TH CENTURY BERLIN IRONWORK NECKLACE, the pierced panels of scalloped outline and leading to a similarly styled frontispiece with applied anchor and wreath motif, length approximately 38.5cm. £600–£800



304

A MID 19TH CENTURY DIAMOND FLOWER BROOCH, the sculptural flowerhead set with cushion-shaped diamonds, and with rose-cut diamonds to the pierced petals, mounted in silver and gold, total diamond weight approximately 2.00 carats, diameter 28mm. £500–£700



305

A GOLD CHIMERA BROOCH, FRENCH, CIRCA 1900, of pierced circular form, chased and depicting a chimera and serpent in conflict, with scrolled foliate decoration throughout, French assay mark, diameter 30mm. £600–£800

This brooch is fashioned in the manner of **Maison Plisson & Hartz**, important French jewellers working in Paris in the late 19th century. The firm was known for their novel designs and high quality craftsmanship and were the first French jewellers to create jewellery featuring mythological beasts. The firm was initially run by Bottentuit and Plisson from 1872–1886. Plisson collaborated with Hartz between 1889 and 1904. The first French chased gold chimera jewels originated from this period, initially achieving only a lukewarm response, but later becoming highly fashionable. Hartz died in 1904.

Literature:

Vever H: *French Jewelry of the Nineteenth Century*, pub. 2001, Thames & Hudson, pages 1058–1063.

306

A GEM-SET COMMEMORATIVE PENDANT FOR THE DELHI DURBAR, ATTRIBUTED TO BOUCHERON, 1911,

the pierced spherical pendant with red enamel lettering reading 'Camp Madras' and 'Delhi Durbar', with a central row of rose-cut diamond Roman numerals 'MCMXI', spaced by amethyst cabochons in geometric openwork settings, suspending a similarly-set drop below, to a rose-cut diamond bale, mounted in silver and gold, length 40mm.

£1,600–£2,000



Provenance: This pendant was presented to Lucy Mabel Hammick, a daughter of **Sir Murray Love Hammick**, and thence by descent.

Sir Murray Love Hammick (11 May 1854–4 March 1936), worked in the Indian civil service in Madras. In 1908 he was appointed to the Executive Council of the Governor of Madras and in March 1912 he was chosen to act as the Governor of Madras until the arrival of the governor-designate John Sinclair, 1st Baron Pentland in October of that year. Hammick was knighted in 1911, becoming a Knight Commander of the Order of the Star of India (KCSI). He also held the title of Companion of the Order of the Star of India (CSI).

The third Delhi Durbar was held in 1911 to celebrate the Coronation of King George V and Queen Mary and allow their proclamation as Emperor and Empress of India. Every governor and all the rulers of princely states in India attended to pay obeisance. The huge pageant was attended by 10,000 government officials and other dignitaries and a further 50,000 local people. The royal couple arrived in their Coronation robes with the King-Emperor wearing the

Imperial Crown of India. Two days later the King-Emperor presided over a military review of 40,000 troops. A feature film of the event titled *With Our King and Queen Through India* (1912) – also known as *The Durbar in Delhi* – was filmed in the early colour process Kinemacolor and released in February 1912.

It appears that Lord Carmichael (Thomas David Gibson-Carmichael, 1st Baron Carmichael), the Governor of Madras from November 1911 to March 1912, commissioned a series of these bejewelled commemorative pendants to be given as gifts to selected female guests at the Durbar. Three others are recorded - one presented to Frances Campbell, the wife of Archibald Campbell, private secretary to Lord Carmichael (sold at Tennants in November 2020); a second was presented to Mrs Elwes, the wife of Lieutenant-Colonel Frederick Fenn Elwes, principal of the Medical College in Madras (sold at Bonhams in October 2003); the third was presented to Miss Edith Hamilton, Lord Carmichael's wife's cousin, who attended the Durbar (sold at Bonhams in 2009).

The Hamilton and Elwes pendants were both contained in signed fitted cases by Boucheron, and given they are identical, it is probable that all the pendants were commissioned from Boucheron.



Lucy Hammick wearing the Delhi Durbar pendant, Madras, 1911



Madras, 1911, Centre row from left: Lucy Hammick, Sir Murray and Lady Hammick, a gentleman and Dorothy Hammick. The other gentlemen in the photograph are members of the Indian Civil Service

307

A DIAMOND SINGLE STONE RING, claw-set with a brilliant-cut diamond, weighing 5.33 carats, stamped '18CT', ring size O. £5,000–£7,000



308

A 19TH CENTURY COLOMBIAN EMERALD AND DIAMOND PENDANT, the flowerhead centred with a cluster of cushion-shaped and old brilliant-cut diamonds, within a petal surround of pear-shaped emeralds, the scalloped border set with further old brilliant-cut diamonds, mounted in gold, case by Heming & Co., total diamond weight approximately 2.00 carats, length 31mm.

£4,000–£6,000

Accompanied by a Report from the Gem & Pearl Laboratory confirming the ten emeralds are of Colombian origin, with minor or moderate enhancement. Report number 26266, dated 10 August 2025.





309

A DIAMOND HOOP PENDANT BY BOODLES, 2014, the central brilliant-cut diamond suspended within a similarly-set surround, mounted in platinum, on an unassociated fancy-link chain, signed 'BOODLES', maker's mark, London hallmark, total diamond weight approximately 1.60 carats, pendant length 18mm, chain length 40cm. £1,500–£1,800



310

A DIAMOND PENDANT BY BOODLES, 2014, the central brilliant-cut diamond, weighing 1.25 carats, within a similarly-set wraparound surround, mounted in platinum, suspended from an unassociated baton-link chain, signed 'BOODLES', maker's mark, London hallmark, chain stamped '750', remaining total diamond weight approximately 1.10 carats, pendant length 20mm, chain length 19cm. £1,800–£2,400

Accompanied by a copy of a report from GIA, stating that the diamond is G colour and VS2 clarity. Report number 5156536072, dated 24 July 2013.



311

A PAIR OF DIAMOND EAR STUDS, each brilliant-cut diamond mounted in 18ct gold, UK hallmark, total diamond weight approximately 1.70 carats. £800–£1,200



312

AN EARLY 20TH CENTURY SAPPHIRE AND DIAMOND BROOCH, the cirplet set with circular-cut sapphires and old brilliant-cut diamonds, mounted in platinum and gold, total diamond weight approximately 0.80 carat, length 24mm. £400–£600

313

A DIAMOND SINGLE STONE RING BY BOODLES, the brilliant-cut diamond, weighing 2.52 carats, claw-set between bifurcated shoulders, the claws and shoulders set with similarly-cut diamonds, mounted in platinum, signed 'BOODLES, maker's mark, London hallmark, ring size 0. £7,000–£9,000

Accompanied by a report by GCS stating that the diamond is H colour, VSI clarity. Report number 5785-3256, dated 18 July 2025.



314

A SRI LANKAN SAPPHIRE AND DIAMOND NECKLACE BY WEMPE, the mixed-cut sapphire, weighing 21.80 carats, within a pavé-set diamond surround and leading to a curb-link neck chain with graduated brilliant-cut diamond highlights, signed, numbered '197', stamped '750', total diamond weight approximately 9.50 carats, length 40.5cm. **£12,000–£15,000**

Accompanied by a report from GCS stating the sapphire is of Sri Lankan origin with indications of heat treatment. Report number 5785-2515, date June 9 2025.





315

A SRI LANKAN SAPPHIRE AND DIAMOND FRINGE BRACELET BY WEMPE, the eight pendant drops each set with an oval-cut sapphire within a double row diamond surround, suspended from a belcher-link chain, the lobster claw clasp diamond-set to both sides, signed, numbered '1588', stamped '750', length 19.5cm. **£3,000–£4,000**

Accompanied by a report from GCS stating the sapphires are of Sri Lankan origin (random test). Report number 5785-2513, dated 9 June 2025.



316

A PAIR OF SRI LANKAN SAPPHIRE AND DIAMOND EAR CLIPS BY WEMPE, set with four oval-cut sapphires, the surmounts with surrounds of pavé-set brilliant-cut diamonds, the detachable drops below with pavé-set diamond wraparound mounts, maker's marks, numbered, stamped '750', length 37mm. **£2,400–£3,000**

Accompanied by a report from GCS stating the sapphires are of Sri Lankan origin. Report number 5785-2514, dated 9 June 2025.

317

A SRI LANKAN SAPPHIRE AND DIAMOND RING BY WEMPE, the oval-cut sapphire in a wraparound scroll setting pavé-set with brilliant-cut diamonds, signed, numbered, stamped '750', sapphire weighing approximately 9.20 carats, ring size P. **£3,000–£5,000**

Accompanied by a report from GCS stating the sapphire is of Sri Lankan origin with no indications of heating. Report number 5785-2512, dated 9 June 2025.



318

A DIAMOND SINGLE STONE PENDANT, the brilliant-cut diamond, weighing 3.01 carats, in a four-claw setting, length 16mm. £15,000–£20,000

Accompanied by a diamond report from E.G.L International stating that the diamond is H colour, VS2 clarity. Report number AY 300872, dated 31 March 2008.





319

A FANCY COLOURED DIAMOND PENDANT, the cushion-shaped diamond of yellow tint, weighing 2.01 carats, in a four claw 18ct gold setting, UK hallmark, length 15mm. **£8,000–£12,000**

Accompanied by a report from GIA stating that the diamond is a natural Fancy Vivid Yellow colour, S11 clarity. Report number 15810200, dated 24 April 2007.



320

A DIAMOND NECKLACE, the herringbone necklace of stylised ribbon design and set with brilliant and single-cut diamonds, stamped '750', total diamond weight approximately 0.65 carat, length 40.5cm. £1,500–£2,000



321

A PAIR OF EARLY 20TH CENTURY NATURAL PEARL AND DIAMOND EARRINGS, the articulated row of old brilliant-cut diamonds suspending a natural pearl drop within a similarly-set diamond frame, mounted in platinum, retailer's case by Anne Bloom, New Bond Street, London, total diamond weight approximately 0.80 carat, length 30mm. £500–£700

According to a verbal report from GCS the pearls are natural, freshwater origin. Verbal report number 5785-3657.

322

A SMALL COLLECTION OF ENAMEL AND DIAMOND SET JEWELLERY, comprising a diamond single stone pendant, an 18ct gold enamel ladybird pendant and a pair of 18ct white gold openwork diamond heart earrings, Italian and UK assay marks respectively, *total diamond weight approximately 0.85 carat, earring length 15mm.* (3) **£200–£300**

323

A COLLECTION OF JEWELLERY, comprising a 9ct gold diamond-set safety-pin brooch by Tiffany & Co., 1977, a pair of diamond ear studs, a diamond single stone pendant on chain, and a diamond ring, *total diamond weight approximately 2.20 carats, various sizes.* (4) **£400–£600**

324

A COLLECTION OF JEWELLERY, comprising an Albert chain, the swivel fitting stamped '15ct', a 9ct gold safety pin brooch, a box-link chain stamped 14k, an identity bracelet, a knot ring and an 18ct white gold band ring. **£600–£800**

325

A COLLECTION OF ANTIQUE JEWELLERY, comprising four mid 19th century gold brooches, each with bead and wirework detailing and set with a diamond highlight, together with a pair of diamond-set studs of starburst design, cased, *various lengths.* **£300–£500**

326

THREE GEM-SET RINGS, comprising a 9ct gold emerald and diamond cluster ring, a shell cameo and marcasite ring, and a 9ct gold pink tourmaline and seed pearl flowerhead cluster ring, UK hallmarks, *various sizes.* **£200–£300**

327

An Art Deco style bracelet, the geometric links set throughout with paste stones, *length 19.3cm.*

£60-£80

328 Y

A COLLECTION OF CULTURED PEARL AND CORAL JEWELLERY, comprising three pairs of cultured pearl earrings and two heart-shaped pendants, together with two pairs of *Corallium rubrum* earrings, *various dimensions.* (7)

£200-£300

329

THREE 19TH CENTURY JEWELS, comprising a gold mounted agate panel brooch, an 18ct gold diamond set memorial ring, and a 9ct gold garnet ring with engraved decoration, *various sizes.*

£200-£300

330

A COLLECTION OF JEWELLERY, comprising a cabochon garnet and gold mounted stick pin, a freshwater pearl, ruby and diamond set stick pin, a gold Regimental brooch for the Princess Patricia's Canadian Light Infantry, a George V Royal cypher brooch, a three stone diamond ring, an opal ring, a Victorian oval gold brooch and a heart-shaped brooch. (8)

£240-£280

331

A COLLECTION OF JEWELLERY, to include various gem-set gold brooches, circa 1900, a Wedgwood blue and white plaque brooch, a Masonic stick pin, three gold mounted note charms, etc., *various sizes.* (Quantity)

£600-£800

332

A COLLECTION OF ANTIQUE JEWELLERY, comprising four gem-set gold bar brooches and two sapphire and diamond rings, *various sizes*. (6) £400–£600

333

A COLLECTION OF EARLY 20TH CENTURY BROOCHES, comprising three gem-set bar brooches, a seed pearl and diamond flowerhead brooch with sunburst surround, and a Royal Corps of Signals brooch, mounted in gold, *various dimensions*. (5) £400–£600

334

A COLLECTION OF JEWELLERY, to include various cultured pearl necklaces, a citrine ring, a carved green hardstone pendant, a hematite bead necklace, etc., *various lengths*. (Quantity) £600–£800

335

FOUR BEAD NECKLACES, strung with a combination of frosted rock crystal, lapis lazuli, cultured pearls, black hardstone and single-cut diamond highlights, two necklaces with maker's mark for J. Köhle, *various dimensions*. £100–£150

336

THREE GEM-SET CLASPS AND TWO PENDANTS, comprising two sapphire and diamond cluster clasps, a barrel-shaped diamond-set clasp with pierced scrollwork decoration, a citrine and diamond set pendant with gardrooned detailing, and a pear-shaped blue topaz pendant with brilliant-cut diamond accent, *total diamond weight approximately 0.55 carat, various lengths*. £600–£800

337

A COLLECTION OF ANTIQUE GENTLEMAN'S DRESS ACCESSORIES, comprising five studs, two buttons and a pair of cufflinks, all onyx set and mounted in gold, various lengths. £200–£300

338

A COLLECTION OF ANTIQUE JEWELLERY, to include two enamel and diamond plaques, circa 1900, later mounted as a ring and a brooch, plaque to ring with pseudo mark for Fabergé and 56 standard, an amethyst and seed pearl brooch, circa 1900, stamped '9CT', a 19th century Scottish agate brooch, a garnet and seed pearl ring, stamped '18CT', etc., various sizes. (7) £300–£500

339

A COLLECTION OF BLUE TOPAZ JEWELLERY, comprising two pairs of heart-shaped earrings, mounted in 9ct and 18ct gold, a pair of chandelier earrings, an oval-cut bracelet, and a heart-shaped bracelet, both bracelets stamped '14KT', various lengths. (Quantity) £400–£600

340

AN EARLY 20TH CENTURY FITTED CASE BY CARTIER, red leather and gilt tooled, post 1909, length 22cm. £40–£60





WATCHES

LOT

No 369

341

ROGER DUNSTER. A SILVER QUARTER REPEATING PAIR CASED REPOUSSE VERGE WATCH, CIRCA 1730.

Movement: gilded full plate, verge escapement, pierced and engraved balance cock, fusee and chain, steel hammers repeating on a bell, gilt metal cap.

Dial: white enamel, Roman numerals, arcaded minutes.

Case: silver, pierced and engraved inner case with scrolling foliage, dolphins and cherub, numbered 4681 4665, outer repousse depicting a basket of flowers, pierced and engraved decoration interspersed with flowers and shells.

Signed: movement and cap.

Dimensions: diameter 50mm.

£2,000–£3,000



342

T. F. COOPER, LONDON. A SILVER OPEN-FACED DUPLEX WATCH, 1828.

Movement: gilded three quarter plate, duplex escapement, no. 1175.

Dial: white enamel, Roman numerals, subsidiary seconds.

Case: silver, engine-turned back, milled band, London hallmark for 1828, maker's mark RD.

Signed: movement and dial signed T.F. Cooper, President Street West, King Square, London.

Dimensions: diameter 51mm.

£300–£500



343

ENGLISH. A SILVER PAIR CASED VERGE WATCH WITH 'SPEED THE PLOUGH' DIAL, 1848.

Movement: gilded full plate, verge escapement, pierced and engraved balance cock, no. 5863.

Dial: white enamel, Roman numerals, central polychrome enamel scene depicting a farmer ploughing a field within a landscape.

Case: silver, plain inner and outer, Birmingham hallmark for 1848, maker's mark R&C.

Signed: unsigned.

Dimensions: diameter 56mm.

Together with a silver fancy link Albert chain.

£400–£600

344

A 9CT GOLD FANCY LINK ALBERT CHAIN with T-bar fitting and hard stone-set watch key and carnelian seal each with chased decoration. £400-£600



345

SWISS. A GOLD OPEN-FACED WATCH, CIRCA 1880.

Movement: cylinder escapement.

Dial: gilt, engine-turned chapter ring, Roman numerals, centre engraved with foliate decorations.

Case: 18ct gold, intrinsically engraved floral decoration.

Signed: unsigned.

Dimensions: diameter 39mm.

Accessories: original receipt and presentation case. £500-£700

The original receipt, dated July 6th 1880, confirms the watch was purchased by a Mrs Witherden from James Price Jeweller, 101 High Street, Ashford, Kent for £6-5s-6d.

346

SWISS. A GUNMETAL OPEN-FACED JUMP HOUR KEYLESS WATCH WITH DIGITAL DIAL, CIRCA 1900.

Movement: lever escapement.

Dial: white enamel, silvered recessed cartouche, Arabic numbers, subsidiary seconds.

Case: gunmetal, gunmetal cuvette, no. 48011.

Signed: unsigned.

Dimensions: diameter 50.5mm. £300-£500



347

LUND BROS. LONDON. A SILVER CONSULAR CASED WATCH WITH DETACHABLE KEY, 1871.

Movement: gilded full plate, lever escapement, no. 1418.

Dial: white enamel. Roman numerals.

Case: silver, engine-turned back, milled band, no. 1418, London hallmark for 1871, maker's mark P.W (Phillip Woodman).

Signed: dial and movement signed Lund Bros, 41 Cornhill, London.

Dimensions: diameter 48mm. £200-£300

A. J. Lund patented the detachable key feature in 1870. Intended as an inexpensive alternative to the keyless going barrel watches, this invention did not catch on and very few have survived.

348

A. DEMEUR. A GOLD DUAL TIME WATCH WITH JUMPING SECONDS, CIRCA 1850.

Movement: jewelled lever escapement, twin winding barrels.

Dial: white enamel, two subsidiary dials for dual time, Roman numerals, subsidiary seconds, outer divisions for jumping seconds.

Case: 18ct gold, gold engine-turned cuvette, engraved decoration to the rear cover depicting battling cavalymen, no. 2660, maker's mark PHG.

Signed: cuvette signed A Demeur hologere du Roi, A Bruxelles, case back stamped FD Cartier.

Dimensions: diameter 50mm.

£2,600–£3,600

Demeur is recorded as living in Brussels around 1845 and working for the Royal court. (Loomes, *Watchmakers and Clockmakers of the World*, p. 210.)



349

SWISS. A GOLD OPEN-FACED JUMP HOUR KEYLESS WATCH, CIRCA 1895.

Movement: lever escapement.

Dial: white enamel, sucken jump hour display, outer minute track, subsidiary seconds, polychrome enamel floral garlands.

Case: 14ct gold, cuvette with engine-turned engraving, engine-turned case back with cartouche, no. 20677.

Signed: unsigned.

Dimensions: diameter 47mm.

£1,000–£1,500

350

LE ROI A PARIS. A GOLD JUMP HOUR WATCH, CIRCA 1830.

Movement: cylinder escapement.

Dial: silvered, engine-turned, aperture for jumping hours, subsidiary seconds.

Case: 18ct gold, gilt metal cuvette, engine-turned back.

Signed: movement and cuvette.

Dimensions: diameter 46mm.

£600–£800



351

G. RICHARDS, LONDON. A GOLD CONSULAR CASED WATCH, 1815.

Movement: gilded full plate, lever escapement, engraved balance cock, diamond endstone.

Dial: gold, Roman numerals, engine-turned centre, applied three-colour gold foliate decoration.

Case: 18ct gold, engine-turned, milled band, London hallmark for 1815, maker's mark SB.

Signed: movement signed G. Richards, London, no. 1904.

Dimensions: diameter 47.5mm.

£800–£1,000

352

D. ARNAUD Á MORGES. A GOLD DOUBLE DIALLED QUARTER REPEATING Á TOC CALENDAR WATCH, CIRCA 1780.

Movement: gilded, lever escapement, fusee and chain, polished steel hammers repeating á toc.

Dials: 1st dial - white enamel, Roman numerals, Arabic minute hand, central moon-phases indications; 2nd dial - white enamel, days of the week, date, month and the duration.

Case: gold, glazed covers.

Signed: dial and movement signed D. Arnaud á Morges.

Dimensions: diameter 50mm.

£4,000–£6,000

This rare double dialled watch with calendar not only features the date but also the months, their lengths, the days of the week and phases of the moon.



353

SWISS. A GOLD QUARTER REPEATING MUSICAL WATCH, CIRCA 1810.

Movement: cylinder escapement, two standing barrels for music and going trains, steel hammers repeating on coiled gongs, music playing on pinned disc, no. 1296.

Dial: gold, guilloché, Roman numerals.

Case: 18ct gold, gold cuvette, engine-turned, maker's mark T.F.

Signed: unsigned.

Dimensions: diameter 56.5mm.

£3,000–£5,000



354

JOHN SWAINE, LEEDS. A GOLD CONSULAR CASED WATCH, 1833.

Movement: gilded full plate, lever escapement, diamond endstone, no. 8114, gilt cap.

Dial: gold, engine-turned centre, applied Roman numerals, varicolour gold thistle swag decoration, subsidiary seconds.

Case: 18ct gold, engine-turned band, London hallmark for 1833, maker's mark WM WM.

Signed: movement signed John Swaine, Leeds.

Dimensions: diameter 48mm.

£1,200–£1,800

355

GARDNER, BELFAST. A GOLD CONSULAR CASED WATCH, CIRCA 1830.

Movement: gilded full plate, cylinder escapement, engraved balance cock, diamond endstone, gilt metal cap.

Dial: gold, applied Roman numerals, engine-turned centre, applied three colour gold floral garlands.

Case: 18ct gold, engraved floral motifs to the band and bow, maker's mark EJ.

Signed: movement.

Dimensions: diameter 47.5mm.

£800–£1,000



356

S. WILLIAMS DUBOIS. A FINE GOLD HUNTING CASED CHRONOMETER WATCH MADE FOR THE TURKISH MARKET WITH TWO BALANCE SPRINGS, CIRCA 1800.

Movement: spring detent escapement, two flat balance springs.

Dial: white enamel, gilt Turkish numerals, subsidiary seconds, gilt floral swags to the centre.

Case: 18ct gold, gold cuvette, finely engraved scrolling decoration with a basket of flowers, engraved trophy to the rear depicting flags and drums.

Signed: cuvette signed S. Williams Dubois, Locle.

Dimensions: diameter 50mm.

£3,000–£5,000

Samuel Dubois is listed as working in Le Locle, Switzerland in 1792. (Loomes, 'Watchmakers and Clockmakers of the World', p. 227).



357

SWISS. A GOLD AND ENAMEL HALF-HUNTING CASED WATCH, CIRCA 1900.

Movement: lever escapement.

Dial: white enamel, Roman numerals.

Case: 18ct gold, gold cuvette, glazed aperture, blue enamel Roman numerals on a pink translucent enamel chapter ring, no. 48568.

Signed: case signed CCE. Fres.

Dimensions: diameter 34mm.

£300–£500



358

LONGINES / WEST END WATCH CO. A SILVER HALF HUNTING CASED KEYLESS WATCH, IMPERATOR, CIRCA 1920.

Movement: cal. 1626N, lever escapement, no. 3905210.

Dial: white enamel, Roman numerals, subsidiary seconds.

Case: silver, silver cuvette, engine-turned covers, glazed aperture with blue enamel Arabic numerals, rear cover with cartouche, milled band, no. 38434.

Signed: case and movement signed Longines, dial signed West End Watch Co.

Dimensions: diameter 43mm.

Accessories: West End Watch Co. Bombay Calcutta presentation case.

£260–£360

This is a fantastic example in pristine condition with its attractive presentation case.

359

SWISS. A GOLD OPEN-FACE KEYLESS WATCH, KEW OBSERVATORY CERTIFIED, 1885.

Movement: jewelled lever escapement.

Dial: white enamel, Roman numerals, subsidiary seconds.

Case: 18ct gold, gold cuvette with inscription, case back with engraved initials, no. 120193, London hallmark for 1885, maker's mark C.N.

Signed: cuvette signed Kew Observatory Certification Watch, 82, 8 Marks, Gallicham, Jersey, V. J. Bailhache.

Dimensions: diameter 49mm.

£700–£1,000



360

PAUL BUHRE. A GOLD HUNTING CASED KEYLESS WATCH MADE FOR THE RUSSIAN MARKET WITH IMPERIAL ARMS, CIRCA 1900.

Movement: lever escapement.

Dial: white enamel, Roman numerals, Arabic outer track, subsidiary seconds.

Case: 14ct gold, gold cuvette with inscription, engine-turned covers, front with enamel imperial double headed eagle, no. 64805.

Signed: cuvette signed Paul Buhre supplier to the Court of His Imperial Highness in Russian.

Dimensions: diameter 54mm

£2,000–£3,000

361

SWISS. A LADY'S GOLD OPEN-FACED KEYLESS WATCH, CIRCA 1880.

Movement: cylinder escapement.

Dial: gilt, engine-turned chapter ring, cartouches with Roman numerals on pink enamel background, white enamel centre with gilt decoration, applied floral decoration to the outer track.

Case: 18ct gold, gilt metal cuvette, back and band intrinsically engraved with foliate decoration, cartouche to the centre.

Signed: unsigned.

Dimensions: diameter 33.5mm.

£500–£700



362

WALTHAM. A LADY'S GOLD HUNTING CASED KEYLESS WATCH, CIRCA 1892.

Movement: lever escapement, no. 5965331.

Dial: cream, Arabic numerals, pink scalloped edge with gold detail, subsidiary seconds, polychrome enamel painted detail of a posy of clover with insect.

Case: 14ct gold, covers finely engraved with engine-turned decoration and leaf motif, no. 47506.

Signed: case, dial and movement.

Dimensions: diameter 39mm.

Accessories: presentation case.

£500–£700

363

SWISS. A GOLD ENAMEL AND DIAMOND-SET HUNTING CASED KEYLESS WATCH, CIRCA 1900.

Movement: lever escapement, 17 jewels.

Dial: white enamel, Roman numerals, subsidiary seconds.

Case: 18ct gold, blue translucent enamel over an engine-turned ground to the covers, polychrome enamel female portrait, diamond-set floral decoration, polychrome enamel flowers to the reverse, pearl-set bezels.

Signed: unsigned.

Dimensions: diameter 45mm.

£1,000–£1,500



364

WALTHAM. A GOLD HUNTING CASED KEYLESS WATCH WITH VARI-COLOUR GOLD DECORATION, CIRCA 1907.

Movement: full plate with engraved decoration, 17 jewels, no. 16132468.

Dial: white enamel, Roman numerals, outer Arabic track, subsidiary seconds.

Case: 14ct gold, gold cuvette, covers with engine-turning, applied varicolour gold decoration depicting a stag and floral decoration, no. 568477, stamped Roy.

Signed: dial, movement signed P. L. Bartlett, Waltham, Mass.

Dimensions: diameter 54.5mm.

£700–£900

365

SWISS. A GILT METAL KEYLESS CALENDAR WATCH WITH MOON-PHASES, CIRCA 1900.

Movement: lever escapement.

Dial: white enamel. Roman numerals, subsidiary dials for constant seconds with aperture for moon-phases, day, date and month, highlighted with gilt stars and floral motifs.

Case: gilt metal, gilt cuvette, no. 61271.

Signed: unsigned, case stamped Principal.

Dimensions: diameter 52mm.

Accessories: leather fitted case.

£100–£150



366

PALFRYMAN & PYKE, BIRKENHEAD, A GOLD OPEN-FACED KEYLESS WATCH WITH STOP/START CENTRE SECONDS, 1889.

Movement: gilded three quarter plate, lever escapement, no. 96038.

Dial: white enamel, Roman numerals, Arabic outer seconds.

Case: 18ct gold, gold cuvette, hinged back, Chester hallmark for 1889, maker's mark EJW.

Signed: dial and movement.

Dimensions: diameter 56mm.

£1,200–£1,800



367

SWISS. A GOLD MINUTE REPEATING HALF-HUNTING CASED KEYLESS WATCH, CIRCA 1900.

Movement: lever escapement, repeating on coiled gongs.

Dial: white enamel, Roman numerals, subsidiary seconds.

Case: 18ct gold, gold cuvette, glazed aperture with blue enamel Roman numerals, translucent enamel initials to the rear cover, no. 15186.

Signed: unsigned.

Dimensions: diameter 51mm.

£2,000–£3,000



368

SWISS. A GOLD HUNTING CASED QUARTER REPEATING CHRONOGRAPH WATCH, CIRCA 1890.

Movement: lever escapement, polished steel hammers repeating on coiled gongs.

Dial: white enamel, Roman numerals, Arabic outer track for chronograph.

Case: 18ct gold, gold cuvette, covers with engraved scrolling floral decoration, no. 62716, maker's mark LW.

Signed: unsigned.

Dimensions: diameter 51.5mm.

£1,500–£2,000

369

E. J. DENT, LONDON. A FINE GOLD SLIM HALF-HUNTING CASED WATCH WITH NICOLE PATENT KEYLESS WINDING, 1849.

Movement: gilded three quarter plate, Nicole Patent winding, lever escapement, no. 14804.

Dial: gilded, engine-turned chapter ring, Roman numerals, subsidiary seconds.

Case: 18ct gold, engine-turned cover and back, glazed aperture, black enamel Roman numerals, no. 14804, London hallmark for 1849, maker's mark AN (Adolph Neilsen).

Signed: movement signed E. J. Dent, London, Watchmaker's to the Queen, Patent.

Dimensions: *diameter 46.5mm.*

Together with a fitted leather presentation case with hinged strut.

£2,000–£3,000

This fine gold watch is an early example of the first stem wind watches produced. Adolphe Nicole took out an English patent for keyless winding with button hand setting in 1844. Dent was the sole licensee of Nicole's keyless winding and used it from 1846 to 1862.



370

LANCASHIRE WATCH CO. LTD. LONDON & PRESCOT. A SILVER CONSULAR CASED WATCH, 1904.

Movement: gilt full plate, lever escapement, no. 726677.

Dial: cream, Roman numerals, subsidiary seconds.

Case: silver, milled band, engraved cartouche to the rear cover, no. 726767, Chester hallmark for 1904, case maker's mark T.P.H (Thomas Peter Hewitt).

Signed: dial.

Dimensions: diameter 57.5mm.

£100-£200



371

C. F. CALLAWAY, BATH. A SILVER OPEN-FACED KEYLESS WATCH, CIRCA 1912.

Movement: Swiss jewelled lever escapement.

Dial: white enamel, Roman numerals, subsidiary seconds.

Case: silver, silver cuvette, back with engraved initials, no. 146634,

Birmingham hallmark for 1912, maker's mark A.L.D.

Signed: dial signed C. F. Callaway, Bath, movement stamped D.F.&C.

Dimensions: diameter 49mm.

£60-£80

372

E. HOWARD WATCH CO., BOSTON. A WHITE GOLD OPEN-FACED KEYLESS WATCH, CIRCA 1920.

Movement: lever escapement, 17 jewels, no. 18722.

Dial: silvered, Arabic numerals, subsidiary seconds.

Case: 14ct gold, hinged back, engraved decoration to the bezels and bow, engraved monogram to the back, no. 216402.

Signed: case, dial and movement.

Dimensions: diameter 43mm.

£200-£300



373

ZENITH, RETAILED BY BIRCH & GAYDON LTD. A SILVER TRENCH WATCH, LAND & WATER, CIRCA 1917.

Movement: manual winding.

Dial: black, white Arabic numerals, subsidiary seconds.

Case: silver, screw-down bezel, no. 3049901, Glasgow import mark for 1917.

Signed: case and movement.

Dimensions: diameter 34.5mm.

£150-£200

374

THOMAS RUSSELL & SON, LIVERPOOL. A SILVER KARRUSEL OPEN-FACED KEYLESS WATCH, 1939.

Movement: gilded three quarter plate, 34-minute karrusel lever escapement, no. 101072.

Dial: white enamel, Arabic numerals, centre seconds.

Case: silver with gold details, silver cuvette, case back with engraved Art Deco style monogram, no. 101072, Chester hallmark for 1939, maker's mark F.T (Fred Thoms).

Signed: dial and movement.

Dimensions: diameter 56mm.

£1,200–£1,800



375

S. SMITH & SON. A SILVER HUNTING CASED KEYLESS WATCH INSCRIBED, SIEGE OF LADYSMITH 118 DAYS 1899 - 1900 H. J. WHITE. L. S. H.M.S. POWERFUL, CIRCA 1900.

Movement: three quarter plate, lever escapement.

Dial: white enamel, Roman numerals, subsidiary seconds, no. 55-48.

Case: silver, silver cuvette, no. 1058224.

Signed: dial and movement signed S. Smith & Son, 9 Strand watchmakers to the Admiralty, London.

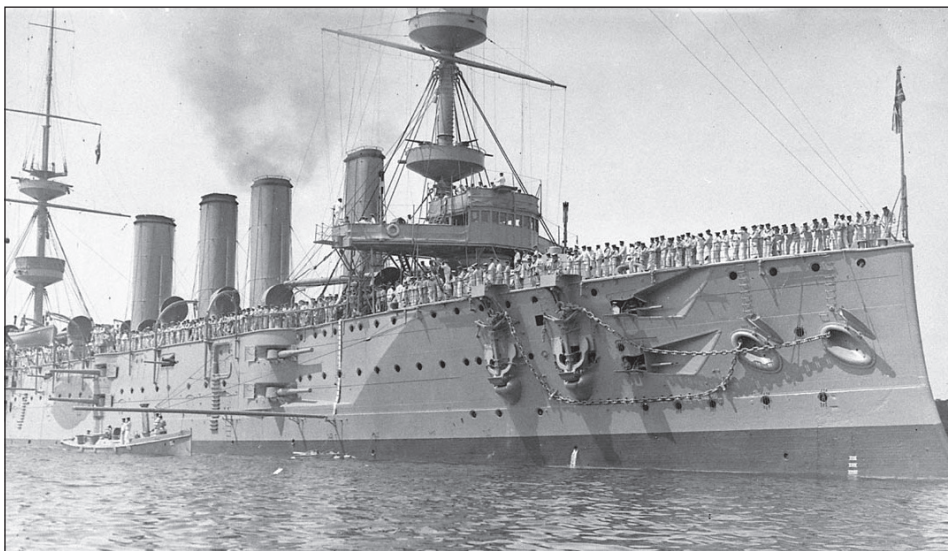
Dimensions: diameter 50.5mm.

£400–£600

This watch was presented to Petty Officer Henry James White who served on H.M.S. Powerful in the Boer War in South Africa between 11th October 1899 and 31 May 1902.

In 1895, HMS Powerful was launched, a first class cruiser. Following the outbreak of the Anglo-Boer War, HMS Powerful was ordered to Durban, South Africa. There was fierce fighting in the province of Natal with a large British force concentrating at the garrison town of Ladysmith. Support was needed so a Naval Brigade was sent from HMS Powerful and her sister ship HMS Terrible with two 4.7 inch and four 12 pound naval guns. It was a journey of 189 miles by rail, oxen pulled carriages and finally when the oxen died the sailors had to pull the guns themselves.

The guns assisted in keeping the Boers at bay but were unable to prevent the siege. Over forty men from HMS Powerful died. On their return to Portsmouth, the crew were given a heroes welcome. A banquet was held at Portsmouth Town Hall where the Major presented a silver watch to each member of the crew.



H.M.S. Powerful

376

T. R. RUSSELL, LIVERPOOL. A GOLD HALF-HUNTING CASED KEYLESS WATCH WITH STOP/START CENTRE SECONDS, 1884.

Movement: gilded three quarter plate, lever escapement, no. 95275.

Dial: white enamel, Roman numerals, centre seconds.

Case: 18ct gold, gold cuvette with inscription, aperture to the cover with blue enamel Roman numerals, London hallmark for 1884, maker's mark HW.

Signed: dial and movement signed T. R. Russell, 18 Church St., Liverpool.

Dimensions: diameter 51mm.

£1,200–£1,800



377

WASSELL & HALFORD, LONDON. A GOLD HUNTING CASED KEYLESS WATCH WITH WINDING BUTTON, 1876.

Movement: gilded three-quarter plate, lever escapement, diamond endstone, no. 1394.

Dial: white enamel, Roman numerals, subsidiary seconds.

Case: 18ct gold, gold cuvette with engraved inscription, winding button to the band, no. 1394, London hallmark for 1876, maker's mark HCD.

Signed: movement and dial signed Wassell & Halford, 43 Fenchurch St., London.

Dimensions: diameter 50.5mm.

£1,800–£2,600

378

PAUL DITISHEIM, SOLVIL. A GOLD OPEN-FACED KEYLESS WATCH, 1927.

Movement: lever escapement, no. 739669.

Dial: white enamel, Arabic numerals, subsidiary seconds.

Case: 9ct gold, gold cuvette, no. 363810, maker's mark A.L.D (Dennison Watch Case Co Ltd), Birmingham hallmark for 1927.

Signed: dial.

Dimensions: diameter 49mm.

£300–£500



379

PATEK PHILIPPE, RETAILED BY THE COWELL & HUBBARD CO., CLEVELAND, OHIO. A GOLD OPEN-FACED KEYLESS WATCH, CIRCA 1900.

Movement: lever escapement, wolf's tooth winding, Pat. Jan 13 1891, no. 103947.

Dial: white enamel, Arabic numerals, subsidiary seconds.

Case: 18ct gold, gold cuvette, no. 217257.

Signed: case, cuvette and movement.

Dimensions: diameter 44mm.

£1,500–£2,000

380

PATEK PHILIPPE, RETAILED BY GONDOLO & LABOURIAU RIO DE JANEIRO, A GOLD OPEN-FACED KEYLESS WATCH, CHRONOMETRO GONDOLO, CIRCA 1913.

Movement: 20" moustache lever escapement, snail-form cam regulator, wolf's tooth winding, no. 181932.

Dial: white enamel, Roman numerals, outer Arabic track, subsidiary seconds.

Case: 18ct gold, gold engraved cuvette, engine-turned back, no. 246282.

Signed: case, dial, movement and cuvette.

Dimensions: diameter 55.5mm.

£2,000–£3,000

Patek Philippe began selling watches in South American through the retailer Gondolo and Labouriau, based in Rio de Janeiro, in 1872.

The "Chronometro Gondolo" watches, produced between 1902 and 1930, were designed exclusively for the retailer and were made with specific specifications to differentiate them from other watches produced by Patek. These special high precision watches include a moustache lever, gold-plated wheels for the train, keyless wolf's tooth winding and precision regulator with snail-form cam.



381

ROLEX. A LADY'S SMALL GOLD WRISTWATCH, REF. 8901, PRECISION, CIRCA 1960.

Movement: cal. 1401, manual winding, 18 jewels.

Dial: silvered, applied baton indexes.

Case: 18ct gold, snap-on back, Glasgow import mark for 1960.

Signed: case, dial and movement.

Dimensions: diameter 15mm.

Accessories: presentation case.

£200–£300



382

ROLEX, RETAILED BY THE ALEX CLARK CO. A LADY'S GOLD WRISTWATCH, REF. 3852, CIRCA 1923.

Movement: manual winding, 15 jewels.

Dial: two-tone silvered, Arabic and baton indexes, subsidiary seconds.

Case: 18ct gold, hinged back, no. 20501, Glasgow import mark for 1923.

Signed: case, dial and movement.

Dimensions: diameter 24.5mm.

£200–£400

383

TUDOR. A GOLD WRISTWATCH, CIRCA 1953.

Movement: cal. 1187/94, manual winding, 15 jewels.

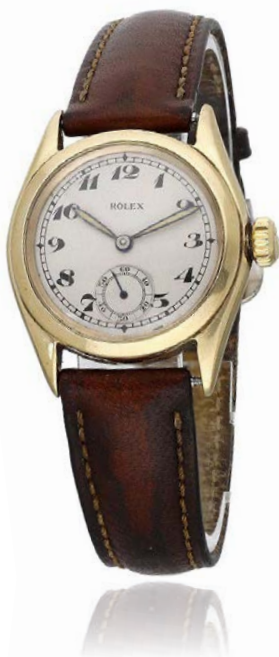
Dial: silvered, honeycomb pattern, applied Arabic and baton indexes, centre seconds.

Case: 9ct gold, snap-on back, no. 12856, 561161, Birmingham hallmark for 1953.

Signed: dial and movement, case signed Dennison for Rolex.

Dimensions: diameter 30.5mm.

£300–£500



384

ROLEX. A GOLD WRISTWATCH, REF. 6020, CIRCA 1950.

Movement: manual winding, 17 jewels, patented Superbalance.

Dial: silvered, Arabic numerals, subsidiary seconds.

Case: 9ct gold Oyster case, screw-down back and crown, no. 753579, Glasgow import mark for 1950.

Signed: case, dial and movement.

Dimensions: diameter 30.5mm.

£400–£600

385

JAEGER-LECOULTRE. A CHROME PLATED STAINLESS STEEL MILITARY ISSUE WRISTWATCH, 'DIRTY DOZEN', CIRCA 1944.

Movement: cal. 479, manual winding, no. 318997.

Dial: black, Arabic numerals, outer minute track, subsidiary seconds, broad arrow.

Case: chrome plated, screw-down steel back, engraved '283160 ↑ WWW F12527'.

Signed: case, dial and movement.

Dimensions: diameter 35mm.

£1,500–£2,000



386

ROLEX. A STAINLESS STEEL CENTRE SECONDS WRISTWATCH, REF. 4444, OYSTER, CIRCA 1957.

Movement: manual winding, 15 jewels.

Dial: silvered, Arabic numerals, centre seconds.

Case: stainless steel Oyster case, screw-down back and crown, no. 357214.

Signed: case, dial and movement.

Dimensions: diameter 32mm

£600–£800

387

OMEGA. A STAINLESS STEEL AUTOMATIC WRISTWATCH, REF. 2846 15 SC, SEAMASTER, CIRCA 1958.

Movement: cal. 501, automatic, 20 jewels, no. 16509119.

Dial: silvered with cross-hair, applied baton indexes, centre seconds.

Case: stainless steel, snap-on back, no. 2848.

Signed: case, dial and movement.

Dimensions: diameter 33.5mm.

£400–£600



388

ROLEX. A STAINLESS STEEL WRISTWATCH REF. 6466, OYSTERDATE PRECISION, CIRCA 1965.

Movement: cal. 515, manual winding, 17 jewels.

Dial: silvered, applied baton indexes, magnified date aperture, centre seconds.

Case: stainless steel Oyster case, screw-down back and crown, no. 1318959, stainless steel Oyster bracelet.

Signed: case, dial, movement and bracelet.

Dimensions: diameter 30mm, bracelet circumference approximately. £700–£900

389

MONOPOL. A SMALL GOLD HUNTING CASED KEYLESS WATCH, CIRCA 1900.

Movement: cylinder escapement.

Dial: white enamel, Arabic numerals.

Case: 14ct gold, gilt cuvette, no. 244849.

Signed: case and movement.

Dimensions: diameter 31mm.

£300–£500



390

ROLEX. A LADY'S GOLD CUSHION-FORM WRISTWATCH, CIRCA 1929

Movement: manual winding, 15 jewels

Dial: silvered, engine-turned, Arabic numerals

Case: 9ct gold, snap-on back, no. 66373 1156A, Glasgow import mark for 1929, lacking winding crown, associated gold plated bracelet

Signed: case and movement

Dimensions: length 23.5mm, width 24mm.

£80–£120

391

INTERNATIONAL WATCH CO. A GOLD HUNTING CASED KEYLESS WATCH, CIRCA 1920.

Movement: jewelled lever escapement, no. 727443.

Dial: gilt, Arabic numerals, subsidiary seconds.

Case: 14ct gold, gold cuvette, no. 879611.

Signed: case, dial, movement and cuvette.

Dimensions: diameter 52mm.

£600–£800



392

ROLEX. A LADY'S GOLD SQUARE WRISTWATCH, CIRCA 1930.

Movement: manual winding.

Dial: gilt. Arabic numerals within silvered cartouches.

Case: 9ct gold, hinged back, no. 1705.

Signed: case, dial and movement

Dimensions: length 25mm, width 25mm.

Accessories: unsigned 9ct gold expanding bracelet, fitted presentation case.

£200–£300

393

BAUME & MERCIER. A LADY'S WHITE GOLD OVAL WRISTWATCH, REF. 38232, CIRCA 1970.

Movement: cal. BM 775, manual winding, 17 jewels.

Dial: blue.

Case: 18ct white gold, snap-on back, sapphire cabochon-set winding crown, no. 4438 72, Birmingham import mark for 1972.

Signed: case, dial and movement.

Dimensions: length 25.5mm, width 21.5mm.

£260-£360



394

LONGINES. A GOLD PLATED AUTOMATIC WRISTWATCH, REF. L4.721.2, CIRCA 2000.

Movement: automatic.

Dial: white, Roman numerals, aperture for date, centre seconds.

Case: gold plated, snap-on back, no. 32055757, gold plated buckle.

Signed: case, dial, movement and buckle.

Dimensions: diameter 34mm

Accessories: presentation case.

£150-£200

395

OMEGA. A STAINLESS STEEL AUTOMATIC WRISTWATCH, REF. 2767-65C, SEAMASTER, CIRCA 1954.

Movement: cal. 354, bumper automatic, 17 jewels, no. 14271509.

Dial: two-tone silvered, applied Arabic and dagger indexes.

Case: stainless steel, snap-on back.

Signed: case, dial and movement.

Dimensions: diameter 34mm.

Together with an unsigned expandable bracelet.

£200-£300



396

JAEGER LECOULTRE. A GILT-METAL TRAVEL TIMEPIECE WITH ALARM, CIRCA 1950.

Movement: manual winding.

Dial: silvered chapter ring, applied baton indexes, gilt central alarm disc.

Case: gilt-metal, black bezel with gilt hour markers, hinged strutt, no. 757953.

Signed: case, dial and movement.

Dimensions: diameter 41.5mm.

Accessories: Jaeger-LeCoultre service receipt dated 1959.

£200-£300

397

CHANEL. A WHITE CERAMIC AND DIAMOND-SET WRISTWATCH WITH DATE AND BRACELET, REF. D.N.02388, J12, CIRCA 2010.

Movement: quartz.

Dial: silvered, diamond-set indexes, aperture for date.

Case: white ceramic, stainless steel back secured by eight screws, calibrated rotating bezel, white ceramic bracelet.

Signed: case, dial, movement and bracelet.

Dimensions: diameter 38.5mm, bracelet circumference approximately 175mm.

Accessories: two spare links.

£400-£600



398

THE BRADFORD EXCHANGE - ROYAL MARINES COMMANDO. A STAINLESS STEEL CHRONOGRAPH WRISTWATCH, BY SEA BY LAND, CIRCA 2010.

Movement: quartz.

Dial: black, applied indexes, subsidiary dials for constant seconds, 60-minute and 12-hour registers, aperture for date.

Case: stainless steel, screw-down back, stainless steel bracelet.

Signed: certificate signed The Bradford Exchange

Dimensions: diameter 42.5mm, bracelet circumference approximately 200mm.

Accessories: certificate, instructions and presentation case. £60-£80

399

ROLEX. A LADY'S STAINLESS STEEL AUTOMATIC WRISTWATCH WITH DATE AND BRACELET, REF. 69160, OYSTER PERPETUAL DATE, CIRCA 1991.

Movement: cal. 2135, automatic, 26 jewels.

Dial: white, applied baton indexes, magnified date aperture, centre seconds.

Case: stainless steel Oyster case, screw-down back and crown, no. X711149, stainless steel Jubilee bracelet.

Signed: case, dial, movement and bracelet.

Dimensions: diameter 26mm, bracelet circumference approximately 170mm.

Accessories: booklet, spare links and presentation case.

£1,500-£2,000



400

BULGARI. A STAINLESS STEEL AUTOMATIC DIVER'S WATCH WITH DATE, REF. SD39S, DIAGONO SCUBA, CIRCA 2000.

Movement: cal. GP220MBBR, automatic, 21 jewels.

Dial: black, Arabic numerals and dot indexes, aperture for date, centre seconds.

Case: stainless steel, screw-down back and crown, calibrated rotating bezel, no. L4263, stainless steel folding clasp.

Signed: case, dial, movement and buckle.

Dimensions: diameter 37.5mm.

£400-£600

401

ROLEX. A STAINLESS STEEL AUTOMATIC DUAL TIME WRISTWATCH WITH DATE, REF. 1675, GMT-MASTER, 'PEPSI', CIRCA 1964.

Movement: cal. 1560, automatic, 26 jewels.

Dial: black, dot, triangular and baton indexes, magnified date aperture, centre seconds.

Case: stainless steel Oyster case, screw-down back and crown, calibrated 'Pepsi' bezel, no. 1255931, stainless steel Oyster bracelet.

Signed: case, dial, movement and bracelet.

Dimensions: diameter 39mm, bracelet circumference approximately 200mm.

Accessories: purchase receipt dated 1990.

£5,000–£7,000

Rolex introduced the Reference 1675 GMT-Master in 1959, production ceased in 1980. These dual time tool watches were first developed for airline pilots to track multiple time zones. They have since become nostalgic symbols of the time they evoke encapsulating enduring style and elegance.



402

SWISS. A LADY'S PLATINUM AND DIAMOND-SET COCKTAIL WATCH, CIRCA 1950 AND LATER.

Movement: later, manual winding, 17 jewels.

Dial: silvered, Arabic numerals, subsidiary seconds.

Case: platinum, diamond-set bezel and lugs in a sweeping design, no. 59300.

Signed: movement unsigned.

Dimensions: diameter 22mm.

£200–£300



403

BUECHE-GIROD. A LADY'S GOLD AND DIAMOND-SET BRACELET WATCH, CIRCA 1970.

Movement: manual winding, 17 jewels.

Dial: silvered, applied baton indexes.

Case: 9ct gold, snap-on back (stamped RCK), diamond-set bezel, 18ct gold integral woven bracelet.

Signed: dial and movement, bracelet stamped M & W Paris.

Dimensions: length 17.5mm, width 17mm, bracelet circumference approximately 160mm.

£1,000–£1,500

404

INTERNATIONAL WATCH CO. A LADY'S GOLD BRACELET WATCH, CIRCA 1965

Movement: cal. 431, manual winding, no. 621943.

Dial: silvered, applied baton indexes.

Case: 18ct gold, snap-on back, no. 1715509, integral three-colour gold bracelet, London import mark for 1965.

Signed: case, dial, movement and bracelet.

Dimensions: length 12mm, width 18mm, bracelet circumference approximately 160mm.

£1,000–£1,500



405

OMEGA. A LADY'S GOLD SQUARE BRACELET WATCH, 1966.

Movement: cal. 650, manual winding, 17 jewels, no. 21090754.

Dial: gilt, applied baton indexes.

Case: 18ct gold, snap-on back, integrated woven bracelet, no. 7115722, London hallmark for 1966, maker's mark OWC.

Signed: case, dial movement and bracelet.

Dimensions: length 14mm, width 14mm, bracelet circumference.

£800–£1,000

406

EBEL. A LADY'S STAINLESS STEEL AND DIAMOND-SET WRISTWATCH WITH BRACELET, NO. 5349, WAVE, CIRCA 2000

Movement: quartz

Dial: grey, applied baton indexes

Case: stainless steel, gold bezel set with diamonds, two-tone wave link bracelet

Signed: dial and bracelet

Dimensions: diameter 23mm, bracelet circumference approximately 150mm.

£300-£400



407

THE ROYAL DIAMOND. A WHITE GOLD AND DIAMOND-SET RECTANGULAR BRACELET WATCH, CIRCA 2000.

Movement: quartz.

Dial: gilt, diamond-set linear design.

Case: 18ct gold, snap-on back, integral gold bracelet.

Signed: case and dial.

Dimensions: length 29.5mm, width 25.5mm, bracelet circumference approximately 170mm.

£2,600-£3,600

408

CARTIER. A STAINLESS STEEL AND GOLD SQUARE WRISTWATCH WITH DATE AND BRACELET, REF. 187901, SANTOS, CIRCA 1995.

Movement: quartz.

Dial: silvered, Roman numerals, secret signature at X, aperture for date.

Case: stainless steel, back secured by eight screws, gold bezel secured by eight screws, sapphire-set winding crown, no. 39520, stainless steel bracelet with gold screws.

Signed: case, dial, movement and bracelet.

Dimensions: length including lugs 41mm, width 29mm, bracelet circumference approximately 180mm.

Accessories: blank certificate, booklet, spare link and presentation case.

£1,500-£2,000



409

JAEGER-LECOULTRE. A STAINLESS STEEL AUTOMATIC REVERSIBLE WRISTWATCH WITH DATE AND BRACELET, REF. 290.8.60, REVERSO GRAN SPORT, CIRCA 2000.

Movement: automatic, 31 jewels.

Dial: black, hobnail centre, Arabic numerals, aperture for date, centre seconds.

Case: stainless steel Reverso case, ribbed band detail, no. 2084538, stainless steel brick link bracelet.

Signed: case, dial, movement and bracelet.

Dimensions: length including lugs 43mm, width 26mm, bracelet circumference approximately 180mm.

£1,500-£2,000

410

PATEK PHILIPPE. A RARE GOLD TWENTY DOLLAR LIBERTY COIN WATCH, REF. 802, CIRCA 1974.

Movement: cal. 175, manual winding, 18 jewels, no. 1179594.

Dial: gilt, baton indexes.

Case: 18ct gold, snap-on back with engraved inscription, concealed within an American 1924 twenty dollar Liberty gold coin, no. 2743256.

Signed: case, dial and movement.

Dimensions: *diameter 34.5mm.*

£10,000–£15,000

Coin watches were first produced in the 1920's. These rare ultra thin timepieces are made of two actual coins to construct the outer case.

Prestigious brands such as, Cartier, Patek Philippe, Piaget, Corum and Vacheron Constantin have produced examples of these interesting, collectable, novelty timepieces over the years.

Patek Philippe produced a number of variants using different coins and monetary values, approximately only 200 of these fine rare timepieces were produced.



411

SACAR. A GOLD AND DIAMOND-SET BRACELET WATCH, REF. 9076-1, VISCONTI, CIRCA 1995.

Movement: quartz.

Dial: gilt.

Case: 18ct gold, back secured by six screws, integrated gold and diamond-set bracelet.

Signed: dial

Dimensions: diameter 30mm, bracelet circumference approximately 175mm.

£2,600–£3,600



412

INTERNATIONAL WATCH CO. A GOLD WRISTWATCH, CIRCA 1950.

Movement: cal. 89, manual winding.

Dial: silvered, applied Arabic numerals, centre seconds.

Case: 18ct gold, snap-on back, no. 1180519.

Signed: case, dial and movement.

Dimensions: diameter 34.5mm.

£500–£700

413

PATEK PHILIPPE. A GOLD WRISTWATCH, REF. 3796, CALATRAVA, CIRCA 1995.

Movement: cal. 215, manual winding, 18 jewels, stamped with the Seal of Geneva, no. 1846265.

Dial: silvered, applied faceted baton indexes, subsidiary seconds.

Case: 18ct gold, snap-on back, no. 2964656, 18ct gold buckle.

Signed: case, dial, movement and buckle.

Dimensions: diameter 31mm.

Accessories: pouch.

£5,000–£7,000

Patek Philippe launched the reference 3796 in 1982 and production ceased in 1999. Inspired by the classic 1930s ref. 96, whose design was rooted in the timeless aesthetic of the Bauhaus movement, characterised by clean lines, geometric forms and functionality.



414

PATEK PHILIPPE. A GOLD WRISTWATCH, REF. 5096, CALATRAVA, CIRCA 1995.

Movement: cal. 215, manual winding, 18 jewels, stamped with the Seal of Geneva, no. 1850823.

Dial: gilt, applied faceted indexes, subsidiary seconds.

Case: 18ct gold, screw-down sapphire crystal display back, no. 2984751, 18ct gold buckle.

Signed: case, dial, movement and buckle.

Dimensions: *diameter 33mm.*

Accessories: pouch

£6,000–£8,000

The Patek Philippe reference 5096 was produced for a short period from 1996 to 1999. This Calatrava model derives its inspiration from the original Calatrava reference 96 which was introduced in 1932, and was produced until 1973.

The ref. 5096 features a larger 33mm diameter case with a sapphire crystal display back showcasing the intricate details of the movement.

This is a fantastic opportunity to acquire this rare reference.



415

ORIS. FIVE WRISTWATCH TOGETHER WITH TWO KEYLESS POCKET WATCHES.

The group comprising: a plated rectangular manual winding watch; a plated manual winding watch with date; a steel manual winding watch with date; a plated rectangular manual winding watch and two nickel plated open-faced keyless watches (7) £60-£80

416

A GROUP OF SEVEN WRISTWATCHES.

The group comprising: a steel automatic Omax Day-Date; a plated automatic Limit Day-Date; a steel Para Shock Chirag; a steel Para Shock Benrus; a steel Chancellor De Lux antimagnetic; a plated doublematic MuDu and a plated doublematic MuDu with date. (7) £60-£80

417

TISSOT. A GROUP OF SIX STAINLESS STEEL WRISTWATCHES.

The group comprising: a quartz Seastar with date; an octagonal quartz Seastar with date; a rectangular quartz watch with bracelet; a rectangular quartz Seastar with date; a manual winding Seastar Seven and a automatic PR 516 wristwatch with date. (6) £60-£80

418

A GROUP OF FIVE WATCHES.

The group comprising: a nickel plated keyless pocket watch converted to a wristwatch; a steel manual winding Ulysse Nardin watch; a gold plated manual winding rectangular Ulysse Nardin watch; a silver manual winding watch and a gold plated manual winding Veri-thin Gruen watch. (5) £40-£60

419

OMEGA. THREE WRISTWATCHES, REF. 196.0264 & 195.0015, CIRCA 1980.

Movements: quartz.

Dials: 1st & 2nd: gilt; 3rd: silvered.

Cases: 1st & 2nd: gold plated; 3rd: stainless steel, tapered bracelet.

Signed: cases, dials and movements.

Dimensions: *lengths* - 1st & 2nd: 29mm; 3rd: 38.5mm. (3) £150-£200

420

ROTARY & PHILIP STEIN. THREE WRISTWATCHES, CIRCA 2010.

1st: Rotary gilt metal automatic watch, 1895 series 400; 2nd: Philip Stein stainless steel quartz watch, Ref. PS3X, Signature; 3rd: Philip Stein stainless steel dual time quartz watch, Teslar.

Dimensions: *lengths including lugs* - 1st: 53mm; 2nd: 56.5mm; 3rd: 50mm. (3) £80-£100



OBJECTS OF VERTU

LOT

No 442



421

AN EDWARD VII 9CT GOLD COMBINED SOVEREIGN AND VESTA CASE, with push release for the coin compartment beneath the suspension loop, maker 'W N', Chester 1904, length 7cm.

£600–£800

422

AN EDWARD VII 15CT GOLD COMBINED SOVEREIGN AND VESTA CASE, engraved with formal scrolling foliage and monogram, with push release to the coin compartment beneath the suspension loop, Chester 1902, length 7cm.

£800–£1,200



423

A BRASS POCKET BAROMETER AND TWO SOVEREIGN CASES, the barometer by Thomas, Aberystwyth, in leather travelling case, a silver case for sovereigns and half sovereigns, Birmingham 1909, and a gilt metal sovereign case by Dennison. (3)

£60–£80



424

GRAND INDEPENDENT LODGE OF ODDFELLOWS: A SILVER PAST SECRETARY'S BADGE, oval, with suspension loop, obverse a secretary seated at his desk, within a shield-shaped reserve surmounted by a standish and crossed quills, the reverse with presentation within a similar reserve, by Samuel Meriton, London 1796, *dimensions 92 x 75mm.* £300-£400

The inscription reads: 'T S C (?) Grand Independent Lodge of Oddfellows, Dukes Head, Rotherhithe'.



425

TWO GOLD RETRACTABLE PENCILS, the first of plain finish, the shaft stamped '15ct', the second, pen and pencil combination, with engraved presentation inscription, stamped '9ct', the third plated example, pen and pencil combination, signed 'ALLERDING & SON, SYDNEY' to the shaft, all three with bloodstone inset terminals, and hinged suspensory loops, *lengths extended 16.5, 14 and 13cm.* (3) £400-£600

426

A 9CT GOLD SNOOKER CHALK HOLDER, of plain polished design, UK hallmark, *width 33mm.*

£300-£500





427

A RUSSIAN ICON OF CHRIST PANTOCRATOR, LATE 19TH CENTURY, the Saviour represented full length, holding the Gospels, his right hand raised in blessing, the silver oklad engraved with a sunburst and clouds, its panelled border with roundel crosses at intervals and with base inscription, assay master workmaster 'F W', probably for Franz Würbel, 1870, *dimensions 14 x 9cm.* £200–£300

The silversmith Franz Würbel was active in Moscow in the mid-to-late 19th century.

428

AN AUSTRIAN PATINATED AND COLD PAINTED BRONZE BY FRANZ BERGMANN, modelled as the goddess Hathor enthroned, the deity divided and hinged, opening to reveal a gilt nude maiden, also seated, *height 14cm.* £600 800

Hathor, the ancient Egyptian goddess associated with motherhood and sexuality, music and dance.



429

A GOLD AND GEM-SET EVENING BAG, CIRCA 1960, of woven design, with repeating chevron motif and ruby and diamond flowerhead clasp, opening to reveal a bevel-edged mirror, stamped '750', total diamond weight approximately 1.40 carats, length 17cm. £8,000–£12,000

Provenance: By family repute, purchased by the vendor's grandfather from Vacheron Constantin in the 1960s. According to a PMI test on the XRF analyzer, the bag is testing as 18ct gold.



430

A VICTORIAN BLACK LACQUERED PAPIER MACHÉ JEWEL CASKET BY JENNENS & BETTRIDGE, MID 19TH CENTURY, of rectangular form, the flared base on outswept bracket feet, the hinged cover decorated with trailing leaves and berries, tied with ribbon bows, and centred with the name 'ULRICA', the sides decorated with gilt scrolls, opening to reveal silk lined compartmented interior, with lift out tray, base with impressed maker's marks, *dimensions 37 x 31 x 6.5cm.* £200–£300

Provenance: Formerly the property of **Lady Ulrica Frederica Jane St Maur** (1833–1913), daughter of Edward Adolphus St Maur, 12th Duke of Somerset KG, PC, (1804–1885).

Lady Ulrica married Lord Henry Frederick Thynne (1832–1904), member of parliament and Treasurer of the Household to Queen Victoria.

Thence by family descent.





431

AN EARLY 19TH CENTURY GOLD FOB SEAL, the mount with C scrolls and a border of rosettes, the cut-cornered citrine intaglio engraved with demi-lion rampant crest above motto 'Intrepidus', fitted case retailed by Tessiers Ltd, height 40mm.

£2,000–£3,000



432

AN 18TH CENTURY DOUBLE-SIDED GLASS SEAL, (originally from a swivel fob seal), of oval moulded form, monogrammed to one side, and with coat of arms verso, length 23.5mm.

£60–£80

Provenance: The arms are those of **John Hogg** (1752–1815) of King's Lynn, Norfolk.

Son of George Hogg, a freeman of King's Lynn, and successful businessman in the shipping trade, John was almost certainly articulated to Philip Case (1712–1792), the most successful lawyer in King's Lynn in the 18th century, and adviser to Lord Charles Townshend. By the 1770s Hogg was practising as Case's junior partner in nearby Aylsham and serving as a local magistrate.

John never married but in his will left his extensive Norfolk and Cambridgeshire estates to be sold for the benefit of his 13 nieces and nephews.

The coat of arms depicts the 'Pelican in her Piety', a symbol of sacrifice, charity and Christ's self sacrifice. The Hogg family, with origins in Scotland, England and Ireland, adopted this symbol to represent these virtues.

Literature:

Aylsham Local History Society



433

FOUR JAPANESE SILVER PRESENTATION FOOTED DISHES, A GEORGE V SILVER SMALL MUG AND A SILVER MATCHBOX HOLDER, one dish engraved with facsimile signatures, another with presentation inscriptions dated 1925 and a pair dated 1936. (6) £240-£280



434

A PAIR OF VICTORIA SILVER SCALLOP BUTTER DISHES, each on three ball feet, by James Deakin & Sons, Sheffield 1894, diameter 10cm. £100-£150



435 Y

A VICTORIA SILVER PRESENTATION TROWEL, with mother-of-pearl handle, maker's mark 'T W', Birmingham 1899, in fitted case, length 16cm. £60-£80

Provenance: Engraved 'Presented to Rev. R W Hopewell, March 28th, 1900, Wesleyan Church, Thornton Heath'.

436

TWO ELIZABETH II SILVER WINE LABELS, of sporting interest and good gauge, one cast with an angler and a salmon (Brandy), the other with a sportsman, dog and pheasant (Port) by C.J. Vander, London 1969 and 1973, widths 5.3cm. (2)

£100-£150



437

A SET OF FOUR VICTORIA SILVER PUNCH TOTS, in the form of miniature porringers with half wrythen bodies, by Stephen Smith, London 1881, diameter 4cm.

£80-£120



438

AN ARTS AND CRAFTS SMALL SILVER BOWL, in the form of a large circular salt, with planished body, on dolphin feet, by Charles & George Asprey, London 1909, diameter 10cm.

£260-£320



439

A SILVER TABLE VESTA, of rectangular form, engine-turned with cast foliate borders, opening to reveal a hinged strike, inside lid engraved in script 'Bunsky', by Frederick Thomas Buckthorpe, London 1917, retailed by Asprey, length 5.8cm. **£150-£200**



440

A SILVER AESTHETIC MOVEMENT VESTA CASE BY SAMPSON MORDAN, engraved with scenes of a crane, bird and fish, with vacant circular cartouche, London 1884. with ring suspension loop, length 48mm. **£200-£300**



441

AN ITALIAN SILVER LIPSTICK HOLDER, engraved with foliate decoration and blue stone cabochon push button, with hinged interior mirror, stamped 'ITALY 800', length 5.6cm. **£80-£100**



442

REGIMENTAL INTEREST: A VICTORIAN SILVER-GILT PRESENTATION CIGAR CASE, the lid applied in high relief with a cavalryman at a gallop with sword drawn in attack, in a tree-scattered landscape with textured and engine turned ground, within a reserve decorated with military trophies, the sides and base engraved with scrolling foliage and centred with a crest, the interior bearing presentation inscription, by Charles Rawlings & William Summers, London, 1843, *dimensions 6.5 x 12cm.* **£500–£800**

Presentation inscription to inside lid reads: *'Presented to Hugh Guthrie, esq, M D, on his departure from the corps for his own dear land, by the officers of the 7th Reg Bengal Cavalry, in token of their esteem and regard, 1844'.*



443

A FRENCH 19TH CENTURY SILVER SNUFF BOX, of plain rectangular form with rounded corners, the lid engraved 'Lily Bellhavan & Stenton', with Baron's coronet above, the front engraved with cartouche, the gilt interior with strike to the inner lid, *length 7.3cm.* **£100–£150**

The Lordship of Belhaven & Stenton is a Lordship of Parliament in the peerage of Scotland. It was created in 1647 for Sir John Hamilton, 2nd Baronet, with remainder to his male heirs.

444

A SILVER CIGARETTE CASE, plain, of rectangular bowed form, with drop front panel revealing circular glazed locket compartment enclosing portrait of a young lady, by maker Deakin & Francis, number '15', Birmingham 1909, *length 8.2cm.* **£100–£150**



All lots are subject to extra charges which may be viewed in Ts and Cs 3, 4, 5 and 10 at the back of this catalogue.



445

A SET OF SIX GEORGE V SILVER-GILT COFFEE SPOONS, with wavy engine-turned decoration to the handles and backs of the bowls, by Adie Bros, Birmingham 1927, cased, retailed by Mappin & Webb, Queen Victoria Street, London E C., length 9cm.

£80–£100



446

A JAPANESE SILVER SMALL BOX AND COVER, rectangular, with re-entrant corners, having two small ring handles, the cover applied with a chrysanthemum mon and engraved with sun's rays, dimensions 4.5 x 5.5cm.

£120–£160

447

ANGLO - JAPANESE ALLIANCE (NICHU EI DOMEI): A SILVER RECTANGULAR SMALL BOX AND COVER, one side applied with enamelled British and Japanese flags joined by tassels, on applied tapering feet, the cover mounted with a samurai headdress, by D Kobayashi 4.5 x 6cm.

£140–£180

The British had a military alliance with the Japanese Empire, 1902–1923.





448

A CHINESE EXPORT SILVER MOUNTED HAND MIRROR, pierce-cast with conforming dragons, the handle in imitation of bamboo, .90 standard, retailed by Wang Hing, circa 1900, length 27.5cm. £150-£200



449

AN UNUSUAL TRIO OF VICTORIAN ELECTRO-PLATE SERVING SPOONS AND SIFTER SPOON, the spoon bowl relief decorated with billing exotic birds within borders of flowerheads and reeds, registration marks for May 1880, cased, spoon length 23cm. £80-£100



450

A VICTORIA SILVER SALVER AND MATCHING WAITER BY HUNT & ROSKILL (LATE STORR & MORTIMER), octafoil, with beaded border, engraved with strapwork amidst scrolling foliage and each centred with a crest and on four voluted feet, maker's marks, London 1868, both numbered, diameters 35.5 and 17cm. (2) **£1,400–£1,800**

451

ROYAL NEW BRUNSWICK RIFLE ASSOCIATION
THE PRINCE OF WALES CHALLENGE CUP: A VICTORIA SILVER TROPHY CUP AND COVER, the elaborate design incorporating repoussé scrollwork on a pounced ground, twin handles supporting a projecting girdle and a double knob stem, with two reserves engraved with the arms of the Prince of Wales and the University of Cambridge, the cover with a finial modelled as a kneeling rifleman taking aim, the border engraved 'F T Piggott, winner of H R H the Prince of Wales challenge Cup, MDCCCLXXVI', by Edward Charles Brown, London 1868, height 29cm. **£500–£800**

This award, dating from 1860 when the Prince of Wales (the future King Edward VII) travelled to New Brunswick to present a trophy to encourage marksmanship in the militia, is still awarded, and has been continuously since that time.





452

A SILVER SNAIL POMANDER, PROBABLY GERMAN 17TH CENTURY, the head emerging from its shell, one side pierced and opening to enclose an aromatic sponge, the other side with spiral detail, enclosing a gilt interior divided into four subdivisions for spices, engraved 'Schlag', 'Canel', 'Rosen' and 'Neigel', the two halves held together with a spring release fastener, beneath ropetwist-edged suspension ring, assay scrape mark to the interior; overall length 48mm. £2,000–£3,000

The term 'pomander' derives from the French term 'pomme d'ambre' (apple of amber), the use of a small receptacle for containing scents originating in the Orient from ancient times.

In the Medieval period, it was common practice to wear pomanders in small containers, worn as jewels around the neck suspended from a chain, or attached to a belt or girdle. The strong scents were believed to have protective properties to ward off plaques and air borne diseases, hence the pomander had a dual purpose - as a scent emanator and an amulet against evils. Spices and perfumes such as cinnamon, musk, rosewater, cloves, laudanum and sandalwood might be used.

The spherical form was the most common shape for pomanders, with compartments similar to orange segments. A snail-shaped pomander is unusual, but the mollusk was used in German mannerist ornament by influential designers including Virgil Solis, one of 16th century Germany's most prolific printmakers, engravers and book illustrators.

The use of the snail form for pomanders had its own symbolism: "*the ability of the snail to withdraw into its protective shell at times of danger or hardship has resulted in its becoming the symbol of spring and resurrection*". (Launet)

Literature/Sources:

See engraving by Virgin Solis: Pitcher in the form of a snail, circa 1550; held at the V & A: Accession Number E.2872-1910.

Three similar snail pomanders are held at the V & A, catalogued as 'scent cases'.
Accession Numbers: M.805-1926, M.806-1926 and M.128-1929.

A similar gold example is held at The Hunt Museum, Limerick: Accession Number MG087.

A further example can be found in the Schwarzkopft Collection:

See Launet, E: *Perfume and Pomanders: Scent and Scent Bottles Through the Ages*, pub. Potterton Books, 1999, page 22, illustration plate 66.



453 Y

A GEORGE II GOLD RATTLE BY SANDILANDS DRINKWATER, CIRCA 1745, incorporating whistle and 'Corallium Rubrum' coral teething bar, chased and repoussé decorated throughout with rococo bird, C scrolls and flowerheads, supporting two tiers of four bells, the first tier suspended from the chamfered knob, the second tier mounted on double scroll supports, the mouthpiece with maker's mark and further engraved with four sets of initials, with applied ring attachment to mouthpiece, *length excluding coral teething bar 10cm, total length 14.3cm.* £5,000–£7,000

Provenance: The four sets of initials are assumed to be those of subsequent generations of owners.

This example is very similar to the rattle offered at Noonans on 17 June 2025, Lot 459.

Grimwade references this hallmark as 'probably his new style mark of 1739', required under the 1738 Plate Act. See ref: 3792.



454 Y

A GEORGE III SILVER GILT RATTLE BY CHARLES RAWLINGS, 1817, incorporating whistle and 'Corallium Rubrum' coral teething bar, repoussé decorated and chased throughout with sea shells, flowerheads and stiff acanthus leaves, supporting two tiers of four bells, each bell suspended from a serpent's head, with maker's mark 'CR' to the mouthpiece, London hallmark to the collar, with applied ring attachment to mouthpiece, length excluding coral teething bar 9.5cm, total length 15cm.

£700–£900



455 Y

A VICTORIA SILVER AND TORTOISESHELL CARD TRAY BY WILLIAM COMYNS, of rectangular form with cut corners, the tortoiseshell panel edged with a pierced work rim of scrolls, flowers and foliage, putti and mythological creatures, raised on four feet, London 1888, maker's mark, dimensions 18.5 x 13cm.

£240–£280



456

A RUSSIAN SILVER GILT CLOISSONNÉ ENAMEL POT AND COVER, EARLY 20TH CENTURY, ovoid form with pull off cover, decorated throughout with applied wirework and scrolling foliage and flowers, with polychrome graded enamels, the cover edged with blue enamel borders, against a stippled ground, by Nicholai Zugeryer, Moscow, height 8cm.

£600–£800

Nicholai Zugeryer's workshop was active between 1908–1917.

End of Sale

INDEX OF MAKERS

BECK & BLYTH	179	GUCCI	238
ALABASTER & WILSON	263	HUNT & ROSKELL	450
D. ARNAUD À MORGES	352	INTERNATIONAL WATCH CO.	391, 404, 412
BAUME & MERCIER	393	JAEGER-LECOULTRE	385, 396, 409
BOODLES	152, 309–310, 313	LE ROI A PARIS	350
BOUCHERON	306	LONGINES	358, 394
BUCHERER	58, 213, 225	H.G. MAUTNER	177
BUECHE-GIROD	403	DAVID MORRIS	23, 181, 270
BULGARI	400	OMEGA	185, 387, 395, 405, 419
CARTIER	236, 239, 287–290, 340, 408	MOSHE OVED	73
CHANEL	153, 397	GILIAN PACKARD	170–173
CHOPARD	61, 63	PATEK PHILIPPE	379, 380, 410, 413
T.F. COOPER	342	POMELLATO	227
DE VROOMEN	180	BEN ROSENFELD	168–169
A. DEMEUR	348	ROLEX	381–382, 384, 386, 388, 390, 392, 399, 401
E.J. DENT	369	T.R. RUSSELL	376
STUART DEVLIN	178	SAMPSON MORDAN	440
DEAKIN & FRANCIS	143	TIFFANY & CO. LTD	94, 96–97
JOHN DONALD	167	DAVID THOMAS	176
SANDILANDS DRINKWATER	453	TUDOR	383
ROGER DUNSTER	341	UNOAERRE	160, 198
GEORG JENSEN	75–80	VAN CLEEF & ARPELS	301, 302
GARRARD & CO.	186	WASELL & HALFORD	377
ALAN MARTIN GARD	174–175	WEMPE	211, 218, 254, 314–317
MICHAEL GOSSCHALK	165, 166	S. WILLIAMS DUBOIS	356
ANDREW GRIMA	161–164		

DIAMONDS

DIAMONDS ARE ASSESSED ACCORDING TO THE FOUR C'S

1. CARAT WEIGHT

1 Carat equals 0.2 Grams.

2. CUT

The quality of a cut is assessed in terms of its proportions, symmetry & polish.

3. COLOUR

Unless regarded as a 'fancy' coloured diamond, all diamonds are graded on their lack of colour.

4. CLARITY

Diamonds are graded on their freedom from inclusions (within the stone) & blemishes (found on the surface of the stone). They are assessed using 10x magnification.

Please note the four cs of a diamond cannot be fully assessed whilst the stone is mounted. The approximate gradings provided in the condition reports are estimations, made by the specialists whilst the stones were mounted & are for guidance only. If a stone has been unmounted & assessed in a gemmological laboratory, this will be noted in the cataloguing/condition report.

COLOUR GRADES

GIA	CIBJO	TRADITIONAL
D	Exceptional White + (EW+)	Finest White
E	Exceptional White (EW)	Finest White
F	Rare White + (RW+)	Fine White
G	Rare White (RW)	Fine White
H	White (W)	White
I	Slightly Tinted White (STW)	Commercial White
J	Slightly Tinted White (STW)	Top Silver Cape
K	Tinted White (TW)	Top Silver Cape
L	Tinted White (TW)	Silver Cape
M-Z	Tinted Colour (TC)	Cape
Fancy	Fancy Colour	

CLARITY GRADES

GIA	CIBJO	DESCRIPTION
Flawless (FL)	Loupe Clean (LC)	Shows no inclusions or blemishes
Internally Flawless (IF)	Loupe Clean (LC)	Shows no inclusions & only insignificant blemishes
Very Very Slightly Included (VVS1/2)	Very Very Slightly Included (VVS1-2)	Contains minute inclusions which are very difficult for an experienced grader to see with 10x magnification
Very Slightly Included (VS1-2)	Very Slightly Included (VS1-2)	Contains very small inclusions that are difficult to see with 10x magnification
Slightly Included (SI1-2)	Slightly Included (SI1-2)	Contains inclusions that are easily visible with 10x magnification
Imperfect/Included (I1-3)	Pique (P1-3)	Contains inclusions that are obvious with 10x magnification & can often be seen with the naked eye; durability may be affected



COMMISSION FORM

JEWELLERY, WATCHES, SILVER & OBJECTS OF VERTU
16 SEPTEMBER 2025

Please bid on my behalf at the above sale for the following Lot(s) up to the price(s) mentioned overleaf. These bids are to be executed as cheaply as is permitted by other bids or any reserve.

I understand that in the case of a successful bid, a premium of 24 per cent (plus VAT if delivered or collected within the UK) will be payable by me on the hammer price of all lots.

Please see the Terms and Conditions of Business for any other charges which may be applicable.

Please ensure your bids comply with the steps outlined below:

Up to £100 by £5
£100 to £200 by £10
£200 to £500 by £20
£500 to £1,000 by £50
£1,000 to £2,000 by £100
£2,000 to £5,000 by £200
£5,000 to £10,000 by £500
£10,000 to £20,000 by £1,000
£20,000 to £50,000 by £2,000

Bids of unusual amounts **will be rounded down** to the bid step below and will **not** take precedence over a similar bid unless received first.

NOTE:

All bids placed other than via our website should be received by 4 PM on the day prior to the sale. Although we will endeavour to execute any late bids, Noonans cannot accept responsibility for bids received after that time. It is strongly advised that you use our online Advance Bidding Facility. If you have a valid email address bids may be entered, and amended or cancelled, online at www.noonans.co.uk right up until a lot is offered. You will receive a confirmatory email for all bids and amendments, Bids posted to our office using this form will be entered by our staff using the same Advance Bidding Facility. **There is, therefore, no better way of ensuring the accuracy of your advance bids than to place them yourself online.**

I confirm that I have read and agree to abide by the Terms and Conditions of Business in the catalogue.

SIGNED

NAME (block capitals)

CLIENT CODE

ADDRESS

TELEPHONE

EMAIL

If successful, payment can be made in the following ways:

Credit/Debit card online via www.noonans.co.uk

Bank Transfer

Bankers: Lloyds; Piccadilly, London; Sort code: 30-96-64; Account No.: 00622865;
Swift Code: LOYDGB2L; IBAN: GB70LOYD30966400622865; BIC: LOYDGB21085

Cheque payable to Noonans

Cash up to a maximum of £5,000

All payments to be made in pounds sterling.

Please note payment is due within five working days of the end of the auction.

YOUR BIDS MAY BE PLACED OVERLEAF



COMMISSION FORM

JEWELLERY, WATCHES, SILVER & OBJECTS OF VERTU
16 SEPTEMBER 2025

If you wish to place a 'plus one' bid, please write '+1' next to the relevant bid

Table with 6 columns: LOT NO., £ BID, LOT NO., £ BID, LOT NO., £ BID. Multiple rows for bid entry.

SALEROOM NOTICES:

Any Saleroom Notices relevant to this auction are automatically posted on the Lot Description pages on our website. Prospective buyers are strongly advised to consult the site for updates.

SUCCESSFUL BIDS

Should you be a successful bidder you will receive an invoice detailing your purchases. All purchases are sent by registered post unless otherwise instructed, for which a minimum charge of £12.00 (plus VAT if resident in the UK) will be added to your invoice. All payments for purchases must be made in pounds sterling. Please check your bids carefully.

PRICES REALISED

The hammer prices bid at the auction are posted on the Internet at www.noonans.co.uk in real time. A full list of prices realised appear on our website as the auction progresses. Telephone enquiries are welcome from 9 AM the following day.

CONDITIONS MAINLY CONCERNING BUYERS

1 The buyer

The highest bidder shall be the buyer at the 'hammer price' and any dispute shall be settled at the auctioneer's absolute discretion. Every bidder shall be deemed to act as principal unless there is in force a written acknowledgement by Noonans Mayfair Ltd. ("Noonans") that he acts as agent on behalf of a named principal. Bids will be executed in the order that they are received.

2 Minimum increment

The auctioneer shall have the right to refuse any bid which does not conform to Noonans' published bidding increments which may be found at noonans.co.uk and in the bidding form included with the auction catalogue.

3 The premium

The buyer shall pay to Noonans a premium of 24% on the 'hammer price' and agrees that Noonans, when acting as agent for the seller, may also receive commission from the seller in accordance with Condition 16.

4 Value Added Tax (VAT)

The buyers' premium is subject to the current rate of Value Added Tax if the lot is delivered to or collected by the purchaser within the UK.

Lots marked 'X' are subject to importation VAT of 5% on the hammer price unless re-exported outside the UK, as per the conditions below.

Buyers who wish to hand carry their lots to export them from the UK will be charged VAT at the prevailing rate and importation VAT (where applicable) and will not be able to claim a VAT refund.

Buyers will only be able to secure a VAT free invoice and/or VAT refund if the goods are exported by Noonans or a pre-approved commercial shipper. Where the buyer instructs a pre-approved commercial shipper, proof of correct export out of the UK must be provided to Noonans by the buyer within 30 days of export and no later than 90 days from the date of the sale. Refunds are subject to a £50 administrative fee.

Lots marked '††' are subject to the Standard Rate of VAT, currently 20%, on both the hammer price and buyers' premium.

VAT can only be removed from the hammer price, if goods are exported by Noonans or a pre-approved commercial shipper as per above.

All lots will be subject to VAT on the buyers' premium regardless of whether the lot is exported.

5. Artist's Resale Rights (Droit de Suite)

Lots marked ARR in the catalogue indicate lots that may be subject to this royalty payment.

The royalty will be charged to the buyer on the 'hammer price' and is in addition to the buyers' premium. Royalties are charged on a sliding percentage scale as shown below but do not apply to lots where the hammer price is less than 1000 pounds sterling. All royalty charges are paid in full to The Design and Artists Copyright Society (DACS).

Portion of the hammer price	Royalties
From 0 to £50,000	4%
From £50,000.01 to £200,000	3%
From £200,000.01 to £350,000	1%
From £350,000.01 to £500,000	0.5%
Exceeding £500,000	0.25%

VAT does not apply to the Artist's Resale Rights.

6 Payment

When a lot is sold the buyer shall:

- (a) confirm to Noonans his or her name and address and, if so requested, give proof of identity; and
- (b) pay to Noonans the 'total amount due' in pounds sterling within five working days of the end of the sale (unless credit terms have been agreed with Noonans before the auction). Please note that we will not accept cash payments in excess of £5,000 (five thousand pounds) in settlement for purchases made at any one auction.

7 Noonans may, at its absolute discretion, agree credit terms with the buyer before an auction under which the buyer will be entitled to take possession of lots purchased up to an agreed amount in value in advance of payment by a determined future date of the 'total amount due'.

8 Any payments by a buyer to Noonans may be applied by Noonans towards any sums owing from that buyer to Noonans on any account whatever, without regard to any directions of the buyer, his or her agent, whether expressed or implied.

9 Collection of purchases

The ownership of the lot(s) purchased shall not pass to the buyer until he or she has made payment in full to Noonans of the 'total amount due' in pounds sterling.

10 (a) The buyer shall at his or her own expense take away the lot(s) purchased not later than 5 working days after the day of the auction but (unless credit terms have been agreed in accordance with Condition 7) not before payment to Noonans of the 'total amount due'.

(b) The buyer shall be responsible for any removal, storage and insurance charges on any lot not taken away within 5 working days after the day of the auction.

(c) The packing and handling of purchased lots by Noonans staff is undertaken solely as a courtesy to clients and, in the case of fragile articles, will be undertaken only at Noonans' discretion. In no event will Noonans be liable for damage to glass or frames, regardless of the cause. Bulky lots or sharp implements, etc., may not be suitable for in-house shipping.

11 Buyers' responsibilities for lots purchased

The buyer will be responsible for loss or damage to lots purchased from the time of collection or the expiry of 5 working days after the day of the auction, whichever is the sooner. Neither Noonans nor its servants or agents shall thereafter be responsible for any loss or damage of any kind, whether caused by negligence or otherwise, while any lot is in its custody or under its control.

Loss and damage warranty cover at the rate of 1.5% will be applied to any lots despatched by Noonans to destinations outside the UK, unless specifically instructed otherwise by the consignee.

12 Remedies for non-payment or failure to collect purchase

If any lot is not paid for in full and taken away in accordance with Conditions 6 and 10, or if there is any other breach of either of those Conditions, Noonans as agent of the seller shall, at its absolute discretion and without prejudice to any other rights it may have, be entitled to exercise one or

more of the following rights and remedies:

- (a) to proceed against the buyer for damages for breach of contract.
- (b) to rescind the sale of that or any other lots sold to the defaulting buyer at the same or any other auction.
- (c) to re-sell the lot or cause it to be re-sold by public auction or private sale and the defaulting buyer shall pay to Noonans any resulting deficiency in the 'total amount due' (after deduction of any part payment and addition of re-sale costs) and any surplus shall belong to the seller.
- (d) to remove, store and insure the lot at the expense of the defaulting buyer and, in the case of storage, either at Noonans' premises or elsewhere.
- (e) to charge interest at a rate not exceeding 2 percent per month on the 'total amount due' to the extent it remains unpaid for more than 5 working days after the day of the auction.
- (f) to retain that or any other lot sold to the same buyer at the sale or any other auction and release it only after payment of the 'total amount due'.
- (g) to reject or ignore any bids made by or on behalf of the defaulting buyer at any future auctions or obtaining a deposit before accepting any bids in future.
- (h) to apply any proceeds of sale then due or at any time thereafter becoming due to the defaulting buyer towards settlement of the 'total amount due' and to exercise a lien on any property of the defaulting buyer which is in Noonans' possession for any purpose.

13 Liability of Noonans and sellers

(a) Goods auctioned are usually of some age. All goods are sold with all faults and imperfections and errors of description. Illustrations in catalogues are for identification only. Buyers should satisfy themselves prior to the sale as to the condition of each lot and should exercise and rely on their own judgement as to whether the lot accords with its description. Subject to the obligations accepted by Noonans under this Condition, none of the seller, Noonans, its servants or agents is responsible for errors of descriptions or for the genuineness or authenticity of any lot. No warranty whatever is given by Noonans, its servants or agents, or any seller to any buyer in respect of any lot and any express or implied conditions or warranties are hereby excluded.

(b) Any lot which proves to be a 'deliberate forgery' may be returned by the buyer to Noonans within 15 days of the date of the auction in the same condition in which it was at the time of the auction, accompanied by a statement of defects, the number of the lot, and the date of the auction at which it was purchased. If Noonans is satisfied that the item is a 'deliberate forgery' and that the buyer has and is able to transfer a good and marketable title to the lot free from any third party claims, the sale will be set aside and any amount paid in respect of the lot will be refunded, provided that the buyer shall have no rights under this Condition if:

- (i) the description in the catalogue at the date of the sale was in accordance with the then generally accepted opinion of scholars and experts or fairly indicated that there was a conflict of such opinion; or
- (ii) the only method of establishing at the date of publication of the catalogue that the lot was a

'deliberate forgery' was by means of scientific processes not generally accepted for use until after publication of the catalogue or a process which was unreasonably expensive or impractical.

(c) A buyer's claim under this Condition shall be limited to any amount paid in respect of the lot and shall not extend to any loss or damage suffered or expense incurred by him or her.

(d) The benefit of the Condition shall not be assignable and shall rest solely and exclusively in the buyer who, for the purpose of this condition, shall be and only be the person to whom the original invoice is made out by Noonans in respect of the lot sold.

CONDITIONS MAINLY CONCERNING SELLERS AND CONSIGNORS

14 Warranty of title and availability

The seller warrants to Noonans and to the buyer that he or she is the true owner of the property or is properly authorised to sell the property by the true owner and is able to transfer good and marketable title to the property free from any third party claims. The seller will indemnify Noonans, its servants and agents and the buyer against any loss or damage suffered by either in consequence of any breach on the part of the seller.

15 Reserves

The seller shall be entitled to place, prior to the first day of the auction, a reserve at or below the low estimate on any lot provided that the low estimate is more than £100. Such reserve being the minimum 'hammer price' at which that lot may be treated as sold. A reserve once placed by the seller shall not be changed without the consent of Noonans. Noonans may at their option sell at a 'hammer price' below the reserve but in any such cases the sale proceeds to which the seller is entitled shall be the same as they would have been had the sale been at the reserve. Where a reserve has been placed, only the auctioneer may bid on behalf of the seller.

16 Authority to deduct commission and expenses

The seller authorises Noonans to deduct commission at the 'stated rate' and 'expenses' from the 'hammer price' and acknowledges Noonans' right to retain the premium payable by the buyer.

17 Rescission of sale

If before Noonans remit the 'sale proceeds' to the seller, the buyer makes a claim to rescind the sale that is appropriate and Noonans is of the opinion that the claim is justified, Noonans is authorised to rescind the sale and refund to the buyer any amount paid to Noonans in respect of the lot.

18 Payment of sale proceeds

Noonans shall remit the 'sale proceeds' to the seller 35 days after the auction, but if by that date Noonans has not received the 'total amount due' from the buyer then Noonans will remit the sale proceeds within five working days after the date on which the 'total amount due' is received from the buyer. If credit terms have been agreed between Noonans and the buyer, Noonans shall remit to the seller the sale proceeds 35 days after the auction unless otherwise agreed by the seller.

19 If the buyer fails to pay to Noonans the 'total amount due' within 35 days after the auction, Noonans will endeavour to notify the seller and take the seller's instructions as to the appropriate course of action and, so far as in Noonans' opinion is practicable, will assist the seller to recover the

'total amount due' from the buyer. If circumstances do not permit Noonans to take instructions from the seller, the seller authorises Noonans at the seller's expense to agree special terms for payment of the 'total amount due', to remove, store and insure the lot sold, to settle claims made by or against the buyer on such terms as Noonans shall in its absolute discretion think fit, to take such steps as are necessary to collect monies due by the buyer to the seller and if necessary to rescind the sale and refund money to the buyer if appropriate.

20 If, notwithstanding that, the buyer fails to pay to Noonans the 'total amount due' within 35 days after the auction and Noonans remits the 'sale proceeds' to the seller, the ownership of the lot shall pass to Noonans.

21 Charges for withdrawn lots

Where a seller cancels instructions for sale, Noonans reserve the right to charge a fee of 15% of Noonans' then latest middle estimate of the auction price of the property withdrawn, together with Value Added Tax thereon if the seller is resident in the UK, and 'expenses' incurred in relation to the property.

22 Rights to photographs and illustrations

The seller gives Noonans full and absolute right to photograph and illustrate any lot placed in its hands for sale and to use such photographs and illustrations and any photographs and illustrations provided by the seller at any time at its absolute discretion (whether or not in connection with the auction).

23 Unsold lots

Where any lot fails to sell, Noonans shall notify the seller accordingly. The seller shall make arrangements either to re-offer the lot for sale or to collect the lot.

24 Noonans reserve the right to charge commission up to one-half of the 'stated rates' calculated on the 'bought-in price' and in addition 'expenses' in respect of any unsold lots.

GENERAL CONDITIONS AND DEFINITIONS

25 Noonans sells as agent for the seller (except where it is stated wholly or partly to own any lot as principal) and as such is not responsible for any default by seller or buyer.

26 Any representation or statement by Noonans, in any catalogue as to authorship, attribution, genuineness, origin, date, age, provenance, condition or estimated selling price is a statement of opinion only. Every person interested should exercise and rely on his or her own judgement as to such matters and neither Noonans nor its servants or agents are responsible for the correctness of such opinions.

27 Whilst the interests of prospective buyers are best served by attendance at the auction, Noonans will, if so instructed, execute bids on their behalf. Neither Noonans nor its servants or agents are responsible for any neglect or default in doing so or for failing to do so.

28 Noonans shall have the right, at its discretion, to refuse admission to its premises or attendance at its auctions by any person.

29 Noonans has absolute discretion without giving any reason to refuse any bid, to divide any lot, to combine any two or more lots, to withdraw any lot from the auction and in case of dispute to put

up any lot for auction again.

30 (a) Any indemnity under these Conditions shall extend to all actions, proceedings costs, expenses, claims and demands whatever incurred or suffered by the person entitled to the benefit of the indemnity.

(b) Noonans declares itself to be a trustee for its relevant servants and agents of the benefit of every indemnity under these Conditions to the extent that such indemnity is expressed to be for the benefit of its servants and agents.

31 Any notice by Noonans to a seller, consignor, prospective bidder or buyer may be given by first class mail, airmail or email and if so given shall be deemed to have been duly received by the addressee within 48 hours.

32 These Conditions shall be governed by and construed in accordance with English law. All transactions to which these Conditions apply and all matters connected therewith shall also be governed by English law. Noonans hereby submits to the exclusive jurisdiction of the English courts and all other parties concerned hereby submit to the non-exclusive jurisdiction of the English courts.

33 In these Conditions:

(a) 'catalogue' includes any advertisement, brochure, estimate, price list or other publication;

(b) 'hammer price' means the price at which a lot is knocked down by the auctioneer to the buyer;

(c) 'total amount due' means the 'hammer price' in respect of the lot sold together with any premium, Value Added Tax chargeable and additional charges and expenses due from a defaulting buyer in pounds sterling;

(d) 'deliberate forgery' means an imitation made with the intention of deceiving as to authorship, origin, date, age, period, culture or source which is not shown to be such in the description in the catalogue and which at the date of the sale had a value materially less than it would have had if it had been in accordance with that description;

(e) 'sale proceeds' means the net amount due to the seller being the 'hammer price' of the lot sold less commission at the 'stated rates' and 'expenses' and any other amounts due to Noonans by the seller in whatever capacity and howsoever arising;

(f) 'stated rate' means Noonans' published rates of commission for the time and any Value Added Tax thereon;

(g) 'expenses' in relation to the sale of any lot means Noonans charges and expenses for insurance, illustrations, special advertising, certification, remedials, packing and freight of that lot and any Value Added Tax thereon;

(h) 'bought-in price' means 5 per cent more than the highest bid received below the reserve.

34 Vendors' commission of sales

A commission of 15% is payable by the vendor on the hammer price on lots sold.

Insurance is charged at 1.5% of the hammer price.

35 VAT

Commission, illustrations, insurance and expenses are subject to VAT if the seller is resident in the UK.

AT NOONANS OUR EXPERTISE EXTENDS BEYOND THE KNOWLEDGE WITHIN OUR SPECIALIST DEPARTMENTS TO INCLUDE ALL ASPECTS OF OUR AUCTION HOUSE, FROM OUR PHOTOGRAPHY STUDIO TO OUR ADVANCED PROPRIETARY ONLINE BIDDING SYSTEM.

We're a close-knit team of experts with deep knowledge across our specialist subjects: banknotes, coins, detectorist finds, historical & art medals, jewellery, medals & militaria, objects of vertu, silver, tokens and watches. Focusing on these fascinating items, we share this expertise with an international community of sellers and buyers.

Each sale item that passes through our Mayfair auction house is appraised by an expert recognised as a leading authority in a particular field of interest, ranging from ancient coins and military medals to jewellery and vintage watches. This depth of knowledge across all departments sets us apart from other generalist auctioneers.

SELL WITH US

Respected worldwide for the breadth and depth of our specialist expertise, we can connect you to a broad, deep pool of potential buyers. Over the years, we've brought together an international community of people who share our particular passion. As recognised experts, with a vast store of freely available in-house knowledge and experience, we've earned the trust of buyers across the globe.

Our fees are transparent. Unlike many other auction houses, we don't charge for collecting your lots, photography or marketing and there's no minimum lot charge.

Not surprisingly, our position as a trusted authority, with deep global reach, often leads to the achievement of higher than expected prices at auction.

Free valuation

If you're interested in selling your items and you'd like a free auction valuation, without obligation, our specialists will be happy to help. You can submit online or bring your sale item to a valuation day at our Mayfair auction house or at a regional venue. Alternatively, request a home visit.

BUY WITH US

We're here for you, whether you're an experienced collector with a depth of knowledge or an occasional buyer attracted to a particular piece of jewellery or vintage watch.

Be assured that the item in question has been accurately described and photographed, detailing all available information, from its provenance to its current condition. Be certain that our price estimate is fair and sensible.

Delve deep into our website and you'll discover a vast store of helpful background data, including prices achieved for similar items at previous auctions. Informed and empowered, study our detailed online catalogue, then place your bid in complete confidence.

NOONANS
MAYFAIR

