

NOONANS  
MAY FAIRS

JEWELLERY, WATCHES, SILVER & OBJECTS OF VERTU

25 NOVEMBER 2025 AT 12 NOON



FEATURED ABOVE

LOT 262

THE YORK ROSE BROOCH  
A ROYAL PRESENTATION  
FROSTED ROCK CRYSTAL  
AND DIAMOND BROOCH  
BY GARRARD & CO.  
CIRCA 1923

BACK COVER

LOT 390

A RARE WHITE  
GOLD AUTOMATIC  
CHRONOGRAPH  
WRISTWATCH WITH  
BRACELET, DAYTONA  
'PANDA DIAL' BY ROLEX  
CIRCA 2009

## AUCTION

**AN AUCTION OF:**  
JEWELLERY, WATCHES, SILVER & OBJECTS OF VERTU

**DATE:**  
25 NOVEMBER 2025 AT 12 NOON

## CONTACTS

**GENERAL AUCTION ENQUIRIES**  
AUCTIONS@NOONANS.CO.UK

**JEWELLERY & WATCH ENQUIRIES**  
JEWELLERY@NOONANS.CO.UK

**ACCOUNT ENQUIRIES**  
ACCOUNTS@NOONANS.CO.UK

**SHIPPING ENQUIRIES**  
SHIPPING@NOONANS.CO.UK

## BANK DETAILS

**BANKERS:** LLOYDS  
**ADDRESS:** PICCADILLY, LONDON  
**SORT CODE:** 30-96-64  
**ACCOUNT NO.:** 00622865  
**SWIFT CODE:** LOYDGB2L  
**IBAN:** GB70LOYD30966400622865  
**BIC:** LOYDGB21085

## BOARD OF DIRECTORS

**PIERCE NOONAN**  
CHAIRMAN AND CEO

**NIMROD DIX**  
DEPUTY CHAIRMAN

**ROBIN GREVILLE**  
CHIEF OPERATING OFFICER

**CHRISTOPHER WEBB**  
CLIENT LIAISON DIRECTOR (NUMISMATICS)

## AUCTION AND CLIENT SERVICES

**PHILIPPA HEALY**  
ADMINISTRATION DIRECTOR  
(ASSOCIATE DIRECTOR)  
PHILIPPA@NOONANS.CO.UK  
T. 020 7016 1775

**ANNA HOPPER**  
SENIOR ADMINISTRATOR  
ANNA@NOONANS.CO.UK  
T. 020 7016 1700

**SOFIA BUSACCA**  
ADMINISTRATOR  
SOFIA@NOONANS.CO.UK  
T. 020 7016 1700

**LOUIS OCONNOR**  
ADMINISTRATOR  
LOUIS@NOONANS.CO.UK  
T. 020 7016 1700

**CHRISTOPHER MELLOR-HILL**  
HEAD OF CLIENT LIAISON (ASSOCIATE DIRECTOR)  
CHRISTOPHER@NOONANS.CO.UK  
T. 020 7016 1771

**JAMES CARVER**  
CLIENT LIAISON  
JBC@NOONANS.CO.UK  
T. 020 7016 1770

**CHRIS FINCH HATTON**  
CLIENT LIAISON  
FINCH@NOONANS.CO.UK  
T. 020 7016 1754

**JAMES KING**  
SALEROOM AND FACILITIES MANAGER  
JAMES@NOONANS.CO.UK  
T. 020 7016 1755

**IAN ANDERSON**  
CHIEF TECHNOLOGY OFFICER  
(ASSOCIATE DIRECTOR)  
IAN@NOONANS.CO.UK  
T. 020 7016 1751

## JEWELLERY SPECIALISTS

**FRANCES NOBLE FGA DGA**  
HEAD OF JEWELLERY DEPARTMENT  
(ASSOCIATE DIRECTOR)  
FRANCES@NOONANS.CO.UK  
T. 020 7016 1781

**RACHEL BAILEY FGA DGA**  
JEWELLERY SPECIALIST  
RACHEL@NOONANS.CO.UK  
T. 020 7016 1784

**LAURA SMITH FGA DGA**  
JEWELLERY SPECIALIST  
LAURA@NOONANS.CO.UK  
T. 020 7016 1782

## WATCH SPECIALIST

**JOANNE LEWIS**  
WATCH SPECIALIST  
JOANNE@NOONANS.CO.UK  
T. 020 7016 1785

## OBJECTS OF VERTU SPECIALIST

**MICHAEL WELCH**  
SPECIALIST  
MICHAEL@NOONANS.CO.UK  
T. 020 7016 1700



## ORDER OF SALE

# JEWELLERY, WATCHES, SILVER & OBJECTS OF VERTU

TUESDAY 25 NOVEMBER AT 12 NOON

JEWELLERY	1–349
WATCHES	350–412
SILVER & OBJECTS OF VERTU	413–466

### VIEWING

MONDAY 17 NOVEMBER **TRADE VIEWING BY APPOINTMENT ONLY** 10 AM–4.30 PM

THURSDAY 20 NOVEMBER 10 AM–4.30 PM

FRIDAY 21 NOVEMBER 10 AM–4.30 PM

SUNDAY 23 NOVEMBER 12 NOON–4 PM

MONDAY 24 NOVEMBER 10 AM–4.30 PM

NO VIEWING ON SALE DAY

ALL LOTS ARE AVAILABLE TO VIEW ONLINE WITH FULL ILLUSTRATIONS  
AND CONDITION REPORTS AT [WWW.NOONANS.CO.UK](http://WWW.NOONANS.CO.UK)

## NOVEMBER TO DECEMBER VALUATION DAYS

PLEASE CALL 020 7016 1700 OR EMAIL [JEWELLERY@NOONANS.CO.UK](mailto:JEWELLERY@NOONANS.CO.UK) FOR AN APPOINTMENT

### BATH

6 NOVEMBER 10 AM–3 PM  
LANSDOWN GROVE HOTEL  
LANSDOWN ROAD, SOMERSET, BA1 5EL

### BERKHAMSTED

13 NOVEMBER & 11 DECEMBER  
10 AM–2 PM  
TOWN HALL, 196 HIGH STREET,  
BERKHAMSTED, HP4 3AP

### BLACKHEATH

12 NOVEMBER & 10 DECEMBER  
THE CONSERVATOIRE  
19–21 LEE ROAD, LONDON, SE3 9RQ

### CANTERBURY

11 NOVEMBER 11 AM–4 PM  
ADOBE HOTEL  
30–33 HIGH STREET, CT1 2RX

### HAMPSTEAD

7 NOVEMBER & 3 DECEMBER  
11 AM–4 PM  
BURGH HOUSE  
NEW END SQUARE, LONDON, NW3 1LT

### MARLOW

4 NOVEMBER & 2 DECEMBER  
10 AM–3 PM  
DANESFIELD HOUSE HOTEL  
HENLEY ROAD, MEDMENHAM  
BUCKINGHAMSHIRE, SL7 2EY

### NORWICH

8 DECEMBER 11 AM–4 PM  
MAIDS HEAD HOTEL  
20 TOMBLAND, NORFOLK, NR3 1LB

### PETERSFIELD

4 DECEMBER 10 AM–3 PM  
SKY PARK FARM, HAMPSHIRE, GU31 5PT

### RICHMOND-ON-THAMES

6 NOVEMBER 10 AM–3 PM  
RICHMOND HILL HOTEL, 144–150  
RICHMOND HILL, SURREY TW10 6RW

### SHAFTESBURY

7 NOVEMBER & 12 DECEMBER  
10 AM–3 PM  
GROSVENOR ARMS HOTEL  
HIGH STREET, DORSET, SP7 8JA

### WAREHAM

5 NOVEMBER 10 AM–2 PM  
THE PRIORY HOTEL  
CHURCH GREEN, DORSET, BH20 4ND

## SUMMARY OF INFORMATION FOR BUYERS

### REGISTERING TO BID

New clients must register online to bid (whether in person or in absentia). This can be done via our website [www.noonans.co.uk](http://www.noonans.co.uk)

Registrations will be subject to due diligence and Noonans reserves the right to cancel registrations.

Once registered, any client bidding for the first time online will need to enter their card details so that a security check can be performed to authorise you to bid ([www.noonans.co.uk](http://www.noonans.co.uk) >Your Account > Account Authorisation). This check is secure, your card details are not seen by us and no funds will be deducted.

### BIDDING PRIORITY

Please note that we prioritise executing commission bids as early as possible in order to secure the lot for you at the cheapest possible price. It is therefore entirely possible that a lot can sell at your top bid to another bidder. To avoid this happening we offer an optional 'Plus 1' bidding increment facility, whereby if the bidding is against you at your maximum bid the auctioneer will execute one further bid on your behalf. Please note that in the event of identical top bids priority is given to the first bid received.

### PLACING BIDS

#### LIVE BIDDING VIA [WWW.NOONANS.CO.UK](http://WWW.NOONANS.CO.UK)

You may bid in real time from your computer or mobile device. We provide an optional live video and audio feed of the auctioneer, allowing you to participate in much the same way as attending the auction. You may see your invoice and pay online directly after you've finished bidding. **There is no additional charge for this facility.**

#### ADVANCE BIDDING VIA [WWW.NOONANS.CO.UK](http://WWW.NOONANS.CO.UK)

We strongly advise this method if you wish to leave bids in advance as it is the easiest, most accurate and flexible way to leave your bids and gives you total control over them right up to the point that the lot is offered for sale. Bids made online cannot be seen by others and only become live at the point the lot is being sold. Up until this time your bids can be easily altered or cancelled. An automated email is sent to confirm any changes made. **There is no additional charge for online bidding.**

#### ADVANCE BIDDING VIA POST, EMAIL OR TELEPHONE

Whilst we are still happy to execute all bids submitted to us using post, email or telephone, it should be noted that all bids left with us in these ways will be entered at our offices using exactly the same bidding facility to which all our clients have access. **There is, therefore, no better way of ensuring the accuracy of your advance bids than to place them yourself online.**

If you are registered with Noonans you may bid by email to [bids@noonans.co.uk](mailto:bids@noonans.co.uk) or by telephone to 020 7016 1700.

**All bids placed by email or telephone must be received before 4 PM on the day preceding the sale.**

A bidding form is included in the back of this catalogue. If you wish to use this please fill it in carefully, to include all relevant information. Please ensure that you post this form so that it arrives, at the latest, the day before the sale.

### BIDDING IN THE AUCTION ROOM

You are very welcome to attend the auction and bid in person if you are registered with Noonans. Please note that the auction room is situated on the third floor of a Georgian building which doesn't have a lift. You may pay for and collect your lots during the auction.

### SALEROOM NOTICES

Should the description of a lot need to be amended after the publication of this catalogue, the amendments will appear automatically on the Noonans website, [www.noonans.co.uk](http://www.noonans.co.uk). All such amendments are also incorporated in the List of Saleroom Notices pertaining to this auction which are posted separately on the website. The auctioneer will refer to any notices at the time any affected lot is offered for sale.

### CATALOGUE ILLUSTRATIONS & THE INTERNET

Prospective bidders are reminded that the Noonans website features high-resolution colour illustrations of every lot in this auction. There may also be additional illustrations of any lot.

### BUYERS' PREMIUM

The rate for this sale is 24% of the Hammer Price (+ VAT where applicable).

### IMPORTATION VAT

Lots marked 'X' are subject to importation VAT of 5% on the Hammer Price unless re-exported outside the UK, as per Noonans Terms & Conditions of Business.

From 1 January 2021 importation VAT may be levied by EU countries on lots sold by Noonans and subsequently imported into those countries. Although Noonans is unable to advise buyers on customs regulations in their country of domicile, there is further information regarding EU importation VAT rates for collectable items in the Terms and Conditions published on the Noonans website.

### ARTISTS RESALE RIGHTS (DROIT DE SUITE)

Droit de Suite is a royalty payable to a qualifying artist or their estate every time the artist's work is sold at auction or by an art market professional during the artist's lifetime and for a period of up to 70 years following the artist's death. Royalties are calculated on a sliding percentage scale based on the hammer price. Lots subject to this royalty payment are marked with ARR in the catalogue.

## TREATED GEMSTONES

It is common practice for many gemstones to be subject to various treatments to improve their appearance. Sapphires and rubies are routinely heat treated to improve their colour and clarity, emeralds may be treated with oils or resin, other gemstones may be subject to treatments such as staining, irradiation or coating. Jade may be bleached, polymer/resin filled or dyed, or a combination of treatments used. Bidders should be aware that, unless stated to the contrary in the catalogue description, it should be assumed that the gemstones may be treated. Where reports are provided from gem laboratories, the opinions as to gradings and treatments of stones may differ slightly between laboratories and Noonans cannot be held responsible for any discrepancies.

## UNMOUNTED GEMSTONES

Please note that VAT at 20% is payable on the Hammer price for unmounted diamonds, rubies, sapphires and emeralds. Relevant lots are marked with an asterisk \*. See [www.gov.uk/guidance/the-margin-and-global-accounting-scheme-vat-notice](http://www.gov.uk/guidance/the-margin-and-global-accounting-scheme-vat-notice)

## EXPORT OF ORGANIC MATERIALS

Lots marked 'Y' are subject to CITES legislation. Organic materials, such as coral and tortoiseshell may be covered by CITES legislation and this may or may not impact export to other countries. Please be aware that it is the buyer's responsibility to arrange for any CITES export licences for their purchases. Please see [www.cites.org](http://www.cites.org). In addition to CITES, mother-of-pearl, coral, and tortoiseshell, if imported into the USA, will be subject to USA Fish and Wildlife regulations.

## WATCHES

All watches are sold as viewed.

Please note that watches with water-resistant cases have been opened to identify the movement and so will no longer be water-resistant unless a service to reseal the watch is undertaken at the buyer's expense.

Watches may have been repaired during the course of their lifetime and Noonans do not guarantee the authenticity of any individual component parts.

In some circumstances we are unable to ship the watch with its strap due to certain import restrictions regarding material derived from endangered or protected species.

## PRICES REALISED

The hammer prices of lots sold at Noonans auctions are posted at [www.noonans.co.uk](http://www.noonans.co.uk) in real time and telephone enquiries are welcome from 9 AM on the day after the auction.

## PAYMENT

You may access your invoice shortly after the hammer has fallen on your last lot. As we weigh lots at the time of cataloguing most shipping is already calculated, enabling you to settle your account and receive your lots in a timely fashion. Auction attendees may pay and collect during the course of the auction as soon as they have bid on their last lot.

[Full Terms and Conditions of Business](#) are available to read in the back of this catalogue and on our website.

## CONTACTS

### GENERAL SUPPORT

[auctions@noonans.co.uk](mailto:auctions@noonans.co.uk)  
020 7016 1700 or from overseas  
(+44) 20 7016 1700

### WEBSITE AND LIVE BIDDING SUPPORT

[Ian Anderson](mailto:ian@noonans.co.uk)  
[ian@noonans.co.uk](mailto:ian@noonans.co.uk)  
020 7016 1700 or from overseas  
(+44) 20 7016 1700



ENTRIES INVITED FOR OUR 2026 AUCTIONS

# JEWELLERY, WATCHES, SILVER & OBJECTS OF VERTU

10 MARCH

CLOSING FOR ENTRIES 27 FEBRUARY

23 JUNE

CLOSING FOR ENTRIES 15 MAY

22 SEPTEMBER

CLOSING FOR ENTRIES 14 AUGUST

1 DECEMBER

CLOSING FOR ENTRIES 30 OCTOBER

**ALL ENQUIRIES PLEASE CALL**

**020 7016 1700 OR EMAIL [JEWELLERY@NOONANS.CO.UK](mailto:jewellery@noonans.co.uk)**



AN ART DECO DIAMOND BROOCH  
CIRCA 1930

SOLD AT NOONANS IN MARCH 2025  
FOR HAMMER PRICE: £9,000

NOONANS MAYFAIR

16 BOLTON STREET MAYFAIR LONDON W1J 8BQ • [WWW.NOONANS.CO.UK](http://WWW.NOONANS.CO.UK)



## JEWELLERY

---

LOT

**285**



**1**  
A PAIR OF AQUAMARINE AND DIAMOND  
EAR PENDANTS, each articulated row of brilliant  
and baguette-cut diamonds terminating in a  
pear-shaped aquamarine drop, *total diamond weight*  
*approximately 0.75 carat, length 40mm.* £600–£800



**2**  
A QUATREFOIL DIAMOND BROOCH/PENDANT, CIRCA 1910,  
the central open cluster of old-cut diamonds, encircled by rose and  
old-cut diamond flowers and foliage, mounted in platinum, *total diamond*  
*weight approximately 2.40 carats, length 32mm.* £600–£800



**3**  
A PAIR OF STAR SAPPHIRE EAR STUDS, the  
circular star sapphire cabochons within pierced  
surrounds set with circular-cut white gemstones,  
*diameter 15.5mm.* £300–£500

**4**  
AN ART DECO DIAMOND LINE BRACELET, the graduated brilliant-cut diamonds each within an hexagonal-  
shaped setting, mounted in platinum, *total diamond weight approximately 3.80 carats, length 18.4cm.* £1,200–£1,800





5

AN EMERALD AND DIAMOND BROOCH, converted from an Art Deco jewel, of openwork design and set with step-cut emeralds, old cushion and rose-cut diamonds, mounted in platinum, length 21mm. £500–£600



6

AN ART DECO DIAMOND PANEL BROOCH, set with a graduated row of old brilliant-cut diamonds, within a rectangular-shaped surround set with similarly-cut diamonds, total diamond weight approximately 2.75 carats, length 27mm. £600–£800

7

AN ART DECO DIAMOND BRACELET, the openwork panels set throughout with single-cut diamonds, mounted in platinum, French assay marks, total diamond weight approximately 2.20 carats, length 17.5cm. £1,500–£2,000





**8**  
A CLOVER LEAF PENDANT, CIRCA 1900, the carved stained green chalcedony leaves spaced by half-pearls, to a belcher-link chain, mounted in gold, pendant stamped '15ct', pendant length 27mm, chain length 34.5cm. £240-£300



**9**  
A LATE 19TH CENTURY ENAMEL AND AMETHYST BRACELET BY CARLO & ARTHUR GIULIANO, the green guilloché enamel heart with glazed compartment verso, to a curb-link bracelet set with amethyst cabochons and suspending an associated red enamel heart pendant, mounted in gold, (composite), clasp and green heart with maker's mark, length 20cm. £400-£600



**10**  
AN EARLY 20TH CENTURY ENAMEL BROOCH, designed as a heart set with old brilliant-cut diamonds enclosed within a red guilloché enamel bow, with pearl highlights, mounted in silver and gold (pearls untested), total diamond weight approximately 0.55 carat, length 37mm. £200-£300



**11**  
A GEM-SET BROOCH, designed as a Scottish thistle and Tudor rose, with green enamel detailing and circular-cut amethysts, emeralds, rubies and diamonds, length 45mm. £500-£700

**12**  
A BEE NECKLACE, the hematite and ruby beads spaced by polished roundels and leading to an 18ct gold bee, maker's mark 'PD', Edinburgh hallmark for 1989, length 41cm. £300-£500





### 13

A 19TH CENTURY ENAMEL CLOAK CLASP, formed of two green and white enamel Tudor roses, with chain connector between, mounted in silver, fitted case by Child & Child, rose diameter 33mm.

£200–£400



### 14

AN ENAMEL AND DIAMOND FLOWER BROOCH AND EAR CLIPS, each modelled as a flower with green guilloché enamel petals and set with single and old brilliant-cut diamonds, mounted in gold, associated case by Collingwood, brooch diameter 38mm.

£1,200–£1,500

### 15

A PEARL NECKLACE, the graduated seed pearls, natural pearls and cultured pearls, measuring approximately 2–5.4mm, to a rose-cut diamond clasp, stamped '750', length 46cm.

£150–£200

According to a verbal report from GCS the necklace contains natural pearls of saltwater origin, together with seed pearls and 17 cultured pearls. Verbal report number 5786-0366.





16

AN EARLY 20TH CENTURY SAPPHIRE AND DIAMOND NEGLIGÉE PENDANT, the central Greek key motif with diamond highlight, suspending two knife-wire drops each terminating in pierced pear-shaped plaques set with circular-cut sapphires and diamonds, on a trace-link chain, mounted in gold, stamped '18ct', pendant length 48mm, necklace length 42.5cm. £500–£700



17

A DIAMOND FIVE STONE RING, set with a graduated row of brilliant-cut diamonds, stamped '18CT', total diamond weight approximately 0.50 carat, ring size N½. £300–£500



18

A LATE 19TH CENTURY FIVE STONE DIAMOND RING, the graduated row of old brilliant-cut diamonds to a pierced scrollwork gallery, mounted in gold, (one small diamond deficient), total diamond weight approximately 1.45 carats, ring size L–L½. £500–£600



19

A DIAMOND FIVE STONE RING, set with a graduated row of old brilliant-cut diamonds, to a plain polished hoop, stamped '18CT & PLAT', total diamond weight approximately 0.50 carat, ring size K. £150–£200

20

A GEM-SET BRACELET, comprising a graduated row of aquamarines with brilliant-cut diamond surrounds and circular-cut sapphire connections, stamped 'Pt950', total diamond weight approximately 0.75 carat, length 18.5cm. £1,400–£1,800





21

A SAPPHIRE AND DIAMOND NECKLACE AND EARRING SUITE BY BOODLE & DUNTHORNE, 2003, the wirework torque suspending a flowerhead drop set with pear-cut sapphires and centred with a brilliant-cut diamond, together with a pair of ear studs en suite, mounted in 18ct white gold, signed 'BOODLES', maker's mark 'B&D', numbered '0741142R', London hallmark, maker's cases, necklace length 19.5cm. £400-£600



22

A PAIR OF SAPPHIRE EAR STUDS, the circular-cut sapphires in a four claw setting, diameter 6mm. £200-£300

23

A SAPPHIRE AND DIAMOND THREE STONE RING, the oval mixed-cut sapphire claw-set between brilliant-cut diamonds, gold mounted, ring size K½. £150-£200



24

A DIAMOND THREE STONE RING, set with a graduated row of brilliant-cut diamonds in 18ct gold, UK hallmark, total diamond weight approximately 0.50 carat, ring size O. £400-£600



25

A DIAMOND RING, CIRCA 1900, set with an old brilliant-cut diamond with a similarly-cut diamond to either side and with rose-cut diamonds to the shoulders, mounted in silver and gold, principal diamond weight approximately 0.50 carat, ring size L-M. £200-£300



**26**

A GEM-SET SWEETHEART BROOCH, the crest featuring a lion between two crowns, set with brilliant and single-cut diamonds and calibr -cut rubies, length 29mm. **£400-£600**



**27**

REGIMENTAL INTEREST: AN ENAMEL AND DIAMOND BLACK WATCH SWEETHEART BROOCH, the Star of the Order of the Thistle set throughout with single-cut diamonds, the motto circlet reading 'NEMO ME IMPUNE LACESSIT' and containing the figure of St. Andrew, mounted in platinum, total diamond weight approximately 0.50 carat, length 33mm. **£300-£500**



**28**

REGIMENTAL INTEREST: A Grenadier Guards diamond sweetheart brooch, the flaming grenade pav -set throughout with rose-cut diamonds, fitted case, length 30mm. **£300-£400**



29

REGIMENTAL INTEREST: A GRENADIER GUARDS GEORGE V ROYAL CYPHER BROOCH, the interlaced initials set throughout with old-cut, single-cut and rose-cut diamonds, the crown surmount with red enamel and cabochon gemstone detail, mounted in platinum and gold, cased by Carrington & Co. Ltd., length 34mm. £500–£700

30

A 19TH CENTURY DIAMOND RING, the marquise-shaped plaque set with cushion and rose-cut diamonds, between openwork scroll shoulders to a reeded hoop, mounted in gold, ring size M. £600–£800



31

A 19TH CENTURY GEM-SET ST. GEORGE'S CROSS RING, the domed oval-shaped bezel with beaded decoration and set throughout with cushion-shaped rubies and old brilliant-cut diamonds, total diamond weight approximately 0.65 carat, ring size N½–O. £600–£800



32

A SAPPHIRE AND DIAMOND CLUSTER RING, CIRCA 1900, of marquise form and set with circular-cut sapphires and rose-cut diamonds, between bifurcated shoulders, mounted in 18ct gold, Chester hallmark, (no date letter), ring size M. £500–£600



**33**

AN EMERALD AND DIAMOND NECKLACE, the bicolour links of undulating design and with alternating polished and textured finish, leading to a series of textured flowerheads set with circular-cut emeralds and brilliant-cut diamonds, stamped '750', total diamond weight approximately 0.40 carat, length 41cm. £1,200–£1,500



**34**

A DIAMOND RING, of curb-link design, partially set with brilliant-cut diamonds, stamped '750', ring size M. £300–£400



**35**

A DIAMOND RING, CIRCA 1950, the tapered band of stylised crossover design and set with old brilliant and rose-cut diamonds, mounted in gold, later hallmark, total diamond weight approximately 0.85 carat, ring size M–N. £800–£1,000



**36**

AN 'ICON' RING BY GUCCI, with Double G and dot pattern, signed, stamped '750', Italian assay mark, numbered '13', maker's case, ring size L–M. £300–£500



**37**

A DIAMOND PENDANT, the brilliant-cut diamond in a bi-coloured 18ct gold mount, hallmark for 1997, maker's mark 'FO', diamond approximately 0.40 carat, length 21mm. **£400–£600**

**38**

A PAIR OF 'HAPPY DIAMOND' EAR STUDS BY CHOPARD, the square-shaped mounts with glazed compartment revealing a 'floating' brilliant-cut diamond, signed, numbered '2642350', stamped '750', maker's case, length 10mm. **£500–£700**



**39**

A PAIR OF BICOLOUR DIAMOND EAR CLIPS BY FOPE, of polished brick-link design, highlighted with a band of brilliant-cut diamonds, mounted in 18ct gold, signed, UK import mark, length 20mm. **£800–£1,200**

**40**

A 'FLEX'IT' BRACELET BY FOPE, the flexible bracelet composed of polished pyramid-shaped links and with brilliant-cut diamond highlights, stamped '750', signed, Italian assay marks, inner dimensions approximately 6 x 7cm. **£1,000–£1,200**





## 41

A PAIR OF 18CT GOLD CUFFLINKS, 1993, for the Royal College of Surgeons, of bicolour design, the rectangular panels with applied fleur-de-lys motif decoration, London hallmark, *panel length 17mm.* £400–£600



## 42

A PAIR OF ONYX AND DIAMOND CUFFLINKS, each hexagonal-shaped onyx panel centred with a brilliant or old brilliant-cut diamond, to single link connectors, *panel length 12mm.* £150–£200



## 43

A PAIR OF CHALCEDONY AND SAPPHIRE CUFFLINKS, FRENCH, the square domed chalcedony terminals each centred with a calibr -cut sapphire, with chain connectors, French assay marks, *terminal width 11mm.* £400–£500



## 44

A PAIR OF 9CT GOLD CUFFLINKS BY CROPP & FARR, engraved with the Union Jack and house flags of the White Star Line, the New Zealand Shipping Company and the Shaw Savill Line, *panel length 16mm.* £300–£500

*Provenance:* Formerly the property of Lord Sanderson of Ayot, Chairman of the Shaw Savill Line and son of Harold Sanderson, Chairman of both White Star and Shaw Savill.

Lord Sanderson married Evelyn Constance in 1927, daughter of J. Bruce Ismay, Chairman of the White Star Line at the time of the loss of the Titanic. Thence by family descent.

## 45

A SOVEREIGN BRACELET, the six Edward VII sovereigns (1902, 1905 x 4, and 1910) in 9ct gold collet links, UK hallmark, *length 18cm.* £4,000–£5,000





## 46

A PAIR OF ART DECO ROCK CRYSTAL, SAPPHIRE AND DIAMOND CUFFLINKS, FRENCH, the frosted rock crystal discs supporting a central cross of rose-cut diamonds, with shaped sapphire cabochons between, chain connectors, mounted in gold, French assay marks, disc diameter 13mm. £300–£500

The cufflinks display a white cross on a blue background, possibly the Saltire, the flag of Scotland.

## 47

A PAIR OF BLUE ENAMEL AND DIAMOND EAR CLIPS AND CUFFLINKS, converted from 19th century buttons, of scroll form in blue guilloché enamel with applied rose-cut diamond grille and scrolling borders, mounted in silver and gold, plaque diameter 16.5mm. £700–£1,000



## 48

A PAIR OF SAPPHIRE AND DIAMOND CUFFLINKS, of chequer board design, the domed circular panels set throughout with French-cut sapphires and brilliant-cut diamonds, with chain connections, panel diameter 11mm. £300–£500



According to a PMI test on the XRF analyzer, the cufflinks are testing as 18ct gold.

## 49

A GEM-SET CORONET BROOCH, the textured coronet gem-set and with pearl highlights, (pearls untested), length 40mm. £300–£400

According to a PMI test on the XRF analyzer the brooch is testing as 18ct gold.





## 50

A COLLECTION OF 'NAGA' JEWELS BY JOHN HARDY, comprising a coiled dragon pendant on chain, a coiled serpent ring, and a pair of dragon's mask ear clips, all set with treated gemstones, all with maker's mark and stamped '925', *pendant length including bale 35mm.*

£200–£300

## 51

A SILVER 'NAGA' DRAGON BANGLE BY JOHN HARDY, the realistically modelled dragon with scale pattern decoration, stamped '925' and '18K', maker's mark, *inner dimensions 6 x 5cm.*

£200–£300



## 52

A SILVER 'ALLIANCE' BANGLE BY GEORG JENSEN, of continual wraparound design, maker's mark, stamped '925S', *inner diameter 6cm.*

£150–£200



## 53

A CULTURED PEARL 'ROSE' NECKLACE BY FEI LIU, the uniform cultured pearls spaced by two large openwork roses set with circular-cut white gemstones, maker's mark 'FL', stamped '925', *length 90cm.*

£180–£200

## 54

A PAIR OF DIAMOND EARRINGS, modelled as two curb links, one set with brilliant-cut diamonds, the other with similarly-cut diamonds of brown tint, (diamonds untested for natural colour), stamped '14k' and 'RJM', total diamond weight approximately 0.40 carat, length 32mm.

£500–£700



## 55

A PLATINUM AND DIAMOND 'JAZZ' ETERNITY RING BY TIFFANY & CO., the brilliant-cut diamonds vari-set within round and marquise-shaped collets, signed, London hallmark, maker's case, total diamond weight approximately 0.80 carat, ring size P.

£800–£1,200

## 56

A BAND BY TIFFANY & CO., the plain polished band of court-shaped profile, signed, stamped 'PT950', ring size Q.

£260–£360



## 57

AN 'ATLAS' SILVER BANGLE BY TIFFANY & CO., with matte ground and polished Roman numeral decoration, signed, stamped '925', inner diameter 6cm.

£150–£200





## 58

AN ANTIQUE GOLD BROOCH, the 19th century wrythen decorated bar with beaded terminals, supporting seed pearl-set chain festoons below, and suspending a pair of dolphin head earrings, probably ancient, with emerald and green hardstone bead details and twisted hoop fittings, 19th century fitted case, impressed 'WB' to underside, length 5.2cm. **£1,400–£1,600**

According to a PMI test on the XRF Analyzer, the bar brooch is testing as 20ct gold, the chains as 15ct gold and the dolphin head drops as 22ct gold.

For a similar dolphin earring design dating from 2nd-1st century BCE, Greece, see example at The Met, Fifth Avenue, New York (displayed in Gallery 158).



## 59

A LATE 19TH CENTURY SHELL CAMEO BROOCH, carved to depict 'The Judgement of Paris', the Trojan Prince seated, wearing a Phrygian cap and awarding the prize of beauty to the Greek goddess, Aphrodite, mounted within an entwined gold frame, length 7cm. **£300–£500**

According to Greek mythology, Eris, the goddess of Strife, slighted by not being invited to the wedding of Thetis and Peleus, threw a golden apple amongst the guests. The apple was inscribed 'Let it be given to the fairest'. Aphrodite, Hera and Athena all claimed it as theirs, so Zeus instructed Paris, Prince of Troy, to decide which goddess was the fairest. After being offered a bribe by each goddess, Paris chose Aphrodite who awarded him the most beautiful woman in the world, Helen, Queen of Sparta. Paris' abduction of Helen led to the Trojan War and subsequent destruction of Troy.

### Literature:

Rowan. M: *Nineteenth Century Cameos*, pub. ACC Ltd. 2004.



## 60 Y

A SMALL COLLECTION OF ANTIQUE JEWELLERY, comprising a tortoiseshell piquéwork brooch with insect motif, a glazed seed pearl 'M' memorial jewel, a shell cameo pendant depicting Psyche, and an enamel, pearl and diamond boss pendant (damaged), mounted in gold, (pearls untested), various dimensions. (4) **£600–£800**



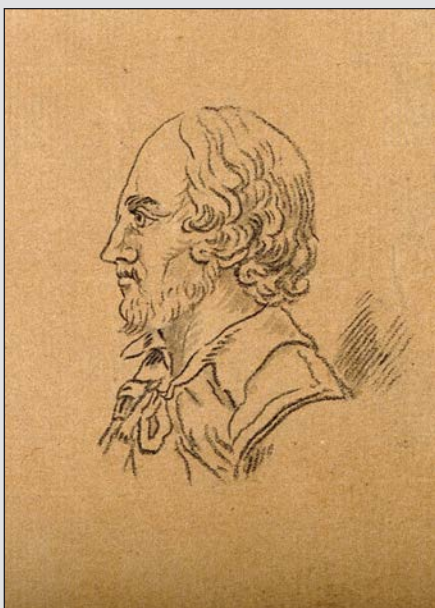
61

A LATE 19TH CENTURY HARDSTONE CAMEO PENDANT, FRENCH, the oval cameo depicting a dancing muse, within a rose-cut diamond surround and suspending a pearl drop below, mounted in silver and gold, (pearl untested), French assay mark, indistinct maker's mark, later fitted case by Massada Antiques, length 5.5cm. £1,000–£1,500

62

A HARDSTONE CAMEO RING, carved to depict Urania, the Greek Muse of Astronomy, draped in flowing robes and holding her globe aloft, with seed pearl highlights and ropetwist band, (one seed pearl deficient), ring size M. £200–£300

According to Greek mythology, Urania was one of the 'Nine Muses' produced by the union of Zeus and the Titan, Mnemosyne, goddess of memory.



63

A 19TH CENTURY HARDSTONE CAMEO STICK PIN, carved to depict the profile of William Shakespeare, set within a ropetwist surround, mounted in gold, length 6cm. £200–£300

Possibly after the drawing of Shakespeare in profile, circa 1793, by Johann Caspar Lavater (1741-1801), currently held in the Wellcome Collection Museum, London. Reference 315031.







68

A GOLD VEINED WHITE QUARTZ ALBERT CHAIN, with combined compass and thermometer fob attached. length of chain 29cm. £400-£600

69

A 9CT GOLD FROG PENDANT, the realistically modelled frog with articulated limbs, vari gem-set body and white stone eyes, Birmingham import marks, length 45mm. £400-£500

70

AN 18CT GOLD BAND, with scalloped edge and heart-motif decoration throughout, European convention and London assay marks, ring size L. £100-£150



71

A 9CT GOLD RING, 1999, the polished circular plaque to a plain band, UK hallmark, ring size S. £300-£400



72

AN 18CT GOLD BAND RING, 1908, with engraved heart and scrolling flowerhead design, maker's mark for William J. Holmes, Birmingham hallmark, ring size O. £400-£500

73

A 9CT GOLD, CITRINE AND HEMATITE NECKLACE BY DEAKIN & FRANCIS, 1985, centred with an oval hematite cabochon between circular-cut citrines and alternating polished hematite, faceted citrine beads and gilt roundels, maker's mark, Birmingham hallmark, length 43cm. £200-£300





### 74

A GARNET AND DIAMOND PENDANT, the pear-shaped spessartine garnet within a brilliant-cut diamond frame beneath a similarly-set surmount, mounted in 18ct gold, to an unassociated chain, pendant with UK hallmark, clasp stamped '925', total diamond weight approximately 0.60 carat, pendant length 32mm. £500–£700

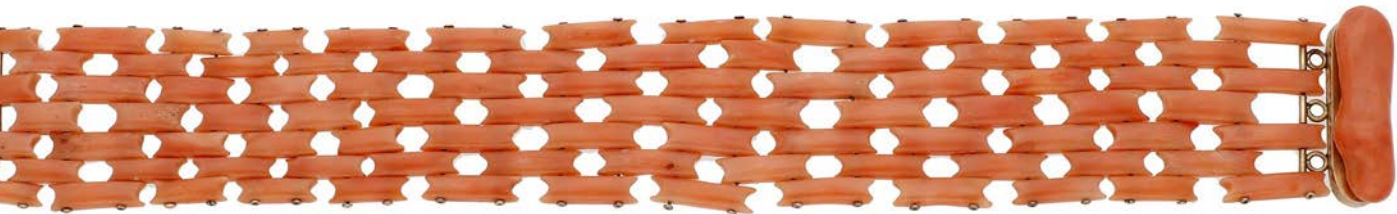


### 75

A GEM-SET BROOCH / PENDANT, 1971, the polished chalcedony with applied foliate cluster within a scrolling foliate surround, with turquoise cabochon and cultured pearl highlights throughout, mounted in 9ct gold, UK hallmark, maker's mark 'TAR', length 6.1cm. £300–£500

### 76 Y

A LATE 19TH CENTURY CORAL BRACELET, the pierced strap composed of shaped *Corallium rubrum* links, mounted in gold, length 19.5cm. £300–£500



### 77 Y

A CULTURED PEARL AND CORAL NECKLACE AND EARRING SUITE, the cultured pearls spaced by *Corallium rubrum* beads and leading to a coral frontispiece with seed pearl tassel drop, the earrings en suite, stamped '18CT', necklace length 62cm. £600–£800





**78**

A 19TH CENTURY CITRINE AND SEED PEARL FRINGE NECKLACE, the two rows of seed pearls each suspending a fringe of graduated oval-shaped citrines, to a gold clasp set with a bouton-shaped pearl, (pearls untested), French assay mark, partial maker's mark, length 42cm.

£400–£600

**79**

A SAPPHIRE AND DIAMOND RING, set with circular-cut sapphires and brilliant-cut diamonds, total diamond weight approximately 0.50 carat, ring size M.

£500–£800



**80**

A CITRINE AND DIAMOND RING, the circular-cut citrine beneath a foliate surmount of old brilliant-cut diamonds, with similarly-set marquise-shaped motif below, (later adapted), ring size F-G.

£200–£300





**81**

A SYNTHETIC SAPPHIRE NECKLACE, the cable link chain leading to a frontispiece designed as a pair of hands holding a synthetic sapphire heart, the cuffs set with circular-cut white gemstones, stamped '750', length 42.5cm.

£400–£500



**82**

A SAPPHIRE AND DIAMOND CLUSTER RING, the oval mixed-cut sapphire claw-set with a surround of brilliant-cut diamonds, French assay mark, maker's mark 'AM', total diamond weight approximately 1.80 carats, ring size L½.

£1,500–£2,000



**83**

A BURMESE PINK SAPPHIRE AND DIAMOND RING, the circular-cut pink sapphire within a cluster of brilliant-cut diamonds with a marquise-cut diamond to either side, mounted in 18ct gold, UK hallmark, total diamond weight approximately 0.35 carat, ring size M.

£500–£800

According to a verbal report from GCS, the ruby is testing as of Burma (Mogok) origin, with no indications of heating. Verbal report number 5785-3859.



**84**

A SAPPHIRE AND DIAMOND CLUSTER RING, the oval mixed-cut sapphire collet-set within a surround of brilliant-cut diamonds, stamped '18CT', total diamond weight approximately 0.65 carat, ring size M.

£600–£800



**85**

AN 18CT GOLD RUBY AND DIAMOND CLUSTER RING, 1974, of target design, the central oval-cut ruby within a surround of single-cut diamonds further enclosed by circular-cut rubies, ring size R.

£300–£500



**86**

A LAPIS LAZULI BEAD NECKLACE, the beads, measuring approximately 10mm, with three reeded bead spacers, length 46cm. **£240-£300**

**87**

A SYNTHETIC CORUNDUM AND DIAMOND RING AND EARRING SUITE, the ring comprising a heart-shaped synthetic ruby and sapphire collet-set within a surround of brilliant-cut diamonds, together with a pair of ear clips en suite, stamped '750 18K', total diamond weight approximately 0.95 carat, ring size N. **£600-£800**



**88**

A NATURAL PEARL NECKLACE, the graduated row of natural pearls to a pierced diamond clasp, length 42cm. **£1,500-£2,000**

Accompanied by a report from The Gem & Pearl Laboratory confirming the pearls are of natural saltwater origin. Report number 26137, dated 4 July 2025.

## EARLY JEWELS



89

A **MEDIEVAL 13TH CENTURY GOLD AND GARNET RING**, the pie-dish bezel set with an oval cabochon garnet (sunken), between stepped shoulders to distorted shank, ring size probably L–N, weight 1.9gm. £600–£800

*Provenance:* This ring is a detectorist find, discovered near Saxmundham, Norfolk in May 2024. It is recorded on the Portable Antiquities Database ref: NMS-394A77 and disclaimed as Treasure ref: 2024-T719.



90

A **LATE 15TH CENTURY SILVER VERVEL FOR POLE OF SUFFOLK**, the Type A (Lewis & Richardson, 2019) washer-type vervel inscribed to one side 'Pole' and to the other '[S] ufolk', in black letter script, with further foliate sprays, diameter 11.5mm, weight 0.6gm. £400–£600

**John de la Pole, 2nd Duke of Suffolk** (1442–1492) was a nobleman and son of William de la Pole (1396–1450), a favourite of Henry VI. John was married to Elizabeth of York (Plantagenet), hence brother-in-law to Edward IV and Richard III. He is interred at Wingfield Church, Suffolk, his tomb topped with a stone effigy of the Duke in full regalia and his wife, arguably one of the finest examples of its type ever produced.

John and Elizabeth had 11 children, including **John de la Pole, Earl of Lincoln** (1460–1487); **Edmund de la Pole, 3rd Duke of Suffolk, 6th Earl of Suffolk** (1471–1513); **Sir William de la Pole** (1478–1539), Knight of Wingfield Castle, Suffolk and **Richard de la Pole** (1480–1525). John, Edmund and Richard were all Yorkists and pretenders to the English Crown.

### Literature:

For a comparable Type A vervel, with black letter script and foliate details, dated circa 1483, see Catalogue No. A01, Lewis & Richardson, *Inscribed Vervels*, Bar Publishing, 2019, p29.



## 91

### A LATE 14TH / EARLY 15TH CENTURY SILVER GILT FEDE AND CROWNED HEART

FINGER RING, CIRCA 1500, the applied bezel composed as a heart from which sprouts two quatrefoil foliate sprigs, beneath a crown surmount, the band decorated with quatrefoil motifs within squares and lozenges, to a clasped hands fede motif verso, ring size T, weight 5.5gm.

£300–£400



*Provenance:* This ring was discovered by a metal detectorist in July 2023 near Tarrant Hinton, Dorset. It has been recorded on the Portable Antiquities Scheme database ref: DOR-387E58 and disclaimed as Treasure. For a similar example see Dalton, 1008.

The motif of a heart with sprouting foliate motifs appears on rings in the late 14th and 15th century. Dalton describes the quatrefoil foliate motifs as forget-me-nots.

In an article published by The Metropolitan Museum of Art, Deirdre Larkin suggests that the quatrefoil foliate motif often seen in Medieval art is actually Herb Paris (*Paris quadrifolia*). She quotes John Gerard in *The Grete Herbal or Generall Historie of Plants*:

'Herb Paris riseth up with one small tender stalke two hands high; at the very top come forth foure leaves directly set one against another in the manner of a Bergandian Crosse or True-Love knot: for which cause among the Antients it has been called Herbe True-love'.

Susanna Greer Fein argues that *Paris quadrifolia* was an oft-used emblem of the opposition between profane and spiritual love in late-Medieval poems and sermons, and was employed simultaneously as a symbol of the transience of early love and as an emblem of heavenly love expressed in the sign of the cross.

## 92

A 16TH CENTURY SILVER GILT FEDE RING, the bezel modelled as the fede motif of a pair of clasped hands, with moulded cuffs, between cinquefoil rose flowerhead motifs, to a ropetwist band, ring size V, weight 4.0gm.

£200–£300



*Provenance:* This ring was discovered by metal detectorist in July 2023 near Tarrant Rushton, Dorset. It has been recorded on the Portable Antiquities Scheme database ref: DOR-249DC7 and disclaimed as Treasure ref: 2023-T1101.



## 93

A PAIR OF ANTIQUE GARNET EARRINGS, the navicella-type (boat-shaped) hoops with an applied beaded girdle and a cabochon garnet to the front in a beaded collet setting, to wirework fittings, length (front to back) 18.5mm.

£300–£500

According to a PMI test on the XRF Analyzer, the gold is testing as 17ct gold, containing traces of bismuth.



## 94

A LATE 16TH / EARLY 17TH CENTURY DECORATED POSY RING, inscribed within 'A FRENDES GEFT', the exterior decorated with scale pattern, each keyed for enamel within a raised polished border, ring size F–G, weight 1.1gm. £700–£900

*Provenance:* This ring was discovered by a metal detectorist in March 2023, near Horton in the Ribble Valley, Lancashire. It is recorded on the Portable Antiquities Scheme database ref: LANCUM-71744B and disclaimed as Treasure ref: 2023-T236.

The small size of this ring is typical of decorated posy rings of the early 17th century. There is some evidence that the rings were worn higher up the finger, above the knuckle.



## 95

AN 18TH CENTURY GOLD POSY RING, the plain band inscribed to the interior 'LOVE IS(?) THE BOND OF PEACE' (sic), indistinct maker's mark, ring size S. £500–£700

This motto is a popular example – it is recorded in various forms in Evans, J: *English Posies and Posy Rings*, OUP, 1931, p73-74.



## 96

AN 18TH CENTURY GOLD POSY RING, the plain gold band inscribed to the interior 'MY LOVE TO THEE SHALL CONSTANT BE' in italic script with long 's', maker's mark 'JG' in black letter, probably for John Gamon, ring size R. £600–£800

The goldsmith John Gamon registered this mark in June 1739, see Grimwade A. G., *London Goldsmiths 1697-1837*, Faber & Faber 1976, no 1348.



## 97

A LATE 16TH / EARLY 17TH CENTURY RING, PROBABLY SPANISH, the square bezel set with a (later replaced) square step-cut emerald, and decorated with black and white enamel, the underside of the bezel with engraved initials 'CA', between flared and tapering shoulders decorated with stylised foliate motifs against black enamel ground, ring size Q, weight 8.3gm. £3,000–£5,000

*Provenance:* From a Private Collection.

In 1531 Spanish conquistadors, led by Francisco Pizarro, first landed on the coast of South America, in Peru and discovered that the natives of this 'New World' possessed plentiful supplies of both gold and particularly fine emeralds. The conquistadors moved inland, seizing the gold of the Aztec, Maya and Inca peoples and so began an immense transfer of precious metal across the Atlantic. In the 1550s alone, Spain shipped more than 100,000 lb of gold eastwards out of the New World.

In *Renaissance Jewellery*, Yvonne Hackenbroch comments on comparable 16th century Spanish rings, with a similarly thick shank, "the weighty execution is typically Spanish".

### Literature:

Hackenbroch, V. : *Renaissance Jewellery*, pub. for Sotheby Parke Bernet Publications, Philip Wilson Publishers, in association with the Metropolitan Museum, New York, 1979. p.334.



## NORFOLK MEMORIAL RINGS

### THE FOLLOWING TWO LOTS ARE FROM PROMINENT NORFOLK FAMILIES FROM KINGS LYNN

98

#### THE JOHN CARY RING

A GOLD AND ENAMEL MEMORIAL RING, CIRCA 1776, the oval glazed bezel enclosing cursive monogram 'J C', within zig zag and spotted border, the black enamelled band with milled edge and gold lettering displaying 'JOHN . CARY . DIED . 31 . DEC : 1776 . AGED . 84', ring size N. £600–£800



#### John Cary (1692–1776)

John Cary was three times Mayor of the ancient borough of Lynn (Kings Lynn) in Norfolk, in the years 1740, 1754 and 1765, where his family had resided since leaving London at the time of the Great Fire in 1666.

The ancient family of Cary derives its name from the manor of Cary, or Kari, as it is called in the Domesday Book, situated in the parish of St. Giles-in-the-Heath, near Launceston.

A memorial mural tablet to John Cary is located at St. Nicholas Chapel, King's Lynn, reading: 'John Cary, Esq., who was three times Mayor of this town; he died upon the last day of the year 1776, in the 84th year of his life. He was one of the best of parents and in every station of life, an honest and good man'.



99

#### THE HENRY GOODWYN RING

A GOLD AND ENAMEL MEMORIAL RING, CIRCA 1805, the broad band with milled edge and white enamel border, the central black enamel displaying gold lettering: 'HENRY . GOODWYN . DIED 31 JULY . 1805 . AGED 92', London hallmark, maker's mark 'WH', ring size R. £300–£400

#### Henry Goodwyn (1713–1805)

Henry Goodwyn, son of John Goodwyn (1672–1763) was from an old Norfolk family who had resided in the borough of Lynn since leaving London at the time of the Great Fire in 1666. Henry's father John was four times Mayor of Kings Lynn in 1721, 1728, 1738 and 1749.

In early life Henry Goodwyn served in the Royal Navy. He subsequently entered the Mercantile Marine of the Hon. East India Company, and made several voyages to China, where he amassed a considerable fortune, and purchased a brewery at Deptford, the Red Lion brewery at St Katharine's Wapping, which was to rank as London's seventh brewer in terms of output. Goodwyn's Brewery was an early adopter of steam power and in May 1784 installed a 4-horsepower Boulton & Watt steam engine, replacing the four horses that had previously powered its mill. Other major breweries, such as Whitbread's and Calvert's quickly followed suit, purchasing their own steam engines later the same year.

The Hoare family, associated with the well-known Hoare's Bank, purchased the brewery in 1802. The brewery was acquired by Charrington Brewery in 1933 and closed down the following year, in 1934.

Henry Goodwyn resided near Palace Yard, Westminster; in Essex Street, Strand, at East Lodge, Enfield Chase, at Maize Hill Castle, Blackheath; and at Park House, Maidstone, where he died in 1805. He is buried at Deptford Church.

#### Literature:

Goodwyn, Major Henry William: *The Goodwyns of Lynn Regis, Norfolk*, pub. Edward King Booksellers, Lymington, Hants, 1877.

100

TWO 19TH CENTURY GOLD MEMORIAL RINGS, one with glazed hair compartment and black enamel detailing mounted in 18ct gold, the other with plain polished bloodstone plaque, both with personal inscriptions dated 1837 and 1835 respectively, first with London hallmark, ring sizes J–K. £300–£400





### 101

**A MID 19TH CENTURY ONYX AND DIAMOND MOURNING LOCKET**, the heart-shaped onyx with applied heart to the centre set with pear and cushion-shaped diamonds, beneath a rose-cut diamond-set surmount formed of the crowned initials 'RMR', the whole opening to reveal a glazed interior containing portraits of a lady and gentleman, mounted in gold, *length 6.2cm.* **£2,000–£3,000**



### 102

**AN 18CT GOLD AND BLACK ENAMEL MEMORIAL RING, 1841**, the reeded ground with black enamel reading 'In Memory' within scrolling foliate borders, with engraved inscription to interior reading 'Peter du Cane Esq. Obt. 23 May 1841 aet 62,' London hallmark, maker's mark 'WE', *ring size P.* **£380–£420**

#### **Peter du Cane (1778–1841)**

The Du Cane family were London merchants descended from the noble Flemish Huguenot family by the name of Du Quesne. The Du Canes settled in Essex in the early eighteenth century. Peter was the son of Peter Du Cane (Snr) (1713–1803), a leading 18th century cloth merchant, trader and businessman. He purchased Braxted Park in 1745 and established his family there from 1751. On his father's death in 1803 Peter inherited the Braxted estate and went on to accomplish considerable improvements and alterations to the house and gardens.

He served as Sheriff of Essex between 1825–1826 and was Member of Parliament for Steyning from 1826–1830. On his death in 1841, the Braxted estate passed to his cousin Sir Charles Du Cane.

### 103

**A 19TH CENTURY MEMORIAL RING, 1837**, the band with recessed black enamel decoration and gold lettering: 'IN . MEMORY . OF', with scrolled foliate border and centred with a glazed hairwork compartment, the interior inscribed 'Sarah Turner, ob, 18th, Feb'y, 1838, at, 71', London hallmark, together with a hardstone 'Forget Me Not' dress stud, *ring size O.* **£400–£600**





### 104

A PAIR OF CULTURED PEARL AND DIAMOND EAR PENDANTS, the graduated cultured pearls of white and black tint spaced by foliate motifs set with brilliant-cut diamonds, stamped '750', Italian assay marks, total diamond weight approximately 0.40 carat, length 5cm.

£300–£500

### 105

A NATURAL PEARL AND SEED PEARL NECKLACE, the graduated strand of natural pearls and seed pearls terminating in an old brilliant-cut diamond clasp, length 44cm.

£200–£400

According to a verbal report from GCS, the pearls are testing as natural saltwater origin. The seed pearls are untested. Verbal report 5785-3994.



### 106

A LATE 19TH CENTURY PEARL AND DIAMOND BAR BROOCH, set with a cluster of pearls of golden-brown tint and old brilliant-cut diamonds, mounted in gold, (pearls untested), total diamond weight approximately 1.40 carats, length 43mm.

£500–£700



### 107

A 9CT GOLD MOONSTONE AND DIAMOND DRESS RING, the moonstone cabochon set within a surround of brilliant-cut diamonds, Sheffield assay mark, total diamond weight approximately 0.35 carat, ring size J.

£150–£200



### 108

TWO DIAMOND RINGS, the first set with an old cushion-cut diamond in an 18ct gold setting, (shank cut), the second set with brilliant-cut diamonds, first with UK hallmark, second stamped '18CT', first diamond weight approximately 1.20 carats, second total diamond weight approximately 1.00 carat, ring size M.

£800–£1,200



## 109

A CULTURED PEARL NECKLACE, the double row of cultured pearls, measuring approximately 7–7.5mm, to a reeded crescent-shaped and brilliant-cut diamond clasp, stamped '750', length 38.5cm.

£500–£700

## 110

A GOLD AND TURQUOISE BRACELET, CIRCA 1860, the flexible slightly concave strap with sliding fastener applied with a knot motif with turquoise highlights, inner diameter 5.20 to 8.70cm (fully extended).

£1,500–£2,000

According to a PMI test on the XRF Analyzer, the gold is testing as 20ct.





111

A DIAMOND PENDANT, the textured heart-shaped pendant set with various cut diamonds, beneath a detachable 9ct gold bale, London hallmarks, total diamond weight approximately 2.90 carats, length 35cm. £3,000–£4,000



112

A 9CT GOLD AND ZIRCON BROOCH, 1961, the stylised bicolour spray set with circular-cut blue zircons, Birmingham hallmark, length 6cm. £240–£280

This lot is being sold on behalf of the West Sussex charity Friends of Acquired Brain Injury Survivors (FABIS). The charity provides free or subsidised holidays and social events for acquired brain injury survivors. For more information see [www.fabischarity.com](http://www.fabischarity.com). Charity number: 1198982.



113

AN 18CT GOLD DRESS RING, CIRCA 1970, of bombé form, composed of overlapping textured leaves, Birmingham import mark, ring size M½. £400–£600



## 114

**AN AQUAMARINE AND DIAMOND NECKLACE BY CAPLAIN, PARIS**, the bicolour necklace of woven design and leading to a brilliant-cut diamond frontispiece centred with a cushion-shaped aquamarine, the clasp set with a sapphire cabochon, signed 'Caplain Paris', French assay mark, *total diamond weight approximately 5.80 carats, length 42cm.*

**£3,000–£5,000**



### 115

A DIAMOND PENDANT BY DAMIANI, the open circle incorporating concentric half hoops, set throughout with brilliant-cut diamonds, with applied 'D' for the maker, the bale bearing maker's name, to an unassociated snake-link chain, pendant signed, stamped '750', chain stamped '585', clasp stamped '375', total diamond weight approximately 1.55 carats, pendant length 33mm, chain length 52cm. £800–£1,000



### 116

A RING BY BRAEMER-JENSEN, CIRCA 1960, the bold circular mount with vertical ribbed decoration, inset with faceted glass of brown tint, to a polished band, maker's mark 'Br.J', stamped '585', ring size approximately D–E. £700–£800

The Danish jewellers **Guldsmed Bræmer-Jensen** opened its doors in 1912, the company started by Otto Valdemar Bræmer-Jensen at Slotsgade 5 in Randers. In 1930, he moved the business to its current location at Torvegade 2. Otto died at a young age and his son Georg took over the running of the business in 1947, at this time selling mostly silverwares and cutlery. Today, the business is under the management of the third generation of the family, Georg's son Mikael Bræmer-Jensen, now mainly focusing on fine jewellery.



### 117

A DIAMOND RING, 1985, the wishbone-shaped band set to the front with brilliant-cut diamonds, London hallmark, total diamond weight approximately 0.70 carat, ring size O½. £400–£500



### 118

A DIOPSIDE AND DIAMOND CLUSTER RING, the chatoyant diopside cabochon within a surround of rose-cut diamonds, stamped '18ct PLAT', numbered '54', ring size I½. £400–£600



### 119

AN OPAL AND DIAMOND DRESS RING BY BECKER DESIGNS, CIRCA 1997, the pear-shaped opal cabochon within a polished wraparound mount with three brilliant-cut diamond highlights, mounted in 18ct gold, sponsor's mark, UK import mark, ring size O. £1,200–£1,500



## 120

AN 18CT GOLD AND DIAMOND NECKLACE, the graduated rivièrè collet-set throughout with brilliant-cut diamonds, European convention and Sheffield assay marks, total diamond weight approximately 4.00 carats, length 45.5cm. **£3,000–£3,600**

## 121

A PAIR OF DIAMOND EAR HOOPS, 2007, pavé set to the front and inner hoop with brilliant-cut diamonds, mounted in 18ct gold, London hallmark, numbered, total diamond weight approximately 1.80 carats, length 31mm. **£1,200–£1,500**



## 122

A PAIR OF DIAMOND EAR HOOPS BY WEMPE, the polished hoops set with brilliant-cut diamonds to the front and inside back, signed and numbered '3894', stamped '750', hoop diameter 42mm. **£800–£1,200**



## 123

A SYNTHETIC SAPPHIRE AND DIAMOND CLIP, CIRCA 1940, domed and set with a row of calibre-cut synthetic sapphires between a series of rose-cut diamonds, length 20mm. £200–£300



## 124

A SAPPHIRE AND DIAMOND ETERNITY RING, set with an alternating row of step-cut sapphires and brilliant-cut diamonds, total diamond weight approximately 0.90 carat, ring size N. £500–£700



## 125

A DIAMOND HALF ETERNITY RING, set to the front with brilliant-cut diamonds, total diamond weight approximately 1.00 carat, ring size Q½–R. £500–£700



## 126

AN ART DECO GEM-SET NIGHT AND DAY RING, set with calibre-cut sapphires, rubies and single-cut diamonds, mounted in platinum, (one diamond deficient), ring size N. £400–£600



## 127

A SAPPHIRE AND DIAMOND BANGLE, the hinged bangle channel-set to the front with square-cut sapphires and baguette-cut diamonds, with beaded decoration and pierced gallery, stamped '18K', total diamond weight approximately 0.75 carat, inner dimensions 5.7 x 4.8cm. £1,200–£1,500

## 128

A PAIR OF SAPPHIRE AND DIAMOND EARRINGS, set throughout with brilliant-cut diamonds, the sapphire cabochon surmount above a winged motif and pear-shaped drop, suspending two similarly-cut sapphires within, stamped 'Pt950', total diamond weight approximately 0.95 carat, length 45mm. **£1,400–£1,800**



## 129

A PAIR OF ART DECO SYNTHETIC SAPPHIRE AND DIAMOND EAR PENDANTS, each articulated row of old brilliant-cut diamonds suspending a lozenge-shaped synthetic sapphire and rose-cut diamond drop, mounted in platinum, total old brilliant-cut diamond weight approximately 0.45 carat, length 38mm. **£300–£500**

## 130

A DIAMOND SINGLE STONE RING AND BAND, the step-cut diamond, weighing 1.70 carats, between brilliant-cut diamond shoulders, together with a band partially-set with brilliant-cut diamonds, both mounted in platinum, UK hallmarks, ring size L. **£3,600–£4,600**

Accompanied by a report from GIA stating that the diamond weighing 1.70 carats is G colour, VS1 clarity. Report number 16411195, dated 25 January 2008.





**131**

AN 18CT GOLD COLLAR NECKLACE BY ROY CECIL KING, 1962, of graduating woven-link design, maker's mark 'RCK', London hallmark, *length 42cm.*

**£3,000–£3,600**



**132**

A BLUE TOPAZ AND DIAMOND NECKLACE, BRACELET AND EAR CLIP SUITE, set with a continuous row of heart-shaped blue topaz, the clasp set with brilliant-cut diamonds, the bracelet en suite and the ear clips with detachable drops, *necklace length 39.5cm, bracelet 17cm, ear clips 28mm.*

£2,800–£3,400

**133**

A BLUE TOPAZ RING, the heart-shaped blue topaz to an 18ct gold reeded mount, UK hallmark, *ring size O–P.*

£300–£500



**134**

A GEM-SET DRESS RING, the heart-shaped white gemstone to an 18ct gold reeded mount, UK hallmark, *ring size O.*

£300–£500





### 135

AN 18CT GOLD AND DIAMOND SPRAY BROOCH, of bicolour design, the textured leaves with single-cut diamond highlights, Italian assay marks, London import mark for 1997, length 6cm. **£900–£1,000**



### 136

A RUBY AND DIAMOND ETERNITY RING BY JEAN SCHLUMBERGER FOR TIFFANY & CO., set throughout with circular-cut rubies and brilliant-cut diamonds spaced by cross motifs, signed 'Tiffany & Co. Schlumberger', stamped '750' and 'PT950', total diamond weight approximately 0.80 carat, ring size N. **£1,800–£2,600**



### 137

A DIAMOND BAND RING, pavé-set to the front with brilliant-cut diamonds and with pierced star motifs to the interior, stamped '750', total diamond weight approximately 0.70 carat, ring size M½–N. **£600–£800**



### 138

AN 18CT GOLD AND GEM-SET 'QUEEN OF HEARTS' BROOCH RETAILED BY GARRARD & CO., CIRCA 1997, of bicolour design, with cultured pearl and heart-shaped peridot cabochon highlight, signed, London import mark, sponsor's mark, length 45mm. **£500–£700**

139

A GEM-SET NOVELTY BROOCH BY KUTCHINSKY, 1965, designed as a winking cat, with onyx cabochon body and emerald cabochon and single-cut diamond eye, with textured fur and polished whiskers, mounted in 18ct gold, signed, maker's mark, London hallmark, maker's case, length 46mm.

£1,000–£1,200



140

A PAIR OF 18CT GOLD EAR CLIPS BY KUTCHINSKY, 1972, of twisted hoop design, signed, UK hallmark, length 29mm.

£1,500–£1,800



141

A PAIR OF DIAMOND EAR CLIPS BY KUTCHINSKY, 1970, the textured hoops with pierced detailing and graduated brilliant-cut diamond highlights, mounted in 18ct gold, signed, UK hallmark, total diamond weight approximately 0.70 carat, length 30mm.

£1,800–£2,400



142

AN 18CT GOLD AND DIAMOND RING BY KUTCHINSKY, 1974, the tapered band with textured finish and set to the front with a lozenge-shaped cluster of brilliant-cut diamonds, signed, maker's mark, London hallmark, total diamond weight approximately 0.50 carat, ring size O.

£800–£1,200

143

A TIGER'S EYE AND DIAMOND DRESS RING BY KUTCHINSKY, 1971, designed as a stylised knot of polished tiger's eye and brilliant-cut diamonds, to a textured hoop, mounted in 18ct gold, signed, UK hallmark, total diamond weight approximately 1.20 carats, ring size L.

£1,500–£2,000





**144**

AN AMETHYST RIVIÈRE NECKLACE AND EAR CLIPS, claw-set throughout with oval-cut amethysts with a similarly-cut drop to the front, the ear clips of similar design, length 40cm. £1,000–£1,500



**145**

A PAIR OF DIAMOND EAR PENDANTS, the pear-shaped hoops beneath brilliant-cut diamond-set surmounts, Italian assay marks, stamped '18k', maker's mark conjoined 'NF', total diamond weight approximately 0.30 carat, length 42mm. £500–£600



**146**

A PAIR OF DIAMOND EARRINGS, of stylised spray design, set throughout with brilliant and marquise-cut diamonds, total diamond weight approximately 2.60 carats, length 30mm. £800–£1,200



**147**

A PAIR OF DIAMOND EARRINGS, the stylised hoops set throughout with brilliant-cut diamonds, total diamond weight approximately 1.00 carat, length 25mm. £400–£600

According to a PMI test on the XRF analyser the hoops are testing as 17ct gold.



**148**

AN 18CT GOLD BEAD NECKLACE, 1994, the spherical beads formed of coiled wires and spaced by cultured pearls, Birmingham import mark, length 67cm. £2,600–£3,000





## 149

A GEM-SET HEART PENDANT, the heart-shaped amethyst in a reeded surround with old brilliant-cut diamond surmount and similarly-cut diamond and cultured pearl drop below, *total diamond weight approximately 0.65 carat, length 5cm.*

£300–£500

According to a PMI test on an XRF Analyzer the pendant is testing as 18ct gold.

## 150

A DIAMOND SINGLE STONE RING, set with a brilliant-cut diamond to a plain polished 18ct gold hoop, UK hallmark, *diamond weight approximately 0.30 carat, ring size J.*

£200–£300



## 151

A SAPPHIRE AND DIAMOND RING, the step-cut sapphire with a brilliant-cut diamond to either side, mounted in 18ct gold, UK hallmark, *total diamond weight approximately 0.20 carat, ring size N.*

£500–£700

## 152

A 22CT GOLD BAND, of plain polished form, London hallmark, *ring size O.*

£300–£360



## 153

AN AMETHYST BRACELET BY CROPP & FARR, 1966, the oval amethyst cabochons with reeded figure-of-eight links between, mounted in 9ct gold, maker's mark, UK hallmark, *length 19cm.*

£400–£500





### 154

A GEM-SET BEAD NECKLACE, the two rows of blue lace agate beads, measuring approximately 12.2mm, centred with a step-cut white topaz, stamped '750', Italian assay mark, length 37.5cm.

£800–£1,200



### 155

A MOONSTONE RING BY DIADORO, the moonstone cabochon within a surround of brilliant-cut diamonds, to a textured black hoop, maker's mark, stamped '750', ring size M.

£200–£300



### 156

A SAPPHIRE AND DIAMOND DRESS RING, the mixed-cut sapphires between brilliant-cut diamond highlights, stamped 'PLAT 9CT', ring size N½.

£150–£200



### 157

AN AQUAMARINE AND DIAMOND DRESS RING, the kite-shaped aquamarine with graduated brilliant-cut diamonds to one side, to a shaped hoop, stamped '750', Italian assay mark, total diamond weight approximately 0.60 carat, ring size M.

£1,000–£1,500

158

A BLUE CHALCEDONY AND ENAMEL 'TEARDROP' RING BY SHAUN LEANE, 2007, the shaped chalcedony cabochon within a blue guilloché enamel surround, mounted in 18ct gold, signed, maker's mark, UK hallmark, ring size Q. £1,500–£2,000



Born in 1969, **Shaun Leane** is a British goldsmith and long-term collaborator with the late fashion designer Lee Alexander McQueen, CBE.

At the age of 16, Shaun Leane started a seven-year apprenticeship in Hatton Garden with the company English Traditional Jewellery. On completion of his training, he continued to work for the firm for another six years, specialising in the restoration and reproduction of Victorian, Art Nouveau and Art Deco jewels.

A chance meeting with Alexander McQueen in 1992 allowed Leane to begin creating his own pieces. Having initially bonded over a mutual desire for creative freedom, the pair went on to design and make iconic and provocative catwalk jewels that challenged perceptions of sculptural form and femininity. Their passion for craftsmanship and symbolic design bridged the worlds of fashion and jewellery and saw the creation of three-dimensional pieces considered contemporary works of art in their own right.

Leane and McQueen worked together for over 17 years up until McQueen's death in 2010.

During his career Leane has collaborated with various houses, including Asprey, Boucheron, De Beers and Givenchy. His jewels are regularly seen on the red carpet, worn by celebrities such as Björk, Elton John, Kate Moss and Lady Gaga. In 2011, 30 of his works were exhibited at the Victoria and Albert museum's retrospective exhibition, Alexander McQueen: Savage Beauty. He is the four-time recipient of the UK Jewellery Designer of the Year, and, in 2020, published an extensive and personal monograph charting his 36 years as a designer-maker.

159

AN ENAMEL, SAPPHIRE AND DIAMOND BROOCH BY GERALD BENNEY, 1973, the lozenge-shaped plaque decorated with white enamel, with curled ribbons to either side of blue enamel and with a central row of circular-cut sapphires and brilliant-cut diamonds, mounted in 18ct gold, maker's mark 'AGB', London hallmark, maker's case, total diamond weight approximately 0.85 carat, length 6.8cm. £2,000–£3,000



**Gerald Benney** (1930–2008) was one of the giants of 20th century British silver and goldsmithing. His designs are always powerful, simple and identifiable. Technically he was highly innovative, and devised a method of texturing silver with tiny striations, initially achieved by a bent hammer; this process eliminates tarnish and fingerprints and creates an attractive 'bark finish' which, together with his revival of the use of enamel, became one of his signatures.

Born in Hull in 1930 Adrian Gerald Sallis Benney trained as a silversmith at Brighton College of Art, under Dunstan Pruden, and the Royal College of Art under Professor Robert Goodden, alongside contemporaries David Mellor and Robert Welch. In 1953 he secured his own workshop at Whitfield Place, off Tottenham Court Road, later relocating to Bear Road. He was elected a Liveryman of the Worshipful Company of Goldsmiths and had three one-man exhibitions at Goldsmiths' Hall in 1973, 1994 and 2005. He was the first British craftsman to ever hold four Royal Warrants at once and was appointed a Commander of the Order of the British Empire (CBE) in the 1995 New Year Honours 'for services to art'.

"My philosophy as such is to project and involve my own personal design theme without too much reference to others in the field."

**Literature:**

Wingfield, Mary Ann, *Modern British Jewellery Designers 1960–1980: A Collector's Guide*, pub. ACC Art Books, 2021.





## 160

A DIAMOND TWO STONE RING, of crossover design, set with two brilliant-cut diamonds, mounted in 18ct gold, UK hallmark, total diamond weight approximately 1.00 carat, ring size M.

£1,000–£1,200



## 161

A DIAMOND TWO STONE RING, of crossover design, set with two brilliant-cut diamonds, mounted in 18ct gold, UK hallmark, total diamond weight approximately 1.00 carat, ring size M.

£1,000–£1,200

## 162

A DIAMOND SINGLE STONE RING, the brilliant-cut diamond claw-set to polished band, stamped '18ct' and '96', diamond weight approximately 0.50 carat, ring size K.

£300–£400



## 163

A RUBY AND DIAMOND CLUSTER RING, the oval mixed-cut ruby, weighing 2.25 carats, within a surround of brilliant-cut diamonds, total diamond weight approximately 1.20 carats, ring size M½.

£1,500–£2,000



## 164

A RUBY AND DIAMOND RING, the pear-shaped ruby collet-set between polished circler motifs, with single-cut diamond highlights, ring size M.

£100–£200

## 165

AN 18CT GOLD NECKLACE, of bead and baton design, UK hallmark, length 52cm.

£500–£600





## 166

A LATE 19TH CENTURY SEED PEARL AND AMETHYST FRINGE NECKLACE, the seed pearls suspending a graduating row of oval mixed-cut amethysts, to plain barrel clasp, *length 39.5cm.*  
£800–£1,000

## 167

A PAIR OF PINK TOURMALINE AND DIAMOND EAR STUDS BY GARRARD & CO., the oval-cut pink tourmalines within a surround of brilliant-cut diamonds, mounted in 9ct gold, UK hallmark, partial maker's mark, *length 9mm.*  
£200–£300



## 168

AN 18CT GOLD SAPPHIRE AND DIAMOND CLUSTER RING, the oval mixed-cut sapphire claw-set within a surround of brilliant-cut diamonds, European convention marks, partial UK hallmarks, *total diamond weight approximately 0.80 carat, ring size R.*  
£300–£500



## 169

A SEED PEARL NECKLACE, CIRCA 1900, the detachable pendant / brooch set throughout with seed pearls and centred with an old brilliant-cut diamond, the necklace of conforming fringe design, mounted in gold, cased by R.G.Oldfield, Liverpool, length 40.5cm.

£1,200–£1,500



## 170

AN EARLY 20TH CENTURY GEM-SET JABOT PIN, the arrow with a chrysoberyl cat's eye and old brilliant-cut diamond cluster, mounted in gold, length 4cm.

£200–£260



## 171

AN EARLY 19TH CENTURY DIAMOND RING, the two rows of old brilliant-cut diamonds between pierced foliate shoulders, mounted in silver and gold, total diamond weight approximately 1.50 carats, ring size N–Q.

£600–£800



## 172

A 19TH CENTURY DIAMOND CLUSTER RING, set with cushion-shaped and old brilliant-cut diamonds, between openwork shoulders to a reeded hoop, mounted in gold, rubbed hallmark, total diamond weight approximately 1.10 carats, ring size K.

£400–£600



## 173

A BLUE ENAMEL AND SEED PEARL BANGLE, CIRCA 1900, the blue enamelled double heart centred with diamond highlights, within seed pearl borders and seed pearl bow surmount, to triple knife-edge bar gold cuff, inner diameter 5.6cm.

£900–£1,200



**174**

A CULTURED PEARL NECKLACE, the two rows of cultured pearls to an antique clasp applied with a carved labradorite 'Man in the Moon' within a star surround of rose-cut diamonds, mounted in silver and gold, clasp diameter 21mm, necklace length 37.5cm. £800-£1,000

**175**

A MID 19TH CENTURY KNOT BROOCH, designed as four interlocking plain polished hoops, length 40mm. £500-£700

According to a PMI test on an XRF Analyzer, the brooch is testing as 17ct gold.



**176**

AN OPAL AND DIAMOND BROOCH, CIRCA 1900, the lattice of old single-cut diamonds enclosed within a surround of opal cabochons, mounted in silver and gold, diameter 32mm. £800-£1,000

**177**

A MID 19TH CENTURY GOLD LOCKET, engraved to both sides with scroll and foliate decoration, stamped '15CT', length 6.5cm. £1,000-£1,500





178

A PAIR OF CULTURED PEARL AND TOURMALINE EARRINGS BY LILLY HASTEDT, 2019, the cultured pearl drops of pink tint, beneath a circular gemstone highlight, mounted in 18ct gold, maker's mark 'LH', length 32mm. £600–£800

179

A CULTURED PEARL BROOCH BY LILLY HASTEDT, 2013, the scrolling stem terminating in a baroque-shaped cultured pearl flower bud, with a diamond accent and petal surround, mounted in 18ct gold, maker's mark 'LH', UK hallmark, length 6.5cm. £300–£500



**Lilly Hastedt** grew up in Guatemala, and trained as a goldsmith in Germany and London, where her studio has been based for over 20 years. Her inspiration comes from the sights and sounds of the natural world which she experienced in her early years in Central America, motivating her to capture nature's beauty in her distinctive designs, whilst incorporating traditional jewellery making techniques at the heart of her work.



180

A PAIR OF 9CT GOLD EARRINGS, the circular discs of abstract textured form, maker's mark 'HAB', UK hallmark, diameter 19mm. £150–£200



181

A STAR SAPPHIRE RING BY LIZ TYLER, 2018, the cabochon sapphire in collet mount, within a bicolour sinuous setting, mounted in 18ct gold, maker's mark 'EVT', UK hallmark, ring size Q. £600–£800

Born in London, trained in Leicester, London and Maine, USA, **Liz Tyler** established her jewellery business in Clerkenwell in 1989 and is now based in North Dorset. Liz specialises in using anti-clastic raising techniques, her work incorporating a focus on curvaceous designs. Liz has won numerous awards including Designer of the Year and Best Design in Diamonds at the UK Jewellery Awards.



182

A GEM-SET 'SHARD' NECKLACE AND DROPS BY LEO DE VROOMEN, the cable-link chain leading to a frontispiece of polished iolite and rhodolite slices, with circular-cut sapphires between, the drops en suite, unsigned, maker's pouches, necklace length 41cm, drops 40mm. £3,000–£3,600

*Provenance:* The drops were purchased from De Vroomen, Elizabeth Street, London, on 15 December 2012, the necklace on 10 July 2014.

Accompanied by original receipts.

Born in Holland during the Second World War, **Leo de Vroomen** was the youngest of eight siblings. His family were tulip farmers but from an early age Leo dreamed of a different life.

Following his apprenticeship in The Hague and qualifying as a Master Goldsmith in Switzerland, he came to London in 1965. It was whilst lecturing at the Central School of Art and Design that he met his future wife, the artist and designer Ginnie. In 1976 together they founded **De Vroomen Design Ltd**, rapidly achieving international acclaim.

De Vroomen went on to be the winners of the coveted De Beers Diamonds International Award in 1974, winning a second award in 1986. In 1991, Goldsmiths' Hall held a retrospective exhibition of their work, marking 20 years of the partnership between Leo and Ginnie. A second exhibition at Goldsmiths' Hall in 2017, celebrated 50 years of De Vroomen jewellery, the jewellery exhibited against the backdrop of Ginnie's exquisite paintings.



### 183

A PAIR OF AQUAMARINE AND DIAMOND EAR PENDANTS, designed as a series of vari-cut aquamarine and brilliant-cut diamond clusters, stamped 'Pt950', total diamond weight approximately 1.15 carats, length 33mm. **£700–£900**



### 184

A PAIR OF DIAMOND EAR PENDANTS, each brilliant and baguette-cut diamond surmount suspending a further brilliant-cut diamond drop, total diamond weight approximately 1.80 carats, length 20mm. **£1,500–£2,000**



### 185

A PAIR OF DIAMOND EAR STUDS, each set with a brilliant-cut diamond in 9ct gold, UK hallmark, total diamond weight approximately 0.30 carat. **£100–£150**



### 186

A DIAMOND SINGLE STONE RING, set with a brilliant-cut diamond in a raised claw star-shaped setting, stamped '18KT', diamond weight approximately 0.25 carat, ring size N–O. **£400–£600**

### 187

AN EMERALD AND DIAMOND FRINGE NECKLACE, the front set with graduated brilliant-cut diamonds suspending a series of step-cut emeralds, to a curb-link chain, (composite), total diamond weight approximately 2.10 carats, length 50cm. **£800–£1,000**



## 188

AN OPAL AND DIAMOND PENDANT, the opal cabochon beneath a knife-edge surmount collet-set with brilliant-cut diamonds, the whole suspended by a curb-link chain, total diamond weight approximately 0.40 carat, pendant length 5.5cm. £600–£800



## 189

AN OPAL AND DIAMOND RING, 1909, set with three opal cabochons with old brilliant-cut diamonds between, to a carved scroll gallery, mounted in 18ct gold, Birmingham hallmark, total diamond weight approximately 0.25 carat, ring size J. £500–£700



## 190

A DIAMOND CLUSTER RING, of bicolour design set with brilliant and baguette-cut diamonds, to a reeded hoop, total diamond weight approximately 1.00 carat, ring size L. £400–£600



## 191

AN OPAL AND DIAMOND DRESS RING, the triangular opal cabochon claw-set within a surround of brilliant and baguette-cut diamonds, total diamond weight approximately 1.10 carats, ring size Y. £1,000–£1,500

## 192

AN OPAL AND DIAMOND CLUSTER BROOCH, the spray of oval clusters each centred with an opal cabochon within a surround of brilliant-cut diamonds, total diamond weight approximately 5.70 carats, length 60mm. £3,000–£4,000





### 193

A DIAMOND DRESS RING, of tapered crossover design, pavé-set with brilliant-cut diamonds and similarly-cut diamonds of brown tint, stamped '750', (diamonds untested for natural colour), total diamond weight approximately 2.80 carats, ring size M–N.

£700–£900



### 194

A DIAMOND DRESS RING, the crossover panels pavé-set with brilliant-cut diamonds and similarly-cut treatment black diamonds, total diamond weight very approximately 2.20 carats, ring size O.

£700–£900



### 195

AN ART DECO DIAMOND ETERNITY RING, set throughout with baguette-cut diamonds, mounted in platinum, total diamond weight approximately 2.70 carats, ring size Q.

£800–£1,200



### 196

A CULTURED PEARL AND DIAMOND CLUSTER RING, the cultured pearl set within a surround of single-cut diamonds, ring size I.

£400–£600



### 197

A DIAMOND ETERNITY RING, 1995, set throughout with brilliant-cut diamonds, mounted in platinum, sponsor's mark 'BRE', London hallmark, total diamond weight approximately 4.20 carats, ring size N (with sizing band).

£2,000–£3,000



### 198

A CULTURED PEARL AND DIAMOND CLUSTER RING, the baroque-shaped cultured pearl set within a surround of rose-cut diamonds, to foliate shoulders and pierced gallery, ring size G.

£500–£700



## 199 Y

A CORAL AND DIAMOND NECKLACE BY REPOSSI, the trapezoid-shaped polished white coral beads spaced by brilliant-cut diamond-set roundels, to a similarly-set clasp, signed, Italian assay mark, stamped '750', length 77cm.

£1,000–£1,500



## 200

A PAIR OF DIAMOND EAR CLIPS BY REPOSSI, the bombé plaques pavé-set with circular-cut blue gemstones and scattered with rose-cut diamonds, with a crescent to the side set with brilliant-cut diamonds and further rose-cut diamonds, signed, Italian assay mark, French assay mark, stamped '750', maker's case, length 32mm.

£3,000–£4,000

## 201 Y

A WHITE CORAL AND DIAMOND DRESS RING BY REPOSSI, the white coral cabochon within a brilliant-cut diamond mount spaced by rose-cut diamond collets, signed, stamped '750', Italian assay marks, total brilliant-cut diamond weight approximately 2.70 carats, ring size L.

£2,000–£3,000





## 202

A PAIR OF 18CT WHITE GOLD TSAVORITE GARNET AND DIAMOND EARRINGS, each set with an articulated row of brilliant-cut diamonds terminating in a target cluster of similarly-cut diamonds and circular-cut tsavorite garnets, London hallmark, *total diamond weight approximately 2.70 carats, length 40mm.* £600–£800



## 203

A PAIR OF EMERALD AND DIAMOND HOOP EARRINGS, channel-set to the front with square-cut emeralds bordered by single-cut diamonds, stamped '14K', *length 15mm.* £400–£600



## 204

AN ART DECO EMERALD AND DIAMOND RING, the step-cut emerald within a surround of single-cut diamonds, mounted in platinum and gold, stamped '18CT', *total diamond weight approximately 0.30 carat, ring size Q.* £400–£800



## 205

AN EMERALD AND DIAMOND RING, the step-cut emerald between trios of brilliant-cut diamonds, to a bifurcated 18ct gold hoop, UK hallmark, *total diamond weight approximately 0.30 carat, ring size N.* £400–£600



## 206

AN EARLY 20TH CENTURY EMERALD AND DIAMOND BRACELET, the articulated panels set with single and old brilliant-cut diamonds, with calibré-cut emerald highlights throughout, to a flexible bracelet, (one emerald deficient), stamped '18CT', *total diamond weight very approximately 2.00 carats, length 17cm.* £1,500–£2,000



## 207

A COLOMBIAN EMERALD AND DIAMOND CLUSTER BAR BROOCH, weighing 1.77 carats, bordered by brilliant-cut diamonds, stamped '15C', maker's mark 'RAC', *total diamond weight approximately 0.95 carat, brooch length 7cm.* **£2,000–£3,000**

According to a verbal report from GCS the emerald is of Colombian origin, with a moderate amount of oil in fissures (at time of testing). Verbal report number 5786-0326.



## 208

A DIAMOND DRESS RING, 1976, the hexagonal cluster set throughout with brilliant-cut diamonds, mounted in 18ct gold, UK hallmark, *total diamond weight approximately 3.00 carats, ring size O.* **£1,000–£1,500**



## 209

AN EMERALD AND DIAMOND DRESS RING, 1975, the heart-shaped cluster set with brilliant-cut diamonds and circular-cut emeralds, mounted in 18ct gold, London hallmark, *total diamond weight approximately 1.00 carat, ring size O.* **£500–£700**



## 210

A PAIR OF SAPPHIRE AND DIAMOND EAR PENDANTS, each comprising a rose-cut diamond surmount suspending a similarly-cut diamond and sapphire cabochon cluster drop, *length 20mm*. **£500–£700**



## 211

A SAPPHIRE AND DIAMOND CLUSTER RING, the oval mixed-cut sapphire claw-set within a surround of brilliant-cut diamonds, stamped '18CT PLAT', *ring size L*. **£200–£300**



## 212

AN 18CT GOLD AND DIAMOND THREE STONE RING, claw set with a graduated row of brilliant-cut diamonds, London hallmark, *total diamond weight approximately 1.45 carats, ring size O–P*. **£900–£1,200**



## 213

A RUBY AND DIAMOND FIVE STONE RING, the graduated row of circular-cut rubies and brilliant-cut diamonds to a pierced scrollwork gallery, *total diamond weight approximately 0.40 carat, ring size P½*. **£500–£600**



## 214

A DIAMOND SINGLE STONE RING, set with an old brilliant-cut diamond, stamped 'PLATINUM', numbered '1948', *diamond weight approximately 0.70 carat, ring size I–J*. **£500–£700**

## 215

A LATE 19TH CENTURY INSECT BROOCH, with ruby cabochon eyes and thorax, half-pearl abdomen and rose-cut diamond wings, to a knifewire bar with pearl terminal, mounted in silver and gold, (composite), (pearls untested), length 37mm. £500–£800



## 216

A PAIR OF ANTIQUE RUBY AND DIAMOND CLUSTER EAR STUDS, each circular-cut ruby within a surround of old brilliant-cut diamonds, in pinched collet settings, mounted in silver and gold, (later converted), total diamond weight approximately 1.60 carats, diameter 12mm. £1,000–£1,200

## 217

A LATE 19TH CENTURY GEM-SET BUTTERFLY BROOCH, the rose-cut diamond wings with oval-cut sapphire, ruby and garnet highlights, the abdomen set with graduated opal cabochons below a seed pearl thorax, mounted in silver and gold, length 45mm. £700–£900



## 218

A GEM-SET STAR BROOCH, CIRCA 1900, set with an old brilliant-cut diamond to the centre within a surround of graduated seed pearls and circular-cut garnets, mounted in gold, length 32mm. £400–£500

## 219

A RUBY AND DIAMOND BRACELET, the bicoloured links channel-set with brilliant-cut diamonds between reeded terminals, with ruby cabochons between, stamped '14k', total diamond weight approximately 1.60 carats, length 17.5cm. £1,000–£1,200





## 220

AN AMETHYST AND DIAMOND PENDANT, the cable-link chain leading to two circular-cut amethysts with a marquise-cut diamond between, suspending baguette-cut diamonds above a similarly-cut amethyst drop, total diamond weight approximately 0.90 carat, length 45cm. £300–£500



## 221

A SYNTHETIC CORUNDUM RING, the octagonal-cut purple stone between white stone set shoulders, gold mounted, ring size K.

£200–£300



## 222

A DIAMOND THREE STONE RING, set with transitional and old brilliant-cut diamonds, stamped '18CT', total diamond weight approximately 1.95 carats, ring size O.

£1,400–£1,800



## 223

A GEM-SET SUITE, the brooch of openwork abstract design, set with staggered step-cut amethysts and similarly-cut white gemstone highlights, the ear pendants en suite, brooch stamped '585', brooch length 50mm, earring length 45mm.

£700–£900



**224**

AN AMETHYST RIVIÈRE NECKLACE AND EARRINGS, the hexagonal-cut amethysts leading to a quatrefoil front set with heart-shaped amethysts, together with a pair of similarly-set earrings, necklace length 36cm, earrings 25mm.

£800–£1,200

**225**

A GEM-SET NOVELTY BROOCH BY ALABASTER & WILSON, the girl with a vari-cut gem-set bodice and skirt, holding a bunch of cabochon opal balloons, maker's mark, stamped '9CT', length 38mm.

£300–£500



## FORMERLY THE PROPERTY OF ELIZABETH TAYLOR

LOTS 226–227



226

A PAIR OF CULTURED PEARL AND DIAMOND EAR PENDANTS BY THEO FENNEL, 1992, the heart-shaped surmounts set with brilliant-cut diamonds on a hammered ground with beaded detailing, suspending detachable drops, similarly-set and terminating in baroque-shaped cultured pearl drops, mounted in 18ct gold, signed, maker's mark, UK hallmark, total diamond weight approximately 0.70 carat, length 5.5cm. £3,000–£4,000

*Provenance:* Formerly the property of **Elizabeth Taylor**.

Christie's, New York, **The Collection of Elizabeth Taylor**: Online Only Timed Auction, 3–17 December 2011, Lot 1388.

**Elizabeth Taylor** DBE (1932–2011) was a British-American actress, known for her extraordinary beauty, her acting talent, and eventful personal life.

She began her career as a child actress in the early 1940s and was one of the most popular stars of classical Hollywood cinema in the 1950s. She became the world's highest-paid movie star in the 1960s, remaining a well-known public figure

for the rest of her life. Her notable screen career spanned decades. Some of her most celebrated films included *National Velvet* (1944), *Cat on a Hot Tin Roof* (1958), *Cleopatra* (1963) and *Who's Afraid of Virginia Wolf* (1966).



Elizabeth was famously married eight times to seven men. The most turbulent and famous of these marriages were her two unions with the actor Richard Burton. She was passionate about jewellery, her three most famous jewels were all gifts from her husband Richard Burton—the Krupp Diamond (33.19 carats), the Taylor-Burton Diamond (69.42 carats) and the 16th century La Peregrina Pearl.

After her death, much of her jewellery collection was auctioned by Christie's, New York in 2011 to benefit her AIDS foundation, ETAF. The jewellery sold for the astonishing sum of \$156.8 million, setting a record for the most valuable private jewellery sale in history.

Elizabeth Taylor in a studio publicity photo in 1953

227 Y

ROTHSCHILD. A LADY'S PLATINUM AND DIAMOND-SET RECTANGULAR WRISTWATCH, REF. 1027, CIRCA 2000.

MOVEMENT: quartz.

DIAL: mother-of-pearl

CASE: platinum, diamond-set bezel, back secured by eight screws, no. 250 21 2, platinum and diamond-set clasp

SIGNED: case, dial and clasp

DIMENSIONS: length 25mm, width 19mm.

£1,000–£1,500



*Provenance:* Formerly the property of **Elizabeth Taylor**.

By repute, a gift to Elizabeth Taylor from the singer Michael Jackson.

Christie's, New York, **The Collection of Elizabeth Taylor**: Online Only Timed Auction, 3–17 December 2011, Lot 1382.

Elizabeth Taylor and the singer and performer Michael Jackson shared a unique and famously close friendship, built on a mutual understanding of growing up in the spotlight. As child stars both had endured intense public scrutiny which fostered a deep understanding and connection between them.

Their friendship began in the 1980s. Elizabeth was godmother to two of Michael Jackson's children, Paris and Prince, and her relationship with his family was very close. In 1991, when Elizabeth married her seventh husband, Larry Fortensky at Michael Jackson's Neverland Ranch, Michael escorted the bride down the aisle.

Michael expressed his admiration for Elizabeth on many occasions, including writing the song "Elizabeth, I Love You," which he performed for her 65th birthday in 1997.

Elizabeth was always a fiercely loyal defender of Michael Jackson against the media criticism and public challenges he faced. Their enduring bond and deep friendship spanned over two decades. Elizabeth remained a devoted friend until his death in 2009.

In his autobiography in 1988, *Moonwalk*, Michael Jackson included this personal quote: "Elizabeth's friendship is like the perfect jewels she owns.. indestructible and eternal."

LOS ANGELES, JANUARY 25, 1993: Actress Elizabeth Taylor and singer Michael Jackson attend the 20th Annual American Music Awards on January 25, 1993 at the Shrine Auditorium in Los Angeles, California.



Credit: Barry King / Alamy

All lots are subject to extra charges which may be viewed in Ts and Cs 3, 4, 5 and 10 at the back of this catalogue.



## 228

A PAIR OF ART DECO STYLE EARRINGS, the rose-cut diamond surmounts suspending polished green hoops, length 30mm.

£200–£300



## 229

AN ART DECO JADE AND DIAMOND RING, the jadeite cabochon claw-set between single-cut diamond shoulders, (jade untested), stamped 'PT' and '18CT', ring size L. £400–£500



## 230

A DIAMOND CLUSTER RING, of openwork design, set with brilliant and marquise-cut diamonds, stamped '18CT', total diamond weight approximately 1.70 carats, ring size N. £800–£1,000



## 231

AN EMERALD AND DIAMOND CLUSTER RING, the step-cut emerald claw-set within a radiating surround of single-cut diamonds, total diamond weight approximately 0.60 carat, ring size O. £400–£600

## 232

A CULTURED PEARL AND GEM-SET NECKLACE, the cultured pearls spaced by lapis lazuli beads between diamond-set roundels, the clasp stamped '9CT', total diamond weight approximately 1.40 carats, length 52cm.

£200–£300





## 233

A DIAMOND BROOCH AND EARRING SUITE, the pierced scrollwork brooch set with old cushion, brilliant and single-cut diamonds, the ear clips en suite, *total diamond weight very approximately 4.50 carats, length 4.5cm.* **£2,600–£3,000**



## 234

A PAIR OF DIAMOND EARRINGS, of fanned scroll design, set throughout with single-cut diamonds, *total diamond weight approximately 0.75 carat, length 24mm.* **£300–£500**

## 235

A DIAMOND BRACELET, the openwork frontspiece of scroll and foliate design, set with brilliant and single-cut diamonds, to a brick-link strap, *total principal diamond weight approximately 1.80 carats, length 16cm.* **£800–£1,200**





## 236

AN ENAMEL AND DIAMOND RING, of bombé form, with abstract polychrome enamel decoration and brilliant-cut diamond highlights, stamped '750', Italian assay marks, ring size M. £500–£600



## 237

A NOVELTY DRESS RING, of bicolour design, the bezel with matte ground and applied panther motif between brilliant-cut diamond highlights, stamped '14K', ring size L–M. £200–£300



## 238

A NOVELTY BANGLE, the bicolour cuff with hammered finish and applied with three tigers to the front, stamped '585', inner diameter 6.6cm. £1,300–£1,500

## 239 Y

AN ONYX AND MOTHER-OF-PEARL SUITE BY ROBERTO COIN, the tapered bangle inlaid with shaped onyx and mother-of-pearl panels, with brilliant-cut diamond accent and circular-cut ruby highlight to the interior; together with a ring and pair of ear clips en suite, signed, stamped '750', Italian assay marks, ring size K. [£6,000–£8,000](#)





## 240

A 19TH CENTURY ENAMEL AND GEM-SET PENDANT ON CHAIN, the quatrefoil surmount above a pear-shaped drop, with blue enamel and scrolling foliate decoration throughout, set with a pear-shaped topaz and ruby and green gemstone highlights, suspended by a fancy-link chain, mounted in gold, *pendant length 45mm.* £1,000–£1,200



## 241

A LATE 19TH CENTURY SAPPHIRE AND DIAMOND CRESCENT BROOCH, the graduated series of oval and cushion-shaped sapphires spaced by pairs of old brilliant-cut diamonds, mounted in gold, *total diamond weight approximately 0.85 carat, length 30mm.* £500–£700



## 242

A LATE 19TH CENTURY DIAMOND CRESCENT BROOCH, set throughout with old brilliant-cut diamonds, mounted in silver and gold, *total diamond weight approximately 2.50 carats, length 40mm.* £1,000–£1,500



## 243

AN ANTIQUE GEM-SET RING, the oval bezel with applied textured gem-set motif, mounted in gold, (two seed pearls deficient), *ring size L-L½.* £150–£200

## 244

AN ANTIQUE GOLD AND ENAMEL LONG CHAIN, composed of hollow baton-shaped links with monochrome enamel decoration throughout, probably Swiss, *length 59cm.* £2,000–£3,000

According to a PMI test on the XRF analyzer the chain is testing as 18ct gold.





## 245

A LATE 19TH CENTURY BURMESE RUBY AND DIAMOND CRESCENT BROOCH, set throughout with graduated cushion-shaped rubies and rose-cut diamonds, mounted in silver and gold, length 35mm. £1,000–£1,500

According to a verbal report from GCS the rubies are of Burma (Mogok) origin, with no indications of heating. Verbal report number 5785-3996.

## 246

AN EARLY 20TH CENTURY RUBY AND DIAMOND BROOCH, the pierced circlet set throughout with circular-cut rubies and rose-cut diamonds, mounted in silver and gold, diameter approximately 27mm. £400–£600



## 247

A 19TH CENTURY DOUBLE HEART RING, the heart-shaped clusters of old brilliant and single-cut diamonds beneath a similarly-set bow surmount, and centred with a cushion-shaped ruby or sapphire, mounted in silver and gold, stamped '18', total diamond weight approximately 0.95 carat, ring size R½. £1,500–£2,000



## 248

AN ANTIQUE RUBY AND DIAMOND BROOCH, composed of three knife-edge bars spaced with graduated mixed-cut rubies and old single-cut diamonds, with unassociated early 20th century Cartier brooch case, length 8.8cm. £500–£700

249

A PAIR OF 18CT WHITE GOLD SAPPHIRE AND DIAMOND CLUSTER EAR PENDANTS, the oval-mixed-cut sapphires set within brilliant-cut diamond surrounds, London hallmark, *total diamond weight approximately, 2.40 carats, length 5cm.*

£800–£1,200



250

A PAIR OF SAPPHIRE EAR PENDANTS, of cluster drop design, set with circular-cut sapphires and single-cut white gemstones, *length 27mm.*

£150–£200



251

A DIAMOND THREE STONE RING, set with a marquise-cut diamond between pear-shaped diamonds, mounted in platinum, UK hallmark, *total diamond weight approximately 1.55 carats, ring size N.*

£1,000–£1,500



252

A SAPPHIRE TWO STONE RING, the circular-cut sapphires claw-set between crossover shoulders, stamped '18CT', *ring size K½.*

£300–£500

According to a verbal test from GCS, the sapphires are of Basaltic origin with no indications of heating. Verbal report number 5785-3926.



253

A DIAMOND SINGLE STONE RING, claw-set with a brilliant-cut diamond, stamped '14K', *diamond weight approximately 0.45 carat, ring size M–N.*

£400–£600



## 254

A DIAMOND AND AQUAMARINE NECKLACE, the front set throughout with brilliant-cut diamonds, suspending a central pendant of pear-shaped outline, with inner conforming hoop enclosing a round-cut aquamarine drop, the back chain of beaded links, white gold mounted, stamped '750', total diamond weight approximately 3 carats, length approximately 42cm. £1,500–£2,000

## 255

AN ART DECO SAPPHIRE LINE BRACELET, the articulated bracelet set throughout with french-cut sapphires, mounted in platinum, length 18.5cm. £400–£600





## 256

AN 18CT GOLD 'LOVE' BANGLE BY CARTIER, the polished bangle with screwhead motifs, signed 'Cartier', numbered 'RF5093', size 18, stamped 'Au750', Swiss assay mark, international convention mark, maker's case with screwdriver, inner dimensions 5 x 6cm. £2,000–£3,000

Accompanied by a Cartier guarantee dated 3 September 2022.



## 257

A 'TRINITY' NECKLACE BY CARTIER, the tricoloured hoops suspended from a black cord, signed, serial number 'IY9478', stamped '750', diameter 22mm. £1,000–£1,200



## 258

AN 18CT WHITE GOLD 'LOVE RING' BY CARTIER, the polished band with screwhead motifs, signed, numbered 'NEC845', Swiss assay mark, stamped '750', maker's case, ring size T. £400–£600

## 259

A DIAMOND 'LOVE' NECKLACE BY CARTIER, the faceted double chain leading to a hoop pendant with 'LOVE' and screwhead motifs, with two brilliant-cut diamond highlights, signed, maker's mark 'PGI', stamped 'Au750', numbered, length 41.5cm. **£500–£700**



## 260

A PAIR OF CULTURED PEARL EARRINGS BY CARTIER, the 'Trinity' surmounts suspending cable-link chains each terminating in a cultured pearl of black or white tint, signed, dated '1989', unassociated case by Cartier, length 32mm. **£1,000–£1,500**

## 261

A 9CT GOLD BRACELET, of textured brick-link design, maker's mark 'PP&P', UK hallmark, length 18.5cm. **£2,600–£3,000**



# A PRIVATE COLLECTION OF ROYAL JEWELS

LOTS 262–266



**THE YORK ROSE BROOCH**

**262**

A ROYAL PRESENTATION FROSTED ROCK CRYSTAL AND DIAMOND BROOCH, BY GARRARD & CO., CIRCA 1923, the carved rose centred with rose-cut diamond initials 'EA', mounted in platinum, cased by Plante, 12 Bury Street, London SW, diameter 25mm. £3,000–£5,000

*Provenance:* From a Private Collection.

This brooch is one of the eight royal presentation brooches, made by Garrard & Co., the Crown jewellers, for Prince Albert, Duke of York (later George VI) and given to the eight bridesmaids who attended The Lady Elizabeth Bowes-Lyon (later Queen Elizabeth the Queen Mother) on the occasion of their marriage in 1923.

Original recipient of the brooch unknown.





The wedding of Prince Albert, Duke of York (the future King George VI) to the Lady Elizabeth Bowes-Lyon (later Queen Elizabeth The Queen Mother) took place on 26 April 1923 at Westminster Abbey. As the second son of King George V and Queen Mary, Albert (or 'Bertie' as he was known to his family and close friends) was not expected to inherit the throne, allowing him a more private life until his elder brother Edward VIII abdicated.

Elizabeth was the youngest daughter of Claude Bowes-Lyon, Lord Glamis, later the 14th Earl Strathmore and Kinghorne, and his wife Cecilia Cavendish-Bentinck. She reputedly turned down Bertie's marriage proposal three times before finally accepting in January 1923. Their union proved to be one of the happiest royal marriages in history. When propelled onto the throne in 1936 after the abdication of Edward VIII, as King George VI and Queen Elizabeth their steadfast service would inspire the nation and Commonwealth through the dark years of the Second World War.

On her wedding day, the Duchess of York was accompanied down the aisle of Westminster Abbey by her eight bridesmaids: Lady Mary Cambridge, the Hon Diamond Harding, Lady Mary Thynne, the Hon Elizabeth Elphinstone, Lady May Cambridge, Lady Catherine Hamilton, Miss Betty Cator and the Hon Cecilia Bowes-Lyon. Though some were of royal and aristocratic stock, they were mostly chosen from her large group of close friends, rather than from the Duke's royal relations.

The Duke of York's gift to each of the bridesmaids was an exquisite carved rock crystal brooch in the shape of the White Rose of York, alluding to the Duke's title, each centred with diamond set initials EA - for Elizabeth and Albert - and surmounted by a coronet. The bridesmaids proudly wore their brooches at the wedding itself, pinned centrally to the bodices of their ivory chiffon dresses trimmed with Nottingham lace, and a green sash at the waist.

These York Rose brooches have rarely been seen in public since 1923.

In 1990, the Exhibition held at the Guildhall in Windsor, celebrating Queen Elizabeth The Queen Mother's 90th birthday, included the brooch given to Lady May Abel Smith née Cambridge (1906–1994).

In 2005, the 18th Earl of Strathmore displayed the brooch given to his grandmother Elizabeth 'Betty' Bowes-Lyon née Cator (1899-1959) for a BBC programme 'Britain's Royal Weddings 1923–2005'.

**Literature:**

Wier, Williams, Gristwood, Borman: *The Ring and the Crown*, pub. Hutchinson London, p.104.

Roberts, J: *Five Gold Rings*: pub. Royal Collection Enterprises Ltd, London 2007, p. 87.

BBC: *British Royal Weddings 1923–2005* (DVD) BBC Wales, Episode 1, 2006.



## 263

A GEORGE V ROYAL PRESENTATION DIAMOND AND ENAMEL STICK PIN, the terminal with diamond-set Royal cypher, encircled by blue enameled garter with motto 'HONI SOIT QUI MAL Y PENSE', with the Imperial crown surmount in red and green enamels, mounted in gold, cased by R. & S. Garrard & Co., length 6.4cm. £600–£800

## 264

A PAIR OF GEORGE VI ROYAL PRESENTATION SILVER AND ENAMEL CUFFLINKS, the blue enameled panels with conjoined Royal cypher of George VI and Elizabeth beneath Imperial crown surmount of red enamel, with chain connectors, cased by Plante, 12 Bury Street, London SW, panel lengths 17mm. £600–£800



*Provenance:* A gift from George VI by repute presented to Rear Admiral George Simpson. The lot includes a personal invitation given to Rear Admiral Simpson's wife to attend H.M. Queen Elizabeth II's Afternoon Party at the Palace of Holyroodhouse on Friday 27 June 1952. .

### Rear-Admiral George Walter Gillow Simpson CB CBE (1901–1972)

Educated at the Royal Naval College, Osborne and the Royal Naval College, Dartmouth, Simpson was commissioned into the Royal Navy in 1917. He served in the Grand Fleet (HMS *Superb*) late in World War I and in 1921 joined the Royal Navy Submarine Service. Between 1921–1939 he held various appointments and postings including the China Station, studying the Russian language in Estonia and doing service on HMS *Nelson* between 1929–1931. He became Commanding officer of the submarine HMS L27 in 1935 and of the submarine HMS *Porpoise* in August 1938. As Commander of the 10th Submarine Flotilla, based at Malta in January 1941, his role was to prevent enemy supplies reaching North Africa. He went on to be Commodore Western Approaches in April 1943. Simpson became Chief of the New Zealand Navy Staff in 1948, Flag Officer Germany in 1951 and Flag Officer Submarines in 1952. In this role he was dual-hatted as NATO Commander Submarine Force Eastern Atlantic. He was awarded Companion of the Order of the Bath, and Commander of the Order of the British Empire. He died age 70 years, and is buried at Maunu Lawn Cemetery in Whangarei, New Zealand.



## 265

A PAIR OF ELIZABETH II ROYAL PRESENTATION 9CT GOLD AND ENAMEL CUFFLINKS BY PAUL LONGMIRE, 1991, the cut-cornered rectangular panels with the Royal cypher in blue enamel, beneath a red enameled crown, with chain connectors, Birmingham hallmark, maker's mark, maker's case, length 15mm. £500–£700



## 266

A 9CT GOLD ROYAL PRESENTATION MEDALLION BY CROPP & FARR FOR CARTIER, circular with beaded edge, engraved to the front with Elizabeth II Royal cypher beneath St Edward's crown, suspended from a 9ct gold fancy-link chain, medallion signed 'Cartier', London hallmark for 1958, chain with Birmingham hallmark for 1957, maker's marks 'B & S', cased by Cartier, medallion length 25mm, bracelet length 18.3cm. £600–£800

*Provenance:* Presented to Miss Peggy Gladys Hoath RVM by the late Queen Elizabeth II in thanks for her work during Her Majesty's tour of Canada in 1959.

### **Peggy Hoath (1929–2018)**

Peggy first came to the attention of Margaret 'Bobo' MacDonald, a nursemaid and personal dresser to Queen Elizabeth, and one of her closest confidantes.

At the time Peggy was a seamstress in the atelier of royal couturier Sir Norman Hartnell. The Queen borrowed Peggy for the duration of the Canadian tour as, being pregnant with Prince Andrew at the time, her outfits were in constant need of subtle adjustments. Peggy proved so valuable to the Queen, that she asked her to stay on.

Peggy spent the remainder of her working life in royal service. She was one of the few surviving staff to have worked with the young Queen Elizabeth, remaining at her side for 35 years. She was awarded the Medal of the Royal Victorian Order in silver (RVM) in the 1985 New Year Honours List and a Bar to the Royal Victorian Order in January 1995.

From the 1920s, Cropp & Farr were suppliers of jewels to Cartier.



## 267

A PAIR OF DIAMOND HOOP EARRINGS, of bicolour design, each shaped hoop with matte ground beneath a brilliant-cut diamond cross, total diamond weight approximately 0.55 carat, length 20mm. **£1,000–£1,200**



## 268

A PAIR OF 'GRAFFITI X' EAR STUDS BY PALOMA PICASSO FOR TIFFANY & CO., of polished form, signed, stamped '750', maker's box, length 13mm. **£320–£360**



## 269

A PAIR OF DIAMOND SET BOW STUDS, realistically modelled and set throughout with rose-cut diamonds, length 13mm. **£100–£150**



## 270

A PAIR OF 18CT GOLD 'HAPPY DIAMOND' EAR CLIPS BY CHOPARD, of crossover design, set with brilliant-cut diamonds and centred with a heart-shaped glazed compartment revealing a similarly-cut 'floating' diamond, signed, numbered '2796810', European convention marks, maker's case, total diamond weight approximately 0.40 carat, length 25mm. **£1,300–£1,500**



### 271

A 'HAPPY DIAMOND' PENDANT BY CHOPARD, the glazed heart revealing a 'floating' brilliant-cut diamond, suspended from an 18ct gold cable-link chain, signed, numbered, European convention mark, pendant length 16mm, chain length 42.5cm.

£600–£800



### 272

AN 18CT WHITE GOLD AND GEM-SET 'COMÈTE' PENDANT BY CHANEL, CIRCA 1998, the polished star bezel-set with vari-cut sapphires and brilliant-cut diamonds, suspended by an 18ct white gold belcher-link chain, signed 'CHANEL', numbered '7F616', London import marks, pendant length 20mm.

£800–£1,000



### 273

A DIAMOND SINGLE STONE RING, the brilliant-cut diamond in a square setting to a shaped hoop with engraved decoration, stamped 'PLAT', diamond weight approximately 1.00 carat, ring size O.

£1,800–£2,200

### 274

A SILVER 'CHAINE D'ANCRE' BRACELET BY HERMÈS, 2007, with T-bar terminal, signed, maker's mark 'HGB', UK hallmark, French import mark, length 22cm.

£600–£800





## 275

A MID 20TH CENTURY BIRD BROOCH, FRENCH, realistically modelled as a bird perched on a branch, with woven body and circular-cut ruby eye, French assay mark, indistinct maker's mark, length 6cm. £600-£800

According to a PMI test on the XRF analyzer the brooch is testing as 18ct gold.



## 276

A MID 20TH CENTURY GEM-SET SPRAY BROOCH, the wirework leaves set with brilliant and single-cut diamonds, with highlights of circular-cut rubies or sapphires, total diamond weight approximately 1.25 carats, length 40mm. £600-£800

According to a PMI test on the XRF analyser the brooch is testing as 14ct gold.



## 277

A MID 20TH CENTURY RUBY AND DIAMOND SPRAY BROOCH, realistically modelled, the flowerheads set with circular-cut rubies or brilliant-cut diamonds, with single-cut diamond leaves and calibr -cut ruby stem, total diamond weight approximately 2.40 carats, length 6.5cm. £800-£1,200

## 278

A MID 20TH CENTURY RUBY AND DIAMOND SPRAY BROOCH, of openwork foliate design, set with circular-cut rubies, brilliant and single-cut diamonds, stamped '18C', total diamond weight approximately 1.30 carats, length 5.7cm. £800-£1,000





## 279

AN ART DECO PEARL, DIAMOND, RUBY AND PEARL NECKLACE, comprising multi rows of ruby beads, strung together with pearl accents, with black enamel caps edged with brilliant-cut diamonds, the frontispiece centred with a diamond set hoop suspending a ruby and pearl tassel below, the clasp of conforming design, (pearls untested), *total diamond weight approximately 3.00 carats, necklace length 44cm.*

£2,000–£2,600

Accompanied by a report from The Gem & Pearl Laboratory stating that a sample of rubies were tested and found to be natural, the majority of Burmese origin, with no evidence of heat treatment. From none to significant evidence of clarity enhancement. Report number 26318, dated 23 August 2025.



## 280

AN EARLY 20TH CENTURY ENAMEL PENDANT, the central pale blue guilloché enamel panel with applied latticework detail, with diamond highlights, edged by seed pearls and with diamonds to the cardinal points, the reverse inset with a later silver gilt panel, *length including bale 48mm, diameter 3.8mm.*

£600–£800



## 281

AN ENAMEL AND GEM-SET BROOCH, converted from an early 20th century jewel, the hinged blue guilloché enamel panel with applied diamond foliate motif and opening to reveal an inner compartment, the whole enclosed within a seed pearl surround, *diameter 30mm.*

£300–£500



## 282

A DIAMOND SINGLE STONE RING, claw-set with a brilliant-cut diamond, *weighing 1.42 carats, the band stamped '750', ring size L.*

£1,800–£2,000

Accompanied by a report by GCS stating that the diamond is F colour, SI1 clarity. Report number 57853856, dated 29 September 2025.



## 283

AN EARLY 20TH CENTURY DIAMOND RING, of pierced bombé form, set with an old brilliant-cut diamond and rose-cut diamonds to the surround, mounted in platinum, *principal diamond approximately 0.90 carat, shank cut.*

£400–£600



## 284

TWO ANTIQUE GEM-SET RINGS, comprising a late 19th century five stone ring set with a graduated row of cushion-cut sapphires, together with an early twentieth century pearl and diamond cluster ring with calibré-cut sapphire accents, mounted in gold and platinum respectively, (pearl untested), *ring size P and P½. (2)*

£500–£700

## 285

AN EARLY 20TH CENTURY DIAMOND BOW BROOCH, realistically modelled and set throughout with old brilliant, single and transitional-cut diamonds, the scalloped edge set with calibr -cut sapphire highlights, mounted in platinum, *total diamond weight very approximately 6.00 carats, length 5.5cm.* **£2,000–£3,000**



## 286

AN EARLY 20TH CENTURY SAPPHIRE AND SEED PEARL BROOCH, the circular-cut sapphire millegrain-set between seed pearl highlights and centred within a pierced lozenge-shape surround, stamped '15CT', *length 5.5cm.* **£100–£150**



## 287

A LATE 19TH CENTURY SAPPHIRE AND DIAMOND BROOCH, the tapered bar set throughout with rose-cut diamonds and centred with a mixed-cut sapphire between trios of old brilliant-cut diamonds, mounted in silver and gold, *total old brilliant-cut diamond weight approximately 0.40 carat, length 8cm.* **£500–£700**

## 288

AN EARLY 20TH CENTURY NATURAL PEARL AND DIAMOND BRACELET, the openwork frontispiece of cluster design, set with a pearl and old brilliant-cut diamonds, extending to rose-cut diamond-set spacers and plain polished links, mounted in platinum, (replacement clasp), *total diamond weight approximately 1.20 carats, length 16.5cm.* **£500–£700**

According to a verbal report from GCS, the central pearl is testing as natural saltwater origin. Verbal report number 5785-3862.





## 289

A DIAMOND RIVIÈRE NECKLACE, formed of graduated flowerhead clusters set with brilliant-cut diamonds, stamped '18K', total diamond weight approximately 30.00 carats, length 40cm.

£6,000–£8,000



## 290

**AN ART DECO DIAMOND RING**, the central old brilliant-cut diamond within a hexagonal surround of similarly-cut diamonds, mounted in platinum, numbered 'R930', principal diamond weight approximately 1.60 carats, ring size L. £3,000–£5,000

*Provenance:* This ring was given by Lt Cdr A. C. G. Driscoll RN to Miss Josephine Elizabeth Browne on their engagement in 1959.



## 291

A PAIR OF GOLD AND GREEN ENAMEL CUFFLINKS BY CARTIER, CIRCA 1960, the reeded bead terminals decorated with green guilloché enamel, to swivel fittings, signed 'Cartier', numbered 'P967, P2296, N6470', stamped '750', maker's case, bead diameter 14mm. **£800–£1,200**



## 292

A GEM-SET RING BY CARTIER, CIRCA 1990, of bombé form, centred with a chrysoprase cabochon within a surround of graduated brilliant-cut diamonds, with carved lapis lazuli shoulders and reeded gallery, stamped '750', signed 'Cartier', stamped '1990', numbered '917015', French assay mark, maker's case, ring size L-L½. **£1,000–£1,500**

## 293

A FANCY-LINK BRACELET, the broad strap of woven design, stamped '18K' and '750', length 19.5cm. **£4,000–£5,000**





## 294

A TURQUOISE AND DIAMOND PENDANT MOUNTED BY CARTIER, the turquoise matrix plaque with applied trios of brilliant-cut diamonds, within a similarly-set scalloped surround, signed 'MONTURE Cartier', numbered, stamped '750', total diamond weight approximately 2.85 carats, length 8.3cm. **£3,000–£4,000**

*Provenance:* The pendant was a private commission from Cartier, the customer providing the turquoise panel.

## 295

AN 18CT WHITE GOLD AND DIAMOND 'LOVE' BANGLE BY CARTIER, with screwhead motifs, set with four brilliant-cut diamonds, signed 'Cartier', serial number 'CZC439', size 16, Swiss assay mark, European convention marks, original case with screwdriver and outer box, total diamond weight approximately 0.35 carat, inner diameter 4.7mm. **£4,000–£5,000**

*Provenance:* Purchased from Cartier at Harrods in 2017.





**296**

AN ART DECO DIAMOND DOUBLE CLIP BROOCH, of pierced scroll design, set with old brilliant, single and brilliant-cut diamonds, mounted in platinum, *total diamond weight approximately 6.00 carats, length 6cm.* £2,000–£2,600



**297**

A DIAMOND SINGLE STONE RING, the brilliant-cut diamond, *weighing 2.00 carats, in a raised claw setting, ring size K.* £6,000–£7,000

Accompanied by a report from E.D.R. stating the diamond is G colour, VS2 clarity. Report number A739647, dated 18 July 2017.



## 298

**AN ANTIQUE EMERALD AND DIAMOND BROOCH AND EAR CLIP SUITE**, the stylised feather set throughout with old brilliant and cushion-cut diamonds, with a central cushion-shaped emerald, *weighing 1.80 carats*, the ear clips en suite and with detachable drops, one set with a pear-shaped briolette-cut emerald and the other with a similarly-cut paste, beneath rose-cut diamond caps, (composite), *total diamond weight approximately 5.40 carats, brooch length 6.5cm.* **£5,000–£7,000**

According to a verbal report from GCS, the cushion-shaped emerald is of Colombian origin, with minor amount of oil in fissures (at time of testing). Verbal report number 5786-0272.

According to a verbal report from GCS, the briolette-cut emerald is of Colombian origin, with moderate amount of oil in fissures (at time of testing). Verbal report number 5786-0273.

## 299

A **DIAMOND RING**, the brilliant-cut diamond *weighing 2.20 carats*, in a raised four claw setting between tapered baguette-cut diamond shoulders, stamped 'PLAT', ring size J. £6,000–£8,000

According to a report from GCS, the diamond is grading as H colour and VS2 clarity. Report number 5785-3858, dated 26 September 2025.



## 300

A PAIR OF SAPPHIRE EAR STUDS RETAILED BY THEO FENNELL, the circular mixed-cut sapphires in four claw settings, unsigned, retailer's case, *diameters 8.4mm*. £4,000–£6,000

*Provenance:* Purchased from Theo Fennell in 2007.

Accompanied by a copy of a report from The Gem Testing Laboratory of Great Britain for one sapphire, *weighing 2.87 carats*, stating no evidence of heat treatment observed. Report number 0126805, dated 24 January 2007.





### 301

**AN AQUAMARINE AND DIAMOND BROOCH**, the mixed-cut aquamarine with old brilliant-cut diamonds to the cardinal points, *total diamond weight approximately 1.45 carats, length 35mm.*

**£1,500–£2,000**



### 302

**AN EARLY 20TH CENTURY DIAMOND BROOCH**, the pierced panel of curved outline and set throughout with old brilliant, transitional and single-cut diamonds, mounted in platinum, *total diamond weight approximately 5.15 carats, length 5cm.* **£2,000–£3,000**



### 303

AN AQUAMARINE AND DIAMOND BROOCH BY ROY CECIL KING, CIRCA 1995, the hexagonal fancy-cut aquamarine weighing 3.25 carats, within a surround of baguette and calibré-cut diamonds, unsigned, total diamond weight approximately 3 carats, length 21mm. £2,000–£3,000

*Provenance:* Accompanied by a letter of Authority from Roy King Jewels Limited confirming the maker of the brooch to be ROY CECIL KING.

Born in Kentish Town in 1913, **Roy Cecil King** began his career at 14 as an apprentice goldsmith and diamond mounter to jewellers M J Greengross in Hatton Garden.

During the War, King worked as a planning engineer on the production line of the Hurricane, eventually heading up a 100-strong department at De Havilland. There he used machine tool techniques which he would later apply with great success to jewellery and watch manufacture.

In 1965 King set up his own factory in Watford. He soon began to concentrate on watch manufacture, or, as he preferred to describe it, 'jewellery that tells the time'. In 1960, King signed an agreement with Bueche-Girod, incorporating their Swiss made movements into his pieces, leaving him free to focus entirely on the exterior of his watches.

The Roy King workshop won two first prizes, a second and a third at the British Modern Jewellery Exhibition in 1961. The winning pieces are now in the permanent collection of Goldsmiths' Hall.

### 304

AN EARLY 20TH CENTURY AQUAMARINE AND DIAMOND CLUSTER RING, the cushion-shaped aquamarine within a surround of old single-cut diamonds, mounted in platinum, ring size J–K. £300–£500





### 305

A PAIR OF CULTURED PEARL AND DIAMOND EAR CLIPS, each set with a cultured pearl within a partial wraparound surround of brilliant-cut diamonds, stamped '750' and '18Kt', Italian assay marks, *total diamond weight approximately 3.00 carats, length 22mm.* **£1,200–£1,500**



### 306

A SAPPHIRE AND DIAMOND CLUSTER RING, the oval mixed-cut sapphire within a surround of brilliant and marquise-cut diamonds, *total diamond weight approximately 1.35 carat, ring size L½ –M.* **£1,200–£1,500**



### 307

A DIAMOND DRESS RING, the flowerhead set with pear-shaped, brilliant and step-cut diamonds, *total diamond weight approximately 2.40 carats, ring size L–L½.* **£1,000–£1,500**

### 308

A SAPPHIRE AND DIAMOND SPRAY BROOCH, CIRCA 1950, the bombé knot of flowerhead design and set with brilliant and calibr -cut diamonds within a surround of circular-cut sapphires, issuing similarly-set ribbons to either side, French assay marks, total diamond weight very approximately 9.00 carats, length 8.5cm. £6,000–£8,000





### 309

A DIAMOND FLEUR-DE-LYS BROOCH, CIRCA 1890, set with old brilliant and rose-cut diamonds, mounted in silver and gold, total diamond weight approximately 3.50 carats, length 35mm. **£2,400–£3,000**



### 310

A LATE 19TH CENTURY PEARL AND DIAMOND PENDANT, the lozenge-shaped pendant set throughout with pearls, old brilliant and old cushion-cut diamonds, with similarly-set drop below, mounted in silver and gold, cased by Tessier, total diamond weight approximately 3.90 carats, length 6.5cm. **£2,800–£3,600**

According to a verbal report from GCS, the pearls are of natural saltwater origin. Verbal report number 5786-0456.

### 311

AN EARLY 20TH CENTURY DIAMOND RING BY JABEL, the cushion-cut diamond, weighing 3.85 carats, in a rubover setting with pierced gallery below, between scroll engraved shoulders channel-set with old brilliant-cut diamonds, mounted in palladium, signed 'JABEL', stamped 'PALL', ring size K.

£16,000–£20,000

Accompanied by a report from GCS stating the cushion-cut diamond is I colour, VS2 clarity. Report number 5786-0075, dated 23 October 2025.

Jabel was founded in 1916 by Jack J. Abelson in Newark, New Jersey, and specialised in die-struck jewellery. The company was known for its outstanding quality and is still in existence today.





### 312

A **DIAMOND FRINGE NECKLACE**, the mesh-link neck chain with polished flowerhead motifs and suspending a knifewire fringe of graduated brilliant-cut diamonds, Italian maker's mark, stamped '750', principal diamond weight 2.78 carats, remaining total diamond weight approximately 14.40 carats, length 44cm.

£18,000–£26,000

According to a report from GCS the principal diamond weighs 2.78 carats, is O–P colour and VVS1 clarity. Report number 5786-0327, dated 23 October 2025.



### 313

A PAIR OF DIAMOND EAR STUDS, each brilliant-cut diamond in a flowerhead petal surround, stamped '18CT', total diamond weight approximately 2.20 carats, length 12mm. £2,800–£3,200



### 314

A DIAMOND SINGLE STONE RING, claw-set with a cushion-cut diamond, weighing 2.62 carats, stamped 'k18', ring size O. £3,000–£5,000

According to a verbal report from GCS, the diamond is K colour and SI2 clarity. Verbal report number 5786-0380.



### 315

A DIAMOND SAUTOIR, the faceted treated black diamonds spaced by single-cut diamond roundels, with tassel terminals each beneath a bell-shaped pierced diamond cap, length 100cm. £2,000–£3,000



### 316

A SAPPHIRE AND DIAMOND CLUSTER RING, of flowerhead design, set with a circular-cut sapphire and old brilliant-cut diamonds, with polished petals, total diamond weight approximately 0.95 carat, ring size L–M. £400–£600

According to a PMI test on an XRF Analyzer the metal is testing as 18ct gold.



### 317

A DIAMOND KNOT RING, the stylised knot set with brilliant-cut diamonds, stamped '750', Italian assay marks, total diamond weight approximately 1.00 carat, ring size Q½. £600–£800



### 318

A DIAMOND CROSSOVER BRACELET, the sprung cuff set with a continuous row of brilliant-cut diamonds, stamped '750', Italian assay mark, total diamond weight approximately 4.50 carats, inner width approximately 5.5cm. £3,400–£4,000

### 319

A DIAMOND FLOWER CLIP AND FOB WATCH, CIRCA 1950, the bouquet issuing three rotating flowerheads, the whole set throughout with brilliant, baguette and single-cut diamonds, suspending a later fob watch below, with graduated brilliant-cut diamond surround, case stamped 'ALL PLAT', total diamond weight approximately 2.70 carats, length 6.2cm. £800–£1,000



### 320

A DIAMOND PENDANT, the openwork cluster of brilliant and marquise-cut diamonds beneath a pear-shaped diamond surmount, partial UK hallmark, total diamond weight approximately 3.20 carats, length 28mm. £700–£900



### 321

A RUBY AND DIAMOND CLIP, CIRCA 1950, the ribbon spray with applied flowerhead, set throughout with brilliant, baguette and single-cut diamonds, with two circular-cut ruby highlights, total diamond weight approximately 4.10 carats, length 5.5cm. £2,200–£3,000



### 322

**AN ART DECO DIAMOND AND COLOURED DIAMOND RING**, the pierced rectangular panel of geometric design, collet-set with two old brilliant-cut diamonds of yellow and pink tint, centred within a millegrain surround of single-cut diamonds, (diamonds untested for natural colour), *total diamond weight approximately 0.80 carat, ring size N½*. **£3,000–£3,000**



### 323

**A DIAMOND THREE STONE RING**, set with a combination of old brilliant and transitional cut diamonds in boxed-claw settings, *total diamond weight approximately 2.40 carats, ring size P–P½*. **£1,200–£1,500**



### 324

**AN ART DECO EMERALD AND DIAMOND DRESS RING**, the three cushion-shaped emeralds set between old brilliant-cut diamond shoulders, mounted in platinum, *total diamond weight 1.20 carats, ring size L½*. **£800–£1,200**

## 325

A COLOMBIAN EMERALD AND DIAMOND RING, the step-cut emerald, weighing 7.21 carats, between tapered baguette-cut diamond shoulders, mounted in 18ct gold, UK hallmark, ring size I-J.  
£6,000–£8,000

Accompanied by a report from GCS stating that the emerald is of Colombian origin, with evidence of insignificant amount of oil in fissures (at time of testing). Report number 5786-0325, dated 23 October 2025.





### 326

A RUBY AND DIAMOND SPRAY BROOCH, of openwork bombé form, set throughout with circular-cut rubies, brilliant and marquise-cut diamonds, Italian assay mark, stamped '750', total diamond weight approximately 4.70 carats, length 6.5cm. £2,200–£3,000



### 327

A PAIR OF DIAMOND CLUSTER EAR STUDS, the pear-shaped panels with scalloped outline and set throughout with old brilliant and single-cut diamonds, total diamond weight approximately 2.10 carats, length 15mm. £800–£1,000



### 328

A PAIR OF CULTURED PEARL AND DIAMOND EARRINGS, converted from an early 20th century jewel, the pierced panels set throughout with a combination of old-brilliant, transitional and single-cut diamonds, with cultured pearl highlight, total diamond weight approximately 5.50 carats, length 30mm. £1,200–£1,500



### 329

A MID 20TH CENTURY DIAMOND BROOCH, the stylised spray set with staggered brilliant and marquise-cut diamonds, with graduated baguette-cut diamond stems, stamped 'OR', total diamond weight very approximately 12.00 carats, length 5cm. £3,000–£4,000

### 330

A SMALL COLLECTION OF 19TH CENTURY CHARMS AND FOBS, to include a gold gloved hand, two hardstone seal fobs, a gold heart with turquoise cabochon and glazed compartment, a carved hardstone memorial fob, etc. (Quantity) **£200–£300**

### 331

A SMALL COLLECTION OF ANTIQUE JEWELLERY, to include a silver and enamel brooch by Charles Horner, a moonstone cabochon stick pin, a pearl and enamel lozenge-shaped gold brooch, a gold propelling pencil, two onyx mourning studs, etc., *various lengths*. (Quantity) **£300–£500**

### 332

A COLLECTION OF 19TH CENTURY TURQUOISE JEWELLERY, comprising a pendant pavé-set with turquoise cabochons, with ropetwist detailing and tapered drop below, together with a pair of ear pendants and ring en suite, *ring size M*. **£100–£200**

### 333

A NATURAL PEARL STICKPIN AND A PAIR OF DRESS STUDS, mounted in gold, the studs with curb-link chain connector, cased by Carrington & Co., *various lengths*. **£300–£500**

According to a verbal report from GCS, the three pearls are testing as natural saltwater origin. Verbal report number 5785-3995.

### 334

A COLLECTION OF ANTIQUE JEWELS, comprising an agate bar brooch carved to depict a shell centred with a diamond highlight as a 'pearl', a 19th century amethyst and seed pearl brooch, a circular openwork amethyst and seed pearl pendant, and a pearl set trefoil pendant with sapphire highlights, *various marks and sizes*. (4) **£600–£800**

### 335

A SMALL COLLECTION OF ANTIQUE JEWELS, comprising a shell cameo brooch, a silver brooch, a gold-mounted hardstone pendant and two gem-set bar brooches, *various lengths*. (5) **£200–£300**

### 336

A SILVER BRACELET BY TIFFANY & CO., the silver belcher-link bracelet chain with heart-shaped tag, signed, London hallmarks, together with a foliate dress ring by Thomas Sabo set with white gemstones, signed, stamped '925', maker's cases, *bracelet length 18cm, ring size J½*. (2) **£100–£150**

### 337

A COLLECTION OF JEWELS, comprising a Georg Jensen silver bird brooch designed by Arno Malinowski, numbered '239', import mark for London 1959, (lacking pin), an unmounted Derbyshire Ashford marble oval plaque, depicting a floral spray, a hardstone set lyre brooch, a Victorian gilt metal paste brooch, a tortoiseshell piquéwork domed brooch, a 9ct gold chain, a 9ct gold watch head and a silver cross pendant on chain, *various dimensions*. (Quantity) £300–£500

### 338

FOUR DIAMOND RINGS, one 19th century mourning ring set with two old brilliant-cut diamonds in a pear-shaped surround of black enamel, mounted in gold, together with three old brilliant-cut diamond rings, *total diamond weight approximately 1.70 carats, ring sizes H–K*. £500–£700

### 339

TWO PAIRS OF 19TH CENTURY DROPS, the first pair designed as a pair of gold acorns, the second pair each set with a circular *Corallium Rubrum* or blue hardstone cabochon, with ropetwist detailing, *lengths 17mm and 20mm*. £150–£200

### 340

THREE EARLY 20TH CENTURY GEM-SET BAR BROOCHES, each of entwined design, set with either seed pearls, rose-cut diamonds or opal cabochons, the seed pearl example with blue enamel decoration, mounted in gold, *lengths 30–38mm*. £500–£700

### 341

TWO EARLY 20TH CENTURY GEM-SET RINGS, comprising a diamond two stone crossover ring, stamped '18CT', together with a three stone pearl ring with diamond-set fanned detailing, mounted in gold, (pearls untested), *ring sizes R and P½*. £200–£300

### 342

A COLLECTION OF JEWELLERY, comprising a diamond cluster ring, a cultured pearl necklace with 9ct gold mounted coral set clasp, a silver chain bracelet and necklace by Tiffany & Co., both with signed discs, and a silver hinged bangle. (5) £300–£400

### 343

A PEARL NECKLACE, the four rows of pearls, *measuring approximately 3.00–4.20mm*, alternating to the front with seed pearls, to an oval-cut pink doublet clasp, (pearls untested), *length 35cm*.

£260–£360

### 344

A COLLECTION OF JEWELLERY, comprising two gem-set cluster brooches, an early 20th century sapphire and diamond bar brooch, two further gem-set brooches and a wristwatch, *various dimensions*. (6)

£700–£900

### 345

A PENDANT AND BANGLE BY TIFFANY & CO, comprising a tapered heart pendant on chain by Paloma Picasso, set with a brilliant-cut diamond, together with a torque bangle with beaded terminals, stamped '925', signed, *bangle diameter 5.5 x 5.8cm*.

£150–£200

### 346

THREE GEM-SET JEWELS, comprising a diamond scroll brooch, set with single and baguette-cut diamonds, a jadeite cabochon brooch, and a sapphire and diamond dress ring, (jadeite untested), ring stamped '585', *brooch lengths 6cm, ring size N–O*.

£200–£300

### 347

A COLLECTION OF JEWELS, comprising a malachite and gold mounted brooch, four variously set 19th century brooches, a bangle with cabochon moonstone clasp, an amethyst and cultured pearl bracelet with additional loose link, a brooch adapted from a pair of gold oval panel cufflinks, a 9ct gold lady's wristwatch on leather strap and three pearl necklaces, (pearls untested). (Quantity)

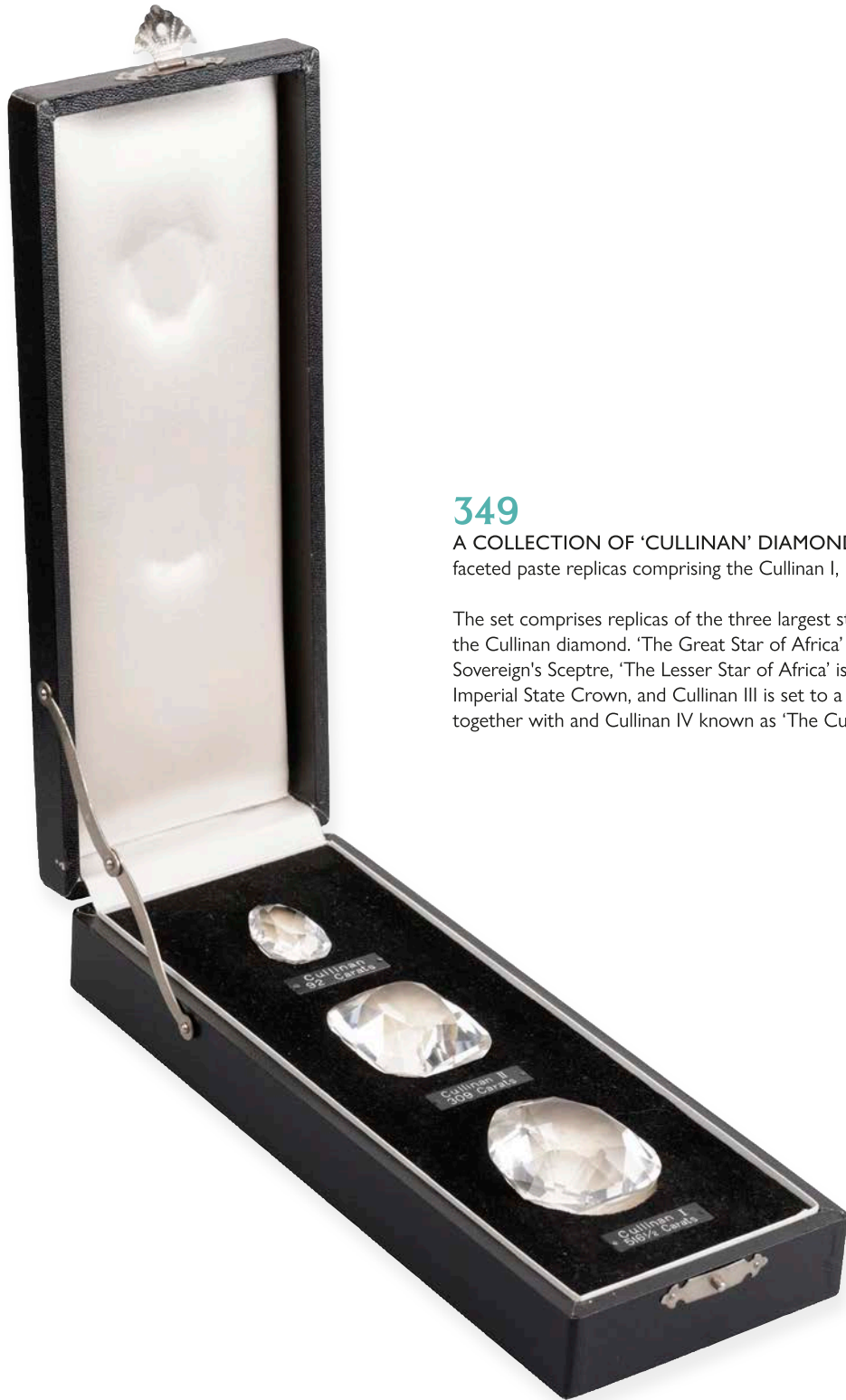
£600–£800

According to a PMI test on the XRF analyzer, the brooch adapted from a pair of cufflinks is testing as 18ct gold.

### 348

A COLLECTION OF ANTIQUE AND LATER BROOCHES, comprising five gem-set bar brooches, set with a combination of pearls, diamonds, amethyst etc., together with a jabot pin with bicoloured bead terminals, mounted in gold, (pearls untested), *various lengths*. (6)

£500–£700



### 349

A COLLECTION OF 'CULLINAN' DIAMOND REPLICAS, the three faceted paste replicas comprising the Cullinan I, II and III, cased. £100-£200

The set comprises replicas of the three largest stones cleaved and cut from the Cullinan diamond. 'The Great Star of Africa' is set in the head of the Sovereign's Sceptre, 'The Lesser Star of Africa' is set at the front of the Imperial State Crown, and Cullinan III is set to a brooch, and often worn together with and Cullinan IV known as 'The Cullinan Brooch'.



WATCHES

---

LOT

No 399

### 350

CONTINENTAL. A GOLD QUARTER REPEATING OPEN-FACED WATCH CIRCA 1820.

Movement: cylinder escapement, repeating on coiled gongs.

Dial: white enamel, Roman numerals, subsidiary seconds.

Case: 18ct gold, gold cuvette, engine-turned, repeating piston to the pendant, no. 1317.

Signed: unsigned.

Dimensions: diameter 49.5mm.

£800–£1,000



### 351

ROLEX, RETAILED BY DAVIS & SONS, BRIGHTON. A GOLD OPEN-FACED KEYLESS WATCH, 1921.

Movement: lever escapement.

Dial: white enamel, Roman numerals, subsidiary seconds.

Case: 9ct gold, gold cuvette, engraved initials to the rear cover, no. 231241, maker's mark A.L.D, Birmingham hallmark for 1921.

Signed: movement signed Rolex, case signed Dennison.

Dimensions: diameter 49mm.

£600–£800

### 352

WIDDOWSON & VEALE, LONDON. A GOLD OPEN-FACED KEYLESS WATCH, 1898.

Movement: gilded three quarter plate, lever escapement, diamond endstone, no. 11012.

Dial: gilt, engine-turned chapter ring, Roman numerals, centre engraved with foliate decoration.

Case: 18ct gold, gold cuvette with engraved inscription, engine-turned back, engraved initials, maker's mark GHH, London hallmark for 1898.

Signed: movement signed Widdowson & Veale, 73 Strand, London.

Dimensions: diameter 34.5mm.

Together with a fitted presentation case.

£600–£800



### 353

COOK & BURCHETT, LONDON. A GOLD HALF HUNTING CASSED WATCH, 1878.

Movement: gilded three quarter plate, lever escapement, no. 95643.

Dial: white enamel, Roman numerals.

Case: 18ct gold, gold cuvette, glazed aperture, blue enamel Roman numerals, blue enamel monogram to rear cover, maker's mark FM, London hallmark for 1878.

Signed: movement signed Cook & Burchett, 72, 73 & 130 Oxford Street.

Dimensions: diameter 39.5mm.

£600–£800

## 354

PATEK PHILIPPE, RETAILED BY GONDOLO & LABOURIAU RIO DE JANEIRO, A GOLD OPEN-FACED KEYLESS WATCH, CHRONOMETRO GONDOLO, CIRCA 1913.

Movement: 20''' moustache lever escapement, snail-form cam regulator, wolf's tooth winding, no. 181932.

Dial: white enamel, Roman numerals, outer Arabic track, subsidiary seconds.

Case: 18ct gold, gold engraved cuvette, engine-turned back, no. 246282.

Signed: case, dial, movement and cuvette.

Dimensions: diameter 55.5mm.

£2,000–£3,000

Patek Philippe began selling watches in South American through the retailer Gondolo and Labouriau, based in Rio de Janeiro, in 1872.

The 'Chronometro Gondolo' watches, produced between 1902 and 1930, were designed exclusively for the retailer and were made with specific specifications to differentiate them from other watches produced by Patek. These special high precision watches include a moustache lever, gold-plated wheels for the train, keyless wolf's tooth winding and precision regulator with snail-form cam.



### 355

ROLEX. A GOLD RECTANGULAR WRISTWATCH, REF. 2024, CIRCA 1933.

Movement: Ultra Prima, manual winding, 17 jewels.

Dial: silvered, Arabic numerals, subsidiary seconds.

Case: 9ct gold, hinged back, fixed lugs, no. 12100, Glasgow import mark for 1933.

Signed: case and movement.

Dimensions: length including lugs 36mm, width 22mm.

£300–£400



### 356

ERNEST BOREL. A LADY'S GOLD BANGLE WATCH WITH CONCEALED DIAL, CIRCA 1950.

Movement: manual winding, 17 jewels.

Dial: silvered, applied Arabic and dot indexes.

Case: 18ct gold, snap-on back, no. 029017 125126, hinged dial cover, hinged bangle, engraved decoration.

Signed: case, dial and movement.

Dimensions: length of dial 15mm, width 10mm.

£700–£900

### 357

CRUSADER, RETAILED BY ASPREY. A GOLD PURSE WATCH, 1936.

Movement: manual winding, 15 jewels, no. 96492.

Dial: silvered two-tone, Arabic numerals, subsidiary seconds.

Case: 9ct gold, concealed within an engine-turned case with sprung cover, applied enamel initials, no. 4268, Birmingham hallmark for 1936.

Signed: dial and movement, case signed Dennison.

Dimensions: length 43mm, 31mm.

£800–£1,200



### 358

SWISS. A LADY'S PLATINUM AND DIAMOND-SET RECTANGULAR COCKTAIL, CIRCA 1930.

Movement: cal. 790, manual winding, 15 jewels.

Dial: silvered, Arabic numerals.

Case: platinum, diamond-set bezel, hinged back, later added mesh bracelet.

Signed: unsigned movement, dial signed Asprey.

Dimensions: length 25.5mm, width 14mm.

£500–£700



### 359

CRUSADER. A LADY'S PLATINUM AND DIAMOND-SET COCKTAIL WATCH, CIRCA 1930.

Movement: manual winding, 15 jewels, no. 61006.

Dial: silvered, Arabic numerals.

Case: platinum, hinged back, diamond-set bezel.

Signed: dial and movement, case signed Bros. Ltd.

Dimensions: length 25mm, width 12mm.

£150–£200

### 360

J F BAUTTE & CIE, GENÈVE. A GOLD AND ENAMEL OPEN-FACED WATCH, CIRCA 1800.

Movement: cylinder escapement.

Dial: silvered guilloché, Roman numerals.

Case: 18ct gold, gold cuvette, black enamel, foliate decoration, polychrome enamel cloisonné; flowers to the centre, no. 54944.

Signed: cuvette.

Dimensions: diameter 38mm.

Together with matching gold and enamel chain and key. £800–£1,000



### 361

SOLVIL, GENÈVE. A LADY'S GOLD, DIAMOND AND SYNTHETIC RUBY-SET COCKTAIL WATCH, CIRCA 1940.

**Movement:** manual winding, 17 jewels, no. 40561.

**Dial:** silvered, applied dot indexes.

**Case:** 18ct gold, snap-on back, ribbed sides, oversized diamond-set curved lugs with hinged ends, integral snake link bracelet, synthetic rubies to the clasp, no. 10393.

**Signed:** dial, Paul Ditisheim movement.

**Dimensions:** length including lugs 48mm, width 20mm, bracelet circumference approximately 170mm. £1,400–£1,800



### 362

SWISS. A LADY'S PLATINUM AND DIAMOND-SET COCKTAIL WATCH, CIRCA 1960.

**Movement:** manual winding, 17 jewels.

**Dial:** silvered, applied baton indexes.

**Case:** platinum, hinged back, diamond-set bezel, integral diamond-set bezel, total diamond weight approximately 8.5 carats.

**Signed:** unsigned.

**Dimensions:** diameter 15mm, bracelet circumference approximately 150mm. £1,200–£1,500

### 363

GÜBELIN. A LADY'S WHITE GOLD AND DIAMOND-SET BRACELET WATCH, 1968.

**Movement:** cal. 11135, manual winding, 17 jewels.

**Dial:** silvered, applied baton indexes.

**Case:** 18ct white gold case back, snap-on back, no. 184012, set within a 9ct white gold woven bracelet, diamond-set bezel and extended embellishment, London hallmark for 1968 to the clasp.

**Signed:** case, dial and movement, clasp stamped EVB.

**Dimensions:** diameter 14mm, width of bracelet 22mm, bracelet circumference approximately 145mm. £1,200–£1,500





## 364

ROLEX. AN UNUSUAL LADY'S GOLD AND DIAMOND-SET COCKTAIL WATCH WITH CONCEALED DIAL, HAUTE PRECISION CIRCA 1960.

Movement: manual winding, 17 jewels.

Dial: silvered, applied dot, baton and Arabic indexes.

Case: 18ct gold, snap-on back, no. 64170, reeded tapered hinged dial cover, diamond-set lugs, domed-formed articulated bracelet, engraved inscription to back.

Signed: inner case, dial and movement.

Dimensions: dial diameter 17mm, length including diamond-set lugs 41mm, bracelet circumference approximately £4,600–£5,000



### 365

ROLEX. A LADY'S GOLD BRACELET WATCH, PRECISION, CIRCA 1959.

Movement: manual winding, 17 jewels.

Dial: silvered, applied baton indexes.

Case: 9ct gold, snap-on back, no. 339940, Chester hallmark for 1959, integral hexagonal link bracelet, clasp with Birmingham hallmark for 1959.

Signed: case, dial, movement and bracelet.

Dimensions: diameter 16.5mm, bracelet circumference approximately 140mm.

Accessories: service papers dated October 2025 **£400–£600**



### 366

OMEGA, RETAILED BY TÜRLER. A GOLD PLATED AUTOMATIC WRISTWATCH WITH DATE, REF. 166067, SEAMASTER, CIRCA 1969.

Movement: cal. 565, automatic, 24 jewels, no. 30305438.

Dial: gilt, applied baton indexes, date aperture, centre seconds.

Case: gold plated, screw-down back.

Signed: case, dial and movement.

Dimensions: diameter 36mm.

Accessories: presentation case. **£100–£150**

### 367

MUST DE CARTIER. A LADY'S GOLD PLATED RECTANGULAR WRISTWATCH, TANK, CIRCA 1980.

Movement: manual winding.

Dial: gilt sunburst pattern.

Case: gold plated, back secured by four screws, cabochon sapphire-set crown, no. 3 171205.

Signed: case, dial and movement.

Dimensions: length including lugs 27.5mm, width 20.5mm.

**£100–£200**



### 368

JAEGER-LECOULTRE. A WHITE GOLD ULTRA-SLIM WRISTWATCH, REF. 1901, CIRCA 1960.

Movement: cal. 818, manual winding, no. 1406976.

Dial: silvered, cross-hair, applied baton indexes.

Case: 18ct white gold, snap-on back, no. 806630.

Signed: case, dial and movement.

Dimensions: diameter 33.5mm. **£600–£800**

### 369

CARTIER. A LADY'S GOLD RECTANGULAR WRISTWATCH, REF. 2443, TANK ALLONGÉE, CIRCA 1990.

Movement: quartz.

Dial: silvered, Roman numerals, secret signature at X.

Case: 18ct gold, back secured by four screws, no. 026515 SM, cabochon sapphire-set crown, 18ct gold buckle.

Signed: case, dial, movement and buckle.

Dimensions: length including lugs 28mm, width 14mm.

Accessories: booklet, service papers and pouch.

£2,000–£3,000



### 370

CARTIER. A LADY'S STAINLESS STEEL AND GOLD WRISTWATCH WITH BRACELET, REF. 6692, PANTHÈRE, CIRCA 2008.

Movement: quartz.

Dial: silvered, Roman numerals, secret signature at X.

Case: stainless steel, back secured by eight screws, gold bezel, cabochon sapphire-set crown, no. 66921001896, stainless steel and gold bracelet.

Signed: case, dial, movement and bracelet.

Dimensions: length 21.5mm, width 21.5mm, bracelet circumference approximately 165mm.

Accessories: pouch.

£1,500–£2,000

### 371

CARTIER. A LADY'S GOLD SQUARE WRISTWATCH WITH BRACELET, REF. 8669, PANTHÈRE, CIRCA 1990.

Movement: quartz.

Dial: silvered, Roman numerals, secret signature at X.

Case: 18ct gold, back secured by eight screws, cabochon sapphire-set winding crown, no. 866911 32366. 18ct gold brick link bracelet.

Signed: case, dial, movement and bracelet.

Dimensions: length 21.5mm, 21.5mm width, bracelet circumference approximately 170mm.

Accessories: service papers date 2013 and pouch. £3,000–£5,000





### 372

PATEK PHILIPPE. A LADY'S GOLD AND DIAMOND-SET OVAL WRISTWATCH, REF. 4564, ELLIPSE, CIRCA 1990.

Movement: cal. 16-250, manual winding, 18 jewels, no. 1412680.

Dial: gilt, diamond-set indexes to the quarters.

Case: 18ct gold, snap-on back, no. 2830263, 18ct gold buckle.

Signed: case, dial, movement and buckle.

Dimensions: length 23.5mm, width 20mm.

Accessories: presentation case.

£1,800–£2,600

### 373

PATEK PHILIPPE. A GOLD BRACELET WATCH, REF. 2591, CIRCA 1960.

Movement: cal. 23-300, manual winding, 18 jewels, stamped with the seal of Geneva, no. 785568.

Dial: silvered, applied baton indexes.

Case: 18ct gold, snap-on back, no. 427126, integral woven bracelet, maker's mark GF (Gay Frères), London import mark for 1962.

Signed: case, dial, movement and bracelet.

Dimensions: diameter 34mm, bracelet circumference approximately 160mm.

£3,000–£4,000



### 374

CORUM. A GOLD KRUGERRAND LEFT-HANDED COIN WATCH, CIRCA 1990.

Movement: quartz.

Dial: South Africa 1978 gold Krugerrand.

Case: 18ct gold, snap-on back, milled band, diamond-set winding crown, no. 355257.

Signed: case, dial and movement.

Dimensions: diameter 33.5mm.

£1,000–£1,500

## 375

BLANCPAIN. A LIMITED EDITION GOLD DUAL TIME AUTOMATIC WRISTWATCH WITH DATE, ALARM, 24-HOUR INDICATION AND POWER RESERVE, LÉMAN RÉVEIL GMT, NO. 31/270, CIRCA 2005.

Movement: cal.12416, automatic, 38 jewels.

Dial: black, applied baton and Arabic indexes, subsidiary dials for constant seconds, dual time zone and 24-hour indication, date aperture, power reserve and alarm.

Case: 18ct gold, screw-down sapphire crystal display back, 18ct gold folding buckle.

Signed: case, dial, movement and buckle.

Dimensions: *diameter 40.5mm.*

£6,000–£8,000

Blancpain introduced the first Léman Réveil GMT models in the early 2000s, their aim was to create a sophisticated travel watch with two time zones, quick time/date adjustment and a high quality alarm function.

The current model is part of a limited edition of just 270 pieces, produced to commemorate Blancpain's 270th anniversary.



### 376

VAN CLEEF & ARPELS. A GOLD OVAL DUAL DIAL WRISTWATCH, CIRCA 1990.

Movements: quartz.

Dials: 1st: white, Roman numerals; 2nd: two-tone gilt.

Case: 18ct gold, hinged t-bar lugs, no. D1501, gold sliding clasp.

Signed: dials.

Dimensions: length 34mm.

£1,000–£1,500



### 377

GRAFF, LONDON. A STAINLESS STEEL AND GOLD AUTOMATIC WRISTWATCH, CIRCA 2000.

Movement: automatic.

Dial: white, Roman numerals, date aperture.

Case: stainless steel, sapphire crystal display back secured by four screws.

Signed: dial.

Dimensions: diameter 34mm.

Accessories: presentation case.

£200–£300

### 378

OMEGA. A GOLD AUTOMATIC WRISTWATCH WITH DATE, REF. 2603.30.37, SEAMASTER, AQUA TERRA, CO-AXIAL, CIRCA 2007.

Movement: cal. 2500, co-axial, automatic, 27 jewels, no. 81962699.

Dial: silvered, applied dagger indexes, date aperture, centre seconds.

Case: 18ct gold, screw-down sapphire crystal display back, no. 81962699.

Signed: case, dial and movement.

Dimensions: diameter 39mm.

£2,600–£3,000



### 379

OMEGA. A GOLD WRISTWATCH, CIRCA 1952.

Movement: cal. 265, manual winding, 15 jewels, no. 13049201.

Dial: silvered, applied Arabic and dagger indexes, engine-turned subsidiary seconds.

Case: 9ct gold, snap-on back with engraved inscription, no. 546706, Birmingham hallmark for 1952, gilt metal buckle.

Signed: dial and movement, case signed Dennison.

Dimensions: diameter 33mm.

Accessories: presentation case.

£200–£300

### 380

PATEK PHILIPPE. A GOLD SQUARE WRISTWATCH, REF. 4222, CIRCA 1970.

Movement: cal. 16-250, manual winding, no. 1264658.

Dial: white, Roman numerals.

Case: 18ct gold, snap-on back, no. 2731129, 18ct gold buckle.

Signed: case, dial, movement and buckle.

Dimensions: length 25.5mm, width 25.5mm.

Accessories: presentation case.

£3,000–£5,000



### 381

KUTCHINSKY. A WHITE GOLD OVAL BRACELET WATCH, CIRCA 1968.

Movement: cal. 97B, manual winding.

Dial: silvered, Roman numerals.

Case: 18ct white gold, snap-on back, integral textured bracelet, London import mark for 1968.

Signed: dial, inside case stamped Delano.

Dimensions: length 35.5mm, width 27.5mm.

Accessories: presentation case.

£1,800–£2,600

### 382

OMEGA. A STAINLESS STEEL AUTOMATIC WRISTWATCH, REF. 2846 15 SC, SEAMASTER, CIRCA 1958.

Movement: cal. 501, automatic, 20 jewels, no. 16509119.

Dial: silvered with cross-hair, applied baton indexes, centre seconds.

Case: stainless steel, snap-on back, no. 2848.

Signed: case, dial and movement.

Dimensions: diameter 33.5mm.

£400–£600



### 383

VACHERON & CONSTANTIN. A STAINLESS STEEL WRISTWATCH, CIRCA 1945.

Movement: cal. V466, manual winding, 17 jewels, no. 462442.

Dial: silvered, applied Arabic and dot indexes, centre seconds.

Case: stainless steel, movement cap, screw-down back, no. 303099.

Signed: case, dial and movement.

Dimensions: diameter 32mm.

£400–£600

### 384

BAUME & MERCIER. A LADY'S RECTANGULAR GOLD AND DIAMOND-SET BRACELET WATCH, REF. 18413 9, CIRCA 1985.

Movement: cal. 6501, quartz, 9 jewels.

Dial: gilt, applied baton indexes.

Case: 18ct gold, back secured by four screws, diamond-set bezel, integral woven bracelet, cabochon sapphire-set crown.

Signed: case, dial, movement and bracelet.

Dimensions: length 20mm, width 19mm, bracelet circumference approximately 160mm.

Accessories: guarantee card, original receipt, instructions, wallet and present case. **£1,500–£2,000**



### 385

PATEK PHILIPPE. A LADY'S RECTANGULAR WHITE GOLD AND DIAMOND-SET BRACELET WATCH, REF. 4102-1, CIRCA 1972.

Movement: manual winding, 20 jewels, stamped with the seal of Geneva, no. 1246423.

Dial: silvered, applied baton indexes.

Case: 18ct white gold, snap-on back, diamond-set bezel, textured integral bracelet, no. 2712394.

Signed: case, dial, movement and bracelet.

Dimensions: length 21.5mm, width 18mm, bracelet circumference approximately 175mm. **£2,800–£3,600**

### 386

CHOPARD. A LADY'S GOLD OVAL BRACELET WATCH, REF. 5042, CIRCA 1972.

Movement: manual winding, 17 jewels.

Dial: black.

Case: 18ct gold, snap-on back, no. 51284, integral textured fancy link bracelet, London import mark for 1972.

Signed: case, dial, movement and clasp.

Dimensions: length 21mm, width 25.5mm, bracelet circumference approximately 170mm. **£2,000–£2,400**



### 387

LONGINES. A LADY'S WHITE GOLD AND DIAMOND-SET BRACELET WATCH, REF. 40769, CIRCA 1966.

Movement: cal. 410, manual winding, 17 jewels, no. 13388761.

Dial: silvered, applied baton indexes.

Case: 18ct white gold, snap-on back, integral textured brick link bracelet, diamond-set sides.

Signed: case, dial and movement, clasp stamped GRG.

Dimensions: length 17.5mm, width 21.5mm, bracelet circumference approximately 165mm. **£1,800–£2,600**

## 388

VACHERON & CONSTANTIN. A LADY'S GOLD AND DIAMOND-SET CURVED BRACELET WATCH, CIRCA 1960.

Movement: cal.1430, manual winding, 18 jewels, no. 671787.

Dial: gilt, applied baton indexes.

Case: 18ct gold, back secured by two screws, back wound, diamond-set bezel, no. 514149, integral woven bracelet.

Signed: case, dial, movement and bracelet.

Dimensions: length 28.5mm, width 21.5mm, bracelet circumference approximately 170mm. £3,600–£4,600

Founded in 1755, Vacheron Constantin is one of the world's oldest watch manufacturers, boasting an unbroken tradition of fine watchmaking. The brand is renowned for its beautifully crafted timepieces, distinguished by harmonious proportions and exquisitely engineered movements.



## 389

FRANCK MULLER. A LADY'S WHITE GOLD AND DIAMOND-SET AUTOMATIC TONNEAU-FORM WRISTWATCH, REF. 8001 L SC D, NO. 22, CONQUISTADOR, CIRCA 2000.

Movement: automatic.

Dial: translucent burgundy enamel over an engine-turned ground, Arabic numerals, magnified date aperture, centre seconds.

Case: 18ct white gold, back secured by four screws, diamond-set bezel and lugs.

Signed: case, dial and movement.

Dimensions: *length including lugs 38.5mm.*

Accessories: certificate of origin, leather folder, presentation case.

£4,000–£6,000



## 390

ROLEX. A RARE WHITE GOLD AUTOMATIC CHRONOGRAPH WRISTWATCH WITH BRACELET, REF. 116509, DAYTONA 'PANDA DIAL', CIRCA 2009.

Movement: cal. 4130, automatic, 44 jewels.

Dial: silvered, applied Arabic numerals, black subsidiary dials for constant seconds, 30-minute and 12-hour registers.

Case: 18ct white gold Oyster case, screw-down back, crown and chronograph pushers, engraved inscription to case back, no. V393692, 18ct white gold Oyster bracelet.

Signed: case, dial, movement and bracelet.

Dimensions: *diameter 40mm, bracelet circumference approximately 200mm.*

Accessories: guarantee card dated 2011, instruction booklet, swing tag, presentation case, outer card box. **£18,000–£26,000**

Launched in 2004 the reference 116509 is crafted from the finest 18ct white gold, which is produced in the Rolex in-house foundry, making it one of the most desirable and luxurious models they produce.

The watch is powered by the automatic caliber 4130, Rolex's first in-house produced chronograph movement which they revealed in 2000 along side the reference 116520 stainless steel Daytona.

This watch is further distinguished by its striking 'Panda' dial. This iconic design of white background with black sub-dials has been made famous by the rare 1970's Rolex 'Paul Newman' models, these exotic dials are highly sought after by collectors.



### 391

BREITLING. A STAINLESS STEEL CHRONOGRAPH WRISTWATCH WITH DATE, NAVITIMER, CIRCA 1970.

Movement: cal. 7740, manual winding, 17 jewels.

Dial: black, baton and Arabic indexes, engine-turned subsidiary dials for constant seconds, 30-minute and 12-hour registers, date aperture, bi-directional slide rule bezel, no. 1423910.

Case: stainless steel, snap-on back, stainless steel buckle.

Signed: case, dial, movement and buckle.

Dimensions: diameter 40mm.

£1,600–£1,800



### 392

ROLEX. A STAINLESS STEEL AUTOMATIC WRISTWATCH WITH DATE AND BRACELET, REF. 1500, OYSTER PERPETUAL DATE, CIRCA 1977.

Movement: cal. 1570, automatic, 26 jewels

Dial: silver, applied baton indexes, magnified date aperture

Case: stainless steel, Oyster case with screw-down back and crown, no. 5138147, stainless steel Oyster bracelet

Signed: case, dial, movement and bracelet.

Dimensions: diameter 35mm, bracelet circumference approximately 195mm.

£1,500–£2,000



### 393

OMEGA. A STAINLESS STEEL AUTOMATIC WRISTWATCH WITH DATE AND BRACELET, REF. 25033300, SEAMASTER AQUA TERRA CO-AXIAL, 2004.

Movement: cal. 2500, automatic co-axial, 27 jewels, no. 80691252.

Dial: silvered, applied dagger indexes, date aperture, centre seconds.

Case: stainless steel, screw-down sapphire crystal display back, stainless steel bracelet.

Signed: case, dial, movement and bracelet.

Dimensions: diameter 39mm, bracelet circumference approximately 175mm.

Accessories: warranty card, chronometer certificate, pictograms card, instructions, four spare links and presentation case.

£1,000–£2,000



### 394

OMEGA. A STAINLESS STEEL AUTOMATIC WRISTWATCH WITH DATE AND BRACELET, REF. 166.0128, SEAMASTER, COSMIC 2000, CIRCA 1970.

Movement: cal. 1012, automatic.

Dial: silvered, applied baton indexes, date aperture.

Case: stainless steel, waterproof back, stainless steel bracelet.

Signed: case, dial, movement and bracelet.

Dimensions: diameter 38mm.

£200–£300

## 395

ROLEX. A STAINLESS STEEL AUTOMATIC CHRONOGRAPH WRISTWATCH, REF. 116520, DAYTONA, CIRCA 2005.

Movement: cal. 4130, automatic, 44 jewels.

Dial: black, applied baton indexes, engine-turned subsidiary dials for constant seconds, 30-minutes and 12-hour registers.

Case: no. stainless steel Oyster case, screw-down back, crown and chronograph pushers, D262860, stainless steel Oyster bracelet.

Signed: case, dial, movement and bracelet.

Dimensions: diameter 39mm, bracelet circumference approximately 200mm.

£10,000–£15,000

The Rolex Daytona is certainly the most famous chronograph watch on the market. Having a long history of producing sports chronograph models in 1963 Rolex launched the Cosmograph Daytona, named after the 24-hours Daytona auto race in Florida which Rolex sponsored at the time

In 2000 Rolex released the reference 116520 Daytona, this marked the introduction of Rolex's first in-house calibre 4130 chronograph movement. It's predecessor, the reference 16520 was powered by the calibre 4035 which was produced by Zenith

Production of the ref. 116520 ceased in 2016 when Rolex launched the ref. 116500LN with ceramic bezel.



### 396

BREITLING. A STAINLESS STEEL AUTOMATIC DIVE WATCH WITH DATE, REF. A17392 SUPEROCEAN 11 44, CIRCA 2018.

Movement: cal. B17, automatic, 25 jewels.

Dial: blue, Arabic numerals, date aperture.

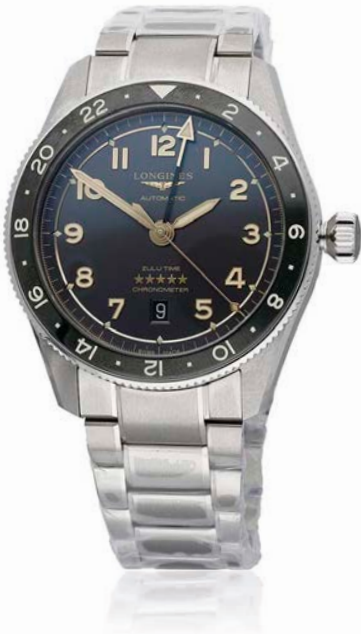
Case: stainless steel, screw-down back, unidirectional calibrated bezel, no. 2981990, stainless steel buckle.

Signed: case, dial, movement and buckle.

Dimensions: diameter 44mm.

Accessories: chronometer certificate instructions, presentation case.

£800–£1,000



### 397

LONGINES. A STAINLESS STEEL AUTOMATIC DUAL TIME ZONE WRISTWATCH WITH DATE AND BRACELET, REF. L38124636, SPIRIT ZULU TIME, CIRCA 2023.

Movement: cal. 844.4, automatic.

Dial: matt black, applied Arabic numerals, 2nd time zone hand, date aperture, centre seconds.

Case: stainless steel, back secured by six screws, green ceramic calibrated bidirectional rotating bezel, no. 53952951, stainless steel bracelet.

Signed: case, dial, movement and bracelet.

Dimensions: diameter 39mm, bracelet circumference approximately 200mm.

Accessories: guarantee card, COSC certified chronometer card, instructions, wallet, protective stickers and tag, presentation case.

£1,200–£1,800

### 398

IWC. A STAINLESS STEEL AUTOMATIC PILOT'S WORLDTIMER WRISTWATCH WITH DATE, REF. IW326201, CIRCA 2014.

Movement: cal. 30750, automatic, 31 jewels.

Dial: black, Arabic numerals, baton and triangular indexes, aperture for date, rotating 24-hour chapter ring, outer ring with 24 world cities.

Case: stainless steel, screw-down back and crown, no. 3846643, stainless steel folding buckle.

Signed: case, dial, movement and buckle.

Dimensions: diameter 45mm.

Accessories: guarantee card.

£1,800–£2,600





## 399

BREITLING. A RARE LIMITED EDITION STAINLESS STEEL DIVER'S WRISTWATCH MADE FOR MEMBERS OF THE ROYALTY AND SPECIALIST PROTECTION UNIT TO COMMEMORATE THE CORONATION OF KING CHARLES III, SUPEROCEAN 42, REF. A17375, CIRCA 2023.

Movement: cal. 17, automatic, 26 jewels.

Dial: dark blue, applied baton indexes, centre seconds, calibrated inner bezel, King Charles cypher at 6 o'clock.

Case: stainless steel, screw-down back, unidirectional ratcheted bezel, case back engraved with the Coronation Emblem, stainless steel bracelet.

Signed: case, dial, movement and bracelet.

Dimensions: diameter 42mm, bracelet circumference approximately 200mm.

Accessories: warranty card, swing tag, travel pouch and presentation case.

£5,000–£7,000

This rare Breitling SuperOcean 42 was produced to commemorate the Coronation of King Charles III. It was made for those serving as part of, and closely associated with, the 'Royalty and Specialist Protection' Unit (RaSP), as part of a limited production run of 189 pieces. The specialist Unit provides close protection to members of the British Royal Family, Government Ministers, including the Prime Minister, and visiting Heads of State.

The dial of this exceptional limited edition wristwatch displays the King's cypher and the case back is engraved with the Coronation Emblem which pays tribute to The King's love of the natural world. The centre seconds hand also has a purple tip, a colour synonymous with Royalty.



## 400

ROLEX. A LADY'S GOLD AND DIAMOND-SET AUTOMATIC WRISTWATCH WITH DATE AND BRACELET, REF. 69188, DATEJUST, CIRCA 1990.

Movement: cal. 2135, automatic, 29 jewels.

Dial: black, diamond-set indexes, magnified date aperture.

Case: 18ct gold Oyster case, screw-down back and crown, diamond-set lugs, pyramid bezel, no. E551059, 18ct gold President bracelet.

Signed: case, dial, movement and bracelet.

Dimensions: diameter 26mm, bracelet circumference approximately 165mm.

£3,000–£4,000



## 401

ROLEX. A STAINLESS STEEL WRISTWATCH WITH DATE AND BRACELET, REF. 6694, OYSTERDATE PRECISION, CIRCA 1975.

Movement: cal. 1225, manual winding, 17 jewels.

Dial: silvered, applied baton indexes, magnified date aperture, centre seconds.

Case: stainless steel, screw-down back and crown, no. 3862800, stainless steel Oyster bracelet.

Signed: case, dial, movement and bracelet signed.

Dimensions: diameter 35mm, bracelet circumference approximately 175mm.

Accessories: Datejust booklet and presentation case.

£1,000–£1,500

## 402

OMEGA. A STAINLESS STEEL AND GOLD BRACELET WATCH WITH DAY AND DATE, REF. 3961070, CONSTELLATION, CIRCA 1990.

Movement: cal. 1444, quartz, 6 jewels, no. 255471.

Dial: black, applied dot indexes, subsidiary gilt dials for day and date.

Case: stainless steel, gold bezel with Roman numerals, integral stainless steel and gold tapered bracelet.

Signed: case, dial, movement and bracelet.

Dimensions: diameter 32.5mm, bracelet circumference approximately 160mm.

Accessories: guarantee booklet, five spare links, presentation case.

£300–£400



## 403

BREITLING. A STAINLESS STEEL AUTOMATIC CHRONOGRAPH WORLD TIME WRISTWATCH WITH BRACELET, REF. AB0521, BENTLEY B05 UNITIME, CIRCA 2013.

Movement: cal. 05, automatic, 56 jewels, Bentley wheel rotor.

Dial: white, applied baton indexes, skeletonised globe motif, subsidiary dials for constant seconds, 30-minute and 12-hour registers, 24-hour chapter ring, inner bezel with 24 world cities, aperture for date.

Case: stainless steel, screw-down sapphire display back and crown, no. 4225973, stainless steel bracelet.

Signed: case, dial, movement and bracelet.

Dimensions: diameter 50mm, bracelet circumference approximately 160mm.

Accessories: warranty card, chronometer certificate, booklets, spare links and presentation case.

£2,000–£3,000



The distinctive design of the B05 Unitime chronograph is truly stunning, with its signature traits from the Breitling and Bentley collaboration. The large stainless steel case is enhanced by its knurled bezel which is inspired by Bentley's signature honeycomb radiator grille motif. The dial has the classic tri-compax configuration with the Unitime main cities inner bezel. The rotor of the movement is styled as a Bentley wheel and visible through the display back.

## 404

ROLEX. A STAINLESS STEEL AUTOMATIC WRISTWATCH WITH BRACELET, REF. 124060, SUBMARINER, CIRCA 2021.

Movement: cal. 3230, automatic, 31 jewels.

Dial: black, applied triangular, baton and dot indexes, centre seconds.

Case: stainless steel Oyster case, screw-down back and crown, black ceramic calibrated bezel, no. 341W39V3, stainless steel Oyster bracelet.

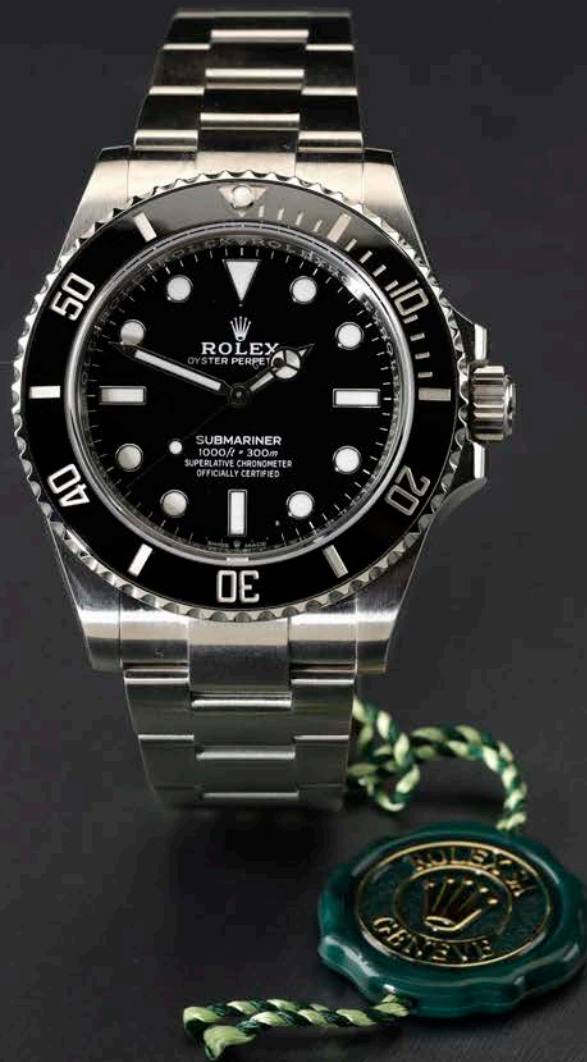
Signed: case, dial, movement and bracelet.

Dimensions: diameter 40mm, bracelet circumference approximately 205mm.

Accessories: guarantee card, tags and presentation case.

£5,000–£7,000

The Submariner was first released by Rolex in 1953. The quintessential tool watch designed to be used by the military and commercial divers exploring the depths of the oceans. Over the decades it has achieved iconic status by being worn by the likes of James Bond and such Hollywood stars as Steve McQueen and Robert Redford. Today the Submariner represents enduring style and horological engineering crafted out of a need for adventure.



## 405

ROLEX. A LADY'S STAINLESS STEEL AND PINK GOLD AUTOMATIC WRISTWATCH WITH DATE AND BRACELET, REF. 178271, DATEJUST, CIRCA 2010.

Movement: cal. 2235, automatic, 31 jewels.

Dial: black, applied Roman numerals, diamond-set VI, magnified date aperture.

Case: stainless steel Oyster case, screw-down back and crown, pink gold bezel, no. G527775, stainless steel and pink gold Jubilee bracelet.

Signed: case, dial, movement and bracelet.

Dimensions: diameter 31mm, bracelet circumference approximately 145mm.  
£4,000–£5,000



## 406

CORUM. A STAINLESS STEEL AND DIAMOND-SET SPLIT-SECONDS CHRONOGRAPH WRISTWATCH, REF. 01.0035, ADMIRAL'S CUP COMPETITION 40, NO. 1000/1000, CIRCA 2013.

Movement: automatic.

Dial: black, subsidiary dials for constant seconds, 30-minute and 12-hour registers, nautical flags, at the hour markers.

Case: stainless steel, screw-down rubber and steel back, diamond-set bezel, carbon-fibre inserts to the pushers, no.2234491, stainless steel clasp.

Signed: case, dial, movement and clasp.

Dimensions: diameter 43mm.

Accessories: instructions, folder and presentation case

£1,200–£1,800

## 407

BREITLING. A STAINLESS STEEL CHRONOGRAPH WRISTWATCH, REF. A25362, BREITLING FOR BENTLEY, CIRCA 2007.

Movement: cal. 25B, automatic, 21 jewels.

Dial: dark green, applied baton indexes, subsidiary dials for constant seconds, 6-hour and 15-minute registers, aperture for date, tachometer scale.

Case: stainless steel, screw-down back and crown, bi-directional slide rule bezel, no. 2025838, stainless steel bracelet.

Signed: case, dial, movement and bracelet.

Dimensions: diameter 49mm, bracelet circumference approximately 200mm.

Accessories: warranty, chronometer certificate, booklet and presentation case.

£1,000–£1,500



## 408 Y

BREITLING. A WHITE GOLD AND DIAMOND-SET RECTANGULAR WRISTWATCH WITH JUMPING HOURS, FLYING B, REF. 2836263/E512, NO. 41/50, CIRCA 2011.

Movement: cal. 28B, automatic, 21 jewels.

Dial: silvered, diamond-set and mother-of-pearl indexes, jumping hours aperture, subsidiary seconds, pavé diamond-set outer plate.

Case: 18ct white gold, back secured by eight screws, diamond-set bezel, sides and lugs, no. 2275937, 18ct white gold bracelet.

Signed: case, dial, movement and bracelet.

Dimensions: length including lugs 56mm, width 38mm, bracelet circumference approximately 190mm.

Accessories: certificate, chronometer certificate, diamond certificate, spare links and presentation case. **£12,000–£18,000**

The collaboration between Bentley Motors and Breitling brought together one of the most stylish, distinguished car brands in the automotive world and world class Swiss brand synonymous with precision watchmaking.

The Flying B model was named after the 'Winged B' emblem of Bentley which represents the exhilaration of motion and harks back to Bentley's background in designing fighter plane engines during the World War I.

This rectangular timepiece is a perfect example of unparalleled luxury and elegance with its unusual jumping hour hand feature and diamond-set dial and case.



## 409

LONGINES. A LADY'S STAINLESS STEEL AND DIAMOND-SET BRACELET WATCH, REF. L42410, LA GRANDE CLASSIQUE, CIRCA 2010.

Movement: quartz.

Dial: white, Roman numerals.

Case: stainless steel, back secured by six screws, diamond-set bezel, stainless steel bracelet.

Signed: case, dial, movement and bracelet.

Dimensions: diameter 24mm, bracelet circumference approximately 160mm. £300-£500



## 410

TAG HEUER. A STAINLESS STEEL WRISTWATCH WITH DATE AND BRACELET, REF. WJ1111-0, LINK, CIRCA 2005.

Movement: quartz.

Dial: silvered, engine-turned chapter ring, applied baton indexes, date aperture.

Case: stainless steel, screw-down back and crown, unidirectional rotating bezel, no. SX3596, stainless steel bracelet.

Signed: case, dial, movement and bracelet.

Dimensions: diameter 39mm, bracelet circumference approximately 170mm. £300-£400

## 411

SEIKO & TISSOT. A GROUP OF THREE STAINLESS STEEL WRISTWATCHES.

The group comprising: a stainless steel Seiko Bell-Matic wristwatch with day and date; a stainless steel automatic Seiko Hi-Beat wristwatch with day and date and a stainless steel quartz Tissot PR 100 Chrono Alarm chronograph wristwatch. (3) £150-£260

## 412

A GROUP OF FIVE WRISTWATCHES.

The group comprising: a stainless steel automatic Bulova wristwatch; a stainless steel quartz Ellesse Sportivo bracelet watch; a blackened steel quartz Tissot wristwatch and two quartz Swiss Army wristwatches. (5) £100-£150



## OBJECTS OF VERTU

---

LOT

**No 466**



### 413

A PAIR OF GOLD LORNETTES, the handle pierced decorated with arabesque scrolling to both sides, engraved with date '1919', with suspension loop, double struck French eagle's head assay marks, on 9ct gold long chain, *handle length 7.5cm, chain length 104cm.* **£1,000–£1,200**

According to a PMI test on the XRF analyzer, the lorgnettes are testing as 17ct gold.



### 414

A 9CT GOLD AND ENAMEL MEDAL, awarded by the City of Leeds Club & Institute Union (C. & I. U.), to W Brabbs, named and dated '1923 - 24', the medal hallmarked Birmingham 1923, mounted to a double scroll surmount and suspensory loop, *length 36.5mm.* **£260–£320**

The C. & I. U. is a politically and religiously neutral organisation to which any *bona fide* club can belong and is still in existence today.



### 415

A VICTORIA SILVER CASED POCKET COMPASS, maker's mark 'J T', Birmingham 1887, with case, *diameter 4.8cm.* **£70–£100**

## 416

A BICOLOURED CHAIN AND FOBS, the curb-link chain suspending a propelling pencil and a hardstone swivel fob seal, one side crested, the other monogrammed, together with a ribbed propelling pencil, the sleeve engraved with presentation inscription 'RACHAEL FROM MALISE', later over enamelled, suspended from bicolour gold curb-link chain, *fob seal length 4.7cm, pencil length 5.2gm.* £600-£800

*Provenance:* The fob seal bears the crest of **Douglas Beresford Malise Ronald Graham, 5th Duke of Montrose** (1852-1925), the crest a winged falcon attacking a stork, monogrammed to the reverse.



## 417

A MINIATURE 9CT GOLD BOSUN'S WHISTLE, foliate engraved, with suspension loop by maker 'R J', Chester 1904, length 40mm. £200-£400



## 418

THREE ANTIQUE SEALS, comprising a late 19th century gold hardstone inset fob seal, the mount modelled as an 'ouroboros', the hardstone engraved with inscription, an early 19th century gold fob seal, inset with chalcedony, supporting a foliate engraved split ring, and plaited fob suspending gilt watch key, and a vari-coloured banded marble desk seal, with bloodstone inset intaglio depicting a dove with olive branch, lengths 2cm, 3cm and 7.3cm. £600-£700



**419**

A 9CT GOLD FOUNTAIN PEN BY PARKER, engine-turned, with vacant reserve, hooded nib, hallmarked for London 1972, length 13.4cm. £400–£500



**420**

A LIGHTER BY CARTIER, with chamfered edge and white enamel decoration, gold plated, signed 'Cartier Paris', numbered '1A96170', length 7cm

£80–£150



**421**

A 9CT GOLD KEY HOLDER, engine turned, with folding fob loop, containing a metal yale type key, London 1958, length 5cm. £150–£200



**422**

A 9CT GOLD VISITING CARD CASE, cushion-shaped with curved profile and engine turned decoration, London hallmark for 1921, length 8.5cm. £800–£900

## 423

A RARE DUNHILL-NAMIKI 'MAKI-E' LACQUER TRAVELLING PEN DECORATED BY MAKIAWA SHICHINOJO / 'SHOBI', CIRCA 1930, with reversible hidden nib, of slim tapered form, finely decorated with 'gold dust' and two goldfish swimming amongst pondweed, the nib engraved 'BROAD DUNHILL NAMIKI '2' MADE IN JAPAN', the shaft signed, and with the personal monogram / seal of the artist in red 'kao', with associated case, *total length 17.3cm.* **£1,800–£2,600**

The Namiki Manufacturing Company was founded in Japan in 1918 by Ryosuke Namiki (1880–1954). In 1925, Namiki showcased their finely decorated pens in the West, catching the attention of prestigious retailers, including Asprey and Cartier, and Clement Court, manager of Alfred Dunhill's Paris shop. In 1926 Namiki opened an office in Bishopsgate and by 1930 a formal contract and partnership was made with Alfred Dunhill, granting Dunhill exclusive worldwide distribution rights outside Japan - cementing the 'Dunhill-Namiki Made in Japan' brand. By this time, Dunhill had a retail network in all the best locations in over thirty countries. In 1938 the company became the Pilot Pen Company.

Shobi was the art name for the artist **Makizawa Shichinojo** (b.1880). He was a pupil of Takahashi Suiho and Shirayama Shosai. He was a member of the staff of Iwate Prefectural Technical High School in 1905 and joined the Namiki Co. in 1928 where he went on to lacquer pieces for Alfred Dunhill..





**424**

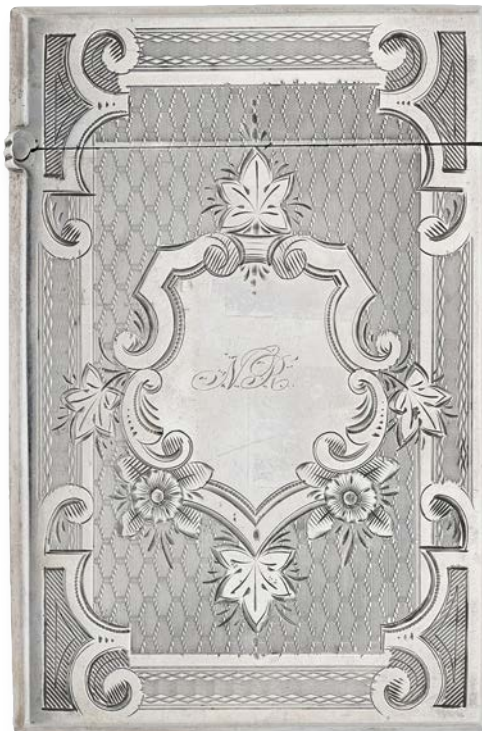
**OF BOAR WAR INTEREST: A VICTORIA SILVER VESTA CASE**, enamelled with an image of a wounded infantryman in the veldt, standing his ground, rifle in hand, entitled 'A Gentleman in Kharki', with suspension loop, by Cornelius Saunders & Francis Shepard, Birmingham 1899, length 47.5mm. **£300-£400**

'A Gentleman in Kharki' is a line from the Rudyard Kipling poem, 'The Absent Minded Beggar' of 1899, set to music by Sir Arthur Sullivan, and often accompanied by an illustration of a wounded but defiant British soldier 'A Gentleman in Kharki' by Richard Caton Woodville. The song was written as part of an appeal by the *Daily Mail* to raise money for soldiers fighting in the Boer War and their families. The Absent-Minded Beggar Fund was hugely successful, raising a total of more than £250,000.



**425**

**AN EDWARD VII 9CT GOLD VESTA CASE**, the front engraved with cursive initials, maker's mark 'H & A', with suspension loop, Birmingham 1902, length 50mm. **£700-£800**

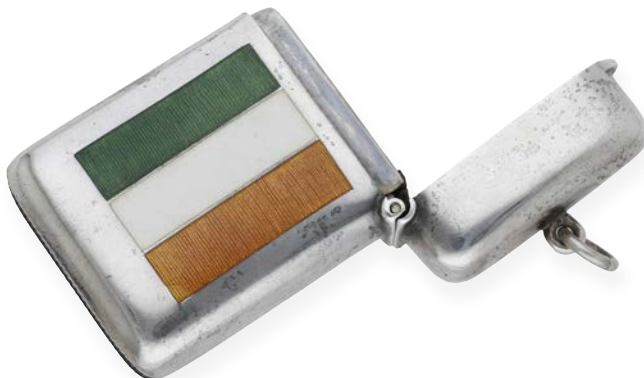


**426**

**AN AMERICAN SILVER VISITING CARD CASE**, CIRCA 1860-1870, engine-turned, one side reserving a coastal scene with lighthouse, the other with initials 'N R' within a shield-shaped reserve, by John Albert Coles & Co., New York, length 9.5cm. **£90-£120**

## 427

BOAR WAR INTEREST: AN EDWARD VII SILVER VESTA CASE, one side enamelled with the ribbon for the Queen's South Africa medal, 1899, the other with the ribbon for the King's South Africa medal, 1902, with suspension loop, by A & J Zimmerman, Birmingham 1905, length 5cm. £300-£400



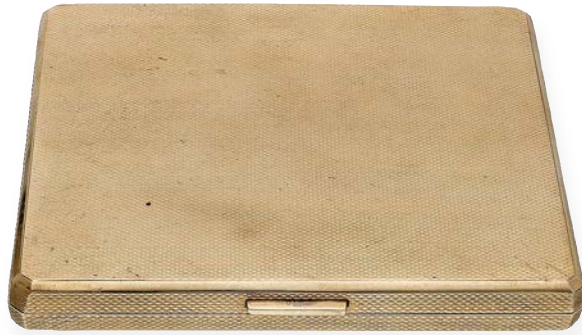
## 428

CLYDE CORINTHIAN YACHT CLUB: A VICTORIA SILVER VESTA CASE, enamelled with the burgee of the club and engraved with initials, maker's mark '\* G.M'. Birmingham 1892, length 5.5cm. £140-£180



## 429

A GEORGE V SILVER VESTA CASE, enamelled with the ribbon of the British War Medal, engraved 'Oscar Jones, R E', with suspension loop, by A & J Zimmerman,, Birmingham 1919, length 5cm. £140-£180



### 430

A 9CT GOLD CIGARETTE CASE, rectangular form with engine turned decoration, opening to reveal a photographic portrait and personal inscription, UK hallmark, length 8cm.

£1,400–£1,600



### 431

AN EDWARD VII 15CT GOLD SOVEREIGN AND HALF SOVEREIGN CASE, with suspension loop, the lid applied with a diamond set initial 'G', Birmingham 1906, length 5.5cm.

£900–£1,200



### 432

A 9CT GOLD CIGARETTE CASE BY ASPREY & CO. LTD, 1930, the rectangular engine-turned case with slide action, the lid with applied initials and presentation inscription within, maker's mark 'A & Co Ltd', dimensions 79 x 63.5 x 9.5mm.

£2,000–£3,000



### 433

A GEORGE II SILVER GILT AND AGATE SNUFF BOX, of cartouche outline, the lid inset with an oval agate, within a border engraved with animals, birds and flowerheads, the sides similarly engraved, the base with crest above the inscription 'Jno Fk Lampe, 1730', and later monogram, unmarked, contained in 19th century case, width 7cm. £600–£800



*Provenance:* The crest is likely to pertain to the SHARP/SHARPE family. The abbreviated inscription should read in full as 'John Frederick Lampe 1730', and was probably a personal gift given by a gentleman of the Sharp/Sharpe family, the snuff box inscribed with the name of the recipient and the date of presentation, 1730.

**John Frederick Lampe** (née Johann Frederich Lampe) (circa 1703–1751) was born in Saxony. John was a musician and a noted composer of the period. Although not a great deal is known about his musical career before his arrival in London around 1725, he made his mark quickly. By 1730 he was employed by John Rich (who had established the Theatre Royal, Covent Garden in 1732) to compose music for pantomimes and other entertainments. John's many operas and songs including the 'Dragon of Wantley', and 'Pyramus and Thisbe'. Apart from his ability as a composer, he was a virtuoso, reputed to be one of the finest bassoonists of his time. He was also known as being a man of irreproachable character. It is perhaps in this context, that one of his benefactors gifted him this snuff box duly inscribed.

John married Isabella Young at the Parish Church of St. Benet Paul's Wharf in the City of London in 1737. Isabella was the daughter of Charles Young, the organist of the Church of All Hallows Barking (otherwise known at All Hallows-by-the-Tower) in the City of London. Her sister Cecilia was the wife of Thomas Augustine Arne, the composer who is best known for writing 'Rule, Britannia!'. Both Isabella and Cecilia were musical, Isabella being a vocalist and an actress, Cecilia regarded as one of the greatest English sopranos of the 18th Century.

John died in Edinburgh in 1751 and was buried in the Canongate Churchyard. John's son Charles John Frederick Lampe (1739–1767) was also a noted composer.

Our thanks to Beacon Genealogical and Heraldic Research for their kind assistance.



John Frederick Lampe: Mezzotint by James Macardell (1727–1765) after a painting by S. Andrea.



**434**

AN EDWARD VII ARTS & CRAFTS SILVER CIGARETTE BOX, the lid applied with two plant-form faux hinges, by William Hutton & Sons, Birmingham 1902, 9cm square. **£140-£180**



**435**

AN ELIZABETH II PLANISHED SILVER BOWL, of plain design, by Henri John-Baptiste, London 1952, diameter 10cm. **£150-£200**



**436**

A VICTORIA SILVER SANDWICH BOX, of plain rectangular form, with drop front, by Henry Griffith, Birmingham 1897, dimensions 8.5 x 12.5cm. **£260-£360**



### 437

A SILVER MOUNTED CUT-GLASS SWAN DISH, the wings forming a cover, pierce-decorated and incorporating cherubs, import marks for London 1962, length 13.5cm. £60-£80



### 438

MINIATURE SILVER: a grand piano with lyre pedal support, a square centre table, a chaise longue, a pair of fauteuils and a pair of side chairs. (7) £120-£140



### 439

A SMALL COLLECTION OF SILVER ITEMS, comprising a Victoria decorative spoon with engraved circular gilt bowl, by Martin, Hall & Co, London 1878, two Georgian tablespoons with later matching fern engraving, a sifter spoon converted from a George III sauce ladle, a pair of grape tongs and a tea strainer, both unmarked, and a Victoria fiddle pattern sauce ladle. (7) £180-£200



## 440

A SMALL COLLECTION OF CONTINENTAL DECORATIVE FLATWARE, the handles cast with two variants of rose blooms, comprising six pastry forks, six tea / ice cream spoons, two butter knives, two pickle forks, a small server and a pie slice, each piece stamped '835'. (18) £120–£150



**441**

SIX PAIRS OF VICTORIA SILVER HORS D'OEUVRE KNIVES AND FORKS, cast with scallop shells and engraved with ferns, by Walker & Hall, Sheffield 1894, cased.

£100–£120

**442**

A PAIR OF EDWARD VII SILVER SERVERS, of plain design, one with heart-shaped bowl, the other elongated, pointed spade-shaped, maker's mark R & S, Sheffield 1904, cased, lengths 25 and 21.5cm.

£150–£200



**443**

A GEORGE VI SILVER CHRISTENING SET, the spoon handle enamelled with an imp, the fork with a rabbit and the knife with a dog and a girl in a blue dress, by Elkington & Co., Birmingham 1938, cased.

£200–£240



**444**

A GEORGE III SILVER TWIN HANDLED SALT, with gadrooned rim, on stepped foot, engraved with a royal crest, by J Wakelin & Robert Garrard, London 1794, total width 13cm. £90-£120



**445**

A PAIR OF VICTORIA SILVER GILT DESSERT SPOONS, of Bacchanalian pattern, the backs of the shell-moulded bowls decorated with masks within manteling, by William Gibson & John Lawrence Langman, London 1884. (2) £150-£180

This elaborate pattern originally dates from the early 19th century and was designed for Rundell, Bridge & Rundell, many pieces being by Paul Storr.



**446**

A GEORGE VI SILVER CORONATION SOUVENIR TWIN HANDLED CUP AND COVER, the shallow body with handles mounted with a lion and unicorn respectively, the cover centred with a crown finial which acts as a candle holder, on tall, slightly tapering column and domed foot, by Charles Boyton, London 1937, engraved with maker's script signature, height 18cm. £150-£200



**447**

A SILVER ROSE WATER SPRINKLER, possibly Turkish, with wrythen pear-shaped body, on leaf-cast foot, stamped '925', height 15cm. £100-£150



**448**

A PAIR OF EDWARD VII SILVER VASES, of tall baluster form, decorated with an applied band of fruiting vine on a planished ground, each on shallow domed foot, crested, by Holland, Aldwinckle & Slater, London 1910, height 19cm. (2) £400-£460



**449**

A SILVER CRUET STAND, the circular stand with pierced border and central carrying handle, on claw and ball feet, fitted with five faceted glass bottles, one with silver hinged lid, two others with silver covers, the stand hallmarked for London 1773, the bottle mounts by Waterhouse, Hodson & Co, Sheffield 1832, diameter 16cm, height of handle 24cm. £300-£400

£300-£400

All lots are subject to extra charges which may be viewed in Ts and Cs 3, 4, 5 and 10 at the back of this catalogue.



**450**

A GEORGE IV SILVER PINT MUG, decorated with two bands of reeding and engraved with the insignia of the Rifle Brigade, the base with later presentation inscription, by William Barrett II, London 1829, height 10.5cm. £200–£300

**451**

A GEORGE II SILVER HALF PINT MUG, with baluster body, and scroll handle, on moulded foot, by William Grundy, London 1743, height 10cm. £200–£300



**452**

A GEORGE III SILVER GOBLET, plain except for an engraved coat of arms, the foot with beaded border, by Digby Scott & Benjamin Smith, London 1784, height 16.5cm. £300–£400

### 453

AN EDWARD VII SILVER BASKET, oval, with shaped, reeded rim and swing handle, the body decorated with a band of bright-cut floral swags united by pierced flowerheads, on foot with vertical piercings, by Charles Stuart Harris, London 1901, length 28cm.

£400-£600



### 454

A SET OF SIX LATE 19TH / EARLY 20TH CENTURY AUSTRIAN SILVER CUPS AND SAUCERS, Vienna, with lappet-cast rims and borders, .800 standard.

£700-£800

### 455

A VICTORIA SILVER BASKET, of rectangular outline with fixed loop handle, pierce-decorated with lunettes, the border repoussé; decorated with C-scrolls and flowerheads, by Martin, Hall & Co., Sheffield 1895, length 29cm.

£240-£280





## 456

OF NELSON INTEREST: A SILVER VINAIGRETTE BY MATTHEW LINWOOD, 1805, of rectangular form, the lid engraved with cursive initials 'A E J', the interior with hinged silver gilt grille cast with a depiction of H.M.S. Victory and the words 'TRAFALGAR Or 21. 1805', the base plain, Birmingham hallmark, length 26mm.

£800–£1,200



## 457

OF NELSON INTEREST: A SILVER AND REVERSE CRYSTAL BICENTENARY COMMEMORATIVE PIN TRAY, centred with a reverse painted rock crystal cabochon of the admiral in full uniform, the British lion at his feet, on a mother-of-pearl ground, the tray engraved with the dates of Nelson's principal naval battles, the reeded border cast at intervals with laurel leaves, by William Comyns, London 1905, length 11.5cm.

£700–£1,000



It had been anticipated that the centenary of Trafalgar and commemoration of Nelson's death in 1905 would have been widely commemorated, but once the new alliance with France, the *Entente Cordiale*, was concluded in 1904, it was felt that too much celebration of the great naval victory over France would not be politically expedient.

This pin tray may have been a special commission to mark the centenary.



## 458

A GEORGIAN ANTI-SLAVERY PINCUSHION, LATE 18TH/EARLY 19TH CENTURY, the circular cushion in red silk with bow atop, the glazed panel depicting an enslaved black man, kneeling, in chains and shackles, the image applied to a painted ground depicting two slave ships flying red flags beneath the motto 'Thank God for Liberty', with mirrored base, diameter 47mm. £1,000–£1,500

For a similar example, depicting an enslaved kneeling man beneath the motto: 'LORD RELEASE THE CAPTIVE', see: V & A, Accession number T.1695-1913.

The most iconic slavery design depicted a kneeling man in chains, beneath the text "Am I Not a Man and a Brother?" after a ceramic medallion produced by Josiah Wedgwood in 1787. Wedgwood's design was based on a seal commissioned by the Committee for the Abolition of the Slave Trade on 5 July 1787. The motif and motto were widely reproduced and disseminated in print, on ceramics, textiles and household goods throughout the late 18th and 19th centuries, becoming fashionable symbols of the British abolition movement.



Illustrated here is the anti-slavery Wedgwood plaque design by Josiah Wedgwood, 1787, the figure probably designed by William Hackwood and Henry Webber, and produced in jasperware cameo by Wedgwood's factory, the Etruria Works. This example, mounted as a stick pin, is held in the collection of The Metropolitan Museum, New York.



### 459

A SILVER EVENING BAG, 1919, the mesh purse to a plain polished frame with cable-link chain, London hallmark, partial maker's mark 'A.M.&M\*', width 18.5cm. **£240-£300**



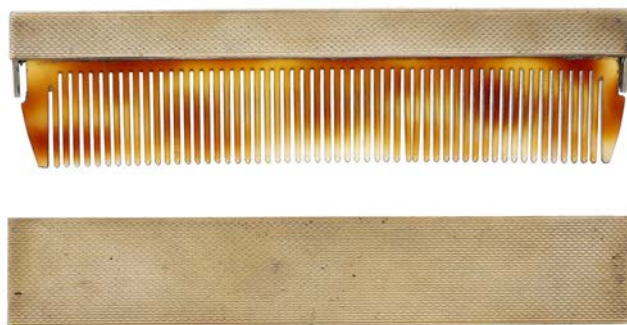
### 460

A SILVER EVENING BAG, CIRCA 1920, the mesh purse to a plain polished frame with elongated cable-link chain, stamped 'CH' and '800', width 15.5cm. **£180-£220**



### 461

A 9CT GOLD EVENING BAG, the mesh purse to a plain polished frame with sapphire cabochons to the thumbpiece and elongated cable-link chain, London import mark, width 12cm. **£3,000-£4,000**



**462**

A 9CT GOLD MOUNTED COMB AND CASE, engine-turned, London 1979,  
length 10cm.

£500–£700

**463**

AN 18CT GOLD CASED PERFUME ATOMISER BY  
KURT WEISS, 1967, the cylindrical case of basket  
weave design, opening to reveal a gilt atomiser,  
maker's mark, London hallmark, length 6.6cm.

£1,000–£1,500



**464**

A 9CT GOLD COMPACT, square form with engine turned decoration, opening to reveal a mirror  
and powder compartment, Birmingham hallmark for 1966, length 7cm.

£1,000–£1,200

**465**

A 9CT GOLD POWDER COMPACT, of rectangular  
form with polished reeded decoration, mirror within,  
presentation inscription to inner rim, hallmarked for  
9ct gold, maker's mark 'WHM', Birmingham 1966,  
dimensions 79 x 61 x 11mm.

£2,600–£3,000





## 466

A BARONESS'S CORONET FOR THE CORONATION OF EDWARD VII BY WRIGHT & DAVIES, 1901, the polished balls or 'pearls' electro-plated, the silver-gilt circlet with textured surface and gadrooned borders, pierced to receive two securing pins (both present), enclosing a crimson velvet and fitted below with a band of ermine, in cardboard box by retailers Ede & Ravenscroft Ltd, *internal diameter 12cm.* **£800–£1,200**

*Provenance:* Believed to be the coronet of Lady Reay, wife of Baron Reay (peerage of Scotland), chief of the clan Mackay.

End of Sale

## INDEX OF MAKERS

BECK & BLYTH	179	GUCCI	238
ALABASTER & WILSON	263	HUNT & ROSKELL	450
D. ARNAUD À MORGES	352	INTERNATIONAL WATCH CO.	391, 404, 412
BAUME & MERCIER	393	JAEGER-LECOULTRE	385, 396, 409
BOODLES	152, 309–310, 313	LE ROI A PARIS	350
BOUCHERON	306	LONGINES	358, 394
BUCHERER	58, 213, 225	H.G. MAUTNER	177
BUECHE-GIROD	403	DAVID MORRIS	23, 181, 270
BULGARI	400	OMEGA	185, 387, 395, 405, 419
CARTIER	236, 239, 287–290, 340, 408	MOSHE OVED	73
CHANEL	153, 397	GILIAN PACKARD	170–173
CHOPARD	61, 63	PATEK PHILIPPE	379, 380, 410, 413
T.F. COOPER	342	POMELLATO	227
DE VROOMEN	180	BEN ROSENFELD	168–169
A. DEMEUR	348	ROLEX	381–382, 384, 386, 388, 390, 392, 399, 401
E.J. DENT	369	T.R. RUSSELL	376
STUART DEVLIN	178	SAMPSON MORDAN	440
DEAKIN & FRANCIS	143	TIFFANY & CO. LTD	94, 96–97
JOHN DONALD	167	DAVID THOMAS	176
SANDILANDS DRINKWATER	453	TUDOR	383
ROGER DUNSTER	341	UNOAERRE	160, 198
GEORG JENSEN	75–80	VAN CLEEF & ARPELS	301, 302
GARRARD & CO.	186	WASELL & HALFORD	377
ALAN MARTIN GARD	174–175	WEMPE	211, 218, 254, 314–317
MICHAEL GOSSCHALK	165, 166	S. WILLIAMS DUBOIS	356
ANDREW GRIMA	161–164		

# DIAMONDS

## DIAMONDS ARE ASSESSED ACCORDING TO THE FOUR C'S

### 1. CARAT WEIGHT

1 Carat equals 0.2 Grams.

### 2. CUT

The quality of a cut is assessed in terms of its proportions, symmetry & polish.

### 3. COLOUR

Unless regarded as a 'fancy' coloured diamond, all diamonds are graded on their lack of colour.

### 4. CLARITY

Diamonds are graded on their freedom from inclusions (within the stone) & blemishes (found on the surface of the stone). They are assessed using 10x magnification.

Please note the four cs of a diamond cannot be fully assessed whilst the stone is mounted. The approximate gradings provided in the condition reports are estimations, made by the specialists whilst the stones were mounted & are for guidance only. If a stone has been unmounted & assessed in a gemmological laboratory, this will be noted in the cataloguing/condition report.

#### COLOUR GRADES

GIA	CIBJO	TRADITIONAL
D	Exceptional White + (EW+)	Finest White
E	Exceptional White (EW)	Finest White
F	Rare White + (RW+)	Fine White
G	Rare White (RW)	Fine White
H	White (W)	White
I	Slightly Tinted White (STW)	Commercial White
J	Slightly Tinted White (STW)	Top Silver Cape
K	Tinted White (TW)	Top Silver Cape
L	Tinted White (TW)	Silver Cape
M-Z	Tinted Colour (TC)	Cape
Fancy	Fancy Colour	

#### CLARITY GRADES

GIA	CIBJO	DESCRIPTION
Flawless (FL)	Loupe Clean (LC)	Shows no inclusions or blemishes
Internally Flawless (IF)	Loupe Clean (LC)	Shows no inclusions & only insignificant blemishes
Very Very Slightly Included (VVS1/2)	Very Very Slightly Included (VVS1-2)	Contains minute inclusions which are very difficult for an experienced grader to see with 10x magnification
Very Slightly Included (VS1-2)	Very Slightly Included (VS1-2)	Contains very small inclusions that are difficult to see with 10x magnification
Slightly Included (SI1-2)	Slightly Included (SI1-2)	Contains inclusions that are easily visible with 10x magnification
Imperfect/Included (I1-3)	Pique (P1-3)	Contains inclusions that are obvious with 10x magnification & can often be seen with the naked eye; durability may be affected



COMMISSION FORM

JEWELLERY, WATCHES, SILVER & OBJECTS OF VERTU  
25 NOVEMBER 2025

Please bid on my behalf at the above sale for the following Lot(s) up to the price(s) mentioned overleaf. These bids are to be executed as cheaply as is permitted by other bids or any reserve.

I understand that in the case of a successful bid, a premium of 24 per cent (plus VAT if delivered or collected within the UK) will be payable by me on the hammer price of all lots.

Please see the Terms and Conditions of Business for any other charges which may be applicable.

Please ensure your bids comply with the steps outlined below:

- Up to £100 by £5
- £100 to £200 by £10
- £200 to £500 by £20
- £500 to £1,000 by £50
- £1,000 to £2,000 by £100
- £2,000 to £5,000 by £200
- £5,000 to £10,000 by £500
- £10,000 to £20,000 by £1,000
- £20,000 to £50,000 by £2,000

Bids of unusual amounts will be rounded down to the bid step below and will not take precedence over a similar bid unless received first.

**NOTE:**

All bids placed other than via our website should be received by 4 PM on the day prior to the sale. Although we will endeavour to execute any late bids, Noonans cannot accept responsibility for bids received after that time. It is strongly advised that you use our online Advance Bidding Facility. If you have a valid email address bids may be entered, and amended or cancelled, online at [www.noonans.co.uk](http://www.noonans.co.uk) right up until a lot is offered. You will receive a confirmatory email for all bids and amendments, Bids posted to our office using this form will be entered by our staff using the same Advance Bidding Facility. **There is, therefore, no better way of ensuring the accuracy of your advance bids than to place them yourself online.**

I confirm that I have read and agree to abide by the Terms and Conditions of Business in the catalogue.

SIGNED

NAME (block capitals)

CLIENT CODE

ADDRESS

TELEPHONE

EMAIL

If successful, payment can be made in the following ways:

**Credit/Debit card** online via [www.noonans.co.uk](http://www.noonans.co.uk)

**Bank Transfer**

Bankers: Lloyds; Piccadilly, London; Sort code: 30-96-64; Account No.: 00622865;  
Swift Code: LOYDGB2L; IBAN: GB70LOYD30966400622865; BIC: LOYDGB21085

**Cheque** payable to Noonans

**Cash** up to a maximum of £5,000

**All payments to be made in pounds sterling.**

Please note payment is due within five working days of the end of the auction.

**YOUR BIDS MAY BE PLACED OVERLEAF**



COMMISSION FORM

JEWELLERY, WATCHES, SILVER & OBJECTS OF VERTU
25 NOVEMBER 2025

If you wish to place a 'plus one' bid, please write '+1' next to the relevant bid

Table with 6 columns: LOT NO., £ BID, LOT NO., £ BID, LOT NO., £ BID. Multiple rows for bid entry.

SALEROOM NOTICES:

Any Saleroom Notices relevant to this auction are automatically posted on the Lot Description pages on our website. Prospective buyers are strongly advised to consult the site for updates.

SUCCESSFUL BIDS

Should you be a successful bidder you will receive an invoice detailing your purchases. All purchases are sent by registered post unless otherwise instructed, for which a minimum charge of £12.00 (plus VAT if resident in the UK) will be added to your invoice. All payments for purchases must be made in pounds sterling. Please check your bids carefully.

PRICES REALISED

The hammer prices bid at the auction are posted on the Internet at www.noonans.co.uk in real time. A full list of prices realised appear on our website as the auction progresses. Telephone enquiries are welcome from 9 AM the following day.

NOONANS  
MAYFAIR

## THE IBRAHIM SALEM COLLECTION OF THE LEVANT: SYRIA AND LEBANON

ALL ENQUIRIES PLEASE CONTACT THOMASINA SMITH OR ANDREW PATTISON  
ON 020 7016 1700 OR EMAIL [BANKNOTES@NOONANS.CO.UK](mailto:BANKNOTES@NOONANS.CO.UK)



### BANQUE CENTRALE DE SYRIE

AN ABSOLUTELY STUNNING PAIR OF OBVERSE AND REVERSE COMPOSITE ESSAYS FOR AN UNADOPTED 100 LIVRES, 1958, SERIAL NUMBER D/2 123456, OBVERSE IN VIBRANT BLUE, ARMS AT RIGHT, REVERSE ALSO IN BLUE, FEATURING A LOVELY HAND-PAINTED IMAGE OF THE TEKKIYE MOSQUE IN DAMASCUS. UNIQUE, AND NOTHING SHORT OF SPECTACULAR IN DESIGN AND QUALITY

NOONANS MAYFAIR 16 BOLTON STREET MAYFAIR LONDON W1J 8BQ  
[WWW.NOONANS.CO.UK](http://WWW.NOONANS.CO.UK)

CONDITIONS MAINLY CONCERNING BUYERS

1 The buyer

The highest bidder shall be the buyer at the 'hammer price' and any dispute shall be settled at the auctioneer's absolute discretion. Every bidder shall be deemed to act as principal unless there is in force a written acknowledgement by Noonans Mayfair Ltd. ("Noonans") that he acts as agent on behalf of a named principal. Bids will be executed in the order that they are received.

2 Minimum increment

The auctioneer shall have the right to refuse any bid which does not conform to Noonans' published bidding increments which may be found at noonans.co.uk and in the bidding form included with the auction catalogue.

3 The premium

The buyer shall pay to Noonans a premium of 24% on the 'hammer price' and agrees that Noonans, when acting as agent for the seller, may also receive commission from the seller in accordance with Condition 16.

4 Value Added Tax (VAT)

The buyers' premium is subject to the current rate of Value Added Tax if the lot is delivered to or collected by the purchaser within the UK.

**Lots marked 'X' are subject to importation VAT of 5% on the hammer price unless re-exported outside the UK, as per the conditions below.**

Buyers who wish to hand carry their lots to export them from the UK will be charged VAT at the prevailing rate and importation VAT (where applicable) and will not be able to claim a VAT refund.

Buyers will only be able to secure a VAT free invoice and/or VAT refund if the goods are exported by Noonans or a pre-approved commercial shipper. Where the buyer instructs a pre-approved commercial shipper, proof of correct export out of the UK must be provided to Noonans by the buyer within 30 days of export and no later than 90 days from the date of the sale. Refunds are subject to a £50 administrative fee.

**Lots marked '††' are subject to the Standard Rate of VAT, currently 20%, on both the hammer price and buyers' premium.**

**VAT can only be removed from the hammer price, if goods are exported by Noonans or a pre-approved commercial shipper as per above.**

**All lots will be subject to VAT on the buyers' premium regardless of whether the lot is exported.**

5. Artist's Resale Rights (Droit de Suite)

Lots marked ARR in the catalogue indicate lots that may be subject to this royalty payment.

The royalty will be charged to the buyer on the 'hammer price' and is in addition to the buyers' premium. Royalties are charged on a sliding percentage scale as shown below but do not apply to lots where the hammer price is less than 1000 pounds sterling. All royalty charges are paid in full to The Design and Artists Copyright Society (DACS).

Portion of the hammer price	Royalties
From 0 to £50,000	4%
From £50,000.01 to £200,000	3%
From £200,000.01 to £350,000	1%
From £350,000.01 to £500,000	0.5%
Exceeding £500,000	0.25%

VAT does not apply to the Artist's Resale Rights.

6 Payment

When a lot is sold the buyer shall:

- (a) confirm to Noonans his or her name and address and, if so requested, give proof of identity; and
- (b) pay to Noonans the 'total amount due' in pounds sterling within five working days of the end of the sale (unless credit terms have been agreed with Noonans before the auction). Please note that we will not accept cash payments in excess of £5,000 (five thousand pounds) in settlement for purchases made at any one auction.

7 Noonans may, at its absolute discretion, agree credit terms with the buyer before an auction under which the buyer will be entitled to take possession of lots purchased up to an agreed amount in value in advance of payment by a determined future date of the 'total amount due'.

8 Any payments by a buyer to Noonans may be applied by Noonans towards any sums owing from that buyer to Noonans on any account whatever, without regard to any directions of the buyer, his or her agent, whether expressed or implied.

9 Collection of purchases

The ownership of the lot(s) purchased shall not pass to the buyer until he or she has made payment in full to Noonans of the 'total amount due' in pounds sterling.

10 (a) The buyer shall at his or her own expense take away the lot(s) purchased not later than 5 working days after the day of the auction but (unless credit terms have been agreed in accordance with Condition 7) not before payment to Noonans of the 'total amount due'.

(b) The buyer shall be responsible for any removal, storage and insurance charges on any lot not taken away within 5 working days after the day of the auction.

(c) The packing and handling of purchased lots by Noonans staff is undertaken solely as a courtesy to clients and, in the case of fragile articles, will be undertaken only at Noonans' discretion. In no event will Noonans be liable for damage to glass or frames, regardless of the cause. Bulky lots or sharp implements, etc., may not be suitable for in-house shipping.

11 Buyers' responsibilities for lots purchased

The buyer will be responsible for loss or damage to lots purchased from the time of collection or the expiry of 5 working days after the day of the auction, whichever is the sooner. Neither Noonans nor its servants or agents shall thereafter be responsible for any loss or damage of any kind, whether caused by negligence or otherwise, while any lot is in its custody or under its control.

Loss and damage warranty cover at the rate of 1.5% will be applied to any lots despatched by Noonans to destinations outside the UK, unless specifically instructed otherwise by the consignee.

12 Remedies for non-payment or failure to collect purchase

If any lot is not paid for in full and taken away in accordance with Conditions 6 and 10, or if there is any other breach of either of those Conditions, Noonans as agent of the seller shall, at its absolute discretion and without prejudice to any other rights it may have, be entitled to exercise one or

more of the following rights and remedies:

- (a) to proceed against the buyer for damages for breach of contract.
- (b) to rescind the sale of that or any other lots sold to the defaulting buyer at the same or any other auction.
- (c) to re-sell the lot or cause it to be re-sold by public auction or private sale and the defaulting buyer shall pay to Noonans any resulting deficiency in the 'total amount due' (after deduction of any part payment and addition of re-sale costs) and any surplus shall belong to the seller.
- (d) to remove, store and insure the lot at the expense of the defaulting buyer and, in the case of storage, either at Noonans' premises or elsewhere.
- (e) to charge interest at a rate not exceeding 2 percent per month on the 'total amount due' to the extent it remains unpaid for more than 5 working days after the day of the auction.
- (f) to retain that or any other lot sold to the same buyer at the sale or any other auction and release it only after payment of the 'total amount due'.
- (g) to reject or ignore any bids made by or on behalf of the defaulting buyer at any future auctions or obtaining a deposit before accepting any bids in future.
- (h) to apply any proceeds of sale then due or at any time thereafter becoming due to the defaulting buyer towards settlement of the 'total amount due' and to exercise a lien on any property of the defaulting buyer which is in Noonans' possession for any purpose.

13 Liability of Noonans and sellers

(a) Goods auctioned are usually of some age. All goods are sold with all faults and imperfections and errors of description. Illustrations in catalogues are for identification only. Buyers should satisfy themselves prior to the sale as to the condition of each lot and should exercise and rely on their own judgement as to whether the lot accords with its description. Subject to the obligations accepted by Noonans under this Condition, none of the seller, Noonans, its servants or agents is responsible for errors of descriptions or for the genuineness or authenticity of any lot. No warranty whatever is given by Noonans, its servants or agents, or any seller to any buyer in respect of any lot and any express or implied conditions or warranties are hereby excluded.

(b) Any lot which proves to be a 'deliberate forgery' may be returned by the buyer to Noonans within 15 days of the date of the auction in the same condition in which it was at the time of the auction, accompanied by a statement of defects, the number of the lot, and the date of the auction at which it was purchased. If Noonans is satisfied that the item is a 'deliberate forgery' and that the buyer has and is able to transfer a good and marketable title to the lot free from any third party claims, the sale will be set aside and any amount paid in respect of the lot will be refunded, provided that the buyer shall have no rights under this Condition if:

- (i) the description in the catalogue at the date of the sale was in accordance with the then generally accepted opinion of scholars and experts or fairly indicated that there was a conflict of such opinion; or
- (ii) the only method of establishing at the date of publication of the catalogue that the lot was a

'deliberate forgery' was by means of scientific processes not generally accepted for use until after publication of the catalogue or a process which was unreasonably expensive or impractical.

(c) A buyer's claim under this Condition shall be limited to any amount paid in respect of the lot and shall not extend to any loss or damage suffered or expense incurred by him or her.

(d) The benefit of the Condition shall not be assignable and shall rest solely and exclusively in the buyer who, for the purpose of this condition, shall be and only be the person to whom the original invoice is made out by Noonans in respect of the lot sold.

## CONDITIONS MAINLY CONCERNING SELLERS AND CONSIGNORS

### 14 Warranty of title and availability

The seller warrants to Noonans and to the buyer that he or she is the true owner of the property or is properly authorised to sell the property by the true owner and is able to transfer good and marketable title to the property free from any third party claims. The seller will indemnify Noonans, its servants and agents and the buyer against any loss or damage suffered by either in consequence of any breach on the part of the seller.

### 15 Reserves

The seller shall be entitled to place, prior to the first day of the auction, a reserve at or below the low estimate on any lot provided that the low estimate is more than £100. Such reserve being the minimum 'hammer price' at which that lot may be treated as sold. A reserve once placed by the seller shall not be changed without the consent of Noonans. Noonans may at their option sell at a 'hammer price' below the reserve but in any such cases the sale proceeds to which the seller is entitled shall be the same as they would have been had the sale been at the reserve. Where a reserve has been placed, only the auctioneer may bid on behalf of the seller.

### 16 Authority to deduct commission and expenses

The seller authorises Noonans to deduct commission at the 'stated rate' and 'expenses' from the 'hammer price' and acknowledges Noonans' right to retain the premium payable by the buyer.

### 17 Rescission of sale

If before Noonans remit the 'sale proceeds' to the seller, the buyer makes a claim to rescind the sale that is appropriate and Noonans is of the opinion that the claim is justified, Noonans is authorised to rescind the sale and refund to the buyer any amount paid to Noonans in respect of the lot.

### 18 Payment of sale proceeds

Noonans shall remit the 'sale proceeds' to the seller 35 days after the auction, but if by that date Noonans has not received the 'total amount due' from the buyer then Noonans will remit the sale proceeds within five working days after the date on which the 'total amount due' is received from the buyer. If credit terms have been agreed between Noonans and the buyer, Noonans shall remit to the seller the sale proceeds 35 days after the auction unless otherwise agreed by the seller.

19 If the buyer fails to pay to Noonans the 'total amount due' within 35 days after the auction, Noonans will endeavour to notify the seller and take the seller's instructions as to the appropriate course of action and, so far as in Noonans' opinion is practicable, will assist the seller to recover the

'total amount due' from the buyer. If circumstances do not permit Noonans to take instructions from the seller, the seller authorises Noonans at the seller's expense to agree special terms for payment of the 'total amount due', to remove, store and insure the lot sold, to settle claims made by or against the buyer on such terms as Noonans shall in its absolute discretion think fit, to take such steps as are necessary to collect monies due by the buyer to the seller and if necessary to rescind the sale and refund money to the buyer if appropriate.

20 If, notwithstanding that, the buyer fails to pay to Noonans the 'total amount due' within 35 days after the auction and Noonans remits the 'sale proceeds' to the seller, the ownership of the lot shall pass to Noonans.

### 21 Charges for withdrawn lots

Where a seller cancels instructions for sale, Noonans reserve the right to charge a fee of 15% of Noonans' then latest middle estimate of the auction price of the property withdrawn, together with Value Added Tax thereon if the seller is resident in the UK, and 'expenses' incurred in relation to the property.

### 22 Rights to photographs and illustrations

The seller gives Noonans full and absolute right to photograph and illustrate any lot placed in its hands for sale and to use such photographs and illustrations and any photographs and illustrations provided by the seller at any time at its absolute discretion (whether or not in connection with the auction).

### 23 Unsold lots

Where any lot fails to sell, Noonans shall notify the seller accordingly. The seller shall make arrangements either to re-offer the lot for sale or to collect the lot.

24 Noonans reserve the right to charge commission up to one-half of the 'stated rates' calculated on the 'bought-in price' and in addition 'expenses' in respect of any unsold lots.

## GENERAL CONDITIONS AND DEFINITIONS

25 Noonans sells as agent for the seller (except where it is stated wholly or partly to own any lot as principal) and as such is not responsible for any default by seller or buyer.

26 Any representation or statement by Noonans, in any catalogue as to authorship, attribution, genuineness, origin, date, age, provenance, condition or estimated selling price is a statement of opinion only. Every person interested should exercise and rely on his or her own judgement as to such matters and neither Noonans nor its servants or agents are responsible for the correctness of such opinions.

27 Whilst the interests of prospective buyers are best served by attendance at the auction, Noonans will, if so instructed, execute bids on their behalf. Neither Noonans nor its servants or agents are responsible for any neglect or default in doing so or for failing to do so.

28 Noonans shall have the right, at its discretion, to refuse admission to its premises or attendance at its auctions by any person.

29 Noonans has absolute discretion without giving any reason to refuse any bid, to divide any lot, to combine any two or more lots, to withdraw any lot from the auction and in case of dispute to put

up any lot for auction again.

30 (a) Any indemnity under these Conditions shall extend to all actions, proceedings costs, expenses, claims and demands whatever incurred or suffered by the person entitled to the benefit of the indemnity.

(b) Noonans declares itself to be a trustee for its relevant servants and agents of the benefit of every indemnity under these Conditions to the extent that such indemnity is expressed to be for the benefit of its servants and agents.

31 Any notice by Noonans to a seller, consignor, prospective bidder or buyer may be given by first class mail, airmail or email and if so given shall be deemed to have been duly received by the addressee within 48 hours.

32 These Conditions shall be governed by and construed in accordance with English law. All transactions to which these Conditions apply and all matters connected therewith shall also be governed by English law. Noonans hereby submits to the exclusive jurisdiction of the English courts and all other parties concerned hereby submit to the non-exclusive jurisdiction of the English courts.

### 33 In these Conditions:

(a) 'catalogue' includes any advertisement, brochure, estimate, price list or other publication;

(b) 'hammer price' means the price at which a lot is knocked down by the auctioneer to the buyer;

(c) 'total amount due' means the 'hammer price' in respect of the lot sold together with any premium, Value Added Tax chargeable and additional charges and expenses due from a defaulting buyer in pounds sterling;

(d) 'deliberate forgery' means an imitation made with the intention of deceiving as to authorship, origin, date, age, period, culture or source which is not shown to be such in the description in the catalogue and which at the date of the sale had a value materially less than it would have had if it had been in accordance with that description;

(e) 'sale proceeds' means the net amount due to the seller being the 'hammer price' of the lot sold less commission at the 'stated rates' and 'expenses' and any other amounts due to Noonans by the seller in whatever capacity and howsoever arising;

(f) 'stated rate' means Noonans' published rates of commission for the time and any Value Added Tax thereon;

(g) 'expenses' in relation to the sale of any lot means Noonans charges and expenses for insurance, illustrations, special advertising, certification, remedials, packing and freight of that lot and any Value Added Tax thereon;

(h) 'bought-in price' means 5 per cent more than the highest bid received below the reserve.

### 34 Vendors' commission of sales

A commission of 15% is payable by the vendor on the hammer price on lots sold.

Insurance is charged at 1.5% of the hammer price.

### 35 VAT

Commission, illustrations, insurance and expenses are subject to VAT if the seller is resident in the UK.



AT NOONANS OUR EXPERTISE EXTENDS BEYOND THE KNOWLEDGE WITHIN OUR SPECIALIST DEPARTMENTS TO INCLUDE ALL ASPECTS OF OUR AUCTION HOUSE, FROM OUR PHOTOGRAPHY STUDIO TO OUR ADVANCED PROPRIETARY ONLINE BIDDING SYSTEM.

We're a close-knit team of experts with deep knowledge across our specialist subjects: banknotes, coins, detectorist finds, historical & art medals, jewellery, medals & militaria, objects of vertu, silver, tokens and watches. Focusing on these fascinating items, we share this expertise with an international community of sellers and buyers.

Each sale item that passes through our Mayfair auction house is appraised by an expert recognised as a leading authority in a particular field of interest, ranging from ancient coins and military medals to jewellery and vintage watches. This depth of knowledge across all departments sets us apart from other generalist auctioneers.

#### SELL WITH US

Respected worldwide for the breadth and depth of our specialist expertise, we can connect you to a broad, deep pool of potential buyers. Over the years, we've brought together an international community of people who share our particular passion. As recognised experts, with a vast store of freely available in-house knowledge and experience, we've earned the trust of buyers across the globe.

Our fees are transparent. Unlike many other auction houses, we don't charge for collecting your lots, photography or marketing and there's no minimum lot charge.

Not surprisingly, our position as a trusted authority, with deep global reach, often leads to the achievement of higher than expected prices at auction.

#### Free valuation

If you're interested in selling your items and you'd like a free auction valuation, without obligation, our specialists will be happy to help. You can submit online or bring your sale item to a valuation day at our Mayfair auction house or at a regional venue. Alternatively, request a home visit.

#### BUY WITH US

We're here for you, whether you're an experienced collector with a depth of knowledge or an occasional buyer attracted to a particular piece of jewellery or vintage watch.

Be assured that the item in question has been accurately described and photographed, detailing all available information, from its provenance to its current condition. Be certain that our price estimate is fair and sensible.

Delve deep into our website and you'll discover a vast store of helpful background data, including prices achieved for similar items at previous auctions. Informed and empowered, study our detailed online catalogue, then place your bid in complete confidence.

NOONANS  
16 BOLTON STREET  
MAYFAIR  
LONDON W1J 8BQ  
T. 020 7016 1700  
[WWW.NOONANS.CO.UK](http://WWW.NOONANS.CO.UK)

NOONANS  
MAYFAIR



[WWW.NOONANS.CO.UK](http://WWW.NOONANS.CO.UK)